

# Microsoft

## Exam Questions PL-500

Microsoft Power Automate RPA Developer



#### NEW QUESTION 1

- (Exam Topic 1)

You need to ensure that the solution uses the correct accounts payable mailbox. Which three actions should you perform? Each correct answer part of the solution, NOTE: Each correct selection is worth one point.

- A. Set the current value for the accounts payable mailbox in the environment.
- B. Set the default value for the accounts payable mailbox in the environment.
- C. Turn off and then turn on the cloud flows.
- D. Use separate environment variables for the cloud flow and the canvas app.
- E. Use one environment variable for both the cloud flows and the canvas app.

**Answer:** ACD

#### NEW QUESTION 2

- (Exam Topic 1)

You need to identify the cause for the SMSApp data entry issue. What is the root cause?

- A. The DLP policy that contains the desktop flow connector was deleted.
- B. The default policy group is set to Blocked.
- C. The desktop flow was not shared with the finance clerk.
- D. The scope of the DLP policy was changed to exclude the development environment
- E. The Power Automate Management connector is assigned to the Business category.

**Answer:** C

#### NEW QUESTION 3

- (Exam Topic 2)

You need to configure the desktop action for the MaintenanceScheduler cloud flow. Which two actions should you perform? Each correct answer presents part of the solution. NOTE: Each correct selection is worth one point.

- A. Select machine settings in Power Automate for desktop.
- B. Select the Timeout property and update the duration to PT20M.
- C. Select the Timeout property and update the duration to P20M.
- D. Launch Power Automate for desktop.
- E. Navigate to Desktop flow action settings in the cloud flow.

**Answer:** AD

#### NEW QUESTION 4

- (Exam Topic 2)

You need to identify the actions that PipelineManager1 can perform.

Which three actions can PipelineManager1 perform? Each correct answer presents a complete solution. NOTE: Each correct selection is worth one point.

- A. Override the DLP policy.
- B. Modify or delete a flow.
- C. Modify the owner's connection credentials.
- D. View the run history.
- E. Set the cloud flow priority.
- F. Add or remove other owners.

**Answer:** CDF

#### NEW QUESTION 5

- (Exam Topic 2)

You need to package the automations. What should you do?

- A. Show dependencies within the solution.
- B. Remove unmanaged layers.
- C. Add required components to each item within the solution.
- D. Add existing components to the solution.

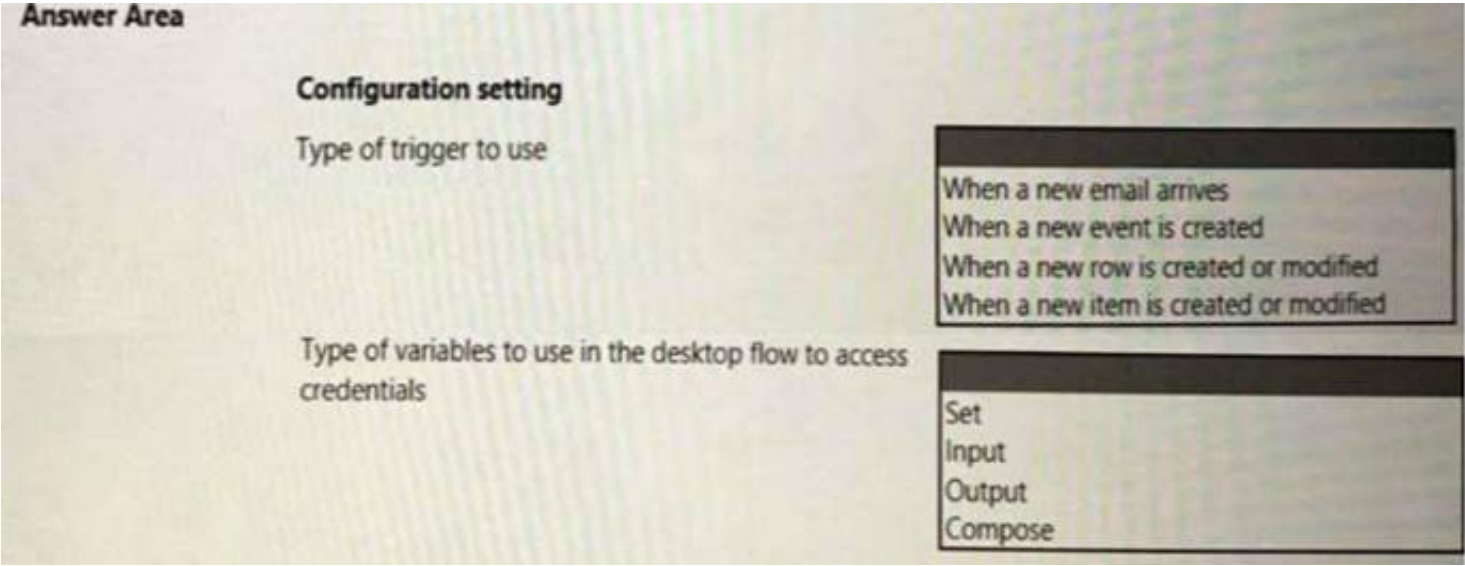
**Answer:** B

#### NEW QUESTION 6

- (Exam Topic 2)

You need to configure the solution for the ERPDataOperations flow.

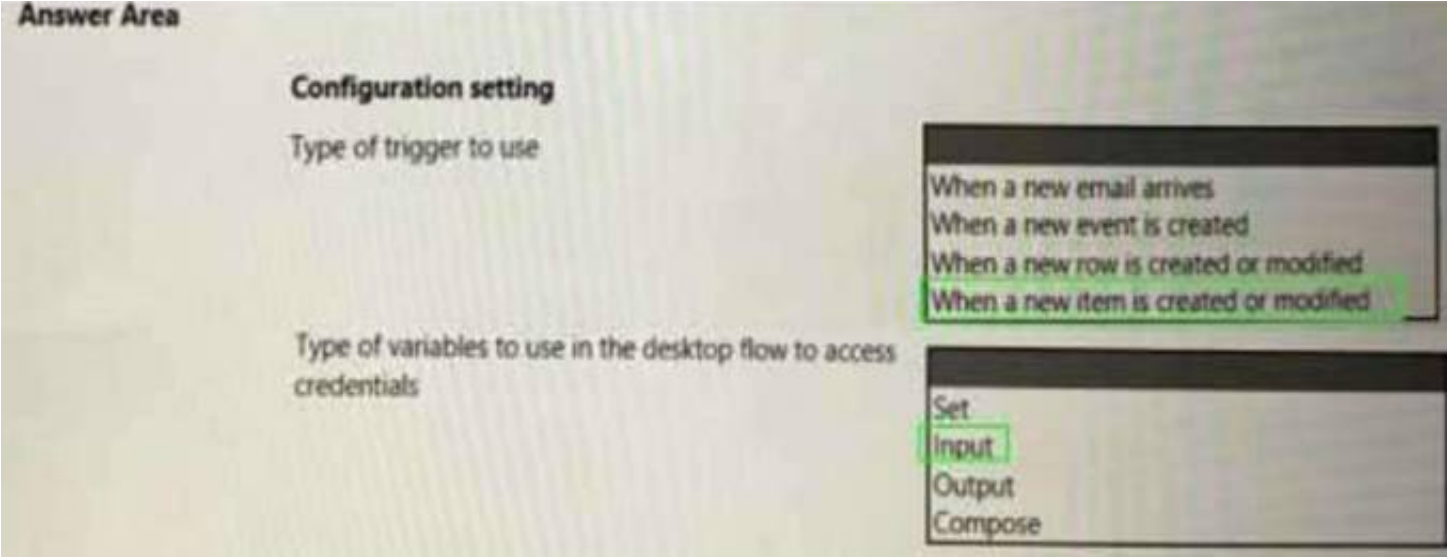
Which configuration values should you use? To answer, select the appropriate options in the answer area, NOTE: Each correct selection is worth one point.



- A. Mastered
- B. Not Mastered

Answer: A

Explanation:



NEW QUESTION 7

- (Exam Topic 2)

You need to resolve the issue reported with the RailStatusUpdater flow.  
What are two possible ways to achieve the goal? Each correct answer presents a complete solution.  
NOTE:Each correct selection is worth one point.

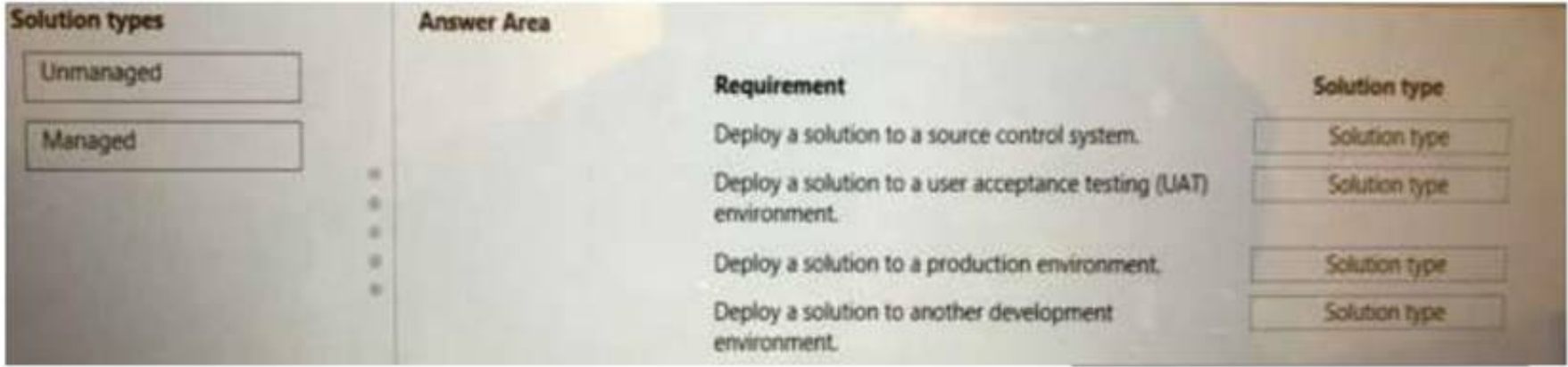
- A. Put the desktop flow action into a Do until loop
- B. Run until the desktop flow is successful.
- C. Call a separate child cloud flow to perform the desktop flow a second time.
- D. Create a duplicate action for the desktop flow and configure the duplicate action to run if the first desktop flow action fails.
- E. Create a duplicate action for the desktop flow to run after the first desktop flow.

Answer: A

NEW QUESTION 8

- (Exam Topic 3)

You develop automation solutions for a company. The company does not permit changes to a deployed solution in user acceptance testing (UAT) a environments.  
You need to package the solutions.  
Which type of solutions should you create? To answer, drag the appropriate solution types to the correct requirements. Each solution type may be used once, more the once, or not at all. You may need to drag the split bar between panes or scroll to view content.  
NOTE: Each correct selection is worth one point.



- A. Mastered
- B. Not Mastered

Answer: A

Explanation:

Solution types	Requirement	Solution type
Unmanaged	Deploy a solution to a source control system.	Unmanaged
Managed	Deploy a solution to a user acceptance testing (UAT) environment.	Unmanaged
	Deploy a solution to a production environment.	Managed
	Deploy a solution to another development environment.	Unmanaged

NEW QUESTION 9

- (Exam Topic 3)

You are developing automation solutions for a company.

You need to use an environment variable in a cloud flow.

Which three actions should you perform in sequence? To answer, move the appropriate actions from the list of actions to the answer area and arrange them in the correct order.

Actions	Answer Area
Add an environment variable to a solution.	
Create a cloud flow in a solution.	
Navigate to <a href="https://flow.microsoft.com">https://flow.microsoft.com</a> .	
Navigate to <a href="https://admin.powerplatform.com">https://admin.powerplatform.com</a> .	
Select the desired environment variable.	

- A. Mastered
- B. Not Mastered

Answer: A

Explanation:

Actions	Answer Area
Add an environment variable to a solution.	
Create a cloud flow in a solution.	
Navigate to <a href="https://flow.microsoft.com">https://flow.microsoft.com</a> .	
Navigate to <a href="https://admin.powerplatform.com">https://admin.powerplatform.com</a> .	
Select the desired environment variable.	

NEW QUESTION 10

- (Exam Topic 3)

You are preparing to share a desktop flow. You need to share the flow with another user. Which two methods can you use? Each correct answer presents a complete solution.

NOTE: Each correct selection is worth one point.

- A. Share the desktop flow by using the Microsoft Power Platform admin center.
- B. Share the desktop flow by using the Power Automate porta
- C. Grant the user permissions to access the flow.
- D. Export a solution that contains the desktop flow and provide the solution to the user.
- E. Create a managed solution that contains the desktop flow and share the solution with another user.

Answer: CD

NEW QUESTION 10

- (Exam Topic 3)

You create a process map by using Process advisor. You plan to create a cloud flow based on the process map. You need to develop the cloud flow.

Which two Process advisor features can you use? Each correct answer presents a complete solution. NOTE: Each correct selection is worth one point.

- A. Automatically build a cloud flow based on the process map.



- B. Recommend automation opportunities based on the process map,
- C. Suggest input variables to use in the cloud flow.
- D. Suggest connectors to use in the cloud flow.

Answer: AB

NEW QUESTION 11

- (Exam Topic 3)

You are developing a custom connector.

You need to create the definition for the connector.

Which features should you use? To answer, select the appropriate options in the answer area. NOTE: Each correct selection is worth one point.

Answer Area

Scenario	Feature
Define operations that users can perform.	<div>Code</div> <div>Action</div> <div>Policy</div> <div>Trigger</div>
Define actions that will be invoked by events.	<div>Code</div> <div>Action</div> <div>Policy</div> <div>Trigger</div>
Change the host URL for specific actions.	<div>Code</div> <div>Action</div> <div>Policy</div> <div>Trigger</div>
Extract data from responses by using regex expressions.	<div>Code</div> <div>Action</div> <div>Policy</div> <div>Trigger</div>

- A. Mastered
- B. Not Mastered

Answer: A

Explanation:

Answer Area

Scenario	Feature
Define operations that users can perform.	<div>Code</div> <div>Action</div> <div>Policy</div> <div>Trigger</div>
Define actions that will be invoked by events.	<div>Code</div> <div>Action</div> <div>Policy</div> <div>Trigger</div>
Change the host URL for specific actions.	<div>Code</div> <div>Action</div> <div>Policy</div> <div>Trigger</div>
Extract data from responses by using regex expressions.	<div>Code</div> <div>Action</div> <div>Policy</div> <div>Trigger</div>

NEW QUESTION 15

- (Exam Topic 3)

You are developing automation solutions for a company.

You need to use Microsoft Office scripts in a cloud flow to calculate the number of business days between two dates.

Which three actions should you perform in sequence?

To order, answer, move the appropriate actions from the list of actions to the answer area and arrange them in the correct order.

Actions

In the Excel desktop app, navigate to the Automate tab.

Create and save a script.

Add and configure a Run script action.

Add a Compose action and use an expression.

In Microsoft Excel on the web, navigate to the Automate tab.

>

<

Answer area

>

<

- A. Mastered
- B. Not Mastered

Answer: A

Explanation:

Actions

In the Excel desktop app, navigate to the Automate tab.

Create and save a script.

Add and configure a Run script action.

Add a Compose action and use an expression.

In Microsoft Excel on the web, navigate to the Automate tab.

>

<

Answer area

Add and configure a Run script action.

Create and save a script.

In the Excel desktop app, navigate to the Automate tab.

>

<

NEW QUESTION 18

- (Exam Topic 3)

You create the following flow:

{x}

Initialize variable

\* Name

success

\* Type

Boolean

Value

false

x

↓

Do until

success

x

is equal to

true

x

Edit in advanced mode

Change limits

^

Count

3

Timeout

PT15M

For each of the following statements, select Yes if the statement is true. Otherwise, select No. NOTE: Each correct selection is worth one point.

Passing Certification Exams Made Easy

visit - <https://www.surepassexam.com>



Questions	Response
What does the value 3 in the Count property represent?	<div>The do until action will retry up to three times if there are any failures. The do until actions must succeed three times before moving on to the next action.</div>
What does the value PT15M in the Timeout property represent?	<div>The do until must run for a minimum of 15 minutes. The flow cannot exceed 15 minutes of total run time. The do until will time out when it reaches 15 minutes.</div>

- A. Mastered
- B. Not Mastered

**Answer:** A

**Explanation:**

Questions	Response
What does the value 3 in the Count property represent?	<div>The do until action will retry up to three times if there are any failures. The do until actions must succeed three times before moving on to the next action.</div>
What does the value PT15M in the Timeout property represent?	<div>The do until must run for a minimum of 15 minutes. The flow cannot exceed 15 minutes of total run time. The do until will time out when it reaches 15 minutes.</div>

#### NEW QUESTION 21

- (Exam Topic 3)

You develop a desktop flow. You need to debug the flow.

Which three tools can you use? Each correct answer presents a complete solution. NOTE: Each correct selection is worth one point.

- A. Static results
- B. Run from here
- C. Breakpoints
- D. Configure run after
- E. Run next action

**Answer:** BCE

#### NEW QUESTION 24

- (Exam Topic 3)

You have a flow that interacts with different SharePoint sites. You add the flow to a solution.

You redeploy the solution to production each time you make a change to the flow. You do not want to change the SharePoint site URL every time you redeploy the solution.

You need to configure the solution. Which solution component should you use?

- A. Environment variable
- B. Web resource
- C. Managed identity
- D. Connection reference

**Answer:** D

#### NEW QUESTION 26

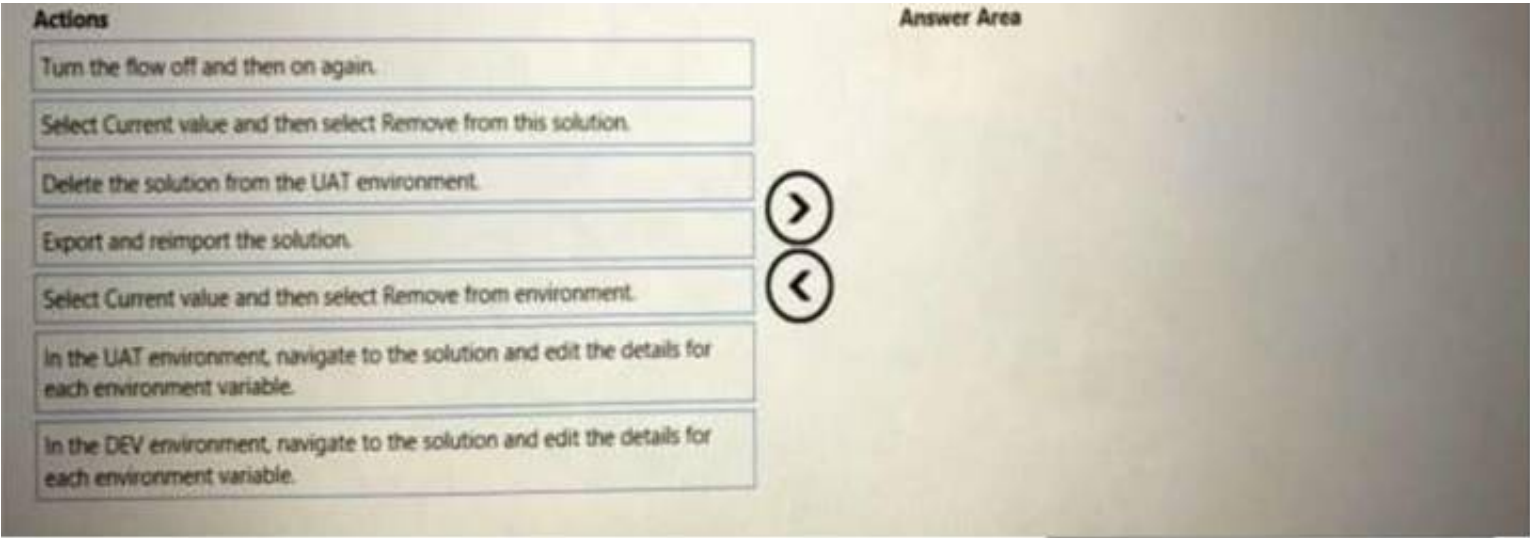
- (Exam Topic 3)

You create a Microsoft Power Platform solution. You create variables to define input values for the flow. You export the solution as managed and import the solution into a user acceptance testing (UAT) environment.

The flow in the UAT environment is still using the values from the development (DEV) environment.

You need to resolve the issue.

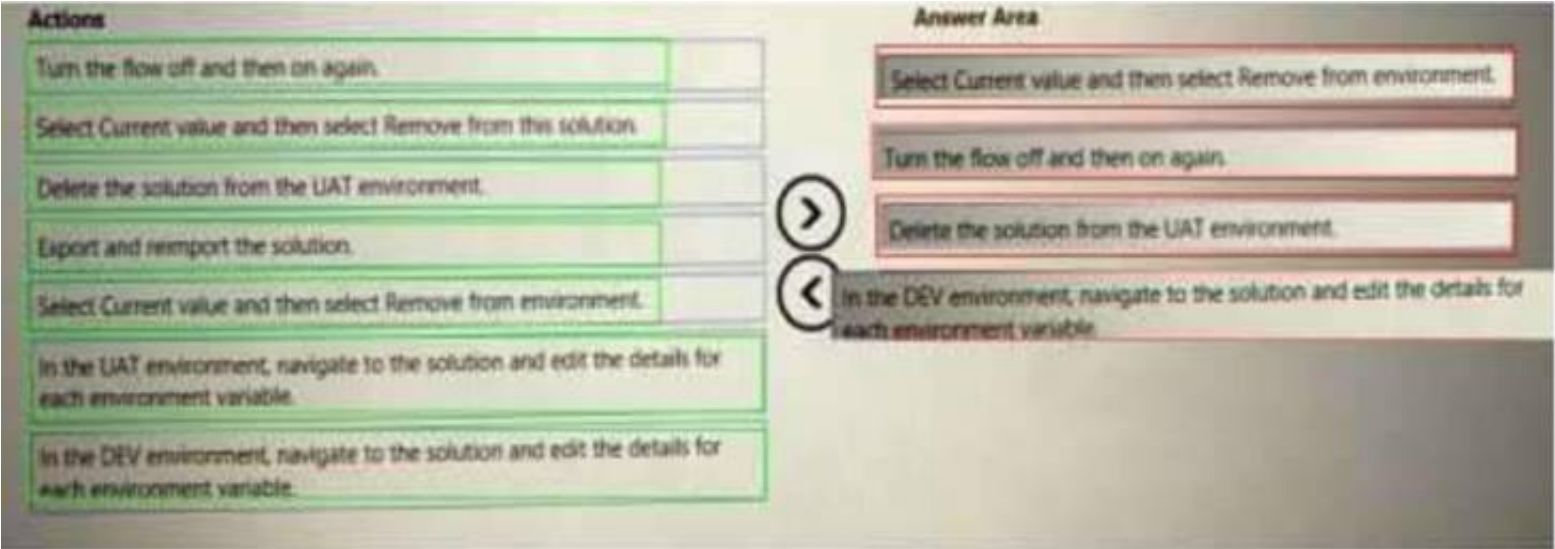
Which four actions should you perform in sequence? To answer, move the appropriate actions from the list of actions to the answer area and arrange them in the correct order.



- A. Mastered
- B. Not Mastered

Answer: A

Explanation:



NEW QUESTION 31

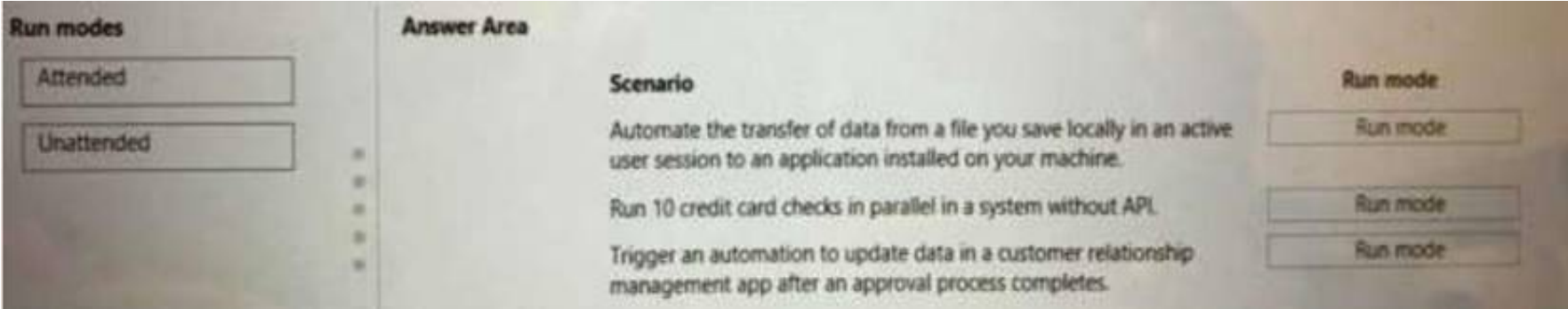
- (Exam Topic 3)

You are designing automation processes.

You need to configure the run mode for each automation scenario.

Which run modes should you use? To answer, drag the appropriate run modes to the correct scenarios. Each run mode may be used once, more than once, or not at all. You may need to drag the split bar between panes or scroll to view content.

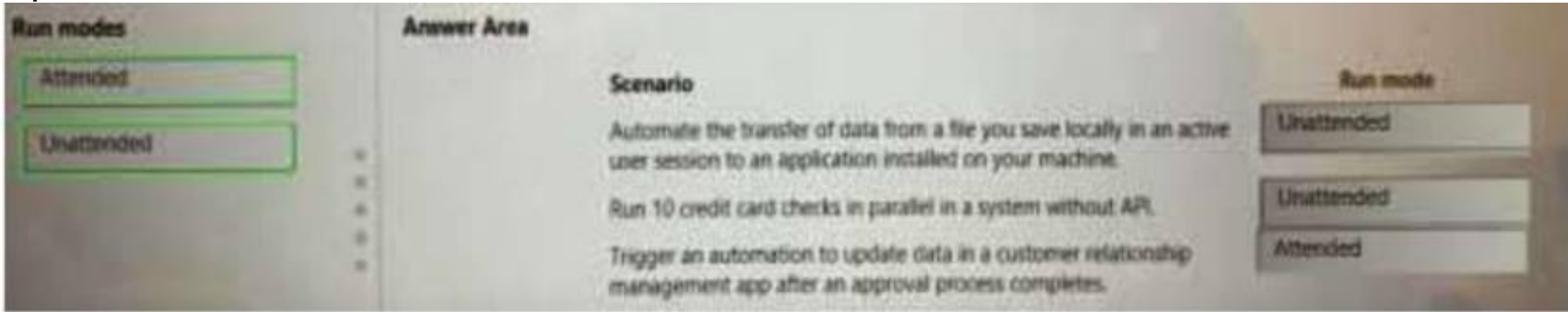
NOTE: Each correct selection is worth one point.



- A. Mastered
- B. Not Mastered

Answer: A

Explanation:



NEW QUESTION 36

- (Exam Topic 3)

You develop a desktop flow. The flow performs five actions in sequence.



If an error occurs, you must restart the flow from the first action. You add the five actions to an On block error action. You need to configure error handling. Which two actions should you perform? Each correct answer presents part of the solution. NOTE: Each correct selection is worth one point.

- A. Change the exception handling mode to Go to the beginning of the block.
- B. Select Continue flow run.
- C. Select Throw error.
- D. Change the exception handling mode to Go to next action.
- E. Configure an On error condition for the first action.

Answer: ACE

**NEW QUESTION 37**

- (Exam Topic 3)  
You create several desktop flows. Each flow will run on a single user's device. You need to determine how Power Automate will orchestrate the flows. Which three rules will Power Automate apply? Each correct answer presents a complete solution. NOTE: Each correct selection is worth one point.

- A. All the flows are run simultaneously.
- B. The next flow will run when each run completes based on the priority and the time requested.
- C. The first flow runs on the target device based on the priority and the time requested.
- D. The first flow runs on the target device based on Next to run status and time requested.
- E. The first and last flows run based on the priority and the time requested.
- F. The remaining flows are queued.

Answer: AEF

**NEW QUESTION 39**

- (Exam Topic 3)  
You manage automation solutions for a company. You need to select the appropriate patch type for each scenario. Which patch types should you use? To answer, drag the appropriate patch types to the correct requirements. Each patch type may be used once, more than once, or not at all. You may need to drag the bar between panes or scroll to view content. NOTE: Each correct selection is worth one point.

Patch types		Requirement	Patch type
Upgrade		Upgrade a solution to the latest version. Delete any components from the previous version that do not exist in the new version.	Patch type
Stage for upgrade		Upgrade a solution to the latest version. Retain all components from the previous version.	Patch type
Update		Replace a solution with the latest version. Retain all components from the previous version.	Patch type

- A. Mastered
- B. Not Mastered

Answer: A

Explanation:

Patch types		Requirement	Patch type
Upgrade		Upgrade a solution to the latest version. Delete any components from the previous version that do not exist in the new version.	Upgrade
Stage for upgrade		Upgrade a solution to the latest version. Retain all components from the previous version.	Update
Update		Replace a solution with the latest version. Retain all components from the previous version.	Stage for upgrade

**NEW QUESTION 40**

- (Exam Topic 3)  
You plan to use a cloud flow. The flow must be contained within a solution. You need to add the cloud flow to a solution. Solution: Create an instant cloud flow outside of a solution. Add the cloud flow into a new unmanaged solution. Does the solution meet the goal?

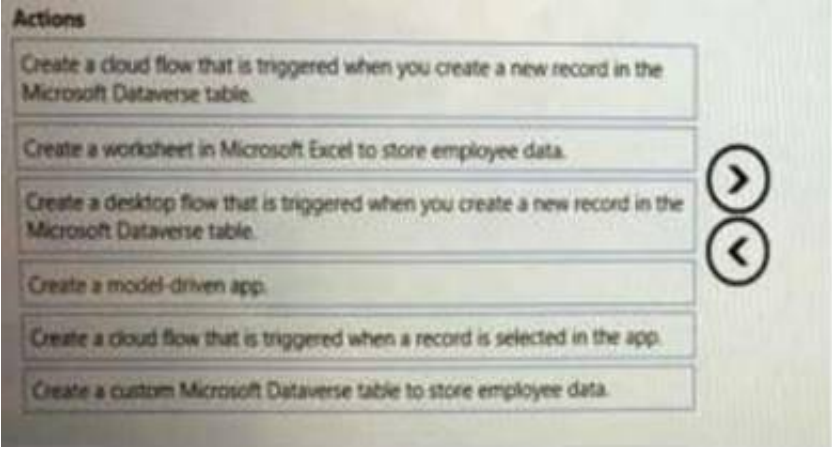
- A. Yes
- B. No

Answer: A

**NEW QUESTION 41**

- (Exam Topic 3)

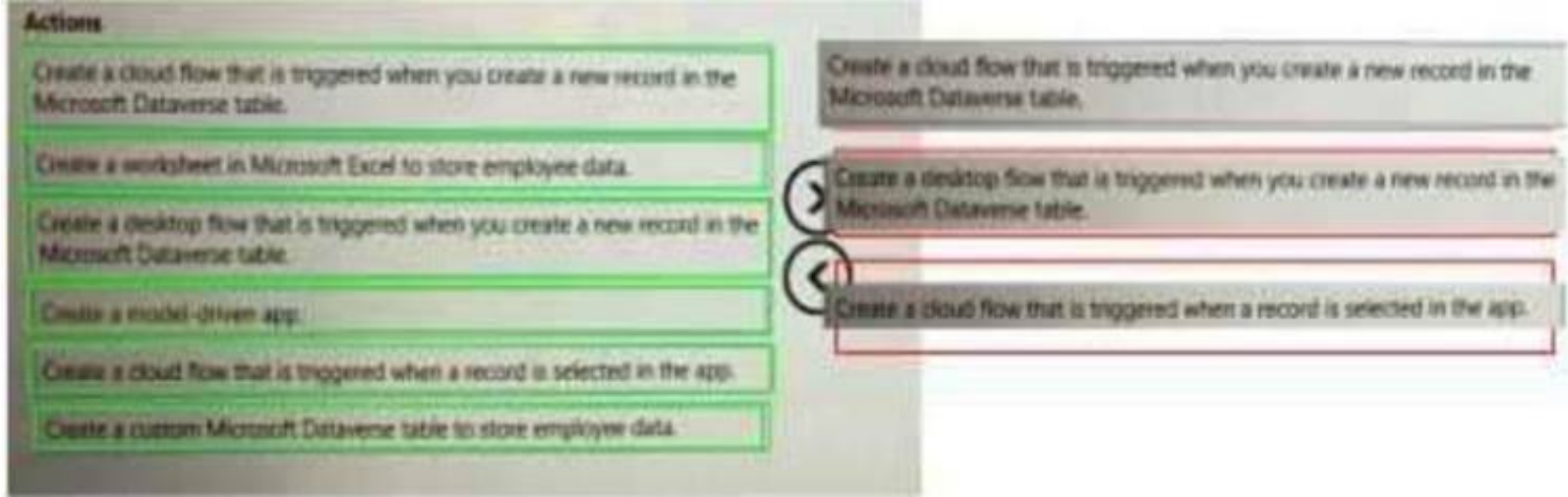
A company hires you to develop a solution that helps the company manage new hires. Users will enter information about the new employee into an app and the app will save the information to a database.  
The app must be simple to use and must rely on a data model. You must implement a workflow that automatically notifies the IT department when new employee records are created in the database.  
You need to create the solution.  
Which three actions should you perform in sequence? To answer, move the appropriate actions from the list of actions to the answer area and arrange them in the correct order.



- A. Mastered
- B. Not Mastered

Answer: A

Explanation:



**NEW QUESTION 42**

- (Exam Topic 3)  
You are developing automation solutions for a company.  
You need to select the components to use for each scenario. You must minimize development efforts. Which methods should you use? To answer, select the appropriate options in the answer area.  
NOTE: Each correct selection is worth one point.

Answer Area	
Scenario	Component
Query items from a SharePoint list.	<div><div>Built-in connector</div><div>Custom connector</div><div>HTTP connector</div><div>Azure API Management</div></div>
Share methods from a third-party REST API with an organization.	<div><div>Built-in connector</div><div>Custom connector</div><div>HTTP connector</div><div>Browser automation</div></div>
Call a Microsoft Graph API endpoint using application permissions.	<div><div>Built-in connector</div><div>Custom connector</div><div>HTTP connector</div><div>Azure API Management</div></div>

- A. Mastered
- B. Not Mastered

Answer: A

Explanation:



**Answer Area**

Scenario	Component
Query items from a SharePoint list.	<input type="checkbox"/> Built-in connector <input type="checkbox"/> Custom connector <input checked="" type="checkbox"/> HTTP connector <input type="checkbox"/> Azure API Management
Share methods from a third-party REST API with an organization.	<input type="checkbox"/> Built-in connector <input checked="" type="checkbox"/> Custom connector <input type="checkbox"/> HTTP connector <input type="checkbox"/> Browser automation
Call a Microsoft Graph API endpoint using application permissions.	<input type="checkbox"/> Built-in connector <input type="checkbox"/> Custom connector <input checked="" type="checkbox"/> HTTP connector <input checked="" type="checkbox"/> Azure API Management

**NEW QUESTION 46**

- (Exam Topic 3)

A company has a business-critical desktop flow that runs on a single machine. The number of daily runs for the flow has significantly increased recently. Users report that the time required for the flow to complete is no longer acceptable. You need to scale the solution. Which four actions should you perform in sequence? To answer, move the appropriate actions from the list of actions to the answer area and arrange them in the correct order.

**Actions**

- Update the cloud flow connection.
- Sign into a machine and launch the Power Automate portal. Add the current machine to an existing group.
- Sign into every other machine and add the machines to the group.
- Launch the Power Automate machine runtime on one machine and add the machine to a group.
- Provision new machines and install Power Automate for desktop on each machine.
- Launch Power Automate for desktop on one machine and add the machine to a group.
- Create a new group in the Power Automate portal and add all machines to the group.

**Answer area**

Navigation: > <

- A. Mastered
- B. Not Mastered

Answer: A

Explanation:

**Actions**

- Update the cloud flow connection.
- Sign into a machine and launch the Power Automate portal. Add the current machine to an existing group.
- Sign into every other machine and add the machines to the group.
- Launch the Power Automate machine runtime on one machine and add the machine to a group.
- Provision new machines and install Power Automate for desktop on each machine.
- Launch Power Automate for desktop on one machine and add the machine to a group.
- Create a new group in the Power Automate portal and add all machines to the group.

**Answer area**

Sequence of actions in Answer area:

- Sign into every other machine and add the machines to the group.
- Launch the Power Automate machine runtime on one machine and add the machine to a group.
- Update the cloud flow connection.
- Create a new group in the Power Automate portal and add all machines to the group.

**NEW QUESTION 48**

- (Exam Topic 3)



You are developing an RPA solution that requires browser automation. You are testing the flow. You observe that the flow does not interact with web page elements in Microsoft Edge. You need to troubleshoot the issue. What should you do?

- A. Enable error handling on the action to retry on failure.
- B. Ensure the UI flows/Selenium extension is downloaded and enabled in Microsoft Edge.
- C. Open Power Automate machine runtime and select Troubleshoot
- D. Ensure the Power Automate for desktop browser extension is downloaded and enabled in Microsoft Edge.

Answer: A

**NEW QUESTION 49**

- (Exam Topic 3)

A company plans to implement AI models to perform business processes. You need to determine whether to use prebuilt or custom AI models. Which type of model should you use for each scenario? To answer, drag the appropriate model types to the correct scenarios. Each model may be used once, more than once, or not at all. You may need to drag the split bar between panes or scroll to view content.  
NOTE: Each correct selection is worth one point.

Model types

Prebuilt

Custom

Scenario

Extract information from a receipt.

Detect spam emails.

Identify the language used in a text document.

Extract information from tax documents.

Model type

Model type

Model type

Model type

- A. Mastered
- B. Not Mastered

Answer: A

Explanation:

Model types

Prebuilt

Custom

Scenario

Extract information from a receipt.

Detect spam emails.

Identify the language used in a text document.

Extract information from tax documents.

Model type

Custom

Custom

Prebuilt

Custom

**NEW QUESTION 54**

- (Exam Topic 3)

You are designing automation solutions that interact with a desktop application. You need to select the appropriate UI automation action for each business requirement. Which automation action should you use? To answer, select the appropriate options in the answer area. NOTE: Each correct selection is worth one point.

Requirement

Retrieve the state from a checkbox in the desktop application.

Bring the desktop application to the foreground.

Suspend a process until a specific window opens.

UI automation action

Get selected checkboxes in window

Get details of a UI element in window

Get selected radio button in window

Extract data from window

Focus window

Get details of window

Get details of a UI element in window

Set window state

Wait for window

Wait for window content

Set window state

Terminate process

- A. Mastered
- B. Not Mastered

Answer: A

Explanation:

**Answer Area**

Requirement	UI automation action
Retrieve the state from a checkbox in the desktop application.	<div>Get selected checkboxes in window</div> <div>Get details of a UI element in window</div> <div>Get selected radio button in window</div> <div>Extract data from window</div>
Bring the desktop application to the foreground.	<div>Focus window</div> <div>Get details of window</div> <div>Get details of a UI element in window</div> <div>Set window state</div>
Suspend a process until a specific window opens.	<div>Wait for window</div> <div>Wait for window content</div> <div>Set window state</div> <div>Terminate process</div>

NEW QUESTION 59

- (Exam Topic 3)

You are developing automation solutions for a company.

You need to select the applicable flow type to automate the following tools and technologies:

- Microsoft Excel
- Desktop application
- File system

Which flow types should you use? To answer, drag the appropriate flow types to the correct automation targets. Each flow type may be used once, more than once, or not at all. You may need to drag the split bar between panes or scroll to view content.

NOTE: Each correct selection is worth one point.

**Flow types**

Cloud flows only

Desktop flows only

Cloud flows or desktop flows

**Automation target**

Microsoft Excel

Desktop application

File system

**Flow type**

Flow type

Flow type

Flow type

A. Mastered

B. Not Mastered

Answer: A

Explanation:

**Flow types**

Cloud flows only

Desktop flows only

Cloud flows or desktop flows

**Automation target**

Microsoft Excel

Desktop application

File system

**Flow type**

Cloud flows only

Cloud flows or desktop flows

Desktop flows only

NEW QUESTION 63

- (Exam Topic 3)

You plan to create a Microsoft Visio process diagram.

You need to create the diagram and then export the diagram as a Power Automate flow.

Which five actions should you perform in sequence? To answer, move the appropriate actions from the list of actions to the answer area and arrange them in the correct order.

Passing Certification Exams Made Easy

visit - <https://www.surepassexam.com>



Actions

Create the diagram by using BPMN shapes.

Create the diagram by using standard flowchart shapes.

Name the flow and select **Create Flow**.

Map shapes to flow actions.

Select **Prepare to Export** in the toolbar.

Select **Export to Flow**.

Answer Area

>

<

- A. Mastered
- B. Not Mastered

Answer: A

Explanation:

Actions

Create the diagram by using BPMN shapes.

Create the diagram by using standard flowchart shapes.

Name the flow and select **Create Flow**.

Map shapes to flow actions.

Select **Prepare to Export** in the toolbar.

Select **Export to Flow**.

Answer Area

Select **Prepare to Export** in the toolbar.

Create the diagram by using standard flowchart shapes.

Name the flow and select **Create Flow**.

Create the diagram by using BPMN shapes.

Map shapes to flow actions.

NEW QUESTION 64

- (Exam Topic 3)

You develop automation solutions for a company.

You need to configure variables for a cloud flow solution.

Which types of variables should you use for each type of data? To answer, select the appropriate options in the answer area.

NOTE: Each correct selection is worth one point.

Answer Area

Requirement	Variable type
Store a list of names in JSON format.	<div><div>Object</div><div>Float</div><div>Integer</div><div>Array</div></div>
Store the URL for a website.	<div><div>Object</div><div>String</div><div>Float</div><div>Integer</div><div>Array</div></div>
Store a date using the following pattern: yyyy-MM-dd.	<div><div>Object</div><div>String</div><div>Float</div><div>Integer</div><div>Array</div></div>
Store a price for a product.	<div><div>Object</div><div>String</div><div>Float</div><div>Integer</div><div>Array</div></div>

- A. Mastered
- B. Not Mastered

Answer: A

Explanation:



Answer Area

Requirement	Variable type
Store a list of names in JSON format.	<div>Object</div> <div>Float</div> <div>Integer</div> <div>Array</div>
Store the URL for a website.	<div>Object</div> <div>String</div> <div>Float</div> <div>Integer</div> <div>Array</div>
Store a date using the following pattern: yyyy-MM-dd.	<div>Object</div> <div>String</div> <div>Float</div> <div>Integer</div> <div>Array</div>
Store a price for a product.	<div>Object</div> <div>String</div> <div>Float</div> <div>Integer</div> <div>Array</div>

NEW QUESTION 65

- (Exam Topic 3)  
A client would like you to create a custom connector. You need to configure the connector. Which element is required?

- A. API Key
- B. On-premises data gateway
- C. Power Automate per user license
- D. JSON sample for request
- E. Power Automate per flow license

Answer: C

NEW QUESTION 68

.....

## Thank You for Trying Our Product

### We offer two products:

1st - We have Practice Tests Software with Actual Exam Questions

2nd - Questions and Answers in PDF Format

### PL-500 Practice Exam Features:

- \* PL-500 Questions and Answers Updated Frequently
- \* PL-500 Practice Questions Verified by Expert Senior Certified Staff
- \* PL-500 Most Realistic Questions that Guarantee you a Pass on Your First Try
- \* PL-500 Practice Test Questions in Multiple Choice Formats and Updates for 1 Year

**100% Actual & Verified — Instant Download, Please Click**  
**[Order The PL-500 Practice Test Here](#)**