



HP

Exam Questions HPE3-U01

Aruba Certified Network Technician Exam(ACNT)

About ExamBible

[Your Partner of IT Exam](#)

Found in 1998

ExamBible is a company specialized on providing high quality IT exam practice study materials, especially Cisco CCNA, CCDA, CCNP, CCIE, Checkpoint CCSE, CompTIA A+, Network+ certification practice exams and so on. We guarantee that the candidates will not only pass any IT exam at the first attempt but also get profound understanding about the certificates they have got. There are so many alike companies in this industry, however, ExamBible has its unique advantages that other companies could not achieve.

Our Advances

* 99.9% Uptime

All examinations will be up to date.

* 24/7 Quality Support

We will provide service round the clock.

* 100% Pass Rate

Our guarantee that you will pass the exam.

* Unique Gurantee

If you do not pass the exam at the first time, we will not only arrange FULL REFUND for you, but also provide you another exam of your claim, ABSOLUTELY FREE!

NEW QUESTION 1

You connect a computer to the network. Assuming you have configured a static address to its NIC, what protocols will the computer run in order to establish a secure web connection to YouTube.com?

- A. DNS and HTTPS
- B. DHCP, FTP, and HTTP5
- C. DHCP, DNS, and HTTPS
- D. DHCP and https
- E. FTP and https

Answer: C

NEW QUESTION 2

Which configurable switchport feature makes collisions impossible to occur?

- A. auto speed
- B. VLANs
- C. full-duplex
- D. half-duplex

Answer: C

NEW QUESTION 3

Which organization provides certifications that ensure interoperability between WLAN vendors?

- A. Institute of Electrical and Electronics Engineers
- B. Federal Communications Commission
- C. Wi-Fi Alliance
- D. Internet Engineering Task Force

Answer: C

Explanation:

<https://www.wi-fi.org/certification>

NEW QUESTION 4

What is the maximum recommended distance for a 1 Gbps Ethernet connection using Cat 6 UTP-based cabling between a host and the switch where it is plugged in?

- A. 50 meters (164 feet)
- B. 100 meters (328 feet)
- C. 300 meters (984 feet)
- D. 15 meters (49 feet)

Answer: B

NEW QUESTION 5

Which represents a valid Basic Service Set Identifier (BSSID)?

- A. the radio and all its associated clients
- B. the name of the wireless network
- C. a group of radios and all its WLAN clients
- D. a radio's MAC address assigned to a WLAN

Answer: B

NEW QUESTION 6

Refer to Exhibit.

Version	IHL	Type of Service	Total Length	
Identification			Flags	Fragment Offset
TTL		Protocol	Checksum	
Source IP Address				
Destination IP Address				
Options				

To which protocol does the header belong?

- A. Internet Protocol version 6
- B. User Datagram Protocol
- C. Ethernet Protocol
- D. Transmission Control Protocol
- E. Internet Protocol

Answer: A

NEW QUESTION 7

Which traffic type is used for one-to-one communication?

- A. Broadcast
- B. Anycast
- C. Unicast
- D. Multicast

Answer: C

Explanation:

<https://www.omniseccu.com/tcpip/ipv6/unicast-multicast-anycast-types-of-network-communication-in-ipv6.php>

NEW QUESTION 8

Why do clients run the Address Resolution Protocol (ARP)?

- A. To discover the destination address of the Layer 3 header of IP packets.
- B. To discover the source address of the Layer 3 header of IP packets.
- C. To discover the destination address of the Layer 2 header that encapsulates IP packets.
- D. To discover the source address of the Layer 2 header that encapsulates IP packets.

Answer: B

NEW QUESTION 9

What are the key differences between L2 switches and routers? (Select two.)

- A. Switches build an ARP table, while routers build a port table.
- B. Switches build a MAC table while routers build a routing table.
- C. Switches are considered L2 devices, while routers are L4.
- D. Switches offer a considerably higher port density than routers.
- E. Routers offer a considerably higher port density than switches.

Answer: BD

NEW QUESTION 10

Which device provides high ethernet port density for connecting wired clients such as computers, IP phones, and printers? (Select two.)

- A. Wireless Router
- B. Router
- C. Access Point
- D. Multilayer Switches
- E. Switches

Answer: CD

NEW QUESTION 10

How many IP assignable addresses are contained in 10.0.128.0/23?

- A. 4094
- B. 254
- C. 510
- D. 512

Answer: D

NEW QUESTION 15

What is the binary equivalent of the decimal number of 233?

- A. 11010101
- B. 11101001
- C. 11100101
- D. 11110001

Answer: B

NEW QUESTION 17

What are the nonoverlapping channels for Wi-Fi communications in the 2.4 Ghz band?

- A. 1,6,11,andl3
- B. 1,6, and 11
- C. 1.7,11, and 14
- D. 1,7, and 13

Answer: B

NEW QUESTION 22

What is a true statement about wireless communications using Wi-Fi?

- A. Amplitude, phase, and frequency of radio waves are modulated to transmit data
- B. Wireless communications have a maximum range of 10 meters (30 feet)
- C. Amplitude, phase, and frequency of radio waves are modulated to increase range
- D. Wireless communications have a minimum range of 10 meters (30 feet)

Answer: C

NEW QUESTION 25

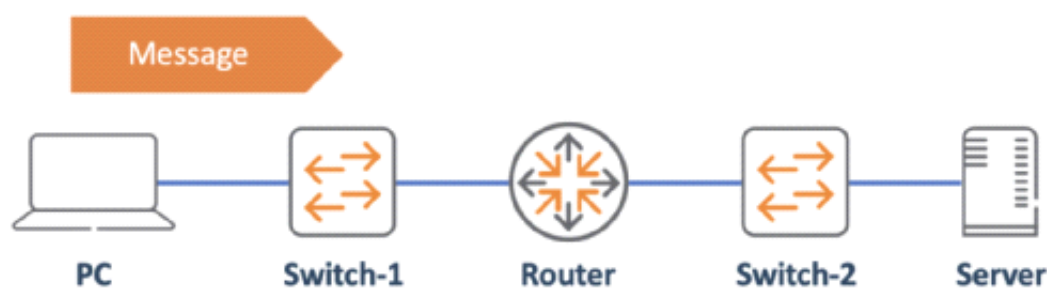
Which protocol provides frame delivery using physical addressing and error detection using frame check sequence?

- A. Link Layer Discovery Protocol
- B. Ethernet
- C. TCP/IP
- D. User Datagram Protocol

Answer: A

NEW QUESTION 29

Refer to Exhibit.



The PC is sending a message to the server. Which devices have performed Layer 2 encapsulation by the time the message arrives at the server? (Select two.)

- A. PC
- B. Server
- C. Router
- D. switch-2
- E. Switch-1

Answer: DE

NEW QUESTION 31

Given the 172.16.0.0 255.255.255.0 IP segment, how many IP addresses can be assigned to host and network devices?

- A. 126
- B. 6
- C. 128
- D. 4

Answer: C

NEW QUESTION 36

You are managing an ArubaOS-CX switch using the CLI. The current prompt reads "Switch(config-if>#". Which single CLI command should you issue to move back to the Manager context?

- A. end
- B. disable
- C. quit
- D. exit

Answer: A

NEW QUESTION 40

Which statements are true about Access Points? (Select two.)

- A. They use destination IP addresses to switch the packets.
- B. They bridge wireless frames to the wired network.
- C. They are used to interconnect wireless devices only.
- D. They offer wireless connectivity to endpoints.
- E. They only operate at Layer three of the OSI model.

Answer: AD

NEW QUESTION 45

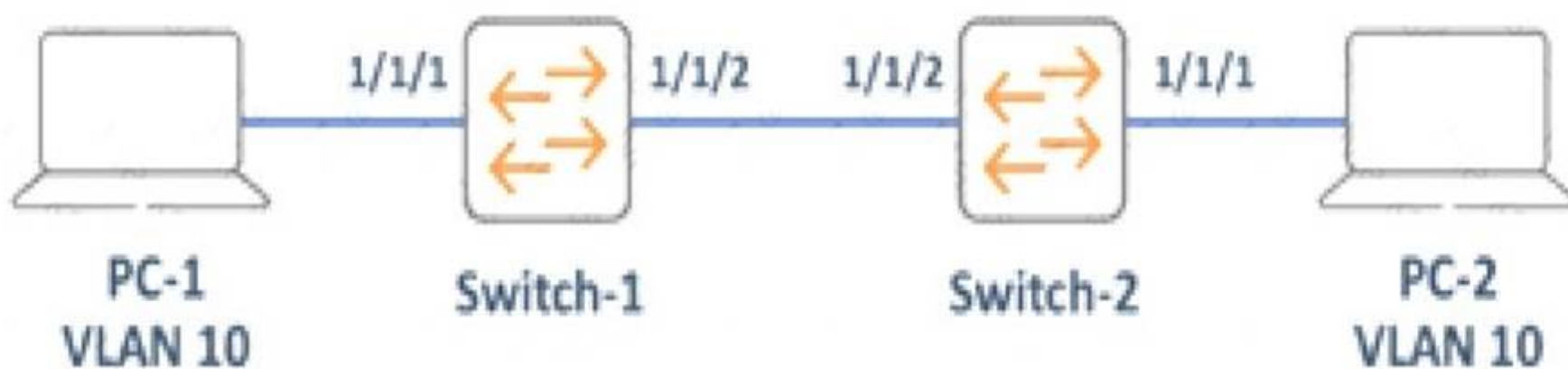
Which Wi-Fi technology assists with data privacy on open networks?

- A. Simultaneous Authentications of Equals (5AE)
- B. Opportunistic Wireless Encryption (OWE)
- C. Commercial National Security Algorithm (CNSA)
- D. Wi-Fi Protected Access 2(WPA2)

Answer: D

NEW QUESTION 50

Refer to Exhibit.



PC-1 and PC-2 are connected to Interfaces configured as access ports on VLAN 10. All other ports on Switch-1 and Switch-2 are in default settings. Which configuration is required on Both switches to allow inter-PC communication in the same Broadcast domain?

- ☐ interface 1/1/2 \$ routing \$ \$ vlan access 10 \$
- ☐ interface 1/1/2 \$ no routing \$ \$ vlan trunk allow 10 \$
- ☐ interface 1/1/2 \$ allow vlan 10 \$
- ☐ interface 1/1/2 \$ vlan access 10 \$ \$ vlan trunk native 1 \$

- A. Option A
- B. Option B
- C. Option C
- D. Option D

Answer: A

NEW QUESTION 55

Which statements are true about a router? (Select two.)

- A. They are considered layer two devices.
- B. They utilize protocols to learn all possible paths.
- C. They are considered layer four devices.
- D. They are considered layer three devices.
- E. They analyze source addresses to learn paths.

Answer: DE

NEW QUESTION 58

Which statement accurately describes an omnidirectional antenna?

- A. Radiates equal power in all directions in the Elevation Plane.
- B. Radiates almost equal power in all directions in the Vertical Plane.
- C. Radiates more power in a specific angle and less power in others.
- D. Radiates almost equal power in all directions in the Horizontal Plane.

Answer: A

NEW QUESTION 63

Which accurately describes the TCP/IP Model? (Select two.)

- A. It is a set of communication protocols used on TCP-based networks only.
- B. It specifies how to compress, fragment, encrypt, and analyze data.
- C. It specifies how to assemble, address, transmit, route, and disassemble a data packet.
- D. It is a set of communication protocols used on IP-based networks only.
- E. It is a set of communication protocols used on Ethernet-based networks only.

Answer: CD

NEW QUESTION 68

Which accurately describes the OSI Model?

- A. It is a reference model that describes data flow over the network using four layers.
- B. It is a reference model that is used to convert binary bits into analog signals.
- C. It is a reference model that explains how data is created by the application layer.
- D. It is a reference model that describes how data communications occur on a network.

Answer: D

NEW QUESTION 69

Which characteristic allows switches to mitigate collisions?

- A. The switches support VLANs that segment the collision domains.
- B. The switches use L3 protocols that eliminate collisions.
- C. The switches' ports are independent collision domains.
- D. The switches have proprietary features that help eliminate collisions.

Answer: A

NEW QUESTION 74

Which message is an example of Broadcast communication?

- A. DHCP offer
- B. ICMP Echo
- C. HTTP Get
- D. ARP Request

Answer: B

NEW QUESTION 78

What do the digits in the ArubaOS-CX switch interface numbering represent?

- A. Member/Slot/Port
- B. Slot/Member/Port
- C. Stack/Member/Port
- D. Module/Slot/Port

Answer: C

NEW QUESTION 83

.....

Relate Links

100% Pass Your HPE3-U01 Exam with ExamBible Prep Materials

<https://www.exambible.com/HPE3-U01-exam/>

Contact us

We are proud of our high-quality customer service, which serves you around the clock 24/7.

Viste - <https://www.exambible.com/>