

Nutanix

Exam Questions NCP-CI-Azure

Nutanix Certified Professional - Cloud Integration - Azure (NCP-CI-Azure v6.7)



NEW QUESTION 1

An administrator needs to configure the correct outbound requirement for a successful cluster deployment in Azure. Which destination must have an outbound rule to meet this requirement?

- A. <https://portal.nutanix.com/>*
- B. <https://downloads.cloud.nutanix.com/>*
- C. <https://support.nutanix.com/>*
- D. <https://nutanix.dev/>*

Answer: B

Explanation:

? Outbound Rule Necessity: For successful cluster deployment, certain outbound connections must be allowed to ensure proper download and configuration of resources.

? Critical Destination: "<https://downloads.cloud.nutanix.com/>" is a critical endpoint from which the Nutanix software and updates are downloaded during the cluster deployment process.

? Functionality: Ensuring an outbound rule for this destination allows the deployment to fetch necessary files and updates, enabling smooth cluster setup and operation.

? Other Destinations:

? Conclusion: Outbound connectivity to "<https://downloads.cloud.nutanix.com/>" is essential for downloading deployment resources.

References:

? Nutanix NC2 on Azure Network Configuration Guide

? Azure Network Security Documentation

NEW QUESTION 2

An administrator is seeking help with an ongoing NC2 issue. After reaching out to Nutanix support, the administrator is introduced to the NC2 specialist who can help troubleshoot the problem.

How can the administrator verify that the NC2 specialist has access to the necessary organizations?

- A. Provide the specialist with the administrator's login credentials.
- B. Confirm the Support Authorization on the organization is set to Full Access.
- C. Add the specialist as an admin user to the organizations.
- D. Ensure the specialist is assigned the RBAC role with proper permissions.

Answer: B

Explanation:

To verify that the NC2 specialist has access to the necessary organizations for troubleshooting the issue, the administrator should:

? Confirm that the Support Authorization on the organization is set to Full Access. This

ensures that the NC2 specialist has the required permissions to access the necessary resources and perform the necessary actions to resolve the issue.

Providing login credentials or adding the specialist as an admin user is not recommended due to security and privacy concerns. Ensuring the specialist is assigned the correct RBAC role is another valid approach but confirming the support authorization directly ensures they have the needed access.

References

? Nutanix Support and Services

NEW QUESTION 3

Which web interface should be used to most efficiently terminate a Nutanix cloud cluster?

- A. AWS Console
- B. Prism Element Console
- C. NC2 Console
- D. Prism Central Console

Answer: C

Explanation:

To efficiently terminate a Nutanix cloud cluster, the NC2 (Nutanix Cloud Clusters) Console should be used. The NC2 Console provides the necessary tools and interface specifically designed for managing and terminating Nutanix clusters within cloud environments, ensuring a seamless and efficient process.

References

? Nutanix Cloud Clusters Documentation

NEW QUESTION 4

What action is performed in Azure when an instance is reported as being in a terminated state, but NC2 expects it to be in a running state?

- A. NC2 restarts the AHV host.
- B. NC2 alerts the administrator that a manual replacement is required.
- C. NC2 automatically reconnects with the instance.
- D. NC2 condemns the host and triggers replacement of the host.

Answer: D

Explanation:

? Instance Termination Detection: When an instance in Azure is reported as being in a terminated state but NC2 expects it to be running, the system will automatically take corrective actions.

? Host Condemnation and Replacement: NC2 will condemn the host, marking it as unusable, and will then trigger the replacement process to ensure that the cluster maintains its required capacity and performance levels. This automatic handling ensures minimal disruption to the workloads running on the cluster.

References:

? Nutanix NC2 Automated Management Features

? Azure Instance State Documentation

NEW QUESTION 5

An administrator has recently deployed an NC2 on azure cluster, but does not have connectivity back to the on-premises environment. The administrator would like to start working on configuring the new cluster.
What is the best way to get access to Prism Central?

- A. Deploy a Jump Host in an external VNet and peer the VNets for communication between Prism Central VNet and the Jump Host VNet.
- B. Deploy a Jump Host instance in the same subnet as the bare-metal.
- C. Deploy a Jump Host in an external VNet and peer the VNets for communication between bare-metal VNet and the Jump Host VNet.
- D. Deploy a Jump HostInstanceIn the Prism Central VNet inside a delegated subnet

Answer: A

Explanation:

? Jump Host Deployment:A Jump Host provides a secure method to access the NC2 environment when direct connectivity is unavailable. Deploying it in an external VNet allows flexibility in managing network access and security.

? VNet Peering:By peering the external VNet (where the Jump Host is deployed) with the VNet containing Prism Central, the administrator can establish a communication pathway. This setup enables secure and controlled access to Prism Central from the Jump Host.

References:

? Azure VNet Peering Documentation

? Nutanix NC2 Configuration and Access Guide

NEW QUESTION 6

An administrator is planning to expand an NC2 on Azure cluster.
Which statement is true regarding prerequisites for expanding the cluster?

- A. Cluster must be in a Cluster Stopped state.
- B. Cluster must have at least three nodes.
- C. Cluster must be in a Cluster Connected state.
- D. Cluster must have at least five nodes.

Answer: C

Explanation:

? Cluster State Requirement: To expand a cluster, it must be operational and in a connected state to ensure seamless integration of additional nodes.

? Cluster Stopped State: If the cluster is stopped, it cannot perform expansion operations.

? Minimum Nodes Requirement: There is no minimum node count prerequisite for expanding the cluster as long as the cluster is connected.

? Cluster Connected State: Ensuring the cluster is connected verifies that it is operational and can communicate with additional nodes being added.

? Conclusion: The cluster must be in a Cluster Connected state to expand successfully.

References:

? Nutanix Clusters Expansion Guide

? Azure NC2 Configuration Documentation

NEW QUESTION 7

A company has just adopted Nutanix as their technology of choice and is preparing to deploy Nutanix Cloud Clusters (NC@)
Which step must be taken first to gain access to the NC2 console?

- A. Start a free trial via Billing Portal.
- B. Navigate to doud.nutanix.com.
- C. Create a My Nutanix account.
- D. Open a support case with Nutanix.

Answer: C

Explanation:

? Initial Access: To gain access to the NC2 console, users need to create an account on the Nutanix platform.

? My Nutanix Account: Creating a My Nutanix account provides access to the Nutanix console, support, and other resources.

? Free Trial and Billing Portal: Starting a free trial or accessing the billing portal can be subsequent steps but require an initial account.

? Support Case: Opening a support case is not necessary for initial access but might be needed for specific issues later.

? Conclusion: Creating a My Nutanix account is the first step to accessing the NC2 console and other Nutanix services.

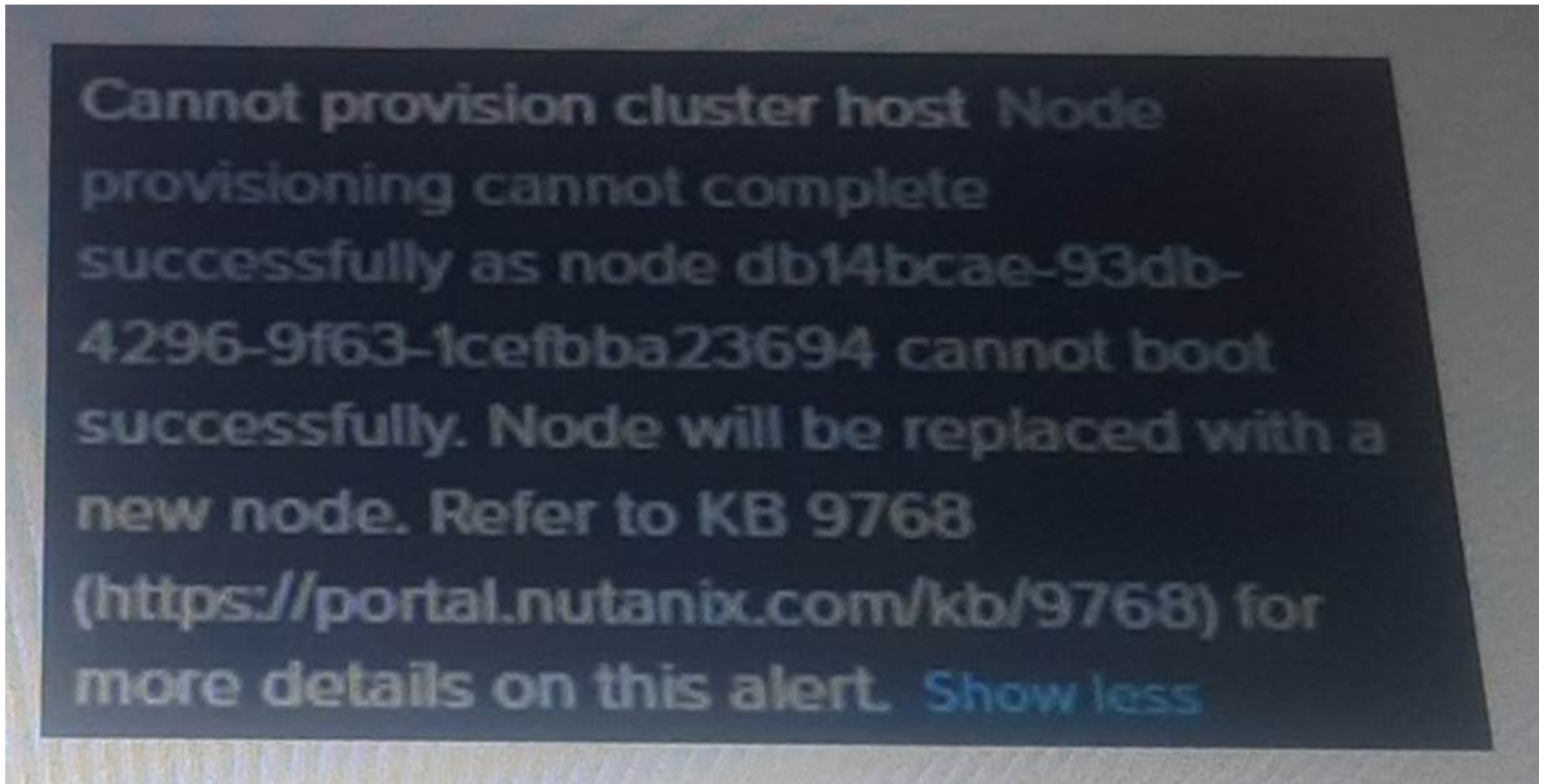
References:

? Nutanix Account Creation Guide

? Getting Started with Nutanix NC2

NEW QUESTION 8

Exhibit.



An administrator is trying to figure out why the NC2 cluster deployment in Azure failed. Which issue might be the cause?

- A. The administrator has not specified a DNS server during deployment.
- B. The selected bare metal node type is not supported in the deployment region.
- C. DNS servers are not reachable from cluster management VNet.
- D. The company does not have sufficient NCI/AOS licenses.

Answer: B

Explanation:

? Error Message Analysis: The error message indicates that the node cannot boot successfully and will be replaced with a new node. This points towards an issue related to the specific node type or configuration.

? Bare Metal Node Support: One common cause for such deployment failures is selecting a bare metal node type that is not supported in the chosen deployment region. Azure has specific regions where certain node types are available, and attempting to use an unsupported node type in a region can result in provisioning failures.

References:

? Nutanix KB 9768 for troubleshooting deployment issues: KB 9768

? Azure Region Availability Documentation

? Nutanix NC2 on Azure Deployment Guide

NEW QUESTION 9

An NC2 on Azure environment requires that outside networks are allowed to be routed to a Nutanix User VPC from outside the cluster when using a No-Nat path. Which configuration will satisfy this requirement?

- A. Internally routable network address which shares the same address space of the Nutanix setVPC
- B. Externally routable IP address which shares the same address space of the Native Azure Subnet
- C. Internally routable network address which shares the same address space of the Native Azure Subnet
- D. Externally routable IP address which shares the same address space of the Nutanix User VPC

Answer: D

Explanation:

? No-NAT Path Requirement: For a No-NAT path to function, the external networks must be able to route traffic directly to the Nutanix User VPC without translation.

? Externally Routable IP Address: The externally routable IP address ensures that traffic from outside networks can reach the Nutanix User VPC.

? Address Space Compatibility: Sharing the same address space as the Nutanix User VPC allows for seamless integration and communication between the external network and the User VPC.

References:

? Azure Virtual Network Documentation on IP Addressing

? Nutanix NC2 Configuration Guide on No-NAT Networking

NEW QUESTION 10

An administrator has created a new overlay network. Which is intended for the company's user VMs.

The cluster has these characteristics:

* Policy-based Routing is not configured

* Only using external NAT

* DNS Server: 8.8.8.8

After adding a few VMs to the network, the administrator notices that the VMs cannot reach resources outside the network, even by IP address.

What is a likely cause?

- A. The local cluster does not have access to the underlying network.
- B. The DNS server is unreachable.

- C. The VPC connection is not established.
- D. A default route was not configured for the external subnet.

Answer: D

Explanation:

When the administrator notices that the VMs cannot reach resources outside the network, even by IP address, it is likely that a default route was not configured for the external subnet. The default route is essential for directing traffic from the VMs to external networks. Without it, the VMs will not know how to route traffic to external destinations, which leads to connectivity issues.

References

- ? Azure Virtual Network Documentation
- ? Nutanix Flow Networking Best Practices

NEW QUESTION 10

Which interface must be used to deploy NC2?

- A. Foundation running in a Cloud Virtual Machine
- B. Cloud Provider portal
- C. NC2 Tile within the my.nutanix.com portal
- D. Prism Central Dashboard

Answer: C

Explanation:

? my.nutanix.com Portal: This portal provides access to various Nutanix services and features, including the NC2 deployment interface.

? NC2 Tile: The NC2 tile within the portal is specifically designed for deploying and managing Nutanix Cloud Clusters. It provides the necessary tools and settings to initiate and configure NC2 clusters on Azure or other cloud environments.

References:

- ? Nutanix NC2 Deployment Guide
- ? my.nutanix.com Portal Documentation

NEW QUESTION 14

An administrator needs to ensure API calls are executing successfully from NC2 to manage Azure resources.

Which cluster outbound to Azure connections are required to satisfy this task?

- A. azure-support.nutan/x.com
- B. portal.azure.com
- C. managementazure.com
- D. apikeys.nutanix.com

Answer: D

Explanation:

? API Key Management: For NC2 to manage Azure resources successfully, it needs to authenticate and authorize API calls. This is typically handled through API keys, which are managed via specific endpoints.

? Required Connection: The endpoint `apikeys.nutanix.com` is crucial for managing these API keys. Ensuring connectivity to this endpoint allows NC2 to verify and utilize the API keys needed for interacting with Azure services.

References:

- ? Nutanix NC2 API Configuration Guide
- ? Azure API Management Documentation

NEW QUESTION 17

When configuring permissions for an Azure subscription, which role is required to delegate minimum permissions for the Azure AD App registration?

- A. Azure user Access Administrator role
- B. Azure Reader role
- C. Azure Contributor role
- D. Azure Custom role defined by Nutanix

Answer: A

Explanation:

? Azure AD App Registration: When setting up an application registration in Azure AD, specific permissions are required to delegate access.

? User Access Administrator Role: This role has the necessary permissions to manage user access to Azure resources, including delegating permissions for app registrations.

? Comparison of Roles:

? Conclusion: The Azure User Access Administrator role is required to delegate minimum permissions for Azure AD App registration.

References:

- ? Azure Role-Based Access Control Documentation
- ? Azure AD App Registration Guide

NEW QUESTION 20

An administrator deploys a new NC2 cluster in Azure in a new subscription. No VPN or Express Route exists.

Which two actions will allow the administrator access to Prism Central to start the configuration? (Choose two.)

- A. Deploy a Jump Host VM instance in an external VNet and peer the VNets.
- B. Deploy a Jump Host VM instance and NAT Gateway in an external VNet and peer the VNets.
- C. Deploy a Jump Host VM instance in the Prism Central VNet inside a delegated subnet.

D. Deploy a Jump Host VM instance in the Prism Central VNet inside a non-delegated subnet.

Answer: AC

Explanation:

? Jump Host VM in External VNet with VNet Peering:

? Jump Host VM in Prism Central VNet Inside a Delegated Subnet:

References:

? Azure VNet Peering Documentation

? Nutanix NC2 Networking and Access Configuration Guide

NEW QUESTION 22

An administrator ran into an issue during an NC2 cluster deployment on Azure. The administrator has logged a case with Nutanix Support.

Support has requested the following logs from NC2 on Azure in order to diagnose the deployment issue:

* Cluster_agent

* Host_agent

* Hostsetup

What action should the administrator take to ensure the collect the appropriate logs?

A. SSH to the CVM and use the logbay collect command.

B. Login to Prism Element to access the CVM's console and run the logbay collectcommand.

C. SSH to the PCVM and use the logbay collect command.

D. Login to Prism Element Web Console to generate a Logbay bundle.

Answer: B

Explanation:

To collect the appropriate logs (Cluster_agent, Host_agent, and Hostsetup) for diagnosing the deployment issue with Nutanix Support, the administrator should:

? Log in to Prism Element to access the Controller VM (CVM) console.

? Run thelogbay collectcommand from the CVM console. This command collects the necessary logs and packages them for support.

This method ensures that the correct logs are gathered in a format that Nutanix Support can analyze.References

? Nutanix Support Documentation on Log Collection

NEW QUESTION 25

An administrator is planning an NC2 deployment in Azure and wants to connect the company's on-premises datacenter to the cloud environment.

What connectivity solution should the administrator use to avoid traffic between the locations flowing over the public internet?

A. ExpressRoute

B. Site-to-Site VPN

C. Point-to-Site VPN

D. VTEP Gateways

Answer: A

Explanation:

To connect the company's on-premises datacenter to the Azure cloud environment while avoiding traffic over the public internet, the administrator should use Azure ExpressRoute. ExpressRoute provides a private connection to Azure, offering more reliability, faster speeds, and lower latencies compared to typical internet connections. This service ensures that data traffic does not traverse the public internet, enhancing security and performance.References

? Azure ExpressRoute Overview

NEW QUESTION 28

An administrator manager a virtual desktop environment running on an NC2 cluster in Azure.

The desktop running on the cluster need to contact resources on-premises through the ExpressRoute that has been setup. The save on bandwidth from the on-premises environment to Azure, the administrator wants the desktops to access the internet through an Azure NAT Gateway.

Which coNfiguration will best accomplish this task?

A. Set the default route of 0.0.0.0/0 for the Nutanix User VPC pointing to the external-No- NAT network.

B. Set the default route of 0.0.0.0/0 for the Nutanix User VPC pointing to the external-NAT network

C. Set a route to the on-premises subnet for the Nutanix User VPC pointing to the external-No-NAT network.

D. Set the default route of 0.0.0.0/0 for the Nutanix User VPC pointing to the external-NAT network

E. Set a route to the on-premises subnet for the Nutanix User VPC pointing to the external-NAT network.

F. Assign all desktops Floating IPs and use an external-NAT network in the transit VP

G. Set the default route of 0.0.0.0/0 for the Nutanix User VPC pointing to the external-NAT network.

Answer: B

Explanation:

? Default Route for Internet Traffic:By setting the default route of 0.0.0.0/0 for the Nutanix User VPC pointing to the external-NAT network, all internet-bound traffic from the desktops will be routed through the Azure NAT Gateway, conserving bandwidth on the ExpressRoute connection.

? On-Premises Route:Setting a specific route to the on-premises subnet for the Nutanix User VPC pointing to the external-No-NAT network ensures that traffic destined for on-premises resources bypasses the NAT Gateway and utilizes the ExpressRoute connection, optimizing the use of network paths.

References:

? Azure NAT Gateway Documentation

? Nutanix NC2 Networking Configuration Guide

NEW QUESTION 32

Which two options are prerequisites for deploying an NC2 cloud cluster in Azure? (Choose two.)

A. An Azure Express Route circuit

- B. A valid CIDR range
- C. A my.nutanix.com account
- D. An on Premises Prism Central environment

Answer: BC

Explanation:

? Valid CIDR Range:When deploying an NC2 cloud cluster in Azure, a valid CIDR range is necessary to define the IP address space for the cluster and its associated networks. This range ensures that there are no conflicts with existing network configurations and provides sufficient addresses for the cluster resources.

? My Nutanix Account:A my.nutanix.com account is required to access Nutanix services and manage NC2 deployments. This account allows administrators to log in, configure settings, and manage their Nutanix environment on Azure.

References:

- ? Nutanix NC2 on Azure Deployment Guide
- ? Azure Virtual Network Documentation

NEW QUESTION 36

What is the minimum number of nodes needed to deploy an RF3 NC2 cluster?

- A. 1
- B. 3
- C. 5
- D. 7

Answer: C

Explanation:

? Replication Factor (RF3):RF3 requires that data is replicated across three different nodes to ensure data durability and fault tolerance. This replication scheme allows the system to tolerate the failure of two nodes simultaneously.

? Minimum Node Requirement for RF3:To meet the RF3 requirements while maintaining operational capability, a minimum of five nodes is necessary. This configuration ensures that there are enough nodes to distribute the data and provide the necessary redundancy.

References:

- ? Nutanix Replication Factor Documentation
- ? Nutanix NC2 on Azure Deployment Guide

NEW QUESTION 38

An administrator is tasked to identify the firewall requirement and submit the port request to the requirement team before the clusters deployment. Which requirement should the administrator ensure is implement on the corporate firewall?

- A. ICMP can disable but the connectivity should be enabled between the CVM
- B. PrismElement, and Prism Central.
- C. Allow bi-directional Internet Control Message Protocol (ICMP) traffic between the CVMs, Prism Element, and Prism Central.
- D. Allow uni-directional internet Control Message Protocol (ICMP) traffic between the CVMs, femer and Prism Central.
- E. ICMP and connectivity can be disabled between the CVMs, Prism Element, and Prism Central

Answer: B

Explanation:

? ICMP Traffic:ICMP is essential for network diagnostics and troubleshooting, such as ping and traceroute, which help in monitoring the connectivity and health of the network.

? Bi-Directional Traffic:Allowing bi-directional ICMP traffic ensures that all nodes (CVMs, Prism Element, and Prism Central) can both send and receive diagnostic messages, which is crucial for maintaining proper communication and network stability.

References:

- ? Nutanix Networking and Connectivity Requirements
- ? Corporate Firewall Configuration Guidelines

NEW QUESTION 43

An administrator is tasked with configuring connectivity between an on-premises datacenter and Azure. Which two connectivity options are supported? (Choose two.)

- A. VPN
- B. Direct Connect
- C. ExpressRoute
- D. Leased Line

Answer: AC

Explanation:

For configuring connectivity between an on-premises datacenter and Azure, the two supported options are:

? VPN (Virtual Private Network):Site-to-Site VPN allows you to create a secure connection from your on-premises network to Azure over the public internet using IPsec/IKE protocols.

? ExpressRoute:Provides a private connection between your on-premises infrastructure and Azure, ensuring traffic does not traverse the public internet. Both options provide secure and reliable connectivity, with ExpressRoute offering enhanced performance and security due to its private connection.References

- ? Azure VPN Gateway
- ? Azure ExpressRoute Overview

NEW QUESTION 48

Which address must Azure Directory Service be able to resolve when deploying a new NC2 cluster?

- A. Download.cloud.nutanix.com
- B. Apikeys.nutanix.com
- C. Gateway-external-api.cloud.nutanix.com
- D. Gateway-internal-api-cloud.nutanix.com

Answer: C

Explanation:

? Azure Directory Service Role: Azure Directory Service must be able to resolve specific Nutanix URLs to ensure proper communication and functionality during the deployment of an NC2 cluster.
? Critical Endpoint: The address "Gateway-external-api.cloud.nutanix.com" is critical for establishing external API communications required for the deployment and management of the NC2 cluster.
? DNS Resolution: Proper DNS resolution of this address ensures that the Azure Directory Service can interact with Nutanix services and APIs necessary for cluster operations.
? Verification Process:
? Importance: Without resolving this address, the deployment process might face connectivity issues, leading to potential deployment failures.
References:
? Nutanix NC2 on Azure Setup Guide
? Azure Active Directory Integration

NEW QUESTION 49

An administrator just completed the initial account setup tasks for NC2 on Azure, such as creating a My Nutanix account, starting a 30-day free trial for NC2 on Azure, and setting up the Azure account and subscription.
Which two additional actions should the administrator take before creating a cluster? (Choose two.)

- A. Purchasing an Azure savings plan
- B. Allowlisting the Azure Subscription
- C. Creating an App Registration
- D. Configure VPN for connectivity

Answer: BC

Explanation:

? Allowlisting the Azure Subscription: This step ensures that the Azure subscription is recognized and permitted by Nutanix Cloud Clusters (NC2). Without allowlisting, the necessary resources and permissions within the Azure subscription may not be available for NC2, potentially blocking the creation and management of clusters.
? Creating an App Registration: This involves setting up an application within Azure Active Directory (AAD) to enable secure communication between NC2 and Azure. The app registration process includes assigning permissions and obtaining necessary authentication credentials, facilitating the interaction and management of Azure resources by NC2.
References:
? Nutanix Documentation on NC2 Setup
? Azure Active Directory Application Registration Guide

NEW QUESTION 50

An administrator has been tasked with scoping an NC2 on Azure deployment. One of the requirements is to ensure that the bare metal instance will support up to 20 TB of storage capacity.
Which bare metal instance should the administrator choose?

- A. ND96asr
- B. AN36P
- C. AN36
- D. HB176rs

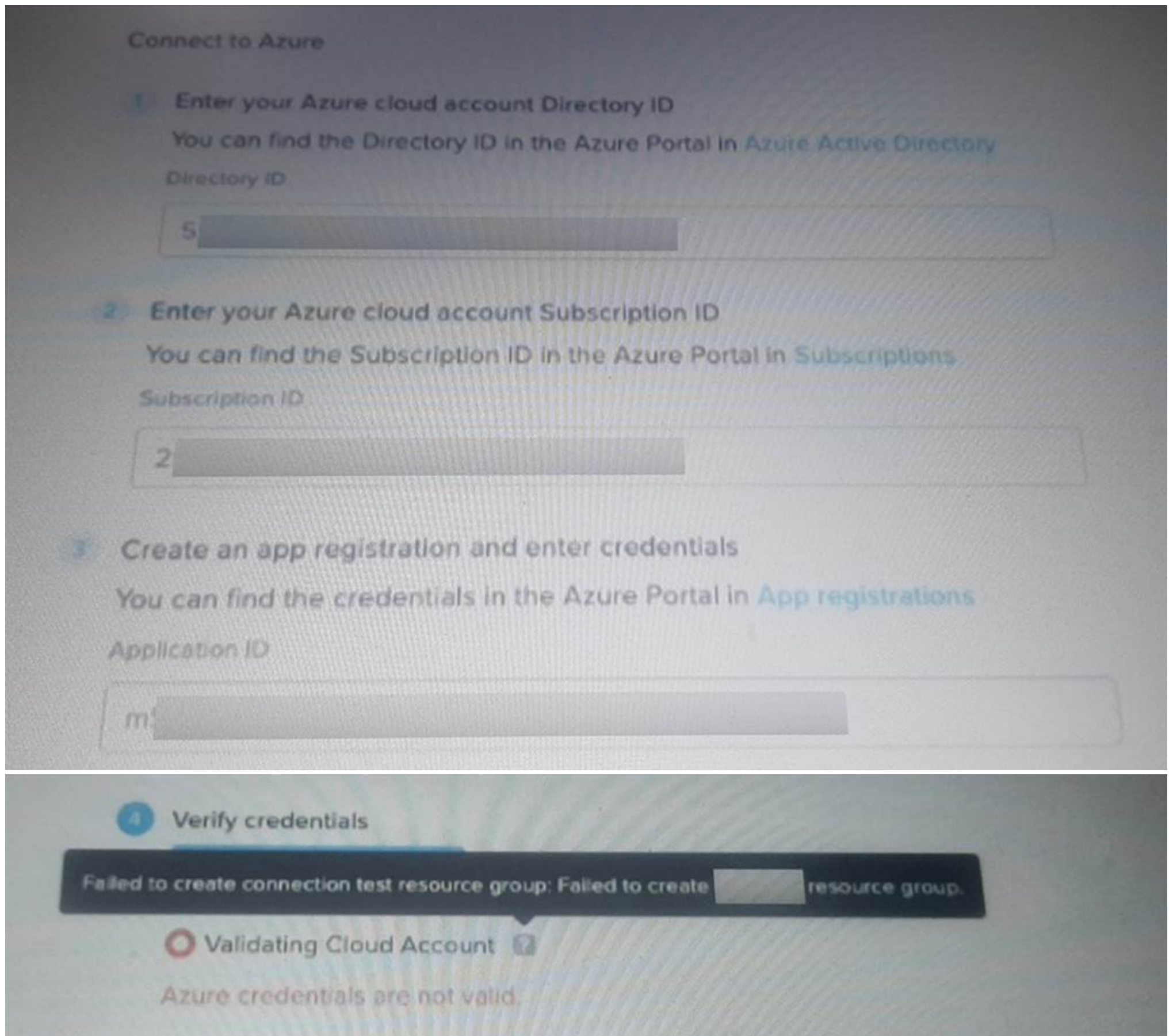
Answer: B

Explanation:

? Storage Capacity Requirement: The requirement specifies that the bare metal instance must support up to 20 TB of storage capacity.
? Instance Selection: Among the provided options, the AN36P instance is designed to support higher storage capacities and performance needs.
? AN36P Capabilities: The AN36P instance is optimized for storage-intensive applications and provides the necessary hardware specifications to handle up to 20 TB of storage.
? Comparison with Other Instances:
? Conclusion: Based on the requirements and instance specifications, AN36P is the most suitable choice for supporting up to 20 TB of storage.
References:
? Nutanix NC2 Instance Types
? Azure Virtual Machine Sizes

NEW QUESTION 51

Exhibit



Which action should the administrator take to troubleshoot the error shown in the exhibit?

- A. Check the NC2 organization permissions.
- B. Check the Azure AD App registration Client Secret.
- C. Check the Azure subnet delegation status.
- D. Check the PC VNet is peered correctly.

Answer: B

Explanation:

To troubleshoot the error shown in the exhibit where Azure credentials are not valid and the creation of the resource group failed, the administrator should:
 ? Verify that the Azure AD App registration has been correctly configured, especially the Client Secret.

? Ensure that the Client Secret is valid, has not expired, and matches what has been entered in the configuration.

This step is crucial because an invalid or expired Client Secret would prevent the validation of Azure credentials and the creation of necessary resources.

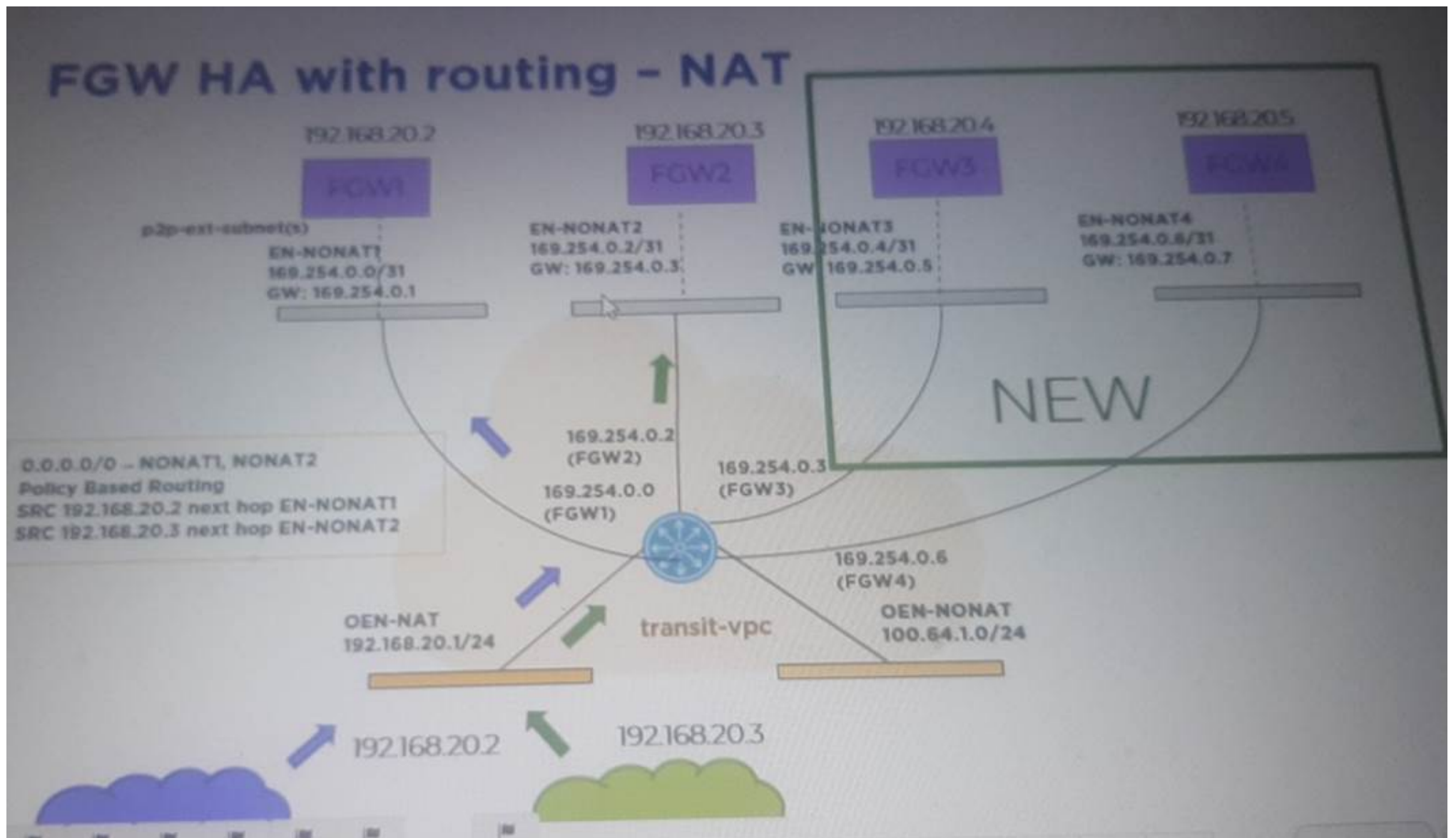
References

? Azure AD App Registration and Secrets Management

? Nutanix Cluster Configuration Documentation

NEW QUESTION 52

Exhibit



An NC2 on Azure cluster was deployed with two Flow Gateway in HA (FGW1 and FGW2). After a week of use, four bare-metal nodes were added to the NC2 cluster and additional workloads were added. The existing workloads were using floating IPs to allow inbound traffic to communicate with the running workloads on the NC2 cluster.

It was determined that additional bandwidth for north/south traffic would be needed. Two additional Flow Gateways were added (FGW3 and FGW4) from the NC2 portal configuration menu.

The existing workloads prior to expansion on the NC2 cluster will be able to use which Flow Gateways using the NAT traffic path after the expansion?

- A. They will be able to use FGW3 and FGW4 once the NC2 workloads reboots.
- B. All four Flow Gateways using a MAC/Hash algorithm.
- C. Only the Flow Gateway each workload was using prior to expansion.
- D. All four Flow Gateways.

Answer: C

Explanation:

In the NC2 on Azure cluster scenario, the existing workloads were using floating IPs for inbound traffic before the addition of new Flow Gateways (FGW3 and FGW4). The NAT traffic path established initially will continue to direct traffic through the originally assigned Flow Gateways (FGW1 and FGW2). The existing workloads will not automatically utilize the new Flow Gateways (FGW3 and FGW4) without a reconfiguration or reboot, which reassigns the NAT paths.

References

? Nutanix Flow Networking and Configuration Guide

NEW QUESTION 57

.....

Thank You for Trying Our Product

We offer two products:

1st - We have Practice Tests Software with Actual Exam Questions

2nd - Questions and Answers in PDF Format

NCP-CI-Azure Practice Exam Features:

- * NCP-CI-Azure Questions and Answers Updated Frequently
- * NCP-CI-Azure Practice Questions Verified by Expert Senior Certified Staff
- * NCP-CI-Azure Most Realistic Questions that Guarantee you a Pass on Your FirstTry
- * NCP-CI-Azure Practice Test Questions in Multiple Choice Formats and Updatesfor 1 Year

100% Actual & Verified — Instant Download, Please Click
[Order The NCP-CI-Azure Practice Test Here](#)