

PMI

Exam Questions CAPM

Certified Associate in Project Management (PMI-100)



NEW QUESTION 1

- (Exam Topic 3)

A work package has been scheduled to cost \$1,000 to complete and was to be finished today. As of today, the actual expenditure is \$1,200 and approximately half of the work has been completed. What is the cost variance?

- A. -700
- B. -200
- C. 200
- D. 500

Answer: A

NEW QUESTION 2

- (Exam Topic 3)

Change requests are an output from which Project Integration Management process?

- A. Direct and Manage Project Execution
- B. Develop Project Management Plan
- C. Close Project
- D. Develop Project Charter

Answer: A

NEW QUESTION 3

- (Exam Topic 3)

Which type of analysis is used to examine project results through time to determine if performance is improving or deteriorating?

- A. Control chart
- B. Earned value
- C. Variance
- D. Trend

Answer: D

NEW QUESTION 4

- (Exam Topic 3)

Which schedule compression technique has phases or activities done in parallel that would normally have been done sequentially?

- A. Crashing
- B. Fast tracking
- C. Leads and lags adjustment
- D. Parallel task development

Answer: B

NEW QUESTION 5

- (Exam Topic 3)

When does Monitor and Control Risks occur?

- A. At project initiation
- B. During work performance analysis
- C. Throughout the life of the project
- D. At project milestones

Answer: C

NEW QUESTION 6

- (Exam Topic 3)

An electronics firm authorizes a new project to develop a faster, cheaper, and smaller laptop after improvements in the industry and electronics technology. With which of the following strategic considerations is this project mainly concerned?

- A. Customer request
- B. Market demand
- C. Technological advance
- D. Strategic opportunity

Answer: C

NEW QUESTION 7

- (Exam Topic 3)

Which component of the human resource management plan describes when and how project team members are acquired and how long they will be needed?

- A. Resource breakdown structure
- B. Staffing management plan
- C. Project organizational chart

D. Scope management plan

Answer: B

NEW QUESTION 8

- (Exam Topic 3)

Which enterprise environmental factors are considered during Estimate Costs?

- A. Market conditions and published commercial information
- B. Company structure and market conditions
- C. Commercial information and company structure
- D. Existing human resources and market conditions

Answer: A

NEW QUESTION 9

- (Exam Topic 3)

Which type of managers do composite organizations involve?

- A. Functional managers and manager of project managers
- B. Functional managers only
- C. Project managers only
- D. Technical managers and project managers

Answer: A

NEW QUESTION 10

- (Exam Topic 3)

Who selects the appropriate processes for a project?

- A. Project stakeholders
- B. Project sponsor and project stakeholder
- C. Project manager and project team
- D. Project manager and project sponsor

Answer: C

NEW QUESTION 10

- (Exam Topic 3)

An output of the Develop Project Team process is:

- A. change requests
- B. team performance assessments
- C. project staff assignments
- D. project documents updates

Answer: B

NEW QUESTION 13

- (Exam Topic 3)

Managing ongoing production of goods and services to ensure business continues efficiently describes which type of management?

- A. Portfolio
- B. Project
- C. Program
- D. Operations

Answer: D

NEW QUESTION 15

- (Exam Topic 3)

Which document includes the project scope, major deliverables, assumptions, and constraints?

- A. Project charter
- B. Project scope statement
- C. Scope management plan
- D. Project document updates

Answer: B

NEW QUESTION 19

- (Exam Topic 3)

When is a Salience Model used?

- A. In a work breakdown structure (WBS)

- B. During quality assurance
- C. In stakeholder analysis
- D. During quality control (QC)

Answer: C

NEW QUESTION 24

- (Exam Topic 3)

The scope management plan is a subsidiary of which project document?

- A. Schedule management plan
- B. Project management plan
- C. Quality management plan
- D. Resource management plan

Answer: B

NEW QUESTION 29

- (Exam Topic 3)

Which of the following is contained within the communications management plan?

- A. An organizational chart
- B. Glossary of common terminology
- C. Organizational process assets
- D. Enterprise environmental factors

Answer: B

NEW QUESTION 32

- (Exam Topic 3)

What is the function of a Project Management Office (PMO)?

- A. To focus on the coordinated planning, prioritization, and execution of projects and subprojects that are tied to the parent organizations or the client's overall business objectives.
- B. To coordinate and manage the procurement of projects relevant to the parent organization's business objectives and to administer the project charters accordingly.
- C. To administer performance reviews for the project manager and the project team members and to handle any personnel and payroll issues.
- D. To focus on the specified project objectives and to manage the scope, schedule, cost, and quality of the work packages.

Answer: A

NEW QUESTION 35

- (Exam Topic 3)

Which tools or techniques will a project manager use for Develop Project Team?

- A. Negotiation
- B. Roles and responsibilities
- C. Recognition and rewards
- D. Prizing and promoting

Answer: C

NEW QUESTION 39

- (Exam Topic 3)

What name(s) is (are) associated with the Plan-Do-Check-Act cycle?

- A. Pareto
- B. Ishikawa
- C. Shewhart-Deming
- D. Delphi

Answer: C

NEW QUESTION 44

- (Exam Topic 3)

Which of the following is a narrative description of products, services, or results to be delivered by a project?

- A. Project statement of work
- B. Business case
- C. Accepted deliverable
- D. Work performance information

Answer: A

NEW QUESTION 49

- (Exam Topic 3)

Most experienced project managers know that:

- A. every project requires the use of all processes in the PMBOK® Guide.
- B. there is no single way to manage a project.
- C. project management techniques are risk free.
- D. there is only one way to manage projects successfully.

Answer: B

NEW QUESTION 51

- (Exam Topic 3)

While implementing an approved change, a critical defect was introduced. Removing the defect will delay the product delivery. What is the MOST appropriate approach to managing this situation?

- A. Utilize the change control process.
- B. Crash the schedule to fix the defect.
- C. Leave the defect in and work around it.
- D. Fast-track the remaining development.

Answer: A

NEW QUESTION 54

- (Exam Topic 3)

Organizations perceive risks as:

- A. events that will inevitably impact project and organizational objectives.
- B. the effect of uncertainty on their project and organizational objectives.
- C. events which could have a negative impact on project and organizational objectives.
- D. the negative impact of undesired events on their project and organizational objectives.

Answer: B

NEW QUESTION 58

- (Exam Topic 3)

What is a hierarchically organized depiction of the identified project risks arranged by risk category?

- A. Risk register
- B. Risk breakdown structure (RBS)
- C. Risk management plan
- D. Risk category

Answer: B

NEW QUESTION 63

- (Exam Topic 3)

What are the formal and informal policies, procedures, and guidelines that could impact how the project's scope is managed?

- A. Organizational process assets
- B. Enterprise environmental factors
- C. Project management processes
- D. Project scope management plan

Answer: A

NEW QUESTION 68

- (Exam Topic 3)

As part of a mid-project evaluation, the project sponsor has asked for a forecast of the total project cost. What should be used to calculate the forecast?

- A. BAC
- B. EAC
- C. ETC
- D. WBS

Answer: B

NEW QUESTION 72

- (Exam Topic 3)

Definitions of probability and impact, revised stakeholder tolerances, and tracking are components of which subsidiary plan?

- A. Cost management plan
- B. Quality management plan
- C. Communications management plan
- D. Risk management plan

Answer: D

NEW QUESTION 77

- (Exam Topic 3)

What is the probability of occurrence if the risk rating is 0.56 and the impact if the risk does occur is very high (0.80)?

- A. 0.45
- B. 0.56
- C. 0.70
- D. 1.36

Answer: C

NEW QUESTION 81

- (Exam Topic 3)

Projects are undertaken by an organization to support the:

- A. Product performance.
- B. Budget process.
- C. Collective capabilities.
- D. Organizational strategy.

Answer: D

NEW QUESTION 85

- (Exam Topic 3)

Which action should a project manager take to ensure that the project management plan is effective and current?

- A. Conduct periodic project performance reviews.
- B. Identify quality project standards.
- C. Follow ISO 9000 quality standards.
- D. Complete the quality control checklist.

Answer: A

NEW QUESTION 89

- (Exam Topic 3)

Which process involves documenting the actions necessary to define, prepare, integrate, and coordinate all subsidiary plans?

- A. Collect Requirements
- B. Direct and Manage Project Execution
- C. Monitor and Control Project Work
- D. Develop Project Management Plan

Answer: D

NEW QUESTION 94

- (Exam Topic 3)

Projects can be divided into phases to provide better management control. Collectively, what are these phases known as?

- A. Complete project phase
- B. Project life
- C. The project life cycle
- D. Project cycle

Answer: C

NEW QUESTION 97

- (Exam Topic 3)

Which of the following is an output of the Monitor and Control Project Work process?

- A. Change requests
- B. Performance reports
- C. Organizational process assets
- D. Project management plan

Answer: A

NEW QUESTION 98

- (Exam Topic 3)

The Human Resource Management processes are:

- A. Develop Human Resource Plan, Acquire Project Team, Develop Project Team, and Manage Project Team.
- B. Acquire Project Team, Manage Project Team, Manage Stakeholder Expectations, and Develop Project Team.
- C. Acquire Project Team, Develop Human Resource Plan, Conflict Management, and Manage Project Team.
- D. Develop Project Team, Manage Project Team, Estimate Activity Resources, and Acquire Project Team.

Answer: A

NEW QUESTION 99

- (Exam Topic 3)

A measure of cost performance that is required to be achieved with the remaining resources in order to meet a specified management goal and is expressed as the ratio of the cost needed for finishing the outstanding work to the remaining budget is known as the:

- A. budget at completion (BAC)
- B. earned value management (EVM)
- C. to-complete performance index
- D. cost performance index

Answer: C

NEW QUESTION 103

- (Exam Topic 3)

Which Develop Schedule tool and technique produces a theoretical early start date and late start date?

- A. Critical path method
- B. Variance analysis
- C. Schedule compression
- D. Schedule comparison bar charts

Answer: A

NEW QUESTION 106

- (Exam Topic 3)

Which illustrates the connection between work that needs to be done and its project team members?

- A. Work breakdown structure (WBS)
- B. Network diagrams
- C. Staffing management plan
- D. Responsibility assignment matrix (RAM)

Answer: D

NEW QUESTION 108

- (Exam Topic 3)

What type of project structure is a hierarchically organized depiction of the resources by type?

- A. Organizational breakdown structure (OBS)
- B. Resource breakdown structure (RBS)
- C. Work breakdown structure (WBS)
- D. Project breakdown structure (PBS)

Answer: B

NEW QUESTION 110

- (Exam Topic 3)

A project management office manages a number of aspects including the:

- A. Project scope, schedule, cost, and quality of the products of the work packages.
- B. Central coordination of communication management across projects.
- C. Assignment of project resources to best meet project objectives.
- D. Overall risk, overall opportunity, and interdependencies among projects at the enterprise level.

Answer: D

NEW QUESTION 114

- (Exam Topic 3)

The Define Scope process is in which of the following Process Groups?

- A. Initiating
- B. Planning
- C. Monitoring and Controlling
- D. Executing

Answer: B

NEW QUESTION 116

- (Exam Topic 3)

A change log for communications can be used to communicate to the appropriate stakeholders that there are changes:

- A. To the project management plan.
- B. To the risk register.
- C. In the scope verification processes.
- D. And their impact to the project in terms of time, cost, and risk.

Answer: D

NEW QUESTION 118

- (Exam Topic 3)

Outputs of the Control Communications process include:

- A. expert judgment and change requests
- B. work performance information and change requests
- C. project management plan updates and work performance information
- D. issue logs and organizational process assets updates

Answer: B

NEW QUESTION 120

- (Exam Topic 3)

The individual or group that provides resources and support for a project and is accountable for success is the:

- A. sponsor
- B. customer
- C. business partners
- D. functional managers

Answer: A

NEW QUESTION 121

- (Exam Topic 3)

Which of the following investigates the likelihood that each specific risk will occur?

- A. Risk register
- B. Risk audits
- C. Risk urgency assessment
- D. Risk probability and impact assessment

Answer: D

NEW QUESTION 123

- (Exam Topic 3)

Which is a tool or technique used in Define Scope?

- A. Templates, forms, and standards
- B. Change requests
- C. Product analysis
- D. Project assumptions

Answer: C

NEW QUESTION 125

- (Exam Topic 3)

To which process is work performance information an input?

- A. Administer Procurements
- B. Direct and Manage Project Execution
- C. Create WBS
- D. Perform Qualitative Risk Analysis

Answer: A

NEW QUESTION 130

- (Exam Topic 3)

Sharing good practices introduced or implemented in similar projects in the organization and/or industry is an example of:

- A. quality audits
- B. process analysis
- C. statistical sampling
- D. benchmarking

Answer: A

NEW QUESTION 133

- (Exam Topic 3)

What cost control technique is used to compare actual project performance to planned or expected performance?

- A. Cost aggregation
- B. Trend analysis
- C. Forecasting

D. Variance analysis

Answer: D

NEW QUESTION 138

- (Exam Topic 3)

The CPI is .92, and the EV is US\$172,500. What is the actual cost of the project?

- A. US\$158,700
- B. US\$172,500
- C. US\$187,500
- D. US\$245,600

Answer: C

NEW QUESTION 142

- (Exam Topic 3)

Plan Risk Management is the process of defining how to:

- A. Communicate identified risks to the project stakeholders.
- B. Conduct risk management activities for a project.
- C. Analyze the impact a specific risk may have on the project.
- D. Address unexpected risks that may occur during a project.

Answer: B

NEW QUESTION 144

- (Exam Topic 3)

An output of Control Schedule is:

- A. A project schedule network diagram
- B. A schedule management plan
- C. Schedule data
- D. Schedule forecasts

Answer: D

NEW QUESTION 149

- (Exam Topic 3)

Which group creativity technique asks a selected group of experts to answer questionnaires and provide feedback regarding the responses from each round of requirements gathering?

- A. The Delphi technique
- B. Nominal group technique
- C. Affinity diagram
- D. Brainstorming

Answer: A

NEW QUESTION 153

- (Exam Topic 3)

The integrative nature of project management requires which Process Group to interact with the other Process Groups?

- A. Planning
- B. Executing
- C. Monitoring and Controlling
- D. Project Management

Answer: C

NEW QUESTION 158

- (Exam Topic 3)

Which tool and technique identifies inefficient and ineffective policies, processes, and procedures?

- A. Scope audits
- B. Scope reviews
- C. Quality audits
- D. Control chart

Answer: C

NEW QUESTION 162

- (Exam Topic 3)

The process of identifying and documenting the specific actions to be performed to produce the project deliverables is known as:

- A. Define Activities.
- B. Sequence Activities.
- C. Define Scope.
- D. Control Schedule.

Answer: A

NEW QUESTION 167

- (Exam Topic 3)

What is the definition of Direct and Manage Project Execution?

- A. Integrating all planned activities
- B. Performing the activities included in the plan
- C. Developing and maintaining the plan
- D. Execution of deliverables

Answer: B

NEW QUESTION 171

- (Exam Topic 3)

What type of planning is used where the work to be accomplished in the near term is planned in detail, while work in the future is planned at a higher level?

- A. Finish-to-start planning
- B. Rolling wave planning
- C. Short term planning
- D. Dependency determination

Answer: B

NEW QUESTION 175

- (Exam Topic 3)

The procurement process that documents agreements and related documentation for future reference is known as:

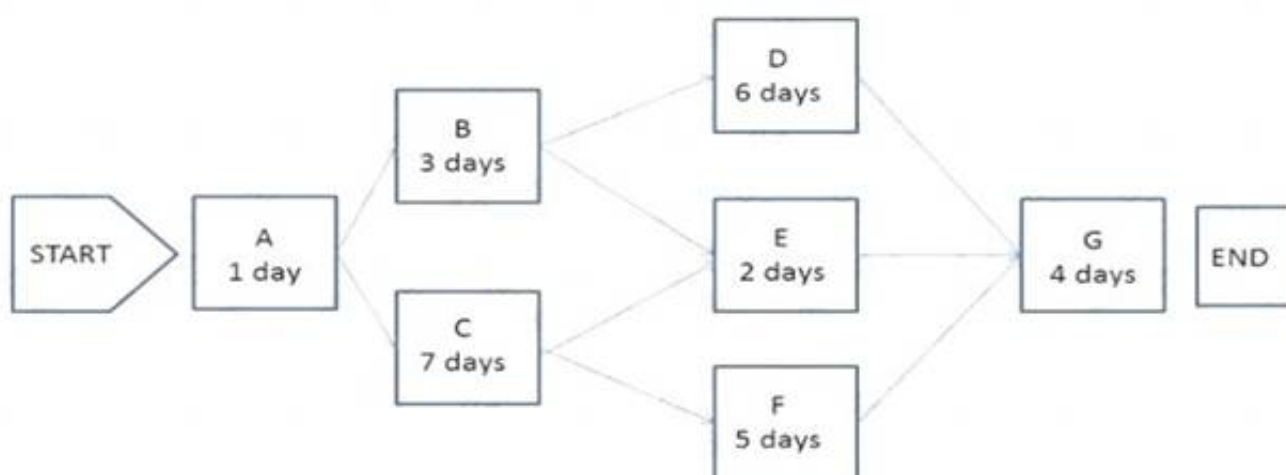
- A. Plan Procurements.
- B. Control Procurements.
- C. Close Procurements.
- D. Conduct Procurements.

Answer: C

NEW QUESTION 177

- (Exam Topic 2)

The following is a network diagram for a project.



The total float for the project is how many days?

- A. 3
- B. 5
- C. 7
- D. 9

Answer: A

NEW QUESTION 179

- (Exam Topic 2)

An example of a group decision-making technique is:

- A. nominal group technique
- B. majority
- C. affinity diagram
- D. multi-criteria decision analysis

Answer: B

NEW QUESTION 182

- (Exam Topic 2)

A stakeholder expresses a need not known to the project manager. The project manager most likely missed a step in which stakeholder management process?

- A. Plan Stakeholder Management
- B. Identify Stakeholders
- C. Manage Stakeholder Engagement
- D. Control Stakeholder Engagement

Answer: A

NEW QUESTION 186

- (Exam Topic 2)

Which output is the approved version of the time-phased project budget?

- A. Resource calendar
- B. Scope baseline
- C. Trend analysis
- D. Cost baseline

Answer: D

NEW QUESTION 189

- (Exam Topic 2)

The degree, amount, or volume of risk that an organization or individual will withstand is known as its risk:

- A. Analysis
- B. Appetite
- C. Tolerance
- D. Response

Answer: C

NEW QUESTION 193

- (Exam Topic 2)

A project requires a component with well-understood specifications. Performance targets are established at the outset, and the final contract price is determined after completion of all work based on the seller's performance. The most appropriate agreement with the supplier is:

- A. Cost Plus Incentive Fee (CPIF).
- B. Fixed Price Incentive Fee (FPIF).
- C. Cost Plus Award Fee (CPAF).
- D. Fixed Price with Economic Price Adjustment (FP-EPA).

Answer: B

NEW QUESTION 196

- (Exam Topic 2)

During which process does the project team receive bids and proposals?

- A. Conduct Procurements
- B. Plan Procurements
- C. Estimate Costs
- D. Control Budget

Answer: A

NEW QUESTION 197

- (Exam Topic 2)

Project Scope Management is primarily concerned with:

- A. Developing a detailed description of the project and product.
- B. Determining how requirements will be analyzed, documented, and managed.
- C. Defining and controlling what is and is not included in the project.
- D. Formalizing acceptance of the completed project deliverables.

Answer: C

NEW QUESTION 201

- (Exam Topic 2)

When a project is undertaken to reduce defects in a product or service, the objective of the project is to create a/an:

- A. improvement
- B. program
- C. result
- D. portfolio

Answer:

A

NEW QUESTION 206

- (Exam Topic 2)

Organizational process assets, a lessons-learned database, and historical information are all inputs to which process?

- A. Plan Cost Management
- B. Plan Scope Management
- C. Plan Stakeholder Management
- D. Plan Schedule Management

Answer: C

NEW QUESTION 207

- (Exam Topic 2)

The most appropriate project life cycle model for an environment with a high level of change and extensive stakeholder involvement in projects is:

- A. adaptive
- B. reflexive
- C. predictive
- D. iterative

Answer: A

NEW QUESTION 210

- (Exam Topic 2)

Which action is included in the Control Costs process?

- A. Identify how the project costs will be planned, structured, and controlled
- B. Determine policies, objectives, and responsibilities to satisfy stakeholder needs
- C. Develop an approximation of the monetary resources needed to complete project activities
- D. Monitor cost performance to isolate and understand variances from the approved cost baseline

Answer: D

NEW QUESTION 213

- (Exam Topic 2)

Which output of Project Cost Management consists of quantitative assessments of the probable costs required to complete project work?

- A. Activity cost estimates
- B. Earned value management
- C. Cost management plan
- D. Cost baseline

Answer: A

NEW QUESTION 217

- (Exam Topic 2)

Technical capability, past performance, and intellectual property rights are examples of:

- A. performance measurement criteria
- B. source selection criteria
- C. product acceptance criteria
- D. phase exit criteria

Answer: B

NEW QUESTION 222

- (Exam Topic 2)

An element of the modern quality management approach used to achieve compatibility with the International Organization for Standardization (ISO) is known as:

- A. Forecasting,
- B. Brainstorming.
- C. Historical databases.
- D. Cost of quality.

Answer: D

NEW QUESTION 223

- (Exam Topic 2)

An output of the Perform Integrated Change Control process is:

- A. Deliverables.
- B. Validated changes.
- C. The change log.
- D. The requirements traceability matrix.

Answer: C

NEW QUESTION 227

- (Exam Topic 2)

Which document in the project management plan can be updated in the Plan Procurement Management process?

- A. Budget estimates
- B. Risk matrix
- C. Requirements documentation
- D. Procurement documents

Answer: C

NEW QUESTION 229

- (Exam Topic 2)

In project management, a temporary project can be:

- A. Completed without planning
- B. A routine business process
- C. Long in duration
- D. Ongoing to produce goods

Answer: C

NEW QUESTION 232

- (Exam Topic 2)

Which type of dependency used in the Sequence Activities process is sometimes referred to as preferred logic, preferential logic, or soft logic?

- A. Internal
- B. External
- C. Discretionary
- D. Mandatory

Answer: C

NEW QUESTION 237

- (Exam Topic 2)

A complete set of concepts, terms, and activities that make up an area of specialization is known as:

- A. a Knowledge Area
- B. a Process Group
- C. program management
- D. portfolio management

Answer: A

NEW QUESTION 242

- (Exam Topic 2)

A project manager should communicate to stakeholders about resolved project issues by updating the:

- A. project records
- B. project reports
- C. stakeholder notifications
- D. stakeholder register

Answer: C

NEW QUESTION 247

- (Exam Topic 2)

Which Process Group includes the Manage Stakeholder Engagement process?

- A. Executing
- B. Planning
- C. Monitoring and Controlling
- D. Initiating

Answer: A

NEW QUESTION 252

- (Exam Topic 2)

While processes in the Planning Process Group seek to collect feedback and define project documents to guide project work, organizational procedures dictate when the project planning:

- A. ends.
- B. begins.

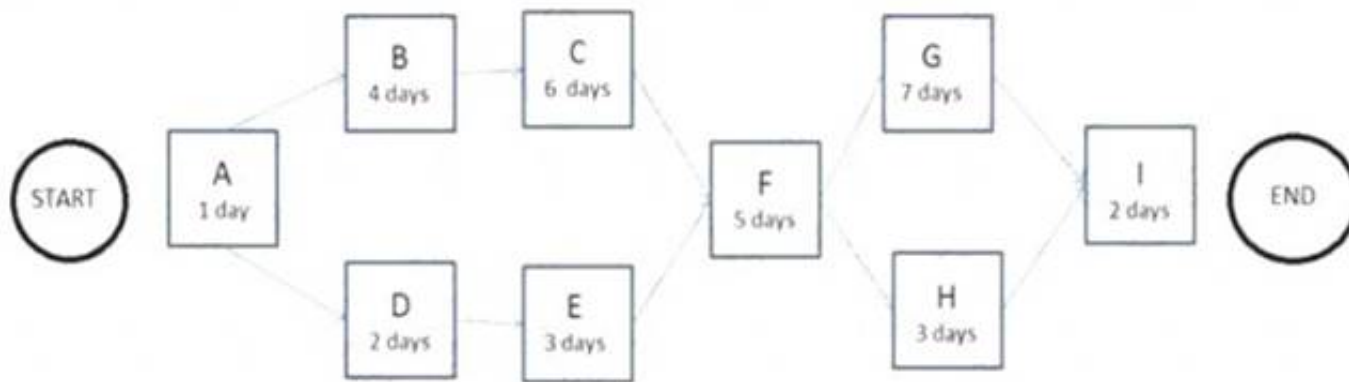
- C. delays.
- D. deviates.

Answer: A

NEW QUESTION 257

- (Exam Topic 2)

The following is a network diagram for a project.



The total float for the project is how many days?

- A. 5
- B. 9
- C. 12
- D. 14

Answer: B

NEW QUESTION 258

- (Exam Topic 2)

A project team member agrees to change a project deliverable after a conversation with an external stakeholder. It is later discovered that the change has had an adverse effect on another deliverable. This could have been avoided if the project team had implemented:

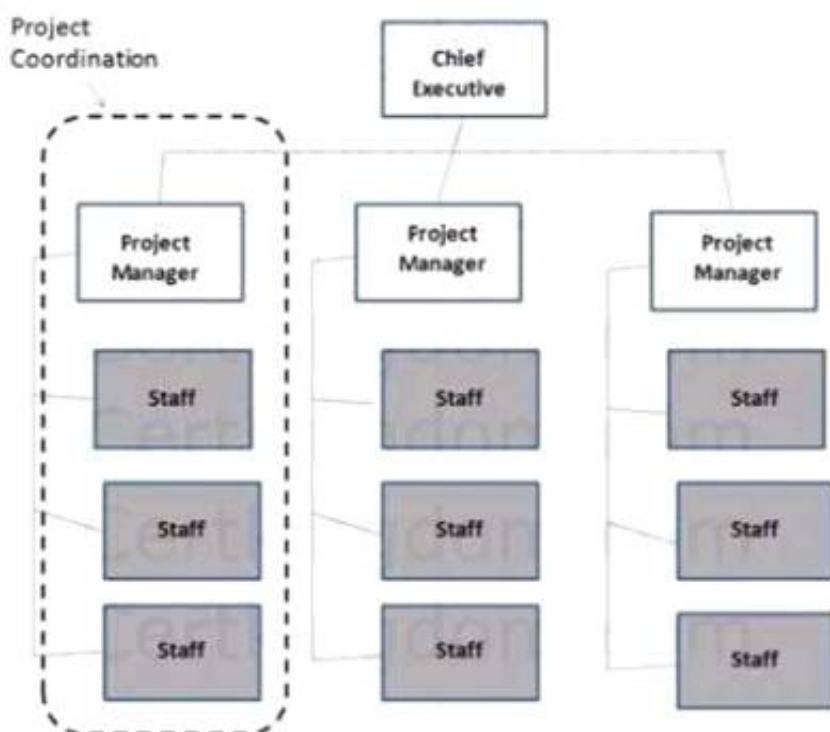
- A. Quality assurance.
- B. A stakeholder management plan.
- C. Project team building.
- D. Integrated change control.

Answer: D

NEW QUESTION 261

- (Exam Topic 2)

Which type of organizational structure is displayed in the diagram provided?



- A. Balanced matrix
- B. Projectized
- C. Strong matrix
- D. Functional

Answer: B

NEW QUESTION 265

- (Exam Topic 2)

The following chart contains information about the tasks in a project.

Task	PV	AC	EV
1	10,000	10,000	10,000
2	10,000	8,000	10,000
3	10,000	8,000	8,000
4	9,000	12,000	10,000
5	10,000	12,000	12,000
6	10,000	10,000	12,000
7	12,000	12,000	10,000
8	10,000	8,000	9,000
9	12,000	10,000	11,000

Based on the chart, what is the cost variance (CV) for Task 6?

- A. -2,000
- B. 1,000
- C. 2,000

Answer: D

NEW QUESTION 267

- (Exam Topic 2)

The following chart contains information about the tasks in a project.

Task	PV	AC	EV
1	10,000	10,000	10,000
2	10,000	8,000	10,000
3	10,000	8,000	8,000
4	9,000	12,000	10,000
5	10,000	12,000	12,000
6	10,000	10,000	12,000
7	12,000	12,000	10,000
8	10,000	8,000	9,000
9	12,000	10,000	11,000

Based on the chart, what is the schedule variance (SV) for Task 8?

- A. A.--2,000
- B. -1,000
- C. 1,000
- D. 2,000

Answer: B

NEW QUESTION 270

- (Exam Topic 2)

The chart below is an example of a:

ID	Requirements Description	Project Objectives	WBS Deliverables	Product Design	Product Development	Test Cases
001						
002						
003						

- A. Responsibility assignment matrix (RAM)
- B. Work breakdown structure (WBS)
- C. RACI chart
- D. Requirements traceability matrix

Answer: D

NEW QUESTION 273

- (Exam Topic 2)

The purpose of developing a project scope management plan is to:

- A. Manage the timely completion of the project.
- B. Ensure that the project includes all of the work required.
- C. Make sure the project will satisfy the needs for which it was begun.
- D. Reduce the risk of negative events in the project.

Answer: B

NEW QUESTION 275

- (Exam Topic 2)

Every project creates a unique product, service, or result that may be:

- A. tangible
- B. targeted
- C. organized
- D. variable

Answer: A

NEW QUESTION 276

- (Exam Topic 2)

Through whom do project managers accomplish work?

- A. Consultants and stakeholders
- B. Stakeholders and functional managers
- C. Project team members and consultants
- D. Project team members and stakeholders

Answer: D

NEW QUESTION 281

- (Exam Topic 2)

Completion of the product scope is measured against the product:

- A. prototypes
- B. requirements
- C. analyses
- D. benchmarks

Answer: B

NEW QUESTION 284

- (Exam Topic 2)

An intentional activity to modify a nonconforming product or product component is called:

- A. defect repair
- B. work repair
- C. corrective action
- D. preventive action

Answer: A

NEW QUESTION 286

- (Exam Topic 2)

The component of the risk management plan that documents how risk activities will be recorded is called:

- A. tracking
- B. scoping
- C. timing
- D. defining

Answer: A

NEW QUESTION 290

- (Exam Topic 2)

The degree of uncertainty an entity is willing to take on in anticipation of a reward is known as its risk:

- A. management
- B. response
- C. tolerance
- D. appetite

Answer: D

NEW QUESTION 295

- (Exam Topic 2)

Those who enter into a contractual agreement to provide services necessary for a project are:

- A. buyers
- B. sellers
- C. business partners
- D. product users

Answer: B

NEW QUESTION 299

- (Exam Topic 2)

An issue log is an input to which Project Human Resource Management process?

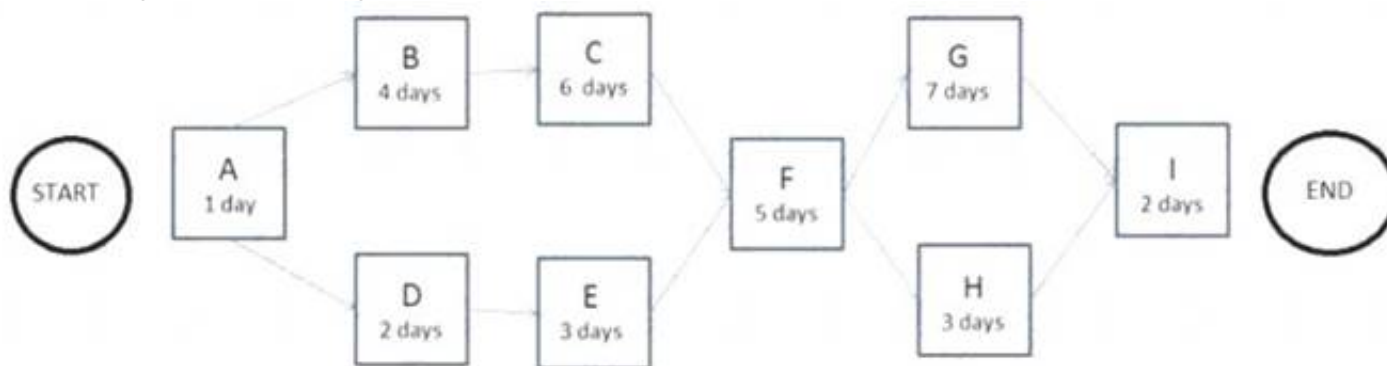
- A. Manage Project Team
- B. Acquire Project Team
- C. Plan Human Resource Management
- D. Develop Project Team

Answer: A

NEW QUESTION 303

- (Exam Topic 2)

The following is a network diagram for a project.



How many possible paths are identified for this project?

- A. 3
- B. 4
- C. 6
- D. 7

Answer: B

NEW QUESTION 305

- (Exam Topic 2)

The process of defining how the project scope will be validated and controlled is known as:

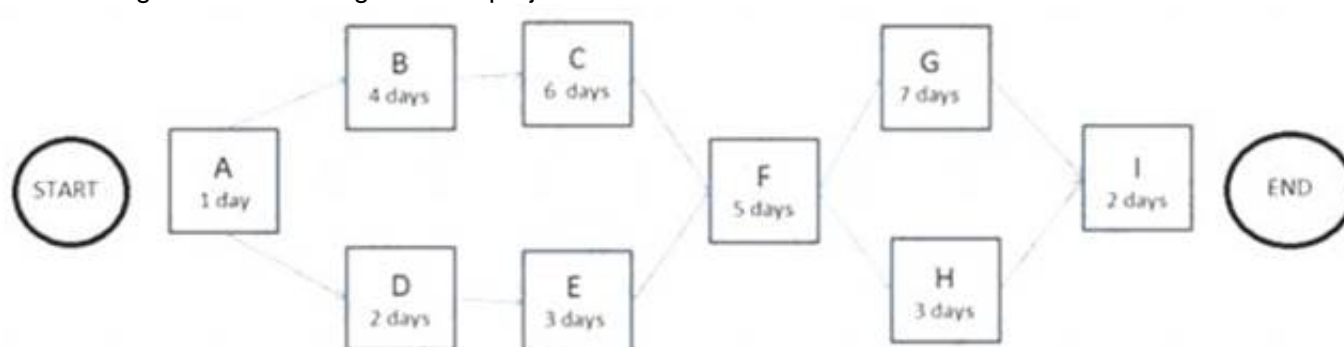
- A. Define Scope.
- B. Develop Project Management Plan.
- C. Plan Scope Management.
- D. Plan Quality Management.

Answer: C

NEW QUESTION 308

- (Exam Topic 2)

The following is a network diagram for a project.



The free float for Activity E is how many days?

- A. 2
- B. 3
- C. 5
- D. 8

Answer: C

NEW QUESTION 309

- (Exam Topic 2)

Which Perform Quality Assurance tool or technique is used to identify a problem, discover the underlying causes that lead to it, and develop preventative actions?

- A. Inspection
- B. Quality audits
- C. Design of experiments
- D. Root cause analysis

Answer: D

NEW QUESTION 312

- (Exam Topic 2)

Success is measured by benefits realization for a:

- A. strategic plan
- B. project
- C. portfolio
- D. program

Answer: C

NEW QUESTION 313

- (Exam Topic 2)

Which tool or technique used in the Control Procurements process can be conducted during the execution of the project to verify compliance with deliverables?

- A. Procurement documents
- B. Inspection and audits
- C. Estimate budget
- D. Risk register

Answer: B

NEW QUESTION 317

- (Exam Topic 2)

Which element does a project charter contain?

- A. Management reserves
- B. Work breakdown structure
- C. Stakeholder list
- D. Stakeholder register

Answer: C

NEW QUESTION 319

- (Exam Topic 2)

In the Define Activities process, the schedule management plan is used to:

- A. Capture the lessons learned from other projects for comparison.
- B. Contain the standard activity list.
- C. Document and support the project change requests.
- D. Prescribe the level of detail needed to manage the work.

Answer: D

NEW QUESTION 322

- (Exam Topic 2)

Stakeholders can be identified in later stages of the project because the Identify Stakeholders process should be:

- A. Continuous
- B. Discrete
- C. Regulated
- D. Arbitrary

Answer: A

NEW QUESTION 324

- (Exam Topic 2)

Job satisfaction, challenging work, and sufficient financial compensation are values related to which interpersonal skill?

- A. Influencing
- B. Motivation
- C. Negotiation
- D. Trust building

Answer:

B

NEW QUESTION 327

- (Exam Topic 2)

Which process is usually a rapid and cost-effective means of establishing priorities for Plan Risk Responses?

- A. Identify Risks
- B. Plan Risk Management
- C. Perform Qualitative Risk Analysis
- D. Perform Quantitative Risk Analysis

Answer: C

NEW QUESTION 330

- (Exam Topic 2)

The degree, amount, or volume of risk that an organization or individual will withstand is called risk:

- A. appetite
- B. tolerance
- C. threshold
- D. management

Answer: B

NEW QUESTION 331

- (Exam Topic 2)

Impacts to other organizational areas, levels of service, and acceptance criteria are typical components of which document?

- A. Business case
- B. Work breakdown structure
- C. Requirements documentation
- D. Risk register

Answer: C

NEW QUESTION 336

- (Exam Topic 2)

Project management processes ensure the:

- A. alignment with organizational strategy
- B. efficient means to achieve the project objectives
- C. performance of the project team
- D. effective flow of the project throughout its life cycle

Answer: D

NEW QUESTION 338

- (Exam Topic 2)

A tool and technique used in the Develop Project Charter process is:

- A. change control tools
- B. expert judgment
- C. meetings
- D. analytical techniques

Answer: B

NEW QUESTION 340

- (Exam Topic 2)

Which tool or technique is required in order to determine the project budget?

- A. Cost of quality
- B. Historical relationships
- C. Project management software
- D. Forecasting

Answer: B

NEW QUESTION 342

- (Exam Topic 2)

Which tools or techniques are used during the Close Project or Phase process?

- A. Reserve analysis and expert judgment
- B. Facilitation techniques and meetings
- C. Expert judgment and analytical techniques
- D. Performance reviews and meetings

Answer: C

NEW QUESTION 346

- (Exam Topic 2)

Which stakeholder approves a project's result?

- A. Customer
- B. Sponsor
- C. Seller
- D. Functional manager

Answer: A

NEW QUESTION 347

- (Exam Topic 2)

Which basic quality tool explains a change in the dependent variable in relationship to a change observed in the corresponding independent variable?

- A. Cause-and-effect diagram
- B. Histogram
- C. Control chart
- D. Scatter diagram

Answer: D

NEW QUESTION 349

- (Exam Topic 2)

Which enterprise environmental factors may influence Plan Schedule Management?

- A. Cultural views regarding time schedules and professional and ethical behaviors
- B. Historical information and change control procedures
- C. Risk control procedures and the probability and impact matrix
- D. Resource availability and organizational culture and structure

Answer: D

NEW QUESTION 353

- (Exam Topic 2)

Which item is a cost of conformance?

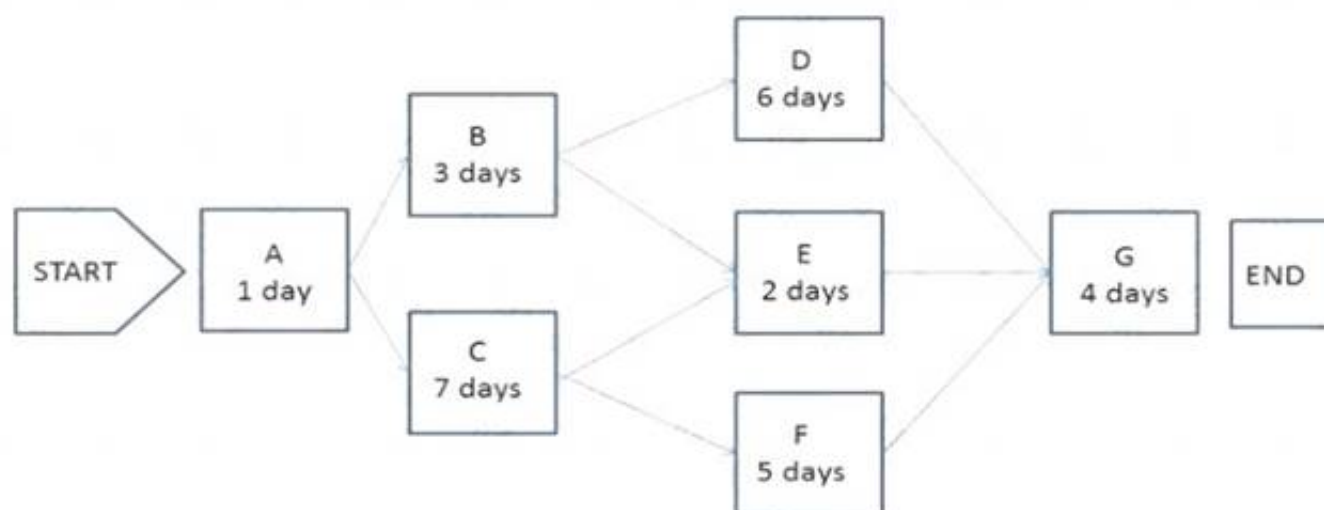
- A. Training
- B. Liabilities
- C. Lost business
- D. Scrap

Answer: A

NEW QUESTION 356

- (Exam Topic 2)

The following is a network diagram for a project.



The shortest non-critical path for the project is how many days in duration?

- A. 10
- B. 12
- C. 14
- D. 16

Answer: A

NEW QUESTION 358

- (Exam Topic 2)

Skills necessary for project management such as motivating to provide encouragement; listening actively; persuading a team to perform an action; and

summarizing, recapping, and identifying next steps are known as:

- A. organizational skills
- B. technical skills
- C. communication skills
- D. hard skills

Answer: C

NEW QUESTION 360

- (Exam Topic 1)

Which tool or technique is used in the Perform Integrated Change Control process?

- A. Decomposition
- B. Modeling techniques
- C. Resource optimization
- D. Meetings

Answer: D

NEW QUESTION 362

- (Exam Topic 1)

Which tool or technique is used in the Plan Scope Management process?

- A. Document analysis
- B. Observations
- C. Product analysis
- D. Expert judgment

Answer: D

NEW QUESTION 367

- (Exam Topic 1)

Which tool or technique is used in the Develop Project Management Plan process?

- A. Pareto diagram
- B. Performance reporting
- C. SWOT analysis
- D. Expert judgment

Answer: D

NEW QUESTION 369

- (Exam Topic 1)

Which input to the Manage Stakeholder Engagement process is used to document changes that occur during the project?

- A. Issue log
- B. Change log
- C. Expert judgment
- D. Change requests

Answer: B

NEW QUESTION 373

- (Exam Topic 1)

An input to the Plan Stakeholder Management process is:

- A. The project charter.
- B. The stakeholder analysis.
- C. A communication management plan.
- D. A stakeholder register.

Answer: D

NEW QUESTION 375

- (Exam Topic 1)

A key benefit of the Manage Communications process is that it enables:

- A. The best use of communication methods.
- B. An efficient and effective communication flow.
- C. Project costs to be reduced.
- D. The best use of communication technology.

Answer: B

NEW QUESTION 379

- (Exam Topic 1)

The iterative and interactive nature of the Process Groups creates the need for the processes in which Knowledge Area?

- A. Project Communications Management
- B. Project Integration Management
- C. Project Risk Management
- D. Project Scope Management

Answer: B

NEW QUESTION 382

- (Exam Topic 1)

Which tool or technique is used in validating the scope of a project?

- A. Facilitated workshops
- B. Interviews
- C. Inspection
- D. Meetings

Answer: C

NEW QUESTION 387

- (Exam Topic 1)

An input to the Manage Project Team process is:

- A. Work performance reports.
- B. Change requests.
- C. Activity resource requirements.
- D. Enterprise environmental factors.

Answer: A

NEW QUESTION 392

- (Exam Topic 1)

The definition of when and how often the risk management processes will be performed throughout the project life cycle is included in which risk management plan component?

- A. Timing
- B. Methodology
- C. Risk categories
- D. Budgeting

Answer: A

NEW QUESTION 394

- (Exam Topic 1)

An effective technique for resolving conflict that incorporates multiple viewpoints from differing perspectives to achieve consensus and commitment is:

- A. smooth/accommodate.
- B. force/direct,
- C. collaborate/problem solve,
- D. compromise/reconcile.

Answer: C

NEW QUESTION 397

- (Exam Topic 1)

Which risk management strategy seeks to eliminate the uncertainty associated with a particular upside risk by ensuring that the opportunity is realized?

- A. Enhance
- B. Share
- C. Exploit
- D. Accept

Answer: C

NEW QUESTION 402

- (Exam Topic 1)

A logical relationship in which a successor activity cannot start until a predecessor activity has finished is known as:

- A. Start-to-start (SS).
- B. Start-to-finish (SF).
- C. Finish-to-start (FS).
- D. Finish-to-finish (FF).

Answer: C

NEW QUESTION 406

- (Exam Topic 1)

Which Define Activities output extends the description of the activity by identifying the multiple components associated with each activity?

- A. Project document updates
- B. Activity list
- C. Activity attributes
- D. Project calendars

Answer: C

NEW QUESTION 409

- (Exam Topic 1)

Which process develops options and actions to enhance opportunities and reduce threats to project objectives?

- A. Identify Risks
- B. Control Risks
- C. Plan Risk Management
- D. Plan Risk Responses

Answer: D

NEW QUESTION 411

- (Exam Topic 1)

Which grid shows which resources are tied to work packages?

- A. Work breakdown structure (WBS)
- B. Responsibility assignment matrix (RAM)
- C. Project assignment chart
- D. Personnel assignment matrix

Answer: B

NEW QUESTION 415

- (Exam Topic 1)

Which Collect Requirements output links the product requirements to the deliverables that satisfy them?

- A. Requirements documentation
- B. Requirements traceability matrix
- C. Project management plan updates
- D. Project documents updates

Answer: B

NEW QUESTION 419

- (Exam Topic 1)

An element of the project scope statement is:

- A. Acceptance criteria.
- B. A stakeholder list.
- C. A summary budget,
- D. High-level risks.

Answer: A

NEW QUESTION 421

- (Exam Topic 1)

Which input to the Identify Stakeholders process provides information about internal or external parties related to the project?

- A. Procurement documents
- B. Communications plan
- C. Project charter
- D. Stakeholder register

Answer: C

NEW QUESTION 426

- (Exam Topic 1)

Reserve analysis is a tool and technique used in which process?

- A. Plan Risk Management
- B. Plan Risk Responses
- C. Identify Risks
- D. Control Risks

Answer: D

NEW QUESTION 427

- (Exam Topic 1)

During which process does a project manager review all prior information to ensure that all project work is completed and that the project has met its objectives?

- A. Monitor and Control Project Work
- B. Perform Quality Assurance
- C. Close Project or Phase
- D. Control Scope

Answer: C

NEW QUESTION 432

- (Exam Topic 1)

In which Knowledge Area is the project charter developed?

- A. Project Cost Management
- B. Project Scope Management
- C. Project Time Management
- D. Project Integration Management

Answer: D

NEW QUESTION 437

- (Exam Topic 1)

A project manager builds consensus and overcomes obstacles by employing which communication technique?

- A. Listening
- B. Facilitation
- C. Meeting management
- D. Presentation

Answer: B

NEW QUESTION 440

- (Exam Topic 1)

Which process identifies whether the needs of a project can best be met by acquiring products, services, or results outside of the organization?

- A. Plan Procurement Management
- B. Control Procurements
- C. Collect Requirements
- D. Plan Cost Management

Answer: A

NEW QUESTION 443

- (Exam Topic 1)

Which process involves defining, preparing, and coordinating all subsidiary plans and integrating them into a comprehensive plan?

- A. Direct and Manage Project Work
- B. Develop Project Management Plan
- C. Plan Quality Management
- D. Monitor and Control Project Work

Answer: B

NEW QUESTION 448

- (Exam Topic 1)

Which group is formally chartered and responsible for reviewing, evaluating, approving, delaying, or rejecting changes to the project and for recording and communicating decisions?

- A. Project team
- B. Focus group
- C. Change control board
- D. Project stakeholders

Answer: C

NEW QUESTION 453

- (Exam Topic 1)

Which document describes the necessary information to determine if a project is worth the required investment?

- A. Cost baseline
- B. Service level agreement
- C. Memorandum of understanding
- D. Business case

Answer: D

NEW QUESTION 456

- (Exam Topic 1)

The planned work contained in the lowest level of work breakdown structure (WBS) components is known as:

- A. Work packages.
- B. Accepted deliverables.
- C. The WBS dictionary.
- D. The scope baseline.

Answer: A

NEW QUESTION 459

- (Exam Topic 1)

Stakeholder satisfaction should be managed as a key project:

- A. Benefit
- B. Initiative
- C. Objective
- D. Process

Answer: C

NEW QUESTION 464

- (Exam Topic 1)

Which tool or technique is used in the Estimate Costs process?

- A. Acquisition
- B. Earned value management
- C. Vendor bid analysis
- D. Forecasting

Answer: C

NEW QUESTION 465

- (Exam Topic 1)

What are the Project Procurement Management processes?

- A. Conduct Procurements, Control Procurements, Integrate Procurements, and Close Procurements
- B. Estimate Procurements, Integrate Procurements, Control Procurements, and Validate Procurements
- C. Plan Procurement Management, Conduct Procurements, Control Procurements, and Close Procurements
- D. Plan Procurement Management, Perform Procurements, Control Procurements, and Validate Procurements

Answer: C

NEW QUESTION 470

- (Exam Topic 1)

An output of the Create WBS process is:

- A. Scope baseline.
- B. Change requests.
- C. Accepted deliverables.
- D. Variance analysis.

Answer: A

NEW QUESTION 475

- (Exam Topic 1)

Which input to the Manage Stakeholder Engagement process provides guidance on how stakeholders can best be involved in a project?

- A. Feedback analysis
- B. Stakeholder analysis
- C. Communication management plan
- D. Stakeholder management plan

Answer: D

NEW QUESTION 480

- (Exam Topic 1)

Which input provides suppliers with a clear set of goals, requirements, and outcomes?

- A. Procurement statement of work
- B. Purchase order
- C. Source selection criteria

D. Bidder conference

Answer: A

NEW QUESTION 482

- (Exam Topic 1)

The Plan Stakeholder Management process belongs to which Process Group?

- A. Executing
- B. Initiating
- C. Planning
- D. Monitoring and Controlling

Answer: C

NEW QUESTION 485

- (Exam Topic 1)

The ways in which the roles and responsibilities, reporting relationships, and staffing management will be addressed and structured within a project is described in the:

- A. Human resource management plan.
- B. Activity resource requirements.
- C. Personnel assessment tools,
- D. Multi-criteria decision analysis.

Answer: A

NEW QUESTION 487

- (Exam Topic 1)

External organizations that have a special relationship with the enterprise and provide specialized expertise are called:

- A. Customers.
- B. Business partners.
- C. Sellers.
- D. Functional managers.

Answer: B

NEW QUESTION 489

- (Exam Topic 1)

Which Knowledge Areas include processes from the Closing Process Group?

- A. Project Quality Management and Project Time Management
- B. Project Scope Management and Project Risk Management
- C. Project Stakeholder Management and Project Cost Management
- D. Project Integration Management and Project Procurement Management

Answer: D

NEW QUESTION 492

- (Exam Topic 1)

An input to the Identify Stakeholders process is:

- A. The project management plan.
- B. The stakeholder register.
- C. Procurement documents.
- D. Stakeholder analysis.

Answer: C

NEW QUESTION 495

- (Exam Topic 1)

A project in which the scope, time, and cost of delivery are determined as early as possible is following a life cycle that is:

- A. Adaptive
- B. Predictive
- C. Incremental
- D. Iterative

Answer: B

NEW QUESTION 497

- (Exam Topic 1)

Which process in Project Time Management includes reserve analysis as a tool or technique?

- A. Estimate Activity Resources
- B. Sequence Activities
- C. Estimate Activity Durations
- D. Develop Schedule

Answer: C

NEW QUESTION 499

- (Exam Topic 1)

Configuration identification, configuration status accounting, and configuration verification and audit are all activities in which process?

- A. Perform Quality Assurance
- B. Direct and Manage Project Work
- C. Monitor and Control Project Work
- D. Perform Integrated Change Control

Answer: D

NEW QUESTION 503

- (Exam Topic 1)

Which type of project management office (PMO) supplies templates, best practices, and training to project teams?

- A. Supportive
- B. Directive
- C. Controlling
- D. Instructive

Answer: A

NEW QUESTION 507

- (Exam Topic 1)

Regression analysis, failure mode and effect analysis (FMEA), fault tree analysis (FTA), and trend analysis are examples of which tool or technique?

- A. Expert judgment
- B. Forecasting methods
- C. Earned value management
- D. Analytical techniques

Answer: D

NEW QUESTION 511

- (Exam Topic 1)

A risk response strategy in which the project team shifts the impact of a threat, together with ownership of the response, to a third party is called:

- A. mitigate
- B. accept
- C. transfer
- D. avoid

Answer: C

NEW QUESTION 513

- (Exam Topic 1)

The review of a sellers progress toward achieving the goals of scope and quality within cost and schedule compared to the contract is known as:

- A. Work performance information.
- B. Inspections and audits.
- C. Payment systems.
- D. Procurement performance reviews.

Answer: D

NEW QUESTION 514

- (Exam Topic 1)

Typical outcomes of a project include:

- A. Products, services, and improvements.
- B. Products, programs, and services.
- C. Improvements, portfolios, and services.
- D. Improvements, processes, and products.

Answer: A

NEW QUESTION 515

- (Exam Topic 1)

Which type of dependency is established based on knowledge of best practices within a particular application area or some unusual aspect of the project in which a specific sequence is desired, even though there may be other acceptable sequences?

- A. External
- B. Internal
- C. Mandatory
- D. Discretionary

Answer: D

NEW QUESTION 519

- (Exam Topic 1)

Which process involves developing an approximation of the monetary resources needed to complete project activities?

- A. Estimate Costs
- B. Control Costs
- C. Determine Budget
- D. Plan Cost Management

Answer: A

NEW QUESTION 524

- (Exam Topic 1)

When does the project team determine which dependencies are discretionary?

- A. Before the Define Activities process
- B. During the Define Activities process
- C. Before the Sequence Activities process
- D. During the Sequence Activities process

Answer: D

NEW QUESTION 526

- (Exam Topic 1)

Which process involves subdividing project deliverables and project work into smaller, more manageable portions?

- A. Develop Schedule
- B. Create WBS
- C. Estimate Activity Resources
- D. Define Scope

Answer: B

NEW QUESTION 528

- (Exam Topic 1)

A project manager should document the escalation path for unresolved project risks in the:

- A. Change control plan
- B. Stakeholder register
- C. Risk log
- D. Communications management plan

Answer: D

NEW QUESTION 533

- (Exam Topic 1)

An output of the Develop Project Team process is:

- A. Organizational process assets.
- B. Enterprise environmental factors updates.
- C. Project staff assignments.
- D. Organizational charts and position descriptions.

Answer: B

NEW QUESTION 536

- (Exam Topic 1)

A method of obtaining early feedback on requirements by providing a working model of the expected product before actually building is known as:

- A. Benchmarking.
- B. Context diagrams.
- C. Brainstorming.
- D. Prototyping.

Answer: D

NEW QUESTION 539

- (Exam Topic 1)

Which tool or technique allows a large number of ideas to be classified into groups for review and analysis?

- A. Nominal group technique
- B. Idea/mind mapping
- C. Affinity diagram
- D. Brainstorming

Answer: C

NEW QUESTION 540

- (Exam Topic 1)

Which changes occur in risk and uncertainty as well as the cost of changes as the life cycle of a typical project progresses?

- A. Risk and uncertainty increase; the cost of changes increases.
- B. Risk and uncertainty increase; the cost of changes decreases.
- C. Risk and uncertainty decrease; the cost of changes increases.
- D. Risk and uncertainty decrease; the cost of changes decreases.

Answer: C

NEW QUESTION 541

- (Exam Topic 1)

A reward can only be effective if it is:

- A. Given immediately after the project is completed.
- B. Something that is tangible.
- C. Formally given during project performance appraisals.
- D. Satisfying a need valued by the individual.

Answer: D

NEW QUESTION 545

- (Exam Topic 1)

The Perform Integrated Change Control process occurs in which Process Group?

- A. Initiating
- B. Executing
- C. Monitoring and Controlling
- D. Planning

Answer: C

NEW QUESTION 546

- (Exam Topic 1)

Scope, schedule, and cost parameters are integrated in the:

- A. Performance measurement baseline.
- B. Analysis of project forecasts,
- C. Summary of changes approved in a period,
- D. Analysis of past performance.

Answer: A

NEW QUESTION 551

- (Exam Topic 1)

When alternative dispute resolution (ADR) is necessary, which tool or technique should be utilized?

- A. Interactive communication
- B. Claims administration
- C. Conflict management
- D. Performance reporting

Answer: B

NEW QUESTION 554

- (Exam Topic 1)

Using values such as scope, cost, budget, and duration or measures of scale such as size, weight, and complexity from a previous similar project as the basis for estimating the same parameter or measurement for a current project describes which type of estimating?

- A. Bottom-up
- B. Parametric
- C. Analogous
- D. Three-point

Answer:

C

NEW QUESTION 555

- (Exam Topic 1)

Sending letters, memos, reports, emails, and faxes to share information is an example of which type of communication?

- A. Direct
- B. Interactive
- C. Pull
- D. Push

Answer: D

NEW QUESTION 557

- (Exam Topic 1)

Which document defines how a project is executed, monitored and controlled, and closed?

- A. Strategic plan
- B. Project charter
- C. Project management plan
- D. Service level agreement

Answer: C

NEW QUESTION 561

- (Exam Topic 1)

Sensitivity analysis is typically displayed as a/an:

- A. Decision tree diagram.
- B. Tornado diagram.
- C. Pareto diagram.
- D. Ishikawa diagram.

Answer: B

NEW QUESTION 566

- (Exam Topic 1)

An example of a group decision-making technique is:

- A. Nominal group technique.
- B. Majority.
- C. Affinity diagram.
- D. Multi-criteria decision analysis.

Answer: B

NEW QUESTION 570

- (Exam Topic 6)

Which format can a network diagram take?

- A. Flow chart
- B. Control chart
- C. Affinity diagram
- D. Cause-and-effect diagram

Answer: A

NEW QUESTION 571

- (Exam Topic 6)

The project manager is distributing project communications, collecting and storing project information, and retrieving documents when required. In which process is the project manager involved?

- A. Monitor Communications
- B. Plan Communications Management
- C. Manage Communications
- D. Manage Stakeholder Engagement

Answer: C

NEW QUESTION 576

- (Exam Topic 6)

The features and functions that characterize a result, product, or service can refer to:

- A. project scope
- B. product scope
- C. service scope

D. product breakdown structure

Answer: B

NEW QUESTION 577

- (Exam Topic 6)

Which tasks should a project manager accomplish in order to manage project scope correctly?

- A. Defin
- B. Validate, and Control Scop
- C. Control Schedule; Control Costs and Manage Stakeholder Engagement
- D. Collect Requirement
- E. Define Scop
- F. Create WB
- G. Develop Schedule, and Manage Stakeholder Engagement
- H. Plan Scope Management; Collect Requirements; Defin
- I. Validate, and Control Scope; and Create WBS
- J. Defin
- K. Validate, and Control Scop
- L. Control Cost
- M. Manage Stakeholder Engagement, and keep budget under control

Answer: C

NEW QUESTION 578

- (Exam Topic 6)

What should a project manager use to determine how much money is needed to complete a project?

- A. Earned value management (EVM)
- B. Estimate at completion (EAC)
- C. Earned value analysis (EVA)
- D. Budget at completion (BAG)

Answer: B

NEW QUESTION 579

- (Exam Topic 6)

The project team is brainstorming on approaches to deliver the upcoming product launch for which the project has been chartered. The project manager is laying out hybrid, adaptive, iterative methods. What is the team trying to address?

- A. Co-location
- B. Lite-cycle
- C. Diversity
- D. Management

Answer: D

NEW QUESTION 584

- (Exam Topic 6)

Which is an example of analogous estimating?

- A. Estimates are created by individuals or groups with specialized knowledge.
- B. Estimates are created by using information about resources of previous similar projects.
- C. Estimates are created by analyzing data.
- D. Estimates are created at the task level and aggregated upwards.

Answer: B

NEW QUESTION 587

- (Exam Topic 6)

Why is tailoring in a project necessary?

- A. Requirements keep changing.
- B. An artifact must be produced.
- C. A tool or technique is required.
- D. Each project is unique.

Answer: D

Explanation:

Each project is unique, and the members of the project team should select the appropriate tools, techniques, inputs, and outputs from the PMBOK Guide.

NEW QUESTION 589

- (Exam Topic 6)

Which term refers to the work performed to deliver results with specified features and functions?

- A. Project scope

- B. Product scope
- C. Change request
- D. Acceptance criteria

Answer: A

NEW QUESTION 591

- (Exam Topic 6)

Which of the following documents are created as part of Project Integration Management?

- A. Project charter and project management plan
- B. Communications management plan and scope management plan
- C. Quality management plan and risk management plan
- D. Project scope statement and communications management plan

Answer: A

NEW QUESTION 592

- (Exam Topic 5)

Which risk response strategy is common for both positive and negative risks?

- A. Share
- B. Accept
- C. Mitigate
- D. Transfer

Answer: B

NEW QUESTION 593

- (Exam Topic 6)

Which conflict resolution technique produces the most lasting results?

- A. Withdraw/avoid
- B. Smooth/accommodate
- C. Compromise/reconcile
- D. Collaborate/problem solve

Answer: C

NEW QUESTION 595

- (Exam Topic 6)

A project manager is assigned to a strategic project. Senior management asks the project manager to give a presentation in order to request support that will ensure the success of the project.

Which entities will the project manager attempt to influence?

- A. The project and the organization
- B. The organization and the industry
- C. The subject matter experts and the project
- D. The change control board and the organization

Answer: D

NEW QUESTION 600

- (Exam Topic 5)

What happens to a stakeholder's project influence over time?

- A. Increases
- B. Decreases
- C. Stays the same
- D. Has no bearing

Answer: B

NEW QUESTION 601

- (Exam Topic 5)

Using the three-point estimating technique, if the most likely duration is four months, the optimistic duration is two months, and the pessimistic duration is one year, how many months is the expected activity duration?

- A. Two
- B. Four
- C. Five
- D. Twelve

Answer: C

NEW QUESTION 604

- (Exam Topic 5)

The total of the planned value (PV) is also known as:

- A. work breakdown structure (WBS).
- B. schedule target.
- C. performance measurement baseline (PMB).
- D. earned value baseline.

Answer: C

NEW QUESTION 607

- (Exam Topic 5)

Which tool or technique can a project manager use to select in advance a team member who will be crucial to the task?

- A. Acquisition
- B. Negotiation
- C. Virtual team
- D. Pre-assignment

Answer: D

NEW QUESTION 609

- (Exam Topic 5)

Which of the following includes how requirements activities will be planned, tracked, and reported?

- A. Configuration management plan
- B. Scope baseline
- C. Requirements management plan
- D. Schedule baseline

Answer: C

NEW QUESTION 611

- (Exam Topic 5)

Which type of diagram includes groups of information and shows relationships between factors, causes, and objectives?

- A. Affinity
- B. Scatter
- C. Fishbone
- D. Matrix

Answer: D

NEW QUESTION 616

- (Exam Topic 5)

Which of the following is an input to Direct and Manage Project Execution?

- A. Performance reports
- B. Project charter
- C. Outputs from planning processes
- D. Enterprise environmental factors

Answer: D

NEW QUESTION 618

- (Exam Topic 5)

Which Control Scope input is compared to actual results to determine if corrective action is required for the project?

- A. Scope baseline
- B. Scope management plan
- C. Change management plan
- D. Cost baseline

Answer: A

NEW QUESTION 619

- (Exam Topic 5)

Which input will be used when tasked with developing the human resource plan?

- A. Project management plan
- B. Activity resource requirements
- C. Resource calendar
- D. Project staff assignments

Answer: B

NEW QUESTION 623

- (Exam Topic 5)

Which of the following is an output of the Conduct Procurements process?

- A. Project statement of work
- B. Selected sellers
- C. Risk register updates
- D. Teaming agreements

Answer: B

NEW QUESTION 626

- (Exam Topic 5)

The risk shared between the buyer and seller is determined by the:

- A. assumption log.
- B. quality checklist.
- C. risk register.
- D. contract type.

Answer: D

NEW QUESTION 627

- (Exam Topic 5)

Expected monetary value (EMV) is computed by which equation?

- A. Value of each possible outcome multiplied by probability of occurrence
- B. Value of each possible outcome multiplied by probability of non-occurrence
- C. Multiplying the value of each possible outcome by the probability of occurrence and adding the products together
- D. Multiplying the value of each possible outcome by the probability of non-occurrence and adding the products together

Answer: C

NEW QUESTION 630

- (Exam Topic 5)

Prototype development may be used as a tool for which of the following risk response strategies?

- A. Avoid
- B. Accept
- C. Mitigate
- D. Exploit

Answer: C

NEW QUESTION 633

- (Exam Topic 5)

Which of the following is an output of Close Procurements?

- A. Accepted deliverables
- B. Organizational process assets updates
- C. Managing stakeholder expectations
- D. Performance reports

Answer: B

NEW QUESTION 634

- (Exam Topic 5)

At the end of the project, what will be the value of SV?

- A. Positive
- B. Zero
- C. Negative
- D. Greater than one

Answer: B

NEW QUESTION 637

- (Exam Topic 5)

When a permitting agency takes longer than planned to issue a permit, this can be described as a risk:

- A. event.
- B. response,
- C. perception.
- D. impact.

Answer: A

NEW QUESTION 638

- (Exam Topic 5)

Which characteristics do effective project managers possess?

- A. Project management knowledge, performance skills, and personal effectiveness
- B. Preparedness, project management knowledge, and personality characteristics
- C. General management, preparedness, and project management knowledge
- D. Assertiveness, collaboration, and performance skills

Answer: A

NEW QUESTION 640

- (Exam Topic 5)

Under which type of contract does the seller receive reimbursement for all allowable costs for performing contract work, as well as a fixed-fee payment calculated as a percentage of the initial estimated project costs?

- A. Cost Plus Fixed Fee Contract (CPFF)
- B. Cost Plus Incentive Fee Contract (CPIF)
- C. Firm Fixed Price Contract (FFP)
- D. Fixed Price with Economic Price Adjustment Contract (FP-EPA)

Answer: A

NEW QUESTION 644

- (Exam Topic 5)

Which Process Group contains the processes performed to complete the work defined in the project management plan to satisfy the project specifications?

- A. Initiating
- B. Planning
- C. Executing
- D. Closing

Answer: C

NEW QUESTION 649

- (Exam Topic 5)

Inputs to the Plan Risk Management process include the:

- A. cost management plan.
- B. risk management plan,
- C. activity list,
- D. risk register.

Answer: A

NEW QUESTION 653

- (Exam Topic 5)

Which of the following is a statistical concept that calculates the average outcome when the future includes scenarios that may or may not happen?

- A. Sensitivity analysis
- B. Three-point estimate
- C. Modeling and simulation
- D. Expected monetary value analysis

Answer: D

NEW QUESTION 656

- (Exam Topic 5)

Which process is responsible for monitoring the status of the project and product scope and managing changes to the scope baseline?

- A. Variance Analysis
- B. Define Scope
- C. Verify Scope
- D. Control Scope

Answer: D

NEW QUESTION 658

- (Exam Topic 5)

Which of the following is a strategy to deal with positive risks or opportunities?

- A. Mitigate
- B. Transfer
- C. Exploit
- D. Avoid

Answer: C

NEW QUESTION 663

- (Exam Topic 5)

At which stage of team development do members begin to work together, adjust work habits, and trust each other?

- A. Forming
- B. Storming
- C. Norming
- D. Performing

Answer: C

NEW QUESTION 665

- (Exam Topic 5)

The project management processes are usually presented as discrete processes with defined interfaces, while in practice they:

- A. operate separately.
- B. move together in batches,
- C. overlap and interact.
- D. move in a sequence.

Answer: C

NEW QUESTION 666

- (Exam Topic 5)

Projects are separated into phases or subprojects; these phases include:

- A. feasibility study, concept development, design, and prototype.
- B. initiate, plan, execute, and monitor.
- C. Develop Charter, Define Activities, Manage Stakeholder Expectations, and Report Performance.
- D. Identify Stakeholders, develop concept, build, and test.

Answer: A

NEW QUESTION 669

- (Exam Topic 5)

Who determines which dependencies are mandatory during the Sequence Activities process?

- A. Project manager
- B. External stakeholders
- C. Internal stakeholders
- D. Project team

Answer: D

NEW QUESTION 670

- (Exam Topic 5)

The item that provides more detailed descriptions of the components in the work breakdown structure (WBS) is called a WBS:

- A. dictionary.
- B. chart.
- C. report.
- D. register.

Answer: A

NEW QUESTION 674

- (Exam Topic 5)

A project manager has created an issue log to document issues communicated by project team members during weekly team meetings. This is an input of:

- A. Manage Stakeholder Expectations.
- B. Monitor and Control Risks.
- C. Plan Risk Management.
- D. Report Performance.

Answer: A

NEW QUESTION 676

- (Exam Topic 5)

The cost benefit analysis tool is used for creating:

- A. Pareto charts.
- B. quality metrics.
- C. change requests,

D. Ishikawa diagrams.

Answer: B

NEW QUESTION 681

- (Exam Topic 5)

The application of knowledge, skills, tools, and techniques to project activities to meet project requirements describes management of which of the following?

- A. Project
- B. Scope
- C. Contract
- D. Program

Answer: A

NEW QUESTION 682

- (Exam Topic 5)

The group technique that enhances brainstorming with a voting process used to rank the most useful ideas for prioritization is called the:

- A. majority rule technique.
- B. nominal group technique.
- C. Delphi technique,
- D. idea/mind mapping technique.

Answer: B

NEW QUESTION 686

- (Exam Topic 5)

The project has a current cost performance index of 0.80. Assuming this performance will continue, the new estimate at completion is \$1000. What was the original budget at completion for the project?

- A. \$800
- B. \$1000
- C. \$1250
- D. \$1800

Answer: A

NEW QUESTION 688

- (Exam Topic 5)

Which type of contract is a hybrid of both a cost-reimbursable and a fixed-price contract?

- A. Cost Plus Award Fee Contract (CPAF)
- B. Firm-Fixed -Price Contract (FFP)
- C. Time and Material Contract (T&M)
- D. Cost Plus Incentive Fee Contract (CPIF)

Answer: C

NEW QUESTION 690

- (Exam Topic 5)

The probability and impact matrix is primarily used to:

- A. Quantify risk issues for trends during a quality audit.
- B. Develop a risk register for risk planning.
- C. Evaluate each risk's importance and priority during Perform Qualitative Risk Analysis.
- D. Define risk and compare impacts during Perform Quantitative Risk Analysis.

Answer: C

NEW QUESTION 691

- (Exam Topic 5)

A tool and technique used during the Define Scope process is:

- A. facilitated workshops.
- B. observations.
- C. questionnaires and surveys.
- D. group creativity techniques.

Answer: A

NEW QUESTION 694

- (Exam Topic 5)

Which of the following is a project constraint?

- A. Twenty-five percent staff turnover is expected.
- B. The technology to be used is cutting-edge.
- C. Project leadership may change due to volatile political environment.
- D. The product is needed in 250 days.

Answer: D

NEW QUESTION 699

- (Exam Topic 5)

While preparing the project management plan on a weekly basis, the project manager indicates the intention to provide an issues report to the staff via e-mail. In which part of the plan will this type of information be included?

- A. Communications management plan
- B. Human resource plan
- C. Quality management plan
- D. Procurement management plan

Answer: A

NEW QUESTION 701

- (Exam Topic 5)

Which statement is true about the project management body of knowledge?

- A. Recognized by every project manager
- B. Constantly evolving
- C. The sum of all knowledge related to project management
- D. A sum of knowledge that should be applied on every project

Answer: B

NEW QUESTION 702

- (Exam Topic 5)

Requirements documentation, requirements management plan, and requirements traceability matrix are all outputs of which process?

- A. Control Scope
- B. Collect Requirements
- C. Create WBS
- D. Define Scope

Answer: B

NEW QUESTION 705

- (Exam Topic 5)

Which of the following is a tool or technique used in the Acquire Project Team process?

- A. Networking
- B. Training
- C. Negotiation
- D. Issue log

Answer: C

NEW QUESTION 706

- (Exam Topic 5)

Which is one of the determining factors used to calculate CPI?

- A. EV
- B. SPI
- C. PV
- D. ETC

Answer: A

NEW QUESTION 708

- (Exam Topic 5)

The initial development of a Project Scope Management plan uses which technique?

- A. Alternatives identification
- B. Scope decomposition
- C. Expert judgment
- D. Product analysis

Answer: C

NEW QUESTION 712

- (Exam Topic 5)

When cost variance is negative and schedule variance is positive, the project is:

- A. under budget and behind schedule.
- B. over budget and ahead of schedule.
- C. on schedule.
- D. complete; all planned values have been earned.

Answer: B

NEW QUESTION 717

- (Exam Topic 5)

Resource calendars are included in the:

- A. staffing management plan.
- B. work breakdown structure (WBS).
- C. project communications plan.
- D. project charter.

Answer: A

NEW QUESTION 720

- (Exam Topic 5)

The project budget is set at \$150,000. The project duration is planned to be one year. At the completion of Week 16 of the project, the following information is collected: Actual cost = \$50,000, Plan cost = \$45,000, Earned value = \$40,000. What is the cost performance index?

- A. 0.8
- B. 0.89
- C. 1.13
- D. 1.25

Answer: A

NEW QUESTION 723

- (Exam Topic 5)

Which quality control technique illustrates the 80/20 principle?

- A. Ishikawa diagram
- B. Control chart
- C. Run chart
- D. Pareto chart

Answer: D

NEW QUESTION 724

- (Exam Topic 5)

An input to the Collect Requirements process is the:

- A. stakeholder register.
- B. project management plan.
- C. project scope statement.
- D. requirements management plan.

Answer: A

NEW QUESTION 727

- (Exam Topic 5)

The three processes of Project Cost Management are:

- A. Estimate Costs, Control Schedule, and Control Costs.
- B. Estimate Costs, Determine Budget, and Estimate Activity Resources.
- C. Determine Budget, Control Schedule, and Estimate Activity Resources.
- D. Estimate Costs, Determine Budget, and Control Costs.

Answer: D

NEW QUESTION 731

- (Exam Topic 5)

In which type of contract are the performance targets established at the onset and the final contract price determined after completion of all work based on the sellers performance?

- A. Firm-Fixed-Price (FFP)
- B. Fixed Price with Economic Price Adjustments (FP-EPA)
- C. Fixed-Price-Incentive-Fee (FPIF)
- D. Cost Plus Fixed Fee (CPFF)

Answer: C

NEW QUESTION 736

- (Exam Topic 4)

Which of the following correctly explains the term "progressive elaboration"?

- A. Changing project specifications continuously
- B. Elaborate tracking of the project progress
- C. Elaborate tracking of the project specifications with a change control system
- D. Project specifications becoming more explicit and detailed as the project progresses

Answer: D

NEW QUESTION 739

- (Exam Topic 4)

What causes replanning of the project scope?

- A. Project document updates
- B. Project scope statement changes
- C. Variance analysis
- D. Change requests

Answer: D

NEW QUESTION 740

- (Exam Topic 4)

A given schedule activity is most likely to last four weeks. In a best-case scenario, the schedule activity is estimated to last two weeks. In a worst-case scenario, the schedule activity is estimated to last 12 weeks. Given these three estimates, what is the expected duration of the activity?

- A. Three weeks
- B. Four weeks
- C. Five weeks
- D. Six weeks

Answer: C

NEW QUESTION 745

- (Exam Topic 4)

What is the schedule performance index (SPI) using the following data? BAC = \$100,000 PV = \$50,000 AC = \$80,000 EV = \$40,000

- A. 1
- B. 0.4
- C. 0.5
- D. 0.8

Answer: D

NEW QUESTION 747

- (Exam Topic 4)

What risk technique is used to quantify the probability and impact of risks on project objectives?

- A. Expert judgment
- B. Risk registry
- C. Risk response planning
- D. Interviewing

Answer: D

NEW QUESTION 748

- (Exam Topic 4)

When sequencing activities, what does the common acronym FF stand for?

- A. Fixed Fee
- B. Free Float
- C. Fixed Finish
- D. Finish-to-Finish

Answer: D

NEW QUESTION 753

- (Exam Topic 4)

Which of the following is a conflict resolution technique that emphasizes areas of agreement rather than areas of difference?

- A. Compromising
- B. Collaborating
- C. Smoothing
- D. Problem Solving

Answer: C

NEW QUESTION 754

- (Exam Topic 4)

Which of the following is a set of interrelated actions and activities performed to achieve a prespecified product, result, or service?

- A. Portfolio
- B. Process
- C. Project
- D. Program

Answer: B

NEW QUESTION 756

- (Exam Topic 4)

In which process might a project manager use risk reassessment as a tool and technique?

- A. Perform Qualitative Risk Analysis
- B. Monitor and Control Risk
- C. Monitor and Control Project Work
- D. Plan Risk Responses

Answer: B

NEW QUESTION 759

- (Exam Topic 4)

Which written document helps monitor who is responsible for resolving specific problems and concerns by a target date?

- A. Project Plan
- B. Responsibility Matrix
- C. Issue Log
- D. Scope Document

Answer: C

NEW QUESTION 760

- (Exam Topic 4)

Which piece of information is part of the WBS Dictionary?

- A. Responsible organization
- B. Change requests
- C. Validated deliverables
- D. Organizational process assets

Answer: A

NEW QUESTION 761

- (Exam Topic 4)

How is the schedule variance calculated using the earned value technique?

- A. EV less AC
- B. AC less PV
- C. EV less PV
- D. AC less EV

Answer: C

NEW QUESTION 762

- (Exam Topic 4)

Which type of management focuses on ensuring that projects and programs are reviewed to prioritize resource allocation?

- A. Project
- B. Functional
- C. Program
- D. Portfolio

Answer: D

NEW QUESTION 767

- (Exam Topic 4)

In the Develop Project Team process, which of the following is identified as a critical factor for a project's success?

- A. Team meetings
- B. Subcontracting teams
- C. Virtual teams

D. Teamwork

Answer: D

NEW QUESTION 768

- (Exam Topic 4)

Which category of contracts are sellers legally obligated to complete, with possible financial damages if the project objectives are not met?

- A. Cost-reimbursable contracts
- B. Time and Material contracts (T&M)
- C. Fixed-price contracts
- D. Cost Plus Fixed Fee Contracts (CPFF)

Answer: C

NEW QUESTION 773

- (Exam Topic 4)

A weighting system is a tool for which area of Conduct Procurements?

- A. Plan contracting
- B. Requesting seller responses
- C. Selecting seller's
- D. Planning purchase and acquisition

Answer: C

NEW QUESTION 775

- (Exam Topic 4)

Which of the following Project Communication Management processes uses performance reports as an input?

- A. Manage Stakeholder Expectations
- B. Report Performance
- C. Distribute Information
- D. Plan Communications

Answer: C

NEW QUESTION 776

- (Exam Topic 4)

Which of the following strategies is used to deal with risks that may have a negative impact on project objectives?

- A. Exploit
- B. Share
- C. Enhance
- D. Transfer

Answer: D

NEW QUESTION 779

- (Exam Topic 4)

What provides information regarding the ways people, teams, and organizational units behave?

- A. Organizational chart
- B. Organizational theory
- C. Organizational structure
- D. Organizational behavior

Answer: B

NEW QUESTION 781

- (Exam Topic 4)

Which of the following documents allows the project manager to assess risks that may require near term action?

- A. Probability and impact matrix
- B. Contingency analysis report
- C. Risk urgency assessment
- D. Rolling wave plan

Answer: C

NEW QUESTION 784

- (Exam Topic 4)

Which degree of authority does a project manager have on a project in a strong matrix organizational structure?

- A. Limited
- B. Low to moderate
- C. Moderate to high
- D. High to almost total

Answer: C

NEW QUESTION 788

- (Exam Topic 4)

Which of the following is an input to the Direct and Manage Project Execution process?

- A. Approved change requests
- B. Approved contract documentation
- C. Work performance information
- D. Rejected change requests

Answer: A

NEW QUESTION 789

- (Exam Topic 4)

Which Perform Quality Control tool graphically represents how various elements of a system interrelate?

- A. Control chart
- B. Flowchart
- C. Run chart
- D. Pareto chart

Answer: B

NEW QUESTION 794

- (Exam Topic 4)

Which of the following tools and techniques is used in the Verify Scope process?

- A. Inspection
- B. Variance analysis
- C. Expert judgment
- D. Decomposition

Answer: A

NEW QUESTION 796

- (Exam Topic 4)

In Project Cost Management, which input is exclusive to the Determine Budget process?

- A. Scope baseline
- B. Organizational process assets
- C. Project schedule
- D. Resource calendars

Answer: D

NEW QUESTION 800

- (Exam Topic 4)

Change requests, project management plan updates, project document updates, and organizational process assets updates are all outputs of which project management process?

- A. Plan Risk Responses
- B. Manage Stakeholder Expectations
- C. Define Scope
- D. Report Performance

Answer: B

NEW QUESTION 805

- (Exam Topic 4)

Which provides the basic framework for managing a project?

- A. Project life cycle
- B. Work breakdown structure (WBS)
- C. Enterprise environmental factors
- D. Project initiation

Answer: A

NEW QUESTION 807

- (Exam Topic 4)

During which process would stakeholders provide formal acceptance of the completed project scope?

- A. Perform Quality Control
- B. Verify Scope
- C. Control Scope
- D. Develop Schedule

Answer: B

NEW QUESTION 808

- (Exam Topic 4)

When large or complex projects are separated into distinct phases or subprojects, all of the Process Groups would normally be:

- A. divided among each of the phases or subprojects.
- B. repeated for each of the phases or subprojects.
- C. linked to specific phases or subprojects.
- D. integrated for specific phases or subprojects.

Answer: B

NEW QUESTION 809

- (Exam Topic 4)

Which of the following is an input to Develop Human Resource Plan?

- A. Team performance assessment
- B. Roles and responsibilities
- C. Staffing management plan
- D. Enterprise environmental factors

Answer: D

NEW QUESTION 811

- (Exam Topic 4)

The key benefit of the Monitoring and Controlling Process Group is the ability to:

- A. establish and manage project communication channels, both external and internal to the project team.
- B. influence the stakeholders that want to circumvent integrated change control so that their changes are implemented.
- C. monitor the ongoing project team against the team performance assessments and the project performance baseline.
- D. observe and measure project performance regularly and consistently to identify variances from the project management plan.

Answer: D

NEW QUESTION 813

- (Exam Topic 4)

Lessons learned documentation is gathered during which of the following Project Management Process Groups?

- A. Planning
- B. Executing
- C. Closing
- D. Initiating

Answer: C

NEW QUESTION 818

- (Exam Topic 4)

The definition of operations is a/an:

- A. organizational function performing the temporary execution of activities that produce the same product or provide repetitive service.
- B. temporary endeavor undertaken to create a unique product, service, or result.
- C. organization that provides oversight for an administrative area.
- D. organizational function performing the ongoing execution of activities that produce the same product or provide repetitive service.

Answer: D

NEW QUESTION 822

- (Exam Topic 4)

Which of the following outputs from the Control Schedule process aids in the communication of schedule variance (SV), schedule performance index (SPI), or any performance status to stakeholders?

- A. Performance organizations
- B. Schedule baselines
- C. Work performance measurements
- D. Change requests

Answer: C

NEW QUESTION 825

- (Exam Topic 4)

Which of the following terms indicates a deliverable-oriented hierarchical decomposition of the project work?

- A. WBS directory
- B. Activity list
- C. WBS
- D. Project schedule

Answer: C

NEW QUESTION 827

- (Exam Topic 4)

Based on the following metrics: EV= \$20,000, AC= \$22,000, and PV= \$28,000, what is the project CV?

- A. -8000
- B. -2000
- C. 2000
- D. 8000

Answer: B

NEW QUESTION 828

- (Exam Topic 4)

Which process occurs within the Monitoring and Controlling Process Group?

- A. Control Costs
- B. Plan Quality
- C. Perform Quantitative Risk Analysis
- D. Determine Budget

Answer: A

NEW QUESTION 833

- (Exam Topic 4)

Prioritizing risks for further analysis or action by assessing and combining their probability of occurrence and impact takes place in which process?

- A. Monitor and Control Risks
- B. Plan Risk Management
- C. Perform Qualitative Risk Analysis
- D. Perform Quantitative Risk Analysis

Answer: C

NEW QUESTION 836

- (Exam Topic 4)

Which is the correct formula for calculating expected activity cost for three-point estimating?

- A. $C_e = (C_0 + 6C_m + C_p)/4$
- B. $C_e = (6C_0 + C_m + C_p)/4$
- C. $C_e = (C_0 + 4C_m + C_p)/6$
- D. $C_e = (C_0 + C_m + 4C_p) / 6$

Answer: C

NEW QUESTION 839

- (Exam Topic 4)

Which tool and technique is used in Conduct Procurements?

- A. Teaming agreements
- B. Expert judgment
- C. Bidder conferences
- D. Contract types

Answer: C

NEW QUESTION 843

- (Exam Topic 4)

The project manager at an organization has just realized that some of the engineering staff has been allocated to project Y and will not be available to finish task X. The project manager has also discovered that at the current pace, it will not be possible to complete the project on time. Due to cost constraints, hiring more work force is not a viable option. Which tools are at the manager's disposal?

- A. Resource leveling and fast tracking
- B. Fast tracking and crashing
- C. Crashing and applying leads and lags
- D. Scheduling tools and applying leads and lags

Answer: A

NEW QUESTION 847

- (Exam Topic 4)

Which type of estimating is used to improve the accuracy of an activity's duration?

- A. Analogous
- B. Parametric
- C. Three-point
- D. What-if scenario analysis

Answer: C

NEW QUESTION 848

- (Exam Topic 4)

Which of the following is an information gathering technique in Identify Risks?

- A. Influence diagrams
- B. Brainstorming
- C. Assumption analysis
- D. SWOT analysis

Answer: B

NEW QUESTION 853

- (Exam Topic 4)

Which of the following is developed from the project scope baseline and defines only that portion of the project scope that is to be included within a related contract?

- A. Product scope description
- B. Procurement statement of work
- C. Project schedule
- D. Work breakdown structure (WBS)

Answer: B

NEW QUESTION 855

- (Exam Topic 4)

What is the responsibility of the project manager and the functional manager respectively?

- A. Oversight for an administrative area; a facet of the core business
- B. Achieving the project objectives; providing management oversight for an administrative area
- C. A facet of the core business; achieving the project objectives
- D. Both are responsible for achieving the project objectives.

Answer: B

NEW QUESTION 857

- (Exam Topic 4)

Tools and techniques used for Plan Communications include the communication:

- A. requirements analysis, communication technology, communication models, and communication methods.
- B. methods, stakeholder register, communication technology, and communication models.
- C. requirements, communication technology, communication requirements analysis, and communication methods.
- D. management plan, communication technology, communication models, and communication requirements analysis.

Answer: A

NEW QUESTION 859

- (Exam Topic 4)

Which of the following is a tool or technique of the Define Activities process?

- A. Rolling wave planning
- B. Precedence diagramming method (PDM)
- C. Alternatives analysis
- D. Parametric estimating

Answer: A

NEW QUESTION 862

- (Exam Topic 4)

Which of the following types of a dependency determination is used to define the sequence of activities?

- A. Legal
- B. Discretionary

- C. Internal
- D. Resource

Answer: B

NEW QUESTION 865

- (Exam Topic 4)

The PV is \$1000, EV is \$2000, and AC is \$1500. What is CPI?

- A. 1.33
- B. 2
- C. 0.75
- D. 0.5

Answer: A

NEW QUESTION 867

- (Exam Topic 4)

A purchase order for a specified item to be delivered by a specified date for a specified price is the simplest form of what type of contract?

- A. Cost-reimbursable
- B. Time and material
- C. Fixed price or lump-sum
- D. Cost-plus-fixed-fee

Answer: C

NEW QUESTION 872

- (Exam Topic 4)

Which is a communication method used in the Report Performance process?

- A. Expert judgment
- B. Project management methodology
- C. Stakeholder analysis
- D. Status review meetings

Answer: D

NEW QUESTION 877

- (Exam Topic 4)

Which technique helps to determine the risks that have the most potential impact on a project?

- A. Cost risk simulation analysis
- B. Expected monetary value analysis
- C. Modeling and simulation
- D. Sensitivity analysis

Answer: D

NEW QUESTION 881

- (Exam Topic 4)

Which of the following is an example of the simplest fixed-price contract?

- A. Purchase requisition
- B. Purchase order
- C. Verbal agreement
- D. Request for quote

Answer: B

NEW QUESTION 884

- (Exam Topic 4)

Which of the following reduces the probability of potential consequences of project risk events?

- A. Preventive action
- B. Risk management
- C. Corrective action
- D. Defect repair

Answer: A

NEW QUESTION 889

- (Exam Topic 4)

Which Process Group contains those processes performed to define a new project?

- A. Initiating
- B. Planning
- C. Executing
- D. Closing

Answer: A

NEW QUESTION 892

- (Exam Topic 4)

What is a deliverable-oriented, hierarchical decomposition of the work to be executed to accomplish the project objectives and create the required deliverables?

- A. Organizational breakdown structure (OBS)
- B. Work performance information
- C. Work package
- D. Work breakdown structure (WBS)

Answer: D

NEW QUESTION 893

- (Exam Topic 4)

In which type of organizational structure are staff members grouped by specialty?

- A. Functional
- B. Projectized
- C. Matrix
- D. Balanced

Answer: A

NEW QUESTION 897

- (Exam Topic 4)

Which of the following statements is true regarding project and product lifecycles?

- A. A single product lifecycle may consist of multiple project lifecycles.
- B. A product lifecycle is always shorter than the project lifecycle.
- C. A single product lifecycle can only have one project lifecycle.
- D. A single project lifecycle may consist of multiple product lifecycles.

Answer: A

NEW QUESTION 902

- (Exam Topic 4)

Which of the following factors is lowest at the start of the project?

- A. Cost of changes
- B. Stakeholder influences
- C. Risk
- D. Uncertainty

Answer: A

NEW QUESTION 904

- (Exam Topic 4)

The process of monitoring the status of the project to update project progress and manage changes to the schedule baseline is:

- A. Control Schedule.
- B. Quality Control.
- C. Perform Integrated Change Control.
- D. Develop Schedule.

Answer: A

NEW QUESTION 905

- (Exam Topic 6)

A project manager is searching for solutions that bring some degree of satisfaction to all parties in order to temporarily resolve a conflict. What conflict management technique is described in this situation?

- A. Withdraw/avoid
- B. Smooth /accommodate
- C. Collaborate/problem solve
- D. Compromise/ reconcile

Answer: D

NEW QUESTION 906

- (Exam Topic 6)
Match the project manager's sphere of influence with the associated primary role.

Project Manager's Sphere of Influence		Project Manager's Primary Role
Professional discipline		Use informal and formal networks for communication among the sponsor, team, and stakeholders.
The industry		Advocate the project's value in interactions with other project managers to effectively gain the required resources and funding.
The project		Apply and transfer knowledge continuously to related professions.
The organization		Keep abreast of emerging technology developments and the changing market.

- A. Mastered
- B. Not Mastered

Answer: A

Explanation:

Project Manager's Sphere of Influence		Project Manager's Primary Role
Professional discipline	The project	Use informal and formal networks for communication among the sponsor, team, and stakeholders.
The industry	Professional discipline	Advocate the project's value in interactions with other project managers to effectively gain the required resources and funding.
The project	The industry	Apply and transfer knowledge continuously to related professions.
The organization	The organization	Keep abreast of emerging technology developments and the changing market.

NEW QUESTION 907

- (Exam Topic 6)
Which process is engaged when a project team member makes a change to project budget with the project manager's approval?

- A. Manage Cost Plan
- B. Estimate Costs
- C. Determine Budget
- D. Control Costs

Answer: A

NEW QUESTION 911

- (Exam Topic 6)
A project manager is working in an environment where requirements are not very clear and may change during the project. In addition, the project has several stakeholders and is technically complex.
Which strategies should the project manager take into account for risk management in this environment?

- A. Occasionally identify, evaluate, and classify risks.
- B. Review requirements and cross-functional project teams.
- C. Include contingency reserves and update the project management plan frequently.

D. Frequently review incremental work products and update the requirements for proper prioritization.

Answer: D

NEW QUESTION 916

- (Exam Topic 6)

Which are the main objectives of Project Risk Management?

- A. Increase the probability of positive risks and decrease the probability of negative risks
- B. Avoid all kind of risks
- C. Increase the probability of positive risks and eliminate all negative risks
- D. Identify positive and negative risks

Answer: A

NEW QUESTION 917

- (Exam Topic 6)

Which of the following is used as an input to prepare a cost management plan?

- A. Expert judgment
- B. Lessons learned
- C. Cost estimates
- D. Project management plan

Answer: D

NEW QUESTION 918

- (Exam Topic 6)

Stakeholder identification and engagement should begin during what phase of the project?

- A. After the project management plan is completed
- B. After the stakeholder engagement plan is completed
- C. As soon as the project charter has been approved
- D. After the communications management plan is completed

Answer: A

NEW QUESTION 922

- (Exam Topic 6)

Which of the following is a category of organizational process assets?

- A. Government standards
- B. Organizational culture
- C. Employee capabilities
- D. Organizational knowledge bases

Answer: D

NEW QUESTION 926

- (Exam Topic 6)

The project management plan requires the acquisition of a special part available from a supplier located abroad. Which source selection method is being used?

- A. Least cost
- B. Qualifications only
- C. Sole source
- D. Fixed budget

Answer: B

NEW QUESTION 929

- (Exam Topic 6)

Responsible, accountable, consult and inform (RACI) is an example of which of the following?

- A. Text-oriented formal
- B. Resource management plan
- C. Organization chart
- D. Responsibility assignment matrix (RAM)

Answer: D

NEW QUESTION 932

- (Exam Topic 6)

Once the make-or-buy analysis is completed, which document defines the project delivery method?

- A. Procurement statement of work (SOW)

- B. Procurement strategy
- C. Terms of reference
- D. Change request

Answer: B

NEW QUESTION 936

- (Exam Topic 6)

Which project manager competency is displayed through the knowledge, skills, and behaviors related to specific domains of project, program, and portfolio management?

- A. Leadership management
- B. Technical project management
- C. Strategic management
- D. Business management

Answer: B

NEW QUESTION 941

- (Exam Topic 6)

Which of the following best correspond to the organizational process assets (OPAs) that affect the project?

- A. Policies and lessons learned from other projects
- B. Information technology software and employee capability
- C. Resource availability and employee capability
- D. Marketplace conditions and legal restrictions

Answer: A

NEW QUESTION 943

- (Exam Topic 6)

With regard to a project manager's sphere of influence in a project, which of the following does the project manager influence most directly?

- A. Suppliers
- B. Customers
- C. Governing bodies
- D. Project team

Answer: D

NEW QUESTION 946

- (Exam Topic 6)

Company A has just been notified about a new legal requirement for its business operations. What is the classification of this item?

- A. Internal enterprise environmental factor
- B. Risk register database
- C. External enterprise environmental factor
- D. Organizational process asset

Answer: C

NEW QUESTION 950

- (Exam Topic 6)

A project manager is launching an information system to provide a lessons learned database. This action is necessary for recipients to access content at their own discretion. Which communication method is described?

- A. Push communication
- B. Pull communication
- C. Interactive communication
- D. Stakeholder communication

Answer: B

NEW QUESTION 953

- (Exam Topic 6)

In an adaptive or agile life cycle, how are the customer and sponsor involved in the project scope management activities?

- A. Involvement is needed only during project initiation.
- B. Minimal involvement of stakeholders is sufficient.
- C. They should be continuously engaged.
- D. They should be involved only during phase or deliverable reviews.

Answer: C

NEW QUESTION 954

- (Exam Topic 6)

In which Project Cost Management process is work performance data included?

- A. Plan Cost Management
- B. Estimate Costs
- C. Determine Budget
- D. Control Costs

Answer: D

NEW QUESTION 959

- (Exam Topic 6)

During the planning phase, a project manager must create a work breakdown structure (WBS) to improve management of the project's components. What should be included in the WBS?

- A. Activity dependencies
- B. Work package risks
- C. Description of work
- D. Resource estimates

Answer: C

NEW QUESTION 963

- (Exam Topic 6)

A project manager is in the process of working with stakeholders to meet their needs and expectations, and identifying and fostering communication and involvement. Which process does this typically represent?

- A. Monitor Stakeholder Engagement
- B. Monitor Communications
- C. Manage Communications
- D. Manage Stakeholder Engagement

Answer: D

NEW QUESTION 967

- (Exam Topic 6)

What is the discipline that focuses on the interdependences between projects to determine the optimal approach for managing them?

- A. Project Management
- B. Program Management
- C. Portfolio Management
- D. Operations Management

Answer: A

NEW QUESTION 969

- (Exam Topic 6)

A functional manager is delegating a key project to a project team without a project manager. Which communication method will be most effective?

- A. Interactive
- B. Push
- C. Verbal
- D. Oral

Answer: A

NEW QUESTION 970

- (Exam Topic 6)

A project manager is analyzing a few network diagrams in order to determine the minimum duration of a project. Which diagram should the project manager reference?

- A. A diagram in which resource optimization has been applied.
- B. A diagram in which the critical path method has been applied.
- C. A diagram in which a predefined series of activities has been organized.
- D. A diagram which shows a combination of resource and time optimization.

Answer: B

NEW QUESTION 974

- (Exam Topic 6)

Which of the following tasks focuses on decomposing work packages?

- A. Adjust duration estimates
- B. Define activities
- C. Complete rolling wave planning
- D. Develop milestone list

Answer: C

NEW QUESTION 979

- (Exam Topic 6)

What type of meeting is held to discuss prioritized product backlog items?

- A. Status
- B. Daily standup
- C. Iteration planning
- D. Release planning

Answer: C

NEW QUESTION 984

- (Exam Topic 6)

What important leadership quality/qualities should project managers possess?

- A. Skills and behaviors related to specific domains of project management
- B. Skills and behaviors needed to guide a team and help an organization reach its goals
- C. Industry expertise that helps to better deliver business outcomes
- D. Industry and organizational expertise that enhances performance

Answer: C

NEW QUESTION 985

- (Exam Topic 6)

What tool should a project manager use to efficiently manage project resources?

- A. List of project resources
- B. Resource breakdown structure
- C. Resources detailed in the project scope
- D. Resource requirements

Answer: C

NEW QUESTION 986

- (Exam Topic 6) Given the following information. Activity A takes one week.

Activity B takes three weeks. Activity C takes two weeks. Activity D takes five weeks.

Activity A starts at the same time as Activity B. Activity C follows Activity B and Activity A. Activity D follows Activity C.

How long will it take to complete the project?

- A. Eleven weeks
- B. Nine weeks
- C. Eight weeks
- D. Ten weeks

Answer: D

NEW QUESTION 989

- (Exam Topic 6)

How can a project manager evaluate project team development?

- A. Produce team performance assessments.
- B. Hold weekly meetings to engage every member
- C. Complete a personal skill assessment on each team member
- D. Provide recognition awards to team members

Answer: A

NEW QUESTION 994

- (Exam Topic 6)

Tailoring considerations for project scope management may include:

- A. requirements management, stability of requirements, development approach, and validation and control.
- B. WBS guidelines, requirements templates, deliverable acceptance forms, and verified deliverables.
- C. business needs, product descriptions, project restrictions, and project management plan.
- D. issues defining and controlling what is included in the project, vended deliverables, and quality reports.

Answer: A

NEW QUESTION 995

- (Exam Topic 6)

What is a tailoring consideration for the application of Project Risk Management processes?

- A. Project complexity

- B. Procurement criteria
- C. Communication technology
- D. Knowledge management

Answer: A

NEW QUESTION 996

- (Exam Topic 6)

Which is the best way for a project manager to ensure efficient and frequent communication with management and stakeholders in an agile/adaptive environment?

- A. Post project artifacts in a transparent fashion and engage stakeholders on a regular basis.
- B. Make surveys among the stakeholders and meet with the team once a month.
- C. Create a social network and post news there.
- D. Create personalized emails for each stakeholder, asking for requests and reviewing objectives with them periodically.

Answer: A

NEW QUESTION 999

- (Exam Topic 6)

What can increase the complexity of the Manage Stakeholder Engagement process?

- A. The project must be of high quality.
- B. The stakeholders are from different countries.
- C. The project must comply with strict local government regulations.
- D. The project has a tight budget and timeline.

Answer: B

NEW QUESTION 1003

- (Exam Topic 6)

Which role does the project manager resemble best?

- A. Orchestra conductor
- B. Facilities supervisor
- C. Functional manager
- D. School principal

Answer: A

NEW QUESTION 1006

- (Exam Topic 6)

What is the role of project management in terms of organizational strategy?

- A. Project management aligns initiatives, prioritizes work, and provides resources.
- B. Project management provides the strategic vision (or an organization to achieve its goals).
- C. Project management enables the achievement of organizational goals and objectives.
- D. Project management harmonizes components and controls interdependencies to realize specific benefits.

Answer: C

NEW QUESTION 1008

- (Exam Topic 6)

Which is a list of organizational systems that may have an impact on a project?

- A. Internal policies, company procedures, and organizational resources
- B. Company culture, purchasing system, and project management information system
- C. Organizational structure, governance framework, and management elements
- D. Organizational process assets, enterprise environmental factors, and corporate knowledge

Answer: D

NEW QUESTION 1010

- (Exam Topic 6)

Which tasks should a project manager perform in order to manage the project schedule effectively?

- A. Plan Schedule Management, Define Activities, Sequence Activities, Estimate Activity Durations, Define Quality of Activities
- B. Develop Schedule
- C. Plan Schedule Management
- D. Define Activities, Sequence Activities, Estimate Activity Durations, Develop Schedule
- E. Control Schedule
- F. Plan Schedule Management
- G. Define Activities, Sequence Activities, Estimate Activity Durations, Estimate Cost of Activities
- H. Develop Schedule
- I. Define Activities
- J. Sequence Activities, Estimate Activity Duration
- K. Define Quality of Activities, Estimate Cost of Activities, Develop Schedule

Answer: B

NEW QUESTION 1015

- (Exam Topic 6)

The procurement requirements for a project include working with several vendors. What should the project manager take into consideration during the Project Procurement Management processes?

- A. Work performance information
- B. Bidder conferences
- C. Complexity of procurement
- D. Procurement management plan

Answer: D

NEW QUESTION 1017

- (Exam Topic 6)

What communication methods would a project manager use for overall effective project communication?

- A. Interactive communication, push communication, interpersonal communication
- B. Interactive communication, push communication, pull communication
- C. Push communication, pull communication, interpersonal communication
- D. Pull communication, interactive communication, interpersonal communication

Answer: C

NEW QUESTION 1019

- (Exam Topic 6)

When project requirements are documented in user stories then prioritized and refined just prior to construction, which approach is being used for scheduling?

- A. Iterative scheduling with backlog
- B. On-demand scheduling
- C. Life cycle scheduling with backlog
- D. Defining Iterative activities

Answer: A

NEW QUESTION 1024

- (Exam Topic 6)

The project manager is creating the communications management plan. Which group of inputs is required to begin?

- A. Work performance reports, change requests, and risk register
- B. Work performance data, project documents, and stakeholder engagement plan
- C. Project charter, project management plan, and project documents
- D. Work performance data, stakeholder register, and team management plan

Answer: C

NEW QUESTION 1027

- (Exam Topic 6)

What tool or technique can improve a product's final characteristics?

- A. Design for X (DfX)
- B. Problem solving
- C. Process analysis
- D. Risk report

Answer: A

NEW QUESTION 1029

- (Exam Topic 6)

What is the difference between quality metrics and quality measurements?

- A. Quality metrics are product attributes and the measurement is the result of the Monitor and Control Project process
- B. Quality metrics are the result of the Monitor and Control Project process and the measurements are product attributes
- C. Quality metrics and measurements are the same concept
- D. Quality metrics is the general objective and the measurements are the specific objectives

Answer: A

NEW QUESTION 1031

- (Exam Topic 6)

What conflict resolution technique involves delaying the issue or letting others resolve it?

- A. Smooth/accommodate
- B. Collaborate/problem solve

- C. Withdraw/avoid
- D. Force/direct

Answer: C

NEW QUESTION 1035

- (Exam Topic 6)

Which is the order of steps in the Procurement Management process?

- A. Identifying and planning procurement requirements, obtaining quotes or proposals, negotiating with vendors, contracting with selected vendors, and controlling procurements
- B. Identifying and planning procurement requirements, negotiating with vendors, contracting with selected vendors, obtaining quotes or proposals, and controlling procurements
- C. Controlling procurements, identifying and planning procurement requirements, obtaining quotes or proposals, negotiating with vendors, and contracting with selected vendors
- D. Obtaining quotes or proposals, identifying and planning procurement requirements, negotiating with vendors, contracting with selected vendors, and controlling procurements

Answer: A

NEW QUESTION 1038

- (Exam Topic 6)

How can a project manager determine if the project activities comply with organizational and project policies, processes, and procedures?

- A. Look at the quality metrics.
- B. Validate the scope.
- C. Review the quality checklist.
- D. Conduct a quality audit.

Answer: D

NEW QUESTION 1039

- (Exam Topic 6)

If you are using an Ishikawa diagram to determine the root cause of problems, which process are you engaged in?

- A. Plan Quality Management
- B. Control Quality
- C. Risk Management
- D. Plan Scope Management

Answer: B

NEW QUESTION 1043

- (Exam Topic 6)

Which of the following are components of the technical project management skill?

- A. Ability to explain business aspects of the project, business strategy, goals and objectives, and business value.
- B. Ability to deal with people, to be collaborative, and to apply persuasion and negotiation.
- C. Ability to focus on relationships with people, inspire trust, and implement decisions and actions that support the business strategy.
- D. Ability to plan and prioritize, gather the right artifacts available for each project, and focus on critical success factors.

Answer: D

NEW QUESTION 1044

- (Exam Topic 6)

Which is an example of leveraging evolving trends and emerging practices in Project Integration Management?

- A. Hybrid methodologies
- B. Risk register updates
- C. Outsourced project resources
- D. Reliance on lessons learned documents

Answer: A

NEW QUESTION 1045

- (Exam Topic 6)

Under which circumstances should multiple projects be grouped in a program?

- A. When they are needed to accomplish a set of goals and objectives for an organization
- B. When they have the same project manager and the same organizational unit
- C. When they have the same scope, budget, and schedule
- D. When they are from the same unit of the organization

Answer: A

NEW QUESTION 1048

- (Exam Topic 6)

Which type of project life cycle uses an iteration plan?

- A. Agile
- B. Predictive
- C. Waterfall
- D. Product

Answer: A

NEW QUESTION 1053

- (Exam Topic 6)

A project using the agile/adaptive approach has reached the Project Integration Management phase. What is the project manager's key responsibility during this phase?

- A. Defining the scope of the project
- B. Building a collaborative environment
- C. Creating a detailed project management plan
- D. Directing the delivery of the project

Answer: B

Explanation:

PMBOK pg. 74 Considerations for Agile Adaptive Environments: PjM's focus is on building a collaborative decision-making environment and ensuring team has ability to respond to changes.

NEW QUESTION 1054

- (Exam Topic 6)

An important project stakeholder has low risk tolerance. Which type of communication should a project manager use to provide this stakeholder with a difficult update?

- A. Informal conversation
- B. Face-to-face meeting
- C. Short email update
- D. Written report

Answer: A

NEW QUESTION 1059

- (Exam Topic 6)

What purpose does the hierarchical locus of stakeholder communications serve?

- A. Maintains the focus on project and organizational stakeholders
- B. Preserves the focus on external stakeholders—such as customers and vendors—as well as on other projects
- C. Sustains the focus on general communication activities using email, social media, and websites
- D. Keeps the focus on the position of the stakeholder or group with respect to the project team

Answer: C

NEW QUESTION 1061

- (Exam Topic 6)

Project reporting is a tool that is most closely associated with which process?

- A. Communicate Plan
- B. Manage Communications
- C. Report Performance
- D. Control Communications

Answer: B

NEW QUESTION 1062

- (Exam Topic 6)

A project manager is determining the amount of contingency needed for a project. Which analysis is the project manager using?

- A. What-if scenario analysis
- B. Simulation
- C. Alternatives analysis
- D. Reserve analysis

Answer: D

NEW QUESTION 1064

- (Exam Topic 6)

A company must implement sales software because it is opening a new branch in a foreign market. Although this software is used in every domestic branch, multiple changes are expected during the implementation because it is a foreign location.

Which type of life cycle would the project manager use in this case?

- A. Predictive life cycle
- B. Waterfall life cycle
- C. Hybrid life cycle
- D. Product life cycle

Answer: C

NEW QUESTION 1067

- (Exam Topic 6)

A project reports an earned value (EV) of US\$45 for work completed with an actual cost (AC) of US\$40. What is the cost performance index (CPI)?

- A. 0.88
- B. 1.12
- C. 0.58
- D. 1.58

Answer: B

NEW QUESTION 1068

- (Exam Topic 6)

Why is tailoring required in a project?

- A. Because a one-size-fits-all approach avoids complications and saves time.
- B. Because every project is unique and not every tool, technique, input, or output identified in the PMBOK Guide is required.
- C. Because tailoring allows us to identify the techniques, procedures, and system practices used by those in the project.
- D. Project managers should apply every process in the PMBOK Guide to the project, so tailoring is not required.

Answer: C

NEW QUESTION 1069

- (Exam Topic 6)

Analyzing activity sequences, durations, resource requirements, and schedule constraints for project execution and monitoring and controlling relates to which process?

- A. Develop Schedule
- B. Control Schedule
- C. Estimate Activity Durations
- D. Define Activities

Answer: A

NEW QUESTION 1073

- (Exam Topic 6)

In a large organization, with projects of different types and sizes, what kind of approach or method would be best to use?

- A. Predictive
- B. Adaptive
- C. A mix
- D. Agile

Answer: C

NEW QUESTION 1075

- (Exam Topic 6)

At the beginning of an iteration, the team will work to determine how many of the highest-priority items on the backlog list can be delivered within the next iteration. Which of the following activities is done first?

- A. Create Work Breakdown Structure (WBS)
- B. Create Scope Baseline
- C. Collect Requirements
- D. Define Scope

Answer: D

NEW QUESTION 1079

.....

Thank You for Trying Our Product

We offer two products:

1st - We have Practice Tests Software with Actual Exam Questions

2nd - Questions and Answers in PDF Format

CAPM Practice Exam Features:

- * CAPM Questions and Answers Updated Frequently
- * CAPM Practice Questions Verified by Expert Senior Certified Staff
- * CAPM Most Realistic Questions that Guarantee you a Pass on Your First Try
- * CAPM Practice Test Questions in Multiple Choice Formats and Updates for 1 Year

100% Actual & Verified — Instant Download, Please Click
[Order The CAPM Practice Test Here](#)