



Cisco

Exam Questions 300-730

Implementing Secure Solutions with Virtual Private Networks (SVPN)

NEW QUESTION 1

A second set of traffic selectors is negotiated between two peers using IKEv2. Which IKEv2 packet will contain details of the exchange?

- A. IKEv2 IKE_SA_INIT
- B. IKEv2 INFORMATIONAL
- C. IKEv2 CREATE_CHILD_SA
- D. IKEv2 IKE_AUTH

Answer: B

NEW QUESTION 2

On a FlexVPN hub-and-spoke topology where spoke-to-spoke tunnels are not allowed, which command is needed for the hub to be able to terminate FlexVPN tunnels?

- A. interface virtual-access
- B. ip nhrp redirect
- C. interface tunnel
- D. interface virtual-template

Answer: D

NEW QUESTION 3

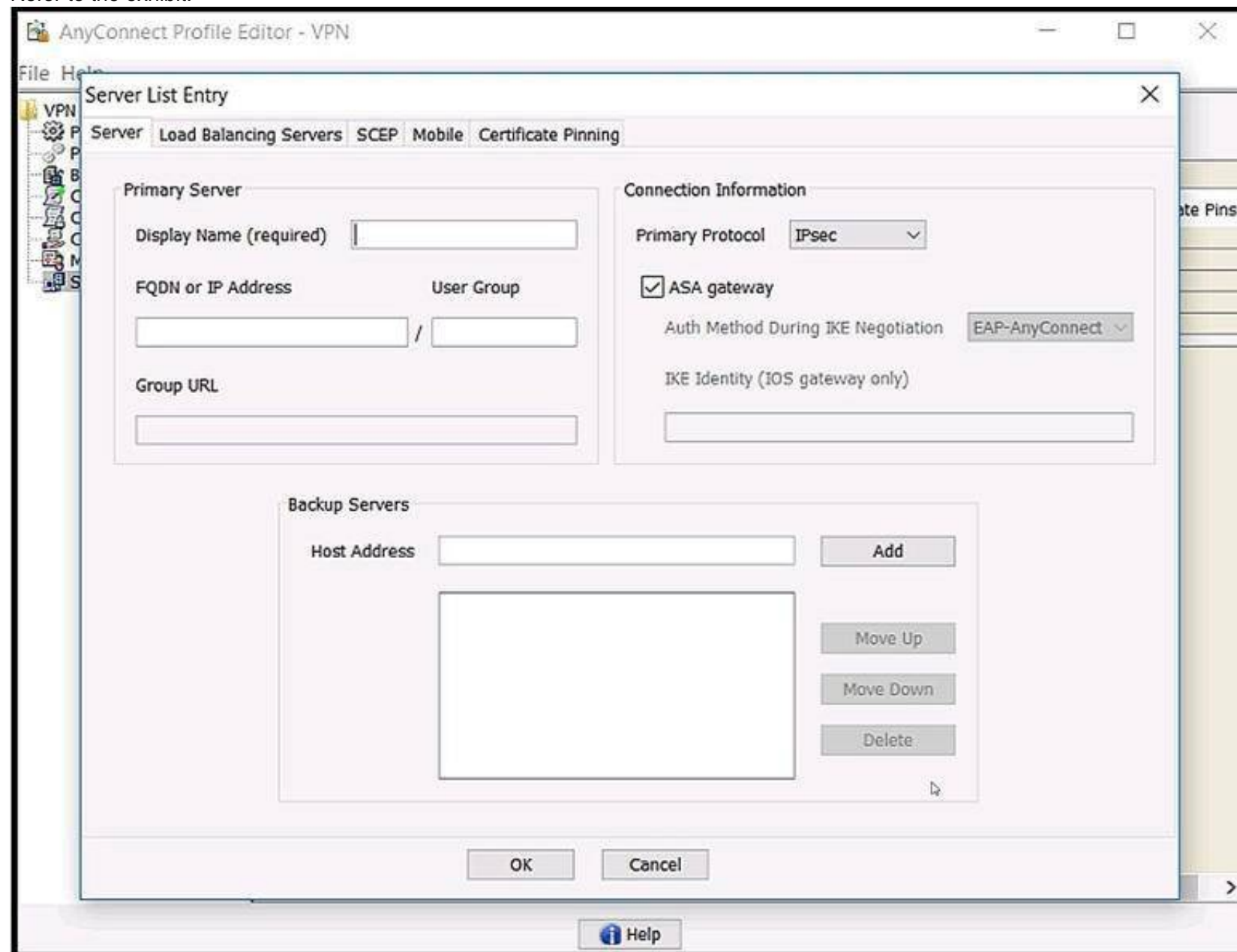
Which two parameters help to map a VPN session to a tunnel group without using the tunnel-group list? (Choose two.)

- A. group-alias
- B. certificate map
- C. optimal gateway selection
- D. group-url
- E. AnyConnect client version

Answer: BD

NEW QUESTION 4

Refer to the exhibit.



Which value must be configured in the User Group field when the Cisco AnyConnect Profile is created to connect to an ASA headend with IPsec as the primary protocol?

- A. address-pool
- B. group-alias
- C. group-policy
- D. tunnel-group

Answer: D

Explanation:

Reference: https://www.cisco.com/c/en/us/td/docs/security/vpn_client/anyconnect/anyconnect41/administration/guide/b_AnyConnect_Administrator_Guide_4-1/configure-vpn.html

NEW QUESTION 5

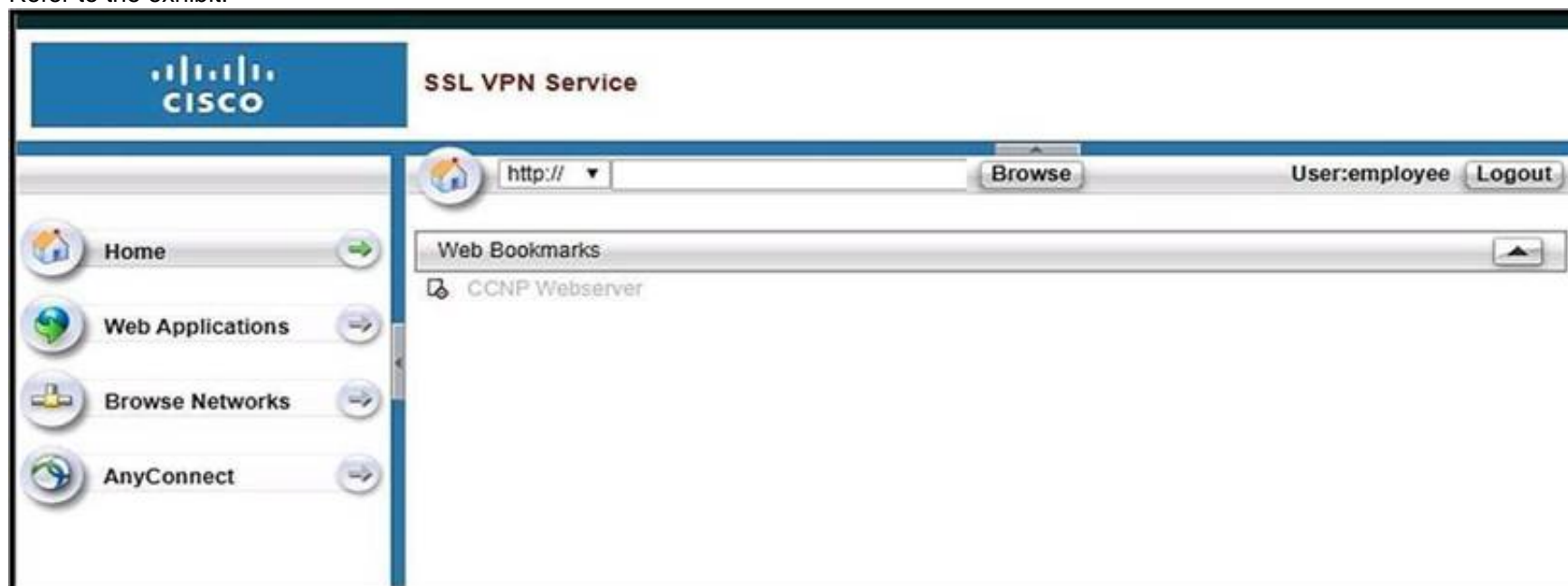
Which two features provide headend resiliency for Cisco AnyConnect clients? (Choose two.)

- A. AnyConnect Auto Reconnect
- B. AnyConnect Network Access Manager
- C. AnyConnect Backup Servers
- D. ASA failover
- E. AnyConnect Always On

Answer: CD

NEW QUESTION 6

Refer to the exhibit.



Based on the exhibit, why are users unable to access CCNP Webserver bookmark?

- A. The URL is being blocked by a WebACL.
- B. The ASA cannot resolve the URL.
- C. The bookmark has been disabled.
- D. The user cannot access the URL.

Answer: C

NEW QUESTION 7

Refer to the exhibit.

```
group-policy DfltGrpPolicy internal
group-policy DfltGrpPolicy attributes
  banner none
  dns-server value 10.10.10.10
  vpn-tunnel-protocol ssl-clientless
  default-domain value cisco.com
  address-pools value ACPool

group-policy Admin_Group internal
group-policy Admin_Group attributes
  vpn-simultaneous-logins 10
  vpn-tunnel-protocol ikev2 ssl-clientless
  split-tunnel-policy tunnelall

tunnel-group Admins type remote-access
tunnel-group Admins general-attributes
  default-group-policy Admin_Group
tunnel-group Admins webvpn-attributes
  group-alias Admins enable

tunnel-group Employee type remote-access
tunnel-group Employee webvpn-attributes
  group-alias Employee enable

webvpn
  enable outside
  anyconnect image disk0:/anyconnect-win-4.7.01076-webdeploy-k9.pkg 1
  anyconnect enable
  tunnel-group-list enable
```

Which VPN technology is allowed for users connecting to the Employee tunnel group?

- A. SSL AnyConnect
- B. IKEv2 AnyConnect
- C. crypto map
- D. clientless

Answer: B

NEW QUESTION 8

Which command is used to troubleshoot an IPv6 FlexVPN spoke-to-hub connectivity failure?

- A. show crypto ikev2 sa
- B. show crypto isakmp sa
- C. show crypto gkm
- D. show crypto identity

Answer: A

Explanation:

Reference: <https://www.cisco.com/c/en/us/support/docs/security/flexvpn/116413-configure-flexvpn-00.pdf>

NEW QUESTION 9

Refer to the exhibit.

```
*Jul 16 20:21:25.317: ISAKMP (1004): received packet from 192.168.0.2 dport
  500 sport 500 Global (R) MM_KEY_EXCH
*Jul 16 20:21:25.317: ISAKMP: reserved not zero on ID payload!
*Jul 16 20:21:25.317: %CRYPTO-4-IKMP_BAD_MESSAGE: IKE message from 192.168.0.2
  failed its sanity check or is malformed
```

Which type of mismatch is causing the problem with the IPsec VPN tunnel?

- A. crypto access list
- B. Phase 1 policy
- C. transform set
- D. preshared key

Answer: D

Explanation:

Reference: <https://www.cisco.com/c/en/us/support/docs/security-vpn/ipsec-negotiation-ike-protocols/5409-ipsec-debug-00.html#ike>

NEW QUESTION 10

Refer to the exhibit.

An SSL client is connecting to an ASA headend. The session fails with the message “Connection attempt has timed out. Please verify Internet connectivity.” Based on how the packet is processed, which phase is causing the failure?

- A. phase 9: rpf-check
- B. phase 5: NAT
- C. phase 4: ACCESS-LIST
- D. phase 3: UN-NAT

Answer: D

NEW QUESTION 10

What are two functions of ECDH and ECDSA? (Choose two.)

- A. nonrepudiation
- B. revocation
- C. digital signature
- D. key exchange
- E. encryption

Answer: CD

Explanation:

Reference: https://tools.cisco.com/security/center/resources/next_generation_cryptography

NEW QUESTION 12

What uses an Elliptic Curve key exchange algorithm?

- A. ECDSA
- B. ECDHE
- C. AES-GCM
- D. SHA

Answer: B

Explanation:

Reference: <https://blog.cloudflare.com/a-relatively-easy-to-understand-primer-on-elliptic-curve-cryptography/>

NEW QUESTION 15

Which two remote access VPN solutions support SSL? (Choose two.)

- A. FlexVPN
- B. clientless
- C. EZVPN
- D. L2TP
- E. Cisco AnyConnect

Answer: BE

NEW QUESTION 18

Which VPN solution uses TBAR?

- A. GETVPN
- B. VTI
- C. DMVPN
- D. Cisco AnyConnect

Answer: A

Explanation:

Reference: https://www.cisco.com/c/en/us/td/docs/ios-xml/ios/sec_conn_getvpn/configuration/xr-3s/sec-get-vpn-xr-3s-book/sec-get-vpn.html

NEW QUESTION 22

Which two commands help determine why the NHRP registration process is not being completed even after the IPsec tunnel is up? (Choose two.)

- A. show crypto isakmp sa
- B. show ip traffic
- C. show crypto ipsec sa
- D. show ip nhrp traffic
- E. show dmvpn detail

Answer: AD

NEW QUESTION 25

Cisco AnyConnect clients need to transfer large files over the VPN sessions. Which protocol provides the best throughput?

- A. SSL/TLS
- B. L2TP
- C. DTLS
- D. IPsec IKEv1

Answer: C

NEW QUESTION 30

Which VPN does VPN load balancing on the ASA support?

- A. VTI
- B. IPsec site-to-site tunnels
- C. L2TP over IPsec
- D. Cisco AnyConnect

Answer: D

NEW QUESTION 31

Which parameter is initially used to elect the primary key server from a group of key servers?

- A. code version
- B. highest IP address
- C. highest-priority value
- D. lowest IP address

Answer: C

Explanation:

Reference: https://www.cisco.com/c/en/us/products/collateral/security/group-encrypted-transport-vpn/deployment_guide_c07_554713.html

NEW QUESTION 34

A Cisco ASA is configured in active/standby mode. What is needed to ensure that Cisco AnyConnect users can connect after a failover event?

- A. AnyConnect images must be uploaded to both failover ASA devices.
- B. The vpnsession-db must be cleared manually.
- C. Configure a backup server in the XML profile.
- D. AnyConnect client must point to the standby IP address.

Answer: A

Explanation:

Reference: https://www.cisco.com/c/en/us/td/docs/security/asa/asa90/configuration/guide/asa_90_cli_config/ha_active_standby.html

NEW QUESTION 35

Which benefit of FlexVPN is a limitation of DMVPN using IKEv1?

- A. GRE encapsulation allows for forwarding of non-IP traffic.
- B. IKE implementation can install routes in routing table.
- C. NHRP authentication provides enhanced security.
- D. Dynamic routing protocols can be configured.

Answer: B

NEW QUESTION 36

Where is split tunneling defined for IKEv2 remote access clients on a Cisco router?

- A. IKEv2 authorization policy
- B. Group Policy
- C. virtual template
- D. webvpn context

Answer: B

NEW QUESTION 38

Which feature of GETVPN is a limitation of DMVPN and FlexVPN?

- A. sequence numbers that enable scalable replay checking
- B. enabled use of ESP or AH
- C. design for use over public or private WAN
- D. no requirement for an overlay routing protocol

Answer: D

NEW QUESTION 40

.....

Thank You for Trying Our Product

We offer two products:

1st - We have Practice Tests Software with Actual Exam Questions

2nd - Questons and Answers in PDF Format

300-730 Practice Exam Features:

- * 300-730 Questions and Answers Updated Frequently
- * 300-730 Practice Questions Verified by Expert Senior Certified Staff
- * 300-730 Most Realistic Questions that Guarantee you a Pass on Your FirstTry
- * 300-730 Practice Test Questions in Multiple Choice Formats and Updatesfor 1 Year

100% Actual & Verified — Instant Download, Please Click
[Order The 300-730 Practice Test Here](#)