

## Exam Questions NSE4\_FGT-7.2

Fortinet NSE 4 - FortiOS 7.2

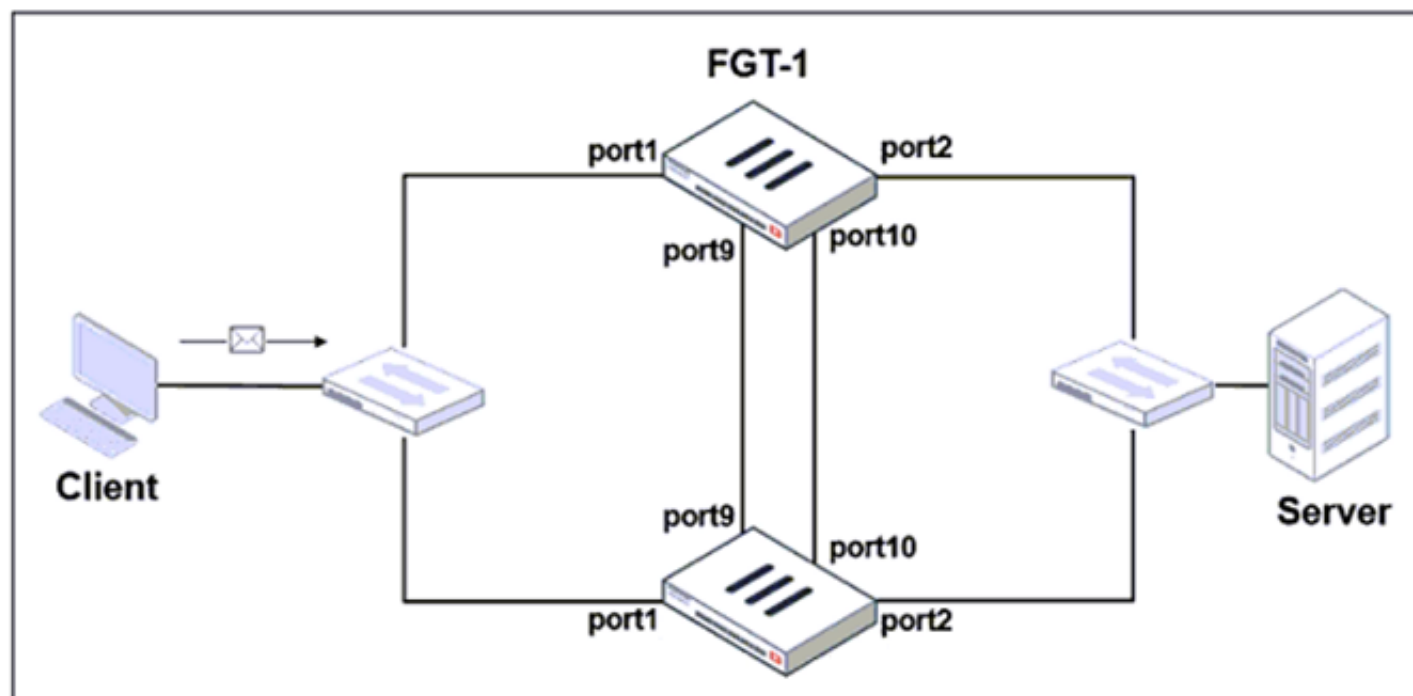
[https://www.2passeasy.com/dumps/NSE4\\_FGT-7.2/](https://www.2passeasy.com/dumps/NSE4_FGT-7.2/)



**NEW QUESTION 1**

Refer to the exhibits.

Exhibit A shows a topology for a FortiGate HA cluster that performs proxy-based inspection on traffic. Exhibit B shows the HA configuration and the partial output of the get system ha status command.

**Exhibit A****Exhibit B**

```
set group-id 3
set group-name "NSE"
set mode a-a
set password *
set hbdev "port9" 50 "port10" 50
set session-pickup enable
set override disable
set monitor port3
end

# get system ha status
...
Primary      : FGT-2, FGVM010000065036, HA cluster index = 1
Secondary    : FGT-1, FGVM010000064692, HA cluster index = 0
number of vcluster: 1
vcluster 1: work 169.254.0.2
Primary: FGVM010000065036, HA operating index = 1
Secondary: FGVM010000064692, HA operating index = 0
```

Based on the exhibits, which two statements about the traffic passing through the cluster are true? (Choose two.)

- A. For non-load balanced connections, packets forwarded by the cluster to the server contain the virtual MAC address of port2 as source.
- B. The traffic sourced from the client and destined to the server is sent to FGT-1.
- C. The cluster can load balance ICMP connections to the secondary.
- D. For load balanced connections, the primary encapsulates TCP SYN packets before forwarding them to the secondary.

**Answer:** AD

**Explanation:**

FortiGate Infrastructure 7.2 Study Guide (p.317 & p.320): "To forward traffic correctly, a FortiGate HA solution uses virtual MAC addresses." "The primary forwards the SYN packet to the selected secondary. (...) This is also known as MAC address rewrite. In addition, the primary encapsulates the packet in an Ethernet frame type 0x8891. The encapsulation is done only for the first packet of a load balanced session. The encapsulated packet includes the original packet plus session information that the secondary requires to process the traffic."

**NEW QUESTION 2**

An administrator is configuring an IPsec VPN between site A and site B. The Remote Gateway setting in both sites has been configured as Static IP Address. For site A, the local quick mode selector is 192. 168. 1.0/24 and the remote quick mode selector is 192. 168.2.0/24. Which subnet must the administrator configure for the local quick mode selector for site B?

- A. 192. 168. 1.0/24
- B. 192. 168.0.0/24
- C. 192. 168.2.0/24
- D. 192. 168.3.0/24

**Answer:** C

**Explanation:**

For an IPsec VPN between site A and site B, the administrator has configured the local quick mode selector for site A as 192.168.1.0/24 and the remote quick

mode selector as 192.168.2.0/24. This means that the VPN will allow traffic to and from the 192.168.1.0/24 subnet at site A to reach the 192.168.2.0/24 subnet at site B.

To complete the configuration, the administrator must configure the local quick mode selector for site B. To do this, the administrator must use the same subnet as the remote quick mode selector for site A, which is 192.168.2.0/24. This will allow traffic to and from the 192.168.2.0/24 subnet at site B to reach the 192.168.1.0/24 subnet at site A.

Therefore, the administrator must configure the local quick mode selector for site B as 192.168.2.0/24.

### NEW QUESTION 3

Refer to the exhibit.



Name	Severity	Target	OS	Action	CVE-ID
FTP.Login.Failed	Server	All		Pass	

Review the Intrusion Prevention System (IPS) profile signature settings. Which statement is correct in adding the FTP.Login.Failed signature to the IPS sensor profile?

- A. The signature setting uses a custom rating threshold.
- B. The signature setting includes a group of other signatures.
- C. Traffic matching the signature will be allowed and logged.
- D. Traffic matching the signature will be silently dropped and logged.

**Answer: D**

#### Explanation:

Select Block to silently drop traffic matching any of the signatures included in the entry. So, while the default action would be 'Pass' for this signature the administrator is specifically overriding that to set the Block action. To use the default action the setting would have to be 'Default'. Action is drop, signature default action is listed only in the signature, it would only match if action was set to default.

### NEW QUESTION 4

If the Services field is configured in a Virtual IP (VIP), which statement is true when central NAT is used?

- A. The Services field prevents SNAT and DNAT from being combined in the same policy.
- B. The Services field is used when you need to bundle several VIPs into VIP groups.
- C. The Services field removes the requirement to create multiple VIPs for different services.
- D. The Services field prevents multiple sources of traffic from using multiple services to connect to a single computer.

**Answer: C**

### NEW QUESTION 5

An employee needs to connect to the office through a high-latency internet connection.

Which SSL VPN setting should the administrator adjust to prevent SSL VPN negotiation failure?

- A. idle-timeout
- B. login-timeout
- C. udp-idle-timer
- D. session-ttl

**Answer: B**

#### Explanation:

FortiGate Infrastructure 7.2 Study Guide (p.222):

"When connected to SSL VPN over high latency connections, FortiGate can time out the client before the client can finish the negotiation process, such as DNS lookup and time to enter a token. Two new CLI commands under config vpn ssl settings have been added to address this. The first command allows you to set up the login timeout, replacing the previous hard timeout value. The second command allows you to set up the maximum DTLS hello timeout for SSL VPN connections."

### NEW QUESTION 6

Which of the following statements is true regarding SSL VPN settings for an SSL VPN portal?

- A. By default, FortiGate uses WINS servers to resolve names.
- B. By default, the SSL VPN portal requires the installation of a client's certificate.
- C. By default, split tunneling is enabled.
- D. By default, the admin GUI and SSL VPN portal use the same HTTPS port.

**Answer: D**

### NEW QUESTION 7

Which two actions can you perform only from the root FortiGate in a Security Fabric? (Choose two.)

- A. Shut down/reboot a downstream FortiGate device.
- B. Disable FortiAnalyzer logging for a downstream FortiGate device.
- C. Log in to a downstream FortiSwitch device.
- D. Ban or unban compromised hosts.

Answer: AB

### NEW QUESTION 8

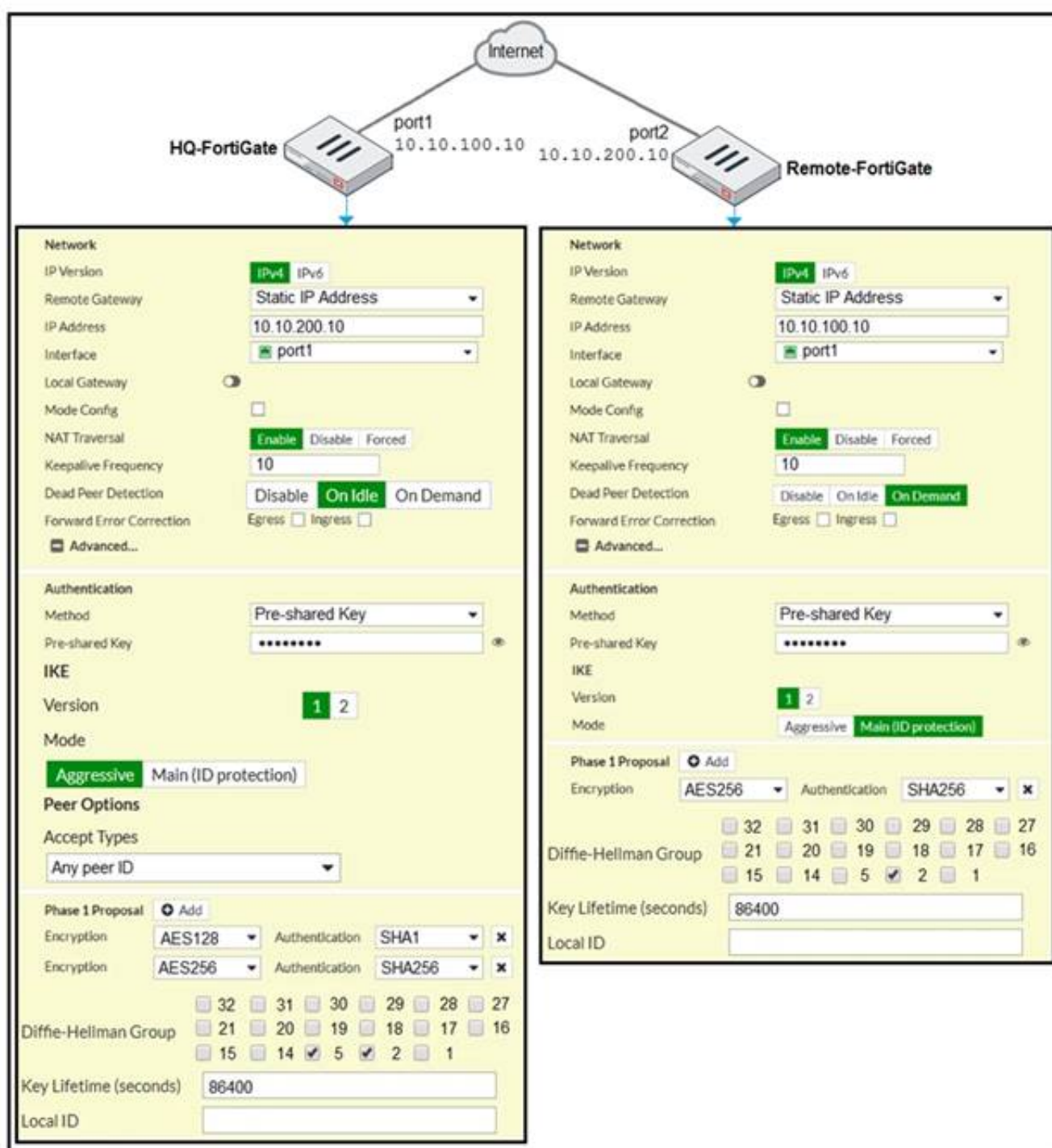
An administrator does not want to report the logon events of service accounts to FortiGate. What setting on the collector agent is required to achieve this?

- A. Add the support of NTLM authentication.
- B. Add user accounts to Active Directory (AD).
- C. Add user accounts to the FortiGate group filter.
- D. Add user accounts to the Ignore User List.

Answer: D

### NEW QUESTION 9

A network administrator is troubleshooting an IPsec tunnel between two FortiGate devices. The administrator has determined that phase 1 fails to come up. The administrator has also re-entered the pre-shared key on both FortiGate devices to make sure they match.



Based on the phase 1 configuration and the diagram shown in the exhibit, which two configuration changes will bring phase 1 up? (Choose two.)

- A. On HQ-FortiGate, set IKE mode to Main (ID protection).
- B. On both FortiGate devices, set Dead Peer Detection to On Demand.
- C. On HQ-FortiGate, disable Diffie-Hellman group 2.
- D. On Remote-FortiGate, set port2 as Interface.

Answer: AD

### Explanation:

"In IKEv1, there are two possible modes in which the IKE SA negotiation can take place: main, and aggressive mode. Settings on both ends must agree; otherwise, phase 1 negotiation fails and both IPsec peers are not able to establish a secure channel."

### NEW QUESTION 10

Refer to the exhibits to view the firewall policy (Exhibit A) and the antivirus profile (Exhibit B).



Edit Policy

Inspection Mode

Flow-based

Proxy-based

Firewall / Network Options

NAT

☒

IP Pool Configuration

Use Outgoing Interface Address

Use Dynamic IP Pool

Preserve Source Port

☐

Protocol Options

PRX

default

Security Profiles

AntiVirus

☒

AV

default

Web Filter

☐

DNS Filter

☐

Application Control

☐

IPS

☐

SSL Inspection

SSL

deep-inspection

Decrypted Traffic Mirror

☐

Edit AntiVirus Profile

Name

default

Comments

Scan files and block viruses.

29/255

Detect Viruses

Block

Monitor

Feature set

Flow-based

Proxy-based

Inspected Protocols

HTTP

☒

SMTP

☒

POP3

☒

IMAP

☒

FTP

☒

CIFS

☐

APT Protection Options

Treat Windows Executables in Email Attachments as Viruses

☒

Include Mobile Malware Protection

☒

Virus Outbreak Prevention

Use FortiGuard Outbreak Prevention Database

☐

Use External Malware Block List

☐

Which statement is correct if a user is unable to receive a block replacement message when downloading an infected file for the first time?

- A. The firewall policy performs the full content inspection on the file.
- B. The flow-based inspection is used, which resets the last packet to the user.
- C. The volume of traffic being inspected is too high for this model of FortiGate.
- D. The intrusion prevention security profile needs to be enabled when using flow-based inspection mode.

**Answer:** B

**Explanation:**

- "ONLY" If the virus is detected at the "START" of the connection, the IPS engine sends the block replacement message immediately
- When a virus is detected on a TCP session (FIRST TIME), but where "SOME PACKETS" have been already forwarded to the receiver, FortiGate "resets the connection" and does not send the last piece of the file. Although the receiver got most of the file content, the file has been truncated and therefore, can't be opened. The IPS engine also caches the URL of the infected file, so that if a "SECOND ATTEMPT" to transmit the file is made, the IPS engine will then send a block replacement message to the client instead of scanning the file again.

Passing Certification Exams Made Easy

visit - <https://www.2PassEasy.com>

In flow mode, the FortiGate drops the last packet killing the file. But because of that the block replacement message cannot be displayed. If the file is attempted to download again the block message will be shown.

#### NEW QUESTION 10

Which statements about the firmware upgrade process on an active-active HA cluster are true? (Choose two.)

- A. The firmware image must be manually uploaded to each FortiGate.
- B. Only secondary FortiGate devices are rebooted.
- C. Uninterruptable upgrade is enabled by default.
- D. Traffic load balancing is temporally disabled while upgrading the firmware.

Answer: CD

#### NEW QUESTION 12

Refer to the exhibit.

```
vcluster_nr=1
vcluster_0: start_time=1593701974(2020-07-02 10:59:34), state/o/chg_time=2(work)/2
(work)/1593701169(2020-07-02 10:46:09)
  pingsvr_flip_timeout/expire=3600s/2781s
  'FGVM010000064692': ha_prio/o=1/1, link_failure=0, pingsvr_failure=0, flag=
0x00000000, uptime/reset_cnt=198/0
  'FGVM010000065036': ha_prio/o=0/0, link_failure=0, pingsvr_failure=0, flag=
0x00000001, uptime/reset_cnt=0/1
```

The exhibit displays the output of the CLI command: diagnose sys ha dump-by vcluster. Which two statements are true? (Choose two.)

- A. FortiGate SN FGVM010000065036 HA uptime has been reset.
- B. FortiGate devices are not in sync because one device is down.
- C. FortiGate SN FGVM010000064692 is the primary because of higher HA uptime.
- D. FortiGate SN FGVM010000064692 has the higher HA priority.

Answer: AD

#### Explanation:

\* 1. Override is disable by default - OK

\* 2. "If the HA uptime of a device is AT LEAST FIVE MINUTES (300 seconds) MORE than the HA Uptime of the other FortiGate devices, it becomes the primary"

The QUESTION NO: here is : HA Uptime of FGVM01000006492 > 5 minutes? NO - 198 seconds < 300 seconds (5 minutes) Page 314 Infra Study Guide.

<https://docs.fortinet.com/document/fortigate/6.0.0/handbook/666653/primary-unit-selection-with-override-disab>

#### NEW QUESTION 14

Which of the following conditions must be met in order for a web browser to trust a web server certificate signed by a third-party CA?

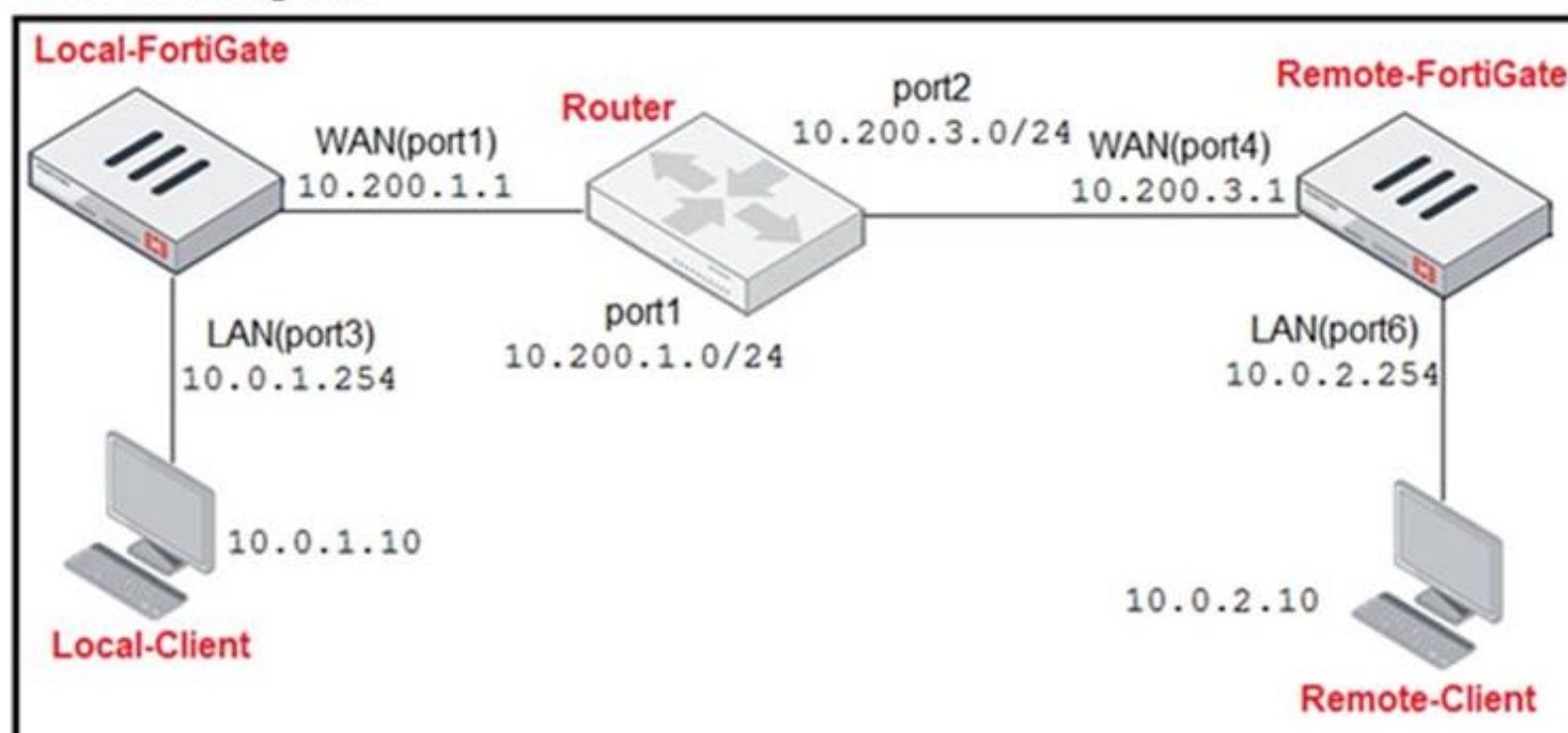
- A. The public key of the web server certificate must be installed on the browser.
- B. The web-server certificate must be installed on the browser.
- C. The CA certificate that signed the web-server certificate must be installed on the browser.
- D. The private key of the CA certificate that signed the browser certificate must be installed on the browser.

Answer: C

#### NEW QUESTION 16

Refer to the exhibit.

#### Network Diagram



## Central SNAT Policies Local-FortiGate

ID	From	To	Source Address	Protocol Number	Destination Address	Translated Address
2	LAN(port3)	WAN(port1)	all	6	REMOTE_FORTIGATE	SNAT-Pool
1	LAN(port3)	WAN(port1)	all	1	all	SNAT-Remote1
3	LAN(port3)	WAN(port1)	all	2	all	SNAT-Remote

## IP Pool Local-FortiGate

Name	External IP Range	Type	ARP Reply
SNAT-Pool	10.200.1.49-10.200.1.49	Overload	Enabled
SNAT-Remote	10.200.1.149-10.200.1.149	Overload	Enabled
SNAT-Remote1	10.200.1.99-10.200.1.99	Overload	Enabled

## Protocol Number Table

Protocol	Protocol Number
TCP	6
ICMP	1
IGMP	2

The exhibit contains a network diagram, central SNAT policy, and IP pool configuration. The WAN (port1) interface has the IP address 10.200. 1. 1/24.

The LAN (port3) interface has the IP address 10.0. 1.254/24.

A firewall policy is configured to allow to destinations from LAN (port3) to WAN (port1). Central NAT is enabled, so NAT settings from matching Central SNAT policies will be applied.

Which IP address will be used to source NAT the traffic, if the user on Local-Client (10.0. 1. 10) pings the IP address of Remote-FortiGate (10.200.3. 1)?

- A. 10.200. 1. 149
- B. 10.200. 1. 1
- C. 10.200. 1.49
- D. 10.200. 1.99

**Answer:** D

### NEW QUESTION 19

Why does FortiGate Keep TCP sessions in the session table for several seconds, even after both sides (client and server) have terminated the session?

- A. To allow for out-of-order packets that could arrive after the FIN/ACK packets
- B. To finish any inspection operations
- C. To remove the NAT operation
- D. To generate logs

**Answer:** A

### Explanation:

TCP provides the ability for one end of a connection to terminate its output while still receiving data from the other end. This is called a half-close. FortiGate unit implements a specific timer before removing an entry in the firewall session table.

### NEW QUESTION 20

Which scanning technique on FortiGate can be enabled only on the CLI?

- A. Heuristics scan
- B. Trojan scan
- C. Antivirus scan
- D. Ransomware scan

**Answer:** A

### NEW QUESTION 24

Examine this FortiGate configuration:



```
config authentication setting
    set active-auth-scheme SCHEME1
end
config authentication rule
    edit WebProxyRule
        set srcaddr 10.0.1.0/24
        set active-auth-method SCHEME2
    next
end
```

How does the FortiGate handle web proxy traffic coming from the IP address 10.2.1.200 that requires authorization?

- A. It always authorizes the traffic without requiring authentication.
- B. It drops the traffic.
- C. It authenticates the traffic using the authentication scheme SCHEME2.
- D. It authenticates the traffic using the authentication scheme SCHEME1.

**Answer:** D

**Explanation:**

"What happens to traffic that requires authorization, but does not match any authentication rule? The active and passive SSO schemes to use for those cases is defined under config authentication setting"

**NEW QUESTION 28**

Which of the following SD-WAN load balancing method use interface weight value to distribute traffic? (Choose two.)

- A. Source IP
- B. Spillover
- C. Volume
- D. Session

**Answer:** CD

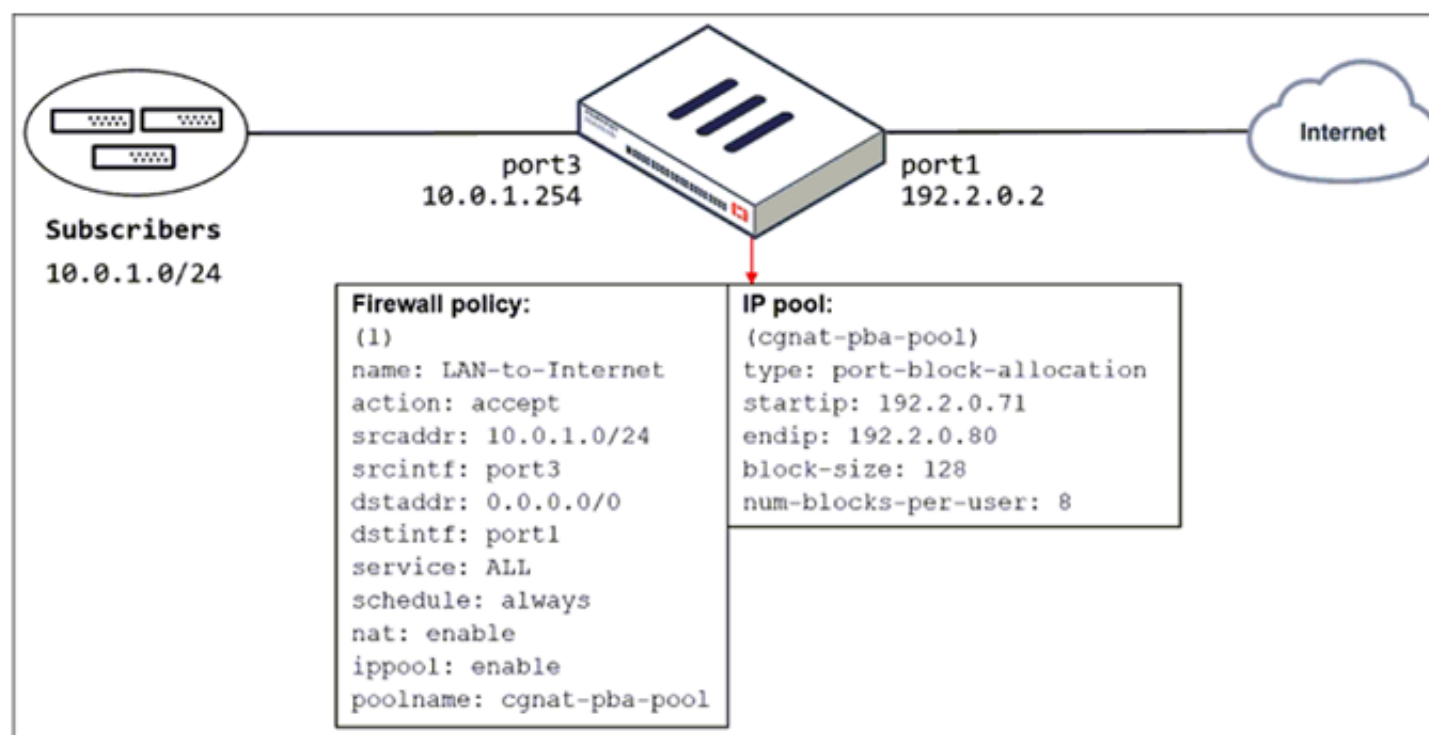
**Explanation:**

<https://docs.fortinet.com/document/fortigate/6.0.0/handbook/49719/configuring-sd-wan-load-balancing>

**NEW QUESTION 33**

Refer to the exhibit.

The exhibit shows a diagram of a FortiGate device connected to the network and the firewall policy and IP pool configuration on the FortiGate device.



Which two actions does FortiGate take on internet traffic sourced from the subscribers? (Choose two.)

- A. FortiGate allocates port blocks per user, based on the configured range of internal IP addresses.
- B. FortiGate allocates port blocks on a first-come, first-served basis.
- C. FortiGate generates a system event log for every port block allocation made per user.
- D. FortiGate allocates 128 port blocks per user.

**Answer:** BC

**Explanation:**

FortiGate Security 7.2 Study Guide (p.109): "FortiGate allocates port blocks on a first-come, first-served basis." "For logging purposes, when FortiGate allocates a port block to a host, it generates a system event log to inform the administrator."

**NEW QUESTION 36**

An administrator is configuring an Ipsec between site A and siteB. The Remotes Gateway setting in both sites has been configured as Static IP Address. For site A, the local quick mode selector is 192. 16. 1.0/24 and the remote quick mode selector is 192. 16.2.0/24. How must the administrator configure the local quick mode selector for site B?



- A. 192. 168.3.0/24
- B. 192. 168.2.0/24
- C. 192. 168. 1.0/24
- D. 192. 168.0.0/8

**Answer:** B

#### NEW QUESTION 39

Which three options are the remote log storage options you can configure on FortiGate? (Choose three.)

- A. FortiCache
- B. FortiSIEM
- C. FortiAnalyzer
- D. FortiSandbox
- E. FortiCloud

**Answer:** BCE

#### NEW QUESTION 43

Which two statements are true about the FGCP protocol? (Choose two.)

- A. FGCP elects the primary FortiGate device.
- B. FGCP is not used when FortiGate is in transparent mode.
- C. FGCP runs only over the heartbeat links.
- D. FGCP is used to discover FortiGate devices in different HA groups.

**Answer:** AC

#### Explanation:

The FGCP (FortiGate Clustering Protocol) is a protocol that is used to manage high availability (HA) clusters of FortiGate devices. It performs several functions, including the following:

FGCP elects the primary FortiGate device: In an HA cluster, FGCP is used to determine which FortiGate device will be the primary device, responsible for handling traffic and making decisions about what to allow or block. FGCP uses a variety of factors, such as the device's priority, to determine which device should be the primary.

FGCP runs only over the heartbeat links: FGCP communicates between FortiGate devices in the HA cluster using the heartbeat links. These are dedicated links that are used to exchange status and control information between the devices. FGCP does not run over other types of links, such as data links.

#### NEW QUESTION 46

Refer to the exhibit.

Edit IPS Sensor

Name

WINDOWS\_SERVERS

Comments

Write a comment... 0/255

Block malicious URLs

☐

IPS Signatures and Filters

+ Create New

Edit

Delete

Details	Exempt IPs	Action	Packet Logging	Status
NTP.Spoofed.KoD.DoS	0	Monitor	Enabled	Enabled
OS Windows		Block	Disabled	Enabled

The exhibit shows the IPS sensor configuration.

If traffic matches this IPS sensor, which two actions is the sensor expected to take? (Choose two.)

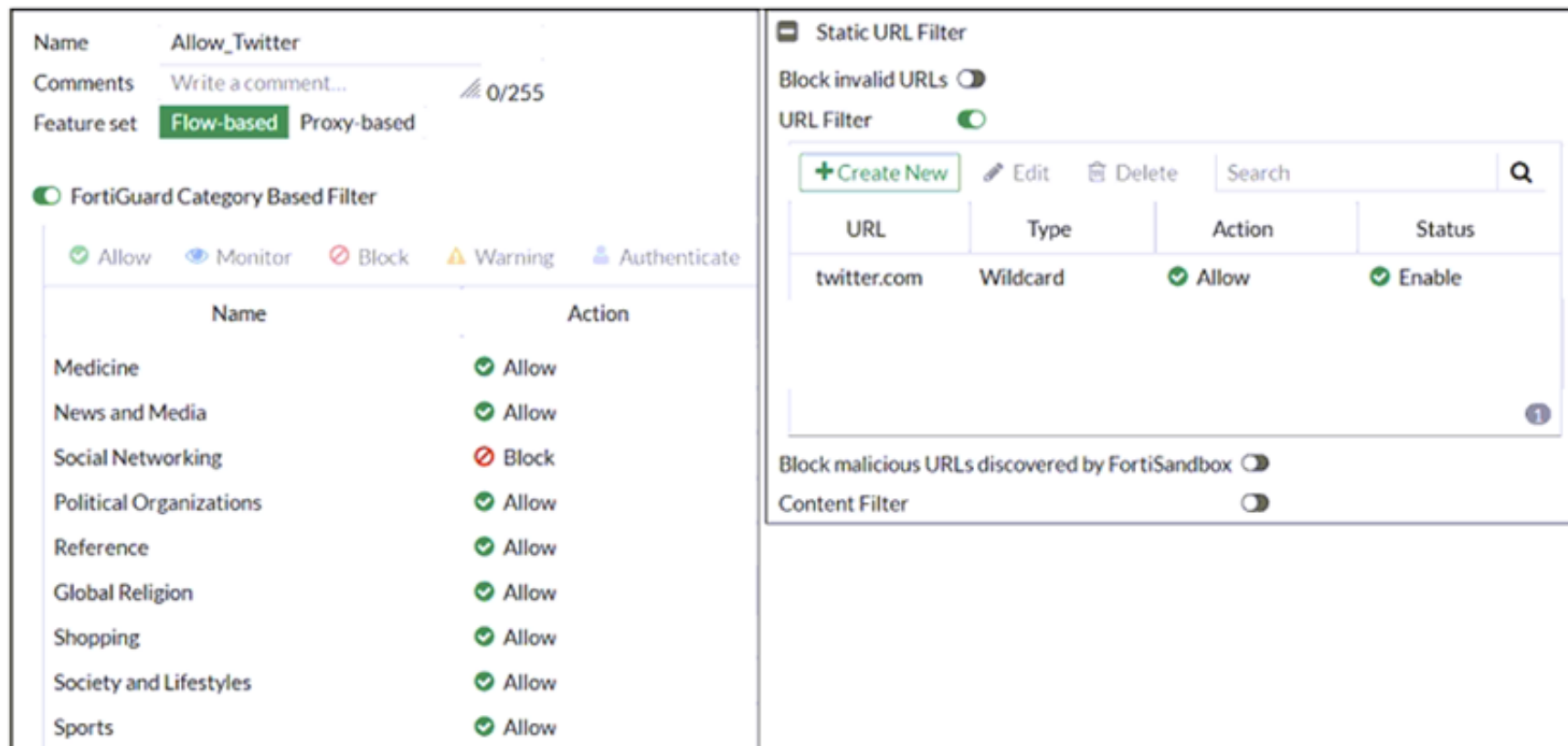
- A. The sensor will allow attackers matching the Microsoft Windows.iSCSI.Target.DoS signature.
- B. The sensor will block all attacks aimed at Windows servers.
- C. The sensor will reset all connections that match these signatures.
- D. The sensor will gather a packet log for all matched traffic.

**Answer:** AB

#### NEW QUESTION 50

Refer to exhibit.

An administrator configured the web filtering profile shown in the exhibit to block access to all social networking sites except Twitter. However, when users try to access twitter.com, they are redirected to a FortiGuard web filtering block page.



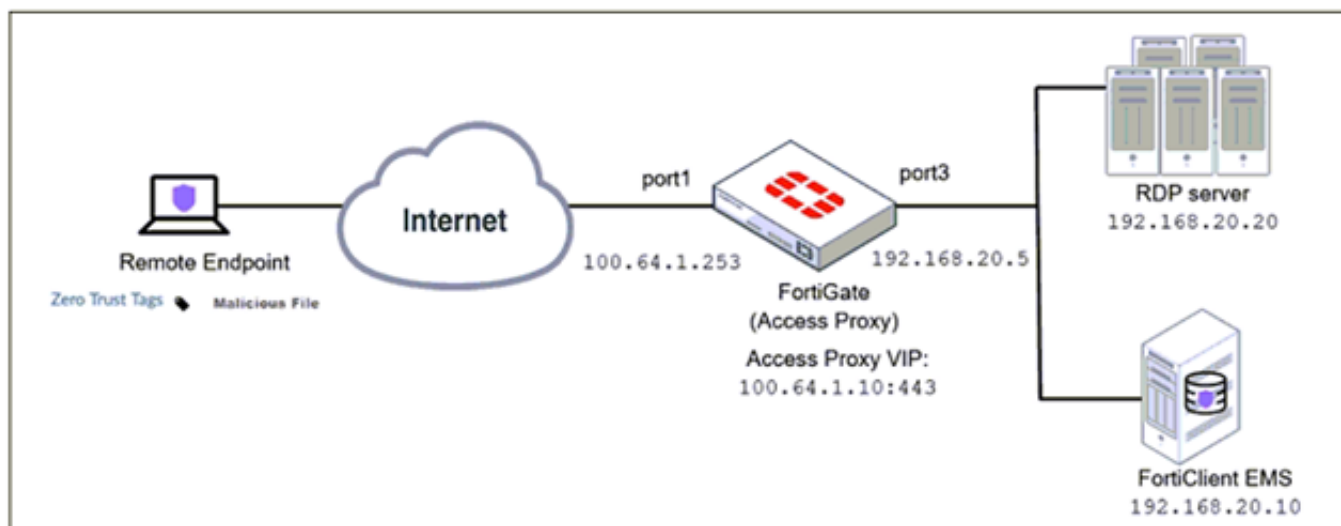
Based on the exhibit, which configuration change can the administrator make to allow Twitter while blocking all other social networking sites?

- A. On the FortiGuard Category Based Filter configuration, set Action to Warning for Social Networking
- B. On the Static URL Filter configuration, set Type to Simple
- C. On the Static URL Filter configuration, set Action to Exempt.
- D. On the Static URL Filter configuration, set Action to Monitor.

Answer: C

#### NEW QUESTION 55

Refer to the exhibit.



Based on the ZTNA tag, the security posture of the remote endpoint has changed. What will happen to endpoint active ZTNA sessions?

- A. They will be re-evaluated to match the endpoint policy.
- B. They will be re-evaluated to match the firewall policy.
- C. They will be re-evaluated to match the ZTNA policy.
- D. They will be re-evaluated to match the security policy.

Answer: C

#### Explanation:

https://docs.fortinet.com/document/fortigate/7.0.0/new-features/580880/posture-check-verification-for-active-zt FortiGate Infrastructure 7.2 Study Guide (p.182):  
"Endpoint posture changes trigger active ZTNA proxy sessions to be re-verified and terminated if the endpoint is no longer compliant with the ZTNA policy."

#### NEW QUESTION 56

Which statement describes a characteristic of automation stitches?

- A. They can have one or more triggers.
- B. They can be run only on devices in the Security Fabric.
- C. They can run multiple actions simultaneously.
- D. They can be created on any device in the fabric.

Answer: C

#### Explanation:

https://docs.fortinet.com/document/fortigate/6.2.0/cookbook/351998/creating-automation-stitches

#### NEW QUESTION 58

Which two statements are true about the RPF check? (Choose two.)

- A. The RPF check is run on the first sent packet of any new session.
- B. The RPF check is run on the first reply packet of any new session.
- C. The RPF check is run on the first sent and reply packet of any new session.
- D. RPF is a mechanism that protects FortiGate and your network from IP spoofing attacks.

Answer: AD

#### NEW QUESTION 60

Refer to the exhibit.

Name Custom_Profile	
Comments	<input type="text"/> 0/255
Access Permissions	
Access Control	Permissions <span>Set All</span>
Security Fabric	<input type="radio"/> None <input type="radio"/> Read <input checked="" type="radio"/> Read/Write
FortiView	<input type="radio"/> None <input type="radio"/> Read <input checked="" type="radio"/> Read/Write
User & Device	<input type="radio"/> None <input type="radio"/> Read <input checked="" type="radio"/> Read/Write
Firewall	<input type="radio"/> None <input checked="" type="radio"/> Read <input type="radio"/> Read/Write <input type="radio"/> Custom
Log & Report	<input type="radio"/> None <input checked="" type="radio"/> Read <input type="radio"/> Read/Write <input type="radio"/> Custom
Network	<input type="radio"/> None <input checked="" type="radio"/> Read <input type="radio"/> Read/Write <input type="radio"/> Custom
System	<input type="radio"/> None <input type="radio"/> Read <input checked="" type="radio"/> Read/Write <input type="radio"/> Custom
Security Profile	<input type="radio"/> None <input type="radio"/> Read <input checked="" type="radio"/> Read/Write <input type="radio"/> Custom
VPN	<input type="radio"/> None <input type="radio"/> Read <input checked="" type="radio"/> Read/Write
WAN Opt & Cache	<input type="radio"/> None <input type="radio"/> Read <input checked="" type="radio"/> Read/Write
WiFi & Switch	<input type="radio"/> None <input type="radio"/> Read <input checked="" type="radio"/> Read/Write
Permit usage of CLI diagnostic commands <input type="checkbox"/>	
<input type="checkbox"/> Override Idle Timeout	

Based on the administrator profile settings, what permissions must the administrator set to run the diagnose firewall auth list CLI command on FortiGate?

- A. Custom permission for Network
- B. Read/Write permission for Log & Report
- C. CLI diagnostics commands permission
- D. Read/Write permission for Firewall

Answer: C

#### Explanation:

<https://kb.fortinet.com/kb/documentLink.do?externalID=FD50220>

#### NEW QUESTION 61

A team manager has decided that, while some members of the team need access to a particular website, the majority of the team does not Which configuration option is the most effective way to support this request?

- A. Implement a web filter category override for the specified website
- B. Implement a DNS filter for the specified website.
- C. Implement web filter quotas for the specified website
- D. Implement web filter authentication for the specified website.

Answer: D

#### NEW QUESTION 63

Which of the following are valid actions for FortiGuard category based filter in a web filter profile ui proxy-based inspection mode? (Choose two.)



- A. Warning
- B. Exempt
- C. Allow
- D. Learn

**Answer:** AC

#### NEW QUESTION 65

FortiGate is operating in NAT mode and is configured with two virtual LAN (VLAN) subinterfaces added to the same physical interface. In this scenario, which statement about VLAN IDs is true?

- A. The two VLAN subinterfaces can have the same VLAN ID only if they belong to different VDOMs.
- B. The two VLAN subinterfaces must have different VLAN IDs.
- C. The two VLAN subinterfaces can have the same VLAN ID only if they have IP addresses in the same subnet.
- D. The two VLAN subinterfaces can have the same VLAN ID only if they have IP addresses in different subnets.

**Answer:** CD

#### NEW QUESTION 67

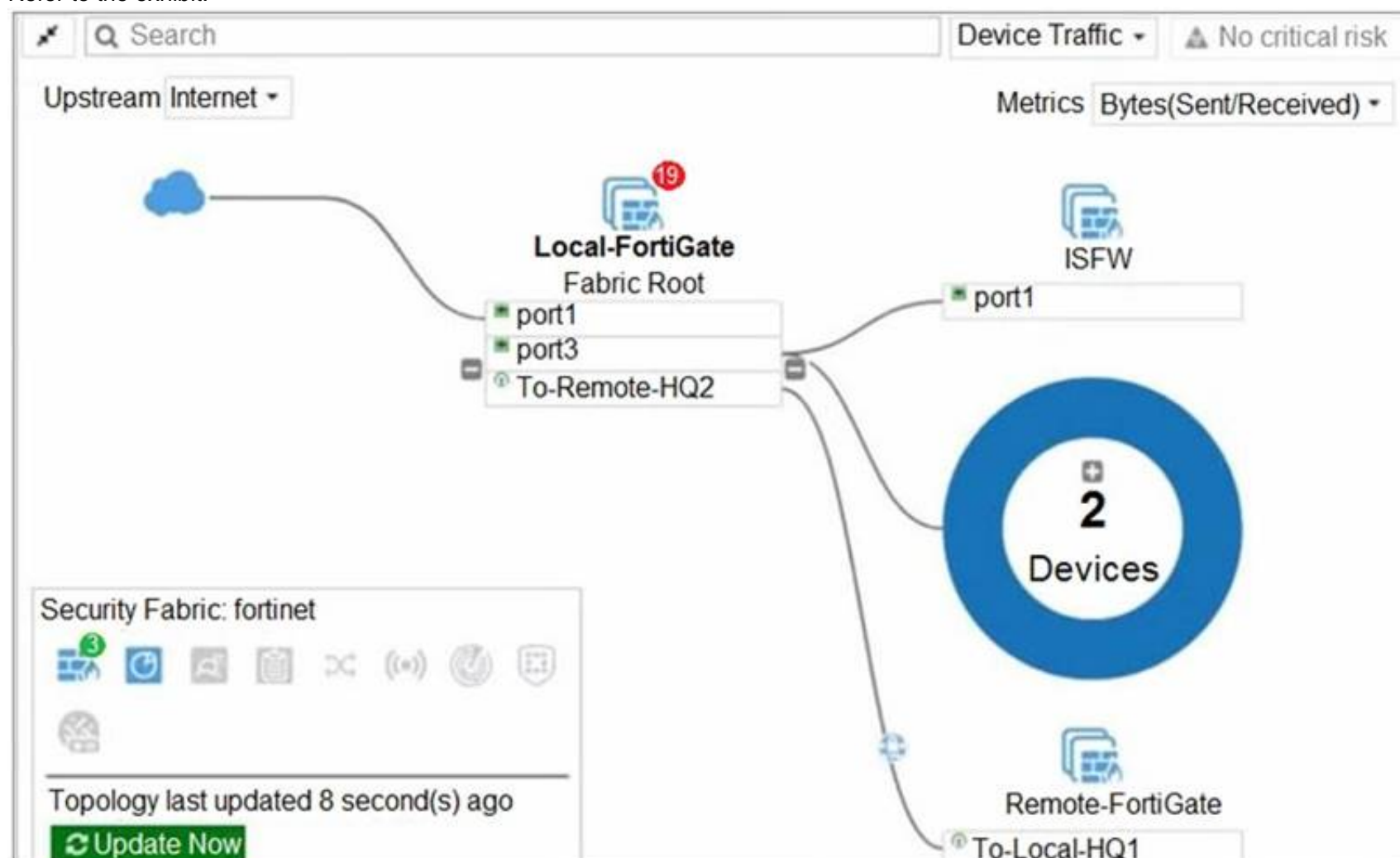
Which of the following statements about central NAT are true? (Choose two.)

- A. IP tool references must be removed from existing firewall policies before enabling central NAT .
- B. Central NAT can be enabled or disabled from the CLI only.
- C. Source NAT, using central NAT, requires at least one central SNAT policy.
- D. Destination NAT, using central NAT, requires a VIP object as the destination address in a firewall.

**Answer:** AB

#### NEW QUESTION 68

Refer to the exhibit.



Given the security fabric topology shown in the exhibit, which two statements are true? (Choose two.)

- A. There are five devices that are part of the security fabric.
- B. Device detection is disabled on all FortiGate devices.
- C. This security fabric topology is a logical topology view.
- D. There are 19 security recommendations for the security fabric.

**Answer:** CD

#### Explanation:

References: <https://docs.fortinet.com/document/fortigate/5.6.0/cookbook/761085/results>

<https://docs.fortinet.com/document/fortimanager/6.2.0/new-features/736125/security-fabric-topology>

#### NEW QUESTION 70

Refer to the exhibit.

Username	Administrator	Change Password
Type	<div>Local User</div> <div>Match a user on a remote server group</div> <div>Match all users in a remote server group</div> <div>Use public key infrastructure (PKI) group</div>	
Comments	Write a comment... 0/255	
Administrator Profile	prof_admin	
Email Address	admin@xyz.com	
<input type="checkbox"/> SMS		
<input type="checkbox"/> Two-factor Authentication		
<input type="checkbox"/> Restrict login to trusted hosts		
<input type="checkbox"/> Restrict admin to guest account provisioning only		

The global settings on a FortiGate device must be changed to align with company security policies. What does the Administrator account need to access the FortiGate global settings?

- A. Change password
- B. Enable restrict access to trusted hosts
- C. Change Administrator profile
- D. Enable two-factor authentication

**Answer:** C

#### NEW QUESTION 71

An administrator has a requirement to keep an application session from timing out on port 80. What two changes can the administrator make to resolve the issue without affecting any existing services running through FortiGate? (Choose two.)

- A. Create a new firewall policy with the new HTTP service and place it above the existing HTTP policy.
- B. Create a new service object for HTTP service and set the session TTL to never
- C. Set the TTL value to never under config system-ttl
- D. Set the session TTL on the HTTP policy to maximum

**Answer:** BC

#### NEW QUESTION 76

Refer to the exhibit showing a debug flow output.

```
id=20085 trace_id=1 func=print_pkt_detail line=5594 msg="vd-root:0 received a packet(proto=1,
10.0.1.10:19938->10.0.1.250:2048) from port1. type=8, code=0, id=19938, seq=1."
id=20085 trace_id=1 func=init_ip_session_common line=5760 msg="allocate a new session-00003dd5"
id=20085 trace_id=1 func=vf_ip_route_input_common line=2598 msg="find a route: flag=84000000 gw-
10.0.1.250 via root"
id=20085 trace_id=2 func=print_pkt_detail line=5594 msg="vd-root:0 received a packet(proto=1,
10.0.1.250:19938->10.0.1.10:0) from local. type=0, code=0, id=19938, seq=1."
id=20085 trace_id=2 func=resolve_ip_tuple_fast line=5675 msg="Find an existing session, id-
00003dd5, reply direction"
```

What two conclusions can you make from the debug flow output? (Choose two.)

- A. The debug flow is for ICMP traffic.
- B. The default route is required to receive a reply.
- C. A new traffic session was created.
- D. A firewall policy allowed the connection.

**Answer:** AC

#### Explanation:

The debug flow output shows the result of a diagnose command that captures the traffic flow between the source and destination IP addresses1. The debug flow output reveals the following information about the traffic flow1:

- The protocol is 1, which means that the traffic uses ICMP protocol2. ICMP is a protocol that is used to send error messages and test connectivity between devices2.
- The session state is 0, which means that a new traffic session was created3. A session is a data structure that stores information about a connection between two devices3.
- The policy ID is 1, which means that the traffic matched the firewall policy with ID 14. A firewall policy is a rule that defines how FortiGate processes traffic

based on the source, destination, service, and action parameters4.

➤ The action is 0, which means that the traffic was allowed by the firewall policy. An action is a parameter that specifies what FortiGate does with the traffic that matches a firewall policy.

Therefore, two conclusions that can be made from the debug flow output are:

- The debug flow is for ICMP traffic.
- A new traffic session was created.

#### NEW QUESTION 81

Which three authentication timeout types are availability for selection on FortiGate? (Choose three.)

- A. hard-timeout
- B. auth-on-demand
- C. soft-timeout
- D. new-session
- E. idle-timeout

**Answer:** ADE

**Explanation:**

<https://kb.fortinet.com/kb/documentLink.do?externalID=FD37221>

#### NEW QUESTION 86

.....



## THANKS FOR TRYING THE DEMO OF OUR PRODUCT

Visit Our Site to Purchase the Full Set of Actual NSE4\_FGT-7.2 Exam Questions With Answers.

We Also Provide Practice Exam Software That Simulates Real Exam Environment And Has Many Self-Assessment Features. Order the NSE4\_FGT-7.2 Product From:

[https://www.2passeasy.com/dumps/NSE4\\_FGT-7.2/](https://www.2passeasy.com/dumps/NSE4_FGT-7.2/)

## Money Back Guarantee

### NSE4\_FGT-7.2 Practice Exam Features:

- \* NSE4\_FGT-7.2 Questions and Answers Updated Frequently
- \* NSE4\_FGT-7.2 Practice Questions Verified by Expert Senior Certified Staff
- \* NSE4\_FGT-7.2 Most Realistic Questions that Guarantee you a Pass on Your FirstTry
- \* NSE4\_FGT-7.2 Practice Test Questions in Multiple Choice Formats and Updatesfor 1 Year