



Microsoft

Exam Questions DP-600

Implementing Analytics Solutions Using Microsoft Fabric

NEW QUESTION 1

HOTSPOT - (Topic 1)

You need to resolve the issue with the pricing group classification.

How should you complete the T-SQL statement? To answer, select the appropriate options in the answer area.

NOTE: Each correct selection is worth one point.

Answer Area

CREATE [dbo].[ProductsWithPricingGroup]

AS

SELECT ProductId,

ProductName,

ProductCategory,

ListPrice,

WHEN ListPrice <= 50 THEN 'low'

END AS PricingGroup

FROM dbo.Products

Answer Area

CREATE [dbo].[ProductsWithPricingGroup]

AS

SELECT ProductId,

ProductName,

ProductCategory,

ListPrice,

CASE WHEN ListPrice <= 50 THEN 'low'

END AS PricingGroup

FROM dbo.Products

- A. Mastered
- B. Not Mastered

Answer: A

Explanation:

C:\Users\Waqas Shahid\Desktop\Mudassir\Untitled.jpg

? You should use CREATE VIEW to make the pricing group logic available for T- SQL queries.

? The CASE statement should be used to determine the pricing group based on the list price.

The T-SQL statement should create a view that classifies products into pricing groups based on the list price. The CASE statement is the correct conditional logic to assign each product to the appropriate pricing group. This view will standardize the pricing group logic across different databases and semantic models.

NEW QUESTION 2

- (Topic 1)

You need to implement the date dimension in the data store. The solution must meet the technical requirements.

What are two ways to achieve the goal? Each correct answer presents a complete solution. NOTE: Each correct selection is worth one point.

- A. Populate the date dimension table by using a dataflow.
- B. Populate the date dimension table by using a Stored procedure activity in a pipeline.
- C. Populate the date dimension view by using T-SQL.
- D. Populate the date dimension table by using a Copy activity in a pipeline.

Answer: AB

Explanation:

Both a dataflow (A) and a Stored procedure activity in a pipeline (B) are capable of creating and populating a date dimension table. A dataflow can perform the transformation needed to create the date dimension, and it aligns with the preference for using low-code tools for data ingestion when possible. A Stored procedure could be written to generate the necessary date dimension data and executed within a pipeline, which also adheres to the technical requirements for the PoC.

NEW QUESTION 3

- (Topic 1)

What should you recommend using to ingest the customer data into the data store in the AnalyticsPOC workspace?

- A. a stored procedure
- B. a pipeline that contains a KQL activity
- C. a Spark notebook
- D. a dataflow

Answer: D

Explanation:

For ingesting customer data into the data store in the AnalyticsPOC workspace, a dataflow (D) should be recommended. Dataflows are designed within the Power BI service to ingest, cleanse, transform, and load data into the Power BI environment. They allow for the low-code ingestion and transformation of data as needed by Litware's technical requirements. References = You can learn more about dataflows and their use in Power BI environments in Microsoft's Power BI documentation.

NEW QUESTION 4

- (Topic 2)

You have a Fabric tenant that uses a Microsoft tower BI Premium capacity. You need to enable scale-out for a semantic model. What should you do first?

- A. At the semantic model level, set Large dataset storage format to Off.
- B. At the tenant level, set Create and use Metrics to Enabled.
- C. At the semantic model level, set Large dataset storage format to On.
- D. At the tenant level, set Data Activator to Enabled.

Answer: C

Explanation:

To enable scale-out for a semantic model, you should first set Large dataset storage format to On (C) at the semantic model level. This configuration is necessary to handle larger datasets effectively in a scaled-out environment. References = Guidance on configuring large dataset storage formats for scale-out is available in the Power BI documentation.

NEW QUESTION 5

- (Topic 2)

You have a Fabric tenant that contains a lakehouse. You plan to use a visual query to merge two tables.

You need to ensure that the query returns all the rows that are present in both tables. Which type of join should you use?

- A. left outer
- B. right anti
- C. full outer
- D. left anti
- E. right outer
- F. inner

Answer: C

Explanation:

When you need to return all rows that are present in both tables, you use a full outer join. This type of join combines the results of both left and right outer joins and returns all rows from both tables, with matching rows from both sides where available. If there is no match, the result is NULL on the side of the join where there is no match. References: Information about joins and their use in querying data in a lakehouse can be typically found in the SQL and data processing documentation of the Fabric tenant or lakehouse solutions.

NEW QUESTION 6

HOTSPOT - (Topic 2)

You have a Fabric warehouse that contains a table named Sales.Orders. Sales.Orders contains the following columns.

Name	Data type	Nullable
OrderID	Integer	No
CustomerID	Integer	No
OrderDate	Date	No
Quantity	Integer	Yes
Weight	Decimal(18, 3)	Yes
ListPrice	Decimal(18, 2)	No
SalePrice	Decimal(18, 2)	Yes

You need to write a T-SQL query that will return the following columns.

Name	Description
OrderID	Returns OrderID
CustomerID	Returns CustomerID
PeriodDate	Returns a date representing the first day of the month for OrderDate
DayName	Returns the name of the day for OrderDate, such as Wednesday

How should you complete the code? To answer, select the appropriate options in the answer area.
NOTE: Each correct selection is worth one point.

Answer Area

SELECT OrderID, CustomerID,

DATEFROMPARTS

DATE_BUCKET

DATEFROMPARTS

DATEPART

DATETRUNC

FR

DATENAME(

weekday

day

dayofyear

weekday

, OrderDate) AS DayName

FROM Sales.Orders

- A. Mastered
- B. Not Mastered

Answer: A

Explanation:

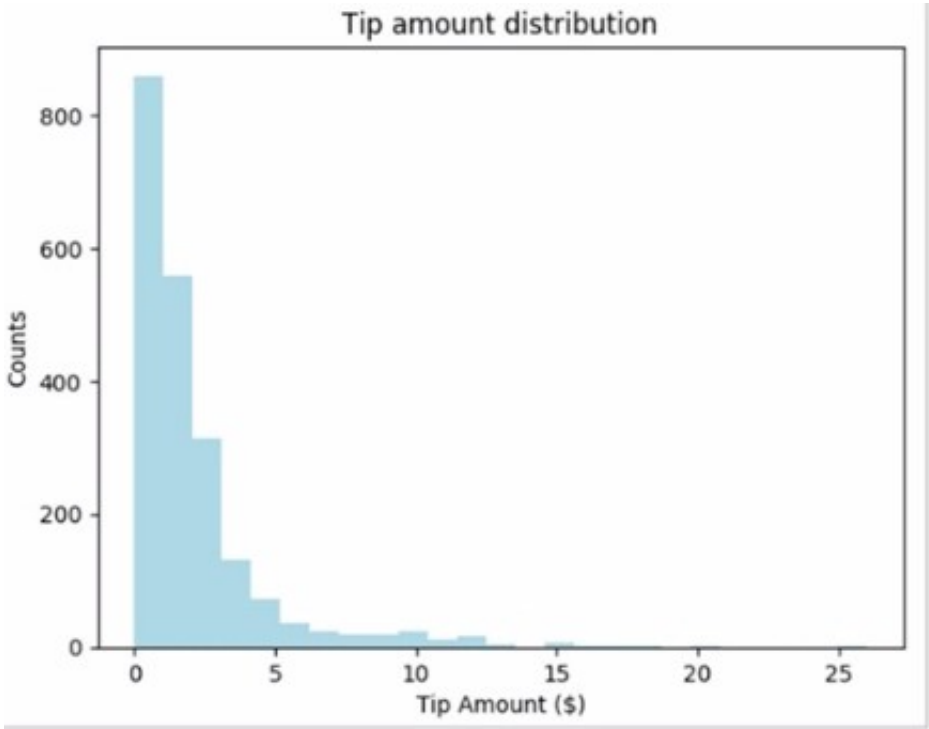
For the PeriodDate that returns the first day of the month for OrderDate, you should use DATEFROMPARTS as it allows you to construct a date from its individual components (year, month, day).
For the DayName that returns the name of the day for OrderDate, you should use DATENAME with the weekday date part to get the full name of the weekday. The complete SQL query should look like this:
SELECT OrderID, CustomerID,
DATEFROMPARTS(YEAR(OrderDate), MONTH(OrderDate), 1) AS PeriodDate, DATENAME(weekday, OrderDate) AS DayName
FROM Sales.Orders
Select DATEFROMPARTS for the PeriodDate and weekday for the DayName in the answer area.

NEW QUESTION 7

- (Topic 2)
You have a Fabric notebook that has the Python code and output shown in the following exhibit.

```
# Look at a histogram of tips by count by using Matplotlib

ax1 = sampled_taxi_pd_df['tipAmount'].plot(kind='hist', bins=25, facecolor='lightblue')
ax1.set_title('Tip amount distribution')
ax1.set_xlabel('Tip Amount ($)')
ax1.set_ylabel('Counts')
plt.suptitle('')
plt.show()
```



Which type of analytics are you performing?

- A. predictive
- B. descriptive
- C. prescriptive
- D. diagnostic

Answer: B

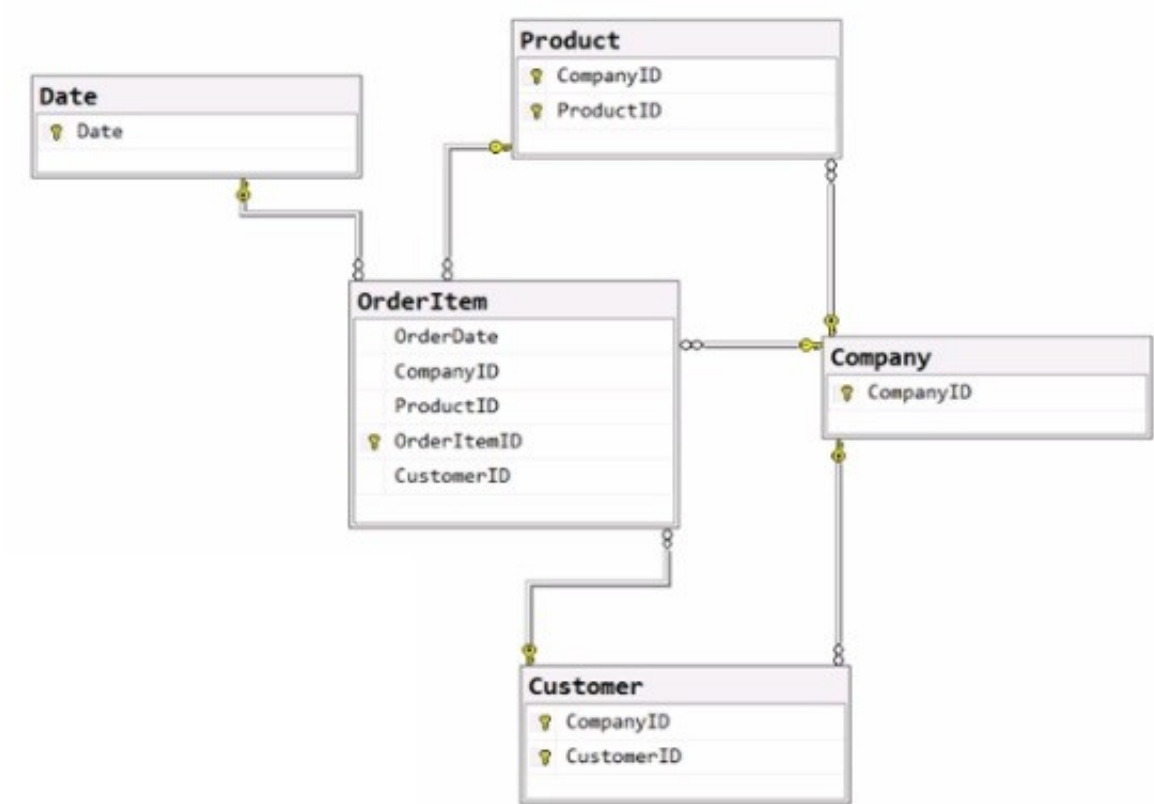
Explanation:

The Python code and output shown in the exhibit display a histogram, which is a representation of the distribution of data. This kind of analysis is descriptive analytics, which is used to describe or summarize the features of a dataset. Descriptive analytics answers the question of "what has happened" by providing insight into past data through tools such as mean, median, mode, standard deviation, and graphical representations like histograms. References: Descriptive analytics and the use of histograms as a way to visualize data distribution are basic concepts in data analysis, often covered in introductory analytics and Python programming resources.

NEW QUESTION 8

HOTSPOT - (Topic 2)

You have the source data model shown in the following exhibit.



The primary keys of the tables are indicated by a key symbol beside the columns involved in each key. You need to create a dimensional data model that will enable the analysis of order items by date, product, and customer. What should you include in the solution? To answer, select the appropriate options in the answer area. NOTE: Each correct selection is worth one point.

Answer Area

The relationship between OrderItem and Product must be based on:

- Both the CompanyID and the ProductID columns
- The ProductID column
- Both the CompanyID and the ProductID columns
- A new key that combines the CompanyID and ProductID columns

The Company entity must be:

- Denormalized into the Customer and Product entities
- Omitted
- Denormalized into the Product entity only
- Denormalized into the Customer and Product entities

- A. Mastered
- B. Not Mastered

Answer: A

Explanation:

? The relationship between OrderItem and Product must be based on: Both the CompanyID and the ProductID columns

? The Company entity must be: Denormalized into the Customer and Product entities

In a dimensional model, the relationships are typically based on foreign key constraints between the fact table (OrderItem) and dimension tables (Product, Customer, Date). Since CompanyID is present in both the OrderItem and Product tables, it acts as a foreign key in the relationship. Similarly, ProductID is a foreign key that relates these two tables. To enable analysis by date, product, and customer, the Company entity would need to be denormalized into the Customer and Product entities to ensure that the relevant company information is available within those dimensions for querying and reporting purposes. References =

? Dimensional modeling

? Star schema design

NEW QUESTION 9

- (Topic 2)

You have a Microsoft Power BI report named Report1 that uses a Fabric semantic model. Users discover that Report1 renders slowly.

You open Performance analyzer and identify that a visual named Orders By Date is the slowest to render. The duration breakdown for Orders By Date is shown in the following table.

Name	Duration (ms)
DAX query	27
Visual display	39
Other	1047

What will provide the greatest reduction in the rendering duration of Report1?

- A. Change the visual type of Orders By Dale.
- B. Enable automatic page refresh.
- C. Optimize the DAX query of Orders By Date by using DAX Studio.
- D. Reduce the number of visuals in Report1.

Answer: C

Explanation:

Based on the duration breakdown provided, the major contributor to the rendering duration is categorized as "Other," which is significantly higher than DAX Query and Visual display times. This suggests that the issue is less likely with the DAX calculation or visual rendering times and more likely related to model performance or the complexity of the visual. However, of the options provided, optimizing the DAX query can be a crucial step, even if "Other" factors are dominant. Using DAX Studio, you can analyze and optimize the DAX queries that power your visuals for performance improvements. Here's how you might proceed:

? Open DAX Studio and connect it to your Power BI report.

? Capture the DAX query generated by the Orders By Date visual.

? Use the Performance Analyzer feature within DAX Studio to analyze the query.

? Look for inefficiencies or long-running operations.

? Optimize the DAX query by simplifying measures, removing unnecessary calculations, or improving iterator functions.

? Test the optimized query to ensure it reduces the overall duration.

References: The use of DAX Studio for query optimization is a common best practice for improving Power BI report performance as outlined in the Power BI documentation.

NEW QUESTION 10

- (Topic 2)

You have a Fabric tenant that contains a machine learning model registered in a Fabric workspace. You need to use the model to generate predictions by using the predict function in a fabric notebook. Which two languages can you use to perform model scoring? Each correct answer presents a complete solution. NOTE: Each correct answer is worth one point.

- A. T-SQL
- B. DAX EC.
- C. Spark SQL
- D. PySpark

Answer: CD

Explanation:

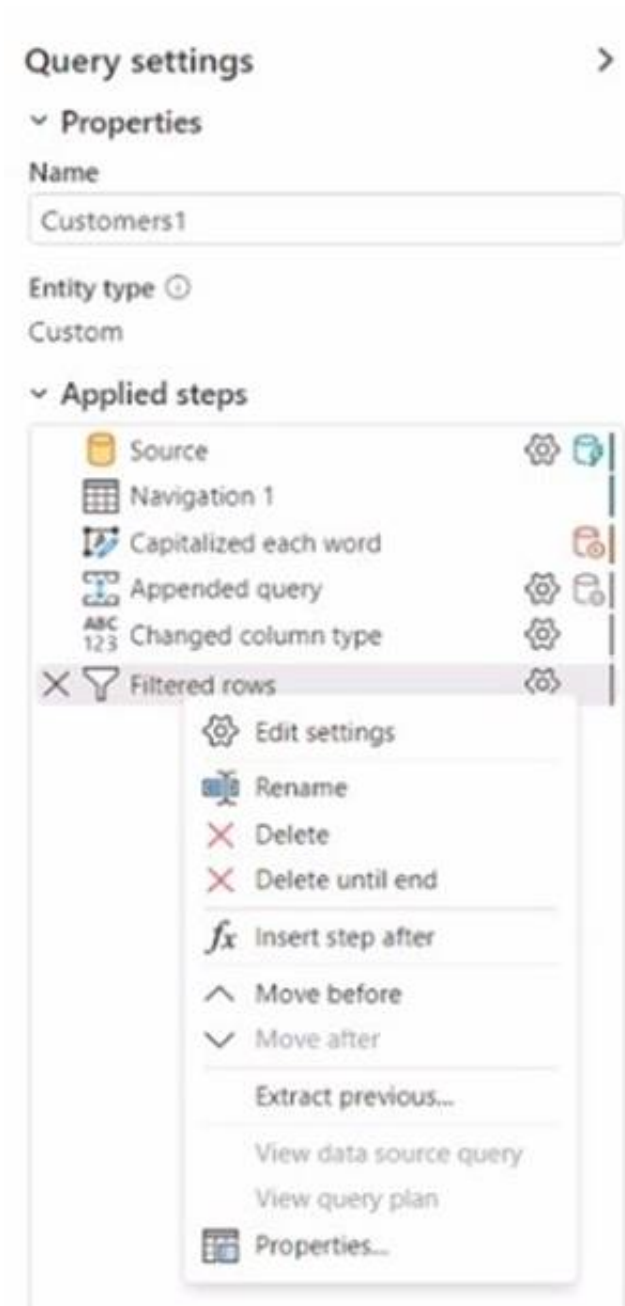
The two languages you can use to perform model scoring in a Fabric notebook using the predict function are Spark SQL (option C) and PySpark (option D). These are both part of the Apache Spark ecosystem and are supported for machine learning tasks in a Fabric environment. References = You can find more information about model scoring and supported languages in the context of Fabric notebooks in the official documentation on Azure Synapse Analytics.

NEW QUESTION 10

HOTSPOT - (Topic 2)

You have a Fabric tenant that contains two lakehouses.

You are building a dataflow that will combine data from the lakehouses. The applied steps from one of the queries in the dataflow is shown in the following exhibit.



Use the drop-down menus to select the answer choice that completes each statement based on the information presented in the graphic. NOTE: Each correct selection is worth one point.

Answer Area

[Answer choice] of the transformation steps in the query will fold.

Some

All

None

Some

The Added custom step will be performed in [answer choice].

the Microsoft Power Query engine

each lakehouse's query engine

the Microsoft Power Query engine

the source lakehouse query engine

- A. Mastered
- B. Not Mastered

Answer: A

Explanation:

Folding in Power Query refers to operations that can be translated into source queries. In this case, "some" of the steps can be folded, which means that some transformations will be executed at the data source level. The steps that cannot be folded will be executed within the Power Query engine. Custom steps, especially those that are not standard query operations, are usually executed within Power Query engine rather than being pushed down to the source system.

References =

- ? Query folding in Power Query
- ? Power Query M formula language

NEW QUESTION 15

- (Topic 2)

You have a Fabric workspace named Workspace1 that contains a data flow named Dataflow1. Dataflow1 contains a query that returns the data shown in the following exhibit.



You need to transform the date columns into attribute-value pairs, where columns become rows. You select the VendorID column.

Which transformation should you select from the context menu of the VendorID column?

- A. Group by
- B. Unpivot columns
- C. Unpivot other columns
- D. Split column
- E. Remove other columns

Answer: B

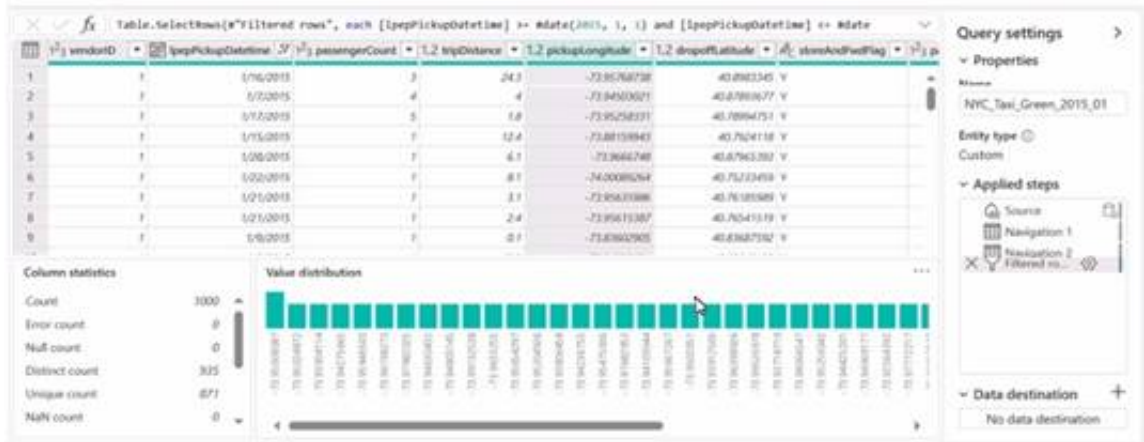
Explanation:

The transformation you should select from the context menu of the VendorID column to transform the date columns into attribute-value pairs, where columns become rows, is Unpivot columns (B). This transformation will turn the selected columns into rows with two new columns, one for the attribute (the original column names) and one for the value (the data from the cells). References = Techniques for unpivoting columns are covered in the Power Query documentation, which explains how to use the transformation in data modeling.

NEW QUESTION 19

- (Topic 2)

You have a Fabric workspace named Workspace 1 that contains a dataflow named Dataflow1. Dataflow1 has a query that returns 2.000 rows. You view the query in Power Query as shown in the following exhibit.



What can you identify about the pickupLongitude column?

- A. The column has duplicate values.
- B. All the table rows are profiled.
- C. The column has missing values.
- D. There are 935 values that occur only once.

Answer: B

Explanation:

The pickupLongitude column has duplicate values. This can be inferred because the 'Distinct count' is 935 while the 'Count' is 1000, indicating that there are repeated values within the column. References = Microsoft Power BI documentation on data profiling could provide further insights into understanding and interpreting column statistics like these.

NEW QUESTION 21

DRAG DROP - (Topic 2)

You are implementing two dimension tables named Customers and Products in a Fabric warehouse. You need to use slowly changing dimension (SCD) to manage the versioning of data. The solution must meet the requirements shown in the following table.

Table	Change action
Customers	Create a new version of the row.
Products	Overwrite the existing value in the latest row.

Which type of SCD should you use for each table? To answer, drag the appropriate SCD types to the correct tables. Each SCD type may be used once, more than once, or not at all. You may need to drag the split bar between panes or scroll to view content.
NOTE: Each correct selection is worth one point.

SCD Types

Type 0

Type 1

Type 2

Type 3

Answer Area

Customers:

Products:

- A. Mastered
- B. Not Mastered

Answer: A

Explanation:

For the Customers table, where the requirement is to create a new version of the row, you would use:
? Type 2 SCD: This type allows for the creation of a new record each time a change occurs, preserving the history of changes over time.
For the Products table, where the requirement is to overwrite the existing value in the latest row, you would use:
? Type 1 SCD: This type updates the record directly, without preserving historical data.

NEW QUESTION 22

- (Topic 2)

You are creating a semantic model in Microsoft Power BI Desktop.

You plan to make bulk changes to the model by using the Tabular Model Definition Language (TMDL) extension for Microsoft Visual Studio Code.

You need to save the semantic model to a file. Which file format should you use?

- A. PBIP
- B. PBIX
- C. PBIT
- D. PBIDS

Answer: B

Explanation:

When saving a semantic model to a file that can be edited using the Tabular Model Scripting Language (TMSL) extension for Visual Studio Code, the PBIX (Power BI Desktop) file format is the correct choice. The PBIX format contains the report, data model, and queries, and is the primary file format for editing in Power BI Desktop. References = Microsoft's documentation on Power BI file formats and Visual Studio Code provides further clarification on the usage of PBIX files.

NEW QUESTION 24

HOTSPOT - (Topic 2)

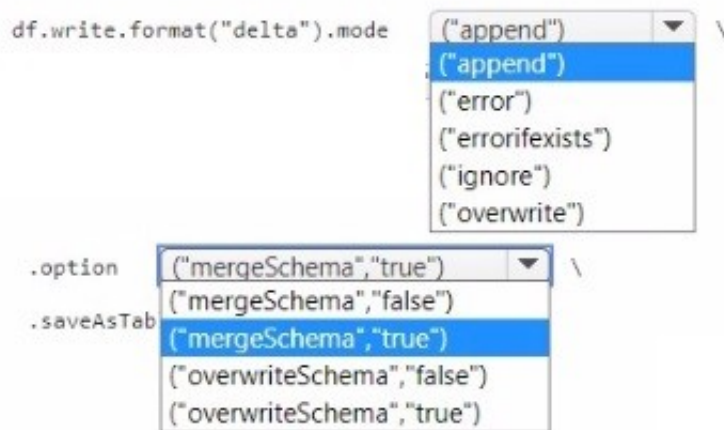
You have a Fabric tenant that contains lakehouse named Lakehouse1. Lakehouse1 contains a Delta table with eight columns. You receive new data that contains the same eight columns and two additional columns.

You create a Spark DataFrame and assign the DataFrame to a variable named df. The DataFrame contains the new data. You need to add the new data to the Delta table to meet the following requirements:

- Keep all the existing rows.
- Ensure that all the new data is added to the table.

How should you complete the code? To answer, select the appropriate options in the answer area.

Answer Area



- A. Mastered
- B. Not Mastered

Answer: A

Explanation:

o add new data to the Delta table while meeting the specified requirements:

? You should use the append mode to ensure that all new data is added to the table without affecting the existing rows.

? You should set the mergeSchema option to true to allow the schema of the Delta table to be updated with the new columns found in the DataFrame.

The completed code would look like this:

```
df.write.format("delta").mode("append") option("mergeSchema", "true") saveAsTable("Lakehouse1.TableName")
```

NEW QUESTION 28

- (Topic 2)

You have a Fabric warehouse that contains a table named Staging.Sales. Staging.Sales contains the following columns.

Name	Data type	Nullable
ProductID	Integer	No
ProductName	Varchar(30)	No
SalesDate	Datetime2(6)	No
WholesalePrice	Decimal(18, 2)	Yes
Amount	Decimal(18, 2)	Yes

You need to write a T-SQL query that will return data for the year 2023 that displays ProductID and ProductName and has a summarized Amount that is higher than 10,000. Which query should you use?

A)

```
SELECT ProductID, ProductName, SUM(Amount) AS TotalAmount
FROM Staging.Sales
WHERE DATEPART(YEAR, SalesDate) = '2023'
GROUP BY ProductID, ProductName
HAVING SUM(Amount) > 10000
```

B)

```
SELECT ProductID, ProductName, SUM(Amount) AS TotalAmount
FROM Staging.Sales
GROUP BY ProductID, ProductName
HAVING DATEPART(YEAR,SaleDate) = '2023' AND SUM(Amount) > 10000
```

C)

```
SELECT ProductID, ProductName, SUM(Amount) AS TotalAmount
FROM Staging.Sales
WHERE DATEPART(YEAR,SaleDate) = '2023' AND SUM(Amount) > 10000
```

D)

```
SELECT ProductID, ProductName, SUM(Amount) AS TotalAmount
FROM Staging.Sales
WHERE DATEPART(YEAR,SaleDate) = '2023'
GROUP BY ProductID, ProductName
HAVING TotalAmount > 10000
```

- A. Option A
- B. Option B
- C. Option C
- D. Option D

Answer: B

Explanation:

The correct query to use in order to return data for the year 2023 that displays ProductID, ProductName, and has a summarized Amount greater than 10,000 is Option B. The reason is that it uses the GROUP BY clause to organize the data by ProductID and ProductName and then filters the result using the HAVING clause to only include groups where the sum of Amount is greater than 10,000. Additionally, the DATEPART(YEAR, SaleDate) = '2023' part of the HAVING clause ensures that only records from the year 2023 are included. References = For more information, please visit the official documentation on T-SQL queries and the GROUP BY clause at T-SQL GROUP BY.

NEW QUESTION 30

- (Topic 2)

You need to provide Power BI developers with access to the pipeline. The solution must meet the following requirements:

- Ensure that the developers can deploy items to the workspaces for Development and Test.
- Prevent the developers from deploying items to the workspace for Production.
- Follow the principle of least privilege.

Which three levels of access should you assign to the developers? Each correct answer presents part of the solution. NOTE: Each correct answer is worth one point.

- A. Build permission to the production semantic models
- B. Admin access to the deployment pipeline
- C. Viewer access to the Development and Test workspaces
- D. Viewer access to the Production workspace
- E. Contributor access to the Development and Test workspaces
- F. Contributor access to the Production workspace

Answer: BDE

Explanation:

To meet the requirements, developers should have Admin access to the deployment pipeline (B), Contributor access to the Development and Test workspaces (E), and Viewer access to the Production workspace (D). This setup ensures they can perform necessary actions in development and test environments without having the ability to affect production. References = The Power BI documentation on workspace access levels and deployment pipelines provides guidelines on assigning appropriate permissions.

NEW QUESTION 34

HOTSPOT - (Topic 2)

You have a Fabric warehouse that contains a table named Sales.Products. Sales.Products contains the following columns.

Name	Data type	Nullable
ProductID	Integer	No
ProductName	Varchar(30)	No
ListPrice	Decimal(18, 2)	No
WholesalePrice	Decimal(18, 2)	Yes
AgentPrice	Decimal(18, 2)	Yes

You need to write a T-SQL query that will return the following columns.

Name	Description
ProductID	Return the ProductID value
HighestSellingPrice	Returns the highest value from ListPrice, WholesalePrice, and AgentPrice
TradePrice	Returns the AgentPrice value if present, otherwise returns the WholesalePrice value if present, otherwise returns the ListPrice value

How should you complete the code? To answer, select the appropriate options in the answer area.

Answer Area

SELECT ProductID,

GREATEST

COALESCE

GREATEST

IIF

MAX

(ListPrice, WholesalePrice, AgentPrice) AS HighestSellingPrice,

FROM Sales.Products

COALESCE

CHOOSE

COALESCE

IIF

MAX

(AgentPrice, WholesalePrice, ListPrice) AS TradePrice

- A. Mastered
- B. Not Mastered

Answer: A

Explanation:

? For the HighestSellingPrice, you should use the GREATEST function to find the highest value from the given price columns. However, T-SQL does not have a GREATEST function as found in some other SQL dialects, so you would typically use a CASE statement or an IIF statement with nested MAX functions. Since neither of those are provided in the options, you should select MAX as a placeholder to indicate the function that would be used to find the highest value if combining multiple MAX functions or a similar logic was available.

? For the TradePrice, you should use the COALESCE function, which returns the first non-null value in a list. The COALESCE function is the correct choice as it will return AgentPrice if it's not null; if AgentPrice is null, it will check WholesalePrice, and if that is also null, it will return ListPrice.

The complete code with the correct SQL functions would look like this:

```
SELECT ProductID,
MAX(ListPrice, WholesalePrice, AgentPrice) AS HighestSellingPrice, -- MAX is used as a placeholder
COALESCE(AgentPrice, WholesalePrice, ListPrice) AS TradePrice FROM Sales.Products
Select MAX for HighestSellingPrice and COALESCE for TradePrice in the answer area.
```

NEW QUESTION 36

.....

Thank You for Trying Our Product

We offer two products:

1st - We have Practice Tests Software with Actual Exam Questions

2nd - Questons and Answers in PDF Format

DP-600 Practice Exam Features:

- * DP-600 Questions and Answers Updated Frequently
- * DP-600 Practice Questions Verified by Expert Senior Certified Staff
- * DP-600 Most Realistic Questions that Guarantee you a Pass on Your FirstTry
- * DP-600 Practice Test Questions in Multiple Choice Formats and Updatesfor 1 Year

100% Actual & Verified — Instant Download, Please Click
[Order The DP-600 Practice Test Here](#)