

300-430 Dumps

Implementing Cisco Enterprise Wireless Networks (ENWLSI)

<https://www.certleader.com/300-430-dumps.html>



NEW QUESTION 1

A wireless engineer must implement a corporate wireless network for a large company in the most efficient way possible. The wireless network must support 32 VLANs for 300 employees in different departments. Which solution must the engineer choose?

- A. Configure a second WLC to support half of the APs in the deployment.
- B. Configure one single SSID and implement Cisco ISE for VLAN assignment according to different user roles.
- C. Configure different AP groups to support different VLANs, so that all of the WLANs can be broadcast on both radios.
- D. Configure 16 WLANs to be broadcast on the 2.4-GHz band and 16 WLANs to be broadcast on the 5.0-GHz band.

Answer: B

NEW QUESTION 2

Which QoS level is recommended for guest services?

- A. gold
- B. bronze
- C. platinum
- D. silver

Answer: B

NEW QUESTION 3

Which command set configures a Cisco Catalyst 9800 Series Wireless Controller so that the client traffic enters the network at the AP switch port?

A.

```
config terminal
wireless profile policy [policy name]
local switching
end
```

B.

```
config terminal
wireless flexconnect policy [policy name]
local switching
end
```

A.

```
config terminal
wireless flexconnect policy [policy name]
no central switching
end
```

B.

```
config terminal
wireless profile policy [policy name]
no central switching
end
```

Answer: B

NEW QUESTION 4

What is the difference between PIM sparse mode and PIM dense mode?

- A. Sparse mode supports only one switch
- B. Dense mode supports multiswitch networks.
- C. Sparse mode flood
- D. Dense mode uses distribution trees.
- E. Sparse mode uses distribution tree
- F. Dense mode floods.
- G. Sparse mode supports multiswitch network
- H. Dense mode supports only one switch.

Answer: C

NEW QUESTION 5

A user is trying to connect to a wireless network that is configured for WPA2-Enterprise security using a corporate laptop. The CA certificate for the authentication server has been installed on the Trusted Root Certification Authorities store on the laptop. The user has been prompted to enter the credentials multiple times, but the authentication has not succeeded. What is causing the issue?

- A. There is an IEEE invalid 802.1X authentication policy on the authentication server.
- B. The user Active Directory account is locked out after several failed attempts.
- C. There is an invalid 802.1X authentication policy on the authenticator.

D. The laptop has not received a valid IP address from the wireless controller.

Answer: C

NEW QUESTION 6

For security purposes, an engineer enables CPU ACL and chooses an ACL on the Security > Access Control Lists > CPU Access Control Lists menu. Which kind of traffic does this change apply to, as soon as the change is made?

- A. wireless traffic only
- B. wired traffic only
- C. VPN traffic
- D. wireless and wired traffic

Answer: A

NEW QUESTION 7

An engineer must implement Cisco Identity-Based Networking Services at a remote site using ISE to dynamically assign groups of users to specific IP subnets. If the subnet assigned to a client is available at the remote site, then traffic must be offloaded locally, and subnets are unavailable at the remote site must be tunneled back to the WLC. Which feature meets these requirements?

- A. learn client IP address
- B. FlexConnect local authentication
- C. VLAN-based central switching
- D. central DHCP processing

Answer: C

NEW QUESTION 8

The IT manager is asking the wireless team to get a report for all guest user associations during the past two weeks. In which two formats can Cisco Prime save this report? (Choose two.)

- A. CSV
- B. PDF
- C. XLS
- D. DOC
- E. plain text

Answer: AB

Explanation:

Reference: https://www.cisco.com/c/en/us/td/docs/net_mgmt/prime/infrastructure/3-2/user/guide/bk_CiscoPrimeInfrastructure_3_2_0_UserGuide/bk_CiscoPrimeInfrastructure_3_2_0_UserGuide_chapter_01010.html

NEW QUESTION 9

Which devices can be tracked with the Cisco Context Aware Services?

- A. wired and wireless devices
- B. wireless devices
- C. wired devices
- D. Cisco certified wireless devices

Answer: A

Explanation:

Reference: <https://www.cisco.com/c/en/us/support/docs/wireless/context-aware-software/110836-cas-faq.html>

NEW QUESTION 10

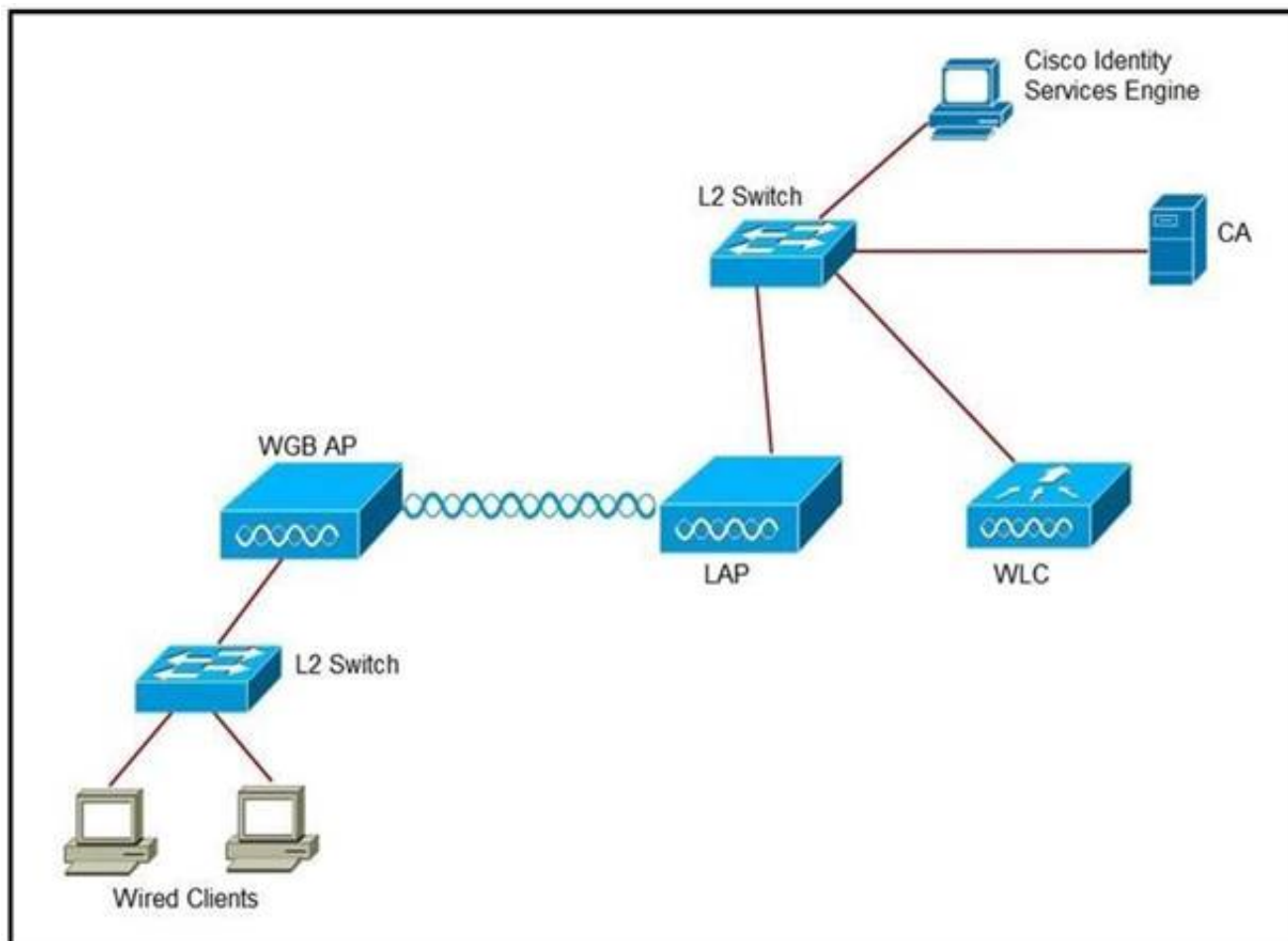
Which two steps are needed to complete integration of the MSE to Cisco Prime Infrastructure and be able to track the location of clients/rogues on maps? (Choose two.)

- A. Synchronize access points with the MSE.
- B. Add the MSE to Cisco Prime Infrastructure using the CLI credentials.
- C. Add the MSE to Cisco Prime Infrastructure using the Cisco Prime Infrastructure communication credentials configured during set up.
- D. Apply a valid license for Wireless Intrusion Prevention System.
- E. Apply a valid license for location tracking.

Answer: DE

NEW QUESTION 10

Refer to the exhibit. An engineer must connect a fork lift via a WGB to a wireless network and must authenticate the WGB certificate against the RADIUS server. Which three steps are required for this configuration? (Choose three.)



- A. Configure the certificate, WLAN, and radio interface on WGB.
- B. Configure the certificate on the WLC.
- C. Configure WLAN to authenticate using ISE.
- D. Configure the access point with the root certificate from ISE.
- E. Configure WGB as a network device in ISE.
- F. Configure a policy on ISE to allow devices to connect that validate the certificate.

Answer: ACF

NEW QUESTION 15

On a branch office deployment, it has been noted that if the FlexConnect AP is in standalone mode and loses connection to the WLC, all clients are disconnected, and the SSID is no longer advertised. Considering that FlexConnect local switching is enabled, which setting is causing this behavior?

- A. ISE NAC is enabled
- B. 802.11r Fast Transition is enabled
- C. Client Exclusion is enabled
- D. FlexConnect Local Auth is disabled

Answer: D

NEW QUESTION 17

An engineer must implement rogue containment for an SSID. What is the maximum number of APs that should be used for containment?

- A. 1
- B. 2
- C. 3
- D. 4

Answer: D

Explanation:

Reference: https://www.cisco.com/c/en/us/td/docs/wireless/technology/roguedetection_deploy/Rogue_Detection.html

NEW QUESTION 18

An engineer configures a Cisco Aironet 600 Series OfficeExtend AP for a user who works remotely. What is configured on the Cisco WLC to allow the user to print a printer on his home network?

- A. split tunneling
- B. SE-connect
- C. FlexConnect
- D. AP failover priority

Answer: A

Explanation:

Reference: <https://www.cisco.com/c/en/us/support/docs/wireless/aironet-602-officeextend-access-point/117540-configure-splittunneloeap-00.html>

NEW QUESTION 21

A customer is experiencing performance issues with its wireless network and asks a wireless engineer to provide information about all sources of interference and

their impacts to the wireless network over the past few days. Where can the requested information be accessed?

- A. CleanAir reports on Cisco Prime Infrastructure
- B. Performance reports on Cisco Prime Infrastructure
- C. Interference Devices reports on Cisco Wireless LAN Controller
- D. Air Quality reports on Cisco Wireless LAN Controller

Answer: A

NEW QUESTION 24

Refer to the exhibit.

No.	Time	Source	Destination	Protocol	Length	Info
1	0.000000	10.48.39.251	10.48.71.21	UDP	162	9999 → 2003 Len=120
2	0.003747	10.48.39.251	10.48.71.21	UDP	146	9999 → 2003 Len=104
3	1.087479	10.48.39.214	10.48.71.21	UDP	130	9999 → 2003 Len=88
4	2.733577	10.48.39.214	10.48.71.21	UDP	130	9999 → 2003 Len=88
5	2.999859	10.48.39.251	10.48.71.21	UDP	178	9999 → 2003 Len=136
6	3.001227	10.48.39.251	10.48.71.21	UDP	162	9999 → 2003 Len=120
7	4.355249	10.48.39.214	10.48.71.21	UDP	146	9999 → 2003 Len=104
8	5.999538	10.48.39.251	10.48.71.21	UDP	178	9999 → 2003 Len=136
9	6.000959	10.48.39.251	10.48.71.21	UDP	146	9999 → 2003 Len=104
10	8.999418	10.48.39.251	10.48.71.21	UDP	146	9999 → 2003 Len=104
11	9.000791	10.48.39.251	10.48.71.21	UDP	178	9999 → 2003 Len=136
12	9.262904	10.48.39.214	10.48.71.21	UDP	146	9999 → 2003 Len=104
13	10.894785	10.48.39.214	10.48.71.21	UDP	130	9999 → 2003 Len=88
14	11.995126	10.48.39.251	10.48.71.21	UDP	194	9999 → 2003 Len=152
15	11.999193	10.48.39.251	10.48.71.21	UDP	162	9999 → 2003 Len=120
16	14.994902	10.48.39.251	10.48.71.21	UDP	178	9999 → 2003 Len=136
17	14.996368	10.48.39.251	10.48.71.21	UDP	162	9999 → 2003 Len=120
18	17.994857	10.48.39.251	10.48.71.21	UDP	146	9999 → 2003 Len=104
19	17.996231	10.48.39.251	10.48.71.21	UDP	162	9999 → 2003 Len=120
20	18.102843	10.48.39.251	10.48.71.21	UDP	130	9999 → 2003 Len=88
21	21.098408	10.48.39.251	10.48.71.21	UDP	146	9999 → 2003 Len=104
22	21.099952	10.48.39.251	10.48.71.21	UDP	162	9999 → 2003 Len=120
23	24.098574	10.48.39.251	10.48.71.21	UDP	146	9999 → 2003 Len=104
24	24.099804	10.48.39.251	10.48.71.21	UDP	162	9999 → 2003 Len=120
25	27.098099	10.48.39.251	10.48.71.21	UDP	162	9999 → 2003 Len=120
26	27.099839	10.48.39.251	10.48.71.21	UDP	130	9999 → 2003 Len=88
27	28.880307	10.48.39.164	10.48.71.21	UDP	146	9999 → 2003 Len=104
28	28.881569	10.48.39.214	10.48.71.21	CAPP	146	CAPP MD5 Encrypted
29	30.094237	10.48.39.251	10.48.71.21	UDP	178	9999 → 2003 Len=136
30	30.097812	10.48.39.251	10.48.71.21	UDP	146	9999 → 2003 Len=104
31	30.513451	10.48.39.214	10.48.71.21	UDP	130	9999 → 2003 Len=88
32	30.515926	10.48.39.164	10.48.71.21	UDP	130	9999 → 2003 Len=88

```
> Frame 1: 162 bytes on wire (1296 bits), 162 bytes captured (1296 bits)
> Ethernet II, Src: CiscInc_2a:c4:a3 (00:06:f6:2a:c4:a3), Dst: Vmware_99:4e:19 (00:50:56:99:4e:19)
> Internet Protocol Version 4, Src: 10.48.39.251, Dst: 10.48.71.21
> User Datagram Protocol, Src Port: 9999 (9999), Dst Port: 2003 (2003)
v Data (120 bytes)
  Data: ae 2f 44 f0 00 00 b4 5f ef 06 fd cb b7 6c 03 c7 ...
  [Length: 120]
```

The image shows a packet capture that was taken at the CLI of the Cisco CMX server. It shows UDP traffic from the WLC coming into the server. What does the capture prove?

- A. The Cisco CMX server receives NetFlow data from the WLC.
- B. The Cisco CMX server receives NMSP traffic from the WLC.
- C. The Cisco CMX server receives SNMP traffic from the WLC.
- D. The Cisco CMX server receives Angle-of-Arrival data from the WLC.

Answer: D

NEW QUESTION 27

CMX Facebook Wi-Fi allows access to the network before authentication. Which two elements are available? (Choose two.)

- A. Allow HTTP traffic only before authentication and block all the traffic.
- B. Allow all the traffic before authentication and intercept HTTPS only.
- C. Allow HTTPs traffic only before authentication and block all other traffic.
- D. Allow all the traffic before authentication and intercept HTTP only.
- E. Allow SNMP traffic only before authentication and block all the traffic.

Answer: CD

Explanation:

Reference: https://www.cisco.com/c/en/us/td/docs/wireless/mse/8-0/CMX_Connect_Engage_Visitor_Connect/Guide/Cisco_CMX_Connect_Engage_Config_Guide_VC/CMX_Facebook_Wi-Fi.html

NEW QUESTION 32

Which three characteristics of a rogue AP pose a high security risk? (Choose three.)

- A. open authentication
- B. high RSSI
- C. foreign SSID
- D. accepts clients
- E. low RSSI
- F. distant location

Answer: ACD

NEW QUESTION 35

Branch wireless users report that they can no longer access services from head office but can access services locally at the site. New wireless users can associate to the wireless while the WAN is down. Which three elements (Cisco FlexConnect state, operation mode, and authentication method) are seen in this scenario? (Choose three.)

- A. authentication-local/switch-local
- B. WPA2 personal
- C. authentication-central/switch-central
- D. lightweight mode
- E. standalone mode
- F. WEB authentication

Answer: ABE

NEW QUESTION 39

An engineer configured a Cisco AireOS controller with two TACACS+ servers. The engineer notices that when the primary TACACS+ server fails, the WLC starts using the secondary server as expected, but the WLC does not use the primary server again until the secondary server fails or the controller is rebooted. Which cause of this issue is true?

- A. Fallback is enabled
- B. Fallback is disabled
- C. DNS query is disabled
- D. DNS query is enabled

Answer: B

NEW QUESTION 44

A Cisco WLC has been added to the network and Cisco ISE as a network device, but authentication is failing. Which configuration within the network device configuration should be verified?

- A. SNMP RO community
- B. device interface credentials
- C. device ID
- D. shared secret

Answer: D

NEW QUESTION 48

.....

Thank You for Trying Our Product

* 100% Pass or Money Back

All our products come with a 90-day Money Back Guarantee.

* One year free update

You can enjoy free update one year. 24x7 online support.

* Trusted by Millions

We currently serve more than 30,000,000 customers.

* Shop Securely

All transactions are protected by VeriSign!

100% Pass Your 300-430 Exam with Our Prep Materials Via below:

<https://www.certleader.com/300-430-dumps.html>