

Exam Questions 1Z0-071

Oracle Database 12c SQL

<https://www.2passeasy.com/dumps/1Z0-071/>



NEW QUESTION 1

In which normal form is a table, if it has no multi-valued attributes and no partial dependencies?

- A. second normal form
- B. first normal form
- C. third normal form
- D. fourth normal form

Answer: A

Explanation:

References:

<https://blog.udemy.com/database-normal-forms/>

NEW QUESTION 2

You must write a query that prompts users for column names and conditions every time it is executed. (Choose the best answer.)
The user must be prompted only once for the table name. Which statement achieves those objectives?

- A. `SELECT &col1, '&col2'FROM &tableWHERE &&condition = '&cond';`
- B. `SELECT &col1, &col2 FROM "&table"WHERE &condition =&cond;`
- C. `SELECT &col1, &col2 FROM &&tableWHERE &condition = &cond;`
- D. `SELECT &col1, &col2 FROM &&tableWHERE &condition = &&cond`

Answer: C

NEW QUESTION 3

You issue this command which succeeds: `SQL> DROP TABLE products;`
Which three statements are true?

- A. All existing views and synonyms that refer to the table are invalidated but retained.
- B. Any uncommitted transaction in the session is committed.
- C. Table data and the table structure are deleted.
- D. All the table's indexes if any exist, are invalidated but retained.
- E. Table data is deleted but the table structure is retained.

Answer: BCD

NEW QUESTION 4

You are designing the structure of a table in which two columns have the specifications:

COMPONENT_ID – must be able to contain a maximum of 12 alphanumeric characters and uniquely identify the row

EXECUTION_DATETIME – contains Century, Year, Month, Day, Hour, Minute, Second to the maximum precision and is used for calculations and comparisons between components.

Which two options define the data types that satisfy these requirements most efficiently?

- A. The EXECUTION_DATETIME must be of INTERVAL DAY TO SECOND data type.
- B. The EXECUTION_DATETIME must be of TIMESTAMP data type.
- C. The EXECUTION_DATETIME must be of DATE data type.
- D. The COMPONENT_ID must be of ROWID data type.
- E. The COMPONENT_ID must be of VARCHAR2 data type.
- F. The COMPONENT_ID column must be of CHAR data type.

Answer: CF

NEW QUESTION 5

View the Exhibit and examine the details of the PRODUCT_INFORMATION table.

PRODUCT_NAME	CATEGORY_ID	SUPPLIER_ID
Inkjet C/8/HQ	12	102094
Inkjet C/4	12	102090
LaserPro 600/6/BW	12	102087
LaserPro 1200/8/BW	12	102099
Inkjet B/6	12	102096
Industrial 700/HD	12	102086
Industrial 600/DQ	12	102088
Compact 400/LQ	12	102087
Compact 400/DQ	12	102088
HD 12GB /R	13	102090
HD 10GB /I	13	102071
HD 12GB @7200 /SE	13	102057
HD 18.2GB @10000 /E	13	102078
HD 18.2GB@10000 /I	13	102050
HD 18GB /SE	13	102083
HD 6GB /I	13	102072
HD 8.2GB @5400	13	102093

You have the requirement to display PRODUCT_NAME and LIST_PRICE from the table where the CATEGORY_ID column has values 12 or 13, and the SUPPLIER_ID column has the value 102088. You executed the following SQL statement:

```
SELECT product_name, list_price FROM product_information
```

WHERE (category_id = 12 AND category_id = 13) AND supplier_id = 102088; Which statement is true regarding the execution of the query?

- A. It would not execute because the entire WHERE clause is not enclosed within parentheses.
- B. It would execute but would return no rows.
- C. It would not execute because the same column has been used twice with the AND logical operator.
- D. It would execute and return the desired.

Answer: B

NEW QUESTION 6

Evaluate the following ALTER TABLE statement:

```
ALTER TABLE orders
```

```
SET UNUSED (order_date); Which statement is true?
```

- A. After executing the ALTER TABLE command, you can add a new column called ORDER_DATE to the ORDERS table.
- B. The ORDER_DATE column should be empty for the ALTER TABLE command to execute successfully.
- C. ROLLBACK can be used to get back the ORDER_DATE column in the ORDERS table.
- D. The DESCRIBE command would still display the ORDER_DATE column.

Answer: A

NEW QUESTION 7

View the exhibit and examine the structure of the CUSTOMERS table.

Table CUSTOMERS		
Name	Null?	Type
CUST_ID	NOT NULL	NUMBER
CUST_FIRST_NAME	NOT NULL	VARCHAR2 (20)
CUST_LAST_NAME	NOT NULL	VARCHAR2 (40)
CUST_GENDER	NOT NULL	CHAR (1)
CUST_YEAR_OF_BIRTH	NOT NULL	NUMBER (4)
CUST_MARITAL_STATUS		VARCHAR2 (20)
CUST_STREET_ADDRESS	NOT NULL	VARCHAR2 (40)
CUST_POSTAL_CODE	NOT NULL	VARCHAR2 (10)
CUST_CITY	NOT NULL	VARCHAR2 (30)
CUST_STATE_PROVINCE	NOT NULL	VARCHAR2 (40)
COUNTRY_ID	NOT NULL	NUMBER
CUST_INCOME_LEVEL		VARCHAR2 (30)
CUST_CREDIT_LIMIT		NUMBER
CUST_EMAIL		VARCHAR2 (30)

Which two tasks would require subqueries or joins to be executed in a single statement?

- A. finding the number of customers, in each city, whose credit limit is more than the average credit limit of all the customers
- B. finding the average credit limit of male customers residing in 'Tokyo' or 'Sydney'
- C. listing of customers who do not have a credit limit and were born before 1980
- D. finding the number of customers, in each city, who's marital status is 'married'.
- E. listing of those customers, whose credit limit is the same as the credit limit of customers residing in the city 'Tokyo'.

Answer: AE

NEW QUESTION 8

Which two statements are true regarding constraints?

- A. A foreign key column cannot contain null values.
- B. A column with the UNIQUE constraint can contain null values.
- C. A constraint is enforced only for INSERT operation on the table.
- D. A constraint can be disabled even if the constraint column contains data.
- E. All constraints can be defined at the column level and at the table level.

Answer: BD

NEW QUESTION 9

View the exhibit for the structure of the STUDENT and FACULTY tables. STUDENT

NameNull?Type

----- STUDENT_IDNOT NULLNUMBER(2) STUDENT_NAMEVARCHAR2(20) FACULTY_IDVARCHAR2(2)

LOCATION_IDNUMBER(2) FACULTY

NameNull?Type

----- FACULTY_IDNOT NULLNUMBER(2) FACULTY_NAMEVARCHAR2(20) LOCATION_IDNUMBER(2)

You need to display the faculty name followed by the number of students handled by the faculty at the base location.

Examine the following two SQL statements: Statement 1

SQL>SELECT faculty_name, COUNT(student_id) FROM student JOIN faculty

USING (faculty_id, location_id) GROUP BY faculty_name; Statement 2

SQL>SELECT faculty_name, COUNT(student_id)

FROM student NATURAL JOIN faculty GROUP BY faculty_name;

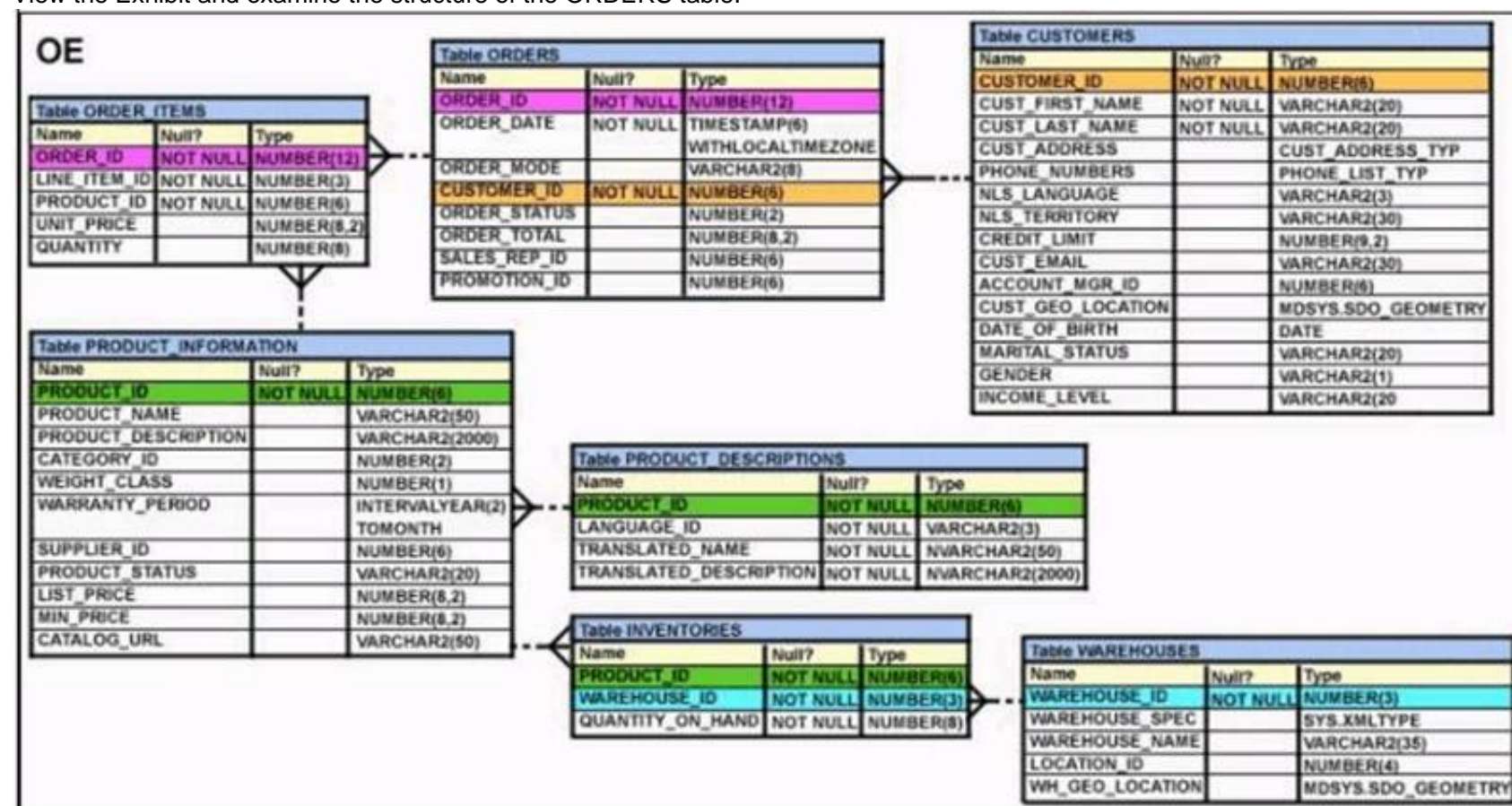
Which statement is true regarding the outcome?

- A. Only statement 2 executes successfully and gives the required result.
- B. Only statement 1 executes successfully and gives the required result.
- C. Both statements 1 and 2 execute successfully and give different results.
- D. Both statements 1 and 2 execute successfully and give the same required result.

Answer: B

NEW QUESTION 10

View the Exhibit and examine the structure of the ORDERS table.



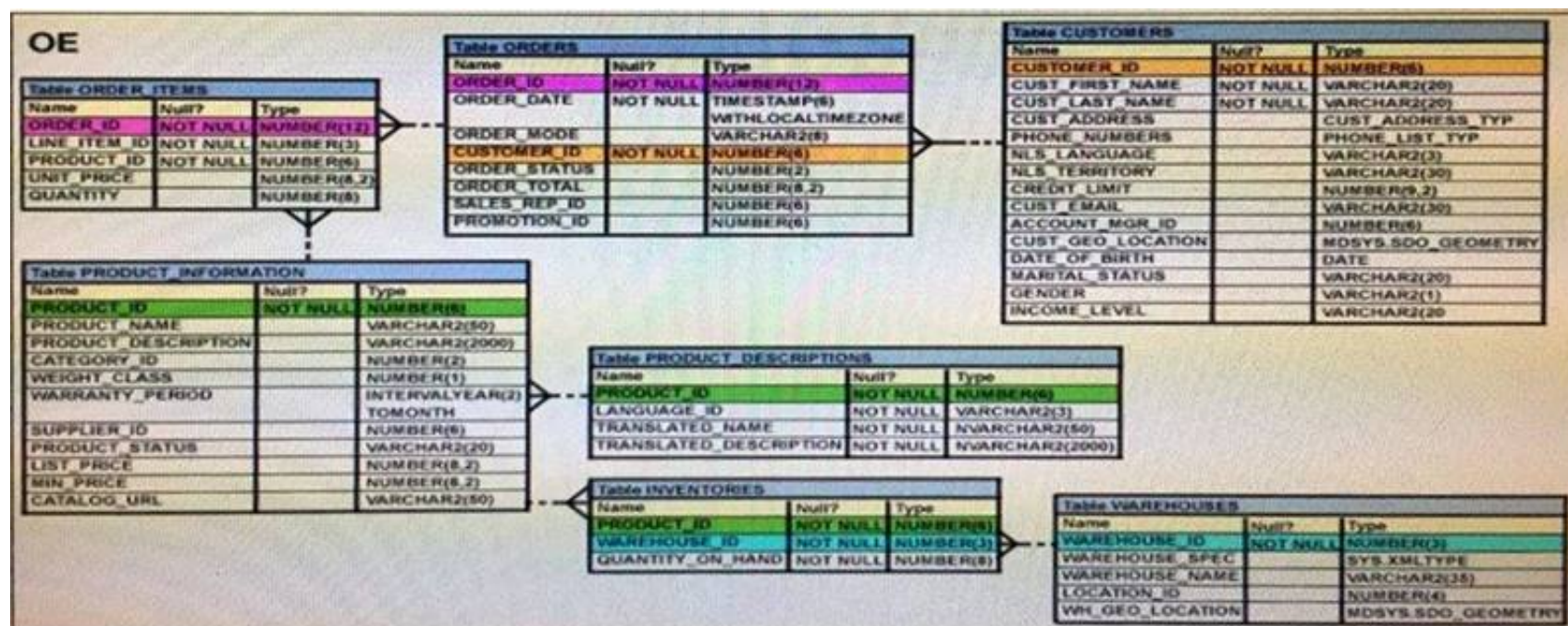
Which UPDATE statement is valid?

- A. UPDATE ordersSET order_date = '12-mar-2007',order_total IS NULLWHERE order_id = 2455;
- B. UPDATE ordersSET order_date = '12-mar-2007',AND order_total = TO_NUMBER(NULL)WHERE order_id = 2455;
- C. UPDATE ordersSET order_date = '12-mar-2007',order_total = NULLWHERE order_id = 2455;
- D. UPDATE ordersSET order_date = TO_DATE('12-mar-2007','dd-mon-yyyy'),SET order_total = TO_NUMBER (NULL)WHERE order_id = 2455;

Answer: C

NEW QUESTION 10

View the exhibit and examine the description of the PRODUCT_INFORMATION table.



Which SQL statement would retrieve from the table the number of products having LIST_PRICE as NULL?

- A. SELECT COUNT (DISTINCT list_price)FROM product_informationWHERE list_price is NULL
- B. SELECT COUNT (NVL(list_price, 0))FROM product_informationWHERE list_price is NULL
- C. SELECT COUNT (list_price)FROM product_informationWHERE list_price != NULL
- D. SELECT COUNT (list_price)FROM product_informationWHERE list_price is NULL

Answer: B

NEW QUESTION 15

Evaluate the following SQL statement:

SQL> select cust_id, cust_last_name "Last name" FROM customers

WHERE country_id = 10 UNION

SELECT cust_id CUST_NO, cust_last_name FROM customers

WHERE country_id = 30

Identify three ORDER BY clauses either one of which can complete the query.

- A. ORDER BY "Last name"
- B. ORDER BY 2, cust_id
- C. ORDER BY CUST_NO
- D. ORDER BY 2, 1
- E. ORDER BY "CUST_NO"

Answer: ABD

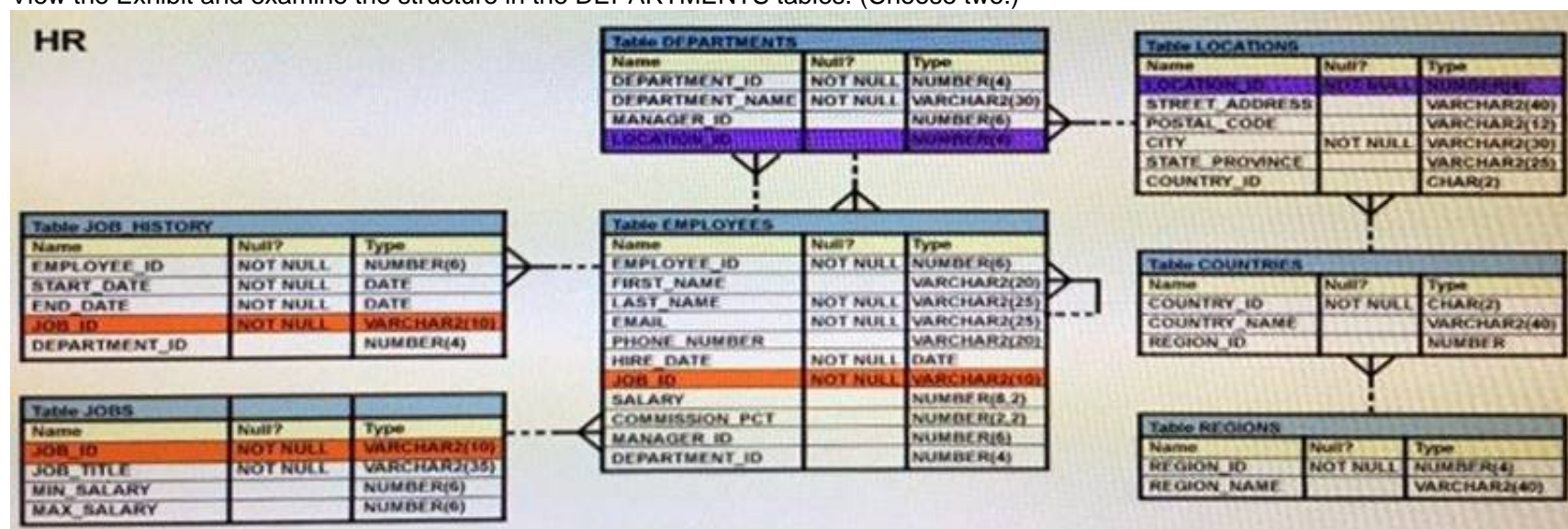
Explanation:

Using the ORDER BY Clause in Set Operations

- The ORDER BY clause can appear only once at the end of the compound query.
- Component queries cannot have individual ORDER BY clauses.
- The ORDER BY clause recognizes only the columns of the first SELECT query.
- By default, the first column of the first SELECT query is used to sort the output in an ascending order.

NEW QUESTION 18

View the Exhibit and examine the structure in the DEPARTMENTS tables. (Choose two.)



Examine this SQL statement:

SELECT department_id "DEPT_ID", department_name, 'b' FROM departments

WHERE departments_id=90 UNION

SELECT department_id, department_name DEPT_NAME, 'a' FROM departments

WHERE department_id=10

Which two ORDER BY clauses can be used to sort output?

- A. ORDER BY DEPT_NAME;
- B. ORDER BY DEPT_ID;
- C. ORDER BY 'b';

D. ORDER BY 3;

Answer: BD

NEW QUESTION 21

A subquery is called a single-row subquery when .

- A. There is only one subquery in the outer query and the inner query returns one or more values
- B. The inner query returns a single value to the outer query.
- C. The inner query uses an aggregating function and returns one or more values.
- D. The inner query returns one or more values and the outer query returns a single value.

Answer: B

NEW QUESTION 25

Which statement is true about transactions?

- A. A set of Data Manipulation Language (DML) statements executed in a sequence ending with a SAVEPOINT forms a single transaction.
- B. Each Data Definition Language (DDL) statement executed forms a single transaction.
- C. A set of DDL statements executed in a sequence ending with a COMMIT forms a single transaction.
- D. A combination of DDL and DML statements executed in a sequence ending with a COMMIT forms a single transaction.

Answer: B

Explanation:

References:

<https://docs.oracle.com/database/121/CNCPT/transact.htm#CNCPT038>

NEW QUESTION 27

Which statement is true about Enterprise Manager (EM) express in Oracle Database 12c?

- A. By default, EM express is available for a database after database creation.
- B. You can use EM express to manage multiple databases running on the same server.
- C. You can perform basic administrative tasks for pluggable databases by using the EM express interface.
- D. You cannot start up or shut down a database Instance by using EM express.
- E. You can create and configure pluggable databases by using EM express.

Answer: A

NEW QUESTION 30

View the Exhibit and examine the structure of the SALES and PRODUCTS tables. (Choose two.)

SALES

Name	Null?	Type
PROD_ID	NOT NULL	NUMBER (3)
CUST_ID	NOT NULL	NUMBER (4)
TIME_ID		DATE
QTY_SOLD		NUMBER (10,2)

PRODUCTS

Name	Null?	Type
PROD_ID	NOT NULL	NUMBER (3)
PROD_NAME		VARCHAR2 (30)
PROD_LIST_PRICE		NUMBER (8,2)

In the SALES table, PROD_ID is the foreign key referencing PROD_ID in the PRODUCTS table. You must list each product ID and the number of times it has been sold.

Examine this query which is missing a JOIN operator: SQL > SELECT p.prod_id, count(s.prod_id)
 FROM products p sales s ON p.prod_id = s.prod_id
 GROUP BY p.prod_id;

Which two JOIN operations can be used to obtain the required output?

- A. FULL OUTER JOIN
- B. JOIN
- C. LEFT OUTER JOIN
- D. RIGHT OUTER JOIN

Answer: AC

NEW QUESTION 35

Which two statements are true regarding the EXISTS operator used in the correlated subqueries? (Choose two.)

- A. The outer query stops evaluating the result set of the inner query when the first value is found.
- B. It is used to test whether the values retrieved by the inner query exist in the result of the outer query.
- C. It is used to test whether the values retrieved by the outer query exist in the result set of the inner query.
- D. The outer query continues evaluating the result set of the inner query until all the values in the result set are processed.

Answer: AC

Explanation:

References:

<http://www.techonthenet.com/oracle/exists.php>

NEW QUESTION 37

Which three tasks can be performed using SQL functions built into Oracle Database?

- A. displaying a date in a nondefault format
- B. finding the number of characters in an expression
- C. substituting a character string in a text expression with a specified string
- D. combining more than two columns or expressions into a single column in the output

Answer: ABC

NEW QUESTION 38

You need to display the date 11-oct-2007 in words as 'Eleventh of October, Two Thousand Seven'. Which SQL statement would give the required result?

- A. SELECT TO_CHAR (TO_DATE ('11-oct-2007'), 'fmDdthsp "of" Month, Year')FROM DUAL
- B. SELECT TO_CHAR ('11-oct-2007', 'fmDdsph "of" Month, Year')FROM DUAL
- C. SELECT TO_CHAR (TO_DATE ('11-oct-2007'), 'fmDdsph of month, year')FROM DUAL
- D. SELECT TO_DATE (TO_CHAR ('11-oct-2007'), 'fmDdsph "of" Month, Year'))FROM DUAL

Answer: C

NEW QUESTION 42

Examine the SQL statement used to create the TRANSACTION table. (Choose the best answer.)

SQL > CREATE TABLE transaction (trn_id char(2) primary key,
 Start_date date DEFAULT SYSDATE, End_date date NOT NULL);
 The value 'A1' does not exist for trn_id in this table.

Which SQL statement successfully inserts a row into the table with the default value for START_DATE?

- A. INSERT INTO transaction VALUES ('A1', DEFAULT, TO_DATE(DEFAULT+10))
- B. INSERT INTO transaction VALUES ('A1', DEFAULT, TO_DATE('SYSDATE+10'))
- C. INSERT INTO transaction (trn_id, end_date) VALUES ('A1', '10-DEC-2014')
- D. INSERT INTO transaction (trn_id, start_date, end_date) VALUES ('A1', , '10-DEC-2014')

Answer: C

NEW QUESTION 46

Examine the structure proposed for the TRANSACTIONS table:

Name	Null?	Type
-----	-----	-----
TRANS_ID	NOT NULL	NUMBER (6)
CUST_NAME	NOT NULL	VARCHAR2 (20)
CUST_STATUS	NOT NULL	VARCHAR2
TRANS_DATE	NOT NULL	DATE
TRANS_VALIDITY		INTERVAL DAY TO SECOND
CUST_CREDIT_VALUE		NUMBER (10)

Which two statements are true regarding the storage of data in the above table structure? (Choose two.)

- A. The CUST_CREDIT_VALUE column would allow storage of positive and negative integers.
- B. The TRANS_VALIDITY column would allow storage of a time interval in days, hours, minutes, and seconds.
- C. The CUST_STATUS column would allow storage of data up to the maximum VARCHAR2 size of 4,000 characters.
- D. The TRANS_DATE column would allow storage of dates only in the dd-mon-yyyy format.

Answer: AB

NEW QUESTION 49

You execute the SQL statement: SQL> CREATE TABLE citizens

(citizen_id CHAR (10) PRIMARY KEY, last_name VARCHAR2 (50) NOT NULL, first_name VARCHAR2 (50),

address VARCHAR2 (100),
city VARCHAR2 (30) DEFAULT 'SEATTLE' NOT NULL,
CONSTRAINT cnames CHECK (first_name<>last_name)); What is the outcome?

- A. It fails because the NOT NULL and DEFAULT options cannot be combined for the same column.
- B. It succeeds and CITY can contain only 'SEATTLE' or null for all rows.
- C. It fails because the condition for the CANAMES constraint is not valid.
- D. It succeeds and an index is crated for CITIZEN_ID.

Answer: A

NEW QUESTION 54

n the customers table, the CUST_CITY column contains the value 'Paris' for the CUST_FIRST_NAME 'Abigail'. Evaluate the following query:

```
SQL> SELECT INITCAP(cust_first_name || ' ' ||  
                UPPER(SUBSTR(cust_city,-LENGTH(cust_city),2)))  
        FROM customers  
        WHERE cust_first_name = 'Abigail';
```

What would be the outcome?

- A. Abigail PA
- B. Abigail Pa
- C. Abigail IS
- D. An error message

Answer: B

NEW QUESTION 58

Which statement is true regarding the INTERSECT operator?

- A. The names of columns in all SELECT statements must be identical.
- B. It ignores NULL values.
- C. Reversing the order of the intersected tables alters the result.
- D. The number of columns and data types must be identical for all SELECT statements in the query.

Answer: D

Explanation:

INTERSECT Returns only the rows that occur in both queries' result sets, sorting them and removing duplicates.

The columns in the queries that make up a compound query can have different names, but the output result set will use the names of the columns in the first query.

References:

<http://oraclexpert.com/using-the-set-operators/>

NEW QUESTION 59

Which two statements are true regarding constraints?

- A. A table can have only one primary key and one foreign key.
- B. A table can have only one primary key but multiple foreign keys.
- C. Only the primary key can be defined at the column and table levels.
- D. The foreign key and parent table primary key must have the same name.
- E. Both primary key and foreign key constraints can be defined at both column and table levels.

Answer: BE

NEW QUESTION 64

Which three statements are true about multiple-row subqueries?

- A. They can contain a subquery within a subquery.
- B. They can return multiple columns as well as rows.
- C. They cannot contain a subquery within a subquery.
- D. They can return only one column but multiple rows.
- E. They can contain group functions and GROUP BY and HAVING clauses.
- F. They can contain group functions and the GROUP BY clause, but not the HAVING clause.

Answer: ABE

NEW QUESTION 69

Examine the following query:

```
SQL> SELECT prod_id, amount_sold FROM sales  
ORDER BY amount_sold  
FETCH FIRST 5 PERCENT ROWS ONLY;
```

What is the output of this query?

- A. It displays 5 percent of the products with the highest amount sold.

- B. It displays the first 5 percent of the rows from the SALES table.
- C. It displays 5 percent of the products with the lowest amount sold.
- D. It results in an error because the ORDER BY clause should be the last clause.

Answer: C

Explanation:

References:

<https://oracle-base.com/articles/12c/row-limiting-clause-for-top-n-queries-12cr1>

NEW QUESTION 72

Which two statements are true regarding constraints? (Choose two.)

- A. A constraint is enforced only for an INSERT operation on a table.
- B. A foreign key cannot contain NULL values.
- C. The column with a UNIQUE constraint can store NULLS.
- D. You can have more than one column in a table as part of a primary key.

Answer: CD

NEW QUESTION 75

Examine the structure of the ORDERS table: (Choose the best answer.)

NAME	NULL	TYPE
ORDER_ID	NOT NULL	NUMBER (12)
ORDER_DATE	NOT NULL	TIMESTAMP(6)
CUSTOMERS_ID	NOT NULL	NUMBER(6)
ORDER_STATUS		NUMBER(2)
ORDER_TOTAL		NUMBER(8, 2)

You want to find the total value of all the orders for each year and issue this command:

```
SQL> SELECT TO_CHAR(order_date,'rr'), SUM(order_total) FROM orders GROUP BY TO_CHAR(order_date, 'yyyy');
```

Which statement is true regarding the result?

- A. It executes successfully but does not give the correct output.
- B. It executes successfully but gives the correct output.
- C. It returns an error because the TO_CHAR function is not valid.
- D. It return an error because the datatype conversion in the SELECT list does not match the data type conversion in the GROUP BY clause.

Answer: D

NEW QUESTION 76

Examine the structure of the BOOKS_ TRANSACTIONS table:

Name	Null?	Type
TRANSACTION_ID	NOT NULL	VARCHAR2 (6)
TRANSACTION_TYPE		VARCHAR2 (3)
BORROWED_DATE		DATE
DUE_DATE		DATE
BOOK_ID		VARCHAR2 (6)
MEMBER_ID		VARCHAR2 (6)

Examine the SQL statement:

```
SQL> SELECT * FROM books_transactions WHERE borrowed_date<SYSDATE AND transaction_type='RM' OR MEMBER_ID IN ('A101', 'A102');
```

Which statement is true about the outcome?

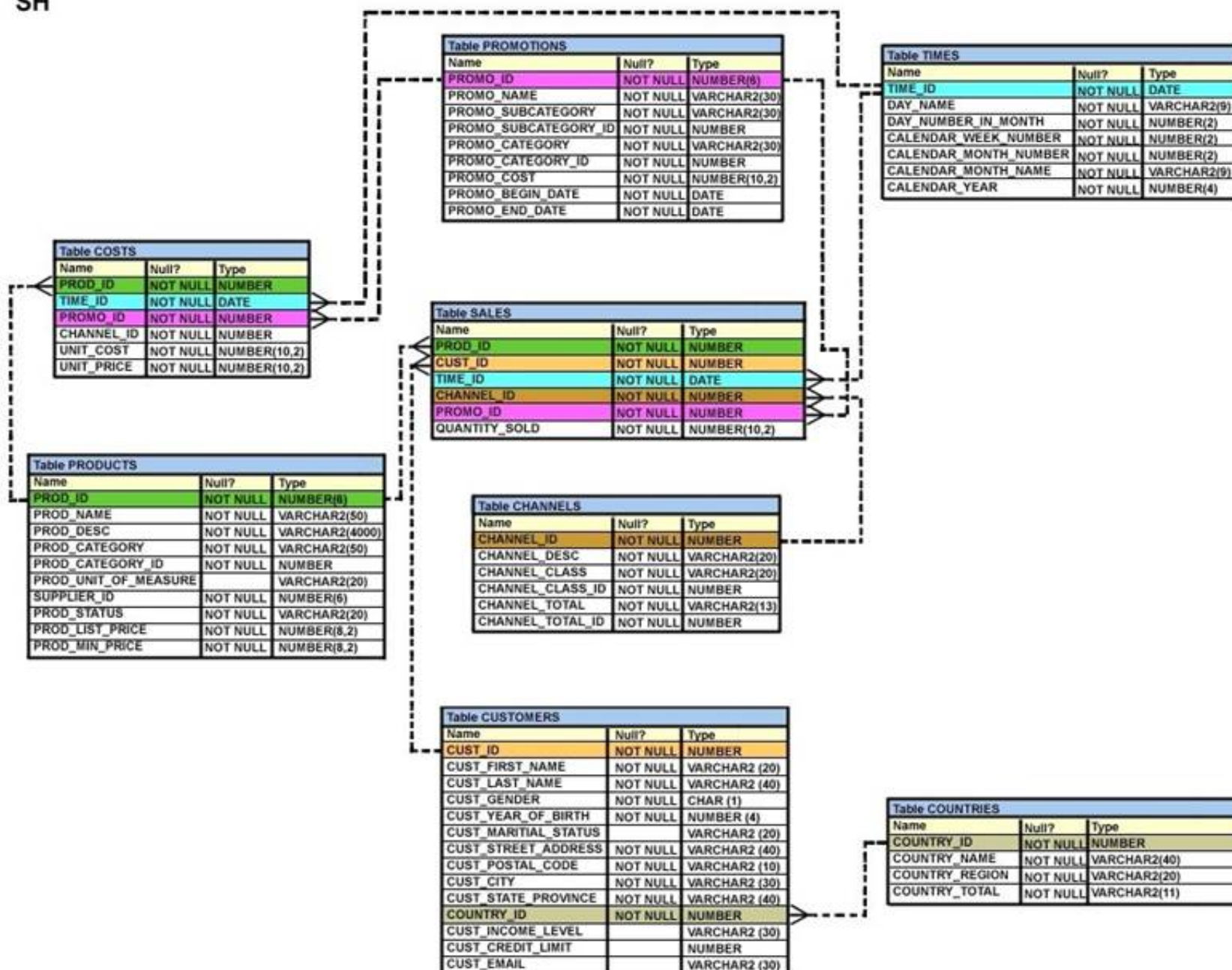
- A. It displays details only for members who have borrowed before today with RM as TRANSACTION_TYPE.
- B. It displays details for members who have borrowed before today's date with either RM as TRANSACTION_TYPE or MEMBER_ID as A101 and A102.
- C. It displays details for only members A101 and A102 who have borrowed before today with RM as TRANSACTION_TYPE.
- D. It displays details for members who have borrowed before today with RM as TRANSACTION_TYPE and the details for members A101 or A102.

Answer: A

NEW QUESTION 78

View the exhibit and examine the structure of the SALES, CUSTOMERS, PRODUCTS and TIMES tables.

SH



The PROD_ID column is the foreign key in the SALES tables, which references the PRODUCTS table.

Similarly, the CUST_ID and TIME_ID columns are also foreign keys in the SALES table referencing the CUSTOMERS and TIMES tables, respectively.

Evaluate the following CREATE TABLE command:

```
CREATE TABLE new_sales (prod_id, cust_id, order_date DEFAULT SYSDATE)
```

AS

```
SELECT prod_id, cust_id, time_id FROM sales;
```

Which statement is true regarding the above command?

- A. The NEW_SALES table would get created and all the NOT NULL constraints defined on the specified columns would be passed to the new table.
- B. The NEW_SALES table would not get created because the DEFAULT value cannot be specified in the column definition.
- C. The NEW_SALES table would not get created because the column names in the CREATE TABLE command and the SELECT clause do not match.
- D. The NEW_SALES table would get created and all the FOREIGN KEY constraints defined on the specified columns would be passed to the new table.

Answer: A

NEW QUESTION 83

Which two statements are true regarding constraints? (Choose two.)

- A. All constraints can be defined at the column level and at the table level.
- B. A constraint can be disabled even if the constraint column contains data.
- C. A column with the UNIQUE constraint can contain NULLS.
- D. A foreign key column cannot contain NULLS.
- E. A constraint is enforced only for INSERT operations.

Answer: BC

NEW QUESTION 88

You issue the following command to drop the PRODUCTS table: (Choose all that apply.) SQL > DROP TABLE products;

Which three statements are true about the implication of this command?

- A. All data along with the table structure is deleted.
- B. A pending transaction in the session is committed.
- C. All indexes on the table remain but they are invalidated.
- D. All views and synonyms on the table remain but they are invalidated.
- E. All data in the table is deleted but the table structure remains.

Answer: ABD

NEW QUESTION 89

Examine the structure of the MEMBERS table: (Choose the best answer.)

NAME	NULL?	TYPE
MEMBER_ID	NOT NULL	NUMBER(6)
FIRST_NAME		VARCHAR2(50)
LAST_NAME	NOT NULL	VARCHAR2(50)
ADDRESS		VARCHAR2(50)
CITY		VARCHAR2(25)
STATE		VARCHAR2(3)

Examine the SQL statement:

SQL > SELECT city, last_name LNAME FROM MEMBERS ORDER BY 1, LNAME DESC;

What would be the result execution?

- A. It displays all cities in descending order, within which the last names are further sorted in descending order.
- B. It fails because a column alias cannot be used in the ORDER BY clause.
- C. It fails because a column number and a column alias cannot be used together in the ORDER BY clause.
- D. It displays all cities in ascending order, within which the last names are further sorted in descending order.

Answer: D

NEW QUESTION 90

The user SCOTT who is the owner of ORDERS and ORDER_ITEMS tables issues the following GRANT command:

GRANT ALL

ON orders, order_items TO PUBLIC;

What correction needs to be done to the above statement?

- A. PUBLIC should be replaced with specific usernames.
- B. ALL should be replaced with a list of specific privileges.
- C. WITH GRANT OPTION should be added to the statement.
- D. Separate GRANT statements are required for ORDERS and ORDER_ITEMS tables.

Answer: D

Explanation:

References:

<http://docs.oracle.com/javadb/10.8.3.0/ref/rrefsqljgrant.html>

NEW QUESTION 91

Examine the structure of the EMPLOYEES table. (Choose the best answer.)

Name	Null?	Type
-----	-----	-----
EMPLOYEE_ID	NOT NULL	NUMBER (6)
FIRST_NAME		VARCHAR2 (20)
LAST_NAME	NOT NULL	VARCHAR2 (25)
EMAIL	NOT NULL	VARCHAR2 (25)
PHONE_NUMBER		VARCHAR2 (20)
HIRE_DATE	NOT NULL	DATE
JOB_ID	NOT NULL	VARCHAR2 (10)
SALARY		NUMBER (8, 2)
COMMISSION_PCT		NUMBER (2, 2)
MANAGER_ID		NUMBER (6)
DEPARTMENT_ID		NUMBER (4)

You must display the details of employees who have manager with MANAGER_ID 100, who were hired in the past 6 months and who have salaries greater than 10000.

- A. SELECT last_name, hire_date, salaryFROM employeesWHERE salary > 10000UNION ALL SELECT last_name, hire_date, salaryFROM employeesWHERE manager_ID = (SELECT employee_id FROM employees WHERE employee_id = 100)INETRSECTSELECT last_name, hire_date, salaryFROM employees WHERE hire_date > SYSDATE- 180;
- B. SELECT last_name, hire_date, salaryFROM employeesWHERE manager_id = (SELECT employee_id FROM employees WHERE employee_id = 100)UNION ALL(SELECT last_name, hire_date, salaryFROM employeesWHERE hire_date > SYSDATE -180INTERSECTSELECT last_name, hire_date, salaryFROM employeesWHERE salary > 10000);
- C. SELECT last_name, hire_date, salaryFROM employeesWHERE manager_id = (SELECT employee_id FROM employees WHERE employee_id = '100')UNIONSELECT last_name, hire_date, salaryFROM employeesWHERE hire_date > SYSDATE -180INTERSECTSELECT last_name, hire_date, salaryFROM employeesWHERE salary > 10000;
- D. (SELECT last_name, hire_date, salaryFROM employeesWHERE salary > 10000UNION ALLSELECT last_name, hire_date, salaryFROM employeesWHERE manager_ID = (SELECT employee_id FROM employees WHERE employee_id = 100))UNIONSELECT last_name, hire_date, salaryFROM employeesWHERE hire_date > SYSDATE -180;

Answer: C

NEW QUESTION 95

View the exhibit and examine the ORDERS table. ORDERS

Name Null? Type

ORDER ID NOT NULL NUMBER(4) ORDATE DATE DATE CUSTOMER ID NUMBER(3) ORDER TOTAL NUMBER(7,2)

The ORDERS table contains data and all orders have been assigned a customer ID. Which statement would add a NOT NULL constraint to the CUSTOMER_ID column?

- A. ALTER TABLE ordersMODIFY CONSTRAINT orders_cust_id_nn NOT NULL (customer_id);
- B. ALTER TABLE ordersADD CONSTRAINT orders_cust_id_nn NOT NULL (customer_id);
- C. ALTER TABLE ordersMODIFY customer_id CONSTRAINT orders_cust_nn NOT NULL (customer_id);
- D. ALTER TABLE ordersADD customer_id NUMBER(6)CONSTRAINT orders_cust_id_nn NOT NULL;

Answer: C

NEW QUESTION 98

Which three statements are true regarding single-row functions? (Choose three.)

- A. The data type returned, can be different from the data type of the argument that is referenced.
- B. They can return multiple values of more than one data type.
- C. They can accept only one argument.
- D. They can be nested up to only two levels.
- E. They can be used in SELECT, WHERE, and ORDER BY clauses.
- F. They can accept column names, expressions, variable names, or a user-supplied constants as arguments.

Answer: AEF

NEW QUESTION 103

View the exhibit and examine the structure of ORDERS and CUSTOMERS tables. ORDERS

Name Null? Type

ORDER_ID NOT NULL NUMBER(4) ORDER_DATE NOT NULL DATE ORDER_MODE VARCHAR2(8) CUSTOMER_ID NOT NULL NUMBER(6)

ORDER_TOTAL NUMBER(8, 2) CUSTOMERS

Name Null? Type

CUSTOMER_ID NOT NULL

NUMBER(6) CUST_FIRST_NAME NOT NULL VARCHAR2(20) CUST_LAST_NAME NOT NULL VARCHAR2(20) CREDIT_LIMIT NUMBER(9,2)

CUST_ADDRESS VARCHAR2(40)

Which INSERT statement should be used to add a row into the ORDERS table for the customer whose CUST_LAST_NAME is Roberts and CREDIT_LIMIT is 600? Assume there exists only one row with CUST_LAST_NAME as Roberts and CREDIT_LIMIT as 600.

- A. INSERT INTO (SELECT o.order_id, o.order_date, o.order_mode, c.customer_id, o.order_totalFROM orders o, customers cWHERE o.customer_id = c.customer_id AND c.cust_last_name='Roberts' AND c.credit_limit=600)VALUES (1,'10-mar-2007', 'direct', (SELECT customer_idFROM customersWHERE cust_last_name='Roberts' AND credit_limit=600), 1000);
- B. INSERT INTO orders (order_id, order_date, order_mode,(SELECT customer idFROM customersWHERE cust_last_name='Roberts' AND credit_limit=600), order_total);VALUES (1,'10-mar-2007', 'direct', &customer_id, 1000);
- C. INSERT INTO ordersVALUES (1,'10-mar-2007', 'direct',(SELECT customer_idFROM customersWHERE cust_last_name='Roberts' AND credit_limit=600), 1000);
- D. INSERT INTO orders (order_id, order_date, order_mode,(SELECT customer_idFROM customersWHERE cust_last_name='Roberts' AND credit_limit=600), order_total);VALUES (1,'10-mar-2007', 'direct', &customer_id, 1000);

Answer: C

NEW QUESTION 108

View the Exhibit and examine the structure of the EMP table which is not partitioned and not an index-organized table. (Choose two.)

EMP		
Name	Null?	Type
EMPNO	NOT NULL	NUMBER (4)
FIRST_NAME		VARCHAR2 (20)
LAST_NAME		VARCHAR2
SALARY		NUMBER (10, 2)
DEPTNO		NUMBER (2)

Evaluate this SQL statement: ALTER TABLE emp
DROP COLUMN first_name; Which two statements are true?

- A. The FIRST_NAME column can be dropped even if it is part of a composite PRIMARY KEY provided the CASCADE option is added to the SQL statement.
- B. The FIRST_NAME column would be dropped provided at least one column remains in the table.
- C. The FIRST_NAME column would be dropped provided it does not contain any data.
- D. The drop of the FIRST_NAME column can be rolled back provided the SET UNUSED option is added to the SQL statement.

Answer: B

NEW QUESTION 109

Which two statements are true about sequences created in a single instance Oracle database?

- A. The numbers generated by an explicitly defined sequence can only be used to insert data in one table.
- B. DELETE <sequencename> would remove a sequence from the database.
- C. CURRVAL is used to refer to the most recent sequence number that has been generated for a particular sequence.
- D. When the MAXVALUE limit for a sequence is reached, it can be increased by using the ALTER SEQUENCE statement.
- E. When the database instance shuts down abnormally, sequence numbers that have been cached but not used are available again when the instance is restarted.

Answer: CD

NEW QUESTION 114

View the Exhibits and examine PRODUCTS and SALES tables. Exhibit 1

Table PRODUCTS		
Name	Null?	Type
PROD_ID	NOT NULL	NUMBER (6)
PROD_NAME	NOT NULL	VARCHAR2 (50)
PROD_DESC	NOT NULL	VARCHAR2 (4000)
PROD_CATEGORY	NOT NULL	VARCHAR2 (50)
PROD_CATEGORY_ID	NOT NULL	NUMBER
PROD_UNIT_OF_MEASURE		VARCHAR2 (20)
SUPPLIER_ID	NOT NULL	NUMBER (6)
PROD_STATUS	NOT NULL	VARCHAR2 (20)
PROD_LIST_PRICE	NOT NULL	NUMBER (8, 2)
PROD_MIN_PRICE	NOT NULL	NUMBER (8, 2)

Exhibit 2

Table SALES		
Name	Null?	Type
PROD_ID	NOT NULL	NUMBER
CUST_ID	NOT NULL	NUMBER
TIME_ID	NOT NULL	DATE
CHANNEL_ID	NOT NULL	NUMBER
PROMO_ID	NOT NULL	NUMBER
QUANTITY_SOLD	NOT NULL	NUMBER (10, 2)

You issue the following query to display product name the number of times the product has been sold:

```
SOL>SELECT p.prod_name, i.item_cnt
      FROM (SELECT prod_id, COUNT(*) item_cnt
            FROM sales
            GROUP BY prod_id) I RIGHT OUTER JOIN products p
      ON i.prod_id = p.prod_id;
```

What happens when the above statement is executed?

- A. The statement executes successfully and produces the required output.
- B. The statement produces an error because a subquery in the FROM clause and outer-joins cannot be used together.
- C. The statement produces an error because the GROUP BY clause cannot be used in a subquery in the FROM clause.
- D. The statement produces an error because ITEM_CNT cannot be displayed in the outer query.

Answer: A

NEW QUESTION 118

View and Exhibit and examine the structure and data in the INVOICE table. (Choose two.)

Name	Null	Type
INV_NO	NOT NULL	NUMBER(3)
INV_DATE		DATE
INV_AMT		NUMBER(10,2)

Which two statements are true regarding data type conversion in query expressions?

- A. inv_date = '15-february-2008' :uses implicit conversion
- B. inv_amt = '0255982' : requires explicit conversion
- C. inv_date > '01-02-2008' : uses implicit conversion
- D. CONCAT(inv_amt, inv_date) : requires explicit conversion
- E. inv_no BETWEEN '101' AND '110' : uses implicit conversion

Answer: AE

NEW QUESTION 119

Examine these SQL statements that are executed in the given order:

```
CREATE TABLE emp
(emp_no NUMBER (2) CONSTRAINT emp_emp_no_pk PRIMARY KEY, ename VARCHAR 2 (15),
salary NUMBER (8, 2),
mgr_no NUMBER(2) CONSTRAINT emp_mgr_fk REFERENCES emp (emp_no)); ALTER TABLE emp
DISABLE CONSTRAINT emp_emp_no_pk CASCADE; ALTER TABLE emp
ENABLE CONSTRAINT emp_emp_no_pk;
What will be the status of the foreign key EMP_MGR_FK?
```

- A. It will be enabled and immediate.
- B. It will be enabled and deferred.
- C. It will remain disabled and can be re-enabled manually.
- D. It will remain disabled and can be enabled only by dropping the foreign key constraint and re-creating it.

Answer: C

NEW QUESTION 121

View the Exhibit and examine the structure of CUSTOMERS table.

Using the CUSTOMERS table, you need to generate a report that shows an increase in the credit limit by 15% for all customers. Customers whose credit limit has not been entered should have the message "Not Available" displayed.

Which SQL statement would produce the required result?

Table CUSTOMERS		
Name	Null?	Type
CUST_ID	NOT NULL	NUMBER
CUST_FIRST_NAME	NOT NULL	VARCHAR2 (20)
CUST_LAST_NAME	NOT NULL	VARCHAR2 (40)
CUST_GENDER	NOT NULL	CHAR (1)
CUST_YEAR_OF_BIRTH	NOT NULL	NUMBER (4)
CUST_MARITAL_STATUS		VARCHAR2 (20)
CUST_STREET_ADDRESS	NOT NULL	VARCHAR2 (40)
CUST_POSTAL_CODE	NOT NULL	VARCHAR2 (10)
CUST_CITY	NOT NULL	VARCHAR2 (30)
CUST_STATE_PROVINCE	NOT NULL	VARCHAR2 (40)
COUNTRY_ID	NOT NULL	NUMBER
CUST_INCOME_LEVEL		VARCHAR2 (30)
CUST_CREDIT_LIMIT		NUMBER
CUST_EMAIL		VARCHAR2 (30)

- A. SELECT NVL (TO CHAR(cust_credit_limit * .15), 'Not Available') "NEW CREDIT"FROM customers;
- B. SELECT TO_CHAR (NVL(cust_credit_limit * .15), 'Not Available') "NEW CREDIT"FROM customers;
- C. SELECT NVL(cust_credit_limit * .15), 'Not Available') "NEW CREDIT"FROM customers;
- D. SELECT NVL(cust_credit_limit), 'Not Available') "NEW CREDIT"FROM customers;

Answer: A

NEW QUESTION 125

View the exhibit and examine the data in the PROJ_TASK_DETAILS table. (Choose the best answer.)

PROJ_TASK_DETAILS

TASK_ID	BASED_ON	TASK_IN_CHARGE	TASK_START_DATE	TASK_END_DATE
P01		KING	10-SEPT-07	12-SEPT-07
P02	P01	KOCHAR	13-SEPT-07	14-SEPT-07
P03		GREEN	14-SEPT-07	18-SEPT-07
P04	P03	SCOTT	19-SEPT-07	20-SEPT-07

The PROJ_TASK_DETAILS table stores information about project tasks and the relation between them. The BASED_ON column indicates dependencies between tasks.

Some tasks do not depend on the completion of other tasks.

You must generate a report listing all task IDs, the task ID of any task upon which it depends and the name of the employee in charge of the task upon which it depends.

Which query would give the required result?

- A. SELECT p.task_id, p.based_on, d.task_in_charge FROM proj_task_details p JOIN proj_task_details d ON (p.task_id = d.task_id);
- B. SELECT p.task_id, p.based_on, d.task_in_charge FROM proj_task_details p FULL OUTER JOIN proj_task_details d ON (p.based_on = d.task_id);
- C. SELECT p.task_id, p.based_on, d.task_in_charge FROM proj_task_details p JOIN proj_task_details d ON (p.based_on = d.task_id);
- D. SELECT p.task_id, p.based_on, d.task_in_charge FROM proj_task_details p LEFT OUTER JOIN proj_task_details d ON (p.based_on = d.task_id);

Answer: D

NEW QUESTION 126

The first DROP operation is performed on PRODUCTS table using the following command: DROP TABLE products PURGE;

Then you performed the FLASHBACK operation by using the following command: FLASHBACK TABLE products TO BEFORE DROP;

Which statement describes the outcome of the FLASHBACK command?

- A. It recovers only the table structure.
- B. It recovers the table structure, data, and the indexes.
- C. It recovers the table structure and data but not the related indexes.
- D. It is not possible to recover the table structure, data, or the related indexes.

Answer: D

Explanation:

References:

https://docs.oracle.com/cd/B19306_01/server.102/b14200/statements_9003.htm

NEW QUESTION 128

View the exhibit and examine the structures of the EMPLOYEES and DEPARTMENTS tables. EMPLOYEES

NameNull?Type

----- EMPLOYEE_ID NOT NULL NUMBER(6) FIRST_NAME VARCHAR2(20) LAST_NAME NOT NULL VARCHAR2(25) HIRE_DATE NOT NULL DATE JOB_ID NOT NULL VARCHAR2(10) SALARY NUMBER(10,2) COMMISSION NUMBER(6,2) MANAGER_ID NUMBER(6) DEPARTMENT_ID NUMBER(4) DEPARTMENTS

NameNull?Type

----- DEPARTMENT_ID NOT NULL NUMBER(4) DEPARTMENT_NAME NOT NULL VARCHAR2(30) MANAGER_ID NUMBER(6) LOCATION_ID NUMBER(4)

You want to update EMPLOYEES table as follows: You issue the following command:

SQL> UPDATE employees SET department_id = (SELECT department_id FROM departments

WHERE location_id = 2100), (salary, commission) =

(SELECT 1.1*AVG(salary), 1.5*AVG(commission) FROM employees, departments

WHERE departments.location_id IN(2900, 2700, 2100))

WHERE department_id IN (SELECT department_id FROM departments WHERE location_id = 2900 OR location_id = 2700; What is outcome?

- A. It generates an error because multiple columns (SALARY, COMMISSION) cannot be specified together in an UPDATE statement.
- B. It generates an error because a subquery cannot have a join condition in a UPDATE statement.
- C. It executes successfully and gives the desired update
- D. It executes successfully but does not give the desired update

Answer: D

NEW QUESTION 133

Which two statements are true regarding subqueries? (Choose two.)

- A. A subquery can appear on either side of a comparison operator.
- B. Only two subqueries can be placed at one level.
- C. A subquery can retrieve zero or more rows.
- D. A subquery can be used only in SQL query statements.
- E. There is no limit on the number of subquery levels in the WHERE clause of a SELECT statement.

Answer: AC

NEW QUESTION 137

Which statement is true regarding the default behaviour of the ORDER by clause?

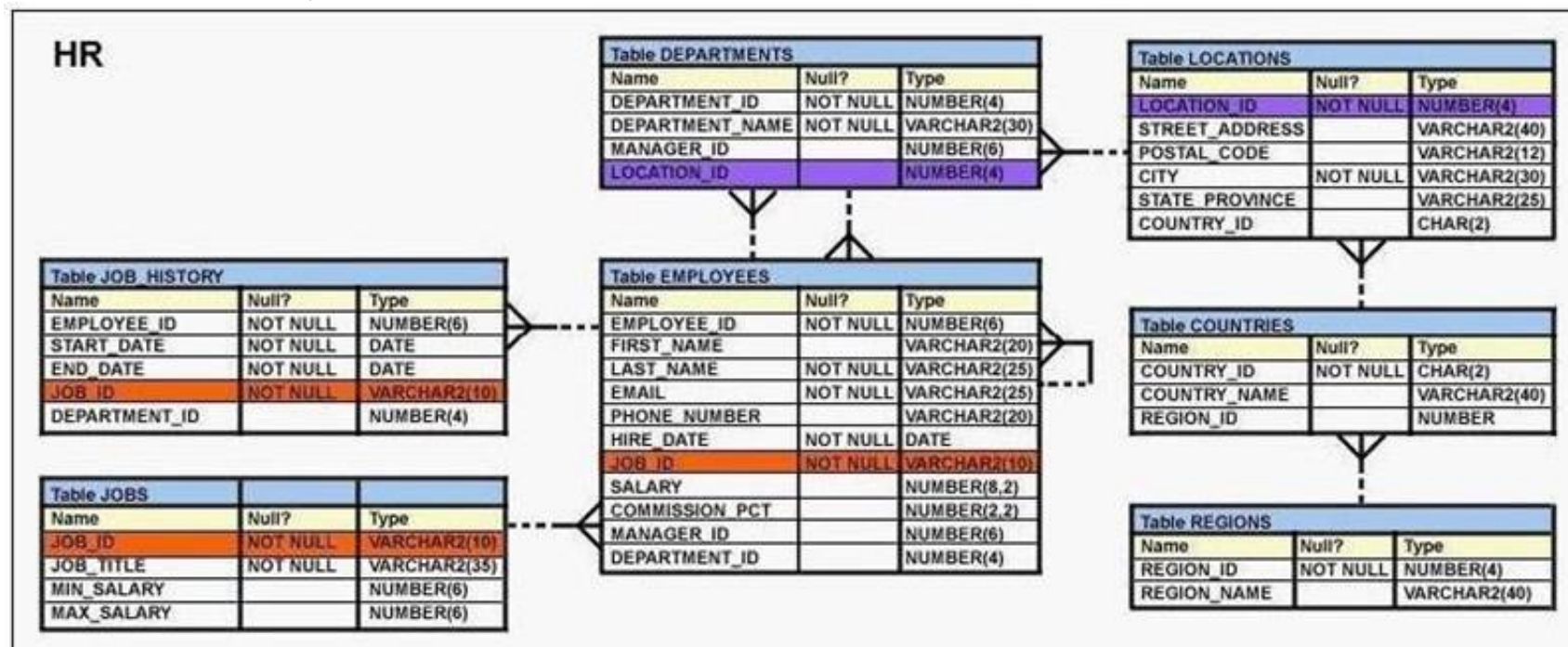
- A. Numeric values are displayed in descending order if they have decimal positions.
- B. Only columns that are specified in the SELECT list can be used in the ORDER by clause.
- C. In a character sort, the values are case-sensitive.
- D. NULLs are not including in the sort operation

Answer: C

NEW QUESTION 141

View the Exhibit and examine the structure of the EMPLOYEES table.

You want to display all employees and their managers having 100 as the MANAGER_ID. You want the output in two columns: the first column would have the LAST_NAME of the managers and the second column would have LAST_NAME of the employees.



Which SQL statement would you execute?

- A. SELECT m.last_name "Manager", e.last_name "Employee" FROM employees m JOIN employees e ON m.employee_id = e.manager_id WHERE m.manager_id=100;
- B. SELECT m.last_name "Manager", e.last_name "Employee" FROM employees m JOIN employees e ON m.employee_id = e.manager_id WHERE e.manager_id=100;
- C. SELECT m.last_name "Manager", e.last_name "Employee" FROM employees m JOIN employees e ON e.employee_id = m.manager_id WHERE m.manager_id=100;
- D. SELECT m.last_name "Manager", e.last_name "Employee" FROM employees m JOIN employees e WHERE m.employee_id = e.manager_id AND e.manager_id=100;

Answer: B

NEW QUESTION 146

Examine the structure of the CUSTOMERS table: (Choose two.)

NAME	NULL?	TYPE
CUSTNO	NOT NULL	NUMBER(3)
CUSTNAME	NOT NULL	VARCHAR2(25)
CUSTADDRESS		VARCHAR2(35)
CUST_CREDIT_LIMIT		NUMBER(5)

CUSTNO is the PRIMARY KEY.

You must determine if any customers' details have been entered more than once using a different CUSTNO, by listing all duplicate names.

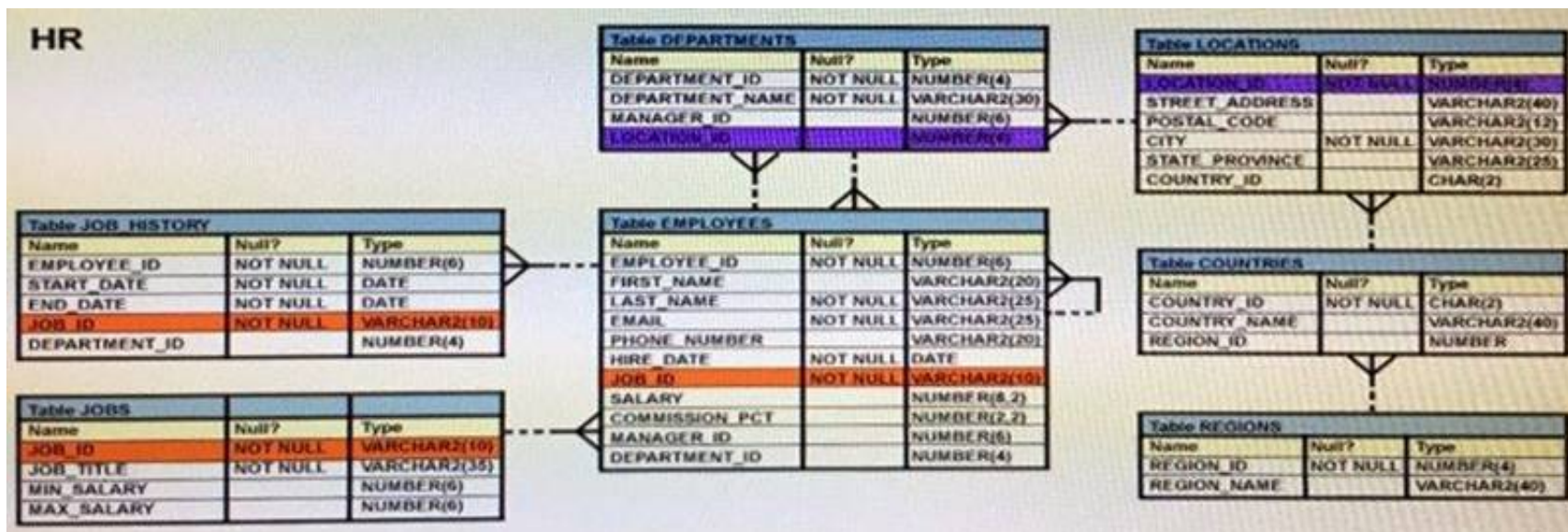
Which two methods can you use to get the required result?

- A. Subquery
- B. Self-join
- C. Full outer-join with self-join
- D. Left outer-join with self-join
- E. Right outer-join with self-join

Answer: AB

NEW QUESTION 147

View the exhibit and examine the description of the DEPARTMENTS and EMPLOYEES tables.



The retrieve data for all the employees for their EMPLOYEE_ID, FIRST_NAME, and DEPARTMENT NAME, the following SQL statement was written:
SELECT employee_id, first_name, department_name FROM employees
NATURAL JOIN departments;
The desired output is not obtained after executing the above SQL statement. What could be the reason for this?

- A. The table prefix is missing for the column names in the SELECT clause.
- B. The NATURAL JOIN clause is missing the USING clause.
- C. The DEPARTMENTS table is not used before the EMPLOYEES table in the FROM clause.
- D. The EMPLOYEES and DEPARTMENTS tables have more than one column with the same column name and data type.

Answer: D

Explanation:

Natural join needs only one column to be the same in each table. The EMPLOYEES and DEPARTMENTS tables have two columns that are the same (Department_ID and Manager_ID)

NEW QUESTION 148

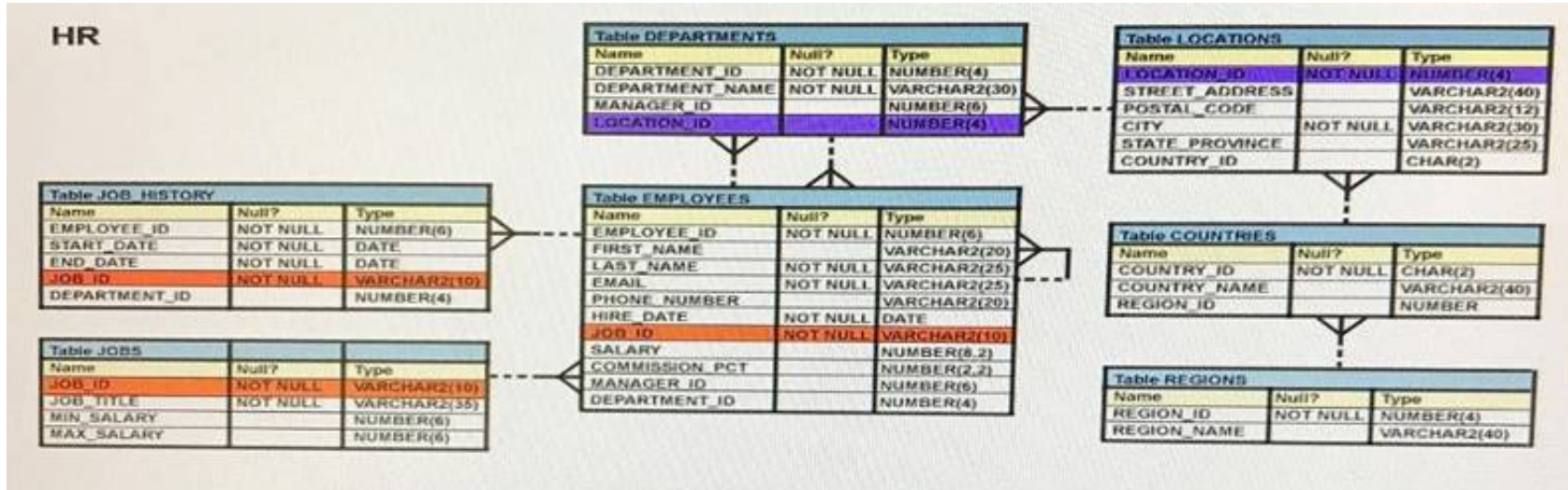
Which statement correctly grants a system privilege?

- A. GRANT CREATE VIEWON table1 TOuser1;
- B. GRANT ALTER TABLETO PUBLIC;
- C. GRANT CREATE TABLETO user1, user2;
- D. GRANT CREATE SESSIONTO ALL;

Answer: C

NEW QUESTION 152

View the Exhibit and examine the structure in the EMPLOYEES tables.



Evaluate the following SQL statement: SELECT employee_id, department_id FROM employees
WHERE department_id= 50 ORDER BY department_id UNION
SELECT employee_id, department_id FROM employees
WHERE department_id=90 UNION
SELECT employee_id, department_id
FROM employees
WHERE department_id=10;
What would be the outcome of the above SQL statement?

- A. The statement would not execute because the positional notation instead of the column name should be used with the ORDER BY clause.
- B. The statement would execute successfully and display all the rows in the ascending order of DEPARTMENT_ID.
- C. The statement would execute successfully but it will ignore the ORDER BY clause and display the rows in random order.
- D. The statement would not execute because the ORDER BY clause should appear only at the end of the SQL statement, that is, in the last SELECT statement.

Answer: D

NEW QUESTION 157

See the Exhibit and examine the structure of the PROMOTIONS table:

Table PROMOTIONS		
Name	Null?	Type
PROMO_ID	NOT NULL	NUMBER(6)
PROMO_NAME	NOT NULL	VARCHAR2(30)
PROMO_SUBCATEGORY	NOT NULL	VARCHAR2(30)
PROMO_SUBCATEGORY_ID	NOT NULL	NUMBER
PROMO_CATEGORY	NOT NULL	VARCHAR2(30)
PROMO_CATEGORY_ID	NOT NULL	NUMBER
PROMO_COST	NOT NULL	NUMBER(10,2)
PROMO_BEGIN_DATE	NOT NULL	DATE
PROMO_END_DATE	NOT NULL	DATE

Using the PROMOTIONS table,
you need to find out the average cost for all promos in the range \$0-2000 and \$2000-5000 in category A.
You issue the following SQL statements:

```
SQL>SELECT AVG(CASE
                WHEN promo_cost BETWEEN 0 AND 2000 AND promo_category='A'
                THEN promo_cost
                ELSE null END) "CAT_2000A",
AVG(CASE
    WHEN promo_cost BETWEEN 2001 AND 5000 AND promo_category='A'
    THEN promo_cost
    ELSE null END) "CAT_5000A"
FROM promotions;
```

What would be the outcome?

- A. It generates an error because multiple conditions cannot be specified for the WHEN clause.
- B. It executes successfully and gives the required result.
- C. It generates an error because CASE cannot be used with group functions.
- D. It generates an error because NULL cannot be specified as a return value.

Answer: B

Explanation:

CASE Expression

Facilitates conditional inquiries by doing the work of an IF-THEN-ELSE statement:

```
CASE expr WHEN comparison_expr1 THEN return_expr1 [WHEN comparison_expr2 THEN return_expr2
WHEN comparison_exprn THEN return_exprn ELSE else_expr]
END
```

NEW QUESTION 160

The BOOKS_TRANSACTIONS table exists in your database. SQL>SELECT * FROM books_transactions ORDER BY 3; What is the outcome on execution?

- A. The execution fails unless the numeral 3 in the ORDER BY clause is replaced by a column name.
- B. Rows are displayed in the order that they are stored in the table only for the three rows with the lowest values in the key column.
- C. Rows are displayed in the order that they are stored in the table only for the first three rows.
- D. Rows are displayed sorted in ascending order of the values in the third column in the table.

Answer: D

NEW QUESTION 163

Which three statements are true about the ALTER TABLE....DROP COLUMN.... command?

- A. A column can be dropped only if it does not contain any data.
- B. A column can be dropped only if another column exists in the table.
- C. A dropped column can be rolled back.
- D. The column in a composite PRIMARY KEY with the CASCADE option can be dropped.
- E. A parent key column in the table cannot be dropped.

Answer: BDE

NEW QUESTION 167

Which statement is true about Data Manipulation Language (DML)?

- A. DML automatically disables foreign key constraints when modifying primary key values in the parent table.
- B. Each DML statement forms a transaction by default.
- C. A transaction can consist of one or more DML statements.

D. DML disables foreign key constraints when deleting primary key values in the parent table, only when the ON DELETE CASCADE option is set for the foreign key constraint.

Answer: C

NEW QUESTION 172

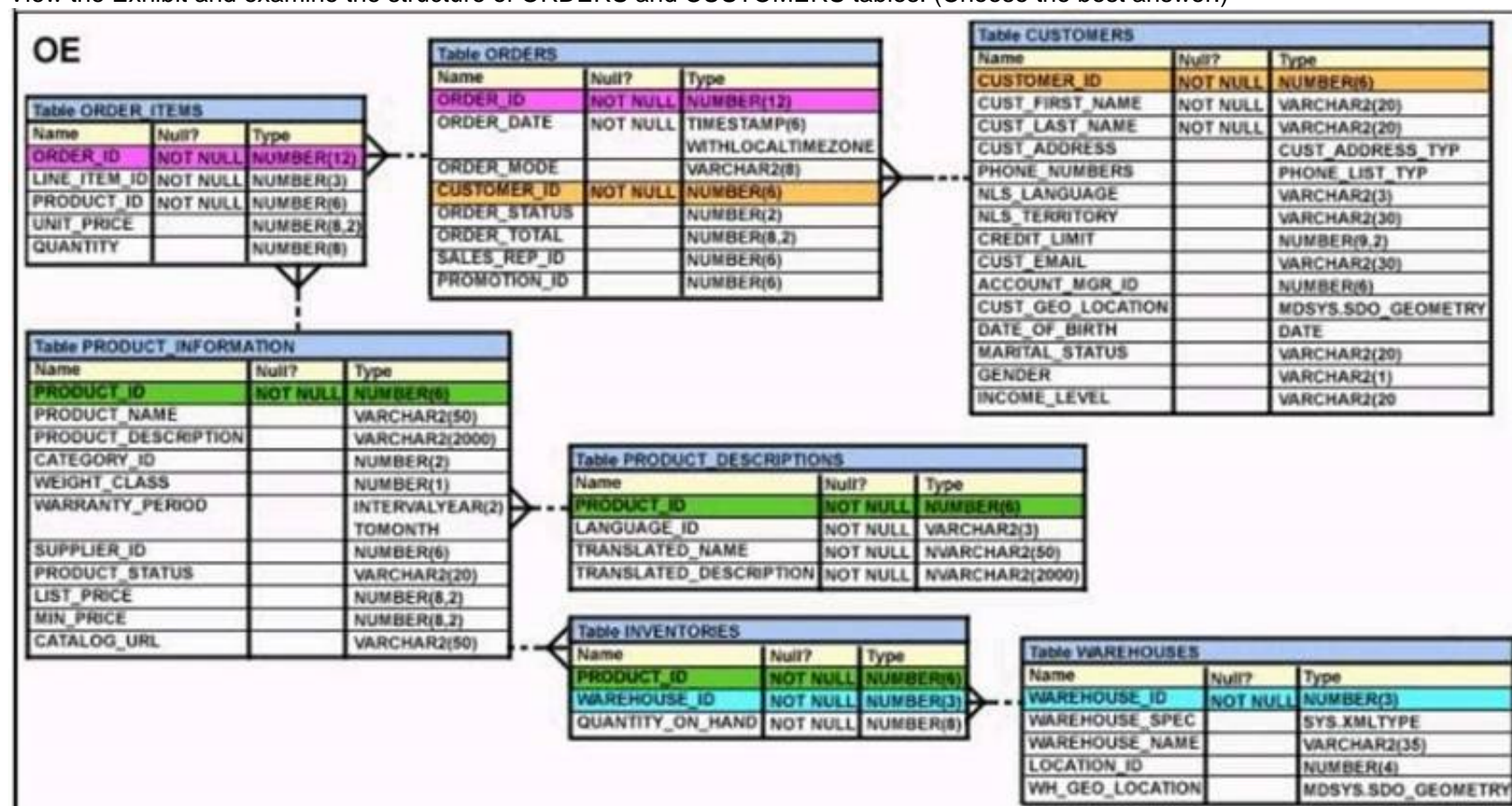
You want to display the date for the first Monday of the next month and issue the following command: SQL>SELECT TO_CHAR(NEXT_DAY(LAST_DAY(SYSDATE), 'MON'), 'dd "is the first Monday for" fmmmonth rrrr') FROM DUAL;
What is the outcome?

- A. In generates an error because rrrr should be replaced by rr in the format string.
- B. It executes successfully but does not return the correct result.
- C. It executes successfully and returns the correct result.
- D. In generates an error because TO_CHAR should be replaced with TO_DATE.
- E. In generates an error because fm and double quotation marks should not be used in the format string.

Answer: C

NEW QUESTION 175

View the Exhibit and examine the structure of ORDERS and CUSTOMERS tables. (Choose the best answer.)



You executed this UPDATE statement: UPDATE (SELECT order_date, order_total, customer_id FROM orders) Set order_date = '22-mar-2007' WHERE customer_id IN (SELECT customer_id FROM customers WHERE cust_last_name = 'Roberts' AND credit_limit = 600); Which statement is true regarding the execution?

- A. It would not execute because a subquery cannot be used in the WHERE clause of an UPDATE statement.
- B. It would not execute because two tables cannot be referenced in a single UPDATE statement.
- C. It would execute and restrict modifications to the columns specified in the SELECT statement.
- D. It would not execute because a SELECT statement cannot be used in place of a table name.

Answer: C

NEW QUESTION 179

Examine the commands used to create DEPARTMENT_DETAILS and COURSE_DETAILS:
SQL>CREATE TABLE DEPARTMENT_DETAILS (DEPARTMENT_ID NUMBER PRIMARY KEY, DEPARTMENT_NAME VARCHAR2(50), HOD VARCHAR2(50));
SQL>CREATE TABLE COURSE_DETAILS (COURSE_ID NUMBER PRIMARY KEY, COURSE_NAME VARCHAR2(50), DEPARTMENT_ID VARCHAR2(50));
You want to generate a list of all department IDs along with any course IDs that may have been assigned to them.
Which SQL statement must you use?

- A. SELECT d.department_id, c.course_id FROM department_details d RIGHT OUTER JOIN course_details c ON (d.department_id=
- B. department_id);
- C. SELECT d.department_id, c.course_id FROM department_details d LEFT OUTER JOIN course_details c ON (d.department_id=
- D. department_id);
- E. SELECT d.department_id, c.course_id FROM course_details c LEFT OUTER JOIN department_details d ON (c.department_id=
- F. department_id);
- G. SELECT d.department_id, c.course_id FROM department_details d RIGHT OUTER JOIN course_details c ON (c.department_id=
- H. department_id);

Answer: B

NEW QUESTION 182

Which two statements are true regarding working with dates? (Choose two.)

- A. The RR date format automatically calculates the century from the SYSDATE function but allows the session user to enter the century.
- B. The RR date format automatically calculates the century from the SYSDATE function and does not allow a session user to enter the century.
- C. The default internal storage of dates is in character format.
- D. The default internal storage of dates is in numeric format.

Answer: AD

NEW QUESTION 184

Examine the structure of the MEMBERS table: NameNull?Type

----- MEMBER_IDNOT NULLVARCHAR2 (6)

FIRST_NAMEVARCHAR2 (50)

LAST_NAMENOT NULLVARCHAR2 (50)

ADDRESSVARCHAR2 (50)

You execute the SQL statement:

SQL > SELECT member_id, ' ', first_name, ' ', last_name "ID FIRSTNAME LASTNAME " FROM members;

What is the outcome?

- A. It fails because the alias name specified after the column names is invalid.
- B. It fails because the space specified in single quotation marks after the first two column names is invalid.
- C. It executes successfully and displays the column details in a single column with only the alias column heading.
- D. It executes successfully and displays the column details in three separate columns and replaces only the last column heading with the alias.

Answer: D

NEW QUESTION 187

Which three statements are true regarding the WHERE and HAVING clauses in a SQL statement? (Choose three.)

- A. WHERE and HAVING clauses cannot be used together in a SQL statement.
- B. The HAVING clause conditions can have aggregate functions.
- C. The HAVING clause conditions can use aliases for the columns.
- D. The WHERE clause is used to exclude rows before the grouping of data.
- E. The HAVING clause is used to exclude one or more aggregated results after grouping data.

Answer: ABD

NEW QUESTION 192

You issued this command:

CHOOSE THREE

SQL > DROP TABLE employees; Which three statements are true?

- A. Sequences used in the EMPLOYEES table become invalid.
- B. If there is an uncommitted transaction in the session, it is committed.
- C. All indexes and constraints defined on the table being dropped are also dropped.
- D. The space used by the EMPLOYEES table is always reclaimed immediately.
- E. The EMPLOYEES table can be recovered using the ROLLBACK command.
- F. The EMPLOYEES table may be moved to the recycle bin.

Answer: BCF

NEW QUESTION 196

Examine the structure of the BOOKS_TRANSACTIONS table:

Name	Null?	Type
-----	-----	-----
TRANSACTION_ID	NOT NULL	VARCHAR2 (6)
BORROWED_DATE		DATE
DUE_DATE		DATE
BOOK_ID		VARCHAR2 (6)
MEMBER_ID		VARCHAR2 (6)

You want to display the member IDs, due date, and late fee as \$2 for all transactions. Which SQL statement must you execute?

- A. SELECT member_id AS MEMBER_ID, due_date AS DUE_DATE, \$2 AS LATE_FEE FROM BOOKS_TRANSACTIONS;
- B. SELECT member_id 'MEMBER ID', due_date 'DUE DATE', '\$2 AS LATE FEE' FROM BOOKS_TRANSACTIONS;
- C. SELECT member_id AS "MEMBER ID", due_date AS "DUE DATE", '\$2' AS "LATE FEE" FROM BOOKS_TRANSACTIONS;
- D. SELECT member_id AS "MEMBER ID", due_date AS "DUE DATE", \$2 AS "LATE FEE" FROM BOOKS_TRANSACTIONS;

Answer: C

NEW QUESTION 199

Which two statements are true regarding single row functions? (Choose two.)

- A. MOD : returns the quotient of a division.
- B. TRUNC : can be used with NUMBER and DATE values.
- C. CONCAT : can be used to combine any number of values.
- D. SYSDATE : returns the database server current date and time.
- E. INSTR : can be used to find only the first occurrence of a character in a string.
- F. TRIM : can be used to remove all the occurrences of a character from a string.

Answer: BD

NEW QUESTION 201

Using the CUSTOMERS table, you need to generate a report that shows 50% of each credit amount in each income level. The report should NOT show any repeated credit amounts in each income level.

Which query would give the required result?

- A. SELECT cust_income_level || ' ' || cust_credit_limit * 0.50 AS "50% Credit Limit" FROM customers.
- B. SELECT DISTINCT cust_income_level || ' ' || cust_credit_limit * 0.50 AS "50% Credit Limit" FROM customers.
- C. SELECT DISTINCT cust_income_level, DISTINCT cust_credit_limit * 0.50 AS "50% Credit Limit" FROM customers.
- D. SELECT cust_income_level, DISTINCT cust_credit_limit * 0.50 AS "50% Credit Limit" FROM customers

Answer: B

NEW QUESTION 206

Examine the structure of the INVOICE table. NameNull?Type

----- INV_NONOT NULLNUMBER(3) INV_DATEDATE INV_AMTNUMBER(10,2)

Which two SQL statements would execute successfully?

- A. SELECT inv_no, NVL2(inv_date, 'Pending', 'Incomplete')FROM invoice;
- B. SELECT inv_no, NVL2(inv_amt, inv_date, 'Not Available')FROM invoice;
- C. SELECT inv_no, NVL2(inv_date, sysdate-inv_date, sysdate)FROM invoice;
- D. SELECT inv_no, NVL2(inv_amt, inv_amt*.25, 'Not Available')FROM invoice;

Answer: AC

NEW QUESTION 211

Which two statements are true regarding the execution of the correlated subqueries? (Choose two.)

- A. The nested query executes after the outer query returns the row.
- B. The nested query executes first and then the outer query executes.
- C. The outer query executes only once for the result returned by the inner query.
- D. Each row returned by the outer query is evaluated for the results returned by the inner query.

Answer: AD

NEW QUESTION 216

.....

THANKS FOR TRYING THE DEMO OF OUR PRODUCT

Visit Our Site to Purchase the Full Set of Actual 1Z0-071 Exam Questions With Answers.

We Also Provide Practice Exam Software That Simulates Real Exam Environment And Has Many Self-Assessment Features. Order the 1Z0-071 Product From:

<https://www.2passeasy.com/dumps/1Z0-071/>

Money Back Guarantee

1Z0-071 Practice Exam Features:

- * 1Z0-071 Questions and Answers Updated Frequently
- * 1Z0-071 Practice Questions Verified by Expert Senior Certified Staff
- * 1Z0-071 Most Realistic Questions that Guarantee you a Pass on Your FirstTry
- * 1Z0-071 Practice Test Questions in Multiple Choice Formats and Updatesfor 1 Year