

## PMP Dumps

### Project Management Professional

<https://www.certleader.com/PMP-dumps.html>



**NEW QUESTION 1**

- (Topic 1)

Which process determines the risks that might affect the project?

- A. Perform Qualitative Risk Analysis
- B. Identify Risks
- C. Plan Risk Management
- D. Perform Quantitative Risk Analysis

**Answer:** B

**NEW QUESTION 2**

- (Topic 1)

In the Plan Stakeholder Management process, expert judgment is used to:

- A. Provide information needed to plan appropriate ways to engage project stakeholders.
- B. Ensure comprehensive identification and listing of new stakeholders.
- C. Analyze the information needed to develop the project scope statement.
- D. Decide the level of engagement of the stakeholders at each required stage.

**Answer:** D

**NEW QUESTION 3**

- (Topic 1)

Plan Risk Management is the process of defining how to:

- A. Communicate identified risks to the project stakeholders.
- B. Conduct risk management activities for a project.
- C. Analyze the impact a specific risk may have on the project.
- D. Address unexpected risks that may occur during a project.

**Answer:** B

**NEW QUESTION 4**

- (Topic 1)

Which of the following forecasting methods uses historical data as the basis for estimating future outcomes?

- A. Time series
- B. Judgmental
- C. Econometric
- D. Simulation

**Answer:** A

**NEW QUESTION 5**

- (Topic 1)

Which process is included in the Project Integration Management Knowledge Area?

- A. Manage Project Team
- B. Collect Requirements
- C. Sequence Activities
- D. Direct and Manage Project Work

**Answer:** D

**NEW QUESTION 6**

- (Topic 1)

Every project creates a unique product, service, or result that may be:

- A. tangible
- B. targeted
- C. organized
- D. variable

**Answer:** A

**NEW QUESTION 7**

- (Topic 1)

Which of the following is an example of a risk symptom?

- A. Failure to meet intermediate milestones
- B. Force of nature, such as a flood
- C. Risk threshold target
- D. Crashing, front loading, or fast tracking

**Answer:** A

**NEW QUESTION 8**

- (Topic 1)

A project can be defined as a:

- A. Temporary endeavor undertaken to create a unique product, service, or result
- B. Temporary endeavor that produces repetitive outputs
- C. Permanent endeavor undertaken to create a unique product, service, or result
- D. Permanent endeavor that produces repetitive outputs

**Answer:** A

**NEW QUESTION 9**

- (Topic 1)

Which is the document that presents a hierarchical project organization?

- A. WBS
- B. CPI
- C. OBS
- D. BOM

**Answer:** C

**NEW QUESTION 10**

- (Topic 1)

Project managers who lead by example and follow through on the commitments they make demonstrate the key interpersonal skill of:

- A. influencing
- B. leadership
- C. motivation
- D. coaching

**Answer:** A

**NEW QUESTION 10**

- (Topic 1)

The project governance approach should be described in the:

- A. change control plan
- B. project scope
- C. statement of work
- D. project management plan

**Answer:** D

**NEW QUESTION 15**

- (Topic 1)

Which process includes prioritizing risks for subsequent further analysis or action by assessing and combining their probability of occurrence and impact?

- A. Perform Qualitative Risk Analysis
- B. Perform Quantitative Risk Analysis
- C. Plan Risk Management
- D. Plan Risk Responses

**Answer:** A

**NEW QUESTION 20**

- (Topic 1)

A tool and technique used during the Define Scope process is:

- A. facilitated workshops.
- B. observations.
- C. questionnaires and surveys.
- D. group creativity techniques.

**Answer:** A

**NEW QUESTION 22**

- (Topic 1)

Which type of managers do composite organizations involve?

- A. Functional managers and manager of project managers
- B. Functional managers only
- C. Project managers only

D. Technical managers and project managers

**Answer:** A

**NEW QUESTION 26**

- (Topic 1)

What name(s) is (are) associated with the Plan-Do-Check-Act cycle?

- A. Pareto
- B. Ishikawa
- C. Shewhart-Deming
- D. Delphi

**Answer:** C

**NEW QUESTION 27**

- (Topic 1)

Which of the following strategies is used to deal with risks that may have a negative impact on project objectives?

- A. Exploit
- B. Share
- C. Enhance
- D. Transfer

**Answer:** D

**NEW QUESTION 30**

- (Topic 1)

A primary function of a project management office is to support project managers in a variety of ways, including which of the following?

- A. Developing and managing project policies, procedures, templates, and other shared documentation
- B. Acting as the project sponsor by providing financial resources to the project
- C. Resolving issues and change management within a shared governance structure
- D. Aligning organizational/strategic direction that affects project and program goals

**Answer:** A

**NEW QUESTION 31**

- (Topic 1)

Who selects the appropriate processes for a project?

- A. Project stakeholders
- B. Project sponsor and project stakeholder
- C. Project manager and project team
- D. Project manager and project sponsor

**Answer:** C

**NEW QUESTION 32**

- (Topic 1)

Which of the following is an input to the Qualitative Risk Analysis process?

- A. Risk register
- B. Risk data quality assessment
- C. Risk categorization
- D. Risk urgency

**Answer:** A

**NEW QUESTION 36**

- (Topic 1)

Skills necessary for project management such as motivating to provide encouragement; listening actively; persuading a team to perform an action; and summarizing, recapping, and identifying next steps are known as:

- A. organizational skills
- B. technical skills
- C. communication skills
- D. hard skills

**Answer:** C

**NEW QUESTION 41**

- (Topic 1)

The Identify Stakeholders process is found in which Process Group?

- A. Initiating
- B. Monitoring and Controlling
- C. Planning
- D. Executing

**Answer:** A

**NEW QUESTION 45**

- (Topic 1)

The component of the human resource management plan that includes ways in which team members can obtain certifications that support their ability to benefit the project is known as:

- A. recognition and rewards
- B. compliance
- C. staff acquisition
- D. training needs

**Answer:** D

**NEW QUESTION 46**

- (Topic 1)

What tool and technique is used to determine whether work and deliverables meet requirements and product acceptance criteria?

- A. Decomposition
- B. Benchmarking
- C. Inspection
- D. Checklist analysis

**Answer:** C

**NEW QUESTION 49**

- (Topic 1)

In which process is a project manager identified and given the authority to apply resources to project activities?

- A. Acquire Project Team
- B. Develop Project Management Plan
- C. Manage Project Execution
- D. Develop Project Charter

**Answer:** D

**NEW QUESTION 53**

- (Topic 1)

Project contracts generally fall into which of the following three broad categories?

- A. Fixed-price, cost reimbursable, time and materials
- B. Make-or-buy, margin analysis, fixed-price
- C. Time and materials, fixed-price, margin analysis
- D. Make-or-buy, lump-sum, cost-plus-incentive

**Answer:** A

**NEW QUESTION 57**

- (Topic 1)

Which of the following helps to ensure that each requirement adds business value by linking it to the business and project objectives?

- A. Requirements traceability matrix
- B. Work breakdown structure (WBS) dictionary
- C. Requirements management plan
- D. Requirements documentation

**Answer:** A

**NEW QUESTION 62**

- (Topic 1)

A tool and technique used during the Collect Requirements process is:

- A. prototypes.
- B. expert judgment.
- C. alternatives identification.
- D. product analysis.

**Answer:** A

**NEW QUESTION 64**

- (Topic 1)

The stakeholder register is an output of:

- A. Identify Stakeholders.
- B. Plan Stakeholder Management.
- C. Control Stakeholder Engagement.
- D. Manage Stakeholder Engagement.

**Answer:** A

**NEW QUESTION 65**

- (Topic 1)

An issue log is an input to which Project Human Resource Management process?

- A. Manage Project Team
- B. Acquire Project Team
- C. Plan Human Resource Management
- D. Develop Project Team

**Answer:** A

**NEW QUESTION 66**

- (Topic 1)

Plan Communications Management develops an approach and plan for project communications based on stakeholders' needs and requirements and:

- A. Available organizational assets
- B. Project staff assignments
- C. Interpersonal skills
- D. Enterprise environmental factors

**Answer:** A

**NEW QUESTION 68**

- (Topic 1)

The product scope description is used to:

- A. Gain stakeholders support for the project.
- B. Document the characteristics of the product.
- C. Describe the project in great detail.
- D. Formally authorize the project.

**Answer:** B

**NEW QUESTION 73**

- (Topic 1)

A Project Management Office (PMO) manages a number of aspects, including what?

- A. Project scope, schedule, cost, and quality of the products of the work packages
- B. Central coordinator of communication management across projects, and for the delivery of specific project objectives, organization opportunity assessment
- C. Assigns project resources to best meet project objectives
- D. Overall risk, overall opportunity and interdependencies among projects

**Answer:** D

**NEW QUESTION 77**

- (Topic 1)

Which Process Group contains those processes performed to define a new project?

- A. Initiating
- B. Planning
- C. Executing
- D. Closing

**Answer:** A

**NEW QUESTION 81**

- (Topic 1)

Soft logic is also known as what type of dependency?

- A. External
- B. Discretionary
- C. Mandatory
- D. Internal

**Answer:** B

**NEW QUESTION 86**

- (Topic 1)

Which process uses occurrence probability and impact on project objectives to assess the priority of identified risks?

- A. Identify Risks
- B. Perform Qualitative Risk Analysis
- C. Plan Risk Management
- D. Perform Quantitative Risk Analysis

**Answer:** B

**NEW QUESTION 89**

- (Topic 1)

Which of the following is a strategy to deal with positive risks or opportunities?

- A. Mitigate
- B. Transfer
- C. Exploit
- D. Avoid

**Answer:** C

**NEW QUESTION 92**

- (Topic 1)

Which type of risk diagram is useful for showing time ordering of events?

- A. Ishikawa
- B. Milestone
- C. Influence
- D. Decision tree

**Answer:** C

**NEW QUESTION 97**

- (Topic 1)

Which of the following correctly explains the term "progressive elaboration"?

- A. Changing project specifications continuously
- B. Elaborate tracking of the project progress
- C. Elaborate tracking of the project specifications with a change control system
- D. Project specifications becoming more explicit and detailed as the project progresses

**Answer:** D

**NEW QUESTION 102**

- (Topic 1)

Which characteristics do effective project managers possess?

- A. Project management knowledge, performance skills, and personal effectiveness
- B. Preparedness, project management knowledge, and personality characteristics
- C. General management, preparedness, and project management knowledge
- D. Assertiveness, collaboration, and performance skills

**Answer:** A

**NEW QUESTION 103**

- (Topic 1)

Which process numerically analyzes the effect of identified risks on overall project objectives?

- A. Plan Risk Management
- B. Plan Risk Responses
- C. Perform Quantitative Risk Analysis
- D. Perform Qualitative Risk Analysis

**Answer:** C

**NEW QUESTION 108**

- (Topic 1)

Which is an output of the Collect Requirements process?

- A. Requirements traceability matrix
- B. Project scope statement
- C. WBS dictionary
- D. Work performance measurements

**Answer:** A



**NEW QUESTION 109**

- (Topic 1)

What type of project structure is a hierarchically organized depiction of the resources by type?

- A. Organizational breakdown structure (OBS)
- B. Resource breakdown structure (RBS)
- C. Work breakdown structure (WBS)
- D. Project breakdown structure (PBS)

**Answer:** B

**NEW QUESTION 114**

- (Topic 1)

A stakeholder expresses a need not known to the project manager. The project manager most likely missed a step in which stakeholder management process?

- A. Plan Stakeholder Management
- B. Identify Stakeholders
- C. Manage Stakeholder Engagement
- D. Control Stakeholder Engagement

**Answer:** A

**NEW QUESTION 115**

- (Topic 1)

Stakeholders can be identified in later stages of the project because the Identify Stakeholders process should be:

- A. Continuous
- B. Discrete
- C. Regulated
- D. Arbitrary

**Answer:** A

**NEW QUESTION 118**

- (Topic 1)

Prioritizing risks for further analysis or action by assessing and combining their probability of occurrence and impact takes place in which process?

- A. Monitor and Control Risks
- B. Plan Risk Management
- C. Perform Qualitative Risk Analysis
- D. Perform Quantitative Risk Analysis

**Answer:** C

**NEW QUESTION 121**

- (Topic 1)

Which of the following is an output of the Distribute Information process?

- A. Project calendar
- B. Communications management plan
- C. Organizational process assets updates
- D. Project document updates

**Answer:** C

**NEW QUESTION 122**

- (Topic 1)

Which statement is true about the project management body of knowledge?

- A. Recognized by every project manager
- B. Constantly evolving
- C. The sum of all knowledge related to project management
- D. A sum of knowledge that should be applied on every project

**Answer:** B

**NEW QUESTION 125**

- (Topic 1)

An output of the Develop Project Team process is:

- A. change requests
- B. team performance assessments
- C. project staff assignments
- D. project documents updates

**Answer:**



B

**NEW QUESTION 126**

- (Topic 1)

Risk exists the moment that a project is:

- A. planned.
- B. conceived.
- C. chartered.
- D. executed.

**Answer:** B

**NEW QUESTION 128**

- (Topic 1)

Which standard has interrelationships to other project management disciplines such as program management and portfolio management?

- A. Program Management Body of Knowledge Guide
- B. The Standard for Program Management
- C. Organizational Project Management Maturity Model (OPM3\$)
- D. Guide to the Project Management Body of Knowledge (PMBOK®)

**Answer:** D

**NEW QUESTION 129**

- (Topic 1)

Which technique is commonly used for the Perform Quantitative Risk Analysis process?

- A. Brainstorming
- B. Strategies for opportunities
- C. Decision tree analysis
- D. Risk data quality assessment

**Answer:** C

**NEW QUESTION 133**

- (Topic 1)

Activity resource requirements and resource breakdown structure are outputs from what Project Time Management process?

- A. Schedule Control
- B. Activity Definition
- C. Schedule Development
- D. Activity Resource Estimating

**Answer:** D

**NEW QUESTION 138**

- (Topic 1)

Most experienced project managers know that:

- A. every project requires the use of all processes in the PMBOK® Guide.
- B. there is no single way to manage a project.
- C. project management techniques are risk free.
- D. there is only one way to manage projects successfully.

**Answer:** B

**NEW QUESTION 141**

- (Topic 1)

Which input to Collect Requirements is used to identify stakeholders who can provide information on requirements?

- A. Stakeholder register
- B. Scope management plan
- C. Stakeholder management plan
- D. Project charter

**Answer:** A

**NEW QUESTION 142**

- (Topic 1)

When addressing roles and responsibilities, which item ensures that the staff has the skills required to complete project activities?

- A. Authority
- B. Role
- C. Competency
- D. Responsibility

**Answer: C**

**NEW QUESTION 144**

- (Topic 1)

Which of the following statements best describes the influence of stakeholders and the cost of changes as project time advances?

- A. The influence of the stakeholders increases, the cost of changes increases.
- B. The influence of the stakeholders decreases, the cost of changes increases.
- C. The influence of the stakeholders increases, the cost of changes decreases.
- D. The influence of the stakeholders decreases, the cost of changes decreases.

**Answer: B**

**NEW QUESTION 146**

- (Topic 1)

The probability and impact matrix is primarily used to:

- A. Quantify risk issues for trends during a quality audit.
- B. Develop a risk register for risk planning.
- C. Evaluate each risk's importance and priority during Perform Qualitative Risk Analysis.
- D. Define risk and compare impacts during Perform Quantitative Risk Analysis.

**Answer: C**

**NEW QUESTION 151**

- (Topic 1)

What is one of the objectives of Project Risk Management?

- A. Decrease the probability and impact of an event on project objectives.
- B. Distinguish between a project risk and a project issue so that a risk mitigation plan can be put in place.
- C. Increase the probability and impact of positive events.
- D. Removal of project risk.

**Answer: C**

**NEW QUESTION 152**

- (Topic 1)

The project scope statement and resource calendars are inputs to which Project Time Management process?

- A. Sequence Activities
- B. Estimate Activity Resources
- C. Develop Schedule
- D. Control Schedule

**Answer: C**

**NEW QUESTION 156**

- (Topic 1)

Which group creativity technique asks a selected group of experts to answer questionnaires and provide feedback regarding the responses from each round of requirements gathering?

- A. The Delphi technique
- B. Nominal group technique
- C. Affinity diagram
- D. Brainstorming

**Answer: A**

**NEW QUESTION 157**

- (Topic 1)

A project's purpose or justification, measurable project objectives and related success criteria, a summary milestone schedule, and a summary budget are all components of which document?

- A. Work breakdown structure
- B. Requirements document
- C. Project charter
- D. Project management plan

**Answer: C**

**NEW QUESTION 160**

- (Topic 1)

The process of defining how the project scope will be validated and controlled is known as:

- A. Define Scope.

- B. Develop Project Management Plan.
- C. Plan Scope Management.
- D. Plan Quality Management.

**Answer:** C

**NEW QUESTION 161**

- (Topic 1)

Inputs to Identifying Stakeholders include:

- A. Project charter, procurement documents, enterprise environmental factors, and organizational process assets.
- B. Project charter, stakeholder analysis, enterprise environmental factors, and organizational process assets.
- C. Project charter, stakeholder analysis, enterprise environmental factors, and stakeholder management strategy.
- D. Project charter, procurement documents, expert judgment, and organizational process assets.

**Answer:** A

**NEW QUESTION 164**

- (Topic 1)

Which of the following terms indicates a deliverable-oriented hierarchical decomposition of the project work?

- A. WBS directory
- B. Activity list
- C. WBS
- D. Project schedule

**Answer:** C

**NEW QUESTION 169**

- (Topic 1)

One of the objectives of a quality audit is to:

- A. highlight the need for root cause analysis.
- B. share the process documentation among stakeholders.
- C. offer assistance with non-value-added activities.
- D. identify all of the gaps or shortcomings.

**Answer:** D

**NEW QUESTION 174**

- (Topic 1)

What is project management?

- A. A logical grouping of project management inputs, outputs, tools, and techniques
- B. Applying knowledge, skills, tools, and techniques to project activities to meet the project requirements
- C. Launching a process that can result in the authorization of a new project
- D. A formal, approved document that defines how the project is executed, monitored, and controlled

**Answer:** B

**NEW QUESTION 179**

- (Topic 1)

What is Project Portfolio Management?

- A. Management of a project by dividing the project into more manageable sub-projects.
- B. Management of a project by utilizing a portfolio of general management skills, such as planning, organizing, staffing, executing and controlling.
- C. Management of all projects undertaken by a company.
- D. Management of a collection of projects that are grouped together to facilitate effective management and meet strategic business objectives.

**Answer:** D

**NEW QUESTION 183**

- (Topic 1)

Which activity is an input to the select sellers process?

- A. Organizational process assets
- B. Resource availability
- C. Change control process
- D. Team performance assessment

**Answer:** A

**NEW QUESTION 188**

- (Topic 1)

For any given project, the project manager, in collaboration with the project team, is responsible for:

- A. Applying knowledge, skills, and processes uniformly.
- B. Informing the project sponsor about which processes are going to be used.
- C. Tailoring the processes to fit the abilities of the organization.
- D. Determining which particular processes are appropriate.

**Answer:** D

**NEW QUESTION 192**

- (Topic 1)

Which type of contract is a hybrid of both a cost-reimbursable and a fixed-price contract?

- A. Cost Plus Award Fee Contract (CPAF)
- B. Firm-Fixed -Price Contract (FFP)
- C. Time and Material Contract (T&M)
- D. Cost Plus Incentive Fee Contract (CPIF)

**Answer:** C

**NEW QUESTION 196**

- (Topic 1)

The process of prioritizing risks for further analysis or action is known as:

- A. Plan Risk Management.
- B. Plan Risk Responses.
- C. Perform Qualitative Risk Analysis.
- D. Perform Quantitative Risk Analysis.

**Answer:** C

**NEW QUESTION 199**

- (Topic 1)

Which activity is an input to the Conduct Procurements process?

- A. Organizational process assets
- B. Resource availability
- C. Perform Integrated Change Control
- D. Team performance assessment

**Answer:** A

**NEW QUESTION 202**

- (Topic 1)

A project lifecycle is defined as:

- A. a collection of generally sequential and sometimes overlapping project phases.
- B. a process required to ensure that the project includes all the work required, and only the work required, to complete the project successfully.
- C. a recognized standard for the project management profession.
- D. the application of knowledge, skills, tools, and techniques to project activities to meet the project requirements.

**Answer:** A

**NEW QUESTION 207**

- (Topic 1)

The purpose of developing a project scope management plan is to:

- A. Manage the timely completion of the project.
- B. Ensure that the project includes all of the work required.
- C. Make sure the project will satisfy the needs for which it was begun.
- D. Reduce the risk of negative events in the project.

**Answer:** B

**NEW QUESTION 212**

- (Topic 1)

The creation of an internet site to engage stakeholders on a project is an example of which type of communication?

- A. Push
- B. Pull
- C. Interactive
- D. Iterative

**Answer:** B

**NEW QUESTION 213**

- (Topic 1)

An input to the Collect Requirements process is the:

- A. stakeholder register.
- B. project management plan.
- C. project scope statement.
- D. requirements management plan.

**Answer:** A

**NEW QUESTION 218**

- (Topic 1)

Which of the following is a tool or technique used in the Acquire Project Team process?

- A. Networking
- B. Training
- C. Negotiation
- D. Issue log

**Answer:** C

**NEW QUESTION 221**

- (Topic 1)

Which tool or technique is used in the Develop Project Management Plan process?

- A. Pareto diagram
- B. Performance reporting
- C. SWOT analysis
- D. Expert judgment

**Answer:** D

**NEW QUESTION 225**

- (Topic 1)

Technical capability, past performance, and intellectual property rights are examples of:

- A. performance measurement criteria
- B. source selection criteria
- C. product acceptance criteria
- D. phase exit criteria

**Answer:** B

**NEW QUESTION 228**

- (Topic 1)

Which of the following methods is a project selection technique?

- A. Flowcharting
- B. Earned value
- C. Cost-benefit analysis
- D. Pareto analysis

**Answer:** C

**NEW QUESTION 233**

- (Topic 1)

The business needs, assumptions, and constraints and the understanding of the customers needs and high-level requirements are documented in the:

- A. Project management plan.
- B. Project charter.
- C. Work breakdown structure.
- D. Stakeholder register.

**Answer:** B

**NEW QUESTION 237**

- (Topic 1)

Which tool or technique is used to develop a project charter?

- A. Project manager information systems
- B. Expert judgment
- C. Change control meetings
- D. Brainstorming

**Answer:** B

**NEW QUESTION 240**

- (Topic 1)

An input required in Define Scope is an organizational:

- A. structure.
- B. process asset.
- C. matrix.
- D. breakdown structure.

**Answer: B**

**NEW QUESTION 243**

- (Topic 1)

Which document in the project management plan can be updated in the Plan Procurement Management process?

- A. Budget estimates
- B. Risk matrix
- C. Requirements documentation
- D. Procurement documents

**Answer: C**

**NEW QUESTION 245**

- (Topic 1)

In which Knowledge Area is the project charter developed?

- A. Project Cost Management
- B. Project Scope Management
- C. Project Time Management
- D. Project Integration Management

**Answer: D**

**NEW QUESTION 248**

- (Topic 1)

Which process is conducted from project inception through completion and is ultimately the responsibility of the project manager?

- A. Control Quality
- B. Monitor and Control Project Work
- C. Control Scope
- D. Perform Integrated Change Control

**Answer: D**

**NEW QUESTION 250**

- (Topic 1)

The Cost Management processes and their associated tools and techniques are usually selected during which of the following?

- A. Project finance management
- B. Project cost estimation
- C. Project life cycle definition
- D. Project plan development

**Answer: C**

**NEW QUESTION 253**

- (Topic 1)

A complete set of concepts, terms, and activities that make up an area of specialization is known as:

- A. a Knowledge Area
- B. a Process Group
- C. program management
- D. portfolio management

**Answer: A**

**NEW QUESTION 257**

- (Topic 1)

The product scope description is used to:

- A. Gain stakeholders' support for the project.
- B. Progressively elaborate the characteristics of the product, service, or result.
- C. Describe the project in great detail.
- D. Define the process and criteria for accepting a completed product, service, or result.

**Answer: B**

**NEW QUESTION 262**

- (Topic 1)

Which of the following documents allows the project manager to assess risks that may require near term action?

- A. Probability and impact matrix
- B. Contingency analysis report
- C. Risk urgency assessment
- D. Rolling wave plan

**Answer:** C

**NEW QUESTION 265**

- (Topic 2)

One of the key benefits of the Plan Human Resource Management process is that it:

- A. outlines team selection guidelines and team member responsibilities.
- B. establishes project roles and responsibilities.
- C. improves teamwork, interpersonal skills, and competencies.
- D. provides an accurate appraisal of team member performance.

**Answer:** B

**NEW QUESTION 268**

- (Topic 2)

Which process involves defining, preparing, and coordinating all subsidiary plans and integrating them into a comprehensive plan?

- A. Direct and Manage Project Work
- B. Develop Project Management Plan
- C. Plan Quality Management
- D. Monitor and Control Project Work

**Answer:** B

**NEW QUESTION 269**

- (Topic 2)

During project selection, which factor is most important?

- A. Types of constraints
- B. Internal business needs
- C. Budget
- D. Schedule

**Answer:** B

**NEW QUESTION 274**

- (Topic 2)

The specific technique for identifying a problem, discovering the causes that lead to it, and developing preventive actions is:

- A. Inspection
- B. Use of quality checklists
- C. Root cause analysis
- D. Use of matrix diagrams

**Answer:** C

**NEW QUESTION 275**

- (Topic 2)

Projects can be divided into phases to provide better management control. Collectively, what are these phases known as?

- A. Complete project phase
- B. Project life
- C. The project life cycle
- D. Project cycle

**Answer:** C

**NEW QUESTION 279**

- (Topic 2)

Which of the following is used to illustrate the connections between work packages or activities and project team members?

- A. Hierarchical-type charts (HTC)
- B. Organizational breakdown structure (OBS)
- C. Work breakdown structure (WBS)
- D. Responsibility assignment matrix (RAM)

**Answer:**



D

**NEW QUESTION 283**

- (Topic 2)

Which tools or techniques are used in the Plan Schedule Management process?

- A. Benchmarking, expert judgment, and analytical techniques
- B. Statistical sampling, benchmarking, and meetings
- C. Negotiations, pre-assignment, and multi-criteria decision analysis
- D. Expert judgment, analytical techniques, and meetings

**Answer:** D

**NEW QUESTION 285**

- (Topic 2)

A regression line is used to estimate:

- A. Whether or not a process is stable or has predictable performance.
- B. How a change to the independent variable influences the value of the dependent variable.
- C. The upper and lower specification limits on a control chart.
- D. The central tendency, dispersion, and shape of a statistical distribution.

**Answer:** B

**NEW QUESTION 290**

- (Topic 2)

Which process involves the creation of a document that provides the project manager with the authority to apply resources to a project?

- A. Define Activities
- B. Direct and Manage Project Work
- C. Develop Project Management Plan
- D. Develop Project Charter

**Answer:** D

**NEW QUESTION 292**

- (Topic 2)

The only Process Group that comprises processes that typically occur from the beginning to the end of the project life cycle is:

- A. Planning.
- B. Executing,
- C. Monitoring and Controlling.
- D. Closing.

**Answer:** A

**NEW QUESTION 295**

- (Topic 2)

Which quality planning tools and techniques are used to visually identify logical groupings based on natural relationships?

- A. Force field diagrams
- B. Cause-and-effect diagrams
- C. Affinity diagrams
- D. Nominal group techniques

**Answer:** C

**NEW QUESTION 299**

- (Topic 2)

In Plan Risk Management, which of the management plans determines who will be available to share information on various risks and responses at different times and locations?

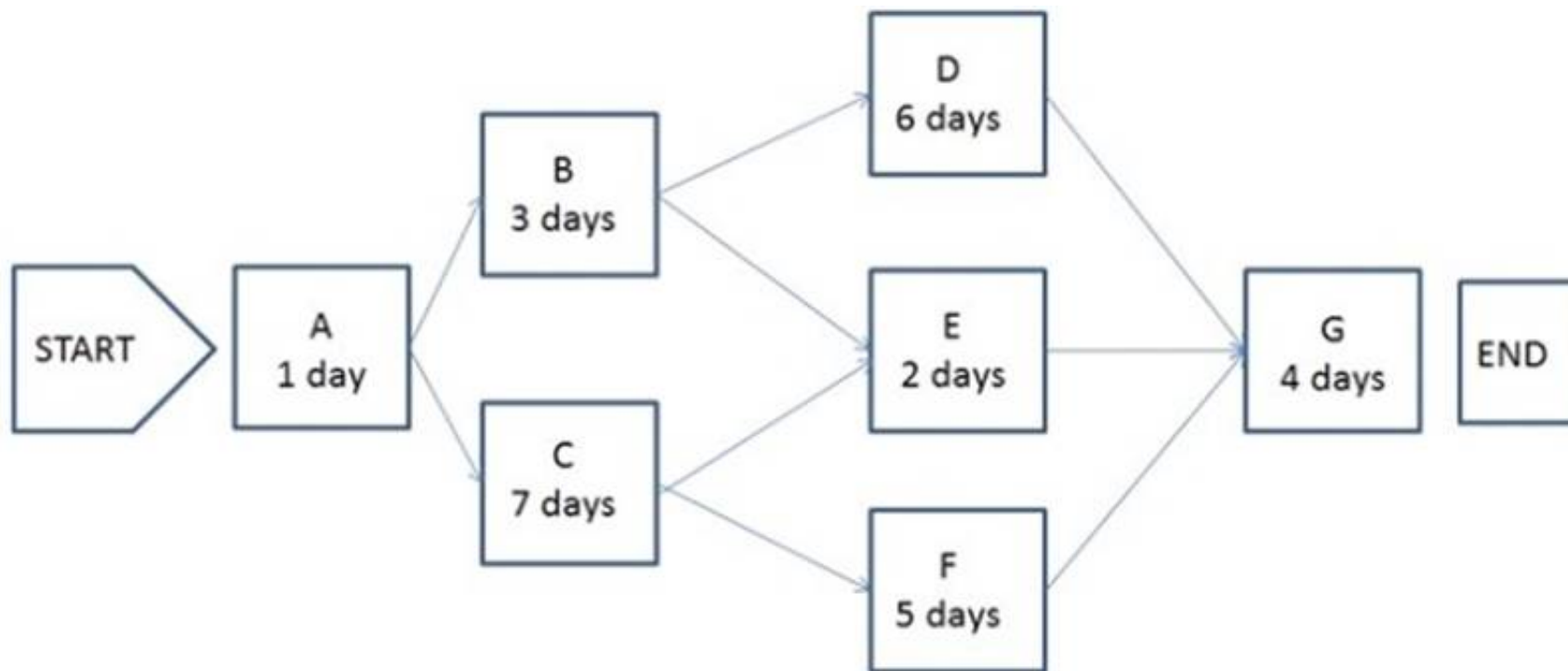
- A. Schedule
- B. Quality
- C. Communications
- D. Cost

**Answer:** C

**NEW QUESTION 300**

- (Topic 2)

The following is a network diagram for a project.



What is the critical path for the project?

- A. A-B-D-G
- B. A-B-E-G
- C. A-C-F-G
- D. A-C-E-G

**Answer: C**

#### NEW QUESTION 303

- (Topic 2)

Which is used to solicit proposals from prospective sellers?

- A. Procurement statement of work
- B. Resource calendars
- C. Procurement document
- D. Independent estimates

**Answer: C**

#### NEW QUESTION 307

- (Topic 2)

At which stage of the project should certain factors such as the unavailability of human resources due to constraint be considered?

- A. Initiation
- B. Execution
- C. Planning
- D. Monitoring and Controlling

**Answer: C**

#### NEW QUESTION 312

- (Topic 2)

Which Project Time Management process includes bottom-up estimating as a tool or technique?

- A. Estimate Activity Resources
- B. Sequence Activities
- C. Estimate Activity Durations
- D. Develop Schedule

**Answer: A**

#### NEW QUESTION 314

- (Topic 2)

The processes required to establish the scope of the project, refine the objectives, and define the course of action required to attain the objectives that the project has been undertaken to achieve are grouped within which Process Group?

- A. Initiating
- B. Planning
- C. Executing
- D. Monitoring and Controlling

**Answer: B**

#### NEW QUESTION 316

- (Topic 2)

Which piece of information is part of the WBS Dictionary?

- A. Responsible organization
- B. Change requests
- C. Validated deliverables
- D. Organizational process assets

**Answer:** A

**NEW QUESTION 318**

- (Topic 2)

A project in which the scope, time, and cost of delivery are determined as early as possible is following a life cycle that is:

- A. Adaptive
- B. Predictive
- C. Incremental
- D. Iterative

**Answer:** B

**NEW QUESTION 319**

- (Topic 2)

An example of a group decision-making technique is:

- A. Nominal group technique.
- B. Majority.
- C. Affinity diagram.
- D. Multi-criteria decision analysis.

**Answer:** B

**NEW QUESTION 324**

- (Topic 2)

A contract management plan is a subsidiary of what other type of plan?

- A. Resource plan
- B. Project management plan
- C. Cost control plan
- D. Expected monetary value plan

**Answer:** B

**NEW QUESTION 326**

- (Topic 2)

In the Define Activities process, the schedule management plan is used to:

- A. Capture the lessons learned from other projects for comparison.
- B. Contain the standard activity list.
- C. Document and support the project change requests.
- D. Prescribe the level of detail needed to manage the work.

**Answer:** D

**NEW QUESTION 329**

- (Topic 2)

Which quality tool may prove useful in understanding and estimating the cost of quality in a process?

- A. Checksheets
- B. Histograms
- C. Flowcharts
- D. Control charts

**Answer:** C

**NEW QUESTION 330**

- (Topic 2)

Project deliverables that have been completed and checked for correctness through the Control Quality process are known as:

- A. Verified deliverables.
- B. Validated deliverables.
- C. Acceptance criteria.
- D. Activity resource requirements.

**Answer:** A

**NEW QUESTION 335**

- (Topic 2)

When does the project team determine which dependencies are discretionary?

- A. Before the Define Activities process
- B. During the Define Activities process
- C. Before the Sequence Activities process
- D. During the Sequence Activities process

**Answer:** D

#### NEW QUESTION 338

- (Topic 2)

Which Knowledge Area is concerned with the processes required to ensure timely and appropriate generation, collection, distribution, storage, retrieval, and ultimate disposition of project information?

- A. Project Integration Management
- B. Project Communications Management
- C. Project Information Management System (PIMS)
- D. Project Scope Management

**Answer:** B

#### NEW QUESTION 342

- (Topic 2)

Which of the following are three inputs to the risk register?

- A. Risk register updates, stakeholder register, and quality management plan
- B. Communication management plan, enterprise environmental factors, and activity duration estimates
- C. Risk management plan, activity cost estimates, and project documents
- D. Project scope statement, organizational process assets, and scope baseline

**Answer:** C

#### NEW QUESTION 343

- (Topic 2)

The primary benefit of the Plan Schedule Management process is that it:

- A. provides guidance to identify time or schedule challenges within the project.
- B. tightly links processes to create a seamless project schedule.
- C. guides how the project schedule will be managed throughout the project.
- D. creates an overview of all activities broken down into manageable subsections.

**Answer:** C

#### NEW QUESTION 346

- (Topic 2)

Which of the following is an input to Control Scope?

- A. Project schedule
- B. Organizational process assets updates
- C. Project document updates
- D. Work performance information

**Answer:** B

#### NEW QUESTION 349

- (Topic 2)

The scope management plan and scope baseline are contained in:

- A. organizational process assets
- B. a requirements traceability matrix
- C. the project charter
- D. the project management plan

**Answer:** D

#### NEW QUESTION 351

- (Topic 2)

Which tool or technique of Plan Quality involves comparing actual or planned practices to those of other projects to generate ideas for improvement and provide a basis by which to measure performance?

- A. Histogram
- B. Quality audits
- C. Benchmarking
- D. Performance measurement analysis

**Answer:** C

**NEW QUESTION 352**

- (Topic 2)

What are the identified risks for doing excessive decomposition in a WBS?

- A. Insufficient project funding and disqualification of sellers
- B. Insufficient project funding and ineffective use of resources
- C. Disqualification of sellers and non-productive management efforts
- D. Non-productive management effort and inefficient use of resources

**Answer:** D

**NEW QUESTION 353**

- (Topic 2)

Payback period, return on investment, internal rate of return, discounted cash flow, and net present value are all examples of:

- A. Expert judgment.
- B. Analytical techniques.
- C. Earned value management.
- D. Group decision-making techniques.

**Answer:** B

**NEW QUESTION 358**

- (Topic 2)

Units of measure, level of precision, level of accuracy, control thresholds, and rules of performance measurement are examples of items that are established in the:

- A. Cost management plan.
- B. Work performance information.
- C. Quality management plan.
- D. Work breakdown structure.

**Answer:** A

**NEW QUESTION 360**

- (Topic 2)

When should quality planning be performed?

- A. While developing the project charter
- B. In parallel with the other planning processes
- C. As part of a detailed risk analysis
- D. As a separate step from the other planning processes

**Answer:** B

**NEW QUESTION 365**

- (Topic 2)

The planned work contained in the lowest level of work breakdown structure (WBS) components is known as:

- A. Work packages.
- B. Accepted deliverables.
- C. The WBS dictionary.
- D. The scope baseline.

**Answer:** A

**NEW QUESTION 369**

- (Topic 2)

Which item is a formal proposal to modify any document, deliverable, or baseline?

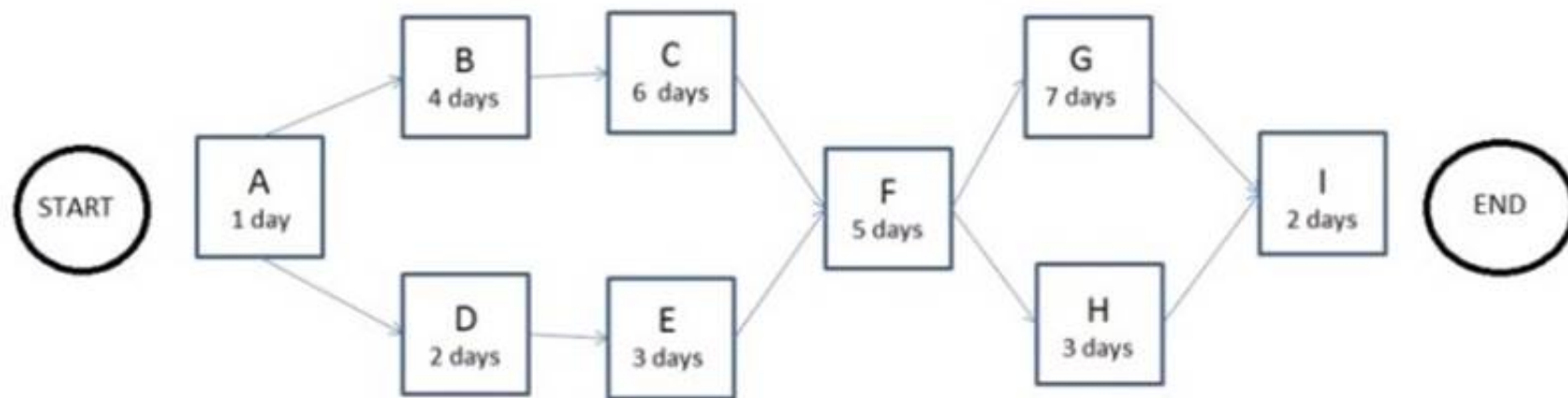
- A. Change request
- B. Requirements documentation
- C. Scope baseline
- D. Risk urgency assessment

**Answer:** A

**NEW QUESTION 374**

- (Topic 2)

The following is a network diagram for a project.



What is the critical path for the project?

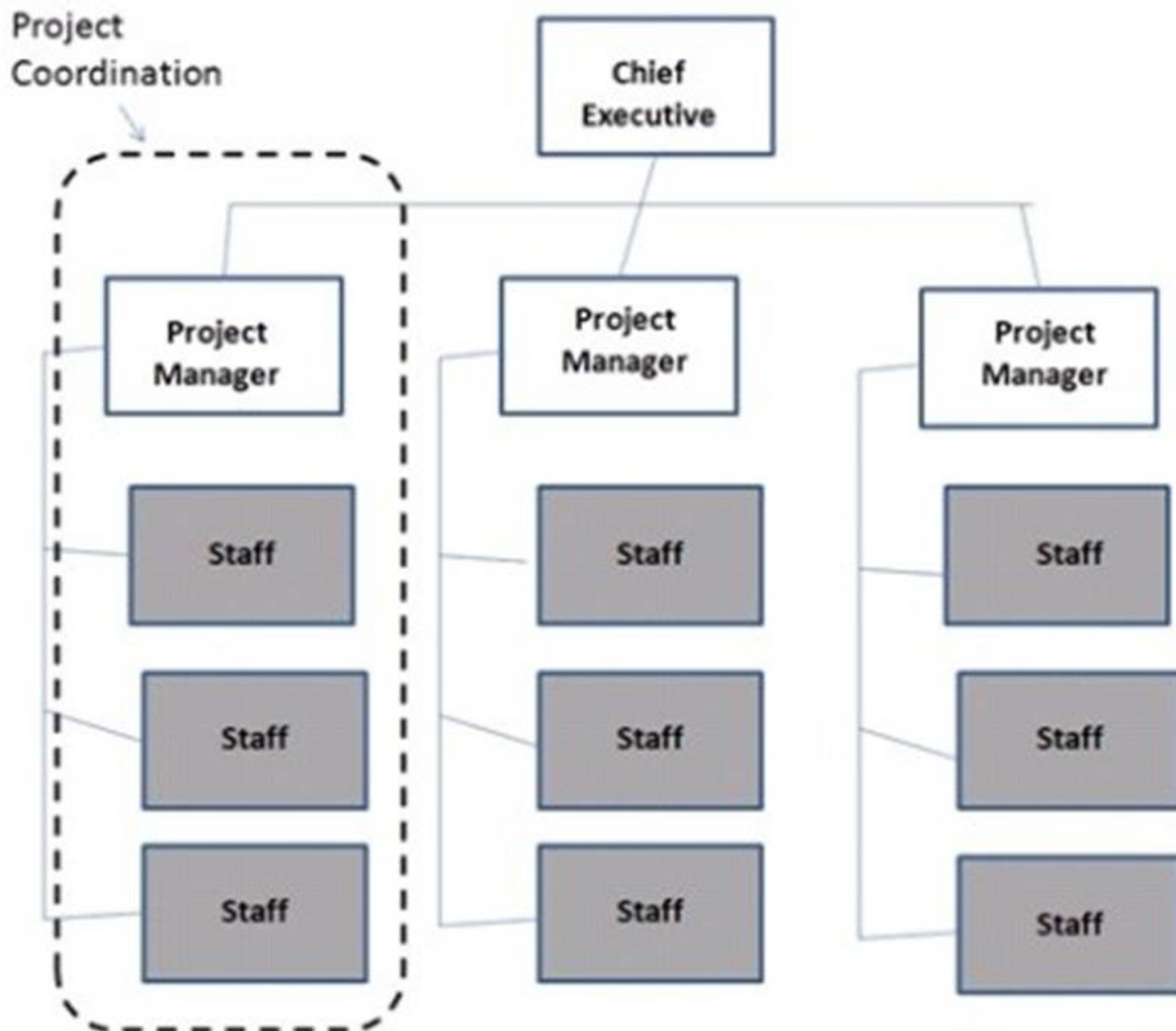
- A. A-B-C-F-G-I
- B. A-B-C-F-H-I
- C. A-D-E-F-G-I
- D. A-D-E-F-H-I

**Answer: A**

#### NEW QUESTION 375

- (Topic 2)

Which type of organizational structure is displayed in the diagram provided?



- A. Balanced matrix
- B. Projectized
- C. Strong matrix
- D. Functional

**Answer: B**

#### NEW QUESTION 377

- (Topic 2)

Which quality management and control tool is useful in visualizing parent-to-child relationships in any decomposition hierarchy that uses a systematic set of rules



that define a nesting relationship?

- A. Interrelationship digraphs
- B. Tree diagram
- C. Affinity diagram
- D. Network diagram

**Answer:** B

#### NEW QUESTION 380

- (Topic 2)

An output of the Create WBS process is:

- A. Scope baseline.
- B. Project scope statement.
- C. Organizational process assets.
- D. Requirements traceability matrix.

**Answer:** A

#### NEW QUESTION 382

- (Topic 2)

In a construction project schedule, what is the logical relationship between the delivery of the concrete materials and the pouring of concrete?

- A. Start-to-start (SS)
- B. Start-to-finish (SF)
- C. Finish-to-finish (FF)
- D. Finish-to-start (FS)

**Answer:** D

#### NEW QUESTION 386

- (Topic 2)

Inputs to the Plan Schedule Management process include:

- A. Organizational process assets and the project charter,
- B. Enterprise environmental factors and schedule tools.
- C. Time tables and Pareto diagrams.
- D. Activity attributes and resource calendars.

**Answer:** A

#### NEW QUESTION 391

- (Topic 2)

What is the total float of the critical path?

- A. Can be any number
- B. Zero or positive
- C. Zero or negative
- D. Depends on the calendar

**Answer:** C

#### NEW QUESTION 392

- (Topic 2)

A special type of bar chart used in sensitivity analysis for comparing the relative importance of the variables is called a:

- A. triangular distribution
- B. tornado diagram
- C. beta distribution
- D. fishbone diagram

**Answer:** B

#### NEW QUESTION 393

- (Topic 2)

Which document includes the project scope, major deliverables, assumptions, and constraints?

- A. Project charter
- B. Project scope statement
- C. Scope management plan
- D. Project document updates

**Answer:** B

#### NEW QUESTION 396



- (Topic 2)

For a project to be successful, the project team must do which of the following?

- A. Complete the project in sequential phases.
- B. Overlook minor stakeholders.
- C. Produce ongoing repetitive products, services, or results.
- D. Select the appropriate processes required to meet the project objective.

**Answer:** D

#### NEW QUESTION 397

- (Topic 2)

Using values such as scope, cost, budget, and duration or measures of scale such as size, weight, and complexity from a previous similar project as the basis for estimating the same parameter or measurement for a current project describes which type of estimating?

- A. Bottom-up
- B. Parametric
- C. Analogous
- D. Three-point

**Answer:** C

#### NEW QUESTION 398

- (Topic 2)

Create WBS is part of which of the following Knowledge Areas?

- A. Project Integration Management
- B. Project Scope Management
- C. Project Time Management
- D. Project Cost Management

**Answer:** B

#### NEW QUESTION 403

- (Topic 2)

A full-time project manager with low to moderate authority and part-time administrative staff is working in an organizational structure with which type of matrix?

- A. Strong
- B. Weak
- C. Managed
- D. Balanced

**Answer:** D

#### NEW QUESTION 408

- (Topic 2)

Funding limit reconciliation is a tool and technique of which Project Cost Management process?

- A. Estimate Costs
- B. Control Costs
- C. Plan Cost Management
- D. Determine Budget

**Answer:** D

#### NEW QUESTION 410

- (Topic 2)

Which stakeholder classification model groups stakeholders based on their level of authority and their active involvement in the project?

- A. Power/influence grid
- B. Power/interest grid
- C. Influence/impact grid
- D. Salience model

**Answer:** A

#### NEW QUESTION 413

- (Topic 2)

Which is an output from Distribute Information?

- A. Earned value analysis
- B. Trend analysis
- C. Project records
- D. Performance reviews

**Answer:** C

**NEW QUESTION 414**

- (Topic 2)

In an organization with a projectized organizational structure, who controls the project budget?

- A. Functional manager
- B. Project manager
- C. Program manager
- D. Project management office

**Answer:** B

**NEW QUESTION 419**

- (Topic 2)

Which document defines how a project is executed, monitored and controlled, and closed?

- A. Strategic plan
- B. Project charter
- C. Project management plan
- D. Service level agreement

**Answer:** C

**NEW QUESTION 420**

- (Topic 2)

Tools and techniques used for Plan Communications include the communication:

- A. requirements analysis, communication technology, communication models, and communication methods.
- B. methods, stakeholder register, communication technology, and communication models.
- C. requirements, communication technology, communication requirements analysis, and communication methods.
- D. management plan, communication technology, communication models, and communication requirements analysis.

**Answer:** A

**NEW QUESTION 422**

- (Topic 2)

Which Project Management Process Group includes Collect Requirements, Define Activities, Sequence Activities, Perform Qualitative Risk Analysis, and Perform Quantitative Risk Analysis?

- A. Initiating
- B. Monitoring and Controlling
- C. Planning
- D. Closing

**Answer:** C

**NEW QUESTION 427**

- (Topic 2)

The process of identifying and documenting the specific actions to be performed to produce the project deliverables is known as:

- A. Define Activities.
- B. Sequence Activities.
- C. Define Scope.
- D. Control Schedule.

**Answer:** A

**NEW QUESTION 429**

- (Topic 2)

Inputs to the Plan Risk Management process include the:

- A. cost management plan.
- B. risk management plan,
- C. activity list,
- D. risk register.

**Answer:** D

**NEW QUESTION 433**

- (Topic 2)

Which is an input to the Verify Scope process?

- A. Performance report
- B. Work breakdown structure (WBS)
- C. Requested changes
- D. Project management plan

**Answer:**

D

**NEW QUESTION 437**

- (Topic 2)

Which type of analysis systemically gathers and analyzes qualitative and quantitative information to determine which interests should be taken into account throughout the project?

- A. Product
- B. Cost-benefit
- C. Stakeholder
- D. Research

**Answer: C**

**NEW QUESTION 441**

- (Topic 3)

A project has an EV of 100 workdays, an AC of 120 workdays, and a PV of 80 workdays. What should be the concern?

- A. There is a cost underrun.
- B. There is a cost overrun.
- C. The project may not meet the deadline.
- D. The project is 20 days behind schedule.

**Answer: B**

**NEW QUESTION 443**

- (Topic 3)

Which of the following is an output of the Perform Integrated Change Control process?

- A. Project document updates
- B. Organizational process assets updates
- C. Change requests
- D. Deliverables

**Answer: A**

**NEW QUESTION 445**

- (Topic 3)

A risk may be graded into different priorities by which process?

- A. Risk monitoring and controlling
- B. Risk response planning
- C. Qualitative risk analysis
- D. Quantitative risk analysis

**Answer: C**

**NEW QUESTION 447**

- (Topic 3)

The precedence diagramming method (PDM) is also known as:

- A. Arrow Diagram.
- B. Critical Path Methodology (CPM).
- C. Activity-On-Node (AON).
- D. schedule network diagram.

**Answer: C**

**NEW QUESTION 451**

- (Topic 3)

What scope definition technique is used to generate different approaches to execute and perform the work of the project?

- A. Build v
- B. buy
- C. Expert judgment
- D. Alternatives identification
- E. Product analysis

**Answer: C**

**NEW QUESTION 455**

- (Topic 3)

What is the schedule performance index (SPI) using the following data? BAC = \$100,000 PV = \$50,000 AC = \$80,000 EV = \$40,000

- A. 1
- B. 0.4

- C. 0.5
- D. 0.8

**Answer:** D

**NEW QUESTION 457**

- (Topic 3)

Which illustrates the connection between work that needs to be done and its project team members?

- A. Work breakdown structure (WBS)
- B. Network diagrams
- C. Staffing management plan
- D. Responsibility assignment matrix (RAM)

**Answer:** D

**NEW QUESTION 458**

- (Topic 3)

What is the estimate at completion (EAC) if the budget at completion (BAC) is \$100, the actual cost (AC) is \$50, and the earned value (EV) is \$25?

- A. \$50
- B. \$100
- C. \$125
- D. \$200

**Answer:** D

**Explanation:**

$EAC = BAC / CPI$  and  $CPI = EV / AC$   $CPI = EV / AC = 25 / 50 = 0.5$

$EAC = BAC / CPI = 100 / 0.5 = \$200$

**NEW QUESTION 459**

- (Topic 3)

The project manager for XYZ stationers is sequencing the activities for the project to set up a new office. It is known from knowledge of best practices that it is better to wait for the painters to finish painting the walls before the new floors are installed. This is an example of which of the following types of dependency?

- A. Precedence
- B. Discretionary
- C. External
- D. Mandatory

**Answer:** B

**NEW QUESTION 460**

- (Topic 3)

Which of the following methods of performance review examines project performance over time to determine if performance is improving or deteriorating?

- A. Earned value performance
- B. Trend analysis
- C. Cost-benefit analysis
- D. Variance analysis

**Answer:** B

**NEW QUESTION 465**

- (Topic 3)

Which of the following types of a dependency determination is used to define the sequence of activities?

- A. Legal
- B. Discretionary
- C. Internal
- D. Resource

**Answer:** B

**NEW QUESTION 468**

- (Topic 3)

Which changes occur in risk and uncertainty as well as the cost of changes as the life cycle of a typical project progresses?

- A. Risk and uncertainty increase; the cost of changes increases.
- B. Risk and uncertainty increase; the cost of changes decreases.
- C. Risk and uncertainty decrease; the cost of changes increases.
- D. Risk and uncertainty decrease; the cost of changes decreases.

**Answer:** C

**NEW QUESTION 470**

- (Topic 3)

Which of the following correctly lists the configuration management activities included in the Integrated Change Control process?

- A. Configuration definition, configuration status accounting, configuration monitoring and control
- B. Configuration identification, configuration status accounting, configuration verification and audit
- C. Configuration identification, configuration status reporting, configuration verification and audit
- D. Configuration definition, configuration status reporting, configuration monitoring and Control

**Answer:** B

**NEW QUESTION 472**

- (Topic 3)

What is a deliverable-oriented, hierarchical decomposition of the work to be executed to accomplish the project objectives and create the required deliverables?

- A. Organizational breakdown structure (OBS)
- B. Work performance information
- C. Work package
- D. Work breakdown structure (WBS)

**Answer:** D

**NEW QUESTION 474**

- (Topic 3)

The process of monitoring the status of the project to update project progress and manage changes to the schedule baseline is:

- A. Control Schedule.
- B. Quality Control.
- C. Perform Integrated Change Control.
- D. Develop Schedule.

**Answer:** A

**NEW QUESTION 478**

- (Topic 3)

Which of the following is an example of push communication?

- A. Intranet sites
- B. Video conferencing
- C. Knowledge repositories
- D. Press releases

**Answer:** D

**NEW QUESTION 483**

- (Topic 3)

The PV is \$1000, EV is \$2000, and AC is \$1500. What is CPI?

- A. 1.33
- B. 2
- C. 0.75
- D. 0.5

**Answer:** A

**NEW QUESTION 484**

- (Topic 3)

After Define Activities and Sequence Activities, the next process is:

- A. Estimate Activity Resources.
- B. Estimate Activity Durations,
- C. Develop Schedule.
- D. Control Schedule.

**Answer:** A

**NEW QUESTION 489**

- (Topic 3)

Who determines which dependencies are mandatory during the Sequence Activities process?

- A. Project manager
- B. External stakeholders
- C. Internal stakeholders
- D. Project team

**Answer:**

D

**NEW QUESTION 491**

- (Topic 3)

A process is defined as:

- A. A set of interrelated actions and activities performed to achieve a certain objective.
- B. A set of guidelines that explains how to carry out a particular task.
- C. The inputs for a task and the tools and techniques required to carry out the task.
- D. A collection of logically related project activities, usually culminating in the completion of a major deliverable.

**Answer:** A

**NEW QUESTION 494**

- (Topic 3)

Which Define Activities output extends the description of the activity by identifying the multiple components associated with each activity?

- A. Project document updates
- B. Activity list
- C. Activity attributes
- D. Project calendars

**Answer:** C

**NEW QUESTION 498**

- (Topic 3)

The most commonly used type of precedence relationship in the precedence diagramming method (PDM) is:

- A. start-to-start (SS)
- B. start-to-finish (SF)
- C. finish-to-start (FS)
- D. finish-to-finish (FF)

**Answer:** C

**NEW QUESTION 500**

- (Topic 3)

Which type of analysis would be used for the Plan Quality process?

- A. Schedule
- B. Checklist
- C. Assumption
- D. Cost-Benefit

**Answer:** D

**NEW QUESTION 502**

- (Topic 3)

What is a tool and technique used in the Develop Project Management Plan process?

- A. Project management information system (PMIS)
- B. Project charter
- C. Quality assurance
- D. Expert judgment

**Answer:** D

**NEW QUESTION 505**

- (Topic 3)

Tools and techniques used in Direct and Manage Project Work include:

- A. Process analysis and expert judgment
- B. Analytical techniques and a project management information system
- C. Performance reviews and meetings
- D. Expert judgment and meetings

**Answer:** D

**NEW QUESTION 506**

- (Topic 3)

Which illustrates the connection between work that needs to be done and its project team members?

- A. Work breakdown structure
- B. Network diagrams
- C. Staffing management plan
- D. Responsibility matrix

**Answer:** D

**NEW QUESTION 510**

- (Topic 3)

The number of potential communication channels for a project with 5 stakeholders is:

- A. 10.
- B. 12.
- C. 20.
- D. 24.

**Answer:** A

**NEW QUESTION 511**

- (Topic 3)

How is scheduled variance calculated using the earned value technique?

- A. EV less AC
- B. AC less PV
- C. EV less PV
- D. AC less EV

**Answer:** C

**NEW QUESTION 516**

- (Topic 3)

Which technique is used in Perform Quantitative Risk Analysis?

- A. Sensitivity analysis
- B. Probability and impact matrix
- C. Risk data quality assessment
- D. Risk categorization

**Answer:** A

**NEW QUESTION 519**

- (Topic 3)

Who is responsible for developing the project management plan and all related component plans?

- A. Project team
- B. Portfolio manager
- C. Project manager
- D. Project management office

**Answer:** C

**NEW QUESTION 522**

- (Topic 3)

Which of the following is an example of schedule compression?

- A. Activity sequencing
- B. Resource leveling
- C. Lead and lag adjusting
- D. Crashing

**Answer:** D

**NEW QUESTION 525**

- (Topic 3)

To which process is work performance information an input?

- A. Administer Procurements
- B. Direct and Manage Project Execution
- C. Create WBS
- D. Perform Qualitative Risk Analysis

**Answer:** C

**NEW QUESTION 528**

- (Topic 3)

Which Process Group contains the processes performed to complete the work defined in the project management plan to satisfy the project specifications?

- A. Initiating
- B. Planning
- C. Executing



D. Closing

**Answer: C**

**NEW QUESTION 533**

- (Topic 3)

Which of the following are documented directions to perform an activity that can reduce the probability of negative consequences associated with project risks?

- A. Recommended corrective actions
- B. Recommended preventive actions
- C. Risk audits
- D. Risk reassessments

**Answer: B**

**NEW QUESTION 535**

- (Topic 3)

A car company authorized a project to build more fuel-efficient cars in response to gasoline shortages. With which of the following strategic considerations was this project mainly concerned?

- A. Market demand
- B. Legal requirements
- C. Strategic Opportunity
- D. Technological advance

**Answer: A**

**NEW QUESTION 540**

- (Topic 3)

Typical outcomes of a project include:

- A. Products, services, and improvements.
- B. Products, programs, and services.
- C. Improvements, portfolios, and services.
- D. Improvements, processes, and products.

**Answer: A**

**NEW QUESTION 544**

- (Topic 3)

A project management office manages a number of aspects including the:

- A. Project scope, schedule, cost, and quality of the products of the work packages.
- B. Central coordination of communication management across projects.
- C. Assignment of project resources to best meet project objectives.
- D. Overall risk, overall opportunity, and interdependencies among projects at the enterprise level.

**Answer: D**

**NEW QUESTION 547**

- (Topic 3)

Which of the following tools will be used to produce performance reports that provide information to stakeholders about project cost, schedule progress, and performance?

- A. Communications methods
- B. Reporting systems
- C. Forecasting methods
- D. Variance analysis

**Answer: B**

**NEW QUESTION 551**

- (Topic 3)

Which process should be conducted from the project inception through completion?

- A. Monitor and Control Project Work
- B. Perform Quality Control
- C. Perform Integrated Change Control
- D. Monitor and Control Risks

**Answer: C**

**NEW QUESTION 556**

- (Topic 3)

Regression analysis, failure mode and effect analysis (FMEA), fault tree analysis (FTA), and trend analysis are examples of which tool or technique?

- A. Expert judgment
- B. Forecasting methods
- C. Earned value management
- D. Analytical techniques

**Answer:** D

**NEW QUESTION 558**

- (Topic 3)

Which of the following is a schematic display of the project's schedule activities and the logical relationships among them?

- A. Gantt chart
- B. Project schedule network diagram
- C. Project milestone list
- D. Activity list

**Answer:** B

**NEW QUESTION 559**

- (Topic 3)

In which domain of project management would a Pareto chart provide useful information?

- A. Project Scope Management
- B. Project Time Management
- C. Project Communications Management
- D. Project Quality Management

**Answer:** D

**NEW QUESTION 563**

- (Topic 3)

What are assigned risk ratings based upon?

- A. Root cause analysis
- B. Assessed probability and impact
- C. Expert judgment
- D. Risk Identification

**Answer:** B

**NEW QUESTION 564**

- (Topic 3)

Activities on the critical path have which type of float?

- A. Zero free float
- B. Zero or negative float
- C. Negative and positive float
- D. Zero or positive float

**Answer:** B

**NEW QUESTION 567**

- (Topic 3)

Who is responsible for reviewing change requests and approving or rejecting the change requests?

- A. Change control board
- B. Project manager
- C. Project management office
- D. Project sponsor

**Answer:** B

**NEW QUESTION 569**

- (Topic 3)

How many Project Management Process Groups are there?

- A. 3
- B. 4
- C. 5
- D. 6

**Answer:** C

**NEW QUESTION 574**

- (Topic 3)

To please the customer, a project team member delivers a requirement which is uncontrolled. This is not part of the plan. This describes:

- A. scope creep.
- B. a change request.
- C. work performance information.
- D. deliverables.

**Answer:** A

#### NEW QUESTION 579

- (Topic 3)

Which of the following is an input of the Define Activities process?

- A. Scope baseline
- B. Milestone list
- C. Resource calendars
- D. Activity list

**Answer:** A

#### NEW QUESTION 581

- (Topic 3)

Which document describes the procurement item in sufficient detail to allow prospective sellers to determine if they are capable of providing the products, services, or results?

- A. Procurement management plan
- B. Procurement statement of work
- C. Request for proposal
- D. Request for quote

**Answer:** B

#### NEW QUESTION 585

- (Topic 3)

Which of the following is an input to Direct and Manage Project Execution?

- A. Performance reports
- B. Project charter
- C. Outputs from planning processes
- D. Enterprise environmental factors

**Answer:** D

#### NEW QUESTION 588

- (Topic 3)

The process of obtaining seller responses, selecting a seller, and awarding a contract is called:

- A. Close Procurements.
- B. Control Procurements.
- C. Plan Procurements.
- D. Conduct Procurements.

**Answer:** D

#### NEW QUESTION 593

- (Topic 3)

A project manager at a publishing company decides to initiate the editing phase of the project as soon as each chapter is written. Which type of Sequence Activities tool and technique is involved, considering that there was a start-to-start relationship with a 15-day delay?

- A. Slack
- B. Float
- C. Lag
- D. Lead

**Answer:** C

#### NEW QUESTION 596

- (Topic 3)

Project Management Process Groups are linked by:

- A. the outputs they produce
- B. discrete or one-time events
- C. the project management plan
- D. common tools and techniques

**Answer:** A

**NEW QUESTION 598**

- (Topic 3)

Which of the following is an input into the Develop Project Team process?

- A. Enterprise environmental factors
- B. Organizational process assets
- C. Project staff assignments
- D. Performance reports

**Answer:** C

**NEW QUESTION 603**

- (Topic 3)

Which of the following are inputs into the Administer Procurements process?

- A. Payment systems, organizational process assets update, and claims administration
- B. Inspections and audits, contract change control system, and project management plan updates
- C. Procurement documents, performance reports, and approved change requests
- D. Project documents, seller proposals, and payment systems

**Answer:** C

**NEW QUESTION 606**

- (Topic 3)

Which of the following involves making information available to project stakeholders in a timely manner?

- A. Plan Communications
- B. Performance reporting
- C. Project status reports
- D. Distribute Information

**Answer:** D

**NEW QUESTION 608**

- (Topic 3)

Which tool or technique is effective in a project in which the deliverable is not a service or result?

- A. Inspection
- B. Variance analysis
- C. Decomposition
- D. Product analysis

**Answer:** D

**NEW QUESTION 610**

- (Topic 3)

Project management processes are:

- A. Static; they must not change across different projects.
- B. Applied globally and across all industry groups.
- C. Discrete elements with well-defined interfaces.
- D. Project phases, applied as required in different projects.

**Answer:** B

**NEW QUESTION 614**

- (Topic 3)

Fast tracking is a schedule compression technique used to shorten the project schedule without changing project scope. Which of the following can result from fast tracking?

- A. The risk of achieving the shortened project time is increased.
- B. The critical path will have positive total float.
- C. Contingency reserves are released for redeployment by the project manager.
- D. Duration buffers are added to maintain a focus on planned activity durations.

**Answer:** A

**NEW QUESTION 616**

- (Topic 3)

Which of the following factors is lowest at the start of the project?

- A. Cost of changes
- B. Stakeholder influences
- C. Risk
- D. Uncertainty

**Answer:**

A

**NEW QUESTION 621**

- (Topic 3)

Which tool or technique measures performance of the project as it moves from project initiation through project closure?

- A. Resource leveling
- B. Parametric measuring
- C. Pareto chart
- D. Earned value

**Answer: D**

**NEW QUESTION 625**

- (Topic 3)

Which of the following is an output of the Conduct Procurements process?

- A. Project statement of work
- B. Selected sellers
- C. Risk register updates
- D. Teaming agreements

**Answer: B**

**NEW QUESTION 626**

- (Topic 3)

The Human Resource Management processes are:

- A. Develop Human Resource Plan, Acquire Project Team, Develop Project Team, and Manage Project Team.
- B. Acquire Project Team, Manage Project Team, Manage Stakeholder Expectations, and Develop Project Team.
- C. Acquire Project Team, Develop Human Resource Plan, Conflict Management, and Manage Project Team.
- D. Develop Project Team, Manage Project Team, Estimate Activity Resources, and Acquire Project Team.

**Answer: A**

**NEW QUESTION 628**

- (Topic 3)

Which schedule development tool and technique produces a theoretical early start date and late start date?

- A. Critical path method
- B. Variance analysis
- C. Schedule compression
- D. Schedule comparison bar charts

**Answer: A**

**NEW QUESTION 631**

- (Topic 3)

Which of the following procurement processes results in the awarding of a procurement contract?

- A. Administer Procurements
- B. Close Procurements
- C. Conduct Procurements
- D. Plan Procurements

**Answer: C**

**NEW QUESTION 632**

- (Topic 3)

Using the three-point estimating technique, if the most likely duration is four months, the optimistic duration is two months, and the pessimistic duration is one year, how many months is the expected activity duration?

- A. Two
- B. Four
- C. Five
- D. Twelve

**Answer: C**

**NEW QUESTION 636**

- (Topic 3)

A method to manage stakeholder expectations in the scope statement is to clearly:

- A. state the guiding principles of the organization.
- B. identify alternatives to generate different approaches.
- C. state what is out of scope.

D. outline the results of the Delphi technique.

**Answer:** C

**NEW QUESTION 638**

- (Topic 3)

Information distribution involves making needed information available to project stakeholders in a timely manner. What is an output from information distribution?

- A. Earned value analysis
- B. Trend analysis
- C. Project records
- D. Performance reviews

**Answer:** C

**NEW QUESTION 643**

- (Topic 3)

Which tools or techniques will a project manager use for Develop Project Team?

- A. Negotiation
- B. Roles and responsibilities
- C. Recognition and rewards
- D. Prizing and promoting

**Answer:** C

**NEW QUESTION 646**

- (Topic 3)

Inputs to the Define Activities process include:

- A. Project scope statement, resource calendars, and work performance information.
- B. Scope baseline, enterprise environmental factors, and organizational process assets.
- C. Project scope statement, approved change requests, and WBS dictionary.
- D. Scope baseline, enterprise environmental factors, and activity duration estimates.

**Answer:** B

**NEW QUESTION 649**

- (Topic 3)

The three types of estimates that PERT uses to define an approximate range for an activity's cost are:

- A. Parametric, most likely, and analogous.
- B. Least likely, analogous, and realistic.
- C. Parametric, optimistic, and pessimistic.
- D. Most likely, optimistic, and pessimistic.

**Answer:** D

**NEW QUESTION 654**

- (Topic 3)

Which type of manager is assigned by the performing organization to lead the team that is responsible for achieving the project objectives?

- A. Program
- B. Functional
- C. Project
- D. Portfolio

**Answer:** C

**NEW QUESTION 657**

- (Topic 3)

The traditional organization chart structure that can be used to show positions and relationships in a graphic top-down format is called a:

- A. Responsible, accountable, consult, and inform (RACI) chart.
- B. Matrix-based chart.
- C. Human resource chart.
- D. Hierarchical-type chart.

**Answer:** D

**NEW QUESTION 658**

- (Topic 3)

An input to the Identify Stakeholders process is:

- A. The project management plan.

- B. The stakeholder register.
- C. Procurement documents.
- D. Stakeholder analysis.

**Answer:** C

**NEW QUESTION 662**

- (Topic 3)

Issue change requests and adapt approved changes into the project's scope, plans, and environment is an activity included in which of the following project management processes?

- A. Direct and Manage Project Execution
- B. Monitor and Control Project Work
- C. Perform Integrated Change Control
- D. Monitor and Control Risks

**Answer:** A

**NEW QUESTION 667**

- (Topic 3)

Resource calendars are included in the:

- A. staffing management plan.
- B. work breakdown structure (WBS).
- C. project communications plan.
- D. project charter.

**Answer:** A

**NEW QUESTION 668**

- (Topic 3)

Which process involves identifying and documenting the logical relationships between project activities?

- A. Develop Schedule
- B. Sequence Activities
- C. Create WBS
- D. Applying leads and lags

**Answer:** B

**NEW QUESTION 671**

- (Topic 3)

Based on the following metrics: EV= \$20,000, AC= \$22,000, and PV= \$28,000, what is the project CV?

- A. -8000
- B. -2000
- C. 2000
- D. 8000

**Answer:** B

**NEW QUESTION 674**

- (Topic 3)

A tool or technique in Perform Quality Control that a project manager would use is:

- A. quality audits.
- B. process analysis.
- C. benchmarking.
- D. inspection.

**Answer:** D

**NEW QUESTION 675**

- (Topic 3)

Your project has an EV of 100 work-days, an AC of 120 work-days, and a PV of 80 work days. What should be your concern?

- A. There is a cost under run.
- B. There is a cost overrun.
- C. May not meet deadline.
- D. The project is 20 days behind schedule.

**Answer:** B

**NEW QUESTION 679**

- (Topic 3)



What is the tool and technique used to request seller responses?

- A. Procurement documents
- B. Expert judgment
- C. Bidder conferences
- D. Contract types

**Answer:** C

**NEW QUESTION 684**

- (Topic 3)

The most appropriate project life cycle model for an environment with a high level of change and extensive stakeholder involvement in projects is:

- A. adaptive
- B. reflexive
- C. predictive
- D. iterative

**Answer:** A

**NEW QUESTION 687**

- (Topic 3)

Expected monetary value (EMV) is computed by which equation?

- A. Value of each possible outcome multiplied by probability of occurrence
- B. Value of each possible outcome multiplied by probability of non-occurrence
- C. Multiplying the value of each possible outcome by the probability of occurrence and adding the products together
- D. Multiplying the value of each possible outcome by the probability of non-occurrence and adding the products together

**Answer:** C

**NEW QUESTION 691**

- (Topic 3)

Which of the following is an output of Direct and Manage Project Execution?

- A. Project management plan
- B. Change request status updates
- C. Organizational process assets updates
- D. Work performance information

**Answer:** D

**NEW QUESTION 692**

- (Topic 3)

Which tool and technique is used in Conduct Procurements?

- A. Teaming agreements
- B. Expert judgment
- C. Bidder conferences
- D. Contract types

**Answer:** C

**NEW QUESTION 694**

- (Topic 3)

Within project integration management, the statement of work (SOW) references which aspects of the project?

- A. Strategic plan, business need, and product scope description
- B. Contract, enterprise environmental factors, and organizational process assets
- C. Business plan, project management plan, and project schedule
- D. Product lifecycle, business objective, and management strategy

**Answer:** A

**NEW QUESTION 696**

- (Topic 3)

Which tool within the Perform Quality Control process identifies whether or not a process has a predictable performance?

- A. Cause and effect diagram
- B. Control charts
- C. Pareto chart
- D. Histogram

**Answer:** B

**NEW QUESTION 699**

- (Topic 3)

An intentional activity to modify a nonconforming product or product component is called:

- A. defect repair
- B. work repair
- C. corrective action
- D. preventive action

**Answer:** A

**NEW QUESTION 703**

- (Topic 3)

To which process is work performance information an input?

- A. Contract administration
- B. Direction and management of project execution
- C. Create WBS
- D. Qualitative risk analysis

**Answer:** A

**NEW QUESTION 706**

- (Topic 3)

Which input provides suppliers with a clear set of goals, requirements, and outcomes?

- A. Procurement statement of work
- B. Purchase order
- C. Source selection criteria
- D. Bidder conference

**Answer:** A

**NEW QUESTION 708**

- (Topic 3)

Which of the following is an input to the Direct and Manage Project Execution process?

- A. Approved change requests
- B. Approved contract documentation
- C. Work performance information
- D. Rejected change requests

**Answer:** A

**NEW QUESTION 709**

- (Topic 3)

The integrative nature of project management requires which Process Group to interact with the other Process Groups?

- A. Planning
- B. Executing
- C. Monitoring and Controlling
- D. Project Management

**Answer:** C

**NEW QUESTION 712**

- (Topic 3)

Variance and trend analysis is a tool and technique used in which process?

- A. Perform Qualitative Risk Analysis
- B. Perform Quantitative Risk Analysis
- C. Control Risks
- D. Plan Risk Responses

**Answer:** C

**NEW QUESTION 713**

- (Topic 3)

Which of the Perform Quality Assurance tools and techniques may enhance the creation of the work breakdown structure (WBS) to give structure to the decomposition of the scope?

- A. Activity network diagrams
- B. Affinity diagrams
- C. Matrix diagrams
- D. Interrelationship digraphs

**Answer:** B

**NEW QUESTION 714**

- (Topic 3)

Which quality tool incorporates the upper and lower specification limits allowed within an agreement?

- A. Control chart
- B. Flowchart
- C. Checksheet
- D. Pareto diagram

**Answer:** A

**NEW QUESTION 718**

- (Topic 3)

The project manager at an organization has just realized that some of the engineering staff has been allocated to project Y and will not be available to finish task X. The project manager has also discovered that at the current pace, it will not be possible to complete the project on time. Due to cost constraints, hiring more work force is not a viable option. Which tools are at the manager's disposal?

- A. Resource leveling and fast tracking
- B. Fast tracking and crashing
- C. Crashing and applying leads and lags
- D. Scheduling tools and applying leads and lags

**Answer:** A

**NEW QUESTION 719**

- (Topic 3)

The basis of identification for current or potential problems to support later claims or new procurements is provided by:

- A. A risk urgency assessment.
- B. The scope baseline.
- C. Work performance information.
- D. Procurement audits.

**Answer:** C

**NEW QUESTION 723**

- (Topic 3)

Which tool and technique is used in Conduct Procurements?

- A. Teaming agreements
- B. Expert judgment
- C. Bidder conferences
- D. Contract types

**Answer:** C

**NEW QUESTION 728**

- (Topic 3)

Activity resource requirements and the resource breakdown structure (RBS) are outputs of which Project Time Management process?

- A. Control Schedule
- B. Define Activities
- C. Develop Schedule
- D. Estimate Activity Resources

**Answer:** D

**NEW QUESTION 732**

- (Topic 3)

When managing a project team, what helps to reduce the amount of conflict?

- A. Clear role definition
- B. Negotiation
- C. Risk response planning
- D. Team member replacement

**Answer:** A

**NEW QUESTION 736**

- (Topic 3)

Approved change requests, approved corrective actions, and updates to organizational process assets are all outputs of which project management process?

- A. Risk response planning
- B. Manage stakeholders
- C. Scope definition
- D. Performance reporting

**Answer:** B

**NEW QUESTION 740**

- (Topic 3)

Change requests, project management plan updates, project document updates, and organizational process assets updates are all outputs of which project management process?

- A. Plan Risk Responses
- B. Manage Stakeholder Expectations
- C. Define Scope
- D. Report Performance

**Answer:** B

**NEW QUESTION 741**

- (Topic 3)

A project manager requesting industry groups and consultants to recommend project intervention is relying on:

- A. Communication models.
- B. Stakeholder participation.
- C. Expert judgment
- D. Enterprise environmental factors.

**Answer:** C

**NEW QUESTION 743**

- (Topic 4)

An output of Control Schedule is:

- A. A project schedule network diagram
- B. A schedule management plan
- C. Schedule data
- D. Schedule forecasts

**Answer:** D

**NEW QUESTION 748**

- (Topic 4)

The purpose of the Project Communications Management Knowledge Area is to:

- A. Monitor and control communications throughout the entire project life cycle.
- B. Maintain an optimal flow of information among all project participants.
- C. Develop an appropriate approach for project communications.
- D. Ensure timely and appropriate collection of project information.

**Answer:** D

**NEW QUESTION 751**

- (Topic 4)

The review of a sellers progress toward achieving the goals of scope and quality within cost and schedule compared to the contract is known as:

- A. Work performance information.
- B. Inspections and audits.
- C. Payment systems.
- D. Procurement performance reviews.

**Answer:** D

**NEW QUESTION 752**

- (Topic 4)

Which of the following outputs from the Schedule Control process aids in the communication of SV, SPI or any performance status to stakeholders?

- A. Performance organizations
- B. Schedule baselines
- C. Performance measurements
- D. Change requests

**Answer:** C

**NEW QUESTION 753**

- (Topic 4)

Which tool or technique is used in the Perform Integrated Change Control process?

- A. Decomposition
- B. Modeling techniques

- C. Resource optimization
- D. Meetings

**Answer:** D

**NEW QUESTION 757**

- (Topic 4)

A risk response strategy in which the project team shifts the impact of a threat, together with ownership of the response, to a third party is called:

- A. mitigate
- B. accept
- C. transfer
- D. avoid

**Answer:** C

**NEW QUESTION 758**

- (Topic 4)

On what is project baseline development established?

- A. Approved product requirements
- B. Estimated project cost and schedule
- C. Actual project cost and schedule
- D. Revised project cost and schedule

**Answer:** B

**NEW QUESTION 763**

- (Topic 4)

Scope, schedule, and cost parameters are integrated in the:

- A. Performance measurement baseline.
- B. Analysis of project forecasts,
- C. Summary of changes approved in a period,
- D. Analysis of past performance.

**Answer:** A

**NEW QUESTION 765**

- (Topic 4)

Activity cost estimates and the project schedule are inputs to which Project Cost Management process?

- A. Estimate Costs
- B. Control Costs
- C. Plan Cost Management
- D. Determine Budget

**Answer:** D

**NEW QUESTION 770**

- (Topic 4)

Which of the following is a tool and technique used to monitor risk?

- A. Technical performance measurement
- B. Cost performance baseline
- C. Benchmarking
- D. Cost of quality

**Answer:** A

**NEW QUESTION 772**

- (Topic 4)

Which item is an input to the Define Activities process?

- A. Schedule data
- B. Activity list
- C. Risk register
- D. Scope baseline

**Answer:** D

**NEW QUESTION 775**

- (Topic 4)

Which quality control technique illustrates the 80/20 principle?

- A. Ishikawa diagram
- B. Control chart
- C. Run chart
- D. Pareto chart

**Answer:** D

**NEW QUESTION 778**

- (Topic 4)

What is the term assigned to products or services having the same functional use but different technical characteristics?

- A. Scope
- B. Quality
- C. Specification
- D. Grade

**Answer:** D

**NEW QUESTION 782**

- (Topic 4)

Which output of Project Cost Management consists of quantitative assessments of the probable costs required to complete project work?

- A. Activity cost estimates
- B. Earned value management
- C. Cost management plan
- D. Cost baseline

**Answer:** A

**NEW QUESTION 787**

- (Topic 4)

Which group is formally chartered and responsible for reviewing, evaluating, approving, delaying, or rejecting changes to the project and for recording and communicating decisions?

- A. Project team
- B. Focus group
- C. Change control board
- D. Project stakeholders

**Answer:** C

**NEW QUESTION 792**

- (Topic 4)

Schedule milestones and a predefined budget are examples of:

- A. Project constraints.
- B. Requirements documentation.
- C. Organizational process assets.
- D. Activity cost estimates.

**Answer:** A

**NEW QUESTION 795**

- (Topic 4)

What happens to a stakeholder's project influence over time?

- A. Increases
- B. Decreases
- C. Stays the same.
- D. Has no bearing.

**Answer:** B

**NEW QUESTION 796**

- (Topic 4)

What is the critical chain method?

- A. A technique to calculate the theoretical early start and finish dates and late start and finish dates
- B. A schedule network analysis technique that modifies the project schedule to account for limited resources
- C. A schedule compression technique that analyzes cost and schedule trade-offs to determine how to obtain the greatest amount of compression for the least incremental cost
- D. A technique to estimate project duration when there is a limited amount of detailed information about the project

**Answer:** B

**NEW QUESTION 801**

- (Topic 4)

The key benefit of the Monitoring and Controlling Process Group is the ability to:

- A. establish and manage project communication channels, both external and internal to the project team.
- B. influence the stakeholders that want to circumvent integrated change control so that their changes are implemented.
- C. monitor the ongoing project team against the team performance assessments and the project performance baseline.
- D. observe and measure project performance regularly and consistently to identify variances from the project management plan.

**Answer:** D

#### NEW QUESTION 802

- (Topic 4)

Which standard examines an enterprise's project management process capabilities?

- A. PMBOK Guide
- B. The Standard for Program Management
- C. Organizational Project Management Maturity Model "OPMJ"
- D. The Standard for Portfolio Management

**Answer:** C

#### NEW QUESTION 806

- (Topic 4)

An element of the modern quality management approach used to achieve compatibility with the International Organization for Standardization (ISO) is known as:

- A. Forecasting,
- B. Brainstorming.
- C. Historical databases.
- D. Cost of quality.

**Answer:** D

#### NEW QUESTION 807

- (Topic 4)

The CPI is .92, and the EV is US\$172,500. What is the actual cost of the project?

- A. US\$158,700
- B. US\$172,500
- C. US\$187,500
- D. US\$245,600

**Answer:** C

#### NEW QUESTION 811

- (Topic 4)

Which schedule development technique modifies the project schedule to account for limited resources?

- A. Human resource planning
- B. Fast tracking
- C. Critical chain method
- D. Rolling wave planning

**Answer:** C

#### NEW QUESTION 814

- (Topic 4)

The degree, amount, or volume of risk that an organization or individual will withstand is known as its risk:

- A. Analysis
- B. Appetite
- C. Tolerance
- D. Response

**Answer:** C

#### NEW QUESTION 815

- (Topic 4)

Which key interpersonal skill of a project manager is defined as the strategy of sharing power and relying on interpersonal skills to convince others to cooperate toward common goals?

- A. Collaboration
- B. Negotiation
- C. Decision making
- D. Influencing

**Answer:** D



**NEW QUESTION 816**

- (Topic 4)

The purpose of inspection in Perform Quality Control is to keep errors:

- A. in line with a measured degree of conformity.
- B. out of the hands of the customer.
- C. in a specified range of acceptable results.
- D. out of the process.

**Answer:** C

**NEW QUESTION 820**

- (Topic 4)

Which action is included in the Control Costs process?

- A. Identify how the project costs will be planned, structured, and controlled
- B. Determine policies, objectives, and responsibilities to satisfy stakeholder needs
- C. Develop an approximation of the monetary resources needed to complete project activities
- D. Monitor cost performance to isolate and understand variances from the approved cost baseline

**Answer:** D

**NEW QUESTION 822**

- (Topic 4)

Which Process Group's purpose is to track, review, and regulate the progress and performance of the project; identify any areas in which changes to the plan are required; and initiate the corresponding changes?

- A. Monitoring and Controlling
- B. Initiating
- C. Planning
- D. Executing

**Answer:** A

**NEW QUESTION 826**

- (Topic 4)

Which type of dependency used in the Sequence Activities process is sometimes referred to as preferred logic, preferential logic, or soft logic?

- A. Internal
- B. External
- C. Discretionary
- D. Mandatory

**Answer:** C

**NEW QUESTION 829**

- (Topic 4)

Using the following data, what is the Schedule Performance Index (SPI)? EV= \$500 PV= \$750 AC= \$1000 BAC= \$1200

- A. 0.67
- B. 1.5
- C. 0.75
- D. 0.5

**Answer:** A

**NEW QUESTION 830**

- (Topic 4)

Outputs of the Control Communications process include:

- A. expert judgment and change requests
- B. work performance information and change requests
- C. project management plan updates and work performance information
- D. issue logs and organizational process assets updates

**Answer:** B

**NEW QUESTION 835**

- (Topic 4)

When a control chart is used to monitor performance of a process, which of the following will be set by the project manager and the appropriate stakeholders to reflect the point(s) at which corrective action will be taken to prevent exceeding the specification limits?

- A. Upper and lower control limits
- B. Upper and lower specification limits
- C. Process mean
- D. Data points

**Answer:** A

**NEW QUESTION 839**

- (Topic 4)

Which technique is utilized in the Schedule Control process?

- A. Performance Measure
- B. Baseline Schedule
- C. Schedule Comparison
- D. Variance Analysis

**Answer:** D

**NEW QUESTION 844**

- (Topic 4)

Which Develop Schedule tool and technique produces a theoretical early start date and late start date?

- A. Critical path method
- B. Variance analysis
- C. Schedule compression
- D. Schedule comparison bar charts

**Answer:** A

**NEW QUESTION 847**

- (Topic 4)

Cost aggregation is typically performed by aggregating work packages in accordance with the:

- A. Program evaluation and review technique (PERT).
- B. Cost of quality (COQ).
- C. Rough order of magnitude (ROM).
- D. Work breakdown structure (WBS).

**Answer:** D

**NEW QUESTION 852**

- (Topic 4)

Which type of analysis is used to examine project results through time to determine if performance is improving or deteriorating?

- A. Control chart
- B. Earned value
- C. Variance
- D. Trend

**Answer:** D

**NEW QUESTION 855**

- (Topic 4)

Under which type of contract does the seller receive reimbursement for all allowable costs for performing contract work, as well as a fixed-fee payment calculated as a percentage of the initial estimated project costs?

- A. Cost Plus Fixed Fee Contract (CPFF)
- B. Cost Plus Incentive Fee Contract (CPIF)
- C. Firm Fixed Price Contract (FFP)
- D. Fixed Price with Economic Price Adjustment Contract (FP-EPA)

**Answer:** A

**NEW QUESTION 858**

- (Topic 4)

Using parametric estimating, if an assigned resource is capable of producing 120 units per hour, how many hours are required to produce 12,000 units?

- A. 100
- B. 120
- C. 1,000
- D. 1,200

**Answer:** A

**NEW QUESTION 863**

- (Topic 4)

Organizational process assets, a lessons-learned database, and historical information are all inputs to which process?

- A. Plan Cost Management
- B. Plan Scope Management

- C. Plan Stakeholder Management
- D. Plan Schedule Management

**Answer:** C

**NEW QUESTION 868**

- (Topic 4)

The chart below is an example of a:

ID	Requirements Description	Project Objectives	WBS Deliverables	Product Design	Product Development	Test Cases
001						
002						
003						

- A. Responsibility assignment matrix (RAM)
- B. Work breakdown structure (WBS)
- C. RACI chart
- D. Requirements traceability matrix

**Answer:** D

**NEW QUESTION 871**

- (Topic 4)

Which estimating technique uses the actual costs of previous similar projects as a basis for estimating the costs of the current project?

- A. Analogous
- B. Parametric
- C. Bottom-up
- D. Top-down

**Answer:** A

**NEW QUESTION 872**

- (Topic 4)

Which of the following schedule network analysis techniques is applied when a critical path method calculation has been completed and resources availability is critical?

- A. Applying calendars
- B. Resource leveling
- C. Resource planning
- D. Resource conflict management

**Answer:** B

**NEW QUESTION 875**

- (Topic 4)

Plan-do-check-act is also known as:

- A. prevention over inspection.
- B. statistical sampling.
- C. management responsibility,
- D. continuous improvement.

**Answer:** D

**NEW QUESTION 880**

- (Topic 4)

Which type of dependency is established based on knowledge of best practices within a particular application area or some unusual aspect of the project in which a specific sequence is desired, even though there may be other acceptable sequences?

- A. External
- B. Internal
- C. Mandatory
- D. Discretionary

**Answer:** D

**NEW QUESTION 885**

- (Topic 4)

Cost variance (CV) is equal to earned value:

- A. Minus actual cost [EV - AC].
- B. Minus planned value [EV - PV].
- C. Divided by actual cost [EV/AC].
- D. Divided by planned value [EV/PV].

**Answer:** A

#### NEW QUESTION 887

- (Topic 4)

Which technique helps to determine the risks that have the most potential impact on a project?

- A. Cost risk simulation analysis
- B. Expected monetary value analysis
- C. Modeling and simulation
- D. Sensitivity analysis

**Answer:** D

#### NEW QUESTION 890

- (Topic 4)

A project requires a component with well-understood specifications. Performance targets are established at the outset, and the final contract price is determined after completion of all work based on the seller's performance. The most appropriate agreement with the supplier is:

- A. Cost Plus Incentive Fee (CPIF).
- B. Fixed Price Incentive Fee (FPIF).
- C. Cost Plus Award Fee (CPAF).
- D. Fixed Price with Economic Price Adjustment (FP-EPA).

**Answer:** B

#### NEW QUESTION 894

- (Topic 4)

What is the minimum a project schedule must include?

- A. Variance analysis
- B. A planned start date and a planned finish date for each schedule activity
- C. A critical path diagram
- D. Critical chain analysis

**Answer:** B

#### NEW QUESTION 899

- (Topic 4)

What is the name of the statistical method that helps identify which factors may influence specific variables of a product or process under development or in production?

- A. Failure modes and effects analysis
- B. Design of experiments
- C. Quality checklist
- D. Risk analysis

**Answer:** B

#### NEW QUESTION 903

- (Topic 4)

Which enterprise environmental factors may influence Plan Schedule Management?

- A. Cultural views regarding time schedules and professional and ethical behaviors
- B. Historical information and change control procedures
- C. Risk control procedures and the probability and impact matrix
- D. Resource availability and organizational culture and structure

**Answer:** D

#### NEW QUESTION 905

- (Topic 4)

While processes in the Planning Process Group seek to collect feedback and define project documents to guide project work, organizational procedures dictate when the project planning:

- A. ends.
- B. begins.
- C. delays.
- D. deviates.

**Answer:** A

**NEW QUESTION 906**

- (Topic 4)

Change requests are an output from which Project Integration Management process?

- A. Direct and Manage Project Execution
- B. Develop Project Management Plan
- C. Close Project
- D. Develop Project Charter

**Answer:** A

**NEW QUESTION 909**

- (Topic 4)

Which Perform Quality Control tool graphically represents how various elements of a system interrelate?

- A. Control chart
- B. Flowchart
- C. Run chart
- D. Pareto chart

**Answer:** B

**NEW QUESTION 911**

- (Topic 4)

What happens to a stakeholder's project influence over time?

- A. Increases
- B. Decreases
- C. Stays the same
- D. Has no bearing

**Answer:** B

**NEW QUESTION 913**

- (Topic 4)

A measure of cost performance that is required to be achieved with the remaining resources in order to meet a specified management goal and is expressed as the ratio of the cost needed for finishing the outstanding work to the remaining budget is known as the:

- A. budget at completion (BAC)
- B. earned value management (EVM)
- C. to-complete performance index
- D. cost performance index

**Answer:** C

**NEW QUESTION 914**

- (Topic 4)

The Monitoring and Controlling Process Group includes processes that:

- A. Establish the scope, objectives, and course of action of a project,
- B. Define a new project or a new phase of an existing project.
- C. Track, review, and regulate the progress and performance of a project.
- D. Complete the work defined in the project management plan.

**Answer:** C

**NEW QUESTION 916**

- (Topic 4)

Which type of analysis is used to determine the cause and degree of difference between the baseline and actual performance?

- A. Schedule network analysis
- B. Reserve analysis
- C. Alternative analysis
- D. Variance analysis

**Answer:** D

**NEW QUESTION 920**

- (Topic 4)

The cost performance baseline is typically displayed in the form of:

- A. An S-curve.
- B. A normal curve.
- C. A U-curve.
- D. A positive slope line.

**Answer:** A

**NEW QUESTION 921**

- (Topic 4)

How is quality control performed?

- A. By identifying quality standards that are relevant to the project and determining how to satisfy them
- B. By monitoring specific project results in compliance with relevant quality standards and determining corrective actions as needed
- C. By ensuring that the entire project team has been adequately trained in quality assurance processes
- D. By applying Monte Carlo, sampling, Pareto analysis, and benchmarking techniques to ensure conformance to quality standards

**Answer:** B

**NEW QUESTION 925**

- (Topic 4)

An input to the Perform Quantitative Risk Analysis process is the:

- A. quality management plan.
- B. project management plan.
- C. communications management plan.
- D. schedule management plan.

**Answer:** D

**NEW QUESTION 928**

- (Topic 4)

Perform Quality Control is accomplished by:

- A. Identifying quality standards that are relevant to the project and determining how to satisfy them.
- B. Monitoring and recording the results of executing the quality activities to assess performance and recommend necessary changes.
- C. Ensuring that the entire project team has been adequately trained in quality assurance processes.
- D. Applying Monte Carlo, sampling, Pareto analysis, and benchmarking techniques to ensure conformance to quality standards.

**Answer:** B

**NEW QUESTION 932**

- (Topic 4)

Which tool or technique is used in validating the scope of a project?

- A. Facilitated workshops
- B. Interviews
- C. Inspection
- D. Meetings

**Answer:** C

**NEW QUESTION 934**

- (Topic 4)

Which knowledge area employs the processes required to ensure timely and appropriate generation, collection, distribution, storage, retrieval, and ultimate disposition of project information?

- A. Project Risk Management
- B. Project Integration Management
- C. Project Communications Management
- D. Project Quality Management

**Answer:** C

**NEW QUESTION 936**

- (Topic 4)

Which type of control tool identifies whether or not a process has a predictable performance?

- A. Cause and effect diagram
- B. Control Charts
- C. Pareto Chart
- D. Histogram

**Answer:** B

**NEW QUESTION 940**

- (Topic 4)

Which of the following tools and techniques is used to estimate cost?

- A. Budget forecast
- B. Variance analysis



- C. Activity cost estimate
- D. Three-point estimate

**Answer:** D

**NEW QUESTION 941**

- (Topic 4)

An input to the Plan Procurement Management process is:

- A. Source selection criteria.
- B. Market research.
- C. A stakeholder register.
- D. A records management system.

**Answer:** C

**NEW QUESTION 943**

- (Topic 4)

The following chart contains information about the tasks in a project.

Task	PV	AC	EV
1	10,000	10,000	10,000
2	10,000	8,000	10,000
3	10,000	8,000	8,000
4	9,000	12,000	10,000
5	10,000	12,000	12,000
6	10,000	10,000	12,000
7	12,000	12,000	10,000
8	10,000	8,000	9,000
9	12,000	10,000	11,000

Based on the chart, what is the cost performance index (CPI) for Task 2?

- A. 0.8
- B. 1
- C. 1.25
- D. 1.8

**Answer:** C

**NEW QUESTION 946**

- (Topic 4)

A project team member agrees to change a project deliverable after a conversation with an external stakeholder. It is later discovered that the change has had an adverse effect on another deliverable. This could have been avoided if the project team had implemented:

- A. Quality assurance.
- B. A stakeholder management plan.
- C. Project team building.
- D. Integrated change control.



**Answer:** D

**NEW QUESTION 951**

- (Topic 4)

Which of the following outputs from the Control Schedule process aids in the communication of schedule variance (SV), schedule performance index (SPI), or any performance status to stakeholders?

- A. Performance organizations
- B. Schedule baselines
- C. Work performance measurements
- D. Change requests

**Answer:** C

**NEW QUESTION 955**

- (Topic 4)

Which term describes an assessment of correctness?

- A. Accuracy
- B. Precision
- C. Grade
- D. Quality

**Answer:** A

**NEW QUESTION 957**

- (Topic 4)

A tool and technique used during the Perform Qualitative Risk Analysis process is:

- A. risk data quality assessment.
- B. variance and trend analysis.
- C. data gathering and representation techniques.
- D. risk audits.

**Answer:** A

**NEW QUESTION 958**

- (Topic 4)

Cost of quality (COQ) refers to total cost of/to:

- A. All efforts related to quality.
- B. Product inspection activities.
- C. Maintain plan quality.
- D. Perform quality control.

**Answer:** B

**NEW QUESTION 962**

- (Topic 4)

Which is a tool used in monitoring and controlling project work?

- A. Work performance information
- B. Project management information system (PMIS)
- C. Activity duration estimates
- D. Scheduled network analysis

**Answer:** B

**NEW QUESTION 963**

- (Topic 4)

Specification of both the deliverables and the processes is the focus of:

- A. Change control
- B. Configuration control
- C. Project monitoring and control
- D. Issue control

**Answer:** A

**NEW QUESTION 967**

- (Topic 4)

A logical relationship in which a successor activity cannot start until a predecessor activity has finished is known as:

- A. Start-to-start (SS).
- B. Start-to-finish (SF).

- C. Finish-to-start (FS).
- D. Finish-to-finish (FF).

**Answer:** C

**NEW QUESTION 968**

- (Topic 5)

Which of the following tools and techniques are utilized in the Close Project or Phase process?

- A. Project management information system
- B. Product analysis
- C. Expert judgment
- D. Inspection

**Answer:** C

**NEW QUESTION 971**

- (Topic 5)

An input to Close Project or Phase is:

- A. Accepted deliverables,
- B. Final products or services,
- C. Document updates,
- D. Work performance information.

**Answer:** A

**NEW QUESTION 972**

- (Topic 5)

At the completion of a project, a report is prepared that details the outcome of the research conducted on a global trend during the project. Which item did this project create?

- A. Result
- B. Product
- C. Service
- D. Improvement

**Answer:** A

**NEW QUESTION 974**

- (Topic 5)

Which conflict resolution technique searches for solutions that bring some degree of satisfaction to all parties in order to temporarily or partially resolve the conflict?

- A. Force/direct
- B. Withdraw/avoid
- C. Compromise/reconcile
- D. Collaborate/problem solve

**Answer:** C

**NEW QUESTION 977**

- (Topic 5)

Which of the following is a statistical concept that calculates the average outcome when the future includes scenarios that may or may not happen?

- A. Sensitivity analysis
- B. Three-point estimate
- C. Modeling and simulation
- D. Expected monetary value analysis

**Answer:** D

**NEW QUESTION 979**

- (Topic 5)

When is a project finished?

- A. After verbal acceptance of the customer or sponsor
- B. After lessons learned have been documented in contract closure
- C. When the project objectives have been met
- D. After resources have been released

**Answer:** C

**NEW QUESTION 980**

- (Topic 5)

The process of formalizing acceptance of the completed project deliverables is known as:

- A. Validate Scope.
- B. Close Project or Phase.
- C. Control Quality.
- D. Verify Scope.

**Answer:** A

**NEW QUESTION 982**

- (Topic 5)

Those who enter into a contractual agreement to provide services necessary for a project are:

- A. buyers
- B. sellers
- C. business partners
- D. product users

**Answer:** B

**NEW QUESTION 987**

- (Topic 5)

Lessons learned are created and project resources are released in which Process Group?

- A. Planning
- B. Executing
- C. Closing
- D. Initiating

**Answer:** C

**NEW QUESTION 989**

- (Topic 5)

A project has a current cost performance index (CPI) of 1.25. To date, US\$10,000 have been spent on performing the project work. What is the earned value of the work completed to date?

- A. US\$S000
- B. US\$9500
- C. US\$10,000
- D. US\$12,500

**Answer:** D

**NEW QUESTION 993**

- (Topic 5)

Updates to organizational process assets such as procurement files, deliverable acceptances, and lessons learned documentation are typical outputs of which process?

- A. Close Project or Phase
- B. Conduct Procurements
- C. Control Procurements
- D. Close Procurements

**Answer:** D

**NEW QUESTION 996**

- (Topic 5)

When alternative dispute resolution (ADR) is necessary, which tool or technique should be utilized?

- A. Interactive communication
- B. Claims administration
- C. Conflict management
- D. Performance reporting

**Answer:** B

**NEW QUESTION 997**

- (Topic 5)

What do composite organizations involve?

- A. Functional and project managers
- B. Functional managers only
- C. Project managers only
- D. Technical managers and project managers

**Answer:** A

**NEW QUESTION 998**

- (Topic 5)

The individual or group that provides resources and support for a project and is accountable for success is the:

- A. sponsor
- B. customer
- C. business partners
- D. functional managers

**Answer:** A

**NEW QUESTION 1001**

- (Topic 5)

An example of a group decision-making technique is:

- A. nominal group technique
- B. majority
- C. affinity diagram
- D. multi-criteria decision analysis

**Answer:** A

**NEW QUESTION 1006**

- (Topic 5)

Which Knowledge Areas include processes from the Closing Process Group?

- A. Project Quality Management and Project Time Management
- B. Project Scope Management and Project Risk Management
- C. Project Stakeholder Management and Project Cost Management
- D. Project Integration Management and Project Procurement Management

**Answer:** D

**NEW QUESTION 1008**

- (Topic 5)

Which of the following is a conflict resolution technique that emphasizes areas of agreement rather than areas of difference?

- A. Compromising
- B. Collaborating
- C. Smoothing
- D. Problem Solving

**Answer:** C

**NEW QUESTION 1009**

- (Topic 5)

An output of the Close Project (or Close Phase) process is:

- A. accepted deliverables
- B. organizational process asset updates
- C. work performance information
- D. project management plan updates

**Answer:** B

**NEW QUESTION 1010**

- (Topic 5)

In a weak matrix, the project managers role is:

- A. part-time
- B. full-time
- C. occasional
- D. unlimited

**Answer:** A

**NEW QUESTION 1013**

- (Topic 5)

Which degree of authority does a project manager have on a project in a strong matrix organizational structure?

- A. Limited
- B. Low to moderate
- C. Moderate to high
- D. High to almost total

**Answer:** C

**NEW QUESTION 1015**

- (Topic 5)

Which of the following is an output of Close Procurements?

- A. Accepted deliverables
- B. Organizational process assets updates
- C. Managing stakeholder expectations
- D. Performance reports

**Answer:** B

**NEW QUESTION 1020**

- (Topic 5)

The links between the processes in the Process Groups are often:

- A. Intuitive
- B. Iterative
- C. Measured
- D. Monitored

**Answer:** B

**NEW QUESTION 1025**

- (Topic 5)

A project manager builds consensus and overcomes obstacles by employing which communication technique?

- A. Listening
- B. Facilitation
- C. Meeting management
- D. Presentation

**Answer:** B

**NEW QUESTION 1027**

- (Topic 5)

Which of the following is an estimating technique that uses the values of parameters from previous similar projects for estimating the same parameter or measure for a current project?

- A. Reserve analysis
- B. Three-point estimating
- C. Parametric estimating
- D. Analogous estimating

**Answer:** D

**NEW QUESTION 1032**

- (Topic 5)

The person assigned by the performing organization to be responsible for achieving the project objectives is the:

- A. functional manager
- B. program manager
- C. project manager
- D. portfolio manager

**Answer:** C

**NEW QUESTION 1036**

- (Topic 5)

What is the number of stakeholders, if the project has 28 potential communication channels?

- A. 7
- B. 8
- C. 14
- D. 16

**Answer:** B

**NEW QUESTION 1037**

- (Topic 5)

Which technique should a project manager use in a situation in which a collaborative approach to conflict management is not possible?

- A. Coaching
- B. Avoidance
- C. Consensus
- D. Influencing

**Answer:**

B

**NEW QUESTION 1042**

- (Topic 5)

Lessons learned documentation is gathered during which of the following Project Management Process Groups?

- A. Planning
- B. Executing
- C. Closing
- D. Initiating

**Answer: C**

**NEW QUESTION 1044**

- (Topic 5)

The process for performing variance analysis may vary, depending on:

- A. scenario building, technology forecasting, and forecast by analogy.
- B. working relationships among various stakeholders and team members.
- C. application area, the standard used, and the industry,
- D. work to be completed next.

**Answer: C**

**NEW QUESTION 1049**

- (Topic 5)

Which process documents the business needs of a project and the new product, service, or other result that is intended to satisfy those requirements?

- A. Develop Project Management Plan
- B. Develop Project Charter
- C. Direct and Manage Project Execution
- D. Collect Requirements

**Answer: B**

**NEW QUESTION 1053**

- (Topic 5)

Which is the correct formula for calculating expected activity cost for three-point estimating?

- A.  $C_e = (C_0 + 6C_m + C_p)/4$
- B.  $C_e = (6C_0 + C_m + C_p)/4$
- C.  $C_e = (C_0 + 4C_m + C_p)/6$
- D.  $C_e = (C_0 + C_{,,,} + 4C_p) / 6$

**Answer: C**

**NEW QUESTION 1055**

- (Topic 5)

In which Process Group are lessons learned documented?

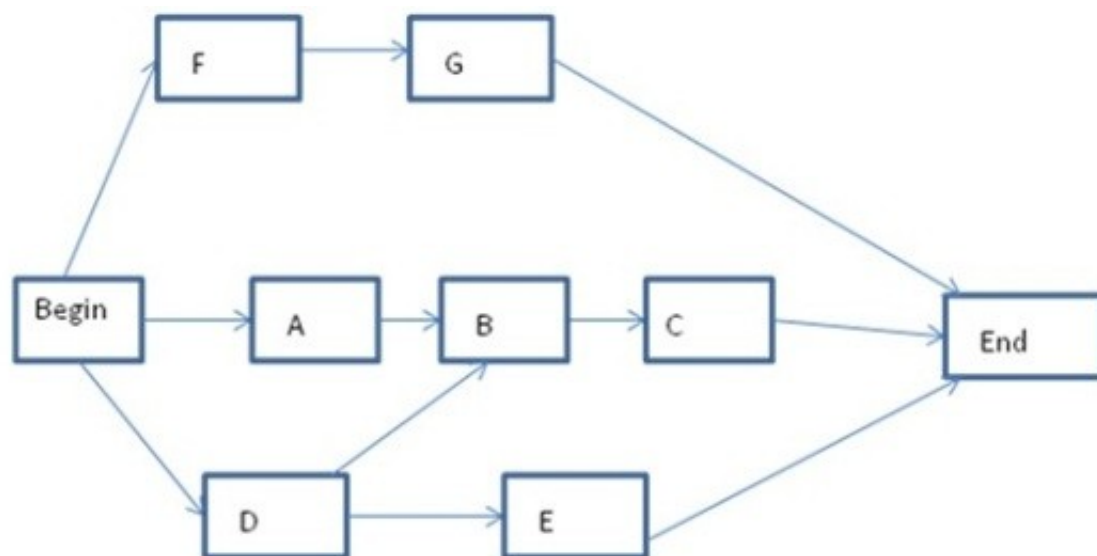
- A. Planning
- B. Closing
- C. Executing
- D. Initiating

**Answer: B**

**NEW QUESTION 1056**

- (Topic 5)

Exhibit A is an example of which of the following types of Sequence Activities?



## Exhibit A

- A. Activity-on-arrow diagramming
- B. Precedence diagramming
- C. Project schedule network diagramming
- D. Mathematical analysis diagramming

**Answer:** B

### NEW QUESTION 1059

- (Topic 5)

The cost benefit analysis tool is used for creating:

- A. Pareto charts.
- B. quality metrics.
- C. change requests,
- D. Ishikawa diagrams.

**Answer:** B

### NEW QUESTION 1061

- (Topic 5)

What type of reward can hurt team cohesiveness?

- A. Sole-sum
- B. Win-lose
- C. Lose-win
- D. Partial-sum

**Answer:** B

### NEW QUESTION 1064

- (Topic 5)

Which of the following is a complete set of indexed contract documentation, including the closed contract?

- A. Procurement package
- B. Negotiated settlements
- C. Procurement file
- D. Procurement management plan

**Answer:** C

### NEW QUESTION 1068

- (Topic 5)

The process of identifying and documenting relationships among the project activities is known as:

- A. Control Schedule.
- B. Sequence Activities.
- C. Define Activities.
- D. Develop Schedule.

**Answer:** B

### NEW QUESTION 1072

- (Topic 5)

Which activity may occur at project or phase closure?

- A. Acceptance of deliverables
- B. Change requests
- C. Project management plan updates



D. Benchmarking

**Answer:** A

**NEW QUESTION 1077**

.....

## Thank You for Trying Our Product

\* 100% Pass or Money Back

All our products come with a 90-day Money Back Guarantee.

\* One year free update

You can enjoy free update one year. 24x7 online support.

\* Trusted by Millions

We currently serve more than 30,000,000 customers.

\* Shop Securely

All transactions are protected by VeriSign!

**100% Pass Your PMP Exam with Our Prep Materials Via below:**

<https://www.certleader.com/PMP-dumps.html>