

# Cisco

## Exam Questions 350-901

Developing Applications using Cisco Core Platforms & APIs



#### NEW QUESTION 1

A developer has created an application based on customer requirements. The customer needs to run the application with the minimum downtime. Which design approach regarding high-availability applications, Recovery Time Objective, and Recovery Point Objective must be taken?

- A. Active/passive results in lower RTO and RP
- B. For RPO, data synchronization between the two data centers must be timely to allow seamless request flow.
- C. Active/passive results in lower RTO and RP
- D. For RPO, data synchronization between the two data centers does not need to be timely to allow seamless request flow.
- E. Active/active results in lower RTO and RP
- F. For RPO, data synchronization between the two data centers does not need to be timely to allow seamless request flow.
- G. Active/active results in lower RTO and RP
- H. For RPO, data synchronization between the two data centers must be timely to allow seamless request flow.

**Answer:** A

#### NEW QUESTION 2

Which two statements are considered best practices according to the 12-factor app methodology for application design? (Choose two.)

- A. Application code writes its event stream to stdout.
- B. Application log streams are archived in multiple replicated databases.
- C. Application log streams are sent to log indexing and analysis systems.
- D. Application code writes its event stream to specific log files.
- E. Log files are aggregated into a single file on individual nodes.

**Answer:** AD

#### NEW QUESTION 3

An organization manages a large cloud-deployed application that employs a microservices architecture. No notable issues occur with downtime because the services of this application are redundantly deployed over three or more data center regions. However, several times a week reports are received about application slowness. The container orchestration logs show faults in a variety of containers that cause them to fail and then spin up brand new. Which action must be taken to improve the resiliency design of the application while maintaining current scale?

- A. Update the base image of the containers.
- B. Test the execution of the application with another cloud services platform.
- C. Increase the number of containers running per service.
- D. Add consistent “try/catch(exception)” clauses to the code.

**Answer:** D

#### NEW QUESTION 4

How should a web application be designed to work on a platform where up to 1000 requests per second can be served?

- A. Use algorithms like random early detection to deny excessive requests.
- B. Set a per-user limit (for example, 5 requests/minute/user) and deny the requests from the users who have reached the limit.
- C. Only 1000 user connections are allowed; further connections are denied so that all connected users can be served.
- D. All requests are saved and processed one by one so that all users can be served eventually.

**Answer:** D

#### NEW QUESTION 5

Which two situations are flagged by software tools designed for dependency checking in continuous integration environments, such as OWASP? (Choose two.)

- A. publicly disclosed vulnerabilities related to the included dependencies
- B. mismatches in coding styles and conventions in the included dependencies
- C. incompatible licenses in the included dependencies
- D. test case failures introduced by bugs in the included dependencies
- E. buffer overflows to occur as the result of a combination of the included dependencies

**Answer:** AE

#### NEW QUESTION 6

A network operations team is using the cloud to automate some of their managed customer and branch locations. They require that all of their tooling be ephemeral by design and that the entire automation environment can be recreated without manual commands. Automation code and configuration state will be stored in git for change control and versioning. The engineering high-level plan is to use VMs in a cloud-provider environment then configure open source tooling onto these VMs to poll, test, and configure the remote devices, as well as deploy the tooling itself. Which configuration management and/or automation tooling is needed for this solution?

- A. Ansible
- B. Ansible and Terraform
- C. NSO
- D. Terraform
- E. Ansible and NSO

**Answer:** B

NEW QUESTION 7

Which statement about microservices architecture is true?

- A. Applications are written in a single unit.
- B. It is a complex application composed of multiple independent parts.
- C. It is often a challenge to scale individual parts.
- D. A single faulty service can bring the whole application down.

Answer: B

NEW QUESTION 8

DRAG DROP

Drag and drop the characteristics from the left onto the correct data processing techniques on the right, in the context of GDPR.  
Select and Place:

Answer Area

processing of personal data in such a manner that the personal data can no longer be attributed to a specific data subject without the use of additional information

data stripped of sufficient elements such that the data subject can no longer be identified

can be re-identified

cannot be re-identified

Data anonymization

Data pseudonymization

- A. Mastered
- B. Not Mastered

Answer: A

Explanation:

Answer Area

processing of personal data in such a manner that the personal data can no longer be attributed to a specific data subject without the use of additional information

data stripped of sufficient elements such that the data subject can no longer be identified

can be re-identified

cannot be re-identified

Data anonymization

can be re-identified

data stripped of sufficient elements such that the data subject can no longer be identified

Data pseudonymization

cannot be re-identified

processing of personal data in such a manner that the personal data can no longer be attributed to a specific data subject without the use of additional information

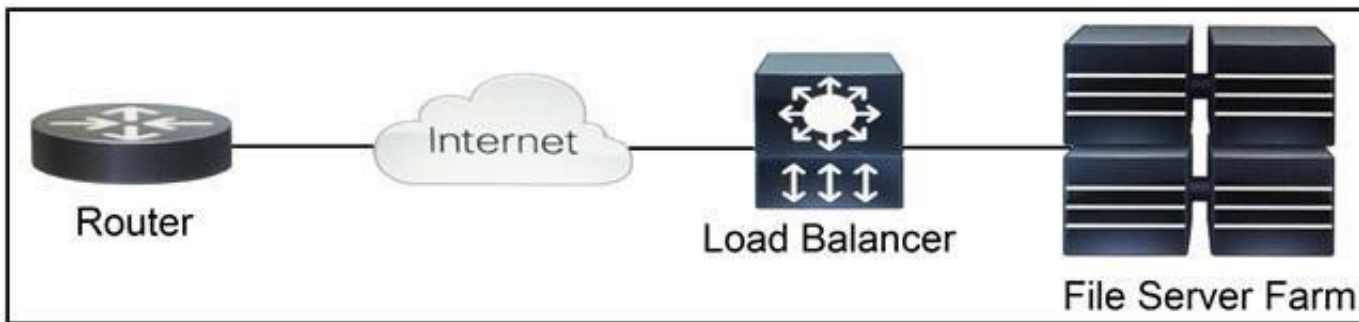
NEW QUESTION 9

Which two data encoding techniques are supported by gRPC? (Choose two.)

- A. XML
- B. JSON
- C. ASCII
- D. ProtoBuf
- E. YAML

Answer: BE

NEW QUESTION 10



Refer to the exhibit. Which two functions are performed by the load balancer when it handles traffic originating from the Internet destined to an application hosted on the file server farm? (Choose two.)

- A. Terminate the TLS over the UDP connection from the router and originate an HTTPS connection to the selected server.
- B. Terminate the TLS over the UDP connection from the router and originate an HTTP connection to the selected server.
- C. Terminate the TLS over the TCP connection from the router and originate an HTTP connection to the selected server.
- D. Terminate the TLS over the TCP connection from the router and originate an HTTPS connection to the selected server.
- E. Terminate the TLS over the SCTP connection from the router and originate an HTTPS connection to the selected server.

**Answer:** DE

#### NEW QUESTION 10

Which transport protocol is used by gNMI?

- A. HTTP/2
- B. HTTP 1.1
- C. SSH
- D. MQTT

**Answer:** A

#### NEW QUESTION 14

A user is receiving a 429 Too Many Requests error. Which scheme is the server employing that causes this error?

- A. rate limiting
- B. time outs
- C. caching
- D. redirection

**Answer:** A

#### NEW QUESTION 17

An Etag header is included in the HTTP response for an API resource. What are two benefits of using the value of the Etag for future interactions involving the same API resource? (Choose two.)

- A. caching and optimization of response payloads
- B. creating conditional requests
- C. categorizing and comparing this API resource with others
- D. checking the integrity of the resource
- E. requesting the list of operations authorized for this resource

**Answer:** AB

#### NEW QUESTION 19

A container running a Python script is failing when it reaches the integration testing phase of the CI/CD process. The code has been reviewed thoroughly and the build process works on this container and all other containers pass unit and integration testing.

What should be verified to resolve the issue?

- A. that the correct port is exposed in the Dockerfile
- B. that the necessary modules and packages are installed on build
- C. that the script is running from the right directory
- D. that the Python version of the container image is correct

**Answer:** B

#### NEW QUESTION 24

There is a requirement to securely store unique usernames and passwords. Given a valid username, it is also required to validate that the password provided is correct. Which action accomplishes this task?

- A. Encrypt the username, hash the password, and store these values.
- B. Hash the username, hash the password, and store these values.
- C. Encrypt the username, encrypt the password, and store these values.
- D. Hash the username, encrypt the password, and store these values.

**Answer:** A

#### NEW QUESTION 27

While developing an application following the 12-factor app methodology, which approach should be used in the application for logging?

- A. Write a log to a file in the application directory.
- B. Write a log to a file in /var/log.
- C. Write the logs buffered to stdout.
- D. Write the logs unbuffered to stdout.

**Answer: D**

#### NEW QUESTION 29

```
FROM alpine:3.7
RUN apk add --no-cache bash
```

Refer to the exhibit. Which additional line results in the output of Test 1 upon execution of the docker run --rm devnet 1 command in a Dockerfile with this content?

- A. CMD ["/bin/echo", "Test"]
- B. RUN ["/bin/echo", "Test"]
- C. ENTRYPOINT ["/bin/echo", "Test"]
- D. CMD ["/bin/echo Test"]

**Answer: A**

#### NEW QUESTION 32

```
apiVersion: v1
clusters:
- cluster:
  certificate-authority: fake-ca-file
  server: https://1.2.3.4
  name: development
- cluster:
  insecure-skip-tls-verify: true
  server: https://5.6.7.8
  name: scratch
contexts:
- context:
  cluster: development
  namespace: frontend
  user: developer
  name: dev-frontend
- context:
  cluster: development
  namespace: storage
  user: developer
  name: dev-storage
- context:
  cluster: scratch
  namespace: default
  user: experimenter
  name: exp-scratch
current context: ""
kind: Config
preferences: {}
users:
- name: developer
  user:
    client-certificate: fake-cert-file
    client-key: fake-key-file
- name: experimenter
  user:
    password: some-password
    username: exp
```

Refer to the exhibit. A kubeconfig file to manage access to clusters is provided. How many clusters are defined and which of them are accessed using username/password authentication versus certificate?

- A. two clusters; scratch
- B. three clusters; scratch
- C. three clusters; development
- D. two clusters; development

**Answer: C**



#### NEW QUESTION 36

```
- name: Configure Interfaces
  with_items: "{{interfaces}}"
  netconf_config:
    <<: *host_info
    xml: |
      <config>
        <interfaces xmlns="urn:ietf:params:xml:ns:yang:ietf-interfaces">
          <interface>
            <name>{{item.interface_type}}{{item.interface_id}}</name>
            <description>{{item.description}}</description>
            <type xmlns:ianaift="urn:ietf:params:xml:ns:yang:iana-if-type">ianaift:ethernetCsmacd</type>
            <enabled>true</enabled>
            <ipv4 xmlns="urn:ietf:params:xml:ns:yang:ietf-ip">
              <address>
                <ip>{{item.ip_address}}</ip>
                <netmask>{{item.subnet_mask}}</netmask>
              </address>
            </ipv4>
          </interface>
        </interfaces>
      </config>
```

Refer to the exhibit. As part of the Ansible playbook workflow, several new interfaces are being configured using the netconf\_config module. The task references the interface variables that are unique per device. In which directory is the YAML file with these variables found?

- A. host\_vars directory
- B. home directory
- C. group\_vars directory
- D. current working directory

**Answer: A**

#### NEW QUESTION 39

Application sometimes store configuration as constants in the code, which is a violation of strict separation of configuration from code. Where should application configuration be stored?

- A. environment variables
- B. YAML files
- C. Python libraries
- D. Dockerfiles
- E. INI files

**Answer: B**

#### NEW QUESTION 41

.....

## Thank You for Trying Our Product

### We offer two products:

1st - We have Practice Tests Software with Actual Exam Questions

2nd - Questions and Answers in PDF Format

### 350-901 Practice Exam Features:

- \* 350-901 Questions and Answers Updated Frequently
- \* 350-901 Practice Questions Verified by Expert Senior Certified Staff
- \* 350-901 Most Realistic Questions that Guarantee you a Pass on Your First Try
- \* 350-901 Practice Test Questions in Multiple Choice Formats and Updates for 1 Year

**100% Actual & Verified — Instant Download, Please Click**  
**[Order The 350-901 Practice Test Here](#)**