

# Cisco

## Exam Questions 010-151

Cisco Certified Technician (CCT) for Data Center



#### NEW QUESTION 1

The Ethernet specification details several different fiber optic media types. What is the wire transmission speed for 100BASE-FX Ethernet?

- A. 10 Mb/s
- B. 100 Mb/s
- C. 1000 Mb/s
- D. 10000 Mb/s

**Answer:** B

#### NEW QUESTION 2

Which two statements about the Ethernet media are true? (Choose two.)

- A. A twisted-pair cable system has each pair of wires twisted together to reduce electromagnetic interferenc
- B. Compared to multimode fiber, the single-mode fiber is designed for shorter distances with higher cos
- C. 40 Gigabit Ethernet twinax cables deploy Enhanced Quad Small Form Factor Pluggable (QSFP+) connector
- D. The twinax cables can be found in either a shielded twisted-pair or an unshielded twisted-pair variatio

**Answer:** AC

#### NEW QUESTION 3

Where do you find the model number of a Cisco MDS 9200 Series chassis?

- A. on the top front of the chassis next to the serial number
- B. on the bottom front of the chassis next to the Cisco logo
- C. on the top front of the chassis next to the Cisco logo
- D. on the bottom front of the chassis next to the serial number

**Answer:** C

#### NEW QUESTION 4

How do you find the serial number of a Cisco UCS 5108 Blade Server chassis?

- A. Use the Cisco UCS Admi
- B. Use the Cisco UCS Applicatio
- C. Use the Cisco UCS Assistan
- D. Use the Cisco UCS Manage

**Answer:** D

#### NEW QUESTION 5

What does the system status LED look like when an over temperature or major alarm occurs on the Cisco UCS 6120XP Fabric Interconnect?

- A. Amber
- B. Red
- C. Blinking amber
- D. Blinking red

**Answer:** C

#### NEW QUESTION 6

Which processor option is supported in the Cisco UCS C420 M3 Server?

- A. up to two Intel Xeon E5-4600 series multicore processors
- B. up to two Intel Xeon E7-4800 series multicore processors
- C. up to four Intel Xeon E5-4600 series multicore processors
- D. two or four Intel Xeon E7-8800 series multicore processors

**Answer:** C

#### NEW QUESTION 7

Which Cisco MDS model supports the most Fibre Channel ports per chassis?

- A. MDS 9513
- B. MDS 9509
- C. MDS 9506
- D. MDS 9250i

**Answer:** A

#### NEW QUESTION 8

Refer to the exhibit.



Which Cisco MDS chassis supports the 48-Port 16-Gbps Fibre Channel Switching Module?

- A. MDS 9509
- B. MDS 9513
- C. MDS 9710
- D. MDS 9506

**Answer: C**

#### NEW QUESTION 9

Which supervisor module is supported by a Cisco Nexus 7700 Series Switch?

- A. first-generation supervisor module
- B. second-generation supervisor module (Sup2)
- C. second-generation supervisor enhanced module (Sup2E)
- D. third-generation supervisor enhanced module (Sup3E)

**Answer: C**

#### NEW QUESTION 10

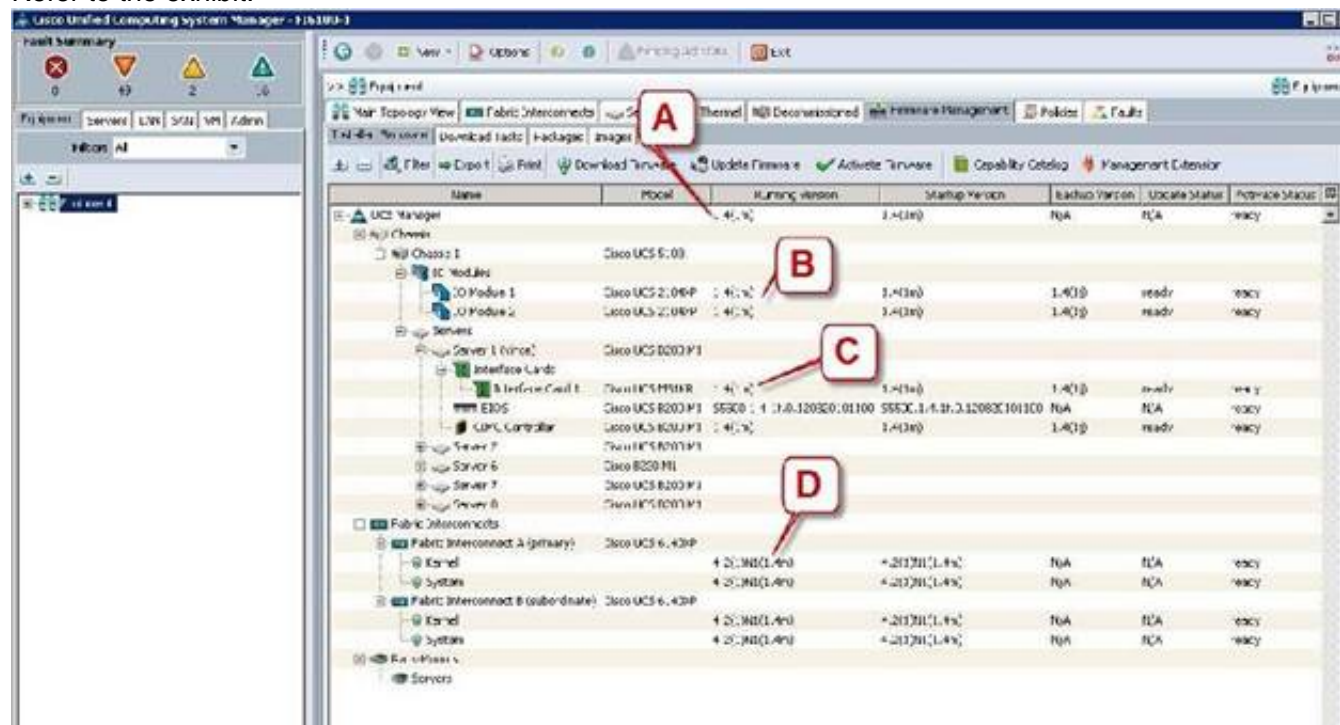
Which type of optics module is supported by a 12-port 100 GE Cisco Nexus 7700 F3 Series I/O module?

- A. CPAK
- B. QSFP+
- C. SFP/SFP+
- D. CFP

**Answer: A**

#### NEW QUESTION 10

Refer to the exhibit.



Which call-out accurately shows the current running version of the Cisco UCS Manager management software?

- A. A - UCS Manager running version 1.4(1m)
- B. B - IO Module 1 running version 1.4(1m)
- C. C - Interface Card 1 running version 1.4(1m)
- D. D - Kernel running version 4.2(1)N(1.4m)

**Answer: A**

#### NEW QUESTION 11

Which command can be used to exit to EXEC mode from this current mode?

switch(config-if) #

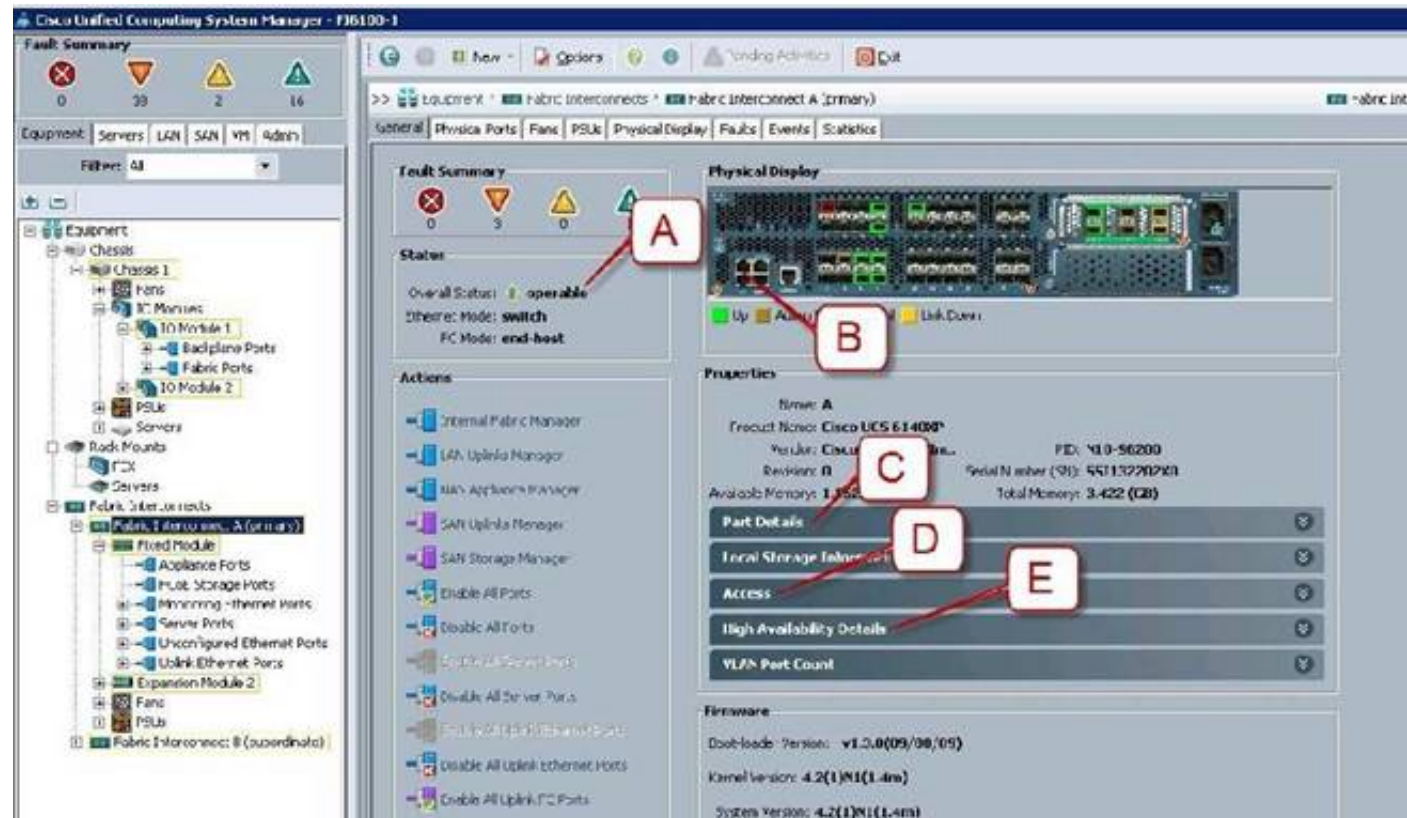
- A. Ctrl-C
- B. Ctrl-L
- C. quit

- D. exit
- E. end

**Answer: E**

### NEW QUESTION 15

Refer to the exhibit.



Where is the best place to see whether the system is ready for a Fabric Interconnect failover?

- A. A - Overall Status operable
- B. B - L1 Connection
- C. C - Part Details
- D. D - Access
- E. E - High Availability Details

**Answer: E**

### NEW QUESTION 19

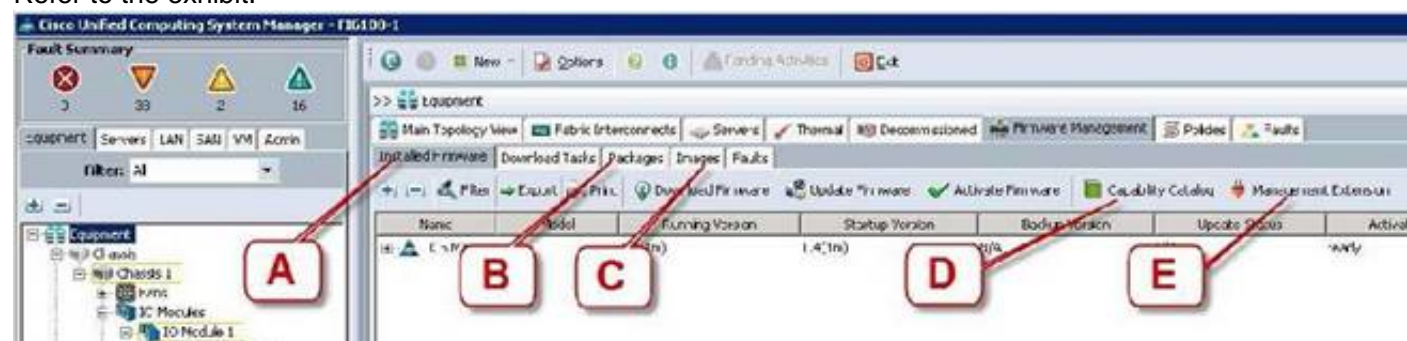
Which command saves the active configuration to NVRAM?

- A. copy startup-config running-config
- B. copy active-config backup-config
- C. copy running-config startup-config
- D. copy backup-config active-config

**Answer: C**

### NEW QUESTION 22

Refer to the exhibit.



Where is the best place to find the B200 BIOS version used in a specific Cisco UCS Manager version?

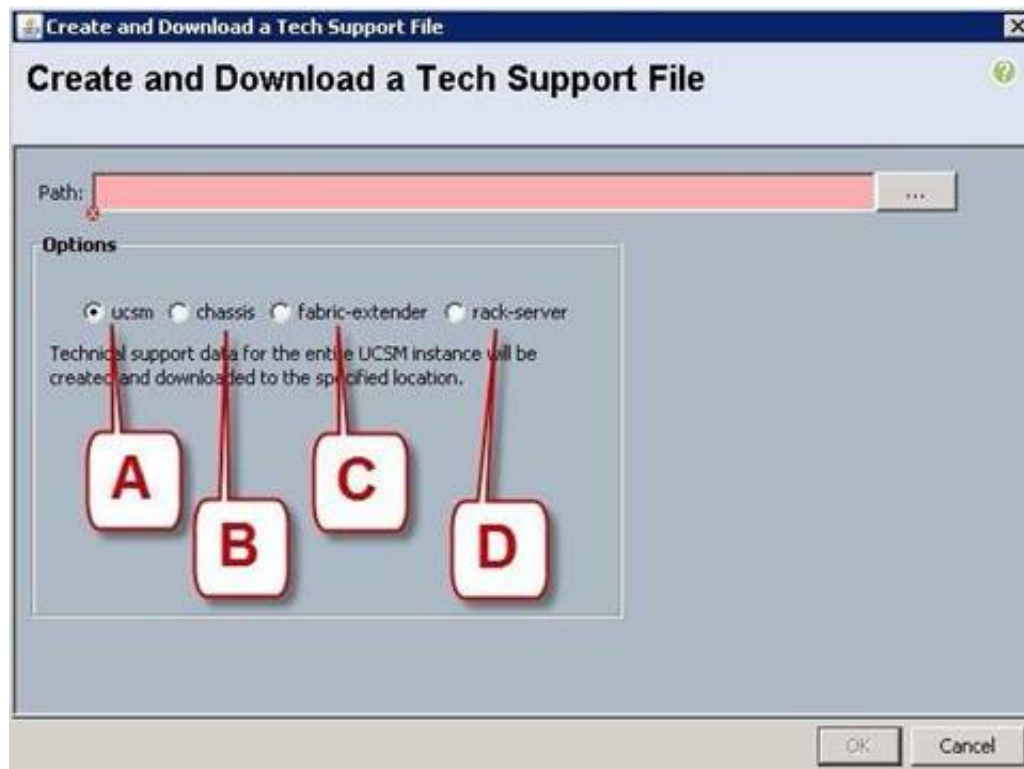
- A. A - Installed Firmware
- B. B - Packages
- C. C - Images
- D. D - Capability Catalog
- E. E - Management Extension

**Answer: B**

### NEW QUESTION 26

Refer to the exhibit.





Which option should you select to get the output of the show tech-support detail command for the Cisco UCS B-Series blade?

- A. A - ucsm
- B. B - chassis
- C. C - fabric-extender
- D. D - rack-server

**Answer:** B

#### NEW QUESTION 30

Which Cisco NX-OS command displays kernel uptime?

- A. show module
- B. show version
- C. show license
- D. show boot
- E. show interface

**Answer:** B

#### NEW QUESTION 35

Which two commands display the version of Cisco NX-OS code that the device is currently running on? (Choose two.)

- A. show version
- B. show module
- C. show interface
- D. show boot
- E. show license

**Answer:** AB

#### NEW QUESTION 40

On the Sensors page from the CIMC view, which four tabs are displayed to view further information? (Choose four.)

- A. Power Supply
- B. Fan
- C. Memory
- D. CPU
- E. LEDs
- F. Temperature

**Answer:** ABEF

#### NEW QUESTION 43

Which tool does a network administrator not need when installing hardware?

- A. cable tester
- B. wrench set
- C. cable wraps
- D. needle-nose pliers
- E. PCMCIA memory
- F. soldering iron with grounded tip

**Answer:** F

#### NEW QUESTION 44

When the Cisco UCS Manager is used to verify the B- or C-Series device, which two types of Overall Status are acceptable and do not indicate a failure? (Choose two.)

- A. Online
- B. OK
- C. Unassociated
- D. Active

**Answer:** BC

#### NEW QUESTION 47

What is the correct path to verify the Overall Status of Chassis 1 | Server 3?

- A. Equipment Tab > Chassis > Chassis 1 > Servers > Server 3 Status tab
- B. Equipment Tab > Chassis > Chassis 1 > Servers > Server 3 General tab
- C. Equipment Tab > Chassis > Chassis 1 > Servers > Server 3 FSM tab
- D. Servers Tab > Chassis > Server 3 General tab
- E. Status Tab > Chassis > Chassis 1 > Servers > Server 3
- F. Admin Tab > Chassis > Chassis 1 > Servers > Server 3 General tab

**Answer:** B

#### NEW QUESTION 48

If the Overall Status for a Cisco UCS B-Series Blade Server indicates a failure in the Cisco UCS Manager, such as discovery-failed, which statement is true?

- A. The server shuts down
- B. The server automatically reboots reboot in 3 minute
- C. The endpoints on that server cannot be upgrade
- D. The server is online, but the administrator cannot assign a service profile to that blad

**Answer:** C

#### NEW QUESTION 50

Which three statements about powering down a Cisco UCS C-Series Rack-Mount Server to perform maintenance or replacement are true? (Choose three.)

- A. Standby power mode: Power is supplied only to the service processor and the cooling fans, and it is safe to power off the server from this mod
- B. Power status LE
- C. Green indicates that the server is in main power mode and can be safely powered of
- D. Graceful shutdown: Press and release the power butto
- E. The operating system performs a graceful shutdown, and the server goes to standby mode, which is indicated by an amber power status LE
- F. Disconnect the power cords from the power supplies in your server to completely power off the serve
- G. Only an emergency shutdown can be performed using the power button on the server front pane
- H. The Cisco UCS C-Series Rack-Mount Server has only one power mod

**Answer:** ACD

#### NEW QUESTION 54

Which five things should the administrator verify after performing maintenance or replacing a blade server? (Choose five.)

- A. blade server status
- B. hard drive status
- C. host OS boot status
- D. CPU status
- E. mezzanine card status
- F. memory DIMM status
- G. fan and power status

**Answer:** ABDEF

#### NEW QUESTION 57

After installation or replacement of a Cisco UCS C-Series Rack-Mount Server, the host does not boot. Which four options should be verified? (Choose four.)

- A. Verify the power source to the equipmen
- B. Check for loose HDD cable
- C. Reseat the DIMMs, CPU, and PCI card
- D. Verify that power supplies are receiving powe
- E. Reseat the mezzanine card connecto
- F. Check the CPU sockets for bent pin
- G. Check the Cisco IMC for fan fault

**Answer:** ACDF

#### NEW QUESTION 59

What is the maximum distance that the 40GBASE-LR4 Ethernet standard can span?

- A. 550 m
- B. 10 km
- C. 40 km
- D. 80 km

**Answer:** B

**NEW QUESTION 60**

How many 10GBASE-T port licenses are preinstalled on a Cisco Nexus 3064-32T?

- A. 16
- B. 32
- C. 48
- D. 64

**Answer:** B

**NEW QUESTION 64**

Which device provides analysis of Fibre Channel traffic without any network disruption?

- A. Cisco MDS 9000 Data Analyzer Adapter
- B. Cisco MDS 9000 Port Analyzer Adapter
- C. Cisco MDS 9000 Channel Analyzer Device
- D. Cisco MDS 9000 Channel Analyzer Adapter

**Answer:** B

**NEW QUESTION 67**

Which three steps do you perform to troubleshoot when a rack server powers on with no video? (Choose three.)

- A. Check that the front I/O dongle is properly seate
- B. Check the front I/O cable connection to the motherboar
- C. Check for memory subsystem failur
- D. Verify the power source to equipmen
- E. Reseat the DIMMs, CPU, and PCI card

**Answer:** ABC

**NEW QUESTION 72**

.....

## Thank You for Trying Our Product

### We offer two products:

1st - We have Practice Tests Software with Actual Exam Questions

2nd - Questions and Answers in PDF Format

### 010-151 Practice Exam Features:

- \* 010-151 Questions and Answers Updated Frequently
- \* 010-151 Practice Questions Verified by Expert Senior Certified Staff
- \* 010-151 Most Realistic Questions that Guarantee you a Pass on Your First Try
- \* 010-151 Practice Test Questions in Multiple Choice Formats and Updates for 1 Year

**100% Actual & Verified — Instant Download, Please Click**  
**[Order The 010-151 Practice Test Here](#)**