

PMI-100 Dumps

CAPM (Certified Associate in Project Management) Exam

<https://www.certleader.com/PMI-100-dumps.html>



NEW QUESTION 1

- (Topic 1)

The basis of identification for current or potential problems to support later claims or new procurements is provided by:

- A. A risk urgency assessment.
- B. The scope baseline.
- C. Work performance information.
- D. Procurement audits.

Answer: C

NEW QUESTION 2

- (Topic 1)

The Perform Integrated Change Control process occurs in which Process Group?

- A. Initiating
- B. Executing
- C. Monitoring and Controlling
- D. Planning

Answer: C

NEW QUESTION 3

- (Topic 1)

Which input to the Plan Risk Management process provides information on high-level risks?

- A. Project charter
- B. Enterprise environmental factors
- C. Stakeholder register
- D. Organizational process assets

Answer: A

NEW QUESTION 4

- (Topic 1)

Which quality management and control tool is useful in visualizing parent-to-child relationships in any decomposition hierarchy that uses a systematic set of rules that define a nesting relationship?

- A. Interrelationship digraphs
- B. Tree diagram
- C. Affinity diagram
- D. Network diagram

Answer: B

NEW QUESTION 5

- (Topic 1)

When a backward pass is calculated from a schedule constraint that is later than the early finish date that has been calculated during a forward pass calculation, this causes which type of total float?

- A. Negative
- B. Zero
- C. Positive
- D. Free

Answer: C

NEW QUESTION 6

- (Topic 1)

Units of measure, level of precision, level of accuracy, control thresholds, and rules of performance measurement are examples of items that are established in the:

- A. Cost management plan.
- B. Work performance information.
- C. Quality management plan.
- D. Work breakdown structure.

Answer: A

NEW QUESTION 7

- (Topic 1)

The review of a sellers progress toward achieving the goals of scope and quality within cost and schedule compared to the contract is known as:

- A. Work performance information.
- B. Inspections and audits.

- C. Payment systems.
- D. Procurement performance reviews.

Answer: D

NEW QUESTION 8

- (Topic 1)

An input to the Plan Cost Management process is:

- A. Cost estimates.
- B. Resource calendars,
- C. The project charter,
- D. The risk register.

Answer: C

NEW QUESTION 9

- (Topic 1)

The business needs, assumptions, and constraints and the understanding of the customers needs and high-level requirements are documented in the:

- A. Project management plan.
- B. Project charter.
- C. Work breakdown structure.
- D. Stakeholder register.

Answer: B

NEW QUESTION 10

- (Topic 1)

Payback period, return on investment, internal rate of return, discounted cash flow, and net present value are all examples of:

- A. Expert judgment.
- B. Analytical techniques.
- C. Earned value management.
- D. Group decision-making techniques.

Answer: B

NEW QUESTION 10

- (Topic 1)

Which tool or technique is used in the Plan Scope Management process?

- A. Document analysis
- B. Observations
- C. Product analysis
- D. Expert judgment

Answer: D

NEW QUESTION 11

- (Topic 1)

The iterative and interactive nature of the Process Groups creates the need for the processes in which Knowledge Area?

- A. Project Communications Management
- B. Project Integration Management
- C. Project Risk Management
- D. Project Scope Management

Answer: B

NEW QUESTION 15

- (Topic 1)

Risk categorization is a tool or technique used in which process?

- A. Plan Risk Responses
- B. Plan Risk Management
- C. Perform Qualitative Risk Analysis
- D. Perform Quantitative Risk Analysis

Answer: C

NEW QUESTION 16

- (Topic 1)

The definition of when and how often the risk management processes will be performed throughout the project life cycle is included in which risk management plan component?

- A. Timing
- B. Methodology
- C. Risk categories
- D. Budgeting

Answer: A

NEW QUESTION 19

- (Topic 1)

Which input may influence quality assurance work and should be monitored within the context of a system for configuration management?

- A. Work performance data
- B. Project documents
- C. Scope baseline
- D. Requirements documentation

Answer: B

NEW QUESTION 21

- (Topic 1)

Which tool or technique is used to develop the human resource management plan?

- A. Ground rules
- B. Expert judgment
- C. Team-building activities
- D. Interpersonal skills

Answer: B

NEW QUESTION 25

- (Topic 1)

A regression line is used to estimate:

- A. Whether or not a process is stable or has predictable performance.
- B. How a change to the independent variable influences the value of the dependent variable.
- C. The upper and lower specification limits on a control chart.
- D. The central tendency, dispersion, and shape of a statistical distribution.

Answer: B

NEW QUESTION 26

- (Topic 1)

What are the Project Procurement Management processes?

- A. Conduct Procurements, Control Procurements, Integrate Procurements, and Close Procurements
- B. Estimate Procurements, Integrate Procurements, Control Procurements, and Validate Procurements
- C. Plan Procurement Management, Conduct Procurements, Control Procurements, and Close Procurements
- D. Plan Procurement Management, Perform Procurements, Control Procurements, and Validate Procurements

Answer: C

NEW QUESTION 28

- (Topic 1)

Which type of project management office (PMO) supplies templates, best practices, and training to project teams?

- A. Supportive
- B. Directive
- C. Controlling
- D. Instructive

Answer: A

NEW QUESTION 33

- (Topic 1)

Status of deliverables, implementation status for change requests, and forecasted estimates to complete are examples of:

- A. Earned value management.
- B. Enterprise environmental factors.
- C. Organizational process assets.
- D. Work performance information.

Answer: D

NEW QUESTION 34

- (Topic 1)

Which tool or technique is used in the Develop Project Management Plan process?

- A. Pareto diagram
- B. Performance reporting
- C. SWOT analysis
- D. Expert judgment

Answer: D

NEW QUESTION 35

- (Topic 1)

The Identify Stakeholders process is found in which Process Group?

- A. Initiating
- B. Monitoring and Controlling
- C. Planning
- D. Executing

Answer: A

NEW QUESTION 36

- (Topic 1)

Sensitivity analysis is typically displayed as a/an:

- A. Decision tree diagram.
- B. Tornado diagram.
- C. Pareto diagram.
- D. Ishikawa diagram.

Answer: B

NEW QUESTION 41

- (Topic 1)

The Perform Quality Assurance process occurs in which Process Group?

- A. Executing
- B. Monitoring and Controlling
- C. Initiating
- D. Planning

Answer: A

NEW QUESTION 43

- (Topic 1)

An input used in developing the communications management plan is:

- A. Communication models.
- B. Enterprise environmental factors.
- C. Organizational communications,
- D. Organizational cultures and styles.

Answer: B

NEW QUESTION 46

- (Topic 1)

A technique used to determine the cause and degree of difference between baseline and actual performance is:

- A. Product analysis.
- B. Variance analysis.
- C. Document analysis,
- D. Decomposition.

Answer: B

NEW QUESTION 47

- (Topic 1)

Which document describes the necessary information to determine if a project is worth the required investment?

- A. Cost baseline
- B. Service level agreement
- C. Memorandum of understanding
- D. Business case

Answer: D

NEW QUESTION 50

- (Topic 1)

An effective technique for resolving conflict that incorporates multiple viewpoints from differing perspectives to achieve consensus and commitment is:

- A. smooth/accommodate.
- B. force/direct,
- C. collaborate/problem solve,
- D. compromise/reconcile.

Answer: C

NEW QUESTION 51

- (Topic 1)

A method of obtaining early feedback on requirements by providing a working model of the expected product before actually building is known as:

- A. Benchmarking.
- B. Context diagrams.
- C. Brainstorming.
- D. Prototyping.

Answer: D

NEW QUESTION 52

- (Topic 1)

In a project, total float measures the:

- A. Ability to shuffle schedule activities to lessen the duration of the project.
- B. Amount of time an activity can be extended or delayed without altering the project finish date.
- C. Cost expended to restore order to the project schedule after crashing the schedule.
- D. Estimate of the total resources needed for the project after performing a forward pass.

Answer: B

NEW QUESTION 55

- (Topic 1)

Which item is a formal proposal to modify any document, deliverable, or baseline?

- A. Change request
- B. Requirements documentation
- C. Scope baseline
- D. Risk urgency assessment

Answer: A

NEW QUESTION 59

- (Topic 1)

Which basic quality tool is most useful when gathering attributes data in an inspection to identify defects?

- A. Control charts
- B. Pareto diagrams
- C. Ishikavva diagrams
- D. Checksheets

Answer: D

NEW QUESTION 61

- (Topic 1)

Which input to the Manage Stakeholder Engagement process is used to document changes that occur during the project?

- A. Issue log
- B. Change log
- C. Expert judgment
- D. Change requests

Answer: B

NEW QUESTION 62

- (Topic 1)

Plan Schedule Management is a process in which Knowledge Area?

- A. Project Scope Management
- B. Project Human Resource Management
- C. Project Integration Management
- D. Project Time Management

Answer: D

NEW QUESTION 67

- (Topic 1)

An output of the Direct and Manage Project Work process is:

- A. Deliverables.
- B. Activity lists.
- C. A work breakdown structure.
- D. A scope statement.

Answer: A

NEW QUESTION 71

- (Topic 1)

Which risk management strategy seeks to eliminate the uncertainty associated with a particular upside risk by ensuring that the opportunity is realized?

- A. Enhance
- B. Share
- C. Exploit
- D. Accept

Answer: C

NEW QUESTION 73

- (Topic 1)

An output of the Manage Stakeholder Engagement process is:

- A. change requests
- B. enterprise environmental factors
- C. the stakeholder management plan
- D. the change log

Answer: A

NEW QUESTION 75

- (Topic 1)

Which stakeholder classification model groups stakeholders based on their level of authority and their active involvement in the project?

- A. Power/influence grid
- B. Power/interest grid
- C. Influence/impact grid
- D. Salience model

Answer: A

NEW QUESTION 78

- (Topic 1)

Which tool or technique is effective in a project in which the deliverable is not a service or result?

- A. Inspection
- B. Variance analysis
- C. Decomposition
- D. Product analysis

Answer: D

NEW QUESTION 80

- (Topic 1)

A key benefit of the Manage Communications process is that it enables:

- A. The best use of communication methods.
- B. An efficient and effective communication flow.
- C. Project costs to be reduced.
- D. The best use of communication technology.

Answer: B

NEW QUESTION 82

- (Topic 1)

Which Process Group and Knowledge Area include the Sequence Activities process?

- A. Executing Process Group and Project Time Management
- B. Executing Process Group and Project Cost Management
- C. Planning Process Group and Project Time Management
- D. Planning Process Group and Project Cost Management

Answer: C

NEW QUESTION 83

- (Topic 1)

Which cost is associated with nonconformance?

- A. Liabilities
- B. Inspections
- C. Training
- D. Equipment

Answer: A

NEW QUESTION 85

- (Topic 2)

Project management processes ensure the:

- A. alignment with organizational strategy
- B. efficient means to achieve the project objectives
- C. performance of the project team
- D. effective flow of the project throughout its life cycle

Answer: D

NEW QUESTION 88

- (Topic 2)

The degree, amount, or volume of risk that an organization or individual will withstand is known as its risk:

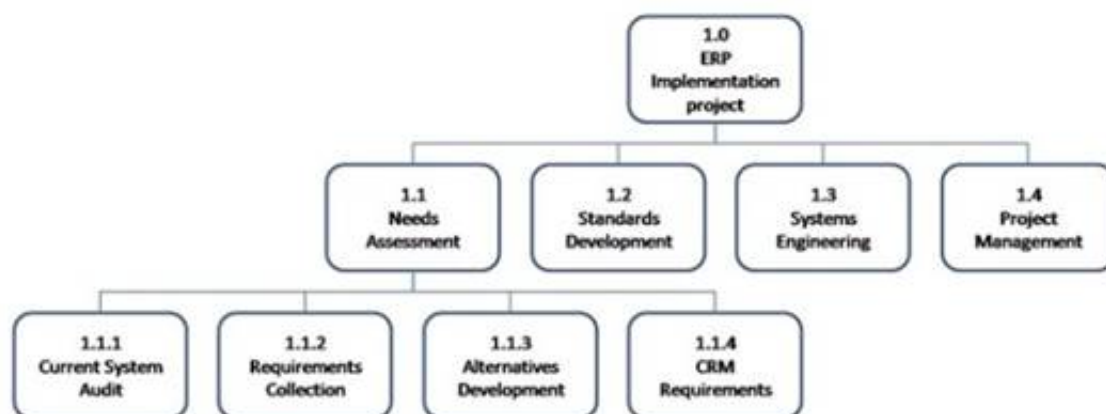
- A. Analysis
- B. Appetite
- C. Tolerance
- D. Response

Answer: C

NEW QUESTION 89

- (Topic 2)

Which type of graphic is displayed below?



- A. Work breakdown structure
- B. Context diagram
- C. Control chart
- D. Pareto diagram

Answer: A

NEW QUESTION 94

- (Topic 2)

Using parametric estimating, if an assigned resource is capable of producing 120 units per hour, how many hours are required to produce 12,000 units?

- A. 100
- B. 120
- C. 1,000
- D. 1,200

Answer: A

NEW QUESTION 98

- (Topic 2)

Retreating from an actual or potential conflict or postponing the issue to be better prepared or to be resolved by others describes which of the five general techniques for managing conflict?

- A. Smooth/accommodate
- B. Withdraw/avoid
- C. Compromise/reconcile

D. Force/direct

Answer: B

NEW QUESTION 102

- (Topic 2)

Which tool or technique is required in order to determine the project budget?

- A. Cost of quality
- B. Historical relationships
- C. Project management software
- D. Forecasting

Answer: B

NEW QUESTION 103

- (Topic 2)

Organizational process assets, a lessons-learned database, and historical information are all inputs to which process?

- A. Plan Cost Management
- B. Plan Scope Management
- C. Plan Stakeholder Management
- D. Plan Schedule Management

Answer: C

NEW QUESTION 107

- (Topic 2)

The primary benefit of the Plan Schedule Management process is that it:

- A. provides guidance to identify time or schedule challenges within the project.
- B. tightly links processes to create a seamless project schedule.
- C. guides how the project schedule will be managed throughout the project.
- D. creates an overview of all activities broken down into manageable subsections.

Answer: C

NEW QUESTION 108

- (Topic 2)

Which items are components of a project management plan?

- A. Change management plan, process improvement plan, and scope management plan
- B. Agreements, procurement management plan, and work performance information
- C. Schedule management plan, project schedule, and resource calendars
- D. Scope baseline, project statement of work, and requirements traceability matrix

Answer: A

NEW QUESTION 111

- (Topic 2)

Which Perform Quality Assurance tool or technique is used to identify a problem, discover the underlying causes that lead to it, and develop preventative actions?

- A. Inspection
- B. Quality audits
- C. Design of experiments
- D. Root cause analysis

Answer: D

NEW QUESTION 113

- (Topic 2)

Which element does a project charter contain?

- A. Management reserves
- B. Work breakdown structure
- C. Stakeholder list
- D. Stakeholder register

Answer: C

NEW QUESTION 116

- (Topic 2)

In the Plan Procurement Management process, which source selection criteria analyzes if the seller's proposed technical methodologies, techniques, solutions, and services meet the procurement documents requirements?

- A. Technical approach
- B. Technical capability
- C. Business size and type
- D. Production capacity and interest

Answer: A

NEW QUESTION 120

- (Topic 2)

When painting a bedroom, preparing the walls can be done while the paint is being chosen. This is an example of a:

- A. lead
- B. lag
- C. mandatory dependency
- D. internal dependency

Answer: A

NEW QUESTION 123

- (Topic 2)

Job satisfaction, challenging work, and sufficient financial compensation are values related to which interpersonal skill?

- A. Influencing
- B. Motivation
- C. Negotiation
- D. Trust building

Answer: B

NEW QUESTION 124

- (Topic 2)

Grouping the stakeholders based on their level of authority and their level of concern regarding project outcomes describes which classification model for stakeholder analysis?

- A. Influence/impact grid
- B. Power/influence grid
- C. Power/interest grid
- D. Salience model

Answer: C

NEW QUESTION 129

- (Topic 2)

Every project creates a unique product, service, or result that may be:

- A. tangible
- B. targeted
- C. organized
- D. variable

Answer: A

NEW QUESTION 131

- (Topic 2)

Which change request is an intentional activity that realigns the performance of the project work with the project management plan?

- A. Update
- B. Preventive action
- C. Defect repair
- D. Corrective action

Answer: D

NEW QUESTION 133

- (Topic 2)

Which action is included in the Control Costs process?

- A. Identify how the project costs will be planned, structured, and controlled
- B. Determine policies, objectives, and responsibilities to satisfy stakeholder needs
- C. Develop an approximation of the monetary resources needed to complete project activities
- D. Monitor cost performance to isolate and understand variances from the approved cost baseline

Answer: D

NEW QUESTION 135

- (Topic 2)

An example of a group decision-making technique is:

- A. nominal group technique
- B. majority
- C. affinity diagram
- D. multi-criteria decision analysis

Answer: B

NEW QUESTION 137

- (Topic 2)

An output of the Perform Integrated Change Control process is:

- A. Deliverables.
- B. Validated changes.
- C. The change log.
- D. The requirements traceability matrix.

Answer: C

NEW QUESTION 140

- (Topic 2)

Which process is conducted from project inception through completion and is ultimately the responsibility of the project manager?

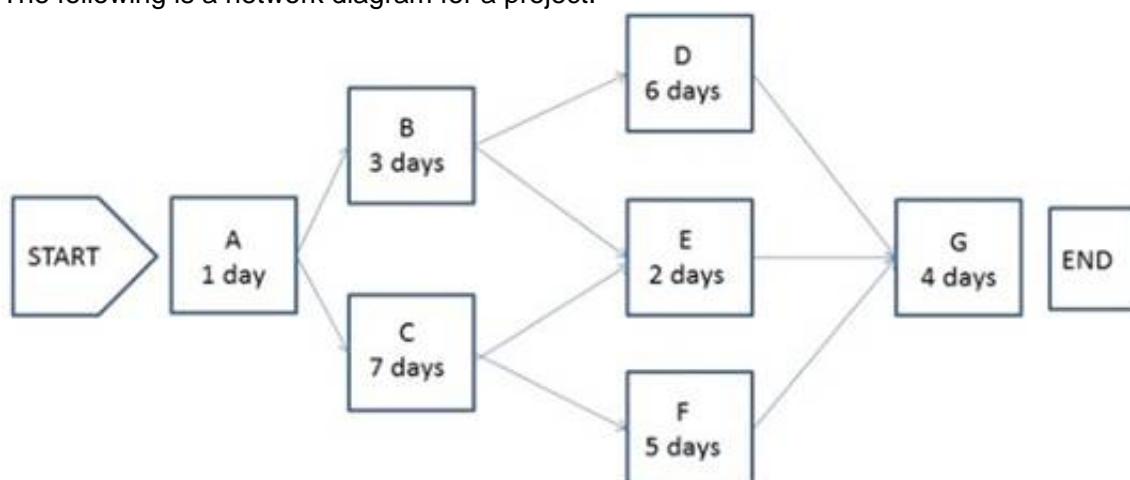
- A. Control Quality
- B. Monitor and Control Project Work
- C. Control Scope
- D. Perform Integrated Change Control

Answer: D

NEW QUESTION 144

- (Topic 2)

The following is a network diagram for a project.



What is the critical path for the project?

- A. A-B-D-G
- B. A-B-E-G
- C. A-C-F-G
- D. A-C-E-G

Answer: C

NEW QUESTION 149

- (Topic 2)

Technical capability, past performance, and intellectual property rights are examples of:

- A. performance measurement criteria
- B. source selection criteria
- C. product acceptance criteria
- D. phase exit criteria

Answer: B

NEW QUESTION 150

- (Topic 2)

Which tool or technique used in the Control Procurements process can be conducted during the execution of the project to verify compliance with deliverables?

- A. Procurement documents
- B. Inspection and audits
- C. Estimate budget
- D. Risk register

Answer: B

NEW QUESTION 155

- (Topic 2)

An element of the modern quality management approach used to achieve compatibility with the International Organization for Standardization (ISO) is known as:

- A. Forecasting,
- B. Brainstorming.
- C. Historical databases.
- D. Cost of quality.

Answer: D

NEW QUESTION 160

- (Topic 2)

A projects purpose or justification, measurable project objectives and related success criteria, a summary milestone schedule, and a summary budget are all components of which document?

- A. Work breakdown structure
- B. Requirements document
- C. Project charter
- D. Project management plan

Answer: C

NEW QUESTION 165

- (Topic 2)

Funding limit reconciliation is a tool and technique of which Project Cost Management process?

- A. Estimate Costs
- B. Control Costs
- C. Plan Cost Management
- D. Determine Budget

Answer: D

NEW QUESTION 168

- (Topic 2)

Project Stakeholder Management focuses on:

- A. project staff assignments
- B. project team acquisition
- C. managing conflicting interests
- D. communication methods

Answer: C

NEW QUESTION 170

- (Topic 2)

Which document in the project management plan can be updated in the Plan Procurement Management process?

- A. Budget estimates
- B. Risk matrix
- C. Requirements documentation
- D. Procurement documents

Answer: C

NEW QUESTION 171

- (Topic 2)

Which output of Project Cost Management consists of quantitative assessments of the probable costs required to complete project work?

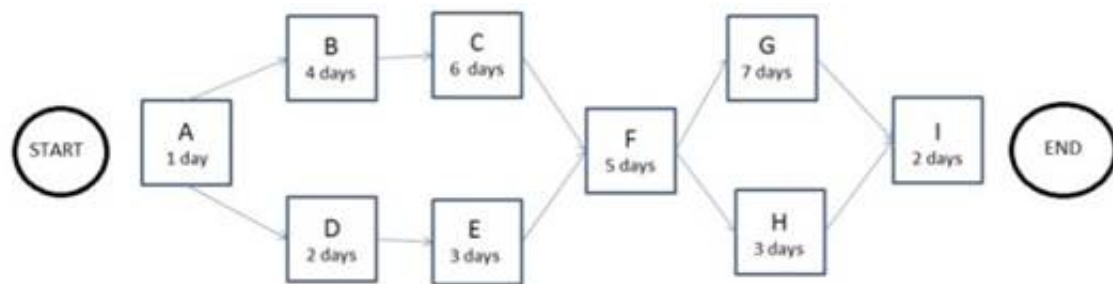
- A. Activity cost estimates
- B. Earned value management
- C. Cost management plan
- D. Cost baseline

Answer: A

NEW QUESTION 176

- (Topic 2)

The following is a network diagram for a project.



How many possible paths are identified for this project?

- A. 3
- B. 4
- C. 6
- D. 7

Answer: B

NEW QUESTION 179

- (Topic 2)

The following chart contains information about the tasks in a project.

Task	PV	AC	EV
1	10,000	10,000	10,000
2	10,000	8,000	10,000
3	10,000	8,000	8,000
4	9,000	12,000	10,000
5	10,000	12,000	12,000
6	10,000	10,000	12,000
7	12,000	12,000	10,000
8	10,000	8,000	9,000
9	12,000	10,000	11,000

Based on the chart, what is the cost performance index (CPI) for Task 2?

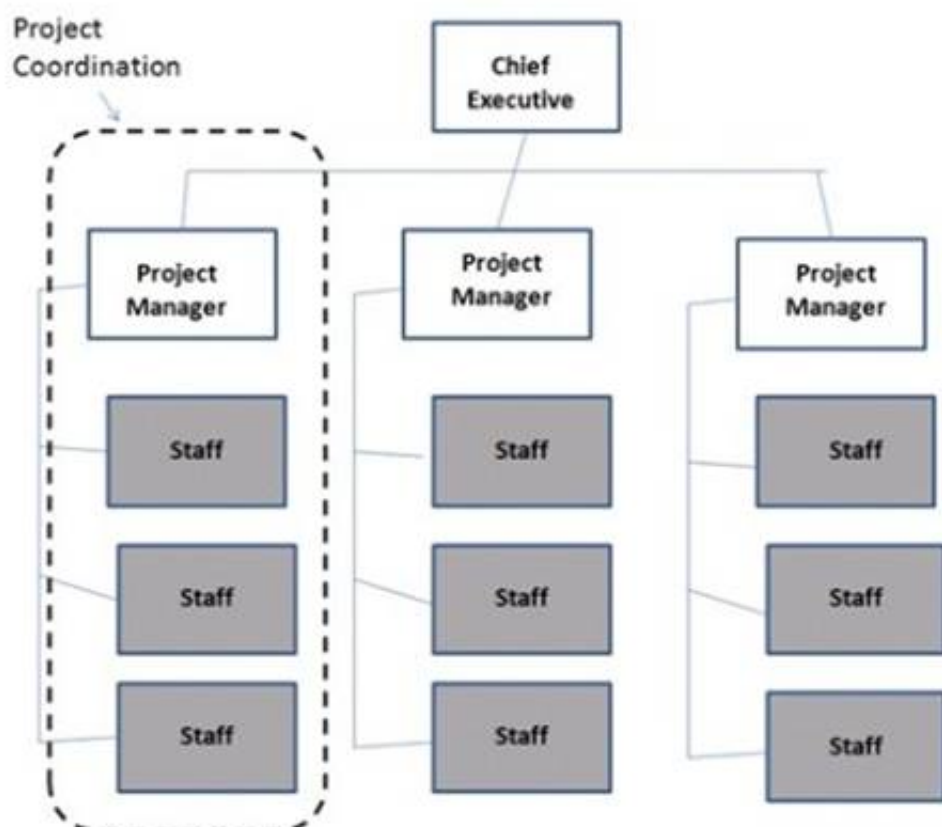
- A. 0.8
- B. 1
- C. 1.25
- D. 1.8

Answer: C

NEW QUESTION 181

- (Topic 2)

Which type of organizational structure is displayed in the diagram provided?



- A. Balanced matrix
- B. Projectized
- C. Strong matrix
- D. Functional

Answer: B

NEW QUESTION 186

- (Topic 2)

Which items are an output of the Perform Integrated Change Control process?

- A. Work performance reports
- B. Accepted deliverables
- C. Project management plan updates
- D. Organizational process assets

Answer: C

NEW QUESTION 188

- (Topic 2)

A special type of bar chart used in sensitivity analysis for comparing the relative importance of the variables is called a:

- A. triangular distribution
- B. tornado diagram
- C. beta distribution
- D. fishbone diagram

Answer: B

NEW QUESTION 192

- (Topic 2)

Which Project Time Management process includes bottom-up estimating as a tool or technique?

- A. Estimate Activity Resources
- B. Sequence Activities
- C. Estimate Activity Durations
- D. Develop Schedule

Answer: A

NEW QUESTION 193

- (Topic 2)

Which Process Group includes the Manage Stakeholder Engagement process?

- A. Executing
- B. Planning
- C. Monitoring and Controlling
- D. Initiating

Answer: A

NEW QUESTION 197

- (Topic 2)

The following chart contains information about the tasks in a project.

Task	PV	AC	EV
1	10,000	10,000	10,000
2	10,000	8,000	10,000
3	10,000	8,000	8,000
4	9,000	12,000	10,000
5	10,000	12,000	12,000
6	10,000	10,000	12,000
7	12,000	12,000	10,000
8	10,000	8,000	9,000
9	12,000	10,000	11,000

Based on the chart, what is the schedule performance index (SPI) for Task 4?

- A. 0.83
- B. 0.9
- C. 1.11
- D. 1.33

Answer: C

NEW QUESTION 198

- (Topic 2)

An issue log is an input to which Project Human Resource Management process?

- A. Manage Project Team
- B. Acquire Project Team
- C. Plan Human Resource Management
- D. Develop Project Team

Answer: A

NEW QUESTION 202

- (Topic 2)

Impacts to other organizational areas, levels of service, and acceptance criteria are typical components of which document?

- A. Business case
- B. Work breakdown structure
- C. Requirements documentation
- D. Risk register

Answer: C

NEW QUESTION 207

- (Topic 2)

The degree of uncertainty an entity is willing to take on in anticipation of a reward is known as its risk:

- A. management
- B. response
- C. tolerance
- D. appetite

Answer: D

NEW QUESTION 210

- (Topic 2)

Project Scope Management is primarily concerned with:

- A. Developing a detailed description of the project and product.
- B. Determining how requirements will be analyzed, documented, and managed.
- C. Defining and controlling what is and is not included in the project.
- D. Formalizing acceptance of the completed project deliverables.

Answer: C

NEW QUESTION 214

- (Topic 3)

Information collected on the status of project activities being performed to accomplish the project work is known as what?

- A. Project management information system
- B. Work performance information
- C. Work breakdown structure
- D. Variance analysis

Answer: B

NEW QUESTION 218

- (Topic 3)

Projects can be divided into phases to provide better management control. Collectively, what are these phases known as?

- A. Complete project phase
- B. Project life
- C. The project life cycle
- D. Project cycle

Answer: C

NEW QUESTION 220

- (Topic 3)

When is a project finished?

- A. After verbal acceptance of the customer or sponsor
- B. After lessons learned have been documented in contract closure
- C. When the project objectives have been met
- D. After resources have been released

Answer: C

NEW QUESTION 225

- (Topic 3)

The project manager notes that stakeholders are aware of the project and potential impacts and are actively engaged in ensuring that the project is a success. The engagement level of the stakeholders should be classified as:

- A. Supportive
- B. Leading
- C. Neutral
- D. Resistant

Answer: B

NEW QUESTION 228

- (Topic 3)

A project management office manages a number of aspects including the:

- A. Project scope, schedule, cost, and quality of the products of the work packages.
- B. Central coordination of communication management across projects.
- C. Assignment of project resources to best meet project objectives.
- D. Overall risk, overall opportunity, and interdependencies among projects at the enterprise level.

Answer: D

NEW QUESTION 232

- (Topic 3)

In an organization with a projectized organizational structure, who controls the project budget?

- A. Functional manager
- B. Project manager
- C. Program manager
- D. Project management office

Answer: B

NEW QUESTION 236

- (Topic 3)

Which of the following investigates the likelihood that each specific risk will occur?

- A. Risk register
- B. Risk audits
- C. Risk urgency assessment
- D. Risk probability and impact assessment

Answer: D

NEW QUESTION 237

- (Topic 3)

Which schedule network analysis technique modifies the project schedule to account for limited resources?

- A. Human resource planning
- B. Fast tracking
- C. Critical chain method
- D. Rolling wave planning

Answer: C

NEW QUESTION 239

- (Topic 3)

Which Process Group's purpose is to track, review, and regulate the progress and performance of the project; identify any areas in which changes to the plan are required; and initiate the corresponding changes?

- A. Monitoring and Controlling
- B. Initiating
- C. Planning
- D. Executing

Answer: A

NEW QUESTION 243

- (Topic 3)

What is the function of a Project Management Office (PMO)?

- A. To focus on the coordinated planning, prioritization, and execution of projects and subprojects that are tied to the parent organizations or the client's overall business objectives.
- B. To coordinate and manage the procurement of projects relevant to the parent organization's business objectives and to administer the project charters accordingly.
- C. To administer performance reviews for the project manager and the project team members and to handle any personnel and payroll issues.
- D. To focus on the specified project objectives and to manage the scope, schedule, cost, and quality of the work packages.

Answer: A

NEW QUESTION 244

- (Topic 3)

The process of formalizing acceptance of the completed project deliverables is known as:

- A. Validate Scope.
- B. Close Project or Phase.
- C. Control Quality.
- D. Verify Scope.

Answer: A

NEW QUESTION 245

- (Topic 3)

To which process is work performance information an input?

- A. Administer Procurements
- B. Direct and Manage Project Execution
- C. Create WBS
- D. Perform Qualitative Risk Analysis

Answer: A

NEW QUESTION 248

- (Topic 3)

The integrative nature of project management requires which Process Group to interact with the other Process Groups?

- A. Planning
- B. Executing
- C. Monitoring and Controlling
- D. Project Management

Answer: C

NEW QUESTION 253

- (Topic 3)

Organizational planning impacts projects by means of project prioritization based on risk, funding, and an organizations:

- A. Budget plan
- B. Resource plan
- C. Scope plan
- D. Strategic plan

Answer: D

NEW QUESTION 256

- (Topic 3)

What is the number of stakeholders, if the project has 28 potential communication channels?

- A. 7
- B. 8
- C. 14
- D. 16

Answer: B

NEW QUESTION 257

- (Topic 3)

Which document includes the project scope, major deliverables, assumptions, and constraints?

- A. Project charter
- B. Project scope statement
- C. Scope management plan
- D. Project document updates

Answer: B

NEW QUESTION 258

- (Topic 3)

An input required in Define Scope is an organizational:

- A. structure.
- B. process asset.
- C. matrix.

D. breakdown structure.

Answer: B

NEW QUESTION 261

- (Topic 3)

A measure of cost performance that is required to be achieved with the remaining resources in order to meet a specified management goal and is expressed as the ratio of the cost needed for finishing the outstanding work to the remaining budget is known as the:

- A. budget at completion (BAC)
- B. earned value management (EVM)
- C. to-complete performance index
- D. cost performance index

Answer: C

NEW QUESTION 265

- (Topic 3)

Perform Quality Control is accomplished by:

- A. Identifying quality standards that are relevant to the project and determining how to satisfy them.
- B. Monitoring and recording the results of executing the quality activities to assess performance and recommend necessary changes.
- C. Ensuring that the entire project team has been adequately trained in quality assurance processes.
- D. Applying Monte Carlo, sampling, Pareto analysis, and benchmarking techniques to ensure conformance to quality standards.

Answer: B

NEW QUESTION 266

- (Topic 3)

What is the probability of occurrence if the risk rating is 0.56 and the impact if the risk does occur is very high (0.80)?

- A. 0.45
- B. 0.56
- C. 0.70
- D. 1.36

Answer: C

NEW QUESTION 271

- (Topic 3)

Which organizational process assets update is performed during the Close Procurements process?

- A. Procurement audit
- B. Lessons learned
- C. Performance reporting
- D. Payment requests

Answer: B

NEW QUESTION 272

- (Topic 3)

Which of the following is an enterprise environmental factor that can influence the Develop Project Charter process?

- A. Organizational standard processes
- B. Marketplace conditions
- C. Historical information
- D. Templates

Answer: B

NEW QUESTION 273

- (Topic 3)

The process of identifying and documenting the specific actions to be performed to produce the project deliverables is known as:

- A. Define Activities.
- B. Sequence Activities.
- C. Define Scope.
- D. Control Schedule.

Answer: A

NEW QUESTION 275

- (Topic 3)

Definitions of probability and impact, revised stakeholder tolerances, and tracking are components of which subsidiary plan?

- A. Cost management plan
- B. Quality management plan
- C. Communications management plan
- D. Risk management plan

Answer: D

NEW QUESTION 277

- (Topic 3)

Work performance information and cost forecasts are outputs of which Project Cost Management process?

- A. Estimate Costs
- B. Plan Cost Management
- C. Determine Budget
- D. Control Costs

Answer: D

NEW QUESTION 280

- (Topic 3)

What is a hierarchically organized depiction of the identified project risks arranged by risk category?

- A. Risk register
- B. Risk breakdown structure (RBS)
- C. Risk management plan
- D. Risk category

Answer: B

NEW QUESTION 284

- (Topic 3)

Which tools or techniques will a project manager use for Develop Project Team?

- A. Negotiation
- B. Roles and responsibilities
- C. Recognition and rewards
- D. Prizing and promoting

Answer: C

NEW QUESTION 288

- (Topic 3)

An input of the Control Schedule process is the:

- A. resource calendar.
- B. activity list.
- C. risk management plan.
- D. organizational process assets.

Answer: D

NEW QUESTION 292

- (Topic 3)

The individual or group that provides resources and support for a project and is accountable for success is the:

- A. sponsor
- B. customer
- C. business partners
- D. functional managers

Answer: A

NEW QUESTION 295

- (Topic 3)

An output of the Develop Project Team process is:

- A. change requests
- B. team performance assessments
- C. project staff assignments
- D. project documents updates

Answer: B

NEW QUESTION 299

- (Topic 4)

The project scope statement and resource calendars are inputs to which Project Time Management process?

- A. Sequence Activities
- B. Estimate Activity Resources
- C. Develop Schedule
- D. Control Schedule

Answer: C

NEW QUESTION 301

- (Topic 4)

Which of the following is a tool and technique used in the Develop Schedule process?

- A. Three-point estimates
- B. Resource leveling
- C. Precedence diagramming method
- D. Bottom-up estimating

Answer: B

NEW QUESTION 304

- (Topic 4)

Which of the following is an input to Develop Human Resource Plan?

- A. Team performance assessment
- B. Roles and responsibilities
- C. Staffing management plan
- D. Enterprise environmental factors

Answer: D

NEW QUESTION 306

- (Topic 4)

Which piece of information is part of the WBS Dictionary?

- A. Responsible organization
- B. Change requests
- C. Validated deliverables
- D. Organizational process assets

Answer: A

NEW QUESTION 308

- (Topic 4)

Ensuring that both parties meet contractual obligations and that their own legal rights are protected is a function of:

- A. Conduct Procurements.
- B. Close Procurements.
- C. Administer Procurements,
- D. Plan Procurements.

Answer: C

NEW QUESTION 313

- (Topic 4)

Which type of chart is a graphic representation of a process showing the relationships among process steps?

- A. Control
- B. Bar
- C. Flow
- D. Pareto

Answer: C

NEW QUESTION 317

- (Topic 4)

Testing falls into which of the following categories of cost of quality?

- A. Internal failure costs
- B. Prevention costs
- C. Appraisal costs
- D. External failure costs

Answer: C

NEW QUESTION 319

- (Topic 4)

Which of the following is a tool or technique of the Define Activities process?

- A. Rolling wave planning
- B. Precedence diagramming method (PDM)
- C. Alternatives analysis
- D. Parametric estimating

Answer: A

NEW QUESTION 322

- (Topic 4)

Another name for an Ishikawa diagram is:

- A. cause and effect diagram.
- B. control chart.
- C. flowchart.
- D. histogram.

Answer: A

NEW QUESTION 324

- (Topic 4)

A project has a current cost performance index (CPI) of 1.25. To date, US\$10,000 have been spent on performing the project work. What is the earned value of the work completed to date?

- A. US\$S000
- B. US\$9500
- C. US\$10,000
- D. US\$12,500

Answer: D

NEW QUESTION 329

- (Topic 4)

Which of the following is an output from Control Scope?

- A. Change requests
- B. Variance analysis
- C. Accepted deliverables
- D. Requirements documentation

Answer: A

NEW QUESTION 333

- (Topic 4)

Prioritizing risks for further analysis or action by assessing and combining their probability of occurrence and impact takes place in which process?

- A. Monitor and Control Risks
- B. Plan Risk Management
- C. Perform Qualitative Risk Analysis
- D. Perform Quantitative Risk Analysis

Answer: C

NEW QUESTION 336

- (Topic 4)

Which process should be conducted from the project inception through completion?

- A. Monitor and Control Project Work
- B. Perform Quality Control
- C. Perform Integrated Change Control
- D. Monitor and Control Risks

Answer: C

NEW QUESTION 337

- (Topic 4)

In which process might a project manager use risk reassessment as a tool and technique?

- A. Perform Qualitative Risk Analysis
- B. Monitor and Control Risk
- C. Monitor and Control Project Work
- D. Plan Risk Responses

Answer: B

NEW QUESTION 341

- (Topic 4)

The project manager at an organization has just realized that some of the engineering staff has been allocated to project Y and will not be available to finish task X. The project manager has also discovered that at the current pace, it will not be possible to complete the project on time. Due to cost constraints, hiring more work force is not a viable option. Which tools are at the manager's disposal?

- A. Resource leveling and fast tracking
- B. Fast tracking and crashing
- C. Crashing and applying leads and lags
- D. Scheduling tools and applying leads and lags

Answer: A

NEW QUESTION 343

- (Topic 4)

The process of monitoring the status of the project to update project progress and manage changes to the schedule baseline is:

- A. Control Schedule.
- B. Quality Control.
- C. Perform Integrated Change Control.
- D. Develop Schedule.

Answer: A

NEW QUESTION 346

- (Topic 4)

Which cost estimate technique includes contingencies to account for cost uncertainty?

- A. Vendor bid analysis
- B. Three-point estimates
- C. Parametric estimating
- D. Reserve analysis

Answer: D

NEW QUESTION 347

- (Topic 4)

Which written document helps monitor who is responsible for resolving specific problems and concerns by a target date?

- A. Project Plan
- B. Responsibility Matrix
- C. Issue Log
- D. Scope Document

Answer: C

NEW QUESTION 351

- (Topic 4)

The PV is \$1000, EV is \$2000, and AC is \$1500. What is CPI?

- A. 1.33
- B. 2
- C. 0.75
- D. 0.5

Answer: A

NEW QUESTION 352

- (Topic 4)

Which of the following outputs from the Control Schedule process aids in the communication of schedule variance (SV), schedule performance index (SPI), or any performance status to stakeholders?

- A. Performance organizations
- B. Schedule baselines
- C. Work performance measurements
- D. Change requests

Answer: C

NEW QUESTION 355

- (Topic 4)

Which type of analysis is used as a general management technique within the Plan Procurements process?

- A. Risk assessment analysis
- B. Make or buy analysis
- C. Contract value analysis
- D. Cost impact analysis

Answer: B

NEW QUESTION 360

- (Topic 4)

In which domain of project management would a Pareto chart provide useful information?

- A. Project Scope Management
- B. Project Time Management
- C. Project Communications Management
- D. Project Quality Management

Answer: D

NEW QUESTION 361

- (Topic 4)

"Tailoring" is defined as the:

- A. effort of addressing each process to determine which are appropriate and their appropriate degree of rigor.
- B. act of creating a project team with the specialized skills required to produce a required product or service.
- C. action taken to bring a defective or nonconforming component into compliance with requirements or specifications.
- D. adjustment of the respective influences of time, cost, and quality in order to most efficiently achieve scope.

Answer: A

NEW QUESTION 366

- (Topic 4)

As the project progresses, which of the following is routinely collected from the project activities?

- A. Communication management activities
- B. Change requests
- C. Configuration verification and audit
- D. Work performance information

Answer: D

NEW QUESTION 371

- (Topic 4)

Co-location is a tool and technique of:

- A. Develop Human Resource Plan.
- B. Manage Project Team.
- C. Develop Project Team.
- D. Acquire Project Team.

Answer: C

NEW QUESTION 374

- (Topic 4)

In the Estimate Activity Durations process, productivity metrics and published commercial information inputs are part of the:

- A. enterprise environmental factors.
- B. organizational process assets.
- C. project management plan,
- D. project funding requirements.

Answer: A

NEW QUESTION 378

- (Topic 4)

The key benefit of the Monitoring and Controlling Process Group is the ability to:

- A. establish and manage project communication channels, both external and internal to the project team.
- B. influence the stakeholders that want to circumvent integrated change control so that their changes are implemented.
- C. monitor the ongoing project team against the team performance assessments and the project performance baseline.
- D. observe and measure project performance regularly and consistently to identify variances from the project management plan.

Answer: D

NEW QUESTION 379

- (Topic 4)

Which tool or technique is used in Close Procurements?

- A. Contract plan
- B. Procurement plan
- C. Closure process

D. Procurement audits

Answer: D

NEW QUESTION 384

- (Topic 4)

Which activity involves ensuring that the composition of a projects configuration items is correct?

- A. Configuration Identification
- B. Configuration Status Accounting
- C. Configuration Verification and Audit
- D. Configuration Quality Assurance

Answer: C

NEW QUESTION 389

- (Topic 4)

What is the schedule performance index (SPI) using the following data? BAC = \$100,000 PV = \$50,000 AC = \$80,000 EV = \$40,000

- A. 1
- B. 0.4
- C. 0.5
- D. 0.8

Answer: D

NEW QUESTION 392

- (Topic 5)

Which process is responsible for monitoring the status of the project and product scope and managing changes to the scope baseline?

- A. Variance Analysis
- B. Define Scope
- C. Verify Scope
- D. Control Scope

Answer: D

NEW QUESTION 396

- (Topic 5)

At the end of the project, what will be the value of SV?

- A. Positive
- B. Zero
- C. Negative
- D. Greater than one

Answer: B

NEW QUESTION 400

- (Topic 5)

Which of the following is an output of the Conduct Procurements process?

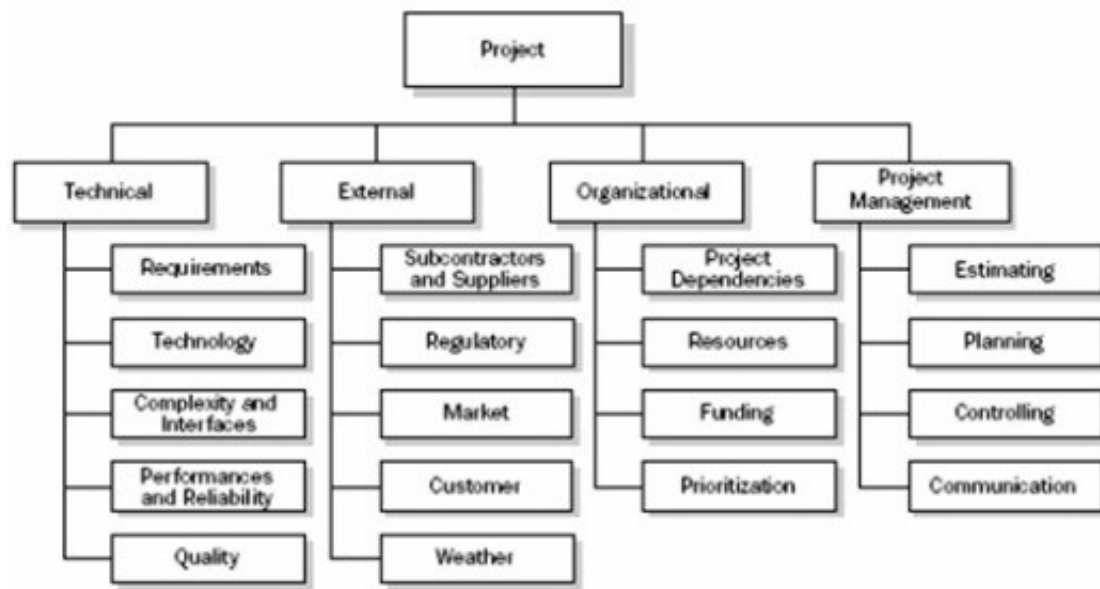
- A. Project statement of work
- B. Selected sellers
- C. Risk register updates
- D. Teaming agreements

Answer: B

NEW QUESTION 404

- (Topic 5)

The diagram below is an example of a:



- A. Risk breakdown structure (RBS).
- B. Project team.
- C. SWOT Analysis.
- D. Work breakdown structure (WBS).

Answer: A

NEW QUESTION 405

- (Topic 5)

The total of the planned value (PV) is also known as:

- A. work breakdown structure (WBS).
- B. schedule target.
- C. performance measurement baseline (PMB).
- D. earned value baseline.

Answer: C

NEW QUESTION 410

- (Topic 5)

Projects are separated into phases or subprojects; these phases include:

- A. feasibility study, concept development, design, and prototype.
- B. initiate, plan, execute, and monitor.
- C. Develop Charter, Define Activities, Manage Stakeholder Expectations, and Report Performance.
- D. Identify Stakeholders, develop concept, build, and test.

Answer: A

NEW QUESTION 412

- (Topic 5)

Expected monetary value (EMV) is computed by which equation?

- A. Value of each possible outcome multiplied by probability of occurrence
- B. Value of each possible outcome multiplied by probability of non-occurrence
- C. Multiplying the value of each possible outcome by the probability of occurrence and adding the products together
- D. Multiplying the value of each possible outcome by the probability of non-occurrence and adding the products together

Answer: C

NEW QUESTION 415

- (Topic 5)

A tool and technique used during the Define Scope process is:

- A. facilitated workshops.
- B. observations.
- C. questionnaires and surveys.
- D. group creativity techniques.

Answer: A

NEW QUESTION 417

- (Topic 5)

Which of the following is a tool and technique used to monitor risk?

- A. Technical performance measurement
- B. Cost performance baseline
- C. Benchmarking
- D. Cost of quality

Answer: A

NEW QUESTION 419

- (Topic 5)

In the basic communication model, which term refers to the method that is used to convey the message?

- A. Decode
- B. Encode
- C. Medium
- D. Noise

Answer: C

NEW QUESTION 421

- (Topic 5)

Which of the following response strategies are appropriate for negative risks or threats?

- A. Share, Accept, Transfer, or Mitigate
- B. Exploit, Enhance, Share, or Accept
- C. Mitigate, Share, Avoid, or Accept
- D. Avoid, Mitigate, Transfer, or Accept

Answer: D

NEW QUESTION 423

- (Topic 5)

Risk responses reflect an organization's perceived balance between:

- A. risk taking and risk avoidance.
- B. known risk and unknown risk.
- C. identified risk and analyzed risk.
- D. varying degrees of risk.

Answer: A

NEW QUESTION 428

- (Topic 5)

The technique of subdividing project deliverables into smaller, more manageable components until the work and deliverables are defined to the work package level is called:

- A. a control chart.
- B. baseline.
- C. Create WBS.
- D. decomposition.

Answer: D

NEW QUESTION 432

- (Topic 5)

An input to the Estimate Activity Resources process is:

- A. Activity resource requirements.
- B. Published estimating data.
- C. Resource calendars.
- D. Resource breakdown structure (RBS).

Answer: C

NEW QUESTION 434

- (Topic 5)

Which characteristics do effective project managers possess?

- A. Project management knowledge, performance skills, and personal effectiveness
- B. Preparedness, project management knowledge, and personality characteristics
- C. General management, preparedness, and project management knowledge
- D. Assertiveness, collaboration, and performance skills

Answer: A

NEW QUESTION 439

- (Topic 5)

Which type of diagram includes groups of information and shows relationships between factors, causes, and objectives?

- A. Affinity
- B. Scatter

- C. Fishbone
- D. Matrix

Answer: D

NEW QUESTION 443

- (Topic 5)

The group technique that enhances brainstorming with a voting process used to rank the most useful ideas for prioritization is called the:

- A. majority rule technique.
- B. nominal group technique.
- C. Delphi technique,
- D. idea/mind mapping technique.

Answer: B

NEW QUESTION 448

- (Topic 5)

Which tool or technique can a project manager use to select in advance a team member who will be crucial to the task?

- A. Acquisition
- B. Negotiation
- C. Virtual team
- D. Pre-assignment

Answer: D

NEW QUESTION 452

- (Topic 5)

Which is one of the determining factors used to calculate CPI?

- A. EV
- B. SPI
- C. PV
- D. ETC

Answer: A

NEW QUESTION 453

- (Topic 5)

Which is an output of the Collect Requirements process?

- A. Requirements traceability matrix
- B. Project scope statement
- C. WBS dictionary
- D. Work performance measurements

Answer: A

NEW QUESTION 456

- (Topic 5)

Which of the following is an output of Define Scope?

- A. Project scope statement
- B. Project charter
- C. Project plan
- D. Project schedule

Answer: A

NEW QUESTION 459

- (Topic 5)

Which of the following is a project constraint?

- A. Twenty-five percent staff turnover is expected.
- B. The technology to be used is cutting-edge.
- C. Project leadership may change due to volatile political environment.
- D. The product is needed in 250 days.

Answer: D

NEW QUESTION 464

- (Topic 5)

Risk exists the moment that a project is:

- A. planned.
- B. conceived.
- C. chartered.
- D. executed.

Answer: B

NEW QUESTION 467

- (Topic 5)

Which of the following is an input to Direct and Manage Project Execution?

- A. Performance reports
- B. Project charter
- C. Outputs from planning processes
- D. Enterprise environmental factors

Answer: D

NEW QUESTION 472

.....

Thank You for Trying Our Product

* 100% Pass or Money Back

All our products come with a 90-day Money Back Guarantee.

* One year free update

You can enjoy free update one year. 24x7 online support.

* Trusted by Millions

We currently serve more than 30,000,000 customers.

* Shop Securely

All transactions are protected by VeriSign!

100% Pass Your PMI-100 Exam with Our Prep Materials Via below:

<https://www.certleader.com/PMI-100-dumps.html>