



Microsoft

Exam Questions AZ-800

Administering Windows Server Hybrid Core Infrastructure

About ExamBible

[Your Partner of IT Exam](#)

Found in 1998

ExamBible is a company specialized on providing high quality IT exam practice study materials, especially Cisco CCNA, CCDA, CCNP, CCIE, Checkpoint CCSE, CompTIA A+, Network+ certification practice exams and so on. We guarantee that the candidates will not only pass any IT exam at the first attempt but also get profound understanding about the certificates they have got. There are so many alike companies in this industry, however, ExamBible has its unique advantages that other companies could not achieve.

Our Advances

* 99.9% Uptime

All examinations will be up to date.

* 24/7 Quality Support

We will provide service round the clock.

* 100% Pass Rate

Our guarantee that you will pass the exam.

* Unique Gurantee

If you do not pass the exam at the first time, we will not only arrange FULL REFUND for you, but also provide you another exam of your claim, ABSOLUTELY FREE!

NEW QUESTION 1

SIMULATION - (Topic 4)

Task 9

You plan to create group managed service accounts (gMSAs).

You need to configure the domain to support the creation of gMSAs.

- A. Mastered
- B. Not Mastered

Answer: A**Explanation:**

To configure the domain to support the creation of gMSAs, you need to perform the following steps:

? On a domain controller or a computer that has the Remote Server Administration

Tools (RSAT) installed, open PowerShell as an administrator and run the following command to install the Active Directory module:

Install-WindowsFeature -Name RSAT-AD-PowerShell

? Run the following command to create a Key Distribution Service (KDS) root key, which is required for generating passwords for gMSAs. You only need to do this once per domain:

Add-KdsRootKey -EffectiveImmediately

? Wait for at least 10 hours for the KDS root key to replicate to all domain controllers in the domain. Alternatively, you can use the -EffectiveTime parameter to specify a past date and time for the KDS root key, but this is not recommended for security reasons. For more information, see Add-KdsRootKey.

? After the KDS root key is replicated, you can create and configure gMSAs using

the New-ADServiceAccount and Set-ADServiceAccount cmdlets. For more information, see Create a gMSA and Configure a gMSA.

NEW QUESTION 2

SIMULATION - (Topic 4)

Task 10

You need to configure Hyper-V to ensure that running virtual machines can be moved between SRV1 and SRV2 without downtime.

You do NOT need to move any virtual machines at this time.

- A. Mastered
- B. Not Mastered

Answer: A**Explanation:**

One possible solution to configure Hyper-V to ensure that running virtual machines can be moved between SRV1 and SRV2 without downtime is to use Live Migration. Live Migration is a feature of Hyper-V that allows you to move a running virtual machine from one host to another without any noticeable interruption of service. To set up Live Migration between SRV1 and SRV2, you need to perform the following steps:

? On both SRV1 and SRV2, open Hyper-V Manager from the Administrative

Tools menu or by typing virtmgmt.msc in the Run box.

? In the left pane, right-click on the name of the server and select Hyper-V Settings.

? In the Hyper-V Settings dialog box, select Live Migrations in the navigation pane.

? Check the box Enable incoming and outgoing live migrations.

? Under Authentication protocol, select the method that you want to use to authenticate the live migration traffic between the servers. You can choose either Kerberos or CredSSP. Kerberos does not require you to sign in to the source server before starting a live migration, but it requires you to configure constrained delegation on the domain controller. CredSSP does not require you to configure constrained delegation, but it requires you to sign in to the source server through a local console session, a Remote Desktop session, or a remote Windows PowerShell session. For more information on how to configure constrained delegation, see Configure constrained delegation.

? Under Performance options, select the option that best suits your network configuration and performance requirements. You can choose either TCP/IP or Compression or SMB. TCP/IP uses a single TCP connection for the live migration traffic. Compression uses multiple TCP connections and compresses the live migration traffic to reduce the migration time and network bandwidth usage. SMB uses the Server Message Block (SMB) 3.0 protocol and can leverage SMB features such as SMB Multichannel and SMB Direct. For more information on how to choose the best performance option, see Choose a live migration performance option.

? Under Advanced Features, you can optionally enable the Use any available network for live migration option, which allows Hyper-V to use any available network adapter on the source and destination servers for live migration. If you do not enable this option, you need to specify one or more network adapters to be used for live migration by clicking on the Add button and selecting the network adapter from the list. You can also change the order of preference by using the Move Up and Move Down buttons.

? Click OK to apply the settings.

Now, you have configured Hyper-V to enable live migration between SRV1 and SRV2. You can use Hyper-V Manager or Windows PowerShell to initiate a live migration of a running virtual machine from one server to another.

NEW QUESTION 3

SIMULATION - (Topic 4)

Task 7

You need to monitor the security configuration of DC1 by using Microsoft Defender for Cloud.

The required source files are located in a folder named \\dc1.contoso.com\install.

- A. Mastered
- B. Not Mastered

Answer: A**Explanation:**

One possible solution to monitor the security configuration of DC1 by using Microsoft Defender for Cloud is to use the Guest Configuration feature. Guest Configuration is a service that audits settings inside Linux and Windows virtual machines (VMs) to assess their compliance with your organization's security policies. You can use Guest Configuration to monitor the security baseline settings for Windows Server in the Microsoft Defender for Cloud portal by following these steps:

? On DC1, open a web browser and go to the folder named \\dc1.contoso.com\install.

Download the Guest Configuration extension file (GuestConfiguration.msi) and save it to a local folder, such as C:\Temp.

2. Run the Guest Configuration extension file and follow the installation wizard. You can choose to install the extension for all users or only for the current user. For more information on how to install the Guest Configuration extension, see Install the Guest Configuration extension.

? After the installation is complete, sign in to the Microsoft Defender for Cloud portal (2).

? In the left pane, select Security Center and then Recommendations.

? In the recommendations list, find and select Vulnerabilities in security configuration on your Windows machines should be remediated (powered by Guest Configuration).

? In the Remediate Security Configurations page, you can see the compliance status of your Windows VMs, including DC1, based on the Azure Compute Benchmark.

The Azure Compute Benchmark is a set of rules that define the desired configuration state of your VMs. You can also see the number of failed, passed, and skipped rules for each VM. For more information on the Azure Compute Benchmark, see Microsoft cloud security benchmark: Azure compute benchmark is now available.

? To view the details of the security configuration of DC1, click on the VM name and then select View details. You can see the list of rules that apply to DC1 and their compliance status. You can also see the severity, description, and remediation steps for each rule. For example, you can see if DC1 has the latest security updates installed, if the firewall is enabled, if the password policy is enforced, and so on.

? To monitor the security configuration of DC1 over time, you can use the Compliance over time chart, which shows the trend of compliance status for DC1 in the past 30 days. You can also use the Compliance breakdown chart, which shows the distribution of compliance status for DC1 by rule severity.

By using Guest Configuration, you can monitor the security configuration of DC1 by using Microsoft Defender for Cloud and ensure that it meets your organization's security standards. You can also use Guest Configuration to monitor the security configuration of other Windows and Linux VMs in your Azure environment.

NEW QUESTION 4

SIMULATION - (Topic 4)

Task 1

You need to prevent domain users from saving executable files in a share named \\SRV1\Data. The users must be able to save other files to the share.

- A. Mastered
- B. Not Mastered

Answer: A

Explanation:

One possible solution to prevent domain users from saving executable files in a share named \\SRV1\Data is to use file screening on the file server. File screening allows you to block certain files from being saved based on their file name extension. Here are the steps to configure file screening:

? On the file server, open File Server Resource Manager from the Administrative Tools menu.

? In the left pane, expand File Screening Management and click on File Groups.

? Right-click on File Groups and select Create File Group.

? In the File Group Properties dialog box, enter a name for the file group, such as Executable Files.

? In the Files to include box, enter the file name extensions that you want to block, such as .exe, .bat, .cmd, .com, .msi, .scr. You can use wildcards to specify multiple extensions, such as *.exe.

? Click OK to create the file group.

? In the left pane, click on File Screen Templates.

? Right-click on File Screen Templates and select Create File Screen Template.

such as Block Executable Files.

? In the File Screen Template Properties dialog box, enter a name for the template.

? On the Settings tab, select the option Active screening. Do not allow users to save unauthorized files.

? On the File Groups tab, check the box next to the file group that you created, such as Executable Files.

? On the Notification tab, you can configure how to notify users and administrators when a file screening event occurs, such as sending an email, logging an event, or running a command or script. You can also customize the message that users see when they try to save a blocked file.

? Click OK to create the file screen template.

? In the left pane, click on File Screens.

? Right-click on File Screens and select Create File Screen.

? In the Create File Screen dialog box, enter the path of the folder that you want to apply the file screening to, such as \\SRV1\Data.

? Select the option Derive properties from this file screen template (recommended) and choose the template that you created, such as Block Executable Files.

? Click Create to create the file screen.

Now, domain users will not be able to save executable files in the share named \\SRV1\Data. They will be able to save other files to the share.

NEW QUESTION 5

SIMULATION - (Topic 4)

Task 11

You need to ensure that all DHCP clients that get an IP address from SRV1 will be configured to use DC1 as a DNS server.

- A. Mastered
- B. Not Mastered

Answer: A

Explanation:

One possible solution to ensure that all DHCP clients that get an IP address from SRV1 will be configured to use DC1 as a DNS server is to use the DHCP scope options. DHCP scope options are settings that apply to all DHCP clients that obtain an IP address from a specific scope. You can use the DHCP scope options to specify the DNS server IP address, as well as other parameters such as the default gateway, the domain name, and the DNS suffix. Here are the steps to configure the DHCP scope options on SRV1:

? On SRV1, open DNS Manager from the Administrative Tools menu or by typing dnsmgmt.msc in the Run box.

? In the left pane, expand your DHCP server and click on IPv4.

? In the right pane, right-click on the scope that you want to configure and select Properties.

? In the Scope Properties dialog box, click on the DNS tab.

? Check the box Enable DNS dynamic updates according to the settings below. This option allows the DHCP server to register and update the DNS records for the DHCP clients.

? Select the option Always dynamically update DNS records. This option ensures that the DHCP server updates both the A and PTR records for the DHCP clients,

regardless of whether they request or support dynamic updates.

? Check the box Discard A and PTR records when lease is deleted. This option

allows the DHCP server to delete the DNS records for the DHCP clients when their leases expire or are released.

? Check the box Dynamically update DNS records for DHCP clients that do not

request updates. This option allows the DHCP server to update the DNS records for the DHCP clients that do not support dynamic updates, such as legacy or non-Windows clients.

? In the DNS servers section, click on the Add button to add a new DNS server IP address.

? In the Add Server dialog box, enter the IP address of DC1, which is the DNS server that you want to use for the DHCP clients, and click Add.

? Click OK to close the Add Server dialog box and return to the Scope Properties dialog box.

? Click OK to apply the changes and close the Scope Properties dialog box.

Now, all DHCP clients that get an IP address from SRV1 will be configured to use DC1 as a DNS server. You can verify the DNS configuration by using the ipconfig /all command on a DHCP client computer and checking the DNS Servers entry. You can also check the DNS records for the DHCP clients by using the DNS Manager console on DC1.

NEW QUESTION 6

SIMULATION - (Topic 4)

Task 8

You need to create an Active Directory Domain Services (AD DS) site named Site2 that is associated to an IP address range of 192.168.2.0 to 192.168.2.255.

A. Mastered

B. Not Mastered

Answer: A

Explanation:

To create an AD DS site named Site2 that is associated to an IP address range of 192.168.2.0 to 192.168.2.255, you can follow these steps:

? On a domain controller or a computer that has the Remote Server Administration

Tools (RSAT) installed, open Active Directory Sites and Services from the Administrative Tools menu or by typing dssite.msc in the Run box.

? In the left pane, right-click on Sites and select New Site.

? In the New Object - Site dialog box, enter Site2 as the Name of the new site.

Select a site link to associate the new site with, such as DEFAULTIPSITELINK, and click OK. You can also create a new site link if you want to customize the replication frequency and schedule between the sites. For more information on how to create a site link, see Create a Site Link.

? In the left pane, right-click on Subnets and select New Subnet.

? In the New Object - Subnet dialog box, enter 192.168.2.0/24 as the Prefix of the subnet. This notation represents the IP address range of 192.168.2.0 to 192.168.2.255 with a subnet mask of 255.255.255.0. Select Site2 as the Site object to associate the subnet with, and click OK.

? Wait for the changes to replicate to other domain controllers. You can verify the

site and subnet creation by checking the Sites and Subnets containers in Active Directory Sites and Services.

Now, you have created an AD DS site named Site2 that is associated to an IP address range of 192.168.2.0 to 192.168.2.255. You can add domain controllers to the new site and configure the site links and site link bridges to optimize the replication topology.

NEW QUESTION 7

- (Topic 3)

Note: This question is part of a series of questions that present the same scenario. Each question in the series contains a unique solution that might meet the stated goals. Some question sets might have more than one correct solution, while others might not have a correct solution.

After you answer a question in this section, you will NOT be able to return to it. As a result, these questions will not appear in the review screen.

Your network contains an Active Directory Domain Services (AD DS) domain named contoso.com.

You need to identify which server is the PDC emulator for the domain.

Solution: From Active Directory Domains and Trusts, you right-click Active Directory Domains and Trusts in the console tree, and then select Operations Master.

Does this meet the goal?

A. Yes

B. No

Answer: B

NEW QUESTION 8

HOTSPOT - (Topic 3)

Your network contains an Active Directory Domain Services (AD DS) forest named contoso.com. The forest contains a child domain named east.contoso.com and the servers shown in the following table.

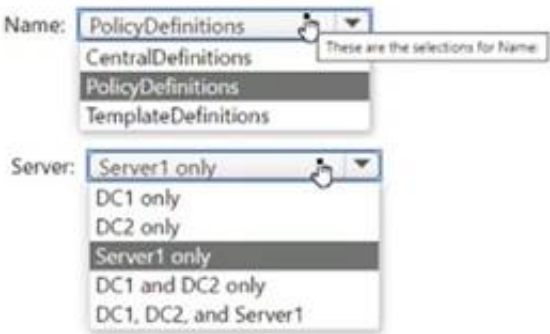
Name	Domain	Description
DC1	contoso.com	Has the schema master, infrastructure master, and domain naming master roles
DC2	east.contoso.com	Has the PDC emulator and RID master roles and is a global catalog server
Server1	contoso.com	Has the File Server, DFS Namespaces, and DFS Replication server roles

You need to create a folder for the Central Store to manage Group Policy template files for the entire forest.

What should you name the folder, and on which server should you create the folder? To answer, select the appropriate options in the answer area.

NOTE: Each correct selection is worth one point.

Answer Area

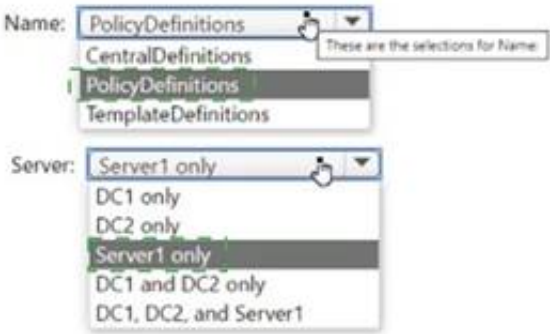


- A. Mastered
- B. Not Mastered

Answer: A

Explanation:

Answer Area



NEW QUESTION 9

- (Topic 3)

You have an Azure subscription that contains a virtual machine named VM1 as shown in the following exhibit.



The subscription has the disks shown in the following table.

Name	Resource group	Location	Availability zone
Disk1	RG1	East US	None
Disk2	RG2	East US	1
Disk3	RG1	Central US	None
Disk4	RG1	Central US	1

Which disks can you attach as data disks to VM1?

- A. Disk2 only
- B. Disk4 only
- C. Disk1 and Disk2 only
- D. Disk2 and Disk4 only
- E. Disk1, Disk3, and Disk4 only
- F. Disk1, Disk2, Disk3. and Disk4

Answer: C

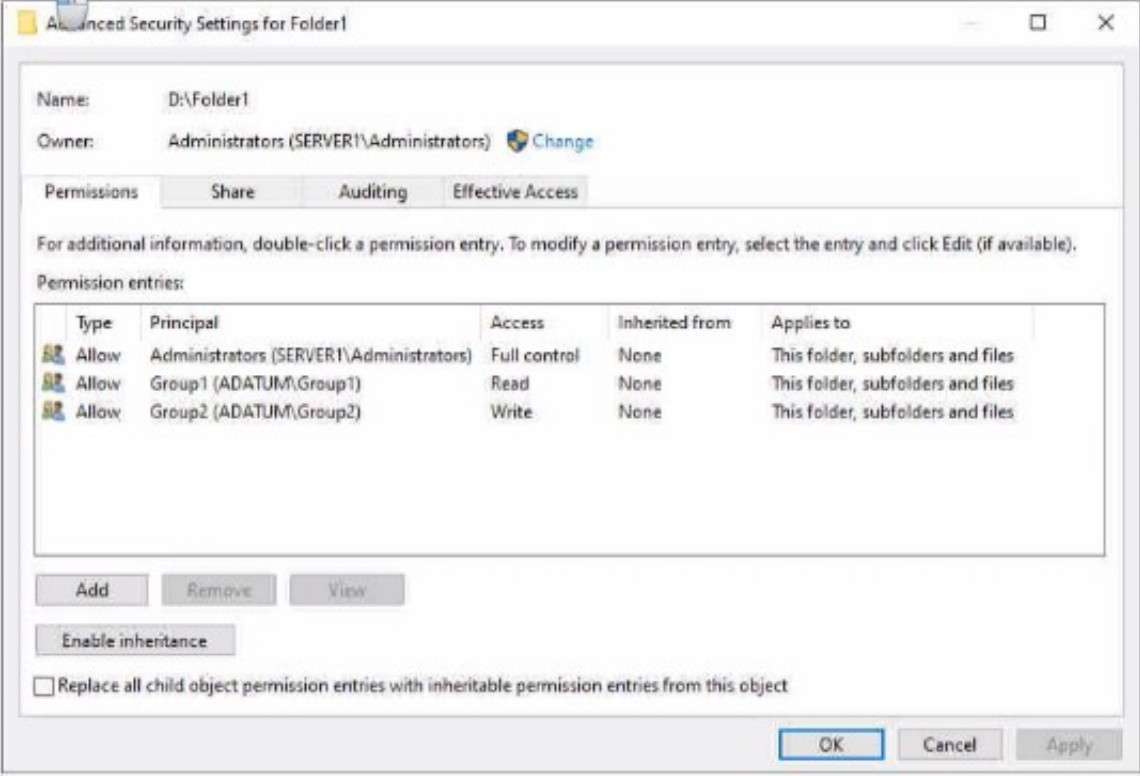
NEW QUESTION 10

HOTSPOT - (Topic 3)

Your network contains an Active Directory Domain Services (AD DS) domain named adatum.com The domain contains a server named Server1 and the users shown in the following table.

Name	Member of
User1	Group1
User2	Group2
User3	Group3

Server1 contains a folder named D:\Folder1. The advanced security settings for Folder 1 are configured as shown in the Permissions exhibit. (Click the Permissions tab.)



Folder1 is shared by using the following configurations

Group	Permission
Group1	Allow - Change
Group3	Allow - Full Control

Path : D:\Folder1
Name : Share1
ShareType : FileSystemDirectory
FolderEnumerationMode : Unrestricted

Answer Area

Statements	Yes	No
User1 can read the files in Share1.	<input type="radio"/>	<input type="radio"/>
User3 can delete files in Share1.	<input type="radio"/>	<input type="radio"/>
If User2 connects to \\Server1.adatum.com from File Explorer,	<input type="radio"/>	<input type="radio"/>

- A. Mastered
- B. Not Mastered

Answer: A

Explanation:

Answer Area

Statements	Yes	No
User1 can read the files in Share1.	<input checked="" type="radio"/>	<input type="radio"/>
User3 can delete files in Share1.	<input checked="" type="radio"/>	<input type="radio"/>
If User2 connects to \\Server1.adatum.com from File Explorer,	<input type="radio"/>	<input checked="" type="radio"/>

NEW QUESTION 10

HOTSPOT - (Topic 3)

Your on-premises network contains an Active Directory Domain Services (AD DS) domain.

The domain contains the servers shown in the following table.

The domain controllers do NOT have internet connectivity.

You plan to implement Azure AD Password Protection for the domain.

You need to deploy Azure AD Password Protection agents. The solution must meet the following requirements:

- All Azure AD Password Protection policies must be enforced.
- Agent updates must be applied automatically.
- Administrative effort must be minimized.

What should you do? To answer select the appropriate options in the answer area. NOTE: Each correct selection is worth one point.

Answer Area

Install the Azure AD Password Protection agent on: DC1 and DC2 only

Install the Azure AD Password Protection Proxy on: Server1

- A. Mastered
B. Not Mastered

Answer: A

Explanation:

Answer Area

Install the Azure AD Password Protection agent on: DC1 and DC2 only

Install the Azure AD Password Protection Proxy on: Server1

NEW QUESTION 13

HOTSPOT - (Topic 3)

You have a Windows Server container host named Server1.

You start the containers on Server1 as shown in the following table.

Name	Image	Uses Hyper-V isolation	Process running on container
Container1	microsoft/iis	No	ProcessA
Container2	microsoft/iis	No	ProcessB
Container3	microsoft/iis	Yes	ProcessC
Container4	microsoft/iis	Yes	ProcessD

You need to validate the status of ProcessA and ProcessC.

Where can you verify that ProcessA and ProcessC are in a running state? To answer, select the appropriate options in the answer area.

NOTE: Each correct selection is worth one point.

Answer Area

ProcessA: All the containers and Server1

ProcessC: Container3 and Server1 only

- A. Mastered
B. Not Mastered

Answer: A

Explanation:

Answer Area

ProcessA: All the containers and Server1

ProcessC: Container3 and Server1 only

NEW QUESTION 16

- (Topic 3)

Your network contains an Active Directory Domain Services (AD DS) domain named contoso.com. The domain contains two servers named Server1 and Server2. Server1 contains a disk named Disk2. Disk2 contains a folder named UserData. UserData is shared to the Domain Users group. Disk2 is configured for deduplication. Server1 is protected by using Azure Backup.

Server1 fails.

You connect Disk2 to Server2.

You need to ensure that you can access all the files on Disk2 as quickly as possible. What should you do?

- A. Create a storage pool.

- B. Restore files from Azure Backup.
- C. Install the File Server Resource Manager server role.
- D. Install the Data Deduplication server role.

Answer: C

Explanation:

Reference:

<https://docs.microsoft.com/en-us/windows-server/storage/data-deduplication/overview>

NEW QUESTION 18

- (Topic 3)

You have a server that runs Windows Server and contains a shared folder named UserData.

You need to limit the amount of storage space that each user can consume in UserData. What should you use?

- A. Storage Spaces
- B. Work Folders
- C. Distributed File System (DFS) Namespaces
- D. File Server Resource Manager (FSRM)

Answer: D

Explanation:

Reference:

<https://docs.microsoft.com/en-us/windows-server/storage/fsrm/fsrm-overview>

NEW QUESTION 20

- (Topic 3)

You have an Active Directory Domain Services (AD DS) domain. The domain contains three servers named Server 1, Server2, and Server3 that run Windows Server.

You sign in to Server1 by using a domain account and start a remote PowerShell session to Server2. From the remote PowerShell session, you attempt to access a resource on Server3. but access to the resource is denied.

You need to ensure that your credentials are passed from Server1 to Server3. The solution must minimize administrative effort. What should you do?

- A. Configure Kerberos constrained delegation.
- B. Configure Just Enough Administration (JEA).
- C. Configure selective authentication for the domain.
- D. Disable the Enforce user logon restrictions policy setting for the domain.

Answer: A

NEW QUESTION 25

- (Topic 3)

Your network contains an Active Directory Domain Services (AD DS) domain- The domain contains 10 servers that run Windows Server. The servers have static IP addresses.

You plan to use DHCP to assign IP addresses to the servers.

You need to ensure that each server always receives the same IP address.

Which type of identifier should you use to create a DHCP reservation for each server?

- A. universally unique identifier (UUID)
- B. fully qualified domain name (FQDN)
- C. NetBIOS name
- D. MAC address

Answer: D

Explanation:

Reference:

<https://docs.microsoft.com/en-us/powershell/module/dhcpserver/add-dhcpserverv4reservation?view=windowsserver2022-ps>

NEW QUESTION 26

HOTSPOT - (Topic 3)

Your on-premises network contains a server named Server1 and uses an IP address space of 192.168.10.0/24.

You have an Azure virtual network that contains a subnet named Subnet1. Subnet1 uses an IP address space of 192.168.10.0/24.

You need to migrate Server1 to Subnet1. You must use Azure Extended Network to maintain the existing IP address of Server1.

What is the minimum number of virtual machines that you should deploy? To answer, select the appropriate options in the answer area.

NOTE: Each correct selection is worth one point

Answer Area

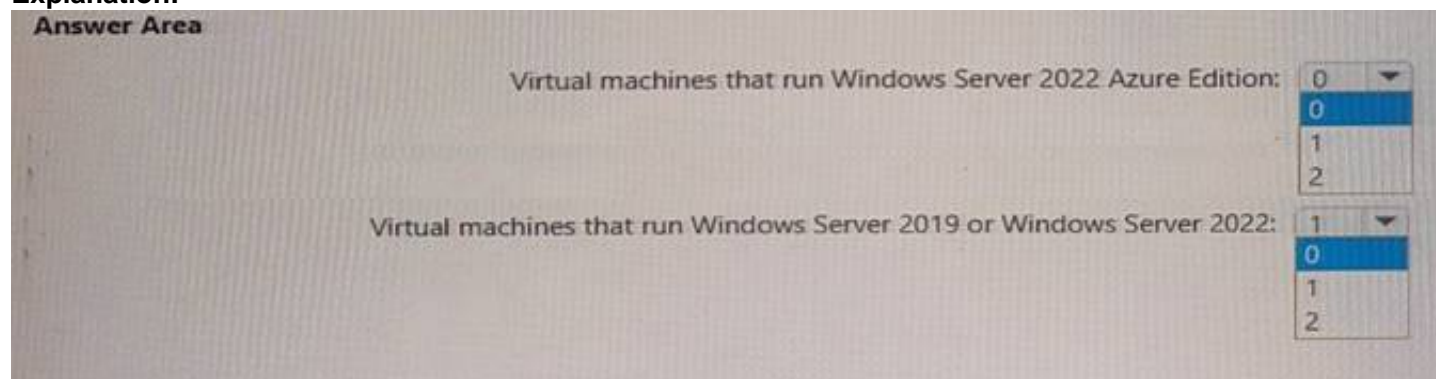
Virtual machines that run Windows Server 2022 Azure Edition:

Virtual machines that run Windows Server 2019 or Windows Server 2022:

- A. Mastered
- B. Not Mastered

Answer: A

Explanation:



NEW QUESTION 29

- (Topic 3)

You have an Azure virtual machine named VM1 that runs Windows Server and has the following configurations:

- ? Size: D2s_v4
- ? Operating system disk: 127-GiB standard SSD
- ? Data disk 128-GiB standard SSD
- ? Virtual machine generation: Gen 2

You plan to perform the following changes to VM1:

- ? Change the virtual machine size to D4s_v4.
- ? Detach the data disk.
- ? Add a new standard SSD.

Which changes require downtime for VM1?

- A. Detaching the data disk only and adding a new standard SSD.
- B. Detaching the data disk only.
- C. Changing the virtual machine size only.
- D. Adding a new standard SSD only.

Answer: C

Explanation:

Data disks can be added and detached without requiring downtime. Changing the VM size requires the VM to be restarted.

NEW QUESTION 31

- (Topic 3)

You have a Windows Server container host named Server 1 and a container image named Image1.

You need to start a container from image1. The solution must run the container on a Hyper- V virtual machine.

Which parameter should you specify when you run the docker run command?

- A. --expose
- B. --privileged
- C. --runtime
- D. --entrypoint
- E. --isolation

Answer: D

Explanation:

Reference:

<https://docs.microsoft.com/en-us/virtualization/windowscontainers/manage-containers/hyperv-container>

NEW QUESTION 34

- (Topic 3)

Your network contains an on-premises Active Directory Domain Services (AD DS) domain named contoso.com. The domain contains three servers that run Windows Server and have the Hyper-V server role installed. Each server has a Switch Embedded Teaming (SET) team.

You need to verify that Remote Direct Memory Access (RDMA) and required Windows Server settings are configured properly on each server to support a failover cluster.

What should you use?

- A. the validate-DCB cmdlet
- B. Server Manager
- C. the Get-NetAdapter cmdlet
- D. Failover Cluster Manager

Answer: A

NEW QUESTION 37

- (Topic 3)

Your network contains a DHCP server.

You plan to add a new subnet and deploy Windows Server to the subnet. You need to use the server as a DHCP relay agent.

Which role should you install on the server?

- A. Network Policy and Access Services
- B. Remote Access
- C. Network Controller
- D. DHCP Server

Answer: B

NEW QUESTION 42

- (Topic 3)

You have an Azure virtual machine named VM1 that runs Windows Server. You have an Azure subscription that has Microsoft Defender for Cloud enabled. You need to ensure that you can use the Azure Policy guest configuration feature to manage VM1. What should you do?

- A. Add the PowerShell Desired State Configuration (DSC) extension to VM1.
- B. Configure VM1 to use a user-assigned managed identity.
- C. Configure VM1 to use a system-assigned managed identity.
- D. Add the Custom Script Extension to VM1.

Answer: C

Explanation:

Reference:

<https://docs.microsoft.com/en-us/azure/virtual-machines/extensions/guest-configuration>

NEW QUESTION 44

- (Topic 3)

You have an Azure virtual machine named Server1 that runs a network management application. Server1 has the following network configuration.

- * Network interface.Nic1
- * IP address 10.1.1.1/24
- * Connected to: Vnet1/Subnet1

You need connect Server1 to an additional subnet named Vnet1/Subnet2. What should you do?

- A. Create a private endpoint on Subnet2
- B. Add a network interface to server1.
- C. Modify the IP configurations of Nic1.
- D. Add an IP configuration to Nic1.

Answer: B

NEW QUESTION 47

- (Topic 3)

You have an on-premises Active Directory Domain Services (AD DS) domain that syncs with an Azure Active Directory (Azure AD) tenant Group writeback is enabled in Azure AD Connect.

The AD DS domain contains a server named Server1. Server 1 contains a shared folder named share1.

You have an Azure Storage account named storage2 that uses Azure AD-based access control. The storage2 account contains a share named shared.

You need to create a security group that meets the following requirements:

- Can contain users from the AD DS domain
- Can be used to authorize user access to share 1 and share2. What should you do?

- A. in the AD DS domain, create a universal security group
- B. in the Azure AD tenant create a security group that has assigned membership
- C. in the Azure AD Tenant create a security group that has dynamic membership.
- D. in the Azure AD tenant create a Microsoft 365 group

Answer: B

NEW QUESTION 52

- (Topic 3)

You have an Azure subscription. The subscription contains a virtual machine named VM1 that runs Windows Server.

You build an app named App1.

You need to configure continuous integration and continuous deployment (CI/CD) of App1 to VM1.

What should you create first?

- A. a managed identity
- B. an App Service Environment
- C. an Azure Automation account
- D. an Azure DevOps organization

Answer: D

NEW QUESTION 53

DRAG DROP - (Topic 3)

Your network contains two Active Directory Domain Services (AD DS) forests named contoso.com and fabrikam.com. Contoso.com contains three child domains named amer.contoso.com, apac.contoso.com, and emea.contoso.com. Fabrikam.com contains a child domain named apac.fabrikam.com. A bidirectional forest trust exists between contoso.com and fabrikam.com.

You need to provide users in the contoso.com forest with access to the resources in the fabrikam.com forest. The solution must meet the following requirements:

• Users in contoso.com must only be added directly to groups in the contoso.com forest.
• Permissions to access the resources in fabrikam.com must only be granted directly to groups in the fabrikam.com forest.
• The number of groups must be minimized.
Which type of groups should you use to organize the users and to assign permissions? To answer, drag the appropriate group types to the correct requirements. Each group type may be used once, more than once, or not at all. You may need to drag the split bar between panes or scroll to view content.
NOTE: Each correct selection is worth one point.

Group types	Answer Area
Domain global	Organize users: <input type="text"/>
Domain local	Assign permissions: <input type="text"/>
Universal	

- A. Mastered
- B. Not Mastered

Answer: A

Explanation:

Group types	Answer Area
Domain global	Organize users: Domain local
Domain local	Assign permissions: Universal
Universal	

NEW QUESTION 54

- (Topic 3)
You have a server named Host1 that has the Hyper-V server role installed. Host1 hosts a virtual machine named VM1. You have a management server named Server1 that runs Windows Server. You remotely manage Host1 from Server1 by using Hyper-V Manager. You need to ensure that you can access a USB hard drive connected to Server1 when you connect to VM1 by using Virtual Machine Connection. Which two actions should you perform? Each correct answer presents part of the solution. NOTE: Each correct selection is worth one point.

- A. From the Hyper-V Settings of Host1, select Allow enhanced session mode
- B. From Disk Management on Host1, attach a virtual hard disk.
- C. From Virtual Machine Connection, switch to a basic session.
- D. From Virtual Machine Connection select Show Options and then select the USB hard drive.
- E. From Disk Management on Host1, select Rescan Disks

Answer: AD

Explanation:

Reference:
<https://docs.microsoft.com/en-us/windows-server/virtualization/hyper-v/learn-more/use-local-resources-on-hyper-v-virtual-machine-with-vmconnect>

NEW QUESTION 56

DRAG DROP - (Topic 3)
You have a server named Server1 that runs Windows Server and has the Hyper V server role installed. Server1 hosts a virtual machine named VM1. Server1 has an NVMe storage device. The device is currently assigned to VM1 by using Discrete Device Assignment. You need to make the device available to Server1. Which four actions should you perform in sequence? To answer, move the appropriate actions from the list of actions to the answer area and arrange them in the correct order.

Actions	Answer Area
From Server1, stop VM1.	
From Server1, run the Remove-VMAssignableDevice cmdlet.	
From Server1, run the Mount-VMHostAssignableDevice cmdlet.	
From Server1, enable the device by using Device Manager.	
From VM1, disable the device by using Device Manager.	

- A. Mastered
- B. Not Mastered

Answer: A

Explanation:

Actions

From Server1, stop VM1.

From Server1, run the Remove-VMAssignableDevice cmdlet.

From Server1, run the Mount-VMHostAssignableDevice cmdlet.

From Server1, enable the device by using Device Manager.

From VM1, disable the device by using Device Manager.

Answer Area

From Server1, stop VM1.

From Server1, run the Remove-VMAssignableDevice cmdlet.

From Server1, run the Mount-VMHostAssignableDevice cmdlet.

From Server1, enable the device by using Device Manager.

NEW QUESTION 58

HOTSPOT - (Topic 3)

Your network contains an Active Directory Domain Services (AD DS) domain. The domain contains the domain controllers shown in the following table.

Name	Description
DC1	Has the schema master, infrastructure master, and domain naming master roles
DC2	Has the PDC emulator and RID master roles and is a global catalog server
DC3	None

You need to configure DC3 to be the authoritative time server for the domain.

Which operations master role should you transfer to DC3, and which console should you use? To answer, select the appropriate options in the answer area.

NOTE: Each correct selection is worth one point.

Answer Area

Role: PDC emulator

Domain naming master

Infrastructure master

PDC emulator

RID master

Schema master

Console: Active Directory Users and Computers

Active Directory Admin

Active Directory Doma

Active Directory Sites (and Services)

Active Directory Users and Computers

- A. Mastered
- B. Not Mastered

Answer: A

Explanation:

Answer Area

Role: PDC emulator

Domain naming master

Infrastructure master

PDC emulator

RID master

Schema master

Console: Active Directory Users and Computers

Active Directory Admin

Active Directory Doma

Active Directory Sites (and Services)

Active Directory Users and Computers

NEW QUESTION 59

- (Topic 3)

You have an on-premises server named Server1 that runs Windows Server. Server1 contains an app named App1 and a firewall named Firewall1.

You have an Azure subscription.

Internal users connect to App1 by using WebSockets.

You need to make App1 available to users on the internet. The solution must minimize the number of inbound ports open on Firewall 1.

What should you include in the solution?

- A. Microsoft Application Request Routing (ARR) Version 2
- B. Web Application Proxy
- C. Azure Relay
- D. Azure Application Gateway

Answer: C

NEW QUESTION 64

- (Topic 3)

You have an Azure virtual machine named VM1 that runs Windows Server. You perform the following actions on VM1:

- Create a folder named Folder1 on volume C
- Create a folder named Folder2 on volume D.
- Add a new data disk to VM1 and create a new volume that is assigned drive letter E.
- Install an app named App1 on volume E. You plan to resize VM1.

Which objects will present after you resize VM1?

- A. Folded and Folder2 only
- B. Folder1, volume E, and App1 only
- C. Folder1 only
- D. Folde
- E. Folder2. App1, and volume E

Answer: D

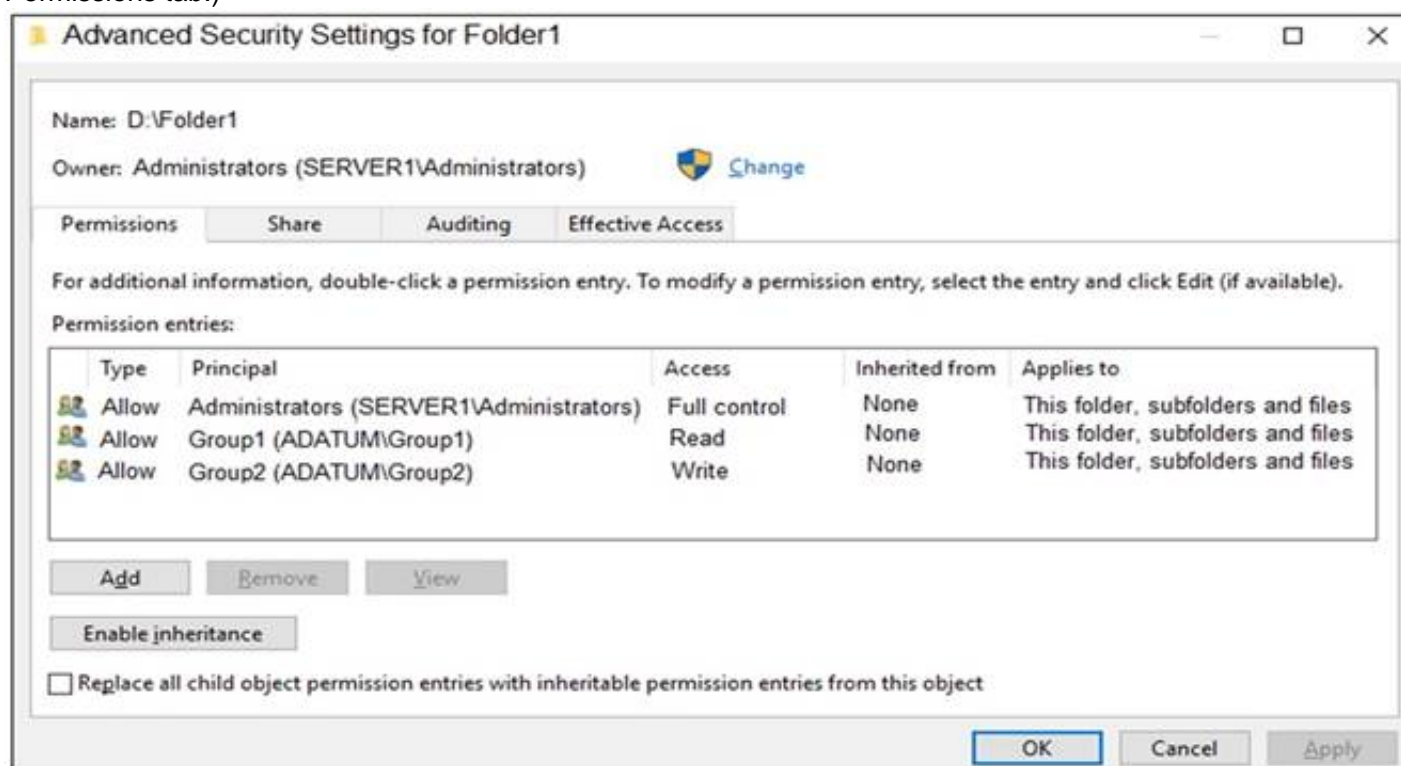
NEW QUESTION 66

HOTSPOT - (Topic 3)

Your network contains an Active Directory Domain Services (AD DS) domain named adatum.com. The domain contains a server named Server1 and the users shown in the following table.

Name	Member of
User1	Group1
User2	Group2
User3	Group3

Server1 contains a folder named D:\Folder1. The advanced security settings for Folder1 are configured as shown in the Permissions exhibit. (Click the Permissions tab.)



Folder1 is shared by using the following configurations:

```
Path           : D:\Folder1
Name           : Share1
ShareType      : FileSystemDirectory
FolderEnumerationMode : Unrestricted
```

The share permissions for Share1 are shown in the following table.

Group	Permission
Group1	Allow – Change
Group3	Allow – Full Control

For each of the following statements, select Yes if the statement is true. Otherwise, select No.
NOTE: Each correct selection is worth one point.

Statements	Yes	No
User1 can read the files in Share1.	<input type="radio"/>	<input type="radio"/>
User3 can delete files in Share1.	<input type="radio"/>	<input type="radio"/>
If User2 connects to \\Server1.adatum.com from File Explorer, Share1 will be listed.	<input type="radio"/>	<input type="radio"/>

- A. Mastered
- B. Not Mastered

Answer: A

Explanation:

To access files in a shared folder, you need to be granted permissions on the folder (NTFS permissions) AND permissions on the share. The most restrictive permission of the folder permissions and share permissions apply.

Box 1: Yes

Group1 has Read access to Folder1 and Change access to Share1. Therefore, User1 can read the files in Share1.

Box 2: No

Group3 has Full Control access to Share1. However, Group3 has no permissions configured Folder1. Therefore, User3 cannot access the files in Share1.

Box 3: Yes

Group2 has write permission to Folder1. However, Group2 has no permission on Share1. Therefore, users in Group2 cannot access files in the shared folder.

Access Based Enumeration when enabled hides files and folders that users do not have permission to access. However, Access Based Enumeration is not enabled on Share1.

This is indicated by the FolderEnumerationMode – Unrestricted setting. Therefore, the share will be visible to User2 even though User2 cannot access the shared folder.

NEW QUESTION 71

DRAG DROP - (Topic 3)

You have a disaggregated cluster deployment. The deployment contains a scale-out file server (SOFS) cluster that runs Windows Server and a compute duster that has the Hyper- V role enabled.

You need to implement Storage Quality of Service (QoS). The solution must ensure that you can control the bandwidth usage between the SOFS cluster and the Hyper-V cluster.

Which cmdlet should you run on each cluster? To answer, drag the appropriate cmdlets to the correct clusters. Each cmdlet may be used once, more than once, or not at all. You may need to drag the split bar between panes or scroll to view content.

NOTE: Each correct selection is worth one point.

Cmdlets

New-StorageQosPolicy

Set-VPHardDiskDrive

Set-VHSan

Answer Area

SOFS:

Hyper-V:

- A. Mastered
- B. Not Mastered

Answer: A

Explanation:

Cmdlets

New-StorageQosPolicy

Set-VPHardDiskDrive

Set-VHSan

Answer Area

SOFS:

New-StorageQosPolicy

Hyper-V:

Set-VPHardDiskDrive

NEW QUESTION 74

HOTSPOT - (Topic 3)

Your Partner of IT Exam

visit - <https://www.exambible.com>

You have a server named Server1 that has the Hyper-V server role installed. Server1 hosts the virtual machines shown in the following exhibit.

Hyper-V Manager				
File Action View Help				
Virtual Machines				
Name	Configuration Version	State	CPU Usage	Uptime
VM1	10.0	Running	2%	03:09:45
VM2	9.0	Running	2%	03:07:02
VM3	8.0	Running	2%	03:06:02

Use the drop-down menus to select the answer choice that completes each statement based on the information presented in the graphic.
NOTE: Each correct selection is worth one point.

Answer Area

[Answer choice] can have production checkpoints.

Only VM1
Only VM1
Only VM1 and VM2
VM1, VM2, and VM3

[Answer choice] can be hibernated.

VM1, VM2, and VM3
Only VM1
Only VM1 and VM2
VM1, VM2, and VM3

- A. Mastered
- B. Not Mastered

Answer: A

Explanation:

Answer Area

[Answer choice] can have production checkpoints.

Only VM1
Only VM1
Only VM1 and VM2
VM1, VM2, and VM3

[Answer choice] can be hibernated.

VM1, VM2, and VM3
Only VM1
Only VM1 and VM2
VM1, VM2, and VM3

NEW QUESTION 75

HOTSPOT - (Topic 3)

Your network contains an Active Directory Domain Services (AD DS) domain named contoso.com.
The network contains the servers shown in the following table.

Name	Role	Domain/workgroup	Operating system
DC1	Active Directory Domain Services, DNS Server	contoso.com	Windows Server
Server1	DHCP Server	contoso.com	Windows Server
Server2	None	contoso.com	Windows Server Core
Server3	None	Workgroup1	Windows Server Core

You plan to implement IP Address Management (IPAM).
You need to use the Group Policy based provisioning method for managed servers. The solution must support server discovery.
What should you do? To answer, select the appropriate options in the answer area. NOTE: Each correct selection is worth one point.

Answer Area

Server on which to deploy the IPAM server role:

Server2
DC1
Server1
Server2
Server3

Servers that must be provisioned for IPAM:

DC1 and Server1
DC1 and Server1
DC1 and Server3
Server1 and Server2
Server2 and Server3

- A. Mastered
- B. Not Mastered

Answer: A

Explanation:

Answer Area

Server on which to deploy the IPAM server role: Server2

Servers that must be provisioned for IPAM: DC1 and Server1

NEW QUESTION 77

HOTSPOT - (Topic 3)

Your on-premises network contains a single-domain Active Directory Domain Services (AD DS) forest. You have an Azure AD tenant named contoso.com. The AD DS forest syncs with the Azure AD tenant by using Azure AD Connect.

You need to ensure that users in the forest that have a custom attribute of NoSync are excluded from synchronization.

How should you configure the Azure AD Connect cloudFiltered attribute, and which tool should you use? To answer, select the appropriate options in the answer area.

NOTE: Each correct selection is worth one point.

Answer Area

Attribute: True

Tool: Synchronization Rules Editor

Answer:

Answer Area

Attribute: True

Tool: Synchronization Rules Editor

- A. Mastered
- B. Not Mastered

Answer: A

NEW QUESTION 81

- (Topic 3)

Your network contains an Active Directory Domain Services (AD DS) domain.

You have a Group Policy Object (GPO) named GPO1 that contains Group Policy preferences.

You plan to link GPO1 to the domain.

You need to ensure that the preference in GPO1 apply only to domain member servers and NOT to domain controllers or client computers. All the other Group Policy settings in GPO1 must apply to all the computers. The solution must minimize administrative effort.

Which type of item level targeting should you use?

- A. Domain
- B. Operating System
- C. Security Group
- D. Environment Variable

Answer: B

Explanation:

Reference:

[https://docs.microsoft.com/en-us/previous-versions/windows/it-pro/windows-server-2012-r2-and-2012/dn789189\(v=ws.11\)#operating-system-targeting](https://docs.microsoft.com/en-us/previous-versions/windows/it-pro/windows-server-2012-r2-and-2012/dn789189(v=ws.11)#operating-system-targeting)

NEW QUESTION 86

DRAG DROP - (Topic 3)

You deploy a single-domain Active Directory Domain Services (AD DS) forest named contoso.com.

You deploy a server to the domain and configure the server to run a service.

You need to ensure that the service can use a group managed service account (gMSA) to authenticate.

Which three PowerShell cmdlets should you run in sequence? To answer, move the appropriate cmdlets from the list of cmdlets to the answer area and arrange them in the correct order.

Cmdlets

Add-ADComputerServiceAccount

Set-KdsConfiguration

Add-ADGroupMember

Add-KdsRootKey

New-ADServiceAccount

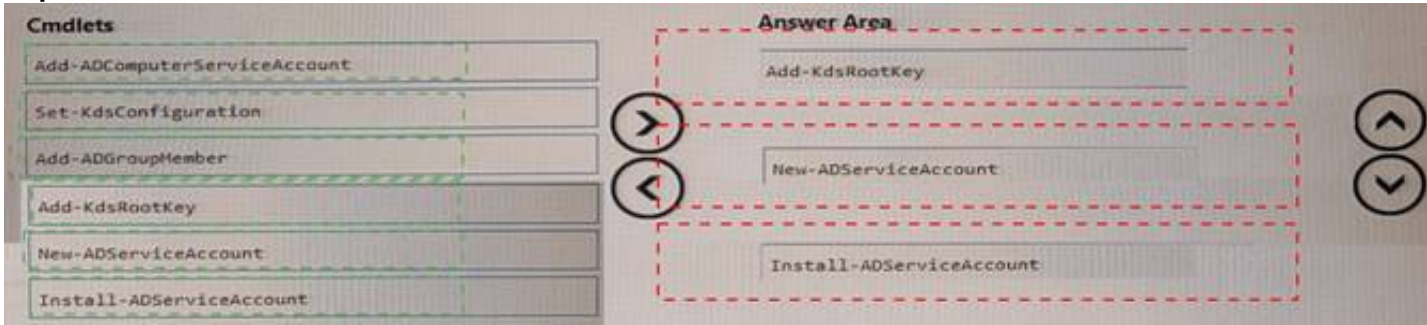
Install-ADServiceAccount

Answer Area

- A. Mastered
- B. Not Mastered

Answer: A

Explanation:



NEW QUESTION 87

HOTSPOT - (Topic 3)

You have an Active Directory Domain Services (AD DS) domain that contains the member servers shown in the following table.

Name	Operating system	Data Deduplication role service
Server1	Windows Server 2019	Installed
Server2	Windows Server 2022	Not installed
Server3	Windows Server 2022	Installed

Server3 contains a data disk named Disk1 that has Data Deduplication installed. Disk1 contains the files shown in the following table.

Name	Size
File1.txt	5 KB
File2.docx	800 KB
File3.sys	2 MB
File4.bmp	5 GB

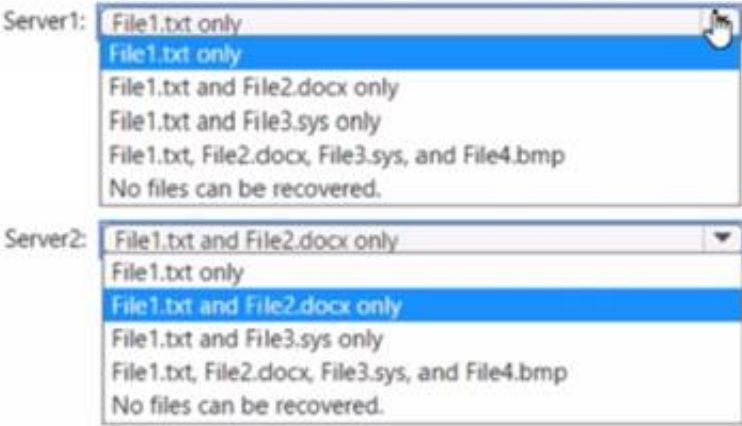
Server3 fails.

You need to recover the files on Disk1.

Which files can you recover if you attach Disk1 to Server 1, and which files can you recover if you attach Disk1 to Server2? To answer, select the appropriate options in the answer area.

NOTE: Each correct selection is worth one point.

Answer Area

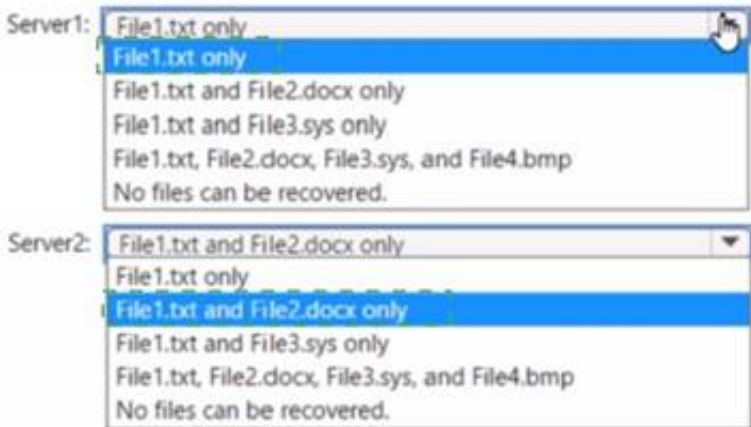


- A. Mastered
- B. Not Mastered

Answer: A

Explanation:

Answer Area



NEW QUESTION 89

- (Topic 3)

You have an on premises Active Directory Domain Services (AD DS) domain that syncs with an Azure Active Directory (Azure AD) tenant.

You plan to implement self-service password reset (SSPR) in Azure AD.

You need to ensure that users that reset their passwords by using SSPR can use the new password resources in the AD DS domain.

What should you do?

- A. Deploy the Azure AD Password Protection proxy service to the on premises network.
- B. Run the Microsoft Azure Active Directory Connect wizard and select Password writeback.
- C. Grant the Change password permission for the domain to the Azure AD Connect service account.
- D. Grant the impersonate a client after authentication user right to the Azure AD Connect service account.

Answer: B

Explanation:

Reference:

<https://docs.microsoft.com/en-us/azure/active-directory/authentication/tutorial-enable-sspr- writeback>

NEW QUESTION 93

HOTSPOT - (Topic 3)

You need to sync files from an on-premises server named Server1 to Azure by using Azure File Sync

You have a cloud tiering policy that is configured for 30 percent free space and 70 days. Volume f on Server1 is 500 GB.

A year ago, you configured E:\Oata on Server1 to sync by using Azure File Sync. The files that are visible in E:\Data are shown in the following table.

Name	Size	Last accessed
File1	200 GB	2 days ago
File2	100 GB	10 days ago
File3	200 GB	60 days ago
File4	50 GB	100 days ago

Volume E does NOT contain any other files.

Where are File1 and flle3 located? To answer, select the appropriate options In the answer area.

Answer Area

File1: ☐ Server1 only
☐ The Azure file share only
☐ Server1 and the Azure file share

File3: ☐ Server1 only
☐ The Azure file share only
☐ Server 1 and the Azure file share

- A. Mastered
- B. Not Mastered

Answer: A

Explanation:

Answer Area

File1: ☒ Server1 only
☒ The Azure file share only
☐ Server1 and the Azure file share

File3: ☐ Server1 only
☒ The Azure file share only
☒ Server 1 and the Azure file share

NEW QUESTION 97

- (Topic 3)

You have two servers that have the Hyper-V server role installed. The servers are joined to a failover cluster both servers can connect to the same disk on an iSCSi storage device. You plan to use the iSCSI storage to store highly available Hyper-V virtual machines that will support live migration functionality. You need to configure a storage resource in the failover cluster to store the virtual machines.

What should you configure?

- A. a storage pool
- B. attributed File System (DFS) Replication
- C. a mirrored volume
- D. Cluster Shared volumes (CSV)

Answer: D

NEW QUESTION 99

HOTSPOT - (Topic 3)

Your network contains two VLANs for client computers and one VLAN for a datacenter Each VLAN is assigned an IPv4 subnet Currently, all the client computers use static IP addresses.

You plan to deploy a DHCP server to the VLAN in the datacenter.

You need to use the DHCP server to provide IP configurations to all the client computers. What is the minimum number of scopes and DHCP relays you should create? To answer, select the appropriate options in the answer area. NOTE: Each correct selection is worth one point.

Answer Area



- A. Mastered
- B. Not Mastered

Answer: A

Explanation:

Box 1: 3

You need a DHCP scope for each of the three subnets.

Box 2: 2

The two client VLANs need a DHCP Relay Agent to forward DHCP requests to the DHCP server. The datacenter VLAN that contains the DHCP server does not require a DHCP Relay Agent.

NEW QUESTION 104

- (Topic 3)

Your network contains a multi-site Active Directory Domain Services (AD DS) forest. Each Active Directory site is connected by using manually configured site links and automatically generated connections.

You need to minimize the convergence time for changes to Active Directory. What should you do?

- A. For each site link, modify the options attribute.
- B. For each site link, modify the site link costs.
- C. For each site link, modify the replication schedule.
- D. Create a site link bridge that contains all the site links.

Answer: C

Explanation:

Reference:

<https://docs.microsoft.com/en-us/windows-server/identity/ad-ds/plan/determining-the-interval>

NEW QUESTION 107

- (Topic 3)

Your network contains an Active Directory Domain Services (AD DS) forest named contoso.com. The root domain contains the domain controllers shown in the following table.

Name	FSMO role
DC1	Domain naming master
DC2	RID master
DC3	PDC emulator
DC4	Schema master
DC5	Infrastructure master

A failure of which domain controller will prevent you from creating application partitions?

- A. DC1
- B. DC2
- C. DC3
- D. DC4
- E. DC5

Answer: A

Explanation:

Reference:

<https://docs.microsoft.com/en-us/troubleshoot/windows-server/identity/fsmo-roles>

NEW QUESTION 109

- (Topic 3)

You have an on-premises Active Directory Domain Services (AD DS) domain that syncs with an Azure Active Directory (Azure AD) tenant. You have several Windows 10 devices that are Azure AD hybrid-joined. You need to ensure that when users sign in to the devices, they can use Windows Hello for Business. Which optional feature should you select in Azure AD Connect?

- A. Device writeback
- B. Group writeback
- C. Password writeback
- D. Directory extension attribute sync
- E. Azure AD app and attribute filtering

Answer: C

Explanation:

Reference:

<https://docs.microsoft.com/en-us/windows/security/identity-protection/hello-for-business/hello-hybrid-cert-trust-prereqs>

NEW QUESTION 113

- (Topic 3)

Your on-premises network contains an Active Directory domain named contoso.com. You have an Azure AD tenant. You plan to sync contoso.com with the Azure AD tenant by using Azure AD Connect cloud sync. You need to create an account that will be used by Azure AD Connect cloud sync. Which type of account should you create?

- A. system-assigned managed identity
- B. group managed service account (gMSA)
- C. user
- D. InetOrgPerson

Answer: C

NEW QUESTION 115

- (Topic 3)

Note: This question is part of a series of questions that present the same scenario. Each question in the series contains a unique solution that might meet the stated goals. Some

question sets might have more than one correct solution, while others might not have a correct solution.

After you answer a question in this section, you will NOT be able to return to it. As a result, these questions will not appear in the review screen.

You are planning the deployment of DNS to a new network.

You have three internal DNS servers as shown in the following table.

Name	Location	IP address	Local DNS zone
Server1	Montreal	10.0.1.10	contoso.local
Server2	Toronto	10.0.2.10	east.contoso.local
Server3	Seattle	10.0.3.10	west.contoso.local

The contoso.local zone contains zone delegations for east.contoso.local and west.contoso.local. All the DNS servers use root hints.

You need to ensure that all the DNS servers can resolve the names of all the internal namespaces and internet hosts.

Solution: On Server2, you create a conditional forwarder for west.contoso.local. On Server3, you create a conditional forwarder for east.contoso.local.

Does this meet the goal?

- A. Yes
- B. No

Answer: B

NEW QUESTION 120

HOTSPOT - (Topic 3)

Your network contains a two-domain on-premises Active Directory Domain Services (AD DS) forest named Contoso.com. The forest contains the domain controllers shown in the following table.

Name	Description	Domain	Active Directory site
DC1	Forest-wide and domain-wide FSMO role holder	contoso.com	Hub
DC2	Domain-wide FSMO role holder	child.contoso.com	Site1
RODC3	Read-only domain controller (RODC)	contoso.com	Site2

You create an Active Directory site named Site3. Site1, Site2 and Site3 each has a dedicated site link to the Hub site.

In Site3, you install a new server named Server1.

You need to promote Server1 to an ROOC in child.contoso.com by using the install from Media (IFM) option. The solution must minimize network traffic.

What should you do? To answer select the appropriate options in the answer area. NOTE: Each correct selection is worth one point.

Answer Area

Server to use to create the IFM source:

Tool to use to create the IFM source:

- A. Mastered
B. Not Mastered

Answer: A

Explanation:

Answer Area

Server to use to create the IFM source:

Tool to use to create the IFM source:

NEW QUESTION 125

- (Topic 3)

Your network contains an Active Directory Domain Services (AD DS) domain. The domain contains the domain controllers shown in the following table.

Name	Description
DC1	PDC emulator, RID master, and global catalog server
DC2	Infrastructure master and domain naming master
DC3	Schema master
RODC1	Read-only domain controller (RODC)

You need to ensure that if an attacker compromises the computer account of RODC1, the attacker cannot view the Employee-Number AD DS attribute. Which partition should you modify?

- A. configuration
B. global catalog
C. domain
D. schema

Answer: D

NEW QUESTION 130

- (Topic 3)

Your network contains an Active Directory forest. The forest contains two domains named contoso.com and east.contoso.com and the servers shown in the following table.

Name	Domain	Configuration
DC1	contoso.com	Domain controller
Server1	contoso.com	Member server
DC2	east.contoso.com	Domain controller
Server2	east.contoso.com	Member server

Contoso.com contains a user named User1.

You add User1 to the built-in Backup Operators group in contoso.com. Which servers can User1 back up?

- A. DC1 only
B. Server1 only
C. DC1 and DC2 only
D. DC1 and Server1 only
E. DC1, DC2, Server1, and Server2

Answer: A

NEW QUESTION 132

- (Topic 3)

Your network contains an Active Directory Domain Services (AD DS) domain named contoso.com.

You need to identify which server is the PDC emulator for the domain.

Solution: From Active Directory Sites and Services, you right-click Default-First-Site-Name in the console tree, and then select Properties.

Does this meet the goal?

A. Yes

B. No

Answer: B

NEW QUESTION 136

HOTSPOT - (Topic 3)

You have a server named Server1 that runs Windows Server and has the Hyper-V server role installed.

You need to limit which Hyper-V module cmdlets helpdesk users can use when administering Server 1 remotely.

You configure Just Enough Administration (JEA) and successfully build the role capabilities and session configuration files.

How should you complete the PowerShell command? To answer, select the appropriate options in the answer area.

NOTE: Each correct selection is worth one point.

Answer Area



A. Mastered

B. Not Mastered

Answer: A

Explanation:

Answer Area



NEW QUESTION 138

- (Topic 3)

Your network contains an Active Directory Domain Services (AD DS) domain.

You plan to use Active Directory Administrative Center to create a new user named User1. Which two attributes are required to create User1? Each correct answer presents part of the solution.

NOTE: Each correct selection is worth one point.

A. Password

B. Profile path

C. User SamAccountName logon

D. Full name

E. First name

F. User UPN logon

Answer: AC

NEW QUESTION 140

- (Topic 3)

You have five file servers that run Windows Server.

You need to block users from uploading video files that have the .mov extension to shared folders on the file servers. All other types of files must be allowed. The solution must minimize administrative effort.

What should you create?

A. a Dynamic Access Control central access policy

B. a file screen

C. a Dynamic Access Control central access rule

D. a data loss prevention (DLP) policy

Answer: B

Explanation:

Reference:

<https://docs.microsoft.com/en-us/windows-server/storage/fsrm/file-screening-management>

NEW QUESTION 145

HOTSPOT - (Topic 3)

You have on-premises servers that run Windows Server as shown in the following table.

Name	Local content
Server1	D:\Folder1\File1.docx
Server2	D:\Data1\File3.docx

You have an Azure file share named share1 that stores two files named File2.docx and File3.docx.

You create an Azure File Sync sync group that includes the following endpoints:

? share

? D:\Folder1 on Server1

? D:\Data1 on Server2

For each of the following statements, select Yes if the statement is true. Otherwise, select No.

NOTE: Each correct selection is worth one point.

Statements	Yes	No
You can create a file named File2.docx in D:\Folder1 on Server1.	<input type="checkbox"/>	<input type="checkbox"/>
You can create a file named File1.docx in D:\Data1 on Server2.	<input type="checkbox"/>	<input type="checkbox"/>
File3.docx will sync to Server1.	<input type="checkbox"/>	<input type="checkbox"/>

- A. Mastered
B. Not Mastered

Answer: A

Explanation:

Statements	Yes	No
You can create a file named File2.docx in D:\Folder1 on Server1.	<input checked="" type="checkbox"/>	<input type="checkbox"/>
You can create a file named File1.docx in D:\Data1 on Server2.	<input checked="" type="checkbox"/>	<input type="checkbox"/>
File3.docx will sync to Server1.	<input type="checkbox"/>	<input checked="" type="checkbox"/>

NEW QUESTION 147

DRAG DROP - (Topic 3)

You deploy a single-domain Active Directory Domain Services (AD DS) forest named contoso.com.

You deploy five servers to the domain. You add the servers to a group named iTFarmHosts.

You plan to configure a Network Load Balancing (NLB) cluster named NLBCluster.contoso.com that will contain the five servers.

You need to ensure that the NLB service on the nodes of the cluster can use a group managed service account (gMSA) to authenticate.

Which three PowerShell cmdlets should you run in sequence? To answer, move the appropriate cmdlets from the list of cmdlets to the answer area and arrange them in the correct order.

Cmdlets

Add-KdsRootKey

Set-KdsConfiguration

Install-ADServiceAccount

Add-ADGroupMember

New-ADServiceAccount

Add-ADComputerServiceAccount

Answer Area

>

<

- A. Mastered
B. Not Mastered

Answer: A

Explanation:



NEW QUESTION 150

- (Topic 3)

You have a server named Server1 that runs Windows Server. Server1 has the storage pools shown in the following table.

Name	Number of 7,200-RPM HDDs	Number of 10,000-RPM HDDs	Number of SSDs
Pool1	4	4	None
Pool2	None	2	2
Pool3	8	None	4

You plan to create a virtual disk named VDisk1 that will use storage tiers. Which pools can you use to create VDisk1?

- A. Pool2 and Pool3 only
- B. Pool 2only
- C. Pool only
- D. Pool, Pool2, and Pool3
- E. Pool1 and Pool2 only
- F. Pool1 and Pool3 only
- G. Pool3 only

Answer: A

Explanation:

Storage tiering requires both standard HDDs and SSDs. We cannot use Pool1 because it does not have any SSDs.

NEW QUESTION 151

HOTSPOT - (Topic 3)

You have a Windows Server 2022 container host named Host1 and a container registry that contains the container images shown in the following table.

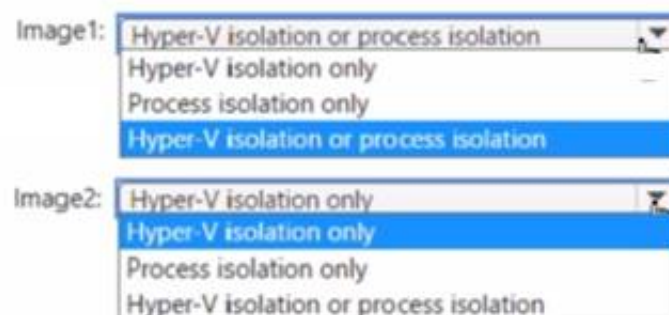
Name	Container base image OS version
Image1	Windows Server 2022
Image2	Windows Server 2019

You need to run the containers on Host1

Which isolation mode can you use for each image? To answer, select the appropriate options in the answer area.

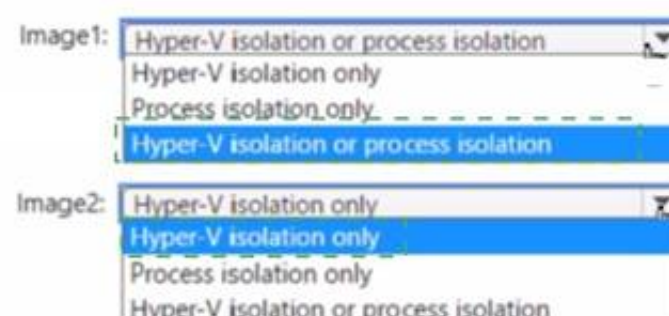
NOTE: Each correct selection is worth one point.

Answer Area



Answer:

Answer Area



A. Mastered

B. Not Mastered

Answer: A

NEW QUESTION 156

HOTSPOT - (Topic 3)

Your network contains an Azure AD Domain Services domain named contoso.com.

You need to configure a password policy for the local user accounts on the Azure virtual machines joined to contoso.com.

What should you do? To answer, select the appropriate options in the answer area. NOTE: Each correct selection is worth one point.

Answer Area

Sign in by using a user account that is a member of the:

AAD DC Administrators group
AAD DC Administrators group
Administrators group
Domain Admins group

Use a Group Policy Object (GPO) linked to the:

AADDC Users organizational unit (OU)
AADDC Computers organizational unit (OU)
AADDC Users organizational unit (OU)
Computers container

Answer:

Answer Area

Sign in by using a user account that is a member of the:

AAD DC Administrators group
AAD DC Administrators group
Administrators group
Domain Admins group

Use a Group Policy Object (GPO) linked to the:

AADDC Users organizational unit (OU)
AADDC Computers organizational unit (OU)
AADDC Users organizational unit (OU)
Computers container

A. Mastered

B. Not Mastered

Answer: A

NEW QUESTION 157

HOTSPOT - (Topic 3)

You have an Azure Active Directory Domain Services (Azure AD DS) domain. You create a new user named Admin1.

You need Admin1 to deploy custom Group Policy settings to all the computers in the domain. The solution must use the principle of least privilege.

What should you include in the solution? To answer, select the appropriate options in the answer area.

NOTE: Each correct selection is worth one point

Add Admin1 to the following group:

AAD DC Administrators
Domain Admins
Group Policy Creator Owners

Instruct Admin1 to apply the custom Group Policy settings by:

Creating a new Group Policy Object (GPO) and linking the GPO to the domain
Modifying AADDC Computers GPO
Modifying the default domain GPO

A. Mastered

B. Not Mastered

Answer: A

Explanation:

NEW QUESTION 160

- (Topic 3)

Note: This question is part of a series of questions that present the same scenario. Each question in the series contains a unique solution that might meet the stated goals. Some question sets might have more than one correct solution, while others might not have a correct solution.

After you answer a question in this section, you will NOT be able to return to it. As a result, these questions will not appear in the review screen.

You are planning the deployment of DNS to a new network.

You have three internal DNS servers as shown in the following table.

Name	Location	IP address	Local DNS zone
Server1	Montreal	10.0.1.10	contoso.local
Server2	Toronto	10.0.2.10	east.contoso.local
Server3	Seattle	10.0.3.10	west.contoso.local

The contoso.local zone contains zone delegations for east.contoso.local and west.contoso.local. All the DNS servers use root hints. You need to ensure that all the DNS servers can resolve the names of all the internal namespaces and internet hosts. Solution: On Server2 and Server3, you configure a conditional forwarder for contoso.local. Does this meet the goal?

- A. Yes
B. No

Answer: B

Explanation:

[https://docs.microsoft.com/en-us/previous-versions/windows/it-pro/windows-server-2008-r2-and-2008/cc794735\(v=ws.10\)](https://docs.microsoft.com/en-us/previous-versions/windows/it-pro/windows-server-2008-r2-and-2008/cc794735(v=ws.10))

NEW QUESTION 163

HOTSPOT - (Topic 3)

You have an Azure subscription named sub1 and 500 on-premises virtual machines that run Windows Server.

You plan to onboard the on-premises virtual machines to Azure Arc by running the Azure Arc deployment script.

You need to create an identity that will be used by the script to authenticate access to sub1. The solution must use the principle of least privilege.

How should you complete the command? To answer, select the appropriate options in the answer area.

NOTE: Each correct selection is worth one point.

Answer Area

<div>New-AzADAppCredential New-AzADServicePrincipal New-AzUserAssignedIdentity</div>	-DisplayName 'Arc-for-servers' -Role	<div>'Azure Connected Machine Onboarding' 'Virtual Machine Contributor' 'Virtual Machine User Login'</div>
--	--------------------------------------	--

- A. Mastered
B. Not Mastered

Answer: A

Explanation:

Answer Area

<div>New-AzADAppCredential New-AzADServicePrincipal New-AzUserAssignedIdentity</div>	-DisplayName 'Arc-for-servers' -Role	<div>'Azure Connected Machine Onboarding' 'Virtual Machine Contributor' 'Virtual Machine User Login'</div>
--	--------------------------------------	--

NEW QUESTION 165

HOTSPOT - (Topic 3)

You have a Group Policy Object (GPO) named GPO1 that contains user settings only.

You plan to apply GPO1 to a global security group named Group1.

You link GPO1 to the domain, and you remove all the permissions granted to the Authenticated Users group.

You need to configure permissions for GPO1 to meet the following requirements.

- GPO1 must apply only to the users in Group 1.
- The solution must use the principle of least privilege

Answer Area

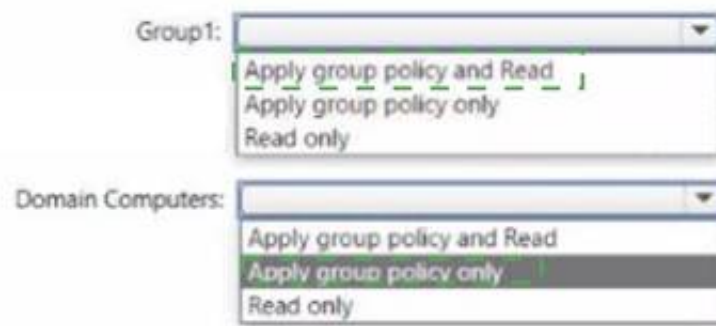
Group1:	<div>Apply group policy and Read Apply group policy only Read only</div>
Domain Computers:	<div>Apply group policy and Read Apply group policy only Read only</div>

- A. Mastered
B. Not Mastered

Answer: A

Explanation:

Answer Area



NEW QUESTION 166

- (Topic 3)

You have an on-premises Active Directory Domain Services (AD DS) domain that syncs with an Azure Active Directory (Azure AD) tenant. You plan deploy 100 new Azure virtual machines that will run Windows Server. You need to ensure that each new virtual machine is joined to the AD DS domain. What should you use?

- A. Azure AD Connect
- B. a Group Policy Object (GPO)
- C. an Azure Resource Manager (ARM) template
- D. an Azure management group

Answer: C

Explanation:

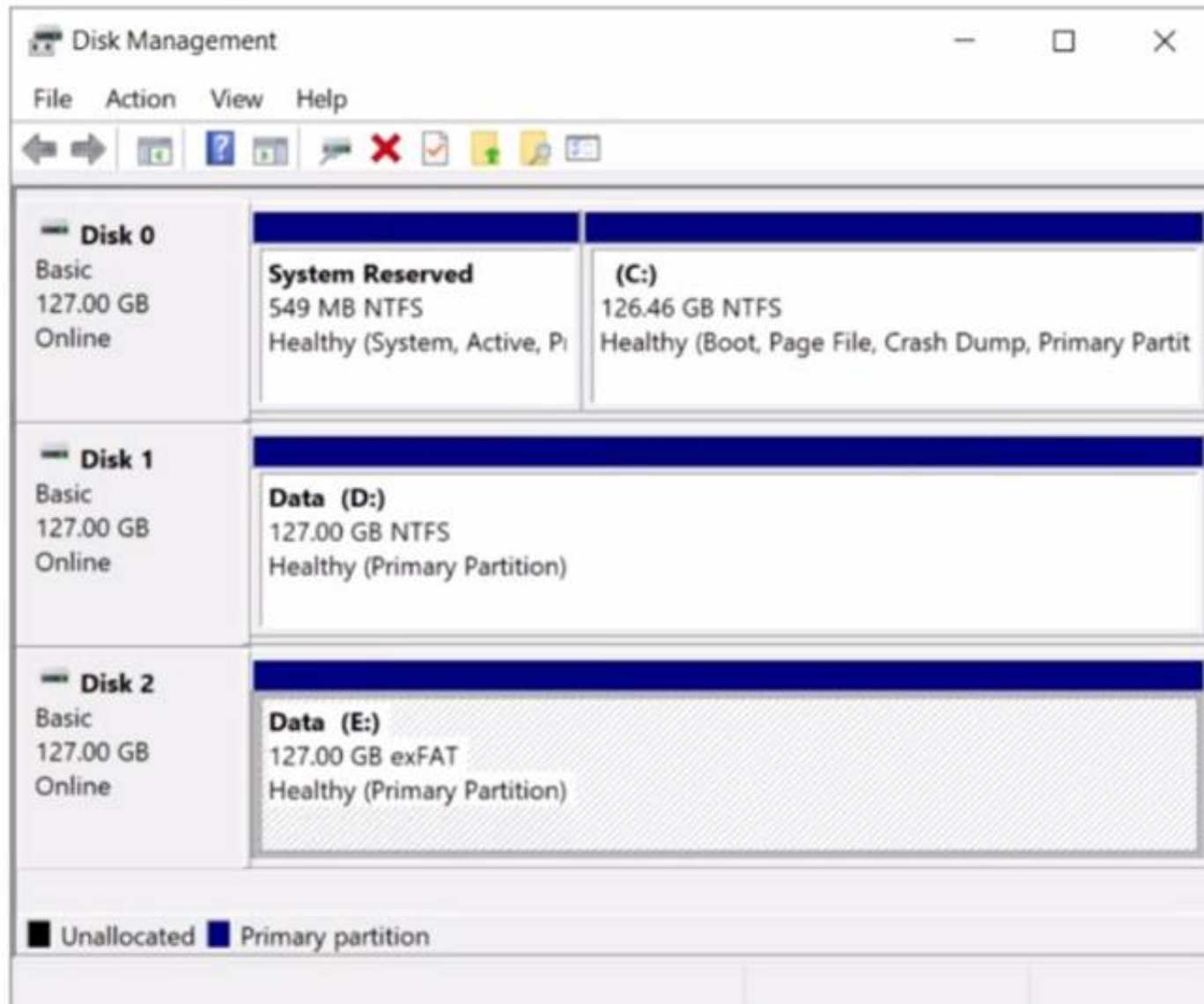
Reference:

<https://www.ludovicmedard.com/create-an-arm-template-of-a-virtual-machine-automatically-joined-to-a-domain/>

NEW QUESTION 171

- (Topic 3)

You have a server named Server1 that runs Windows Server. The disks on Server1 are configured as shown in the following exhibit.



You need to convert volume E to ReFS. The solution must meet the following requirements:

- Preserve the existing data on volume E.
- Minimize administrative effort. What should you do first?

- A. Take Disk 2 offline.
- B. Back up the data on volume E.
- C. Convert Disk 2 to a dynamic disk.
- D. Runconvert.exe.

Answer: B

NEW QUESTION 176

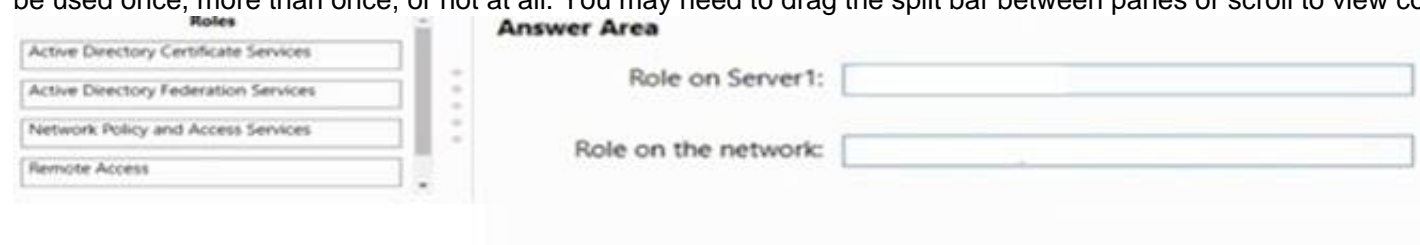
DRAG DROP - (Topic 3)

Your network contains an Active Directory domain, a web app named App1, and a perimeter network. The perimeter network contains a server named Server1 that runs Windows Server.

You plan to provide external access to App1.

You need to implement the Web Application Proxy role service on Server1.

Which role should you add to Server1, and which role should you add to the network? To answer, drag the appropriate roles to the correct targets. Each role may be used once, more than once, or not at all. You may need to drag the split bar between panes or scroll to view content.



- A. Mastered
- B. Not Mastered

Answer: A

Explanation:



NEW QUESTION 181

- (Topic 3)

Your network contains an Active Directory Domain Services (AD DS) domain. The domain contains the resources shown in the following table.

Name	Description
CLIENT1	Client computer that runs Windows
DC1	Domain controller
Server1	File server
Server2	File server

You plan to replicate a volume from Server1 to Server2 by using Storage Replica. You need to configure Storage Replica. Where should you install Windows Admin Center?

- A. Server 1
- B. CLIENT1
- C. DC1
- D. Server2

Answer: A

NEW QUESTION 182

- (Topic 3)

You have a server named Server1 that hosts Windows containers. You plan to deploy an application that will have multiple containers. Each container will be You need to create a Docker network that supports the deployment of the application. Which type of network should you create?

- A. transparent
- B. I2bridge
- C. NAT
- D. I2tunnel

Answer: A

Explanation:

Reference:

<https://docs.microsoft.com/en-us/virtualization/windowscontainers/container-networking/network-drivers-topologies>

NEW QUESTION 186

- (Topic 3)

Your network contains an Active Directory Domain Services (AD DS) forest. The forest contains three Active Directory sites named Site1, Site2, and Site3. Each site contains two domain controllers. The sites are connected by using DEFAULTIPSITELINK.

You open a new branch office that contains only client computers.

You need to ensure that the client computers in the new office are primarily authenticated by the domain controllers in Site1.

Solution: You configure the Try Next Closest Site Group Policy Object (GPO) setting in a GPO that is linked to Site1.

Does this meet the goal?

- A. Yes

B. No

Answer: B

NEW QUESTION 188

- (Topic 3)

You have an Active Directory Domain Services (AD DS) domain. The domain contains a member server named Server1 that runs Windows Server. You need to ensure that you can manage password policies for the domain from Server1. Which command should you run first on Server1?

- A. Install-Windows Feature RSAT-AO-PowerShell
- B. Install-Windows Feature 6PHC
- C. Install-Windows Feature RSAT-AD-Tools
- D. Install-Windows Feature RSAT-AWIMS

Answer: C

NEW QUESTION 193

- (Topic 3)

You have a server named Server1 that runs Windows Server and contains two drives named C and D. Server1 hosts multiple file shares. You enable Data Deduplication on drive D and select the General purpose file server workload. You need to minimize the space consumed by files that were recently modified or deleted. What should you do?

- A. Run the set-dedupvolume cmdlet and configure the scrubbing job.
- B. Run the Set-DedupSchedule Cmdlet and configure a GarbageCollection job.
- C. Run the set-dedupvolume cmdlet and configure the InputOutputScale settings.
- D. Run the Set-DedupSchedule cmdlet and configure the optimization job.

Answer: B

NEW QUESTION 198

HOTSPOT - (Topic 3)

Your network contains two Active Directory Domain Services (AD DS) forests named contoso.com and fabrikam.com. A two-way forest trust exists between the forests. Each forest contains a single domain. The domains contain the servers shown in the following table.

Name	Domain	Description
Server1	contoso.com	Hosts a Windows Admin Center gateway
Server2	fabrikam.com	Hosts resources that will be managed remotely by using Windows Admin Center on Server1

You need to configure resources based constrained delegation so that the users in contoso.com can use Windows Admin Center on Server1 to connect to Server2. How should you complete the command? To answer, select the appropriate options in the answer area.

NOTE: Each correct selection is worth one point.

Answer Area

Set-ADComputer -Identity

(Get-ADComputer server1.contoso.com)

(Get-ADComputer server2.fabrikam.com)

(Get-ADGroup 'Contoso\Domain Users')

(Get-ADGroup 'Fabrikam\Domain Users')

-PrincipalsAllowedToDelegateToAccount

(Get-ADComputer server1.contoso.com)

(Get-ADComputer server2.fabrikam.com)

(Get-ADGroup 'Contoso\Domain Users')

(Get-ADGroup 'Fabrikam\Domain Users')

- A. Mastered
- B. Not Mastered

Answer: A

Explanation:

Answer Area

Set-ADComputer -Identity

(Get-ADComputer server1.contoso.com)

(Get-ADComputer server2.fabrikam.com)

(Get-ADGroup 'Contoso\Domain Users')

(Get-ADGroup 'Fabrikam\Domain Users')

-PrincipalsAllowedToDelegateToAccount

(Get-ADComputer server1.contoso.com)

(Get-ADComputer server2.fabrikam.com)

(Get-ADGroup 'Contoso\Domain Users')

(Get-ADGroup 'Fabrikam\Domain Users')

NEW QUESTION 202

- (Topic 3)

You have servers that have the DNS Server role installed. The servers are configured as shown in the following table.

Name	Office	Local DNS zone	IP address
Server1	Paris	contoso.com	10.1.1.1
Server2	New York	None	10.2.2.2

All the client computers in the New York office use Server2 as the DNS server. You need to configure name resolution in the New York office to meet the following requirements:

- ? Ensure that the client computers in New York can resolve names from contoso.com.
- ? Ensure that Server2 forwards all DNS queries for internet hosts to 131.107.100.200.

The solution must NOT require modifications to Server1. Each correct answer presents part of the solution. NOTE: Each correct selection is worth one point.

- A. a forwarder
- B. a conditional forwarder
- C. a delegation
- D. a secondary zone
- E. a reverse lookup zone

Answer: AB

Explanation:

A conditional forwarder is required for contoso.com. A forwarder is required for all other domains.
When you have a conditional forwarder and a forwarder configured, the conditional forwarder will be used for the specified domain.
You could use a secondary zone for contoso.com but that would require a configuration change on Server1.

NEW QUESTION 206

HOTSPOT - (Topic 3)

You have a server named Server1 that runs Windows Server and contains three volumes named C, D, and E. Files are stored on Server1 as shown in the following table.

Name	On volume	Size
File1	C	500 KB
File2	D	10 KB
File3	D	1 MB

For volume D, Data Deduplication is enabled and set to General purpose file server. You perform the following actions:

- Move File1 to volume D.
- Copy File2 to volume D and name the copy File4.
- Move File3 to volume E

For each of the following statements, select Yes if the statement is true. Otherwise, select No. NOTE: Each correct selection is worth one point.

Statements	Yes	No
File1 is deduplicated after the deduplication job runs.	<input type="radio"/>	<input type="radio"/>
File3 is deduplicated after the deduplication job runs.	<input type="radio"/>	<input type="radio"/>
File4 is deduplicated after the deduplication job runs.	<input type="radio"/>	<input type="radio"/>

- A. Mastered
- B. Not Mastered

Answer: A

Explanation:

Statements	Yes	No
File1 is deduplicated after the deduplication job runs.	<input type="radio"/>	<input checked="" type="radio"/>
File3 is deduplicated after the deduplication job runs.	<input type="radio"/>	<input checked="" type="radio"/>
File4 is deduplicated after the deduplication job runs.	<input checked="" type="radio"/>	<input type="radio"/>

NEW QUESTION 210

- (Topic 2)

You need to configure the Group Policy settings to ensure that the Azure Virtual Desktop session hosts meet the security requirements. What should you configure?

- A. security filtering for the link of GP04
- B. security filtering for the link of GPO1
- C. loopback processing in GPO4
- D. the Enforced property for the link of GP01
- E. loopback processing in GPO1
- F. the Enforced property for the link of GP04

Answer: C

NEW QUESTION 212

HOTSPOT - (Topic 2)

You need to configure network communication between the Seattle and New York offices. The solution must meet the networking requirements.
What should you configure? To answer, select the appropriate options in the answer area. NOTE: Each correct selection is worth one point.

On a Virtual WAN hub:

An ExpressRoute gateway
A virtual network gateway
An ExpressRoute circuit connection

In the offices:

An ExpressRoute circuit connection
A Site to-Site VPN
An Azure application gateway
An on premises data gateway

- A. Mastered
- B. Not Mastered

Answer: A

Explanation:

On a Virtual WAN hub:

An ExpressRoute gateway
A virtual network gateway
An ExpressRoute circuit connection

In the offices:

An ExpressRoute circuit connection
A Site to-Site VPN
An Azure application gateway
An on premises data gateway

NEW QUESTION 214

DRAG DROP - (Topic 2)

You need to meet the security requirements for passwords.

Where should you configure the components for Azure AD Password Protection? To answer, drag the appropriate components to the correct locations. Each component may be used once, more than once, or not at all. You may need to drag the split bar between panes or scroll to view content.

NOTE Each correct selection is worth one point.

Locations

DC1 only

All the domain controllers

VM1 and VM2

The Azure AD tenant

Answer Area

The Azure AD Password Protection DC agent:

Location

The Azure AD Password Protection proxy service:

Location

A custom banned password list:

Location

- A. Mastered
- B. Not Mastered

Answer: A

Explanation:

Locations

DC1 only

All the domain controllers

VM1 and VM2

The Azure AD tenant

Answer Area

The Azure AD Password Protection DC agent:

All the domain controllers

The Azure AD Password Protection proxy service:

VM1 and VM2

A custom banned password list:

The Azure AD tenant

NEW QUESTION 217

- (Topic 2)

You need to configure remote administration to meet the security requirements. What should you use?

- A. just in time (JIT) VM access
- B. Azure AD Privileged Identity Management (PIM)
- C. the Remote Desktop extension for Azure Cloud Services
- D. an Azure Bastion host

Answer: A

Explanation:

Reference:
<https://docs.microsoft.com/en-us/azure/defender-for-cloud/just-in-time-access-usage?tabs=jit-config-asc%2Cjit-request-asc>

NEW QUESTION 218

- (Topic 1)
You need to meet the technical requirements for Server1. Which users can currently perform the required tasks?

- A. Admin1 only
- B. Admin3 only
- C. Admin1 and Admin3 only
- D. Admin1 Admin2. and Admm3

Answer: C

NEW QUESTION 220

HOTSPOT - (Topic 1)
For each of the following statements, select Yes if the statement is true. Otherwise, select No.
NOTE: Each correct selection is worth one point.

Answer Area

Statements	Yes	No
Admin1 must use a password that has at least 14 characters.	<input type="radio"/>	<input type="radio"/>
User1 must use a password that has at least 10 characters.	<input type="radio"/>	<input type="radio"/>
If Admin1 creates a new local user on Server1, the password for the new user must be at least eight characters.	<input type="radio"/>	<input type="radio"/>

- A. Mastered
- B. Not Mastered

Answer: A

Explanation:

Answer Area

Statements	Yes	No
Admin1 must use a password that has at least 14 characters.	<input type="radio"/>	<input checked="" type="radio"/>
User1 must use a password that has at least 10 characters.	<input checked="" type="radio"/>	<input type="radio"/>
If Admin1 creates a new local user on Server1, the password for the new user must be at least eight characters.	<input type="radio"/>	<input checked="" type="radio"/>

NEW QUESTION 221

- (Topic 1)
You need to meet the technical requirements for User1. The solution must use the principle of least privilege. What should you do?

- A. Add Users1 to the Server Operators group in contoso.com.
- B. Create a delegation on contoso.com.
- C. Add Users1 to the Account Operators group in contoso.com.
- D. Create a delegation on OU3.

Answer: D

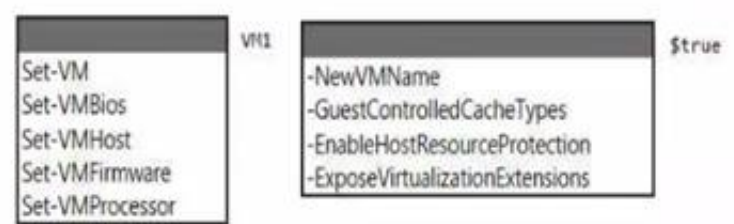
Explanation:

Reference:
<https://docs.microsoft.com/en-us/windows-server/identity/ad-ds/plan/delegating-administration-of-account-ous-and-resource-ous>

NEW QUESTION 222

HOTSPOT - (Topic 1)
You need to meet the technical requirements for VM1.
Which cmdlet should you run first? To answer, select the appropriate options in the answer area.
NOTE: Each correct selection is worth one point.

Answer Area



- A. Mastered
- B. Not Mastered

Answer: A

Explanation:

Graphical user interface, text, application Description automatically generated

NEW QUESTION 227

- (Topic 1)

You need to meet the technical requirements for VM3 On which volumes can you enable Data Deduplication?

- A. D and E only
- B. C, D, E, and F
- C. D only
- D. C and D only
- E. D, E, and F only

Answer: A

Explanation:

Reference:

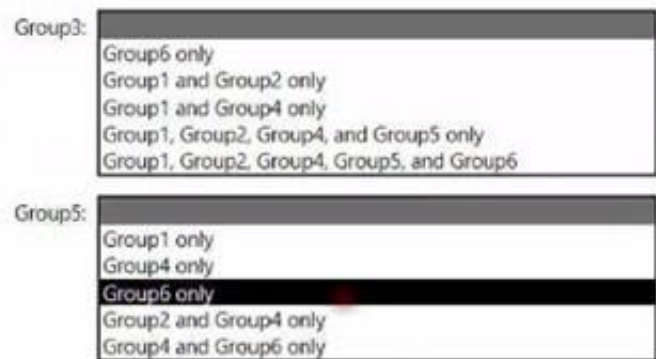
<https://docs.microsoft.com/en-us/windows-server/storage/data-deduplication/interop>

NEW QUESTION 231

HOTSPOT - (Topic 1)

Which groups can you add lo Group3 and Groups? To answer, select the appropriate options in the answer area. NOTE Each correct selection is worth one point.

Answer Area



- A. Mastered
- B. Not Mastered

Answer: A

Explanation:

Answer Area



NEW QUESTION 236

.....

Relate Links

100% Pass Your AZ-800 Exam with ExamBible Prep Materials

<https://www.exambible.com/AZ-800-exam/>

Contact us

We are proud of our high-quality customer service, which serves you around the clock 24/7.

Viste - <https://www.exambible.com/>