

Cisco

Exam Questions 350-501

Implementing and Operating Cisco Service Provider Network Core Technologies



NEW QUESTION 1

Why do Cisco MPLS TE tunnels require a link-state routing protocol?

- A. The link-state database provides segmentation by area, which improves the path-selection process.
- B. The link-state database provides a data repository from which the tunnel endpoints can dynamically select a source ID.
- C. Link-state routing protocols use SPF calculations that the tunnel endpoints leverage to implement the tunnel.
- D. The tunnel endpoints use the link-state database to evaluate the entire topology and determine the best path.

Answer: D

NEW QUESTION 2

You are configuring MPLS traffic-engineering tunnels in the core. Which two ways exist for the tunnel path across the core? (Choose two.)

- A. The dynamic path option is supported only with IS-IS.
- B. Tunnels can be configured with dynamic path or explicitly defined path.
- C. A zero bandwidth tunnel is not a valid option.
- D. The bandwidth statement creates a “hard” reservation on the link.
- E. Tunnel links inherit IGP metrics by default unless overridden.

Answer: BE

NEW QUESTION 3

After you analyze your network environment, you decide to implement a full separation model for Internet access and MPLS L3VPN services. For which reason do you make this decision?

- A. It enables EGP and IGP to operate independently.
- B. It enables you to choose whether to separate or centralize each individual service.
- C. It is easier to manage a system in which services are mixed.
- D. It requires only one edge router.

Answer: A

NEW QUESTION 4

```
ip flow-export destination 192.168.1.2
ip flow-export version 9

interface gigabitethernet0/1
ip flow ingress
```

Refer to the exhibits. Which information is provided for traceback analysis when this configuration is applied?

- A. source interface
- B. packet size distribution
- C. IP sub flow cache
- D. BGP version

Answer: C

NEW QUESTION 5

```
Router 1:

ip route 192.168.1.0 255.255.255.0 null 0 tag 1

route-map ddos
match tag 1
set local preference 150
set community no export

route-map ddos permit 20

router bgp 65513
 redistribute static route-map ddos

Router 2:

Interface gigabitethernet0/1
ip verify unicast reverse-path
```

Refer to the exhibit. An engineer is preparing to implement data plane security configuration. Which statement about this configuration is true?

- A. Router 2 is the router receiving the DDoS attack.
- B. Router 1 must be configured with uRPF for the RTBH implementation to be effective.
- C. Router 1 is the trigger router in a RTBH implementation.
- D. Router 2 must configure a route to null 0 for network 192.168.1.0/24 for the RTBH implementation to be complete.

Answer: A

NEW QUESTION 6

Which additional feature does MPLS DiffServ tunneling support?

- A. matching EXP and DSCP values
- B. PHB layer management
- C. using GRE tunnels to hide markings
- D. interaction between MPLS and IGP

Answer: B

NEW QUESTION 7

You are creating new Cisco MPLS TE tunnels. Which type of RSVP message does the headend router send to reserve bandwidth on the path to the tailend router?

- A. path
- B. tear
- C. error
- D. reservation

Answer: A

NEW QUESTION 8

```
PE-A#show ip bgp vpnv4 vrf Customer-A neighbors 10.10.10.2 routes
BGP table version is 13148019, local router ID is 10.10.10.10
Status codes: s suppressed, d damped, h history, * valid, > best, i - internal,
               r RIB-failure, S Stale, m multipath, b backup-path, f RT-Filter,
               x best-external, a additional-path, c RIB-compressed,
Origin codes: i - IGP, e - EGP, ? - incomplete
RPKI validation codes: V valid, I invalid, N Not found

   Network          Next Hop          Metric LocPrf Weight Path
Route Distinguisher: 65000:1111 (default for vrf Customer-A)
*>  192.168.0/19     10.10.10.2           0           0 4282 65001 ?
*>  192.168.0/17     10.10.10.2           0           0 4282 65001 ?
*>  192.168.0/16     10.10.10.2           0           0 4282 65001 ?

Total number of prefixes 5

PE-A#config t
Enter configuration commands, one per line. End with CNTL/Z.
PE-A(config)#ip prefix-list ALLOW permit 192.168.0.0/16 ge 17 le 19
PE-A(config)#router bgp 65000
PE-A(config-router)#address-family ipv4 vrf Customer-A
PE-A(config-router-af)#neighbor 10.10.10.2 prefix-list ALLOW in
```

Refer to the exhibit. Which three outcomes occur if the prefix list is added to the neighbor? (Choose three.)

- A. 192.168.0.0/16 is denied.
- B. 192.168.0.0/16 is permitted.
- C. 192.168.0.0/19 is permitted
- D. 192.168.0.0/19 is denied.
- E. 192.168.0.0/17 is permitted
- F. 192.168.0.0/17 is denied.

Answer: ACF

NEW QUESTION 9

```
R1
router bgp 65000
router-id 192.168.1.1
neighbor 192.168.1.2 remote-as 65012
neighbor 192.168.1.2 local-as 65112
```

Refer to the exhibit. A network engineer is implementing a BGP protocol. Which effect of the local-as keyword in this configuration is true?

- A. It enables peer 192.168.1.2 to establish a BGP relationship with R1 using AS 65012 without additional configuration.
- B. It enables peer 192.168.1.2 to establish a BGP relationship with R1 using AS 65112 and the VPNv4 address family.
- C. It enables peer 192.168.1.2 to establish a BGP relationship with R1 using AS 65012 and the VPNv4 address family.
- D. It enables peer 192.168.1.2 to establish a BGP relationship with R1 using AS 65112 without additional configuration.

Answer: D

NEW QUESTION 10

```
R1
router isis
 net 49.0012.1111.1111.1111.00
 is-type level-1
 area-password cisco
R2
router isis
 net 49.0022.1111.1111.1112.00
 is-type level-1-2
 area-password cisco
```

Refer to the exhibit Which effect of this configuration is true?

- A. The two routers fail to form a neighbor relationship because they have different IS-IS area types.
- B. The two routers successfully form a neighbor relationship.
- C. The two routers fail to form a neighbor relationship because the authentication configuration is missing.
- D. The two routers fail to form a neighbor relationship because their system IDs are different.

Answer: B

NEW QUESTION 10

A customer of an ISP requests support to setup a BGP routing policy. Which BGP attribute should be configured to choose specific BGP speakers as preferred points for the customer AS?

- A. lowest multi-exit discriminator
- B. highest local preference outbound
- C. lowest local preference inbound
- D. highest local preference inbound

Answer: B

NEW QUESTION 15

Refer to the exhibit. Which statement about the neighbor statements for 192.168.1.1 is true?

- A. The router sends BGP labels for its prefixes to this peer.
- B. The router must have TDP configured for the send-label command to operate.
- C. The neighbor router receives at least four labels from this router.
- D. The router sends only a label for the prefix for Loopback0.

Answer: A

NEW QUESTION 16

<pre>PE-A ! interface FastEthernet0/0 ip address 10.10.10.1 255.255.255.252 ip ospf authentication null ip ospf 1 area 0 duplex full end ! router ospf 1 log-adjacency-changes passive-interface Loopback0 network 10.10.10.0 0.0.0.3 area 0 default-metric 200 !</pre>	<pre>PE-B ! interface FastEthernet0/0 ip address 10.10.10.2 255.255.255.252 ip ospf authentication null ip mtu 1400 ip ospf 1 area 0 duplex half end ! R1#sho run b router ospf router ospf 1 log-adjacency-changes passive-interface Loopback10 network 10.10.10.0 0.0.0.255 area 0 default-metric 100</pre>
--	---

Refer to the exhibit. Which configuration prevents the OSPF neighbor from establishing?

- A. default-metric
- B. duplex
- C. network statement
- D. mtu

Answer: D

NEW QUESTION 19

Which two tasks must you perform when you implement LDP NSF on your network? (Choose two.)

- A. Enable NSF for BGP.
- B. Implement direct connections for LDP peers.
- C. Enable NSF for EIGRP.
- D. Disable Cisco Express Forwarding.
- E. Enable NSF for the link-state routing protocol that is in use on the network.

Answer: BE

NEW QUESTION 24

```
R1
interface fastethernet1/0
  ip address 192.168.1.3 255.255.255.0
router bgp 65000
  router-id 192.168.1.1
  neighbor 192.168.1.2 remote-as 65012

R2
interface fastethernet1/0
  ip address 192.168.1.2 255.255.255.0
router bgp 65012
  router-id 192.168.1.1
  neighbor 192.168.1.3 remote-as 65000
  neighbor 192.168.1.3 local-as 65112
```

Refer to the exhibit. Assume all other configurations are correct and the network is otherwise operating normally. Which conclusion can you draw about the neighbor relationship between routers R1 and R2?

- A. The neighbor relationship is up.
- B. The neighbor relationship will be up only if the two devices have activated the correct neighbor relationships under the IPv4 address family.
- C. The neighbor is down because the local-as value for R2 is missing in the R1 neighbor statement.
- D. The neighbor relationship is down because R1 believes R2 is in AS 65012.

Answer: D

NEW QUESTION 25

```
R1

router bgp 65000
  router-id 192.268.1.1
  neighbor 192.168.1.2 remote-as 65001
  neighbor 192.168.1.2 password cisco
```

Refer to the exhibit Router R1 and its peer R2 reside on the same subnet in the network. If an engineer implements this configuration to R1, how does it make connections to R2?

- A. R1 establishes TCP connections that are authenticated with a clear-text password.
- B. R1 establishes UDP connections that are authenticated with an MD5 password.
- C. R1 establishes UDP connections that are authenticated with a clear-text password.
- D. R1 establishes TCP connections that are authenticated with an MD5 password.

Answer: D

NEW QUESTION 29

How much must the MTU be increased when configuring the 802.1q VLAN tag?

- A. 2 bytes
- B. 4 bytes
- C. 8 bytes
- D. 12 bytes

Answer: B

NEW QUESTION 30

You are writing an RPL script to accept routes only from certain autonomous systems. Consider this code:

```
RP/0/RP0/CPU0:router(config-rpl)# if as-path in (ios-regex '.*77$') RP/0/RP0/CPU0:router(config-rpl-if)# pass RP/0/RP0/CPU0:router(config-rpl-if)# endif
```

If you apply this code to BGP filters, which effect does the code have on your router?

- A. denies routes from AS 7070
- B. allows routes from AS 7077
- C. denies routes from AS 7007
- D. allows routes from AS 770

Answer: B

NEW QUESTION 31

Which regular expression query modifier function indicates the start of a string?

- A. +
- B. ^

- C. \$
- D. [^]

Answer: B

NEW QUESTION 36

You are testing the capabilities of MPLS OAM ping. Which statement is true?

- A. An LSP is not required for the reply to reach the ingress MPLS router.
- B. An LSP breakage results in the ingress MPLS router never receiving any reply.
- C. MPLS OAM ping works solely with P2P LSPs.
- D. MPLS OAM ping works solely with Cisco MPLS TE.

Answer: B

NEW QUESTION 40

In an MPLS network, which protocol can be used to distribute a Segment Prefix?

- A. LDP
- B. EIGRP
- C. OSPF
- D. RSVP-TE

Answer: C

NEW QUESTION 45

Which utility can you use to locate MPLS faults?

- A. MPLS LSP ping
- B. QoS
- C. MPLS traceroute
- D. EEM

Answer: C

NEW QUESTION 46

<pre>mpls traffic-eng tunnels segment-routing mpls connected-prefix-sid-map address-family ipv4 192.168.1.1/32 index 10 range 1 exit-address-family set-attributes address-family ipv4 sr-label-preferred exit-address-family interface Loopback1 ip address 192.168.1.1 255 255.255.255 ip router isis 1</pre>	<pre>int gig0/0 ip address 192.168.1.2 255.255.255.0 ip router isis 1 mpls traffic-eng tunnels isis network point-to-point router isis 1 net 50.0000.0000.0000.0001.00 metric-style wide is-type level-1 segment-routing mpls segment-routing prefix-sid-map advertise-local mpls traffic-eng router-id Loopback1 mpls traffic-eng level-1</pre>
---	--

Refer to the exhibit. Which statement about this configuration is true?

- A. It requires a dynamic Cisco MPLS TE path to be configured for the tunnel to run.
- B. It requires OSPF to also be running to have optimized Cisco MPLS TE tunnels.
- C. It is the configuration for the head-end router of a Cisco MPLS TE tunnel with segment routing.
- D. It requires an explicit Cisco MPLS TE path to be configured for the tunnel to run.

Answer: C

NEW QUESTION 47

A router RP is configured to perform MPLS LDP graceful restart.

Which three steps are included when the RP sends an LDP initialization message to a neighbor to establish an LDP session? (Choose three.)

- A. Learn from Neighbor (N) flag, set to 1
- B. Recovery Time field
- C. Type-9 LSA
- D. Reconnect Timeout field
- E. Graceful restart capability in OPEN message
- F. Learn from Network (L) flag, set to 1

Answer: BDF

NEW QUESTION 48

```
class-map WEB
match protocol http
```

Refer to the exhibit. Which statement describes the effect of this configuration?

- A. It matches HTTP traffic for use in a policy map.
- B. It applies a service policy to all interfaces remarking HTTP traffic.
- C. It creates an ACL named WEB that filters HTTP traffic.
- D. It modifies the default policy map to allow all HTTP traffic through the router.

Answer: A

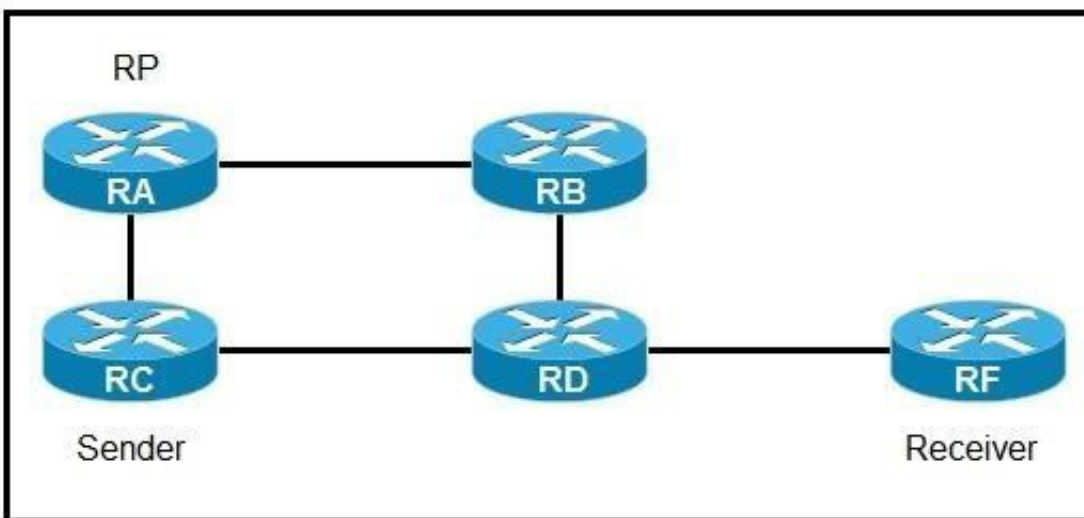
NEW QUESTION 52

A regional MPLS VPN provider operates in two regions and wants to provide MPLS L3VPN service for a customer with two sites in these separate locations. The VPN provider approaches another organization to provide backbone carrier services so that the provider can connect to these two locations. Which statement about this scenario is true?

- A. When edge routers at different regional sites are connected over the global carrier backbone, MP-eBGP must run between the routers to exchange the customer VPNv4 routes.
- B. When eBGP is used for label exchange using the send-label option, MPLS-BGP forwarding is configured under the global ABC CSC PE-to-CE interface.
- C. When BGP is used for both route and label exchange, the neighbor a.b.c.d send-label command is used under the address-family VPNv4 command mode.
- D. When IGP is used for route exchange and LDP for label exchange, MPLS is enabled only on the VRF interface on the backbone-carrier PE side.

Answer: B

NEW QUESTION 55



Refer to the exhibit. If router A is the RP, which PIM mode can you configure so that devices will send multicast traffic toward the RP?

- A. PIM-SM
- B. BIDIR-PIM
- C. PIM-SSM
- D. PIM-DM

Answer: A

NEW QUESTION 59

```
route-policy qppb-as6000
if as-path in (ios-regex '61100, 61200, 61300') then
set qos-group 10

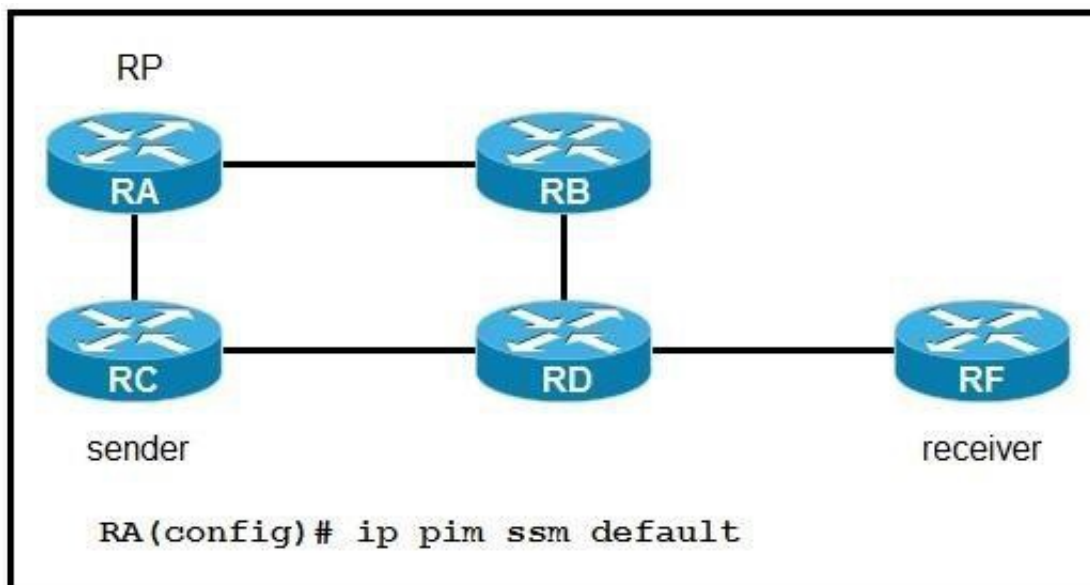
router bgp 100 bgp
table-policy qppb-as6000
```

Refer to the exhibit. Which statement supports QPPB implementation?

- A. QPPB policies affect only egress traffic.
- B. QoS policies rely exclusively on BGP attributes to manipulate traffic.
- C. QoS policies are identified in the MPLS forwarding table.
- D. QoS policies use BGP to gain full coverage on the network.

Answer: D

NEW QUESTION 63



Refer to the exhibit. If router RA is configured as shown, which IPv4 multicast address space does it use?

- A. 224.0.0.0/8
- B. 225.0.0.0/8
- C. 232.0.0.0/8
- D. 239.0.0.0/8

Answer: C

NEW QUESTION 64

Refer to the exhibit. Which command is used to complete this configuration for QoS class-based marking?

- A. PE-A(config-pmap-c)#set dscp ef
- B. PE-A(config-pmap-c)#priority
- C. PE-A(config-pmap-c)#random-detect
- D. PE-A(config-pmap-c)#fair-queue

Answer: A

NEW QUESTION 69

What is the difference between SNMP and model- driven telemetry?

- A. SNMP uses the YANG data modeling language.
- B. Telemetry uses traps and inform messages to deliver data to a network administrator on a polling basis.
- C. Telemetry allows for modeled network data to be pushed to the network administrator on an as-needed basis.
- D. SNMP pushes network data to the network administrator whenever it is queried.

Answer: C

NEW QUESTION 71

Which service is a VNF role?

- A. Network
- B. Firewall
- C. Storage
- D. Compute

Answer: A

NEW QUESTION 74

POST https://router1:8000/api/mo/uni/Descriptions.xml

Refer to the exhibit. What does the REST API command do?

- A. It removes the information identified by Descriptions.xml.
- B. It executes the information specified in Descriptions.xml.
- C. It retrieves the information requested by Descriptions.xml.
- D. It displays the information identified by Descriptions.xml.

Answer: C

NEW QUESTION 77

What do Ansible and SaltStack have in common?

- A. They both have agents running on the client machine.
- B. They both can be designed with more than one master server.
- C. They both use DSL configuration language.
- D. They both use YAML configuration language.

Answer: D

NEW QUESTION 78

```
<data>
<rpc-reply>
```

Refer to the exhibit. This output is included at the end of an output that was provided by a device using NETCONF. What does the code show?

- A. It shows that the full configuration is being modeled by YANG.
- B. It shows NETCONF uses remote procedure calls.
- C. It shows the hostname of the device as rpc-reply.
- D. It shows that the running configuration is blank.

Answer: B

NEW QUESTION 80

Refer to the exhibit. Which statement describes this configuration?

- A. Router 1 has a new data store to collect SNMP information, but configuration must still be done at the CLI only.
- B. Router 1 can be remotely managed by the CLI using Telnet.
- C. Router 1 has its running configuration locked so changes can be made only when the administrator issues a kill session.
- D. Router 1 has a temporary data store where a copy of the running configuration can be manipulated and verified before committing the configuration.

Answer: D

NEW QUESTION 83

```
telemetry model-driven
sensor-group cisco
sensor-path Cisco-IOS-XR-infra-statsd-oper:infra-statistics/interfaces/interface/latest/generic-counters
commit
```

Refer to the exhibit. This configuration is being applied on an IOS XR route. Which statement about this configuration is true?

- A. It is used to create a sensor-group and has a list of YANG models for streaming.
- B. It is used to create a subscription to specify the streaming interval.
- C. It is used to identify MIB entries and has a list of YANG models.
- D. It is used to identify traps for SNMP polling.

Answer: A

NEW QUESTION 85

.....

Thank You for Trying Our Product

We offer two products:

1st - We have Practice Tests Software with Actual Exam Questions

2nd - Questions and Answers in PDF Format

350-501 Practice Exam Features:

- * 350-501 Questions and Answers Updated Frequently
- * 350-501 Practice Questions Verified by Expert Senior Certified Staff
- * 350-501 Most Realistic Questions that Guarantee you a Pass on Your First Try
- * 350-501 Practice Test Questions in Multiple Choice Formats and Updates for 1 Year

100% Actual & Verified — Instant Download, Please Click
[Order The 350-501 Practice Test Here](#)