

Exam Questions EX200

EX200 Red Hat Certified System Administrator (RHCSA) Exam

<https://www.2passeasy.com/dumps/EX200/>



NEW QUESTION 1

CORRECT TEXT

Search a String

Find out all the columns that contains the string seismic within /usr/share/dict/words, then copy all these columns to /root/lines.tx in original order, there is no blank line, all columns must be the accurate copy of the original columns.

- A. Mastered
- B. Not Mastered

Answer: A

Explanation:

```
grep seismic /usr/share/dict/words> /root/lines.txt
```

NEW QUESTION 2

CORRECT TEXT

There are two different networks 192.168.0.0/24 and 192.168.1.0/24. Where 192.168.0.254 and 192.168.1.254 IP Address are assigned on Server. Verify your network settings by pinging 192.168.1.0/24 Network's Host.

- A. Mastered
- B. Not Mastered

Answer: A

Explanation:

```
? vi /etc/sysconfing/network NETWORKING=yes HOSTNAME=station?.example.com GATEWAY=192.168.0.254
service network restart
* 2.vi /etc/sysconfig/network-scripts/ifcfg-eth0
DEVICE=eth0 ONBOOT=yes
BOOTPROTO=static
IPADDR=X.X.X.X
NETMASK=X.X.X.X
GATEWAY=192.168.0.254
ifdown eth0
ifup eth0
```

NEW QUESTION 3

CORRECT TEXT

Create a swap space, set the size is 600 MB, and make it be mounted automatically after rebooting the system (permanent mount).

- A. Mastered
- B. Not Mastered

Answer: A

Explanation:

```
? if=/dev/zero of=/swapfile bs=1M count=600 mkswap /swapfile
/etc/fstab:
/swapfile swap swap defaults 0 0 mount -a
```

NEW QUESTION 4

CORRECT TEXT

SELinux must run in force mode.

- A. Mastered
- B. Not Mastered

Answer: A

Explanation:

```
/etc/sysconfig/selinux
SELINUX=enforcing
```

NEW QUESTION 5

CORRECT TEXT

Configure your system so that it is an NTP client of server.domain11.example.com

- A. Mastered
- B. Not Mastered

Answer: A

Explanation:

```
#system-config-date
Note: dialog box will open in that
Check mark Synchronize date and time over network. Remove all the NTP SERVER and click ADD and type
```

server.domain11.example.com
*****And then press ENTER and the press OK*****

NEW QUESTION 6

CORRECT TEXT

In the system, mounted the iso image /root/examine.iso to /mnt/iso directory. And enable automatically mount (permanent mount) after restart system.

- A. Mastered
- B. Not Mastered

Answer: A

Explanation:

```
mkdir -p /mnt/iso
/etc/fstab:
/root/examine.iso /mnt/iso iso9660 loop 0 0 mount -a
mount | grep examine
```

NEW QUESTION 7

CORRECT TEXT

Part 1 (on Node1 Server)

Task 9 [Managing Files from the Command Line]

Search the string nologin in the /etc/passwd file and save the output in /root/strings

- A. Mastered
- B. Not Mastered

Answer: A

Explanation:

*

```
[root@node1 ~]# cat /etc/passwd | grep nologin > /root/strings
[root@node1 ~]# cat /root/strings
bin:x:1:1:bin:/bin:/sbin/nologin
daemon:x:2:2:daemon:/sbin:/sbin/nologin
adm:x:3:4:adm:/var/adm:/sbin/nologin lp:x:4:7:
lp:/var/spool/lpd:/sbin/nologin
mail:x:8:12:mail:/var/spool/mail:/sbin/nologin
```

NEW QUESTION 8

CORRECT TEXT

Install the appropriate kernel update from <http://server.domain11.example.com/pub/updates>.

The following criteria must also be met:

The updated kernel is the default kernel when the system is rebooted The original kernel remains available and bootable on the system

- A. Mastered
- B. Not Mastered

Answer: A

Explanation:

```
? ftp server.domain11.example.com Anonymous login
ftp> cd /pub/updates ftp> ls ftp> mget kernel* ftp> bye
? rpm -ivh kernel*
? vim /etc/grub.conf
Check the updated kernel is the first kernel and the original kernel remains available. set default=0
wq!
```

NEW QUESTION 9

CORRECT TEXT

Create a backup

Create a backup file named /root/backup.tar.bz2, contains the content of /usr/local, tar must use bzip2 to compress.

- A. Mastered
- B. Not Mastered

Answer: A

Explanation:

```
cd /usr/local
tar -jcvf /root/backup.tar.bz2
mkdir /test
tar -jxvf /root/backup.tar.bz2 -C /test// Decompression to check the content is the same as the /usr/loca after
If the questions require to use gzip to compress. change -j to -z.
```

NEW QUESTION 10

CORRECT TEXT

One Logical Volume named /dev/test0/testvolume1 is created. The initial Size of that disk is 100MB now you required more 200MB. Increase the size of Logical

Volume, size should be increase on online.

- A. Mastered
- B. Not Mastered

Answer: A

Explanation:

```
? lvextend -L+200M /dev/test0/testvolume1 Use lvdisplay /dev/test0/testvolume1)
? ext2online -d /dev/test0/testvolume1
```

lvextend command is used the increase the size of Logical Volume. Other command lvresize command also here to resize. And to bring increased size on online we use the ext2online command.

NEW QUESTION 10

CORRECT TEXT

Part 1 (on Node1 Server)

Task 4 [Controlling Access to Files]

Create collaborative directory /mnt/shares with the following characteristics: Group ownership of /mnt/shares should be sharegrp.

The directory should be readable, writable and accessible to member of sharegrp but not to any other user. (It is understood that root has access to all files and directories on the system)

Files created in /mnt/shares automatically have group ownership set to the sharegrp group.

- A. Mastered
- B. Not Mastered

Answer: A

Explanation:

*

```
[root@node1 ~]# mkdir -p /mnt/shares
[root@node1 ~]# ls -lrt /mnt/
[root@node1 ~]# chgrp sharegrp /mnt/shares/
[root@node1 ~]# chmod 2770 /mnt/shares/
[root@node1 ~]# ls -lrt /mnt/
### For Checking ###
[root@node1 ~]# su - harry
[harry@node1 ~]$ cd /mnt/shares/
[harry@node1 shares]$ touch harry
[harry@node1 shares]$ logout
[root@node1 ~]# su - natasha
[natasha@node1 ~]$ cd /mnt/shares/
[natasha@node1 shares]$ touch natasha
[natasha@node1 shares]$ ls -lrt
-rw-rw-r--. 1 harry sharegrp 0 Mar 21 06:03 harry
-rw-rw-r--. 1 natasha sharegrp 0 Mar 21 06:03 natasha
```

NEW QUESTION 15

CORRECT TEXT

Create a 512M partition, make it as ext4 file system, mounted automatically under /mnt/data and which take effect automatically at boot-start.

- A. Mastered
- B. Not Mastered

Answer: A

Explanation:

```
# fdisk /dev/vda
n
+512M
w
# partprobe /dev/vda
# mkfs -t ext4 /dev/vda5
# mkdir -p /data
# vim /etc/fstab
/dev/vda5 /data ext4 defaults 0 0
# mount -a
```

NEW QUESTION 20

CORRECT TEXT

Configure the permissions of /var/tmp/fstab

Copy the file /etc/fstab to /var/tmp/fstab. Configure the permissions of /var/tmp/fstab so that:

the file /var/tmp/fstab is owned by the root user.

the file /var/tmp/fstab belongs to the group root.

the file /var/tmp/fstab should not be executable by anyone.

the user natasha is able to read and write /var/tmp/fstab.

the user harry can neither write nor read /var/tmp/fstab.

all other users (current or future) have the ability to read /var/tmp/fstab.

- A. Mastered
- B. Not Mastered

Answer: A

Explanation:

```
? cp -a /etc/fstab /var/tmp
? cd /var/tmp
? ls -l
? getfacl /var/tmp/fstab
? chmod ugo-x /var/tmp/fstab
[ No need to do this, there won't be execute permission for the file by default]
# setfacl -m u:natasha:rw /var/tmp/fstab # setfacl -m u:harry:0 /var/tmp/fstab(zero) [Read permission will be there for all the users, by default. Check it using ls -l /var/tmp/fstab] Verify by [ ls -la /var/tmp/fstab]
```

NEW QUESTION 23

CORRECT TEXT

Part 1 (on Node1 Server)

Task 16 [Running Containers]

Configure your host journal to store all journal across reboot

Copy all journal files from /var/log/journal/ and put them in the /home/shangrila/container- logserver

Create and mount /home/shangrila/container-logserver as a persistent storage to the container as /var/log/ when container start

- A. Mastered
- B. Not Mastered

Answer: A

Explanation:

*

```
[shangrila@node1 ~]$ podman ps
CONTAINER ID IMAGE COMMAND CREATED STATUS PORTS NAMES
d5ffe018a53c registry.domain15.example.com:5000/rhel8/rsyslog:latest /bin/rsyslog.sh 5 seconds ago Up 4 seconds ago logserver
[shangrila@node1 ~]$ podman stats logserver
Error: stats is not supported in rootless mode without cgroups v2
[shangrila@node1 ~]$ podman stop logserver d5ffe018a53ca7eb075bf560d1f30822ab6fe51eba58fd1a8f370eda79806496
[shangrila@node1 ~]$ podman rm logserver
Error: no container with name or ID logserver found: no such container
[shangrila@node1 ~]$ mkdir -p container-journal/
*

[shangrila@node1 ~]$ sudo systemctl restart systemd-journald
[sudo] password for shangrila:
[shangrila@node1 ~]$ sudo cp -av /var/log/journal/* container-journal/
[shangrila@node1 ~]$ sudo cp -av /var/log/journal/* container-journal/
[shangrila@node1 ~]$ sudo chown -R shangrila container-journal/
[shangrila@node1 ~]$ podman run -d --name logserver -v /home/shangrila/container- journal:/var/log/journal:Z registry.domain15.example.com:5000/rhel8/rsyslog
[shangrila@node1 ~]$ podman ps
[shangrila@node1 ~]$ loginctl enable-linger
[shangrila@node1 ~]$ loginctl show-user shangrila|grep -i linger
Linger=yes
*

[shangrila@node1 ~]$ podman stop logserver
[shangrila@node1 ~]$ podman rm logserver
[shangrila@node1 ~]$ systemctl --user daemon-reload
[shangrila@node1 ~]$ systemctl --user enable --now container-logserver
[shangrila@node1 ~]$ podman ps
CONTAINER ID IMAGE COMMAND CREATED STATUS PORTS NAMES
3903e1d09170 registry.domain15.example.com:5000/rhel8/rsyslog:latest /bin/rsyslog.sh 4
seconds ago Up 4 seconds ago logserver
[shangrila@node1 ~]$ systemctl --user stop container-logserver.service
*

[shangrila@node1 ~]$ sudo reboot
[shangrila@node1 ~]$ podman ps -a
CONTAINER ID IMAGE COMMAND CREATED STATUS PORTS NAMES
7e6cd59c506a registry.domain15.example.com:5000/rhel8/rsyslog:latest /bin/rsyslog.sh 10 seconds ago Up 9 seconds ago logserver
```

NEW QUESTION 28

CORRECT TEXT

Configure your Host Name, IP Address, Gateway and DNS.

Host name: dtop5.dn.ws.com

IP Address: 172.28.10.5/4

Gateway: 172.28.10.1

DNS: 172.28.10.1

- A. Mastered
- B. Not Mastered

Answer: A

Explanation:

? Configure Host Name

? vim /etc/sysconfig/network NETWORKING=yes HOSTNAME=dtop5.dn.ws.com GATEWAY=172.28.10.1

* 2. Configure IP Address, Gateway and DNS

Configure the network by Network Manager:

Editing System eth0

Connection name: System eth0

☒ Connect automatically

Wired 802.1x Security IPv4 Settings IPv6 Settings

Method: Manual

Addresses

Address	Netmask	Gateway
172.28.10.5	255.255.255.0	172.28.10.1

DNS servers: 172.28.10.1

Search domains: dn.ws.com

DHCP client ID:

☒ Require IPv4 addressing for this connection to complete

Routes...

☒ Available to all users

Cancel Apply...

Note: Please remember to choose two options:

? Connect automatically

? Available to all users

Click "Apply", save and exit, and restart your network services:

Service network restart

* 3. Validate these profiles:

a) Check gateway: # vim / etc / sysconfig / network

NETWORKING=yes

HOSTNAME=dtop5.dn.ws.com

GATEWAY=172.28.10.1

b) Check Host Name: # vim /etc/hosts

172.28.10.5 dtop5.dn.ws.com dtop5 # Added by NetworkManager

127.0.0.1 localhost.localdomain localhost

::1 dtop.dn.ws.com dtop5 localhost6.localdomain6 localhost6

c) Check DNS: # vim /etc/resolv.conf

Generated by NetworkManager

Search dn.ws.com

Nameserver 172.28.10.1

d) Check Gateway: # vim /etc/sysconfig/network-scripts/ifcfg-eth0

```
DEVICE="eth0"
NM_CONTROLLED="yes"
ONBOOT=yes
TYPE=Ethernet
BOOTPROTO=none
IPADDR=172.28.10.5
PREFIX=24
GATEWAY=172.28.10.1
DNS1=172.28.10.1
DOMAIN=dn.ws.com
DEFROUTE=yes
IPV4_FAILURE_FATAL=yes
IPV6INIT=no
NAME="System eth0"
UUID=5fb06bd0-0bb0-7ffb-45f1-d6edd65f3e03
HWADDR=00:0c:29:0E:A6:C8
```

NEW QUESTION 31

CORRECT TEXT

Make on /archive directory that only the user owner and group owner member can fully access.

- A. Mastered
- B. Not Mastered

Answer: A

Explanation:

? chmod 770 /archive

? Verify using : ls -ld /archive Preview should be like:

drwxrwx--- 2 root sysuser 4096 Mar 16 18:08 /archive

To change the permission on directory we use the chmod command. According to the question that only the owner user (root) and group member (sysuser) can fully access the directory so: chmod 770 /archive

NEW QUESTION 33

CORRECT TEXT

Part 2 (on Node2 Server)

Task 8 [Tuning System Performance]

Set your server to use the recommended tuned profile

- A. Mastered
- B. Not Mastered

Answer: A

Explanation:

[root@node2 ~]# tuned-adm list

[root@node2 ~]# tuned-adm active

Current active profile: virtual-guest

[root@node2 ~]# tuned-adm recommend

virtual-guest

[root@node2 ~]# tuned-adm profile virtual-guest

[root@node2 ~]# tuned-adm active

Current active profile: virtual-guest

[root@node2 ~]# reboot

[root@node2 ~]# tuned-adm active

Current active profile: virtual-guest

NEW QUESTION 38

CORRECT TEXT

Create a volume group, and set 8M as a extends. Divided a volume group containing 50 extends on volume group lv (lvshare), make it as ext4 file system, and mounted automatically under /mnt/data. And the size of the floating range should set between 380M and 400M.

- A. Mastered
- B. Not Mastered

Answer: A

Explanation:

fdisk

partprobe

pvcreate /dev/vda6

vgcreate -s 8M vg1 /dev/vda6 -s

```
# lvcreate -n lvshare -l 50 vg1 -l
# mkfs.ext4 /dev/vg1/lvshare
# mkdir -p /mnt/data
# vim /etc/fstab
/dev/vg1/lvshare /mnt/data ext4 defaults 0 0
# mount -a
# df -h
```

NEW QUESTION 42

CORRECT TEXT

Create the user named eric and deny to interactive login.

- A. Mastered
- B. Not Mastered

Answer: A

Explanation:

```
? useradd eric
```

```
? passwd eric
```

```
? vi /etc/passwd
```

```
? eric:x:505:505::/home/eric:/sbin/nologin
```

Which shell or program should start at login time is specified in /etc/passwd file? By default, Redhat Enterprise Linux assigns the /bin/bash shell to the users. To deny the interactive login, you should write /sbin/nologin or /bin/ false instead of login shell.

NEW QUESTION 43

CORRECT TEXT

Configure a default software repository for your system.

One YUM has already provided to configure your system on [http://server.domain11.example.com/pub/ x86_64/Server](http://server.domain11.example.com/pub/x86_64/Server), and can be used normally.

- A. Mastered
- B. Not Mastered

Answer: A

Explanation:

Yum-config-manager --add-repo=<http://content.example.com/rhel7.0/x86-64/dvd>" is to generate a file `vim content.example.com_rhel7.0_x86_64_dvd.repo`, Add a line `gpgcheck=0`

`Yumcleanall`

`Yumrepolist`

Almost 4305 packages are right, Wrong Yum Configuration will lead to some following questions cannot be worked out.

NEW QUESTION 46

CORRECT TEXT

Add users: user2, user3.

The Additional group of the two users: user2, user3 is the admin group Password: redhat

- A. Mastered
- B. Not Mastered

Answer: A

Explanation:

```
# useradd -G admin user2
```

```
# useradd -G admin user3
```

```
# passwd user2
```

```
redhat
```

```
# passwd user3
```

```
redhat
```

NEW QUESTION 50

CORRECT TEXT

Create a 2G swap partition which take effect automatically at boot-start, and it should not affect the original swap partition.

- A. Mastered
- B. Not Mastered

Answer: A

Explanation:

```
# fdisk /dev/sda
```

```
p
```

```
(check Partition table)
```

```
n
```

(create new partition: press e to create extended partition, press p to create the main partition, and the extended partition is further divided into logical partitions)

```
Enter
```

```
+2G
```

```
t l
```

```
W
```



```
partx -a /dev/sda
partprobe
mkswap /dev/sda8
Copy UUID
swapon -a
vim /etc/fstab
UUID=XXXXX swap swap defaults 0 0 (swapon -s)
```

NEW QUESTION 53

CORRECT TEXT

Some users home directory is shared from your system. Using showmount -e localhost command, the shared directory is not shown. Make access the shared users home directory.

- A. Mastered
- B. Not Mastered

Answer: A

Explanation:

```
? Verify the File whether Shared or not ? : cat /etc/exports
? Start the nfs service: service nfs start
? Start the portmap service: service portmap start
? Make automatically start the nfs service on next reboot: chkconfig nfs on
? Make automatically start the portmap service on next reboot: chkconfig portmap on
? Verify either sharing or not: showmount -e localhost
? Check that default firewall is running on system?
If running flush the iptables using iptables -F and stop the iptables service.
```

NEW QUESTION 55

CORRECT TEXT

Configure autofs to automount the home directories of LDAP users as follows: host.domain11.example.com NFS-exports /home to your system.
This filesystem contains a pre-configured home directory for the user ldapuser11 ldapuser11's home directory is host.domain11.example.com /rhome/ldapuser11
ldapuser11's home directory should be automounted locally beneath /rhome as
/rhome/ldapuser11
Home directories must be writable by their users ldapuser11's password is 'password'.

- A. Mastered
- B. Not Mastered

Answer: A

Explanation:

```
? vim /etc/auto.master /rhome /etc/auto.misc
wq!
# vim /etc/auto.misc
ldapuser11 --rw,sync host.domain11.example.com:/rhome/ldpauser11 :wq!
#service autofs restart
? service autofs reload
? chkconfig autofs on
? su -ldapuser11
Login ldapuser with home directory
# exit
```

NEW QUESTION 56

CORRECT TEXT

Create a collaborative directory/home/admins with the following characteristics: Group ownership of /home/admins is adminuser
The directory should be readable, writable, and accessible to members of adminuser, but not to any other user. (It is understood that root has access to all files and directories on the system.)
Files created in /home/admins automatically have group ownership set to the adminuser group

- A. Mastered
- B. Not Mastered

Answer: A

Explanation:

```
mkdir /home/admins
chgrp -R adminuser /home/admins
chmodg+w /home/admins
chmodg+s /home/admins
```

NEW QUESTION 57

CORRECT TEXT

Configure your web services, download from <http://instructor.example.com/pub/serverX.html> And the services must be still running after system rebooting.

- A. Mastered
- B. Not Mastered

Answer: A

Explanation:

```
cd /var/www/html
wget http://instructor.example.com/pub/serverX.html mv serverX.html index.html
/etc/init.d/httpd restart
chkconfig httpd on
```

NEW QUESTION 60

CORRECT TEXT

Change the logical volume capacity named vo from 190M to 300M. and the size of the floating range should set between 280 and 320. (This logical volume has been mounted in advance.)

- A. Mastered
- B. Not Mastered

Answer: A

Explanation:

```
# vgdisplay
(Check the capacity of vg, if the capacity is not enough, need to create pv , vgextend , lvextend)
# lvdisplay (Check lv)
# lvextend -L +110M /dev/vg2/lv2
# resize2fs /dev/vg2/lv2
mount -a
(Verify)
```

```
(Decrease lvm)
# umount /media
# fsck -f /dev/vg2/lv2
# resize2fs -f /dev/vg2/lv2 100M
# lvreduce -L 100M /dev/vg2/lv2
# mount -a
# lvdisplay (Verify) OR
# e2fsck -f /dev/vg1/lvm02
# resize2fs -f /dev/vg1/lvm02
# mount /dev/vg1/lvm01 /mnt
# lvreduce -L 1G -n /dev/vg1/lvm02
# lvdisplay (Verify)
```

NEW QUESTION 65

CORRECT TEXT

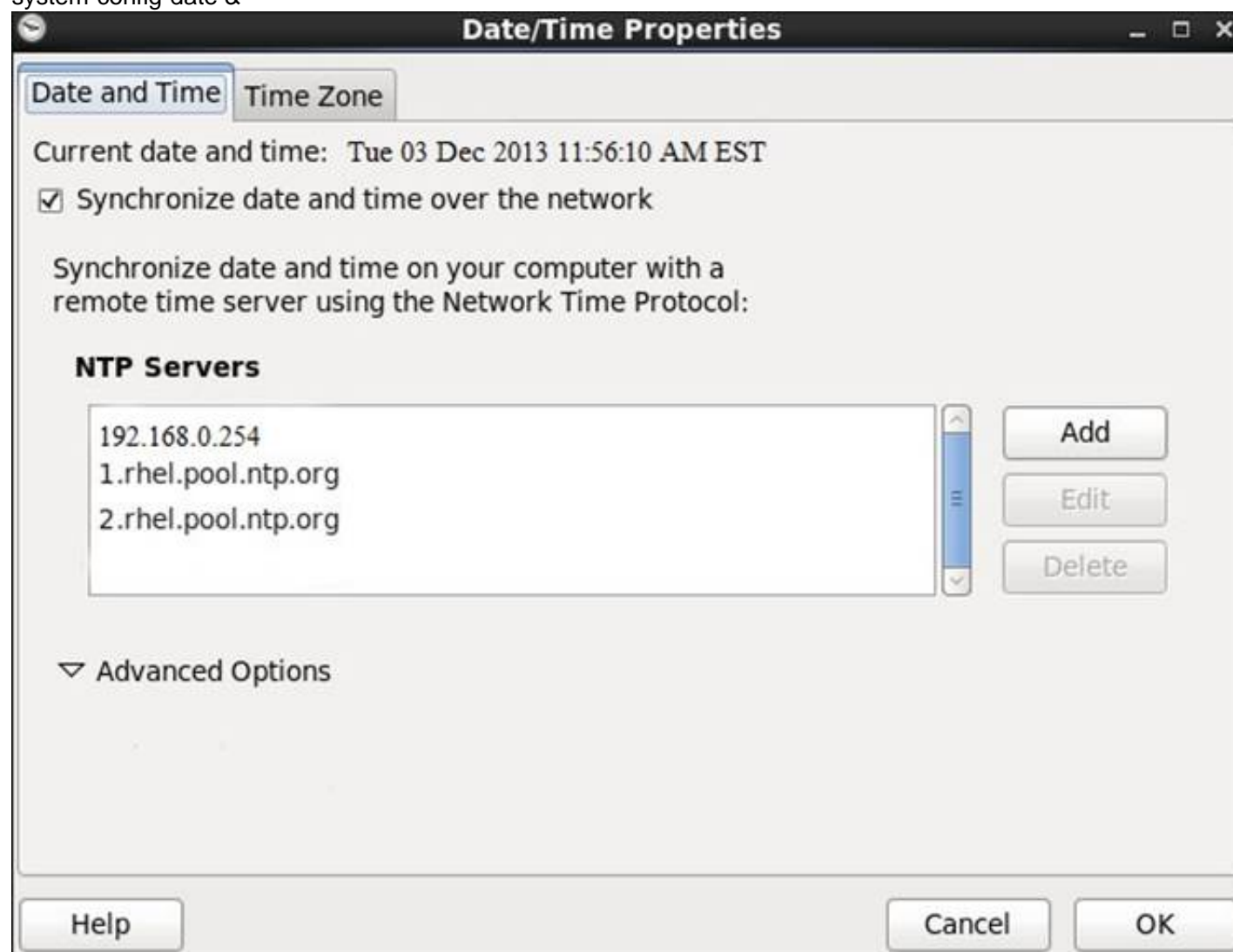
Configure the NTP service in your system.

- A. Mastered
- B. Not Mastered

Answer: A

Explanation:

system-config-date &



NEW QUESTION 67

CORRECT TEXT

Create a catalog under /home named admins. Its respective group is requested to be the admin group. The group users could read and write, while other users are not allowed to access it. The files created by users from the same group should also be the admin group.

- A. Mastered
- B. Not Mastered

Answer: A

Explanation:

```
# cd /home/  
# mkdir admins /  
# chown .admin admins/  
# chmod 770 admins/  
# chmod g+s admins/
```

NEW QUESTION 71

CORRECT TEXT

Create a user alex with a userid of 3400. The password for this user should be redhat.

- A. Mastered
- B. Not Mastered

Answer: A

Explanation:

```
? useradd -u 3400 alex  
? passwd alex  
? su -alex
```

NEW QUESTION 74

CORRECT TEXT

Configure autofs.

Configure the autofs automatically mount to the home directory of LDAP, as required: server.domain11.example.com use NFS to share the home to your system.

This file system

contains a pre

configured home directory of user ldapuserX. Home directory of ldapuserX is:

server.domain11.example.com /home/guests/ldapuser

Home directory of ldapuserX should automatically mount to the ldapuserX of the local

/home/guests Home directory's write permissions must be available for users ldapuser1's password is password

- A. Mastered
- B. Not Mastered

Answer: A

Explanation:

```
yum install -y autofs  
mkdir /home/rehome  
? /etc/auto.master  
/home/rehome/etc/auto.ldap  
Keep then exit  
cp /etc/auto.misc /etc/auto.ldap  
? /etc/auto.ldap  
ldapuserX -fstype=nfs,rw server.domain11.example.com:/home/guests/  
Keep then exit  
systemctl start autofs  
systemctl enable autofs  
su - ldapuserX// test
```

If the above solutions cannot create files or the command prompt is -bash-4.2\$, it maybe exist multi-level directory, this needs to change the server.domain11.example.com:/home/guests/ to server.domain11.example.com:/home/guests/ldapuserX. What is multi-level directory? It means there is a directory of ldapuserX under the /home/guests/ldapuserX in the questions. This directory is the real directory.

NEW QUESTION 79

CORRECT TEXT

Configure a cron Task.

User natasha must configure a cron job, local time 14:23 runs and executes: */bin/echo hiya every day.

- A. Mastered
- B. Not Mastered

Answer: A

Explanation:

```
crontab -e -u natasha  
23 14/bin/echo hiya  
crontab -l -u natasha // view  
systemctl enable crond
```

systemctl restart crond

NEW QUESTION 82

CORRECT TEXT

Part 1 (on Node1 Server)

Task 2 [Installing and Updating Software Packages]

Configure your system to use this location as a default repository: <http://utility.domain15.example.com/BaseOS> <http://utility.domain15.example.com/AppStream>

Also configure your GPG key to use this location <http://utility.domain15.example.com/RPM-GPG-KEY-redhat-release>

- A. Mastered
- B. Not Mastered

Answer: A

Explanation:

```
* [root@node1 ~]# vim /etc/yum.repos.d/redhat.repo
[BaseOS]
name=BaseOS
baseurl=http://utility.domain15.example.com/BaseOS
enabled=1
gpgcheck=1
gpgkey=http://utility.domain15.example.com/RPM-GPG-KEY-redhat-release
[AppStream]
name=AppStream
baseurl=http://utility.domain15.example.com/AppStream
enabled=1
gpgcheck=1
gpgkey=http://utility.domain15.example.com/RPM-GPG-KEY-redhat-release
[root@node1 ~]# yum clean all
[root@node1 ~]# yum repolist
[root@node1 ~]# yum list all
```

NEW QUESTION 85

CORRECT TEXT

/data Directory is shared from the server1.example.com server. Mount the shared directory that:

- * a. when user try to access, automatically should mount
- * b. when user doesn't use mounted directory should unmount automatically after 50 seconds.
- * c. shared directory should mount on /mnt/data on your machine.

- A. Mastered
- B. Not Mastered

Answer: A

Explanation:

```
* 1. vi /etc/auto.master
/mnt /etc /auto.misc --timeout=50
? vi /etc/auto.misc
? data -rw,soft,intr server1.example.com:/data
? service autofs restart
? chkconfig autofs on
```

When you mount the other filesystem, you should unmount the mounted filesystem, Automount feature of linux helps to mount at access time and after certain seconds, when user unaccess the mounted directory, automatically unmount the filesystem.

/etc/auto.master is the master configuration file for autofs service. When you start the service, it reads the mount point as defined in /etc/auto.master.

NEW QUESTION 89

CORRECT TEXT

You have a domain named www.rhce.com associated IP address is 192.100.0.2. Configure the Apache web server by implementing the SSL for encryption communication.

- A. Mastered
- B. Not Mastered

Answer: A

Explanation:

```
? vi /etc/httpd/conf.d/ssl.conf <VirtualHost 192.100.0.2> ServerName www.rhce.com
DocumentRoot /var/www/rhce DirectoryIndex index.html index.htm ServerAdmin
webmaster@rhce.com SSLEngine on SSLCertificateFile
/etc/httpd/conf/ssl.crt/server.crt SSLCertificateKeyFile
/etc/httpd/conf/ssl.key/server.key </VirtualHost>
? cd /etc/httpd/conf
3 make testcert
? Create the directory and index page on specified path. (Index page can download from ftp://server1.example.com at exam time)
? service httpd start|restart
? chkconfig httpd on
```

Apache can provide encrypted communications using SSL (Secure Socket Layer). To make use of encrypted communication, a client must request to https protocol, which is uses port 443. For HTTPS protocol required the certificate file and key file.

NEW QUESTION 92

CORRECT TEXT

Create a Shared Directory.

Create a shared directory /home/admins, make it has the following characteristics:

/home/admins belongs to group adminuser

This directory can be read and written by members of group adminuser Any files created in /home/ admin, group automatically set as adminuser.

A. Mastered

B. Not Mastered

Answer: A

Explanation:

mkdir /home/admins

chgrp -R adminuser /home/admins

chmodg+w /home/admins

chmodg+s /home/admins

NEW QUESTION 93

CORRECT TEXT

One Package named zsh is dump on ftp://server1.example.com under /pub/updates directory and your FTP server is 192.168.0.254. Install the package zsh.

A. Mastered

B. Not Mastered

Answer: A

Explanation:

? rpm -ivh ftp://server1.example.com/pub/updates/zsh-* or

? Login to ftp server : ftp ftp://server1.example.com using anonymous user.

? Change the directory: cd pub and cd updates

? Download the package: mget zsh-*

? Quit from the ftp prompt : bye

? Install the package

? rpm -ivh zsh-*

? Verify either package is installed or not : rpm -q zsh

NEW QUESTION 98

CORRECT TEXT

User mary must configure a task.

Requirement: The local time at 14:23 every day echo "Hello World.".

A. Mastered

B. Not Mastered

Answer: A

Explanation:

crontab -u mary -e

23 14 * * * echo "Hello World."

NEW QUESTION 102

CORRECT TEXT

Part 1 (on Node1 Server)

Task 13 [Archiving and Transferring Files & SELinux]

Create a backup file named /root/backup.tar.bz2. The backup file should contain the content of /usr/local and should be zipped with bzip2 compression format.

Furthermore, ensure SELinux is in enforcing mode. If it is not, change SELinux to enforcing mode.

A. Mastered

B. Not Mastered

Answer: A

Explanation:

*

[root@node1 ~]# tar cvf /root/backup.tar /usr/local/

tar: Removing leading `/' from member names

/usr/local/

/usr/local/bin/

/usr/local/etc/ [root@node1 ~]# ls

backup.tar

[root@node1 ~]# file backup.tar

backup.tar: POSIX tar archive (GNU)

[root@node1 ~]# bzip2 backup.tar

[root@node1 ~]# ls

backup.tar.bz2

[root@node1 ~]# file backup.tar.bz2

backup.tar.bz2: bzip2 compressed data, block size = 900k

•


```
[root@node1 ~]# sestatus
SELinux status: enabled
[root@node1 ~]# cat /etc/selinux/config
SELINUX=enforcing
SELINUXTYPE=targeted
[root@node1 ~]# reboot
### For Checking ###
[root@node1 ~]# sestatus
SELinux status: enabled
```

NEW QUESTION 103

CORRECT TEXT

Create a backup file named /root/backup.tar.bz2, which contains the contents of /usr/local, bar must use the bzip2 compression.

- A. Mastered
- B. Not Mastered

Answer: A

Explanation:

```
cd /usr/local
tar -jcvf /root/backup.tar.bz2*
mkdir /test
tar -jxvf /root/backup.tar.bz2 -C /test/
```

NEW QUESTION 105

CORRECT TEXT

A YUM source has been provided in the <http://instructor.example.com/pub/rhel6/dvd> Configure your system and can be used normally.

- A. Mastered
- B. Not Mastered

Answer: A

Explanation:

```
? /etc/yum.repos.d/base.repo
[base] name=base
baseurl=http://instructor.example.com/pub/rhel6/dvd
gpgcheck=0
yum list
```

NEW QUESTION 108

CORRECT TEXT

Configure the system synchronous as 172.24.40.10.

- A. Mastered
- B. Not Mastered

Answer: A

Explanation:

Graphical Interfaces:
System-->Administration-->Date & Time
OR
system-config-date

NEW QUESTION 110

CORRECT TEXT

Part 1 (on Node1 Server)

Task 7 [Accessing Linux File Systems]

Find all the files owned by user natasha and redirect the output to /home/alex/files.

Find all files that are larger than 5MiB in the /etc directory and copy them to /find/largefiles.

- A. Mastered
- B. Not Mastered

Answer: A

Explanation:

```
[root@node1 ~]# find / -name natasha -type f > /home/natasha/files
[root@node1 ~]# cat /home/natasha/files
/var/spool/mail/natasha
/mnt/shares/natasha
[root@node1 ~]# mkdir /find
[root@node1 ~]# find /etc -size +5M > /find/largefiles
[root@node1 ~]# cat /find/largefiles
/etc/selinux/targeted/policy/policy.31
/etc/udev/hwdb.bin
```

NEW QUESTION 111

CORRECT TEXT

Part 1 (on Node1 Server)

Task 3 [Managing Local Users and Groups]

Create the following users, groups and group memberships: A group named sharegrp

A user harry who belongs to sharegrp as a secondary group

A user natasha who also belongs to sharegrp as a secondary group

A user copper who does not have access to an interactive shell on the system and who is not a member of sharegrp.

harry, natasha and copper should have the password redhat

A. Mastered

B. Not Mastered

Answer: A

Explanation:

```
* [root@node1 ~]# groupadd sharegrp
[root@node1 ~]# useradd harry
[root@node1 ~]# useradd natasha
[root@node1 ~]# usermod -aG sharegrp harry
[root@node1 ~]# usermod -aG sharegrp natasha
[root@node1 ~]# useradd -s /sbin/nologin copper
[root@node1 ~]# echo "redhat" | passwd --stdin harry
[root@node1 ~]# echo "redhat" | passwd --stdin natasha
[root@node1 ~]# echo "redhat" | passwd --stdin copper
### For Checking ###
[root@node1 ~]# su - copper
This account is currently not available.
[root@node1 ~]# su - natasha
[root@node1 ~]# id
[root@node1 ~]# su - harry
[root@node1 ~]# id
```

NEW QUESTION 112

CORRECT TEXT

Configure a task: plan to run echo "file" command at 14:23 every day.

A. Mastered

B. Not Mastered

Answer: A

Explanation:

(a) Created as administrator

```
# crontab -u natasha -e
```

```
23 14 * * * /bin/echo "file"
```

(b)Created as natasha

```
# su - natasha
```

```
$ crontab -e
```

```
23 14 * * * /bin/echo "file"
```

NEW QUESTION 113

CORRECT TEXT

Part 2 (on Node2 Server)

Task 1 [Controlling the Boot Process]

Interrupt the boot process and reset the root password. Change it to kexdrams to gain access to the system

A. Mastered

B. Not Mastered

Answer: A

Explanation:

*

* 1. Reboot the server pressing by Ctrl+Alt+Del

* 2. When the boot-loader menu appears, press the cursor keys to highlight the default boot- loader entry

* 3. Press e to edit the current entry.

* 4. Use the cursor keys to navigate to the line that starts with linux.

* 5. Press End to move the cursor to the end of the line.

* 6. Append rd.break to the end of the line.

* 7. Press Ctrl+x to boot using the modified configuration.

* 8. At the switch_root prompt

*

```
switch_root:/# mount -o remount,rw /sysroot
```

```
switch_root:/# chroot /sysroot
```

```
sh-4.4# echo kexdrams | passwd --stdin root
```

Changing password for user root.

passwd: all authentication tokens updated successfully.

```
sh-4.4# touch /.autorelabel
```

```
sh-4.4# exit; exit
```

*

Type exit twice to continue booting your system as usual.

NEW QUESTION 114

CORRECT TEXT

According the following requirements, configure autofs service and automatically mount to user's home directory in the ldap domain.

- Instructor.example.com (192.168.0.254) has shared /home/guests/ldapuserX home directory to your system by over NFS export, X is your hostname number.
- LdapuserX's home directory is exist in the instructor.example.com: /home/ guests/ldapuserX
- LdapuserX's home directory must be able to automatically mount to /home/ guests/ldapuserX in your system.
- Home directory have write permissions for the corresponding user.

However, you can log on to the ldapuser1 - ldapuser99 users after verification. But you can only get your corresponding ldapuser users. If your system's hostname is server1.example.com, you can only get ldapuser1's home directory.

- A. Mastered
- B. Not Mastered

Answer: A

Explanation:

```
mkdir -p /home/guests
cat /etc/auto.master:
/home/guests /etc/auto.ldap
cat /etc/auto.ldap:
ldapuser1 -rw instructor.example.com:/home/guests/ldapuser1
? automatically mount all the user's home directory #* -rw
instructor.example.com:/home/guests/&
```

NEW QUESTION 116

CORRECT TEXT

There are two different networks, 192.168.0.0/24 and 192.168.1.0/24. Your System is in 192.168.0.0/24 Network. One RHEL6 Installed System is going to use as a Router. All required configuration is already done on Linux Server. Where 192.168.0.254 and 192.168.1.254 IP Address are assigned on that Server. How will make successfully ping to 192.168.1.0/24 Network's Host?

- A. Mastered
- B. Not Mastered

Answer: A

Explanation:

```
? vi /etc/sysconfig/network GATEWAY=192.168.0.254
OR
vi /etc/sysconf/network-scripts/ifcfg-eth0 DEVICE=eth0
BOOTPROTO=static
ONBOOT=yes
IPADDR=192.168.0.?
NETMASK=255.255.255.0
GATEWAY=192.168.0.254
? service network restart
Gateway defines the way to exit the packets. According to question System working as a router for two networks have IP Address 192.168.0.254 and 192.168.1.254.
```

NEW QUESTION 118

CORRECT TEXT

Part 1 (on Node1 Server)

Task 14 [Managing SELinux Security]

You will configure a web server running on your system serving content using a non- standard port (82)

- A. Mastered
- B. Not Mastered

Answer: A

Explanation:

*

```
[root@node1 ~]# curl http://node1.domain15.example.com
curl: (7) Failed to connect to node1.domain15.example.com port 80: Connection refused
[root@node1 ~]# yum install httpd
[root@node1 ~]# systemctl enable --now httpd
Created symlink /etc/systemd/system/multi-user.target.wants/httpd.service
/usr/lib/systemd/system/httpd.service.
[root@node1 ~]# systemctl start httpd
[root@node1 ~]# systemctl status httpd
Status: "Running, listening on: port 80"
```

*

```
[root@node1 ~]# wget http://node1.domain15.example.com
2021-03-23 13:27:28 ERROR 403: Forbidden.
[root@node1 ~]# semanage port -l | grep http
http_port_t tcp 80, 81, 443, 488, 8008, 8009, 8443, 9000
[root@node1 ~]# semanage port -a -t http_port_t -p tcp 82
[root@node1 ~]# semanage port -l | grep http
http_port_t tcp 82, 80, 81, 443, 488, 8008, 8009, 8443, 9000
```

```
[root@node1 ~]# firewall-cmd --zone=public --list-all
[root@node1 ~]# firewall-cmd --permanent --zone=public --add-port=82/tcp
[root@node1 ~]# firewall-cmd --reload
[root@node1 ~]# curl http://node1.domain15.example.com
OK
*

root@node1 ~]# wget http://node1.domain15.example.com:82
Connection refused.
[root@node1 ~]# vim /etc/httpd/conf/httpd.conf Listen 82
[root@node1 ~]# systemctl restart httpd
[root@node1 ~]# wget http://node1.domain15.example.com:82
2021-03-23 13:31:41 ERROR 403: Forbidden.
[root@node1 ~]# curl http://node1.domain15.example.com:82
OK
```

NEW QUESTION 120

CORRECT TEXT

A YUM repository has been provided at http://server.domain11.example.com/pub/x86_64/Server.
Configure your system to use this location as a default repository.

- A. Mastered
- B. Not Mastered

Answer: A

Explanation:

```
vim/etc/yum.repos/base.repo
[base]
name=base
baseurl= http://server.domain11.example.com/pub/x86_64/Server
gpgcheck=0
enable=1
Save and Exit
Use yum list for validation, the configuration is correct if list the package information. If the Yum configuration is not correct then maybe cannot answer the following questions.
```

NEW QUESTION 124

CORRECT TEXT

Part 1 (on Node1 Server)

Task 11 [Scheduling Future Tasks]

The user natasha must configure a cron job that runs daily at 14:23 local time and also the same cron job will run after every 2 minutes and executes:
/bin/echo hello

- A. Mastered
- B. Not Mastered

Answer: A

Explanation:

```
*

[root@node1 ~]# crontab -l -u natasha
no crontab for natasha
[root@node1 ~]# crontab -e -u natasha
23 14 * * * /bin/echo hello
*/2 * * * * /bin/echo 2min
crontab: installing new crontab
[root@node1 ~]# crontab -l -u natasha
23 14 * * * /bin/echo hello
*/2 * * * * /bin/echo 2min
[root@node1 ~]# systemctl status crond.service
*

### For Checking ###
[root@node1 ~]# tail -f /var/log/cron
Mar 23 13:23:48 node1 crontab[10636]: (root) REPLACE (natasha)
Mar 23 13:23:48 node1 crontab[10636]: (root) END EDIT (natasha)
Mar 23 13:23:50 node1 crontab[10638]: (root) LIST (natasha)
Mar 23 13:24:01 node1 crond[1349]: (root) FAILED (loading cron table)
Mar 23 13:24:02 node1 CROND[10673]: (natasha) CMD (/bin/echo 2min)
```

NEW QUESTION 127

CORRECT TEXT

Part 1 (on Node1 Server)

Task 10 [Configuring NTP/Time Synchronization]

Configure your system so that it is an NTP client of utility.domain15.example.com
The system time should be set to your (or nearest to you) timezone and ensure NTP sync is configured

- A. Mastered
- B. Not Mastered

Answer: A

Explanation:

*

```
[root@node1 ~]# yum install chrony
[root@node1 ~]# vim /etc/chrony.conf
pool utility.domain15.example.com iburst
[root@node1 ~]# systemctl enable chronyd
[root@node1 ~]# systemctl restart chronyd
[root@node1 ~]# systemctl status chronyd
[root@node1 ~]# tzselect
Please identify a location so that time zone rules can be set correctly.
Please select a continent, ocean, "coord", or "TZ".
```

```
1) Africa
2) Americas
3) Antarctica
4) Asia
11) TZ - I want to specify the time zone using the Posix TZ format.
```

```
#? 4
```

*

Please select a country whose clocks agree with yours.

```
1) Afghanistan 18) Israel 35) Palestine
2) Armenia 19) Japan 36) Philippines
3) Azerbaijan 20) Jordan 37) Qatar
4) Bahrain 21) Kazakhstan 38) Russia
5) Bangladesh 22) Korea (North) 39) Saudi Arabia
```

```
#? 5
```

The following information has been given: Bangladesh

Therefore TZ='Asia/Dhaka' will be used. Is the above information OK?

```
1) Yes
```

```
2) No
```

```
#? 1
```

Asia/Dhaka

```
[root@node1 ~]# chronyc sources -v
```

```
^? utility.domain15.example> 0 7 0 - +0ns[ +0ns] +/- 0ns
```

NEW QUESTION 130

CORRECT TEXT

Part 2 (on Node2 Server)

Task 2 [Installing and Updating Software Packages]

Configure your system to use this location as a default repository: <http://utility.domain15.example.com/BaseOS>

<http://utility.domain15.example.com/AppStream>

Also configure your GPG key to use this location <http://utility.domain15.example.com/RPM-GPG-KEY-redhat-release>

A. Mastered

B. Not Mastered

Answer: A

Explanation:

```
[root@node1 ~]# vim /etc/yum.repos.d/redhat.repo
[BaseOS]
name=BaseOS
baseurl=http://utility.domain15.example.com/BaseOS
enabled=1
gpgcheck=1
gpgkey=http://utility.domain15.example.com/RPM-GPG-KEY-redhat-release
[AppStream]
name=AppStream
baseurl=http://utility.domain15.example.com/AppStream
enabled=1
gpgcheck=1
gpgkey=http://utility.domain15.example.com/RPM-GPG-KEY-redhat-release
[root@node1 ~]# yum clean all
[root@node1 ~]# yum repolist
repo id repo name
AppStream AppStream
BaseOS BaseOS
[root@node1 ~]# yum list all
```

NEW QUESTION 135

CORRECT TEXT

Set cronjob for user natasha to do /bin/echo hiya at 14:23.

A. Mastered

B. Not Mastered

Answer: A

Explanation:

```
# crontab -e -u natasha
```



```
23 14 * * * /bin/echo hiya
wq!
```

NEW QUESTION 136

CORRECT TEXT

One Logical Volume named lv1 is created under vg0. The Initial Size of that Logical Volume is 100MB. Now you required the size 500MB. Make successfully the size of that Logical Volume 500M without losing any data. As well as size should be increased online.

- A. Mastered
- B. Not Mastered

Answer: A

Explanation:

The LVM system organizes hard disks into Logical Volume (LV) groups. Essentially, physical hard disk partitions (or possibly RAID arrays) are set up in a bunch of equal sized chunks known as Physical Extents (PE). As there are several other concepts associated with the LVM system, let's start with some basic definitions: Physical Volume (PV) is the standard partition that you add to the LVM mix. Normally, a physical volume is a standard primary or logical partition. It can also be a RAID array.

Physical Extent (PE) is a chunk of disk space. Every PV is divided into a number of equal sized PEs. Every PE in a LV group is the same size. Different LV groups can have different sized PEs.

Logical Extent (LE) is also a chunk of disk space. Every LE is mapped to a specific PE. Logical Volume (LV) is composed of a group of LEs. You can mount a file system such as

/home and /var on an LV.

Volume Group (VG) is composed of a group of LVs. It is the organizational group for LVM. Most of the commands that you'll use apply to a specific VG.

? Verify the size of Logical Volume: `lvdisplay /dev/vg0/lv1`

? Verify the Size on mounted directory: `df -h` or `df -h` mounted directory name

? Use: `lvextend -L+400M /dev/vg0/lv1`

? `ext2online -d /dev/vg0/lv1` to bring extended size online.

? Again Verify using `lvdisplay` and `df -h` command.

NEW QUESTION 138

CORRECT TEXT

Configure autofs to make sure after login successfully, it has the home directory autofs, which is shared as /rhome/ldapuser40 at the ip: 172.24.40.10. and it also requires that, other ldap users can use the home directory normally.

- A. Mastered
- B. Not Mastered

Answer: A

Explanation:

```
# chkconfig autofs on
```

```
# cd /etc/
```

```
# vim /etc/auto.master
```

```
/rhome /etc/auto.ldap
```

```
# cp auto.misc auto.ldap
```

```
# vim auto.ldap
```

```
ldapuser40 -rw,soft,intr 172.24.40.10:/rhome/ldapuser40
```

```
* -rw,soft,intr 172.16.40.10:/rhome/&
```

```
# service autofs stop
```

```
# server autofs start
```

```
# showmount -e 172.24.40.10
```

```
# su - ldapuser40
```

NEW QUESTION 141

CORRECT TEXT

Part 1 (on Node1 Server)

Task 6 [Accessing Linux File Systems]

Find all lines in the file /usr/share/mime/packages/freedesktop.org.xml that contain the string ich.

Put a copy of these lines in the original order in the file /root/lines.

/root/lines should contain no empty lines and all lines must be exact copies of the original lines in

/usr/share/mime/packages/freedesktop.org.xml

- A. Mastered
- B. Not Mastered

Answer: A

Explanation:

```
*
```

```
[root@node1 ~]# cat /usr/share/mime/packages/freedesktop.org.xml | grep ich > /root/lines
```

```
[root@node1 ~]# cat /root/lines
```

```
<comment xml:lang="ast">Ficheru codificáu en BinHex de Machintosh</comment>
```

```
<comment xml:lang="fr">fichier codé Macintosh BinHex</comment>
```

```
<comment xml:lang="gl">ficheiro de Macintosh codificado con BinHex</comment>
```

```
<comment xml:lang="oc">fichièr encodat Macintosh BinHex</comment>
```

```
<comment xml:lang="pt">ficheiro codificado em BinHex de Macintosh</comment>
```

```
<comment xml:lang="fr">fichier boîte aux lettres</comment>
```

NEW QUESTION 142

CORRECT TEXT

Configure a user account.

Create a user iaruid is 3400. Password is redhat

- A. Mastered
- B. Not Mastered

Answer: A

Explanation:

```
useradd -u 3400 iar
passwd iar
```

NEW QUESTION 146

CORRECT TEXT

Who ever creates the files/directories on a data group owner should automatically be in the same group owner as data.

- A. Mastered
- B. Not Mastered

Answer: A

Explanation:

* 1. chmod g+s /data

* 2. Verify using: ls -ld /data

Permission should be like this: drwxrws--- 2 root sysadmin 4096 Mar 16 18:08 /data

If SGID bit is set on directory then who every users creates the files on directory group owner automatically the owner of parent directory. To set the SGID bit:

chmod g+s directory To Remove the SGID bit: chmod g-s directory

NEW QUESTION 151

CORRECT TEXT

Add admin group and set gid=600

- A. Mastered
- B. Not Mastered

Answer: A

Explanation:

```
# groupadd -g 600 admin
```

NEW QUESTION 154

CORRECT TEXT

Update the kernel from <ftp://instructor.example.com/pub/updates>. According the following requirements:

? The updated kernel must exist as default kernel after rebooting the system.

? The original kernel still exists and is available in the system.

- A. Mastered
- B. Not Mastered

Answer: A

Explanation:

```
rpm -ivh kernel-firm...
```

```
rpm -ivh kernel...
```

NEW QUESTION 157

CORRECT TEXT

You are new System Administrator and from now you are going to handle the system and your main task is Network monitoring, Backup and Restore. But you don't know the root password. Change the root password to redhat and login in default Runlevel.

- A. Mastered
- B. Not Mastered

Answer: A

Explanation:

When you Boot the System, it starts on default Runlevel specified in /etc/inittab: Id?:initdefault:

When System Successfully boot, it will ask for username and password. But you don't know the root's password. To change the root password you need to boot the system into single user mode. You can pass the kernel arguments from the boot loader.

* 1. Restart the System.

* 2. You will get the boot loader GRUB screen.

* 3. Press a and type 1 or s for single mode ro root=LABEL=/ rhgb quiet s

* 4. System will boot on Single User mode.

* 5. Use passwd command to change.

* 6. Press ctrl+d

NEW QUESTION 162

CORRECT TEXT

Configure iptables, there are two domains in the network, the address of local domain is 172.24.0.0/16 other domain is 172.25.0.0/16, now refuse domain 172.25.0.0/16 to access the server.

- A. Mastered
- B. Not Mastered

Answer: A

Explanation:

below

```
? iptables -F
? service iptables save
? iptables -A INPUT -s 172.25.0.0/16 -j REJECT
? service iptables save
? service iptables restart
```

NEW QUESTION 165

CORRECT TEXT

Part 1 (on Node1 Server)

Task 12 [Accessing Network-Attached Storage]

Configure autofs to automount the home directories of user remoteuserX. Note the following:

utility.domain15.example.com(172.25.15.9), NFS-exports /netdir to your system, where user is remoteuserX where X is your domain number

remoteuserX home directory is utility.domain15.example.com:/netdir/remoteuserX remoteuserX home directory should be auto mounted locally at /netdir as /netdir/remoteuserX

Home directories must be writable by their users while you are able to login as any of the remoteuserX only home directory that is accessible from your system

- A. Mastered
- B. Not Mastered

Answer: A

Explanation:

*

•

```
[root@host ~]#systemctl enable sssd.service
[root@host ~]#systemctl start sssd.service
[root@host ~]#getent passwd remoteuser15
[root@host ~]#yum install autofs
[root@host ~]#vim /etc/auto.master.d/home9.autofs
/netdir/remoteuser15 /etc/auto.home9
[root@host ~]#vim /etc/auto.home9
remoteuser15 -rw,sync utility.network15.example.com:/netdir/remoteuser15/&
[root@host ~]#systemctl enable autofs
[root@host ~]#systemctl restart autofs
[root@host ~]#su - remoteuser15
```

NEW QUESTION 169

CORRECT TEXT

Add a new logical partition having size 100MB and create the data which will be the mount point for the new partition.

- A. Mastered
- B. Not Mastered

Answer: A

Explanation:

```
* 1. Use fdisk /dev/hda-> To create new partition.
* 2. Type n ->For New partitions
* 3. It will ask for Logical or Primary Partitions. Press l for logical.
* 4. It will ask for the Starting Cylinder: Use the Default by pressing Enter Keys
* 5. Type the size: +100M you can specify either Last cylinder or size here.
* 6. Press P to verify the partitions lists and remember the partitions name.
* 7. Press w to write on partitions table.
* 8. Either Reboot or use partprobe command.
* 9. Use mkfs -t ext3 /dev/hda?
```

OR

```
* 1. mke2fs -j /dev/hda? ->To create ext3 filesystem.
* 2. vi /etc/fstab
* 3. Write:
/dev/hda? /data ext3 defaults 0 0
* 4. Verify by mounting on current sessions also: mount /dev/hda? /data
```

NEW QUESTION 172

CORRECT TEXT

SELinux must be running in the Enforcing mode.

- A. Mastered
- B. Not Mastered

Answer: A

Explanation:

```
getenforce // Check the current mode of SELinux // SELinux runs in enforcing mode // Check
getenforce 1
getenforce
vim /etc/selinux/config selinux=enforcing // To temporarily enable SELinux
wg
sestatus
```

NEW QUESTION 176

CORRECT TEXT

There is a local logical volumes in your system, named with shrink and belong to VGSRV volume group, mount to the /shrink directory. The definition of size is 320 MB.

Requirement:

Reduce the logical volume to 220 MB without any loss of data. The size is allowed between 200-260 MB after reducing.

- A. Mastered
- B. Not Mastered

Answer: A

Explanation:

```
cd;umount /shrink
e2fsck -f /dev/mapper/vgsrv-shrink
resize2fs /dev/mapper/vgsrv-shrink 220M
lvreduce -L 220M /dev/mapper/vgsrv-shrink
mount -a
```

NEW QUESTION 177

.....

THANKS FOR TRYING THE DEMO OF OUR PRODUCT

Visit Our Site to Purchase the Full Set of Actual EX200 Exam Questions With Answers.

We Also Provide Practice Exam Software That Simulates Real Exam Environment And Has Many Self-Assessment Features. Order the EX200 Product From:

<https://www.2passeasy.com/dumps/EX200/>

Money Back Guarantee

EX200 Practice Exam Features:

- * EX200 Questions and Answers Updated Frequently
- * EX200 Practice Questions Verified by Expert Senior Certified Staff
- * EX200 Most Realistic Questions that Guarantee you a Pass on Your FirstTry
- * EX200 Practice Test Questions in Multiple Choice Formats and Updatesfor 1 Year