

Exam Questions AZ-400

Microsoft Azure DevOps Solutions (beta)

<https://www.2passeasy.com/dumps/AZ-400/>



NEW QUESTION 1

HOTSPOT - (Topic 4)

HOTSPOT

You need to create deployment files for an Azure Kubernetes Service (AKS) cluster. The deployments must meet the provisioning storage requirements shown in the following table.

Deployment	Requirement
Deployment 1	Use files stored on an SMB-based share from the container's file system.
Deployment 2	Use files on a managed disk from the container's file system.
Deployment 3	Securely access X.509 certificates from the container's file system.

Which resource type should you use for each deployment? To answer, select the appropriate options in the answer area.

NOTE: Each correct selection is worth one point.

Deployment 1:

▼

azurekeyvault-flexvolume

blobfuse-flexvol

kubernetes.io/azure-disk

kubernetes.io/azure-file

volume.beta.kubernetes.io/storage-provisioner

Deployment 2:

▼

azurekeyvault-flexvolume

blobfuse-flexvol

kubernetes.io/azure-disk

kubernetes.io/azure-file

volume.beta.kubernetes.io/storage-provisioner

Deployment 3:

▼

azurekeyvault-flexvolume

blobfuse-flexvol

kubernetes.io/azure-disk

kubernetes.io/azure-file

volume.beta.kubernetes.io/storage-provisioner

- A. Mastered
- B. Not Mastered

Answer: A

Explanation:

Deployment 1: Kubernetes.io/azure-file

You can use Azure Files to connect using the Server Message Block (SMB) protocol. Deployment 2: Kubernetes.io/azure-disk

Deployment 3: azurekeyvault-flexvolume

azurekeyvault-flexvolume: Key Vault FlexVolume: Seamlessly integrate your key management systems with Kubernetes.

Secrets, keys, and certificates in a key management system become a volume accessible to pods. Once the volume is mounted, its data is available directly in the container filesystem for your application.

NEW QUESTION 2

FILL IN THE BLANK - (Topic 4)

You use Get for source control. You have an app named Appt.

In the main branch, you need to restore the third most recent revision of a file named App.exe.config .

How should you complete command?

git main

git restore main~3 App.exe.config

- A. Mastered
- B. Not Mastered

Answer: A

Explanation:

git checkout main
git restore --patch main~3 App.exe.config

NEW QUESTION 3

HOTSPOT - (Topic 4)

You have a project in Azure DevOps that includes two users named User1 and User2. You plan to use Azure Monitor to manage logs. You need to ensure that the users can perform the actions shown in following the table.

User	Action
User1	<ul style="list-style-type: none"> Create private monitoring dashboards. Search usage data for an Azure Monitor workspace.
User2	<ul style="list-style-type: none"> View autoscale settings. View alert activities and settings.

The solution must follow the principle of least privilege.

Which role should you assign to each user? To answer select the appropriate options in the answer area.

NOTE: Each correct selection is worth one point.

Answer Area

User1: Monitoring Contributor
Log Analytics Reader
Monitoring Contributor
Monitoring Metrics Publisher
Monitoring Reader

User2: Monitoring Reader
Log Analytics Reader
Monitoring Contributor
Monitoring Metrics Publisher
Monitoring Reader

- A. Mastered
B. Not Mastered

Answer: A

Explanation:

Answer Area

User1: Monitoring Contributor
Log Analytics Reader
Monitoring Contributor
Monitoring Metrics Publisher
Monitoring Reader

User2: Monitoring Reader
Log Analytics Reader
Monitoring Contributor
Monitoring Metrics Publisher
Monitoring Reader

NEW QUESTION 4

DRAG DROP - (Topic 4)

You need to recommend project metrics for dashboards in Azure DevOps.

Which chart widgets should you recommend for each metric? To answer, drag the appropriate chart widgets to the correct metrics. Each chart widget may be used once, more than once, or not at all. You may need to drag the split bar between panes or scroll to view content.

NOTE: Each correct selection is worth one point.

Chart Widgets

Answer Area

Burndown

The elapsed time from the creation of work items to their completion:

Cycle Time

Lead Time

The elapsed time to complete work items once they are active:

Velocity

The remaining work:

- A. Mastered
- B. Not Mastered

Answer: A

Explanation:

Box 1: Lead time

Lead time measures the total time elapsed from the creation of work items to their completion.

Box 2: Cycle time

Cycle time measures the time it takes for your team to complete work items once they begin actively working on them.

Box 3: Burndown

Burndown charts focus on remaining work within a specific time period.

NEW QUESTION 5

HOTSPOT - (Topic 4)

Your company uses Team Foundation Server 2013 (TFS 2013). You plan to migrate to Azure DevOps.

You need to recommend a migration strategy that meets the following requirements:

? Preserves the dates of Team Foundation Version Control changesets

? Preserves the changes dates of work items revisions

? Minimizes migration effort

? Migrates all TFS artifacts

What should you recommend? To answer, select the appropriate options in the answer area.

NOTE: Each correct selection is worth one point.

On the TFS server:

Install the TFS Java SDK.

Upgrade TFS to the most recent RTW release.

Upgrade to the most recent version of PowerShell Core.

To perform the migration:

Copy the assets manually.

Use public API-based tools.

Use the TFS Database Import Service.

Use the TFS Integration Platform.

- A. Mastered
- B. Not Mastered

Answer: A

Explanation:

Box 1: Upgrade TFS to the most recent RTM release.

One of the major prerequisites for migrating your Team Foundation Server database is to get your database schema version as close as possible to what is currently deployed in Azure DevOps Services.

Box 2: Use the TFS Database Import Service

In Phase 3 of your migration project, you will work on upgrading your Team Foundation Server to one of the supported versions for the Database Import Service in Azure DevOps Services.

References: Team Foundation Server to Azure DevOps Services Migration Guide

NEW QUESTION 6

- (Topic 4)

You have a build pipeline in Azure Pipelines that uses different jobs to compile an application for 10 different architectures.

The build pipeline takes approximately one day to complete.

You need to reduce the time it takes to execute the build pipeline

Which two actions should you perform? Each correct answer presents part of the solution. NOTE: Each correct selection is worth one point

- A. Move to a blue/green deployment pattern.

- B. Create an agent pool.
- C. Create a deployment group.
- D. Reduce the size of the repository.
- E. Increase the number of parallel jobs.

Answer: BE

Explanation:

Question: I need more hosted build resources. What can I do? Answer: The Azure Pipelines pool provides all Azure DevOps organizations with cloud- hosted build agents and free build minutes each month. If you need more Microsoft-hosted build resources, or need to run more jobs in parallel, then you can either: Host your own agents on infrastructure that you manage. Buy additional parallel jobs.

Reference:

<https://docs.microsoft.com/en-us/azure/devops/pipelines/agents/pools-queues>

NEW QUESTION 7

- (Topic 4)

You store source code in a Git repository in Azure repos. You use a third-party continuous integration (CI) tool to control builds.

What will Azure DevOps use to authenticate with the tool?

- A. certificate authentication
- B. a personal access token (PAT)
- C. a Shared Access Signature (SAS) token
- D. NTLM authentication

Answer: B

Explanation:

Personal access tokens (PATs) give you access to Azure DevOps and Team Foundation Server (TFS), without using your username and password directly.

Reference:

<https://docs.microsoft.com/en-us/azure/devops/repos/git/auth-overview>

NEW QUESTION 8

- (Topic 4)

You have a private distribution group that contains provisioned and unprovisioned devices.

You need to distribute a new iOS application to the distribution group by using Microsoft Visual Studio App Center.

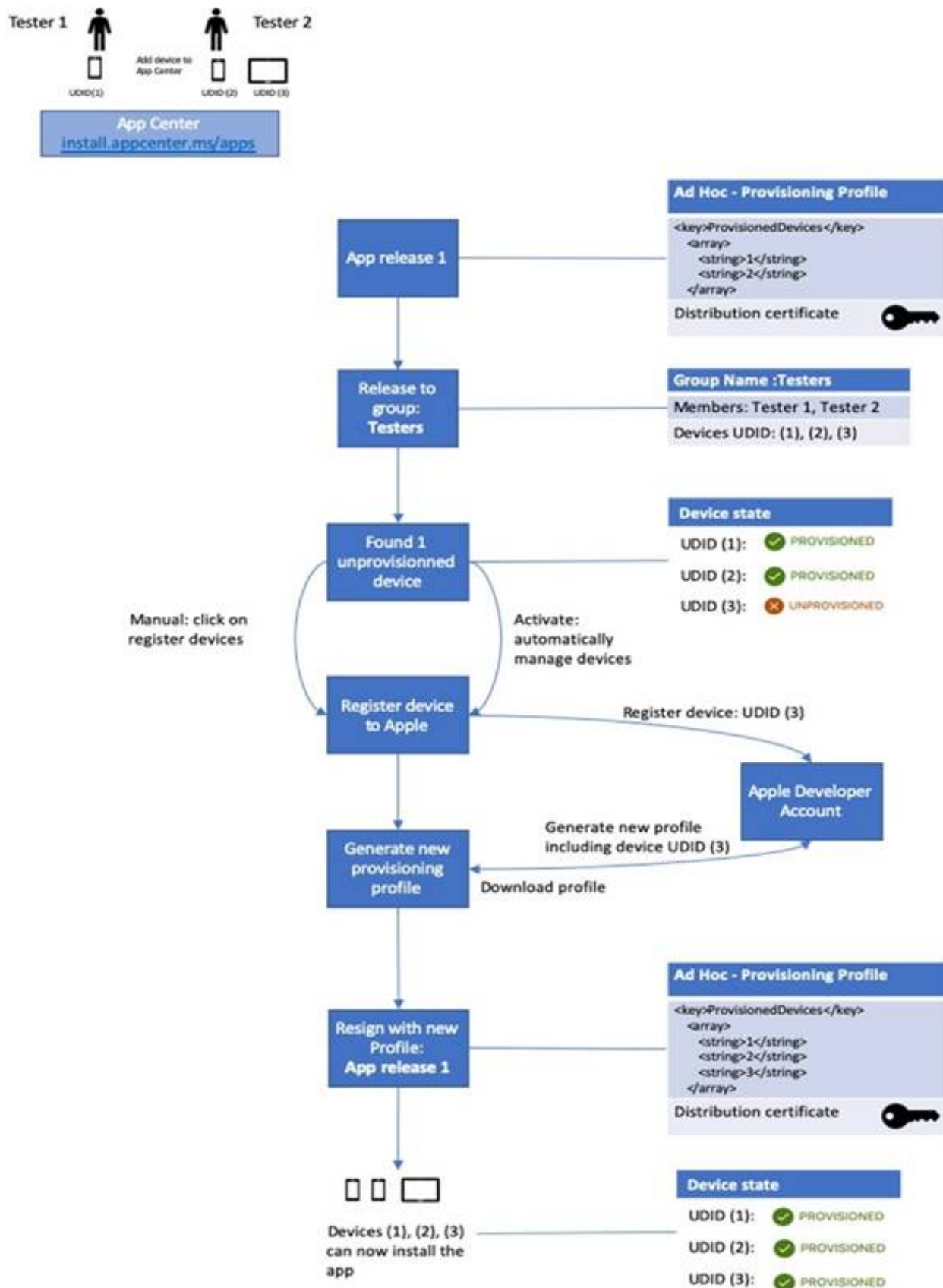
What should you do?

- A. Select Register devices and sign my app.
- B. Generate a new .p12 file for each device.
- C. Create an active subscription in App Center Test.
- D. Add the device owner to the collaborators group.

Answer: A

Explanation:

The following diagram displays the entire app re-signing flow in App Center.



Reference:
https://docs.microsoft.com/en-us/appcenter/distribution/auto-provisioning

NEW QUESTION 9

- (Topic 4)

You plan to provision a self-hosted Linux agent

Which authentication mechanism should you use to register the self-hosted agent?

- A. SSH key
- B. personal access token (PAT)
- C. Alternate credentials
- D. certificate

Answer: B

Explanation:

Note: PAT Supported only on Azure Pipelines and TFS 2017 and newer. After you choose PAT, paste the PAT token you created into the command prompt window. Use a personal access token (PAT) if your Azure DevOps Server or TFS instance and the agent machine are not in a trusted domain. PAT authentication is handled by your Azure DevOps Server or TFS instance instead of the domain controller.

Reference:

https://docs.microsoft.com/en-us/azure/devops/pipelines/agents/v2-linux

https://docs.microsoft.com/en-us/azure/devops/pipelines/agents/v2-linux?view=azure-devops

NEW QUESTION 10

- (Topic 4)

You use Azure Pipelines to manage build pipelines. GitHub to store source code, and Dependabot to manage dependencies.

You have an app named App1.

Dependabot detects a dependency in App1 that requires an update. What should you do first to apply the update?

- A. Perform a commit.
- B. Create a pull request.

- C. Approve the pull request
- D. Create a branch.

Answer: C

Explanation:

DependaBot is a useful tool to regularly check for dependency updates. By helping to keep your project up to date, DependaBot can reduce technical debt and immediately apply security vulnerabilities when patches are released. How does DependaBot work?

? DependaBot regularly checks dependencies for updates

? If an update is found, DependaBot creates a new branch with this upgrade and Pull Request for approval

? You review the new Pull Request, ensure the tests passed, review the code, and decide if you can merge the change

Reference:

<https://samlearnsazure.blog/2019/12/20/github-using-dependabot/>

NEW QUESTION 10

HOTSPOT - (Topic 4)

Your company uses a Git source-code repository.

You plan to implement GitFlow as a workflow strategy.

You need to identify which branch types are used for production code and preproduction code in the strategy.

Which branch type should you identify for each code type? To answer, select the appropriate options in the answer area.

NOTE: Each correct selection is worth one point.

Answer Area

Production code:	<input type="checkbox"/> Master <input type="checkbox"/> Feature <input type="checkbox"/> Develop
Preproduction code:	<input type="checkbox"/> Master <input type="checkbox"/> Feature <input type="checkbox"/> Develop

- A. Mastered
- B. Not Mastered

Answer: A

Explanation:

Box 1: Master

The Master branch contains production code. All development code is merged into master in sometime.

Box 2: Develop

The Develop branch contains pre-production code. When the features are finished then they are merged into develop.

NEW QUESTION 14

- (Topic 4)

You have an Azure DevOps organization named Contoso and an Azure subscription. The subscription contains an Azure virtual machine scale set named VMSS1 that is configured for auto scaling.

You have a project in Azure DevOps named Project 1. Project1 is used to build a web app named App1 and deploy App1 to VMSS1.

You need to ensure that an email alert is generated whenever VMSS1 scales in or out. Solution: From Azure Monitor, configure the auto scale settings.

Does this meet the goal?

- A. Yes
- B. No

Answer: B

NEW QUESTION 18

- (Topic 4)

Note: This question is part of a series of questions that present the same scenario. Each question in the series contains a unique solution that might meet the stated goals. Some question sets might have more than one correct solution, while others might not have a correct solution.

After you answer a question in this section, you will NOT be able to return to it. As a result, these questions will not appear in the review screen.

You have an approval process that contains a condition. The condition requires that releases be approved by a team leader before they are deployed.

You have a policy stating that approvals must occur within eight hours.

You discover that deployment fail if the approvals take longer than two hours.

You need to ensure that the deployments only fail if the approvals take longer than eight hours.

Solution: From Post-deployment conditions, you modify the Timeout setting for post- deployment approvals.

Does this meet the goal?

- A. Yes
- B. No

Answer: B

Explanation:

Use Pre-deployments conditions instead. Use a gate instead of an approval instead.

References:

<https://docs.microsoft.com/en-us/azure/devops/pipelines/release/approvals/gates>

NEW QUESTION 22

- (Topic 4)

Note: This question is part of a series of questions that present the same scenario. Each question in the series contains a unique solution that might meet the stated goals. Some question sets might have more than one correct solution, while others might not have a correct solution.
After you answer a question in this section, you will NOT be able to return to it. As a result, these questions will not appear in the review screen.
The lead developer at your company reports that adding new application features takes longer than expected due to a large accumulated technical debt. You need to recommend changes to reduce the accumulated technical debt. Solution: You recommend reducing the code complexity.
Does this meet the goal?

- A. Yes
- B. No

Answer: A

Explanation:

Reference:
<https://dzone.com/articles/fight-through-the-pain-how-to-deal-with-technical>

NEW QUESTION 25

HOTSPOT - (Topic 4)

You have an Azure subscription that contains an Azure key vault named Vault1. an Azure pipeline named Pipeline1, and an Azure SQL database named DB1. Pipeline1 is used to deploy an app that will authenticate to DB1 by using a password. You need to store the password in Vault1. The solution must ensure that the password can be accessed by Pipeline1. What should you do? To answer, select the appropriate options in the answer area. NOTE: Each correct selection is worth one point.

Answer Area

Store the password as a:

Secret

Certificate

Key

Secret

Grant Pipeline1 access to Vault1 by modifying the:

Access policies

Access control (IAM) settings

Access policies

Security settings

- A. Mastered
- B. Not Mastered

Answer: A

Explanation:

Answer Area

Store the password as a:

Secret

Certificate

Key

Secret

Grant Pipeline1 access to Vault1 by modifying the:

Access policies

Access control (IAM) settings

Access policies

Security settings

NEW QUESTION 29

DRAG DROP - (Topic 4)

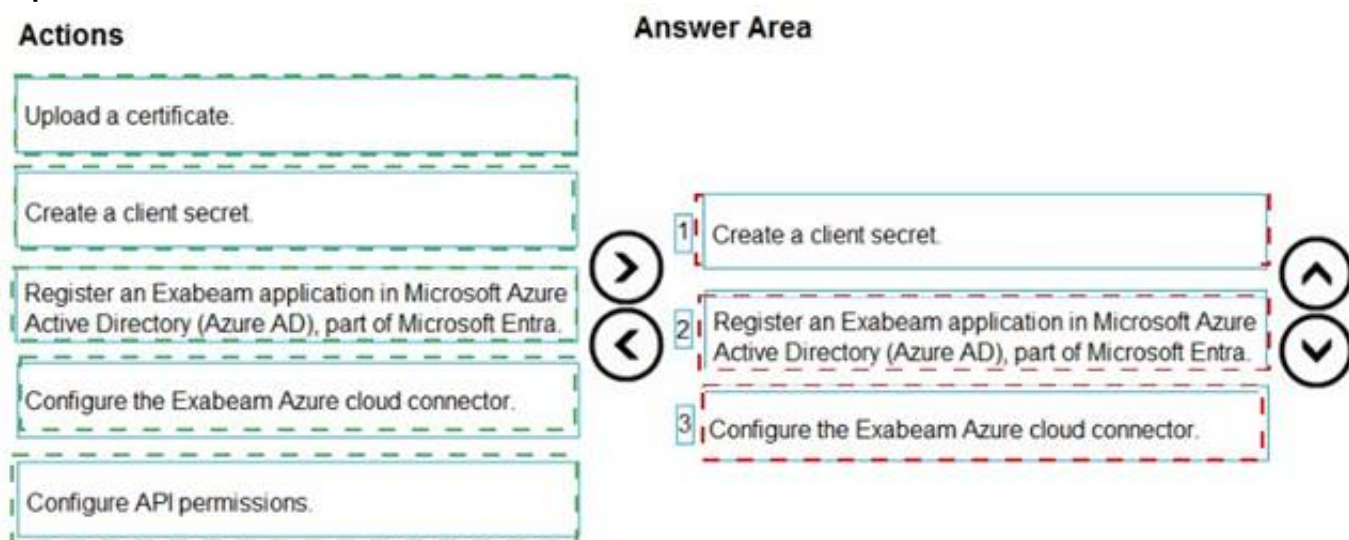
You use Extra beam Fusion SIEM and the Azure cloud platform. You need to integrate Extra beam and Azure. The solution must use OAuth authentication. Which three actions should you perform in sequence? To answer, move the appropriate actions from the list of actions to the answer area and arrange them in the correct order.

Actions	Answer Area
Upload a certificate.	
Create a client secret.	
Register an Exabeam application in Microsoft Azure Active Directory (Azure AD), part of Microsoft Entra.	1
Configure the Exabeam Azure cloud connector.	2
Configure API permissions.	3

- A. Mastered
- B. Not Mastered

Answer: A

Explanation:



NEW QUESTION 31

- (Topic 4)

You use WhiteSource Bolt to scan a Node.js application.

The WhiteSource Bolt scan identifies numerous libraries that have invalid licenses. The libraries are used only during development and are not part of a production deployment.

You need to ensure that WhiteSource Bolt only scans production dependencies.

Which two actions should you perform? Each correct answer presents part of the solution. NOTE: Each correct selection is worth one point.

- A. Run npm install and specify the --production flag.
- B. Modify the WhiteSource Bolt policy and set the action for the licenses used by the development tools to Reassign.
- C. Modify the devDependencies section of the project's Package.json file.
- D. Configure WhiteSource Bolt to scan the node_modules directory only.

Answer: AC

Explanation:

A: To resolve NPM dependencies, you should first run "npm install" command on the relevant folders before executing the plugin.

C: All npm packages contain a file, usually in the project root, called package.json - this file holds various metadata relevant to the project. This file is used to give information to npm that allows it to identify the project as well as handle the project's dependencies. It can also contain other metadata such as a project description, the version of the project in a particular distribution, license information, even configuration data - all of which can be vital to both npm and to the end users of the package.

Reference: <https://whitesource.atlassian.net/wiki/spaces/WD/pages/34209870/NPM+Plugin>

<https://nodejs.org/en/knowledge/getting-started/npm/what-is-the-file-package-json>

NEW QUESTION 33

- (Topic 4)

You plan to onboard 10 new developers.

You need to recommend a development environment that meets the following requirements:

- ? Integrates with GitHub
- ? Provides integrated debugging tools
- ? Supports remote workers and hot-desking environments
- ? Supports developers who use browsers, tablets, and Chromebooks

What should you recommend?

- A. VS Code
- B. Xamarin Studio
- C. Mono Develop
- D. Github/Visual Studio Code spaces

Answer: D

Explanation:

Visual Studio Code spaces is built to accommodate the widest variety of projects or tasks, including GitHub and integrating debugging.

Visual Studio Code spaces conceptually and technically extends the Visual Studio Code Remote Development extensions.

In addition to "backend" environments, Visual Studio Code spaces supports these "frontend" editors:

- ? Visual Studio Code
- ? Visual Studio Code-based editor in the browser

Reference:

<https://docs.microsoft.com/sv-se/visualstudio/codespaces/overview/what-is-vsonline>

NEW QUESTION 35

HOTSPOT - (Topic 4)

You currently use JIRA, Jenkins, and Octopus as part of your DevOps processes. You plan to use Azure DevOps to replace these tools.

Which Azure DevOps service should you use to replace each tool? To answer, select the appropriate options in the answer area.

NOTE: Each correct selection is worth one point.

JIRA:

Boards
Build pipelines
Release pipelines
Repos

Jenkins:

Boards
Build pipelines
Release pipelines
Repos

Octopus:

Boards
Build pipelines
Release pipelines
Repos

- A. Mastered
- B. Not Mastered

Answer: A

Explanation:

JIRA- BoardJenkins- Build PipelinesOctopus- Release pipelines

NEW QUESTION 38

- (Topic 4)

Note: This question is part of a series of questions that present the same scenario. Each question in the series contains a unique solution that might meet the stated goals. Some question sets might have more than one correct solution, while others might not have a correct solution.

After you answer a question in this section, you will NOT be able to return to it. As a result, these questions will not appear in the review screen.

Your company has a project in Azure DevOps for a new web application. You need to ensure that when code is checked in, a build runs automatically.

Solution: From the Pre-deployment conditions settings of the release pipeline, you select After stage.

Does this meet the goal?

- A. Yes
- B. No

Answer: B

Explanation:

Instead, In Visual Designer you enable continuous integration (CI) by:

? Select the Triggers tab.

? Enable Continuous integration.

References:

<https://docs.microsoft.com/en-us/azure/devops/pipelines/get-started-designer>

NEW QUESTION 43

- (Topic 4)

You have an Azure virtual machine that is monitored by using Azure Monitor. The virtual machine has the Azure Log Analytics agent installed.

You plan to deploy the Service Map solution from Azure Marketplace.

What should you deploy to the virtual machine to support the Service Map solution?

- A. the Telegraf agent
- B. the Azure Monitor agent
- C. the Dependency agent
- D. the Windows Azure diagnostics extension (WAD)

Answer: C

NEW QUESTION 48

- (Topic 4)

You have a project in Azure DevOps named Project1 that references an Azure Artifacts feed named Feed1. You have a package named Package1 that has the versions shown in the following table.

Version	Description
1.0.3	Manually pushed to Feed1
1.4.0	Manually pushed to Feed1
2.0.0	Available from an upstream source
2.3.1	Saved from an upstream source

You need to perform a build of Project1. Which version of Package1 will be used?

- A. 1.0.3
- B. 1.4.0
- C. 2.0.0
- D. 2.3.1

Answer: D

NEW QUESTION 52

DRAG DROP - (Topic 4)

You have a private project in Azure DevOps and two users named User1 and User2. You need to add User1 and User2 to groups to meet the following requirements:

- ? User1 must be able to create a code wiki.
- ? User2 must be able to edit wiki pages.
- ? The solution must use the principle of least privilege.

To which group should you add each user? To answer, drag the appropriate groups to the correct users. Each group may be used once, more than once, or not at all. You may need to drag the split bar between panes or scroll to view content.

NOTE: Each correct selection is worth one point.

Groups

Build Administrators

Contributors

Project Administrators

Project Valid Users

Stakeholders

Answer Area

User1:

User2:

- A. Mastered
- B. Not Mastered

Answer: A

Explanation:

User1: Project Administrators

You must have the permission Create Repository to publish code as wiki. By default, this permission is set for members of the Project Administrators group.

User2: Contributors

Anyone who is a member of the Contributors security group can add or edit wiki pages. Anyone with access to the team project, including stakeholders, can view the wiki.

NEW QUESTION 53

HOTSPOT - (Topic 4)

Your company uses GitHub for source control. GitHub repositories store source code and store process documentation. The process documentation is saved as Microsoft Word documents that contain simple flow charts stored as .bmp files.

You need to optimize the integration and versioning of the process documentation and the flow charts. The solution must meet the following requirements:

- Store documents as plain text.
- Minimize the number of files that must be maintained.
- Simplify the modification, merging, and reuse of flow charts.
- Simplify the modification, merging, and reuse of documents.

What should you include in the solution? To answer, select the appropriate options in the answer area. NOTE: Each correct selection is worth one point.

Convert the .docx files to:

LaTeX Typesetting (.tex)

Markdown (.md)

Portable Document Format (.pdf)

Convert the flow charts to:

Mermaid graph diagrams (.md)

Portable Network Graphics (.png)

Tagged Image File Format (.tiff)

- A. Mastered
- B. Not Mastered

Answer: A

Explanation:

Box 1: Markdown (.md)

Github understands several text formats, including .txt and .md. .md stands for a file written in Markdown.

Box 2: Mermaid diagrams

Mermaid lets you create diagrams and visualizations using text and code.

It is a Javascript based diagramming and charting tool that renders Markdown-inspired text definitions to create and modify diagrams dynamically.

NEW QUESTION 54

- (Topic 4)

Note: This question is part of a series of questions that present the same scenario. Each question in the series contains a unique solution that might meet the stated goals. Some question sets might have more than one correct solution, while others might not have a correct solution

After you answer a question in this section, you will NOT be able to return to it. As a result, these questions will not appear in the review screen

Your company has a project in Azure DevOps for a new web application. You need to ensure that when code is checked in, a build runs automatically.

Solution: From the Continuous deployment trigger settings of the release pipeline, you enable the Pull request trigger setting.

Does the meet the goal?

- A. Yes
- B. No

Answer: B

Explanation:

In Visual Designer you enable continuous integration (CI) by:

? Select the Triggers tab.

? Enable Continuous integration.

References:

<https://docs.microsoft.com/en-us/azure/devops/pipelines/get-started-designer>

NEW QUESTION 56

- (Topic 4)

You have a project in Azure DevOps named Project1 that contains two environments named environment1 and envkonment2.

When a new version of Project1 is released, the latest version is deployed to environment2, and the previous version is redeployed to environments

You need to distribute users across the environments. The solution must meet the following requirements:

- New releases must be available to only a subset of the users.
- You must gradually increase the number of users that can access environment2. What should you use?

- A. web app deployment slots
- B. Azure Traffic Manager
- C. VIP swapping
- D. Azure Load Balancer

Answer: A

NEW QUESTION 59

- (Topic 4)

You have an on-premises app named App1 that accesses Azure resources by using credentials stored in a configuration file.

You plan to upgrade App1 to use an Azure service principal.

What is required for App1 to programmatically sign in to Azure Active Directory (Azure AD)?

- A. the application ID, a client secret, and the object ID
- B. a client secret, the object ID, and the tenant ID
- C. the application ID, a client secret, and the tenant ID
- D. the application ID, a client secret, and the subscription ID

Answer: C

Explanation:

<https://docs.microsoft.com/en-us/azure/active-directory/develop/app-objects-and-service-principals> "When you've completed the app registration, you've a globally unique instance of the app (the application object) which lives within your home tenant or directory. You also have a globally unique ID for your app (the app or client ID). In the portal, you can then add secrets or certificates and scopes to make your app work, customize the branding of your app in the sign-in dialog, and more."

NEW QUESTION 60

- (Topic 4)

Note: This question is part of a series of questions that present the same scenario. Each question in the series contains a unique solution that might meet the stated goals. Some question sets might have more than one correct solution, while others might not have a correct solution.

After you answer a question in this section, you will NOT be able to return to it. As a result, these questions will not appear in the review screen.

You manage a project in Azure DevOps.

You need to prevent the configuration of the project from changing over time. Solution: Add a code coverage step to the build pipelines.

Does this meet the goal?

- A. Yes
- B. No

Answer: B

Explanation:

Instead implement Continuous Assurance for the project.

Reference:

<https://azsk.azurewebsites.net/04-Continous-Assurance/Readme.html>

NEW QUESTION 63

HOTSPOT - (Topic 4)

You manage build and release pipelines by using Azure DevOps. Your entire managed environment resides in Azure.

You need to configure a service endpoint for accessing Azure Key Vault secrets. The solution must meet the following requirements:

? Ensure that the secrets are retrieved by Azure DevOps.

? Avoid persisting credentials and tokens in Azure DevOps.

How should you configure the service endpoint? To answer, select the appropriate options in the answer area.

NOTE: Each correct selection is worth one point.

Service connection type:

	▼
Azure Resource Manager	
Generic service	
Team Foundation Server / Azure Pipelines service connection	

Authentication/authorization method for the connection:

	▼
Azure Active Directory OAuth 2.0	
Grant authorization	
Managed Service Identity Authentication	

A. Mastered

B. Not Mastered

Answer: A

Explanation:

Box 1: Azure Pipelines service connection

Box 2: Managed Service Identity Authentication

The managed identities for Azure resources feature in Azure Active Directory (Azure AD) provides Azure services with an automatically managed identity in Azure AD. You can use the identity to authenticate to any service that supports Azure AD authentication, including Key Vault, without any credentials in your code.

NEW QUESTION 65

SIMULATION - (Topic 4)

You need to ensure that the <https://contoso.com/statushook> webhook is called every time a repository named az40010480345acr1 receives a new version of an image named dotnetapp.

To complete this task, sign in to the Microsoft Azure portal.

A. Mastered

B. Not Mastered

Answer: A

Explanation:

? Sign in to the Azure portal.

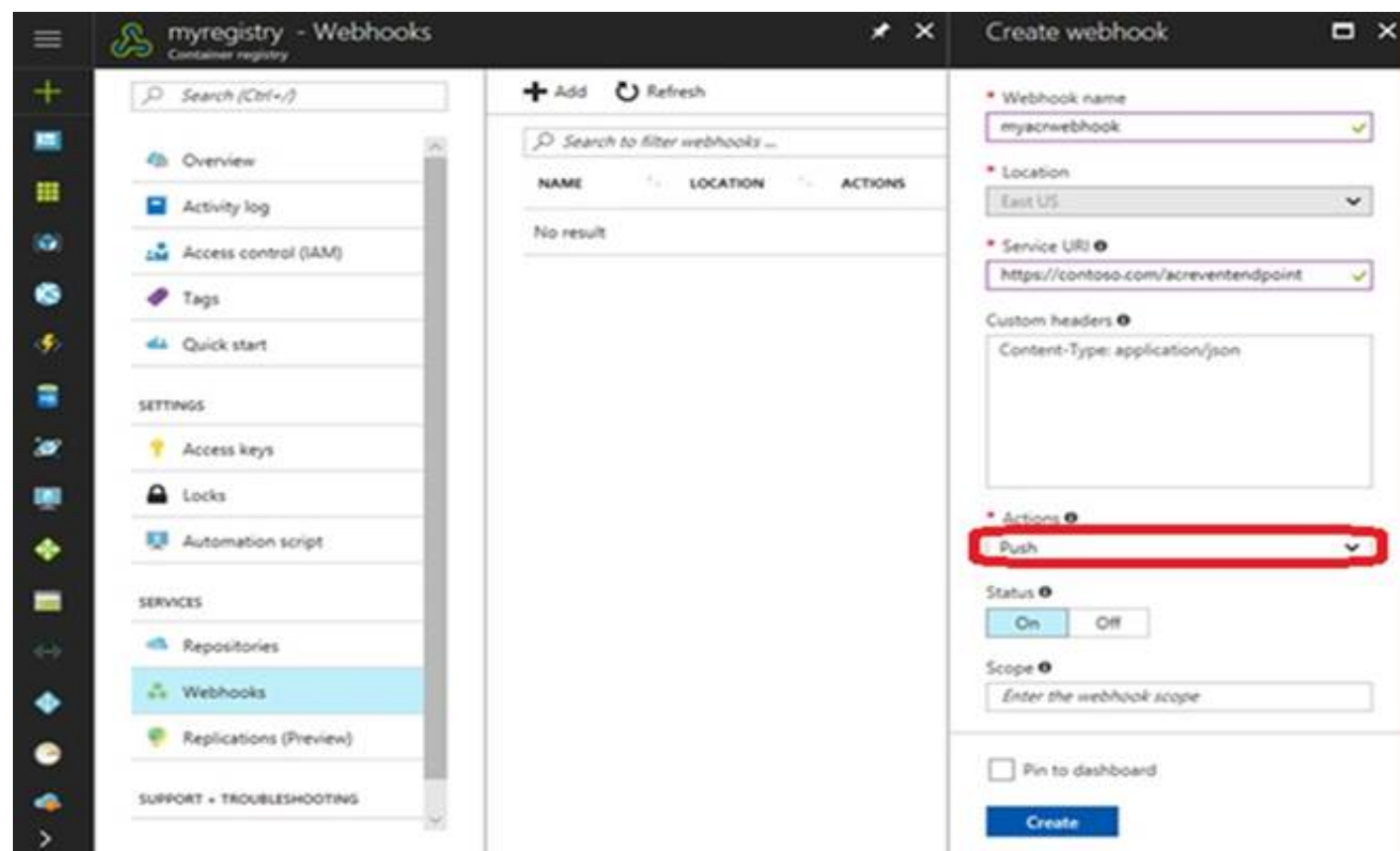
? Navigate to the container registry az40010480345acr1.

? Under Services, select Webhooks.

? Select the existing webhook <https://contoso.com/statushook>, and double-click on it to get its properties.

? For Trigger actions select image push

Example web hook:



NEW QUESTION 70

DRAG DROP - (Topic 4)

You have an Azure subscription that uses Azure Monitor and contains a Log Analytics workspace.

You have an encryption key.

You need to configure Azure Monitor to use the key to encrypt log data

Actions	Answer Area
Grant the system-assigned managed identity Certificate permissions for the key vault.	1
Create an Azure key vault and store the key.	2
Configure the key vault properties for the cluster.	3
Grant the system-assigned managed identity Key permissions for the key vault.	4
Create an Azure Monitor Logs dedicated cluster that has a system-assigned managed identity.	5
Link the Log Analytics workspace to the cluster.	

- A. Mastered
- B. Not Mastered

Answer: A

Explanation:

Actions	Answer Area
Grant the system-assigned managed identity Certificate permissions for the key vault.	1
Create an Azure key vault and store the key.	2
Configure the key vault properties for the cluster.	3
Grant the system-assigned managed identity Key permissions for the key vault.	4
Create an Azure Monitor Logs dedicated cluster that has a system-assigned managed identity.	5
Link the Log Analytics workspace to the cluster.	

NEW QUESTION 74

SIMULATION - (Topic 4)

You have a web app that connects to an Azure SQL Database named db1.

You need to configure db1 to send Query Store runtime statistics to Azure Log Analytics. To complete this task, sign in to the Microsoft Azure portal.

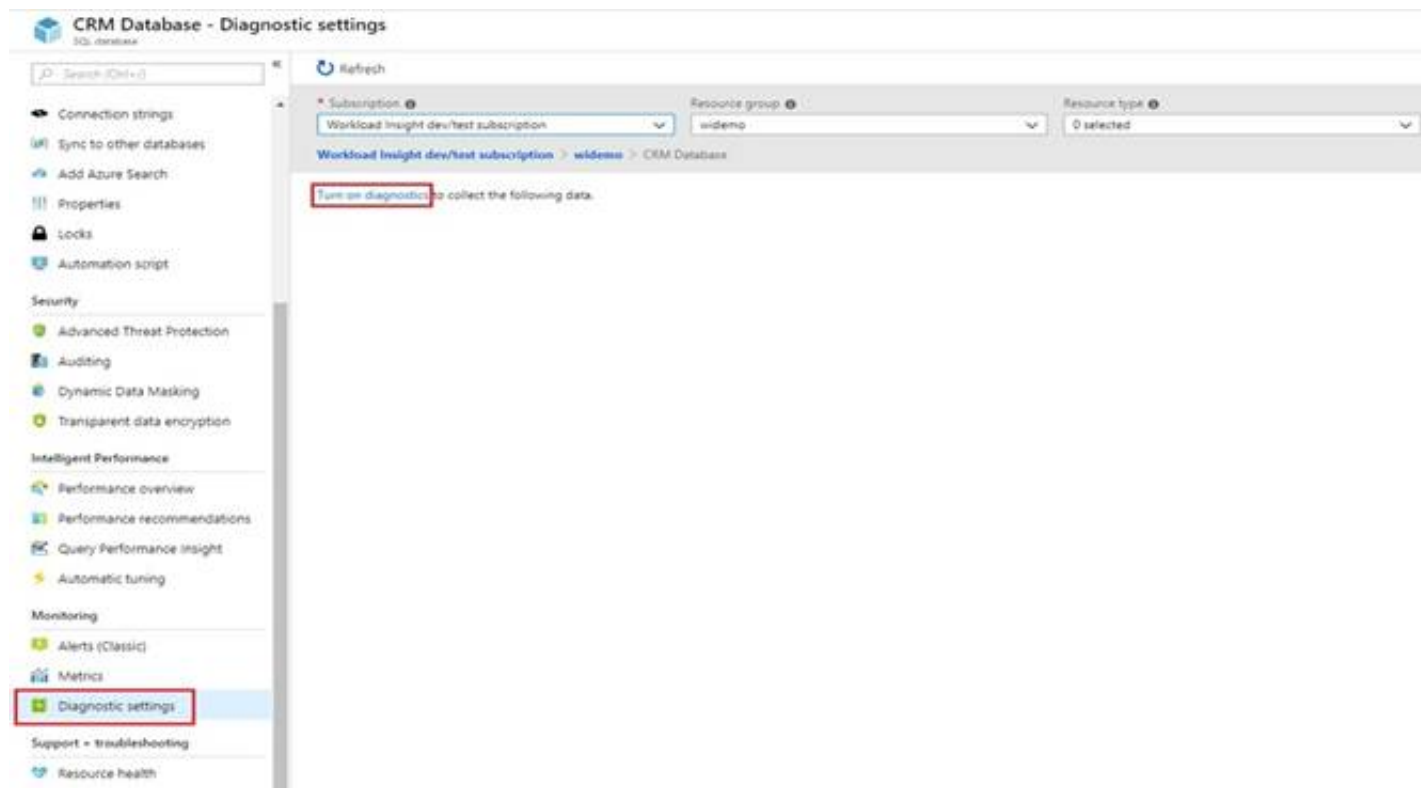
- A. Mastered
- B. Not Mastered

Answer: A

Explanation:

To enable streaming of diagnostic telemetry for a single or a pooled database, follow these steps:

- * 1. Go to Azure SQL database resource.
- * 2. Select Diagnostics settings.
- * 3. Select Turn on diagnostics if no previous settings exist, or select Edit setting to edit a previous setting. You can create up to three parallel connections to stream diagnostic telemetry.
- * 4. Select Add diagnostic setting to configure parallel streaming of diagnostics data to multiple resources.



Graphical user

- * 5. Enter a setting name for your own reference.
- * 6. Select a destination resource for the streaming diagnostics data: Archive to storage account, Stream to an event hub, or Send to Log Analytics.
- * 7. For the standard, event-based monitoring experience, select the following check boxes for database diagnostics log telemetry: Query Store Runtime Statistics

Diagnostics settings

Save

Discard

Delete

* Name

service

☐ Archive to a storage account

☐ Stream to an event hub

☒ Send to Log Analytics

Subscription

Workload Insight dev/test subscription

Log Analytics Workspace

sqlanalytics356 (westcentralus)

LOG

☒ SQLInsights

☒ AutomaticTuning

☒ QueryStoreRuntimeStatistics

☒ QueryStoreWaitStatistics

☒ Errors

☒ DatabaseWaitStatistics

☒ Timeouts

☒ Blocks

☒ Deadlocks

METRIC

☒ Basic

- * 8. For an advanced, one-minute-based monitoring experience, select the check box for Basic metrics.
- * 9. Select Save.

NEW QUESTION 76

- (Topic 4)

Your company has a project in Azure DevOps for a new application. The application will be deployed to several Azure virtual machines that run Windows Server 2016.

You need to recommend a deployment strategy for the virtual machines. The strategy must meet the following requirements:

- Ensure that the virtual machines maintain a consistent configuration.
- Minimize administrative effort to configure the virtual machines What should you include in the recommendation?

- A. Deployment YAML and Azure pipeline stage templates
- B. Azure Resource Manager templates and the Custom Script Extension for Windows
- C. Azure Resource Manager templates and the PowerShell Desired State Configuration (DSC) extension for Windows
- D. Deployment YAML and Azure pipeline deployment groups

Answer: C

Explanation:

The Custom Script Extension downloads and executes scripts on Azure virtual machines. This extension is useful for post deployment configuration, software installation, or any other configuration or management tasks. Scripts can be downloaded from Azure storage or GitHub, or provided to the Azure portal at

extension run time. The Custom Script Extension integrates with Azure Resource Manager templates, and can be run using the Azure CLI, PowerShell, Azure portal, or the Azure Virtual Machine REST API.

References:

<https://docs.microsoft.com/en-us/azure/virtual-machines/extensions/custom-script-windows>

NEW QUESTION 79

- (Topic 4)

You are creating a dashboard in Azure Boards.

You need to visualize the time from when work starts on a work item until the work item is closed.

Which type of widget should you use?

- A. cycle time
- B. velocity
- C. cumulative flow
- D. lead time

Answer: D

NEW QUESTION 80

- (Topic 4)

You have a GitHub repository that is integrated with Azure Boards. Azure Boards has a work item that has the number 715.

You need to ensure that when you commit source code in GitHub, the work item is updated automatically. What should you include in the commit comments?

- A. @714
- B. =715
- C. the URL of the work item
- D. AB#715

Answer: B

NEW QUESTION 83

- (Topic 4)

You have an Azure subscription. The subscription contains virtual machines that run either Windows Server or Linux.

You plan to use Prometheus to monitor performance metrics. You need to integrate Prometheus and Azure Monitor.

Which two actions should you perform? Each correct answer presents part of the solution. NOTE: Each correct selection is worth one point.

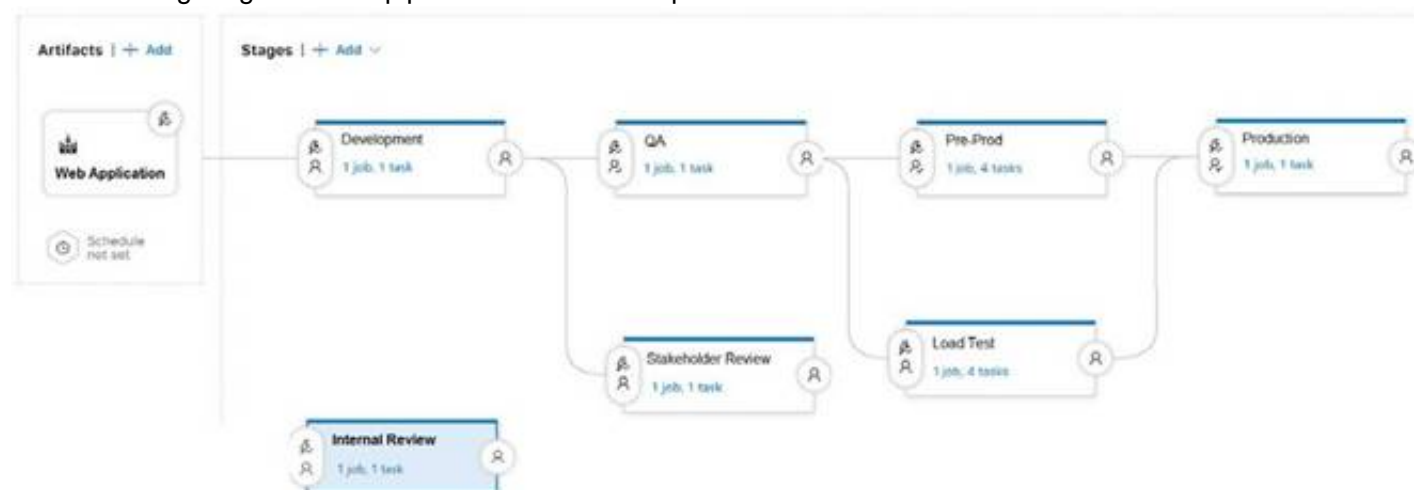
- A. Install a Prometheus server on a Windows virtual machine in Azure.
- B. On each virtual machine, expose the metrics endpoint.
- C. On each virtual machine, enable the Azure Diagnostics extension.
- D. On each virtual machine, enable the containerized agent for Azure Monitor.
- E. Expose a virtual network service endpoint for Azure Storage.
- F. Install a Prometheus server on a Linux virtual machine in Azure.

Answer: AB

NEW QUESTION 87

HOTSPOT - (Topic 4)

You are configuring a release pipeline in Azure DevOps as shown in the exhibit.



Use the drop-down menus to select the answer choice that answers each question based on the information presented in the graphic.

NOTE: Each correct selection is worth one point.

How many stages have triggers set?

0
1
2
3
4
5
6
7

Which component should you modify to enable continuous delivery?

The Development stage
The Internal Review stage
The Production stage
The Web Application artifact

- A. Mastered
 B. Not Mastered

Answer: A

Explanation:

Box 1: 5

There are five stages: Development, QA, Pre-production, Load Test and Production. They all have triggers.

Box 2: The Internal Review stage

References: <https://docs.microsoft.com/en-us/azure/devops/pipelines/release/triggers>

NEW QUESTION 91

- (Topic 4)

Your company creates a web application.

You need to recommend a solution that automatically sends to Microsoft Teams a daily summary of the exceptions that occur in the application.

Which two Azure services should you recommend? Each correct answer presents part of the solution.

NOTE: Each correct selection is worth one point.

- A. Azure Logic Apps
 B. Azure Pipelines
 C. Microsoft Visual Studio App Center
 D. Azure DevOps Project
 E. Azure Application Insights

Answer: AE

Explanation:

E: Exceptions in your live web app are reported by Application Insights.

Note: Periodical reports help keep a team informed on how their business critical services are doing. Developers, DevOps/SRE teams, and their managers can be productive with automated reports reliably delivering insights without requiring everyone to sign in the portal. Such reports can also help identify gradual increases in latencies, load or failure rates that may not trigger any alert rules.

A: You can programmatically query Application Insights data to generate custom reports on a schedule. The following options can help you get started quickly:

Automate reports with Microsoft Flow

Automate reports with Logic Apps Reference:

<https://docs.microsoft.com/en-us/azure/azure-monitor/app/asp-net-exceptions> <https://docs.microsoft.com/en-us/azure/azure-monitor/app/automate-custom-reports>

NEW QUESTION 95

- (Topic 4)

Your company uses cloud-hosted Jenkins for builds.

You need to ensure that Jenkins can retrieve source code from Azure Repos.

Which three actions should you perform? Each correct answer presents part of the solution NOTE: Each correct answer selection is worth one point

- A. Add the Team Foundation Server (TFS) plug-in to Jenkins.
 B. Create a personal access token m your Azure DevOps account.
 C. Create a webhook in Jenkins.
 D. Add a domain to your Jenkins account.
 E. Create a service hook m Azure DevOps.

Answer: ABE

Explanation:

References:

<https://blogs.msdn.microsoft.com/devops/2017/04/25/vsts-visual-studio-team-services-integration-with-jenkins/>

<http://www.aisoftwarellc.com/blog/post/how-to-setup-automated-builds-using-jenkins-and-visual-studio-team-foundation-server/2044>

NEW QUESTION 98

- (Topic 4)

You manage source code control and versioning by using GitHub. A large file it committed to a repository accidentally.

You need to reduce the size of the repository. The solution must remove the file from the repository.

What should you use?

- A. bfg
- B. 1fs
- C. gvfs
- D. init

Answer: A

NEW QUESTION 101

- (Topic 4)

You have several Azure Active Directory (Azure AD) accounts.

You need to ensure that users use multi-factor authentication (MFA) to access Azure apps from untrusted networks.

What should you configure in Azure AD?

- A. access reviews
- B. managed identities
- C. entitlement management
- D. conditional access

Answer: D

Explanation:

You can configure a Conditional Access policy that requires MFA for access from untrusted networks.

Reference:

<https://docs.microsoft.com/en-us/azure/active-directory/conditional-access/howto-conditional-access-policy-all-users-mfa>

NEW QUESTION 106

DRAG DROP - (Topic 4)

Your company has four projects. The version control requirements for each project are shown in the following table.

Project	Requirement
Project 1	Project leads must be able to restrict access to individual files and folders in the repository.
Project 2	The version control system must enforce the following rules before merging any changes to the main branch: <ul style="list-style-type: none"> Changes must be reviewed by at least two project members. Changes must be associated to at least one work team.
Project 3	The project members must be able to work in Azure Repos directly from Xcode.
Project 4	The release branch must only be viewable or editable by the project leads.

You plan to use Azure Repos for all the projects.

Which version control system should you use for each project? To answer, drag the appropriate version control systems to the correct projects. Each version control system may be used once, more than once, or not at all. You may need to drag the split bar between panes or scroll to view content.

NOTE: Each correct selection is worth one point.

Version Control Systems

Answer Area

<div>Git</div>	Project 1: <div></div>
<div>Perforce</div>	Project 2: <div></div>
<div>Subversion</div>	Project 3: <div></div>
<div>Team Foundation Version Control</div>	Project 4: <div></div>

- A. Mastered
- B. Not Mastered

Answer: A

Explanation:

1 -> TFVS Refer : <https://docs.microsoft.com/en-us/azure/devops/repos/tfvc/control-access-team-foundation-version-control?view=azure-devops>

2 -> TFVS Refer : <https://docs.microsoft.com/en-us/azure/devops/repos/tfvc/add-check-policies?view=azure-devops>

3 -> Git Refer : <https://docs.microsoft.com/en-us/azure/devops/repos/git/share-your-code-in-git-xcode?view=azure-devops>

4 -> TFVS Refer : <https://docs.microsoft.com/en-us/azure/devops/organizations/security/permissions?view=azure-devops#tfvc>

NEW QUESTION 107

HOTSPOT - (Topic 4)

You have an Azure Kubernetes Service (AKS) pod.

You need to configure a probe to perform the following actions: Confirm that the pod is responding to service requests.

Check the status of the pod four times a minute. Initiate a shutdown if the pod is unresponsive.

How should you complete the YAML configuration file? To answer, select the appropriate options in the answer area.

NOTE: Each correct selection is worth one point.

```
apiVersion: v1
kind: Pod
metadata:
  labels:
    test: readiness-and-liveness
  name: readiness-http
spec:
  containers:
  - name: container1
    image: k8s.gcr.io/readiness-and-liveness
    args:
    - /server
```

	▼
livenessProbe:	
readinessProbe:	
ShutdownProbe:	
startupProbe:	

```
httpGet:
  path: /checknow
  port: 8123
  httpHeaders:
  - name: Custom-Header
    value: CheckNow
```

	▼
initialDelaySeconds: 15	
periodSeconds: 15	
timeoutSeconds: 15	

- A. Mastered
- B. Not Mastered

Answer: A

Explanation:

Graphical user interface, text, application Description automatically generated

Box 1: readiness Probe:

For containerized applications that serve traffic, you might want to verify that your container is ready to handle incoming requests. Azure Container Instances supports readiness probes to include configurations so that your container can't be accessed under certain conditions.

NEW QUESTION 112

- (Topic 4)

You are developing an application. The application source has multiple branches. You make several changes to a branch used for experimentation. You need to update the main branch to capture the changes made to the experimentation branch and override the history of the Git repository. Which Git option should you use?

- A. Rebase
- B. Fetch
- C. MergeE1457D5D1DDCBD40AB3BF70D5D
- D. Push

Answer: C

Explanation:

<https://docs.microsoft.com/en-us/azure/devops/repos/git/pull-requests>

NEW QUESTION 114

- (Topic 4)

You plan to use a NuGet package in a project in Azure DevOps. The NuGet package is in a feed that requires authentication. You need to ensure that the project can restore the NuGet package automatically. What should the project use to automate the authentication?

- A. an Azure Automation account
- B. an Azure Artifacts Credential Provider
- C. an Azure Active Directory (Azure AD) account that has multi-factor authentication (MFA) enabled
- D. an Azure Active Directory (Azure AD) service principal D18912E1457D5D1DDCBD40AB3BF70D5D

Answer: B

Explanation:

The Azure Artifacts Credential Provider automates the acquisition of credentials needed to restore NuGet packages as part of your .NET development workflow. It integrates with MSBuild, dotnet, and NuGet(.exe) and works on Windows, Mac, and Linux. Any time you want to use packages from an Azure Artifacts feed, the Credential Provider will automatically acquire and securely store a token on behalf of the NuGet client you're using.

Reference:
<https://github.com/Microsoft/artifacts-credprovider>

NEW QUESTION 119

HOTSPOT - (Topic 4)

Your company uses Azure DevOps for Get source control.

You have a project in Azure DevOps named Contoso App that contains the following repositories:

? <https://dev.azure.com/contoso/contoso-app/core-api>

? <https://dev.azure.com/contoso/contoso-app/core-spa>

? <https://dev.azure.com/contoso/contoso-app/core-db>

You need to ensure that developers receive Slack notifications when there are pull requests created for Contoso App.

What should you run in Slack? To answer, select the appropriate options in the answer area.

NOTE: Each correct selection is worth one point.

/azrepos

▼

feedback

signin

subscribe

subscriptions

▼

<https://dev.azure.com/contoso/contoso-app>

<https://dev.azure.com/contoso/contoso-app/core-api>

<https://dev.azure.com/contoso/contoso-app/core-db>

<https://dev.azure.com/contoso/contoso-app/core-spa>

- A. Mastered
- B. Not Mastered

Answer: A

Explanation:

Box 1: subscribe

To start monitoring all Get repositories in a project, use the following slash command inside a channel:

/azrepos subscribe [project ur1]

Box 2: <https://dev.azure.com/contoso/contoso-app>

You can also monitor a specific repository using the following command:

/azrepos subscribe [repository ur1]

The repository URL can be to any page within your repository that has your repository name.

For example, for Get repositories, use:

/azrepos subscribe https://dev.azure.com/myorg/myproject/_git/myrepository

NEW QUESTION 120

- (Topic 4)

Your company creates a new Azure DevOps team. D18912E1457D5D1DDCBD40AB3BF70D5D

You plan to use Azure DevOps for sprint planning.

You need to visualize the flow of your work by using an agile methodology. Which Azure DevOps component should you use?

- A. Kanban boards
- B. sprint planning
- C. delivery plans
- D. portfolio backlogs

Answer: A

Explanation:

Customizing Kanban boards

To maximize a team's ability to consistently deliver high quality software, Kanban emphasize two main practices. The first, visualize the flow of work, requires you to map your team's workflow stages and configure your Kanban board to match. Your Kanban board turns your backlog into an interactive signboard, providing a visual flow of work.

Reference: <https://azuredevopslabs.com/labs/azuredevops/agile/>

NEW QUESTION 121

- (Topic 4)

You are designing a YAML template for use with Azure Pipelines. The template Will include the Outputfile parameter.

Which two methods can you use to reference the parameter? Each correct answer presents a complete solution.

NOTE: Each correct selection is worth one point.

- A. `$(parameters['outputfile'])`
- B. `${parameters.outputfile}`
- C. `$(parameters.outputfile)`
- D. `$(parameters[outputfile])`
- E. `${parameters['outputfile']}`

- A. Option A
B. Option B
C. Option C
D. Option D
E. Option E

Answer: CD

NEW QUESTION 122

- (Topic 4)

You manage a project by using Azure Boards. You manage the project code by using GitHub.

You have three work items that have IDs of 456, 457, and 458.

You need to create a pull request that will be linked to all the work items. The solution must set the state of work item 456 to done.

What should you add to the commit message?

A)
`Fixes #456, #457, #458`

B)
`Fixes #AB456, #AB457, #AB458`

C)
`#456, #457, #458`
`Completed #456`

D)
`#AB456, #AB457, #AB458`

- A. Option A
B. Option B
C. Option C
D. Option D

Answer: D

NEW QUESTION 127

- (Topic 4)

Your company is building a new solution in Java.

The company currently uses a SonarQube server to analyze the code of .NET solutions. You need to analyze and monitor the code quality of the Java solution.

Which task types should you add to the build pipeline?

- A. Chef
B. Gradle
C. Octopus
D. Gulp

Answer: B

Explanation:

SonarQube is a set of static analyzers that can be used to identify areas of improvement in your code. It allows you to analyze the technical debt in your project and keep track of it in the future. With Maven and Gradle build tasks, you can run SonarQube analysis with minimal setup in a new or existing Azure DevOps Services build task.

References:

<https://docs.microsoft.com/en-us/azure/devops/java/sonarqube?view=azure-devops>

NEW QUESTION 128

DRAG DROP - (Topic 4)

You have web app named App1 that uses Application Insights in Azure Monitor to Store log data. App1 has users in multiple locations.

You need to query App1 requests from London and Paris that return error. The solution must meet the following requirements:

? Return the timestamp, url, result Code, and duration fields.

? Only requests made the last hour. How should you complete the query?

Values

extend

project

select

timestamp >= ago(1hr)

timestamp -gt ago(1hr)

Answer Area

```
...
requests
| where [ ]
| where resultCode == "404" and (client_City == "London" or client_City == "Paris")
| [ ] timestamp, url, resultCode, duration
...
```

- A. Mastered
B. Not Mastered

Answer: A

Explanation:

Values

extend

project

select

timestamp >= ago(1hr)

timestamp -gt ago(1hr)

Answer Area

```
...
requests
| where [ timestamp -gt ago(1hr) ]
| where resultCode == "404" and (client_City == "London" or client_City == "Paris")
| [ select ] timestamp, url, resultCode, duration
...
```

NEW QUESTION 129

- (Topic 4)

You are building a Microsoft ASP.NET application that requires authentication.

You need to authenticate users by using Azure Active Directory (Azure AD). What should you do first?

- A. Create a membership database in an Azure SQL database.
B. Assign an enterprise application to users and groups.
C. Create an app registration in Azure AD.
D. Configure the application to use a SAML endpoint.
E. Create a new OAuth token from the application.

Answer: C

Explanation:

Register your application to use Azure Active Directory. Registering the application means that your developers can use Azure AD to authenticate users and request access to user resources such as email, calendar, and documents.

Reference:

<https://docs.microsoft.com/en-us/azure/active-directory/manage-apps/developer-guidance-for-integrating-applications>

<https://docs.microsoft.com/en-us/azure/active-directory/develop/quickstart-v2-aspnet-webapp>

NEW QUESTION 133

- (Topic 4)

Note: This question is part of a series of questions that present the same scenario. Each question in the series contains a unique solution that might meet the stated goals. Some question sets might have more than one correct solution, while others might not have a correct solution.

After you answer a question in this section, you will NOT be able to return to it. As a result, these questions will not appear in the review screen.

You manage a project in Azure DevOps.

You need to prevent the configuration of the project from changing over time. Solution: Implement Continuous Assurance for the project.

Does this meet the goal?

- A. Yes
B. No

Answer: A

Explanation:

The basic idea behind Continuous Assurance (CA) is to setup the ability to check for "drift" from what is considered a secure snapshot of a system. Support for Continuous Assurance

lets us treat security truly as a 'state' as opposed to a 'point in time' achievement. This is particularly important in today's context when 'continuous change' has become a norm.

There can be two types of drift:

? Drift involving 'baseline' configuration: This involves settings that have a fixed number of possible states (often pre-defined/statically determined ones). For instance, a SQL DB can have TDE encryption turned ON or OFF...or a Storage Account may have auditing turned ON however the log retention period may be less than 365 days.

? Drift involving 'stateful' configuration: There are settings which cannot be constrained within a finite set of well-known states. For instance, the IP addresses configured to have access to a SQL DB can be any (arbitrary) set of IP addresses. In such scenarios, usually human judgment is initially required to determine whether a particular configuration should be considered 'secure' or not. However, once that is done, it is important to ensure that there is no "stateful drift" from the attested configuration. (E.g., if, in a troubleshooting session, someone adds the IP address of a developer machine to the list, the Continuous Assurance feature should be able to identify the drift and generate notifications/alerts or even trigger 'auto-remediation' depending on the severity of the change).

Reference:

<https://azsk.azurewebsites.net/04-Continous-Assurance/Readme.html>

NEW QUESTION 135

HOTSPOT - (Topic 4)

Your company is creating a suite of three mobile applications.

You need to control access to the application builds. The solution must be managed at the organization level

What should you use? To answer, select the appropriate options in the answer area. NOTE: Each correct selection is worth one point.

Groups to control the build access:

	▼
Active Directory groups	
Azure Active Directory groups	
Microsoft Visual Studio App Center distribution groups	

Group type:

	▼
Private	
Public	
Shared	

- A. Mastered
- B. Not Mastered

Answer: A

Explanation:

Box 1: Microsoft Visual Studio App Center distribution Groups

Distribution Groups are used to control access to releases. A Distribution Group represents a set of users that can be managed jointly and can have common access to releases. Example of Distribution Groups can be teams of users, like the QA Team or External Beta Testers or can represent stages or rings of releases, such as Staging.

Box 2: Shared

Shared distribution groups are private or public distribution groups that are shared across multiple apps in a single organization. Shared distribution groups eliminate the need to replicate distribution groups across multiple apps.

Note: With the Deploy with App Center Task in Visual Studio Team Services, you can deploy your apps from Azure DevOps (formerly known as VSTS) to App Center. By deploying to App Center, you will be able to distribute your builds to your users.

References: <https://docs.microsoft.com/en-us/appcenter/distribution/groups>

NEW QUESTION 140

- (Topic 4)

You have an Azure DevOps organization named Contoso, an Azure DevOps project named Project1, an Azure subscription named Sub1, and an Azure key vault named vault1.

You need to ensure that you can reference the values of the secrets stored in vault1 in all the pipelines of Project1. The solution must prevent the values from being stored in the pipelines. What should you do?

- A. Create a variable group in Project1.
- B. Add a secure file to Project1.
- C. Modify the security settings of the pipelines.
- D. Configure the security policy of Contoso.

Answer: A

Explanation:

Use a variable group to store values that you want to control and make available across multiple pipelines.

References:

<https://docs.microsoft.com/en-us/azure/devops/pipelines/library/variable-groups> <https://docs.microsoft.com/en-us/azure/devops/pipelines/library/variable-groups?view=azure-devops&tabs=yaml#link-secrets-from-an-azure-key-vault>

NEW QUESTION 143

- (Topic 4)

You are monitoring the health and performance of an Azure web app by using Azure Application Insights. You need to ensure that an alert is sent when the web app has a sudden rise in performance issues and failures. What should you use?

- A. Application Insights Profiler
- B. Continuous export
- C. Smart Detection
- D. custom events
- E. usage analysis

Answer: C

Explanation:

Smart Detection automatically warns you of potential performance problems and failure anomalies in your web application. It performs proactive analysis of the telemetry that your app sends to Application Insights. If there is a sudden rise in failure rates, or abnormal patterns in client or server performance, you get an alert.
Reference:
<https://docs.microsoft.com/en-us/azure/azure-monitor/app/proactive-diagnostics>

NEW QUESTION 147

DRAG DROP - (Topic 4)

You are configuring an Azure DevOps deployment pipeline. The deployed application will authenticate to a web service by using a secret stored in an Azure key vault.

You need to use the secret in the deployment pipeline.

Which three actions should you perform in sequence? To answer, move the appropriate actions from the list of actions to the answer area and arrange them in the correct order.

Actions

Export a certificate from the key vault.

Add an app registration in Microsoft Azure Active Directory (Azure AD), part of Microsoft Entra.

Generate a self-signed certificate.

Create a service principal in Microsoft Azure Active Directory (Azure AD), part of Microsoft Entra.

Configure an access policy in the key vault.

Add an Azure Resource Manager service connection to the pipeline.

Answer Area

- A. Mastered
- B. Not Mastered

Answer: A

Explanation:

Actions

Export a certificate from the key vault.

Add an app registration in Microsoft Azure Active Directory (Azure AD), part of Microsoft Entra.

Generate a self-signed certificate.

Create a service principal in Microsoft Azure Active Directory (Azure AD), part of Microsoft Entra.

Configure an access policy in the key vault.

Add an Azure Resource Manager service connection to the pipeline.

Answer Area

Entra.

Generate a self-signed certificate.

NEW QUESTION 152

- (Topic 4)

You plan to publish build artifacts by using an Azure pipeline.

You need to create an .artifactignore file that meets the following requirements:

- Includes all files in the build output folder and all subfolders
- Excludes files that have the .dll extension What should you include in the file?

- A.

```
./**
!*.dll
```
- B.

```
**/*
!*.dll
```
- C.

```
*/**
*.dll
```
- D.

```
**/*
#*.dll
```

- A. Option A
B. Option B
C. Option C
D. Option D

Answer: B

NEW QUESTION 155

- (Topic 3)

You need to configure Azure Pipelines to control App2 builds. Which authentication method should you use?

- A. Windows NTLM
B. certificate
C. SAML
D. personal access token (PAT)

Answer: D

Explanation:

Scenario: Deploy App2 to an Azure virtual machine named VM1.

A personal access token (PAT) is used as an alternate password to authenticate into Azure DevOps.

Reference:

<https://docs.microsoft.com/en-us/azure/devops/organizations/accounts/use-personal-access-tokens-to-authenticate>

NEW QUESTION 157

- (Topic 3)

You need to meet the technical requirements for monitoring App1. What should you use?

- A. Splunk
B. Azure Application Insights
C. Azure Advisor
D. App Service logs

Answer: B

NEW QUESTION 161

- (Topic 3)

You need to meet the technical requirements for controlling access to Azure DevOps.

What should you use?

- A. Azure Multi-Factor Authentication (MFA)
B. on-premises firewall rules
C. conditional access policies in Azure AD
D. Azure role-based access control (Azure RBAC)

Answer: B

Explanation:

Scenario: Access to Azure DevOps must be restricted to specific IP addresses.

Azure DevOps is authenticated through Azure Active Directory. You can use Azure AD's conditional access to prevent logins from certain geographies and address ranges.

Reference:

<https://www.rebeladmin.com/2018/08/step-step-guide-configure-location-based-conditional-access-policies/>

NEW QUESTION 162

DRAG DROP - (Topic 2)

You need to implement Project6.

Which three actions should you perform in sequence? To answer, move the appropriate actions from the list of actions to the answer area and arrange them in the correct order.

Actions

Open the release pipeline editor.

Open the **Triggers** tab.

Disable the continuous integration trigger.

Enable Gates.

Add a manual intervention task.

Add Query Work Items.

Answer Area

1

2

3

>

<

↑

↓

- A. Mastered
- B. Not Mastered

Answer: A

Explanation:

Scenario: Implement Project3, Project5, Project6, and Project7 based on the planned changes

Project 6	Project6 will provide support for build and deployment pipelines. Deployment will be allowed only if the number of current work items representing active software bugs is 0.
-----------	---

Step 1: Open the release pipeline editor.

In the Releases tab of Azure Pipelines, select your release pipeline and choose Edit to open the pipeline editor.

Step 2: Enable Gates.

Choose the pre-deployment conditions icon for the Production stage to open the conditions panel. Enable gates by using the switch control in the Gates section.

Step 3: Add Query Work items.

Choose + Add and select the Query Work Items gate. Configure the gate by selecting an existing work item query.

Deployment gates ⓘ

+ Add ▾

Query Work Items

Enabled

🗑

Query Work Items ⓘ

Task version 0.* ▾

Display name *

Query Work Items

Query * ⓘ

Active Bugs ▾

Upper threshold * ⓘ

0

Advanced ^

Lower threshold * ⓘ

0

Output Variables ^

Reference name ⓘ

Variables list

There are no output variables associated with this task [more information](#)

Evaluation options ▾

Note: A case for release gate is:

Incident and issues management. Ensure the required status for work items, incidents, and issues. For example, ensure deployment occurs only if no priority zero bugs exist, and validation that there are no active incidents takes place after deployment.

References:

https://docs.microsoft.com/en-us/azure/devops/pipelines/release/deploy-using-approvals?view=azure-devops#configure-gate

NEW QUESTION 166

DRAG DROP - (Topic 2)

You need to configure Azure Automation for the computers in Pool7.

Which three actions should you perform in sequence? To answer, move the appropriate actions from the list of actions to the answer area and arrange them in the correct order.

Actions		Answer Area
Run the New-AzureRmResourceGroupDeployment Azure PowerShell cmdlet.		1
Create an Azure Resource Manager template file that has an extension of .json.	➤	2
Run the Import-AzureRmAutomationDscConfiguration Azure PowerShell cmdlet.	➤	3
Run the Start-AzureRmAutomationDscCompilationJob Azure PowerShell cmdlet.		
Create a Desired State Configuration (DSC) configuration file that has an extension of .ps1.		

- A. Mastered
- B. Not Mastered

Answer: A

Explanation:

Actions		Answer Area
Run the New-AzureRmResourceGroupDeployment Azure PowerShell cmdlet.		1
Create an Azure Resource Manager template file that has an extension of .json.	➤	2
Run the Import-AzureRmAutomationDscConfiguration Azure PowerShell cmdlet.	➤	3
Run the Start-AzureRmAutomationDscCompilationJob Azure PowerShell cmdlet.		
Create a Desired State Configuration (DSC) configuration file that has an extension of .ps1.		

NEW QUESTION 170

- (Topic 1)

You are using GitHub as a source code repository.

You create a client-side Git hook on the commit-msg event. The hook requires that each commit message contain a custom work item tag.

You need to make a commit that does not have a work item tag. Which git commit parameter should you use?

- A. --squash
- B. --no-verify
- C. --message "
- D. --no-post-rewrite

Answer: B

Explanation:

The commit-msg hook is invoked by git-commit and git-merge, and can be bypassed with the --no-verify option.

Reference:

<https://git-scm.com/docs/githooks>

NEW QUESTION 173

HOTSPOT - (Topic 1)

HOTSPOT

You have an Azure virtual machine named VM1 that runs Linux.

You plan to deploy the Desired State Configuration (DSC) extension to VM1. You need to grant the Log Analytics agent the appropriate directory permissions.

How should you complete the command? To answer, select the appropriate options in the answer area.
 NOTE: Each correct selection is worth one point.

setfacl -m u:omsagent:

r	/lib
X	/etc
rx	/tmp
rwX	/usr

- A. Mastered
- B. Not Mastered

Answer: A

Explanation:

Box 1: rwX

The Log Analytics agent for Linux runs as the omsagent user. To grant >write permission to the omsagent user, run the command setfacl -m u:omsagent:rwX /tmp.

Box 2: /tmp

Deploying DSC to a Linux node uses the /tmp folder.

NEW QUESTION 174

- (Topic 4)

Your company uses GitHub for source control. The company has a team that performs code reviews.

You need to automate the assignment of the code reviews. The solution must meet the following requirements:

Prioritize the assignment of code reviews to team members who have the fewest outstanding assignments.

Ensure that each team member performs an equal number of code reviews in any 30-day period.

Prevent the assignment of code reviews to the team leader.

Which two actions should you perform? Each correct answer presents part of the solution. NOTE: Each correct selection is worth one point.

- A. Clear Never assign certain team members.
- B. Select If assigning team members, don't notify the entire team.
- C. Select Never assign certain team members.
- D. Set Routing algorithm to Round robin.
- E. Set Routing algorithm to Load balance.

Answer: AE

Explanation:

A: To always skip certain members of the team, select Never assign certain team members. Then, select one or more team members you'd like to always skip. In this case select the team leader.

E: The load balance algorithm chooses reviewers based on each member's total number of recent review requests and considers the number of outstanding reviews for each member. The load balance algorithm tries to ensure that each team member reviews an equal number of pull requests in any 30day period.

Reference:

<https://docs.github.com/en/organizations/organizing-members-into-teams/managing-code-review-assignment-for-your-team>

NEW QUESTION 178

- (Topic 4)

After you answer a question in this section, you will NOT be able to return to it. As a result, these questions will not appear in the review screen.

You use Azure Pipelines to build and test a React js application. You have a pipeline that has a single job.

You discover thai installing JavaScript packages from npm takes approximately five minutes each time you run the pipeline.

You need to recommend a solution to reduce the pipeline execution time.

Solution: You recommend defining a container job that uses a custom container that has the JavaScript packages preinstalled.

Does this meet the goal?

- A. Yes
- B. No

Answer: B

Explanation:

Instead enable pipeline caching.

Note:

npm-cache is a command line utility that caches dependencies installed via npm, bower, jspm and composer.

It is useful for build processes that run [npm|bower|composer|jspm] install every time as part of their build process. Since dependencies don't change often, this often means slower build times. npm-cache helps alleviate this problem by caching previously installed dependencies on the build machine.

Reference: <https://www.npmjs.com/package/npm-cache>

NEW QUESTION 179

- (Topic 4)

You are designing a strategy to monitor the baseline metrics of Azure virtual machines that run Windows Server. You need to collect detailed data about the processes running in the guest operating system. Which two agents should you deploy? Each correct answer presents part of the solution. NOTE: Each correct selection is worth one point.

- A. the Dependency agent
- B. the Azure Network Watcher Agent for Windows
- C. the Telegraf agent

D. the Azure Log Analytics agent

Answer: AD

Explanation:

The following table provide a quick comparison of the Azure Monitor agents for Windows.

	Azure Monitor agent (preview)	Diagnostics extension (WAD)	Log Analytics agent	Dependency agent
Environments supported	Azure	Azure	Azure Other cloud On-premises	Azure Other cloud On-premises
Agent requirements	None	None	None	Requires Log Analytics agent
Data collected	Event Logs Performance	Event Logs ETW events Performance File based logs IIS logs .NET app logs Crash dumps Agent diagnostics logs	Event Logs Performance File based logs IIS logs Insights and solutions Other services	Process dependencies Network connection metrics
Data sent to	Azure Monitor Logs Azure Monitor Metrics	Azure Storage Azure Monitor Metrics Event Hub	Azure Monitor Logs	Azure Monitor Logs (through Log Analytics agent)

Reference:

<https://docs.microsoft.com/en-us/azure/azure-monitor/platform/agents-overview>

NEW QUESTION 180

- (Topic 4)

You are deploying a server application that will run on a Server Core installation of Windows Server 2019.

You create an Azure key vault and a secret.

You need to use the key vault to secure API secrets for third-party integrations. Which three actions should you perform? Each correct answer presents part of the solution.

NOTE: Each correct selection is worth one point. D18912E1457D5D1DDCBD40AB3BF70D5D

- A. Configure RBAC for the key vault.
- B. Modify the application to access the key vault.
- C. Configure a Key Vault access policy.
- D. Deploy an Azure Desired State Configuration (DSC) extension.
- E. Deploy a virtual machine that uses a system-assigned managed identity.

Answer: BCE

Explanation:

BE: An app deployed to Azure can take advantage of Managed identities for Azure resources, which allows the app to authenticate with Azure Key Vault using Azure AD authentication without credentials (Application ID and Password/Client Secret) stored in the app.

? Select Add Access Policy.

? Open Secret permissions and provide the app with Get and List permissions.

? Select Select principal and select the registered app by name. Select the Select button.

? Select OK.

? Select Save.

? Deploy the app.

References:

<https://docs.microsoft.com/en-us/aspnet/core/security/key-vault-configuration> <https://docs.microsoft.com/en-us/azure/key-vault/general/tutorial-net-virtual-machine>

NEW QUESTION 181

- (Topic 4)

You have a project in Azure DevOps named Project1. Project1 contains a build pipeline named Pipe1 that builds an application named Appl.

You have an agent pool named Pool1 that contains a Windows Server 2019-based self-hosted agent. Pipe1 uses Pool1.

You plan to implement another project named Project2. Project2 will have a build pipeline named Pipe2 that builds an application named App2.

App1 and App2 have conflicting dependencies.

You need to minimize the possibility that the two build pipelines will conflict with each other. The solution must minimize infrastructure costs.

What should you do?

- A. Create two container jobs.

- B. Change the self-hosted agent to use Red Hat Enterprise Linux (RHEL) 9.
- C. Add another self-hosted agent
- D. Add a Docker Compose task to the build pipelines.

Answer: A

NEW QUESTION 183

- (Topic 4)

You have a web app hosted on Azure App Service. The web app stores data in an Azure SQL database.

You need to generate an alert when there are 10,000 simultaneous connections to the database. The solution must minimize development effort.

Which option should you select in the Diagnostics settings of the database?

- A. Send to Log Analytics
- B. Stream to an event hub
- C. Archive to a storage account

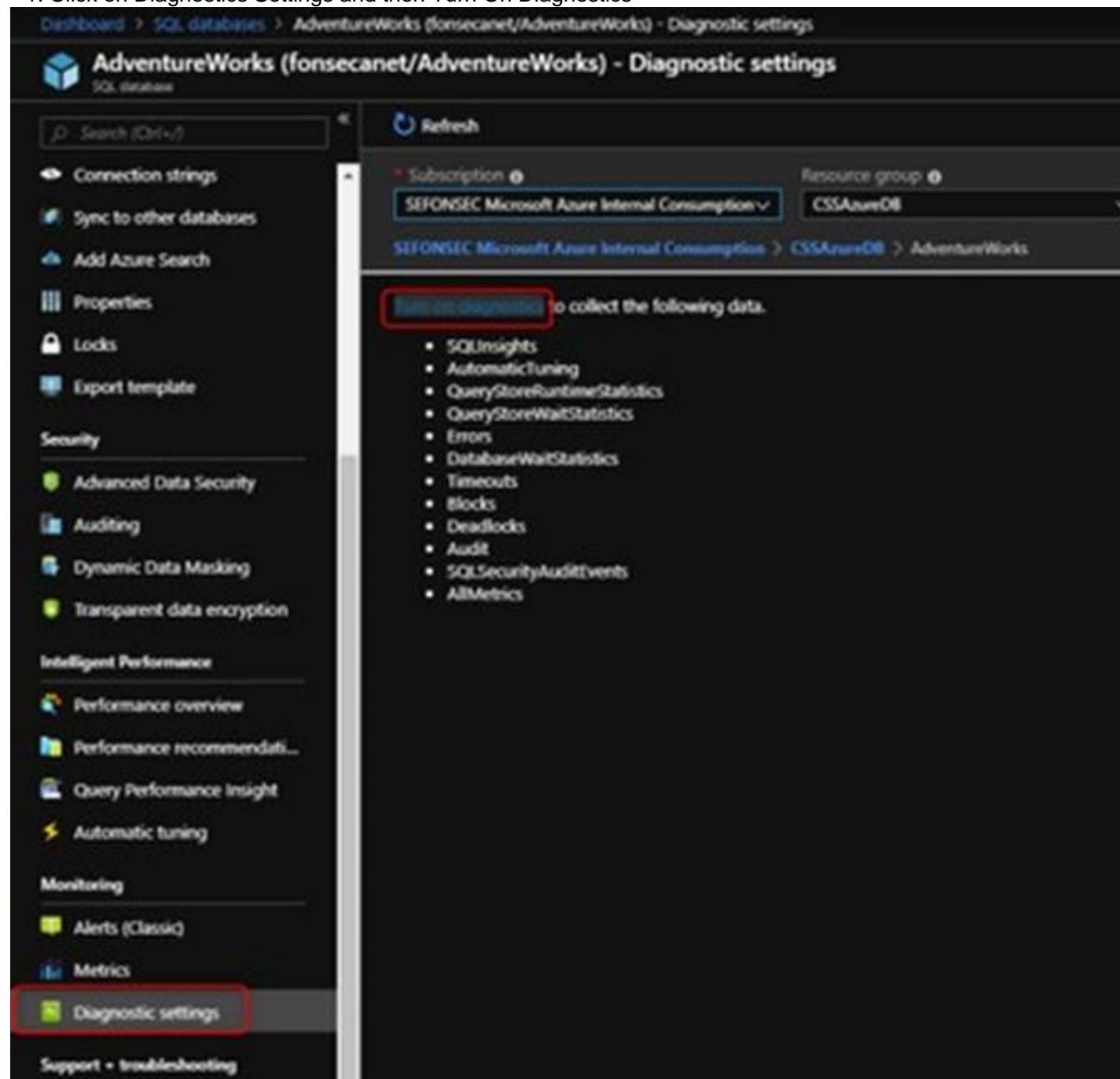
Answer: A

Explanation:

ENABLE DIAGNOSTICS TO LOG ANALYTICS

This configuration is done PER DATABASE

* 1. Click on Diagnostics Settings and then Turn On Diagnostics



* 2. Select to Send to Log Analytics and select the Log Analytics workspace. For this sample I will selected only Errors

Graphical user interface Description automatically generated with medium confidence

Reference:

<https://techcommunity.microsoft.com/t5/azure-database-support-blog/azure-sql-db-and-log-analytics-better-together-part-1/ba-p/794833>

NEW QUESTION 188

- (Topic 4)

Note: This question is part of a series of questions that present the same scenario. Each question in the series contains a unique solution that might meet the stated goals. Some question sets might have more than one correct solution, while others might not have a correct solution.

After you answer a question in this section, you will NOT be able to return to it. As a result, these questions will not appear in the review screen.

The lead developer at your company reports that adding new application features takes longer than expected due to a large accumulated technical debt.

You need to recommend changes to reduce the accumulated technical debt. Solution: You recommend increasing the test coverage.

Does this meet the goal?

A. Yes

B. No

Answer: B

Explanation:

Instead reduce the code complexity. Reference:

<https://dzone.com/articles/fight-through-the-pain-how-to-deal-with-technical>

NEW QUESTION 193

- (Topic 4)

You are integrating an Azure Boards project and a GitHub repository. You need to authenticate Azure Boards to GitHub.

Which two authentication methods can you use? Each correct answer presents a complete solution.

NOTE: Each correct selection is worth one point.

A. a trusted root certificate

B. a publisher certificate

C. Azure Active Directory (Azure AD)

D. GitHub user credentials

E. a personal access token (PAT)

Answer: CD

NEW QUESTION 194

SIMULATION - (Topic 4)

You have an Azure function hosted in an App Service plan named az400-9940427-func1.

You need to configure az400-9940427-func1 to upgrade the functions automatically whenever new code is committed to the master branch of <https://github.com/Azure-Samples/functions-quickstart>.
To complete this task, sign in to the Microsoft Azure portal.

- A. Mastered
- B. Not Mastered

Answer: A

Explanation:

- * 1. Open Microsoft Azure Portal
- * 2. Log into your Azure account, select App Services in the Azure portal left navigation, and then select configure az400-9940427-func1.
- * 3. On the app page, select Deployment Center in the left menu.
- * 4. On the Build provider page, select Azure Pipelines (Preview), and then select Continue.
- * 5. On the Configure page, in the Code section:
For GitHub, drop down and select the Organization, Repository, and Branch you want to deploy continuously.
- * 6. Select Continue.
- * 7. On the Test page, choose whether to enable load tests, and then select Continue.
- * 8. Depending on your App Service plan pricing tier, you may see a Deploy to staging page. Choose whether to enable deployment slots, and then select Continue.
- * 9. After you configure the build provider, review the settings on the Summary page, and then select Finish.

References:

<https://docs.microsoft.com/en-us/azure/app-service/deploy-continuous-deployment>

NEW QUESTION 195

- (Topic 4)

You have an Azure subscription that contains resources in several resource groups.

You need to design a monitoring strategy that will provide a consolidated view. The solution must support the following requirements:

- Support role-based access control (RBAC) by using Azure Active Directory (Azure AD) identities.
- Include visuals from Azure Monitor that are generated by using the Kusto query language.
- Support documentation written in markdown.
- Use the latest data available for each visual.

What should you use to create the consolidated view?

- A. Azure Data Explorer
- B. Azure dashboards
- C. Azure Monitor
- D. Microsoft Power BI

Answer: A

Explanation:

There are several tools available for running queries in Azure Data Explorer, including Kusto.

Kusto uses a role-based access control (RBAC) model, under which authenticated principals are mapped to roles, and get access according to the roles they're assigned.

Note: Azure Data Explorer is a highly scalable and secure analytics service that enables you to do rich exploration of structured and unstructured data for instant insights. Optimized for ad-hoc queries, Azure Data Explorer enables rich data exploration over raw, structured, and semi-structured data delivering fast time to insight. Query with a modern, intuitive query language that offers fast, ad-hoc, and advanced query capabilities over high-rate data volumes and varieties

Reference:

<https://docs.microsoft.com/en-us/azure/data-explorer/tools-integrations-overview>

NEW QUESTION 198

- (Topic 4)

You use GitHub for source control of .NET applications.

You need to deploy a documentation solution that meets the following requirements:

- ? Documents will be written in Markdown as developers make code changes
- ? Changes to the documents will trigger the recompilation of a static website.
- ? Users will access the documents from the static websites
- ? Documents will be stored in a GitHub repository

Which two tools can you use to compile the website? Each correct answer presents a complete solution.

- A. Jekyll
- B. Medium
- C. caret
- D. WordPress
- E. Doc FX

Answer: AD

Explanation:

A. Jekyll is a static site generator that can be used to generate a static website from Markdown files stored in a GitHub repository. Jekyll supports the use of Markdown for writing documentation, and it can automatically recompile the website whenever changes are made to the documentation.

* E. Doc FX is another tool that can be used to compile a static website from Markdown files stored in a GitHub repository. It is an open-source tool that can be used to generate API documentation, reference documentation, and other types of documentation from source code and other files. Doc FX supports the use of Markdown for writing documentation and it can automatically recompile the website whenever changes are made to the documentation.

NEW QUESTION 202

- (Topic 4)

Your company uses Azure DevOps for the build pipelines and deployment pipelines of Java-based projects.

You need to recommend a strategy for managing technical debt. Which action should you include in the recommendation?

- A. Configure post-deployment approvals in the deployment pipeline.
- B. Integrate Azure DevOps and Sonar Rube.
- C. Integrate Azure DevOps and Azure Dev Test Labs.

Answer: B

Explanation:

You can manage technical debt with Sonar Rube and Azure DevOps.

Note: Technical debt is the set of problems in a development effort that make forward progress on customer value inefficient. Technical debt saps productivity by making code hard to understand, fragile, time-consuming to change, difficult to validate, and creates unplanned work that blocks progress. Unless they are managed, technical debt can accumulate and hurt the overall quality of the software and the productivity of the development team in the long term

SonarQube an open source platform for continuous inspection of code quality to perform automatic reviews with static analysis of code to:

- ? Detect Bugs
- ? Code Smells
- ? Security Vulnerabilities
- ? Centralize Quality
- ? What's covered in this lab

Reference: <https://azuredevopslabs.com/labs/vstsextend/sonarqube/>

NEW QUESTION 206

- (Topic 4)

You have a project in Azure DevOps.

You need to push notifications about pull requests to a Microsoft Teams channel. The solution must minimize development effort.

What should you do?

- A. Install the Azure Repos app for teams and configure a subscription to receive notifications in the channel.
- B. Use Azure Automation to connect to the Azure DevOps REST API and send messages to Teams.
- C. Install the Azure Pipelines app for Teams and configure a subscription to receive notifications in the channel.
- D. Use an Azure function to connect to the Azure DevOps REST API and send messages to Teams.

Answer: A

NEW QUESTION 211

- (Topic 4)

You have an Azure DevOps project named Project1 and an Azure subscription named Sub1. Sub1 contains an Azure virtual machine scale set named VMSS1. VMSS1 hosts a web application named WebApp1.

WebApp1 uses stateful sessions.

The WebApp1 installation is managed by using the Custom Script extension. The script resides in an Azure Storage account named sa1.

You plan to make a minor change to a UI element of WebApp1 and to gather user feedback about the change.

You need to implement limited user testing for the new version of WebApp1 on VMSS1. Which three actions should you perform? Each correct answer presents part of the solution.

NOTE: Each correct selection is worth one point.

- A. Modify the load balancer settings of VMSS1.
- B. Redeploy VMSS1.
- C. Upload a custom script file to sa1.
- D. Modify the Custom Script extension settings of VMSS1.
- E. Update the configuration of a virtual machine in VMSS1.

Answer: BCD

NEW QUESTION 214

SIMULATION - (Topic 4)

You need to configure a virtual machine named VM1 to securely access stored secrets in an Azure Key Vault named az400-11566895-kv.

To complete this task, sign in to the Microsoft Azure portal.

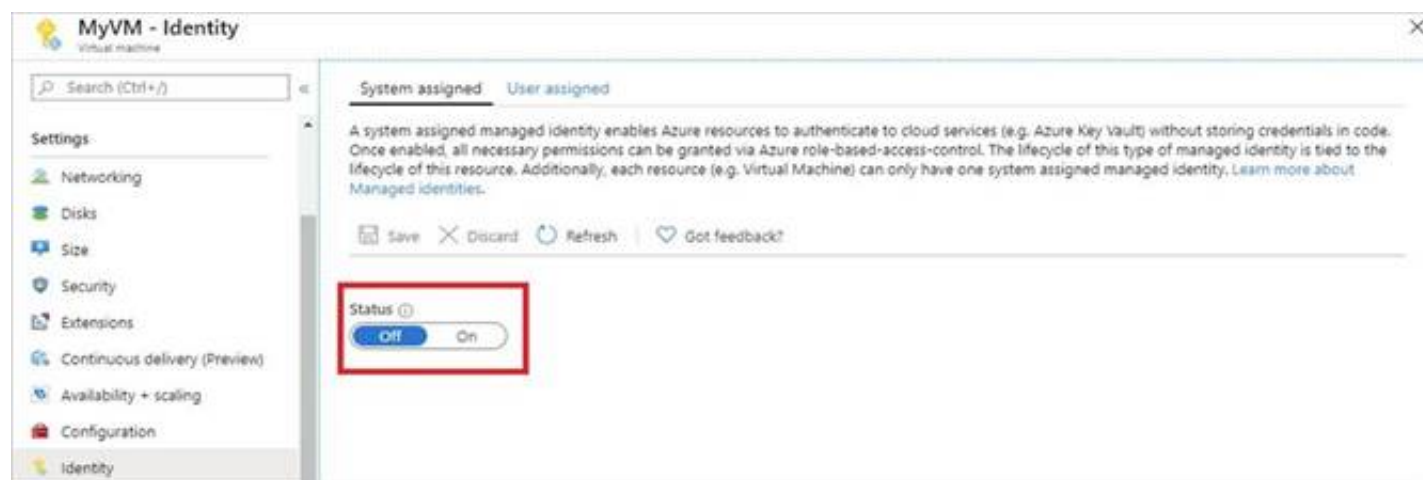
- A. Mastered
- B. Not Mastered

Answer: A

Explanation:

You can use a system-assigned managed identity for a Windows virtual machine (VM) to access Azure Key Vault.

- ? Sign in to Azure portal
- ? Locate virtual machine VM1.
- ? Select Identity
- ? Enable the system-assigned identity for VM1 by setting the Status to On.



Note: Enabling a system-assigned managed identity is a one-click experience. You can either enable it during the creation of a VM or in the properties of an existing VM.

NEW QUESTION 216

DRAG DROP - (Topic 4)

You have an Azure subscription that uses Azure Automation State Configuration to manage the configuration of virtual machines.

You need to identify which nodes are noncompliant.

How should you complete the query? To answer, drag the appropriate values to the correct targets. Each value may be used once, more than once, or not at all.

You may need to drag the split bar between panes or scroll to view content.

NOTE: Each correct selection is worth one point.

Values

Answer Area

Category	AzureDiagnostics
DscReportStatus	where <input type="text"/> == "DscNodeStatus"
Message	where <input type="text"/> contains ""
OperationName	where <input type="text"/> != "Compliant"
Resource	
ResultType	

- A. Mastered
- B. Not Mastered

Answer: A

Explanation:

<https://learn.microsoft.com/fr-fr/azure/automation/automation-dsc-diagnostics>

NEW QUESTION 221

- (Topic 4)

This question is part of a series of questions that present the same scenario. Each question in the series contains a unique solution that might meet the stated goals. Some question sets might have more than one correct solution, while others might not have a correct solution.

After you answer a question in this section, you will NOT be able to return to it. As a result, these questions will not appear in the review screen.

You have an Azure DevOps project.

Your build process creates several artifacts.

You need to deploy the artifacts to on-premises servers.

Solution: You deploy an Azure self-hosted agent to an on-premises server. You add a Copy and Publish Build Artifacts task to the deployment pipeline.

Does this meet the goal?

- A. Yes
- B. No

Answer: A

Explanation:

To build your code or deploy your software using Azure Pipelines, you need at least one agent.

If your on-premises environments do not have connectivity to a Microsoft-hosted agent pool (which is typically the case due to intermediate firewalls), you'll need to manually configure a self-hosted agent on on-premises computer(s). The agents must have connectivity to the target on-premises environments, and access to the Internet to connect to Azure Pipelines or Team Foundation Server.

References:

<https://docs.microsoft.com/en-us/azure/devops/pipelines/agents/agents?view=azure-devops>

NEW QUESTION 222

- (Topic 4)

Your company is concerned that when developers introduce open source libraries, it creates licensing compliance issues.

You need to add an automated process to the build pipeline to detect when common open source libraries are added to the code base.

What should you use?

- A. PDM

- B. OWASPZAP
- C. WhiteSource
- D. Jenkins

Answer: C

NEW QUESTION 224

DRAG DROP - (Topic 4)

You have a GitHub organization named org1 and an Azure tenant named Tenant1.

You need to enable single sign-on (SSO) in Azure Active Directory (Azure AD) for the users in org1.

Which URIs should you use for the SAML configuration in Azure AD? To answer, drag the appropriate URIs to the correct settings. Each URI may be used once, more than once, or not at all. You may need to drag the split bar between panes or scroll to view content.

NOTE: Each correct selection is worth one point.

URIs	Answer Area
<input type="text" value="https://github.com/orgs/org1"/>	
<input type="text" value="https://github.com/orgs/org1/sso"/>	Identifier (Entity ID): <input type="text"/>
<input type="text" value="https://login.microsoftonline.com/tenant1"/>	Reply URL (Assertion Consumer Service URL): <input type="text"/>
<input type="text" value="https://github.com/orgs/org1/saml/consume"/>	
<input type="text" value="https://login.microsoftonline.com/tenant1.com"/>	Sign on URL: <input type="text"/>

- A. Mastered
- B. Not Mastered

Answer: A

Explanation:

Graphical user interface, text, application Description automatically generated

NEW QUESTION 228

HOTSPOT - (Topic 4)

You have an Azure Kubernetes Service (AKS) pod.

You need to configure a probe to perform the following actions:

? Confirm that the pod is responding to service requests.

? Check the status of the pod four times a minute.

? Initiate a shutdown if the pod is unresponsive.

How should you complete the YAML configuration file? To answer, select the appropriate options in the answer area.

NOTE: Each correct selection is worth one point.

Answer Area

```
apiVersion: v1
kind: Pod
metadata:
  labels:
    test: readiness-and-liveness
  name: readiness-http
spec:
  containers:
  - name: container1
    image: k8s.gcr.io/readiness-and-liveness
    args:
    - /server
```

livenessProbe:

readinessProbe:

ShutdownProbe:

startupProbe:

```
    httpGet:
      path: /checknow
      port: 8123
      httpHeaders:
      - name: Custom-Header
        value: CheckNow
```

initialDelaySeconds: 15

periodSeconds: 15

timeoutSeconds: 15

- A. Mastered
- B. Not Mastered

Answer: A

Explanation:

Box 1: readiness Probe:

For containerized applications that serve traffic, you might want to verify that your container is ready to handle incoming requests. Azure Container Instances supports readiness probes to include configurations so that your container can't be accessed under certain conditions.

NEW QUESTION 231

- (Topic 4)

You have an app named App1 that uses Application Insights to monitor application performance.

You need to analyze how often a page in App1 is accessed. Which pane in Application Insights should you use?

- A. Events
- B. Sessions
- C. Impact
- D. Users

Answer: B

NEW QUESTION 233

- (Topic 4)

You have an Azure DevOps organization that contains a project named Project1. You need to create a published wiki in Project1.

What should you do first?

- A. Modify the Storage settings of Project1.
- B. In Project1, create an Azure DevOps pipeline.
- C. In Project1, create an Azure DevOps repository.
- D. Modify the Team configuration settings of Project1.

Answer: C

Explanation:

Reference:

<https://docs.microsoft.com/en-us/azure/devops/project/wiki/publish-repo-to-wiki?view=azure-devops&tabs=browser>

NEW QUESTION 235

- (Topic 4)

You are developing a multi-tier application. The application will use Azure App Service web apps as the front end and an Azure SQL database as the back end.

The application will use Azure functions to write some data to Azure Storage.

You need to send the Azure DevOps team an email message when the front end fails to return a status code of 200.

Which feature should you use?

- A. Service Map in Azure Log Analytics
- B. Profiler in Azure Application Insights
- C. availability tests in Azure Application Insights
- D. Application Map in Azure Application Insights

Answer: D

Explanation:

<https://docs.microsoft.com/en-us/azure/azure-monitor/app/monitor-web-app-availability>

NEW QUESTION 236

DRAG DROP - (Topic 4)

You need to configure access to Azure DevOps agent pools to meet the following requirements:

Use a project agent pool when authoring build or release pipelines. View the agent pool and agents of the organization.

Use the principle of least privilege.

Which role memberships are required for the Azure DevOps organization and the project? To answer, drag the appropriate role memberships to the correct targets. Each role membership may be used once, more than once, or not at all. You may need to drag the split bar between panes or scroll to view content.

NOTE: Each correct selection is worth one point.

Administrator	Organization:	<input type="text"/>
Reader	Project:	<input type="text"/>
Service Account		
User		

- A. Mastered
- B. Not Mastered

Answer: A

Explanation:

Box 1: Reader

Members of the Reader role can view the organization agent pool as well as agents. You typically use this to add operators that are responsible for monitoring the agents and their health.

Box 2: Service account

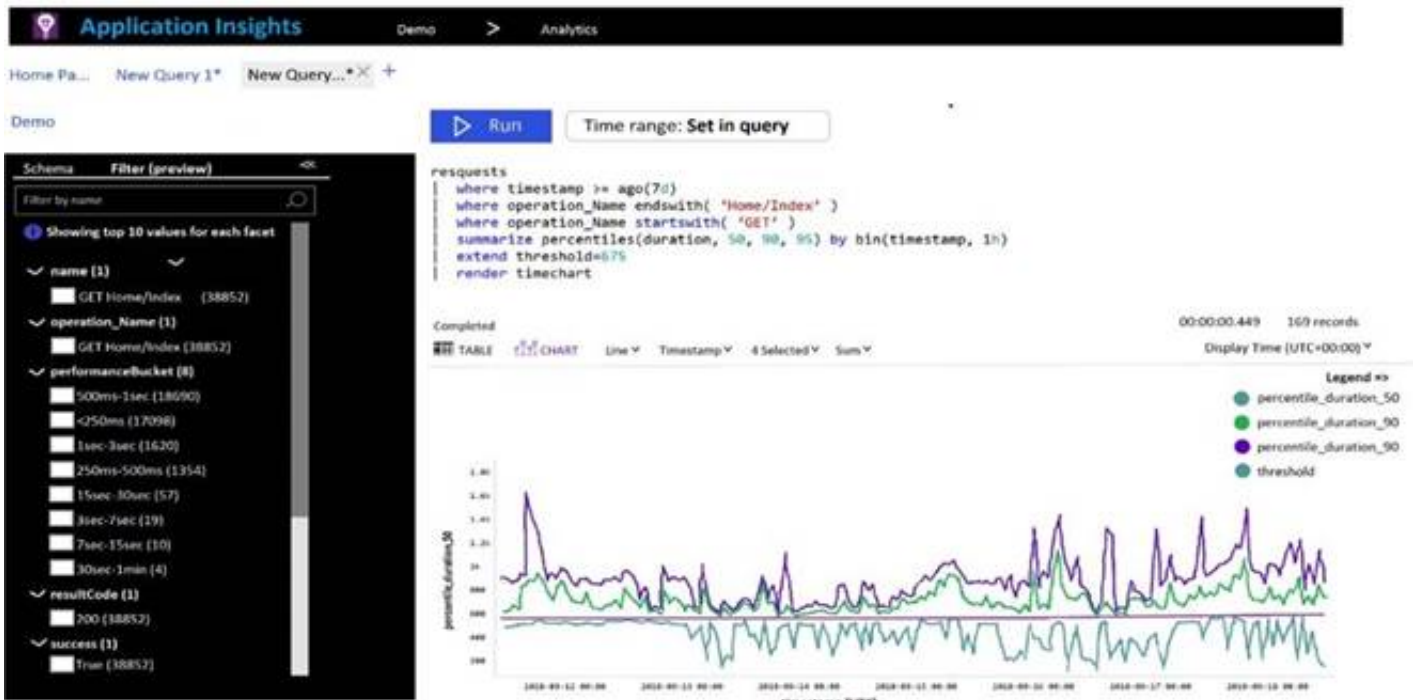
Members of the Service account role can use the organization agent pool to create a project agent pool in a project. If you follow the guidelines above for creating new project agent pools, you typically do not have to add any members here.

NEW QUESTION 237

HOTSPOT - (Topic 4)

You plan to create alerts that will be triggered based on the page load performance of a home page.

You have the Application Insights log query shown in the following exhibit.



Use the drop-down menus to select the answer choice that completes each statement based on the information presented in the graphic.
NOTE: Each correct selection is worth one point.

To create an alert based on the page load experience of most users, the alerting level must be based on [answer choice].

percentile_duration_50

percentile_duration_90

percentile_duration_95

threshold

To only create an alert when authentication error occurs on the server, the query must be filtered on [answer choice].

item Type

resultCode

source

success

- A. Mastered
- B. Not Mastered

Answer: A

Explanation:

Box 1: percentile_duration_95

Box 2: resultCode

NEW QUESTION 239

- (Topic 4)

Note: This question is part of a series of questions that present the same scenario. Each question in the series contains a unique solution that might meet the stated goals. Some question sets might have more than one correct solution, while others might not have a correct solution.

After you answer a question in this section, you will NOT be able to return to it. As a result, these questions will not appear in the review screen.

You have an Azure DevOps project.

Your build process creates several artifacts.

You need to deploy the artifacts to on-premises servers.

Solution: You deploy a Kubernetes cluster on-premises. You deploy a Helm agent to the cluster. You add a Download Build Artifacts task to the deployment pipeline. Does this meet the goal?

- A. Yes
- B. No

Answer: B

Explanation:

Instead you should deploy an Azure self-hosted agent to an on-premises server.
Note: To build your code or deploy your software using Azure Pipelines, you need at least one agent.
If your on-premises environments do not have connectivity to a Microsoft-hosted agent pool (which is typically the case due to intermediate firewalls), you'll need to manually configure a self-hosted agent on on-premises computer(s).
Note 2: As we [Microsoft] are launching this new experience in preview, we are currently optimizing it for Azure Kubernetes Service (AKS) and Azure Container Registry (ACR). Other Kubernetes clusters, for example running on-premises or in other clouds, as well as other container registries, can be used, but require setting up a Service Account and connection manually.
References:
<https://docs.microsoft.com/en-us/azure/devops/pipelines/agents/agents?view=azure-devops>

NEW QUESTION 243

- (Topic 4)
Note: This question is part of a series of questions that present the same scenario. Each question in the series contains a unique solution that might meet the stated goals. Some question sets might have more than one correct solution, while others might not have a correct solution.
After you answer a question in this section, you will NOT be able to return to it. As a result, these questions will not appear in the review screen.
You manage a project in Azure DevOps.
You need to prevent the configuration of the project from changing over time. Solution: Implement Continuous Integration for the project.
Does this meet the goal?

A. Yes
B. No

Answer: B

Explanation:

Instead implement Continuous Assurance for the project.
Reference:
<https://azsk.azurewebsites.net/04-Continous-Assurance/Readme.html>

NEW QUESTION 247

DRAG DROP - (Topic 4)
You have app named App1. You have a Log Analytics workspace named Workspace1 that contains two tables named Events and Logs. App1 manage events in multiple locations and writes logs to Workspace1.
You need to query Workspace1 for all log entries related to Asia that occurred during the last two days.
In which order should you arrange the query statements?

Statements

[Join (Events

[where continent == "Asia"

] on RequestId

[where Timestamp > ago(2d)

Logs

Answer Area

1

2

3

- A. Mastered
B. Not Mastered

Answer: A

Explanation:

Statements

[Join (Events

[where continent == "Asia"

] on RequestId

[where Timestamp > ago(2d)

Logs

Answer Area

1 [on RequestId

2 [where Timestamp > ago(2d)

3 Logs

NEW QUESTION 249

DRAG DROP - (Topic 4)
You have a project in Azure DevOps that uses packages from multiple public feeds. Some of the feeds are unreliable.
You need to consolidate the packages into a single feed.
Which three actions should you perform in sequence? To answer, move the appropriate actions from the list of actions to the answer area and arrange them in the correct order.

Actions

Create an npm package.

Create an Azure Artifacts feed that uses upstream sources.

Modify the configuration files to reference the Azure Artifacts feed.

Run an initial package restore.

Create a NuGet package.

Create a Microsoft Visual Studio project that includes all the packages.

Answer Area

⬅

⬅

⬅

⬅

⬅

⬅

- A. Mastered
B. Not Mastered

Answer: A

Explanation:

Step 1: Create a NuGet package.

NuGet and Maven are public package managers that support multiple feeds.

Step 2: Create an Azure Artifacts feed that uses upstream sources

If you want to use packages from multiple feeds, use upstream sources to bring packages from multiple feeds together into a single feed.

Step 3: Create a Microsoft Visual Studio project that includes all the packages

Consume NuGet packages from upstream sources: Now you can open Visual Studio and install packages from the upstream sources you just configured.

NEW QUESTION 254

DRAG DROP - (Topic 4)

DRAG DROP

You are developing a full Microsoft .NET Framework solution that includes unit tests. You need to configure SonarQube to perform a code quality validation of the C# code as

part of the build pipelines.

Which four tasks should you perform in sequence? To answer, move the appropriate tasks from the list of tasks to the answer area and arrange them in the correct order.

Actions Commands Cmdlets Statements	Answer Area
Run Code Analysis	
Visual Studio Test	
Publish Build Artifacts	
Visual Studio Build	
Prepare Analysis Configuration	

A. Mastered

B. Not Mastered

Answer: A

Explanation:

Step 1: Prepare Analysis Configuration

Prepare Analysis Configuration task, to configure all the required settings before executing the build.

This task is mandatory.

In case of .NET solutions or Java projects, it helps to integrate seamlessly with MSBuild, Maven and Gradle tasks.

Step 2: Visual Studio Build

Reorder the tasks to respect the following order:

Prepare Analysis Configuration task before any MSBuild or Visual Studio Build task.

Step 3: Visual Studio Test

Reorder the tasks to respect the following order:

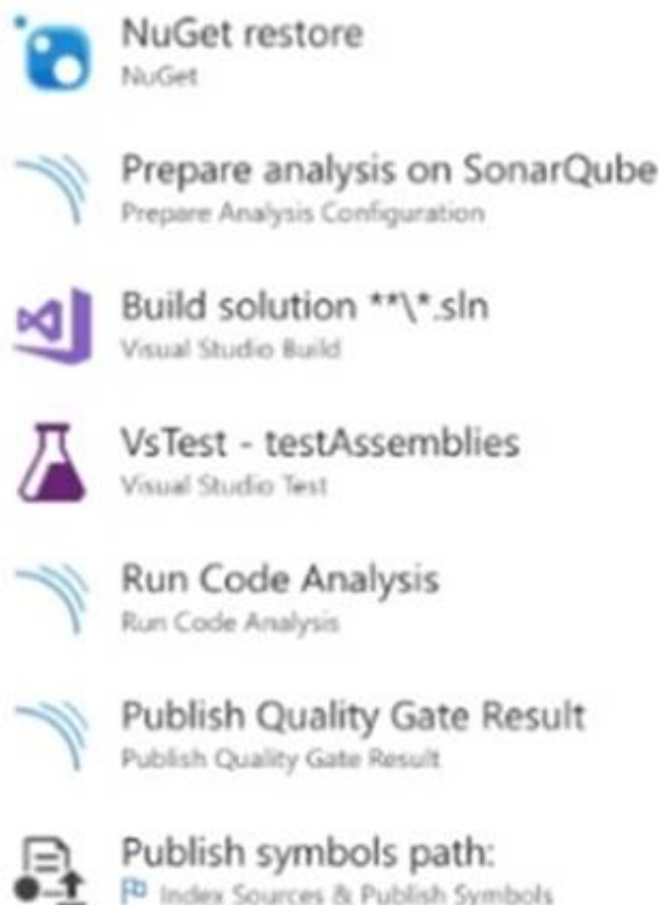
Run Code Analysis task after the Visual Studio Test task.

Step 4: Run Code Analysis

Run Code Analysis task, to actually execute the analysis of the source code.

This task is not required for Maven or Gradle projects, because scanner will be run as part of the Maven/Gradle build.

Note:



The image shows a list of tasks for configuring SonarQube in a build pipeline. Each task is represented by an icon, a title, and a subtitle. The tasks are: 1. NuGet restore (NuGet icon), 2. Prepare analysis on SonarQube (SonarQube icon, subtitle: Prepare Analysis Configuration), 3. Build solution ***.sln (Visual Studio icon, subtitle: Visual Studio Build), 4. VsTest - testAssemblies (Visual Studio Test icon), 5. Run Code Analysis (SonarQube icon, subtitle: Run Code Analysis), 6. Publish Quality Gate Result (SonarQube icon, subtitle: Publish Quality Gate Result), and 7. Publish symbols path: (Visual Studio icon, subtitle: Index Sources & Publish Symbols).

References: [https://docs.sonarqube.org/display/SCAN/Analyzing+with+SonarQube+Extension+for+VST S-TFS](https://docs.sonarqube.org/display/SCAN/Analyzing+with+SonarQube+Extension+for+VST+S-TFS)

NEW QUESTION 257

- (Topic 4)

Note: This question is part of a series of questions that present the same scenario. Each question in the series contains a unique solution that might meet the stated goals. Some question sets might have more than one correct solution, while others might not have a correct solution.

After you answer a question in this section, you will NOT be able to return to it. As a result, these questions will not appear in the review screen.

Your company has a prefect in Azure DevOps for a new web application. You need to ensure that when code is checked in, a build runs automatically.

Solution: from the Triggers tab of the build pipeline, you select Enable continuous integration

Does the meet the goal?

A. Yes

B. No

Answer: A

Explanation:

References:

<https://docs.microsoft.com/en-us/azure/devops/pipelines/get-started-designer>

NEW QUESTION 262

DRAG DROP - (Topic 4)

Your company wants to use Azure Application Insights to understand how user behaviors affect an application.

Which application Insights tool should you use to analyze each behavior? To answer, drag the appropriate tools to the correct behaviors. Each tool may be used once, more than once, or not at all. You may need to drag the split bar between panes or scroll to view content.

NOTE: Each correct selection is worth one point.

Tools	Answer Area
Impact	Feature usage: <input type="text"/>
User Flows	User actions by day: <input type="text"/>
Users	The effect that the performance of the application has on the usage of a page or a feature: <input type="text"/>

A. Mastered

B. Not Mastered

Answer: A

Explanation:

Box 1: User Flows

The User Flows tool visualizes how users navigate between the pages and features of your site. It's great for answering questions like:

How do users navigate away from a page on your site? What do users click on a page on your site?

Where are the places that users churn most from your site?

Are there places where users repeat the same action over and over? Box 2: Users

Box 3: Impact

NEW QUESTION 267

- (Topic 4)

Your company has an on-premises Bitbucket Server that is used for Git-based source control. The server is protected by a firewall that blocks inbound Internet traffic.

You plan to use Azure DevOps to manage the build and release processes Which two components are required to integrate Azure DevOps and Bitbucket? Each correct answer presents part of the solution.

NOTE: Each correct selection is worth one port.

A. an External Git service connection

B. a Microsoft hosted agent

C. service hooks

D. a self- hosted agent

E. a deployment M group

Answer: AD

Explanation:

When a pipeline uses a remote, 3rd-party repository host such as Bitbucket Cloud, the repository is configured with webhooks that notify Azure Pipelines Server or TFS when code has changed and a build should be triggered. Since on-premises installations are normally protected behind a firewall, 3rd-party webhooks are unable to reach the on- premises server. As a workaround, you can use the External Git repository type which uses polling instead of webhooks to trigger a build when code has changed.

References: <https://docs.microsoft.com/en-us/azure/devops/pipelines/repos/pipeline- options-for>

NEW QUESTION 270

DRAG DROP - (Topic 4)

You have a project in Azure DevOps named Project1 that contains two Azure DevOps pipelines named Pipeline1 and Pipeline2. You need to ensure that Pipeline1 can deploy code successfully to an Azure web app named webapp1. The solution must ensure that Pipeline2 does not have permission to webapp1. Which three actions should you perform in sequence? To answer, move the appropriate actions from the list of actions to the answer area and arrange them in the correct order.

Create a service principal in Azure Active Directory.

In Project1, create a service connection.

In Pipeline1, authorize the service connection.

Create a system-assigned managed identity in Azure Active Directory.

In Project1, configure permissions.

In Pipeline1, create a variable.

⬅

➡

⬆

⬇

- A. Mastered
- B. Not Mastered

Answer: A

Explanation:

Create a service principal in Azure Active Directory.

In Project1, create a service connection.

In Pipeline1, authorize the service connection.

Create a system-assigned managed identity in Azure Active Directory.

In Project1, configure permissions.

In Pipeline1, create a variable.

Create a service principal in Azure Active Directory.

In Project1, create a service connection.

In Project1, configure permissions.

NEW QUESTION 272

.....

THANKS FOR TRYING THE DEMO OF OUR PRODUCT

Visit Our Site to Purchase the Full Set of Actual AZ-400 Exam Questions With Answers.

We Also Provide Practice Exam Software That Simulates Real Exam Environment And Has Many Self-Assessment Features. Order the AZ-400 Product From:

<https://www.2passeasy.com/dumps/AZ-400/>

Money Back Guarantee

AZ-400 Practice Exam Features:

- * AZ-400 Questions and Answers Updated Frequently
- * AZ-400 Practice Questions Verified by Expert Senior Certified Staff
- * AZ-400 Most Realistic Questions that Guarantee you a Pass on Your FirstTry
- * AZ-400 Practice Test Questions in Multiple Choice Formats and Updatesfor 1 Year