

Exam Questions 350-401

Implementing and Operating Cisco Enterprise Network Core Technologies

<https://www.2passeasy.com/dumps/350-401/>



NEW QUESTION 1

Which DHCP option helps lightweight APs find the IP address of a wireless LAN controller?

- A. Option 43
- B. Option 60
- C. Option 67
- D. Option 150

Answer: A

NEW QUESTION 2

What is one fact about Cisco SD-Access wireless network deployments?

- A. The access point is part of the fabric underlay
- B. The WLC is part of the fabric underlay
- C. The access point is part the fabric overlay
- D. The wireless client is part of the fabric overlay

Answer: C

NEW QUESTION 3

Which algorithms are used to secure REST API from brute attacks and minimize the impact?

- A. SHA-512 and SHA-384
- B. MD5 algorithm-128 and SHA-384
- C. SHA-1, SHA-256, and SHA-512
- D. PBKDF2, BCrypt, and SCrypt

Answer: D

Explanation:

One of the best practices to secure REST APIs is using password hash. Passwords must always be hashed to protect the system (or minimize the damage) even if it is compromised in some hacking attempts. There are many such hashing algorithms which can prove really effective for password security e.g. PBKDF2, bcrypt and scrypt algorithms.

Other ways to secure REST APIs are: Always use HTTPS, Never expose information on URLs (Usernames, passwords, session tokens, and API keys should not appear in the URL),

Adding Timestamp in Request, Using OAuth, Input Parameter Validation.

NEW QUESTION 4

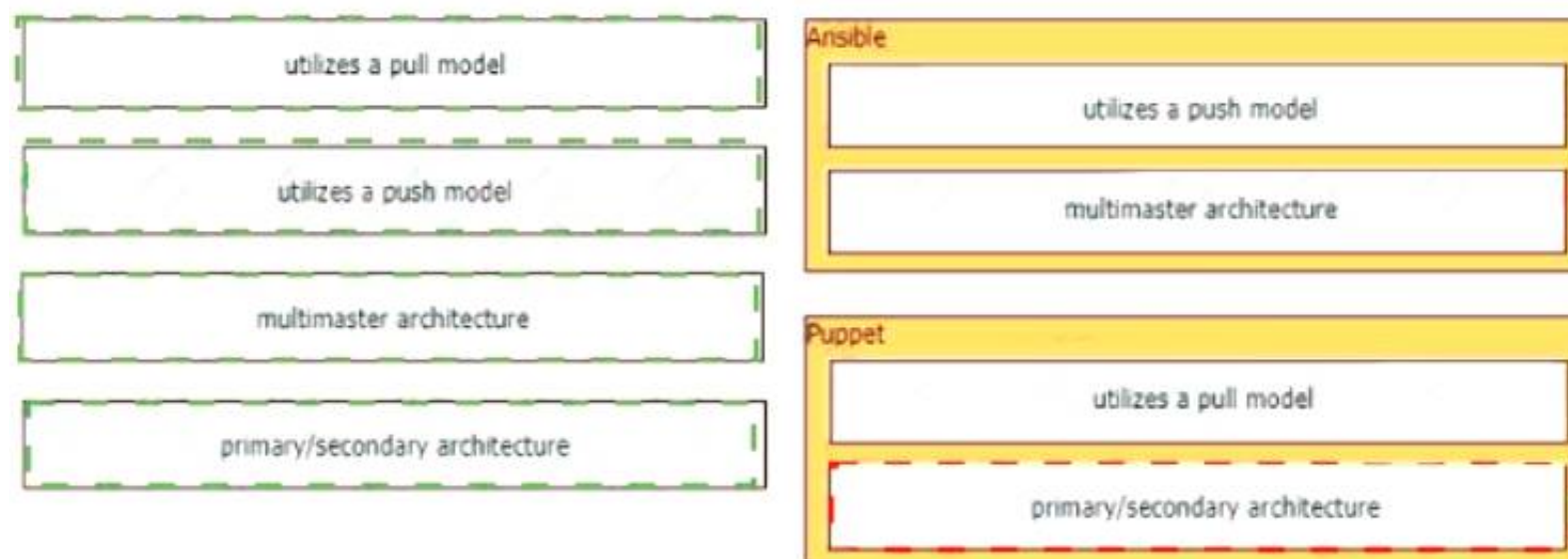
Drag and drop the characteristics from the left onto the orchestration tools they describe on the right.

utilizes a pull model	Ansible
utilizes a push model	
multimaster architecture	Puppet
primary/secondary architecture	

- A. Mastered
- B. Not Mastered

Answer: A

Explanation:



NEW QUESTION 5

What are two benefits of YANG? (Choose two.)

- A. It enables multiple leaf statements to exist within a leaf list
- B. It collects statistical constraint analysis information.
- C. It enforces configuration constraints.
- D. It enforces configuration semantics.
- E. It enforces the use of a specific encoding format for NETCONF

Answer: BE

NEW QUESTION 6

What are two benefits of virtual switching when compared to hardware switching? (Choose two.)

- A. increased MTU size
- B. hardware independence
- C. VM-level isolation
- D. increased flexibility
- E. extended 802.1Q VLAN range

Answer: CD

NEW QUESTION 7

What is YANG used for?

- A. scraping data via CLI
- B. processing SNMP read-only polls
- C. describing data models
- D. providing a transport for network configuration data between client and server

Answer: C

NEW QUESTION 8

Refer to the exhibit.

```
Router2# show policy-map control-plane

Control Plane
Service-policy input:CISCO
Class-map:CISCO (match-all)
  20 packets, 11280 bytes
  5 minute offered rate 0 bps, drop rate 0 bps
  Match:access-group 120
  police:
    8000 bps, 1500 limit, 1500 extended limit
    conformed 15 packets, 6210 bytes; action:transmit
    exceeded 5 packets, 5070 bytes; action:drop
    violated 0 packets, 0 bytes; action:drop
    conformed 0 bps, exceed 0 bps, violate 0 bps
Class-map:class-default (match-any)
  105325 packets, 11415151 bytes
  5 minute offered rate 0 bps, drop rate 0 bps
  Match:any
```

An engineer configures CoPP and enters the show command to verify the implementation. What is the result of the configuration?

- A. All traffic will be policed based on access-list 120.

- B. If traffic exceeds the specified rate, it will be transmitted and remarked.
- C. Class-default traffic will be dropped.
- D. ICMP will be denied based on this configuration.

Answer: A

NEW QUESTION 9

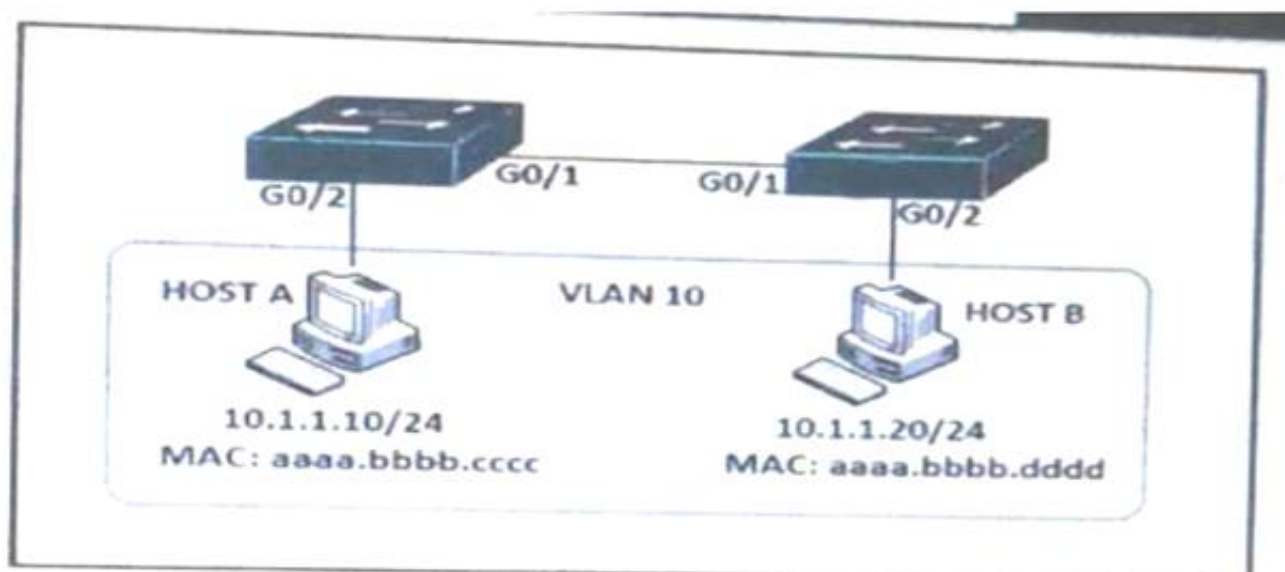
AN engineer is implementing a route map to support redistribution within BGP. The route map must be configured to permit all unmatched routes. Which action must the engineer perform to complete this task?

- A. Include a permit statement as the first entry
- B. Include at least one explicit deny statement
- C. Remove the implicit deny entry
- D. Include a permit statement as the last entry

Answer: D

NEW QUESTION 10

Refer to the exhibit.



An engineer must deny HTTP traffic from host A to host V while allowing all other communication between the hosts, drag and drop the commands into the configuration to achieve these results. Some commands may be used more than once. Not all commands are used.

```
SW1(config)# ip access-list extended DENY-HTTP
SW1(config-ext-nacl)#  tcp host 10.1.1.10 host 10.1.1.20 eq www

SW1(config)# ip access-list extended MATCH_ALL
SW1(config-ext-nacl)#  ip any any

SW1(config)# vlan access-map HOST-A-B 10
SW1(config-access-map)# match ip address DENY-HTTP
SW1(config-access-map)# 

SW1(config)# vlan access-map HOST-A-B 20
SW1(config-access-map)# match ip address MATCH_ALL
SW1(config-access-map)# 

SW1(config)# vlan filter HOST-A-B vlan 10
```

action drop
action forward
filter
permit
deny
match

- A. Mastered
- B. Not Mastered

Answer: A

Explanation:

Deny Permit Action drop
Action forward

NEW QUESTION 10

Which protocol does REST API rely on to secure the communication channel?

- A. TCP
- B. HTTPS

- C. SSH
- D. HTTP

Answer: B

Explanation:

The REST API accepts and returns HTTP (not enabled by default) or HTTPS messages that contain JavaScript Object Notation (JSON) or Extensible Markup Language (XML) documents. You can use any programming language to generate the messages and the JSON or XML documents that contain the API methods or Managed Object (MO) descriptions.

NEW QUESTION 15

Refer to the exhibit.

```
Router#sh| run | b vty

line vty 0 4
 session-timeout 30
 exec-timeout 20 0
 session-limit 30
 login local
line vty 5 15
 session-timeout 30
 exec-timeout 20 0
 session-limit 30
 login local
```

Security policy requires all idle-exec sessions to be terminated in 600 seconds. Which configuration achieves this goal?

- A. line vty 0 15absolute-timeout 600
- B. line vty 0 15 exec-timeout
- C. line vty 01 5exec-timeout 10 0
- D. line vty 0 4exec-timeout 600

Answer: B

NEW QUESTION 17

Refer to the exhibit.

PYTHON CODE	HTTP JSON Response
<pre>import requests import json url='http://YOURIP:8080' switchuser='USERID' switchpassword='PASSWORD' myheaders={'content-type': 'application/json'} payload={ "ins_api": { "version": "1.0", "type": "cli_show", "chunk": "0", "sid": "1", "input": "show version", "output_format": "json" } } response = requests.post(url,data=json.dumps(payload), headers=myheaders,auth=(switchuser,switchpassword)) json() print(response['ins_api']['outputs']['output']['body']['kickstart_ver_str'])</pre>	<pre>{ "ins_api": { "type": "cli_show", "version": "1.0", "sid": "eoc", "outputs": { "output": { "input": "show version", "msg": "Success", "code": "200", "body": { "bios_ver_str": "07.61", "kickstart_ver_str": "7.0(3)I7(4)", "bios_cmpt_time": "04/06/2017", "kick_file_name": "bootflash://nxos.7.0.3.I7.4.bin", "kick_cmpt_time": "6/14/1970 2:00:00", "kick_timestamp": "06/14/1970 09:49:04", "chassis_id": "Nexus9000 93180YC-FX chassis", "cpu_name": "Intel(R) Xeon(R) CPU @ 1.80GHz", "memory": 24633488, "mem_type": "kB", "tr_usec": 134703, "tr_ctime": "Sun Mar 10 15:41:46 2019", "tr_reason": "Reset Requested by CLI command reload", "tr_sys_ver": "7.0(3)I7(4)", "tr_service": "Cisco Systems, Inc.", "TABLE_package_list": { "ROW_package_list": { "package_id": 0 } } } } } } }</pre>

Which HTTP JSON response does the python code output give?

- A. NameError: name 'json' is not defined
- B. KeyError 'kickstart_ver_str'
- C. 7.61
- D. 7.0(3)I7(4)

Answer: D

NEW QUESTION 18

Which LISP component is required for a LISP site to communicate with a non-LISP site?

- A. ETR
- B. ITR
- C. Proxy ETR
- D. Proxy ITR

Answer: C

NEW QUESTION 23

Refer to the exhibit

```
{
  "Cisco-IOS-XE-native:GigabitEthernet": {
    "name": "1",
    "vrf": {
      "forwarding": "MANAGEMENT"
    },
    "ip": {
      "address": {
        "primary": {
          "address": "10.0.0.151",
          "mask": "255.255.255.0"
        }
      }
    },
    "mop": {
      "enabled": false
    },
    "Cisco-IOS-XE-ethernet:negotiation": {
      "auto": true
    }
  }
}
```

Drag and drop the snippets into the RESTCONF request to form the request that returns this response Not all options are used

URL - http://10.10.10.10/restconf/api/running/native/

HTTP Verb-

Body- N/A

Headers- -application/vnd.yang.data+json

Authentication-privileged level 15 credentials

POST

Accept

Cisco-IOS-XE

interface/GigabitEthernet/1/

GET

PUT

- A. Mastered
- B. Not Mastered

Answer: A

Explanation:

URL - http://10.10.10.10/restconf/api/running/native/

HTTP Verb-

GET

Body- N/A

Headers-

Accept

-application/vnd.yang.data+json

Authentication-privileged level 15 credentials

POST

Cisco-IOS-XE

PUT

NEW QUESTION 27

Which three elements determine Air Time efficiency? (Choose three)

- A. event-driven RRM
- B. data rate (modulation density) or QAM
- C. channel bandwidth
- D. number of spatial streams and spatial reuse
- E. RF group leader
- F. dynamic channel assignment

Answer: ACE

NEW QUESTION 32

Which HTTP code must be returned to prevent the script from exiting?

```
def get_token () :
    device_uri = "https://192.168.1.1/dna/system/api/v1/auth/token"
    http_result = requests.post(device_uri, auth = ("test", "test398810436!"))
    if http_result.status_code != requests.codes.ok:
        print ("Call failed! Review get_token () . ")
        sys.exit ()
    return (http_result.json () ["Token"])
```

- A. 200
- B. 201
- C. 300
- D. 301

Answer: D

NEW QUESTION 35

Drag and drop the characteristics from the left onto the routing protocols they describe on the right.

supports unequal path load balancing

link state routing protocol

distance vector routing protocol

metric is based on delay and bandwidth by default

makes it easy to segment the network logically

constructs three tables as part of its operation: neighbor table, topology table, and routing table

OSPF

EIGRP

- A. Mastered
- B. Not Mastered

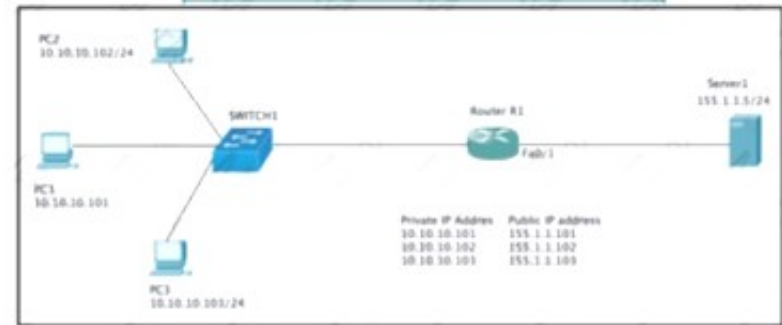
Answer: A

Explanation:

Diagram Description automatically generated

NEW QUESTION 37

Refer to the exhibit.



Which set of commands on router r R1 Allow deterministic translation of private hosts PC1, PC2, and PC3 to addresses in the public space?

```
A)
RouterR1(config)#int f0/0
RouterR1(config-if)#ip nat inside
RouterR1(config-if)#exit
RouterR1(config)#int f0/1
RouterR1(config-if)#ip nat outside
RouterR1(config-if)#exit
RouterR1(config)#ip nat inside source static 10.10.10.101 155.1.1.101
RouterR1(config)#ip nat inside source static 10.10.10.102 155.1.1.102
RouterR1(config)#ip nat inside source static 10.10.10.103 155.1.1.103
```

B)

```
RouterR1(config)#int f0/0
RouterR1(config-if)#ip nat inside
RouterR1(config-if)#exit
RouterR1(config)#int f0/1
RouterR1(config-if)#ip nat outside
RouterR1(config-if)#exit
RouterR1(config)#ip nat inside source static 10.10.10.101 155.1.1.101
RouterR1(config)#ip nat inside source static 10.10.10.102 155.1.1.102
RouterR1(config)#ip nat inside source static 10.10.10.103 155.1.1.103
```

C)

```
RouterR1(config)#int f0/0
RouterR1(config-if)#ip nat inside
RouterR1(config-if)#exit
RouterR1(config)#int f0/1
RouterR1(config-if)#ip nat outside
RouterR1(config-if)#exit
RouterR1(config)#access-list 1 10.10.10.0 0.0.0.255
RouterR1(config)#ip nat pool POOL 155.1.1.101 155.1.1.103 netmask 255.255.255.0
RouterR1(config)#ip nat inside source list 1 pool POOL
```

D)

```
RouterR1(config)#int f0/0
RouterR1(config-if)#ip nat inside
RouterR1(config-if)#exit
RouterR1(config)#int f0/1
RouterR1(config-if)#ip nat outside
RouterR1(config-if)#exit
RouterR1(config)#access-list 1 10.10.10.0 0.0.0.255
RouterR1(config)#ip nat inside source list 1 interface f0/1 overload
```

- A. Option A
- B. Option B
- C. Option C
- D. Option D

Answer: A

NEW QUESTION 42

What is used to perform OoS packet classification?

- A. the Options field in the Layer 3 header
- B. the Type field in the Layer 2 frame
- C. the Flags field in the Layer 3 header
- D. the TOS field in the Layer 3 header

Answer: D

NEW QUESTION 47

Refer to the exhibit.

```
<rpc-reply> [0, 1] required
<ok> [0, 1] required
<data> [0, 1] required
<rpc-error> [0, 1] required
<error-type> [0, 1] required
<error-tag> [0, 1] required
<error-severity> [0, 1] required
<error-app-tag> [0, 1] required
<error-path> [0, 1] required
<error-message> [0, 1] required
<error-info> [0, 1] required
<bad-attribute> [0, 1] required
<bad-element> [0, 1] required
<ok-element> [0, 1] required
<err-element> [0, 1] required
<noop-element> [0, 1] required
<bad-namespace> [0, 1] required
<session-id> [0, 1] required
```

Which command is required to verify NETCONF capability reply messages?

- A. show netconf | section rpc-reply
- B. show netconf rpc-reply
- C. show netconf xml rpc-reply
- D. show netconf schema | section rpc-reply

Answer: A

NEW QUESTION 50

Refer to the exhibit.

```
aaa new-model
aaa authentication login default local-case enable
aaa authentication login ADMIN local-case
username CCNP secret Str0ngP@ssw0rd!
line 0 4
  login authentication ADMIN
```

An engineer must create a configuration that executes the show run command and then terminates the session when user CCNP logs in. Which configuration change is required"

- A. Add the access-class keyword to the username command
- B. Add the access-class keyword to the aaa authentication command
- C. Add the autocmd keyword to the username command
- D. Add the autocmd keyword to the aaa authentication command

Answer: C

Explanation:

The autocmd causes the specified command to be issued automatically after the user logs in. When the command is complete, the session is terminated. Because the command can be any length and can contain embedded spaces, commands using the autocmd keyword must be the last option on the line. In this specific question, we have to enter this line username CCNP autocmd show running-config.

NEW QUESTION 53

Refer to the exhibit.

```
Extended IP access list EGRESS
10 permit ip 10.1.100.0 0.0.0.255 10.1.2.0 0.0.0.255
20 deny ip any any
```

An engineer must modify the access control list EGRESS to allow all IP traffic from subnet 10.1.10.0/24 to 10.1.2.1 /24. The access control list is applied in the outbound direction on router interface GigabitEthernet 0/1. Which configuration commands can the engineer use to allow this traffic without disrupting existing traffic flows?

- A)


```
config t
ip access-list extended EGRESS
permit ip 10.1.10.0 255.255.255.0 10.1.2.0 255.255.255.0
```
- B)


```
config t
ip access-list extended EGRESS
5 permit ip 10.1.10.0 0.0.0.255 10.1.2.0 0.0.0.255
```
- C)


```
config t
ip access-list extended EGRESS2
permit ip 10.1.10.0 0.0.0.255 10.1.2.0 0.0.0.255
permit ip 10.1.100.0 0.0.0.255 10.1.2.0 0.0.0.255
deny ip any any
!
interface g0/1
no ip access-group EGRESS out
ip access-group EGRESS2 out
```
- D)


```
config t
ip access-list extended EGRESS
permit ip 10.1.10.0 0.0.0.255 10.1.2.0 0.0.0.255
```

- A. Option A
- B. Option B
- C. Option C
- D. Option D

Answer: B

NEW QUESTION 58

Refer to the exhibit.

```
R1#show crypto isakmp sa
IPv4 Crypto ISAKMP SA
dst          src          state      conn-id  status
209.165.201.6 209.165.201.1 QM_IDLE    1001     ACTIVE
```

After configuring an IPsec VPN, an engineer enters the show command to verify the ISAKMP SA status. What does the status show?

- A. ISAKMP SA is authenticated and can be used for Quick Mode.
- B. Peers have exchanged keys, but ISAKMP SA remains unauthenticated.
- C. VPN peers agreed on parameters for the ISAKMP SA
- D. ISAKMP SA has been created, but it has not continued to form.

Answer: C

NEW QUESTION 61

An engineer runs the code against an API of Cisco DNA Center, and the platform returns this output What does the response indicate?

```
import requests
import sys
import urllib3

urllib3.disable_warnings(urllib3.exceptions.InsecureRequestWarning)

def main():
    device_uri = "https://192.168.1.1/dna/system/api/v1/auth/token"
    http_result = requests.get(device_uri, auth=("root", "test398586070!"))
    print(http_result)
    if http_result.status_code != requests.codes.ok:
        print('Call failed! Review get_token() . ')
        sys.exit()
    print(http_result.json()["Token"])

if __name__ == "__main__":
    sys.exit(main())
```

Output

```
$ python get_token.py
<Response [405]>
Call failed! Review get_token ().
```

- A. The authentication credentials are incorrect
- B. The URI string is incorrect.
- C. The Cisco DNA Center API port is incorrect
- D. The HTTP method is incorrect

Answer: A

NEW QUESTION 65

What is one difference between saltstack and ansible?

- A. SaltStack uses an API proxy agent to program Cisco boxes on agent mode, whereas Ansible uses a Telnet connection
- B. SaltStack uses the Ansible agent on the box, whereas Ansible uses a Telnet server on the box
- C. SaltStack is constructed with minion, whereas Ansible is constructed with YAML
- D. SaltStack uses SSH to interact with Cisco devices, whereas Ansible uses an event bus

Answer: A

NEW QUESTION 70

Which congestion queuing method on Cisco IOS based routers uses four static queues?

- A. Priority
- B. custom
- C. weighted fair
- D. low latency

Answer: A

NEW QUESTION 75

Which data is properly formatted with JSON?

- A)

```
{
  "name": "Peter",
  "age": "25",
  "likesJson": true,
  "characteristics": ["small", "strong", 18]
}
```

B)

```
{
  "name": "Peter",
  "age": "25",
  "likesJson": true,
  "characteristics": ["small", "strong", "18"],
}
```

C)

```
{
  "name": "Peter"
  "age": "25"
  "likesJson": true
  "characteristics": ["small", "strong", 18]
}
```

D)

```
{
  "name": Peter,
  "age": 25,
  "likesJson": true,
  "characteristics": ["small", "strong", "18"],
}
```

- A. Option A
- B. Option B
- C. Option C
- D. Option D

Answer: A

NEW QUESTION 80

An engineer has deployed a single Cisco 5520 WLC with a management IP address of 172.16.50.5/24. The engineer must register 50 new Cisco AIR-CAP2802I-E-K9 access points to the WLC using DHCP option 43. The access points are connected to a switch in VLAN 100 that uses the 172.16.100.0/24 subnet. The engineer has configured the DHCP scope on the switch as follows:

```
Network 172.16.100.0 255.255.255.0
Default Router 172.16.100.1
Option 43 Ascii 172.16.50.5
```

The access points are failing to join the wireless LAN controller. Which action resolves the issue?

- A. configure option 43 Hex F104.AC10.3205
- B. configure option 43 Hex F104.CA10.3205
- C. configure dns-server 172.16.50.5
- D. configure dns-server 172.16.100.1

Answer: B

NEW QUESTION 83

Refer to the exhibit.



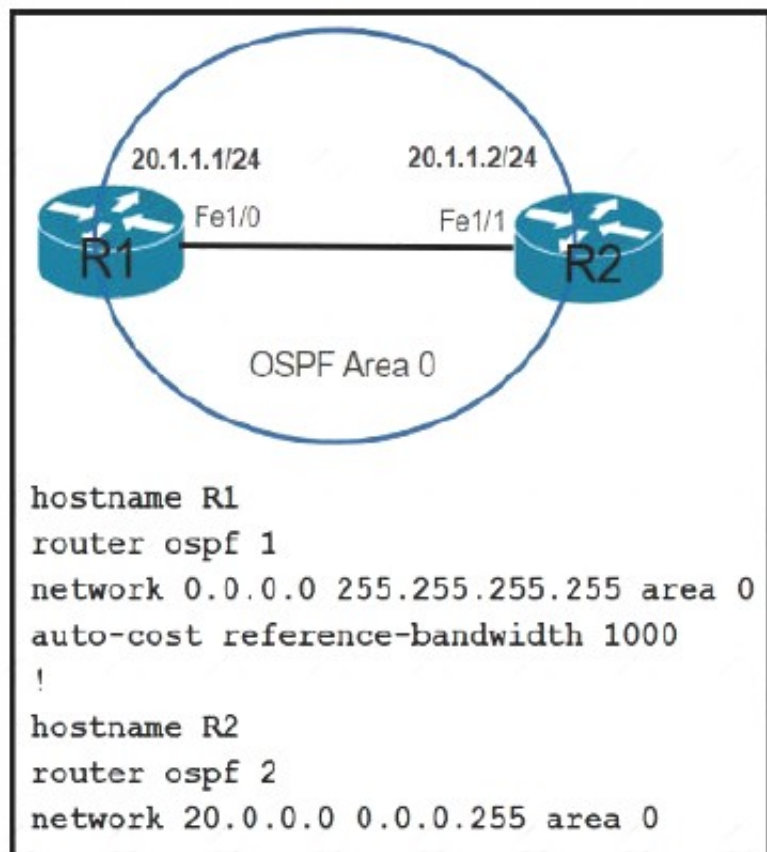
An engineer attempts to configure a trunk between switch sw1 and switch SW2 using DTP, but the trunk does not form. Which command should the engineer apply to switch SW2 to resolve this issue?

- A. switchport mode dynamic desirable
- B. switchport nonegotiate
- C. no switchport
- D. switchport mode access

Answer: A

NEW QUESTION 87

Which command must be applied to R2 for an OSPF neighborship to form?



- A. network 20.1.1.2.0.0.0.0 area 0
- B. network 20.1.1.2 255.255.0.0. area 0
- C. network 20.1.1.2.0.0.255.255 area 0
- D. network 20.1.1.2 255.255.255 area 0

Answer: A

Explanation:

The network 20.0.0.0 0.0.0.255 area 0 command on R2 did not cover the IP address of Fa1/1 interface of R2 so OSPF did not run on this interface. Therefore we have to use the command network 20.1.1.2 0.0.255.255 area 0 to turn on OSPF on this interface.

Note: The command network 20.1.1.2 0.0.255.255 area 0 can be used too so this answer is also correct but answer C is the best answer here.

The network 0.0.0.0 255.255.255.255 area 0 command on R1 will run OSPF on all active

NEW QUESTION 88

Which two components are supported by LISP? (Choose two.)

- A. Proxy ETR
- B. egress tunnel router
- C. route reflector
- D. HMAC algorithm
- E. spoke

Answer: AB

NEW QUESTION 89

A network engineer must configure a router to send logging messages to a syslog server based on these requirements:

- > uses syslog IP address: 10.10.10.1
- > uses a reliable protocol
- > must not use any well-known TCP/UDP ports

Which configuration must be used?

- A. logging host 10.10.10.1 transport tcp port 1024
- B. logging origin-id 10.10.10.1
- C. logging host 10.10.10.1 transport udp port 1023
- D. logging host 10.10.10.1 transport udp port 1024

Answer: A

NEW QUESTION 94

What is the data policy in a Cisco SD-WAN deployment?

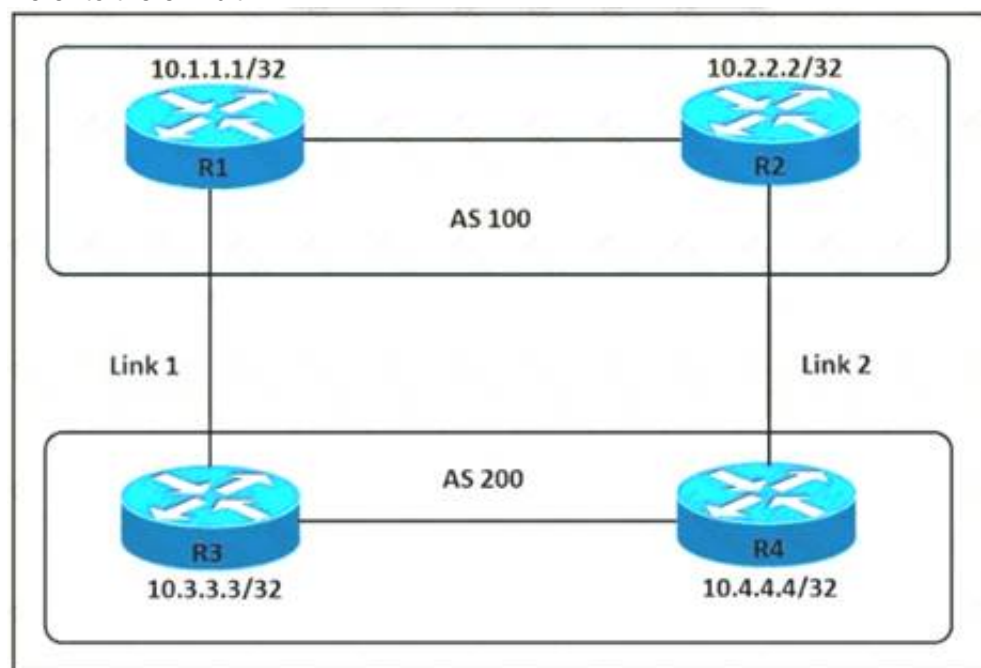
- A. list of ordered statements that define node configurations and authentication used within the SD-WAN overlay

- B. Set of statements that defines how data is forwarded based on IP packet information and specific VPNs
- C. detailed database mapping several kinds of addresses with their corresponding location
- D. group of services tested to guarantee devices and links liveliness within the SD-WAN overlay

Answer: B

NEW QUESTION 97

Refer to the exhibit.



An engineer must ensure that all traffic leaving AS 200 will choose Link 2 as an entry point. Assuming that all BGP neighbor relationships have been formed and that the attributes have not been changed on any of the routers, which configuration accomplish task?

- ☐ R3(config)#route-map PREPEND permit 10
R3(config-route-map)#set as-path prepend 200 200 200
- ☐ R3(config)#router bgp 200
R3(config-router)#neighbor 10.1.1.1 route-map PREPEND out
- ☐ R4(config)#route-map PREPEND permit 10
R4(config-route-map)#set as-path prepend 100 100 100
- ☐ R4(config)#router bgp 200
R4(config-router)#neighbor 10.2.2.2 route-map PREPEND in
- ☐ R3(config)#route-map PREPEND permit 10
R3(config-route-map)#set as-path prepend 100 100 100
- ☐ R3(config)#router bgp 200
R3(config-router)#neighbor 10.1.1.1 route-map PREPEND in
- ☐ R4(config)#route-map PREPEND permit 10
R4(config-route-map)#set as-path prepend 200 200 200
- ☐ R4(config)#router bgp 200
R4(config-router)#neighbor 10.2.2.2 route-map PREPEND out

- A. Option A
- B. Option B
- C. Option C
- D. Option D

Answer: A

Explanation:

R3 advertises BGP updates to R1 with multiple AS 100 so R3 believes the path to reach AS 200 via R3 is farther than R2 so R3 will choose R2 to forward traffic to AS 200.

NEW QUESTION 99

What is the purpose of the LISP routing and addressing architecture?

- A. It creates two entries for each network node, one for its identity and another for its location on the network.
- B. It allows LISP to be applied as a network visualization overlay through encapsulation.
- C. It allows multiple Instances of a routing table to co-exist within the same router.
- D. It creates head-end replication used to deliver broadcast and multicast frames to the entire network.

Answer: A

NEW QUESTION 100

A network is being migrated from IPV4 to IPV6 using a dual-stack approach. Network management is already 100% IPV6 enabled. In a dual-stack network with two dual-stack NetFlow collections, how many flow exporters are needed per network device in the flexible NetFlow configuration?

- A. 1
- B. 2
- C. 4
- D. 8

Answer: B

NEW QUESTION 105

A customer has recently implemented a new wireless infrastructure using WLC-5520 at a site directly next to a large commercial airport. Users report that they intermittently lose WI-FI connectivity, and troubleshooting reveals it is due to frequent channel changes. Which two actions fix this issue? (Choose two)

- A. Remove UNII-2 and Extended UNII-2 channels from the 5 Ghz channel list
- B. Restore the DCA default settings because this automatically avoids channel interference.
- C. Configure channels on the UNII-2 and the Extended UNII-2 sub-bands of the 5 Ghz band only
- D. Enable DFS channels because they are immune to radar interference.
- E. Disable DFS channels to prevent interference with Doppler radar

Answer: AE

NEW QUESTION 108

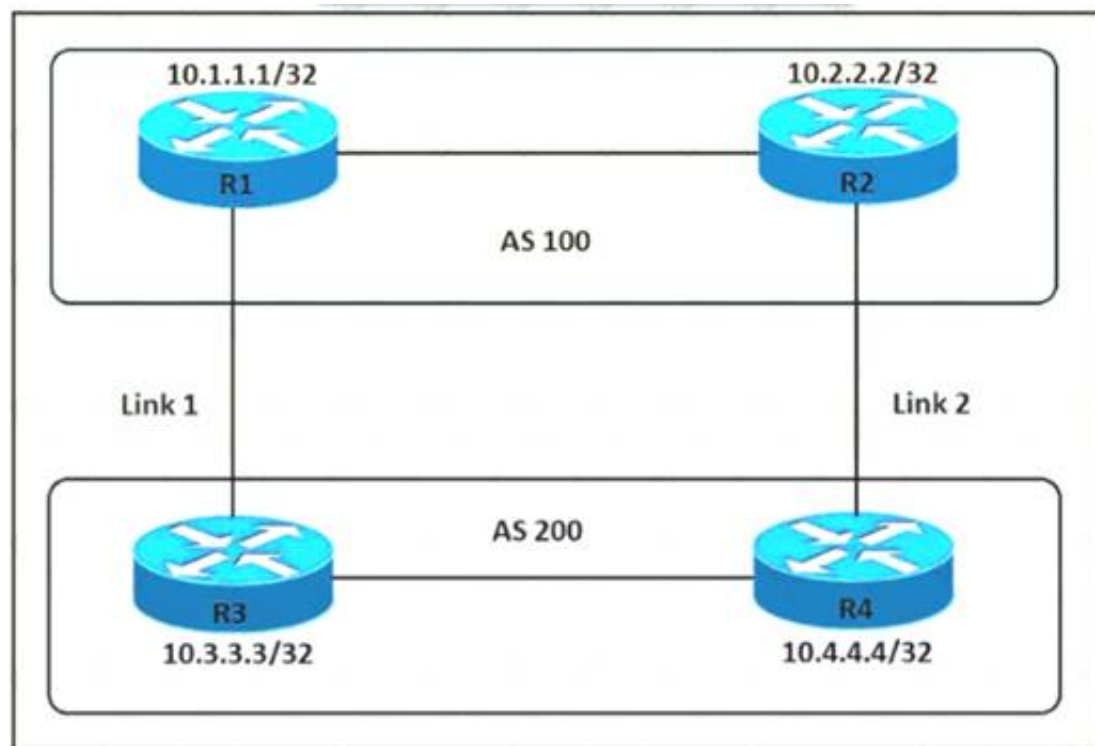
What is the recommended MTU size for a Cisco SD-Access Fabric?

- A. 1500
- B. 9100
- C. 4464
- D. 17914

Answer: B

NEW QUESTION 111

Refer to the exhibit.



An engineer must ensure that all traffic leaving AS 200 will choose Link 2 as the exit point. Assuming that all BGP neighbor relationships have been formed and that the attributes have not been changed on any of the routers, which configuration accomplish task?

- A. R4(config-router)bgp default local-preference 200
- B. R3(config-router)neighbor 10.1.1.1 weight 200
- C. R3(config-router)bgp default local-preference 200
- D. R4(config-router)nighbor 10.2.2.2 weight 200

Answer: A

Explanation:

Local preference is an indication to the AS about which path has preference to exit the AS in order to reach a certain network. A path with a higher local preference is preferred. The default value for local preference is 100.

Unlike the weight attribute, which is only relevant to the local router, local preference is an attribute that routers exchange in the same AS. The local preference is set with the “bgp default local-preference value” command.

In this case, both R3 & R4 have exit links but R4 has higher local-preference so R4 will be chosen as the preferred exit point from AS 200.

NEW QUESTION 113

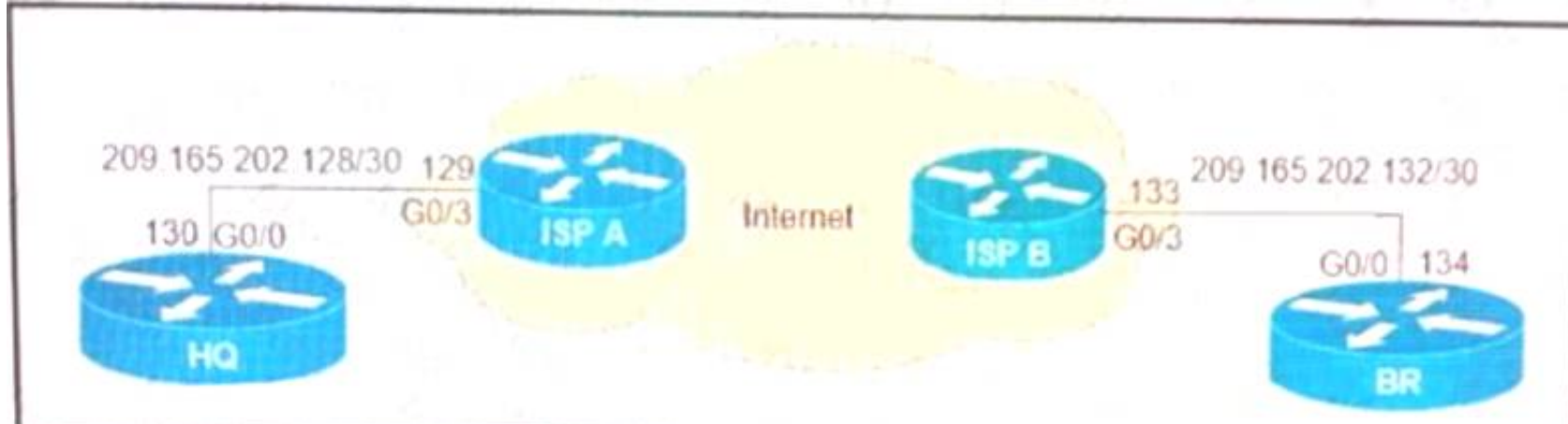
Which cisco DNA center application is responsible for group-based accesss control permissions?

- A. Design
- B. Provision
- C. Assurance
- D. Policy

Answer: D

NEW QUESTION 115

Refer to the exhibit.



What is the effect of these commands on the BR and HQ tunnel interfaces?

```
BR(config)#interface tunnel1
BR(config-if)#keepalive 5 3
```

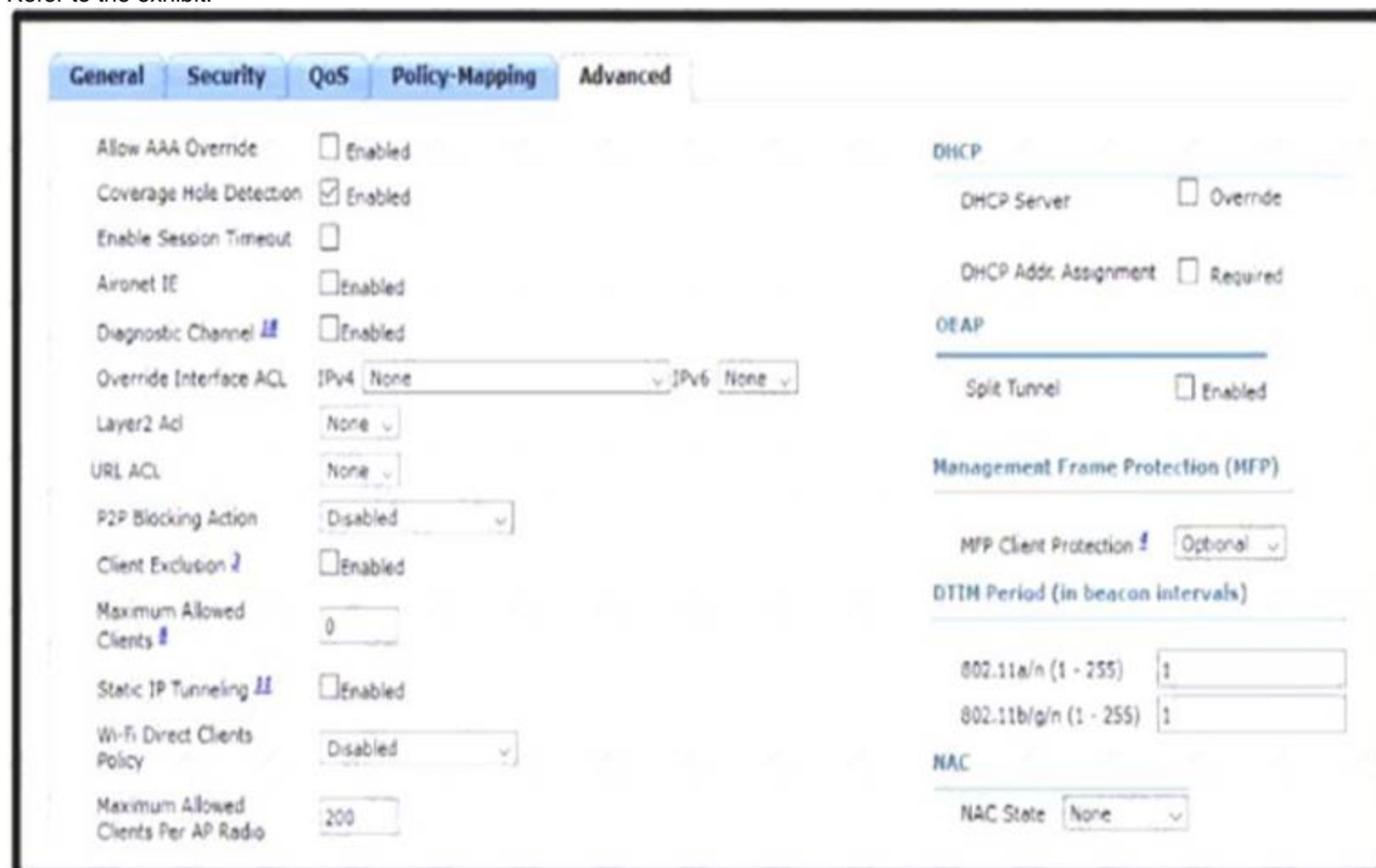
```
HQ(config)#interface tunnel1
HQ(config-if)#keepalive 5 3
```

- A. The tunnel line protocol goes down when the keepalive counter reaches 6
- B. The keepalives are sent every 5 seconds and 3 retries
- C. The keepalives are sent every 3 seconds and 5 retries
- D. The tunnel line protocol goes down when the keepalive counter reaches 5

Answer: B

NEW QUESTION 120

Refer to the exhibit.



An engineer is investigating why guest users are able to access other guest user devices when the users are connected to the customer guest WLAN. What action resolves this issue?

- A. implement MFP client protection
- B. implement split tunneling
- C. implement P2P blocking
- D. implement Wi-Fi direct policy

Answer: B

Explanation:

<https://www.cisco.com/c/en/us/td/docs/wireless/controller/8-1/configurationguide>

NEW QUESTION 121

How cloud deployments differ from on-prem deployments?

- A. Cloud deployments require longer implementation times than on-premises deployments

- B. Cloud deployments are more customizable than on-premises deployments.
- C. Cloud deployments require less frequent upgrades than on-premises deployments.
- D. Cloud deployments have lower upfront costs than on-premises deployments.

Answer: B

NEW QUESTION 126

A server running Linux is providing support for virtual machines along with DNS and DHCP services for a small business. Which technology does this represent?

- A. container
- B. Type 1 hypervisor
- C. hardware pass-thru
- D. Type 2 hypervisor

Answer: D

NEW QUESTION 128

What are two characteristics of VXLAN? (Choose two)

- A. It uses VTEPs to encapsulate and decapsulate frames.
- B. It has a 12-bit network identifier
- C. It allows for up to 16 million VXLAN segments
- D. It lacks support for host mobility
- E. It extends Layer 2 and Layer 3 overlay networks over a Layer 2 underlay.

Answer: AC

NEW QUESTION 130

Refer to the exhibit.

```
Router#show ip ospf interface
GigabitEthernet0/1.40 is up, line protocol is up
  Internet Address 10.3.5.254/24, Area 0, Attached via Network Statement
  Process ID 1, Router ID 172.16.11.29, Network Type BROADCAST, Cost: 1
  Topology-MTID Cost Disabled Shutdown Topology Name
    0          1      no      no      Base
  Transmit Delay is 1 sec, State DR, Priority 1
  Designated Router (ID) 172.16.11.29, Interface address 10.3.5.254
  No backup designated router on this network
  Timer intervals configured, Hello 10, Dead 40, Wait 40, Retransmit 5
    oob-resync timeout 40
  No Hellos (Passive interface)
  Supports Link-local Signaling (LLS)
  ! lines omitted for brevity
GigabitEthernet0/1 is up, line protocol is up
  Internet Address 172.16.30.1/24, Area 0, Attached via Network Statement
  Process ID 1, Router ID 172.16.11.29, Network Type BROADCAST, Cost: 1
  Topology-MTID Cost Disabled Shutdown Topology Name
    0          1      no      no      Base
  Transmit Delay is 1 sec, State DR, Priority 1
  Designated Router (ID) 172.16.11.29, Interface address 172.16.30.1
  No backup designated router on this network
  Timer intervals configured, Hello 10, Dead 40, Wait 40, Retransmit 5
    oob-resync timeout 40
  No Hellos (Passive interface)
  Supports Link-local Signaling (LLS)
  ! lines omitted for brevity
GigabitEthernet0/0 is up, line protocol is up
  Internet Address 172.16.11.29/24, Area 0, Attached via Network Statement
  Process ID 1, Router ID 172.16.11.29, Network Type BROADCAST, Cost: 1
  Topology-MTID Cost Disabled Shutdown Topology Name
    0          1      no      no      Base
  Transmit Delay is 1 sec, State DROTHER, Priority 1
  Designated Router (ID) 172.16.11.27, Interface address 172.16.11.27
  Backup Designated router (ID) 172.16.11.30, Interface address 172.16.11.30
  Timer intervals configured, Hello 10, Dead 40, Wait 40, Retransmit 5
    oob-resync timeout 40
  Hello due in 00:00:07
  Supports Link-local Signaling (LLS)
  ! lines omitted for brevity
```

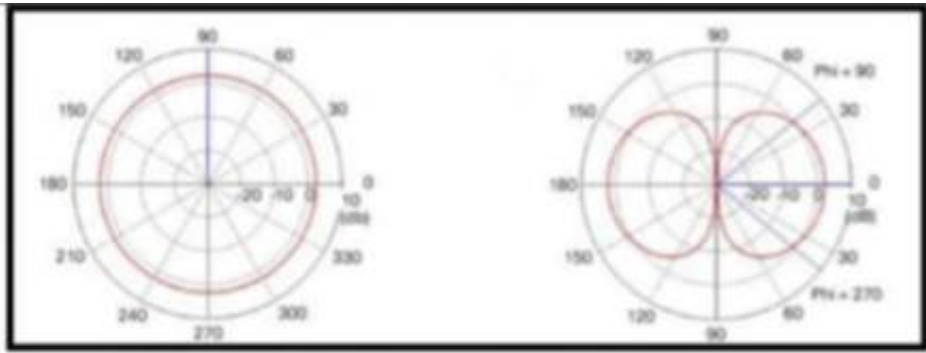
A network engineer configures OSPF and reviews the router configuration. Which interface or interface or interface are able to establish OSPF adjacency?

- A. GigabitEthernet0/1 and GigabitEthernet0/1.40
- B. only GigabitEthernet0/1
- C. only GigabitEthernet0/0
- D. Gigabit Ethernet0/0 and GigabitEthernet0/1

Answer: C

NEW QUESTION 134

Refer to the exhibit.



Which type of antenna is show on the radiation patterns?

- A. Dipole
- B. Yagi
- C. Patch
- D. Omnidirectional

Answer: A

NEW QUESTION 139

What is a fact about Cisco EAP-FAST?

- A. It does not require a RADIUS server certificate.
- B. It requires a client certificate.
- C. It is an IETF standard.
- D. It operates in transparent mode.

Answer: A

NEW QUESTION 143

How is 802.11 traffic handled in a fabric-enabled SSID?

- A. centrally switched back to WLC where the user traffic is mapped to a VXLAN on the WLC
- B. converted by the AP into 802.3 and encapsulated into VXLAN
- C. centrally switched back to WLC where the user traffic is mapped to a VLAN on the WLC
- D. converted by the AP into 802.3 and encapsulated into a VLAN

Answer: B

NEW QUESTION 147

Which outbound access list, applied to the WAN interface of a router, permits all traffic except for http traffic sourced from the workstation with IP address 10.10.10.1?

- A)

```
ip access-list extended 100
deny tcp host 10.10.10.1 any eq 80
permit ip any any
```
- B)

```
ip access-list extended 200
deny tcp host 10.10.10.1 eq 80 any
permit ip any any
```
- C)

```
ip access-list extended NO_HTTP
deny tcp host 10.10.10.1 any eq 80
```
- D)

```
ip access-list extended 10
deny tcp host 10.10.10.1 any eq 80
permit ip any any
```

- A. Option A
- B. Option B
- C. Option C
- D. Option D

Answer: A

NEW QUESTION 151

Refer to the exhibit.

```
Switch2#
01:25:08: %PM-4-ERR_DISABLE: channel-misconfig error detected on
Fa0/23, putting Fa0/23 in err-disable
state
01:25:08: %PM-4-ERR_DISABLE: channel-misconfig error detected on
Fa0/24, putting Fa0/24 in err-disable
state
Switch2#
```

```
Switch1#show etherchannel summary
```

```
!output omitted
```

Group	Port-channel	Protocol	Ports
1	Po2(SD)	LACP	Fa1/0/23(D)

```
Switch2#show etherchannel summary
```

```
!output omitted
```

Group	Port-channel	Protocol	Ports
1	Po1(SD)	-	Fa0/23(D) Fa0/24(D)

An engineer is configuring an EtherChannel between Switch1 and Switch2 and notices the console message on switch2. Based on the output, which action resolves this issue?

- A. Configure less member ports on Switch2.
- B. Configure the same port channel interface number on both switches
- C. Configure the same EtherChannel protocol on both switches
- D. Configure more member ports on Switch1.

Answer: A

NEW QUESTION 152

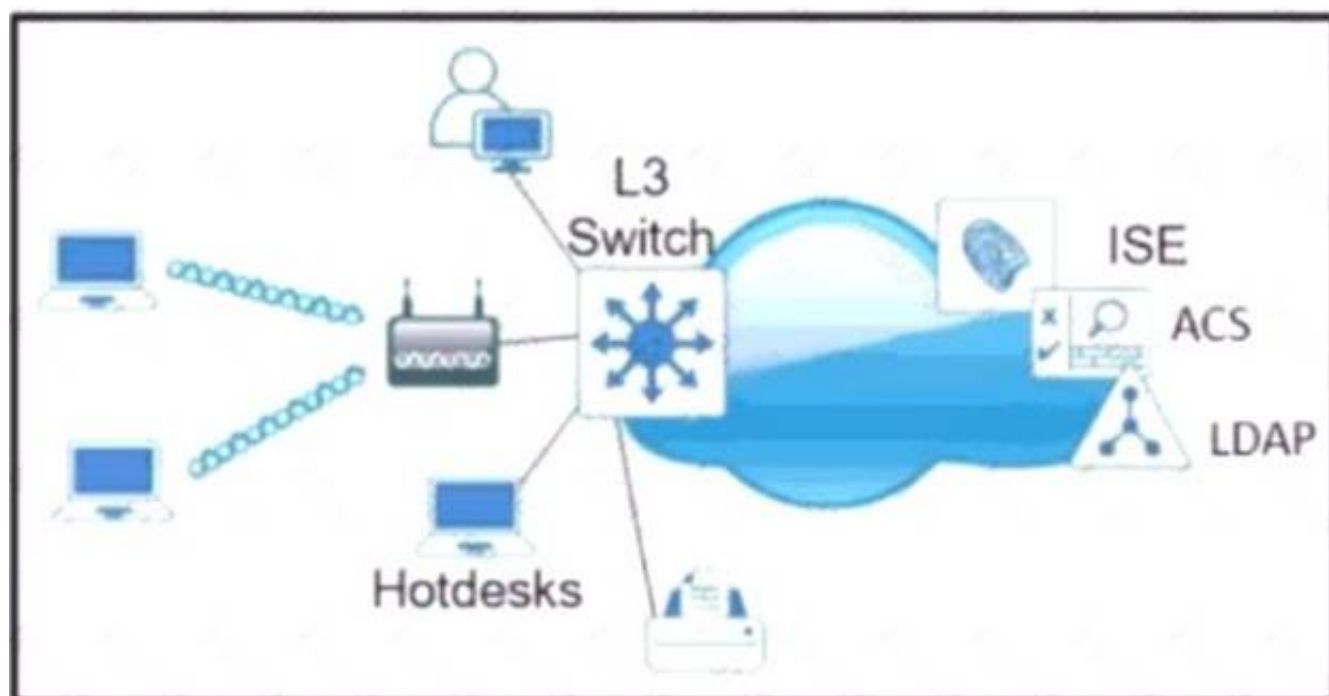
Which technology is used as the basis for the cisco sd-access data plane?

- A. IPsec
- B. LISP
- C. VXLAN
- D. 802.1Q

Answer: C

NEW QUESTION 154

Refer to the exhibit



Which single security feature is recommended to provide Network Access Control in the enterprise?

- A. MAB
- B. 802.1X
- C. WebAuth
- D. port security sticky MAC

Answer: B

NEW QUESTION 156

Graphical user interface, text, application, email Description automatically generated

```
Script

import ncclient

with ncclient.manager.connect(host='192.168.1.1', port=830, username='root', password='test123!',
    allow_agent=False) as m:
    print(m.get_config('running').data_xml)

Output

$ python get_config.py
Traceback (most recent call last):
  File "get_config.py", line 3, in <module>
    with ncclient.manager.connect(host='192.168.1.1', port=830, username='root',
AttributeError: 'module' object has no attribute 'manager'
```

Refer to the Exhibit. Running the script causes the output in the exhibit. What should be the first line of the script?

- A. from ncclient import manager
- B. import manager
- C. from ncclient import *
- D. ncclient manager import

Answer: C

NEW QUESTION 158

.....

THANKS FOR TRYING THE DEMO OF OUR PRODUCT

Visit Our Site to Purchase the Full Set of Actual 350-401 Exam Questions With Answers.

We Also Provide Practice Exam Software That Simulates Real Exam Environment And Has Many Self-Assessment Features. Order the 350-401 Product From:

<https://www.2passeasy.com/dumps/350-401/>

Money Back Guarantee

350-401 Practice Exam Features:

- * 350-401 Questions and Answers Updated Frequently
- * 350-401 Practice Questions Verified by Expert Senior Certified Staff
- * 350-401 Most Realistic Questions that Guarantee you a Pass on Your FirstTry
- * 350-401 Practice Test Questions in Multiple Choice Formats and Updatesfor 1 Year