

Exam Questions AZ-801

Configuring Windows Server Hybrid Advanced Services

<https://www.2passeasy.com/dumps/AZ-801/>



NEW QUESTION 1

- (Exam Topic 3)

You have five Azure virtual machines.

You need to collect performance data and Windows Event logs from the virtual machines. The data collected must be sent to an Azure Storage account.

What should you install on the virtual machines?

- A. the Azure Connected Machine agent
- B. the Azure Monitor agent
- C. the Dependency agent
- D. the Telegraf agent
- E. the Azure Diagnostics extension

Answer: E

Explanation:

Reference:

<https://docs.microsoft.com/en-us/azure/azure-monitor/agents/diagnostics-extension-overview>

NEW QUESTION 2

- (Exam Topic 3)

You have two file servers named Server1 and Server2 that run Windows Server. Server1 contains a shared folder named Data. Data contains 10 TB of data.

You plan to decommission Server1.

You need to migrate the files from Data to a new shared folder on Server2. The solution must meet the following requirements:

- Ensure that share, file, and folder permissions are copied.
- After the initial copy occurs, ensure that changes in \\Server1\Data can be synced to the destination without initiating a full copy.
- Minimize administrative effort.

What should you use?

- A. xcopy
- B. Storage Replica
- C. Storage Migration Service
- D. azcopy

Answer: C

Explanation:

Reference:

<https://docs.microsoft.com/en-us/windows-server/storage/storage-migration-service/overview#why-use-storage>

NEW QUESTION 3

- (Exam Topic 3)

Your network contains an Active Directory Domain Services (AD DS) domain. The domain contains 20 Active Directory sites. All user management is performed from a central site.

You add users to a group.

You discover that group changes do NOT appear on a domain controller in a remote site. You need to identify whether the group changes appear on other domain controllers. What should you use?

- A. Microsoft Support and Recovery Assistant
- B. File Replication Service (FRS) Status Viewer
- C. Active Directory Replication Status Tool
- D. Active Directory Sites and Services

Answer: D

NEW QUESTION 4

- (Exam Topic 3)

Your network contains an Active Directory Domain Services (AD DS) domain. The domain contains three servers named Server1, Server2, and Server3 that run Windows Server. All the servers are on the same network and have network connectivity.

On Server1, Windows Defender Firewall has a connection security rule that has the following settings:

- Rule Type: Server-to-server
- Endpoint 1: Any IP address
- Endpoint 2: Any IP address
- Requirements: Require authentication for inbound connections and request authentication for outbound connections
- Authentication Method: Computer (Kerberos V5)
- Profile: Domain, Private, Public
- Name: Rule1

For each of the following statements, select Yes if the statement is true. Otherwise, select No. NOTE: Each correct selection is worth one point.

Answer Area

Statements	Yes	No
When Server1 establishes a network connection with Server2, the connection is encrypted.	<input type="radio"/>	<input type="radio"/>
Server2 can establish a network connection with Server3.	<input type="radio"/>	<input type="radio"/>
When Server3 establishes a network connection with Server1, the connection is encrypted.	<input type="radio"/>	<input type="radio"/>

- A. Mastered
- B. Not Mastered

Answer: A

Explanation:

Answer Area

Statements	Yes	No
When Server1 establishes a network connection with Server2, the connection is encrypted.	<input type="radio"/>	<input checked="" type="radio"/>
Server2 can establish a network connection with Server3.	<input checked="" type="radio"/>	<input type="radio"/>
When Server3 establishes a network connection with Server1, the connection is encrypted.	<input type="radio"/>	<input checked="" type="radio"/>

NEW QUESTION 5

- (Exam Topic 3)

You have a server that runs Windows Server. The server is configured to encrypt all incoming traffic by using a connection security rule. You need to ensure that Server1 can respond to the unencrypted tracert commands initiated from computers on the same network. What should you do from Windows Defender Firewall with Advanced Security?

- A. From the IPsec Settings, configure IPsec defaults.
- B. Create a new custom outbound rule that allows ICMPv4 protocol connections for all profiles.
- C. Change the Firewall state of the Private profile to Off.
- D. From the IPsec Settings, configure IPsec exemptions.

Answer: D

NEW QUESTION 6

- (Exam Topic 3)

You have three Azure virtual machines named VM1, VM2, and VM3 that host a multitier application. You plan to implement Azure Site Recovery. You need to ensure that VM1, VM2, and VM3 fail over as a group. What should you configure?

- A. an availability zone
- B. a recovery plan
- C. an availability set

Answer: B

Explanation:

Reference:

<https://docs.microsoft.com/en-us/azure/site-recovery/site-recovery-overview>

NEW QUESTION 7

- (Exam Topic 3)

You have two physical servers named AppSrv1 and AppSrv2 and an unconfigured server named Server1. All the servers run Windows Server. Only Server1 can access the internet.

You plan to use Azure Site Recovery to replicate AppSrv1 and AppSrv2 to Azure. You need to deploy the required components to AppSrv1, AppSrv2, and Server1.

Which components should you deploy? To answer, drag the appropriate components to the correct servers. Each component may be used once, more than once, or not at all. You may need to drag the split bar between panes or scroll to view content.

NOTE: Each correct selection is worth one point.

Components	Answer Area
The Azure Connected Machine agent	
An Azure Site Recovery configuration server	To AppSrv1 and AppSrv2: <input type="text"/>
The Azure Site Recovery Mobility Service	To Server1: <input type="text"/>
The Microsoft Azure Recovery Services (MARS) agent	

- A. Mastered
- B. Not Mastered

Answer: A

Explanation:
Graphical user interface, text, application Description automatically generated
Reference:
<https://docs.microsoft.com/en-us/azure/site-recovery/physical-azure-architecture> <https://docs.microsoft.com/en-us/azure/site-recovery/physical-azure-set-up-source>

NEW QUESTION 8

- (Exam Topic 3)
You have a server named Server1 that runs Windows Server.
On Server1, you create a Data Collector Set named CollectorSet1 based on the Basic template. You need to configure CollectorSet1 to meet the following requirements:

- > Older performance counter logs must be overwritten by new ones.
- > Performance counter logging must stop if there is less than 500 MB of free disk space.

What should you configure for each requirement? To answer, select the appropriate options in the answer area.
NOTE: Each correct selection is worth one point.

Older performance counter logs must be overwritten by new ones:	<div><div></div><div>The Configuration properties</div><div>The Data Manager properties</div><div>The Performance Counter properties</div></div>
Performance counter logging must stop if there is less than 500 MB of free disk space:	<div><div></div><div>The Configuration properties</div><div>The Data Manager properties</div><div>The Performance Counter properties</div></div>

- A. Mastered
- B. Not Mastered

Answer: A

Explanation:
Table Description automatically generated with medium confidence

NEW QUESTION 9

- (Exam Topic 3)
Your company uses Storage Spaces Direct.
You need to view the available storage in a Storage Space Direct storage pool. What should you use?

- A. System Configuration
- B. File Server Resource Manager (FSRM)
- C. the Get-ScorageFileServer cmdlet
- D. Failover Cluster Manager

Answer: D

Explanation:
If Failover Cluster Manager, select the Storage Space Direct storage pool. The information displayed in the main window includes the free space and used space.

NEW QUESTION 10

- (Exam Topic 3)

You have an on-premises server named Server1 that runs Windows Server and has the Hyper-V server role installed.

You have an Azure subscription.

You plan to back up Server1 to Azure by using Azure Backup.

Which two Azure Backup options require you to deploy Microsoft Azure Backup Server (MABS)? Each correct answer presents a complete solution.

NOTE: Each correct selection is worth one point.

- A. Bare Metal Recovery
- B. Files and folders
- C. System State
- D. Hyper-V Virtual Machines

Answer: AC

Explanation:

Reference:

<https://docs.microsoft.com/en-us/azure/backup/backup-mabs-system-state-and-bmr>

NEW QUESTION 10

- (Exam Topic 3)

You have an Azure Active Directory Domain Services (Azure AD DS) domain named aadds.contoso.com. You have an Azure virtual network named Vnet1. Vnet1 contains two virtual machines named VM1 and VM2 that run Windows Server. VM1 and VM2 are joined to aadds.contoso.com.

You create a new Azure virtual network named Vnet2. You add a new server named VM3 to Vnet2. When you attempt to join VM3 to aadds.contoso.com, you get an error message that the domain cannot be found.

You need to ensure that you can join VM3 to aadds.contoso.com.

Answer Area

Network configuration:

- Add a subnet to Vnet1.
- Add a subnet to Vnet2.
- Add a private endpoint to Vnet2.
- Configure virtual network peering between Vnet1 and Vnet2.

DNS configuration:

- Add a custom DNS server to Vnet1.
- Add a custom DNS server to Vnet2.
- Create an Azure private DNS zone named aadds.contoso.com.
- Add a virtual network link to an existing Azure private DNS zone.

- A. Mastered
- B. Not Mastered

Answer: A

Explanation:

Answer Area

Network configuration:

- Add a subnet to Vnet1.
- Add a subnet to Vnet2.
- Add a private endpoint to Vnet2.
- Configure virtual network peering between Vnet1 and Vnet2.

DNS configuration:

- Add a custom DNS server to Vnet1.
- Add a custom DNS server to Vnet2.
- Create an Azure private DNS zone named aadds.contoso.com.
- Add a virtual network link to an existing Azure private DNS zone.

NEW QUESTION 13

- (Exam Topic 3)

You have an Azure virtual machine named VM1. Crash dumps for a process named Process1 are enabled for VM1.

When process1.exe on VM1 crashes, a technician must access the memory dump files on the virtual machine. The technician must be prevented from accessing the virtual machine.

To what should you provide the technician access?

- A. an Azure file share
- B. an Azure Log Analytics workspace
- C. an Azure Blob Storage container
- D. a managed disk

Answer:

C

Explanation:

Reference:

<https://docs.microsoft.com/en-us/azure/azure-monitor/agents/diagnostics-extension-overview>

NEW QUESTION 16

- (Exam Topic 3)

You have a failover cluster named Cluster1 that contains three Windows Server nodes named Node 1, Node2. and Node3.

You need to deploy a Storage Spaces Direct virtual disk to Cluster1. You add the following disks to each node:

- Three 512-GB NVMe disks
- Three 3-TB diskS
- Three 1-TB SSD disks

On Cluster1. you enable Storage Spaces Direct and add the new disks.

What is the total amount of disk space available for the Storage Spaces Direct virtual disk, and which operations are cached for the SSD and HDD disks? To answer, select the appropriate options in the answer area.

Disk space available for the Storage Spaces Direct virtual disk:

Cache behavior of the SSD disks:

Cache behavior of the HDD disks:

- A. Mastered
- B. Not Mastered

Answer: A

Explanation:

Disk space available for the Storage Spaces Direct virtual disk:

Cache behavior of the SSD disks:

Cache behavior of the HDD disks:

NEW QUESTION 19

- (Exam Topic 3)

Your company uses Storage Spaces Direct.

You need to view the available storage in a Storage Space Direct storage pool. What should you use?

- A. File Server Resource Manager (FSRM)
- B. the Get-StorageSubsystem cmdlet
- C. Disk Management

D. Windows Admin Center

Answer: D

NEW QUESTION 23

- (Exam Topic 3)

You have an Azure subscription. The subscription contains a virtual machine named VM1 that runs Windows Server. The subscription contains the storage accounts shown in the following table.

Name	Performance	Premium account type	Redundancy
storage1	Standard	Not applicable	Geo-redundant storage (GRS)
storage2	Standard	Not applicable	Zone-redundant storage (ZRS)
storage3	Premium	Block blobs	Locally-redundant storage (LRS)
storage4	Premium	File shares	Locally-redundant storage (LRS)

You plan to enable boot diagnostics for VM1.
You need to configure storage for the boot diagnostics logs and snapshots. Which storage account should you use?

- A. storage1
- B. storage2
- C. storage3

Answer: C

NEW QUESTION 27

- (Exam Topic 3)

Your network contains an Active Directory Domain Services (AD DS) domain. The domain contains servers that run Windows Server as shown in the following table.

Name	IP address
Server1	172.16.10.10
Server2	172.16.20.50
Server3	172.16.30.80

Server1 has the connection security rules shown in the following table.

Answer Area

Statements	Yes	No
Server1 can communicate with Server2 successfully.	<input type="radio"/>	<input type="radio"/>
Server2 can communicate with Server3 successfully.	<input type="radio"/>	<input type="radio"/>
Server3 can communicate with Server2 successfully.	<input type="radio"/>	<input type="radio"/>

- A. Mastered
- B. Not Mastered

Answer: A

Explanation:

Answer Area

Statements	Yes	No
Server1 can communicate with Server2 successfully.	<input checked="" type="radio"/>	<input type="radio"/>
Server2 can communicate with Server3 successfully.	<input type="radio"/>	<input checked="" type="radio"/>
Server3 can communicate with Server2 successfully.	<input checked="" type="radio"/>	<input type="radio"/>

NEW QUESTION 32

- (Exam Topic 3)

You have a Hyper-V failover cluster named Cluster1 at a main datacenter. Cluster1 contains two nodes that have the Hyper-V server role installed. Cluster1 hosts 10 highly available virtual machines.

You have a cluster named Cluster2 in a disaster recovery site. Cluster2 contains two nodes that have the Hyper-V server role installed.

You plan to use Hyper-V Replica to replicate the virtual machines from Cluster1 to Cluster2. What should you do? To answer, select the appropriate options in the answer area.

NOTE: Each correct selection is worth one point.

Answer Area

Cluster role to create on Cluster2:

Distributed Transaction Coordinator (DTC)
Generic Script
Hyper-V Replica Broker
Virtual machine

Replication target name to specify:

Cluster2
The name of a node on Cluster2
The name of each virtual machine
The name of the Hyper-V Replica Broker

- A. Mastered
- B. Not Mastered

Answer: A

Explanation:

Graphical user interface, text, application Description automatically generated

Reference:

<https://docs.microsoft.com/en-us/virtualization/community/team-blog/2012/20120327-why-is-the-hyper-v-replic>

NEW QUESTION 34

- (Exam Topic 3)

You have a Hyper-V failover cluster named Cluster1 that uses a cloud witness. Cluster1 hosts a virtual machine named VM1 that runs Windows Server.

You need to fail over VM1 automatically to a different node when a service named Service1 on VM1 fails. What should you do on Cluster1 and VM1? To answer, select the appropriate options in the answer area. NOTE: Each correct selection is worth one point.

Cluster1:

Modify the settings of the VM1 cluster role.
Configure monitoring of the VM1 cluster role.
Change the startup priority of the VM1 cluster role.

VM1:

Configure the Startup Type of Service1.
Configure the Recovery settings of Service1.
Configure the Startup and Recovery settings.
Install and configure the Azure Monitor agent.

- A. Mastered
- B. Not Mastered

Answer: A

Explanation:

Text, table Description automatically generated

NEW QUESTION 35

- (Exam Topic 3)

Your network contains an Active Directory Domain Services (AD DS) domain. The domain contains a failover cluster named Cluster1.

You need to configure Cluster-Aware Updating (CAU) on the cluster by using Windows Admin Center (WAC).

Which three actions should you perform in sequence? To answer, move the appropriate actions from the list of actions to the answer area and arrange them in the correct order.

Actions

Enable CredSSP.

Add Cluster1 to WAC.

Add the Cluster-Aware Updating role.

Add a group managed service account (gMSA).

Add a WAC gateway.

>

<

Answer Area

>

<

- A. Mastered
- B. Not Mastered

Answer: A

Explanation:

Actions

Enable CredSSP.

Add Cluster1 to WAC.

Add the Cluster-Aware Updating role.

Add a group managed service account (gMSA).

Add a WAC gateway.

>

<

Answer Area

Add a group managed service account (gMSA).

Add Cluster1 to WAC.

Enable CredSSP.

>

<

NEW QUESTION 39

- (Exam Topic 3)

Note: This question is part of a series of questions that present the same scenario. Each question in the series contains a unique solution that might meet the stated goals. Some question sets might have more than one correct solution, while others might not have a correct solution.

After you answer a question in this section, you will NOT be able to return to it. As a result, these questions will not appear in the review screen.

Your network contains a single-domain Active Directory Domain Services (AD DS) forest named contoso.com. The functional level of the forest is Windows Server 2012 R2. All domain controllers run Windows Server 2012 R2.

Sysvol replicates by using the File Replication Service (FRS).

You plan to replace the existing domain controllers with new domain controllers that will run Windows Server 2022.

You need to ensure that you can add the first domain controller that runs Windows Server 2022. Solution: You migrate sysvol from FRS to Distributed File System (DFS) Replication.

Does this meet the goal?

- A. Yes
- B. No

Answer: A

Explanation:

Reference:

https://www.rebeladmin.com/2021/09/step-by-step-guide-active-directory-migration-from-windows-server-2008

NEW QUESTION 41

- (Exam Topic 3)

You need to create a Hyper-V hyper-converged cluster that stores virtual machines by using Storage Spaces Owed

Which three actions should you perform in sequence? To answer, move the appropriate anions from the list of actions to the answer area and arrange them in the correct order.

Actions

Enable Storage Spaces Direct.

Add a Scale-Out File Server for application role.

Create a Distributed File System (DFS) namespace.

Create a failover cluster.

Create a file share.

Create a volume.

>

<

Answer Area

>

<

- A. Mastered
- B. Not Mastered

Answer: A

Explanation:

Actions

Enable Storage Spaces Direct.

Add a Scale-Out File Server for application role.

Create a Distributed File System (DFS) namespace.

Create a failover cluster.

Create a file share.

Create a volume.

>

<

Answer Area

Create a failover cluster.

Enable Storage Spaces Direct.

Create a volume.

⬆

⬇

NEW QUESTION 42

- (Exam Topic 3)

You have a failover cluster named Cluster1 that contains the nodes shown in the following table.

Name	Server role
Node1	File Server
Node2	File Server
Node3	File Server

A File Server for general use cluster role named HAFS is configured as shown in the General exhibit (Click the General tab.)

Answer Area

If you select **Move**, and then **Best Possible Node**, HAFS will move to Node3.

☐

☐

If you stop and start Cluster1, HAFS will come online on Node1.

☐

☐

If you select **Move, Select Node**, and then **Node2**, HAFS will move to Node2.

☐

☐

- A. Mastered
- B. Not Mastered

Answer: A

Explanation:

Answer Area

If you select **Move**, and then **Best Possible Node**, HAFS will move to Node3.

☒

☐

If you stop and start Cluster1, HAFS will come online on Node1.

☐

☒

If you select **Move, Select Node**, and then **Node2**, HAFS will move to Node2.

☒

☐

NEW QUESTION 44

- (Exam Topic 3)

You have an on-premises Active Directory Domain Services (AD DS) domain that syncs with an Azure Active Directory (Azure AD) tenant. The AD DS domain contains a domain controller named DC1. DC1 does NOT have internet access. You need to configure password security for on-premises users. The solution must meet the following requirements:

- > Prevent the users from using known weak passwords.
- > Prevent the users from using the company name in passwords.

What should you do? To answer, drag the appropriate configurations to the correct targets. Each configuration may be used once, more than once, or not at all. You may need to drag the split bar between panes or scroll to view content. NOTE: Each correct selection is worth one point.

Configurations

Configure Azure AD Identity Protection.

Configure Azure AD Password Protection.

Install the Azure AD Pass-through Authentication Agent.

Install the Azure AD Password Protection DC agent.

Install the Azure AD Password Protection proxy service.

Answer Area

On DC1:

Configuration

On a member server:

Configuration

In Azure:

Configuration

- A. Mastered
- B. Not Mastered

Answer: A

Explanation:

Reference:
<https://docs.microsoft.com/en-us/azure/active-directory/authentication/howto-password-ban-bad-on-premises-de>

NEW QUESTION 46

- (Exam Topic 3)
Note: This question is part of a series of questions that present the same scenario. Each question in the series contains a unique solution that might meet the stated goals. Some question sets might have more than one correct solution, while others might not have a correct solution.
After you answer a question in this section, you will NOT be able to return to it. As a result, these questions will not appear in the review screen.
You have a failover cluster named Cluster1 that hosts an application named App1.
The General tab in App1 Properties is shown in the General exhibit. (Click the General tab.)

App1 Properties

General

Failover

App1

Name:

App1

Preferred Owners

Select the preferred owners for this clustered role. Use the buttons to list them in order from most preferred at the top to least preferred at the bottom.

☐ Server1

☐ Server2

Down

Priority: Medium

Status: Running

Node: Server2

OK

Cancel

Apply

The Failover tab in App1 Properties is shown in the Failover exhibit. (Click the Failover tab.)

App1 Properties

General Failover

Failover

Specify the number of times the Cluster service will attempt to restart or fail over the clustered role in the specified period.

If the clustered role fails more than the maximum in the specified period, it will be left in the failed state.

Maximum failures in the specified period: 3

Period (hours): 6

Fallback

Specify whether the clustered role will automatically fail back to the most preferred owner (which is set on the General tab).

☐ Prevent fallback

☒ Allow fallback

☒ Immediately

☐ Fallback between 0 and 0 hours

OK Cancel Apply

Server1 shuts down unexpectedly.

You need to ensure that when you start Server1, App1 continues to run on Server2. Solution: You increase Maximum failures in the specified period for the App1 cluster role. Does this meet the goal?

- A. Yes
- B. No

Answer: B

Explanation:

The Maximum failures setting is used to determine when the cluster determines that a node is offline. It does not affect whether a cluster will fail back when a node comes online.

NEW QUESTION 50

- (Exam Topic 3)

You have an Azure subscription that has Microsoft Defender for Cloud enabled. You have 50 Azure virtual machines that run Windows Server.

You need to ensure that any security exploits detected on the virtual machines are forwarded to Defender for Cloud.

Which extension should you enable on the virtual machines?

- A. Vulnerability assessment for machines
- B. Microsoft Dependency agent
- C. Log Analytics agent for Azure VMs
- D. Guest Configuration agent

Answer: A

Explanation:

Reference:

<https://docs.microsoft.com/en-us/azure/defender-for-cloud/deploy-vulnerability-assessment-vm>

NEW QUESTION 54

- (Exam Topic 3)

Note: This question is part of a series of questions that present the same scenario. Each question in the series contains a unique solution that might meet the stated goals. Some question sets might have more than one correct solution, while others might not have a correct solution.

After you answer a question in this section, you will NOT be able to return to it. As a result, these questions will not appear in the review screen.

Your network contains a single-domain Active Directory Domain Services (AD DS) forest named contoso.com. The functional level of the forest is Windows Server 2012 R2. All domain controllers run Windows Server 2012 R2.

Sysvol replicates by using the File Replication Service (FRS).

You plan to replace the existing domain controllers with new domain controllers that will run Windows Server 2022.

You need to ensure that you can add the first domain controller that runs Windows Server 2022. Solution: You run the Active Directory Migration Tool (ADMT).

Does this meet the goal?

- A. Yes
- B. No

Answer: B

NEW QUESTION 59

- (Exam Topic 3)

Note: This question is part of a series of questions that present the same scenario. Each question in the series contains a unique solution that might meet the stated goals. Some question sets might have more than one correct solution, while others might not have a correct solution.

After you answer a question in this section, you will NOT be able to return to it. As a result, these questions will not appear in the review screen.

You have a server named Server1 that runs Windows Server.

You need to ensure that only specific applications can modify the data in protected folders on Server1. Solution: From Virus & threat protection, you configure Controlled folder access.

Does this meet the goal?

- A. Yes
- B. No

Answer: A

Explanation:

Reference:

<https://docs.microsoft.com/en-us/microsoft-365/security/defender-endpoint/customize-controlled-folders?view=>

NEW QUESTION 60

- (Exam Topic 3)

Note: This question is part of a series of questions that present the same scenario. Each question in the series contains a unique solution that might meet the stated goals. Some question sets might have more than one correct solution, while others might not have a correct solution.

After you answer a question in this section, you will NOT be able to return to it. As a result, these questions will not appear in the review screen.

You have a server named Server1 that runs Windows Server.

You need to ensure that only specific applications can modify the data in protected folders on Server1. Solution: From App & browser control, you configure the Exploit protection settings.

Does this meet the goal?

- A. Yes
- B. No

Answer: B

Explanation:

Reference:

<https://docs.microsoft.com/en-us/microsoft-365/security/defender-endpoint/customize-controlled-folders?view=>

NEW QUESTION 61

- (Exam Topic 3)

Note: This question is part of a series of questions that present the same scenario. Each question in the series contains a unique solution that might meet the stated goals. Some question sets might have more than one correct solution, while others might not have a correct solution.

After you answer a question in this section, you will NOT be able to return to it. As a result, these questions will not appear in the review screen.

You have a failover cluster named Cluster1 that hosts an application named App1.

The General tab in App1 Properties is shown in the General exhibit. (Click the General tab.)

The screenshot shows the 'App1 Properties' dialog box with the 'General' tab selected. The 'Name' field contains 'App1'. Under 'Preferred Owners', there is a list box containing 'Server1' and 'Server2'. The 'Priority' is set to 'Medium'. The 'Status' is 'Running' and the 'Node' is 'Server2'. At the bottom, there are 'OK', 'Cancel', and 'Apply' buttons.

The Failover tab in App1 Properties is shown in the Failover exhibit. (Click the Failover tab.)

Server1 shuts down unexpectedly.

You need to ensure that when you start Server1, App1 continues to run on Server2. Solution: From the General settings, you move Server2 up. Does this meet the goal?

- A. Yes
- B. No

Answer: B

Explanation:

Server1 and Server2 are both unticked so the order they are listed in has no effect on whether the cluster will fail back.

NEW QUESTION 64

- (Exam Topic 3)

You manage 200 physical servers that run Windows Server. You plan to migrate the servers to Azure.

You need to prepare for discovery of the servers by using Azure Migrate.

Which three actions should you perform in sequence on a physical server? To answer, move the appropriate actions from the list of actions to the answer area and arrange them in the correct order.

Actions	Answer Area
Download and extract the Azure Migrate installer script ZIP file.	
Download and extract the Azure Migrate Appliance VHD file.	
Run AzureMigrateInstaller.ps1.	
Import a virtual machine.	
Configure the appliance and register the appliance with Azure Migrate.	

- A. Mastered
- B. Not Mastered

Answer: A

Explanation:

Graphical user interface, text, application, email Description automatically generated

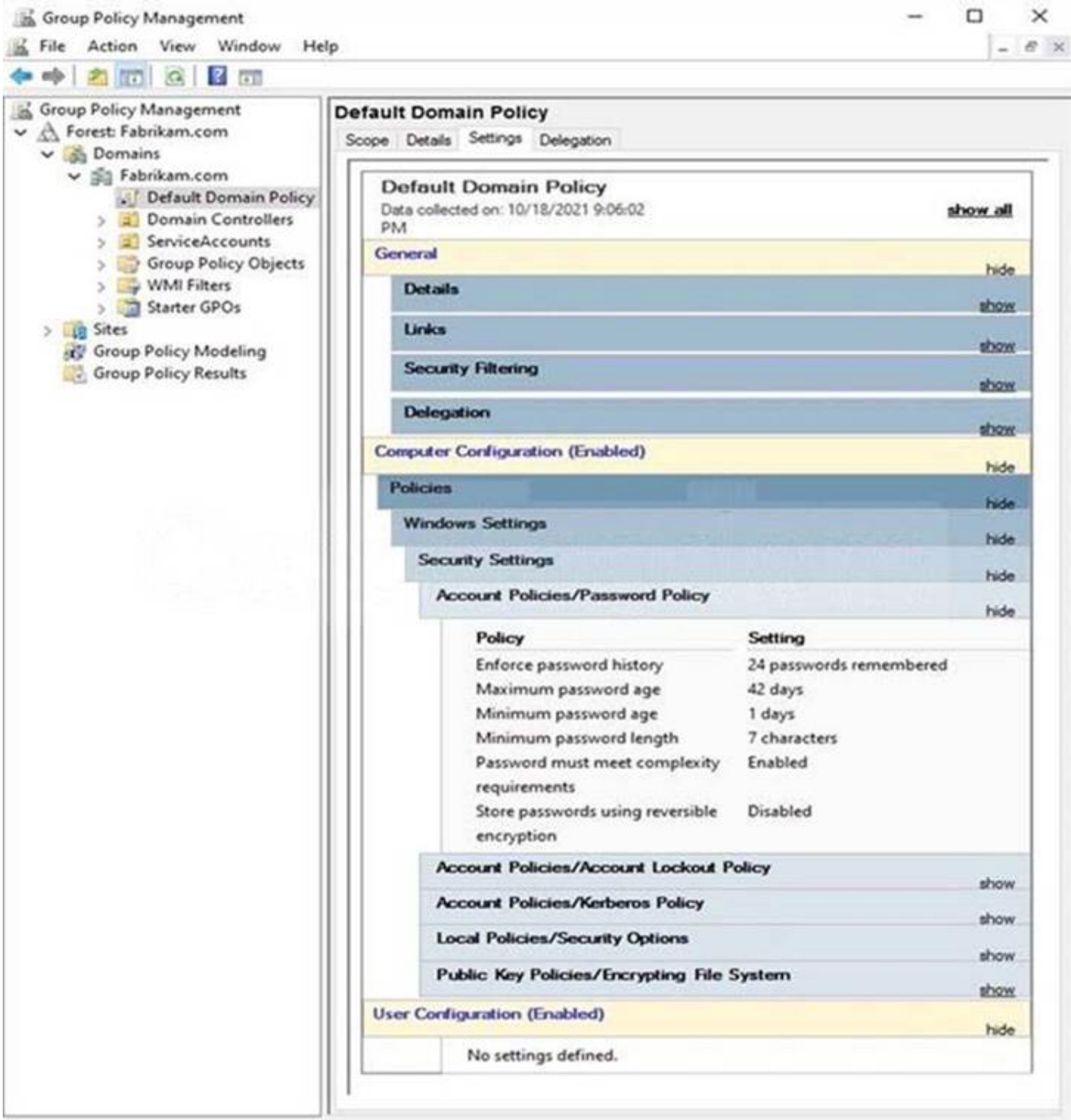
Reference:

<https://docs.microsoft.com/en-us/azure/migrate/tutorial-discover-physical>

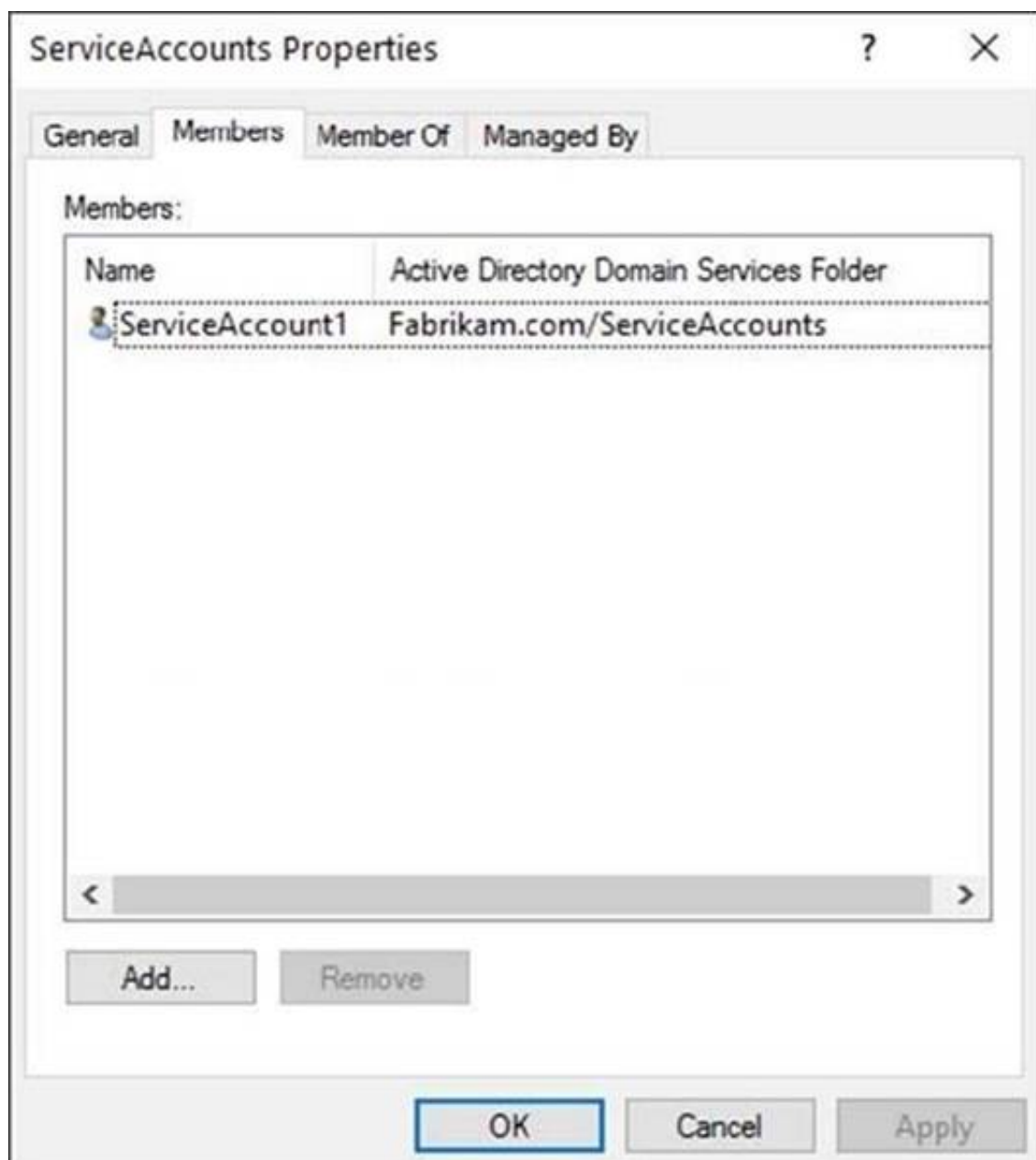
NEW QUESTION 69

- (Exam Topic 3)

The Default Domain Policy Group Policy Object (GPO) is shown in the GPO exhibit. (Click the GPO tab.)



The members of a group named Service Accounts are shown in the Group exhibit. (Click the Group tab.)



An organizational unit (OU) named ServiceAccounts is shown in the OU exhibit. (Click the OU tab.)



You create a Password Settings Object (PSO) as shown in the PSO exhibit. (Click the PSO tab.)

Service Accounts Policy

Password Settings

Name: Service Accounts Policy

Precedence: 10

☒ Enforce minimum password length

Minimum password length (character... 16

☒ Enforce password history

Number of passwords remembered: 12

☒ Password must meet complexity requirements

☐ Store password using reversible encryption

☒ Protect from accidental deletion

Description:

Password age options:

☒ Enforce minimum password age

User cannot change the password... 1

☒ Enforce maximum password age

User must change the password af... 30

☒ Enforce account lockout policy:

Number of failed logon attempts allo... 5

Reset failed logon attempts count aft... 30

Account will be locked out

☒ For a duration of (mins): 60

☐ Until an administrator manually unlocks the a...

Directly Applies To

Name	Mail
ServiceAccounts	

Add...

Remove

Extensions

More Information

OK Cancel

For each of the following statements, select Yes if the statement is true. Otherwise, select No. NOTE: Each correct selection is worth one point.

Statements	Yes	No
The password of ServiceAccount1 must be at least 16 characters long.	<input type="radio"/>	<input type="radio"/>
The password of ServiceAccount2 must be at least 16 characters long.	<input type="radio"/>	<input type="radio"/>
Accounts that have the Service Accounts Policy applied can change their password to P@\$w0rd1.	<input type="radio"/>	<input type="radio"/>

- A. Mastered
 B. Not Mastered

Answer: A

Explanation:

A screenshot of a computer Description automatically generated with medium confidence

Reference:

<https://docs.microsoft.com/en-us/windows-server/identity/ad-ds/get-started/adac/introduction-to-active-directory>

NEW QUESTION 74

- (Exam Topic 2)

You need to meet the technical requirements for Cluster2.

Which four actions should you perform in sequence before you can enable replication? To answer, move the appropriate actions from the list of actions to the answer area and arrange them in the correct order.

Actions	Answer Area
Create an Azure Recovery Services vault.	
Install Azure Connected Machine agents.	
Install and register Azure Site Recovery Providers.	
Create and associate replication policies.	
Create a Hyper-V site.	

- A. Mastered
 B. Not Mastered

Answer: A

Explanation:

Text Description automatically generated

Reference:

<https://docs.microsoft.com/en-us/azure/site-recovery/hyper-v-azure-tutorial>

NEW QUESTION 76

- (Exam Topic 2)

You need to meet the technical requirements for User1. To which group in contoso.com should you add User1?

- A. Domain Admins
- B. Account Operators
- C. Schema Admins
- D. Backup Operators

Answer: A

NEW QUESTION 79

- (Exam Topic 1)

You are planning the migration of APP3 and APP4 to support the Azure migration plan.

What should you do on Cluster1 and in Azure before you perform the migration? To answer, select the appropriate options in the answer area.

NOTE: Each correct selection is worth one point.

Answer Area

On Cluster1:

Configure Azure Network Adapter.
Create a Point-to-Site (P2S) VPN connection to Vnet1.
Import the Azure Migrate appliance.
Install the Azure File Sync agent.
Install the Windows Server Migration Tools.

In Azure:

Create a premium block blobs Azure Storage account.
Create a private endpoint.
Create a VPN gateway.
Create an Azure Migrate project.

- A. Mastered
- B. Not Mastered

Answer: A

Explanation:

Graphical user interface, text, application Description automatically generated

Reference:

<https://docs.microsoft.com/en-us/azure/migrate/tutorial-discover-hyper-v>

NEW QUESTION 80

- (Exam Topic 1)

You are planning the migration of Archive1 to support the on-premises migration plan.

What is the minimum number of IP addresses required for the node and cluster roles on Cluster3?

- A. 2
- B. 3
- C. 4
- D. 5

Answer: B

Explanation:

One IP for each of the two nodes in the cluster and one IP for the cluster virtual IP (VIP).

NEW QUESTION 84

- (Exam Topic 1)

You are planning the implementation of Cluster2 to support the on-premises migration plan. You need to ensure that the disks on Cluster2 meet the security requirements.

In which order should you perform the actions? To answer, move all actions from the list of actions to the answer area and arrange them in the correct order.

Actions	Answer Area
Add a disk resource to the cluster.	
Enable BitLocker on the volume.	
Update the BitLockerProtectorInfo property of the volume.	
Create a Cluster Shared Volume (CSV).	
Put the disk in maintenance mode.	

- A. Mastered
- B. Not Mastered

Answer: A

Explanation:
Graphical user interface, text, application, table Description automatically generated
Reference:
<https://docs.microsoft.com/en-us/windows-server/failover-clustering/bitlocker-on-csv-in-ws-2022>

NEW QUESTION 86

- (Exam Topic 1)
You are planning the europe.fabrikam.com migration to support the on-premises migration plan-Where should you install the Password Export Server (PES) service, where should you generate the encryption key? To answer, select the appropriate options in the answer area.
NOTE: Each correct selection is worth one point.

Answer Area

Install the PES service on:

aadc1.corp.fabrikam.com
admtcomputer.fabrikam.com
dc1.corp.fabrikam.com
dc2.europe.fabrikam.com

Generate the encryption key on:

aadc1.corp.fabrikam.com
admtcomputer.fabrikam.com
dc1.corp.fabrikam.com
dc2.europe.fabrikam.com

- A. Mastered
- B. Not Mastered

Answer: A

Explanation:
Answer Area

Install the PES service on:

aadc1.corp.fabrikam.com
admtcomputer.fabrikam.com
dc1.corp.fabrikam.com
dc2.europe.fabrikam.com

Generate the encryption key on:

aadc1.corp.fabrikam.com
admtcomputer.fabrikam.com
dc1.corp.fabrikam.com
dc2.europe.fabrikam.com

NEW QUESTION 91

- (Exam Topic 1)
You are planning the www.fabrikam.com website migration to support the Azure migration plan. How should you configure WebApp1? To answer, select the appropriate options in the answer area. NOTE: Each correct selection is worth one point.

Answer Area

To enable WebApp1 to handle requests for the website:

Add a custom domain name.
Create a deployment slot.
Create a private endpoint.

To point client connections to WebApp1:

Add HTTP redirect rules on WEB1 and WEB2.
Implement Azure Front Door.
Implement Azure Traffic Manager.
Modify a DNS record.

- A. Mastered
- B. Not Mastered

Answer: A

Explanation:

Box 1: Add a custom domain name

To migrate www.fabrikam.com website to an Azure App Service web app, you need to add Fabrikam.com as a custom domain in Azure. This will make the domain name available to use in the web app.

Box 2: Modify a DNS record

You need to change the DNS record for www.fabrikam.com to point to the Azure web app. HTTP redirect rules won't work because WEB1 and WEB2 will be decommissioned. Reference:

<https://docs.microsoft.com/en-us/azure/app-service/app-service-web-tutorial-custom-domain?tabs=a%2Cazurecl>

NEW QUESTION 93

.....

THANKS FOR TRYING THE DEMO OF OUR PRODUCT

Visit Our Site to Purchase the Full Set of Actual AZ-801 Exam Questions With Answers.

We Also Provide Practice Exam Software That Simulates Real Exam Environment And Has Many Self-Assessment Features. Order the AZ-801 Product From:

<https://www.2passeasy.com/dumps/AZ-801/>

Money Back Guarantee

AZ-801 Practice Exam Features:

- * AZ-801 Questions and Answers Updated Frequently
- * AZ-801 Practice Questions Verified by Expert Senior Certified Staff
- * AZ-801 Most Realistic Questions that Guarantee you a Pass on Your FirstTry
- * AZ-801 Practice Test Questions in Multiple Choice Formats and Updatesfor 1 Year