

# Fortinet

## Exam Questions NSE7\_SDW-7.0

Fortinet NSE 7 - SD-WAN 7.0



**NEW QUESTION 1**  
Refer to the exhibits.

Exhibit A

```
config duplication
edit 1
set srcaddr "10.0.1.0/24"
set dstaddr "10.1.0.0/24"
set srcintf "port5"
set dstintf "overlay"
set service "ALL"
set packet-duplication force
next
end

branch1_fgt # diagnose sys sdwan zone
Zone SASE index=2
members(0):
Zone overlay index=4
members(3): 19(T_INET_0_0) 20(T_INET_1_0) 21(T_MPLS_0)
Zone underlay index=3
members(2): 3(port1) 4(port2)
Zone virtual-wan-link index=1
members(0):

1.274665 port5 in 10.0.1.101 -> 10.1.0.7: icmp: echo request
1.275788 T_INET_0_0 out 10.0.1.101 -> 10.1.0.7: icmp: echo request
1.275790 T_INET_1_0 out 10.0.1.101 -> 10.1.0.7: icmp: echo request
1.275801 T_MPLS_0 out 10.0.1.101 -> 10.1.0.7: icmp: echo request
1.278365 T_INET_1_0 in 10.1.0.7 -> 10.0.1.101: icmp: echo reply
1.278553 port5 out 10.1.0.7 -> 10.0.1.101: icmp: echo reply
```

Exhibit B

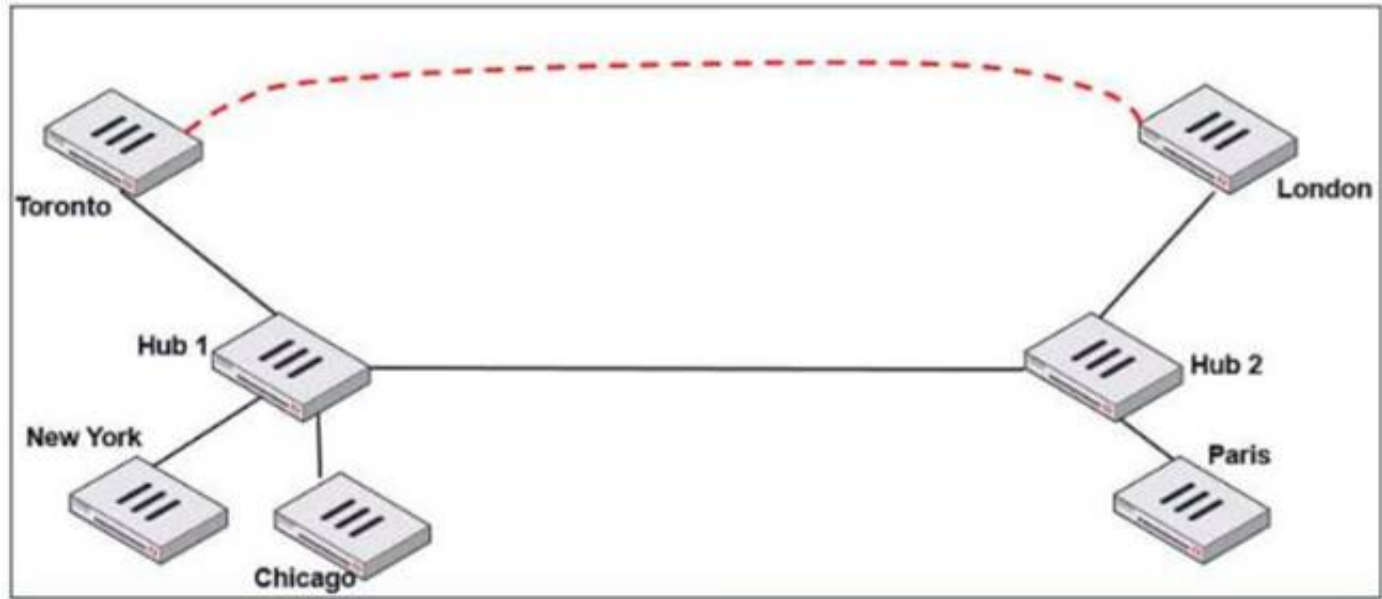
```
3.874431 T_INET_1_0 in 10.0.1.101 -> 10.1.0.7: icmp: echo request
3.874630 port5 out 10.0.1.101 -> 10.1.0.7: icmp: echo request
3.874895 T_INET_0_0 in 10.0.1.101 -> 10.1.0.7: icmp: echo request
3.875125 T_MPLS_0 in 10.0.1.101 -> 10.1.0.7: icmp: echo request
3.875054 port5 in 10.1.0.7 -> 10.0.1.101: icmp: echo reply
3.875308 T_INET_1_0 out 10.1.0.7 -> 10.0.1.101: icmp: echo reply
```

Exhibit A shows the packet duplication rule configuration, the SD-WAN zone status output, and the sniffer output on FortiGate acting as the sender. Exhibit B shows the sniffer output on a FortiGate acting as the receiver. The administrator configured packet duplication on both FortiGate devices. The sniffer output on the sender FortiGate shows that FortiGate forwards an ICMP echo request packet over three overlays, but it only receives one reply packet through T\_INET\_1\_0. Based on the output shown in the exhibits, which two reasons can cause the observed behavior? (Choose two.)

- A. On the receiver FortiGate, packet-de-duplication is enabled.
- B. The ICMP echo request packets sent over T\_INET\_0\_0 and T\_MPLS\_0 were dropped along the way.
- C. The ICMP echo request packets received over T\_INET\_0\_0 and T\_MPLS\_0 were offloaded to NPU.
- D. On the sender FortiGate, duplication-max-num is set to 3.

**Answer: AD**

**NEW QUESTION 2**  
Refer to the exhibit.



Two hub-and-spoke groups are connected through a site-to-site IPsec VPN between Hub 1 and Hub 2. Which two configuration settings are required for Toronto and London spokes to establish an ADVPN shortcut? (Choose two.)

- A. On the hubs, auto-discovery-sender must be enabled on the IPsec VPNs to spokes.
- B. On the spokes, auto-discovery-receiver must be enabled on the IPsec VPN to the hub.
- C. auto-discovery-forwarder must be enabled on all IPsec VPNs.
- D. On the hubs, net-device must be enabled on all IPsec VPNs.

**Answer:** AB

### NEW QUESTION 3

Which are two benefits of using CLI templates in FortiManager? (Choose two.)

- A. You can reference meta fields.
- B. You can configure interfaces as SD-WAN members without having to remove references first.
- C. You can configure FortiManager to sync local configuration changes made on the managed device, to the CLI template.
- D. You can configure advanced CLI settings.

**Answer:** AD

### NEW QUESTION 4

Which two statements describe how IPsec phase 1 main mode is different from aggressive mode when performing IKE negotiation? (Choose two )

- A. A peer ID is included in the first packet from the initiator, along with suggested security policies.
- B. XAuth is enabled as an additional level of authentication, which requires a username and password.
- C. A total of six packets are exchanged between an initiator and a responder instead of three packets.
- D. The use of Diffie Hellman keys is limited by the responder and needs initiator acceptance.

**Answer:** BC

### NEW QUESTION 5

Refer to the exhibit.

```
ike 0:T_INET_0_0:214: received informational request
ike 0:T_INET_0_0:214: processing notify type SHORTCUT_QUERY
ike 0:T_INET_0_0: recv shortcut-query 9065761962601467474
07409008f7fbd17e/0000000000000000 192.2.0.1 10.0.1.101->10.0.2.101 psk 64 ppk 0 ttl 32
nat 0 ver 2 mode 0
ike 0:T_INET_0: iif 20 10.0.1.101->10.0.2.101 route lookup oif 20 T_INET_0 gwy
10.201.1.1
ike 0:T_INET_0_1: forward shortcut-query 9065761962601467474
07409008f7fbd17e/0000000000000000 192.2.0.1 10.0.1.101->10.0.2.101 psk 64 ppk 0 ttl 31
ver 2 mode 0, ext-mapping 192.2.0.1:500
```

Which statement about the role of the ADVPN device in handling traffic is true?

- A. This is a spoke that has received a query from a remote hub and has forwarded the response to its hub.
- B. Two hubs, 10.0.1.101 and 10.0.2.101, are receiving and forwarding queries between each other.
- C. This is a hub that has received a query from a spoke and has forwarded it to another spoke.
- D. Two spokes, 192.2.0.1 and 10.0.2.101, forward their queries to their hubs.

**Answer:** C

### NEW QUESTION 6

What does enabling the exchange-interface-ip setting enable FortiGate devices to exchange?

- A. The gateway address of their IPsec interfaces
- B. The tunnel ID of their IPsec interfaces
- C. The IP address of their IPsec interfaces
- D. The name of their IPsec interfaces

**Answer:** C

### NEW QUESTION 7

What is a benefit of using application steering in SD-WAN?

- A. The traffic always skips the regular policy routes.
- B. You steer traffic based on the detected application.
- C. You do not need to enable SSL inspection.
- D. You do not need to configure firewall policies that accept the SD-WAN traffic.

**Answer:** B

### NEW QUESTION 8

Which two statements about SLA targets and SD-WAN rules are true? (Choose two.)

- A. When configuring an SD-WAN rule, you can select multiple SLA targets of the same performance SLA.
- B. SD-WAN rules use SLA targets to check if the preferred members meet the SLA requirements.
- C. SLA targets are used only by SD-WAN rules that are configured with Lowest Cost (SLA) or Maximize Bandwidth (SLA) as strategy.

D. Member metrics are measured only if an SLA target is configured.

**Answer:** BC

#### NEW QUESTION 9

What are two reasons for using FortiManager to organize and manage the network for a group of FortiGate devices? (Choose two )

- A. It simplifies the deployment and administration of SD-WAN on managed FortiGate devices.
- B. It improves SD-WAN performance on the managed FortiGate devices.
- C. It sends probe signals as health checks to the beacon servers on behalf of FortiGate.
- D. It acts as a policy compliance entity to review all managed FortiGate devices.
- E. It reduces WAN usage on FortiGate devices by acting as a local FortiGuard server.

**Answer:** AE

#### NEW QUESTION 10

In the default SD-WAN minimum configuration, which two statements are correct when traffic matches the default implicit SD-WAN rule? (Choose two )

- A. Traffic has matched none of the FortiGate policy routes.
- B. Matched traffic failed RPF and was caught by the rule.
- C. The FIB lookup resolved interface was the SD-WAN interface.
- D. An absolute SD-WAN rule was defined and matched traffic.

**Answer:** AC

#### NEW QUESTION 10

Refer to the exhibit.

```
branch1_fgt # diagnose sys sdwan service 3

Service(3): Address Mode(IPV4) flags=0x200 use-shortcut-sla
  Gen(2), TOS(0x0/0x0), Protocol(0: 1->65535), Mode(priority), link-cost-factor(packet-
loss), link-cost-threshold(0), health-check(VPN_PING)
  Members(3):
    1: Seq_num(3 T_INET_0_0), alive, packet loss: 2.000%, selected
    2: Seq_num(4 T_MPLS_0), alive, packet loss: 4.000%, selected
    3: Seq_num(5 T_INET_1_0), alive, packet loss: 12.000%, selected
  Src address(1):
    10.0.1.0-10.0.1.255

  Dst address(1):
    10.0.0.0-10.255.255.255

branch1_fgt (3) # show
config service
  edit 3
    set name "Corp"
    set mode priority
    set dst "Corp-net"
    set src "LAN-net"
    set health-check "VPN_PING"
    set link-cost-factor packet-loss
    set link-cost-threshold 0
    set priority-members 5 3 4
  next
end
```

The exhibit shows the SD-WAN rule status and configuration.

Based on the exhibit, which change in the measured packet loss will make T\_INET\_1\_0 the new preferred member?

- A. When all three members have the same packet loss.
- B. When T\_INET\_0\_0 has 4% packet loss.
- C. When T\_INET\_0\_0 has 12% packet loss.
- D. When T\_INET\_1\_0 has 4% packet loss.

**Answer:** A

#### NEW QUESTION 12

Which two statements are correct when traffic matches the implicit SD-WAN rule? (Choose two.)

- A. The sdwan\_service\_id flag in the session information is 0.
- B. All SD-WAN rules have the default setting enabled.
- C. Traffic does not match any of the entries in the policy route table.
- D. Traffic is load balanced using the algorithm set for the v4-ecmp-mode setting.

**Answer:** AC

#### Explanation:

sdwan\_service\_id is 0 = match SD-WAN implicit rule, study guide 7.0 page 120, 7.2 page 149 SD-WAN rules internally are interpreted as a Policy route, so when

the traffic doesn't match with any policy route, it will be flowing by implicit policy.

**NEW QUESTION 17**

What are two common use cases for remote internet access (RIA)? (Choose two.)

- A. Provide direct internet access on spokes
- B. Provide internet access through the hub
- C. Centralize security inspection on the hub
- D. Provide thorough inspection on spokes

**Answer:** BC

**NEW QUESTION 18**

What are two reasons why FortiGate would be unable to complete the zero-touch provisioning process? (Choose two.)

- A. The FortiGate cloud key has not been added to the FortiGate cloud portal.
- B. FortiDeploy has connected with FortiGate and provided the initial configuration to contact FortiManager
- C. The zero-touch provisioning process has completed internally, behind FortiGate.
- D. FortiGate has obtained a configuration from the platform template in FortiGate cloud.
- E. A factory reset performed on FortiGate.

**Answer:** AC

**NEW QUESTION 19**

Refer to the exhibits.  
Exhibit A

[-] Network Properties	
[-] Service	Critical-DIA
[-] Identity	
[-] Device ID	FGVM01TM22000077
[-] Device Name	branch1_fgt
[-] Type	
[-] Sub Type	sdwan
[-] Type	event
[-] Alerts	
[-] Level	notice
[-] General	
[-] Log Description	SDWAN status
[-] Log ID	0113022923
[-] Message	Service prioritized by performance metric will be redirected in sequence order.
[-] Sequence Number	2,1
[-] Virtual Domain	root
[-] Others	
[-] Date/Time	23:57:29
[-] Destination End User ID	3
[-] Destination Endpoint ID	3
[-] Device Time	2022-03-04 14:57:27
[-] Event Time	1646434647595788893
[-] Event Type	Service
[-] Metric	latency
[-] Service ID	1
[-] Time Stamp	2022-03-04 23:57:29
[-] Time Zone	-0800
[-] UEBA Endpoint ID	3
[-] UEBA User ID	3
[-] logver	700030237

Exhibit B

```
branch1_fgt # diagnose sys sdwan member
Member(1): interface: port1, flags=0x0 , gateway: 192.2.0.2, priority: 0 1024, weight: 0
Member(2): interface: port2, flags=0x0 , gateway: 192.2.0.10, priority: 0 1024, weight: 0

config service
  edit 1
    set name "Critical-DIA"
    set mode priority
    set src "LAN-net"
    set internet-service enable
    set internet-service-app-ctrl 16354 41468 16920
    set health-check "Level3_DNS"
    set priority-members 1 2
  next
end
```

Exhibit A shows an SD-WAN event log and exhibit B shows the member status and the SD-WAN rule configuration. Based on the exhibits, which two statements are correct? (Choose two.)

- A. FortiGate updated the outgoing interface list on the rule so it prefers port2.
- B. Port2 has the highest member priority.
- C. Port2 has a lower latency than port1.
- D. SD-WAN rule ID 1 is set to lowest cost (SLA) mode.

**Answer:** AC

### NEW QUESTION 23

Refer to the exhibit.

```
branch1_fgt # diagnose sys sdwan service 3

Service(3): Address Mode(IPV4) flags=0x200 use-shortcut-sla
  Gen(5), TOS(0x0/0x0), Protocol(0: 1->65535), Mode(priority), link-cost-
  factor(latency), link-cost-threshold(10), heath-check(VPN_PING)
  Members(3):
    1: Seq_num(3 T_INET_0_0), alive, latency: 101.349, selected
    2: Seq_num(4 T_INET_1_0), alive, latency: 151.278, selected
    3: Seq_num(5 T_MPLS_0), alive, latency: 200.984, selected
  Src address(1):
    10.0.1.0-10.0.1.255

  Dst address(1):
    10.0.0.0-10.255.255.255

branch1_fgt (3) # show
config service
  edit 3
    set name "Corp"
    set mode priority
    set dst "Corp-net"
    set src "LAN-net"
    set health-check "VPN_PING"
    set priority-members 3 4 5
  next
end
```

The exhibit shows the SD-WAN rule status and configuration.

Based on the exhibit, which change in the measured latency will make T\_MPLS\_0 the new preferred member?

- A. When T\_INET\_0\_0 and T\_MPLS\_0 have the same latency.
- B. When T\_MPLS\_0 has a latency of 100 ms.
- C. When T\_INET\_0\_0 has a latency of 250 ms.
- D. When T\_N1PLS\_0 has a latency of 80 ms.

**Answer:** D

### NEW QUESTION 24

Refer to the exhibit.

```
config system sdwan
  set status enable
  set load-balance source-dest-ip-based
  config zone
    edit "virtual-wan-link"
    next
    edit "SASE"
    next
    edit "underlay"
    next
  end
  config members
    edit 1
      set interface "port1"
      set zone "underlay"
      set gateway 192.2.0.2
    next
    edit 2
      set interface "port2"
      set zone "underlay"
      set gateway 192.2.0.10
    next
  end
  ...
end
```

Which algorithm does SD-WAN use to distribute traffic that does not match any of the SD-WAN rules?

- A. All traffic from a source IP to a destination IP is sent to the same interface.
- B. All traffic from a source IP is sent to the same interface.
- C. All traffic from a source IP is sent to the most used interface.
- D. All traffic from a source IP to a destination IP is sent to the least used interface.

**Answer:** A

#### NEW QUESTION 27

Refer to the exhibit.

```
config system sdwan
  set fail-detect enable
  set fail-alert-interfaces "port5"
  config health-check
    edit "Level3_DNS"
      set update-cascade-interface enable
      set members 1 2
    next
    edit "HQ"
      set update-cascade-interface enable
      set members 3
    next
  end
end
```

Based on the exhibit, which action does FortiGate take?

- A. FortiGate bounces port5 after it detects all SD-WAN members as dead.
- B. FortiGate fails over to the secondary device after it detects all SD-WAN members as dead.
- C. FortiGate brings up port5 after it detects all SD-WAN members as alive.
- D. FortiGate brings down port5 after it detects all SD-WAN members as dead.

**Answer:** B

#### NEW QUESTION 30

Which two conclusions for traffic that matches the traffic shaper are true? (Choose two.)

```
# diagnose firewall shaper traffic-shaper list name VoIP_Shaper
name VoIP_Shaper
maximum-bandwidth 6250 KB/sec
guaranteed-bandwidth 2500 KB/sec
current-bandwidth 93 KB/sec
priority 2
overhead 0
tos ff
packets dropped 0
bytes dropped 0
```

- A. The traffic shaper drops packets if the bandwidth is less than 2500 KBps.
- B. The measured bandwidth is less than 100 KBps.
- C. The traffic shaper drops packets if the bandwidth exceeds 6250 KBps.
- D. The traffic shaper limits the bandwidth of each source IP to a maximum of 6250 KBps.

**Answer:** BC

#### NEW QUESTION 33

Which CLI command do you use to perform real-time troubleshooting for ADVPN negotiation?

- A. get router info routing-table all
- B. diagnose debug application ike
- C. diagnose vpn tunnel list
- D. get ipsec tunnel list

**Answer:** B

#### Explanation:

IKE real-time debug - useful when debugging ADVPN shortcut messages and spoke-to-spoke negotiations.

- diagnose debug console timestamp enable
- diagnose vpn ike log filter clear
- diagnose vpn ike log filter mdst-addr4 <ip.of.hub> <ip.of.spoke>
- diagnose debug application ike -1
- diagnose debug enable

#### NEW QUESTION 38

Which two tasks are part of using central VPN management? (Choose two.)

- A. You can configure full mesh, star, and dial-up VPN topologies.
- B. You must enable VPN zones for SD-WAN deployments.
- C. FortiManager installs VPN settings on both managed and external gateways.
- D. You configure VPN communities to define common IPsec settings shared by all VPN gateways.

**Answer:** AD

#### NEW QUESTION 39

Which SD-WAN setting enables FortiGate to delay the recovery of ADVPN shortcuts?

- A. hold-down-time
- B. link-down-failover
- C. auto-discovery-shortcuts
- D. idle-timeout

**Answer:** A

#### NEW QUESTION 42

Which three matching traffic criteria are available in SD-WAN rules? (Choose three.)

- A. Type of physical link connection
- B. Internet service database (ISDB) address object
- C. Source and destination IP address
- D. URL categories
- E. Application signatures

**Answer:** BCE

#### NEW QUESTION 44

Refer to the exhibit.

```
# diagnose sys session list

session info: proto=6 proto_state=01 duration=39 expire=3593 timeout=3600 flags=00000000
socktype=0 sockport=0 av_idx=0 use=4
state=may_dirty npu
origin->sink: org pre->post, reply pre->post dev=7->5/5->7 gwy=10.10.10.1/10.9.31.160
hook=pre dir=org act=noop 10.9.31.160:7932->10.0.1.7:22(0.0.0.0:0)
hook=post dir=reply act=noop 10.0.1.7:22->10.9.31.160:7932(0.0.0.0:0)
pos/(before,after) 0/(0,0), 0/(0,0)
misc=0 policy_id=1 auth_info=0 chk_client_info=0 vd=0
serial=00045e02 tos=ff/ff app_list=0 app=0 url_cat=0
sdwan_mbr_seq=1 sdwan_service_id=1
rpd_b_link_id=80000000 rpd_b_svc_id=0 ngfwid=n/a
npu_state=0x4000c00
npu_info: flag=0x81/0x81, offload=8/8, ips_offload=0/0, epid=64/76, ipid=76/64,
vlan=0x0000/0x0000
vlid=76/64, vtag_in=0x0000/0x0000 in_npu=1/1, out_npu=1/1, fwd_en=0/0, qid=2/2
reflect info 0:
dev=7->6/6->7
npu_state=0x4000800
npu_info: flag=0x00/0x81, offload=0/8, ips_offload=0/0, epid=0/76, ipid=0/65, vlan=0x0000/0x0000
vlid=0/65, vtag_in=0x0000/0x0000 in_npu=0/1, out_npu=0/1, fwd_en=0/0, qid=0/2
total reflect session num: 1
total session 1

# diagnose netlink interface list

if=port1 family=00 type=1 index=5 mtu=1500 link=0 master=0
if=port2 family=00 type=1 index=6 mtu=1500 link=0 master=0
if=port3 family=00 type=1 index=7 mtu=1500 link=0 master=0
```

The exhibit shows the details of a session and the index numbers of some relevant interfaces on a FortiGate appliance that supports hardware offloading. Based on the information shown in the exhibits, which two statements about the session are true? (Choose two.)

- A. The reply direction of the asymmetric traffic flows from port2 to port3.
- B. The auxiliary session can be offloaded to hardware.
- C. The original direction of the symmetric traffic flows from port3 to port2.
- D. The main session cannot be offloaded to hardware.

**Answer:** AB

#### NEW QUESTION 46

What are two benefits of using forward error correction (FEC) in IPsec VPNs? (Choose two.)

- A. FEC supports hardware offloading.
- B. FEC improves reliability of noisy links.
- C. FEC transmits parity packets that can be used to reconstruct packet loss.
- D. FEC can leverage multiple IPsec tunnels for parity packets transmission.

**Answer:** BC

#### NEW QUESTION 49

Exhibit.

```
id=20010 trace_id=1402 func=print_pkt_detail line=5588 msg="vd-root:0 received a
packet(proto=6, 10.1.10.1:52490->42.44.50.10:443) from port3. flag [.] , seq 1213725680,
ack 1169005655, win 65535"
id=20010 trace_id=1402 func=resolve_ip_tuple_fast line=5669 msg="Find an existing
session, id-00001ca4, original direction"
id=20010 trace_id=1402 func=fw_forward_dirty_handler line=447 msg="Denied by quota
check"
```

Which conclusion about the packet debug flow output is correct?

- A. The total number of daily sessions for 10.1.10.1 exceeded the maximum number of concurrent sessions configured in the traffic shaper, and the packet was dropped.
- B. The packet size exceeded the outgoing interface MTU.
- C. The number of concurrent sessions for 10.1.10.1 exceeded the maximum number of concurrent sessions configured in the traffic shaper, and the packet was dropped.
- D. The number of concurrent sessions for 10.1.10.1 exceeded the maximum number of concurrent sessions configured in the firewall policy, and the packet was dropped.

**Answer:** C

#### Explanation:

In a Per-IP shaper configuration, if an IP address exceeds the configured concurrent session limit, the message "Denied by quota check" appears. SD-WAN 7.0 Study Guide page 287

#### NEW QUESTION 53

Which statement about using BGP for ADVPN is true?

- A. IBGP is preferred over EBGp, because IBGP preserves next hop information.
- B. You must use BGP to route traffic for both overlay and underlay links.
- C. You must configure BGP communities.
- D. You must configure AS path prepending.

Answer: A

NEW QUESTION 54

Refer to the exhibits.

Exhibit A

Edit Traffic Shaping Policy

IP Version

IPv4IPv6

Name

Limit\_YouTube

Status

EnableDisable

Comments

If Traffic Matches:

Source Internet Service

Source Address

LAN-net

Source User

Source User Group

Destination Internet Service

Destination Address

all

Schedule

Service

ALL

Application

YouTube

Application Category

Application Group

URL Category

Type Of Service

0x00

Type Of Service Mask

0x00

Then:

Action

Apply ShaperAssign Group

Outgoing Interface

underlay

Shared Shaper

low-priority

Reverse Shaper

low-priority

Per-IP Shaper

Differentiated Services

Differentiated Services Reverse

Exhibit B

### Edit Firewall Policy

ID	1
Name	DIA
ZTNA	<span>Disable</span> <span>Full ZTNA</span> <span>IP/MAC filtering</span>
Incoming Interface	LAN
Outgoing Interface	underlay
Source Internet Service	<input type="checkbox"/>
IPv4 Source Address	LAN-net
IPv6 Source Address	+
Source User	+
Source User Group	+
FSSO Groups	+
Destination Internet Service	<input type="checkbox"/>
IPv4 Destination Address	all
IPv6 Destination Address	+
Service	ALL
Schedule	always
Action	<span>Deny</span> <span>Accept</span> <span>IPSEC</span>
Inspection Mode	<span>Flow-based</span> <span>Proxy-based</span>
<b>Firewall/Network Options</b>	
NAT	<input checked="" type="checkbox"/> <span>NAT</span> <span>NAT46</span> <span>NAT64</span>
IP Pool Configuration	<span>Use Outgoing Interface Address</span> <span>Use Dynamic IP Pool</span>
Preserve Source Port	<input type="checkbox"/>
Protocol Options	default

### Disclaimer Options

Display Disclaimer ☐

**Security Profiles** ☐

SSL/SSH Inspection deep-inspection

Decrypted Traffic Mirror +

**Traffic Shaping Options**

Shared Shaper +

Reverse Shaper +

Per-IP Shaper +

**Logging Options**

Log Allowed Traffic No Log Log Security Events Log All Sessions

☐ Capture Packets

☐ Generate Logs when Session Starts

Exhibit A shows the traffic shaping policy and exhibit B shows the firewall policy. The administrator wants FortiGate to limit the bandwidth used by YouTube. When testing, the administrator determines that FortiGate does not apply traffic shaping on YouTube traffic. Based on the policies shown in the exhibits, what configuration change must be made so FortiGate performs traffic shaping on YouTube traffic?

- A. Destination internet service must be enabled on the traffic shaping policy.
- B. Application control must be enabled on the firewall policy.
- C. Web filtering must be enabled on the firewall policy.
- D. Individual SD-WAN members must be selected as the outgoing interface on the traffic shaping policy.

Answer: B

**NEW QUESTION 57**

Refer to the exhibit.

### Edit Performance SLA

Name	VPN_HTTP
IP Version	<span>IPv4</span> <span>IPv6</span>
Probe Mode	<span>Active</span> <span>Passive</span> <span>Prefer Passive</span>
Protocol	<span>Ping</span> <span>TCP ECHO</span> <span>UDP ECHO</span> <span>HTTP</span> <span>TWAMP</span> <span>DNS</span> <span>TC</span>
Server	10.1.0.7
Port	0
Participants	<span>All SD-WAN Members</span> <span>Specify</span>
<div> <div></div> <div>T_INET_0_0</div> <div>T_INET_1_0</div> <div>T_MPLS_0</div> </div> <div>3 Entries Selected</div>	
Enable Probe Packets	<input checked="" type="checkbox"/>

http-get	/
http-match	successfully

Based on the exhibit, which two statements are correct about the health of the selected members? (Choose two.)

- A. After FortiGate switches to active mode, FortiGate never fails back to passive monitoring.
- B. During passive monitoring, FortiGate can't detect dead members.
- C. FortiGate can offload the traffic that is subject to passive monitoring to hardware.
- D. FortiGate passively monitors the member if TCP traffic is passing through the member.

**Answer:** BD

#### NEW QUESTION 60

.....

## Thank You for Trying Our Product

### We offer two products:

1st - We have Practice Tests Software with Actual Exam Questions

2nd - Questions and Answers in PDF Format

### NSE7\_SDW-7.0 Practice Exam Features:

- \* NSE7\_SDW-7.0 Questions and Answers Updated Frequently
- \* NSE7\_SDW-7.0 Practice Questions Verified by Expert Senior Certified Staff
- \* NSE7\_SDW-7.0 Most Realistic Questions that Guarantee you a Pass on Your FirstTry
- \* NSE7\_SDW-7.0 Practice Test Questions in Multiple Choice Formats and Updatesfor 1 Year

**100% Actual & Verified — Instant Download, Please Click**  
**[Order The NSE7\\_SDW-7.0 Practice Test Here](#)**