

## Exam Questions 300-410

Implementing Cisco Enterprise Advanced Routing and Services (ENARSI)

<https://www.2passeasy.com/dumps/300-410/>



### NEW QUESTION 1

Refer to the exhibit.

```

config t
flow record v4_r1
match ipv4 tos
match ipv4 protocol
match ipv4 source address
match ipv4 destination address
match transport source-port
match transport destination-port
collect counter bytes long
collect counter packets long
!
flow exporter EXPORTER-1
destination 172.16.10.2
transport udp 90
exit
!
flow monitor FLOW-MONITOR-1
record v4_r1
exit
!
ip cef
!
interface Ethernet0/0.1
ip address 172.16.6.2 255.255.255.0
ip flow monitor FLOW-MONITOR-1 input
!

```

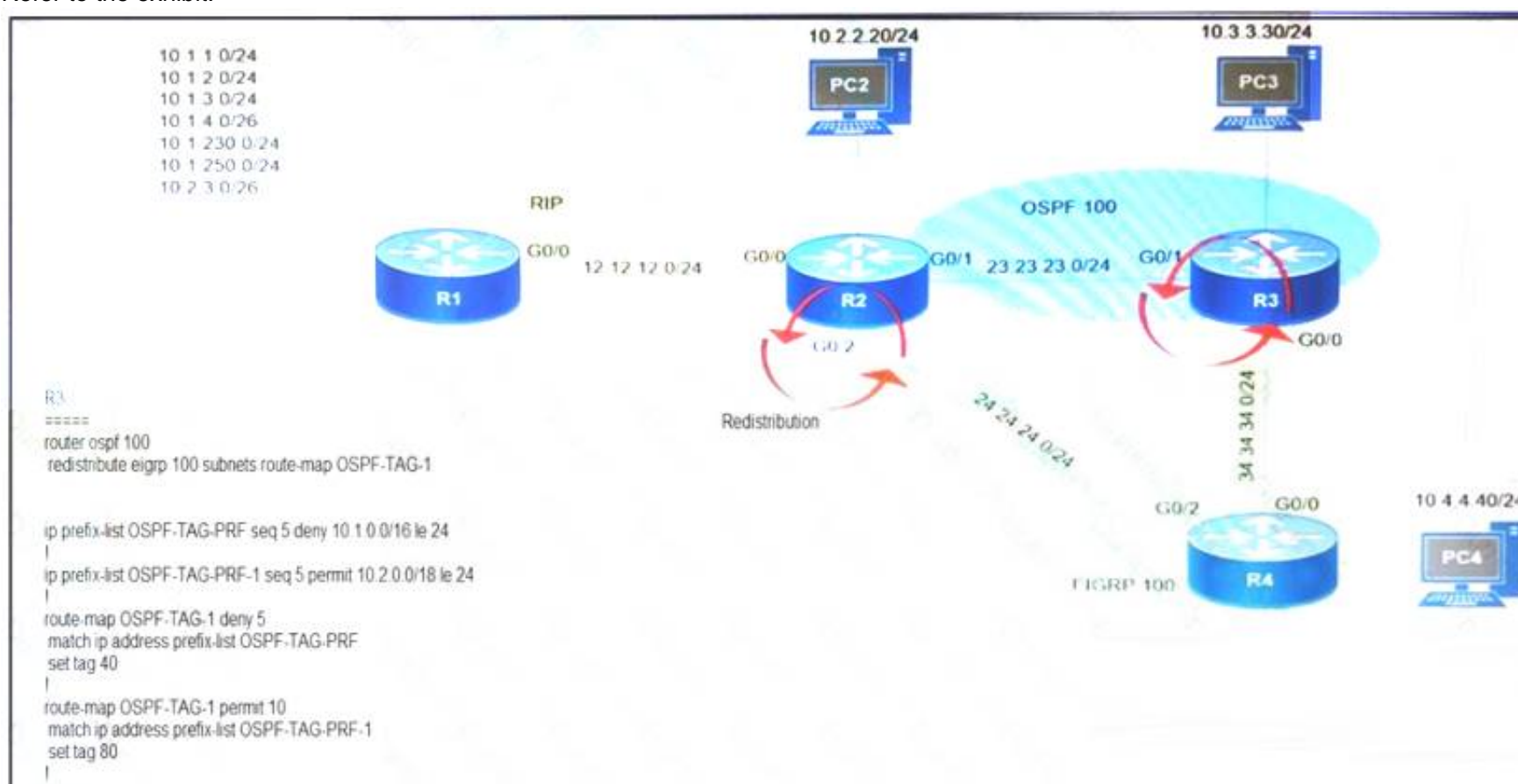
Why is the remote NetFlow server failing to receive the NetFlow data?

- A. The flow exporter is configured but is not used.
- B. The flow monitor is applied in the wrong direction.
- C. The flow monitor is applied to the wrong interface.
- D. The destination of the flow exporter is not reachable.

Answer: D

### NEW QUESTION 2

Refer to the exhibit.



Which subnet is redistributed from EIGRP to OSPF routing protocols?

- A. 10.2.2.0/24
- B. 10.1.4.0/26
- C. 10.1.2.0/24

D. 10.2.3.0/26

Answer: A

NEW QUESTION 3

A network engineer is investigating a flapping (up/down) interface issue on a core switch that is synchronized to an NTP server. Log output currently does not show the time of the flap. Which command allows the logging on the switch to show the time of the flap according to the clock on the device?

- A. service timestamps log uptime
- B. clock summer-time mst recurring 2 Sunday mar 2:00 1 Sunday nov 2:00
- C. service timestamps log datetime localtime show-timezone
- D. clock calendar-valid

Answer: A

NEW QUESTION 4

Drag and drop the SNMP attributes in Cisco IOS devices from the left onto the correct SNMPv2c or SNMPV3 categories on the right.

community string

username and password

authentication

no encryption

privileged

read-only

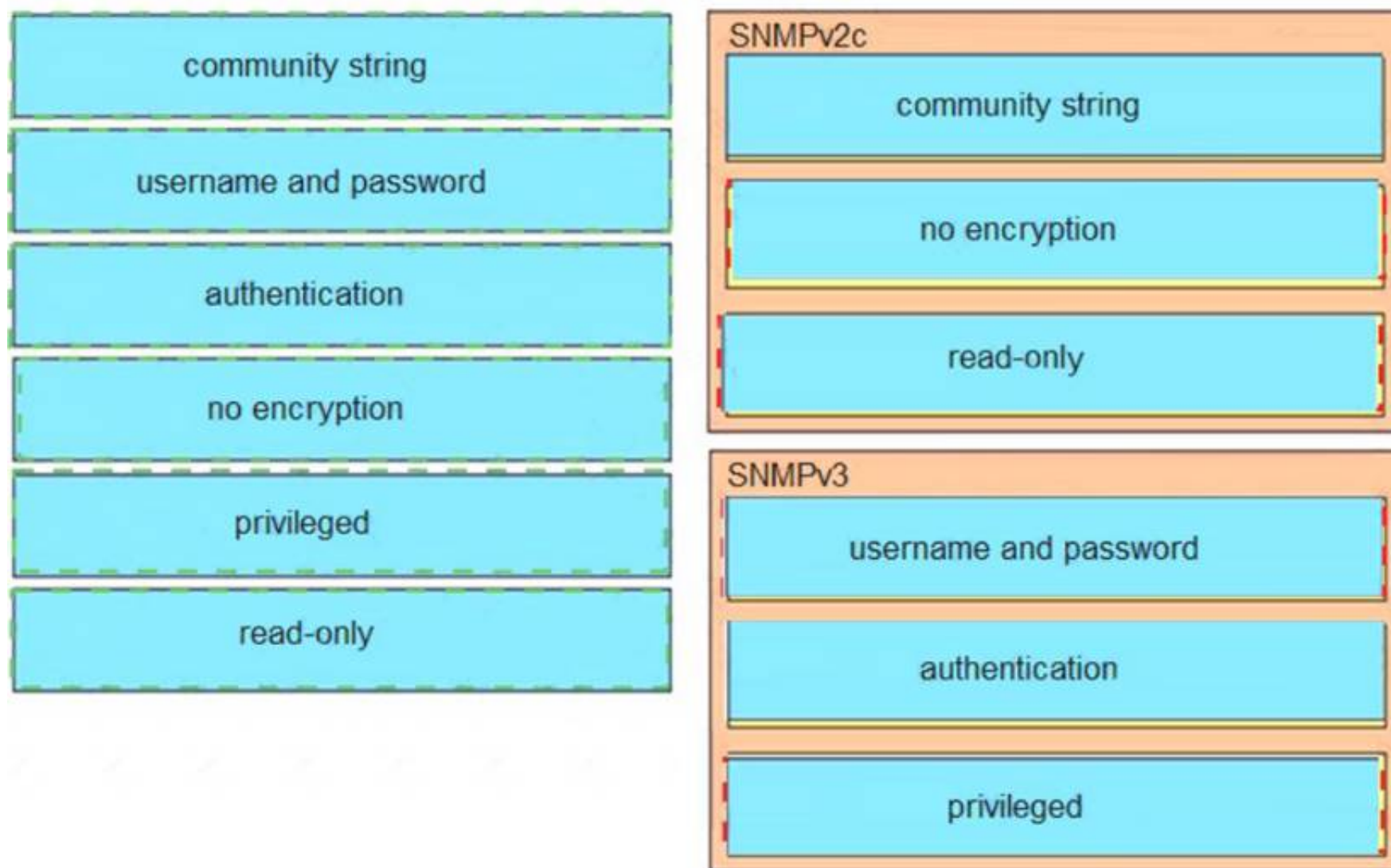
SNMPv2c

SNMPv3

- A. Mastered
- B. Not Mastered

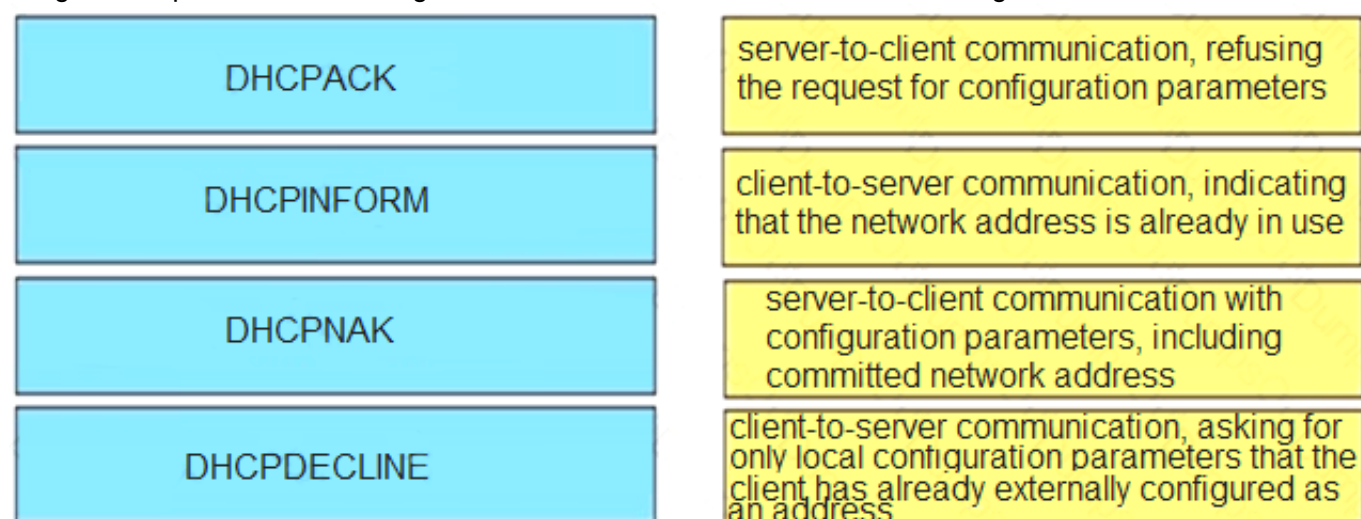
Answer: A

Explanation:



#### NEW QUESTION 5

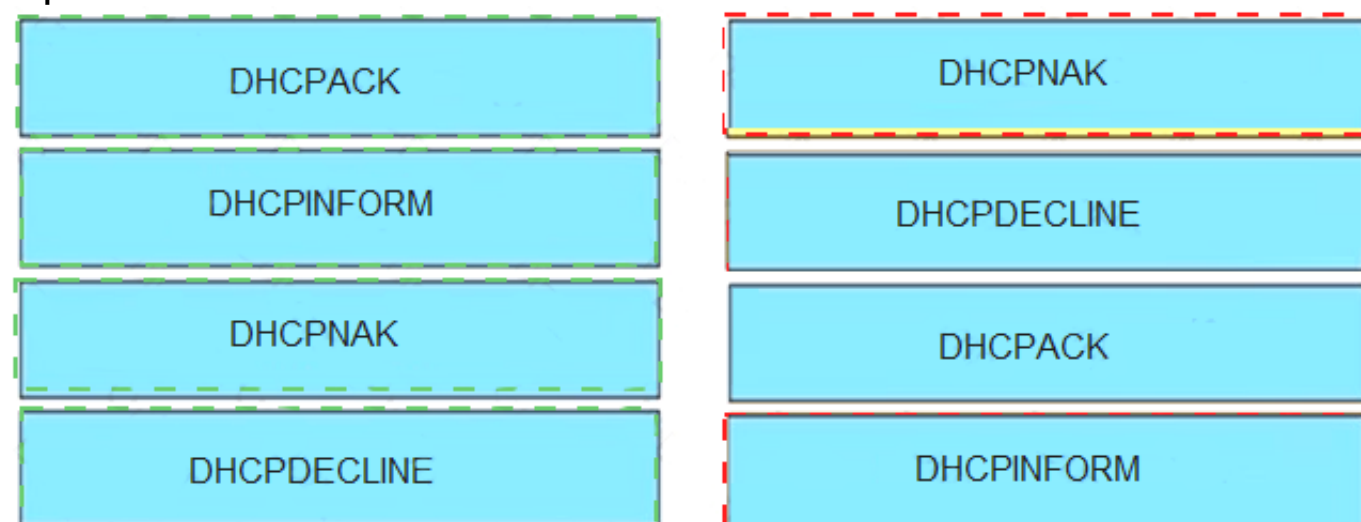
Drag and drop the DHCP messages from the left onto the correct uses on the right.



- A. Mastered
- B. Not Mastered

Answer: A

Explanation:



#### NEW QUESTION 6

Refer to the exhibit.



```
R1#show running-config | section dhcp
ip dhcp excluded-address 192.168.1.1 192.168.1.49
ip dhcp pool DHCP
  network 192.168.1.0 255.255.255.0
  default-router 192.168.1.1
  dns-server 8.8.8.8
  lease 0 12
```

Users report that IP addresses cannot be acquired from the DHCP server. The DHCP server is configured as shown. About 300 total nonconcurrent users are using this DHCP server, but none of them are active for more than two hours per day. Which action fixes the issue within the current resources?

- A. Modify the subnet mask to the network 192.168.1.0 255.255.254.0 command in the DHCP pool
- B. Configure the DHCP lease time to a smaller value
- C. Configure the DHCP lease time to a bigger value
- D. Add the network 192.168.2.0 255.255.255.0 command to the DHCP pool

**Answer: B**

#### NEW QUESTION 7

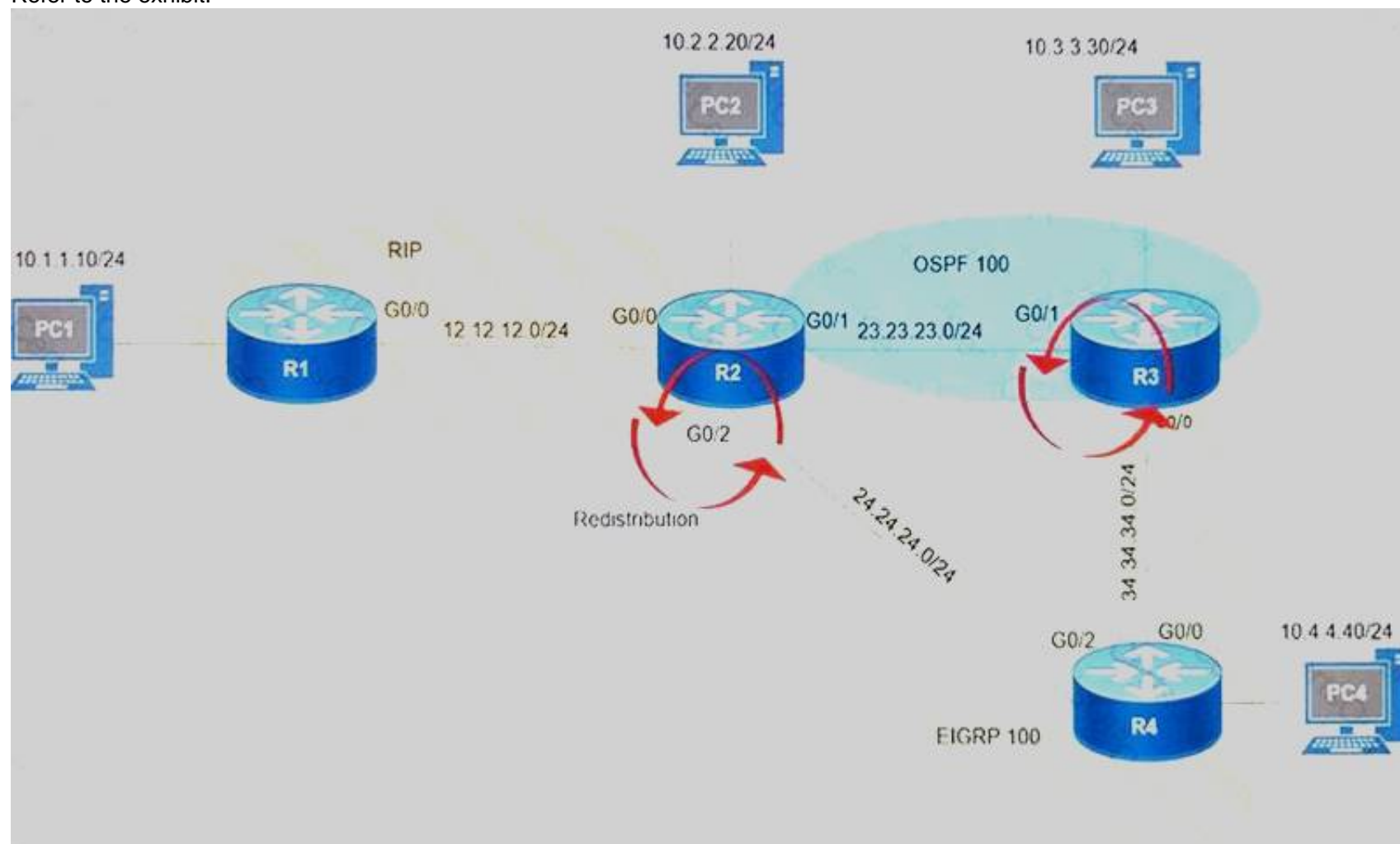
Which configuration adds an IPv4 interface to an OSPFv3 process in OSPFv3 address family configuration?

- A. router ospfv3 1 address-family ipv4
- B. Router(config-router)#ospfv3 1 ipv4 area 0
- C. Router(config-if)#ospfv3 1 ipv4 area 0
- D. router ospfv3 1 address-family ipv4 unicast

**Answer: B**

#### NEW QUESTION 8

Refer to the exhibit.



After redistribution is enabled between the routing protocols; PC2, PC3, and PC4 cannot reach PC1. Which action can the engineer take to solve the issue so that all the PCs are reachable?

- A. Set the administrative distance 100 under the RIP process on R2.
- B. Filter the prefix 10.1.1.0/24 when redistributed from OSPF to EIGRP.
- C. Filter the prefix 10.1.1.0/24 when redistributed from RIP to EIGRP.
- D. Redistribute the directly connected interfaces on R2.

**Answer: B**

#### NEW QUESTION 9

Refer to the exhibit.

```
R1#show policy-map control-plane
Control Plane
  Service-policy input: CoPP-BGP
  Class-map: BGP (match all)
    2716 packets, 172071 bytes
    5 minute offered rate 0000 bps, drop rate 0000 bps
    Match: access-group name BGP
    drop

  Class-map: class-default (match-any)
    5212 packets, 655966 bytes
    5 minute offered rate 0000 bps, drop rate 0000 bps
    Match: any
```

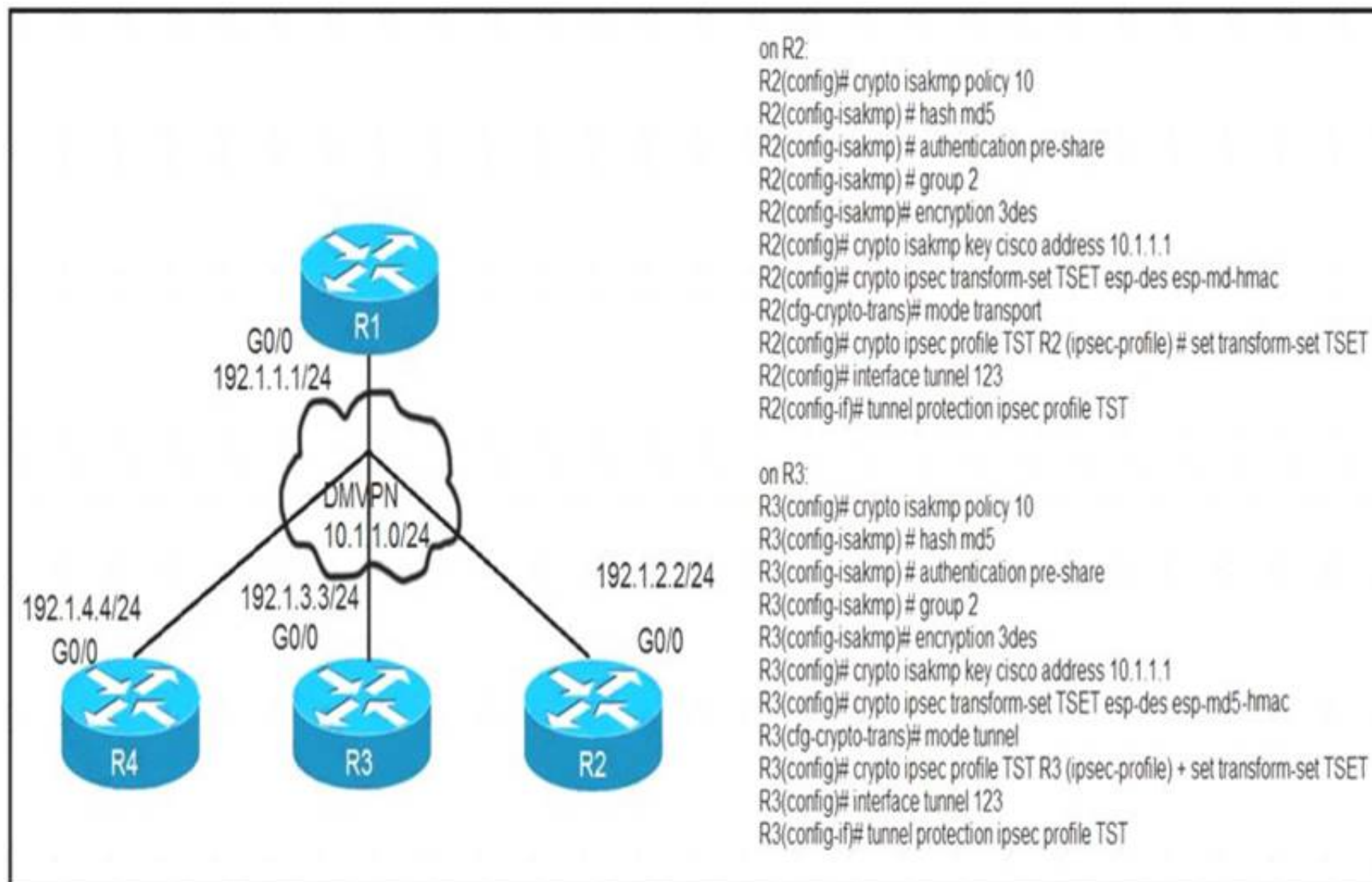
What is the result of applying this configuration?

- A. The router can form BGP neighborships with any other device.
- B. The router cannot form BGP neighborships with any other device.
- C. The router cannot form BGP neighborships with any device that is matched by the access list named "BGP".
- D. The router can form BGP neighborships with any device that is matched by the access list named "BGP".

Answer: D

#### NEW QUESTION 10

Refer to the exhibit.



After applying IPsec, the engineer observed that the DMVPN tunnel went down, and both spoke-to-spoke and hub were not establishing. Which two actions resolve the issue? (Choose two.)

- A. Change the mode from mode tunnel to mode transport on R3.
- B. Remove the crypto isakmp key cisco address 10.1.1.1 on R2 and R3.
- C. Configure the crypto isakmp key cisco address 192.1.1.1 on R2 and R3.
- D. Configure the crypto isakmp key cisco address 0.0.0.0 on R2 and R3.
- E. Change the mode from mode transport to mode tunnel on R2.

Answer: AD

#### NEW QUESTION 10

Refer to the exhibit.

```
!
neighbor 10.222.1.1 route-map SET-WEIGHT in
neighbor 10.222.1.1 remote-as 1
!
ip as-path access-list 200 permit ^690$
ip as-path access-list 200 permit ^1800
!
route-map SET-WEIGHT permit 10
match as-path 200
set local-preference 250
set weight 200
```

A router receiving BGP routing updates from multiple neighbors for routers in AS 690. What is the reason that the router still sends traffic that is destined to AS 690 to a neighbor other than 10.222.1.1?

- A. The local preference value in another neighbor statement is higher than 250.
- B. The local preference value should be set to the same value as the weight in the route map.
- C. The route map is applied in the wrong direction.
- D. The weight value in another statement is higher than 200.

**Answer:** D

#### NEW QUESTION 14

Which attribute eliminates LFAs that belong to protected paths in situations where links in a network are connected through a common fiber?

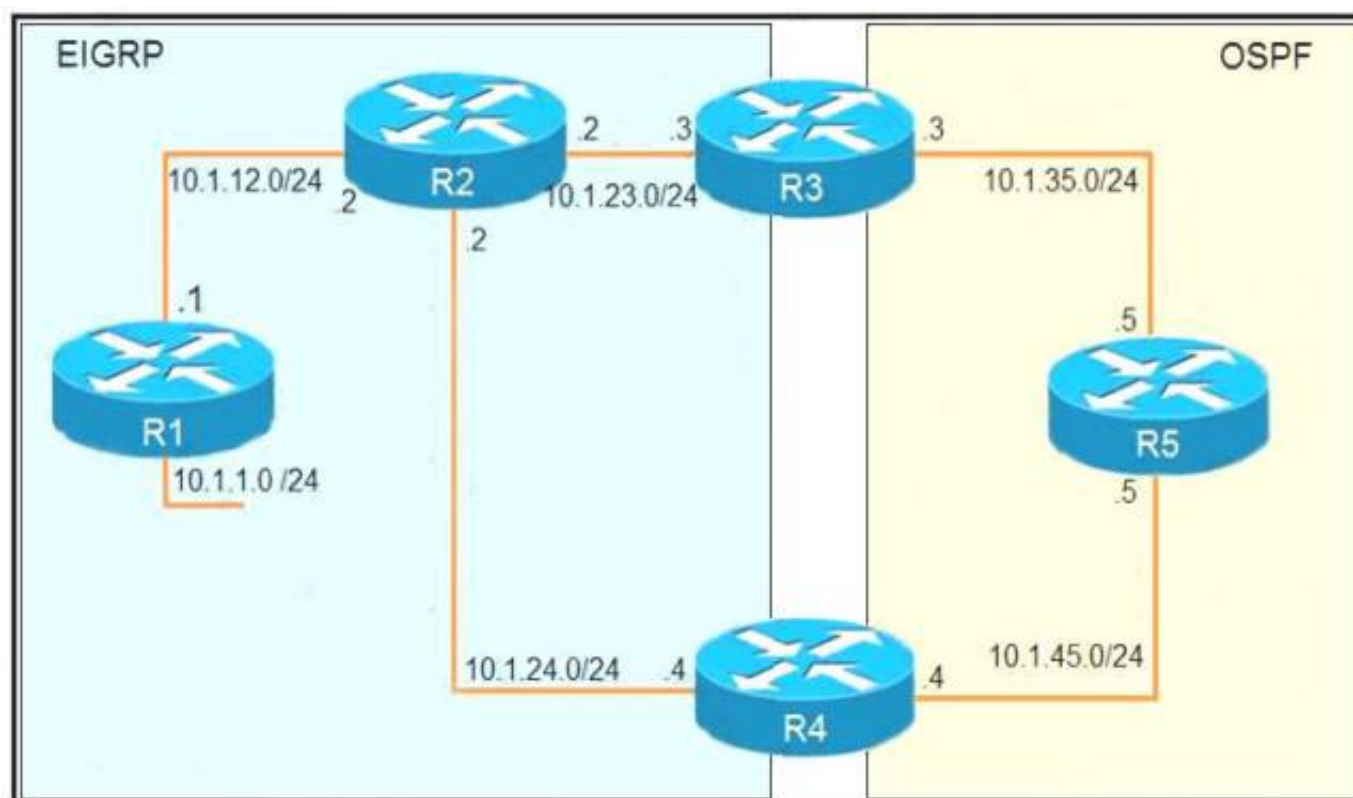
- A. shared risk link group-disjoint
- B. linecard-disjoint
- C. lowest-repair-path-metric
- D. interface-disjoint

**Answer:** A

#### NEW QUESTION 15

Refer to the exhibit.





```
R1
router eigrp 1
 redistribute connected
 network 10.1.12.0 0.0.0.0

R3
router ospf 1
 redistribute eigrp 1 subnets
 network 10.1.35.0 0.0.0.0 area 0

R4
router eigrp 1
 redistribute ospf 1 metric 2000000 1 255 1 1500
!
router ospf 1
 network 10.1.45.0 0.0.0.0 area 0

R5#traceroute 10.1.1.1

Type escape sequence to abort.
Tracing the route to 10.1.1.1

 0 10.1.35.3 80 msec 44 msec 20 msec
 1 10.1.23.2 44 msec 104 msec 64 msec
 2 10.1.24.4 44 msec 64 msec 40 msec
 3 10.1.45.5 24 msec 40 msec 20 msec
 4 10.1.35.3 92 msec 144 msec 148 msec
 5 10.1.23.2 108 msec 76 msec 80 msec
<output truncated>
```

The output of the trace route from R5 shows a loop in the network. Which configuration prevents this loop?

A)

R3

```
router ospf 1
```

```
 redistribute eigrp 1 subnets route-map SET-TAG
```

```
!
```

```
route-map SET-TAG permit 10
```

```
 set tag 1
```

R4

```
router eigrp 1
```

```
 redistribute ospf 1 metric 2000000 1 255 1 1500 route-map FILTER-TAG
```

```
!
```

```
route-map FILTER-TAG deny 10
```

```
 match tag 1
```

```
!
```

```
route-map FILTER-TAG permit 20
```

B)



```
R3
router eigrp 1
 redistribute OSPF 1 route-map SET-TAG
!
route-map SET-TAG permit 10
 set tag 1
```

```
R4
router eigrp 1
 redistribute ospf 1 metric 2000000 1 255 1 1500 route-map FILTER-TAG
 network 10.1.24.4 0.0.0.0
!
route-map FILTER-TAG deny 10
 match tag 1
!
route-map FILTER-TAG permit 20
```

C)

```
R3
router ospf 1
 redistribute eigrp 1 subnets route-map SET-TAG
!
route-map SET-TAG permit 10
 set tag 1
```

```
R4
router eigrp 1
 redistribute ospf 1 metric 2000000 1 255 1 1500 route-map FILTER-TAG
!
route-map FILTER-TAG permit 10
 match tag 1
```

D)

```
R3
router ospf 1
 redistribute eigrp 1 subnets route-map SET-TAG
!
route-map SET-TAG deny 10
 set tag 1
```

```
R4
router eigrp 1
 redistribute ospf 1 metric 2000000 1 255 1 1500 route-map FILTER-TAG
!
route-map FILTER-TAG deny 10
 match tag 1
```

- A. Option A
- B. Option B
- C. Option C
- D. Option D

**Answer:** B

#### NEW QUESTION 20

Which command allows traffic to load-balance in an MPLS Layer 3 VPN configuration?

- A. multi-paths eibgp 2
- B. maximum-paths 2
- C. maximum-paths ibgp 2
- D. multi-paths 2

**Answer:** B

### NEW QUESTION 23

While troubleshooting connectivity issues to a router, these details are noticed:

- Standard pings to all router interfaces, including loopbacks, are successful.
- Data traffic is unaffected.
- SNMP connectivity is intermittent.
- SSH is either slow or disconnects frequently.

Which command must be configured first to troubleshoot this issue?

- A. show policy-map control-plane
- B. show policy-map
- C. show interface | inc drop
- D. show ip route

**Answer: A**

### NEW QUESTION 27

Refer to the exhibit.

```
R1#show running-config | include aaa
aaa new-model
aaa authentication login default group tacacs+ local
aaa authentication login Console local
R1#show running-config | section line
line con 0
  logging synchronous
R1#
```

An engineer is trying to configure local authentication on the console line, but the device is trying to authenticate using TACACS+. Which action produces the desired configuration?

- A. Add the aaa authentication login default none command to the global configuration.
- B. Replace the capital “C” with a lowercase “c” in the aaa authentication login Console local command.
- C. Add the aaa authentication login default group tacacs+ local-case command to the global configuration.
- D. Add the login authentication Console command to the line configuration

**Answer: D**

### NEW QUESTION 30

Refer to the exhibit.

```
Router# show tag-switching tdp bindings
(...)
tib entry: 10.10.10.1/32, rev 31
  local binding: tag: 18
  remote binding: tsr: 10.10.10.1:0, tag: imp-null
  remote binding: tsr: 10.10.10.2:0, tag: 18
  remote binding: tsr: 10.10.10.6:0, tag: 21
tib entry: 10.10.10.2/32, rev 22
  local binding: tag: 17
  remote binding: tsr: 10.10.10.2:0, tag: imp-null
  remote binding: tsr: 10.10.10.1:0, tag: 19
  remote binding: tsr: 10.10.10.6:0, tag: 22
```

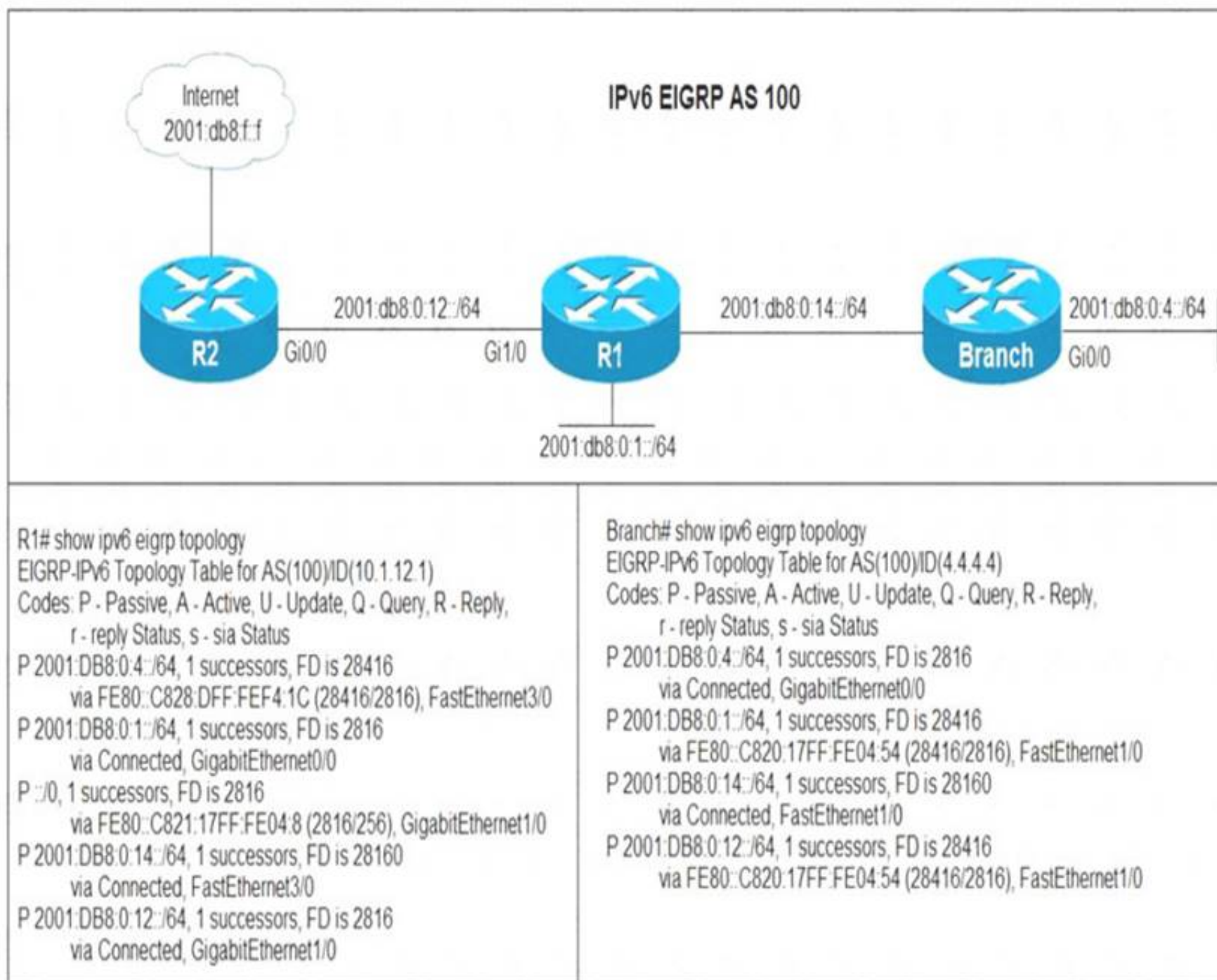
What does the imp-null tag represent in the MPLS VPN cloud?

- A. Pop the label
- B. Impose the label
- C. Include the EXP bit
- D. Exclude the EXP bit

**Answer: C**

### NEW QUESTION 35

Refer to the exhibit.



Users in the branch network of 2001:db8:0:4::/64 report that they cannot access the Internet. Which command is issued in IPv6 router EIGRP 100 configuration mode to solve this issue?

- A. Issue the eigrp stub command on R1.
- B. Issue the no eigrp stub command on R1.
- C. Issue the eigrp stub command on R2.
- D. Issue the no eigrp stub command on R2.

**Answer: A**

#### NEW QUESTION 38

Which method changes the forwarding decision that a router makes without first changing the routing table or influencing the IP data plane?

- A. nonbroadcast multiaccess
- B. packet switching
- C. policy-based routing
- D. forwarding information base

**Answer: C**

#### NEW QUESTION 39

Refer to the exhibit.



```
Router#sh ip route ospf
<output omitted>
Gateway is last resort is not set

    10.0.0.0/24 is subnetted, 1 subnets
    o E2    10.0.0.0 [110/20] via 192.168.12.2, 00:00:10, Ethernet0/0
    o      192.168.3.0/24 [110/20] via 192.168.12.2, 00:00:50, Ethernet0/0
Router#

Router#show ip bgp
<output omitted>

    Network        Next Hop        Metric      LocPrf        Weight      Path
>*   192.168.1.1/32    0.0.0.0          0
>*   192.168.3.0      192.168.12.2    20
>*   192.168.12.0     0.0.0.0          0
Router#show running-config | section router bgp
router bgp 65000
bgp log-neighbor-changes
redistribute ospf 1
Router#
```

An engineer is trying to redistribute OSPF to BGP, but not all of the routes are redistributed. What is the reason for this issue?

- A. By default, only internal routes and external type 1 routes are redistributed into BGP
- B. Only classful networks are redistributed from OSPF to BGP
- C. BGP convergence is slow, so the route will eventually be present in the BGP table
- D. By default, only internal OSPF routes are redistributed into BGP

**Answer:** A

#### NEW QUESTION 42

Refer to the exhibit.

```
Router#show running-config | include ip route
ip route 192.168.2.2 255.255.255.255 209.165.200.225 130
Router#show ip route

<output omitted>

Gateway of last resort is not set

    192.168.1.0/32 is subnetted, 1 subnets
C       192.168.1.1 is directly connected, Loopback0
    192.168.2.0/32 is subnetted, 1 subnets
O       192.168.2.2[110/11] via 192.168.12.2, 00:52:09, Ethernet0/0
    192.168.12.0/24 is variably subnetted, 2 subnets, 2 masks
C       192.168.12.0/24 is directly connected, Ethernet0/0
L       192.168.12.1/32 is directly connected, Ethernet0/0
    209.165.200.0/24 is variably subnetted, 2 subnets, 2 masks
C       209.165.200.0/24 is directly connected, Ethernet0/1
        209.165.200.226/32 is directly connected, Ethernet0/1
```

An engineer configures a static route on a router, but when the engineer checks the route to the destination, a different next hop is chosen. What is the reason for this?

- A. Dynamic routing protocols always have priority over static routes.
- B. The metric of the OSPF route is lower than the metric of the static route.
- C. The configured AD for the static route is higher than the AD of OSPF.
- D. The syntax of the static route is not valid, so the route is not considered.

**Answer:** C

#### NEW QUESTION 44

Refer to the exhibit.



```
R200#show ip bgp summary
BGP router identifier 10.1.1.1, local AS number 65000
BGP table version is 26, main routing table version 26
1 network entries using 132 bytes of memory
1 path entries using 52 bytes of memory
2/1 BGP path/bestpath attribute entries using 296 bytes of memory
0 BGP route-map cache entries using 0 bytes of memory
0 BGP filter-list cache entries using 0 bytes of memory
Bitfield cache entries: current 1 (at peak 2) using 28 bytes of memory
BGP using 508 total bytes of memory
BGP activity 24/23 prefixes, 24/23 paths, scan interval 60 secs
Neighbor      V    AS MsgRcvd MsgSent   TblVer  InQ  OutQ  Up/Down  State/PfxRcd
192.0.2.2      4 65100  20335    20329     0   0    0 00:02:04  Idle (PfxCt)
R200#
```

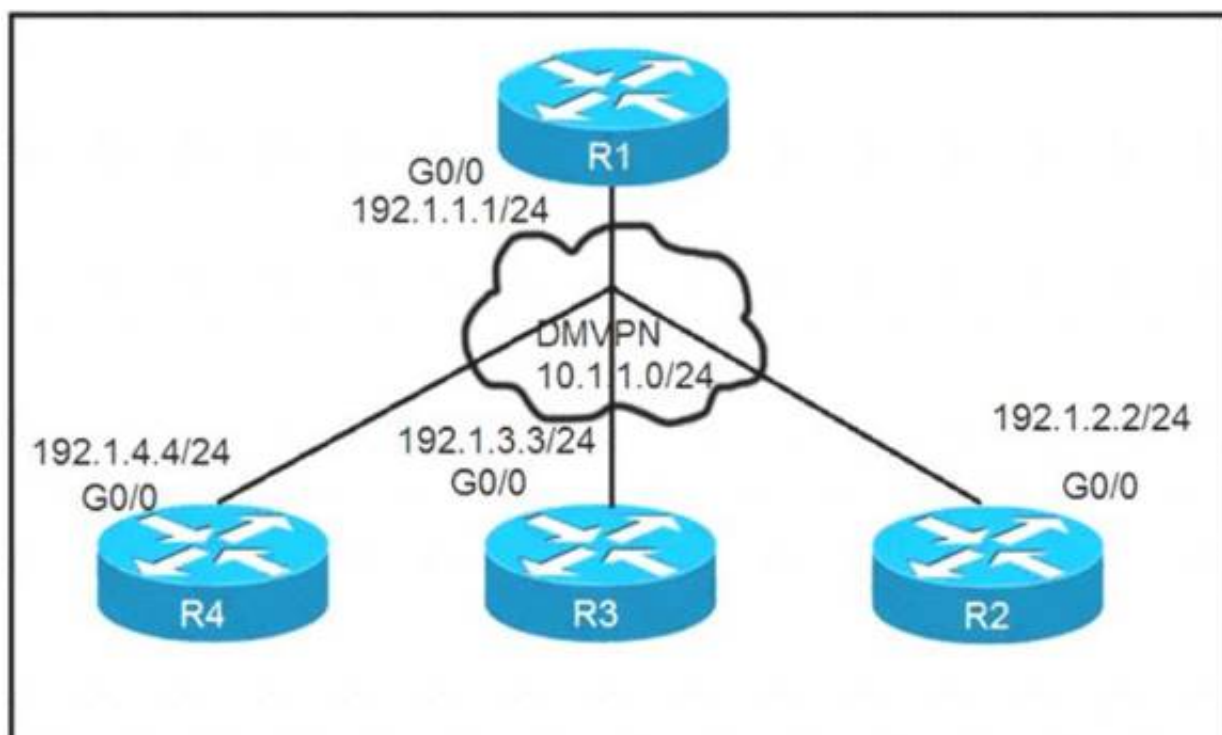
In which circumstance does the BGP neighbor remain in the idle condition?

- A. if prefixes are not received from the BGP peer
- B. if prefixes reach the maximum limit
- C. if a prefix list is applied on the inbound direction
- D. if prefixes exceed the maximum limit

**Answer:** D

#### NEW QUESTION 48

Refer to the exhibits.



```
On R1:
R1(config)# interface tunnel 1
R1(config-if)# ip address 10.1.1.1 255.255.255.0
R1(config-if)# tunnel source 192.1.1.1
R1(config-if)# tunnel mode gre multipoint
R1(config-if)# ip nhrp network-id 111

On R2:
R2(config)# interface tunnel 1
R2(config-if)# ip address 10.1.1.2 255.255.255.0
R2(config-if)# tunnel source FastEthernet0/0
R2(config-if)# tunnel mode gre multipoint
R2(config-if)# ip nhrp network-id 222
R2(config-if)# ip nhrp nhs 10.1.1.1
R2(config-if)# ip nhrp map 10.1.1.1 192.1.1.1

On R3:
R3(config)# interface tunnel 1
R3(config-if)# ip address 10.1.1.3 255.255.255.0
R3(config-if)# tunnel source FastEthernet0/0
R3(config-if)# tunnel mode gre multipoint
R3(config-if)# ip nhrp network-id 333 R3(config-if)# ip nhrp nhs 10.1.1.1
R3(config-if)# ip nhrp map 10.1.1.1 192.1.1.1

On R4:
R4(config)# interface tunnel 1
R4(config-if)# ip address 10.1.1.4 255.255.255.0
R4(config-if)# tunnel source FastEthernet0/0
R4(config-if)# tunnel mode gre multipoint
R4(config-if)# ip nhrp network-id 444
R4(config-if)# ip nhrp nhs 10.1.1.1
R4(config-if)# ip nhrp map 10.1.1.1 192.1.1.1
```

Phase-3 tunnels cannot be established between spoke-to-spoke in DMVPN. Which two commands are missing? (Choose two.)

- A. The ip nhrp redirect command is missing on the spoke routers.
- B. The ip nhrp shortcut command is missing on the spoke routers.
- C. The ip nhrp redirect command is missing on the hub router.
- D. The ip nhrp shortcut command is missing on the hub router.
- E. The ip nhrp map command is missing on the hub router.

**Answer:** BC

#### NEW QUESTION 51

Which protocol is used to determine the NBMA address on the other end of a tunnel when mGRE is used?

- A. NHRP
- B. IPsec
- C. MP-BGP
- D. OSPF

**Answer:** D

#### NEW QUESTION 56

R2 has a locally originated prefix 192.168.130.0/24 and has these configurations:

```
ip prefix-list test seq 5 permit 192.168.130.0/24
!
route-map OUT permit10
match ip address prefix-list test
set as-path prepend 65000
```

What is the result when the route-map OUT command is applied toward an eBGP neighbor R1 (1.1.1.1) by using the neighbor 1.1.1.1 route-map OUT out

command?

- A. R1 sees 192.168.130.0/24 as two AS hops away instead of one AS hop away.
- B. R1 does not accept any routes other than 192.168.130.0/24
- C. R1 does not forward traffic that is destined for 192.168.30.0/24
- D. Network 192.168.130.0/24 is not allowed in the R1 table

**Answer:** A

#### NEW QUESTION 60

Refer to the exhibit.

```
Router#show access-lists
Standard IP access list 1
    10 permit 192.168.2.2 (1 match)
Router#
Router#show route-map
route-map RM-OSPF-DL, permit, sequence 10
  Match clauses:
    ip address (access-lists): 1
  Set clauses:
    Policy routing matches: 0 packets, 0 bytes
Router#
Router#show running-config | section ospf
router ospf 1
  network 192.168.1.1 0.0.0.0 area 0
  network 192.168.12.0 0.0.0.255 area 0
  distribute-list route-map RM-OSPF-DL in
Router#
```

An engineer is trying to block the route to 192.168.2.2 from the routing table by using the configuration that is shown. The route is still present in the routing table as an OSPF route. Which action blocks the route?

- A. Use an extended access list instead of a standard access list.
- B. Change sequence 10 in the route-map command from permit to deny.
- C. Use a prefix list instead of an access list in the route map.
- D. Add this statement to the route map: route-map RM-OSPF-DL deny 20.

**Answer:** B

#### NEW QUESTION 64

Refer to the exhibit.

```
TAC+: TCP/IP open to 171.68.118.101/49 failed --
Destination unreachable; gateway or host down
AAA/AUTHEN (2546660185): status = ERROR
AAA/AUTHEN/START (2546660185): Method=LOCAL
AAA/AUTHEN (2546660185): status = FAIL
As1 CHAP: Unable to validate Response. Username chapuser: Authentication failure
```

Why is user authentication being rejected?

- A. The TACACS+ server expects "user", but the NT client sends "domain/user".
- B. The TACACS+ server refuses the user because the user is set up for CHAP.
- C. The TACACS+ server is down, and the user is in the local database.
- D. The TACACS+ server is down, and the user is not in the local database.

**Answer:** D

#### NEW QUESTION 67

Refer to the exhibit.



```
R1#show ip bgp summary
BGP router identifier 192.168.1.1, local AS number 65000
<output omitted>
Neighbor      V  AS    MsgRcvd  MsgSent    Tblver  InQ  OutQ  Up/Down  State/PfxRcd
192.168.2.2   4  65000      28      28         22     0     0   00:21:31           0

R1#show ip bgp
BGP table version is 22, local router ID is 192.168.1.1
Status codes: s suppressed, d damped, h history, * valid, > best, i – internal,
               r RIB-failure, s stale, m multipath, b backup-path, f RT-Filter,
               x best-external, a additional-path, C RIB-compressed,
Origin codes: i – IGP, e – EGP, ? – incomplete
RPKI validation codes: V valid, I invalid, N Not found

      Network                Next Hop                Metric LocPrf        Weight      Path
*>  172.16.25.0/24          209.165.200.225              0              32768         ?
R1#
```

---

```
R2#show ip bgp summary
BGP router identifier 192.168.2.2, local AS number 65000
<output omitted>
Neighbor      V  AS    MsgRcvd  MsgSent    Tblver  InQ  OutQ  Up/Down  State/PfxRcd
192.168.1.1   4  65000      29      28         3      0     0   00:22:07           1
192.168.3.3   4  65000       7       8         3      0     0   00:02:55           0

R2#show ip bgp
BGP table version is 3, local router ID is 192.168.2.2
Status codes: s suppressed, d damped, h history, * valid, > best, i – internal,
               r RIB-failure, s stale, m multipath, b backup-path, f RT-Filter,
               x best-external, a additional-path, C RIB-compressed,
Origin codes: i – IGP, e – EGP, ? – incomplete
RPKI validation codes: V valid, I invalid, N Not found

      Network                Next Hop                Metric LocPrf        Weight      Path
* i  172.16.25.0/24          209.165.200.225              0          100           0         ?
R2#
```

---

```
R3#show ip bgp summary
BGP router identifier 192.168.3.3, local AS number 65000
BGP table version is 4, main routing table version 4
Neighbor      V  AS    MsgRcvd  MsgSent    Tblver  InQ  OutQ  Up/Down  State/PfxRcd
192.168.2.2   4  65000       8       7         4      0     0   00:03:08           0
R3#
```

R2 is a route reflector, and R1 and R3 are route reflector clients. The route reflector learns the route to 172.16.25.0/24 from R1, but it does not advertise to R3. What is the reason the route is not advertised?

- A. R2 does not have a route to the next hop, so R2 does not advertise the prefix to other clients.
- B. Route reflector setup requires full IBGP mesh between the routers.
- C. In route reflector setup, only classful prefixes are advertised to other clients.
- D. In route reflector setups, prefixes are not advertised from one client to another.

Answer: A

## NEW QUESTION 72

Drag and drop the OSPF adjacency states from the left onto the correct descriptions on the right.

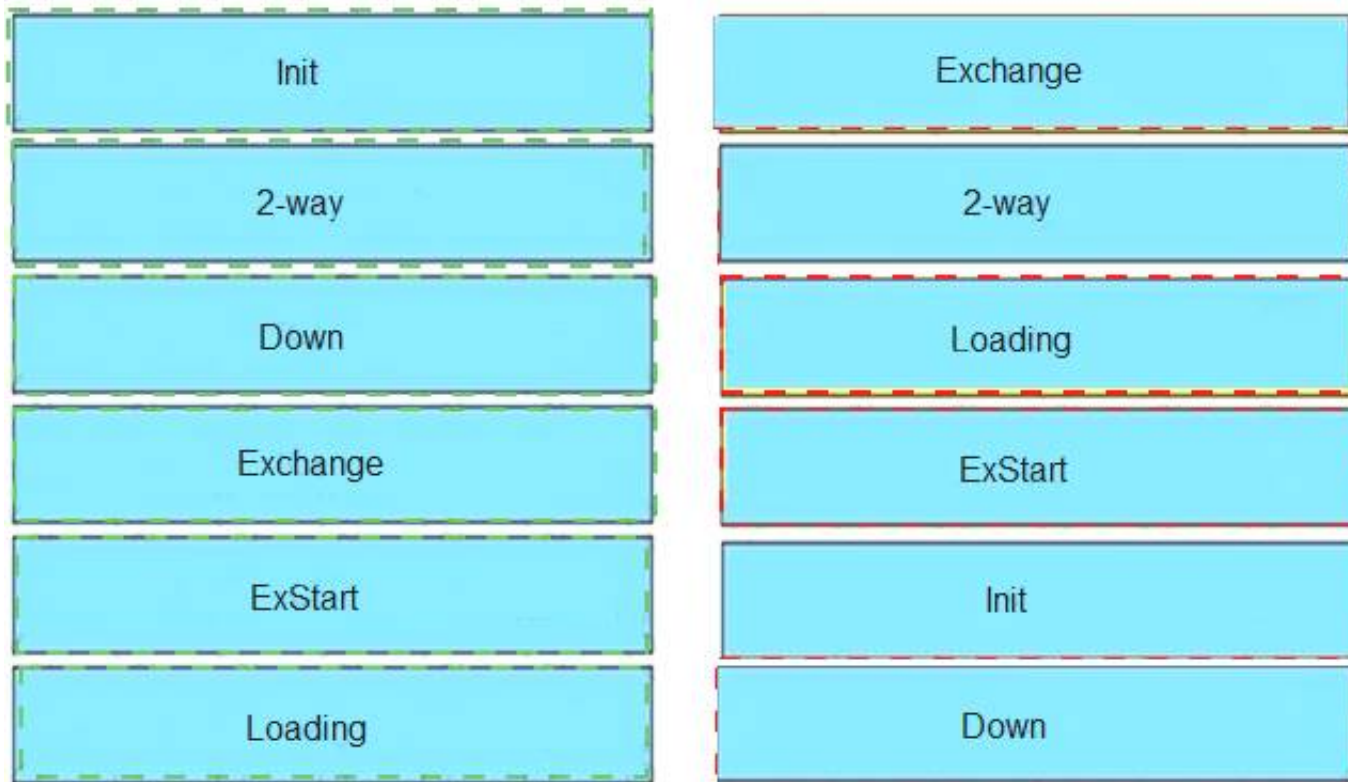
Init	Each router compares the DBD packets that were received from the other router.
2-way	Routers exchange information with other routers in the multiaccess network.
Down	The neighboring router requests the other routers to send missing entries.
Exchange	The network has already elected a DR and a backup BDR.
ExStart	The OSPF router ID of the receiving router was not contained in the hello message.
Loading	No hellos have been received from a neighbor router.

- A. Mastered
- B. Not Mastered



Answer: A

Explanation:



NEW QUESTION 75

.....

## THANKS FOR TRYING THE DEMO OF OUR PRODUCT

Visit Our Site to Purchase the Full Set of Actual 300-410 Exam Questions With Answers.

We Also Provide Practice Exam Software That Simulates Real Exam Environment And Has Many Self-Assessment Features. Order the 300-410 Product From:

<https://www.2passeasy.com/dumps/300-410/>

## Money Back Guarantee

### 300-410 Practice Exam Features:

- \* 300-410 Questions and Answers Updated Frequently
- \* 300-410 Practice Questions Verified by Expert Senior Certified Staff
- \* 300-410 Most Realistic Questions that Guarantee you a Pass on Your FirstTry
- \* 300-410 Practice Test Questions in Multiple Choice Formats and Updatesfor 1 Year