

Microsoft

Exam Questions PL-900

Microsoft Power Platform Fundamentals



NEW QUESTION 1

- (Exam Topic 1)

You manage the support team at a rapidly growing company.

Customers and support technicians need a better experience when logging and responding to support requests. You need more visibility into what the support technicians are doing every week.

You need to recommend tools to help the company's needs.

Which tools should you recommend? To answer, drag the appropriate tools to the correct requirements. Each tool may be used once, more than once, or not at all. You may need to drag the split bar between panes or scroll to view content.

NOTE: Each correct selection is worth one point.

Tools	Requirement	Tool
Power Apps	Customers must be able to submit support requests by using a website.	Tool
Microsoft Flow		Tool
Power BI		Tool
Common Data Service		Tool
	Support requests must be created and stored.	Tool
	Support technicians must be notified when a new support request is entered.	Tool
	Support technicians must be able to enter a status report for work completed during the previous week by using a mobile app.	Tool

- A. Mastered
- B. Not Mastered

Answer: A

Explanation:

Requirement	Tool
Customers must be able to submit support requests by using a website.	Power BI
Support requests must be created and stored.	Common Data Service
Support technicians must be notified when a new support request is entered.	Microsoft Flow
Support technicians must be able to enter a status report for work completed during the previous week by using a mobile app.	Power Apps

NEW QUESTION 2

- (Exam Topic 1)

A rapidly growing company wants to empower users to build apps, automate business processes, and analyze data without requiring I expertise or development skills and without increasing IT expenses and dependencies.

You need to recommend tools so that users can accomplish specific tasks.

Which tools should you recommend? To answer, select the appropriate options in the answer area. NOTE: Each correct selection is worth one point.

Scenario	Application
Build automatic workflows that access multiple data sources.	<div>▼</div> <div>AI Builder Power Apps Microsoft Flow Azure Functions Power BI</div>
Create custom apps that address specific business needs.	<div>▼</div> <div>AI Builder Power Apps Microsoft Flow Azure Functions Power BI</div>
Design insightful data visualizations.	<div>▼</div> <div>AI Builder Power Apps Microsoft Flow Azure Functions Power BI</div>

- A. Mastered
- B. Not Mastered

Answer: A

Explanation:

Box 1: Microsoft Flow

Microsoft Flow, now called Power Automate, is cloud-based software that allows employees to create and automate workflows and tasks across multiple applications and services without help from developers.

Box 2: Power Apps

PowerApps is a suite of apps, services, connectors and data platform that provides a rapid application development environment to build custom apps for your business needs.

Box 3: Power BI

Power BI is a business analytics solution that lets you visualize your data and share insights across your organization, or embed them in your app or website. Connect to hundreds of data sources and bring your data to life with live dashboards and reports.

Reference:

<https://docs.microsoft.com/en-us/powerapps/powerapps-overview>

NEW QUESTION 3

- (Exam Topic 1)

A large retail company implements Power Apps, Microsoft Flow, and the Common Data Service.

The board of directors is asking whether users are finding value in the technology. The company would like to measure and report usage of the software.

You need to recommend a tool to determine software usage. What should you recommend?

- A. Microsoft Intune
- B. Azure Stream Analytics
- C. Power Platform Analytics
- D. Dynamics 365 Product Insights

Answer: C

Explanation:

The Power Platform Analytics Usage report is the default reports seen by the logged in environment admin. It provides total app launches and daily active users across all apps in the environment. Admins can filter the view with attributes like device platform, player version, country, state, and city.

Reference:

<https://docs.microsoft.com/en-us/power-platform/admin/analytics-powerapps>

NEW QUESTION 4

- (Exam Topic 1)

You create a user-owned custom entity by using Common Data Service.

For each of the following statements, select Yes if the statement is true. Otherwise, select No. NOTE: Each correct selection is worth one point.

Statement	Yes	No
You can change the entity ownership from User to Organization-owned.	<input type="radio"/>	<input type="radio"/>
You can create a business rule for a custom entity that can be used in a Flow.	<input type="radio"/>	<input type="radio"/>

- A. Mastered
- B. Not Mastered

Answer: A

Explanation:

Box 1: No

Common Data Service supports two types of record ownership. Organization owned, and User or Team owned. This is a choice that happens at the time the entity is created and can't be changed.

Box 2: Yes

By combining conditions and actions, you can do any of the following with business rules: Set field values

Clear field values

Set field requirement levels Show or hide fields

Enable or disable fields

Validate data and show error messages

Create business recommendations based on business intelligence. Reference:

<https://docs.microsoft.com/en-us/power-platform/admin/wp-security-cds>

NEW QUESTION 5

- (Exam Topic 1)

A company uses Power Apps.

You need to perform administrative tasks for the company.

Which admin centers should you use? To answer, drag the appropriate admin centers to the correct requirements. Each admin center may be used once, more than once, or not at all. You may need to drag the split bar between panes or scroll to view content.

NOTE: Each correct selection is worth one point.

Admin centers	Requirement	Admin center
Azure Active Directory		
Dynamics 365 Admin center	Create user accounts for Power Apps.	Admin center
Power Apps Admin center	Assign the Environment Maker role to a user.	Admin center
Power BI Admin portal		

- A. Mastered
- B. Not Mastered

Answer: A

Explanation:

Box 1: Azure Active Directory
Create the company users in the Azure Active Directory. Box 2: Power Apps admin center
In the Power Apps Admin center, manage environments that you've created and those for which you have been added to the Environment Admin or System Administrator role. From the admin center, you can perform these administrative actions:
Create environments. Rename environments.
Add or remove a user or group from either the Environment Admin or Environment Maker role. Etc.
Reference:
<https://docs.microsoft.com/en-us/power-platform/admin/environments-administration> <https://docs.microsoft.com/en-us/dynamics365/marketing/dynamics-365-admin-center> <https://powerapps.microsoft.com/sv-se/blog/introducing-admin-center-for-powerapps/>

NEW QUESTION 6

- (Exam Topic 1)
A company plans to implement Power Platform apps. The company does not plan to use any development tools or plug-ins.
Which actions can you perform?
For each of the following statements, select Yes if the statement is true. Otherwise, select No. NOTE: Each correct selection is worth one point.

Statement	Yes	No
You can synchronize account names with a third-party proprietary database.	<input type="radio"/>	<input type="radio"/>
You can create invoices from orders and then send the invoices to the customer.	<input type="radio"/>	<input type="radio"/>

- A. Mastered
- B. Not Mastered

Answer: A

Explanation:

The Power Platform uses PowerApps, Power BI, and Power Automate (previously named Flow) to customize, extend, and build all the apps you need for your business and unlock the potential of Office 365 and Dynamics 365.
Reference:
<https://docs.microsoft.com/en-us/learn/powerplatform/>

NEW QUESTION 7

- (Exam Topic 1)
You have version 1.0.0.0 of a published Power Apps app. You create and publish version 2.0.0.0 of the app. A customer goes through the process of restoring the previous version of the app.
How many versions of the app are displayed in the Version tab for the app? To answer, select the appropriate option in the answer area.

You will see

0

1

2

 versions of the app.

- A. Mastered
- B. Not Mastered

Answer: A

Explanation:
Reference:
<https://docs.microsoft.com/en-us/powerapps/maker/canvas-apps/restore-an-app>

NEW QUESTION 8

- (Exam Topic 1)
A company has locations in multiple regions. The company develops solutions based on Power Apps and Power Automate. You need to recommend features to support the implementation.
Which Power Platform features should you recommend? To answer, drag the appropriate features to the correct requirements. Each feature may be used once, more than once, or not at all. You may need to drag the split bar between panes or scroll to view content.
NOTE: Each correct selection is worth one point.

Features

Environment

Security group

SharePoint library

Answer Area

Requirement

Ensure fastest response times for each company location.
Create test and production copies of the data and apps.

Feature

Feature

Feature

- A. Mastered
- B. Not Mastered

Answer: A

Explanation:
Reference:
<https://docs.microsoft.com/en-us/power-platform/admin/environments-overview> <https://docs.microsoft.com/en-us/power-platform/admin/control-user-access>

NEW QUESTION 9

- (Exam Topic 2)
A company needs to create several workflows and applications to help streamline their sales operations. You need to determine which applications are appropriate for given scenarios.
Which applications should you use? To answer, select the appropriate options in the answer area. NOTE: Each correct selection is worth one point.

Scenario

Application

Create no-code workflows that use different systems.

Azure Logic Apps

Power Apps

Power Automate

Dynamics 365 workflows

Build a no-code mobile application.

Azure Logic Apps

Power Apps

Power Automate

Dynamics 365 workflows

Administer your workflow in Microsoft Azure.

Azure Logic Apps

Power Apps

Power Automate

Dynamics 365 workflows

Build a mobile application by using Common Data Service.

Azure Logic Apps

Power Apps

Power Automate

Dynamics 365 workflows

- A. Mastered
- B. Not Mastered

Answer: A

Explanation:
Reference:
<https://docs.microsoft.com/en-us/power-automate/getting-started> <https://docs.microsoft.com/en-us/azure/logic-apps/logic-apps-overview>
<https://powerapps.microsoft.com/pl-pl/blog/business-model-may/>

NEW QUESTION 10

- (Exam Topic 2)
A manufacturing company is evaluating AI Builder. You need to select AI Builder models to address specified requirements.
Which model types should you use? To answer, drag the appropriate model types to the correct requirements. Each model type may be used once, more than once, or not at all. You may need to drag the split bar between panes or scroll to view content.
NOTE: Each correct selection is worth one point.

Model types

prediction

form processing

object detection

Answer Area

Requirement

Identify products without labels or serial numbers.

Identify customers who might not pay their invoices on time.

Model type

model type

model type

- A. Mastered
- B. Not Mastered

Answer: A

Explanation:
Reference:
<https://docs.microsoft.com/en-us/ai-builder/object-detection-model-in-flow> <https://docs.microsoft.com/en-us/ai-builder/prediction-overview>

NEW QUESTION 10
- (Exam Topic 2)
What is a benefit of deploying Microsoft 365 and Dynamics 365 apps in the same tenant?

- A. Use Common Data Services to connect to application data.
- B. You only need to set up groups in Microsoft 365 for permissions to all data.
- C. Users can access both Microsoft 365 and Dynamics 365 by using Single Sign-on (SSO).

Answer: A

NEW QUESTION 11
- (Exam Topic 2)
A company plans to create Power Platform apps that consume industry-standard and proprietary data sources. For each of the following statements, select Yes if the statement is true. Otherwise, select No.
NOTE: Each correct selection is worth one point.

Statement	Yes	No
Custom connector cannot be used if a standard connector for the service is available.	<input type="radio"/>	<input type="radio"/>
Custom connectors are supported in instant flows only.	<input type="radio"/>	<input type="radio"/>
Standard and custom connectors cannot be mixed within the same flow or app.	<input type="radio"/>	<input type="radio"/>

- A. Mastered
- B. Not Mastered

Answer: A

Explanation:
Reference:
<https://docs.microsoft.com/en-us/powerapps/maker/canvas-apps/connections-list>

NEW QUESTION 12
- (Exam Topic 2)
A company uses Microsoft 365 and Dynamics 365 Sales. The company does not have any developers on its staff. You need to explain to the executives the benefits of using Power Platform apps. What are two benefits? Each correct answer presents a complete solution.
NOTE: Each correct selection is worth one point.

- A. Users can send emails from Dynamics 365 Sales to their personal email addresses.
- B. Users can create Power Apps to create apps for different departments.
- C. Users can use Power Automate to share information between Microsoft 365 and Dynamics 365 Sales.
- D. The company must unify all the mobile devices to one vendor.

Answer: BC

NEW QUESTION 14
- (Exam Topic 2)
A company is evaluating Power Platform and has questions about the role that Common Data Service plays in using Power Apps and Power Automate. For each of the following statements, select Yes if the statement is true. Otherwise, select No. NOTE: Each correct selection is worth one point.

Statement	Yes	No
Model-driven apps require a Common Data Service database.	<input type="radio"/>	<input type="radio"/>
A flow instance can only access one Common Data Service database.	<input type="radio"/>	<input type="radio"/>
Canvas apps require a Common Data Service database.	<input type="radio"/>	<input type="radio"/>

- A. Mastered
B. Not Mastered

Answer: A

Explanation:

Statement	Yes	No
Model-driven apps require a Common Data Service database.	<input checked="" type="radio"/>	<input type="radio"/>
A flow instance can only access one Common Data Service database.	<input checked="" type="radio"/>	<input type="radio"/>
Canvas apps require a Common Data Service database.	<input checked="" type="radio"/>	<input type="radio"/>

NEW QUESTION 18

- (Exam Topic 2)

A company plans to use Power BI to visualize data from business systems.

For each of the following statements, select Yes if the statement is true. Otherwise, select No. NOTE: Each correct selection is worth one point.

Statement	Yes	No
You can display data aggregates and raw data in a Power BI report.	<input type="radio"/>	<input type="radio"/>
You can display related data from Dynamics 365 Customer Engagement and Excel in the same Power BI report.	<input type="radio"/>	<input type="radio"/>
You create a Power App to supply data for a Power BI report. You can modify the data directly in the report.	<input type="radio"/>	<input type="radio"/>

- A. Mastered
B. Not Mastered

Answer: A

Explanation:

Box 1: Yes

The following list provides advantages to using aggregations:

Query performance over big data - as users interact with visuals on Power BI reports, DAX queries are submitted to the dataset. Boost query speeds by caching data at the aggregated level, using a fraction of the resources required at the detail level. Unlock big data in a way that would otherwise be impossible.

Box 2: No

You can connect to model-driven apps in Dynamics 365 with Power BI Desktop to create custom reports and dashboards for use with the Power BI service.

You can use similar steps to connect to model-driven apps in Dynamics 365 using Office Excel Power Query by selecting From Other Sources on the Power Query tab in Excel.

Box 3: Yes

Using the PowerApps custom visual, you will be able to pass context aware data to a PowerApps app which updates in real time as you make changes to your report.

Reference:

<https://docs.microsoft.com/en-us/power-bi/desktop-aggregations> <https://docs.microsoft.com/en-us/power-platform/admin/use-power-bi>

<https://powerapps.microsoft.com/sv-se/blog/powerbi-powerapps-visual/>

NEW QUESTION 21

- (Exam Topic 2)

A toy company creates a text classification model in AI Builder to monitor customer feedback for specific key words.

When negative feedback is received for a toy, the company wants to proactively perform engineering reviews for the toy and schedule additional training sessions

for workers who produce the toy.
What are two possible ways to achieve the goal? Each correct answer presents a complete solution. NOTE: Each correct selection is worth one point.

- A. Create a canvas app.
- B. Implement the Virtual Agent.
- C. Build a Microsoft Flow.
- D. Use the Common Data Model.

Answer: AC

Explanation:

A (not D): AI Builder comes with:
A ready-to-use business card reader available in canvas as well as in model-driven apps. Business card reader (Canvas)
Business card reader (Model-driven)
Additional canvas components to leverage your AI Builder form processing or object detection models canvas apps.
C: Use the results from your AI model across Power Platform to create end-to-end solutions that meet your business needs, even if you have no coding skills. For example, create a flow that automates document processing in Power Automate, or an app created with PowerApps that predicts whether a supplier will be out of compliance.
Reference:
<https://docs.microsoft.com/en-us/ai-builder/use-in-powerapps-overview>

NEW QUESTION 25

- (Exam Topic 2)
A company is evaluating ways that they can implement AI Builder.
For which two scenarios can you use AI Builder? Each correct selection presents a complete solution. NOTE: Each correct selection is worth one point.

- A. Send emails to all ai users who subscribe to a service.
- B. Synchronize data from an external database.
- C. Collect data from several data sources and display a dashboard that shows trending data.
- D. Interpret images and perform an action on the image.

Answer: BD

Explanation:

Reference:
<https://powerapps.microsoft.com/en-us/blog/introducing-ai-builder-for-powerplatform/>

NEW QUESTION 30

- (Exam Topic 2)
A company plans to use AI Builder to help improve business performance. You need to determine which AI Models are available for use.
Which three types of models can you use? Each correct answer presents a complete solution. NOTE: Each correct selection is worth one point.

- A. linear regression
- B. binary classification
- C. object detection
- D. anomaly detection
- E. text classification

Answer: BCE

Explanation:

Reference:
<https://carldesouza.com/using-the-ai-builder-in-the-microsoft-power-platform-for-binary-classification/>

NEW QUESTION 34

- (Exam Topic 3)
You create a Power BI dashboard.
Match each option to its function. To answer, drag the appropriate option from the column on the left to its function on the right. Each option may be used once, more than once, or not at all.
NOTE: Each correct match is worth one point.

Products	Answer Area	
	Requirement	Product
Share	Ensure that coworkers can see the dashboard.	
Embed	Display data from Microsoft Excel in the dashboard.	
Get Data	Add a report tile to the dashboard.	
Pin		
Import		

- A. Mastered
- B. Not Mastered

Answer: A

Explanation:

Reference:

<https://docs.microsoft.com/en-us/power-bi/service-set-data-alerts> <https://docs.microsoft.com/en-us/power-bi/service-analyze-in-excel> <https://docs.microsoft.com/en-us/power-bi/service-dashboard-pin-tile-from-report>

NEW QUESTION 35

- (Exam Topic 3)

You are a sales representative. You create a Power BI report to visualize data from a Microsoft Excel workbook.

Users need to be able to view and share the report.

Which two actions should you perform? Each correct answer presents part of the solution. NOTE: Each correct selection is worth one point.

- A. Pin the report to a dashboard.
- B. Export the data.
- C. Publish the dashboard.
- D. Share the dashboard.

Answer: AD

Explanation:

Reference:

<https://docs.microsoft.com/en-us/power-bi/create-reports/service-dashboard-pin-live-tile-from-report> <https://docs.microsoft.com/en-us/power-bi/collaborate-share/service-share-dashboards#limitations-andconsidera>

NEW QUESTION 39

- (Exam Topic 3)

You are a district manager for a large retail organization. You train each store manager to use Power BI to track sales and daily sales targets.

A store manager remembers learning about the Analyze in Excel option but cannot find the option in their Power BI dashboard.

You need to help the user resolve the issue. How should you advise the user?

- A. Install the Power BI Desktop app.
- B. Navigate to the report used by the dashboard.
- C. Select the Spotlight button on the dashboard tile.
- D. Subscribe to the dashboard and follow the email link.

Answer: B

Explanation:

Reference:

<https://docs.microsoft.com/en-us/power-bi/collaborate-share/service-analyze-in-excel>

NEW QUESTION 40

- (Exam Topic 3)

A user is starting to learn about Power Apps.

Which objects should you use? To answer, select the appropriate options in the answer area. NOTE: Each correct selection is worth one point.

A Power Apps app can call a

	▼
connector	
flow	
gateway	
solution	

Actions and triggers are properties of a

	▼
connector	
flow	
gateway	
solution	

- A. Mastered
- B. Not Mastered

Answer: A

Explanation:

Reference:

<https://docs.microsoft.com/en-us/powerapps/powerapps-overview> <https://docs.microsoft.com/en-us/power-automate/getting-started>

NEW QUESTION 42

- (Exam Topic 3)

You are a district manager for a large retail company. You want to provide sales managers with deeper sales insights to ensure that they can make more informed decisions for their stores.

Store managers must be able to view data in near real-time.

You need to create and share a Power BI dashboard that can be used by the store managers.

Which tools can you use? To answer, drag the appropriate reporting types to the correct requirements. Each reporting type may be used once, more than once, or not at all. You may need to drag the split bar between panes or scroll to view content.

Reporting Types

Power BI Desktop only

Power BI Service only

Power BI Desktop or Power BI Service

Answer Area

Requirement

Create Power BI dashboards that contain a single store's sales information.

Share the dashboard with your retail managers.

Reporting type

Reporting type

- A. Mastered
- B. Not Mastered

Answer: A

Explanation:

Reference:

<https://docs.microsoft.com/en-us/power-bi/fundamentals/desktop-getting-started>

NEW QUESTION 47

- (Exam Topic 3)

A company needs to create a series of mobile applications to empower their field engineers to accomplish several tasks with varying degrees of complexity.

Match each option to its answer.

Instructions: To answer, drag the appropriate app type from the column on the left to its definition on the right. Each app type may be used once, more than once, or not at all.

NOTE: Each correct match is worth one point.

App types

model-driven

dashboard

dataset

canvas

Answer Area

Definition

Quickly create apps for very complex business processes with very little or no code.

Create simple apps with a highly customizable user interface layouts.

App type

App type

- A. Mastered
- B. Not Mastered

Answer: A

Explanation:

Box 1: canvas

Both model-driven and canvas apps allow you to easily build business apps. They both share access to the Common Data Service providing standard and custom entities. Canvas apps start with your user experience, crafting a highly tailored interface with the power of a blank canvas and connecting it to 200 data sources. Canvas apps can be built for web, mobile, and tablet applications. Model-driven apps start with your data model – building up from the shape of your core business data and processes in the Common Data Service to model forms, views, and other components. Model-driven apps automatically generate great UI that is responsive across devices.

Box 2: model-driven Reference:

<https://powerapps.microsoft.com/sv-se/blog/introducing-model-driven-apps/>

NEW QUESTION 49

- (Exam Topic 3)

You need to display sales orders greater than a specific threshold in a Power BI report. What should you use?

- A. Common Data Service
- B. connector
- C. Power Query
- D. filter

Answer: D

NEW QUESTION 54

- (Exam Topic 3)

A recent update has been made to a canvas app. The update has caused a negative impact to users. You need to roll back the app to a previous version. What should you do?

- A. Restore the previous version of the app.
- B. Uninstall the app for all users and reinstall by using the previous versions' package.
- C. Deactivate the live app, import the previous version of the app, and then activate the app.
- D. Delete the app and create a new app based on the previous version.

Answer: A

Explanation:

Restore a canvas app to a previous version in PowerApps. Restore an app from your account

- > Open powerapps.com, and then click or tap Apps in the left navigation bar.
- > Near the right edge, click or tap the info icon for the app that you want to restore.
- > Click or tap the Versions tab, and then click or tap Restore for the version that you want to restore.
- > In the confirmation dialog box, click or tap Restore.

A new version is added to your list. Reference:
<https://docs.microsoft.com/en-us/powerapps/maker/canvas-apps/restore-an-app>

NEW QUESTION 56

- (Exam Topic 3)

A company plans to implement Power BI to analyze retail operations data. You need to recommend solutions for the company. Which Power BI components should the company use? To answer, drag the appropriate Power BI components to the correct requirements. Each Power BI component may be used once, more than once, or not at all. You may need to drag the split bar between panes or scroll to view content.
NOTE: Each correct selection is worth one point.

Power BI components	Answer Area	
	Requirement	Power BI component
reports	Allow users to set and receive alerts when data changes beyond specified limits.	<div></div>
workspaces		
dashboards	View and filter data and export data to Microsoft Excel for further manipulation and analysis.	<div></div>
dataset		

- A. Mastered
- B. Not Mastered

Answer: A

Explanation:

Requirement	Power BI component
Allow users to set and receive alerts when data changes beyond specified limits.	<div>workspaces</div>
View and filter data and export data to Microsoft Excel for further manipulation and analysis.	<div>dataset</div>

NEW QUESTION 60

- (Exam Topic 3)

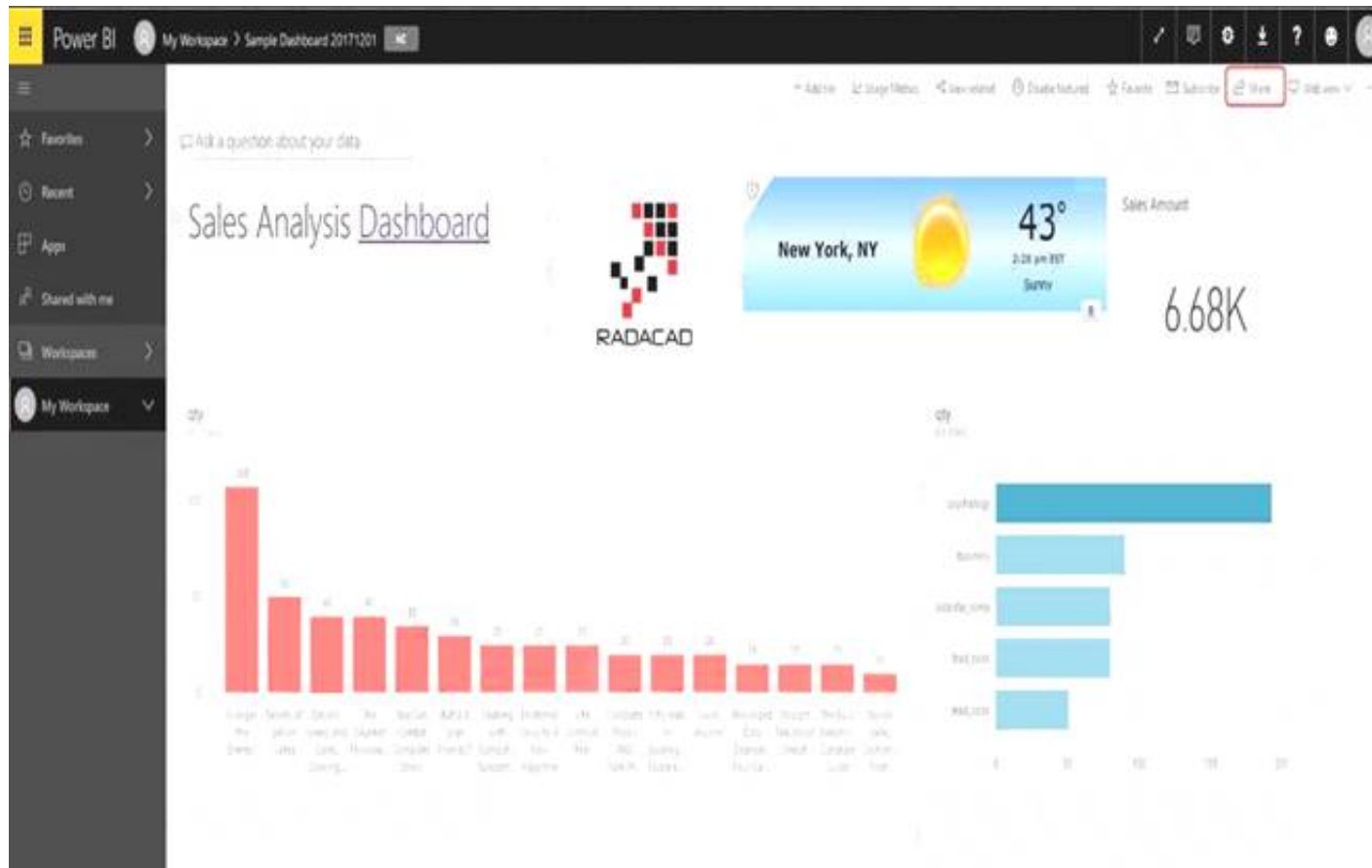
You create a Power BI dashboard that displays data from Dynamics 365 Customer Engagement. You need to share the Power BI dashboard with coworkers. What are three possible ways to achieve the goal? Each correct answer presents a complete solution. NOTE: Each correct selection is worth one point.

- A. Create a Power BI workspace and grant coworkers permissions.
- B. Publish the dashboard as an app to your coworkers.
- C. Export the data into Common Data Service for others to manipulate in Power BI.
- D. Export the data to Microsoft Excel for coworkers to import and view in Power BI.
- E. Embed reports in your company's internal web portal.

Answer: ABE

Explanation:

A: Basic Sharing for Dashboards and Reports through a workspace is the most common way of sharing the Power BI content. Basic Sharing is very simple and easy to use method. You can simply click on the Share button in the dashboard or report, and then share it with other users.



B: Apps are great sharing method for multiple environment, and best way of sharing for users in production environment.

Power BI App is the solution for multiple environment approach. With Power BI App, your development environment (workspace), and user environment (App) are isolated from each other.

Note: If you are using SharePoint online as a portal for document management and some other reasons already, then consider using Embed in SharePoint Online feature of Power BI reports. This method is secure and you can share the report only with Power BI users you want.

E: Sometimes, you don't need a secure way of sharing, you may search for an easy and free way of sharing, and your content is not confidential or sensitive.

Publish to web is your friend in such situation. This is the only free way of sharing in Power BI, but be aware that this method is not secure.

Publish to web method, gives you an embed code, which you can use in any web pages to embed the Power BI report in it

Reference:

<https://radacad.com/power-bi-sharing-methods-comparison-all-in-one-review>

NEW QUESTION 62

- (Exam Topic 3)

Your company has an on premises Microsoft SQL Server database that contains legacy sales data. You must display information from the database in a new Power Apps app.

You need to establish a secure connection between the database and the app. What should you use?

- A. Data source
- B. App
- C. Gateway
- D. Flow

Answer: C

Explanation:

For an on-premises database, identify a data gateway that was shared with you (or create one).

Specify Connect using on-premises data gateway, type or paste the server name, the database name, the user name, and the password for the database that you want to use, and specify the authentication type and the gateway.

Reference:

<https://docs.microsoft.com/en-us/powerapps/maker/canvas-apps/connections/connection-azure-sqldatabase>

NEW QUESTION 64

- (Exam Topic 4)

A company publishes e-books for independent authors.

The company wants to implement a Power Apps portal solution to make announcements about upcoming books to the general public.

You need to recommend features for the company.

Which features should you use? To answer, select the appropriate options in the answer area. NOTE: Each correct selection is worth one point.

Requirement	Options
Ensure that book authors can securely access their data.	<input checked="" type="checkbox"/> Authenticate external users. <input checked="" type="checkbox"/> Access data in Common Data Service. <input checked="" type="checkbox"/> Use page templates. <input checked="" type="checkbox"/> Browse content anonymously.
Ensure consistent page design across the website.	<input checked="" type="checkbox"/> Authenticate external users. <input checked="" type="checkbox"/> Access data in Common Data Service. <input checked="" type="checkbox"/> Use page templates. <input checked="" type="checkbox"/> Browse content anonymously.
Ensure that the public can access announcements about upcoming	<input checked="" type="checkbox"/> Authenticate external users. <input checked="" type="checkbox"/> Use page templates. <input checked="" type="checkbox"/> Browse content anonymously.

- A. Mastered
- B. Not Mastered

Answer: A

Explanation:

Reference:

<https://www.onactuate.com/upgrades/what-is-the-new-powerapps-portal/> <https://docs.microsoft.com/en-us/powerapps/maker/portals/configure/page-templates>

NEW QUESTION 68

- (Exam Topic 4)

You create a Power App portal.

When a user signs into the portal the following error displays: user not found You confirm that the user's sign in information is correct.

You need to determine the cause of the error. What should you do?

- A. Disable custom error messages.
- B. Create a custom error message.
- C. Enable diagnostic tools in Lifecycle Services.
- D. Enable Maintenance mode.

Answer: C

Explanation:

Reference:

<https://docs.microsoft.com/en-us/dynamics365/fin-ops-core/dev-itpro/lifecycle-services/monitoring-diagnostics> <https://docs.microsoft.com/en-us/dynamics365/fin-ops-core/dev-itpro/lifecycle-services/user-logins>

NEW QUESTION 70

- (Exam Topic 4)

A company is creating a canvas app to display data from a legacy system that is located on the company's internal network.

You need to connect to the data. What should you use?

- A. custom connector
- B. content pack
- C. data gateway
- D. Power Automate

Answer: C

Explanation:

<https://docs.microsoft.com/en-us/powerapps/maker/canvas-apps/gateway-management>

NEW QUESTION 74

- (Exam Topic 4)

A company plans to build new apps for the business to allow employees to work more efficiently. You need to recommend the appropriate types of Power Apps to meet the company's requirements.

To answer, drag the appropriate app types to the correct requirements. Each app type may be used once, more than once, or not at all. You may need to drag the split bar between panes or scroll to view content.

NOTE: Each correct selection is worth one point.

App types

model-driven

portals

canvas

AI Builder

Answer Area

Requirement	App type
Build mobile apps that use cameras and location data.	
Give external users secure access to your data.	

- A. Mastered
- B. Not Mastered

Answer: A

Explanation:

Reference:

<https://docs.microsoft.com/en-us/powerapps/maker/canvas-apps/getting-started> <https://docs.microsoft.com/en-us/powerapps/maker/portals/overview>

NEW QUESTION 79

- (Exam Topic 4)

A user is trying to understand the differences between the various ways apps can be built by using Power Apps.

For each of the following statements, select Yes if the statement is true. Otherwise, select No. NOTE: Each correct selection is worth one point.

Statement	Yes	No
You can embed canvas apps in model-driven apps.	<input type="radio"/>	<input type="radio"/>
A Power Apps portal can use only one data source.	<input type="radio"/>	<input type="radio"/>
You must use Power BI to create reports in model-driven apps.	<input type="radio"/>	<input type="radio"/>

- A. Mastered
- B. Not Mastered

Answer: A

Explanation:

Box 1: Yes
You can create a canvas app and then embed that within a model driven app. Box 2: No
With the capability to build a portal in PowerApps, you can create a website for external and internal users enabling them to interact with data stored in Common Data Service.
Note: Common Data Service lets you securely store and manage data that's used by business applications. Data within Common Data Service is stored within a set of entities. An entity is a set of records used to store data, similar to how a table stores data within a database. Common Data Service includes a base set of standard entities that cover typical scenarios, but you can also create custom entities specific to your organization and populate them with data using Power Query. App makers can then use PowerApps to build rich applications using this data.
Box 3: Yes
To get started building a report you'll need the latest version of Power BI Desktop and a PowerApps environment with the latest version of the Common Data Service.
Reference:
<https://carldesouza.com/how-to-embed-a-canvas-app-in-a-model-driven-app-in-powerapps/> <https://docs.microsoft.com/en-us/powerapps/maker/portals/create-portal> <https://docs.microsoft.com/en-us/powerapps/maker/common-data-service/data-platform-intro>

NEW QUESTION 80

- (Exam Topic 4)
A company has a Power Apps app that is used by most employees. The company is expanding to other countries/regions. You need to recommend a solution to translate text generated within the Power Apps in near real-time. What should you recommend?

- A. Microsoft Azure Synapse Analytics
- B. Microsoft Azure Cognitive Services
- C. Common Data Service connector
- D. Power BI

Answer: B

Explanation:

Reference:
https://docs.microsoft.com/en-gb/azure/cognitive-services/welcome? ocid=AID2339762_TWITTER_oo_spl100000827964250
<https://powerapps.microsoft.com/en-us/blog/cognitive-services-with-powerapps-using-custom-connectors/>

NEW QUESTION 83

- (Exam Topic 4)
A company is building a model-driven app. You need to create and configure the objects needed for the app. Which component categories should you use? To answer, drag the appropriate component categories to the correct objects. Each component category may be used once, more than once, or not at all. You may need to drag the split bar between panes or scroll to view content. NOTE: Each correct selection is worth one point.

Component categories

UI

Data

Logic

Visulaization

Answer Area

Object

Relationship

Form

Business rule

View

Component category

- A. Mastered
- B. Not Mastered

Answer: A

Explanation:

Reference:

<https://docs.microsoft.com/en-us/powerapps/maker/model-driven-apps/model-driven-app-components>

NEW QUESTION 87

- (Exam Topic 4)

You create a canvas app that allows contractors to submit time they work against a project.

Contractors must be able to use the canvas app to enter time. Contractors must not be able to perform any other actions in the app.

You need to configure permissions for the contractors. Which type of permissions should you use?

- A. application-level
- B. task-level
- C. record-level
- D. field-level

Answer: D

Explanation:

Field-level security feature to allow more granular control of security at the field level. Reference:

<https://docs.microsoft.com/en-us/power-platform/admin/security-roles-privileges> <https://docs.microsoft.com/en-us/power-platform/admin/wp-security-cds>

NEW QUESTION 88

- (Exam Topic 4)

A company's customer-facing applications must comply with Global Data Protection Regulations (GDPR) regulations.

You need to recommend actions to help ensure GDPR compliance.

Which two features should the company use? Each correct answer presents part of the solution. NOTE: Each correct selection is worth one point.

- A. Prompt a user for consent to use their personal data and record the date consented.
- B. Automatically deactivate a user who has not used the portal in six months.
- C. Force a user to update security questions after a specific amount of time.
- D. Block users who are identified as minors.

Answer: AD

Explanation:

Reference: https://en.wikipedia.org/wiki/General_Data_Protection_Regulation

NEW QUESTION 91

- (Exam Topic 4)

A company is considering implementing Power Platform.

For which three scenarios should you consider implementing Power Apps portals? Each correct answer presents a complete solution.

NOTE: Each correct selection is worth one point.

- A. a customer support website that includes knowledge search and support for document uploads
- B. a public website that supports multi-lingual communities with forums and blogs support
- C. an online store with e-commerce requirements including payment processing
- D. a secure website for vendors accessing data stored in Common Data Service
- E. an internal website for employees to access selected data from Dynamics 365 Finance

Answer: ABE

Explanation:

Reference:

<https://docs.microsoft.com/en-us/powerapps/maker/portals/portal-templates>

NEW QUESTION 92

- (Exam Topic 4)

A company plans to create a canvas app that connects to three databases with different proprietary database formats. What is the minimum number of connectors required?

- A. 1
- B. 2
- C. 3

Answer: B

NEW QUESTION 93

- (Exam Topic 4)

You create a canvas app by using the Generate from data feature. The app connects to a Microsoft SharePoint list.

For each of the following statements, select Yes if the statement is true. Otherwise, select No. NOTE: Each correct selection is worth one point.

Statement	Yes	No
A screen is generated that contains a browsable list of SharePoint list items.	<input type="radio"/>	<input type="radio"/>
A screen is generated that allows users to update SharePoint list items.	<input type="radio"/>	<input type="radio"/>

- A. Mastered
- B. Not Mastered

Answer: A

Explanation:
Reference:
<https://docs.microsoft.com/en-us/powerapps/maker/canvas-apps/app-from-sharepoint>

NEW QUESTION 96

- (Exam Topic 5)
A software company plans to use Power Automate.
For each of the following statements, select Yes if the statement is true. Otherwise, select No. NOTE: Each correct selection is worth one point.

Statement	Yes	No
You must certify custom connectors before users in other departments within your organization can use the connectors.	<input type="radio"/>	<input type="radio"/>
You must use Microsoft Azure API apps to create a public custom connector.	<input type="radio"/>	<input type="radio"/>

- A. Mastered
- B. Not Mastered

Answer: A

Explanation:
Reference:
<https://docs.microsoft.com/en-us/connectors/custom-connectors/share>

NEW QUESTION 99

- (Exam Topic 5)
A company plans to implement Power Apps.
For each of the following statements, select Yes if the statement is true. Otherwise, select No. NOTE: Each correct selection is worth one point.

Answer Area		
Statement	Yes	No
Building Power Apps apps requires proficiency in JavaScript programming.	<input type="radio"/>	<input type="radio"/>
You must select one of the app templates to create an app.	<input type="radio"/>	<input type="radio"/>

- A. Mastered
- B. Not Mastered

Answer: A

Explanation:
Reference:
<https://docs.microsoft.com/en-us/powerapps/maker/>

NEW QUESTION 102

- (Exam Topic 5)
A company uses a third party application and an approval process via email. At the end of the month, the IT department enters the data into Microsoft Excel to create pivot charts.
The Excel pivot charts must use the same data source as Dynamics 365 Field Service to generate charts and reports.
You need to recommend a solution.

What should you recommend? To answer, select the appropriate configuration in the answer area. NOTE: Each correct selection is worth one point.

Requirement	Solution
Create an approval workflow.	<div><div></div><div>Dynamics 365 Workflow Notifications Microsoft Outlook Integration AI Builder Microsoft Flow</div></div>
Connect to report data.	<div><div></div><div>Common Data Service and Power BI Third-party from AppSource Custom Code flat file integration Dynamics 365 Field Service</div></div>

- A. Mastered
- B. Not Mastered

Answer: A

Explanation:

Box 1: Dynamics 365 Workflow notifications

You can configure the system to send email messages to users when workflow-related events occur. Note:

- > Go to Navigation pane > Modules > System administration > Users > Users.
- > In the list, find and select the desired record.
- > On the Action pane, click User options.
- > Click the Workflow tab. Make sure that the Notifications section is expanded. In the Notifications section, you can specify how you want the user to be notified about workflow-related events.

Box 2: Dynamics 365 Field Service

Supply Chain Management enables synchronization of business processes between Dynamics 365 Supply Chain Management and Dynamics 365 Field Service. The integration scenarios are configured by using extensible Data integrator templates and Common Data Service to enable the synchronization of business processes. Standard templates can be used to create custom integration projects, where additional standard and custom fields and entities can be mapped to adjust the integration and meet specific business needs.

Reference:

<https://docs.microsoft.com/en-us/dynamics365/fin-ops-core/fin-ops/organization-administration/tasks/users-rece>

NEW QUESTION 103

- (Exam Topic 5)

You build a flow using a template. You want to add support for additional business scenarios. You need to ensure that the new workflow does not break existing functionality.

Which flow editing utilities should you use? To answer, drag the appropriate tools to the correct requirements. Each tool may be used once, more than once, or not at all You may need to drag the split bar between panes or scroll to view content.

NOTE: Each correct selection is worth one point.

Tools	Requirement	Tool
Test	Check the new flow for any errors or warnings.	Tool
Flow Checker	Run the flow using previously processed data.	Tool
	Monitor the flow as it is running.	Tool

- A. Mastered
- B. Not Mastered

Answer: A

Explanation:

Box 1: Flow Checker

The Flow checker feature will promote higher quality flows by ensuring you follow best practices. By running the checker, you will be able to get answers to questions like: which areas of my flow implementation pose a performance or reliability risk?

For each issue identified, the Flow checker points to specific occurrences within the flow where improvements may be required. And more importantly, you learn how to implement these improvements by following detailed guidance.

Box 2: Test

Box 3: Test Reference:

<https://flow.microsoft.com/en-us/blog/flow-checker-four-connectors/> <https://docs.microsoft.com/en-us/power-automate/modern-approvals>

NEW QUESTION 105

- (Exam Topic 5)

A company builds and sells residential apartments. The company uses Dynamics 365 Sales to manage sales opportunities.

Management must receive notifications on their mobile devices when sales opportunities are created. You need to select recommend Power Platform components to address the requirements.

Which two components should you recommend? Each correct answer presents part of the solution. NOTE: Each selection is worth one point.

- A. Common Data Service connector
- B. Power BI
- C. Power Automate
- D. AI Builder

Answer: CD

Explanation:

Reference:

<https://www.powerobjects.com/blog/2019/04/05/flow-approval-process/>

NEW QUESTION 106

- (Exam Topic 5)

A company uses Dynamics 365 Customer Service. The company uses a manual process to manage call escalations.

You must use Power Automate to automate the process for routing escalated calls. You need to create the flow.

Which type of connector should you use?

- A. Microsoft Excel
- B. Common Data Service
- C. Office 365 Users

Answer: B

NEW QUESTION 110

- (Exam Topic 5)

A project deadline is approaching. The project manager reports that there are still a number of critical tasks that are not complete.

You need to implement Power Automate to help streamline processes.

Which types of flows should you use? To answer, drag the appropriate flow types to the correct requirement. Each flow type may be used once, more than once, or not at all. You may need to drag the split bar between panes or scroll to view content.

NOTE: Each correct selection is worth one point.

Flow types	Answer Area	
	Requirement	Flow type
automated	Ensure that all of the steps for completing tasks are consistently followed by all team members.	<input type="text"/>
instant	Allow users to send an email to the project lead whenever a task is completed.	<input type="text"/>
scheduled	Automatically send a list of completed tasks at the end of each week.	<input type="text"/>
business process		

- A. Mastered
- B. Not Mastered

Answer: A

Explanation:

Reference:

<https://docs.microsoft.com/en-us/power-automate/business-process-flows-overview> <https://docs.microsoft.com/en-us/power-automate/get-started-logic-flow>

<https://docs.microsoft.com/en-us/power-automate/run-scheduled-tasks>

NEW QUESTION 115

- (Exam Topic 5)

This question requires that you evaluate the BOLD text to determine if it is correct.

A company requires that service representatives schedule customer visits every six months. Each service representative is required to enter a scheduled task for the next checkup as they are leaving a client site. A service representative wants to automate task entry by creating a business process flow that can be initiated from the service call screen on a phone.

Review the underlined text. If it makes the statement correct, select "No change is needed." If the statement is incorrect, select the answer choice that makes the statement correct.

- A. No change is needed.
- B. a scheduled
- C. an instant
- D. an action

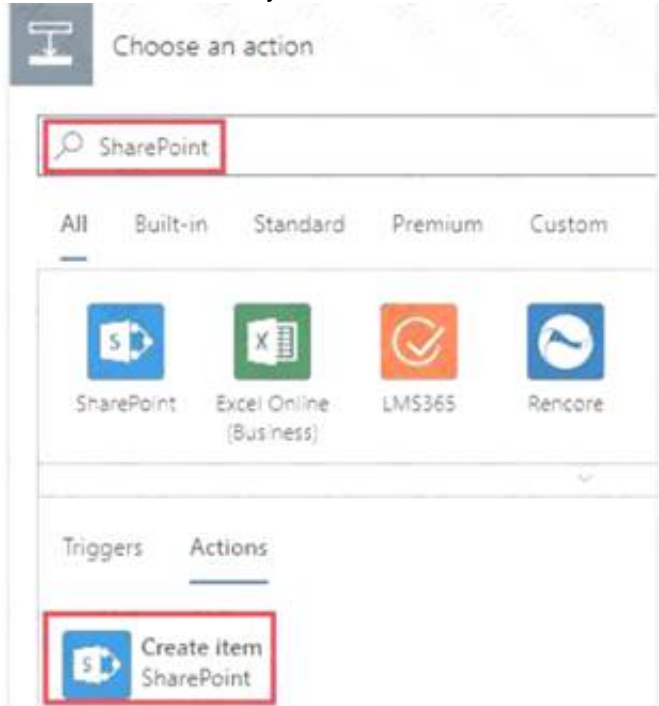
Answer: D

Explanation:

Note: Create a flow (see step 6 below)

- * 1. Sign in to PowerApps.
- * 2. In the left navigation bar, select Business logic, and then select Flows.
- * 3. In the upper-left corner of the My Flows page, select New, and then select Create from blank.
- * 4. Option to create a flow without using a template

- Near the bottom of the page that appears, select Search hundreds of connections and triggers.
- * 5. In the search box, type PowerApps, and then select the PowerApps icon.
 - * 6. Create a PowerApps trigger
 - * 7. On the next page, select the PowerApps icon again, and then select New step.
 - * 8. In the box that says Search connectors and actions, specify an action for your flow, as in this example:



Reference:
<https://docs.microsoft.com/en-us/powerapps/maker/canvas-apps/using-logic-flows>

NEW QUESTION 117

- (Exam Topic 5)
A company uses Microsoft Flow.
Each time a work order is created, a service manager must review and approve the work order before a worker is dispatched.
You need to create a flow to enforce the process. What should you create?

- A. plug-in
- B. approval flow
- C. business rule
- D. team flow
- E. instant flow

Answer: B

Explanation:
With Power Automate, you can manage the approval of documents or processes across several services, including SharePoint, Dynamics 365, Salesforce, OneDrive for Business, Zendesk, or WordPress. Reference:
<https://docs.microsoft.com/en-us/power-automate/modern-approvals>

NEW QUESTION 118

- (Exam Topic 5)
For which scenarios can you use Power Automate?
For each of the following statements, select Yes if the statement is true. Otherwise, select No. NOTE: Each correct selection is worth one point.

Statement	Yes	No
Notify team members when a response is recorded in a form in Microsoft Forms.	<input type="radio"/>	<input type="radio"/>
When email is received, save email attachments to OneDrive for Business.	<input type="radio"/>	<input type="radio"/>
Receive notifications when negative comments about the company are posted on Twitter.	<input type="radio"/>	<input type="radio"/>

- A. Mastered
- B. Not Mastered

Answer: A

Explanation:
Reference:
<https://flow.microsoft.com/en-us/galleries/public/templates/b923bbd04bda11e78896d10a96d3fac3/notify-the-tea> <https://flow.microsoft.com/en-us/galleries/public/templates/65ceb79430ef4956a0855fbe09249cdf/save-office-36> <https://flow.microsoft.com/en-us/blog/get-notified-of-negative-posts/>

NEW QUESTION 123

- (Exam Topic 5)

A company uses Power Automate.
Which three items can trigger flows? Each correct answer presents a complete solution. NOTE: Each correct selection is worth one point.

- A. Lifecycle Services
- B. Microsoft 365 Admin center
- C. Common Data Service
- D. Microsoft Outlook 365
- E. Microsoft Windows Desktop

Answer: ACD

Explanation:
<https://docs.microsoft.com/en-us/power-automate/email-triggers> <https://docs.microsoft.com/en-us/power-automate/connection-cds>
<https://dynamics365.wordpress.com/category/powerapps/>

NEW QUESTION 125

- (Exam Topic 5)
Users within a company use Flow for personal productivity.
Users often overwrite their working flows by editing the definitions and are unable to undo changes after saving a flow.
You need to ensure that users can revert a flow to the current state.
Which two options can you use? Each correct answer presents a complete solution. NOTE: Each correct selection is worth one point.

- A. Export
- B. Rename
- C. Save As
- D. Share

Answer: AC

Explanation:
A: You can export a flow as a package and import it into a different environment, or use it to restore the in the same environment at a later point in time.
C: The ability to make a copy of your flow is often useful when you want to create a flow similar to something you've already created. Or, if you want to maintain a draft of your working flow as you work on adding more functionality.
Here's how:
Go to your My flows page. Click on the More (...) menu item next to the flow that you want to create a copy of. Click on the Save As command.
Reference:
<https://flow.microsoft.com/en-us/blog/import-export-bap-packages/> <https://flow.microsoft.com/en-us/blog/make-a-copy/>

NEW QUESTION 127

- (Exam Topic 5)
A company is using Power Automation to automate business processes. You need to recommend triggers for Instant flows.
What trigger types should you recommend? To answer, select the appropriate options in the answer area. NOTE: Each correct selection is worth one point.

Requirement	Trigger type
Run a flow when the user presses a button in a canvas app.	<div><div></div><div>PowerApps for a selected row manually trigger a flow for a selected file (OneDrive for a Business)</div></div>
Run a flow when user presses a button in the mobile Flow app.	<div><div></div><div>PowerApps for a selected row manually trigger a flow for a selected file (SharePoint)</div></div>

- A. Mastered
- B. Not Mastered

Answer: A

Explanation:
Reference:
<https://docs.microsoft.com/en-us/powerapps/maker/canvas-apps/using-logic-flows> <https://www.o365dude.com/2017/07/15/flow-buttons-the-hidden-gem-of-microsoft-flow/>

NEW QUESTION 132

- (Exam Topic 5)
A company performs on-site inspections and services for air industrial equipment.
Field technicians must perform a series of maintenance checks every time they visit a customer site. Every technician performs maintenance tasks in a different order. Some technicians miss steps.
You need to ensure that all technicians perform the same steps in the same order. What should you use?

- A. Business process flow

- B. AI Builder
- C. Business rule
- D. Virtual Agent

Answer: A

Explanation:

You can help ensure that people enter data consistently and follow the same steps every time they work with a customer by creating a business process flow. For example, you might want to create a business process flow to have everyone handle customer service requests the same way, or to require that people get approval for an invoice before submitting an order. Business process flows use the same underlying technology as other processes, but the capabilities that they provide are very different from other features that use processes.

Reference:

<https://docs.microsoft.com/en-us/power-automate/business-process-flows-overview>

NEW QUESTION 137

- (Exam Topic 5)

A company has a website. The website includes a form that allows the company to collect information about leads.

You need to set up an automated workflow to create leads in Dynamics 365 Sales when leads are created on the company's custom website.

What should you create?

- A. Task Flow
- B. Power Automate flow
- C. Dynamics 365 workflow
- D. Business Process Flow

Answer: B

Explanation:

Reference:

<https://trellispoint.com/create-crm-leads-using-microsoft-flow/>

NEW QUESTION 142

- (Exam Topic 6)

You are planning to allow members of your team to test your chatbot. You must ensure this is done in a secure way.

A team member named User1 must test the chatbot. You need to ensure that User1 can complete testing. What should you do?

- A. Sign in to the authoring environment as the chatbot author.
- B. Sign in to Microsoft Azure DevOps as the chatbot author.
- C. Sign in to Microsoft Azure DevOps as User1.
- D. Sign in to the authoring environment as User1.

Answer: A

NEW QUESTION 143

- (Exam Topic 6)

You are creating a model-driven app.

For each of the following statements, select Yes if the statement is true. Otherwise, select No.

NOTE: Each correct selection is worth one point.

Statements	Yes	No
To add entities to an app, entities are dragged onto the app canvas from the components area.	<input type="radio"/>	<input type="radio"/>
View definition is created in the component area of the app designer.	<input type="radio"/>	<input type="radio"/>
You must save, validate, and publish your app for others to see the changes.	<input type="radio"/>	<input type="radio"/>

- A. Mastered
- B. Not Mastered

Answer: A

Explanation:

Reference:

<https://docs.microsoft.com/en-us/powerapps/maker/model-driven-apps/build-first-model-driven-app> <https://docs.microsoft.com/en-us/powerapps/maker/model-driven-apps/validate-app>

NEW QUESTION 145

- (Exam Topic 6)

A company uses Dynamics 365 Supply Chain Management.

When a sales order is created for one of the customers that a specific user manages, a Microsoft Outlook task must be created to remind the user to perform any follow up activities that are required.

You need to implement the functionality to create Outlook tasks. Which feature should you use?

- A. Power Automate

- B. AI Builder
- C. Power BI
- D. Business Events
- E. Common Data Service

Answer: A

NEW QUESTION 150

- (Exam Topic 6)

You need to implement Microsoft Business Applications along with the Microsoft Power Platform.
Which three Microsoft products are pan of the Power Platform? Each correct answer presents a complete solution.
NOTE: Each correct selection is worth one point.

- A. Power Apps
- B. Azure Active Directory
- C. Power Automate
- D. Azure Machine learning
- E. Power BI

Answer: ACE

NEW QUESTION 152

- (Exam Topic 6)

A company is evaluating ways to connect Power Platform apps to external services to perform complex activities. For each of the following statements, select Yes if the statement is true. Otherwise, select No. NOTE: Each correct selection is worth one point.

Answer Area

Statement	Yes	No
You can create a canvas app that scans and parses documents using Azure Cognitive Services and then adds the appropriate information to Dynamics 365 Sales.	<input type="radio"/>	<input type="radio"/>
You can create a canvas app that uses Azure Cognitive Services to read incident records and identify tickets that need to be escalated based on sentiment score.	<input type="radio"/>	<input type="radio"/>

- A. Mastered
- B. Not Mastered

Answer: A

Explanation:
Yes Yes

NEW QUESTION 153

- (Exam Topic 6)

You are creating a Power Automate flow.
You need to retrieve data from several sources deluding Microsoft Excel, Azure Data lake, and GitHub.
What should you use? To answer, drag the appropriate components to the correct data sources. Each component may be used once, more than once, or not at all.
You may need to drag the split bar between panes or scroll to view content.
NOTE: Each correct selection Is worth one point

Components	Answer Area	
	Data source	Component
Connector	Microsoft Excel	
Expression	Azure Data Lake	
Formula	GitHub	

- A. Mastered
- B. Not Mastered

Answer: A

Explanation:

Components	Answer Area	
	Data source	Component
Connector	Microsoft Excel	Formula
Expression	Azure Data Lake	Connector
Formula	GitHub	Expression

NEW QUESTION 156

- (Exam Topic 6)

You want to create a Power Apps app that allows you to define a custom Sitemap. What should you do? To answer, select the appropriate options in the answer area.

Navigate to the Power Apps portal and create

a canvas app.

a model-driven app.

a portal app.

an app by using a template.

- A. Mastered
- B. Not Mastered

Answer: A

Explanation:

Reference:

<https://docs.microsoft.com/en-us/powerapps/powerapps-overview>

NEW QUESTION 160

- (Exam Topic 6)

A company uses Microsoft 365, Power Platform, and Dynamics 365. You do not assign permissions to any licensed users.

Users are able to create and edit Power Apps canvas apps.

In which environment are users creating and editing the apps?

- A. Production
- B. Test
- C. Sandbox

Answer: B

NEW QUESTION 165

- (Exam Topic 6)

You are creating a model-driven app. You need to add forms to the app.

Which form types should you use> To answer, select the appropriate options in the answer area.

NOTE: Each correct selection is worth one point.

Requirement	Form type
a compact form for mobile devices	<div><div></div><div><div>Card</div><div>Quick Create</div><div>Quick View</div></div></div>
a basic form for data entry	<div><div></div><div><div>Main</div><div>Quick Create</div><div>Quick View</div></div></div>
a compact form for use in web clients to edit records	<div><div></div><div><div>Advanced Find Views</div><div>Associated Views</div><div>Lookup Views</div><div>Public Views</div></div></div>

- A. Mastered
- B. Not Mastered

Answer: A

Explanation:

Requirement	Form type
a compact form for mobile devices	<div>Card</div> <div>Quick Create</div> <div>Quick View</div>
a basic form for data entry	<div>Main</div> <div>Quick Create</div> <div>Quick View</div>
a compact form for use in web clients to edit records	<div>Advanced Find Views</div> <div>Associated Views</div> <div>Lookup Views</div> <div>Public Views</div>

NEW QUESTION 166

- (Exam Topic 6)

A company plans to build solutions by using Power Platform technologies.

For each of the following statements, select Yes if the statement is true. Otherwise, select No. NOTE: Each correct selection is worth one point.

Statement	Yes	No
Power Virtual Agents chat data is saved unless it is deleted by the customer after a chat session.	<input type="radio"/>	<input type="radio"/>
Power Automate flows operate with administrative privileges at all times.	<input type="radio"/>	<input type="radio"/>

- A. Mastered
- B. Not Mastered

Answer: A

Explanation:

Statement	Yes	No
Power Virtual Agents chat data is saved unless it is deleted by the customer after a chat session.	<input checked="" type="radio"/>	<input type="radio"/>
Power Automate flows operate with administrative privileges at all times.	<input type="radio"/>	<input checked="" type="radio"/>

NEW QUESTION 169

- (Exam Topic 6)

You create a Power Virtual Agents chatbot for use with Microsoft Teams. You are testing the chatbot. Testers report the following issues:

- > Changes that you make to the chatbot are not seen by testers.
- > When users enter the word refund the chatbot must ask the user the product for which they would like a refund. The chatbot does not ask the user for product information.

You need to determine what needs to be done to fix the issues.

What should you do? To answer, select the appropriate options in the answer area.

NOTE: Each correct selection is worth one point.

Missing changes	<div>Create a new chatbot.</div> <div>Publish the chatbot.</div> <div>Save the topic.</div> <div>Share the chatbot.</div>
Refund responses are not working as expected.	<div>Change security.</div> <div>Create a refund topic.</div> <div>Create a refund chatbot.</div>

- A. Mastered
- B. Not Mastered

Answer: A

Explanation:

Reference:
https://docs.microsoft.com/en-us/power-virtual-agents/publication-fundamentals-publish-channels

NEW QUESTION 174

- (Exam Topic 6)

You need to explain the major components of the Common Data Model (CDM) and their functions. Match each term to its definition.

Instructions: To answer, drag the appropriate term from the column on the left to its definition on the right. Each term may be used once, more than once, or not at all. Each correct match is worth one point.

NOTE: Each correct selection is worth one point.

Tools

Entities

Common Data Service

Workflows

Data connectors

Common Data Model

Answer Area

Purpose

Helps jumpstart application development by leveraging business logic, security, and integrations

A set of records used to store data

Tool

- A. Mastered
B. Not Mastered

Answer: A

Explanation:

Tools

Entities

Common Data Service

Workflows

Data connectors

Common Data Model

Answer Area

Purpose

Helps jumpstart application development by leveraging business logic, security, and integrations

A set of records used to store data

Tool

Common Data Service

Entities

NEW QUESTION 178

- (Exam Topic 6)

A company plans to use Power Automate to automate tasks.

Match each flow type to its description lo answer, drag the appropriate now type from the column on the left to its description on the right. Each option may be used once, more than once, or not at all.

NOTE: Each correct match is worth one point.

Flow types

automated

business process

scheduled

instant

Answer Area

Description

a flow that runs after it is triggered by an event

a flow that guides a user through a set of tasks

a flow that runs after a specified number of days

a flow that allows you to start tasks on demand

Flow type

Flow type

Flow type

Flow type

- A. Mastered
B. Not Mastered

Answer: A

Explanation:

low types

automated

business process

scheduled

instant

Answer Area

Description

a flow that runs after it is triggered by an event

a flow that guides a user through a set of tasks

a flow that runs after a specified number of days

a flow that allows you to start tasks on demand

Flow type

automated

business process

scheduled

instant

NEW QUESTION 183

- (Exam Topic 6)

A company wants users to start using Power Automate to improve personal productivity. You need to create a flow.

Which two elements must you include? Each correct answer presents part of the solution. NOTE: Each correct selection is worth one point.

- A. condition
B. expression
C. trigger
D. action

Answer: CD

Explanation:
Reference:
<https://docs.microsoft.com/en-us/power-automate/get-started-logic-flow>

NEW QUESTION 187
- (Exam Topic 6)
You are authoring a Power Virtual Agents chatbot for a company.
For each of the following statements, select Yes if the statement is true. Otherwise, select No.
NOTE: Each correct selection is worth one point.

Statements	Yes	No
You must create a custom action to display a knowledge base article that answers a common support question.	<input type="radio"/>	<input type="radio"/>
You can use Power Automate to retrieve a customer’s contact number in order to verify they are an authorized user and their support plan SLA.	<input type="radio"/>	<input type="radio"/>

- A. Mastered
- B. Not Mastered

Answer: A

Explanation:
Reference:
<https://docs.microsoft.com/en-us/azure/cognitive-services/qnamaker/tutorials/integrate-with-power-virtual-assist> <https://docs.microsoft.com/en-us/power-virtual-agents/advanced-flow>

NEW QUESTION 190
- (Exam Topic 6)
A company is evaluating ways that they can implement AI Builder.
For which two scenarios can you use AI Builder? Each correct selection presents a complete solution. NOTE: Each correct selection is worth one point.

- A. Send emails to all ai users who subscribe to a service.
- B. Synchronize data from an external database.
- C. Collect data from several data sources and display a dashboard that shows trending data.
- D. Interpret images and perform an action on the image.
- E. Detect patterns in data and predict outcomes

Answer: BD

NEW QUESTION 195
- (Exam Topic 6)
You are building Power BI visualizations for a team.
For each of the following statements, select Yes if the statement is true. Otherwise, select No. NOTE: Each correct selection is worth one point.

Answer Area		
Statement	Yes	No
Power BI can only retrieve data from up to two different sources for each dashboard.	<input type="radio"/>	<input type="radio"/>
Power BI visualizations can be used in canvas apps and model driven apps.	<input type="radio"/>	<input type="radio"/>
Power BI can display charts and list boxes on dashboards.	<input type="radio"/>	<input type="radio"/>

- A. Mastered
- B. Not Mastered

Answer: A

Explanation:
Yes
Yes Yes

NEW QUESTION 198
- (Exam Topic 6)
For each of the following statements, select Yes if the statement is true, Otherwise, select No. NOTE: Each correct selection is worth one point.

Answer Area			
Statement		Yes	No
Power Apps apps can run only on mobile devices.		<input type="radio"/>	<input type="radio"/>
Power Apps can run only with Dynamic 365 products.		<input type="radio"/>	<input type="radio"/>
If a user runs a Power Apps app that accesses information to which the user does not have access, the app grants the user permissions.		<input type="radio"/>	<input type="radio"/>

- A. Mastered
- B. Not Mastered

Answer: A

Explanation:

Answer Area			
Statement		Yes	No
Power Apps apps can run only on mobile devices.		<input type="radio"/>	<input checked="" type="radio"/>
Power Apps can run only with Dynamic 365 products.		<input type="radio"/>	<input checked="" type="radio"/>
If a user runs a Power Apps app that accesses information to which the user does not have access, the app grants the user permissions.		<input checked="" type="radio"/>	<input type="radio"/>

NEW QUESTION 199

- (Exam Topic 6)
A company plans to use Power BI to visualize data from business systems.
For each of the following statements, select Yes if the statement is true. Otherwise, select No.
NOTE: Each correct selection is worth one point.

Statement	Yes	No
You can display data aggregates and raw data in a Power BI report.	<input type="radio"/>	<input type="radio"/>
You can display related data from multiple sources in the same Power BI report.	<input type="radio"/>	<input type="radio"/>

- A. Mastered
- B. Not Mastered

Answer: A

Explanation:

Statement	Yes	No
You can display data aggregates and raw data in a Power BI report.	<input checked="" type="radio"/>	<input type="radio"/>
You can display related data from multiple sources in the same Power BI report.	<input type="radio"/>	<input checked="" type="radio"/>

NEW QUESTION 203

- (Exam Topic 6)
A company is building apps to support their business operations. The apps will use connectors to access data from several data sources and respond to a number of events generated by components.
Which two operations can you use for connectors? Each correct answer presents part of the solution. NOTE: Each correct selection is worth one point.

- A. Triggers
- B. Plug-ins
- C. Actions
- D. Gateways

Answer: CD

NEW QUESTION 206

- (Exam Topic 6)
Match each tool to its task. To answer, drag the appropriate tool from the column on the left to its task on the right. Each tool may be used once, more than once, or not at all.
NOTE: Each correct match is worth one point.

Tools

Power BI

Power Automate

Power Apps

Answer Area

Task

Automate workflows.
Trigger an action from an event.
Create a custom mobile data entry screen.

Tool

- A. Mastered
B. Not Mastered

Answer: A

Explanation:

Tools

Power BI

Power Automate

Power Apps

Answer Area

Task

Automate workflows.
Trigger an action from an event.
Create a custom mobile data entry screen.

Tool

Power Automate

Power BI

Power Apps

NEW QUESTION 208

- (Exam Topic 6)

A company is creating a canvas app to manage weekly status reports from users about projects. Status reports must be created weekly. Users can enter project tasks with descriptions. Users can also add escalation requests for tasks that are late or at risk. When a status report is submitted with an escalation request the app must automatically send a text message to the submitter's manager. A reminder must be sent at 8 PM on Sunday to everyone who has not yet submitted a status report for the previous week. You need to identify the appropriate components to use in the solution. What should you use? To answer, drag the appropriate implementation mechanisms to the correct requirements. Each implementation mechanism may be used once, more than once, or not at all. You may need to drag the split bar between panes or scroll to view content
NOTE: Each correct selection is worth one point

Implementation Mechanisms

Actions

Triggers

Conditions

Business process flows

Answer Area

Action

Automatically send a text message based on the report submission.
Automatically send a reminder at 8 PM based on a missing status report.

Implementation Mechanism

- A. Mastered
B. Not Mastered

Answer: A

Explanation:

Implementation Mechanisms

Actions

Triggers

Conditions

Business process flows

Answer Area

Action

Automatically send a text message based on the report submission.
Automatically send a reminder at 8 PM based on a missing status report.

Implementation Mechanism

Triggers

Actions

NEW QUESTION 211

- (Exam Topic 6)

You have a Power BI report with a page named RevReceived. The page shows gross revenue received by your company. You want to create an almost identical page that shows net revenue instead of gross revenue. What should you do? To answer, select the appropriate option in the answer area.

Answer Area

You should

copy the visuals from RevReceived to a new page.

duplicate the RecReceived page and update the duplicate copy.

import the RevReceived page.

modify the RevReceived page.

- A. Mastered
- B. Not Mastered

Answer: A

Explanation:

Answer Area

You should

copy the visuals from RevReceived to a new page.

duplicate the RecReceived page and update the duplicate copy.

import the RevReceived page.

modify the RevReceived page.

NEW QUESTION 215

- (Exam Topic 6)

You plan to use Power Automate to monitor what people are saying about your company's products. You store the feedback for research and development purposes.

You need to recommend Power Automate components to use for the solution.

To answer drag the appropriate components to the correct requirements. Each component may be used once, more than once, or not at all. You may need to drag the split Car between panes or scroll to view content.

NOTE: Each correct selection is worth one point

Components

action

expression

service

trigger

Answer Area

Requirement

Retrieve the top five posts from your company's Facebook page.
Enter the resulting posts into the product database.
Combine author and link fields into a single field.
Run a flow every hour.

Component

Component

Component

Component

Component

- A. Mastered
- B. Not Mastered

Answer: A

Explanation:

Components

action

expression

service

trigger

Answer Area

Requirement

Retrieve the top five posts from your company's Facebook page.
Enter the resulting posts into the product database.
Combine author and link fields into a single field.
Run a flow every hour.

Component

action

action

expression

trigger

NEW QUESTION 218

.....

Passing Certification Exams Made Easy

visit - <https://www.surepassexam.com>

Thank You for Trying Our Product

We offer two products:

1st - We have Practice Tests Software with Actual Exam Questions

2nd - Questions and Answers in PDF Format

PL-900 Practice Exam Features:

- * PL-900 Questions and Answers Updated Frequently
- * PL-900 Practice Questions Verified by Expert Senior Certified Staff
- * PL-900 Most Realistic Questions that Guarantee you a Pass on Your First Try
- * PL-900 Practice Test Questions in Multiple Choice Formats and Updates for 1 Year

100% Actual & Verified — Instant Download, Please Click
[Order The PL-900 Practice Test Here](#)