

Cisco

Exam Questions 200-901

Developing Applications and Automating Workflows using Cisco Core Platforms (DEVASC)



NEW QUESTION 1

Refer to the exhibit.

```
$ diff -u5 fish.py cat.py
--- fish.py      2020-01-02 09:41:02.840000000 +0100
+++ cat.py      2020-01-02 09:41:06.8859999800 +0100
@@ -160,11 +160,12 @@

    @single_request_timeout.setter
    def single_request_timeout(self, value):
        """The timeout (seconds) for a single HTTP REST API request."""
        check_type(value, int, optional=True)
-       assert value is None or value > 0
+       if value is not None and value <= 0:
+           raise ValueError("single_request_timeout must be positive integer")
        self._single_request_timeout = value

    @property
    def wait_on_rate_limit(self)
        """Automatic rate-limit handling.
```

What does the python function do?

- A. It returns DNAC user and password.
- B. It returns HTTP Basic Authentication.
- C. It returns an authorization token.
- D. It reads a token from a local JSON file and posts the token to the DNAC URL.

Answer: C

NEW QUESTION 2

What are two advantages of version control software? (Choose two.)

- A. It supports tracking and comparison of changes in binary formate files.
- B. It allows old versions of packaged applications to be hosted on the Internet
- C. It provides wiki collaboration software for documentation.
- D. It supports comparisons between revisions of source code files.
- E. It allows new team members to access the current code and history.

Answer: DE

NEW QUESTION 3

In python, which expression checks whether the script returns a success status code when the Requests library is used?

- A. response.status_code== requests.ok
- B. respons.status_code== requests.codes.ok
- C. response.code== requests.codes.ok
- D. response.status_code != requests.codes.ok

Answer: B

NEW QUESTION 4

Refer to the exhibit.

```
curl -X [redacted] -H "[redacted]: application/json" \
-H "[redacted]: Bearer AbCdEf123456" https://localhost/api/myresource
```

Which two statement describe the configuration of the Ansible script is run? (Choose two.)

- A. Traffic on port 0/2 and 0/3 is connected to port 0/6.
- B. Traffic from ports 0/2 to 0/5 can flow on port 0/1 due to the trunk.
- C. Traffic can flow between ports 0/2 to 0/5 due to the trunk on port 0/1.
- D. GigabitEthernet0/2 and GigabitEthernet0/3 are access ports for VLAN 6.
- E. GiabitEthernet0/1 is left unconfigured.

Answer: BD

NEW QUESTION 5

Drag and drop the network component names from the left onto the correct descriptions on the right. Not all options are used.

```
#!/bin/bash
BACKUPTIME    =`date +%b-%d-%y`
DESTINATION   =/home/usr/path/backup-$BACKUPTIME.tar.gz
SOURCEFOLDER  =/home/usr/path/data_folder

tar -cpzf $DESTINATION $SOURCEFOLDER
```

- A. Mastered
- B. Not Mastered

Answer: A

Explanation:

1 – A, 2 – B, 3 – D, 4 – C

NEW QUESTION 6

What is the outcome of executing this command?

```
git clone ssh://john@exmaple.com/path/to/my-project_git
```

- A. Creates a local copy of a repository called “my project”
- B. Creates a copy of a branch called “my project”
- C. Initiates a new Git repository called “my project”
- D. Creates a new branch called “my project”

Answer: A

NEW QUESTION 7

When a Cisco IOS XE networking device is configured using RESTCONF, what is the default data-encoding method?

- A. XML
- B. x-form-encoding
- C. YANG
- D. YAML

Answer: A

NEW QUESTION 8

Refer to the exhibit.

```
{
  "items": [{
    "kind": "object#NetworkObj",
    "selfLink": "https://10.201.230.5/api/objects/networkobjects/db01",
    "name": "db01",
    "host": {
      "kind": "IPv4address",
      "value": "172.16.0.11"
    },
    "objectId": "db01"
  }]
}
```

What is the action of the Bash script that is shown?

- A. The script waits until input is entered
- B. If the directory exists, the script goes into it until there is no directory with the same name, then it creates a new directory.
- C. The script goes into the directory called “\$ndir” and makes a new directory called “\$ndir”
- D. The script waits until input is entered, then it goes into the directory entered and creates a new directory with the same name.
- E. For all directories in the current folder
- F. The script goes into directory and makes a new directory.

Answer: A

NEW QUESTION 9

A developer is writing an application that a REST API and the application requires a valid from the API which element of the response is used in the conditional check?

- A. URL
- B. Status code
- C. Link
- D. Body
- E. Headers

Answer: B

NEW QUESTION 10

Drag and drop the network automation interfaces from the left onto the transport protocols that they support on the right.

SSH

HTTP

HTTP/2

HTTPS

gRPC

NETCONF

RESTCONF

- A. Mastered
- B. Not Mastered

Answer: A

Explanation:
gRPC = C, NETCONF = A, RESTCONF = B, D

NEW QUESTION 10

Which is an advantage of using network programmability?

- A. It removes CLI access for devices.
- B. It provides for more scalable and replicable network provisioning.
- C. Manual configuration is faster.
- D. No cloud abstraction occurs.

Answer: B

NEW QUESTION 12

Refer to the exhibit.

A. [{
 "books": {
 "science": {
 "biology": "10.00",
 "geology": "9.00",
 "chemistry": "8.00"
 },
 "math": {
 "calculus": "20.00",
 "algebra": "12.00"
 }
 }
}]

B. {
 "books": [
 "science": {
 "biology": "10.00",
 "geology": "9.00",
 "chemistry": "8.00"
 },
 "math": {
 "calculus": "20.00",
 "algebra": "12.00"
 }
]
}

Which python data structure does my_josn contain?

- A. List
- B. Json

- C. Map
- D. Dict

Answer: D

NEW QUESTION 14

When using the Bash shell, how is the output of the devnet command saved to a file named "output.txt"?

- A. devnet & output.txt
- B. devnet > output.txt
- C. devnet < output.txt
- D. devnet | output.txt

Answer: B

NEW QUESTION 15

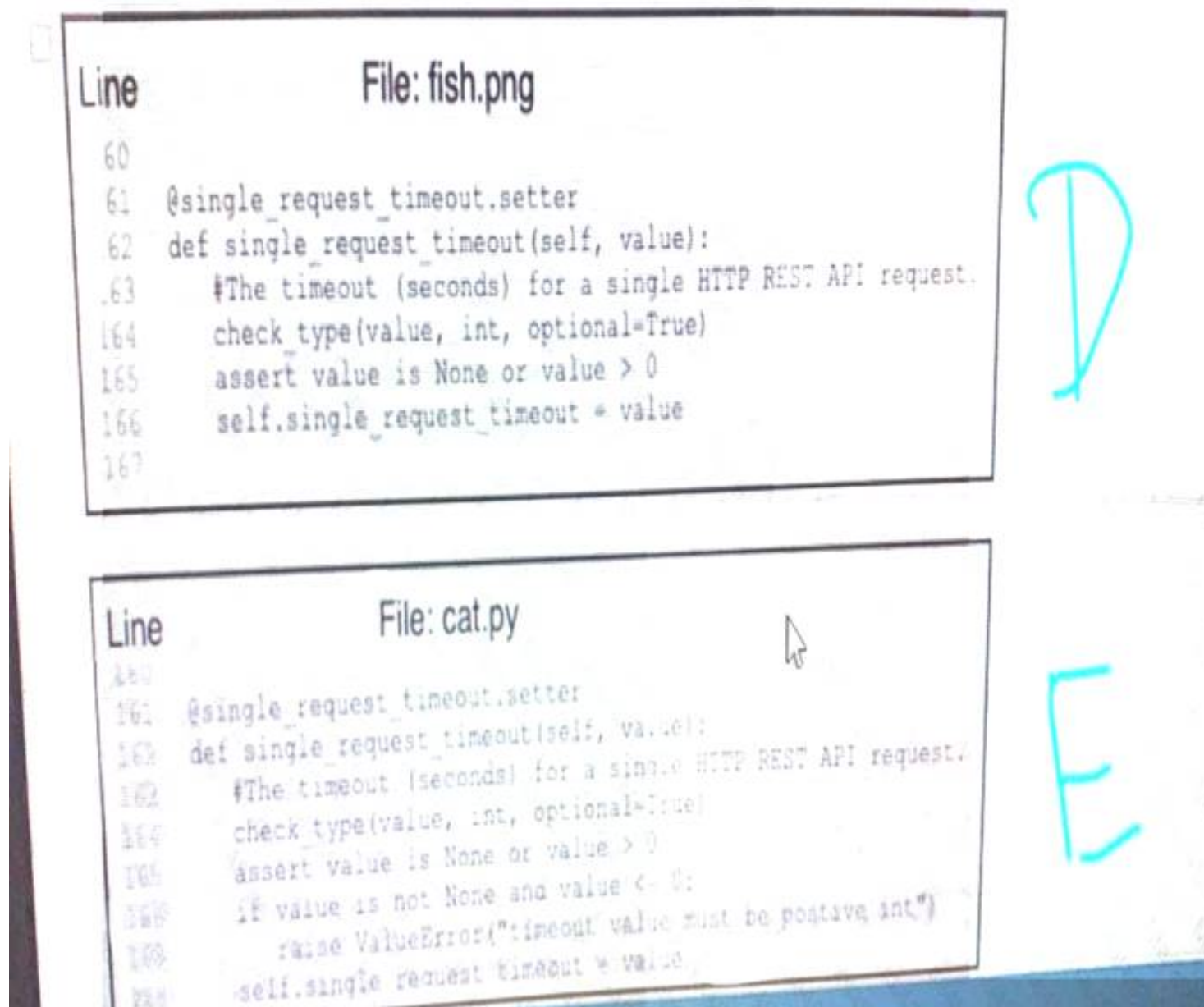
Which action resolves a 401 error in response to an HTTP GET that is issued to retrieve statement using RESTCONF on a CSR 1000V?

- A. Change the HTTP method to PUT.
- B. Change the transport protocol to HTTPS.
- C. Check the MIME types in the HTTP headers.
- D. Check the authentication credentials.

Answer: D

NEW QUESTION 18

Refer to the exhibit.



What is the effect of this Ansible playbook on an IOS router?

- A. A new running configuration is pushed to the IOS router.
- B. The current running configuration of the IOS router is backed up.
- C. The start-up configuration of the IOS router is copied to a local folder.
- D. A new start-up configuration is copied to the IOS router.

Answer: B

NEW QUESTION 22

An automation script fails to connect to an internal server exactly 1 out of 2 times it is executed. This behavior is seen from different clients. Which networking device must be at fault?

- A. Laptop on which the script is running
- B. Router
- C. Switch

D. Load balancer

Answer: D

NEW QUESTION 27

Which description of a default gateway is true?

- A. It is a device that receives IP packets that have no explicit next-hop in the routing table.
- B. It is a feature that translates between public and private addresses.
- C. It is a security feature that denies certain traffic.
- D. It is a device that receives Layer 2 frames with an unknown destination address.

Answer: A

NEW QUESTION 31

Refer to the exhibit.

```
leaf IPPeer {
  type union {
    type inet:ipv4-address;
    type inet:ipv6-address;
  }
}
```

Drag and drop the descriptors from the left onto the correct parts of the API request and response on the right.

☐ {
 "IPPeer": "10.1.1.1"
 }
☐ {
 "IPPeer": "10.1.1.1 2001:db::1"
 }
☐ {
 "IPPeer": [
 "10.1.1.1",
 "2001:db::1"
]
 }
☐ {
 "IPPeer": [
 "10.1.1.1"
]
 }

- A. Mastered
- B. Not Mastered

Answer: A

Explanation:

A – E, B – D, C – B, D – C, E – A, F – F

NEW QUESTION 36

Which two statements are true about Cisco UCS manager, Cisco Intersight APIs? (Choose two.)

- A. Cisco Intersight API interactions can be encoded in XML or JSON and require an APIs key in the HTTP header for authentication.
- B. USC Director API interactions can be XML- or JSON-encoded and require an APLs key in the HTTP header for authentication.

- C. UCS manager API interactions are XML-encoded and require a cookie in the method for authentication.
- D. Cisco Intersight uses XML to encoded API interactions and requires an API key pair for authentication.
- E. UCS manager uses JSON to encode API interactions and utilizes Base64-encoded credentials in the HTTP header for authentication.

Answer: BC

NEW QUESTION 37

Which two types of NAT are used in a network? (Choose two.)

- A. Static NAT
- B. Normal NAT
- C. Multicast NAT
- D. Dynamic NAT
- E. Router NAT

Answer: AD

NEW QUESTION 40

A developer is reviewing a code that was written by a colleague. It runs fine, but there are many lines of code to do a seemingly simple task repeatedly. Which action organizes the code?

- A. Refactor the code by removing any unnecessary tests
- B. Using functions, rewrite any pieces of code that are repeated
- C. Reverse engineer and rewrite the code logic
- D. Modify the code to use loops

Answer: B

NEW QUESTION 45

Which two statement describe the role of an artifact repository in a CI/CD pipeline? (Choose two.)

- A. An artifact repository allows to compare and merge changes in the source code of files involved in a build process.
- B. An artifact repository is needed only for CI/CD pipeline executed on a public cloud infrastructure.
- C. An artifact repository provides traceability, search, and management of binary files.
- D. An artifact repository is needed only for managing open source software.
- E. An artifact repository stores files needed and generated during the build process.

Answer: CE

NEW QUESTION 50

Drag and drop the requests from the left into the correct order on the right to create and check the path trace between two devices using Cisco DNA center API.



- A. Mastered
- B. Not Mastered

Answer: A

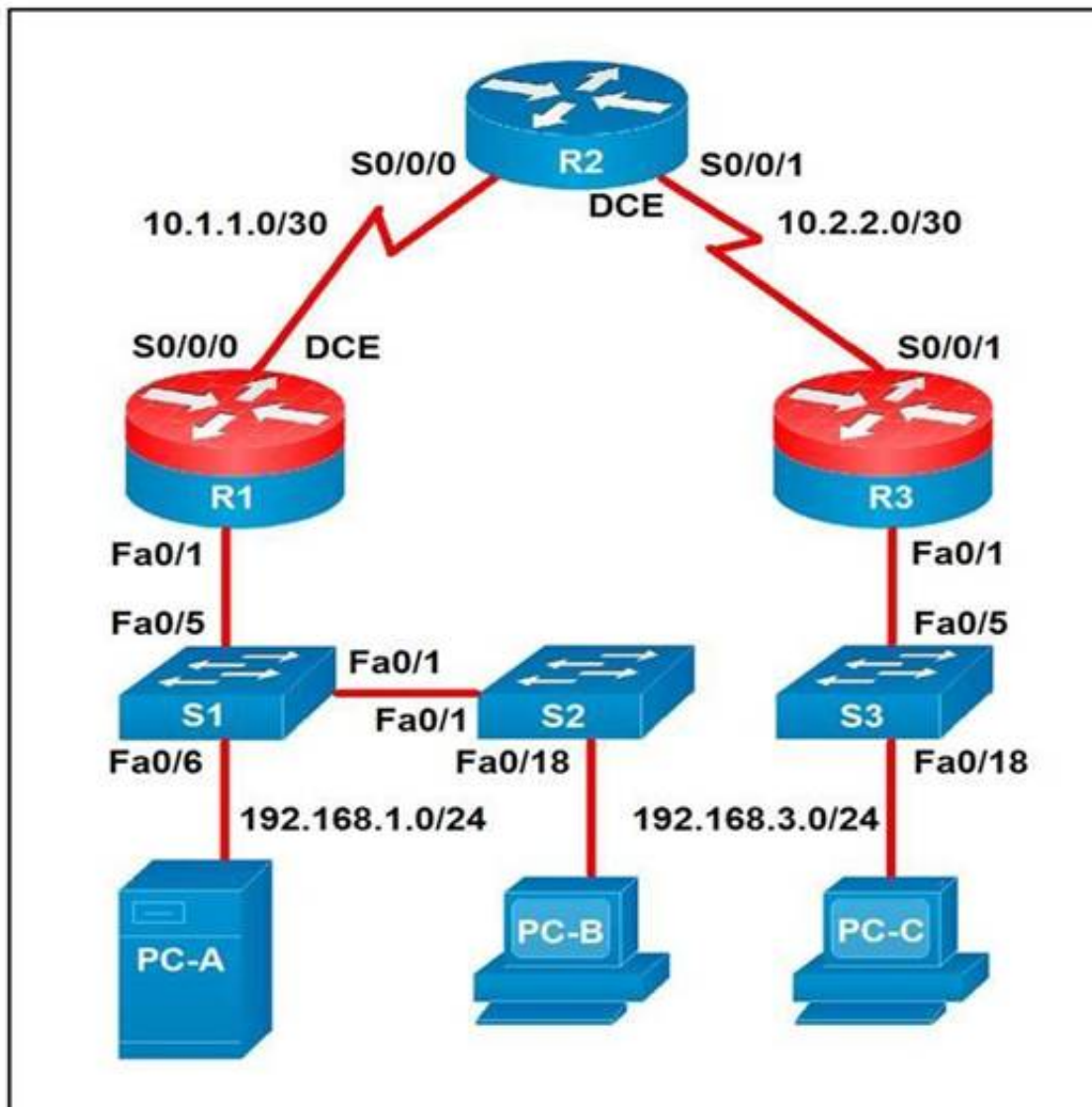
Explanation:

1 – C, 2 – D, 3 – B, 4 - A

NEW QUESTION 53

Refer to the exhibit.





A developer is troubleshooting an API with the given API with the given API documentation and cURL command. What is the cause of this problem?

- A. The user is not allowed to post messages from their account
- B. The request body is missing or incomplete
- C. The API token specified is expired
- D. The authorization header is missing or incomplete

Answer: C

NEW QUESTION 58

Before which process is code review performed when version control is used?

- A. committing code
- B. branching code
- C. merge of code
- D. checkout of code

Answer: C

NEW QUESTION 62

Drag and drop elements of the RESTCONF protocol stack from the left onto the correct description on the right. Not all elements on the left are used.

```
List the networks in a Meraki organization:

GET https://api.meraki.com/api/v0/organizations/<org_id>/networks
Response code: 200
Response body: [ {
  "id": <network_id>,
  "name": "Test Network",
  "organization_id": <new_org_id>,
  "type": "wireless",
  "timeZone": "America/Los_Angeles",
  "tags": " test "
}
```

- A. Mastered
- B. Not Mastered

Answer: A

Explanation:

1 – B, 2 – E, 3 - F

NEW QUESTION 63

Which two statements describe the advantages of using a version control system? (Choose two.)

- A. It allows for branching and merging so that different tasks are worked on in isolation before they are merged into a feature or master branch.
- B. It allows multiple engineers to work against the same code and configuration files and manage differences and conflicts.
- C. It provides tooling to automate application builds and infrastructure provisioning.
- D. It allows developers to write effective unit tests.
- E. It provides a system to track User Stories and allocate to backlogs.

Answer: AB

NEW QUESTION 65

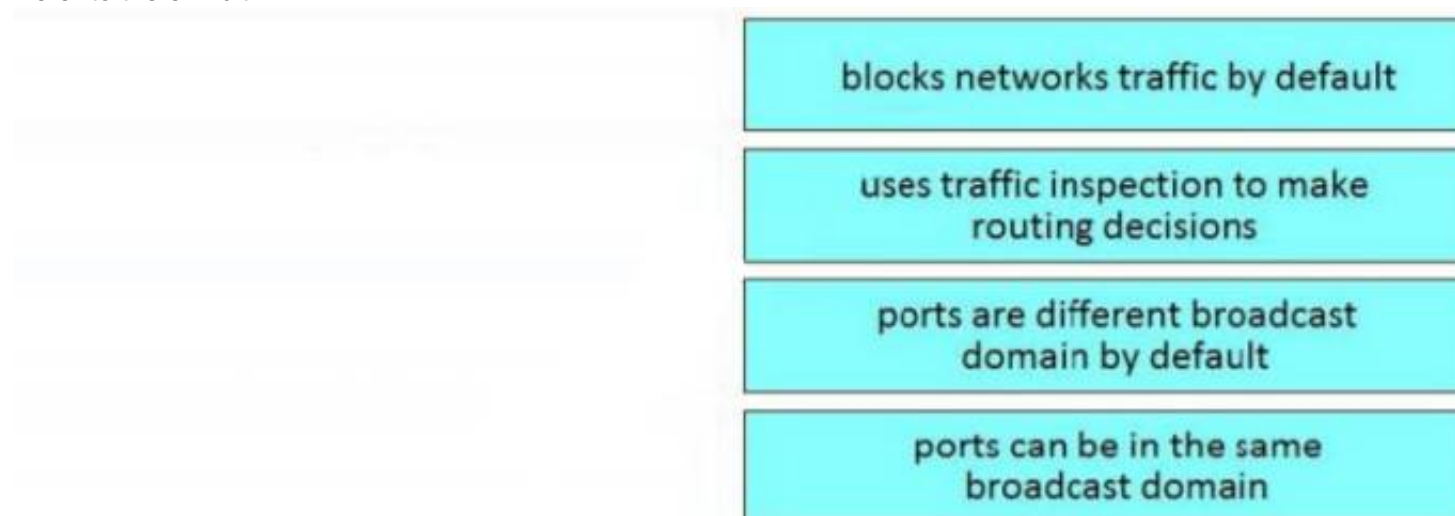
An application calls a REST API and expects a result set of more than 550 records, but each time the call is made, only 25 are returned. Which feature limits the amount of data that is returned by the API?

- A. pagination
- B. payload limit
- C. rate limiting
- D. service timeouts

Answer: A

NEW QUESTION 66

Refer to the exhibit.



Given the API documentation for the UCS SDK python class, UcsHandle, which code snippet creates a handle instance?

```
---
- hosts: switch2960cx
  gather_facts: no

  tasks:
    - ios_l2_interface:
      name: GigabitEthernet0/1
      state: unconfigured

    - ios_l2_interface:
      name: GigabitEthernet0/1
      mode: trunk
      native_vlan: 1
      trunk_allowed_vlans: 6-8
      state: present

    - ios_vlan:
      vlan_id: 6
      name: guest-vlan
      interfaces:
        - GigabitEthernet0/2
        - GigabitEthernet0/3

    - ios_vlan:
      vlan_id: 7
      name: corporate-vlan
      interfaces:
        - GigabitEthernet0/4

    - ios_vlan:
      vlan_id: 8
      name: iot-vlan
      interfaces:
        - GigabitEthernet0/5
```

- A. Option A
- B. Option B
- C. Option C
- D. Option D

Answer: B

NEW QUESTION 70

Which device is a system that monitors and controls incoming and outgoing network traffic based on predetermined security rules?

- A. Switch
- B. Router
- C. Firewall
- D. Load balancer

Answer: C

NEW QUESTION 71

Refer to the exhibit.

URL: https://<ASA_IP>/api/access/global/rules

Method: POST

Payload:

```
{
  "destinationAddress": {
    "kind": "IPv4Address",
    "value": "10.1.1.1"
  },
  "remarks": [ ],
  "active": true
  "permit": true,
  "sourceAddress": {
    "kind": "IPv4Address",
    "value": "192.168.1.1"
  }
}
```

Response Status Code: 400 Bad Request

```
{"messages":[{"level":"Error","code":"JSON-PARSE-ERROR","details":"
Unexpected character ('\'' (code 34)):"}
```

What is the function of the python script?

- A. Count and print the total number of available devices.
- B. Iterate over a list of network devices and write all device names and management IP addresses to anoutput file.
- C. Iterate over a list of network devices and write all device type and associated management IP address.
- D. For each device that is returned, display the device and, for each device, print the device name and management IP address.
- E. Loop through the returned list of network devices and, for each device, print the device name management IP address.

Answer: E

NEW QUESTION 74

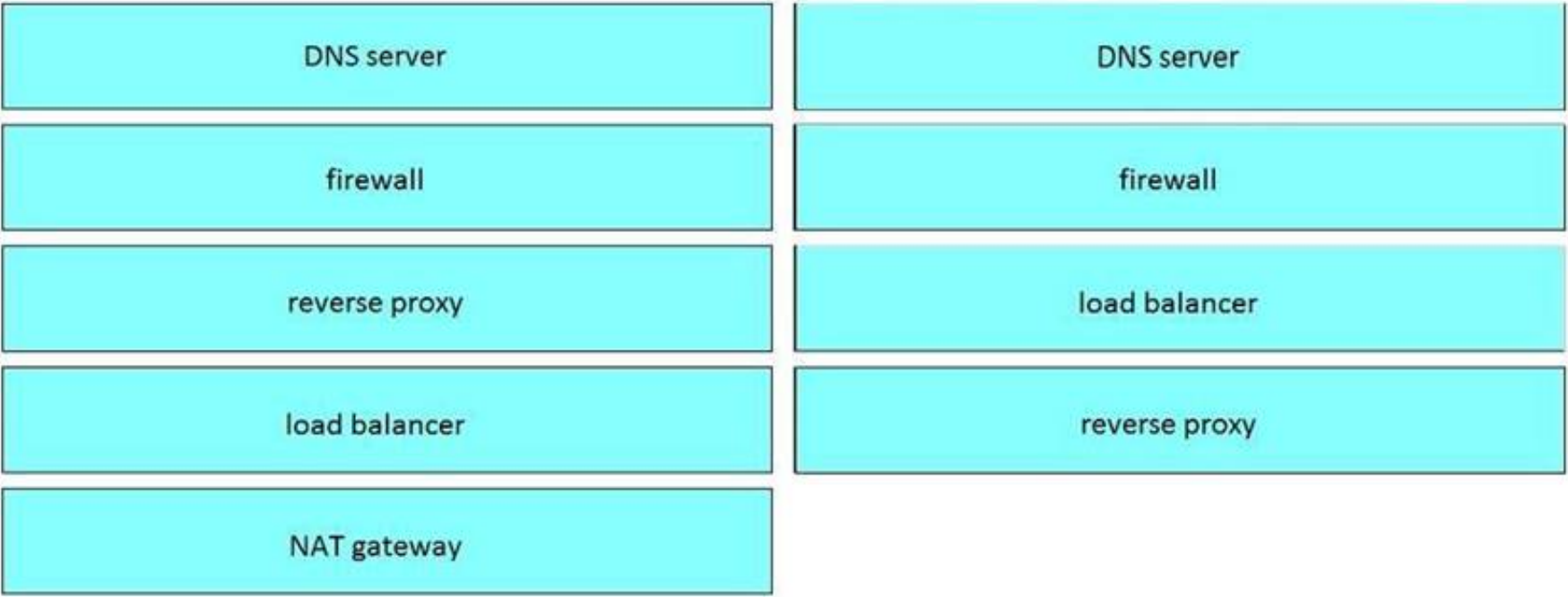
Which model-driven programmability protocol does Cisco IOS XE Software support?

- A. CORBA
- B. SSH
- C. gNMI
- D. SOAP

Answer: C

NEW QUESTION 76

Refer to the exhibit.



Which two statements about the network diagram are true? (Choose two.)

- A. PC-A and PC-B are in the same subnet.
- B. One of the routers has two connected serial interfaces.
- C. The subnet of PC-C can contain 256 hosts.
- D. R1 and R3 are in the same subnet.
- E. The subnet address of PC-B has 18 bits dedicated to the network portion.

Answer: BC

NEW QUESTION 78

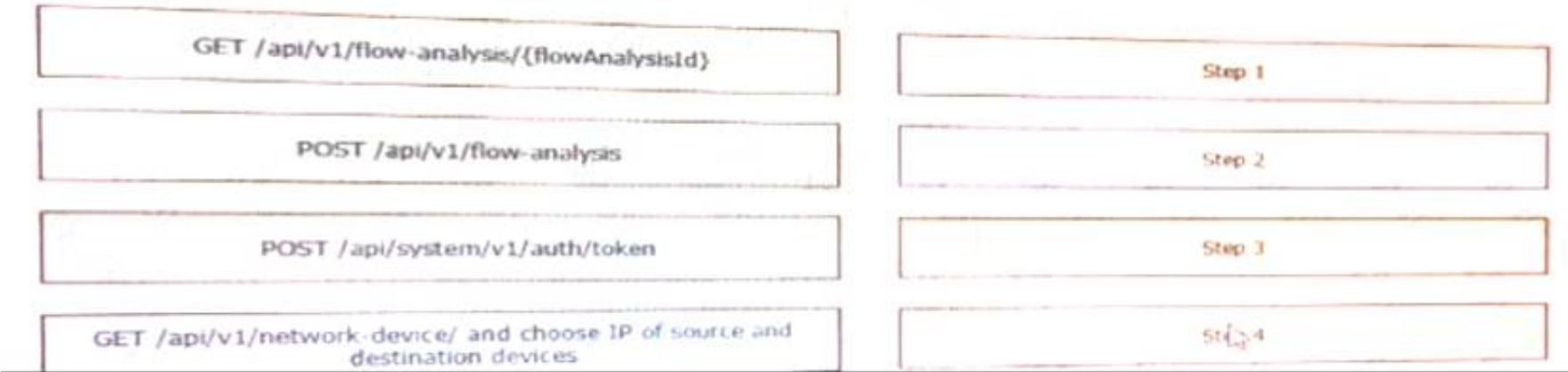
Which two encoding formats do YANG interfaces support?

- A. JSON
- B. XML
- C. XHTML
- D. Plain text
- E. BER

Answer: AB

NEW QUESTION 80

Refer to the exhibit.



The python interpreter and the Cisco python SDK are available by default in the Cisco NX-OS software. The SDK documentation shows how the cild() API can be used when working with JSON and XML. What are two effect of running the script? (Choose two.)

- A. configure interlace loopback 5
- B. issue shutdown on interface loopback 5
- C. show only the interfaces In the up status
- D. show only the interfaces in admin shut status
- E. show details for the TABLE interface

Answer: AC

NEW QUESTION 83

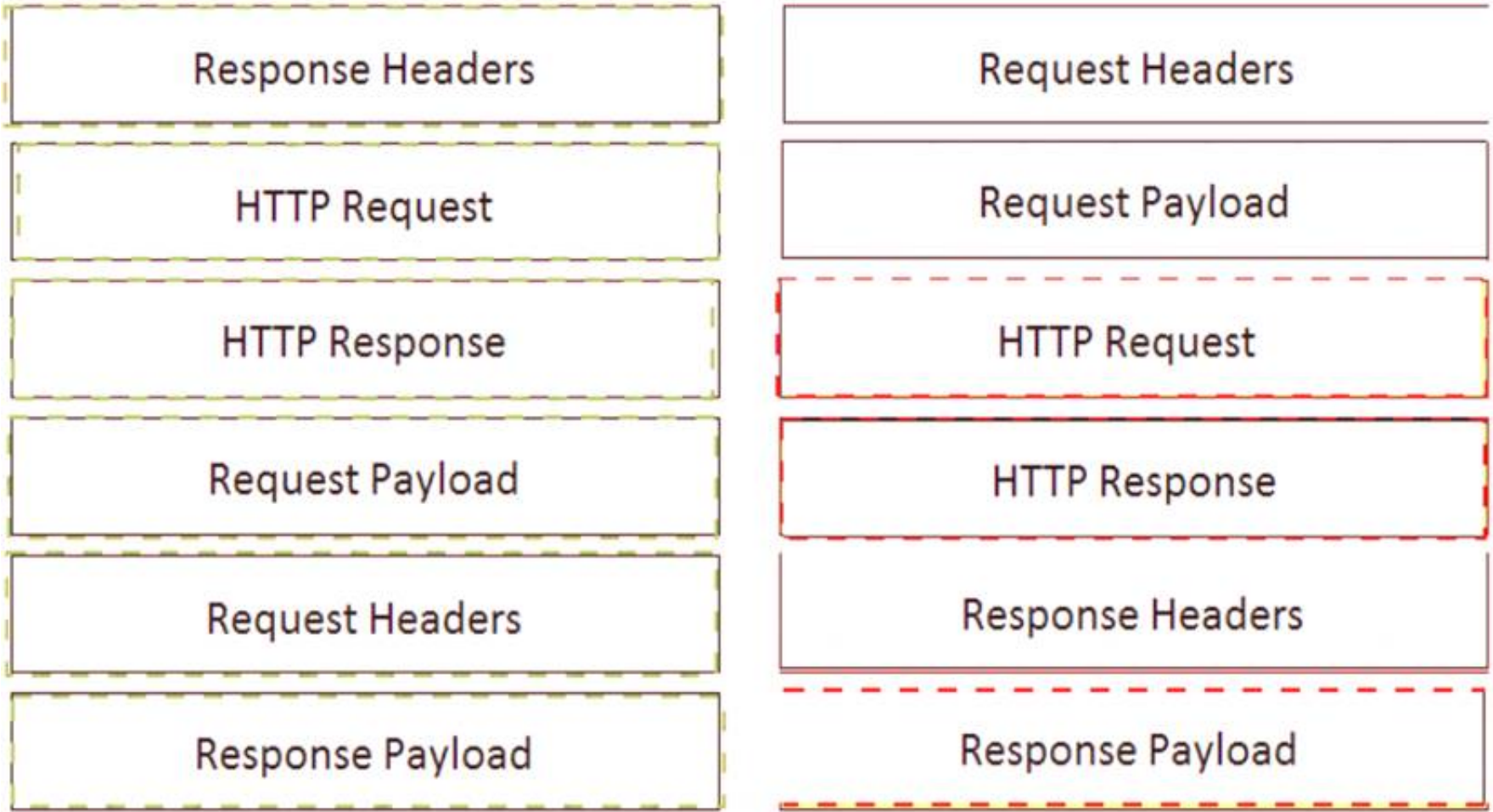
What are two security benefits of a Docker-based application?

- A. easier to patch because Docker containers include only dependencies that the application requires
- B. prevents information leakage that can occur when unhandled exceptions are returned in HTTP responses
- C. allows for separation of application that traditionally run in the same host
- D. natively secures access to secrets that are used by the running application
- E. guarantees container images are secured and free of vulnerabilities

Answer: AC

NEW QUESTION 86

Drag and Drop the Bash commands from the left onto the correct actions on the right.



- A. Mastered
- B. Not Mastered

Answer: A

Explanation:

1 - d, 2 - i, 3 - e, 4 - a, 5 - j, 6 - b, 7 - g, 8 - h, 9 - c, 10 - f

NEW QUESTION 87

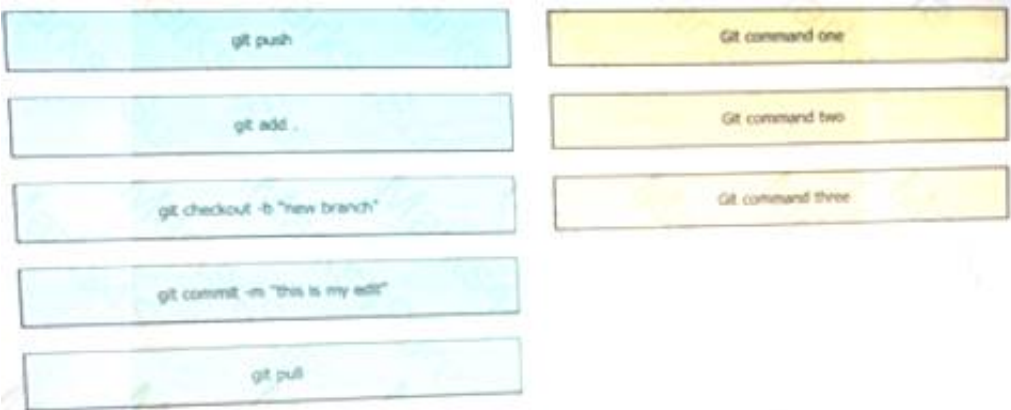
Which statement describes the benefit of using functions in programming?

- A. Functions allow problems to be split into simpler, smaller groups, and reduce code repetition, which makes the code easier to read.
- B. Functions ensure that a developer understands the inner logic contained before using them as part of a script or application.
- C. Functions create the implementation of secret and encrypted algorithms.
- D. Functions store mutable values within a script 01 application.

Answer: A

NEW QUESTION 90

Refer to the exhibit.



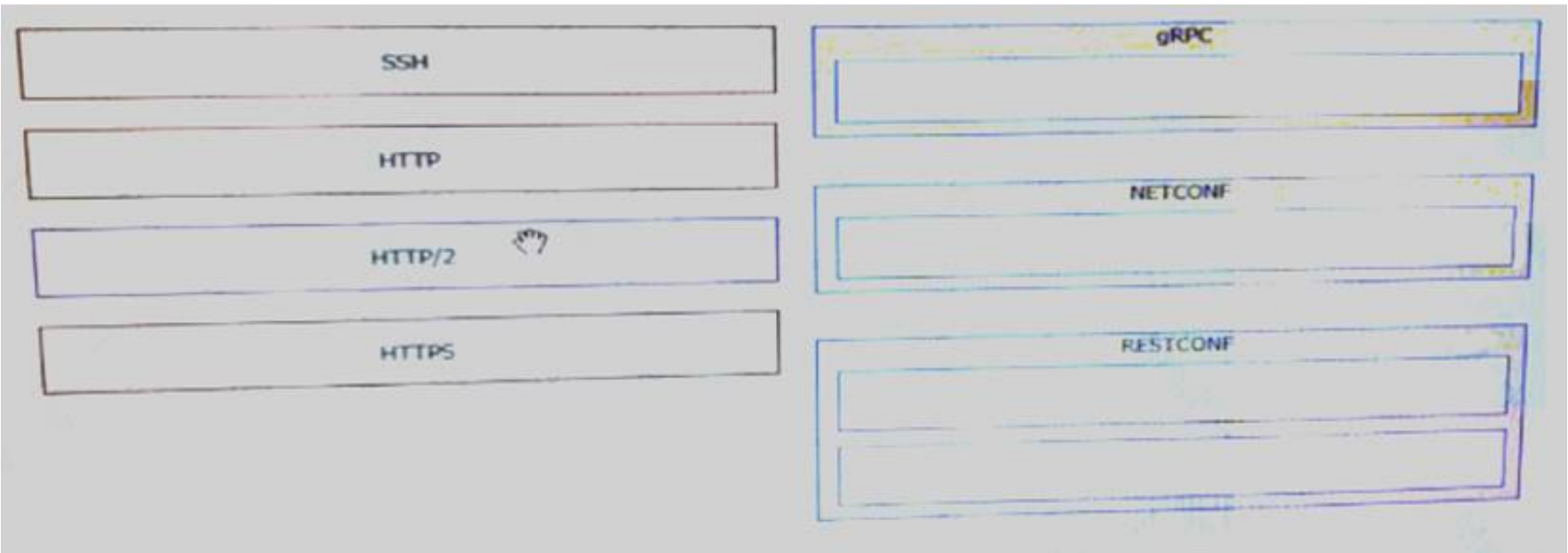
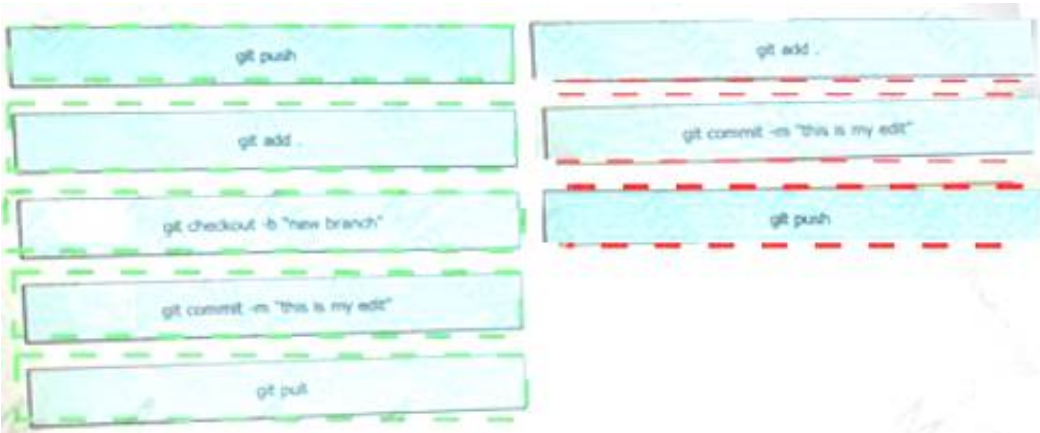
The definition of the YANG module and a RESTCONF query sent to a Cisco Ioc XE device is shown. Which statement is correct if the RESTCONF interface responds with a 204 status code?

- A. The query failed at retrieving the logging seventy level.
- B. The query failed to set the logging seventy level due to an invalid path.
- C. The query retrieved the logging seventy level.
- D. The query updated the logging seventy level or created it if not present on the device.

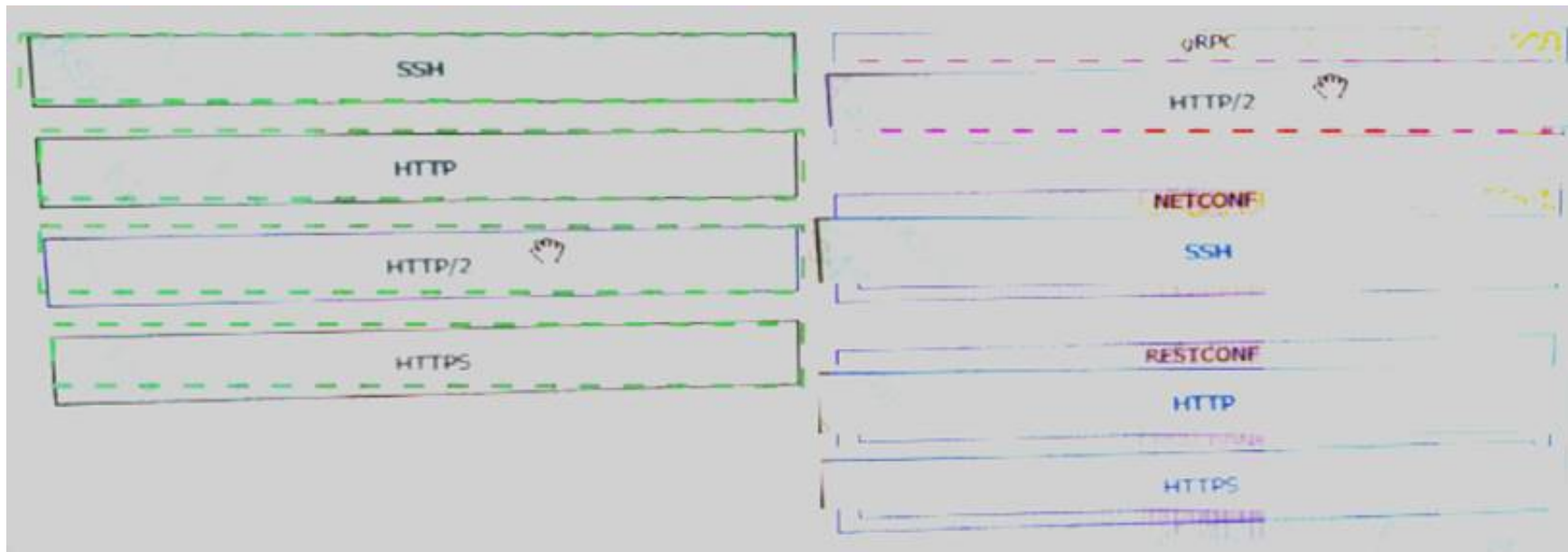
Answer: D

NEW QUESTION 92

Refer to the exhibit.



Drag and drop the code from the left onto the item numbers on the right to complete to Meraki python script shown in the exhibit.



- A. Mastered
- B. Not Mastered

Answer: A

Explanation:

1 – D, 2 – A, 3 – H, 4 – F, 5 – G, 6 – E, 7 – C, 8 – B

NEW QUESTION 96

Refer to the exhibit.

List the clients that have used this network in the timespan

HTTP REQUEST

GET /networks/ {networkId}/clients

PARAMETERS

t0
The beginning of the timespan for the data. The maximum lookback period is 31 days from today.

timespan
The timespan for which the information will be fetched. If specifying timespan, do not specify parameter t0. The value must be in seconds and be less than or equal to 31 days. The default is 1 day.

perPage
The number of entries per page returned. Acceptable range is 3 – 1000. Default is 10.

startingAfter
A token used by the server to indicate the start of the page. Often this is a timestamp or an ID but it is not limited to those. This parameter should not be defined by client applications. The link for the first, last, prev, or next page in the HTTP Link header should define it.

endingBefore
A token used by the server to indicate the end of the page. Often this is a timestamp or an ID but it is not limited to those. This parameter should not be defined by client applications. The link for the first, last, prev, or next page in the HTTP Link header should define it.

The output of a unified diff when comparing two versions of a python script is shown. Which two “single_request_timeout ()”

```

base_url = https://api.meraki.com/api/v0"
network_id = "L_12345678910"
api_key = "1098hadpfsiapsf8ahf8ohp"
requests.<item 1> (
    <item 2> + "/"<item 3>/" + /<item 4>, "/"<item 5>",
    headers = {
        "X-Cisco-Meraki-API-Key": "<item 6>",
        "Content-Type": "<item 7>"
    },
    <item 8>={"<item 9>":"/<item 10>}}

```

- A. Option A

- B. Option B
- C. Option C
- D. Option D

Answer: BC

NEW QUESTION 99

Fill in the blanks to complete the python script to retrieve a list of network devices using the Cisco DNA center API.

params	<item 1>
networks	<item 2>
timespan	<item 3>
get	<item 4>
432000	<item 5>
base_url	<item 6>
application/json	<item 7>
network_id	<item 8>
clients	<item 9>
api_key	<item 10>

- A. Mastered
- B. Not Mastered

Answer: A

Explanation:

params	get
networks	base_url
timespan	networks
get	network_id
432000	clients
base_url	api_key
application/json	application/json
network_id	params
clients	timespan
api_key	432000

NEW QUESTION 102
.....

Thank You for Trying Our Product

We offer two products:

1st - We have Practice Tests Software with Actual Exam Questions

2nd - Questions and Answers in PDF Format

200-901 Practice Exam Features:

- * 200-901 Questions and Answers Updated Frequently
- * 200-901 Practice Questions Verified by Expert Senior Certified Staff
- * 200-901 Most Realistic Questions that Guarantee you a Pass on Your First Try
- * 200-901 Practice Test Questions in Multiple Choice Formats and Updates for 1 Year

100% Actual & Verified — Instant Download, Please Click
[Order The 200-901 Practice Test Here](#)