

UiPath

Exam Questions UiPath-ADAv1

UiPath Automation Developer Associate v1 Exam



NEW QUESTION 1

What describes how the Excel Application Scope activity interacts with a Microsoft Excel file?

- A. Works only with xls files and Excel does not need to be installed
- B. Works with.xlsx files and Excel does not need to be installed
- C. Works only with xlsx files and Excel must be installed
- D. Works with xls and xlsx files and Excel must be installed

Answer: D

Explanation:

The Excel Application Scope activity interacts with a Microsoft Excel file in the following way: it works with xls and xlsx files and Excel must be installed. The Excel Application Scope activity opens an Excel workbook and provides a scope for Excel activities. When the execution of this activity ends, the specified workbook and the Excel application are closed². The Excel Application Scope activity can work with xls (Excel 97-2003 Workbook) and xlsx (Excel Macro-Enabled Workbook) file formats³. However, the Excel Application Scope activity requires Microsoft Excel to be installed on the machine where the automation is running, as it uses the Excel interop assembly⁴. Therefore, the Excel Application Scope activity cannot work with.xlsx (Excel Workbook) files or without Excel installed.

References: Excel Application Scope, File formats that are supported in Excel, and Excel Application Scope - UiPath Activities Guide from UiPath documentation and Microsoft support.

NEW QUESTION 2

Which Control Flow activity is suitable for a developer who needs to assess the value of a counter before executing the loop's body in a workflow?

- A. Do While
- B. Switch
- C.)While
- D. If

Answer: C

Explanation:

The While activity is a Control Flow activity that enables the developer to execute a specified part of the automation while a condition is met. The condition is evaluated before the loop body is executed, which means that the developer can assess the value of a counter or any other variable before performing the actions inside the loop. This type of activity can be useful to iterate through an array, a list, a data table, or any other collection of data, or to repeat an action until a certain value is reached or changed. The While activity can be found in the Activities panel, under Workflow > Control.

References:

? While - UiPath Activities

? While Activity - UiPath Studio

? UiPath While Loop Tutorial with Examples - RPA Tutorial

NEW QUESTION 3

What is the output type returned when using a Get Test Data Queue Item activity?

- A. Dictionary
- B. Dictionary
- C. Object
- D. QueueItem

Answer: A

Explanation:

The Get Test Data Queue Item activity is used to retrieve a test data queue item from Orchestrator and store it in a variable. The output type of the variable is Dictionary, which means that it is a collection of key-value pairs that can be accessed by using the key name. For example, if the test data queue item contains the fields Name, Age, and Gender, then the output variable can be used to get the values of these fields by using expressions like outputVar("Name"), outputVar("Age"), or outputVar("Gender"). (UiPath Studio documentation¹)

References:

? 1: Get Test Data Queue Item - UiPath Activities.

NEW QUESTION 4

A developer has declared a variable of type String named StrVar and assigned it the value "UIPATH STUDIO". What is the output of the expression, StrVar.IndexOf("U")?

- A. 1
- B. 9
- C. 10

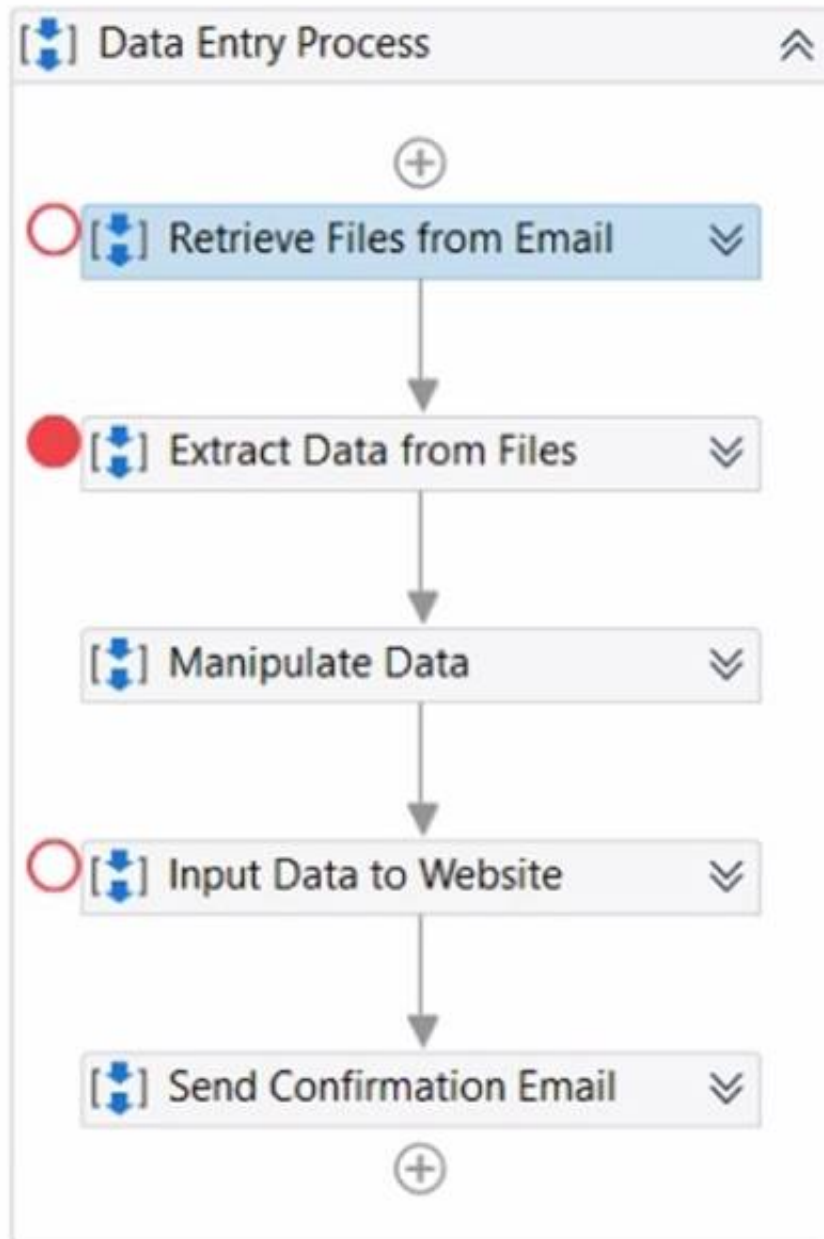
Answer: A

Explanation:

The IndexOf method of String values returns the index of the first occurrence of a specified character or substring in a given string. The index is zero-based, meaning that the first character has the index 0, the second character has the index 1, and so on. If the character or substring is not found, the method returns -1. In this case, the expression StrVar.IndexOf("U") returns the index of the first occurrence of the character "U" in the string "UIPATH STUDIO", which is 0. Therefore, the answer is A. 0. References: String.IndexOf Method, String Variables

NEW QUESTION 5

A developer executes the following workflow in Debug mode with "Continue on Exception " enabled.



How many times will the workflow pause the execution?

- A. 1
- B. 2
- C. 3

Answer: B

Explanation:

The workflow will pause the execution only once when it is executed in Debug mode with “Continue on Exception” enabled. Debug mode is a mode of execution that allows the developer to test and troubleshoot the workflow by using various debugging tools, such as breakpoints, step actions, and output messages⁴. “Continue on Exception” is a debugging option that enables the execution to continue even if an exception is encountered, without displaying the error message or stopping at the faulty activity⁵. In the workflow, there are two activities that can throw exceptions: the “Throw” activity, which throws a custom exception with the message “This is an exception”, and the “Write Line” activity, which writes the value of the “Var” variable to the Output panel. The “Var” variable is not initialized, so it has a null value by default. When the “Write Line” activity tries to write the null value, it throws a `NullReferenceException`, as explained in the previous question. However, since the “Continue on Exception” option is enabled, the execution does not stop at the “Write Line” activity, but continues to the next activity, which is the “Throw” activity. The “Throw” activity throws the custom exception, which is caught by the “Catch” section of the “Try Catch” activity. The “Catch” section contains a “Log Message” activity, which writes the exception message to the Output panel. The execution then moves to the “Finally” section, which contains a “Write Line” activity with the text “This is the end”. The workflow then ends successfully. The only time the execution pauses is when it reaches the breakpoint that is set at the “Throw” activity. A breakpoint is a debugging tool that allows the developer to pause the execution at a specific activity and inspect the values of the variables and arguments, as well as the output messages⁶. The developer can then resume the execution by using the step actions or the continue button⁷. Therefore, the workflow will pause the execution only once at the breakpoint, and not at the exceptions, as they are ignored by the “Continue on Exception” option. References: Debugging a Workflow, Debugging Actions, Breakpoints, and Continue on Exception from UiPath documentation.

NEW QUESTION 6

What is the default URL of the OCR server that runs the Computer Vision service?

- A. <https://server.uipath.com/>
- B. <https://cvserver.uipath.com/>
- C. <https://cv.uipath.com/>
- D. <https://computervision.uipath.com/>

Answer: C

Explanation:

The default URL of the OCR server that runs the Computer Vision service is <https://cv.uipath.com/>. This is the endpoint of the UiPath Computer Vision Cloud service, which provides OCR capabilities for document understanding and UI automation¹. The other options are not valid URLs for the OCR server.

References:

? Document Understanding - UiPath.DocumentUnderstanding.OCR.LocalServer Activities documentation, Introduction section

NEW QUESTION 7

A developer used a dictionary to store employee ID numbers as the key with associated employee surnames as the value What is the benefit of using a dictionary?

- A. Dictionaries can have repeated keys
- B. Dictionaries must have unique values
- C. Dictionaries can be searched by keys or values
- D. Dictionary keys and values can be of different data types

Answer: D

Explanation:

The benefit of using a dictionary is that dictionary keys and values can be of different data types. A dictionary is a collection of key-value pairs, where each key is associated with a value. The key and the value can be of any data type, such as String, Integer, Boolean, Object, etc. This allows for more flexibility and versatility in storing and retrieving data³. For example, a dictionary can store employee ID numbers as the key with associated employee surnames as the value, where the key is of type Integer and the value is of type String. To access the value of a specific key, the syntax `dictionaryName(key)` can be used⁴. References: Dictionaries and How to use dictionary? from UiPath documentation and forum.

NEW QUESTION 8

What happens to existing project dependencies in UiPath Studio when converting a Windows-Legacy project to Windows?

- A. Project dependencies are updated to the highest available version.
- B. Project dependencies are completely removed.
- C. Project dependencies remain unchanged.
- D. Project dependencies are marked as unresolved.

Answer: A

Explanation:

When converting a Windows-Legacy project to Windows, the project dependencies are automatically updated to the highest available version that is compatible with the Windows target framework. This is done to ensure that the project can use the latest features and improvements of the activities packages, as well as to avoid potential issues or conflicts with the legacy versions. The updated dependencies are reflected in the project.json file and the Manage Packages window of the project. The developer can also manually update the dependencies to a specific version if needed.

References:

? Deprecation of the Windows-Legacy Compatibility - UiPath Studio

? Convert Windows Project to Windows-Legacy - UiPath Community Forum

NEW QUESTION 9

Starting with UiPath Studio version 2022.10, what happens to dependencies that lack Windows compatibility when they are converted in a project?

- A. They are replaced with compatible alternatives.
- B. They are removed from the project.
- C. They are marked as unresolved.
- D. They are automatically resolved.

Answer: C

Explanation:

Starting with UiPath Studio version 2022.10, the default project type is Windows, which uses .NET 6 or .NET 5 with Windows support¹. If a project contains dependencies that lack Windows compatibility, such as custom activities or libraries, they are marked as unresolved when the project is converted to Windows². The developer needs to manually resolve them by finding compatible alternatives or updating the code³. References:

? Studio - Hardware and Software Requirements documentation, Project

Compatibility section

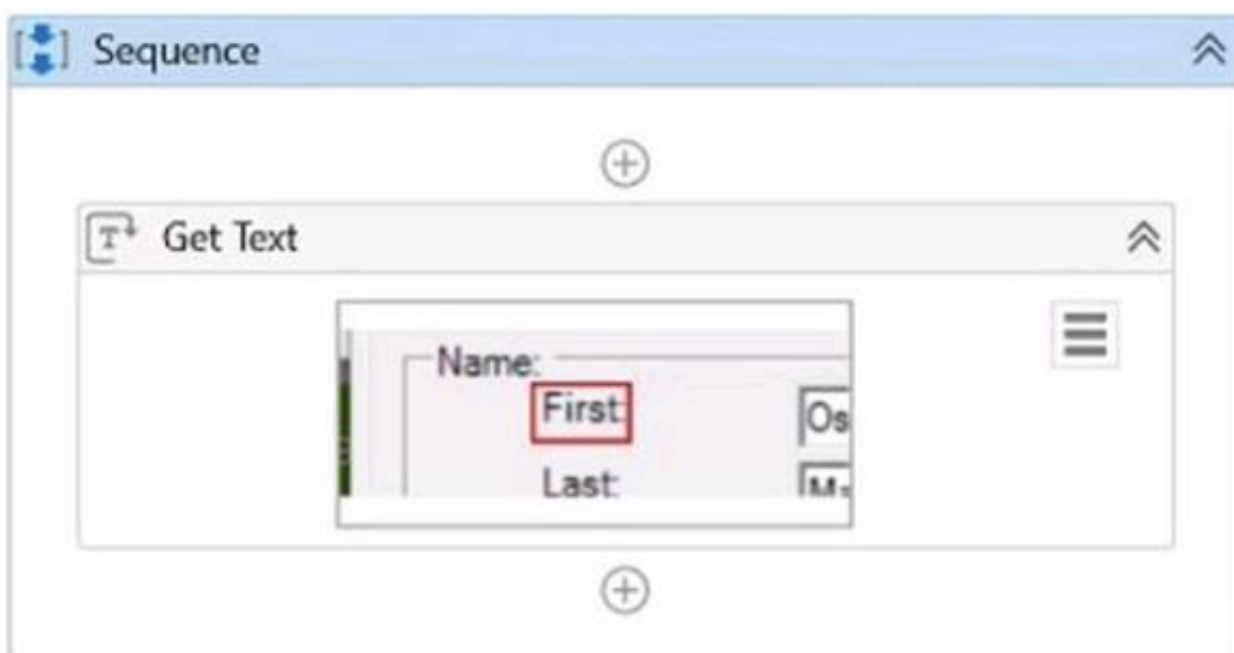
? Getting error: No compatible version with windows projects forum post, Question by @RajeshT

? Uipath New Version Features - 2022.10.3 blog post, New Default Project Compatibility = Windows section

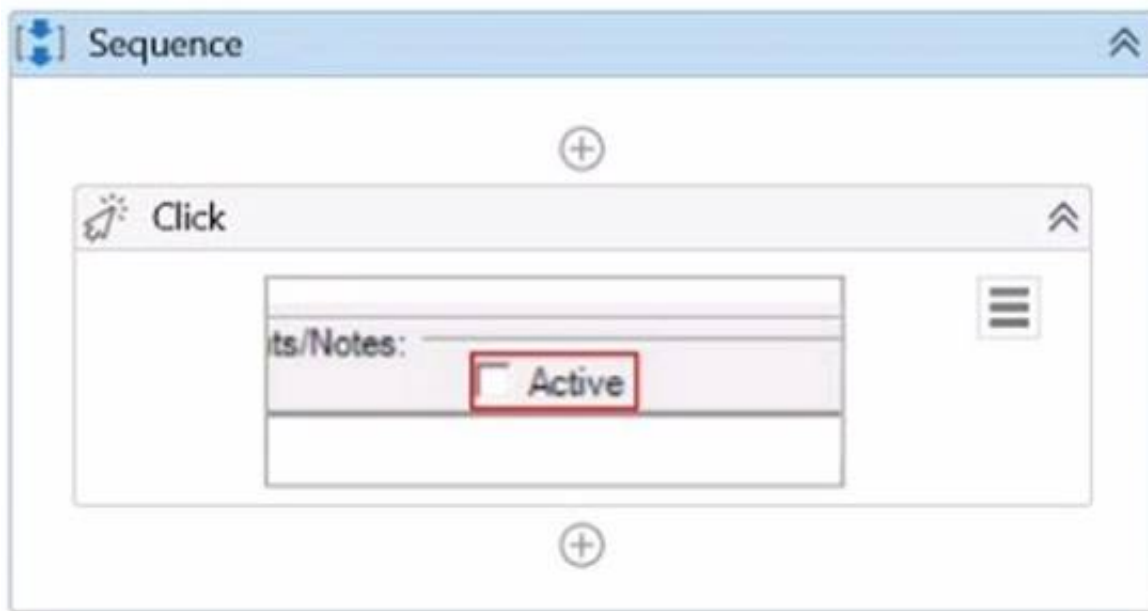
NEW QUESTION 10

What represents a sequence that contains an activity with a partial selector?

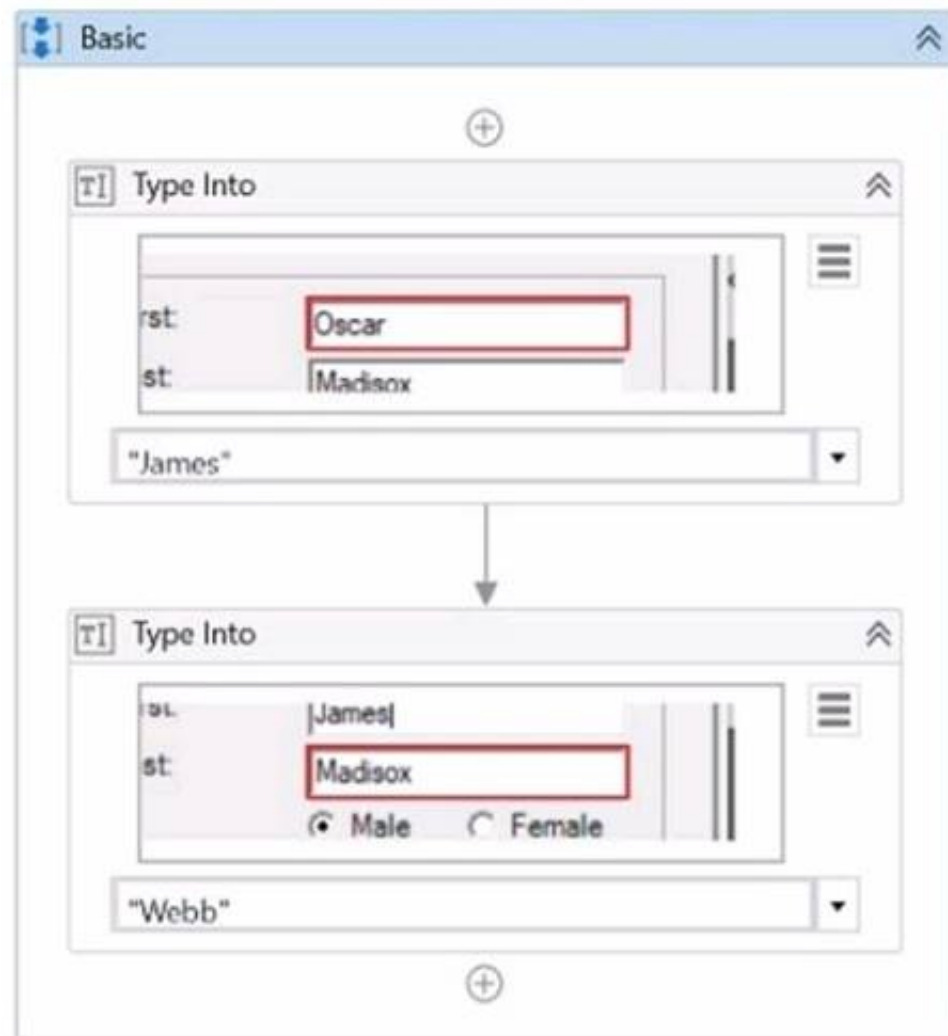
A)



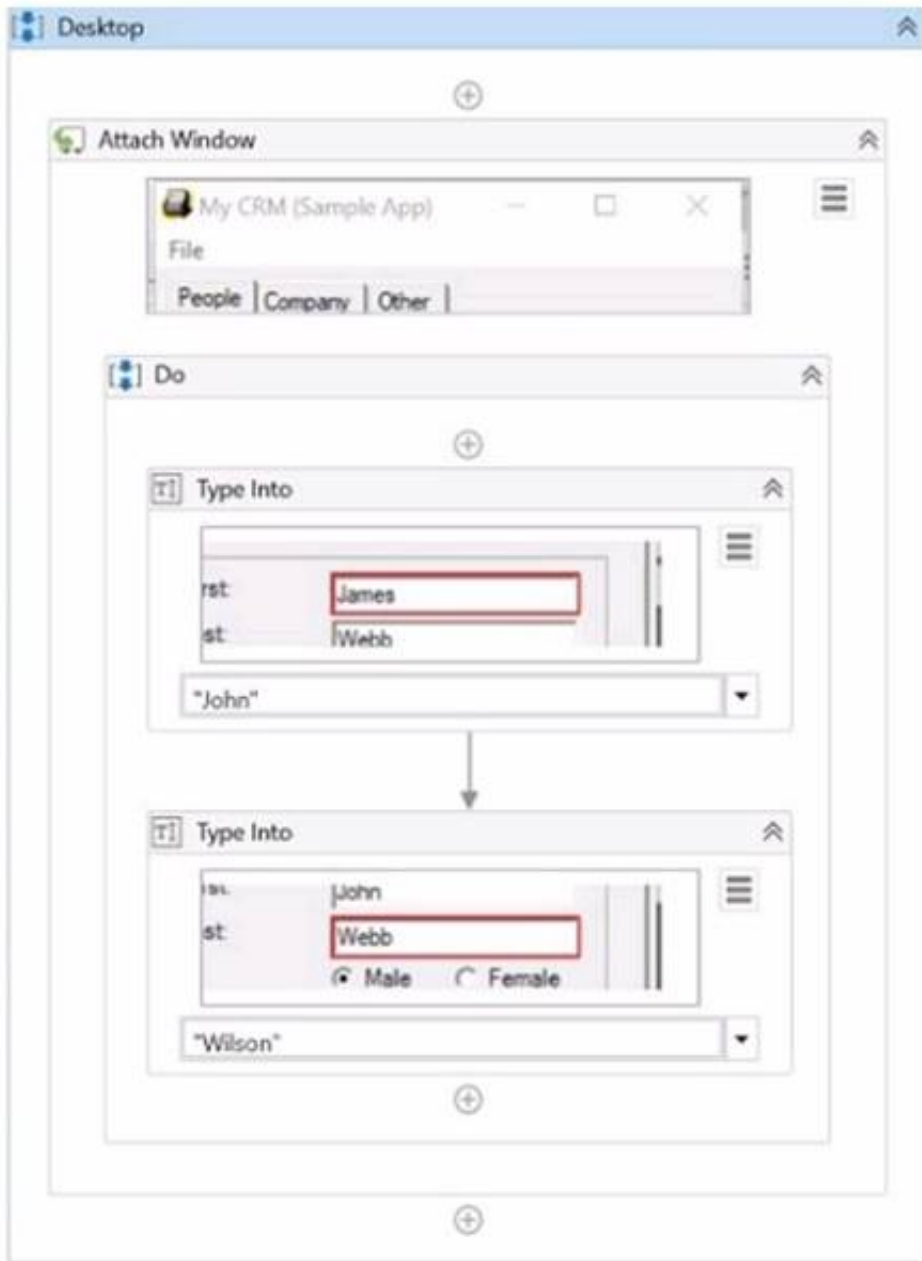
B)



C)



D)



- A. Option A
- B. Option B
- C. Option C
- D. Option D

Answer: B

Explanation:

A partial selector is a selector that does not contain the information about the top-level window. A partial selector is usually generated when a UI Automation activity is included in a container activity, such as Attach Browser or Attach Window, that has a full selector of the outer window. This way, the UI Automation activity can use the partial selector relative to the container, instead of the full selector from the root. A partial selector is indicated by the icon in the Properties panel of the UI Automation activity. In this question, the sequence that contains an activity with a partial selector is Option B, where the Click activity has the partial selector icon and is enclosed in an Attach Window activity. The other options have activities with full selectors, indicated by the icon . Therefore, the answer is B. Option B.

References: Full Versus Partial Selectors, Selectors

NEW QUESTION 10

Which of the following workflow names is correct, based on best practices?

- A. Transactionstatus
- B. Workflow1
- C. creation_of_file
- D. ScrapeFilteredStocks

Answer: D

Explanation:

The correct workflow name, based on best practices, is ScrapeFilteredStocks. This is because it follows the Pascal Case convention, which means that the first letter of each word is capitalized and there are no spaces or underscores between the words. This convention makes the workflow name easy to read and understand, as well as consistent with the UiPath standards. The other workflow names are incorrect because they either use lower case, snake case, or have no meaningful description. For example, Transactionstatus should be TransactionStatus, Workflow1 should be more descriptive, and creation_of_file should be CreationOfFile.

References:

- ? Naming Rules and Best Practices - Studio - UiPath Community Forum
- ? Workflow Design - UiPath Studio

NEW QUESTION 14

Which of the following is an outcome of converting a personal workspace into a folder in UiPath Orchestrator?

- A. The owner of the initial workspace is added by default to the newly created folder and assigned the Folder Administrator role.
- B. The owner of the initial workspace and the admin user are added by default to the newly created folder and assigned the Personal Workspace Administrator

- role.
- C. The admin user is added by default to the newly created folder with the User Administrator role.
- D. The owner of the initial workspace loses access to the newly created folder and the existing admin users are added by default.

Answer: A

Explanation:

A personal workspace in UiPath Orchestrator is a type of modern folder that allows a user to work on their own automation projects without affecting other users or folders¹. A personal workspace can be converted into a regular folder by using the Convert to Folder option in the folder settings². When this happens, the owner of the initial workspace is added by default to the newly created folder and assigned the Folder Administrator role². This role gives the user full control over the folder and its entities, such as processes, queues, assets, etc³. The other options are incorrect because they do not reflect the actual outcome of converting a personal workspace into a folder.

References: Personal Workspaces documentation, Use of UiPath Orchestrator Folder Packages and Workspaces, Folder Roles documentation.

NEW QUESTION 17

What is the correct method to check how many resources are utilized in a personal workspace in UiPath Orchestrator?

- A. Navigate to Tenant > Folders, click the All Workspaces tab, and then click Check Resources for the desired workspace.
- B. Navigate to Tenant > Folders, click the Personal Workspaces tab, and then click See Usage for the desired workspace.
- C. Navigate to Tenant > Users, click the Personal Workspaces tab, and then click Resources for the desired workspace.
- D. Navigate to Tenant > Folders, click the Personal Workspaces tab, and then click Manage Resources for the desired workspace.

Answer: B

Explanation:

To check how many resources are utilized in a personal workspace in UiPath Orchestrator, you can use the See Usage option that displays the current consumption of resources for each workspace. You can also see the total number of resources allocated to all personal workspaces in your tenant. (Orchestrator - Personal Workspaces - UiPath Academy) References:

? Orchestrator - Personal Workspaces - UiPath Documentation Portal

? Orchestrator - Personal Workspaces - UiPath Documentation Portal

? Difference Between Tenant and Personal Workspace - Studio - UiPath Forum

? Personal Workspace in UiPath Orchestrator - mumas

? UiPath Personal Workplaces in Orchestrator | UiPath Academy

NEW QUESTION 20

What advantages do pre-built connectors in UiPath Integration Service offer?

- A. Reducing the need for UI and API automation, allowing developers to work exclusively with connectors.
- B. Simplified integration with popular applications, faster deployment, and integration across all UiPath Platform product solutions.
- C. Providing a fully customizable catalog of connectors for developing proprietary applications.
- D. Replacing all types of authorization and authentication protocols with a single, standardized method.

Answer: B

Explanation:

Pre-built connectors in UiPath Integration Service offer the advantage of simplifying the integration process for any automation that uses common applications such as Salesforce, Slack, Microsoft Office 365, SAP®, ServiceNow, and Google G Suite¹. They also enable faster deployment and integration across all product solutions within the UiPath Platform². References:

? New UiPath Integration Service blog post, Pre-built connectors deliver speed and time-to-value section

? Integration Service - Connectors documentation, Introduction section

? Question Answering Results from web search results, New UiPath Integration Service snippet

NEW QUESTION 21

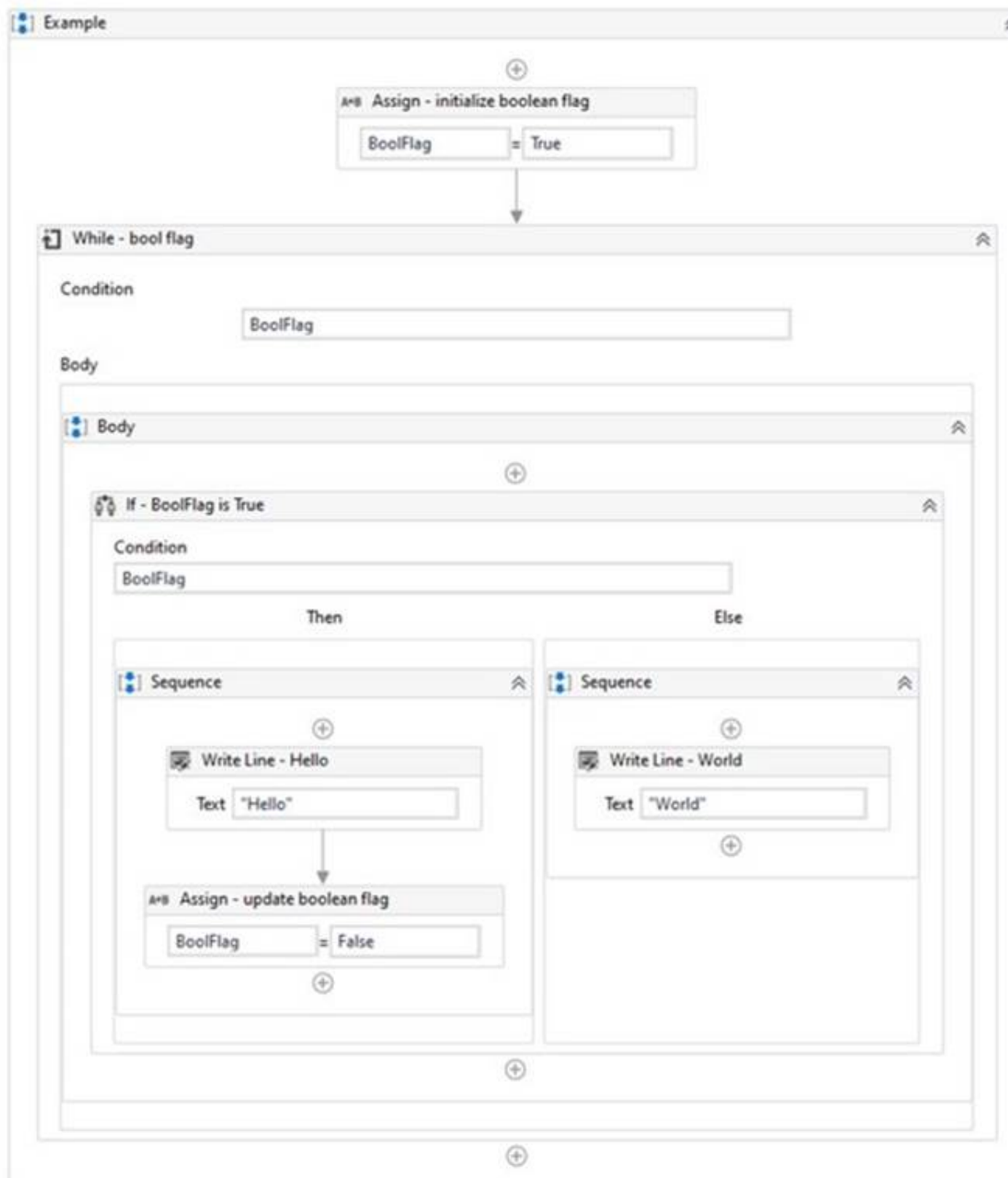
When installing UiPath Studio, which of the following actions require administrator privileges?

- A. Administrator privileges are not required for installing UiPath Studio.
- B. Administrator privileges are required for installing the robot in both service mode and user mode.
- C. Administrator privileges are required for installing the robot in user mode.
- D. Administrator privileges are required for installing the robot in service mode.

Answer: D

NEW QUESTION 25

A developer has created the following workflow:



Based on the exhibit, which output is produced in the Output panel?

- A. World Hello
- B. World
- C. Hello World
- D. Hello

Answer: C

Explanation:

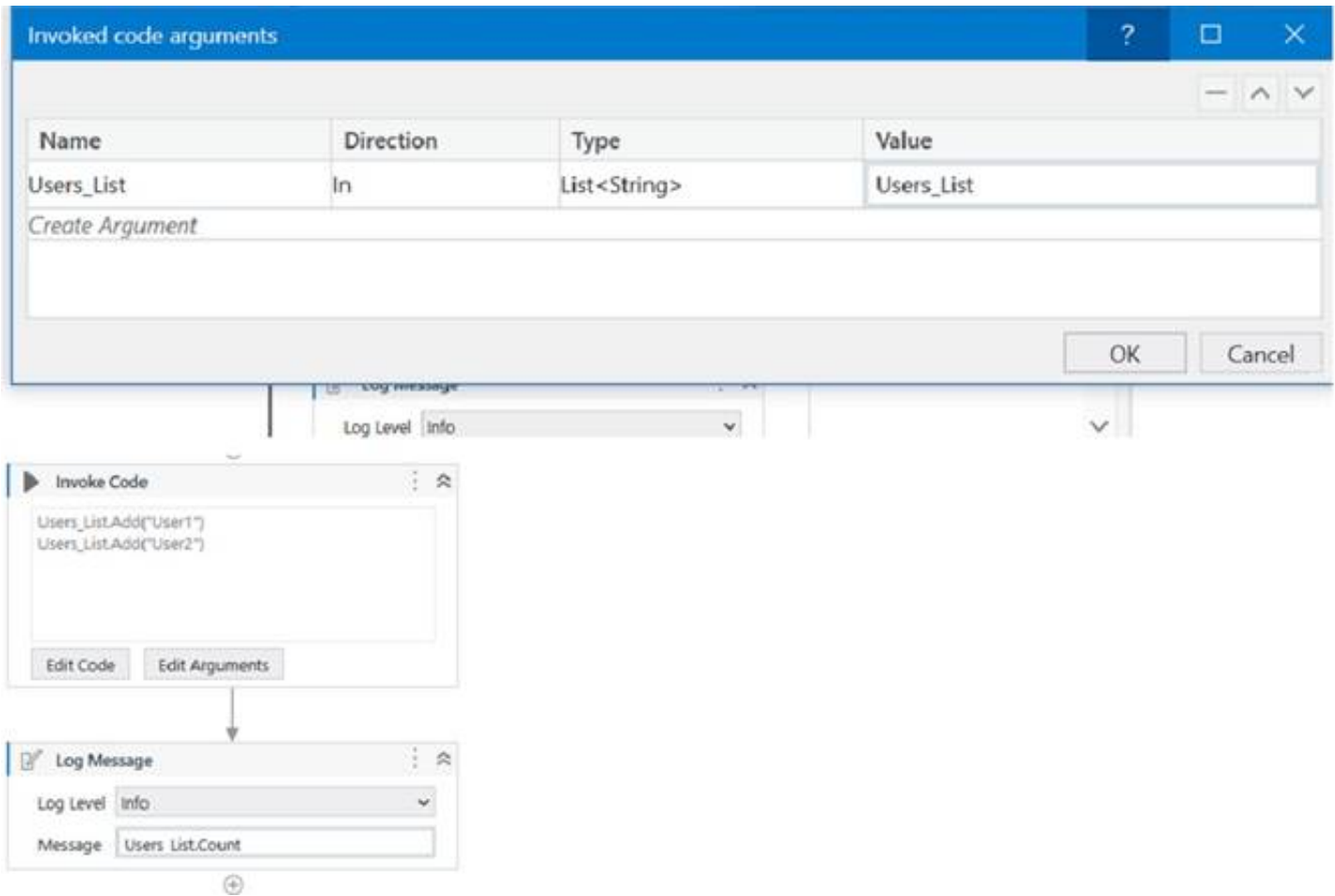
The output panel will display “Hello World” because the workflow is designed to first display “Hello” and then “World” in the output panel. The workflow starts with an Assign activity that initializes the Boolean flag to True. Then, the While activity checks if the flag is True. If it is, the workflow enters the Body section of the While activity. Inside the Body section, the workflow checks if the flag is True. If it is, the workflow enters the Then section of the If activity and displays “Hello” in the output panel. Then, the Assign activity sets the flag to False. Since the flag is now False, the workflow enters the Else section of the If activity and displays “World” in the output panel. Finally, the workflow exits the While activity since the flag is now False.

References:

- ? [Assign Activity - UiPath Activities]
- ? [While Activity - UiPath Activities]
- ? [If Activity - UiPath Activities]
- ? [Write Line Activity - UiPath Activities]

NEW QUESTION 26

A developer has created a variable of type List of Strings named "UsersList", and initialized it with an empty list: "UsersList = new List(Of String)". What is printed in the log message after the following Invoke Code is executed?



- A. 2
- B. Object reference not set to an instance exception is thrown
- C. System Argument Exception is thrown

Answer: A

Explanation:

The code is adding two items to the list, but since the list is initialized as an empty list, the count will be 0.

References:

? Data Manipulation with Lists and Dictionaries in Studio course, Lesson 2: Lists, Topic: Creating Lists

? How to initiate List<String[]>? forum post, Answer by @VishalS

NEW QUESTION 29

DRAG DROP

What is the correct sequence of steps to install a new Activities package in UiPath Studio 2021 10? Instructions: Drag the Description found on the left and drop on the correct Step found on the right.

Description	Step Sequence
Click, All Packages	Step 1
In the Manage Packages window, click Save	Step 2
Click, Manage Packages	Step 3
Search and Install the desired package	Step 4

- A. Mastered
- B. Not Mastered

Answer: A

Explanation:

To install a new Activities package in UiPath Studio 2021 10, you need to follow these steps:

? Click Manage Packages in the ribbon. This will open the Manage

Packages window, where you can browse, install, update, or remove packages from your project.

? In the Manage Packages window, click All Packages in the left panel. This will

display all the available packages from the official UiPath feed, as well as any other feeds that you have configured in the Settings tab.

? Search for the desired package in the search box and select it from the list. You

can also filter the packages by category, compatibility, or source. You can see the package details, such as version, description, dependencies, and release notes, in the right panel.

? Click Install and then Save to complete the installation. The package will be added

to your project dependencies and downloaded to the local cache. You can also choose to install a specific version of the package by clicking on the version number and selecting from the drop-down list.

References:

? Managing Packages

? Installing and Updating Packages

NEW QUESTION 32

When should a static selector be used versus a dynamic selector'?

- A. When a standard selector contains a tag value that changes for each execution
- B. When all the attributes or tags remain the same for each execution
- C. When a standard selector contains an attribute value that changes for each execution
- D. When the selector needs to interact with different types of elements on the same page

Answer: B

Explanation:

A static selector should be used when all the attributes or tags remain the same for each execution. A static selector is a selector that has fixed values for the attributes or tags of the target element. A static selector can reliably identify the target element as long as the element does not change its properties or position on the screen. A static selector is suitable for simple and stable UI elements that have consistent and unique selectors¹. For example, a static selector can be used to click on a button that has the same name and ID every time the automation runs.

References: Static Selectors and Selectors from UiPath documentation.

NEW QUESTION 34

Suppose a developer is working with a 2023 yearly calendar. To expand the calendar into a monthly view, the developer must always click on the 15th day of the current month and add an event.

The selector for the Event Date Element activity in March is presented as follows:

```
<wnd app='applicationframehost.exe' title='Month View - Calendar' />
```

```
<uia cls='Day' name='15 March 2023' />
```

How should the selector be altered to guarantee that it clicks on the 15th of the ongoing month?

- A. `<wnd app='applicationframehost.exe' title='Month View - Calendar' /><uia cls='Day' name='15 * 2023' />`
- B. `<wnd app='applicationframehost.exe' title='Month View - Calendar' /><uia cls='Day' name='15* 20 ?? ' />`
- C. `<wnd app='applicationframehost.exe' title='Month View - Calendar' /><uia cls='Day' name='*15*' />`
- D. `<wnd app='applicationframehost.exe' title='Month View - Calendar' /><uia cls='Day' name='15 ? 20 ?? ' />`

Answer: B

Explanation:

This is the correct option because it uses wildcards to replace the dynamic parts of the selector. Wildcards are symbols that enable you to replace zero or multiple characters in a string. They are useful when dealing with attributes that change dynamically in the selector. There are two types of wildcards: asterisk (*) and question mark (?). The asterisk (*) replaces zero or more characters, while the question mark (?) replaces a single character. In this case, the name attribute of the target element changes according to the month, but the day and the year remain constant. Therefore, the selector can be altered by replacing the month name with an asterisk (*) and the last two digits of the year with two question marks (??). This way, the selector will match any element that has the name starting with 15, followed by any characters, followed by 20, followed by any two characters. For example, the selector will match 15 March 2023, 15 April 2023, 15 May 2023, etc. The other options are incorrect because they either do not use wildcards, or they use them incorrectly. Option A does not replace the last two digits of the year, which may change in the future. Option C replaces too many characters with the asterisk (*), which may cause ambiguity or false matches. Option D uses the question mark (?) incorrectly, as it should be used for single characters, not for spaces or multiple characters. References: Selectors With Wildcards

NEW QUESTION 38

Which of the following is a valid area/panel, from the UiPath Studio interface, from where a variable can be created?

- A. Activities Panel
- B. Locals Panel
- C. Data Manager Area
- D. Project Panel

Answer: A

Explanation:

Variables can be created from different areas or panels in the UiPath Studio interface, such as the body of an activity, the properties panel, the expression editor, or the variables panel. However, the activities panel is the only one among the given options that is a valid area for creating variables. The activities panel contains a list of activities that can be dragged and dropped to the designer panel to build workflows. By right-clicking a field in an activity and selecting Create Variable from the context menu, or pressing Ctrl+K, a variable can be created and assigned to that field. The variable's type and scope are automatically determined based on the activity and the container it is part of.

References:

? Create Variables Tutorial in Studio | UiPath

? Studio - Managing Variables - UiPath Documentation Portal

? Managing Variables - UiPath Studio

NEW QUESTION 40

What are the three main components of UiPath Integration Service?

- A. Connectors, API Tokens, Triggers.
- B. Connectors, Connections, Orchestrator.
- C. Connectors, Connections, Triggers.
- D. Activities, Connections, Triggers.

Answer: C

Explanation:

UiPath Integration Service is a feature that enables you to integrate UI and API automation in a unified way. The three main components of UiPath Integration Service are:

? Connectors: These are pre-built or custom components that provide access to

various applications or systems through their APIs. You can use connectors to perform actions or retrieve data from different sources, such as Salesforce, Slack, Google Sheets, etc. (UiPath Integration Service documentation¹)

? Connections: These are configurations that store the authentication and

connection details for each connector. You can create and manage connections in the UiPath Automation Cloud and share them across different folders and processes. (UiPath Integration Service documentation2)

? Triggers: These are rules that define when and how to start a process in

Orchestrator based on events from connectors. You can configure triggers to react to data changes, insertions, deletions, or custom events in the connected applications or systems. (UiPath Integration Service documentation3)

References:

? 1: Integration Service - Connectors - UiPath Documentation Portal.

? 2: Integration Service - Connections - UiPath Documentation Portal.

? 3: Integration Service - Triggers - UiPath Documentation Portal.

NEW QUESTION 44

What distinguishes the Settings sheet from the Assets sheet in the "Config.xlsx" file?

Settings sheet contains Credential Assets stored in Orchestrator. Assets sheet contains hard-coded values.

- A. Settings sheet contains hard-coded value
- B. Assets sheet contains all names of Orchestrator Assets including those of type Credential.
- C. Settings sheet contains only values used for the initialization of application
- D. Assets sheet contains only Credential Assets stored in Orchestrator.
- E. Settings sheet contains hard-coded value
- F. Assets sheet contains all names of Orchestrator Assets except those of type Credential.

Answer: C

Explanation:

The Config.xlsx file is a configuration file that stores the values of various

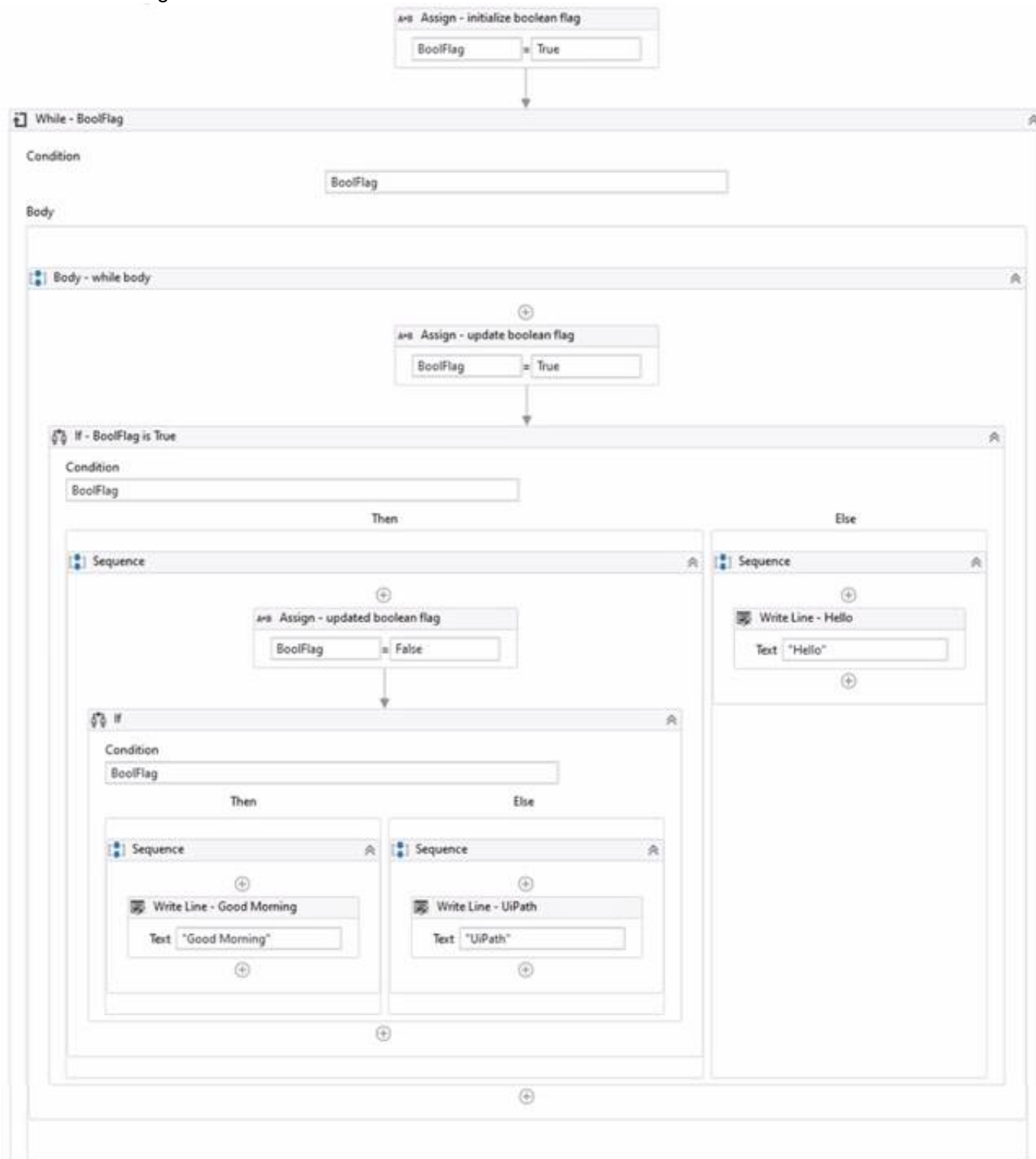
parameters used in the automation process1. It has three sheets: Settings, Constants, and Assets2. The Settings sheet contains hard-coded values that may need to be changed occasionally, such as file paths, file names, timeout values, etc23. The Constants sheet contains values that are universal variables for the process, such as selectors, URLs,

etc23. The Assets sheet contains the names of Orchestrator Assets that are used to store dynamic values that can be accessed across different processes, such as credentials, text, boolean, integer, etc24. However, the Assets sheet does not contain the names of Credential Assets stored in Orchestrator, because they are retrieved using a different activity (Get Credentials) than other assets (Get Asset). Therefore, the Credential Assets are stored in the Settings sheet instead of the Assets sheet.

References: Config.xlsx documentation, Settings, Constants and Assets sheet in config file, Config Dictionary in ReFramework without Excel, Custom Configuration File Reader, [UiPath Framework - Assets VS Settings Sheet of Config.xlsx].

NEW QUESTION 49

Review the following exhibit.



Based on the exhibit, which output is produced in the Output panel?

- A. Hello
- B. Good Morning UiPath
- C. Good Morning
- D. UiPath

Answer: C

Explanation:

Based on the exhibit, the output produced in the Output panel is “Good Morning”. This is because the “If” activity checks if the “BoolFlag” variable is True. If it is True, the “Then” branch is executed, which contains a “Write Line” activity with the text “Good Morning”. If the “BoolFlag” variable is False, the “Else” branch is executed, which contains a “Write Line” activity with the text “UiPath”. Since the “BoolFlag” variable is assigned to True in the previous “Assign” activity, the condition of the “If” activity is satisfied, and the “Then” branch is executed. Therefore, the “Write Line” activity writes “Good Morning” to the Output panel4.
 References: If and How to put a if condition in assign activity? from UiPath documentation and forum.

NEW QUESTION 53

A developer needs to create a repetitive process in the REFramework. Following the best practices, which action(s) should be performed to defend against potential robot crashes such as "out of memory"?

- A. Build a script that compares current CPU usage values to a threshold and clears data as needed.
- B. After every transaction, clear the transaction data, close the applications, and re-open the applications.
- C. All "Invoke Workflow File" activities from the Main.xaml file should be marked with the Isolated option.
- D. Add a "Clear Collection" activity at the beginning of the Process.xaml workflow.

Answer: B

Explanation:

The REFramework is a template that helps developers create robust and reliable automation processes. It follows the best practices of error handling, logging, and retry mechanisms. One of the best practices is to clear the transaction data, close the applications, and re-open the applications after every transaction. This helps to avoid potential robot crashes such as “out of memory” by freeing up the memory and resources used by the applications. It also ensures that the applications are in a consistent state for the next transaction.
 References: REFramework documentation, REFramework best practices

NEW QUESTION 57

DRAG DROP

A developer loaded an existing workflow that uses UI Automation in Google Chrome. The Google Chrome extension has not been installed on the developer's machine How should the developer load the Google Chrome extension from UiPath Studio?
 Instructions: Drag the Description found on the left and drop on the correct Step found on the right.

Description	Step Sequence
Click, "Tools" to see "UiPath Extensions"	Step 1
Navigate to "Home"	Step 2
Click, "Enable extension" in the Google Chrome confirmation pop-up	Step 3
Select "Chrome" and then click, "Install"	Step 4

- A. Mastered
- B. Not Mastered

Answer: A

Explanation:

The developer can load the Google Chrome extension from UiPath Studio by following these steps:
 ? Step 1 = Navigate to Home in UiPath Studio. This is the section where you can create, open, or manage your projects.
 ? Step 2 = Click Tools to see UiPath Extensions. This is the section where you can install or update various extensions for different applications or browsers.
 ? Step 3 = Select Chrome and then click Install. This will launch the Chrome browser and redirect you to the Chrome Web Store page for the UiPath extension.
 ? Step 4 = Click Enable extension in the Google Chrome confirmation pop-up. This will add the UiPath extension to your browser and allow you to use UI automation activities in Chrome.

NEW QUESTION 58

What is the main function of the UiPath Remote Runtime component?

- A. It facilitates the communication between a remote application or desktop and the dedicated UiPath extension, allowing selectors to be natively generated in UiExplorer.
- B. It enables the use of OCR and image recognition activities on remote applications or desktops, without any extensions, allowing selectors to be natively generated in UiExplorer.
- C. It introduces support for headless browser automation, so browser automation doesn't necessarily have to rely on visual elements on screen, such as window frames.

D. It allows automations to run on the user machine, in a different Windows session.

Answer: A

Explanation:

The UiPath Remote Runtime component is a component that enables the communication between a remote application or desktop, such as Citrix Virtual Apps, and the dedicated UiPath extension, such as the UiPath Extension for Citrix or the UiPath Extension for Windows Remote Desktop. It gathers information about the targeted UI elements of the remote applications and sends them to the corresponding extension, so that selectors can be natively generated in UIExplorer1. This way, you can create and manage tasks and exchanges between users and external applications using the authentication process of the API provider2. The UiPath Remote Runtime component is required to establish the connection between an application or desktop server and a corresponding UiPath extension installed on a client machine, without having to rely on OCR and image recognition activities3.

References:

? Studio - About UiPath Remote Runtime - UiPath Documentation Portal.

? Integration Service - Connections - UiPath Documentation Portal.

? UiPath UiPath Runtime - Citrix Ready Marketplace.

NEW QUESTION 61

In a UiPath project that uses State Machines, under what circumstances should the Final State activity be used in the project?

- A. When initiating the first state of a state machine.
- B. When marking the successful completion or termination of a state machine's execution.
- C. When a particular state contains complex conditional logic.
- D. When an intermediary state has multiple possible transitions.

Answer: B

Explanation:

The Final State activity is used to indicate the end of a state machine's execution, either successfully or with an error1. The Final State activity has only one section, Entry, where you can add activities to perform before exiting the state machine2. You can have more than one Final State in a state machine, but you can only create one Initial State3. The Final State activity should be used when you want to mark the completion or termination of a state machine's execution, not when initiating the first state, handling complex logic, or having multiple transitions.

<https://docs.uipath.com/activities/other/latest/workflow/final-state>

NEW QUESTION 63

A developer indicated a UI element for a Get Text activity. The automatically-generated selector is shown below.

```
<html app=, chrome.exe, title='temperature now1' />
```

```
<webctrl tag='table' class=, ui_side_menu' innertext='19°C 66°F' />
```

 Based on best practices, which selector attribute is unreliable?

- A. tag
- B. class
- C. title
- D. innertext

Answer: D

Explanation:

Based on best practices, the selector attribute that is unreliable is innertext. The innertext attribute is the text content of a UI element, such as a table, a button, or a label. The innertext attribute is unreliable because it can change dynamically depending on the data or the state of the UI element. For example, the innertext attribute of a table can change when the table is updated with new values, or the innertext attribute of a button can change when the button is clicked or disabled. Using the innertext attribute in a selector can cause the selector to fail or to identify the wrong UI element if the text content is different from the expected value1. Therefore, the innertext attribute should be avoided or replaced with a more reliable attribute, such as tag, class, or title. The tag attribute is the name of the HTML element, such as table, button, or input. The tag attribute is reliable because it does not change unless the UI element is replaced with a different element. The class attribute is the name of the CSS class that defines the style or the behavior of the UI element, such as ui_side_menu, btn-primary, or form-control. The class attribute is reliable because it does not change unless the UI element is styled or modified differently. The title attribute is the text that appears when the mouse pointer is hovered over the UI element, such as temperature now, submit, or username. The title attribute is reliable because it does not change unless the UI element is renamed or removed2.

References: Selectors with Wildcards and UiPath Selectors from UiPath documentation and forum.

NEW QUESTION 64

A developer is building a process that types data into input fields using the Hardware Events input method. Which property of the Type Into activity should be modified to reduce the pace at which the input string characters are typed into the fields?

- A. Delay before
- B. Alter disabled element
- C. Delay between keys
- D. Delay after

Answer: C

Explanation:

The Delay between keys property of the Type Into activity specifies the time (in milliseconds) between each keystroke when using the Hardware Events input method. Increasing this value can slow down the typing speed and reduce the risk of missing or skipping characters. (UiPath Automation Developer study guide)

References:

? Type Into

? Input Methods

NEW QUESTION 66

What is the recommended approach for handling tabular data when building a REFramework transactional project in UiPath?

- A. Implement custom activities to handle the tabular data.
- B. Convert the tabular data into a string format and store it in a single variable.
- C. Use separate variables to store each column of the tabular data.
- D. Utilize a DataTable variable to store and process the tabular data.

Answer: D

Explanation:

A DataTable variable is a data structure that can store and manipulate tabular data in UiPath. A DataTable variable has rows and columns that correspond to the rows and columns of the tabular data source, such as an Excel or CSV file. A DataTable variable can be used to store the input data for a REFramework transactional project, where each row represents a transaction item. The REFramework template can be modified to use a DataTable variable as the TransactionItem type and to process each row in the GetTransactionData and ProcessTransaction workflows. Using a DataTable variable is the recommended approach for handling tabular data when building a REFramework transactional project in UiPath, because it is efficient, flexible, and easy to use. (UiPath REFramework documentation1)

References:

? 1: Robotic Enterprise Framework Template - UiPath Studio.

NEW QUESTION 68

A developer is building an automation that must interact with a destination remote computer reached by jumping through multiple RDP connections, as described by the following scenario:

- The Robot is installed on Machine A, which connects through RDP to Machine B.
- From Machine B another RDP connection is opened to Machine C, where the automation must be performed.

Which of the following scenarios is appropriate for the developer who wants to use UI Automation activities?

- A. UI Automation can be used and the following are prerequisites: Machine A - install RDP extension.Machine B - no requirement.Machine C - install RemoteRuntime.msi.
- B. UI Automation can be used and the following are prerequisites: Machine A - no requirement.Machine B - no requirement.Machine C - install RemoteRuntime.msi.
- C. UI Automation can be used and the following are prerequisites: Machine A - install RDP extension.Machine B - install RDP extension and RemoteRuntime.ms
- D. Machine C - install RemoteRuntime.msi.
- E. UI Automation can be used and the following are prerequisites: Machine A - install RDP extension.Machine B - install RemoteRuntime.ms
- F. Machine C - install RemoteRuntime.msi.

Answer: C

Explanation:

UI Automation is a feature that enables you to automate the interaction with UI elements on remote machines using native selectors. To use UI Automation in a scenario where multiple RDP connections are involved, you need to install the UiPath Windows Remote Desktop extension on the client machines and the UiPath Remote Runtime component on the destination machine. The extension allows you to identify UI elements on the remote desktop and send keyboard and mouse events to them. The Remote Runtime component enables the communication between the extension and the UiPath Robot service. In this case, Machine A and Machine B are client machines, while Machine C is the destination machine. Therefore, you need to install the RDP extension on Machine A and Machine B, and the Remote Runtime component on Machine C. (UiPath Studio documentation1) References:

? 1: About Native RDP Automation - UiPath Studio.

NEW QUESTION 70

During which stage does an automation developer have the least contribution and responsibility?

- A. In the Discovery and Kickoff, Process Analysis, and Solution Design stages.
- B. In the Development and Unit Testing, Integration and UAT, and Deployment and Hypercare stages.
- C. In the Solution Design, Development and Unit Testing, and Deployment and Hypercare stages.
- D. In the Discovery and Kickoff, Development and Unit Testing, and Deployment and Hypercare stages.

Answer: A

Explanation:

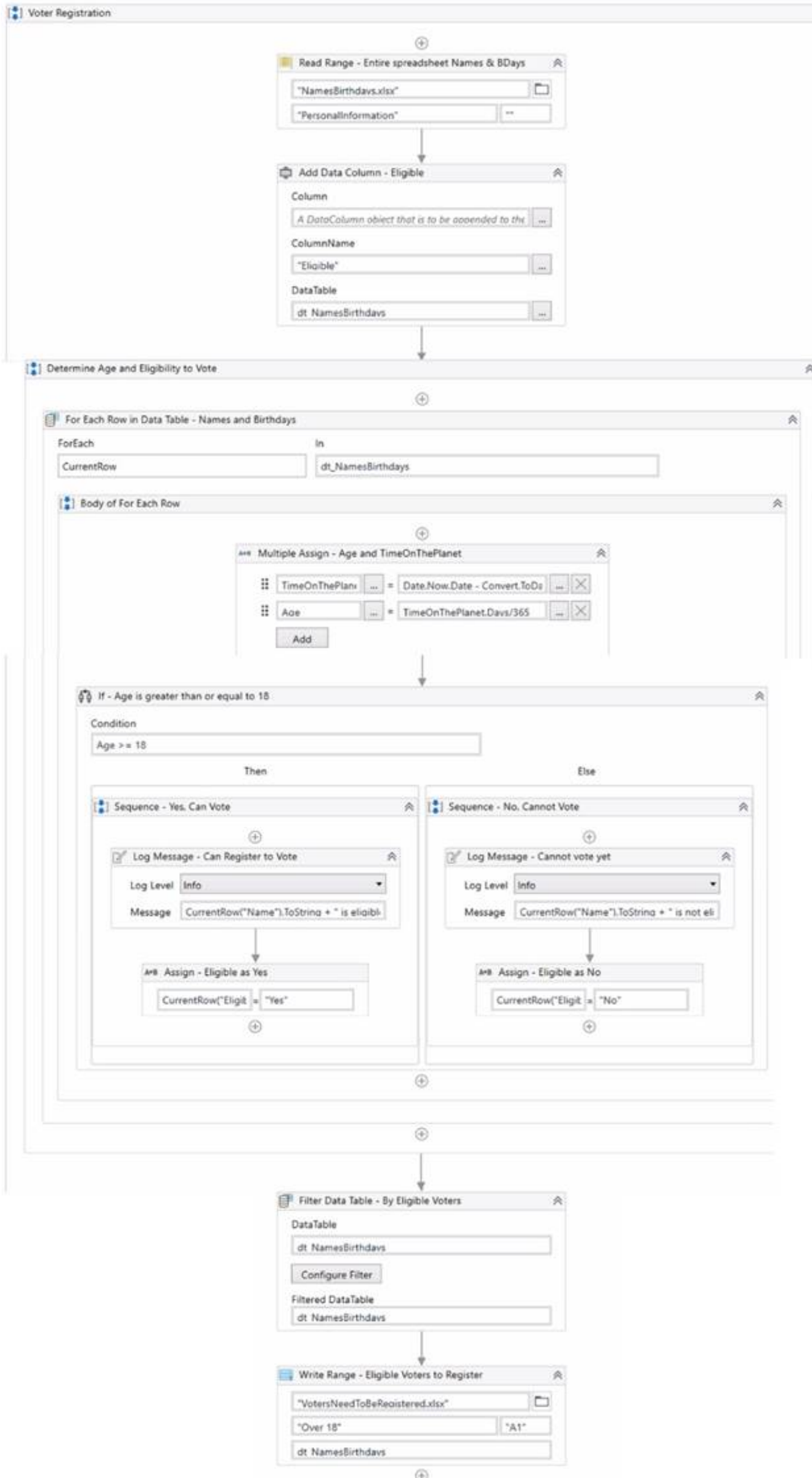
According to the UiPath Automation Implementation Methodology, the automation lifecycle consists of six stages: Discovery and Kickoff, Process Analysis, Solution Design, Development and Unit Testing, Integration and UAT, and Deployment and Hypercare. The automation developer has the least contribution and responsibility in the first three stages, as they are mainly focused on identifying, analyzing, and designing the automation solution. The automation developer's role is more prominent in the last three stages, as they are responsible for developing, testing, deploying, and monitoring the automation projects and components.

References: Automation Lifecycle - Standalone, Automation Developer

NEW QUESTION 71

HOTSPOT

A developer created three variables used in the workflow shown below:



Instructions: Based on best practices, select the correct Scope for each Variable type from the drop-down lists shown in the following exhibit.

Name	Variable type	Scope	Default
Age	Double	<div>▼</div> <div> Sequence – Yes, Can Vote Sequence – No, Cannot Vote Body of For Each Row Determine Age and Eligibility to Vote Voter Registration </div>	Enter a VB expression
TimeOnThePlanet	TimeSpan	<div>▼</div> <div> Sequence – Yes, Can Vote Sequence – No, Cannot Vote Body of For Each Row Determine Age and Eligibility to Vote Voter Registration </div>	Enter a VB expression
dt_NamesBirthdays	DataTable	<div>▼</div> <div> Sequence – Yes, Can Vote Sequence – No, Cannot Vote Body of For Each Row Determine Age and Eligibility to Vote Voter Registration </div>	New System.Data.DataTable

- A. Mastered
 B. Not Mastered

Answer: A

Explanation:

Name = Age Variable type = Double Scope = Body of For Each Row

Name = TimeonThePlanet Variable type = Time Span Scope = Sequence - Yes, Can Vote Name = dt_NamesBirthdays Variable type = DataTable Scope = Voter Registration

The reason for choosing these scopes is to keep the variables in the innermost scope where they are used and to avoid unnecessary clutter and duplication in the Variables panel. You can learn more about variable scope in UiPath from the following sources:

- ? Variable scope - Studio - UiPath Community Forum
- ? How Variable Scope Works in UiPath - Video Tutorials - UiPath Community Forum
- ? How to pass variables as UiPath arguments example - TheServerSide
- ? Best Practices: Select Variables scope - UiPath Community Forum

NEW QUESTION 73

A developer implemented a process using the Robotic Enterprise Framework and an Orchestrator queue. The MaxRetryNumber from the "Config.xlsx" file is set to "1" and the Max # of retries from the Queue settings from Orchestrator is set to "2". At runtime, the first transaction item throws a Business Exception. How many times will the transaction be retried?

- A. The transaction will be retried only one time.
 B. The transaction will not be retried.
 C. The transaction will be retried 2 times.
 D. The transaction will be retried multiple times, until it will be processed successfully.

Answer: B

Explanation:

The Robotic Enterprise Framework (REF) is a template that provides a structured and consistent way to develop automation processes. The REF uses an Orchestrator queue to store and process the transaction items, which are the units of work for the process. The REF also handles different types of exceptions that may occur during the execution of the process, such as system exceptions and business exceptions. A system exception is an error that prevents the normal execution of the process, such as a network failure or an application crash. A business exception is an error that is related to the business logic or rules of the process, such as an invalid input or an incorrect output. The REF has different mechanisms to deal with these exceptions, such as retrying, logging, and updating the status of the transaction items.

The MaxRetryNumber from the "Config.xlsx" file is a parameter that specifies how many times the REF will retry a transaction item when a system exception occurs. The Max # of retries from the Queue settings from Orchestrator is a parameter that specifies how many times Orchestrator will retry a transaction item when it changes to Failed status due to any exception. These two parameters are independent of each other and have different effects on the retry mechanism. In this case, the first transaction item throws a business exception, which means that there is something wrong with the data or the logic of the process. The REF will not retry a transaction item when a business exception occurs, because it assumes that retrying will not solve the problem. Instead, the REF will log the exception, update the status of the transaction item to Failed, and move on to the next transaction item. Orchestrator will also not retry a transaction item when it changes to Failed status due to a business exception, because it respects the decision of the REF. Therefore, the transaction will not be retried at all.

References:

- ? 1: Robotic Enterprise Framework Template - UiPath Studio.

NEW QUESTION 75

A developer wants to extract hidden text from a pdf file. Which output method(s) should be used?

- A. FullText and Native
 B. Native only
 C. OCR
 D. FullText only

Answer: D

Explanation:

To extract hidden text from a pdf file, the output method that should be used is FullText only. The FullText output method is one of the options available in the Read PDF Text activity, which reads all the characters from a specified pdf file and stores them in a string variable³. The FullText output method extracts the text from the pdf file as it is, without keeping the formatting or the position of the text. The FullText output method can also extract the hidden text from the pdf file, which is the text that is not visible on the screen, but can be copied and pasted into another application⁴. For example, the hidden text can be the metadata, comments, or annotations of the pdf file. The FullText output method is suitable for extracting hidden text from a pdf file, as it does not depend on the visibility or

the layout of the text. The other output methods, such as Native or OCR, are not suitable for extracting hidden text from a pdf file, as they rely on the appearance or the position of the text on the screen. The Native output method preserves the formatting and the position of the text, but it cannot extract the text that is not visible or selectable⁵. The OCR output method converts the text from the pdf file into an image and then extracts the text from the image, but it cannot extract the text that is not displayed or recognized by the OCR engine⁶.

References: Read PDF Text, Extracting Hidden Text from PDF, Native, and OCR from UiPath documentation and forum.

NEW QUESTION 78

When using a dynamic selector which data type is supported?

- A. UIElement
- B. Double
- C. String
- D. Data Table

Answer: C

Explanation:

When using a dynamic selector, the data type that is supported is String. A dynamic selector is a selector that uses a variable or an argument as a property for the attribute of the target element. This allows the selector to easily identify the target element based on the value of the variable or argument, and not an exact string, which might change depending on the interactions inside the automation project¹. The variable or argument that is used in the dynamic selector must be of type String, as the attribute values are always strings². For example, a dynamic selector can use a variable named MenuOption to click on different menu items in an application, such as File, Edit, or Format. The variable MenuOption must be a String variable, and its value can be changed at runtime to interact with different elements. A dynamic selector has the following format, where { {Value}} is the name of the variable or argument that holds the property of the element you want to interact with¹:

Dynamic Selector Format <tag attribute = { {Value}} />

References: Dynamic Selectors and How many types of selectors are in UiPath? from UiPath documentation and forum.

NEW QUESTION 80

A developer needs to use the REFramework to automate a business process that involves processing transactions within an Excel table. Each transaction in the table should follow the same steps for processing and queues cannot be used as there is no Orchestrator in the environment. Which variable type is best suited for TransactionItem in this scenario?

- A. System.Data.DataRow
- B. UiPath.Core.QueueItem
- C. System.Dat
- D. DataTable
- E. System.Data.DataRow[]

Answer: A

Explanation:

The REFramework template is a robust and scalable framework for building RPA projects¹. It uses a state machine to handle the different stages of the automation process². One of the states is the Process Transaction state, where the main actions are performed on each transaction item³. A transaction item can be a queue item from Orchestrator, a data row from an Excel file, or any other type of data that needs to be processed. If the transactions are stored in an Excel table, the best variable type for TransactionItem is System.Data.DataRow, as it represents a single row of data in a DataTable. A DataTable is a collection of rows and columns that can be read from or written to an Excel file using the Excel activities. Therefore, option A is correct.

Option B is incorrect because UiPath.Core.QueueItem is a variable type that represents an item from a queue in Orchestrator. If there is no Orchestrator in the environment, queues

cannot be used and QueueItem is not applicable. Option C is incorrect because System.Data.DataTable is a variable type that represents a table of data with rows and columns. A single transaction item cannot be a whole table, but only a row from the table. Option D is incorrect because System.Data.DataRow[] is a variable type that represents an array of data rows. An array is a collection of items of the same type that can be accessed by an index. A single transaction item cannot be an array, but only an element from the array.

References:

- ? The UiPath ReFramework documentation from UiPath
- ? State Machines documentation from UiPath
- ? Process.xaml documentation from UiPath
- ? [TransactionItem Variable] documentation from UiPath
- ? [DataRow Class] documentation from Microsoft
- ? [Excel Activities] documentation from UiPath
- ? [QueueItem Class] documentation from UiPath
- ? [DataRow[] Structure] documentation from Microsoft
- ? [Array Class] documentation from Microsoft

NEW QUESTION 85

What differentiates a List type from an Array type?

- A. List items can be accessed through an index but array items cannot.
- B. An array has a fixed, predefined number of elements while a list has a dynamic number of elements.
- C. A list can hold items of multiple data types at the same time while arrays cannot.
- D. Lists provide the option of looping through data while arrays do not.

Answer: B

Explanation:

Both list and arrays are a collection type of variables that can store multiple values of the same data type. The main difference between them is if their size is fixed or not. Array has a fixed size, meaning that if you create an array containing 3 elements, you can't add more than 3 or reduce its size. List has a dynamic size, meaning that you can add or remove elements as you need. List also provides some methods that can be invoked to perform operations on the elements, such as sorting, reversing, finding, etc. Array does not have such methods, but it is more optimized for arithmetic computations.

References:

- ? Differences between a list and an array - UiPath Community Forum
- ? Array manipulation with UiPath (List, Dictionary, Array) - F-PenIT blog
- ? List Collection ArrayList - Activities - UiPath Community Forum

NEW QUESTION 86

You want to identify a selector in a Type into activity that will be used for a text input field within an application. In order for the Type into activity to execute as expected, how many elements in an application can a selector be valid for at runtime?

- A. 1 element
- B. 2 elements
- C. 3 elements
- D. 5 elements

Answer: A

Explanation:

A selector is a string of characters (XML fragment) that identifies a UI element uniquely within the UI hierarchy. A selector must be valid for only one element in an application, otherwise the Type into activity will not be able to find the correct target for typing the text. If a selector is valid for more than one element, it is considered ambiguous and unreliable. Therefore, the answer is A. 1 element. References: Selectors, Type Into

NEW QUESTION 87

A developer examines a workflow in which filenames are stored within a collection. The collection is initialized with a single filename. When adding a new filename to the collection, which collection variable type will cause an error?

- A. System.Collections.Generi
- B. Dictionary
- C. System.Array
- D. Syste
- E. Dat
- F. DataTable
- G. System.Collections.Generic.List

Answer: B

NEW QUESTION 88

At indication time, the Strict Selector has the following functionalities available:

- A. Open in UiExplorer, Copy to clipboard, Show all matches.
- B. Refresh, Open in UiExplorer, Copy to clipboard.
- C. Accuracy, Open in UiExplorer, Copy to clipboard, Show all matches.
- D. Ignore text, Copy to clipboard, Show all matches.

Answer: C

Explanation:

The Strict Selector option allows you to fine-tune the selector by adjusting the accuracy level and showing all the matches in the UI Explorer. The other options are not available at indication time.

References:

- ? Selectors in UiPath Studio course, Lesson 3: UI Explorer, Topic: Strict Selector
- ? Uipath Associate Certification UiRPA Question Latest course, Section 2: UI Automation, Lecture: Question 10

NEW QUESTION 92

Following UiPath best practices, which project structure is best-suited for complex processes in UiPath Studio?

- A. State Machine
- B. Global Exception Handler
- C. Sequence
- D. Flowchart

Answer: A

Explanation:

According to the UiPath documentation and best practices, the State Machine project structure is best-suited for complex processes that involve multiple states and transitions between them¹². A State Machine workflow can model the behavior of a system in terms of states, such as “Init”, “Get Transaction Data”, “Process Transaction”, and “End Process”, and transitions, such as “Success”, “Business Rule Exception”, or “System Error”. A State Machine workflow can also have entry and exit actions for each state, which are activities that execute when the system enters or exits the state, respectively¹.

A State Machine project structure has several advantages over other project structures, such as Sequence, Flowchart, or Global Exception Handler, for complex processes²:

- ? It can handle complex logic and branching conditions more easily and clearly than a Sequence or a Flowchart, which can become cluttered and hard to maintain for large processes².
- ? It can handle exceptions and errors more efficiently and consistently than a Global Exception Handler, which is a separate workflow that handles all exceptions in a project. A State Machine can have dedicated states and transitions for handling different types of exceptions, such as business rule exceptions or system errors, and can also use retry mechanisms or recovery actions².
- ? It can improve the readability, modularity, and reusability of the workflows, by breaking down the process into smaller and coherent states that can be invoked from the main workflow. This also facilitates collaboration and testing among developers².

Therefore, a State Machine project structure is best-suited for complex processes that involve multiple states and transitions between them.

References:

? State Machine Workflows - Campus Management Corp..
? UiPath Best Practices - Studio - UiPath Community Forum.

NEW QUESTION 93

A developer has defined a variable named "CurrentDate" of type Date Time. Which of the following expressions can be used to show what hour was 12 hours prior to the date from the variable?

- A. CurrentDate.AddHours(-12).Hour
- B. Date Time.SubtractHours(CurrentDate, 12).Hour
- C. CurrentDate.SubtractHours(12).Hour
- D. Date Time.AddHours(CurrentDate, -12).Hour

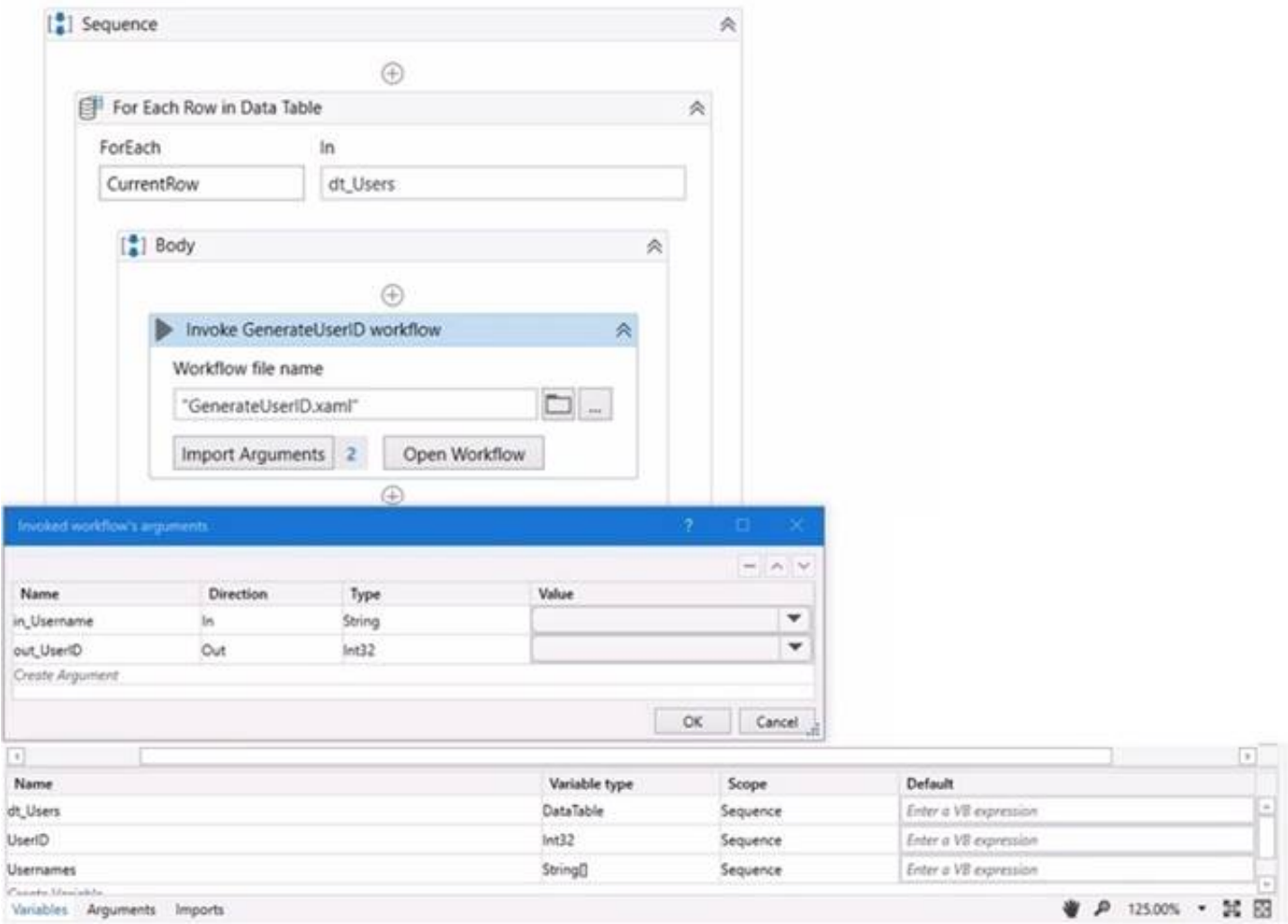
Answer: A

NEW QUESTION 98

HOTSPOT

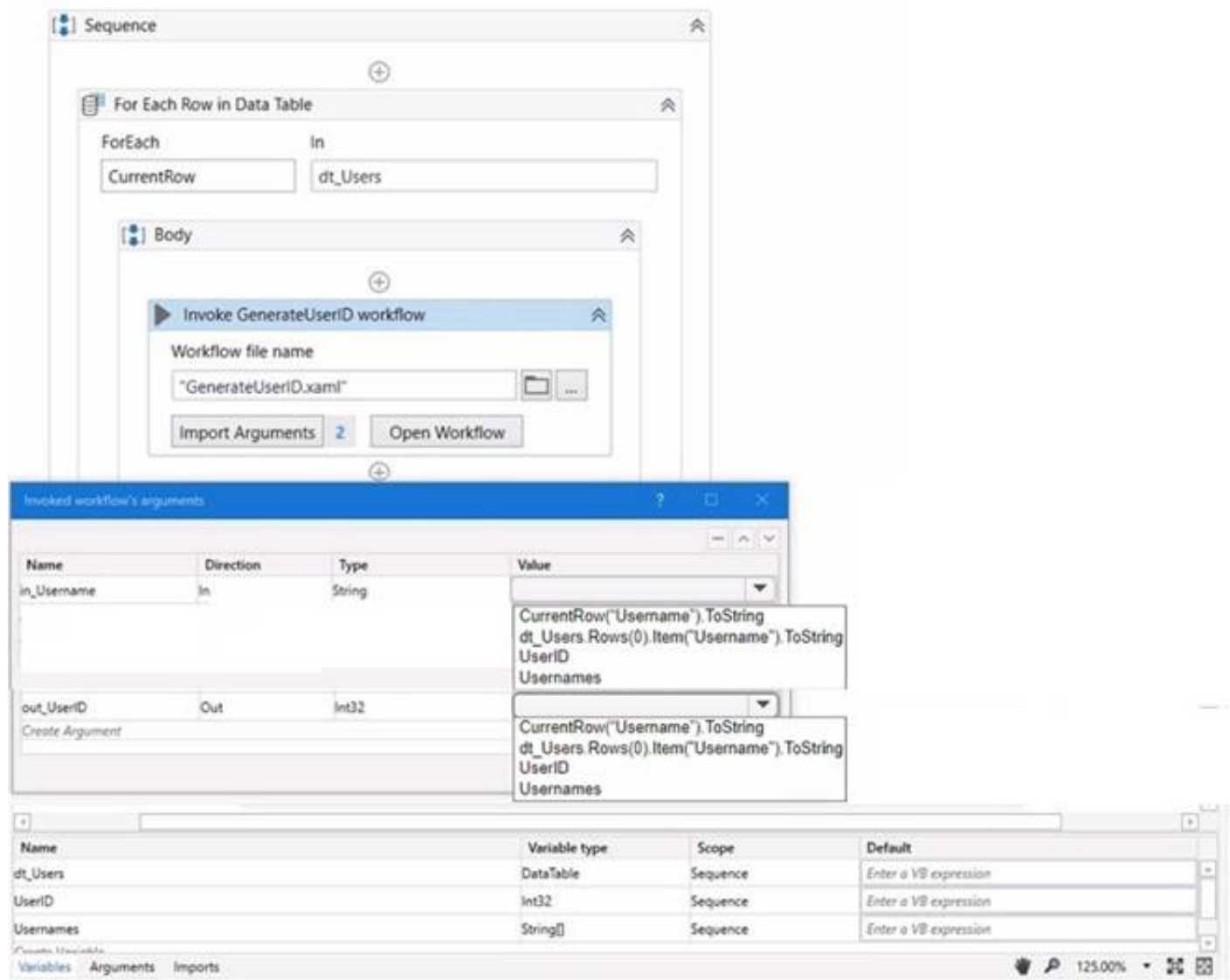
A developer wants to map the arguments that pass data to and from GenerateUserID.xaml to the appropriate values in Main.xaml. The dt_Users datatable variable contains the columns First Name: Last Name Date of Birth and Username.

Instructions: From the Value drop-down lists shown in the following exhibit, select the correct variable that corresponds to each argument.



The screenshot displays the 'Invoke GenerateUserID workflow' activity within a 'For Each Row in Data Table' loop. The 'dt_Users' variable is selected for the 'In' argument. Below, the 'Invoke workflow's arguments' dialog box is open, showing two arguments: 'in_username' (String, In) and 'out_UserID' (Int32, Out). The 'Value' column for 'in_username' has a dropdown menu open, showing 'dt_Users.Username' as the selected value. The 'Value' column for 'out_UserID' has a dropdown menu open, showing 'dt_Users.UserID' as the selected value. At the bottom, a table lists the variables available in the scope:

Name	Variable type	Scope	Default
dt_Users	DataTable	Sequence	Enter a VB expression
UserID	Int32	Sequence	Enter a VB expression
Usernames	String[]	Sequence	Enter a VB expression



- A. Mastered
- B. Not Mastered

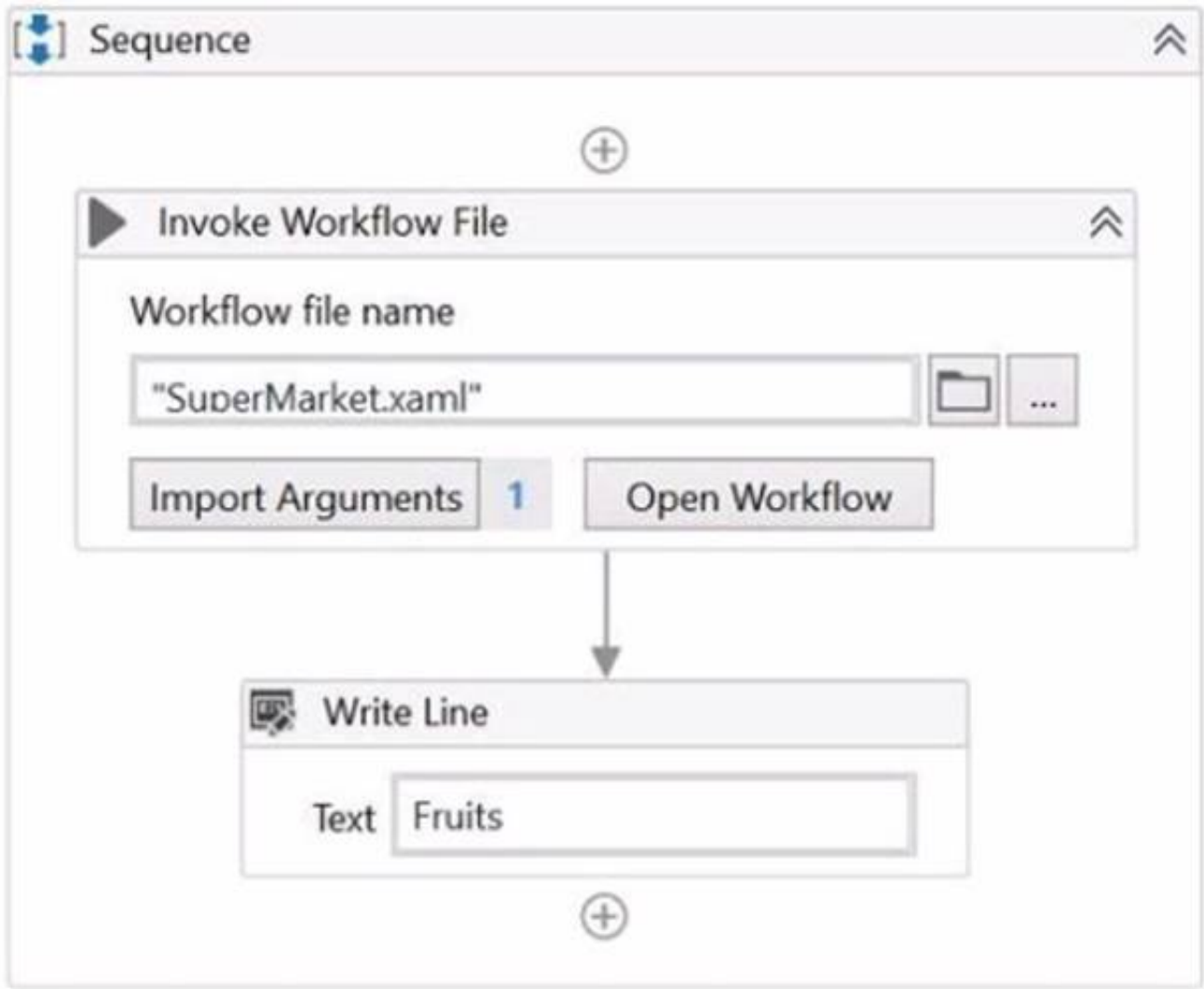
Answer: A

Explanation:

The values to select from the drop-down lists for the in_Username and Out_UserID arguments are:
? in_Username: CurrentRow("Username").ToString
? Out_UserID: UserID
These values will ensure that the in_Username argument receives the value of the Username column from the current row of the dt_Users datatable, and the Out_UserID argument returns the value of the UserID variable that is generated by the GenerateUserID.xaml workflow.

NEW QUESTION 103

A developer has created an automation process that includes:



2. Variables in the Variable panel in the Main.xaml file:

Name	Variable type	Scope	Default
Fruits	String	Sequence	"Apple"
Create Variable			

3. Main.xaml file invokes the SuperMarket workflow using the following argument:

Invoked workflow's arguments			
Name	Direction	Type	Value
out_ShoppingBasket	Out	String	Fruits
Create Argument			
OK Cancel			

4. Detailed SuperMarket sequence and right-hand side expression shown below:

SuperMarket

+

A+B Assign - Inside SuperMarket Sequence

out_ShoppingBasket = out_ShoppingBasket

Expression Editor

Value (InArgument)

1 out_ShoppingBasket + ", Orange"

OK Cancel

Based on the information shown in the exhibits, what is the output of the Write Line activity in the Main xaml file?

- A. Apple
- B. Orange
- C. Apple Orange
- D. Orange Apple

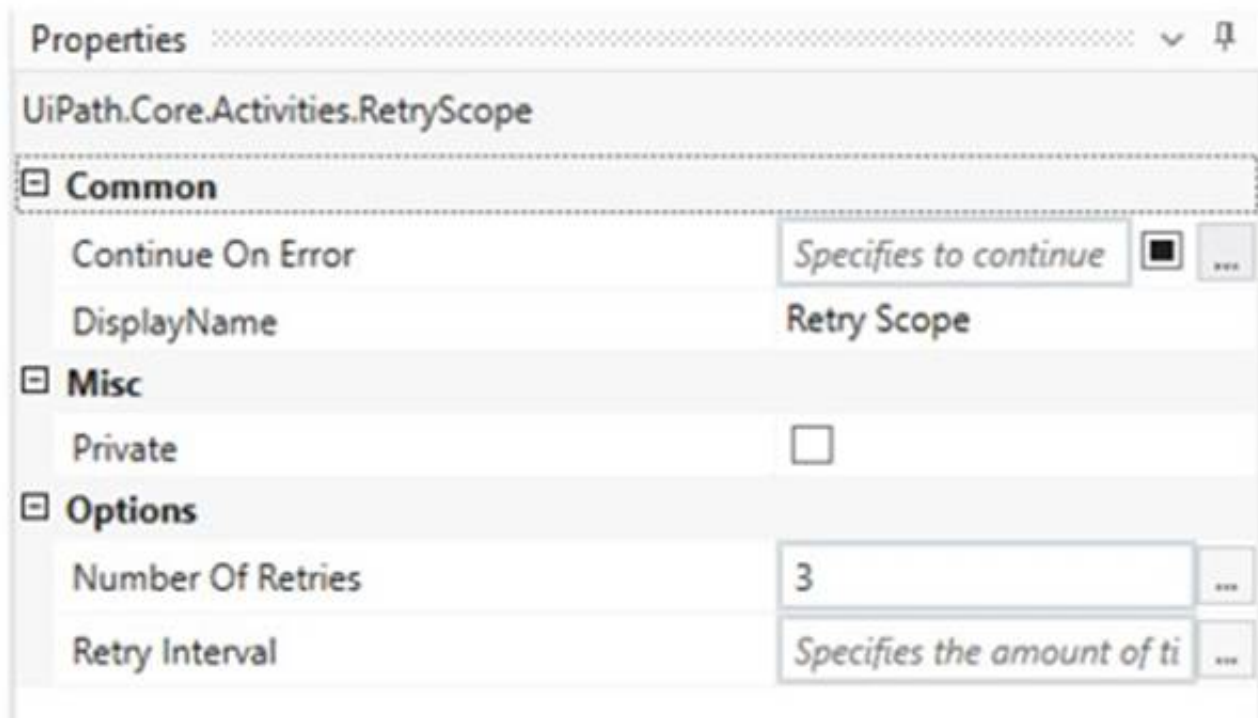
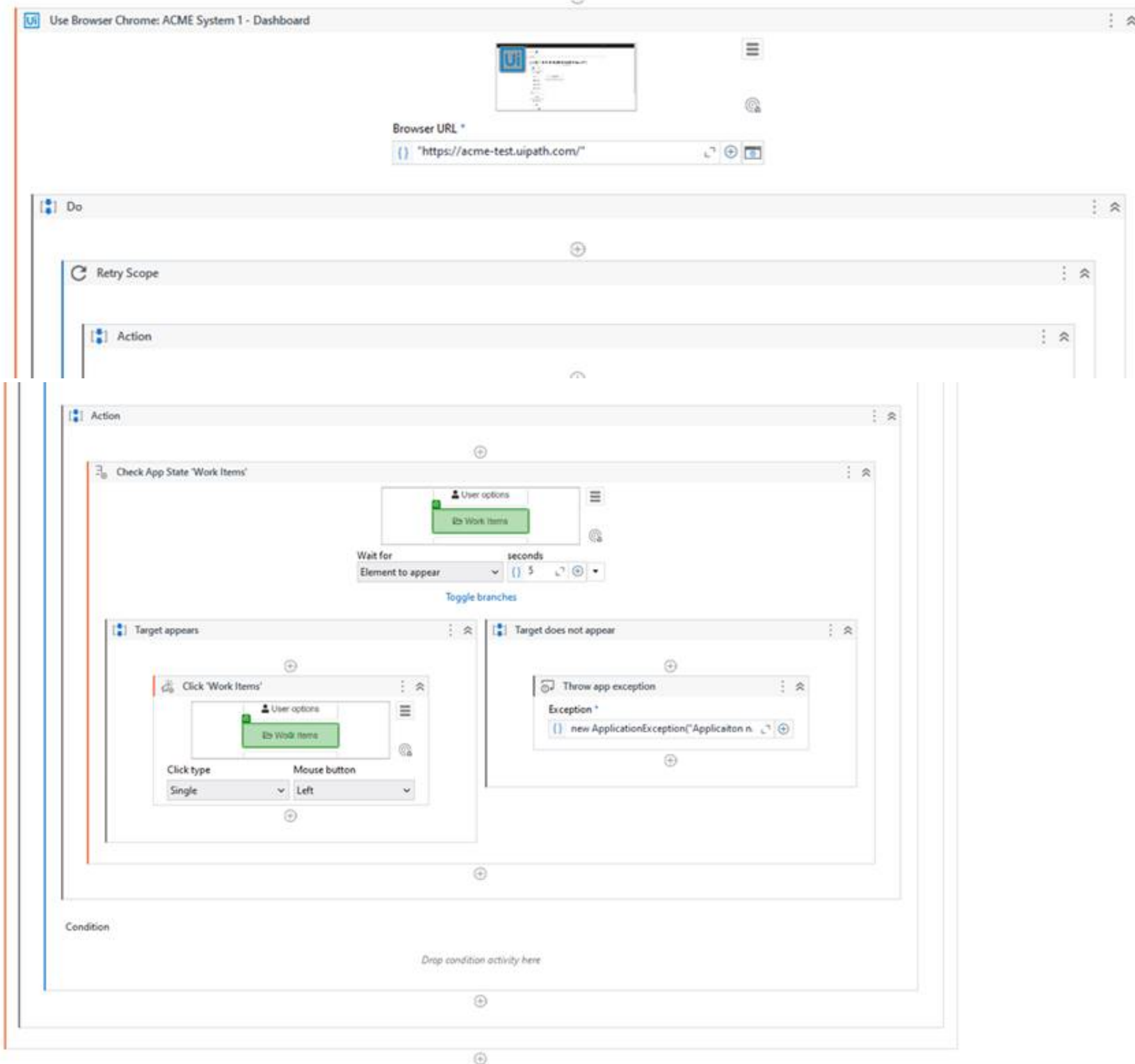
Answer: B

Explanation:

The Write Line activity is used to write a specified text to the Output panel. The text can be a string literal, a variable, or an expression. In this case, the Write Line activity in the Main xaml file has the text "out_ShoppingBasket + ", "Orange"". The out_ShoppingBasket is a variable of type String, which is declared in the Main xaml file and has the default value of "Apple". The variable is passed as an argument to the SuperMarket xaml file, where it is assigned a new value of "Orange". The argument direction is Out, which means that the value of the argument is passed back to the Main xaml file after the execution of the SuperMarket xaml file. Therefore, the value of the out_ShoppingBasket variable in the Main xaml file is changed from "Apple" to "Orange". The expression "out_ShoppingBasket + ", "Orange"" concatenates the value of the out_ShoppingBasket variable with a comma and a space, followed by the string literal "Orange". The result of this expression is "Orange, Orange". The Write Line activity writes this text to the Output panel. Therefore, the answer is B. Orange. References: Write Line, Variables, Arguments

NEW QUESTION 106

What happens after executing the given sequence if the Work Items button appears on the screen after 8 seconds and the Retry Scope activity has the properties as shown in the picture?



- A. The Work Items button is being clicked.
- B. An exception is being thrown.
- C. Nothing happens.
- D. The Work Items button is being highlighted.

Answer: A

Explanation:

The Retry Scope activity is used to retry the execution of a specific part of the automation in case of an error. In this case, the properties of the Retry Scope activity are set to retry 3 times with an interval of 8 seconds. Therefore, if the Work Items button appears on the screen after 8 seconds, the activity will click on the button.

References: [Activities - Retry Scope]

NEW QUESTION 108

A project built using REFramework pulls phone numbers from a database of employees and creates queue items for each one. Following processing, these elements must be added to a financing application. The queue item holding a phone number becomes invalid if a digit is accidentally left out because of a human mistake. As a requirement, queue items that contain partial numbers should not be accepted. What type of error should be thrown according to best practices?

- A. Business Exception
- B. Fatal Exception
- C. Application Exception
- D. System Exception

Answer: A

Explanation:

A business exception is an exception that occurs due to a fault in the business process logic or data, such as invalid input, incorrect format, missing information, etc. Business exceptions are usually predictable and can be handled gracefully by logging the error and moving to the next transaction. In this case, a queue item that contains a partial phone number is an example of a business exception, as it is caused by a human mistake and does not affect the functionality of the application or system. (UiPath Automation Developer study guide)

References:

- ? Business Exception vs System Exception
- ? Exception Handling

NEW QUESTION 109

What are the primary functions of the UiPath Integration Service?

- A. Automates UI design, manages API connections, provides limited activities and events, simplifies automation design.
- B. Enables automation with API integration, manages connections with user-provided authentication, kicks off automations based on application-specific triggers, simplifies automation design with the help of third-party libraries.
- C. Enables automation with a library of connectors, manages connections easily with standardized authentication, kicks off automations with server-side triggers or events, provides curated activities and events, simplifies automation design.
- D. Enables automation with UI components, manages API keys, kicks off automations with client-side triggers, provides curated events.

Answer: C

Explanation:

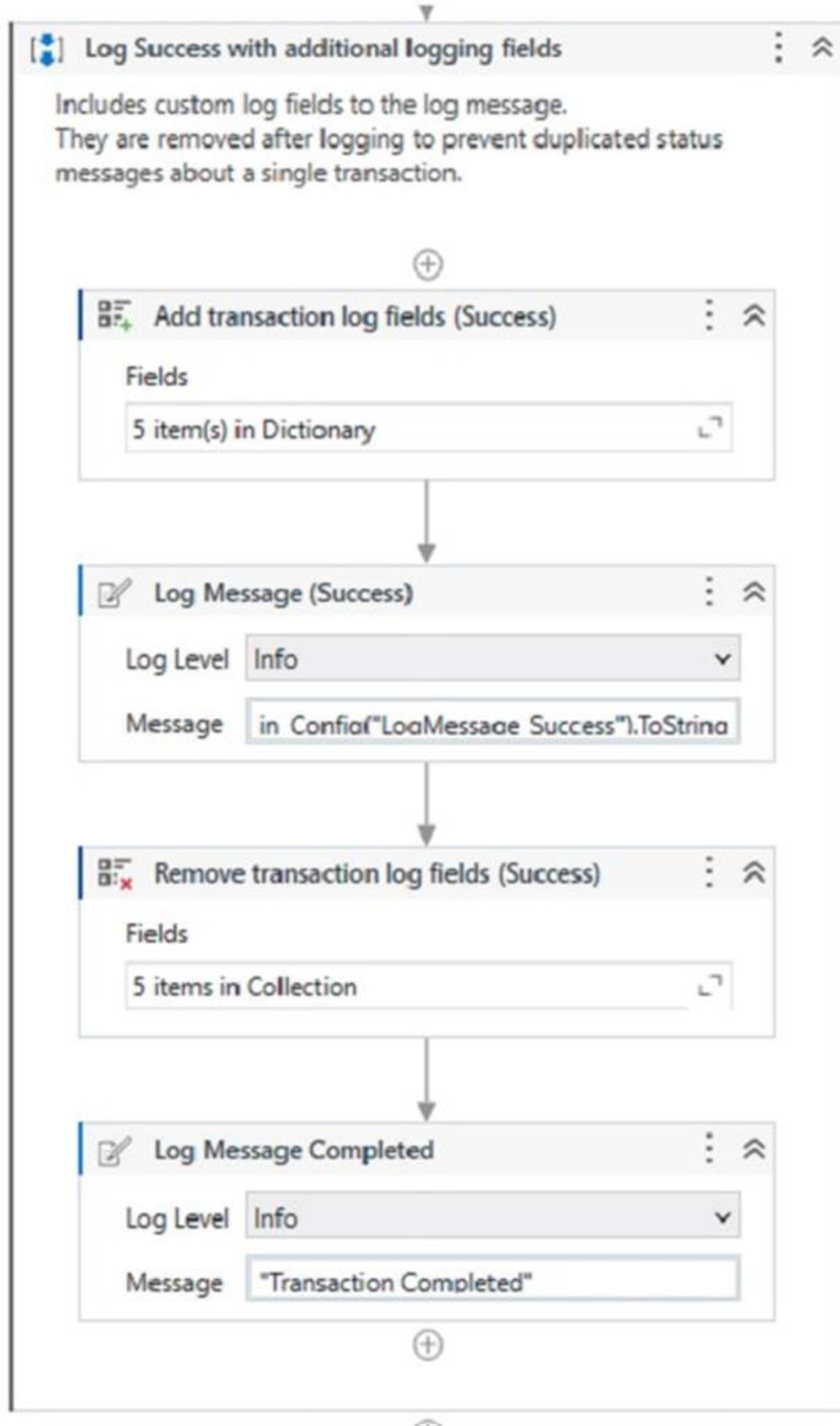
UiPath Integration Service is a new feature that allows developers to create and manage integrations with various applications and systems using UI and API automation. It offers a library of connectors that simplify the authentication and connection process, as well as activities and events that enable data exchange and automation triggering. It also supports server-side triggers that can start automations based on events from other systems. (UiPath Automation Developer study guide)

References:

- ? Introducing UiPath Integration Service
- ? UiPath Integration Service

NEW QUESTION 114

A developer is using the REFramework template to automate a process. In "SetTransactionStatus" file, there is the following sequence of activities, where the last Log Message activity was added by the developer:



The configuration for Add Log Fields and Remove Log Fields activities are shown below: Add transaction log fields (Success)

Dictionary

Add transaction log fields (Success) > Fields (Dictionary<String,InArgument>)

The collection of string arguments to be added to every subsequent log line.

Key	Type	Value
logF_TransactionStatus	String	{ } "Success"
logF_TransactionNumber	String	{ } io_TransactionNumber.ToSti
logF_TransactionID	String	{ } in_TransactionID
logF_TransactionField1	String	{ } in_TransactionField1
logF_TransactionField2	String	{ } in_TransactionField2

Add entry Save Cancel

Remove transaction log fields (Success)

Collection Builder

Remove transaction log fields (Success) > Fields (List<InArgument<String>>)

The collection of string arguments to be removed from subsequent log lines.

{ } "logF_TransactionStatus"
{ } "logF_TransactionNumber"
{ } "logF_TransactionID"
{ } "logF_TransactionField1"
{ } "logF_TransactionField2"

The developer runs the process and notices the argument values for the first transaction are:

in_TransactionID = "07/18/2023 10:27:29" io_TransactionNumber = 1 in_TransactionField1 = "UI235-80" in_TransactionField2 = "Update Request"

Which of the following Log Message Details will be displayed when executing the activity Log Message Completed for the first transaction, considering it is successful?

A.

```
"message": "Transaction Completed", "level": "Information",
"logType": "User",
"timestamp": "10:30:19", "fileName": "SetTransactionStatus", "processVersion": "1.0.0",
"jobId": "59325301-680a-4d55-a81b-56ca1f369c12",
"robotName": "test.robot", "machineId": 0, "logF_TransactionField2": "" "logF_TransactionStatus": "logF_TransactionID"; "",
"logF_BusinessProcessName": "Framework", "logF_TransactionNumber": "" "logF_TransactionField1":
}
```

B.

```
"message": "Transaction Completed", "level": "Information",
"logType": "User",
"timestamp": "10:30:19", "fileName": "SetTransactionStatus", "processVersion": "1.0.0",
"jobId": "cb865477-35f8-4c0a-93e9-e4f4246223f2",
"robotName": "test.robot", "machineId": 0,
"logF_TransactionField2": "Update Request", "logF_TransactionID": "07/18/2023 10:27:29", "logF_BusinessProcessName": "Framework",
"logF_TransactionNumber": "1", "logF_TransactionField1": "UI235-80", "logF_TransactionStatus": "Success"
```

A. "message": "Transaction Completed", "level": "Information", "logType": "User", "timestamp": "10:30:19", "fileName": "SetTransactionStatus", "processVersion": "1.0.0", "jobId": "f8a36a46-8ebc-40df-8f71-26b39087ebee", "robotName": "test.robot", "machineId": 0, "logF_BusinessProcessName": "Framework"}D."message": "Transaction Completed", "level": "Information", "logType": "User", "timestamp": "10:30:19", "fileName": "SetTransactionStatus", "processVersion": "1.0.0", "jobId": "59325301-680a-4d55-a81b-56ca1f369c12", "robotName": "test.robot", "machineId": 0, "logF_TransactionField2": empty, "logF_TransactionStatus": empty, "logF_TransactionID": empty, "logF_BusinessProcessName": "Framework", "logF_TransactionNumber": empty, "logF_TransactionField1": empty}

Answer: B

Explanation:

The Log Message activity is used to write a diagnostic message at a specified level to the output panel, the log file, and Orchestrator1. The message can include custom log fields that are added by the Add Log Fields activity and removed by the Remove Log Fields activity2. In this case, the developer has added six log fields in the Add transaction log fields (Success) sequence and removed three of them in the Remove transaction log fields sequence. Therefore, the remaining three log fields (logF_TransactionField2, logF_TransactionID, and logF_TransactionStatus) will be displayed along with the default log fields (message, level, logType, timestamp, fileName, processVersion, jobId, robotName, and machineId) when executing the Log Message Completed activity. The values of the log

fields will be taken from the corresponding arguments of the Set Transaction Status activity.

References:

? Add Log Fields activity documentation from UiPath

? Remove Log Fields activity documentation from UiPath

? Log Message activity documentation from UiPath

NEW QUESTION 115

Which argument name follows UiPath best practices for argument naming conventions?

A. ioUpdatedsum

B. in_argument1

C. dt_outputrovvs

D. out_ConfirmationNumber

Answer: D

Explanation:

The argument name that follows UiPath best practices for argument naming conventions is out_ConfirmationNumber. According to the UiPath best practices, the argument name should be meaningful and include an indication of its type and direction. The type can be inferred from the argument's data type, such as String, Int32, DataTable, etc. The direction can be one of the following: in, out, or io. The in direction means that the argument can only be used within the given project. The out direction means that the argument can be used to pass data outside of a given project. The io direction means that the argument can be used both within and outside of a given project⁴. The argument name should also follow the camel case convention, which specifies that each word in the middle of the argument name begins with a capital letter, with no intervening spaces or punctuation⁵. For example, the argument name out_ConfirmationNumber follows these best practices, as it indicates that the argument is of out direction, and that it stores a confirmation number value. The other argument names do not follow the best practices, as they either use incorrect or inconsistent prefixes, or do not use camel case convention. References: ST-NMG-002 - Arguments Naming Convention and Variables, arguments and workflows naming - best practice from UiPath documentation and forum.

NEW QUESTION 116

Which Scraping method should be used for the Get Text activity to capture hidden text from an application?

A. Text attribute

B. Default

C. Native

D. Full text

Answer: D

Explanation:

The Get Text activity is used to extract the text value of a specified UI element. It does not use any of the scraping methods by default, but it can be configured to use the Full Text method in the Properties panel. The Full Text method is able to capture hidden text from an application, as well as the entire visible text and editable text. The Full Text method uses an internal OCR engine that works with most applications and languages.

References:

? Get Text activity documentation from UiPath

? Screen Scraping Methods documentation from UiPath

? Text scrapping forum post from UiPath Community

? How to: Scrape the Whole Text, Including Hidden Elements from a Terminal Window article from UiPath Knowledge Base

NEW QUESTION 121

A developer configured the properties for a Click activity on an element inside a web page as shown in the following exhibit.

Properties

UiPath.UIAutomationNext.Activities.NClick

Common

Continue on error: Continue executing the activities in the automat ☐ ...

Delay after: Delay (in seconds) after this activity is completed, be ...

Delay before: Delay (in seconds) to wait before executing this activ ...

DisplayName: Click

Timeout: The amount of time (in seconds) to wait for the ...

Input

Click type: NClickType.Single

Cursor motion type: Specifies the type of motion performed by the m

Mouse button: NMouseButton.Left

Target

Click offset: (null)

Fuzzy selector: "<webctrl aria-role='button' type='submit' tag='IN ...

Native text: Enter a VB expression

Responsive websites: ☐

Strict selector: "<webctrl aria-role='button' css-selector='body&g ...

Targeting methods: Strict selector

Visibility check: Interactive (for Fuzzy Selector)

Wait for page load: NWaitForReady.Interactive

Window selector (Application instance): "<html app='msedge.exe' title='*' />"

Verify execution: (null)

Input/Output Element

Input element: The Input UI Element defines the screen element tha ...

Output element: Output a UI Element to use in other activities as an ...

Misc

Private: ☐

Options

Alter disabled element: When selected, the activity executes the action e ☐ ...

Input mode: Same as App/Browser

Key modifiers: NKeyModifiers.None

An animation on the web page never completely loads but the element indicated in the Click activity does load within the specified timeout duration. What occurs when this Click activity executes?

- A. Element is clicked once the element is fully loaded.
- B. Timeout error occurs without clicking on the element.
- C. Waits 10 seconds before clicking on the element.
- D. Continues to the next activity after 30 seconds without clicking on the element.

Answer: A

Explanation:

The Click activity is used to simulate a mouse click on a specified UI element, such as a button or a link¹. It has several properties that can be configured to customize its behavior, such as the input method, the click type, the timeout, and the wait for ready¹.

? The input method determines how the click is performed. It can be Default, Simulate, or Window Messages. The Default method uses the hardware driver to simulate the click, and it requires the target element to be visible and in focus. The Simulate and Window Messages methods use the technology of the target application to inject the click, and they can work in the background, even if the target element is hidden or minimized².

? The click type determines which mouse button is used for the click. It can be Single, Double, Down, or Up. The Single and Double types perform a single or double click using the left mouse button. The Down and Up types perform a press or release action using any mouse button¹.

? The timeout determines how long the activity waits for the target element to appear before throwing an error. It is measured in milliseconds, and it has a default value of 30000 (30 seconds). If the timeout is exceeded, the activity fails with a TimeoutException¹.

? The wait for ready determines when the activity executes. It can be None, Interactive, or Complete. The None option executes the activity immediately. The Interactive option executes the activity after the target element is loaded. The Complete option executes the activity after the target application is loaded¹.

In your case, you have configured the properties for the Click activity as follows:

? Input method: Simulate

? Click type: Single

? Timeout: 30000

? Wait for ready: Complete

This means that the Click activity will use the Simulate method to perform a single click on the target element in the background, after waiting for 30 seconds or until the target application is fully loaded, whichever comes first.

Since you have mentioned that an animation on the web page never completely loads but the element indicated in the Click activity does load within the specified timeout duration, what occurs when this Click activity executes is:

Element is clicked once the element is fully loaded.

This is because the Simulate method can work in the background, even if the web page is hidden or minimized, and it does not depend on the animation to complete. The Complete option for wait for ready ensures that the Click activity waits until the target element is loaded before clicking on it. The timeout value of 30000 does not affect this scenario, because it is not exceeded.

Therefore, option A is correct.

References:

? Click - UiPath Documentation Portal.

? What are different Input methods in UiPath - UiPath Community Forum.

NEW QUESTION 123

.....

Thank You for Trying Our Product

We offer two products:

1st - We have Practice Tests Software with Actual Exam Questions

2nd - Questions and Answers in PDF Format

UiPath-ADAv1 Practice Exam Features:

- * UiPath-ADAv1 Questions and Answers Updated Frequently
- * UiPath-ADAv1 Practice Questions Verified by Expert Senior Certified Staff
- * UiPath-ADAv1 Most Realistic Questions that Guarantee you a Pass on Your FirstTry
- * UiPath-ADAv1 Practice Test Questions in Multiple Choice Formats and Updatesfor 1 Year

100% Actual & Verified — Instant Download, Please Click
[Order The UiPath-ADAv1 Practice Test Here](#)