

Exam Questions NSE7_EFW-7.2

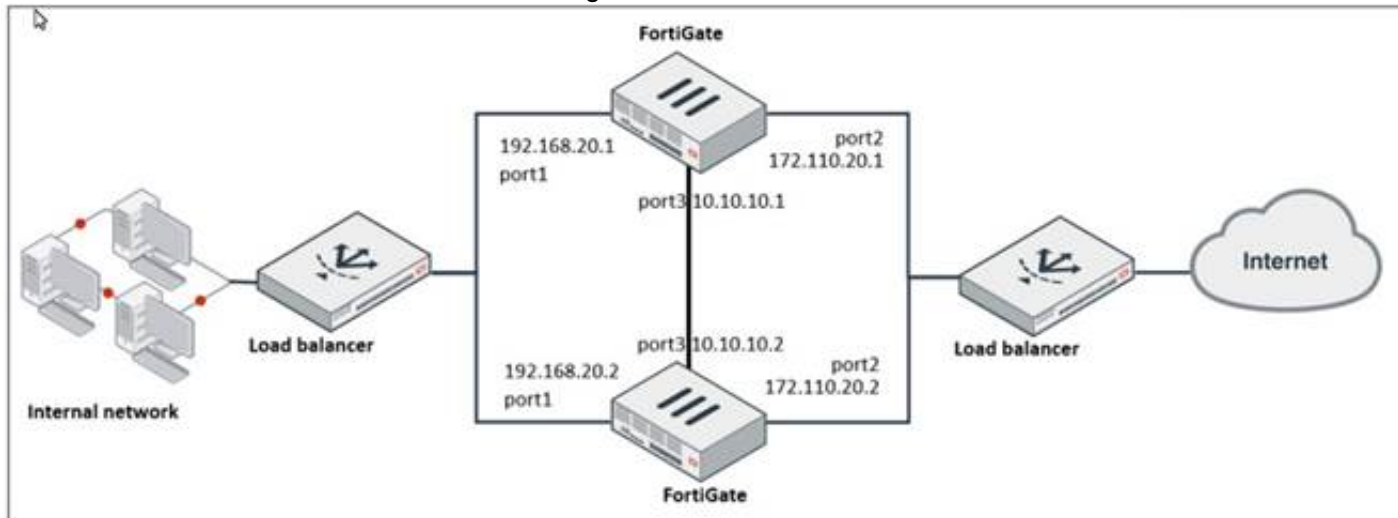
Fortinet NSE 7 - Enterprise Firewall 7.2

https://www.2passeasy.com/dumps/NSE7_EFW-7.2/



NEW QUESTION 1

Refer to the exhibit, which shows a network diagram.



Which protocol should you use to configure the FortiGate cluster?

- A. FGCP in active-passive mode
- B. OFGSP
- C. VRRP
- D. FGCP in active-active mode

Answer: A

Explanation:

Given the network diagram and the presence of two FortiGate devices, the Fortinet Gate Clustering Protocol (FGCP) in active-passive mode is the most appropriate for setting up a FortiGate cluster. FGCP supports high availability configurations and is designed to allow one FortiGate to seamlessly take over if the other fails, providing continuous network availability. This is supported by Fortinet documentation for high availability configurations using FGCP.

NEW QUESTION 2

Which two statements about bfd are true? (Choose two)

- A. It can support neighbor only over the next hop in BGP
- B. You can disable it at the protocol level
- C. It works for OSPF and BGP
- D. You must configure n globally only

Answer: BC

Explanation:

BFD (Bidirectional Forwarding Detection) is a protocol that can quickly detect failures in the forwarding path between two adjacent devices. You can disable BFD at the protocol level by using the "set bfd disable" command under the OSPF or BGP configuration. BFD works for both OSPF and BGP protocols, as well as static routes and SD-WAN rules. References := BFD | FortiGate / FortiOS 7.2.0 - Fortinet Document Library, section "BFD".

NEW QUESTION 3

Refer to the exhibit, which shows a custom signature.



Which two modifications must you apply to the configuration of this custom signature so that you can save it on FortiGate? (Choose two.)

- A. Add severity.
- B. Add attack_id.
- C. Ensure that the header syntax is F-SBID.
- D. Start options with --.

Answer: AB

Explanation:

For a custom signature to be valid and savable on a FortiGate device, it must include certain mandatory fields. Severity is used to specify the level of threat that the signature represents, and attack_id is a unique identifier for the signature. Without these, the signature would not be complete and could not be correctly utilized by the FortiGate's Intrusion Prevention System (IPS).

NEW QUESTION 4

Which two statements about the neighbor-group command are true? (Choose two.)

- A. You can configure it on the GUI.

- B. It applies common settings in an OSPF area.
- C. It is combined with the neighbor-range parameter.
- D. You can apply it in Internal BGP (IBGP) and External BGP (EBGP).

Answer: BD

Explanation:

The neighbor-group command in FortiOS allows for the application of common settings to a group of neighbors in OSPF, and can also be used to simplify configuration by applying common settings to both IBGP and EBGP neighbors. This grouping functionality is a part of the FortiOS CLI and is documented in the Fortinet CLI reference.

NEW QUESTION 5

Which two statements about the Security fabric are true? (Choose two.)

- A. FortiGate uses the FortiTelemetry protocol to communicate with FortiAnalyzer.
- B. Only the root FortiGate sends logs to FortiAnalyzer
- C. Only FortiGate devices with configuration-sync receive and synchronize global CMDDB objects that the root FortiGate sends
- D. Only the root FortiGate collects network topology information and forwards it to FortiAnalyzer

Answer: BC

Explanation:

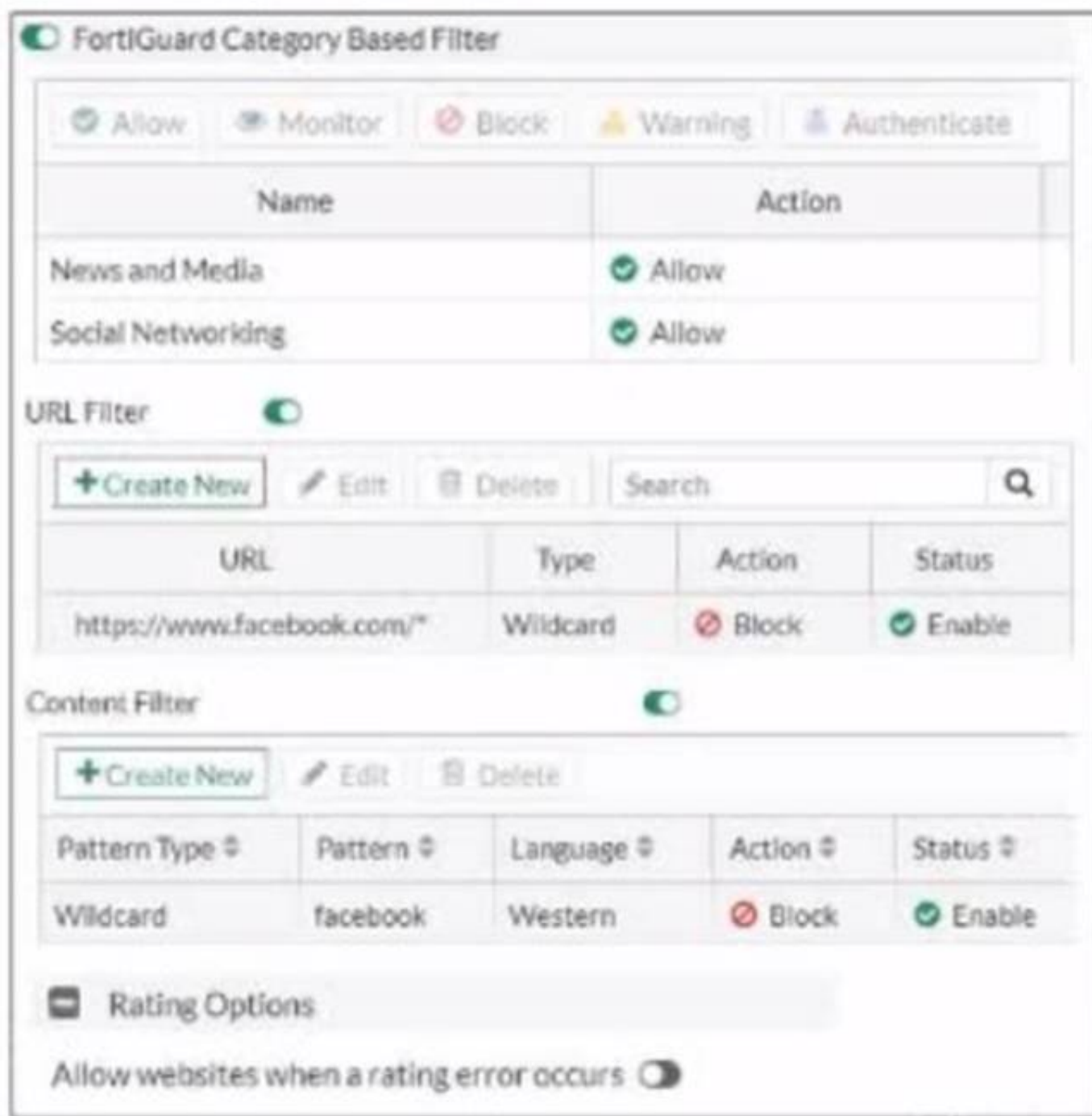
In the Security Fabric, only the root FortiGate sends logs to FortiAnalyzer (B). Additionally, only FortiGate devices with configuration-sync enabled receive and synchronize global Central Management Database (CMDDB) objects that the root FortiGate sends (C). FortiGate uses the FortiTelemetry protocol to communicate with other FortiGates, not FortiAnalyzer (A). The last option (D) is incorrect as all FortiGates can collect and forward network topology information to FortiAnalyzer.

References:

? FortiOS Handbook - Security Fabric

NEW QUESTION 6

Exhibit.



The screenshot shows the FortiGuard Category Based Filter configuration page. At the top, there is a toggle switch for 'FortiGuard Category Based Filter' which is turned on. Below this, there are five buttons: 'Allow', 'Monitor', 'Block', 'Warning', and 'Authenticate'. A table lists categories and their actions:

Name	Action
News and Media	Allow
Social Networking	Allow

Below the table, there is a section for 'URL Filter' with a toggle switch turned on. It includes buttons for '+ Create New', 'Edit', and 'Delete', along with a search bar. A table lists URL filters:

URL	Type	Action	Status
https://www.facebook.com/*	Wildcard	Block	Enable

Below the URL Filter section, there is a section for 'Content Filter' with a toggle switch turned on. It includes buttons for '+ Create New', 'Edit', and 'Delete'. A table lists content filters:

Pattern Type	Pattern	Language	Action	Status
Wildcard	facebook	Western	Block	Enable

At the bottom, there is a section for 'Rating Options' with a toggle switch for 'Allow websites when a rating error occurs' which is turned off.

Refer to the exhibit, which shows a partial web filter profile configuration

What can you conclude from this configuration about access to www.facebook.com, which is categorized as Social Networking?

- A. The access is blocked based on the Content Filter configuration
- B. The access is allowed based on the FortiGuard Category Based Filter configuration
- C. The access is blocked based on the URL Filter configuration
- D. The access is blocked if the local or the public FortiGuard server does not reply

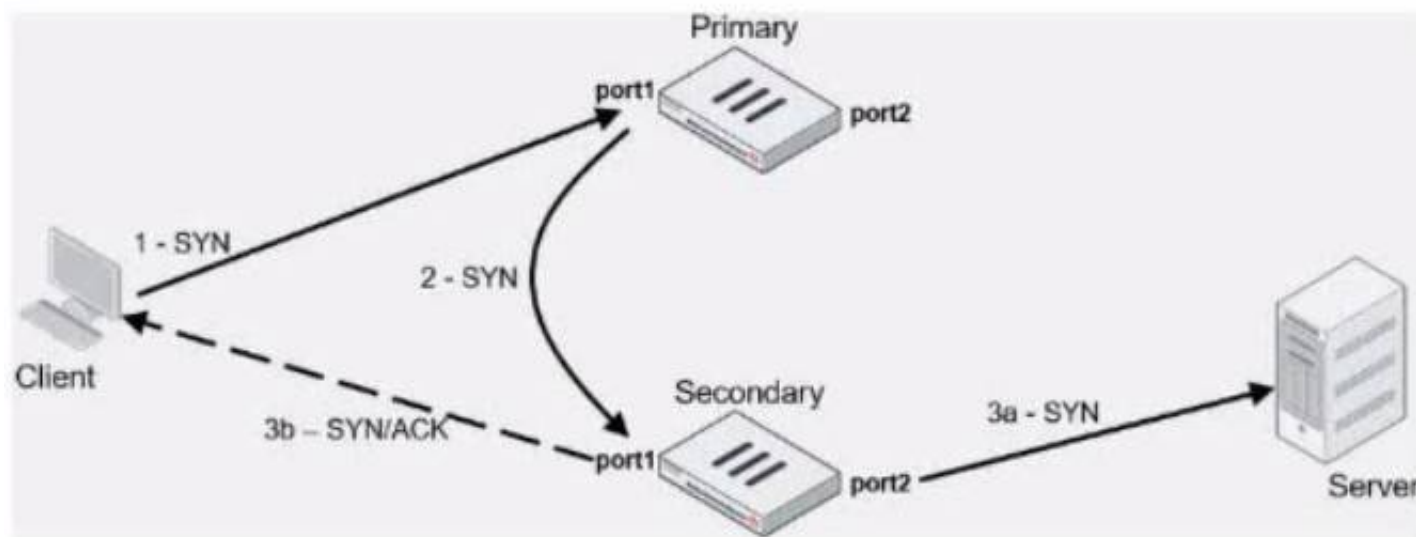
Answer: C

Explanation:

The access to www.facebook.com is blocked based on the URL Filter configuration. In the exhibit, it shows that the URL “www.facebook.com” is specifically set to “Block” under the URL Filter section1. References := Fortigate: How to configure Web Filter function on Fortigate, Web filter | FortiGate / FortiOS 7.0.2 | Fortinet Document Library, FortiGate HTTPS web URL filtering ... - Fortinet ... - Fortinet Community

NEW QUESTION 7

Exhibit.



Refer to the exhibit, which contains an active-active load balancing scenario.

During the traffic flow the primary FortiGate forwards the SYN packet to the secondary FortiGate.

What is the destination MAC address or addresses when packets are forwarded from the primary FortiGate to the secondary FortiGate?

- A. Secondary physical MAC port1
- B. Secondary virtual MAC port1
- C. Secondary virtual MAC port1 then physical MAC port1
- D. Secondary physical MAC port2 then virtual MAC port2

Answer: A


Explanation:

In an active-active load balancing scenario, when the primary FortiGate forwards the SYN packet to the secondary FortiGate, the destination MAC address would be the secondary's physical MAC on port1, as the packet is being sent over the network and the physical MAC is used for layer 2 transmissions.


NEW QUESTION 8

Refer to the exhibits, which show the configurations of two address objects from the same FortiGate.

Engineering address object

Name	Engineering
Color	 <input type="button" value="Change"/>
Type	Subnet
IP/Netmask	192.168.0.0 255.255.255.0
Interface	<input type="checkbox"/> any
Static route configuration	<input type="checkbox"/>
Comments	<input type="text" value="Write a comment..."/> 0/255
<input type="button" value="OK"/> <input type="button" value="Cancel"/>	

Finance address object

Name	Finance
Color	 <input type="button" value="Change"/>
Type	Subnet
IP/Netmask	192.168.1.0 255.255.255.0
Interface	<input type="checkbox"/> any
Static route configuration	<input type="checkbox"/>
Comments	<input type="text" value="Write a comment..."/> 0/255
<input type="button" value="Return"/>	

Why can you modify the Engineering address object, but not the Finance address object?

- A. You have read-only access.
- B. FortiGate joined the Security Fabric and the Finance address object was configured on the root FortiGate.
- C. FortiGate is registered on FortiManager.
- D. Another user is editing the Finance address object in workspace mode.

Answer: B

Explanation:

The inability to modify the Finance address object while being able to modify the Engineering address object suggests that the Finance object is being managed by a higher authority in the Security Fabric, likely the root FortiGate. When a FortiGate is part of a Security Fabric, address objects and other configurations may be managed centrally.

This aligns with the Fortinet FortiGate documentation on Security Fabric and central management of address objects.

NEW QUESTION 9

Which ADVPN configuration must be configured using a script on FortiManager, when using VPN Manager to manage FortiGate VPN tunnels?

- A. Enable AD-VPN in IPsec phase 1
- B. Disable add-route on hub
- C. Configure IP addresses on IPsec virtual interfaces
- D. Set protected network to all

Answer: A

Explanation:

To enable AD-VPN, you need to edit an SD-WAN overlay template and enable the Auto-Discovery VPN toggle. This will automatically add the required settings to the IPsec template and the BGP template. You cannot enable AD-VPN directly in the IPsec phase 1 settings using VPN Manager. References := ADVPN | FortiManager 7.2.0 - Fortinet Documentation

NEW QUESTION 10

Refer to the exhibit.


```
config system global
    set admin-https-pki-required disable
    set av-failopen pass
    set check-protocol-header loose
    set memory-use-threshold-extreme 95
    set strict-dirty-session-check enable
    ...
end
```

which contains a partial configuration of the global system. What can you conclude from this output?

- A. NPs and CPs are enabled
- B. Only CPs are disabled
- C. Only NPs are disabled
- D. NPs and CPs are disabled

Answer: D

Explanation:

The configuration output shows various global settings for a FortiGate device. The terms NP (Network Processor) and CP (Content Processor) relate to FortiGate's hardware acceleration features. However, the provided configuration output does not directly mention the status (enabled or disabled) of NPs and CPs. Typically, the command to disable or enable hardware acceleration features would specifically mention NP or CP in the command syntax. Therefore, based on the output provided, we cannot conclusively determine the status of NPs and CPs, hence option D is the closest answer since the output does not confirm that they are enabled.

References:

? FortiOS Handbook - CLI Reference for FortiOS 5.2

NEW QUESTION 10

After enabling IPS you receive feedback about traffic being dropped. What could be the reason?

- A. Np-accel-mode is set to enable
- B. Traffic-submit is set to disable
- C. IPS is configured to monitor
- D. Fail-open is set to disable

Answer: D

Explanation:

Fail-open is a feature that allows traffic to pass through the IPS sensor without inspection when the sensor fails or is overloaded. If fail-open is set to disable, traffic will be dropped in such scenarios¹. References: = IPS | FortiGate / FortiOS 7.2.3 - Fortinet Documentation

When IPS (Intrusion Prevention System) is configured, if fail-open is set to disable, it means that if the IPS engine fails, traffic will not be allowed to pass through, which can result in traffic being dropped (D). This is in contrast to a fail-open setting, which would allow traffic to bypass the IPS engine if it is not operational.

NEW QUESTION 13

Which two statements about metadata variables are true? (Choose two.)

- A. You create them on FortiGate
- B. They apply only to non-firewall objects.
- C. The metadata format is \$<metadata_variable_name>.
- D. They can be used as variables in scripts

Answer: AD

Explanation:

Metadata variables in FortiGate are created to store metadata associated with different FortiGate features. These variables can be used in various configurations and scripts to dynamically replace the variable with its actual value during processing. A: You create metadata variables on FortiGate. They are used to store metadata for FortiGate features and can be called upon in different configurations. D: They can be used as variables in scripts. Metadata variables are utilized within the scripts to dynamically insert values as per the context when the script runs.

Fortinet FortiOS Handbook: CLI Reference

NEW QUESTION 14

Which statement about network processor (NP) offloading is true?

- A. For TCP traffic FortiGate CPU offloads the first packets of SYN/ACK and ACK of the three-way handshake to NP
- B. The NP provides IPS signature matching
- C. You can disable the NP for each firewall policy using the command np-acceleration st to loose.
- D. The NP checks the session key or IPSec SA

Answer: B

Explanation:

Network processors (NPs) are specialized hardware within FortiGate devices that accelerate certain security functions. One of the primary functions of NPs is to provide IPS signature matching (B), allowing for high-speed inspection of traffic against a database of known threat signatures.

NEW QUESTION 17

You created a VPN community using VPN Manager on FortiManager. You also added gateways to the VPN community. Now you are trying to create firewall policies to permit traffic over the tunnel however, the VPN interfaces do not appear as available options.

- A. Create interface mappings for the IPsec VPN interfaces before you use them in a policy.
- B. Refresh the device status using the Device Manager so that FortiGate populates the IPsec interfaces
- C. Configure the phase 1 settings in the VPN community that you didnt initially configur
- D. FortiGate automatically generates the interfaces after you configure the required settings
- E. install the VPN community and gateway configuration on the fortiGate devices so that the VPN interfaces appear on the Policy Objects on fortiManager.

Answer: D

Explanation:

To use the VPN interfaces in a policy, you need to install the VPN community and gateway configuration on the FortiGate devices first. This will create the VPN interfaces on the FortiGate and sync them with FortiManager. References:

? Creating IPsec VPN communities

? VPN | FortiGate / FortiOS 7.2.0

NEW QUESTION 22

Exhibit.

```
config system central-management
  set type fortimanager
  set fmg "10.0.1.242"
  config server-list
    edit 1
      set server-type rating
      set addr-type ipv4
      set server-address 10.0.1.240
    next
    edit 2
      set server-type update
      set addr-type ipv4
      set server-address 10.0.1.243
    next
    edit 3
      set server-type rating
      set addr-type ipv4
      set server-address 10.0.1.244
    next
  end
  set include-default-servers enable
end
```

Refer to exhibit, which shows a central management configuration

Which server will FortiGate choose for web filter rating requests if 10.0.1.240 is experiencing an outage?

- A. Public FortiGuard servers
- B. 10.0.1.242
- C. 10.0.1.244
- D. 10.0.1.243

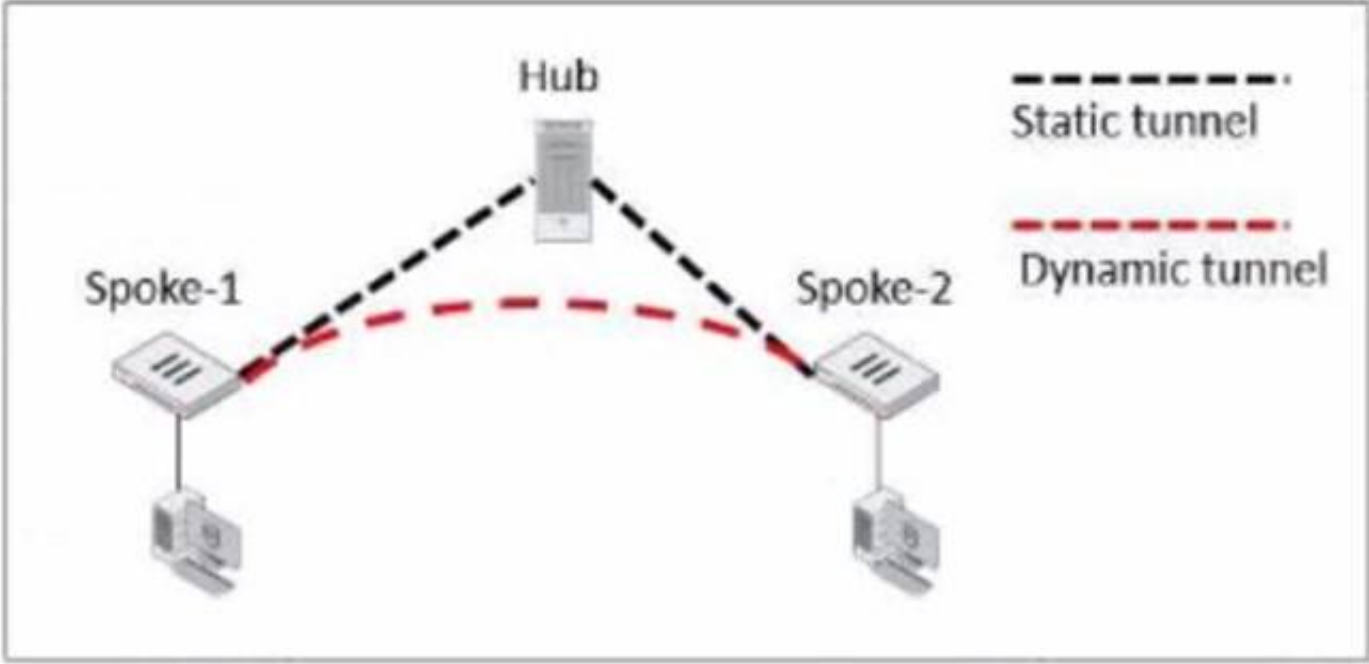
Answer: C

Explanation:

In the event of an outage at 10.0.1.240, the FortiGate will choose the next server in the sequence for web filter rating requests, which is 10.0.1.244 according to the configuration shown in the exhibit. This is because the server list is ordered by priority, and the server with the lowest priority number is chosen first. If that server is unavailable, the next server with the next lowest priority number is chosen, and so on. The public FortiGuard servers are only used if the include-default-servers option is enabled and all the custom servers are unavailable. References := Fortinet Enterprise Firewall Study Guide for FortiOS 7.2, page 132.

NEW QUESTION 26

Exhibit.



Refer to the exhibit, which shows an ADVPN network.
The client behind Spoke-1 generates traffic to the device located behind Spoke-2. Which first message does the hub send to Spoke-1 to bring up the dynamic tunnel?

- A. Shortcut query
- B. Shortcut reply
- C. Shortcut offer
- D. Shortcut forward

Answer: A

Explanation:
In an ADVPN scenario, when traffic is initiated from a client behind one spoke to another spoke, the hub sends a shortcut query to the initiating spoke. This query is used to determine if there is a more direct path for the traffic, which can then trigger the establishment of a dynamic tunnel between the spokes.

NEW QUESTION 27

Refer to the exhibit, which shows a routing table.

Network ID	Gateway IP ID	Interfaces ID	Distance ID	Type ID
0.0.0.0	10.10.254	port1	10	Static
10.10.0/24	0.0.0.0	port1	0	Connected
10.14.0/24	10.10.100	port1	110	OSPF
10.1.10.0/24	0.0.0.0	port2	0	Connected
172.16.100.0/24	0.0.0.0	port3	0	Connected

What two options can you configure in OSPF to block the advertisement of the 10.1.10.0 prefix? (Choose two.)

- A. Remove the 16.1.10.C prefix from the OSPF network
- B. Configure a distribute-list-out
- C. Configure a route-map out
- D. Disable Redistribute Connected

Answer: BC

Explanation:
To block the advertisement of the 10.1.10.0 prefix in OSPF, you can configure a distribute-list-out or a route-map out. A distribute-list-out is used to filter outgoing routing updates from being advertised to OSPF neighbors. A route-map out can also be used for filtering and is applied to outbound routing updates. References := Technical Tip: Inbound route filtering in OSPF using route-maps - Fortinet Community, OSPF | FortiGate / FortiOS 7.2.2 - Fortinet Documentation

NEW QUESTION 32

Refer to the exhibit, which shows config system central-management information.


```
config system central-management
    set type fortimanager
    set allow-push-firmware disable
    set allow-remote-firmware-upgrade disable
    set fmg "10.1.0.241"
    config server-list
        edit 1
            set server-type update
            set server-address 10.1.0.241
        next
    end
    set include-default-servers disable
end
```

Which setting must you configure for the web filtering feature to function?

- A. Add serve
- B. fortiguar
- C. net to the server list.
- D. Configure securewf.fortiguar
- E. net on the default servers.
- F. Set update-server-location to automatic.
- G. Configure server-type with the rating option.

Answer: D

Explanation:

For the web filtering feature to function effectively, the FortiGate device needs to have a server configured for rating services. The rating option in the server-type setting specifies that the server is used for URL rating lookup, which is essential for web filtering. The displayed configuration does not list any FortiGuard web filtering servers, which would be necessary for web filtering. The setting set include-default-servers disable indicates that the default FortiGuard servers are not being used, and hence, a specific server for web filtering (like securewf.fortiguard.net) needs to be configured.

NEW QUESTION 35

Which FortiGate in a Security Fabric sends logs to FortiAnalyzer?

- A. Only the root FortiGate.
- B. Each FortiGate in the Security fabric.
- C. The FortiGate devices performing network address translation (NAT) or unified threat management (UTM), if configured.
- D. Only the last FortiGate that handled a session in the Security Fabric

Answer: B

Explanation:

? Option B is correct because each FortiGate in the Security Fabric can send logs to FortiAnalyzer for centralized logging and analysis¹². This allows you to monitor and manage the entire Security Fabric from a single console and view aggregated reports and dashboards.

? Option A is incorrect because the root FortiGate is not the only device that can send logs to FortiAnalyzer. The root FortiGate is the device that initiates the Security Fabric and acts as the central point of contact for other FortiGate devices³. However, it does not have to be the only log source for FortiAnalyzer.

? Option C is incorrect because the FortiGate devices performing NAT or UTM are not the only devices that can send logs to FortiAnalyzer. These devices can perform additional security functions on the traffic that passes through them, such as firewall, antivirus, web filtering, etc⁴. However, they are not the only devices that generate logs in the Security Fabric.

? Option D is incorrect because the last FortiGate that handled a session in the Security Fabric is not the only device that can send logs to FortiAnalyzer. The last FortiGate is the device that terminates the session and applies the final security policy⁵. However, it does not have to be the only device that reports the session information to FortiAnalyzer. References: =

? 1: Security Fabric - Fortinet Documentation¹

? 2: FortiAnalyzer Demo⁶

? 3: Security Fabric topology

? 4: Security Fabric UTM features

? 5: Security Fabric session handling

NEW QUESTION 36

Exhibit.

Edit Policy

Name ⓘ

Internet_Access

Policy Mode ⓘ

Standard

Learn Mode

Incoming Interface

port3

Outgoing Interface

port1

Source

all

+

Destination

all

+

Schedule

always

Service

App Default

Specify

Application

DNS

FTP

LinkedIn

+

URL Category

+

Action

ACCEPT

DENY

Firewall/Network Options

Protocol Options

default

Security Profiles

Refer to the exhibit, which contains a partial policy configuration. Which setting must you configure to allow SSH?

- A. Specify SSH in the Service field
- B. Configure port 22 in the Protocol Options field.
- C. Include SSH in the Application field
- D. Select an application control profile corresponding to SSH in the Security Profiles section

Answer: A

Explanation:

? Option A is correct because to allow SSH, you need to specify SSH in the Service field of the policy configuration. This is because the Service field determines which types of traffic are allowed by the policy1. By default, the Service field is set to App Default, which means that the policy will use the default ports defined by the applications. However, SSH is not one of the default applications, so you need to specify it manually or create a custom service for it2.

? Option B is incorrect because configuring port 22 in the Protocol Options field is not enough to allow SSH. The Protocol Options field allows you to customize the protocol inspection and anomaly protection settings for the policy3. However, this field does not override the Service field, which still needs to match the traffic type.

? Option C is incorrect because including SSH in the Application field is not enough to allow SSH. The Application field allows you to filter the traffic based on the application signatures and categories4. However, this field does not override the Service field, which still needs to match the traffic type.

? Option D is incorrect because selecting an application control profile corresponding to SSH in the Security Profiles section is not enough to allow SSH. The Security Profiles section allows you to apply various security features to the traffic, such as antivirus, web filtering, IPS, etc. However, this section does not override the Service field, which still needs to match the traffic type. References: =

? 1: Firewall policies

? 2: Services

? 3: Protocol options profiles

? 4: Application control

NEW QUESTION 39

In which two ways does fortiManager function when it is deployed as a local FDS? (Choose two)

- A. It can be configured as an update server a rating server or both
- B. It provides VM license validation services
- C. It supports rating requests from non-FortiGate devices.
- D. It caches available firmware updates for unmanaged devices

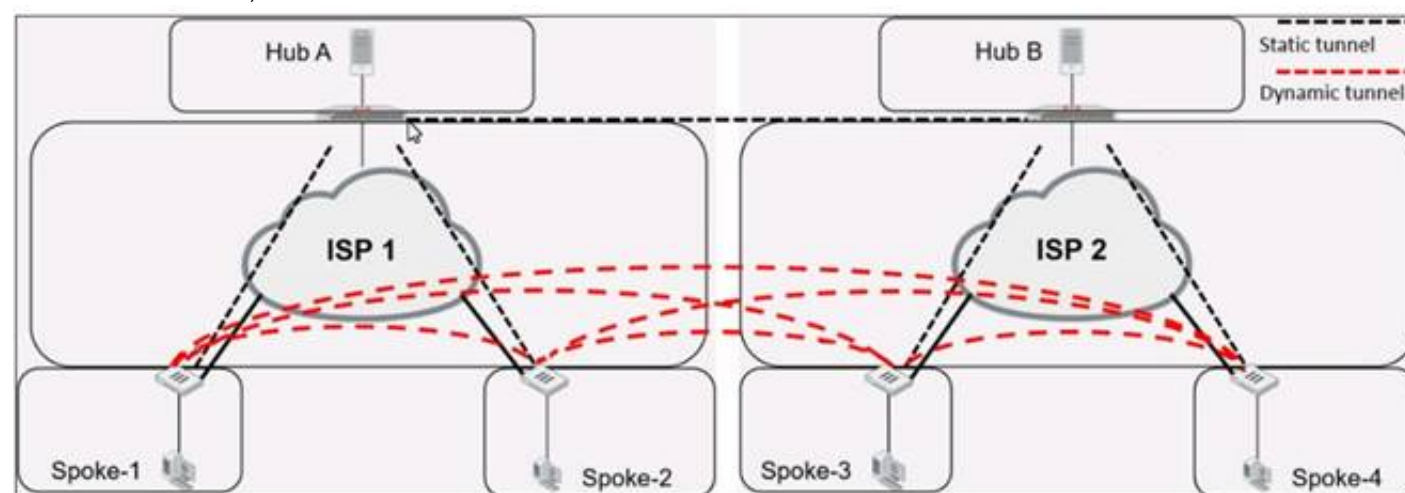
Answer: AB

Explanation:

When deployed as a local FortiGuard Distribution Server (FDS), FortiManager functions in several capacities. It can act as an update server, a rating server, or both, providing firmware updates and FortiGuard database updates. Additionally, it plays a crucial role in VM license validation services, ensuring that the connected FortiGate devices are operating with valid licenses. However, it does not support rating requests from non-FortiGate devices nor cache firmware updates for unmanaged devices. Fortinet FortiOS Handbook: FortiManager as a Local FDS Configuration

NEW QUESTION 43

Refer to the exhibit, which shows an ADVPN network.



Which VPN phase 1 parameters must you configure on the hub for the ADVPN feature to function? (Choose two.)

- A. set auto-discovery-forwarder enable
- B. set add-route enable
- C. set auto-discovery-receiver enable
- D. set auto-discovery-sender enable

Answer: AC

Explanation:

For the ADVPN feature to function properly on the hub, the following phase 1 parameters must be configured:

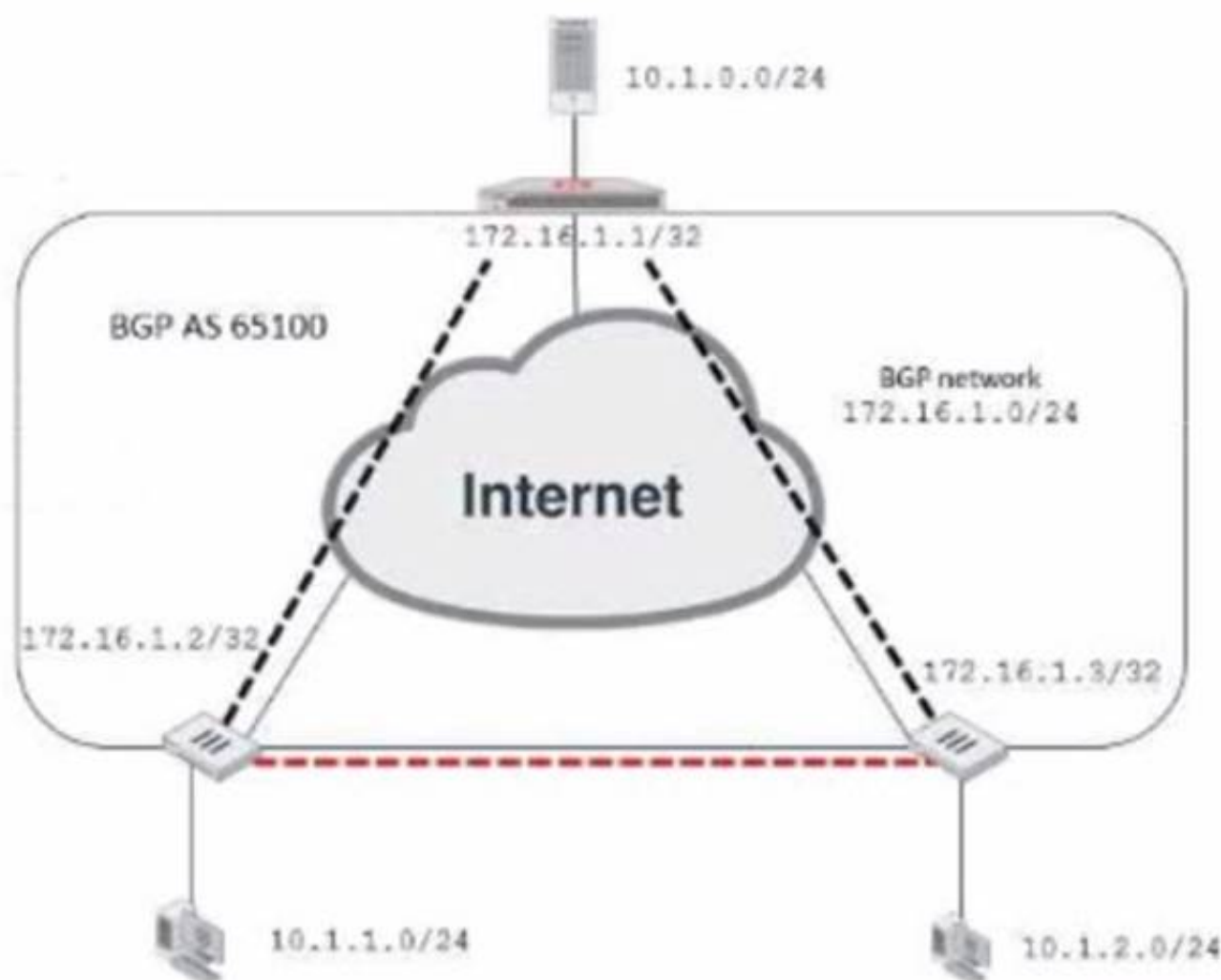
- * A. set auto-discovery-forwarder enable: This enables the hub to forward shortcut information to the spokes, which is essential for them to establish direct tunnels.
- * C. set auto-discovery-receiver enable: This allows the hub to receive shortcut offers from the spokes.

This information is corroborated by the Fortinet documentation, which explains that in an ADVPN setup, the hub must be able to both forward and receive shortcut information for dynamic tunnel creation between spokes.

NEW QUESTION 47

Exhibit.

Network diagram



Partial BGP configuration

```
Hub # show router bgp
config router bgp
  set as 65100
  set router-id 172.16.1.1
  config neighbor-group
    edit "advpn"
      set remote-as 65100
    ...
  next
end
....
end
```

Refer to the exhibit, which contains an ADVPN network diagram and a partial BGP configuration. Which two parameters should you configure in config neighbor range? (Choose two.)

- A. set prefix 172.16.1.0 255.255.255.0
- B. set route-reflector-client enable
- C. set neighbor-group advpn
- D. set prefix 10.1.0 255.255.255.0

Answer: AC

Explanation:

In the ADVPN configuration for BGP, you should specify the prefix that the neighbors can advertise. Option A is correct as you would configure the BGP network prefix that should be advertised to the neighbors, which matches the BGP network in the diagram. Option C is also correct since you should reference the neighbor group configured for the ADVPN setup within the BGP configuration.

NEW QUESTION 52

An administrator has configured two FortiGate devices for an HA cluster. While testing HA failover, the administrator notices that some of the switches in the network continue to send traffic to the former primary device. What can the administrator do to fix this problem?

- A. Verify that the speed and duplex settings match between the FortiGate interfaces and the connected switch ports
- B. Configure set link-failed-signal enable under-config system ha on both Cluster members
- C. Configure remote link monitoring to detect an issue in the forwarding path
- D. Configure set send-garp-on-failover enables under config system ha on both cluster members

Answer: B

Explanation:

Virtual MAC Address and Failover

- The new primary broadcasts Gratuitous ARP packets to notify the network that each virtual MAC is now reachable through a different switch port.
- Some high-end switches might not clear their MAC table correctly after a failover - Solution: Force former primary to shut down all its interfaces for one second when the failover happens (excluding heartbeat and reserved management interfaces):

#Config system ha

set link-failed-signal enable end

- This simulates a link failure that clears the related entries from MAC table of the switches.

NEW QUESTION 53

Exhibit.

```
config vpn ipsec phase1-interface
  edit "tunnel"
    set interface "port1"
    set ike-version 2
    set keylife 28800
    set peertype any
    set net-device enable
    set proposal aes128gcm-prfsha256 aes256gcm-prfsha384
    set auto-discovery-receiver enable
    set remote-gw 100.64.1.1
    set psksecret fortinet
  next
```

Refer to the exhibit, which contains the partial ADVPN configuration of a spoke.

Which two parameters must you configure on the corresponding single hub? (Choose two.)

- A. Set auto-discovery-sender enable
- B. Set ike-version 2
- C. Set auto-discovery-forwarder enable
- D. Set auto-discovery-receiver enable

Answer: AC

Explanation:

For an ADVPN spoke configuration shown, the corresponding hub must have auto-discovery-sender enabled to send shortcut advertisement messages to the spokes. Also, the hub would need to have auto-discovery-forwarder enabled if it is to forward on those shortcut advertisements to other spokes. This allows the hub to inform all spokes about the best path to reach each other. The ike-version does not need to be reconfigured on the hub if it's already set to version 2 and auto-discovery-receiver is not necessary on the hub because it's the one sending the advertisements, not receiving.

References:

? FortiOS Handbook - ADVPN

NEW QUESTION 57

.....

THANKS FOR TRYING THE DEMO OF OUR PRODUCT

Visit Our Site to Purchase the Full Set of Actual NSE7_EFW-7.2 Exam Questions With Answers.

We Also Provide Practice Exam Software That Simulates Real Exam Environment And Has Many Self-Assessment Features. Order the NSE7_EFW-7.2 Product From:

https://www.2passeasy.com/dumps/NSE7_EFW-7.2/

Money Back Guarantee

NSE7_EFW-7.2 Practice Exam Features:

- * NSE7_EFW-7.2 Questions and Answers Updated Frequently
- * NSE7_EFW-7.2 Practice Questions Verified by Expert Senior Certified Staff
- * NSE7_EFW-7.2 Most Realistic Questions that Guarantee you a Pass on Your FirstTry
- * NSE7_EFW-7.2 Practice Test Questions in Multiple Choice Formats and Updatesfor 1 Year