



Microsoft

Exam Questions PL-600

Microsoft Power Platform Solution Architect

About ExamBible

[Your Partner of IT Exam](#)

Found in 1998

ExamBible is a company specialized on providing high quality IT exam practice study materials, especially Cisco CCNA, CCDA, CCNP, CCIE, Checkpoint CCSE, CompTIA A+, Network+ certification practice exams and so on. We guarantee that the candidates will not only pass any IT exam at the first attempt but also get profound understanding about the certificates they have got. There are so many alike companies in this industry, however, ExamBible has its unique advantages that other companies could not achieve.

Our Advances

* 99.9% Uptime

All examinations will be up to date.

* 24/7 Quality Support

We will provide service round the clock.

* 100% Pass Rate

Our guarantee that you will pass the exam.

* Unique Gurantee

If you do not pass the exam at the first time, we will not only arrange FULL REFUND for you, but also provide you another exam of your claim, ABSOLUTELY FREE!

NEW QUESTION 1

DRAG DROP - (Topic 1)

You need to recommend solutions to meet the organization's communication needs.

What should you recommend? To answer, drag the appropriate technologies to the correct groups of users. Each technology may be used once, more than once, or not at all. You may need to drag the split bar between panes or scroll to view content.

NOTE: Each correct selection is worth one point.

Technologies	Group of users	Technology
Microsoft Teams	First Up employees	
Power Apps portals	Workers	
Microsoft 365 Business Voice		

Answer:

Technologies	Group of users	Technology
Microsoft Teams	First Up employees	Microsoft Teams
Power Apps portals	Workers	Microsoft 365 Business Voice
Microsoft 365 Business Voice		

- A. Mastered
- B. Not Mastered

Answer: A

Explanation:

Box 1: Microsoft Teams

First up employees must be able to contact each other by using a secure system to ask and answer questions about medical cases.

Microsoft Teams key capabilities:

? Connected

? Secure

? Managed

? Collaborative and productive Box 2: Microsoft 365 Business Voice

Workers must be able to communicate in near real-time with worker support agents.

Microsoft 365 Business Voice makes it easy for small and medium organizations to turn Microsoft Teams into a powerful and flexible telephone system. It's a replacement for

traditional telephony providers and in-house phone systems that can be difficult and costly to manage.

NEW QUESTION 2

HOTSPOT - (Topic 1)

You need to recommend solutions for the organization’s technical challenges.

What should you recommend? To answer, select the appropriate options in the answer area.

NOTE: Each correct selection is worth one point.

Requirement	Solution
Provide workers a self-service option for viewing personal and skills information.	<div><div></div><div>Power Automate</div><div>QnA Maker</div><div>Azure Cognitive Services</div></div>
Authenticate workers who use the self-service option for updating skills information.	<div><div></div><div>Azure Active Directory B2B</div><div>Azure Active Directory B2C</div><div>Dynamics 365 owner team</div></div>
Plan routes for audit teams.	<div><div></div><div>Azure traffic routing</div><div>Address input component</div><div>Dynamics 365 Field Service</div></div>

- A. Mastered
- B. Not Mastered

Answer: A

Explanation:

Box 1: Power Automate

Self-service purchase is available for Power Platform (Power BI, Power Apps, and Power Automate), Project, and Visio.

Box 2: Azure Active Directory B2B

Scenario: First Up Consulting recruits information technology (IT) workers for temporary or permanent positions at client companies.

Azure Active Directory (Azure AD) business-to-business (B2B) collaboration is a feature within External Identities that lets you invite guest users to collaborate with your organization. With B2B collaboration, you can securely share your company's applications and services with guest users from any other organization, while maintaining control over your own corporate data. Work safely and securely with external partners, large or small, even if they don't have Azure AD or an IT department. A simple invitation and redemption process lets partners use their own credentials to access your company's resources.

Note, Scenario:

? Workers must be able to sign into a portal by using their own email address.

Workers must be required to use a secure method of authentication to be able to view their data.

? User security roles must be customized to ensure that users are able to interact only with the specific data in which they need access. Box 3: Dynamics 365 Field Service

Dynamics 365 Field Service functionality include:

An interactive schedule board helps dispatchers assign work orders to the best resources based on location, availability, skill set, priority, and more. This is done via a manual drag- and-drop method, a semi-automated scheduling assistant, or fully automated with Resource Scheduling Optimization.

The schedule board displays each resource--whether an employee, contractor, or equipment--and their scheduled work orders. Resources and their assigned jobs are also displayed on a map along with routes and traffic patterns in real time.

NEW QUESTION 3

HOTSPOT - (Topic 1)

You need to design tables for the solution.

What should you recommend? To answer, select the appropriate options in the answer area.

NOTE: Each correct selection is worth one point.

Data type	Technical solution
Job placement record	<div><div></div><div>Custom table</div><div>Activity table</div><div>Virtual table</div></div>
Security clearance record	<div><div></div><div>Lookup (N:1)</div><div>Choice</div><div>Lookup (N:N)</div></div>

- A. Mastered
B. Not Mastered

Answer: A

Explanation:

Box 1: Virtual Table

A virtual table is a custom table in Microsoft Dataverse that has columns containing data from an external data source. Virtual tables appear in your app to users as regular table rows, but contain data that is sourced from an external database, such as an Azure SQL Database. Rows based on virtual tables are available in all clients including custom clients developed using the Dataverse web services.

Scenario:

? First Up uses an on-premises system to manage current and historical patient data including medications and medical visits.

? The company plans to reference historical data in the existing system. The records held in these systems will not be migrated to the new solution except for medication information.

? The solution must provide a worker appointment booking system that can access worker historical job placement data.

? First Up staff members must be able to view and update worker records. They must be able to see current and historical job placement data on the same form in the new solution.

Box 2: Lookup (N:1)

Each worker can have many security clearances, so need a 1:N relationship.

Scenario: The solution must support tracking of security clearance information for a worker including the date, status, and certifying agency.

NEW QUESTION 4

- (Topic 2)

You need to recommend a feature that erases agent workloads and resolves reported issues.

What should you recommend?

- A. Dynamics 365 Customer Service default functionality
B. Microsoft AppSource
C. Microsoft Store

Answer: A

Explanation:

Scenario: Agents need a way to track reservation issues. Use Dynamics 365 Customer Service to:

? Track customer issues through cases

Reference:

<https://docs.microsoft.com/en-us/dynamics365/customer-service/overview>

NEW QUESTION 5

- (Topic 2)

You need to recommend the field type to use for configuring meal selections during reservation.

Which field type should you recommend?

- A. Mastered
- B. Not Mastered

Answer: A

Explanation:

Scenario:

? Customers can select a meal when they make a reservation and can save the meal choices as a customer preference.

? The company offers two types of meals: standard and vegetarian. Meal types can be temporarily unavailable. The airline is considering offering other meal types, such as gluten-free and low-sodium options.

In PowerApps Option set is one of the field types you can use in your Entity. The information type that Option Set stores is a list of text values. And here comes the Option Set advantage – once you define its text values you can centrally managed it.

Example:



Reference:

<https://michalguzowski.pl/how-to-work-with-option-set-in-powerapps/>

NEW QUESTION 6

- (Topic 2)

You need to provide the IT specialists with design diagrams. What should you provide?

- A. Business process modeler (BPM) B AI Builder
- B. Entity relationship diagram (ERD)
- C. Dynamics 365 Product Visualize

Answer: A

Explanation:

Scenario: IT specialists want to design Power BI reports. They need to understand the underlying table relationships of the system.

Business process modeler (BPM) in Microsoft Dynamics Lifecycle Services (LCS) is a tool that you can use to create, view, and modify repeatable implementations that are based on business process libraries. BPM helps you align your business processes with industry- standard processes that are described by the American Productivity & Quality Center

(APQC)

Reference:
<https://docs.microsoft.com/en-us/dynamics365/fin-ops-core/dev-itpro/lifecycle-services/bpm-overview>

NEW QUESTION 7

HOTSPOT - (Topic 2)
You need to recommend a collaboration tool for each group.
Which tool should you use? To answer, select the appropriate tool in the answer area.
NOTE: Each correct selection is worth one point.

Group	Tool
Maintenance supervisors	<div><div></div><div>Microsoft Teams</div><div>Notes</div><div>Power Apps portal</div><div>Posts</div></div>
Aircraft maintenance vendors	<div><div></div><div>Dynamics 365 Workspace</div><div>Notes</div><div>Power Apps portal</div><div>Posts</div></div>

- A. Mastered
- B. Not Mastered

Answer: A

Explanation:
Box 1: Microsoft Teams
Maintenance supervisors must not have access to Dynamics 365 Customer Service. The supervisors must be able to communicate with the contracts team about contracts.
Box 2: Dynamics 365 Workspace
Aircraft maintenance vendors must have only view and upload privileges to their invoices and receipts.
The Expense management mobile workspace lets users capture and upload a receipt, so that they can attach it to an expense report later.

NEW QUESTION 8

HOTSPOT - (Topic 3)
You need to design the quality inspection order data model.
What should you recommend? To answer, select the appropriate options in the answer area.
NOTE: Each correct selection is worth one point.

Requirement	Action
Obtain the serial number and other machine attributes for use in the inspection order.	<div><div></div><div>Use a virtual table. Import to a custom table. Create a lookup to Dynamics 365 Field Service.</div></div>
Configure the relationship between inspection orders and inspection ratings.	<div><div></div><div>Create a one-to-many relationship and set the behavior to Parental. Create a many-to-many relationship and set the behavior to Parental. Create a one-to-many relationship and set the behavior to Cascade None. Create a many-to-many relationship and set the behavior to Cascade None.</div></div>

- A. Mastered
B. Not Mastered

Answer: A

Explanation:

Box 1: Create a lookup to Dynamics 365 Field Service
Scenario: Machines are assigned serial numbers and placed in stock until they are shipped to customers.
Entity lookup: Allows technicians to choose a Dynamics 365 record. In the inspection designer interface, admins must select an entity and a field to display. For a chosen entity, the Name field and mandatory fields are the entity attributes that can be displayed in the lookup.
Box 2: Create a one-to-many relationship and set the behavior to Parental
Scenario: Inspection orders must:
? Allow entry of quality ratings of passed or failed for each quality metric identified for the machine being rated.
? Be automatically marked as failed if one inspection step rating is marked as failed.
Each inspection order can have one or many inspection steps, and each inspection step has a rating.
Note: Each pair of tables that are eligible to have a 1:N relationship can have multiple 1:N relationships between them. Yet usually only one of those relationships can be considered a parental table relationship.

NEW QUESTION 9
HOTSPOT - (Topic 3)

You need to recommend a solution to meet user interface requirements.
What should you recommend? To answer, select the appropriate options in the answer area.
NOTE: Each correct selection is worth one point.

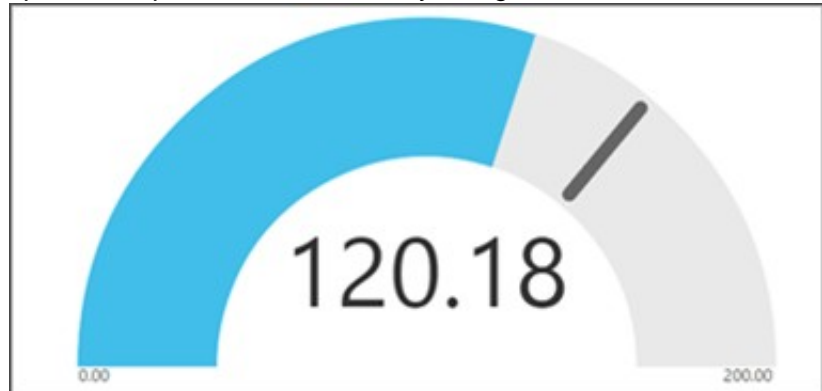
Requirement	Solution
Visual representation of gauge readings with minimum and maximum tolerances.	<div><div></div><div>Create and embed a Power BI radial gauge. Create and embed a custom visualization component. Create and embed a standard Power Apps donut chart.</div></div>
Add visibility to the manufacturing inspection records for onsite technicians.	<div><div></div><div>Configure mobile offline synchronization. Add an inspection order to the work order form Modify the sitemap for Dynamics 365 Field Service.</div></div>

- A. Mastered
B. Not Mastered

Answer: A

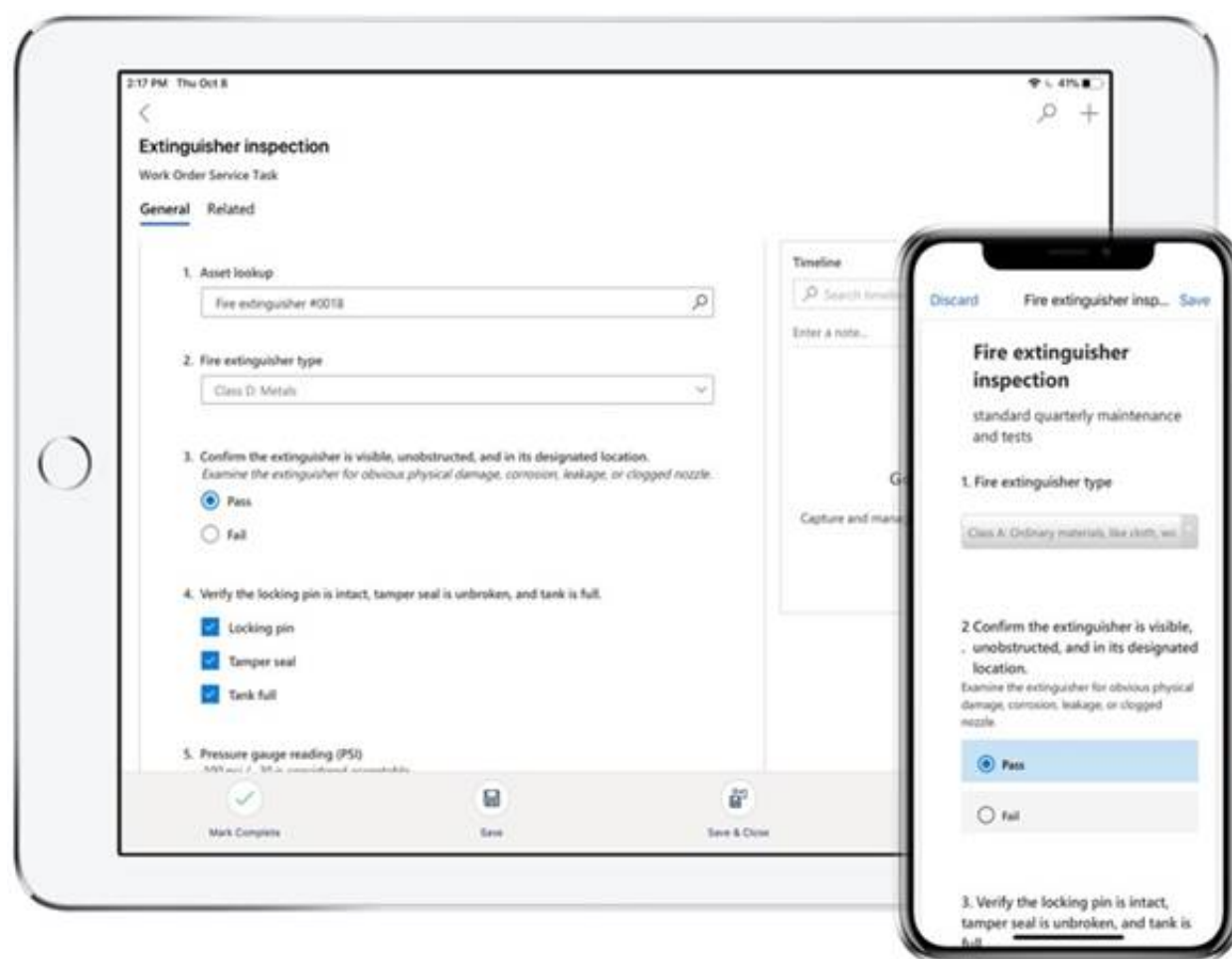
Explanation:

Box 1: Create and embed a Power Bi radial gauge
A radial gauge chart has a circular arc and shows a single value that measures progress toward a goal or a Key Performance Indicator (KPI). The line (or needle) represents the goal or target value. The shading represents the progress toward that goal. The value inside the arc represents the progress value. Power BI spreads all possible values evenly along the arc, from the minimum (left-most value) to the maximum (right-most value).



In this example, you're a car retailer tracking the sales team's average sales per month. The needle represents a 140 cars sales goal. The minimum possible average sales is 0 and the maximum is 200. The blue shading shows that the team is averaging approximately 120 sales this month.
Box 2: Add an inspection order to the work order form
You can add inspections to work orders in Dynamics 365 Field Service.
Field Service inspections are digital forms that technicians use to quickly and easily answer a list of questions as part of a work order. The list of questions can include safety protocols, pass-and-fail tests for a customer asset, an interview with a customer, or other audits and assessments performed before, during, or after a work order.

Example:



NEW QUESTION 10

- (Topic 3)

You need to resolve the issue reported during testing. What should you do?

- A. Create an image data type within the Inspection Order table.
- B. Create a relationship within the Inspection Order table to the originating inspection order.
- C. Create a Quick View form for the inspection order.

Answer: B

Explanation:

Need to store the image in the table.

Scenario: The company uses photos of employees to generate employee badges. Photos are uploaded into Microsoft 365 user profiles.

NEW QUESTION 10

- (Topic 3)

You need to manage user access to the app.

Which two connection types should you recommend? Each correct answer presents part of the solution.

NOTE: Each correct selection is worth one point.

- A. Virtual table with a customer connector
- B. Microsoft Dataverse connector
- C. Office 365 Outlook connector
- D. Office 365 Users connector

Answer: CD

Explanation:

Office 365 Users lets you access user profiles in your organization using your Office 365 account. You can use the Use the connection in your Power Platform app. Dataverse is part of the Microsoft 365 collaboration and productivity tools. Using federation, applications can connect to Dataverse using the same system user identities and credentials available in an Azure Active Directory based network.

Scenario:

? Users must be active employees of Fabrikam.

? Quality inspection app: Fabrikam is evaluating Microsoft Power Platform to determine whether it can meet the company's requirements for a manufacturing defect and quality inspection solution. Each machine produced must be subjected to a quality inspection at various points during production. Each machine must undergo a more extensive quality inspection before the machine can be shipped to the customer.

Reference:

<https://docs.microsoft.com/en-us/powerapps/maker/canvas-apps/connections/connection-office365-users>

NEW QUESTION 14

- (Topic 4)

You are a Power Apps architect for a company. The IT administrator designs a Power Apps app that is ready to be tested. The company uses application lifecycle management (ALM).

Each version and solution component must be tracked as it is tested.

You need to recommend a strategy to deploy solutions for the user acceptance testing environment.

What should you recommend?

- A. Use Package Deployer and deploy a managed solution.
- B. Use Package Deployer and deploy an unmanaged solution.
- C. Use Solution Packager and deploy a managed solution.
- D. Use Solution Packager and deploy an unmanaged solution.

Answer: D

Explanation:

Solution Packager is a tool that can unpack a compressed solution file into multiple XML files and other files, so they can be easily managed by a source control system.

Unmanaged solution: An open solution with no restrictions on what can be added, removed, or modified. This is recommended during development of a solution.

C: Managed solution

A completed solution ready to be imported into an organization. Once imported, components can't be added or removed, although they can optionally allow further customization. This is recommended when development of the solution is complete.

Reference:

<https://docs.microsoft.com/en-us/power-platform/alm/solution-packager-tool>

NEW QUESTION 17

DRAG DROP - (Topic 4)

You are a Microsoft Power Platform architect reviewing requirements for an online shopping app.

You need to identify requirement types for the app.

How should you categorize the requirements? To answer, drag the appropriate categories to the correct requirements. Each category may be used once, more than once, or not at all. You may need to drag the split bar between panes or scroll to view content

NOTE; Each correct selection is worth one point.

Categories

Functional

Non-functional

Answer Area

Requirement

The app must automatically send a confirmation email to a customer when they place an order.

Credit card numbers must be encrypted.

Category

- A. Mastered
- B. Not Mastered

Answer: A

Explanation:

Categories

Functional

Non-functional

Answer Area

Requirement

The app must automatically send a confirmation email to a customer when they place an order.

Credit card numbers must be encrypted.

Category

Functional

Non-functional

NEW QUESTION 20

HOTSPOT - (Topic 4)

You design a Power Platform solution for a customer. The solution uses Microsoft Dataverse as the data store. You are managing the go-live process for the solution.

The customer reports the following performance issues:

? Form load time is much slower than it was during testing.

? Overall system performance has been significantly slower that it was during testing.

You need to recommend how to troubleshoot system performance.

Which actions should you recommend? To answer, select the appropriate options in the answer area.

NOTE: Each correct selection is worth one point.

Performance issue	Action
Slow form load times	<div>Review workflows associated with the form events.</div> <div>Review QuickFind properties for the fields on the form.</div> <div>Review the fields that are on the form.</div>
Overall slow system performance	<div>Change all security roles from global read permissions to business unit permissions.</div> <div>Review one to many relationships to verify whether cascade settings are necessary.</div> <div>Change security roles from global read access to business unit to provide better performance.</div>

- A. Mastered
- B. Not Mastered

Answer: A

Explanation:

Box 1: Review the fields that are on the form

Keep the number of table columns (fields) to a minimum.

The more table columns (formerly referred to as fields) you have in a form, the more data that needs to be downloaded to view each record.

Box 2: Review one to many relationships to verify whether cascade settings are necessary.

NEW QUESTION 24

- (Topic 4)

A company provides mobile diagnostic imaging services. You are designing a Power Apps solution to manage patient appointments and procedures.

Patient records are stored within the company's cloud patient billing system. The patient ID must be the only information stored within the app. The patient name and date of birth must be visible to the technician to verify the patient's identity.

You need to recommend a solution to display the patient information. What should you recommend?

- A. Virtual table
- B. Business rule
- C. Privacy preference
- D. Data gateway
- E. Custom dataflow

Answer: A

Explanation:

A virtual table is a custom table in Microsoft Dataverse that has columns containing data from an external data source. Virtual tables appear in your app to users as regular table rows, but contain data that is sourced from an external database, such as an Azure SQL Database. Rows based on virtual tables are available in all clients including custom clients developed using the Dataverse web services.

Reference:

<https://docs.microsoft.com/en-us/powerapps/maker/data-platform/create-edit-virtual-entities>

NEW QUESTION 25

- (Topic 4)

Note: This question is part of a series of questions that present the same scenario. Each question in the series contains a unique solution that might meet the stated goals. Some question sets might have more than one correct solution, while others might not have a correct solution.

After you answer a question in this section, you will NOT be able to return to it. As a result, these questions will not appear in the review screen.

A company plans to automate the expense approval process.

Users currently enter data into an on-premises SQL Server database. You need to allow users to submit expenses from mobile devices.

Solution: Create a canvas app for expense data entry. Create a custom connector. Create a cloud flow for approval and use the custom connector to add data to the SQL Server database.

Does the solution meet the goal?

- A. Yes
- B. No

Answer: B

Explanation:

NEW QUESTION 28

- (Topic 4)

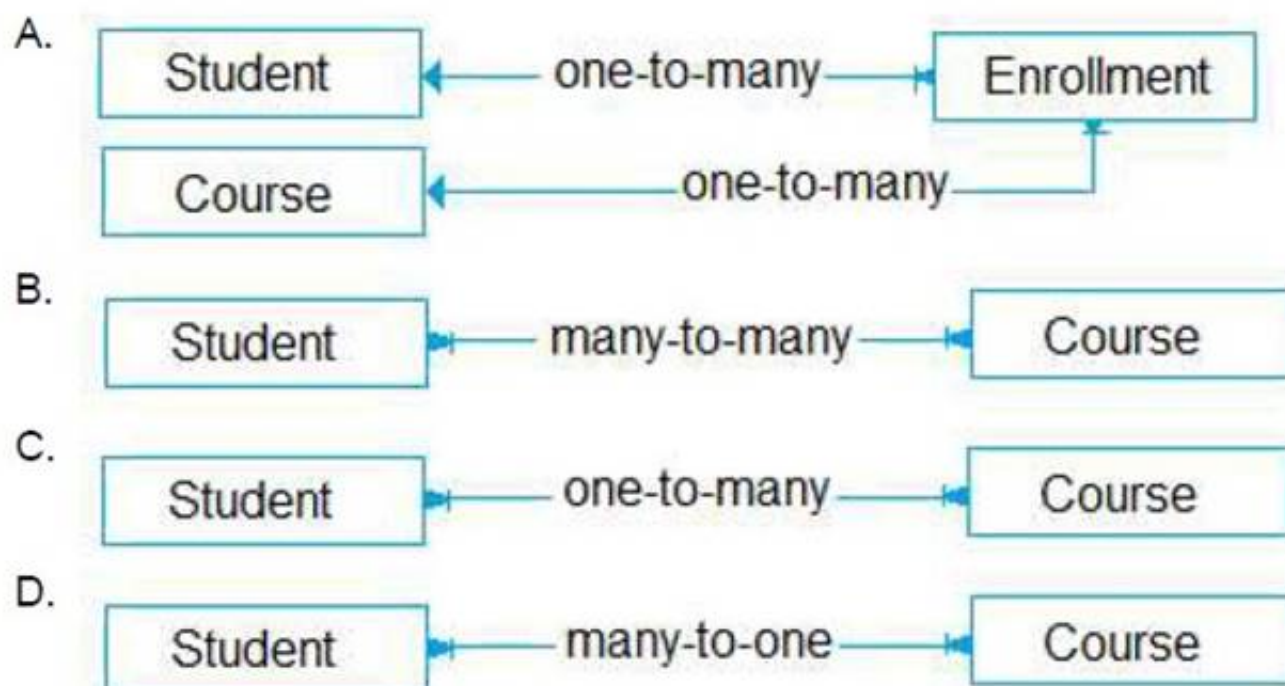
You are designing the data model for a school. The school wants to track students' enrollments in courses.

The system must meet the following requirements: Track the courses in which each student is enrolled. Track the students that are enrolled in each course.

Track dates when each student enrolled in each course and the person who approved the enrollment.

Allow users to create a report that details which students are enrolled in which courses. You need to recommend a data model that will fit the school's requirements.

Which logical model should you recommend?



A. Option A

- B. Option B
- Option C
- B: Option D

Answer: A

Explanation:

Need a relationship table.
N:N (Many-to-Many): A table relationship that depends on a special Relationship table, sometimes called an Intersect table, so that many rows of one table can be related to many rows of another table.
When viewing rows of either table in a N:N relationship you can see a list of any rows of the other table that are related to it. Reference:
<https://docs.microsoft.com/en-us/powerapps/maker/data-platform/create-edit-entity-relationships>

NEW QUESTION 32

DRAG DROP - (Topic 4)
You need to recommend methods for assigning security to each group of users. The customer provides the following requirements:
? Customers need the ability to submit a case through an online portal.
? Portal must handle 75 concurrent users submitting cases.
? Service data must be retained for at least six years.
You need to determine which requirements are functional or non-functional.
Which requirements are functional or non-functional? To answer, drag the appropriate types to the correct requirements. Each type may be used once, more than once, or not at all. You may need to drag the split bar between panes or scroll to view content.
NOTE: Each correct selection is worth one point.

Types	Requirement	Type
Functional	Customers need the ability to submit a case through an online portal.	
Non-functional	Portal must handle 75 current users submitting cases.	
	Service data must be retained for at least six years.	

Answer:

Types	Requirement	Type
Functional	Customers need the ability to submit a case through an online portal.	Functional
Non-functional	Portal must handle 75 current users submitting cases.	Non-functional
	Service data must be retained for at least six years.	Non-functional

- A. Mastered
- B. Not Mastered

Answer: A

Explanation:

Box 1: Functional
Functional requirements describe what the solution needs to do or its behaviors.
Box 2: Non-functional
Non-functional requirements commonly describe non-behavior aspects of the solution such as performance requirements.
Box 3: Non-functional
Examples of common non-functional requirement types include:
? Availability
? Compliance/regulatory
? Data retention/residency
? Performance (response time, and so on)
? Privacy
? Recovery time
? Security
? Scalability

NEW QUESTION 33

- (Topic 4)

A company uses Microsoft Power Platform and Dynamics 365 Field Service.

External workers deliver onsite service to customer locations by using the Field Service (Dynamics 365) mobile app.

You need to ensure that external users can only use the app from specific locations. Which solution should you use?

- A. Azure Conditional Access policy
- B. Azure role-based access control (RBAC)
- C. Azure Active Directory security groups
- D. Azure multi-factor authentication (MFA)

Answer: A

NEW QUESTION 34

- (Topic 4)

You are designing a Microsoft Power Platform solution for a company that has multiple Microsoft Dataverse environments.

You need to prevent specific users from accessing specific environments. What should you do?

- A. Remove all security roles from the users of the specific environments.
- B. Remove the user from the business unit.
- C. Remove the user from all security groups.
- D. Remove the user from all teams.

Answer: A

Explanation:

Microsoft Dataverse uses a role-based security model to help secure access to the database. Security roles can be used to configure environment-wide access to all resources in the environment.

Reference:

<https://docs.microsoft.com/en-us/power-platform/admin/database-security>

NEW QUESTION 35

- (Topic 4)

A client uses Dynamics 365 Sales, Power BI datasets, and Power BI dataflows.

The Dynamics 365 Sales implementation has security roles that restrict data export. You need to ensure that data has the same restrictions in Power BI as it does in Dynamics 365 Sales.

You need to design the security to avoid sensitive data from being seen.

Which two actions should you recommend? Each correct answer presents part of the solution.

NOTE: Each correct selection is worth one point.

- A. Use Microsoft Dataverse restrictions before setting up the Power BI reports.
- B. Limit the role in Dynamics 365 Sales to only data allowed so it cannot be exported to Microsoft Excel.
- C. Limit the role and ensure that exporting to Microsoft Excel is not allowed in both Dynamics 365 Sales and Power BI.
- D. Share Power BI dashboards only with users who are supported to see this data.

Answer: AB

Explanation:

A: When you share a dashboard or report, the people you share it with can view it and interact with it, but can't edit it. They see the same data that you see in the dashboard and reports and get access to the entire underlying dataset unless row-level security (RLS) is applied to the underlying dataset.

B: Depending on the sensitivity of an organization's data, it is often necessary to disable the ability to export or print reports.

Reference:

<https://docs.microsoft.com/en-us/power-bi/collaborate-share/service-share-dashboards>

NEW QUESTION 36

- (Topic 4)

A company plans to automate business processes by using Power Automate. You identify a subprocess that must be implemented across multiple flows. You need to implement the subprocess so that it is maintainable and easy to navigate. What should you do?

- A. Save a copy of the subprocess and then add any additional actions into the flow.
- B. Initiate the subprocess with an automated trigger.
- C. Copy the actions of the subprocess into the flow by using the clipboard.
- D. Initiate the subprocess with an instant trigger.

Answer: B

NEW QUESTION 40

- (Topic 4)

A company is creating a Microsoft Power Platform app to enable employees to log daily time entries. Employee user accounts are in multiple Azure AD tenants and are not located in the tenant that is running the app.

Employees must be added as Azure AD guest accounts within the tenant that will be running the app. Employees must access the model-driven app by being a member of a security team. The security team has been assigned the Employee Security role. Employees must create personal views of records to view within the system.

You need to implement a security solution. Which privilege should you use?

- A. Direct basic level
- B. Azure AD security group
- C. Team

D. Shared app access

Answer: C

NEW QUESTION 41

- (Topic 4)

You are designing a Microsoft Power Platform solution to help a company manage sales leads.

The solution has the following requirements:

? Ensure that users follow a predefined sales process regardless of the device that employees use to access the app.

? Respond to sales events by using organization-defined best practices.

You need to recommend a component for the app. What should you recommend?

- A. Power Automate cloud flow
- B. Business process flow
- C. Power Automate desktop flow
- D. Playbook

Answer: B

Explanation:

You can help ensure that people enter data consistently and follow the same steps every time they work with a customer by creating a business process flow. For example, you might want to create a business process flow to have everyone handle customer service requests the same way, or to require that people get approval for an invoice before submitting an order. Business process flows use the same underlying technology as other processes, but the capabilities that they provide are very different from other features that use processes.

Reference:

<https://docs.microsoft.com/en-us/power-automate/business-process-flows-overview>

NEW QUESTION 43

- (Topic 4)

You are designing a Microsoft Power Platform solution that will include multiple applications.

You have the following requirements:

- Support agents managing cases.
- Project managers reviewing and updating their projects.
- Stock managers managing warehouses.
- New site visitors self-registering.
- Employees tracking time entries.

Which three requirements can you meet by implementing role-based applications? Each correct answer presents a complete solution. NOTE: Each correct selection is worth one point.

- A. New site visitors self-resisting.
- B. Project managers reviewing and updating their projects.
- C. Stock managers managing warehouses.
- D. Support agents managing cases.
- E. Staff tracking time entries.

Answer: BCD

NEW QUESTION 44

HOTSPOT - (Topic 4)

You are designing a Microsoft Power Platform solution for a national repair service. The service has a 24-hour call center for customers to call and schedule repairs.

The solution dispatches a technician to troubleshoot and repair customer issues. Customers sign into a customer portal to view and log information concerning the repairs.

The repair service contracts with third party technicians for repair jobs The solution must meet the following requirements:

- Dispatch technicians to troubleshoot and repair customer issues
- Call center must log customer issues.
- Third -party technicians must be able to access assigned repair service jobs. You need to recommend an authentication strategy.

Which authentication models should you use? To answer, select the appropriate options in the answer area.

Answer Area

User type

Call center employee

Authentication model

Azure AD and a security role
Azure AD and a web role
Authenticated user and a security role
Authenticated user and a web role

Repair service customer

Azure AD and a security role
Azure AD and a web role
Authenticated user and a security role
Authenticated user and a web role

Third-party technician

Azure AD and a security role
Azure AD and a web role
Authenticated user and a security role
Authenticated user and a web role

- A. Mastered
B. Not Mastered

Answer: A

Explanation:

Answer Area

User type

Call center employee

Authentication model

Azure AD and a security role
Azure AD and a web role
Authenticated user and a security role
Authenticated user and a web role

Repair service customer

Azure AD and a security role
Azure AD and a web role
Authenticated user and a security role
Authenticated user and a web role

Third-party technician

Azure AD and a security role
Azure AD and a web role
Authenticated user and a security role
Authenticated user and a web role

NEW QUESTION 46

DRAG DROP - (Topic 4)

A company uses Microsoft Power Platform solutions.

The company plans to set up application lifecycle management (ALM) capabilities to store the solutions in source control, which will be used to automate the release process.

You need to set up the initial ALM infrastructure to store the solutions in source control. Which four actions should you perform in sequence?

To answer, move the appropriate actions from the list of actions to the answer area and arrange them in the correct order.

Actions

Run the pipeline.

Create an Export pipeline.

Create an Azure DevOps Project.

Install the Microsoft Power Platform Build Tools.

Create a Release pipeline.

Add a task for Microsoft Power Platform Import Solution.

Steps

1

2

3

4

- A. Mastered
B. Not Mastered

Answer: A

Explanation:

Actions

Run the pipeline.

Create an Export pipeline.

Create an Azure DevOps Project.

Install the Microsoft Power Platform Build Tools.

Create a Release pipeline.

Add a task for Microsoft Power Platform Import Solution.

Steps

1

2

3

4

NEW QUESTION 51

DRAG DROP - (Topic 4)

A company plans to integrate a model-driven app with external data sources. The company has the following requirements:

- Consume data in its data warehouse from Microsoft Dataverse.
- Use a plug-in to retrieve information from an external service.

You need to recommend a Microsoft Azure component for each requirement.

Which Azure components should you recommend? To answer, drag the appropriate Azure components to the correct requirements.

Each Azure component may be used once, more than once, or not at all. You may need to drag the split bar between panes or scroll to view content.

NOTE: Each correct selection is worth one point.

Azure Event Hub

Azure Service Bus

Azure Data Factory

Azure Synapse Link

Answer Area

Requirement

Consume data in a data warehouse.

Consume data from an external source.

Azure component

- A. Mastered
B. Not Mastered

Answer: A

Explanation:

Azure Event Hub

Azure Service Bus

Azure Data Factory

Azure Synapse Link

Answer Area

Requirement

Consume data in a data warehouse.

Consume data from an external source.

Azure component

Azure Data Factory

Azure Service Bus

NEW QUESTION 53

HOTSPOT - (Topic 4)

You are working with a customer to plan a go-live deployment to their production environment. The solution includes several apps and environment variables. The superuser team manages the production environment that is secured by using a specific environment Azure AD security group.

The following issues have been identified:

- The super user team cannot access make.powerapps.com to open and set the environment variables.
- Users are added to the environment Azure AD security group and are not able to access the model-driven app.
- Users are added to the environment Azure AD security group and are not able to access the canvas app.

You need to resolve the issues.

What should you do? To answer, select the appropriate options in the answer area. NOTE: Each correct selection is worth one point.

Answer Area

Issue

The superuser team cannot set the environment variables.

Users cannot access the model-driven app.

Users cannot access the canvas app.

Resolution

Assign the System Customizer role.

Assign the System Customizer role.

Assign the Basic User role.

Assign the Service Reader role.

Assign the Office Collaborator role.

Assign the Basic User role.

Assign the Basic User role.

Assign the Service Reader role.

Assign the Office Collaborator role.

Add the Azure AD Security Group.

Add users to an Azure AD Security Group.

Assign the System Customizer role.

Assign the Service Reader role.

Add users to the superuser team.

Add users to an Azure AD Security Group.

- A. Mastered
- B. Not Mastered

Answer: A

Explanation:

Answer Area

Issue

The superuser team cannot set the environment variables.

Users cannot access the model-driven app.

Users cannot access the canvas app.

Resolution

Assign the System Customizer role.

Assign the System Customizer role.

Assign the Basic User role.

Assign the Service Reader role.

Assign the Office Collaborator role.

Assign the Basic User role.

Assign the Basic User role.

Assign the Service Reader role.

Assign the Office Collaborator role.

Add the Azure AD Security Group.

Add users to an Azure AD Security Group.

Assign the System Customizer role.

Assign the Service Reader role.

Add users to the superuser team.

Add users to an Azure AD Security Group.

NEW QUESTION 54

- (Topic 4)

Note: This question is part of a series of questions that present the same scenario. Each question in the series contains a unique solution that might meet the stated goals. Some question sets might have more than one correct solution, while others might not have a correct solution.

After you answer a question in this section, you will NOT be able to return to it. As a result, these questions will not appear in the review screen.

A company uses a Microsoft Excel sheet to manage its loan application process. The company wants to optimize the process.

You need to discover inefficiencies in the process.

Solution: Upload the activity data stored in the Excel sheet to the process advisor feature. Use process mining to discover inefficiencies in the process.

Does the solution meet the goal?

- A. Yes
- B. No

Answer: B

NEW QUESTION 56

- (Topic 4)

You are designing a Power Platform solution for a company.

Users must be granted access only to data that is relevant to them.

You need to recommend actions to meet the requirements.

Which two recommendations should you make? Each correct answer presents part of the solution.

NOTE: Each correct selection is worth one point.

- A. Add column security profiles to applicable teams.
- B. Define and configure security roles.
- C. Create teams and assign security roles and users to the teams.
- D. Create business units and assign security roles to the business units.

Answer: BD

Explanation:

To control data access, you must set up an organizational structure that both protects sensitive data and enables collaboration. You do this by setting up business units, security roles, and field security profiles.

Reference:

<https://docs.microsoft.com/en-us/power-platform/admin/security-roles-privileges>

NEW QUESTION 57

DRAG DROP - (Topic 4)

You are performing a requirements analysis for a customer. The customer provides the following requirements:

- ? Power Platform storage capacity must remain under 100 percent.
- ? Customer service representatives must be sent an email when they are assigned a case.
- ? Help desk technicians must be shown an error message when they try to delete a task row.
- ? The plug-in pass rate must remain over 99 percent for the production environment.

You need determine if the requirements are functional or non-functional.

Which requirement type should you use? To answer, drag the appropriate requirement types to the correct requirements. Each requirement type may be used once, more than once, or not at all. You may need to drag the split bar between panes or scroll to view content.

NOTE: Each correct selection is worth one point.

Requirement types	Requirement	Requirement type
	Power Platform storage capacity must remain under 100 percent.	<div></div>
<div>Functional</div>	Customer Service representatives must be sent an email when they are assigned a case.	<div></div>
<div>Non-functional</div>	Help desk technicians must be shown an error message when they try to delete a task row.	<div></div>
	The plug-in pass rate must remain over 99 percent for the production environment.	<div></div>

- A. Mastered
- B. Not Mastered

Answer: A

Explanation:

Box 1: Non-functional

Non-functional requirements commonly describe non-behavior aspects of the solution such as performance requirements.

Box 2: Functional

Functional requirements describe what the solution needs to do or its behaviors. Box 3: Functional

Box 4: Non-functional

Examples of common non-functional requirement types include:

- ? Availability
- ? Compliance/regulatory
- ? Data retention/residency
- ? Performance (response time, and so on)
- ? Privacy
- ? Recovery time
- ? Security
- ? Scalability

NEW QUESTION 59

HOTSPOT - (Topic 4)

You are supporting the go-live process for a company. The company is responsible for migrating data to the Microsoft Power Platform by using a custom solution.

The company reports the following issues:

- Migration processes fail due to operation timeouts.
- Records that include lookup columns often fail to load. You need to recommend a solution.

What should you recommend? To answer, select the appropriate options in the answer area.

NOTE: Each correct selection is worth one point.

Answer Area	Issue	Solution
	Migration processes fail due to operation timeouts.	<div><div>Increase multithreading and/or batch size settings.</div><div>Increase multithreading and/or batch size settings.</div><div>Decrease multithreading and/or batch size settings.</div><div>Ensure you are loading data into all tables at the same time.</div><div>Ensure you are loading data into tables in a particular order.</div></div>
	Records that include lookup columns often fail to load.	<div><div>Ensure you are loading data into tables in a specific order.</div><div>Increase multithreading and/or batch size settings.</div><div>Decrease multithreading and/or batch size settings.</div><div>Ensure you are loading data into all tables at the same time.</div><div>Ensure you are loading data into tables in a specific order.</div></div>

- A. Mastered
- B. Not Mastered

Answer: A

Explanation:

Answer Area

Issue	Solution
Migration processes fail due to operation timeouts.	<div><div>Increase multithreading and/or batch size settings.</div><div>Increase multithreading and/or batch size settings.</div><div>Decrease multithreading and/or batch size settings.</div><div>Ensure you are loading data into all tables at the same time.</div><div>Ensure you are loading data into tables in a particular order.</div></div>
Records that include lookup columns often fail to load.	<div><div>Ensure you are loading data into tables in a specific order.</div><div>Increase multithreading and/or batch size settings.</div><div>Decrease multithreading and/or batch size settings.</div><div>Ensure you are loading data into all tables at the same time.</div><div>Ensure you are loading data into tables in a specific order.</div></div>

NEW QUESTION 64

- (Topic 4)

A local bank uses Microsoft Power Platform apps to store customer data.

The bank IT director discovers that all employees can see the social security numbers of their customers. The IT team does not understand how field-level security works and needs help with the design.

You need to recommend a solution to the bank that meets the following requirements:

- The system must restrict access to customer social security numbers to the vice president of finance only.

The vice president of finance must be able to read and update customer social security numbers.

Which two actions should you recommend? Each correct answer presents part of the solution.

NOT: Each correct selection is worth one point

- A. Set the values for the read permission and for the update permission for social security number to yet
- B. Enable field-level security for the member table.
- C. Create a held-level security profile.
- D. Enable field-level security for the social security number column.

Answer: CD

Explanation:

Field-level security is managed by the security profiles. To implement field-level security, a system administrator performs the following tasks.

? Enable field security on one or more fields for a given entity.

? Associate one more existing security profiles, or create one or more new security profiles to grant the appropriate access to specific users or teams.

Reference:

<https://docs.microsoft.com/en-us/power-platform/admin/field-level-security>

NEW QUESTION 65

DRAG DROP - (Topic 4)

You are designing a Microsoft Power Platform solution that will be deployed to two separate companies in the same Microsoft Office 365 tenant: Contoso, Ltd. and Contoso Pharmaceuticals.

The solution must meet the following security requirements:

- Restrict Contoso, Ltd. users from seeing the Contoso Pharmaceuticals company.
- Restrict access to specific forms.
- Restrict access to specific tables.

What should you recommend? To answer, drag the appropriate security types to the correct restrictions. Each security type may be used once, more than once, or not at all. You may need to drag the split bar between panes or scroll to view content.

NOTE: Each correct selection is worth one point.

Security objects

Security role

Team

Security group

User profile

Answer Area

Restriction	Security object
Restrict Contoso, Ltd. users from seeing the Contoso Pharmaceuticals company.	
Restrict access to specific forms.	
Restrict access to specific tables.	

Answer:

Security objects

Security role

Team

Security group

User profile

Answer Area

Restriction	Security object
Restrict Contoso, Ltd. users from seeing the Contoso Pharmaceuticals company.	Team
Restrict access to specific forms.	Security group
Restrict access to specific tables.	Security role

- A. Mastered
- B. Not Mastered

Answer: A

NEW QUESTION 67

- (Topic 4)

You are creating a scope of work document for a solution. You have the following requirements:

- Track support cases, first response time, and resolution time.
- Include a chat-like interface that allows managers to check the status of cases with minimal manual searching.
- Allow cases to have multiple different priority levels.

You need to include the required Dynamics 365 and Microsoft Power Platform components. Which two components should you include? Each correct answer presents part of the solution.

NOT: Each correct selection is worth one point.

- A. Dynamics 365 Customer Service
- B. Power virtual Agents
- C. PowerBI
- D. Dynamics 365 Customer Voice

Answer: AB

Explanation:

Power Virtual Agents lets you create powerful chatbots that can answer questions posed by your customers, other employees, or visitors to your website or service.

Use Dynamics 365 Customer Service to:

- ? Track customer issues through cases
- ? Record all interactions related to a case
- ? Share information in the knowledge base
- ? Create queues and route cases to the right channels
- ? Create and track service levels through service-level agreements (SLAs)
- ? Define service terms through entitlements
- ? Manage performance and productivity through reports and dashboards
- ? Create and schedule services
- ? Participate in chats
- ? Manage conversations across channels

Reference:

<https://docs.microsoft.com/en-us/power-virtual-agents/fundamentals-what-is-power-virtual-agents>

<https://docs.microsoft.com/en-us/dynamics365/customer-service/overview>

NEW QUESTION 69

- (Topic 4)

Note: This question is part of a series of questions that present the same scenario. Each question in the series contains a unique solution that might meet the stated goals. Some question sets might have more than one correct solution, while others might not have a correct solution.

After you answer a question in this section, you will NOT be able to return to it. As a result, these questions will not appear in the review screen.

A company plans to automate the expense approval process.

Users currently enter data into an on-premises SQL Server database. You need to allow users to submit expenses from mobile devices.

Solution: Create a canvas app for expense data entry. Create a desktop flow. Create a cloud flow for approval and trigger the desktop flow to add data to the SQL Server database.

Does the solution meet the goal?

- A. Yes
- B. No

Answer: B

NEW QUESTION 72

- (Topic 4)

Note: This question is part of a series of questions that present the same scenario. Each question in the series contains a unique solution that might meet the stated goals. Some question sets might have more than one correct solution, while others might not have a correct solution.

After you answer a question in this section, you will NOT be able to return to it. As a result, these questions will not appear in the review screen.

A company uses a Microsoft Excel sheet to manage its loan application process. The company wants to optimize the process.

You need to discover inefficiencies in the process.

Solution: Upload the activity data stored in the Excel sheet to the process advisor feature. Use task mining to discover inefficiencies in the process.

Does the solution meet the goal?

- A. Mastered
- B. Not Mastered

Answer: A

NEW QUESTION 75

- (Topic 4)

You are implementing a solution that includes applications which perform high-volume Microsoft Dataverse operations.

The applications must not experience a loss of functionality or loss of performance due to service protection API limits.

You need to evaluate metrics for the service protection API limits.

Which three metrics should you evaluate? Each correct answer part of the solution. NOTE Each correct selection is worth one point.

- A. Number of concurrent connections per user account.
- B. Number of API requests per web server.
- C. Amount of API calls made within plug-in code.
- D. Amount of execution time that can be used for each connection.
- E. Number of API requests per connection.

Answer: ADE

NEW QUESTION 76

HOTSPOT - (Topic 4)

A company plans to transition from an existing proprietary solution to a Power Platform solution. The company is consolidating data from several sources.

The company reports the following data quality issues with the existing solution:

? Users often encounter a character limit when entering data.
? The database includes multiple instances of duplicate records.
You need to recommend solutions to ensure that the data quality issues are not present in the Power Platform solution.
What should you recommend? To answer, select the appropriate options in the answer area.
NOTE: Each correct selection is worth one point.

Issue	Solution
Users often encounter a character limit when entering data.	<div>▼</div> <div>Define a data mask.</div> <div>Define and implement duplicate detection rules.</div> <div>Define the data type and format for each column.</div>
The database includes multiple instances of some records.	<div>▼</div> <div>Define requirements for data entry.</div> <div>Define and implement duplicate detection rules.</div> <div>Define the data type and format for each column.</div>

- A. Mastered
- B. Not Mastered

Answer: A

Explanation:

Box 1: Define the data type and format for each column Increase the data type size of the column.
Box 2: Define and implement duplicate detection rules

NEW QUESTION 81

- (Topic 4)
You are a Microsoft Power Platform architect supporting the go-live phase of a canvas app. The canvas app accesses data on-premises and in the cloud. Users are reporting the app is very slow to respond, especially upon initial launch. You need to optimize the performance of the app. Which three actions should you complete? Each correct answer presents part of the solution.
NOTE: Each correct selection is worth one point.

- A. Move data calls from the OnStart event to the Onload event.
- B. Reduce data row limits.
- C. Increase data row limits.
- D. Move data calls from the Onload event to the OnStart event.
- E. Review the settings of the data gateway for on-premises data sources.

Answer: ABE

NEW QUESTION 86

DRAG DROP - (Topic 4)
A client plans to implement Microsoft Power Platform solutions. The client identifies the following requirements for handling opportunities:
• Users must follow the same set of steps each time they process opportunities
• For opportunities with values greater than \$20,000, a follow-up date and second contact field must appear on the form.
• An error message must display if a follow-up date is not within seven days of the opportunity creation date.
You need to recommend tools to meet the client requirements. What should you recommend? To answer, drag the appropriate tools to the correct requirement. Each tool may be used once, more than once, or not at all. You may need to drag the split bar between panes or scroll to view content.
NOTE: Each correct selection is worth one point.

Tools	Requirement	Tool
Business Rule	Users must follow the same set of steps each time they process opportunities.	
Business process flow	For opportunities with values greater than \$20,000, a follow-up date and second contact field must appear on the form.	
Workflows	An error message must display if a follow-up date is not within seven days of the opportunity creation date.	

- A. Mastered
- B. Not Mastered

Answer: A

Explanation:

Tools

Business Rule

Business process flow

Workflows

Answer Area

Requirement

Users must follow the same set of steps each time they process opportunities.
For opportunities with values greater than \$20,000, a follow-up date and second contact field must appear on the form.
An error message must display if a follow-up date is not within seven days of the opportunity creation date.

Tool

Business process flow

Business Rule

Workflows

NEW QUESTION 91

- (Topic 4)

A company uses a third-party cloud-based app to make real-time business decisions. The app has a RESTful API. You must design a Microsoft Power Platform solution that interacts with the third-party app. Changes made in the Microsoft Power Platform solution must be reflected in the cloud app. You need to recommend technologies to integrate the Microsoft Power Platform solution with the cloud app. Which two technologies should you recommend? Each correct answer presents part of the solution. NOTE: Each correct selection is worth one point.

- A. Scheduled Power Automate cloud flow with a custom connector to the cloud app
- B. Power Virtual Agents
- C. Custom plug-on registered with Microsoft Dataverse
- D. Model-driven app

Answer: AC

Explanation:

A: To enable Logic Apps, Power Automate, or Power Apps to communicate with the REST or SOAP API, use a custom connector, which is a wrapper around a REST API (Logic Apps also supports SOAP APIs).
C: Custom APIs are a powerful way to connect to any existing API, hosted anywhere, from PowerApps. You do not need a PowerApps Enterprise subscription to register or use a Custom API.
Custom APIs are RESTful endpoints that you can connect to and use from PowerApps. All you'll need is a Swagger definition file for your endpoint.
Reference:
<https://docs.microsoft.com/en-us/power-platform/guidance/architecture/real-world-examples/custom-connector-canvas>
<https://powerapps.microsoft.com/hr-hr/blog/register-and-use-custom-apis-in-powerapps/>

NEW QUESTION 94

.....

Relate Links

100% Pass Your PL-600 Exam with ExamBible Prep Materials

<https://www.exambible.com/PL-600-exam/>

Contact us

We are proud of our high-quality customer service, which serves you around the clock 24/7.

Viste - <https://www.exambible.com/>