

# HP

## Exam Questions HPE6-A73

Aruba Certified Switching Professional Exam



#### NEW QUESTION 1

An administrator wants to leverage always-on PoE on AOS-CX switches. Which statement is correct regarding this feature?

- A. Provides up to 60W of power per port
- B. Supports all AOS-CX switches
- C. Provides surge protection for PoE and non-PoE ports
- D. Requires NetEdit to implement

**Answer:** A

#### NEW QUESTION 2

An administrator is managing a VSX pair of AOS-CX switches. An administrator configures the following on the primary AOS-CX switch:

```
switch(config)# vlan 100
switch(config-vlan-100)# vsx-sync
```

- A. The primary switch will erase VLAN 200 from the VSX pair
- B. The VLAN is only created on the secondary switch.
- C. The operation is not allowed by the switch and a CLI error is displayed
- D. The VLAN is created on both the primary and secondary switches

**Answer:** D

#### NEW QUESTION 3

A company requires access by all users, guests, and employees to be authenticated. Employees will be authenticated using 802.1X, whereas guests will be authenticated using captive portal. Which type of authentication must be configured on an AOS-CX switch ports where both guests and employees connect?

- A. Both 802.1X and captive portal
- B. 802.1X only
- C. Both 802.1X and MAC-Auth
- D. 802.1X, captive portal, and MAC-Auth

**Answer:** C

#### Explanation:

Employees use 802.1x  
The Aruba guest solution uses MAC-auth.  
The Portal is not configured on the switch port.

#### NEW QUESTION 4

What is a concept associated with PIM sparse mode (SM)?

- A. Reverts to forwarding when the pruning state times out.
- B. Requires periodic joins to maintain the shortest path tree (SPT).
- C. Recommended for use when high bandwidth connections exist.
- D. Implements a push content to forward traffic from the multicast source.

**Answer:** B

#### Explanation:

<https://www.youtube.com/watch?v=PhzMtUcS6UA>

#### NEW QUESTION 5

When an AOS-CX switch uses a temporary copy of the Configuration State database, what kind of analysis does NetEdit perform to ensure that the configuration is correct?

- A. Syntax validation
- B. Semantic validation
- C. Conformance validation
- D. Change validation

**Answer:** D

#### Explanation:

Validation processes  
+ Syntax validation  
– When: while typing  
– What: command syntax including in-line help  
+ Semantics validation  
– When: VALIDATE button (in multi-editor) or before DEPLOY  
– What: configuration consistency  
+ Conformance validation

- When: while editing
- What: compliance with conformance rules: corporate policies, minimum connectivity requirements, etc.
- + Change validation
- When: during DEPLOY (before and after configuration deployment)
- What: compares device state before and after changes are applied (using show commands)

#### NEW QUESTION 6

An administrator wants to implement a virtual switching technology that implements a single control-plane solution. Which S-CX switches would meet these criteria?

- A. All AOS-CX switching platforms
- B. AOS-CX 6300 and 6400 switches
- C. AOS-CX 6300, 6400, and 83xx switches
- D. AOS-CX 6300 switches

**Answer: C**

#### NEW QUESTION 7

MAC authentication is enabled on port 1/1/27 of an AOS-CX switch. The following MAC addresses are defined on the AAA server:

\* 88:3a:30:97:b6:00

\* 00:50:56:b1:fc:9b

Examine the AOS-CX switch output:

```
Switch# show mac-address-table detail
MAC age-time           : 300 seconds
Number of MAC addresses : 10
```

MAC Address	VLAN	Type	Port	Age	Denied	never_ageout
20:4c:03:5f:98:02	1	dynamic	lag256	300	false	false
88:3a:30:97:b6:00	11	port-access-security	1/1/27	300	false	false
00:50:56:b1:fc:9b	11	port-access-security	1/1/27	300	true	false
02:02:00:00:12:00	11	dynamic	lag256	300	false	false
90:20:c2:bc:17:00	11	dynamic	lag256	300	false	false

Based on this information, what is true concerning port 1/1/27?

- A. Device-mode is enabled with a client limit of 1.
- B. Device-mode is enabled with a client limit of 2.
- C. Client-mode is enabled with a client limit of 1.
- D. Client-mode is enabled with a client limit of 2.

**Answer: C**

#### Explanation:

[https://www.arubanetworks.com/techdocs/AOS-CX/AOS-CX-CLI-Bank/cli\\_6300-6400/Content/Chp\\_Port\\_acc/P](https://www.arubanetworks.com/techdocs/AOS-CX/AOS-CX-CLI-Bank/cli_6300-6400/Content/Chp_Port_acc/P) client-mode = Selects client mode. In this mode, all clients connecting to the port are sent for authentication. device-mode = Selects device mode. In this mode, only the first client connecting to the port is sent for authentication. Once this client is authenticated, the port is considered as open and all subsequent clients trying to connect on that port are not sent for authentication.

#### NEW QUESTION 8

What is correct regarding multicasting and AOS-CX switches?

- A. IGMP snooping is disabled, by default, on Layer-2 VLAN interfaces
- B. IGMP query functions are enabled, by default, on Layer-2 VLAN interfaces
- C. IGMP snooping is enabled, by default, on Layer-3 VLAN interfaces
- D. IGMP-enabled AOS-CX switches flood unknown multicast destinations

**Answer: A**

#### NEW QUESTION 9

What is correct regarding the configuration of ACLs on AOS-CX switches?

- A. Statements with the log keyword are always processed by the switch CPU.
- B. Standard ACLs are used to match on routes when performing route distribution.
- C. Wildcard masks are used to match on a range of IP addresses.
- D. Numbers 100 through 199 and 2000 through 2999 are used when creating extended ACLs.

**Answer: C**

#### NEW QUESTION 10

When cutting and pasting configurations into NetEdit, which character is used to enter commands within the context of the previous command?

- A. <ESC>

- B. ">"
- C. Space
- D. Tab

**Answer:** D

#### NEW QUESTION 10

An administrator is managing a network comprised of AOS-CX switches deployed at the aggregation layer. The switches are paired in a VSX stack and run the OSPF routing protocol. The administrator is concerned about how long it takes for OSPF to converge when one of the VSX switches has to reboot. What should the administrator do to speed up the OSPF convergence of the switch that is rebooting?

- A. Change the VSXISL link from an OSPF broadcast link point-to-point.
- B. Implement graceful restart on the VSX switches and their neighboring OSPF switches.
- C. Decrease the VSX initial synchronization timer on the two VSX switches.
- D. Define non-backbone areas on the VSX switches as totally stubby areas.

**Answer:** B

#### NEW QUESTION 13

How should a network administrator add NAE scripts and implement NAE agents that will run on an AOS-CX switch?

- A. Use the web interface of the NetEdit server
- B. Use the web interface of the AOS-CX switch
- C. Use the web interface of Aruba Central
- D. Use the CLI of the AOS-CX switch

**Answer:** B

#### NEW QUESTION 16

An AOS-CX switch is configured to implement downloadable user roles. Examine the AOS-CX switch output:

```
Access1(config)# show aaa authentication port-access interface all client-status
```

##### Port Access Client Status Details

```
Client 00:50:56:b1:7a:37
```

```
=====
```

##### Session Details

```
-----
```

```
Port : 1/1/3
```

```
Session Time : 1887s
```

##### Authentication Details

```
-----
```

```
Status : mac-auth Authenticated
```

```
Auth Precedence : dot1x - Not attempted, mac-auth - Authenticated
```

##### Authorization Details

```
-----
```

```
Role :
```

```
Status : Not ready
```

Based on this output, what is the state of the user's access?

- A. No downloadable user role exists
- B. MAC authentication has passed, but 802.1X authentication is in progress
- C. The RADIUS request timed out to the AAA server
- D. The port should be configured for 802.1X

**Answer:** A

#### Explanation:

User role "Authenticated" was passed down but does not exist

#### NEW QUESTION 17

A network administrator is managing a network that deploys a multicast service. The administrator has multiple streams successfully being routed by PIM-DM in the network. The administrator then adds a new stream with a destination address of 239.0.0.1. However, clients who have not joined the stream are receiving it. What should the administrator do to fix this problem?

- A. Verify that IGMP is enabled between the switches connecting the multicast source and receivers
- B. Change the destination multicast address to 239.1.1.1
- C. Define the 239.0.0.1 stream on the rendezvous point (RP)
- D. Define the 239.0.0.1 stream on the PIM candidate bootstrap router

**Answer:** B

#### Explanation:

MAC/IP overlap. 239.0.0.1 would be the same MAC for 224.0.0.1. 224.0.0.0/24 is always flooded over every port.

#### NEW QUESTION 21

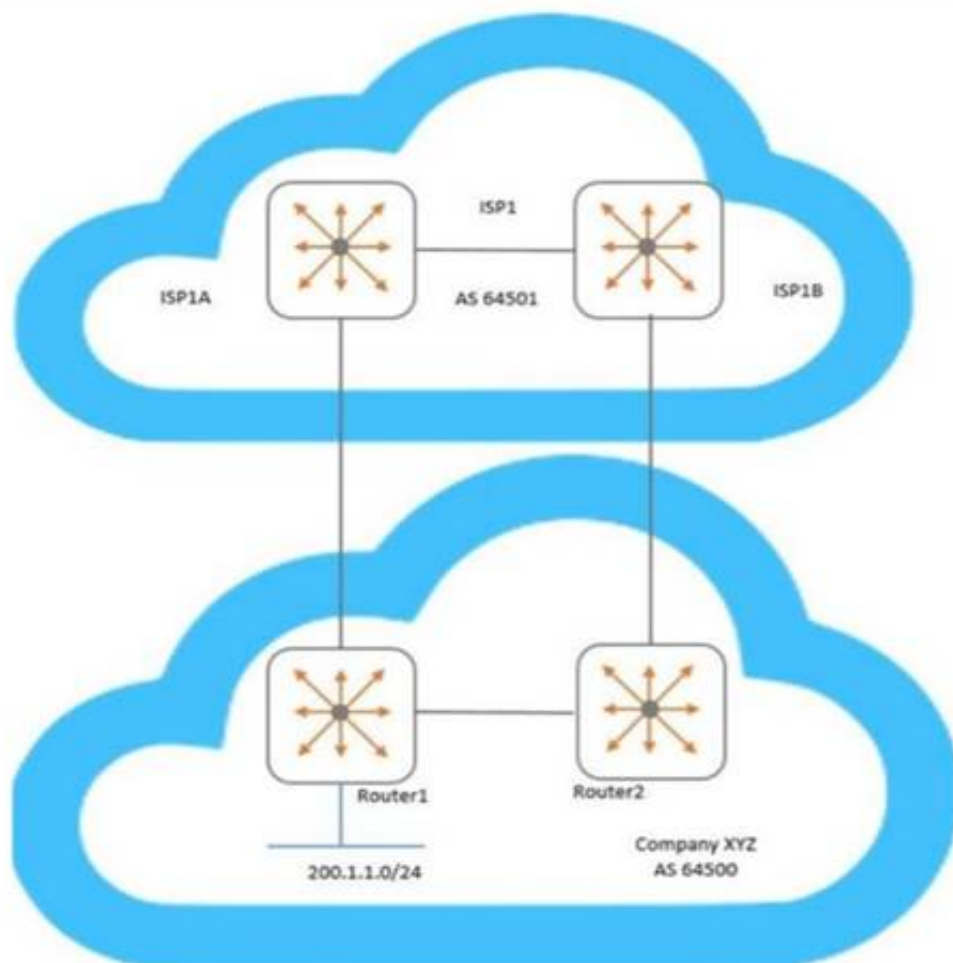
How is voice traffic prioritized correctly on AOS-CX switches?

- A. By defining device profiles with QOS settings
- B. By placing it in the strict priority queue
- C. By implementing voice VLANs
- D. By implementing weighted fair queueing (WFQ)

**Answer: B**

#### NEW QUESTION 23

Examine the network topology.



Company XYZ has two connections to a service provider (ISP1). Here is the configuration of Router1:

```
Router1(config)# ip prefix-list AS64500-routes permit 200.1.1.0/24
Router1(config)# route-map To-AS64501 permit seq 10
Router1(config-route-map)# match ip address prefix-list AS64500-routes
Router1(config-route-map)# set metric 100
Router1(config-route-map)# exit
Router1(config)# router bgp 64500
Router1(config-bgp)# address-family ipv4 unicast
Router1(config-bgp-ipv4-uc)# neighbor 192.168.1.1 route-map To-AS64501 out
```

Here is the configuration of Router2:

```
Router2(config)# ip prefix-list AS64500-routes permit 200.1.1.0/24
Router2(config)# route-map To-AS64501 permit seq 10
Router2(config-route-map)# match ip address prefix-list AS64500-routes
Router2(config-route-map)# set metric 200
Router2(config-route-map)# exit
Router2(config)# router bgp 64500
Router2(config-bgp)# address-family ipv4 unicast
Router2(config-bgp-ipv4-uc)# neighbor 192.168.2.1 route-map To-AS64501 out
```

Based on configuration of Router1 and Router2, which BGP metric is being manipulated?

- A. Weight
- B. Multiple exit discriminator
- C. Local preference
- D. AS path length

**Answer: B**

#### NEW QUESTION 27

A switch will apply a device profile to a port based on which pieces of information? (Select two.)

- A. IP header



- B. MAC address
- C. LLDP
- D. User role
- E. 802.1Q

**Answer:** AB

#### NEW QUESTION 29

Examine the following AOS-CX switch configuration:

```
Access(config)# access-list ip ext
Access(config-acl-ip)# permit ip any 10.0.11.0/255.0.255.0 count
Access(config-acl-ip)# permit ip any 10.0.12.0/255.0.255.0 log
Access(config-acl-ip)# exit
Access(config)# interface 1/1/3
Access(config-if)# apply access-list ip ext in
Access(config-if)# exit
```

Which statement correctly describes what is allowed for traffic entering interface 1/1/3?

- A. IP traffic from 10.1.11.0/24 is allowed to access 10.1.110.0/24
- B. IP traffic from 10.0.11.0/24 is allowed to access 10.1.12.0/24
- C. Traffic from 10.0.12.0/24 will generate a log record when accessing 10.0.11.0/24
- D. IP traffic from 10.1.12.0/24 is allowed to access 172.0.1.0/23

**Answer:** B

#### Explanation:

People seem to be confused by inverted mask/wildcard masks. They would be correct for Cisco switches, but AOS-CX does NOT use wildcard masks; "AOS-CX switches do not support wildcard masks - only prefixes or subnet masks - when created ACEs."

Cisco: 255.0.255.0 = xx.123.xx.123 AOS-CX: 255.0.255.0 = 123.xx.123.xx

#### NEW QUESTION 32

An administrator is concerned about the security of the control plane connection between an AOS-CX switch and an Aruba Mobility Controller (MC) when implementing user-based tunneling. How should the administrator protect this traffic?

- A. IPSec with a digital certificate
- B. GRE with a pre-shared key
- C. PAPI with an MD5 pre-shared key
- D. IPSec with a pre-shared key

**Answer:** C

#### NEW QUESTION 34

What would prevent two OSPF routers from forming an adjacency? (Select two.)

- A. Different priorities
- B. Different area types
- C. Different MTU sizes
- D. Different IP addresses
- E. Different router IDs

**Answer:** BC

#### NEW QUESTION 39

An administrator will be deploying NetEdit to manage an Aruba solution. What does NetEdit support?

- A. Manages AOS-CX switches and Aruba gateways
- B. Support for Aruba-supplied security updates
- C. Tracks configuration and hardware information
- D. Can be purchased as a VM and/or hardware appliance

**Answer:** A

#### NEW QUESTION 44

A network administrator is implementing NAE on AOS-CX switches. When attempting to create an agent on a particular switch, the agent appears in the NAE Agents panel with a red triangle error symbol and a status of "Unknown".

What is the cause of this issue?

- A. The administrator does not have the appropriate credentials to interact with NAE
- B. The number of scripts or agents has exceeded the hardware's capabilities
- C. A connectivity issue exists between NAE and the AOS-CX switch
- D. The RESTful API has not been enabled on the AOS-CX switch

**Answer:** B

**Explanation:**

[https://www.arubanetworks.com/techdocs/AOS-CX/10.06/HTML/5200-7717/Content/Chp\\_TS/err-nae-age-not](https://www.arubanetworks.com/techdocs/AOS-CX/10.06/HTML/5200-7717/Content/Chp_TS/err-nae-age-not)

**NEW QUESTION 45**

Examine the VSX-related configuration of the core layer AOS-CX switch:

```
ICX-Tx-Core1(config)# vrf KA
ICX-Tx-Core1(config)# interface 1 / 1 / 45
ICX-Tx-Core1(config-if-1 / 1 / 45)# no shutdown
ICX-Tx-Core1(config-if-1 / 1 / 45)# vrf attach KA
ICX-Tx-Core1(config-if-1 / 1 / 45)# ip address 192.168.0.0 / 31
ICX-Tx-Core1(config-if-1 / 1 / 45)# exit
ICX-Tx-Core1(config)# interface lag 256
ICX-Tx-Core1(config-if)# no shutdown
ICX-Tx-Core1(config-if)# no routing
ICX-Tx-Core1(config-if)# vlan trunk native 1
ICX-Tx-Core1(config-if)# vlan trunk allowed all
ICX-Tx-Core1(config-if)# lacp mode active
ICX-Tx-Core1(config-if)# exit
ICX-Tx-Core1(config)# interface 1 / 1 / 46-1 / 1 / 47
ICX-Tx-Core1(config-if-<1 / 1 / 46-1 / 1 / 47>)# mtu 9198
ICX-Tx-Core1(config-if-<1 / 1 / 46-1 / 1 / 47>)# exit
ICX-Tx-Core1(config)# vsx
ICX-Tx-Core1(config-vsx)# inter-switch-link lag 256
ICX-Tx-Core1(config-vsx)# role primary
ICX-Tx-Core1(config-vsx)# vsx-sync vsx-global
ICX-Tx-Core1(config-vsx)# exit
ICX-Tx-Core1(config)# vsx
ICX-Tx-Core1(config-vsx)# keepalive peer 192.168.0.1 source 192.168.0.0 vrf KA
ICX-Tx-Core1(config-vsx)# exit
ICX-Tx-Core1(config)# interface lag 1 multi-chassis
ICX-Tx-Core1(config-lag-if)# no routing
ICX-Tx-Core1(config-lag-if)# vlan access 1
ICX-Tx-Core1(config-lag-if)# lacp mode active
ICX-Tx-Core1(config-lag-if)# exit
ICX-Tx-Core1(config)# int 1 / 1 / 1
ICX-Tx-Core1(config-if)# description access 1
ICX-Tx-Core1(config-if)# lag 1
ICX-Tx-Core1(config-if)# no shutdown
ICX-Tx-Core1(config-if)# exit
```

A network administrator is troubleshooting a connectivity issue involving the VSX LAG (link aggregation) between the core and access layer switch, during HW replacement of one of the core switches.

Which configuration should the administrator add to the core switch to fix this issue?

- A. ICX-Tx-Core1(config)# vsxICX-Tx-Core1(config-vsx)# system-mac 02:01:00:00:01:00
- B. ICX-Tx-Core1(config)# interface lag 1 multi-chassis ICX-Tx-Core1(config-if-lag-if)# mtu 9198
- C. ICX-Tx-Core1(config)# interface 1/1/46-1/1/47ICX-Tx-Core1(config-if-vlan)# active-gateway ip 10.1.11.1 mac 02:02:00:00:01:00
- D. ICX-Tx-Core1(config)# interface 1/1/45ICX-Tx-Core1(config-if-vlan)# active-gateway ip 192.168.0.0 mac 02:02:00:00:01:00

**Answer:** D

**NEW QUESTION 47**

What are best practices when implementing VSX on AOS-CX switches? (Choose two.)

- A. The ISL lag should use the default MTU size.
- B. Timers should be left at their default values.
- C. The default system MAC addresses should be used.
- D. The keepalive connection should use a direct layer-3 connection.
- E. The ISL lag should use at least 10GbE links or faster.

**Answer:** BD

**NEW QUESTION 50**

In AOS-CX switching, what determines when a frame is forwarded by the switch between the ingress and the egress port?

- A. Egress port
- B. Ingress port
- C. VSX switch tables
- D. Fabric Load Balancer

**Answer:** B

**NEW QUESTION 54**

What is correct regarding the tunneling of user traffic between AOS-CX switches and Aruba Mobility Controllers (MCs)?

- A. Uses IPSec to protect the management and data traffic
- B. Uses IPSec to protect the management traffic
- C. Supports only port-based tunneling
- D. Uses the same management protocol as Aruba APs

**Answer:** D

**Explanation:**

because both AP and Switch use PAPI . Moreover in AOS-CX switch currently not support port based tunnel. AOS-CX switch only support User Based Tunnel (UBT)

**NEW QUESTION 56**

What is the purpose of the transit VLAN when implementing dynamic segmentation policies involving AOS-CX switches and an Aruba gateway solution?

- A. It identifies the VLAN that the user traffic will be assigned to when it comes out of the tunnel and is forwarded by the gateway.
- B. It identifies the VLAN that the user traffic will be assigned to, whether the traffic is tunneled or locally switched
- C. It defines the VXLAN identifier to identified UBT traffic between the AOS-CX switches and the gateway solution
- D. It identifies the VLAN that the switch will use when tunneling the traffic to the gateway

**Answer:** D

**NEW QUESTION 59**

A network engineer is having a problem adding a custom-written script to an AOS-CX switch's NAE GUI. The script was written in Python and was successfully added on other AOS-CX switches. The engineer examines the following items from the CLI of the switch:

```
switch# show capacities-status nae
```

System Capacities Status: Filter NAE

Capacity Status Name	Value	Maximum
Number of configured NAE agents currently active in the system	1	100
Number of configured NAE monitors currently active in the system	7	500
Number of configured NAE scripts currently active in the system	50	50

```
switch# show ntp status
NTP Status Information
```

NTP : Disabled  
NTP Authentication : Disabled  
NTP Server Connections : Using the default VRF

System time : Sat May 2 11:50:55 UTC 2020  
NTP uptime : 0 minutes, 0 seconds

Not synchronized with an NTP server.

```
switch# show crypto pki certificate
```

Certificate Name	Cert Status	Associated Applications
local-cert	installed	captive-portal, hsc, https-server,
syslog-client		

```
switch# show crypto pki application
```

Associated Applications	Certificate Name	Cert Status
captive-portal		not configured, using local-cert
hsc		not configured, using local-cert
https-server		not configured, using local-cert
syslog-client		not configured, using local-cert

What should the engineer perform to fix this issue?

- A. Install the script's signature before installing the new script
- B. Ensure the engineer's desktop and the AOS-CX switch are synchronized to the same NTP server
- C. Enable trust settings for the AOS-CX switch's SSL certificate
- D. Remove a script that is no longer used before installing the new script

**Answer:** D

**NEW QUESTION 63**

When implementing deficit weighted round robin queuing, what importance does the weight value have?

- A. Prioritizing latency-sensitive traffic
- B. Queue priority in processing traffic
- C. Strict priority queue
- D. Percentage of interface bandwidth

**Answer:** B

**NEW QUESTION 64**



An administrator wants to track what configuration changes were made on a switch. What should the administrator implement to see the configuration changes on an AOS-CX switch?

- A. AAA authorization
- B. Network Analysis Engine (NAE)
- C. AAA authentication
- D. VSX synchronization logging

**Answer:** B

#### NEW QUESTION 65

A network engineer is examining NAE graphs from the Dashboard but notices that the time shown in the graph does not represent the current time. The engineer verifies that the AOS-CX switch is configured for NTP and is successfully synchronized. What should be done to fix this issue?

- A. Ensure the engineer's web browser is configured for the same timezone as the AOS-CX switch
- B. Ensure the engineer's PC is synchronized to the same NTP server as the AOS-CX switch
- C. Ensure NetEdit and the AOS-CX switch are synchronized to the same NTP server
- D. Enable trust settings for the AOS-CX switch's SSL certificate

**Answer:** B

#### Explanation:

[https://techhub.hpe.com/eginfolib/Aruba/OS-CX\\_10.04/5200-6724/index.html#GUID-2048A4D8-5458-4C00-A](https://techhub.hpe.com/eginfolib/Aruba/OS-CX_10.04/5200-6724/index.html#GUID-2048A4D8-5458-4C00-A)

#### NEW QUESTION 68

A network administrator is implementing a configuration plan in NetEdit. The administrator used NetEdit to push the configuration plan to the switch. Which option in the NetEdit planning section should the administrator select to save the configuration running on the switch to the startup-config?

- A. EDIT
- B. VALIDATE
- C. COMMIT
- D. DEPLOY

**Answer:** C

#### NEW QUESTION 72

Examine the output from an AOS-CX switch implementing a dynamic segmentation solution involving downloadable user roles:

Switch# show port-access role clearpass Role information:

Name : icxarubadur\_employee-3044-2 Type : clearpass

Status: failed, parsing\_failed Reauthentication Period : Authentication Mode : Session Timeout :

The downloadable user roles are not being downloaded to the AOS-CX switch. Based on the above output, what is the problem?

- A. The certificate that ClearPass uses is invalid
- B. The AOS-CX switch does not have the ClearPass certificate involved
- C. DNS fails to resolve the ClearPass server's FQDN
- D. There is a date/time issue between the ClearPass server and the switch

**Answer:** C

#### Explanation:

"The top-right example shows a parsing\_failed status, typically indicative of either a DNS or network connectivity issue."

#### NEW QUESTION 77

An administrator creates an ACL rule with both the "count" and "log" option enabled. What is correct about the action taken by an AOS-CX switch when there is a match on this rule?

- A. By default, a summarized log is created every minute with a count of the number of matches
- B. Logging will not include certificate and TLS events, but counting will
- C. The "count" and "log" options are processed by the AOS-CX switch's hardware ASIC
- D. The total in the "log" record and the count could contain different rule matching statistics

**Answer:** D

#### Explanation:

From the "AOS-CX 10.08 ACLs and Classifier Policies Guide" : "You may see a minor discrepancy between the ACL logging statistics and the hit counts statistics due to the time required to record the log message."

#### NEW QUESTION 81

A company has a few servers in a secure, remote location storing highly-confidential documents connected to two AOS-CX 6400 switches configured in a VSX pair. The AOS-CX switches perform access control with 802.1X and will be implementing user-based tunneling (UBT) so that Aruba gateway application inspection and stateful firewall policies can be applied to the traffic. The gateways are running version 84 and implement the AP, PEF, and RFP licenses. Which licensing is needed for the two AOS-CX switches?

- A. 2 AP and 2 PEF licenses only
- B. 1 AP license only
- C. 2 AP, 2 PEF, and 2 RFP licenses only
- D. 1 AP, 1 PEF, and 1 RFP licenses only

**Answer:** D

**NEW QUESTION 85**

What is true regarding VSX and keepalives on AOS-CX switches?

- A. A separate VLAN on the ISL link is used.
- B. A VSX LAG for the keepalives is a best practice.
- C. The OOBM port must be used.
- D. A 1GbE or faster port is used.

**Answer:** D

**NEW QUESTION 90**

Which AOS-CX switches support weighted fair queuing (WFQ)?

- A. Both 8320 and 8325
- B. Both 6300 and 6400
- C. 8400 only
- D. 6300 only

**Answer:** C

**Explanation:**

[https://www.arubanetworks.com/techdocs/AOS-CX/AOSCX-CLI-Bank/cli\\_8400/Content/QoS\\_cmds/wfq-que-x](https://www.arubanetworks.com/techdocs/AOS-CX/AOSCX-CLI-Bank/cli_8400/Content/QoS_cmds/wfq-que-x)

**NEW QUESTION 91**

A network administrator is implementing OSPF, where there are two exit points. Each exit point has a stateful, application inspection firewall to implement company policies.

What would the best practice be to ensure that one firewall will see both directions of the traffic, preventing asynchronous connections in the network?

- A. Both ASBRs should define External Type 1 routes for the
- B. Both ASBRs should define External Type 1 routes for the
- C. Both ASBRs should define External Type 2 routes for the
- D. Both ASBRs should define External Type 2 routes for the

**Answer:** A

**NEW QUESTION 96**

An administrator wants to leverage the Network Analysis Engine (NAE) feature on AOS-CX switches to perform root cause analysis and to assist in quickly identifying problems. Which two AOS-CX databases does the administrator have access to when implementing scripts? (Select two.)

- A. Time-series
- B. API
- C. VSX
- D. Configuration
- E. Audit

**Answer:** AC

**NEW QUESTION 98**

A company has recently purchased a ClearPass AAA solution. Their network consists of AOS-CX switches at the access layer. The company is implementing a rollout of IoT devices for smart building management to control the lighting and HVAC systems. The network administrator is concerned about allowing secure access to these devices since they only support MAC-Auth.

Which ClearPass feature should the administrator leverage to help determine that MAC address spoofing is not occurring for this group of devices?

- A. User-based tunneling
- B. Device fingerprinting
- C. RADIUS change of authorization
- D. Downloadable user roles

**Answer:** B

**NEW QUESTION 99**

What is correct regarding the operation of VSX and multicasting with PIM-SM routing configured?

- A. Each VSX peers runs PIM and builds its own group databas
- B. One of the VSX peers is elected as the designated router (DR) to forward multicast streams to a receiver VLAN
- C. Each VSX peers runs PIM and creates a shared group databas
- D. Both VSX peers can forward multicast streams to receivers in a VLAN, achieving load sharing
- E. Each VSX peers runs PIM and builds its own group databas
- F. Both VSX peers can forward multicast streams to receivers in a VLAN, achieving load sharing
- G. Each VSX peers runs PIM and creates a shared group databas
- H. One of the VSX peers is elected as the designated router (DR) to forward multicast streams to a receiver VLAN

**Answer:** A

**Explanation:**

"both VSX switches as a PIM Designate Router (DR). One node is the actual DR, the other node is the proxy DR." "Only the actual DR performs multicast routing and forward traffic destined to groups to its downstream VLANs in the data-path."

[https://www.arubanetworks.com/techdocs/AOS-CX/10.07/HTML/5200-7888/Content/Chp\\_Pre\\_tra\\_loss/ip-mul](https://www.arubanetworks.com/techdocs/AOS-CX/10.07/HTML/5200-7888/Content/Chp_Pre_tra_loss/ip-mul)

**NEW QUESTION 104**

How is NetEdit installed at a customer location?

- A. Via an Aruba NetEdit hardware appliance
- B. Via a DVD using a virtualized platform like Microsoft's Hyper-V
- C. Via the Aruba Central cloud solution
- D. Via an OVA file and a virtualized platform like VMware's ESXi

**Answer:** D

**NEW QUESTION 105**

An administrator of a company has concerns about upgrading the access layer switches. The users rely heavily on wireless and VoIP telephony. Which is the best recommendation to ensure a short downtime for the users during upgrading the access layer switches?

- A. Install the in-service software upgrade (ISSU) feature with clustering enabled
- B. Install AOS-CX 6300 or 6400 switches with always-on POE
- C. Implement VSF on the AOS-CX access switches
- D. Implement VSX on the AOS-CX access switches

**Answer:** B

**Explanation:**

The key is to reduce the impact. VSF or not will have same impact when the switch reboots. But if the switch support always on poe then at least the POE clients will be ready before the switch finish booting up. If you dont have always on POE, then the poe clients will reboot AFTER the switch boots up.

**NEW QUESTION 110**

What is required when implementing captive portal an AOS-CX switches?

- A. Certificate installed on the switch
- B. Web server running on the switch
- C. Device fingerprinting
- D. AAA server

**Answer:** D

**NEW QUESTION 112**

When implementing user-based tunneling on an AOS-CX switch, which component defines the primary and backup Aruba gateways?

- A. Transit VLAN
- B. Gateway role
- C. Server group
- D. Zone

**Answer:** D

**NEW QUESTION 115**

Which AOS-CX feature is used to prevent head-on-line (HOL) blocking?

- A. VSF
- B. WFQ
- C. VOQ
- D. VSX

**Answer:** C

**NEW QUESTION 117**

A company uses NetEdit to manage a network of 700 AOS-CX switches and approximately 1,000 other SNMP-capable devices.

Which management solution should the company use to monitor all the devices, as well as see a topology picture of how all the devices are connected together?

- A. NetEdit
- B. Aruba AirWave
- C. Aruba Activate
- D. Network Analysis Engine (NAE)

**Answer:** A

**NEW QUESTION 122**

A company has just purchased AOS-CX switches. The company has a free and open-source AAA solution. The company wants to implement access control on the Ethernet ports of the AOS-CX switches.

Which security features can the company implement given the equipment that they are using?

- A. Port-based tunneling
- B. Device fingerprinting
- C. Local user roles
- D. Downloadable user roles

**Answer: C**

#### NEW QUESTION 125

What is correct regarding rate limiting and egress queue shaping on AOS-CX switches?

- A. Rate limiting and egress queue shaping can be used to restrict inbound traffic
- B. Limits can be defined only for broadcast and multicast traffic
- C. Rate limiting and egress queue shaping can be applied globally
- D. Traffic rate limit is configured on queue level

**Answer: D**

#### NEW QUESTION 129

Examine the configuration performed on newly deployed AOS-CX switches:

```
Switch(config)# radius-server host cppm key plaintext aruba123 vrf mgmt
Switch(config)# aaa authentication port-access dot1x authenticator radius server-group cppm
Switch(config)# aaa authentication port-access dot1x authenticator enable
Switch(config)# interface 1/1/1 – 1/1/48
Switch(config-if)# aaa authentication port-access dot1x authenticator
Switch(config-if-dot1x-auth)# enable
Switch(config-if-dot1x-auth)# exit
Switch(config-if)# exit
```

After performing this configuration, the administrator notices that the switch ports always remain in the EAP start state. What should the administrator do to fix this problem?

- A. Define the server group cppm
- B. Set the ports to client-mode
- C. Create and assign a local user role to the ports
- D. Enable change of authorization (CoA)

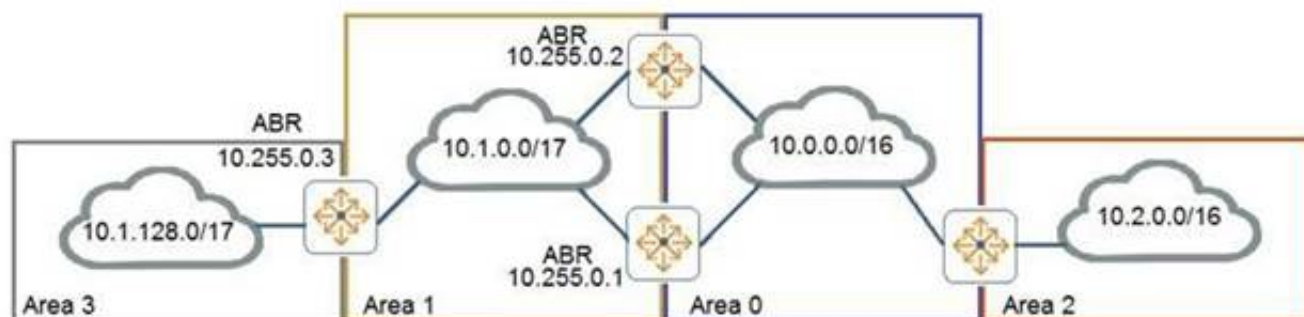
**Answer: A**

#### Explanation:

<https://community.arubanetworks.com/blogs/esupport1/2020/04/29/downloadable-user-role-configuration-in-aruba>

#### NEW QUESTION 131

Examine the attached exhibit.



The network administrators is trying to add a remote location as area 3 to the network shown in the diagram. Based on current connection restrictions, the administrator cannot connect area 3 directly to area 0. The network is using AOS-CX switches. Which feature should the administrator implement to provide connectivity to the remote location?

- A. Not-so-stubby areas
- B. Bidirectional forward detection (BFD)
- C. OSPFv3
- D. Virtual links

**Answer: D**

#### NEW QUESTION 132

A network administrator wants to replace older access layer switches with AOS-CX 6300 switches. Which virtual switching technology can the administrator implement with this solution?

- A. Both VSF and VSX
- B. Only Backplane stacking
- C. Only VSF
- D. Only VSX

**Answer: C**

#### NEW QUESTION 137

.....



## Thank You for Trying Our Product

### We offer two products:

1st - We have Practice Tests Software with Actual Exam Questions

2nd - Questions and Answers in PDF Format

### HPE6-A73 Practice Exam Features:

- \* HPE6-A73 Questions and Answers Updated Frequently
- \* HPE6-A73 Practice Questions Verified by Expert Senior Certified Staff
- \* HPE6-A73 Most Realistic Questions that Guarantee you a Pass on Your FirstTry
- \* HPE6-A73 Practice Test Questions in Multiple Choice Formats and Updatesfor 1 Year

**100% Actual & Verified — Instant Download, Please Click**  
**[Order The HPE6-A73 Practice Test Here](#)**