

Fortinet

Exam Questions NSE7_SDW-7.0

Fortinet NSE 7 - SD-WAN 7.0



NEW QUESTION 1
Refer to the exhibits.

Exhibit A

```

config duplication
edit 1
    set srcaddr "10.0.1.0/24"
    set dstaddr "10.1.0.0/24"
    set srcintf "port5"
    set dstintf "overlay"
    set service "ALL"
    set packet-duplication force
next
end

branch1_fgt # diagnose sys sdwan zone
Zone SASE index=2
    members(0):
Zone overlay index=4
    members(3): 19(T_INET_0_0) 20(T_INET_1_0) 21(T_MPLS_0)
Zone underlay index=3
    members(2): 3(port1) 4(port2)
Zone virtual-wan-link index=1
    members(0):

1.274665 port5 in 10.0.1.101 -> 10.1.0.7: icmp: echo request
1.275788 T_INET_0_0 out 10.0.1.101 -> 10.1.0.7: icmp: echo request
1.275790 T_INET_1_0 out 10.0.1.101 -> 10.1.0.7: icmp: echo request
1.275801 T_MPLS_0 out 10.0.1.101 -> 10.1.0.7: icmp: echo request
1.278365 T_INET_1_0 in 10.1.0.7 -> 10.0.1.101: icmp: echo reply
1.278553 port5 out 10.1.0.7 -> 10.0.1.101: icmp: echo reply
    
```

Exhibit B

```

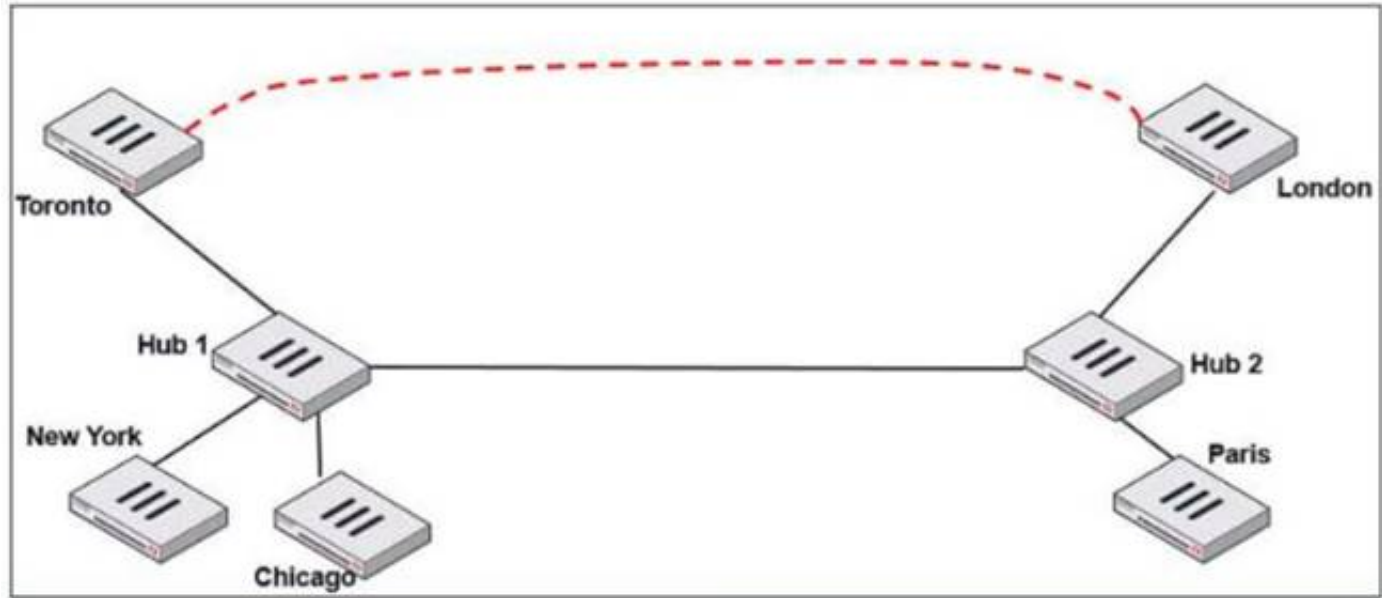
3.874431 T_INET_1_0 in 10.0.1.101 -> 10.1.0.7: icmp: echo request
3.874630 port5 out 10.0.1.101 -> 10.1.0.7: icmp: echo request
3.874895 T_INET_0_0 in 10.0.1.101 -> 10.1.0.7: icmp: echo request
3.875125 T_MPLS_0 in 10.0.1.101 -> 10.1.0.7: icmp: echo request
3.875054 port5 in 10.1.0.7 -> 10.0.1.101: icmp: echo reply
3.875308 T_INET_1_0 out 10.1.0.7 -> 10.0.1.101: icmp: echo reply
    
```

Exhibit A shows the packet duplication rule configuration, the SD-WAN zone status output, and the sniffer output on FortiGate acting as the sender. Exhibit B shows the sniffer output on a FortiGate acting as the receiver. The administrator configured packet duplication on both FortiGate devices. The sniffer output on the sender FortiGate shows that FortiGate forwards an ICMP echo request packet over three overlays, but it only receives one reply packet through T_INET_1_0. Based on the output shown in the exhibits, which two reasons can cause the observed behavior? (Choose two.)

- A. On the receiver FortiGate, packet-de-duplication is enabled.
- B. The ICMP echo request packets sent over T_INET_0_0 and T_MPLS_0 were dropped along the way.
- C. The ICMP echo request packets received over T_INET_0_0 and T_MPLS_0 were offloaded to NPU.
- D. On the sender FortiGate, duplication-max-num is set to 3.

Answer: AD

NEW QUESTION 2
Refer to the exhibit.



Two hub-and-spoke groups are connected through a site-to-site IPsec VPN between Hub 1 and Hub 2. Which two configuration settings are required for Toronto and London spokes to establish an ADVPN shortcut? (Choose two.)

- A. On the hubs, auto-discovery-sender must be enabled on the IPsec VPNs to spokes.
- B. On the spokes, auto-discovery-receiver must be enabled on the IPsec VPN to the hub.
- C. auto-discovery-forwarder must be enabled on all IPsec VPNs.
- D. On the hubs, net-device must be enabled on all IPsec VPNs.

Answer: AB

NEW QUESTION 3

What is the route-tag setting in an SD-WAN rule used for?

- A. To indicate the routes for health check probes.
- B. To indicate the destination of a rule based on learned BGP prefixes.
- C. To indicate the routes that can be used for routing SD-WAN traffic.
- D. To indicate the members that can be used to route SD-WAN traffic.

Answer: B

NEW QUESTION 4

Which are three key routing principles in SD-WAN? (Choose three.)

- A. FortiGate performs route lookups for new sessions only.
- B. Regular policy routes have precedence over SD-WAN rules.
- C. SD-WAN rules have precedence over ISDB routes.
- D. By default, SD-WAN members are skipped if they do not have a valid route to the destination.
- E. By default, SD-WAN rules are skipped if the best route to the destination is not an SD-WAN member.

Answer: BDE

NEW QUESTION 5

In the default SD-WAN minimum configuration, which two statements are correct when traffic matches the default implicit SD-WAN rule? (Choose two)

- A. Traffic has matched none of the FortiGate policy routes.
- B. Matched traffic failed RPF and was caught by the rule.
- C. The FIB lookup resolved interface was the SD-WAN interface.
- D. An absolute SD-WAN rule was defined and matched traffic.

Answer: AC

NEW QUESTION 6

Refer to the exhibit.

```
branch1_fgt # diagnose sys sdwan service 3

Service(3): Address Mode(IPV4) flags=0x200 use-shortcut-sla
  Gen(2), TOS(0x0/0x0), Protocol(0: 1->65535), Mode(priority), link-cost-factor(packet-
loss), link-cost-threshold(0), health-check(VPN_PING)
  Members(3):
    1: Seq_num(3 T_INET_0_0), alive, packet loss: 2.000%, selected
    2: Seq_num(4 T_MPLS_0), alive, packet loss: 4.000%, selected
    3: Seq_num(5 T_INET_1_0), alive, packet loss: 12.000%, selected
  Src address(1):
    10.0.1.0-10.0.1.255

  Dst address(1):
    10.0.0.0-10.255.255.255

branch1_fgt (3) # show
config service
  edit 3
    set name "Corp"
    set mode priority
    set dst "Corp-net"
    set src "LAN-net"
    set health-check "VPN_PING"
    set link-cost-factor packet-loss
    set link-cost-threshold 0
    set priority-members 5 3 4
  next
end
```

The exhibit shows the SD-WAN rule status and configuration.

Based on the exhibit, which change in the measured packet loss will make T_INET_1_0 the new preferred member?

- A. When all three members have the same packet loss.
- B. When T_INET_0_0 has 4% packet loss.
- C. When T_INET_0_0 has 12% packet loss.
- D. When T_INET_1_0 has 4% packet loss.

Answer: A

NEW QUESTION 7

Which two statements are correct when traffic matches the implicit SD-WAN rule? (Choose two.)

- A. The sdwan_service_id flag in the session information is 0.
- B. All SD-WAN rules have the default setting enabled.
- C. Traffic does not match any of the entries in the policy route table.
- D. Traffic is load balanced using the algorithm set for the v4-ecmp-mode setting.

Answer: AC

Explanation:

sdwan_service_id is 0 = match SD-WAN implicit rule, study guide 7.0 page 120, 7.2 page 149 SD-WAN rules internally are interpreted as a Policy route, so when the traffic doesn't match with any policy route, it will be flowing by implicit policy.

NEW QUESTION 8

Which two settings can you configure to speed up routing convergence in BGP? (Choose two.)

- A. update-source
- B. set-route-tag
- C. holdtime-timer
- D. link-down-failover

Answer: CD

NEW QUESTION 9

What are two common use cases for remote internet access (RIA)? (Choose two.)

- A. Provide direct internet access on spokes
- B. Provide internet access through the hub
- C. Centralize security inspection on the hub
- D. Provide thorough inspection on spokes

Answer: BC

NEW QUESTION 10

Which components make up the secure SD-WAN solution?

- A. Application, antivirus, and URL, and SSL inspection
- B. Datacenter, branch offices, and public cloud
- C. FortiGate, FortiManager, FortiAnalyzer, and FortiDeploy
- D. Telephone, ISDN, and telecom network.

Answer: C

NEW QUESTION 10

Which diagnostic command can you use to show the configured SD-WAN zones and their assigned members?

- A. diagnose sys sdwan zone
- B. diagnose sys sdwan service
- C. diagnose sys sdwan member
- D. diagnose sys sdwan interface

Answer: A

NEW QUESTION 12

Refer to the exhibits.
Exhibit A

Edit Performance SLA

Name Level3_DNS

IP Version IPv4 IPv6

Probe Mode Active Passive Prefer Passive

Protocol Ping TCP ECHO UDP ECHO HTTP TWA

Server

Participants All SD-WAN Members Specify

port1
port2

2 Entries

Enable Probe Packets ☒

SLA Targets + Add Target

Link Status

Interval Milliseconds

Failure Before Inactive (max 3600)

Restore Link After (max 3600)

Action When Inactive

Update Static Route ☒

Cascade Interfaces ☒

Exhibit B

```
branch1_fgt # diagnose sys sdwan member | grep port
Member(1): interface: port1, flags=0x0 , gateway: 192.2.0.2, priority: 0 1024, weight: 0
Member(2): interface: port2, flags=0x0 , gateway: 192.2.0.10, priority: 0 1024, weight: 0

branch1_fgt # get router info routing-table all | grep port
S*      0.0.0.0/0 [1/0] via 192.2.0.2, port1
         [1/0] via 192.2.0.10, port2
S       8.8.8.8/32 [10/0] via 192.2.0.11, port2
C       10.0.1.0/24 is directly connected, port5
S       172.16.0.0/16 [10/0] via 172.16.0.2, port4
C       172.16.0.0/29 is directly connected, port4
C       192.2.0.0/29 is directly connected, port1
C       192.2.0.8/29 is directly connected, port2
C       192.168.0.0/24 is directly connected, port10

branch1_fgt # diagnose sys sdwan health-check status Level3_DNS
Health Check(Level3_DNS):
Seq(1 port1): state(alive), packet-loss(0.000%) latency(1.919), jitter(0.137), bandwidth-
up(10238), bandwidth-dw(10238), bandwidth-bi(20476) sla_map=0x0
Seq(2 port2): state(alive), packet-loss(0.000%) latency(1.509), jitter(0.101), bandwidth-
up(10238), bandwidth-dw(10238), bandwidth-bi(20476) sla_map=0x0
```

Exhibit A shows the SD-WAN performance SLA and exhibit B shows the SD-WAN member status, the routing table, and the performance SLA status. If port2 is detected dead by FortiGate, what is the expected behavior?

- A. Port2 becomes alive after three successful probes are detected.
- B. FortiGate removes all static routes for port2.
- C. The administrator manually restores the static routes for port2, if port2 becomes alive.
- D. Host 8.8.8.8 is reachable through port1 and port2.

Answer: B

Explanation:

This is due to Update static route is enable which removes the static route entry referencing the interface if the interface is dead

NEW QUESTION 16

Which two statements about the SD-WAN zone configuration are true? (Choose two.)

- A. The service-sla-tie-break setting enables you to configure preferred member selection based on the best route to the destination.
- B. You can delete the default zones.
- C. The default zones are virtual-wan-link and SASE.
- D. An SD-WAN member can belong to two or more zones.

Answer: AC

NEW QUESTION 18

Refer to the exhibit.

```
branch1_fgt # diagnose sys sdwan service 3

Service(3): Address Mode(IPV4) flags=0x200 use-shortcut-sla
  Gen(5), TOS(0x0/0x0), Protocol(0: 1->65535), Mode(priority), link-cost-
factor(latency), link-cost-threshold(10), health-check(VPN_PING)
  Members(3):
    1: Seq_num(3 T_INET_0_0), alive, latency: 101.349, selected
    2: Seq_num(4 T_INET_1_0), alive, latency: 151.278, selected
    3: Seq_num(5 T_MPLS_0), alive, latency: 200.984, selected
  Src address(1):
    10.0.1.0-10.0.1.255

  Dst address(1):
    10.0.0.0-10.255.255.255

branch1_fgt (3) # show
config service
  edit 3
    set name "Corp"
    set mode priority
    set dst "Corp-net"
    set src "LAN-net"
    set health-check "VPN_PING"
    set priority-members 3 4 5
  next
end
```

The exhibit shows the SD-WAN rule status and configuration.

Based on the exhibit, which change in the measured latency will make T_MPLS_0 the new preferred member?

- A. When T_INET_0_0 and T_MPLS_0 have the same latency.
- B. When T_MPLS_0 has a latency of 100 ms.
- C. When T_INET_0_0 has a latency of 250 ms.
- D. When T_MPLS_0 has a latency of 80 ms.

Answer: D

NEW QUESTION 23

Refer to the exhibit.

```
config system sdwan
  set fail-detect enable
  set fail-alert-interfaces "port5"
  config health-check
    edit "Level3_DNS"
      set update-cascade-interface enable
      set members 1 2
    next
    edit "HQ"
      set update-cascade-interface enable
      set members 3
    next
  end
end
```

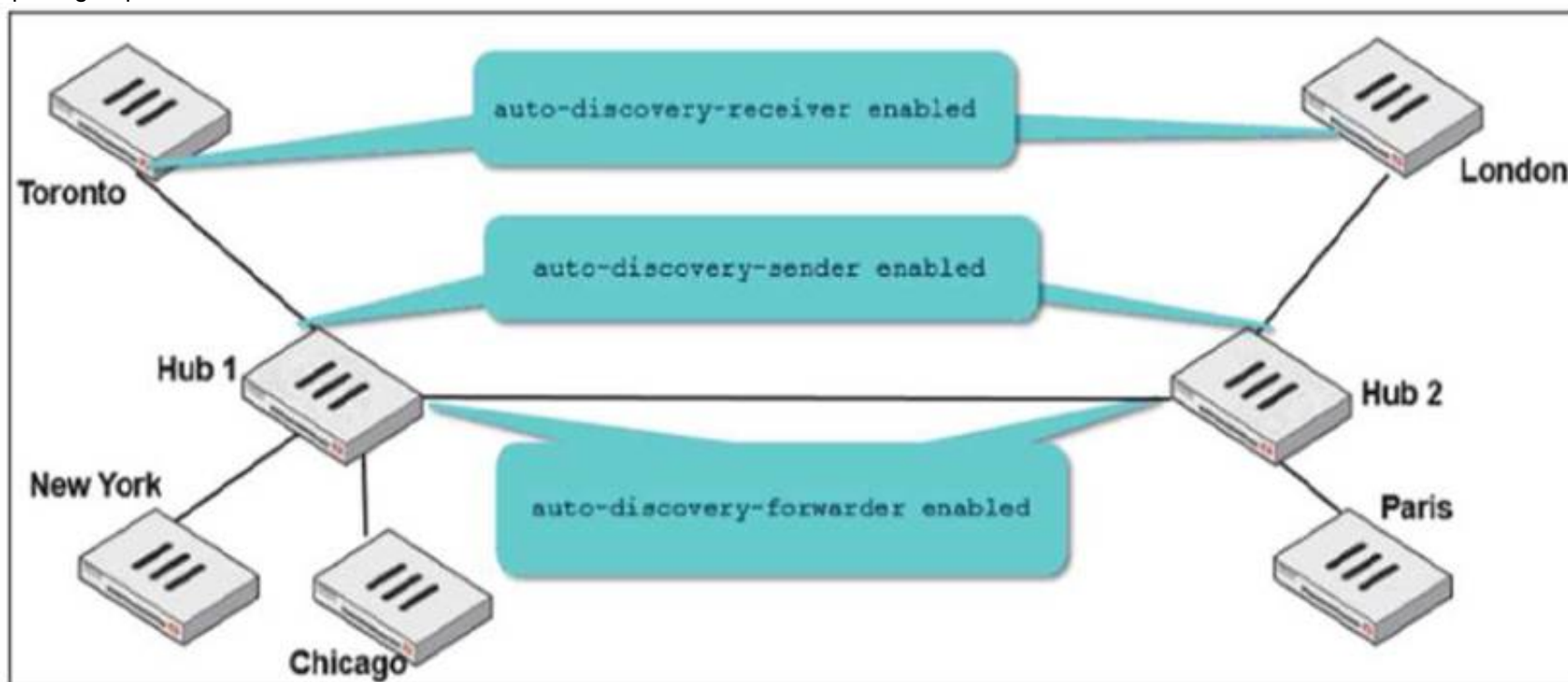
Based on the exhibit, which action does FortiGate take?

- A. FortiGate bounces port5 after it detects all SD-WAN members as dead.
- B. FortiGate fails over to the secondary device after it detects all SD-WAN members as dead.
- C. FortiGate brings up port5 after it detects all SD-WAN members as alive.
- D. FortiGate brings down port5 after it detects all SD-WAN members as dead.

Answer: B

NEW QUESTION 25

Two hub-and-spoke groups are connected through a site-to-site IPsec VPN between Hub 1 and Hub 2. The administrator configured ADVPN on both hub-and-spoke groups.



Which two outcomes are expected if a user in Toronto sends traffic to London? (Choose two.)

- A. London generates an IKE information message that contains the Toronto public IP address.
- B. Traffic from Toronto to London triggers the dynamic negotiation of a direct site-to-site VPN.
- C. Toronto needs to establish a site-to-site tunnel with Hub 2 to bypass Hub 1.
- D. The first packets from Toronto to London are routed through Hub 1 then to Hub 2.

Answer: BD

NEW QUESTION 30

Which CLI command do you use to perform real-time troubleshooting for ADVPN negotiation?

- A. get router info routing-table all
- B. diagnose debug application ike
- C. diagnose vpn tunnel list
- D. get ipsec tunnel list

Answer: B

Explanation:

IKE real-time debug - useful when debugging ADVPN shortcut messages and spoke-to-spoke negotiations.

- diagnose debug console timestamp enable
- diagnose vpn ike log filter clear
- diagnose vpn ike log filter mdst-addr4 <ip.of.hub> <ip.of.spoke>
- diagnose debug application ike -1
- diagnose debug enable

NEW QUESTION 35

Which two protocols in the IPsec suite are most used for authentication and encryption? (Choose two.)

- A. Encapsulating Security Payload (ESP)
- B. Secure Shell (SSH)
- C. Internet Key Exchange (IKE)
- D. Security Association (SA)

Answer: AC

NEW QUESTION 40

Which statement is correct about SD-WAN and ADVPN?

- A. Routes for ADVPN shortcuts must be manually configured.
- B. SD-WAN can steer traffic to ADVPN shortcuts, established over IPsec overlays, configured as SD-WAN members.
- C. SD-WAN does not monitor the health and performance of ADVPN shortcuts.
- D. You must use IKEv2 on IPsec tunnels.

Answer: B

NEW QUESTION 43

Which SD-WAN setting enables FortiGate to delay the recovery of ADVPN shortcuts?

- A. hold-down-time
- B. link-down-failover
- C. auto-discovery-shortcuts
- D. idle-timeout

Answer: A

NEW QUESTION 47

Refer to the exhibit.

```
config system settings
    set firewall-session-dirty check-new
end
```

Based on the exhibit, which two actions does FortiGate perform on sessions after a firewall policy change? (Choose two.)

- A. FortiGate flushes all sessions.
- B. FortiGate terminates the old sessions.
- C. FortiGate does not change existing sessions.
- D. FortiGate evaluates new sessions.

Answer: CD

Explanation:

FortiGate not to flag existing impacted session as dirty by setting firewall-session-dirty to check new. The results is that FortiGate evaluates only new session against the new firewall policy.

NEW QUESTION 52

Refer to the exhibit.


```
# diagnose sys session list

session info: proto=6 proto_state=01 duration=39 expire=3593 timeout=3600 flags=00000000
socktype=0 sockport=0 av_idx=0 use=4
state=may_dirty npu
origin->sink: org pre->post, reply pre->post dev=7->5/5->7 gwy=10.10.10.1/10.9.31.160
hook=pre dir=org act=noop 10.9.31.160:7932->10.0.1.7:22(0.0.0.0:0)
hook=post dir=reply act=noop 10.0.1.7:22->10.9.31.160:7932(0.0.0.0:0)
pos/(before,after) 0/(0,0), 0/(0,0)
misc=0 policy_id=1 auth_info=0 chk_client_info=0 vd=0
serial=00045e02 tos=ff/ff app_list=0 app=0 url_cat=0
sdwan_mbr_seq=1 sdwan_service_id=1
rpd_b_link_id=80000000 rpd_b_svc_id=0 ngfwid=n/a
npu_state=0x4000c00
npu_info: flag=0x81/0x81, offload=8/8, ips_offload=0/0, epid=64/76, ipid=76/64,
vlan=0x0000/0x0000
vlifid=76/64, vtag_in=0x0000/0x0000 in_npu=1/1, out_npu=1/1, fwd_en=0/0, qid=2/2
reflect info 0:
dev=7->6/6->7
npu_state=0x4000800
npu_info: flag=0x00/0x81, offload=0/8, ips_offload=0/0, epid=0/76, ipid=0/65, vlan=0x0000/0x0000
vlifid=0/65, vtag_in=0x0000/0x0000 in_npu=0/1, out_npu=0/1, fwd_en=0/0, qid=0/2
total reflect session num: 1
total session 1

# diagnose netlink interface list

if=port1 family=00 type=1 index=5 mtu=1500 link=0 master=0
if=port2 family=00 type=1 index=6 mtu=1500 link=0 master=0
if=port3 family=00 type=1 index=7 mtu=1500 link=0 master=0
```

The exhibit shows the details of a session and the index numbers of some relevant interfaces on a FortiGate appliance that supports hardware offloading. Based on the information shown in the exhibits, which two statements about the session are true? (Choose two.)

- A. The reply direction of the asymmetric traffic flows from port2 to port3.
- B. The auxiliary session can be offloaded to hardware.
- C. The original direction of the symmetric traffic flows from port3 to port2.
- D. The main session cannot be offloaded to hardware.

Answer: AB

NEW QUESTION 55

Refer to the exhibit.

```
config router bgp
  set as 65000
  set router-id 10.1.0.1
  set ibgp-multipath enable
  set additional-path enable
  set additional-path-select 3
  config neighbor-group
    edit "Branches_INET_0"
      set interface "T_INET_0_0"
      set remote-as 65000
      set update-source "T_INET_0_0"
    next
    edit "Branches_INET_1"
      set interface "T_INET_1_0"
      set remote-as 65000
      set update-source "T_INET_1_0"
    next
    edit "Branches_MPLS"
      set interface "T_MPLS_0"
      set remote-as 65000
      set update-source "T_MPLS_0"
    next
  end
  config neighbor-range
    edit 1
      set prefix 10.201.1.0 255.255.255.0
      set neighbor-group "Branches_INET_0"
    next
    edit 2
      set prefix 10.202.1.0 255.255.255.0
      set neighbor-group "Branches_INET_1"
    next
    edit 3
      set prefix 10.203.1.0 255.255.255.0
      set neighbor-group "Branches_MPLS"
    next
  end
  ...
end
```

The exhibit shows the BGP configuration on the hub in a hub-and-spoke topology. The administrator wants BGP to advertise prefixes from spokes to other spokes over the IPsec overlays, including additional paths. However, when looking at the spoke routing table, the administrator does not see the prefixes from other spokes and the additional paths.

Based on the exhibit, which three settings must the administrator configure inside each BGP neighbor group so spokes can learn other spokes prefixes and their additional paths? (Choose three.)

- A. Set additional-path to send
- B. Enable route-reflector-client
- C. Set advertisement-interval to the number of additional paths to advertise
- D. Set adv-additional-path to the number of additional paths to advertise
- E. Enable soft-reconfiguration

Answer: ABD

NEW QUESTION 57

What are two benefits of using the Internet service database (ISDB) in an SD-WAN rule? (Choose two.)

- A. The ISDB is dynamically updated and reduces administrative overhead.
- B. The ISDB requires application control to maintain signatures and perform load balancing.
- C. The ISDB applies rules to traffic from specific sources, based on application type.
- D. The ISDB contains the IP addresses and port ranges of well-known internet services.

Answer: AD

NEW QUESTION 59

Refer to the exhibit.

```
config vpn ipsec phase1-interface
edit "FIRST_VPN"
    set type dynamic
    set interface "port1"
    set peertype any
    set proposal aes128-sha256 aes256-sha38
    set dhgrp 14 15 19
    set xauthtype auto
    set authusrgrp "first-group"
    set psksecret fortinet1
next
edit "SECOND_VPN"
    set type dynamic
    set interface "port1"
    set peertype any
    set proposal aes128-sha256 aes256-sha38
    set dhgrp 14 15 19
    set xauthtype auto
    set authusrgrp "second-group"
    set psksecret fortinet2
next
edit
```

FortiGate has multiple dial-up VPN interfaces incoming on port1 that match only FIRST_VPN.

Which two configuration changes must be made to both IPsec VPN interfaces to allow incoming connections to match all possible IPsec dial-up interfaces? (Choose two.)

- A. Specify a unique peer ID for each dial-up VPN interface.
- B. Use different proposals are used between the interfaces.
- C. Configure the IKE mode to be aggressive mode.
- D. Use unique Diffie Hellman groups on each VPN interface.

Answer: AC

NEW QUESTION 62

Refer to the exhibits.
Exhibit A

Edit Traffic Shaping Policy

IP Version: **IPv4** IPv6

Name: Limit_Youtube

Status: **Enable** Disable

Comments:
 0/255

If Traffic Matches:

Source Internet Service: ☐

Source Address: LAN-net

Source User:

Source User Group:

Destination Internet Service: ☐

Destination Address: all

Schedule:

Service: ALL

Application: YouTube

Application Category:

Application Group:

URL Category:

Type Of Service: 0x00

Type Of Service Mask: 0x00

Then:

Action: **Apply Shaper** Assign Group

Outgoing Interface: underlay

Shared Shaper: low-priority

Reverse Shaper: low-priority

Per-IP Shaper:

Differentiated Services: ☐

Differentiated Services Reverse: ☐

Exhibit B

Edit Firewall Policy

ID: 1

Name: DIA

ZTNA: **Disable** Full ZTNA IP/MAC filtering

Incoming Interface: LAN

Outgoing Interface: underlay

Source Internet Service: ☐

IPv4 Source Address: LAN-net

IPv6 Source Address:

Source User:

Source User Group:

FSSO Groups:

Destination Internet Service: ☐

IPv4 Destination Address: all

IPv6 Destination Address:

Service: ALL

Schedule: always

Action: Deny **Accept** IPSEC

Inspection Mode: **Flow-based** Proxy-based

Firewall/Network Options

NAT: ☒ NAT NAT46 NAT64

IP Pool Configuration: **Use Outgoing Interface Address** Use Dynamic IP Pool

Preserve Source Port: ☐

Protocol Options: default

Disclaimer Options

Display Disclaimer: ☐

Security Profiles

SSL/SSH Inspection: deep-inspection

Decrypted Traffic Mirror:

Traffic Shaping Options

Shared Shaper:

Reverse Shaper:

Per-IP Shaper:

Logging Options

Log Allowed Traffic: No Log Log Security Events **Log All Sessions**

☐ Capture Packets

☐ Generate Logs when Session Starts

Exhibit A shows the traffic shaping policy and exhibit B shows the firewall policy.
The administrator wants FortiGate to limit the bandwidth used by YouTube. When testing, the administrator determines that FortiGate does not apply traffic shaping on YouTube traffic.
Based on the policies shown in the exhibits, what configuration change must be made so FortiGate performs traffic shaping on YouTube traffic?

- A. Destination internet service must be enabled on the traffic shaping policy.
- B. Application control must be enabled on the firewall policy.
- C. Web filtering must be enabled on the firewall policy.
- D. Individual SD-WAN members must be selected as the outgoing interface on the traffic shaping policy.

Answer: B

NEW QUESTION 65

Refer to the exhibit.

```
# get router info routing-table all
...
B      10.0.2.0/24 [200/0] via 10.201.1.2 [3] (recursive via VPN0 tunnel 100.64.1.1), 00:00:54
      [200/0] via 10.202.1.2 [3] (recursive via VPN1 tunnel 100.64.1.9), 00:00:54
      [200/0] via 10.203.1.1 [3] (recursive via VPN2 tunnel 172.16.1.5), 00:00:54
...
```

The device exchanges routes using IBGP.
Which two statements are correct about the IBGP configuration and routing information on the device? (Choose two.)

- A. Each BGP route is three hops away from the destination.
- B. ibgp-multipath is disabled.
- C. additional-path is enabled.
- D. You can run the get router info routing-table database command to display the additional paths.

Answer: CD

NEW QUESTION 69

Which two statements are true about using SD-WAN to steer local-out traffic? (Choose two.)

- A. FortiGate does not consider the source address of the packet when matching an SD-WAN rule for local-out traffic.
- B. By default, local-out traffic does not use SD-WAN.
- C. By default, FortiGate does not check if the selected member has a valid route to the destination.
- D. You must configure each local-out feature individually, to use SD-WAN.

Answer: BD

NEW QUESTION 73

Refer to the exhibit.

Edit Performance SLA

Name

VPN_HTTP

IP Version

IPv4 IPv6

Probe Mode

Active Passive Prefer Passive

Protocol

Ping TCP ECHO UDP ECHO HTTP TWAMP DNS TC

Server

10.1.0.7

Port

0

Participants

All SD-WAN Members Specify

T_INET_0_0

T_INET_1_0

T_MPLS_0

3 Entries Selected

Enable Probe Packets

http-get

/

http-match

successfully

Based on the exhibit, which two statements are correct about the health of the selected members? (Choose two.)

- A. After FortiGate switches to active mode, FortiGate never fails back to passive monitoring.
- B. During passive monitoring, FortiGate can't detect dead members.
- C. FortiGate can offload the traffic that is subject to passive monitoring to hardware.
- D. FortiGate passively monitors the member if TCP traffic is passing through the member.

Answer: BD

NEW QUESTION 77

Which two interfaces are considered overlay links? (Choose two.)

- A. LAG
- B. IPsec
- C. Physical
- D. GRE

Answer: BD

NEW QUESTION 78

.....

Thank You for Trying Our Product

We offer two products:

1st - We have Practice Tests Software with Actual Exam Questions

2nd - Questions and Answers in PDF Format

NSE7_SDW-7.0 Practice Exam Features:

- * NSE7_SDW-7.0 Questions and Answers Updated Frequently
- * NSE7_SDW-7.0 Practice Questions Verified by Expert Senior Certified Staff
- * NSE7_SDW-7.0 Most Realistic Questions that Guarantee you a Pass on Your FirstTry
- * NSE7_SDW-7.0 Practice Test Questions in Multiple Choice Formats and Updatesfor 1 Year

100% Actual & Verified — Instant Download, Please Click
[Order The NSE7_SDW-7.0 Practice Test Here](#)