

## Exam Questions AZ-801

Configuring Windows Server Hybrid Advanced Services

<https://www.2passeasy.com/dumps/AZ-801/>



#### NEW QUESTION 1

##### DRAG DROP

You are planning the implementation of Cluster2 to support the on-premises migration plan.

You need to ensure that the disks on Cluster2 meet the security requirements.

In which order should you perform the actions? To answer, move all actions from the list of actions to the answer area and arrange them in the correct order.

Select and Place:

Actions	Answer Area
Add a disk resource to the cluster.	
Enable BitLocker on the volume.	
Update the BitLockerProtectorInfo property of the volume.	
Create a Cluster Shared Volume (CSV).	
Put the disk in maintenance mode.	

- A. Mastered
- B. Not Mastered

**Answer:** A

##### Explanation:

Reference: <https://docs.microsoft.com/en-us/windows-server/failover-clustering/bitlocker-on-csv-in-ws-2022>

#### NEW QUESTION 2

##### HOTSPOT

You need to implement a security policy solution to authorize the applications. The solution must meet the security requirements.

Which service should you use to enforce the security policy, and what should you use to manage the policy settings? To answer, select the appropriate options in the answer area.

NOTE: Each correct selection is worth one point.

Hot Area:

##### Answer Area

Enforce the security policy:	<div>Microsoft Defender Application Control</div> <div>Microsoft Defender Application Guard</div> <div>Microsoft Defender Credential Guard</div> <div>Microsoft Defender for Endpoint</div>
Manage the policy settings:	<div>Configuration profiles in Microsoft Intune</div> <div>Compliance policies in Microsoft Intune</div> <div>Group Policy Objects (GPOs)</div>

- A. Mastered
- B. Not Mastered

**Answer:** A

##### Explanation:

Reference: <https://docs.microsoft.com/en-us/windows/security/threat-protection/windows-defender-application-control/wdacand-applockeroverview>

#### NEW QUESTION 3

You are remediating the firewall security risks to meet the security requirements.

What should you configure to reduce the risks?

- A. a Group Policy Object (GPO)
- B. adaptive network hardening in Microsoft Defender for Cloud
- C. a network security group (NSG) in Sub1
- D. an Azure Firewall policy

**Answer:** A

##### Explanation:

Firewall rules configured in a Group Policy Object cannot be modified by local server administrators.

Reference: <https://docs.microsoft.com/en-us/windows/security/threat-protection/windows-firewall/create-an-inbound-port-rule>

#### NEW QUESTION 4

##### DRAG DROP

You need to meet the technical requirements for Cluster2.

Which four actions should you perform in sequence before you can enable replication? To answer, move the appropriate actions from the list of actions to the answer area and arrange them in the correct order.

Select and Place:

Actions	Answer Area
Create an Azure Recovery Services vault.	
Install Azure Connected Machine agents.	
Install and register Azure Site Recovery Providers.	
Create and associate replication policies.	
Create a Hyper-V site.	

- A. Mastered  
B. Not Mastered

**Answer:** A

**Explanation:**

Reference:

<https://docs.microsoft.com/en-us/azure/site-recovery/hyper-v-azure-tutorial>

**NEW QUESTION 5**

**HOTSPOT**

You are planning the [www.fabrikam.com](http://www.fabrikam.com) website migration to support the Azure migration plan.

How should you configure WebApp1? To answer, select the appropriate options in the answer area.

NOTE: Each correct selection is worth one point.

Hot Area:

Answer Area
To enable WebApp1 to handle requests for the website:
<div>Add a custom domain name.</div> <div>Create a deployment slot.</div> <div>Create a private endpoint.</div>
To point client connections to WebApp1:
<div>Add HTTP redirect rules on WEB1 and WEB2.</div> <div>Implement Azure Front Door.</div> <div>Implement Azure Traffic Manager.</div> <div>Modify a DNS record.</div>

- A. Mastered  
B. Not Mastered

**Answer:** A

**Explanation:**

Box 1: Add a custom domain name

To migrate [www.fabrikam.com](http://www.fabrikam.com) website to an Azure App Service web app, you need to add Fabrikam.com as a custom domain in Azure. This will make the domain name available to use in the web app.

Box 2: Modify a DNS record

You need to change the DNS record for [www.fabrikam.com](http://www.fabrikam.com) to point to the Azure web app. HTTP redirect rules won't work because WEB1 and WEB2 will be decommissioned.

Reference: <https://docs.microsoft.com/en-us/azure/app-service/app-service-web-tutorial-custom-domain?tabs=a%2Cazurecli>

**NEW QUESTION 6**

**HOTSPOT**

You are planning the migration of APP3 and APP4 to support the Azure migration plan.

What should you do on Cluster1 and in Azure before you perform the migration? To answer, select the appropriate options in the answer area.

NOTE: Each correct selection is worth one point.

Hot Area:

## Answer Area

On Cluster1:

Configure Azure Network Adapter.  
 Create a Point-to-Site (P2S) VPN connection to Vnet1.  
 Import the Azure Migrate appliance.  
 Install the Azure File Sync agent.  
 Install the Windows Server Migration Tools.

In Azure:

Create a premium block blobs Azure Storage account.  
 Create a private endpoint.  
 Create a VPN gateway.  
 Create an Azure Migrate project.

- A. Mastered
- B. Not Mastered

**Answer:** A

### Explanation:

Reference:

<https://docs.microsoft.com/en-us/azure/migrate/tutorial-discover-hyper-v>

## NEW QUESTION 7

### HOTSPOT

You need to implement alerts for the domain controllers. The solution must meet the technical requirements.

What should you do on the domain controllers, and what should you create on Azure? To answer, select the appropriate options in the answer area.

NOTE: Each correct selection is worth one point.

Hot Area:

## Answer Area

On the domain controllers:

Create a Data Collector Set in Performance Monitor.  
 Modify the Performance Monitor Users group.  
 Install the Azure Monitor agent.

In Azure:

Create an Azure SQL database.  
 Create a Storage Sync Service.  
 Create an Azure Log Analytics workspace.  
 Create an Azure Storage account.

- A. Mastered
- B. Not Mastered

**Answer:** A

### Explanation:

Reference: <https://docs.microsoft.com/en-us/azure/azure-monitor/agents/azure-monitor-agentoverview?tabs=PowerShellWindows>

## NEW QUESTION 8

Note: This question is part of a series of questions that present the same scenario. Each question in the series contains a unique solution that might meet the stated goals. Some question sets might have more than one correct solution, while others might not have a correct solution.

After you answer a question in this section, you will NOT be able to return to it. As a result, these questions will not appear in the review screen.

You have a server named Server1 that runs Windows Server.

You need to ensure that only specific applications can modify the data in protected folders on Server1. Solution: From Virus & threat protection, you configure Tamper Protection Does this meet the goal?

- A. Yes
- B. No

**Answer:** B

### Explanation:

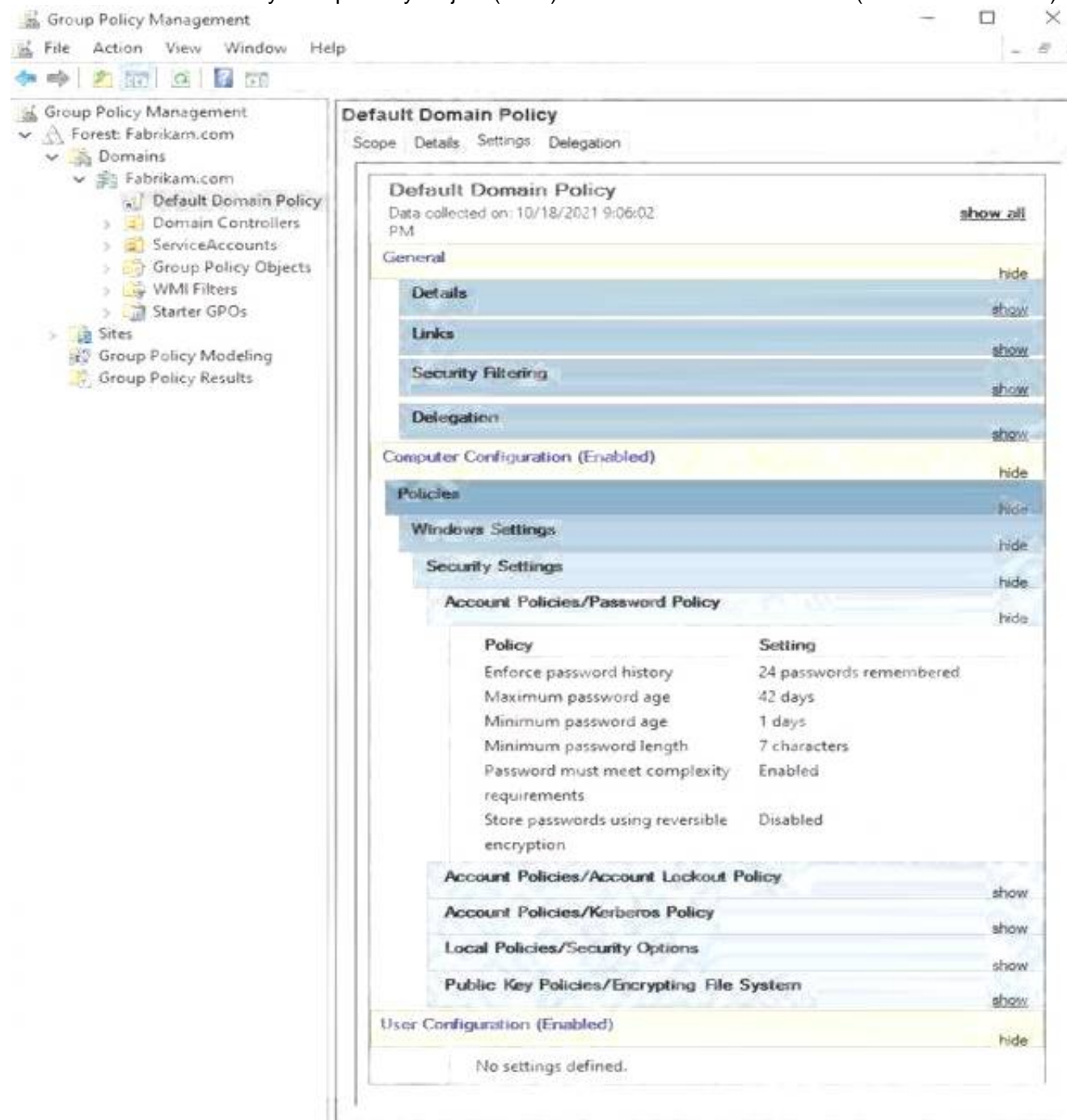
Reference: <https://docs.microsoft.com/en-us/microsoft-365/security/defender-endpoint/customize-controlledfolders?view=o365-worldwide>



## NEW QUESTION 9

### HOTSPOT

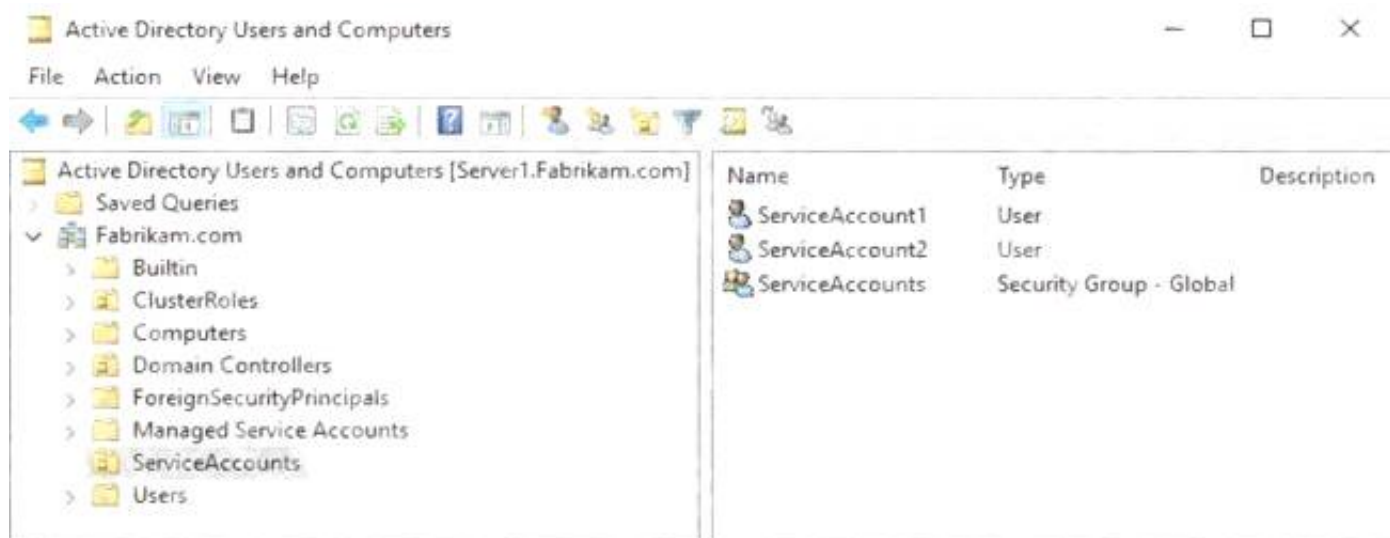
The Default Domain Policy Group Policy Object (GPO) is shown in the GPO exhibit. (Click the GPO tab.)



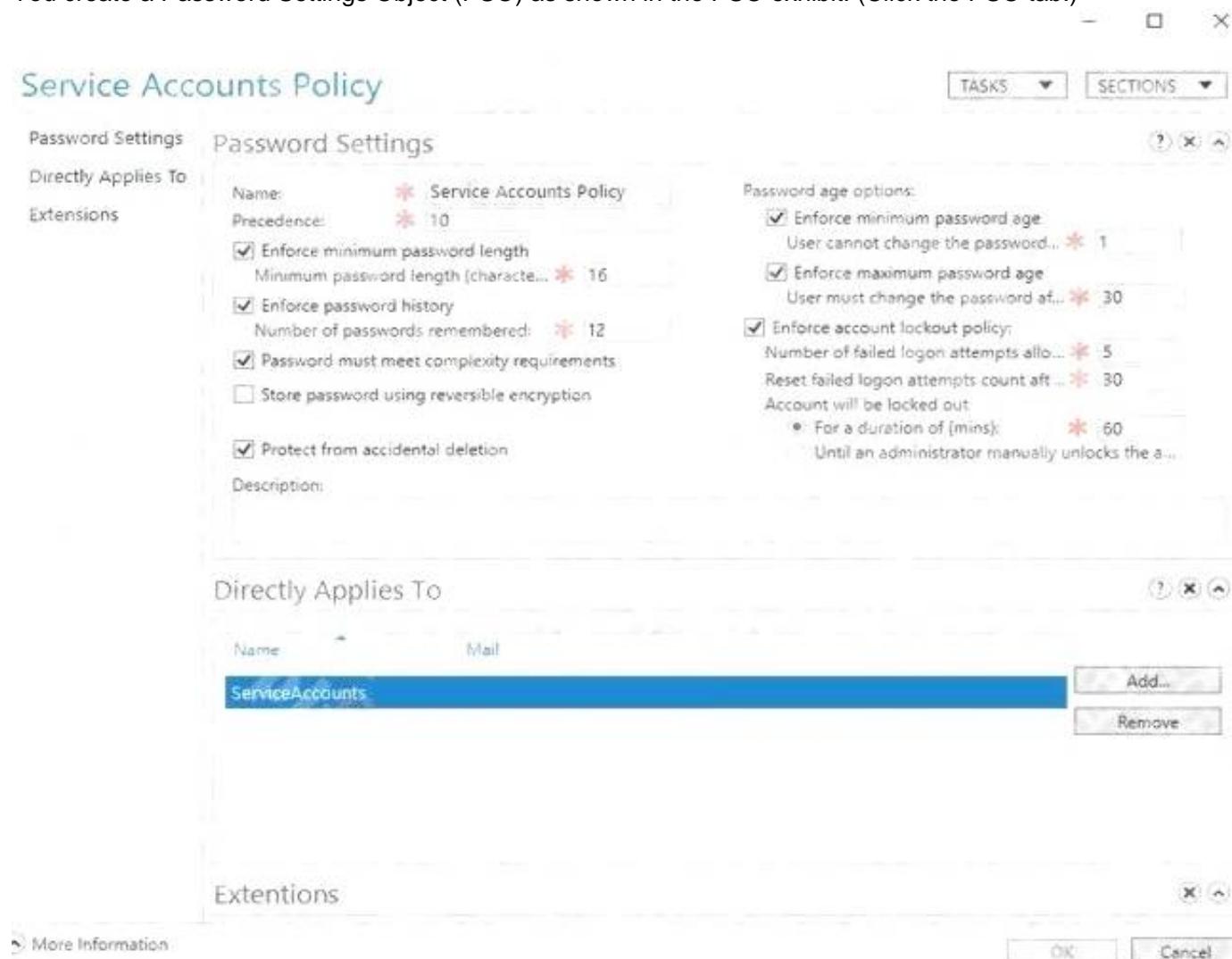
The members of a group named Service Accounts are shown in the Group exhibit. (Click the Group tab.)



An organizational unit (OU) named ServiceAccounts is shown in the OU exhibit. (Click the OU tab.)



You create a Password Settings Object (PSO) as shown in the PSO exhibit. (Click the PSO tab.)



For each of the following statements, select Yes if the statement is true. Otherwise, select No.

NOTE: Each correct selection is worth one point.

Hot Area:

Answer Area

Statements	Yes	No
The password of ServiceAccount1 must be at least 16 characters long.	<input type="radio"/>	<input type="radio"/>
The password of ServiceAccount2 must be at least 16 characters long.	<input type="radio"/>	<input type="radio"/>
Accounts that have the Service Accounts Policy applied can change their password to P@\$w0rd1.	<input type="radio"/>	<input type="radio"/>

- A. Mastered
- B. Not Mastered

Answer: A

Explanation:

Reference: [https://docs.microsoft.com/en-us/windows-server/identity/ad-ds/get-started/adac/introduction-to-active-directoryadministrativecenterenhancements--level-100-#fine\\_grained\\_pswd\\_policy\\_mgmt](https://docs.microsoft.com/en-us/windows-server/identity/ad-ds/get-started/adac/introduction-to-active-directoryadministrativecenterenhancements--level-100-#fine_grained_pswd_policy_mgmt)

## NEW QUESTION 10

### HOTSPOT

Your network contains an Active Directory Domain Services (AD DS) domain named contoso.com. The domain contains the organizational units (OUs) shown in the following table.

Name	Contents
Domain Controllers	All the domain controllers in the domain
Domain Servers	All the servers that run Windows Server in the domain
Domain Client Computers	All the client computers that run Windows 10 in the domain
Domain Users	All the users in the domain

In the domain, you create the Group Policy Objects (GPOs) shown in the following table.

Name	IPsec setting
GPO1	Require authentication by using Kerberos V5 for inbound connections
GPO2	Request authentication by using Kerberos V5 for inbound connections
GPO3	Require authentication by using X.509 certificates for inbound connections
GPO4	Request authentication by using X.509 certificates for inbound connections

You need to implement IPsec authentication to ensure that only authenticated computer accounts can connect to the members in the domain.

The solution must minimize administrative effort.

Which GPOs should you apply to the Domain Controllers OU and the Domain Servers OU? To answer, select the appropriate options in the answer area.

NOTE: Each correct selection is worth one point.

Hot Area:

## Answer Area

Domain Controllers:

▼

GPO1

GPO2

GPO3

GPO4

Domain Servers:

▼

GPO1

GPO2

GPO3

GPO4

- A. Mastered
- B. Not Mastered

**Answer:** A

**Explanation:**

Reference: <https://docs.microsoft.com/en-us/windows/security/threat-protection/windows-firewall/configure-authenticationmethods>

### NEW QUESTION 10

You have an on-premises Active Directory Domain Services (AD DS) domain that syncs with an Azure Active Directory (Azure AD) tenant by using password hash synchronization.

You have a Microsoft 365 subscription.

All devices are hybrid Azure AD-joined.

Users report that they must enter their password manually when accessing Microsoft 365 applications.

You need to reduce the number of times the users are prompted for their password when they access Microsoft 365 and Azure services.

What should you do?

- A. In Azure AD, configure a Conditional Access policy for the Microsoft Office 365 applications.
- B. In the DNS zone of the AD DS domain, create an autodiscover record.
- C. From Azure AD Connect, enable single sign-on (SSO).
- D. From Azure AD Connect, configure pass-through authentication.

**Answer:** C

**Explanation:**

Reference:

<https://docs.microsoft.com/en-us/azure/active-directory/hybrid/how-to-connect-sso-quick-start>

### NEW QUESTION 12

HOTSPOT

Your network contains an Active Directory Domain Services (AD DS) forest. The forest contains the domains shown in the following table.



Name	Domain controller	Configuration
fabrikam.com	DC1	PDC emulator
	DC2	Infrastructure master
	DC3	Read-only domain controller (RODC)
eu.fabrikam.com	DC4	PDC emulator
	DC5	Infrastructure master
	DC6	Read-only domain controller (RODC)

You are implementing Microsoft Defender for Identity sensors.

You need to install the sensors on the minimum number of domain controllers. The solution must ensure that Defender for Identity will detect all the security risks in both the domains.

What should you identify? To answer, select the appropriate options in the answer area.

NOTE: Each correct selection is worth one point.

Hot Area:

Answer Area

Domain controllers that require the sensors:

- DC1 and DC4 only
- DC2 and DC5 only
- DC1, DC2, DC4, and DC5 only
- All the domain controllers in the forest

Authentication information that must be provided during the sensor installation:

- An AD DS group managed service account (gMSA)
- A cloud-only user from Azure Active Directory (Azure AD)
- The access key generated by the Microsoft Defender for Identity portal

- A. Mastered
- B. Not Mastered

Answer: A

Explanation:

Reference:

<https://docs.microsoft.com/en-us/defender-for-identity/technical-faq#deployment> <https://docs.microsoft.com/en-us/defenderforidentity/install-step4>

#### NEW QUESTION 15

You have 10 servers that run Windows Server in a workgroup.

You need to configure the servers to encrypt all the network traffic between the servers. The solution must be as secure as possible.

Which authentication method should you configure in a connection security rule?

- A. NTLMv2
- B. pre-shared key
- C. Kerberos V5
- D. computer certificate

Answer: D

Explanation:

Reference: <https://docs.microsoft.com/en-us/windows/security/threat-protection/windows-firewall/create-an-authenticationrequest-rule>

#### NEW QUESTION 18

You have a server that runs Windows Server. The server is configured to encrypt all incoming traffic by using a connection security rule.

You need to ensure that Server1 can respond to the unencrypted tracert commands initiated from computers on the same network.

What should you do from Windows Defender Firewall with Advanced Security?

- A. From the IPsec Settings, configure IPsec defaults.
- B. Create a new custom outbound rule that allows ICMPv4 protocol connections for all profiles.
- C. Change the Firewall state of the Private profile to Off.
- D. From the IPsec Settings, configure IPsec exemptions.

Answer: D

#### NEW QUESTION 21

You are planning the migration of Archive1 to support the on-premises migration plan.

What is the minimum number of IP addresses required for the node and cluster roles on Cluster3?

- A. 2
- B. 3
- C. 4
- D. 5



Answer: B

**Explanation:**

One IP for each of the two nodes in the cluster and one IP for the cluster virtual IP (VIP).

**NEW QUESTION 24**

Note: This question is part of a series of questions that present the same scenario. Each question in the series contains a unique solution that might meet the stated goals. Some question sets might have more than one correct solution, while others might not have a correct solution.

After you answer a question in this section, you will NOT be able to return to it. As a result, these questions will not appear in the review screen.

You have a failover cluster named Cluster1 that hosts an application named App1.

The General tab in App1 Properties is shown in the General exhibit. (Click the General tab.)

App1 Properties

General Failover

App1

Name:  
App1

Preferred Owners  
 Select the preferred owners for this clustered role. Use the buttons to list them in order from most preferred at the top to least preferred at the bottom.

Server1  
 Server2

Priority: Medium

Status: Running

Node: Server2

OK Cancel Apply

The Failover tab in App1 Properties is shown in the Failover exhibit. (Click the Failover tab.)

App1 Properties

General Failover

Failover  
 Specify the number of times the Cluster service will attempt to restart or fail over the clustered role in the specified period.  
 If the clustered role fails more than the maximum in the specified period, it will be left in the failed state.

Maximum failures in the specified period: 3

Period (hours): 6

Failback  
 Specify whether the clustered role will automatically fail back to the most preferred owner (which is set on the General tab).

Prevent failback  
 Allow failback

Immediately  
 Failback between 0 and 0 hours

OK Cancel Apply

Server1 shuts down unexpectedly.

You need to ensure that when you start Server1, App1 continues to run on Server2.

Solution: From the General settings, you move Server2 up.

Does this meet the goal?

- A. Yes
- B. No

**Answer:** B

**Explanation:**

Server1 and Server2 are both unticked so the order they are listed in has no effect on whether the cluster will fail back.

**NEW QUESTION 27**

You have a failover cluster named Cluster1 that has the following configurations:

Number of nodes: 6

Quorum: Dynamic quorum

Witness: File share, Dynamic witness

What is the maximum number of nodes that can fail simultaneously while maintaining quorum?

- A. 1
- B. 2
- C. 3
- D. 4
- E. 5

**Answer:** C

**Explanation:**

Note this question is asking about nodes failing ‘simultaneously’, not nodes failing one after the other.

With six nodes and one witness, there are seven votes. To maintain quorum there needs to be four votes available (four votes is the majority of seven). This means that a minimum of three nodes plus the witness need to remain online for the cluster to function. Therefore, the maximum number of simultaneous failures is three.

Reference: <https://docs.microsoft.com/en-us/windows-server/storage/storage-spaces/understand-quorum>

**NEW QUESTION 30**

Your company uses Storage Spaces Direct.

You need to view the available storage in a Storage Space Direct storage pool.

What should you use?

- A. System Configuration
- B. File Server Resource Manager (FSRM)
- C. the Get-StorageFileServer cmdlet
- D. Failover Cluster Manager

**Answer:** D

**Explanation:**

If Failover Cluster Manager, select the Storage Space Direct storage pool. The information displayed in the main window includes the free space and used space.

**NEW QUESTION 35**

You have a Storage Spaces Direct configuration that has persistent memory and contains the data volumes shown in the following table.

Name	File system
Volume1	NTFS
Volume2	ReFS

You plan to add data volumes to Storage Spaces Direct as shown in the following table.

Name	File system
Volume3	NTFS
Volume4	ReFS

On which volumes can you use direct access (DAX)?

- A. Volume3 only
- B. Volume4 only
- C. Volume1 and Volume3 only
- D. Volume2 and Volume4 only
- E. Volume3 and Volume4 only

**Answer:** A

**Explanation:**

DAX can only be used on one volume and the volume has to be NTFS. You could configure DAX on Volume1 (although that would require reformatting the volume) or Volume3. However, ‘Volume1 only’ isn’t an answer option so Volume3 is the correct answer.

‘Volume1 and Volume3’ is incorrect because of the single volume limitation.

Reference: <https://docs.microsoft.com/en-us/windows-server/storage/storage-spaces/persistent-memory-direct-access>

**NEW QUESTION 39**

You have two servers named Server1 and Server2 that run Windows Server. Both servers have the Hyper-V server role installed.

Server1 hosts three virtual machines named VM1, VM2, and VM3. The virtual machines replicate to Server2.

Server1 experiences a hardware failure.

You need to bring VM1, VM2, and VM3 back online as soon as possible.  
 From the Hyper-V Manager console on Server2, what should you run for each virtual machine?

- A. Start
- B. Move
- C. Unplanned Failover
- D. Planned Failover

**Answer: C**

**Explanation:**

Reference: <https://docs.microsoft.com/en-us/windows-server/virtualization/hyper-v/manage/set-up-hyper-v-replica>

**NEW QUESTION 42**

**HOTSPOT**

You have a Hyper-V failover cluster named Cluster1 that uses a cloud witness. Cluster1 hosts a virtual machine named VM1 that runs Windows Server. You need to fail over VM1 automatically to a different node when a service named Service1 on VM1 fails. What should you do on Cluster1 and VM1? To answer, select the appropriate options in the answer area.

NOTE: Each correct selection is worth one point.

Hot Area:

**Answer Area**

Cluster1:

- Modify the settings of the VM1 cluster role.
- Configure monitoring of the VM1 cluster role.
- Change the startup priority of the VM1 cluster role.

VM1:

- Configure the Startup Type of Service1.
- Configure the Recovery settings of Service1.
- Configure the Startup and Recovery settings.
- Install and configure the Azure Monitor agent.

- A. Mastered
- B. Not Mastered

**Answer: A**

**Explanation:**

**Answer Area**

Cluster1:

- Modify the settings of the VM1 cluster role.
- Configure monitoring of the VM1 cluster role.
- Change the startup priority of the VM1 cluster role.

VM1:

- Configure the Startup Type of Service1.
- Configure the Recovery settings of Service1.
- Configure the Startup and Recovery settings.
- Install and configure the Azure Monitor agent.

**NEW QUESTION 43**

**DRAG DROP**

You have two physical servers named AppSrv1 and AppSrv2 and an unconfigured server named Server1. All the servers run Windows Server. Only Server1 can access the internet.

You plan to use Azure Site Recovery to replicate AppSrv1 and AppSrv2 to Azure.

You need to deploy the required components to AppSrv1, AppSrv2, and Server1.

Which components should you deploy? To answer, drag the appropriate components to the correct servers. Each component may be used once, more than once, or not at all. You may need to drag the split bar between panes or scroll to view content.

NOTE: Each correct selection is worth one point.

Select and Place:

Components	Answer Area
The Azure Connected Machine agent	
An Azure Site Recovery configuration server	To AppSrv1 and AppSrv2: <input type="text"/>
The Azure Site Recovery Mobility Service	To Server1: <input type="text"/>
The Microsoft Azure Recovery Services (MARS) agent	

- A. Mastered  
 B. Not Mastered

**Answer:** A

**Explanation:**

Reference: <https://docs.microsoft.com/en-us/azure/site-recovery/physical-azure-architecture>  
<https://docs.microsoft.com/enus/azure/siterecovery/ physical-azure-set-up-source>

**NEW QUESTION 46**

**HOTSPOT**

You have three servers named Host1, Host2, and VM1 that run Windows Server. Host1 and Host2 have the Hyper-V server role installed. VM1 is a virtual machine hosted on Host1.

You configure VM1 to replicate to Host2 by using Hyper-V Replica.

Which types of failovers can you perform on VM1 on each host? To answer, select the appropriate options in the answer area.

NOTE: Each correct selection is worth one point.

Hot Area:

**Answer Area**

VM1 on Host1:	<input type="text"/> Failover only Test Failover only Planned Failover only Failover and Planned Failover only Test Failover and Failover only
VM1 on Host2:	<input type="text"/> Failover only Test Failover only Planned Failover only Failover and Planned Failover only Test Failover and Failover only

- A. Mastered  
 B. Not Mastered

**Answer:** A

**Explanation:**

**Answer Area**

VM1 on Host1:	<input type="text"/> Failover only Test Failover only <b>Planned Failover only</b> Failover and Planned Failover only Test Failover and Failover only
VM1 on Host2:	<input type="text"/> Failover only Test Failover only Planned Failover only Failover and Planned Failover only <b>Test Failover and Failover only</b>



#### NEW QUESTION 47

You have three Azure virtual machines named VM1, VM2, and VM3 that host a multitier application.  
You plan to implement Azure Site Recovery.  
You need to ensure that VM1, VM2, and VM3 fail over as a group.  
What should you configure?

- A. an availability zone
- B. a recovery plan
- C. an availability set

**Answer:** B

#### Explanation:

Reference: <https://docs.microsoft.com/en-us/azure/site-recovery/site-recovery-overview>

#### NEW QUESTION 52

DRAG DROP

You have an Azure subscription that contains an Azure Recovery Services vault.  
You have an on-premises physical server that runs Windows Server.  
You need to back up the server daily to Azure.

Which three actions should you perform in sequence? To answer, move the appropriate actions from the list of actions to the answer area and arrange them in the correct order.

Select and Place:

Actions	Answer Area
On Server1, install and register the Azure Connected Machine agent.	
Schedule a backup.	
On Server1, install and register the Azure Site Recovery Mobility service agent.	
Download the Vault Credentials file.	
Install and register the Microsoft Azure Recovery Services (MARS) agent.	
Create a recovery plan.	

- A. Mastered
- B. Not Mastered

**Answer:** A

#### Explanation:

Reference: <https://docs.microsoft.com/en-us/azure/backup/tutorial-backup-windows-server-to-azure>

#### NEW QUESTION 57

You have 200 Azure virtual machines.  
You create a recovery plan in Azure Site Recovery to fail over all the virtual machines to an Azure region. The plan has three manual actions.  
You need to replace one of the manual actions with an automated process.  
What should you use?

- A. an Azure Desired State Configuration (DSC) virtual machine extension
- B. an Azure Automation runbook
- C. an Azure PowerShell function
- D. a Custom Script Extension on the virtual machines

**Answer:** B

#### Explanation:

Reference:  
<https://docs.microsoft.com/en-us/azure/site-recovery/recovery-plan-overview>

#### NEW QUESTION 60

You need to meet technical requirements for Share1.  
What should you use?

- A. Storage Migration Service
- B. File Server Resource Manager (FSRM)
- C. Server Manager
- D. Storage Replica

**Answer:** A

#### Explanation:

Reference: <https://docs.microsoft.com/en-us/windows-server/storage/storage-migration-service/overview>

### NEW QUESTION 62

#### DRAG DROP

You manage 200 physical servers that run Windows Server.

You plan to migrate the servers to Azure.

You need to prepare for discovery of the servers by using Azure Migrate.

Which three actions should you perform in sequence on a physical server? To answer, move the appropriate actions from the list of actions to the answer area and arrange them in the correct order.

Select and Place:

Actions	Answer Area
Download and extract the Azure Migrate installer script ZIP file.	
Download and extract the Azure Migrate Appliance VHD file.	
Run AzureMigrateInstaller.ps1.	
Import a virtual machine.	
Configure the appliance and register the appliance with Azure Migrate.	

A. Mastered

B. Not Mastered

**Answer:** A

#### Explanation:

Reference: <https://docs.microsoft.com/en-us/azure/migrate/tutorial-discover-physical>

### NEW QUESTION 67

#### DRAG DROP

Your network contains an Active Directory Domain Services (AD DS) domain named contoso.com. The functional level of the forest and the domain is Windows Server 2012 R2. The domain contains the domain controllers shown in the following table.

Name	Operating system	FSMO role
DC1	Windows Server 2012 R2	All
DC2	Windows Server 2022	None
DC3	Windows Server 2019	None

You need to raise the forest functional level to Windows Server 2016. The solution must meet the following requirements:

Ensure that there are three domain controllers after you raises the level. Minimize how long the FSMO roles are unavailable.

Which three actions should you perform in sequence? To answer, move the appropriate actions from the list of actions to the answer area and arrange them in the correct order.

Select and Place:

Actions	Answer Area
Install the Active Directory Migration Tool (ADMT).	
Deploy an additional domain controller.	
Raise the domain and forest functional level.	
Upgrade DC3.	
Migrate computer accounts by using the Active Directory Migration Tool (ADMT).	
Upgrade DC1.	
Create a custom AD DS partition.	
Move the FSMO roles to DC2.	

A. Mastered

B. Not Mastered

**Answer:** A

#### Explanation:

Actions	Answer Area
Install the Active Directory Migration Tool (ADMT).	Move the FSMO roles to DC2.
Deploy an additional domain controller.	Upgrade DC1.
	Raise the domain and forest functional level.
Upgrade DC3.	
Migrate computer accounts by using the Active Directory Migration Tool (ADMT).	
Create a custom AD DS partition.	

NEW QUESTION 72

You have two file servers named Server1 and Server2 that run Windows Server. Server1 contains a shared folder named Data. Data contains 10TB of data. You plan to decommission Server1.

You need to migrate the files from Data to a new shared folder on Server2. The solution must meet the following requirements:

Ensure that share, file, and folder permissions are copied.

After the initial copy occurs, ensure that changes in \\Server1\Data can be synced to the destination without initiating a full copy. Minimize administrative effort.

What should you use?

- A. xcopy
- B. Storage Replica
- C. Storage Migration Service
- D. azcopy

Answer: C

Explanation:

Reference: <https://docs.microsoft.com/en-us/windows-server/storage/storage-migration-service/overview#why-use-storagemigration-service>

NEW QUESTION 77

DRAG DROP

You have a server named Server1 that runs Windows Server and has the Web Server (IIS) server role installed. Server1 hosts an ASP.NET Core web app named WebApp1 and the app's source files.

You install Docker on Server1.

You need to ensure that you can deploy WebApp1 to an Azure App Service web app from the Azure Container Registry.

Which three actions should you perform in sequence? To answer, move the appropriate actions from the list of actions to the answer area and arrange them in the correct order.

Select and Place:

Actions	Answer Area
Run the docker push command.	
Run the docker run command.	
Run the docker build command.	
Create a Dockerfile.	
Create an Azure Resource Manager (ARM) template.	
Run the docker pull command.	

- A. Mastered
- B. Not Mastered

Answer: A

Explanation:

Step 1: Create a Dockerfile. This file contains instructions for the build process.

Step 2: Run the docker build command to create a container image.

Step 3: Run the docker push command to upload the image to Azure Container Registry.

NEW QUESTION 78

HOTSPOT

You have a server that runs Windows Server and has the Web Server (IIS) server role installed. Server1 hosts a single website that has the following configurations:

Is accessible by using a URL of <https://www.contoso.com:8443> and has an SSL certificate that was issued by a third-partycertification authority (CA) in the Microsoft Trusted Root Program Uses anonymous authentication Was developed byusing PHPYou plan to use APP Service Migration Assistant to migrate the

website to Azure App Service.  
 You need to migrate the website. The solution must minimize the number of changes made to the existing website.  
 What should you do manually to ensure that the website migration is successful? To answer, select the appropriate options in the answer area.  
 NOTE: Each correct selection is worth one point.  
 Hot Area:

Answer Area

On Server1:

Change the authentication method.

Change the listening port of the website.

Redevelop the website code by using ASP.NET.

In Azure:

Create an App Service plan.

Copy the source files of the website.

Configure a certificate and a custom domain name.

- A. Mastered
- B. Not Mastered

Answer: A

Explanation:

Reference:  
<https://docs.microsoft.com/en-us/learn/modules/migrate-app-service-migration-assistant/3-understand-assessment>  
<https://docs.microsoft.com/en-us/learn/modules/migrate-app-service-migration-assistant/5-understand-migration>

NEW QUESTION 81

DRAG DROP

Your network contains an Active Directory Domain Services (AD DS) domain. The domain contains a print server named Server1. All printers are deployed to users by using a Group Policy Object (GPO) named GPO1.  
 You deploy a new server named Server2.

You need to decommission Server1. The solution must meet the following requirements:

- Migrate the shared printers to Server2 by using the Printer Migration Wizard.
- Ensure that the users use the printers on Server2. Minimize downtime for the users.

Which four actions should you perform in sequence? To answer, move the appropriate actions from the list of actions to the answer area and arrange them in the correct order.

Select and Place:

**Actions**

Decommission Server1.

Import the printers on Server2.

Deploy Windows Server Hybrid Cloud Print.

Export the printers on Server1.

Update the service principal name (SPN) of each printer.

Modify GPO1.

**Answer Area**

- A. Mastered
- B. Not Mastered

Answer: A

Explanation:

Reference: <https://docs.microsoft.com/en-us/archive/blogs/canitpro/step-by-step-migrating-print-servers-from-windowsserver-2008-towindowsserver-2012>

NEW QUESTION 83

You have two servers that run Windows Server as shown in the following table.

Name	Location	Domain/workgroup
Server1	On-premises	Domain
Server2	Azure virtual machine	Workgroup

You need to copy the contents of volume E from Server1 to Server2. The solution must meet the following requirements:  
 Ensure that files in-use are copied. Minimize administrative effort.  
 What should you use?

- A. Storage Migration Service
- B. Azure File Sync
- C. Azure Backup
- D. Storage Replica



**Answer:** A

#### NEW QUESTION 88

Note: This question is part of a series of questions that present the same scenario. Each question in the series contains a unique solution that might meet the stated goals. Some question sets might have more than one correct solution, while others might not have a correct solution.  
 After you answer a question in this section, you will NOT be able to return to it. As a result, these questions will not appear in the review screen.  
 Your network contains a single-domain Active Directory Domain Services (AD DS) forest named contoso.com. The functional level of the forest is Windows Server 2012 R2. All domain controllers run Windows Server 2012 R2.  
 Sysvol replicates by using the File Replication Service (FRS).  
 You plan to replace the existing domain controllers with new domain controllers that will run Windows Server 2022.  
 You need to ensure that you can add the first domain controller that runs Windows Server 2022.  
 Solution: You migrate sysvol from FRS to Distributed File System (DFS) Replication.  
 Does this meet the goal?

- A. Yes
- B. No

**Answer:** A

#### Explanation:

Reference:  
<https://www.rebeladmin.com/2021/09/step-by-step-guide-active-directory-migration-from-windows-server-2008-r2-to-windows-server-2022/>

#### NEW QUESTION 92

You have an Azure virtual machine named VM1. Crash dumps for a process named Process1 are enabled for VM1.  
 When process1.exe on VM1 crashes, a technician must access the memory dump files on the virtual machine. The technician must be prevented from accessing the virtual machine.  
 To what should you provide the technician access?

- A. an Azure file share
- B. an Azure Log Analytics workspace
- C. an Azure Blob Storage container
- D. a managed disk

**Answer:** C

#### Explanation:

Reference: <https://docs.microsoft.com/en-us/azure/azure-monitor/agents/diagnostics-extension-overview>

#### NEW QUESTION 97

You plan to deploy the Azure Monitor agent to 100 on-premises servers that run Windows Server.  
 Which parameters should you provide when you install the agent?

- A. the client ID and the secret of an Azure service principal
- B. the name and the access key of an Azure Storage account
- C. a connection string for an Azure SQL database
- D. the ID and the key of an Azure Log Analytics workspace

**Answer:** D

#### Explanation:

Reference: <https://docs.microsoft.com/en-us/windows-server/storage/storage-spaces/configure-azure-monitor>

#### NEW QUESTION 101

Your on-premises network contains two subnets. The subnets contain servers that run Windows Server as shown in the following table.

Name	IP address
Server1	192.168.1.10
Server2	192.168.0.250
Server3	192.168.0.240
Server4	192.168.0.10

Server4 has the following IP configurations:  
 Ethernet adapter Ethernet:  
 Connection-specific DNS Suffix . . . :  
 IPv4 Address . . . . . : 192.168.0.10  
 Subnet Mask . . . . . : 255.255.255.0  
 Default Gateway . . . . . : 192.168.0.1  
 From Server4, you can ping Server1 and Server2 successfully. When you ping Server3, you get a Request timed out response.  
 From Server2, you can ping Server1 and Server3 successfully.  
 The misconfiguration of which component on Server3 can cause the Request timed out response?

- A. default gateway
- B. IP address
- C. subnet mask

D. DNS server

**Answer:** C

### NEW QUESTION 103

HOTSPOT

You have a server named Server1 that runs Windows Server.

On Server1, you create a Data Collector Set named CollectorSet1 based on the Basic template.

You need to configure CollectorSet1 to meet the following requirements:

Older performance counter logs must be overwritten by new ones.

Performance counter logging must stop if there is less than 500 MB of free disk space.

What should you configure for each requirement? To answer, select the appropriate options in the answer area.

NOTE: Each correct selection is worth one point.

Hot Area:

**Answer Area**

Older performance counter logs must be overwritten by new ones:	<input type="checkbox"/> The Configuration properties <input type="checkbox"/> The Data Manager properties <input type="checkbox"/> The Performance Counter properties
Performance counter logging must stop if there is less than 500 MB of free disk space:	<input type="checkbox"/> The Configuration properties <input type="checkbox"/> The Data Manager properties <input type="checkbox"/> The Performance Counter properties

A. Mastered

B. Not Mastered

**Answer:** A

**Explanation:**

**Answer Area**

Older performance counter logs must be overwritten by new ones:	<input type="checkbox"/> The Configuration properties <input type="checkbox"/> The Data Manager properties <input checked="" type="checkbox"/> The Performance Counter properties
Performance counter logging must stop if there is less than 500 MB of free disk space:	<input type="checkbox"/> The Configuration properties <input checked="" type="checkbox"/> The Data Manager properties <input type="checkbox"/> The Performance Counter properties

### NEW QUESTION 105

You have a Site-to-Site VPN between an on-premises network and an Azure VPN gateway. BGP is disabled for the Site-to-Site VPN.

You have an Azure virtual network named Vnet1 that contains a subnet named Subnet1. Subnet1 contains a virtual machine named Server1.

You can connect to Server1 from the on-premises network.

You extend the address space of Vnet1. You add a subnet named Subnet2 to Vnet1. Subnet2 uses the extended address space. You deploy an Azure virtual machine named Server2 to Subnet2.

You cannot connect to Server2 from the on-premises network. Server1 can connect to Server2.

You need to ensure that you can connect to Subnet2 from the on-premises network.

What should you do?

A. Add an additional Site-to-Site VPN between the on-premises network and Vnet1.

B. Add a private endpoint to Subnet2.

C. To Subnet2, add a route table that contains a user-defined route.

D. Update the routing information on the on-premises routers.

**Answer:** D

### NEW QUESTION 110

DRAG DROP

You have an Azure virtual machine named VM1 that runs Windows Server. VM1 has boot diagnostics configured to use a managed storage account.

You are troubleshooting connectivity issue on VM1.

You need to run a PowerShell cmdlet on VM1 by using the Azure Serial Console.

Which four actions should you perform in sequence? To answer, move the appropriate actions from the list of actions to the answer area and arrange them in the correct order.

Select and Place:

Actions	Answer Area
From the Azure portal, configure the Boot diagnostics settings for VM1 to use a custom storage account.	
From the Azure portal, open the Run command blade.	
From the Azure portal, open the Serial console blade of VM1.	
From the Azure portal, enable just in time (JIT) VM access to VM1.	
From the Serial console, run <code>ch -s 1</code> and sign in by using a local account.	
From the Serial console, run <code>cmd</code> .	

- A. Mastered
- B. Not Mastered

Answer: A

Explanation:

Reference:  
<https://docs.microsoft.com/en-us/troubleshoot/azure/virtual-machines/serial-console-overview> <https://docs.microsoft.com/enus/troubleshoot/azure/virtual-machines/serial-console-windows>

NEW QUESTION 114

.....

## THANKS FOR TRYING THE DEMO OF OUR PRODUCT

Visit Our Site to Purchase the Full Set of Actual AZ-801 Exam Questions With Answers.

We Also Provide Practice Exam Software That Simulates Real Exam Environment And Has Many Self-Assessment Features. Order the AZ-801 Product From:

<https://www.2passeasy.com/dumps/AZ-801/>

## Money Back Guarantee

### **AZ-801 Practice Exam Features:**

- \* AZ-801 Questions and Answers Updated Frequently
- \* AZ-801 Practice Questions Verified by Expert Senior Certified Staff
- \* AZ-801 Most Realistic Questions that Guarantee you a Pass on Your FirstTry
- \* AZ-801 Practice Test Questions in Multiple Choice Formats and Updatesfor 1 Year