



**Microsoft**

**Exam Questions PL-900**

Microsoft Power Platform Fundamentals

### NEW QUESTION 1

- (Exam Topic 1)

A company plans to use Power Platform to build apps which address specific business challenges. You need to recommend the appropriate types of Power Apps to use.

What should you recommend? To answer, select the appropriate option in the answer area. NOTE: Each correct selection is worth one point.

Scenario	Tool
Field technicians need a mobile app to capture the location and the image of defective products.	<div> <div></div> <div> Canvas app Power Apps portal Common Data Service </div> </div>
Sales representatives need to see different views and dashboards in the sales app.	<div> <div></div> <div> Canvas app Model-driven app Power Apps portal </div> </div>
External customers need to view the progress of their service cases.	<div> <div></div> <div> Model-driven app Power Apps portal Common Data Service </div> </div>

- A. Mastered
- B. Not Mastered

**Answer:** A

#### Explanation:

Reference:

<https://docs.microsoft.com/en-us/powerapps/maker/canvas-apps/getting-started> <https://docs.microsoft.com/en-us/powerapps/maker/model-driven-apps/model-driven-app-overview> <https://docs.microsoft.com/en-us/powerapps/maker/portals/overview>

### NEW QUESTION 2

- (Exam Topic 1)

A rapidly growing company wants to empower users to build apps, automate business processes, and analyze data without requiring I expertise or development skills and without increasing IT expenses and dependencies.

You need to recommend tools so that users can accomplish specific tasks.

Which tools should you recommend? To answer, select the appropriate options in the answer area. NOTE: Each correct selection is worth one point.

Scenario	Application
Build automatic workflows that access multiple data sources.	<div> <div></div> <div> AI Builder Power Apps Microsoft Flow Azure Functions Power BI </div> </div>
Create custom apps that address specific business needs.	<div> <div></div> <div> AI Builder Power Apps Microsoft Flow Azure Functions Power BI </div> </div>
Design insightful data visualizations.	<div> <div></div> <div> AI Builder Power Apps Microsoft Flow Azure Functions Power BI </div> </div>

- A. Mastered
- B. Not Mastered

**Answer:** A

#### Explanation:

Box 1: Microsoft Flow

Microsoft Flow, now called Power Automate, is cloud-based software that allows employees to create and automate workflows and tasks across multiple applications and services without help from developers.

Box 2: Power Apps

PowerApps is a suite of apps, services, connectors and data platform that provides a rapid application development environment to build custom apps for your business needs.

Box 3: Power BI  
Power BI is a business analytics solution that lets you visualize your data and share insights across your organization, or embed them in your app or website. Connect to hundreds of data sources and bring your data to life with live dashboards and reports.  
Reference:  
<https://docs.microsoft.com/en-us/powerapps/powerapps-overview>

NEW QUESTION 3

- (Exam Topic 1)  
A travel company plans to use the Power Platform to create tools that help travel agents book customer travel. You need to recommend solutions for the company. What should you recommend? To answer, drag the appropriate tools to the correct requirements. Each tool may be used once, more than once, or not at all. You may need to drag the split bar between panes or scroll to view content.  
NOTE: Each correct selection is worth one point.

Tools

Business rule

Business process flow

Power Automate

Power BI

Answer Area

Requirement

If a customer is travelling with a person under the age of 18, a field must display to collect date of birth for the under 18 traveler only.

Ensure that all travel agents use the same process with all customers.

Send a confirmation email to customers after reservations are complete.

Tool

Tool

Tool

Tool

- A. Mastered
- B. Not Mastered

Answer: A

Explanation:

Reference:  
<https://docs.microsoft.com/en-us/power-automate/getting-started>  
<https://docs.microsoft.com/en-us/powerapps/maker/common-data-service/data-platform-create-business-rule#:~:>

NEW QUESTION 4

- (Exam Topic 1)  
You have version 1.0.0.0 of a published Power Apps app. You create and publish version 2.0.0.0 of the app. A customer goes through the process of restoring the previous version of the app.  
How many versions of the app are displayed in the Version tab for the app? To answer, select the appropriate option in the answer area.

You will see 

▼

0

1

2

 versions of the app.

- A. Mastered
- B. Not Mastered

Answer: A

Explanation:

Reference:  
<https://docs.microsoft.com/en-us/powerapps/maker/canvas-apps/restore-an-app>

NEW QUESTION 5

- (Exam Topic 1)  
You are a customer service manager.  
You need to implement a Power Apps portal that allows customers to submit cases. Which type of data source is used?

- A. Dynamics 365 Connector
- B. Microsoft SharePoint
- C. Microsoft Azure Storage
- D. Common Data Service

Answer: B

Explanation:

SharePoint can be set up to setup customer feedback.  
Note: The PowerApp uses Finance and Operations connector to grab sales order information and SharePoint connector to connect and write the data to SharePoint list.  
Reference:  
<https://powerapps.microsoft.com/en-us/blog/scenario-2-collect-customer-feedback-in-sharepoint-after-order-delivery/>

NEW QUESTION 6

- (Exam Topic 2)  
A manufacturing company is evaluating AI Builder.

You need to select AI Builder models to address specified requirements.  
Which model types should you use? To answer, drag the appropriate model types to the correct requirements. Each model type may be used once, more than once, or not at all. You may need to drag the split bar between panes or scroll to view content.  
NOTE: Each correct selection is worth one point.

Model types

prediction

form processing

object detection

Answer Area

Requirement

Identify products without labels or serial numbers.

Identify customers who might not pay their invoices on time.

Model type

model type

model type

- A. Mastered
- B. Not Mastered

Answer: A

Explanation:

Reference:  
<https://docs.microsoft.com/en-us/ai-builder/object-detection-model-in-flow> <https://docs.microsoft.com/en-us/ai-builder/prediction-overview>

NEW QUESTION 7

- (Exam Topic 2)  
A company plans to create Power Platform apps that consume industry-standard and proprietary data sources. For each of the following statements, select Yes if the statement is true. Otherwise, select No.  
NOTE: Each correct selection is worth one point.

Statement	Yes	No
Custom connector cannot be used if a standard connector for the service is available.	<input type="radio"/>	<input type="radio"/>
Custom connectors are supported in instant flows only.	<input type="radio"/>	<input type="radio"/>
Standard and custom connectors cannot be mixed within the same flow or app.	<input type="radio"/>	<input type="radio"/>

- A. Mastered
- B. Not Mastered

Answer: A

Explanation:

Reference:  
<https://docs.microsoft.com/en-us/powerapps/maker/canvas-apps/connections-list>

NEW QUESTION 8

- (Exam Topic 2)  
A company uses Microsoft 365 and Dynamics 365 Sales. The company does not have any developers on its staff.  
You need to explain to the executives the benefits of using Power Platform apps. What are two benefits? Each correct answer presents a complete solution.  
NOTE: Each correct selection is worth one point.

- A. Users can send emails from Dynamics 365 Sales to their personal email addresses.
- B. Users can create Power Apps to create apps for different departments.
- C. Users can use Power Automate to share information between Microsoft 365 and Dynamics 365 Sales.
- D. The company must unify all the mobile devices to one vendor.

Answer: BC

NEW QUESTION 9

- (Exam Topic 2)  
You are creating a model-driven Power Apps app. You want to ensure that the app can be used by individuals who have vision impairments.  
For each of the following statements, select Yes if the statement is true. Otherwise, select No. NOTE: Each correct selection is worth one point.

Statement	Yes	No
Power Apps apps can be built with hot key support and designed so they do not require a touch screen or mouse.	<input type="radio"/>	<input type="radio"/>
Only model-driven Power Apps have support for using a screen reader without the need for a connector.	<input type="radio"/>	<input type="radio"/>
The accessibility checker can be run for your Power Apps app to provide notifications of accessibility violations as well as tips for making it even more user friendly.	<input type="radio"/>	<input type="radio"/>

- A. Mastered  
B. Not Mastered

Answer: A

Explanation:

Box 1: Yes

You can use keyboard shortcuts in PowerApps. Keyboard shortcuts give you an alternate way to do common tasks instead of using your mouse or tapping with your finger. They help in seamless navigation of the interface.

Box 2: No

The following software combinations are the supported recommendations for consuming PowerApps with a screen reader:

Windows: Microsoft Edge / Narrator macOS: Safari / VoiceOver Android: PowerApps app / Talkback iOS: PowerApps app / VoiceOver

Box 3: Yes  
Users who have vision, hearing, or other impairments can use your canvas app more easily and successfully if you consider accessibility as you design how the app looks and behaves. If you're not sure how to make your app more accessible, you can run the Accessibility checker in PowerApps Studio. This tool not only finds potential accessibility issues but also explains why each might be a potential problem for users who have a specific disability and offers suggestions on how to resolve each issue. The Accessibility checker detects screen-reader and keyboard issues for you, and you can find information about how to fix color-contrast issues by using accessible colors.

Reference:

<https://docs.microsoft.com/en-us/powerapps/user/keyboard-shortcuts> <https://docs.microsoft.com/en-us/powerapps/user/screen-reader>

<https://docs.microsoft.com/en-us/powerapps/maker/canvas-apps/accessibility-checker>

NEW QUESTION 10

- (Exam Topic 2)

You create a business rule on contact entity to enforce the requirement that users must enter either a telephone number, fax number, or an email when creating a new record.

The company decides to remove fax number from the condition. You need to update the business rule.

What are two ways of achieving the goal? Each correct answer presents a complete solution. NOTE: Each correct selection is worth one point.

- A. Save a copy of the rule and change the condition.  
B. Deactivate and delete the original rule.  
C. Deactivate the business rule and change the condition.  
D. Take a snapshot of the business rule and change the condition.  
E. Change the condition and activate the change.

Answer: AD

Explanation:

Reference:

<https://docs.microsoft.com/en-us/powerapps/maker/canvas-apps/working-with-rules>

NEW QUESTION 10

- (Exam Topic 2)

A business is evaluating AI Builder. Which actions can you perform?

For each of the following statements, select Yes if the statement is true. Otherwise, select No. NOTE: Each correct selection is worth one point.

Statement	Yes	No
You can use a text classification model in AI Builder to retrieve text and perform sentiment analysis for ServiceNow incidents.	<input type="radio"/>	<input type="radio"/>
You can tag Instagram posts that mention your new product.	<input type="radio"/>	<input type="radio"/>
You can send results about the number of mentions of your new product in Instagram to Power BI for inclusion on a dashboard.	<input type="radio"/>	<input type="radio"/>

- A. Mastered  
B. Not Mastered



Answer: A

Explanation:

Reference:

<https://docs.microsoft.com/en-us/ai-builder/create-text-classification-model> <https://radacad.com/object-detector-app-with-ai-builder-and-power-apps>

NEW QUESTION 15

- (Exam Topic 3)

A company plans to display support call metrics on a screen that is visible to all call center staff. You need to recommend solutions to meet the company's requirements.

What should you recommend? To answer, drag the appropriate components to the correct requirements. Each component may be used once, more than once, or not at all. You may need to drag the split bar between panes or scroll to view content.

NOTE: Each correct selection is worth one point.

Components

Tile

Theme

Template App

Alert

Treemap

DirectQuery

Page

Workspace

Answer Area

Requirement

Component

Display a chart with incoming calls versus wait time and pin the chart to a dashboard.

Component

Send a specific user a notification when the number of customer support calls waiting is over 20.

Component

Display metrics from different datasets that have related data.

Component

- A. Mastered
- B. Not Mastered

Answer: A

Explanation:

Reference:

<https://docs.microsoft.com/en-us/power-bi/create-reports/service-dashboard-tiles> <https://docs.microsoft.com/en-us/power-bi/create-reports/service-set-data-alerts>

<https://docs.microsoft.com/en-us/power-bi/visuals/power-bi-visualization-treemaps>

NEW QUESTION 17

- (Exam Topic 3)

You create a Power BI dashboard.

Match each option to its function. To answer, drag the appropriate option from the column on the left to its function on the right. Each option may be used once, more than once, or not at all.

NOTE: Each correct match is worth one point.

Products

Share

Embed

Get Data

Pin

Import

Answer Area

Requirement

Product

Ensure that coworkers can see the dashboard.

Display data from Microsoft Excel in the dashboard.

Add a report tile to the dashboard.

- A. Mastered
- B. Not Mastered

Answer: A

Explanation:

Reference:

<https://docs.microsoft.com/en-us/power-bi/service-set-data-alerts> <https://docs.microsoft.com/en-us/power-bi/service-analyze-in-excel> <https://docs.microsoft.com/en-us/power-bi/service-dashboard-pin-tile-from-report>

NEW QUESTION 20

- (Exam Topic 3)

You create a set of dashboards and reports for a project team that combines data from different sources in Power BI. Some of the data is considered sensitive.

You need to distribute the dashboards and reports securely to the team. What should you create?

- A. a custom data connector
- B. a published app
- C. a Microsoft flow
- D. a Power BI workspace

Answer: B

Explanation:

Reference:

<https://docs.microsoft.com/en-us/power-bi/service-how-to-collaborate-distribute-dashboards-reports>

NEW QUESTION 24

- (Exam Topic 3)

You are a district manager for a large retail organization. You train each store manager to use Power BI to track sales and daily sales targets.

A store manager remembers learning about the Analyze in Excel option but cannot find the option in their Power BI dashboard.

You need to help the user resolve the issue. How should you advise the user?

- A. Install the Power BI Desktop app.
- B. Navigate to the report used by the dashboard.
- C. Select the Spotlight button on the dashboard tile.
- D. Subscribe to the dashboard and follow the email link.

Answer: B

Explanation:

Reference:

<https://docs.microsoft.com/en-us/power-bi/collaborate-share/service-analyze-in-excel>

NEW QUESTION 27

- (Exam Topic 3)

A company needs to create a series of mobile applications to empower their field engineers to accomplish several tasks with varying degrees of complexity.

Match each option to its answer.

Instructions: To answer, drag the appropriate app type from the column on the left to its definition on the right. Each app type may be used once, more than once, or not at all.

NOTE: Each correct match is worth one point.

App types	Answer Area
model-driven	DefinitionApp type
dashboard	Quickly create apps for very complex business processes with very little or no code.App type
dataset	Create simple apps with a highly customizable user interface layouts.App type
canvas	

- A. Mastered
- B. Not Mastered

Answer: A

Explanation:

Box 1: canvas

Both model-driven and canvas apps allow you to easily build business apps. They both share access to the Common Data Service providing standard and custom entities. Canvas apps start with your user experience, crafting a highly tailored interface with the power of a blank canvas and connecting it to 200 data sources. Canvas apps can be built for web, mobile, and tablet applications. Model-driven apps start with your data model – building up from the shape of your core business data and processes in the Common Data Service to model forms, views, and other components. Model-driven apps automatically generate great UI that is responsive across devices.

Box 2: model-driven Reference:

<https://powerapps.microsoft.com/sv-se/blog/introducing-model-driven-apps/>

NEW QUESTION 30

- (Exam Topic 3)

You create reports within Power BI to report on the status of a project. A manager asks you to share the reports with other team members. You decide to create a published app and set permissions to allow other team members to view the reports.

For each of the following statements, select Yes if the statement is true. Otherwise, select No. NOTE: Each correct selection is worth one point.

Statement	Yes	No
The Power BI published app is stored within the Team site so that others can install it.	<input type="radio"/>	<input type="radio"/>
One of the other project managers installs and modifiers a dashboard within the Power BI published app. The changes are automatically made into the original published app.	<input type="radio"/>	<input type="radio"/>

- A. Mastered
- B. Not Mastered

Answer: A

**Explanation:**

Reference:

<https://docs.microsoft.com/en-us/power-bi/collaborate-share/service-create-distribute-apps>

**NEW QUESTION 31**

- (Exam Topic 3)

You have a Power BI report.

For each of the following statements, select Yes if the statement is true. Otherwise, select No. NOTE: Each correct selection is worth one point.

Statement	Yes	No
You can export data from a visualization in a Power BI report.	<input type="radio"/>	<input type="radio"/>
You can show the data behind a visual report on your screen without exporting the data.	<input type="radio"/>	<input type="radio"/>
You must export data to view supporting data for a KPI.	<input type="radio"/>	<input type="radio"/>

- A. Mastered  
 B. Not Mastered

**Answer: A**

**Explanation:**

Box 1: Yes

If you'd like to see the data that Power BI uses to create a visualization, you can display that data in Power BI. You can also export that data to Excel as an .xlsx or .csv file. The option to export the data requires a Pro or Premium license and edit permissions to the dataset and report.

Note: Export data from a Power BI dashboard

> Choose the Export data icon.

> Power BI exports the data to a .csv file. If you've filtered the visualization, then the app will filter the downloaded data.

> Your browser will prompt you to save the file. Once saved, open the .csv file in Excel. Box 2: No

Underlying data: Select this option if you want to see the data in the visual and additional data from the model (see chart below for details). If your visualization has an aggregate, selecting Underlying data removes the aggregate. When you select Export, Power BI exports the data to an .xlsx file and your browser prompts you to save the file. Once saved, open the file in Excel.

Box 3: Yes

A KPI dataset needs to contain goal values for a KPI. If your dataset doesn't contain goal values, you can create them by adding an Excel sheet with goals to your data model or PBIX file.

Note: A Key Performance Indicator (KPI) is a visual cue that communicates the amount of progress made toward a measurable goal.

Reference:

<https://docs.microsoft.com/en-us/power-bi/visuals/power-bi-visualization-export-data>

<https://docs.microsoft.com/en-us/power-bi/visuals/power-bi-visualization-kpi>

**NEW QUESTION 33**

- (Exam Topic 3)

A company plans to implement Power BI to analyze retail operations data. You need to recommend solutions for the company.

Which Power BI components should the company use? To answer, drag the appropriate Power BI components

to the correct requirements. Each Power BI component may be used once, more than once, or not at all. You may need to drag the split bar between panes or scroll to view content.

NOTE: Each correct selection is worth one point.

Power BI components	Answer Area	
reports	Requirement	Power BI component
workspaces	Allow users to set and receive alerts when data changes beyond specified limits.	<input type="text"/>
dashboards	View and filter data and export data to Microsoft Excel for further manipulation and analysis.	<input type="text"/>
dataset		

- A. Mastered  
 B. Not Mastered

**Answer: A**

**Explanation:**



Requirement	Power BI component
Allow users to set and receive alerts when data changes beyond specified limits.	workspaces
View and filter data and export data to Microsoft Excel for further manipulation and analysis.	dataset

### NEW QUESTION 35

- (Exam Topic 3)

What is a benefit of deploying Microsoft 365 and Dynamics 365 apps in the same tenant?

- A. You do not need to manually back up data.
- B. Both will use the same time zone.
- C. You can use Power BI to display data that comes from both environments.
- D. You can implement Single Sign-On (SSO).

**Answer: C**

#### Explanation:

Reference:

<https://docs.microsoft.com/en-us/power-platform/admin/use-power-bi>

### NEW QUESTION 38

- (Exam Topic 3)

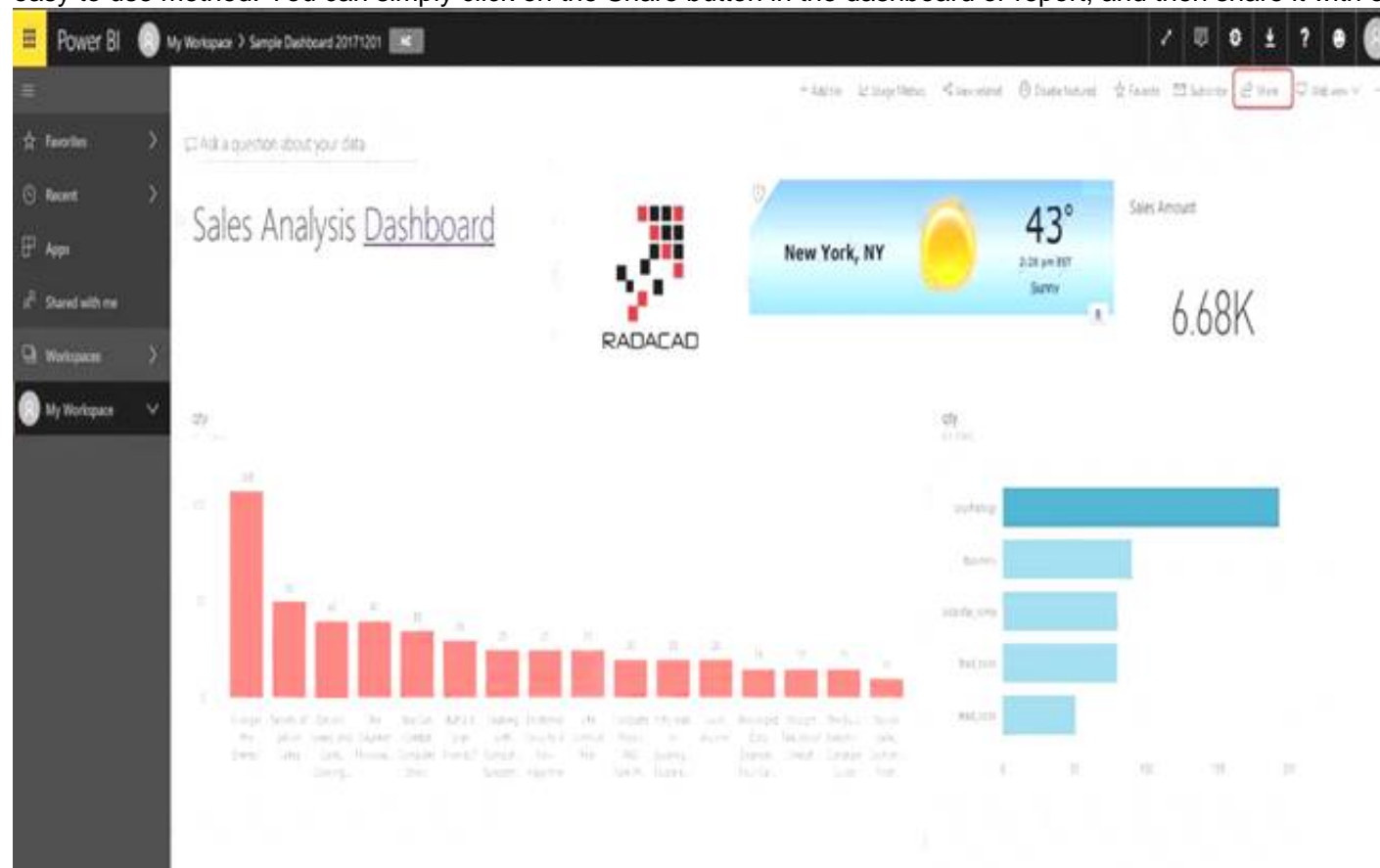
You create a Power BI dashboard that displays data from Dynamics 365 Customer Engagement. You need to share the Power BI dashboard with coworkers. What are three possible ways to achieve the goal? Each correct answer presents a complete solution. NOTE: Each correct selection is worth one point.

- A. Create a Power BI workspace and grant coworkers permissions.
- B. Publish the dashboard as an app to your coworkers.
- C. Export the data into Common Data Service for others to manipulate in Power BI.
- D. Export the data to Microsoft Excel for coworkers to import and view in Power BI.
- E. Embed reports in your company's internal web portal.

**Answer: ABE**

#### Explanation:

A: Basic Sharing for Dashboards and Reports through a workspace is the most common way of sharing the Power BI content. Basic Sharing is very simple and easy to use method. You can simply click on the Share button in the dashboard or report, and then share it with other users.



B: Apps are great sharing method for multiple environment, and best way of sharing for users in production environment.

Power BI App is the solution for multiple environment approach. With Power BI App, your development environment (workspace), and user environment (App) are isolated from each other.

Note: If you are using SharePoint online as a portal for document management and some other reasons already, then consider using Embed in SharePoint Online feature of Power BI reports. This method is secure and you can share the report only with Power BI users you want.

E: Sometimes, you don't need a secure way of sharing, you may search for an easy and free way of sharing, and your content is not confidential or sensitive.

Publish to web is your friend in such situation. This is the only free way of sharing in Power BI, but be aware that this method is not secure.

Publish to web method, gives you an embed code, which you can use in any web pages to embed the Power BI report in it

Reference:

<https://radacad.com/power-bi-sharing-methods-comparison-all-in-one-review>

#### NEW QUESTION 42

- (Exam Topic 3)

Your company has an on premises Microsoft SQL Server database that contains legacy sales data. You must display information from the database in a new Power Apps app.

You need to establish a secure connection between the database and the app. What should you use?

- A. Data source
- B. App
- C. Gateway
- D. Flow

**Answer: C**

#### Explanation:

For an on-premises database, identify a data gateway that was shared with you (or create one).

Specify Connect using on-premises data gateway, type or paste the server name, the database name, the user name, and the password for the database that you want to use, and specify the authentication type and the gateway.

Reference:

<https://docs.microsoft.com/en-us/powerapps/maker/canvas-apps/connections/connection-azure-sqldatabase>

#### NEW QUESTION 44

- (Exam Topic 4)

A company is considering implementing PowerApps to help manage business processes. Users are trying to understand the purposes and benefits of PowerApps components.

Match each benefit to its tool. To answer, drag the appropriate benefit from the column on the left to its tool on the right. Each benefit may be used once, more than once, or not at all.

NOTE: Each correct selection is worth one point.

**Answer Area**

Tools	Benefit	Tool
connectors	Easy data integration	
canvas apps	Low code / no code across applications	
AI Builder	Easy to customize front end	
Power Automate		
portals		

- A. Mastered
- B. Not Mastered

**Answer: A**

#### Explanation:

Reference:

<https://docs.microsoft.com/en-us/power-platform/admin/data-integrator> <https://powerapps.microsoft.com/en-us/blog/create-business-apps-using-powerapps-and-azure-functions/>

<https://www.forbes.com/sites/adrianbridgwater/2019/06/17/microsoft-offers-premade-no-code-artificial-intellige>

#### NEW QUESTION 48

- (Exam Topic 4)

You create a Power App portal.

When a user signs into the portal the following error displays: user not found You confirm that the user's sign in information is correct.

You need to determine the cause of the error. What should you do?

- A. Disable custom error messages.
- B. Create a custom error message.
- C. Enable diagnostic tools in Lifecycle Services.
- D. Enable Maintenance mode.

**Answer: C**

#### Explanation:

Reference:

<https://docs.microsoft.com/en-us/dynamics365/fin-ops-core/dev-itpro/lifecycle-services/monitoring-diagnostics> <https://docs.microsoft.com/en-us/dynamics365/fin-ops-core/dev-itpro/lifecycle-services/user-logins>

#### NEW QUESTION 52

- (Exam Topic 4)

You are designing a Power Apps solution that allows users to upload a status report directly to the company Microsoft SharePoint project management site from their mobile device.

For each of the following statements, select Yes if the statement is true. Otherwise, select No. NOTE: Each correct selection is worth one point.

Statement	Yes	No
You should build a model-driven app in Power Apps.	<input type="radio"/>	<input type="radio"/>
You should build a canvas app in Power Apps.	<input type="radio"/>	<input type="radio"/>
Users must download and run the Power Apps mobile application to use the solution.	<input type="radio"/>	<input type="radio"/>

- A. Mastered  
B. Not Mastered

Answer: A

Explanation:

Box 1: No

Box 2: Yes

Box 3: Yes

When you create an app, or someone shares an app with you, you can run that app on Windows, iOS, Android, or in a web browser.

References:

<https://docs.microsoft.com/en-us/powerapps/maker/canvas-apps/app-from-sharepoint> <https://docs.microsoft.com/en-us/powerapps/user/run-app-client>

NEW QUESTION 54

- (Exam Topic 4)

A company plans to implement Power Apps in a Power Platform environment. You need to implement other required components.

Match each option to its function. To answer, drag the appropriate option from the column on the left to its function on the right. Each option may be used once, more than once, or not at all.

NOTE: Each correct match is worth one point.

Products

Microsoft Azure

custom connector

Microsoft Flow

model-driven app

canvas app

Answer Area

Function	Product
Implement user authentication.	

| Send data to a Microsoft OneNote notebook in the same tenant. |  |

- A. Mastered  
B. Not Mastered

Answer: A

Explanation:

Reference:

<https://powerapps.microsoft.com/en-us/blog/implementing-role-based-permission/> <https://www.encorebusiness.com/blog/powerapps-flow-can/>

NEW QUESTION 55

- (Exam Topic 4)

A company has a Power Apps app that is used by most employees. The company is expanding to other countries/regions.

You need to recommend a solution to translate text generated within the Power Apps in near real-time.

What should you recommend?

- A. Microsoft Azure Synapse Analytics  
B. Microsoft Azure Cognitive Services  
C. Common Data Service connector  
D. Power BI

Answer: B

Explanation:

Reference:

[https://docs.microsoft.com/en-gb/azure/cognitive-services/welcome? ocid=AID2339762\\_TWITTER\\_oo\\_spl100000827964250](https://docs.microsoft.com/en-gb/azure/cognitive-services/welcome? ocid=AID2339762_TWITTER_oo_spl100000827964250)

<https://powerapps.microsoft.com/en-us/blog/cognitive-services-with-powerapps-using-custom-connectors/>

NEW QUESTION 60

- (Exam Topic 4)

A company is building a model-driven app.

You need to create and configure the objects needed for the app.

Which component categories should you use? To answer, drag the appropriate component categories to the correct objects. Each component category may be used once, more than once, or not at all. You may need to drag the split bar between panes or scroll to view content.

NOTE: Each correct selection is worth one point.

Component categories	Answer Area	
	Object	Component category
UI	Relationship	
Data	Form	
Logic	Business rule	
Visulaization	View	

- A. Mastered
- B. Not Mastered

Answer: A

Explanation:

Reference:  
<https://docs.microsoft.com/en-us/powerapps/maker/model-driven-apps/model-driven-app-components>

NEW QUESTION 63

- (Exam Topic 4)  
A company is building a Power Apps portal.  
You need to select out-of-the-box portal types to meet the company's requirements.  
Which portal types should you use? To answer, drag the appropriate portal types to the correct requirements. Each portal type may be used once, more than once, or not at all. You may need to drag the split bar between panes or scroll to view content.  
NOTE: Each correct selection is worth one point.

Portal types	Answer Area	
	Requirement	Portal type
partner portal	Collaboratively onboard new suppliers and distributors.	Portal type
community portal	Publish a blog post announcing new suppliers.	Portal type
portal from blank		
customer self-service portal		

- A. Mastered
- B. Not Mastered

Answer: A

Explanation:

Box 1: Partner portal  
A partner portal allows every organization with resellers, distributors, suppliers, or partners to have real-time access to every stage of shared activities.  
Box 2: Community portal  
A community portal leverages peer-to-peer interactions between customers and experts to organically grow the catalog of available knowledge from knowledge base articles, forums, and blogs as well as providing feedback through comments and ratings.  
Reference:  
<https://docs.microsoft.com/en-us/powerapps/maker/portals/portal-templates>

NEW QUESTION 67

- (Exam Topic 4) You are creating a canvas app. You need to configure the app.  
Which two objects are provided by the connector? Each correct answer presents a complete solution. NOTE: Each correct selection is worth one point.

- A. customizations
- B. data sources
- C. actions
- D. tables

Answer: CD

NEW QUESTION 69

- (Exam Topic 4)  
You are creating a canvas app that will be used in several countries/regions.  
For each of the following statements, select Yes if the statement is true. Otherwise, select No. NOTE: Each correct selection is worth one point.



Statement	Yes	No
Canvas app authoring environment will adapt to the language setting of the author.	<input type="radio"/>	<input type="radio"/>
When running a canvas app on a mobile device, the app adopts the app author's language.	<input type="radio"/>	<input type="radio"/>
Numbers and dates in Power Apps app automatically conform to the regional and language settings for a user's device.	<input type="radio"/>	<input type="radio"/>

- A. Mastered  
B. Not Mastered

**Answer:** A

**Explanation:**

Reference:

<https://docs.microsoft.com/en-us/powerapps/maker/canvas-apps/global-apps>

**NEW QUESTION 71**

- (Exam Topic 4)

A company plans to create a canvas app that connects to three databases with different proprietary database formats. What is the minimum number of connectors required?

- A. 1  
B. 2  
C. 3

**Answer:** B

**NEW QUESTION 73**

- (Exam Topic 4)

You create a canvas app by using the Generate from data feature. The app connects to a Microsoft SharePoint list.

For each of the following statements, select Yes if the statement is true. Otherwise, select No. NOTE: Each correct selection is worth one point.

Statement	Yes	No
A screen is generated that contains a browsable list of SharePoint list items.	<input type="radio"/>	<input type="radio"/>
A screen is generated that allows users to update SharePoint list items.	<input type="radio"/>	<input type="radio"/>

- A. Mastered  
B. Not Mastered

**Answer:** A

**Explanation:**

Reference:

<https://docs.microsoft.com/en-us/powerapps/maker/canvas-apps/app-from-sharepoint>

**NEW QUESTION 76**

- (Exam Topic 5)

You are new to working with Microsoft Flow. You create a flow that extracts birth dates for users and then sends a birthday greeting email to users on their birthday.

The flow does not properly extract birth dates. Where should you make changes?

- A. Connectors  
B. Expression  
C. Templates

**Answer:** A

**Explanation:**

Select the new Date Time connector. There you will see all of the actions, which help you to convert time zones to format them for local time in an email, add or subtract times, or just get the current time.

Reference:

<https://flow.microsoft.com/en-us/blog/nested-apply-to-each/>

NEW QUESTION 80

- (Exam Topic 5)

A business plans to including AI Builder. Which actions can you perform?

For each of the following statements, select Yes if the statement is true. Otherwise, select No.

NOTE: Each correct selection is worth one point.

Statement	Yes	No
You can use a text classification model in AI Builder to retrieve text and analyze its meaning.	<input type="radio"/>	<input type="radio"/>
You can tag Instagram posts that mention your new product.	<input type="radio"/>	<input type="radio"/>
You can send results about the number of mentions of your new product in Instagram to Power BI for inclusion on a dashboard.	<input type="radio"/>	<input type="radio"/>

- A. Mastered  
B. Not Mastered

Answer: A

Explanation:

Reference:

<https://docs.microsoft.com/en-us/ai-builder/text-classification-model-in-flow>

NEW QUESTION 81

- (Exam Topic 5)

You plan to use Microsoft Flow to monitor what people are saying about your company's products. You store the feedback for research and development purposes.

You need to recommend Flow components to use for the solution.

To answer, drag the appropriate components to the correct requirements. Each component may be used once, more than once, or not at all. You may need to drag the split bar between panes or scroll to view content.

NOTE: Each correct selection is worth one point.

Components	Requirement	Component
action		
expression	Retrieve the top five posts from your company's Facebook page.	Component
service	Enter the resulting posts into the product database.	Component
trigger	Combine author and link fields into a single field.	Component
flow type	Run flow every hour.	Component

- A. Mastered  
B. Not Mastered

Answer: A

Explanation:

Box 1: Trigger

A trigger is something that triggers or starts the workflow. It could be a new file uploaded to a document library, a new item created in the list or an email sent to your Inbox – something that will start (kick-off the workflow).

There are two types of triggers:

- > Automatic trigger is pre-programmed into the workflow based on a certain rule (i.e. new document or item created, email sent, etc.)
- > Manual Trigger is a trigger initiated by a user. Unlike with automatic trigger above, the workflow will only start when initiated manually by the end user (for example, from the Document Library for a selected file). Manual trigger is only supported for certain types of workflows (i.e. Get feedback from your manager for the selected file)

Box 2: action

An action is something that occurs as a result of the workflow. Box 3: expression

Sometimes users just need to do basic operations like getting the current time, adding numbers together, or replacing a part of a string of text. That's possible inline in any flow action. Microsoft Flow leverages the same Workflow Definition Language used by Azure Logic apps. For new users who are unfamiliar with the expression language, there is an inline help experience that shows how to use each expression as they build out their flow.

Box 4: flow type

There are four different Flow types that you can choose from when starting out. You can create a scheduled flow, automated flow, instant flow, or a business process flow.

Reference:

<https://sharepointmaven.com/3-major-components-microsoft-flow/> <https://www.avepoint.com/blog/office-365/office-365-automation/> <https://flow.microsoft.com/de-de/blog/use-expressions-in-actions/>

NEW QUESTION 84

- (Exam Topic 5)

You need to use Microsoft Flow to perform data-management tasks when users interact with the sales opportunities in Dynamics 365. Which three types of triggers can you use? Each correct answer presents a complete solution. NOTE: Each correct selection is worth one point.

- A. record requested
- B. record deletion
- C. record creation
- D. record updated
- E. record selected

Answer: BCD

Explanation:

Triggers like When a record is created, When a record is updated, and When a record is deleted initiate your flow within a few minutes of the event occurring. In rare cases, your flow can take up to 2 hours to trigger.

Reference:  
<https://docs.microsoft.com/en-us/power-automate/connection-dynamics365>

NEW QUESTION 85

- (Exam Topic 5)

A company uses Dynamics 365 Supply Chain Management. You need to use Microsoft Flow to automate the process of receiving and tracking raw materials. Which type of connector should you use?

- A. Common Data Service
- B. Dynamics 365
- C. Dynamics 365 for Fin & Ops
- D. Dynamic Signal

Answer: A

Explanation:

Dynamics 365 for Finance and Operations is now being licensed as Dynamics 365 Finance and Dynamics 365 Supply Chain Management. You can use Common Data Service to enable the flow of data between Finance and Operations apps and Dynamics 365 Sales.

Reference:  
<https://docs.microsoft.com/en-us/dynamics365/fin-ops-core/dev-itpro/data-entities/data-integration-cds>

NEW QUESTION 90

- (Exam Topic 5)

You are learning about Power Apps and how to use triggers. Which objects should you use? To answer, select the appropriate options in the answer area. NOTE: Each correct selection is worth one point.

Answer Area

Statement	Component
A Power Apps app can trigger this when a condition is met.	<div>connector</div> <div>Power Automate flow</div> <div>gateway</div> <div>solution</div>
Actions and triggers are properties of a	<div>connector</div> <div>gateway</div> <div>solution</div>

- A. Mastered
- B. Not Mastered

Answer: A

Explanation:

Answer Area

Statement	Component
A Power Apps app can trigger this when a condition is met.	<div>Power Automate flow</div>
Actions and triggers are properties of a	<div>connector</div>

NEW QUESTION 94

- (Exam Topic 5)

You build a flow using a template. You want to add support for additional business scenarios. You need to ensure that the new workflow does not break existing functionality. Which flow editing utilities should you use? To answer, drag the appropriate tools to the correct requirements. Each tool may be used once, more than once, or not at all You may need to drag the split bar between panes or scroll to view content.

NOTE: Each correct selection is worth one point.

Tools

Test

Flow Checker

Answer Area

Requirement

Tool

Check the new flow for any errors or warnings.

Run the flow using previously processed data.

Monitor the flow as it is running.

Tool

Tool

Tool

- A. Mastered
- B. Not Mastered

Answer: A

Explanation:

Box 1: Flow Checker

The Flow checker feature will promote higher quality flows by ensuring you follow best practices. By running the checker, you will be able to get answers to questions like: which areas of my flow implementation pose a performance or reliability risk?

For each issue identified, the Flow checker points to specific occurrences within the flow where improvements may be required. And more importantly, you learn how to implement these improvements by following detailed guidance.

Box 2: Test

Box 3: Test Reference:

<https://flow.microsoft.com/en-us/blog/flow-checker-four-connectors/> <https://docs.microsoft.com/en-us/power-automate/modern-approvals>

NEW QUESTION 99

- (Exam Topic 5)

You need to build a Power Virtual Agents chatbot for a company.

Which components should you use? To answer, drag the appropriate components to the correct requirements. Each component may be used once, more than once, or not at all. You may need to drag the split bar between panes or scroll to view content.

NOTE: Each correct selection is worth one point.

Components

Entity

Variable

Trigger Phrase

Answer Area

Requirement

Component

Identify keywords or questions and relate them to issues.

Component

Store a response that a user enters for later use.

Component

Identify a specific type of information from a user response.

Component

- A. Mastered
- B. Not Mastered

Answer: A

Explanation:

Components

Entity

Variable

Trigger Phrase

Answer Area

Requirement

Component

Identify keywords or questions and relate them to issues.

Entity

Store a response that a user enters for later use.

Trigger Phrase

Identify a specific type of information from a user response.

Variable

NEW QUESTION 104

- (Exam Topic 5)

A company uses Dynamics 365 Supply Chain Management and Dynamics 365 Finance. User account data must be synchronized between the two system. You need to ensure that the synchronized data is stored in one place. What should you use?

- A. SQLServer
- B. Common Data Service
- C. Azure Active Directory
- D. Azure IoT Central

Answer: B



**Explanation:**

Reference:

<https://docs.microsoft.com/en-us/power-platform/admin/data-integrator>

**NEW QUESTION 107**

- (Exam Topic 5)

You have a Power Automate flow that saves attachments from emails into OneDrive for Business. You need to determine why the flow is not working. What are three possible ways to achieve the goal? Each correct answer presents a complete solution. NOTE: Each correct selection is worth one point.

- A. Navigate to the Power Automate web portal and click view notifications.
- B. Enable Repair Tips for the flow.
- C. Navigate to the Action Items section of the Power Automate portal.
- D. Navigate to the Power Automate admin center and view the projects.
- E. Navigate to the flow and view the run history.

**Answer:** ABE

**Explanation:**

Reference:

<https://docs.microsoft.com/en-us/power-automate/fix-flow-failures>

**NEW QUESTION 111**

- (Exam Topic 5)

A company uses Dynamics 365 Customer Service. The company uses a manual process to manage call escalations. You must use Power Automate to automate the process for routing escalated calls. You need to create the flow. Which type of connector should you use?

- A. Microsoft Excel
- B. Common Data Service
- C. Office 365 Users

**Answer:** B

**NEW QUESTION 116**

- (Exam Topic 5)

A company uses Microsoft Flow. Each time a work order is created, a service manager must review and approve the work order before a worker is dispatched. You need to create a flow to enforce the process. What should you create?

- A. plug-in
- B. approval flow
- C. business rule
- D. team flow
- E. instant flow

**Answer:** B

**Explanation:**

With Power Automate, you can manage the approval of documents or processes across several services, including SharePoint, Dynamics 365, Salesforce, OneDrive for Business, Zendesk, or WordPress. Reference:  
<https://docs.microsoft.com/en-us/power-automate/modern-approvals>

**NEW QUESTION 120**

- (Exam Topic 5)

For which scenarios can you use Power Automate?  
For each of the following statements, select Yes if the statement is true. Otherwise, select No. NOTE: Each correct selection is worth one point.

Statement	Yes	No
Notify team members when a response is recorded in a form in Microsoft Forms.	<input type="radio"/>	<input type="radio"/>
When email is received, save email attachments to OneDrive for Business.	<input type="radio"/>	<input type="radio"/>
Receive notifications when negative comments about the company are posted on Twitter.	<input type="radio"/>	<input type="radio"/>

- A. Mastered
- B. Not Mastered

**Answer:** A

**Explanation:**

Reference:

<https://flow.microsoft.com/en-us/galleries/public/templates/b923bbd04bda11e78896d10a96d3fac3/notify-the-tea> <https://flow.microsoft.com/en-us/galleries/public/templates/65ceb79430ef4956a0855fbe09249cdf/save-office-36> <https://flow.microsoft.com/en-us/blog/get-notified-of-negative-posts/>

NEW QUESTION 122

- (Exam Topic 5)

A company is using Power Automation to automate business processes. You need to recommend triggers for Instant flows. What trigger types should you recommend? To answer, select the appropriate options in the answer area. NOTE: Each correct selection is worth one point.

Requirement	Trigger type
Run a flow when the user presses a button in a canvas app.	<div><div></div><div>PowerApps for a selected row manually trigger a flow for a selected file (OneDrive for a Business)</div></div>
Run a flow when user presses a button in the mobile Flow app.	<div><div></div><div>PowerApps for a selected row manually trigger a flow for a selected file (SharePoint)</div></div>

- A. Mastered
- B. Not Mastered

Answer: A

Explanation:

Reference:  
<https://docs.microsoft.com/en-us/powerapps/maker/canvas-apps/using-logic-flows> <https://www.o365dude.com/2017/07/15/flow-buttons-the-hidden-gem-of-microsoft-flow/>

NEW QUESTION 124

- (Exam Topic 5)

A company has a website. The website includes a form that allows the company to collect information about leads. You need to set up an automated workflow to create leads in Dynamics 365 Sales when leads are created on the company's custom website. What should you create?

- A. Task Flow
- B. Power Automate flow
- C. Dynamics 365 workflow
- D. Business Process Flow

Answer: B

Explanation:

Reference:  
<https://trellispoint.com/create-crm-leads-using-microsoft-flow/>

NEW QUESTION 125

- (Exam Topic 6)

You need to create a mobile application which will allow sales associates to enter customer sales leads. Which four actions should you perform in sequence? To answer, move the appropriate actions from the list of actions to the answer area and arrange them in the correct order.

Actions	Answer area
Save the app.	
Add components to the app.	
Publish the app.	
Add flows to the app.	
Go to the Office 365 admin center.	
Create a new Power Apps app.	

- A. Mastered
- B. Not Mastered

Answer: A

Explanation:

Reference:  
<https://docs.microsoft.com/en-us/powerapps/maker/model-driven-apps/build-first-model-driven-app>

NEW QUESTION 129

- (Exam Topic 6)

You are planning to allow members of your team to test your chatbot. You must ensure this is done in a secure way. A team member named User1 must test the chatbot. You need to ensure that User1 can complete testing. What should you do?

- A. Sign in to the authoring environment as the chatbot author.
- B. Sign in to Microsoft Azure DevOps as the chatbot author.
- C. Sign in to Microsoft Azure DevOps as User1.
- D. Sign in to the authoring environment as User1.

Answer: A

NEW QUESTION 131

- (Exam Topic 6)

A company uses Dynamics 365 Supply Chain Management. When a sales order is created for one of the customers that a specific user manages, a Microsoft Outlook task must be created to remind the user to perform any follow up activities that are required. You need to implement the functionality to create Outlook tasks. Which feature should you use?

- A. Power Automate
- B. AI Builder
- C. Power BI
- D. Business Events
- E. Common Data Service

Answer: A

NEW QUESTION 133

- (Exam Topic 6)

You need to implement Microsoft Business Applications along with the Microsoft Power Platform. Which three Microsoft products are pan of the Power Platform? Each correct answer presents a complete solution. NOTE: Each correct selection is worth one point.

- A. Power Apps
- B. Azure Active Directory
- C. Power Automate
- D. Azure Machine learning
- E. Power BI

Answer: ACE

NEW QUESTION 137

- (Exam Topic 6)

You are creating a Power Automate flow. You need to retrieve data from several sources deluding Microsoft Excel, Azure Data lake, and GitHub. What should you use? To answer, drag the appropriate components to the correct data sources. Each component may be used once, more than once, or not at all. You may need to drag the split bar between panes or scroll to view content. NOTE: Each correct selection Is worth one point

Components

Connector

Expression

Formula

Answer Area

Data source	Component
Microsoft Excel	
Azure Data Lake	
GitHub	

- A. Mastered
- B. Not Mastered

Answer: A

Explanation:

Components

Connector

Expression

Formula

Answer Area

Data source	Component
Microsoft Excel	Formula
Azure Data Lake	Connector
GitHub	Expression

NEW QUESTION 140

- (Exam Topic 6)

You create a Power Virtual Agents chatbot for use with Microsoft Teams. You are testing the chatbot. Testers report the following issues:

>

Changes that you make to the chatbot are not seen by testers.

➤ When users enter the word refund the chatbot must ask the user the product for which they would like a refund. The chatbot does not ask the user for product information.

You need to determine what needs to be done to fix the issues.

What should you do? To answer, select the appropriate options in the answer area.

NOTE: Each correct selection is worth one point.

Missing changes

Create a new chatbot.

Publish the chatbot.

Save the topic.

Share the chatbot.

Refund responses are not working as expected.

Change security.

Create a refund topic.

Create a refund chatbot.

- A. Mastered
- B. Not Mastered

**Answer:** A

**Explanation:**

Reference:

<https://docs.microsoft.com/en-us/power-virtual-agents/publication-fundamentals-publish-channels>

NEW QUESTION 141

- (Exam Topic 6)

A company is using Power Automate to automate business processes. You need to run a flow when a user presses a button in an app. Which trigger type should you recommend?

- A. Power Apps
- B. for a selected row
- C. manually trigger a flow

**Answer:** A

**Explanation:**

Reference:

<https://docs.microsoft.com/en-us/powerapps/maker/canvas-apps/using-logic-flows>

NEW QUESTION 143

- (Exam Topic 6)

You need to explain the major components of the Common Data Model (CDM) and their functions. Match each term to its definition.

Instructions: To answer, drag the appropriate term from the column on the left to its definition on the right. Each term may be used once, more than once, or not at all. Each correct match is worth one point.

NOTE: Each correct selection is worth one point.

Tools

Entities

Common Data Service

Workflows

Data connectors

Common Data Model

Answer Area

Purpose

Helps jumpstart application development by leveraging business logic, security, and integrations

A set of records used to store data

Tool

- A. Mastered
- B. Not Mastered

**Answer:** A

**Explanation:**

Tools

Entities

Common Data Service

Workflows

Data connectors

Common Data Model

Answer Area

Purpose

Helps jumpstart application development by leveraging business logic, security, and integrations

A set of records used to store data

Tool

Common Data Service

Entities



NEW QUESTION 144

- (Exam Topic 6)

You are a sales manager for a large retail organization.

You are creating a Power Apps app that will display customer product purchase information from your old point-of-sale (POS) system and need to link those sales to the customer accounts and product sales in Dynamics 365 Commerce.

You need to use the appropriate component. What should you use?

- A. business process flow
- B. business rule
- C. Common Data Service
- D. entity metadata

Answer: C

NEW QUESTION 146

- (Exam Topic 6)

A company is creating a canvas app to track and analyze customer visits to their retail stores. Data about customer visits is stored on-premises at each retail store location. The app must display data about customer visits when users launch the app. You need to ensure that the data is available for consumption by the app.

Which tool should you use?

- A. Data gateway
- B. Data source
- C. Connector
- D. Microsoft Dataverse
- E. Power Automate

Answer: A

NEW QUESTION 149

- (Exam Topic 6)

A company plans to use Power Automate to automate tasks.

Match each flow type to its description to answer, drag the appropriate now type from the column on the left to its description on the right. Each option may be used once, more than once, or not at all.

NOTE: Each correct match is worth one point.

Flow types

automated

business process

scheduled

instant

Answer Area

Description

a flow that runs after it is triggered by an event

a flow that guides a user through a set of tasks

a flow that runs after a specified number of days

a flow that allows you to start tasks on demand

Flow type

Flow type

Flow type

Flow type

Flow type

- A. Mastered
- B. Not Mastered

Answer: A

Explanation:

Flow types

automated

business process

scheduled

instant

Answer Area

Description

a flow that runs after it is triggered by an event

a flow that guides a user through a set of tasks

a flow that runs after a specified number of days

a flow that allows you to start tasks on demand

Flow type

automated

business process

scheduled

instant

NEW QUESTION 151

- (Exam Topic 6)

You are creating a Power Automate approval flow.

Instructions: For each of the following statements, select Yes if the statement is true. Otherwise, select No.

NOTE: Each correct selection is worth one point.

Statements	Yes	No
The addition of an expense report to a Microsoft OneDrive folder can initiate an approval flow.	<input type="radio"/>	<input type="radio"/>
Approvals must follow a sequential order of approval.	<input type="radio"/>	<input type="radio"/>

- A. Mastered
- B. Not Mastered

Answer: A

Explanation:

Box 1: Yes

Box 2: No

Parallel approvals, integrated approvals, and unanimous approvals are also allowed. Reference:

<https://docs.microsoft.com/en-us/power-automate/modern-approvals> <https://docs.microsoft.com/en-us/power-automate/create-approval-response-options>

NEW QUESTION 156

- (Exam Topic 6)

A company is evaluating ways that they can implement AI Builder.

For which two scenarios can you use AI Builder? Each correct selection presents a complete solution. NOTE: Each correct selection is worth one point.

- A. Send emails to all ai users who subscribe to a service.
- B. Synchronize data from an external database.
- C. Collect data from several data sources and display a dashboard that shows trending data.
- D. Interpret images and perform an action on the image.
- E. Detect patterns in data and predict outcomes

Answer: BD

NEW QUESTION 161

- (Exam Topic 6)

A company uses Power Apps canvas apps.

When a user opens Power Apps Studio in a browser and selects Apps I can edit, they do not see an app that they need to modify.

You need to determine why the user cannot see the app.

What are three possible reasons? Each correct answer presents a complete solution. NOTE: Each correct selection is worth one point.

- A. The user selected an incorrect Power Apps environment.
- B. The user has not been granted the System Customizer role.
- C. The user has not been set as the app co-owner.
- D. The app has not been shared with the user.
- E. The environment does not have a Common Data Service database.

Answer: ACD

Explanation:

Reference:

<https://docs.microsoft.com/en-us/powerapps/maker/canvas-apps/edit-app>

NEW QUESTION 162

- (Exam Topic 6)

You are building Power BI visualizations for a team.

For each of the following statements, select Yes if the statement is true. Otherwise, select No. NOTE: Each correct selection is worth one point.

Answer Area			
Statement		Yes	No
Power BI can only retrieve data from up to two different sources for each dashboard.		<input type="radio"/>	<input type="radio"/>
Power BI visualizations can be used in canvas apps and model driven apps.		<input type="radio"/>	<input type="radio"/>
Power BI can display charts and list boxes on dashboards.		<input type="radio"/>	<input type="radio"/>

- A. Mastered
- B. Not Mastered

Answer: A

Explanation:

Yes

Yes Yes

NEW QUESTION 166

- (Exam Topic 6)

A company plans to use Power BI to visualize data from business systems.

For each of the following statements, select Yes if the statement is true. Otherwise, select No.

NOTE: Each correct selection is worth one point.

Statement	Yes	No
You can display data aggregates and raw data in a Power BI report.	<input type="radio"/>	<input type="radio"/>
You can display related data from multiple sources in the same Power BI report.	<input type="radio"/>	<input type="radio"/>

- A. Mastered
- B. Not Mastered

Answer: A

Explanation:

Statement	Yes	No
You can display data aggregates and raw data in a Power BI report.	<input checked="" type="radio"/>	<input type="radio"/>
You can display related data from multiple sources in the same Power BI report.	<input type="radio"/>	<input checked="" type="radio"/>

NEW QUESTION 169

- (Exam Topic 6)

Match each tool to its task. To answer, drag the appropriate tool from the column on the left to its task on the right. Each tool may be used once, more than once, or not at all. NOTE: Each correct match is worth one point.

Tools

Power BI

Power Automate

Power Apps

Answer Area

Task

Automate workflows.

Trigger an action from an event.

Create a custom mobile data entry screen.

Tool

Tool

Tool

Tool

- A. Mastered
- B. Not Mastered

Answer: A

Explanation:

Reference:

<https://docs.microsoft.com/en-us/power-automate/getting-started> <https://docs.microsoft.com/en-us/powerapps/maker/portals/compose-page#add-form>

NEW QUESTION 173

- (Exam Topic 6)

You are authoring a Power Virtual Agents chatbot for a company for each of the following statements, select Yes if the statement is true. Otherwise, select No. NOTE: Each correct selection is worth one point.

Statement	Yes	No
When escalating to a live person from a chatbot, the customer must restate their issue and other information collected.	<input type="radio"/>	<input type="radio"/>
You can customize the greeting topic for every chatbot that you author.	<input type="radio"/>	<input type="radio"/>

- A. Mastered
- B. Not Mastered

Answer: A

Explanation:

Statement	Yes	No
When escalating to a live person from a chatbot, the customer must restate their issue and other information collected.	<input checked="" type="radio"/>	<input type="radio"/>
You can customize the greeting topic for every chatbot that you author.	<input checked="" type="radio"/>	<input type="radio"/>

NEW QUESTION 175

- (Exam Topic 6)

Match each tool to its task. To answer, drag the appropriate tool from the column on the left to its task on the right. Each tool may be used once, more than once, or not at all.

NOTE: Each correct match is worth one point.

Tools

Power BI

Power Automate

Power Apps

Answer Area

Task

Automate workflows.

Trigger an action from an event.

Create a custom mobile data entry screen.

Tool

- A. Mastered
- B. Not Mastered

Answer: A

Explanation:

Tools

Power BI

Power Automate

Power Apps

Answer Area

Task

Automate workflows.  
Trigger an action from an event.  
Create a custom mobile data entry screen.

Tool

Power Automate

Power BI

Power Apps

NEW QUESTION 177

- (Exam Topic 6)  
You plan to use Power Automate to monitor what people are saying about your company's products. You store the feedback for research and development purposes.  
You need to recommend Power Automate components to use for the solution.  
To answer drag the appropriate components to the correct requirements. Each component may be used once, more than once, or not at all. You may need to drag the split Car between panes or scroll to view content.  
NOTE: Each correct selection Is worth one point

Components

action

expression

service

trigger

Answer Area

Requirement

Retrieve the top five posts from your company's Facebook page.  
Enter the resulting posts into the product database.  
Combine author and link fields into a single field.  
Run a flow every hour.

Component

Component

Component

Component

Component

- A. Mastered
- B. Not Mastered

Answer: A

Explanation:

Components

action

expression

service

trigger

Answer Area

Requirement

Retrieve the top five posts from your company's Facebook page.  
Enter the resulting posts into the product database.  
Combine author and link fields into a single field.  
Run a flow every hour.

Component

action

action

expression

trigger

NEW QUESTION 179

- (Exam Topic 6)  
User1 creates several Power BI dashboards for a company. User1 shares a dashboard with User2 who works for another company. User2 reports that she is able to view the dashboard User2 forwards the email containing the dashboard sharing link that she received to User3.  
User3 reports that he receives an error message when he selects the link to view the dashboard. User3 can view a dashboard that he has created.  
You need to determine why User 3 receives an error. What is the issue?  
  
A. Forwarding the email does not share the dashboard with User3.  
B. User3 is running an out-of-date version of Power BI and must upgrade to a newer version.  
C. User1 is signed in using the wrong organizational account for Power BID- User2 is signed in to the dashboard and must sign out before User3 can sign in

Answer: A

NEW QUESTION 182

.....



## Thank You for Trying Our Product

### We offer two products:

1st - We have Practice Tests Software with Actual Exam Questions

2nd - Questions and Answers in PDF Format

### PL-900 Practice Exam Features:

- \* PL-900 Questions and Answers Updated Frequently
- \* PL-900 Practice Questions Verified by Expert Senior Certified Staff
- \* PL-900 Most Realistic Questions that Guarantee you a Pass on Your First Try
- \* PL-900 Practice Test Questions in Multiple Choice Formats and Updates for 1 Year

**100% Actual & Verified — Instant Download, Please Click**  
**[Order The PL-900 Practice Test Here](#)**