

## Exam Questions 300-410

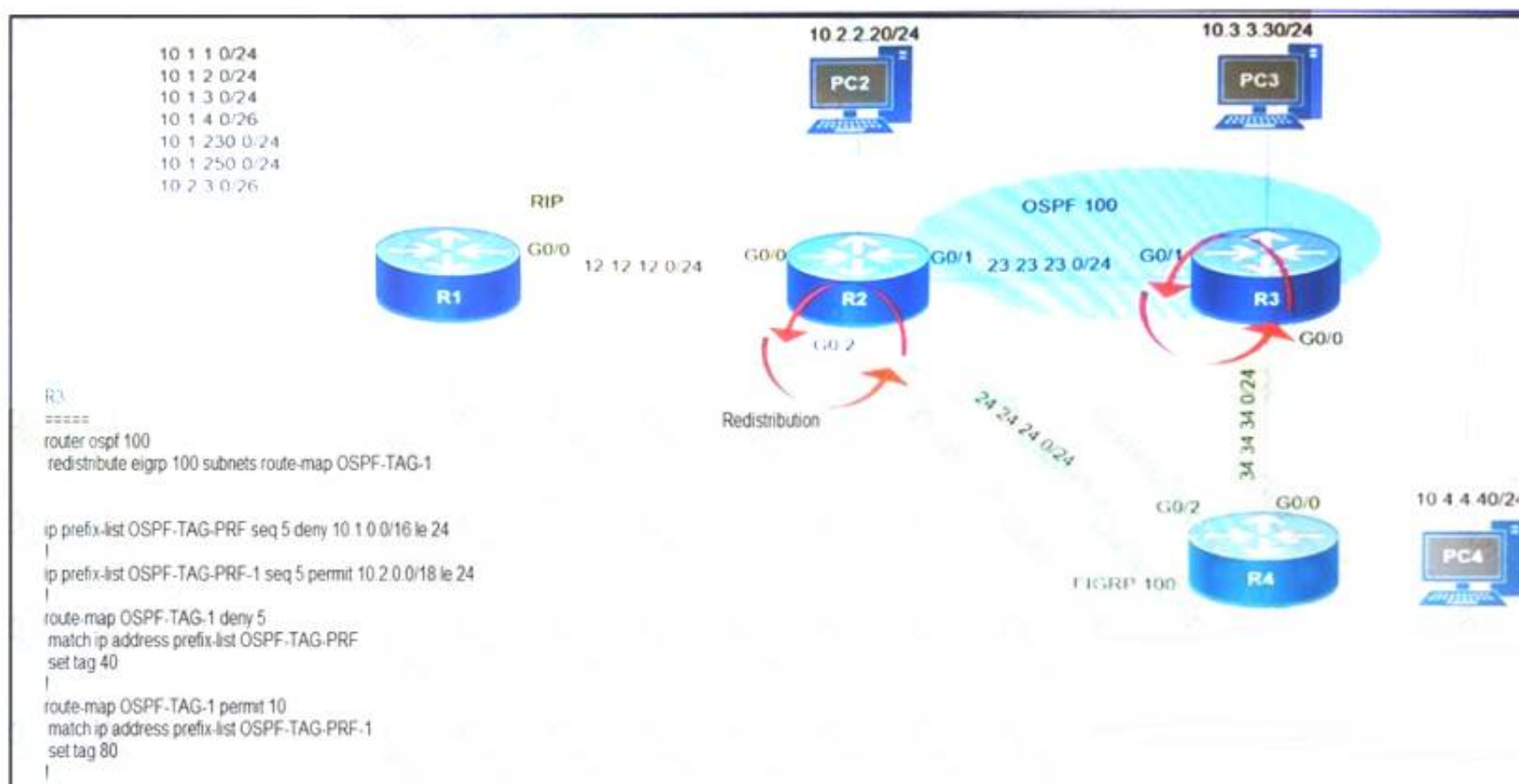
Implementing Cisco Enterprise Advanced Routing and Services (ENARSI)

<https://www.2passeasy.com/dumps/300-410/>



### NEW QUESTION 1

Refer to the exhibit.



Which subnet is redistributed from EIGRP to OSPF routing protocols?

- A. 10.2.2.0/24
- B. 10.1.4.0/26
- C. 10.1.2.0/24
- D. 10.2.3.0/26

Answer: A

### NEW QUESTION 2

An engineer is trying to copy an IOS file from one router to another router by using TFTP. Which two actions are needed to allow the file to copy? (Choose two.)

- A. Copy the file to the destination router with the copy tftp: flash: command
- B. Enable the TFTP server on the source router with the tftp-server flash: <filename> command
- C. TFTP is not supported in recent IOS versions, so an alternative method must be used
- D. Configure a user on the source router with the username tftp password tftp command
- E. Configure the TFTP authentication on the source router with the tftp-server authentication local command

Answer: AB

### NEW QUESTION 3

Drag and drop the SNMP attributes in Cisco IOS devices from the left onto the correct SNMPv2c or SNMPV3 categories on the right.

community string

username and password

authentication

no encryption

privileged

read-only

SNMPv2c

SNMPv3

- A. Mastered
- B. Not Mastered

Answer: A

Explanation:

community string

username and password

authentication

no encryption

privileged

read-only

SNMPv2c

community string

no encryption

read-only

SNMPv3

username and password

authentication

privileged

**NEW QUESTION 4**  
Drag and drop the DHCP messages from the left onto the correct uses on the right.

DHCPACK	server-to-client communication, refusing the request for configuration parameters
DHCPINFORM	client-to-server communication, indicating that the network address is already in use
DHCPNAK	server-to-client communication with configuration parameters, including committed network address
DHCPDECLINE	client-to-server communication, asking for only local configuration parameters that the client has already externally configured as an address

- A. Mastered  
 B. Not Mastered

Answer: A

Explanation:

DHCPACK	DHCPNAK
DHCPINFORM	DHCPDECLINE
DHCPNAK	DHCPACK
DHCPDECLINE	DHCPINFORM

#### NEW QUESTION 5

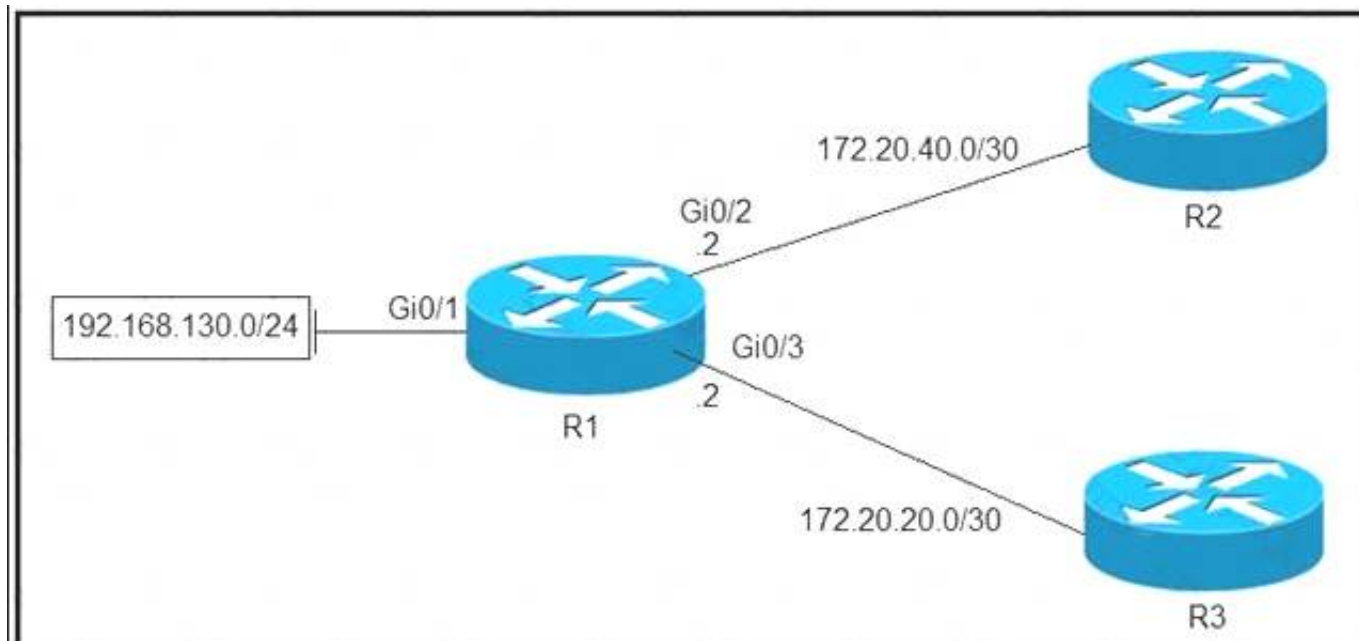
Which configuration adds an IPv4 interface to an OSPFv3 process in OSPFv3 address family configuration?

- A. router ospfv3 1 address-family ipv4  
 B. Router(config-router)#ospfv3 1 ipv4 area 0  
 C. Router(config-if)#ospfv3 1 ipv4 area 0  
 D. router ospfv3 1 address-family ipv4 unicast

Answer: B

#### NEW QUESTION 6

Refer to the exhibit.



Which configuration configures a policy on R1 to forward any traffic that is sourced from the 192.168.130.0/24 network to R2?



- A. **access-list 1 permit 192.168.130.0 0.0.0.255**  
**!**  
**interface Gi0/2**  
**ip policy route-map test**  
**!**  
**route-map test permit 10**  
**match ip address 1**  
**set ip next-hop 172.20.20.2**
- B. **access-list 1 permit 192.168.130.0 0.0.0.255**  
**!**  
**interface Gi0/1**  
**ip policy route-map test**  
**!**  
**route-map test permit 10**  
**match ip address 1**  
**set ip next-hop 172.20.40.2**
- C. **access-list 1 permit 192.168.130.0 0.0.0.255**  
**!**  
**interface Gi0/2**  
**ip policy route-map test**  
**!**  
**route-map test permit 10**  
**match ip address 1**  
**set ip next-hop 172.20.20.1**
- D. **access-list 1 permit 192.168.130.0 0.0.0.255**  
**!**  
**interface Gi0/1**  
**ip policy route-map test**  
**!**  
**route-map test permit 10**  
**match ip address 1**  
**set ip next-hop 172.20.40.1**

- A. Option A  
 B. Option B  
 C. Option C  
 D. Option D

**Answer:** D

#### NEW QUESTION 7

Refer to the exhibit.

```
R1(config) # do show running-config | section line|username
username cisco secret 5 $1$yb/o$L3G5cXODxpYMSJ70PzEyo0
line con 0
  logging synchronous
line vty 0 4
  login local
  transport input telnet
R1(config) # logging console 7
R1(config) # do debug aaa authentication
R1(config) #
```

An administrator that is connected to the console does not see debug messages when remote users log in. Which action ensures that debug messages are displayed for remote logins?

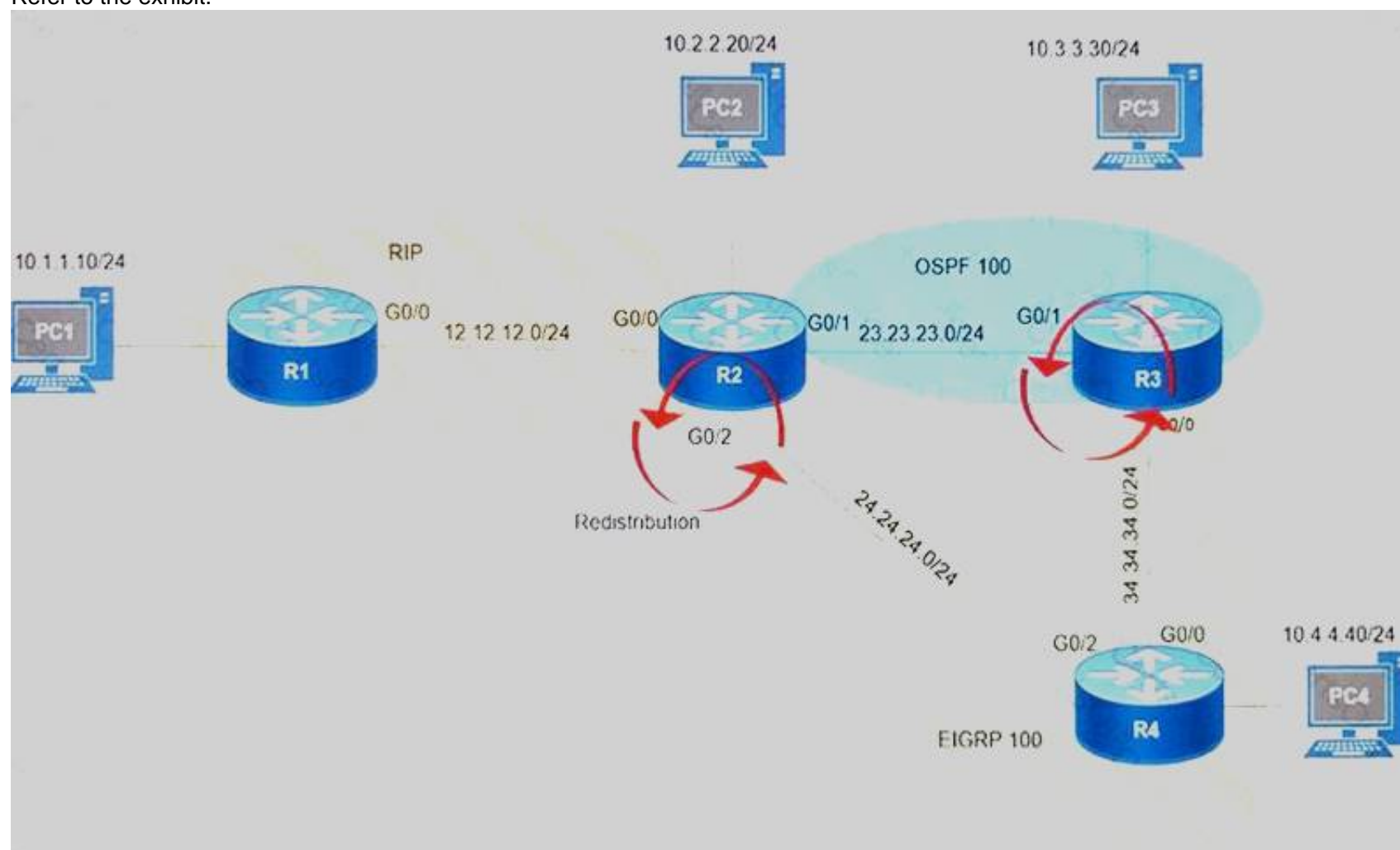
- A. Enter the transport input ssh configuration command.  
 B. Enter the terminal monitor exec command.  
 C. Enter the logging console debugging configuration command.

D. Enter the aaa new-model configuration command.

Answer: B

### NEW QUESTION 8

Refer to the exhibit.



After redistribution is enabled between the routing protocols; PC2, PC3, and PC4 cannot reach PC1. Which action can the engineer take to solve the issue so that all the PCs are reachable?

- A. Set the administrative distance 100 under the RIP process on R2.
- B. Filter the prefix 10.1.1.0/24 when redistributed from OSPF to EIGRP.
- C. Filter the prefix 10.1.1.0/24 when redistributed from RIP to EIGRP.
- D. Redistribute the directly connected interfaces on R2.

Answer: B

### NEW QUESTION 9

Refer to the exhibit.

```
access-list 100 deny tcp any any eq 465
access-list 100 deny tcp any eq 465 any
access-list 100 permit tcp any any eq 80
access-list 100 permit tcp any eq 80 any
access-list 100 permit udp any any eq 443
access-list 100 permit udp any eq 443 any
```

During troubleshooting it was discovered that the device is not reachable using a secure web browser. What is needed to fix the problem?

- A. permit tcp port 443
- B. permit udp port 465
- C. permit tcp port 465
- D. permit tcp port 22

Answer: A

### NEW QUESTION 10

What is a prerequisite for configuring BFD?

- A. Jumbo frame support must be configured on the router that is using BFD.
- B. All routers in the path between two BFD endpoints must have BFD enabled.
- C. Cisco Express Forwarding must be enabled on all participating BFD endpoints.
- D. To use BFD with BGP, the timers 3 9 command must first be configured in the BGP routing process.

Answer: C

### NEW QUESTION 10

Refer to the exhibit.

```

!
neighbor 10.222.1.1 route-map SET-WEIGHT in
neighbor 10.222.1.1 remote-as 1
!
ip as-path access-list 200 permit ^690$
ip as-path access-list 200 permit ^1800
!
route-map SET-WEIGHT permit 10
match as-path 200
set local-preference 250
set weight 200

```

A router receiving BGP routing updates from multiple neighbors for routers in AS 690. What is the reason that the router still sends traffic that is destined to AS 690 to a neighbor other than 10.222.1.1?

- A. The local preference value in another neighbor statement is higher than 250.
- B. The local preference value should be set to the same value as the weight in the route map.
- C. The route map is applied in the wrong direction.
- D. The weight value in another statement is higher than 200.

**Answer:** D

#### NEW QUESTION 14

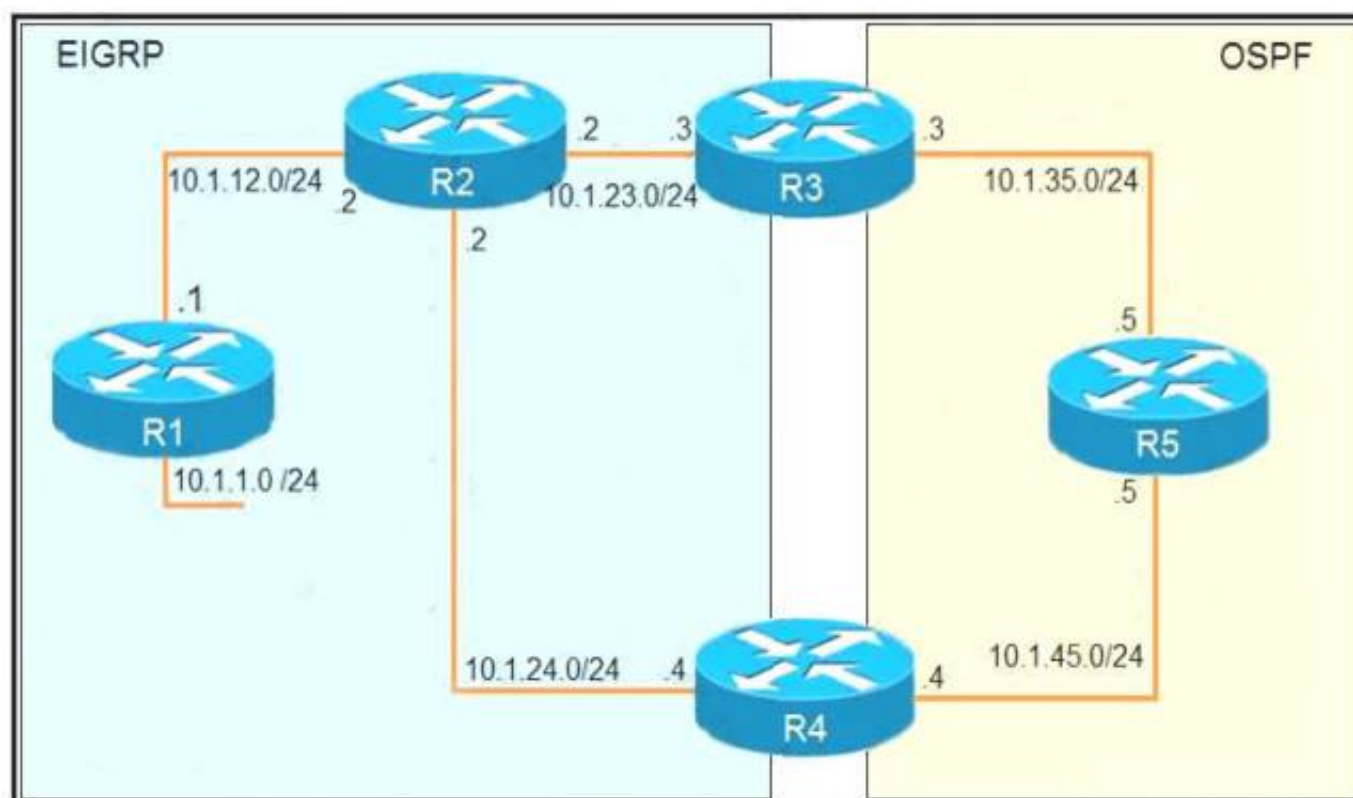
Which attribute eliminates LFAs that belong to protected paths in situations where links in a network are connected through a common fiber?

- A. shared risk link group-disjoint
- B. linecard-disjoint
- C. lowest-repair-path-metric
- D. interface-disjoint

**Answer:** A

#### NEW QUESTION 16

Refer to the exhibit.



```
R1
router eigrp 1
 redistribute connected
 network 10.1.12.0 0.0.0.0

R3
router ospf 1
 redistribute eigrp 1 subnets
 network 10.1.35.0 0.0.0.0 area 0

R4
router eigrp 1
 redistribute ospf 1 metric 2000000 1 255 1 1500
!
router ospf 1
 network 10.1.45.0 0.0.0.0 area 0

R5#traceroute 10.1.1.1

Type escape sequence to abort.
Tracing the route to 10.1.1.1

 0 10.1.35.3 80 msec 44 msec 20 msec
 1 10.1.23.2 44 msec 104 msec 64 msec
 2 10.1.24.4 44 msec 64 msec 40 msec
 3 10.1.45.5 24 msec 40 msec 20 msec
 4 10.1.35.3 92 msec 144 msec 148 msec
 5 10.1.23.2 108 msec 76 msec 80 msec
<output truncated>
```

The output of the trace route from R5 shows a loop in the network. Which configuration prevents this loop?

A)

R3

```
router ospf 1
```

```
 redistribute eigrp 1 subnets route-map SET-TAG
```

```
!
```

```
route-map SET-TAG permit 10
```

```
 set tag 1
```

R4

```
router eigrp 1
```

```
 redistribute ospf 1 metric 2000000 1 255 1 1500 route-map FILTER-TAG
```

```
!
```

```
route-map FILTER-TAG deny 10
```

```
 match tag 1
```

```
!
```

```
route-map FILTER-TAG permit 20
```

B)



```
R3
router eigrp 1
 redistribute OSPF 1 route-map SET-TAG
!
route-map SET-TAG permit 10
 set tag 1
```

```
R4
router eigrp 1
 redistribute ospf 1 metric 2000000 1 255 1 1500 route-map FILTER-TAG
 network 10.1.24.4 0.0.0.0
!
route-map FILTER-TAG deny 10
 match tag 1
!
route-map FILTER-TAG permit 20
```

C)

```
R3
router ospf 1
 redistribute eigrp 1 subnets route-map SET-TAG
!
route-map SET-TAG permit 10
 set tag 1
```

```
R4
router eigrp 1
 redistribute ospf 1 metric 2000000 1 255 1 1500 route-map FILTER-TAG
!
route-map FILTER-TAG permit 10
 match tag 1
```

D)

```
R3
router ospf 1
 redistribute eigrp 1 subnets route-map SET-TAG
!
route-map SET-TAG deny 10
 set tag 1
```

```
R4
router eigrp 1
 redistribute ospf 1 metric 2000000 1 255 1 1500 route-map FILTER-TAG
!
route-map FILTER-TAG deny 10
 match tag 1
```

- A. Option A
- B. Option B
- C. Option C
- D. Option D

**Answer: B**

#### NEW QUESTION 20

Which command allows traffic to load-balance in an MPLS Layer 3 VPN configuration?

- A. multi-paths eibgp 2
- B. maximum-paths 2
- C. maximum-paths ibgp 2
- D. multi-paths 2

**Answer: B**

## NEW QUESTION 22

While troubleshooting connectivity issues to a router, these details are noticed:

- Standard pings to all router interfaces, including loopbacks, are successful.
- Data traffic is unaffected.
- SNMP connectivity is intermittent.
- SSH is either slow or disconnects frequently.

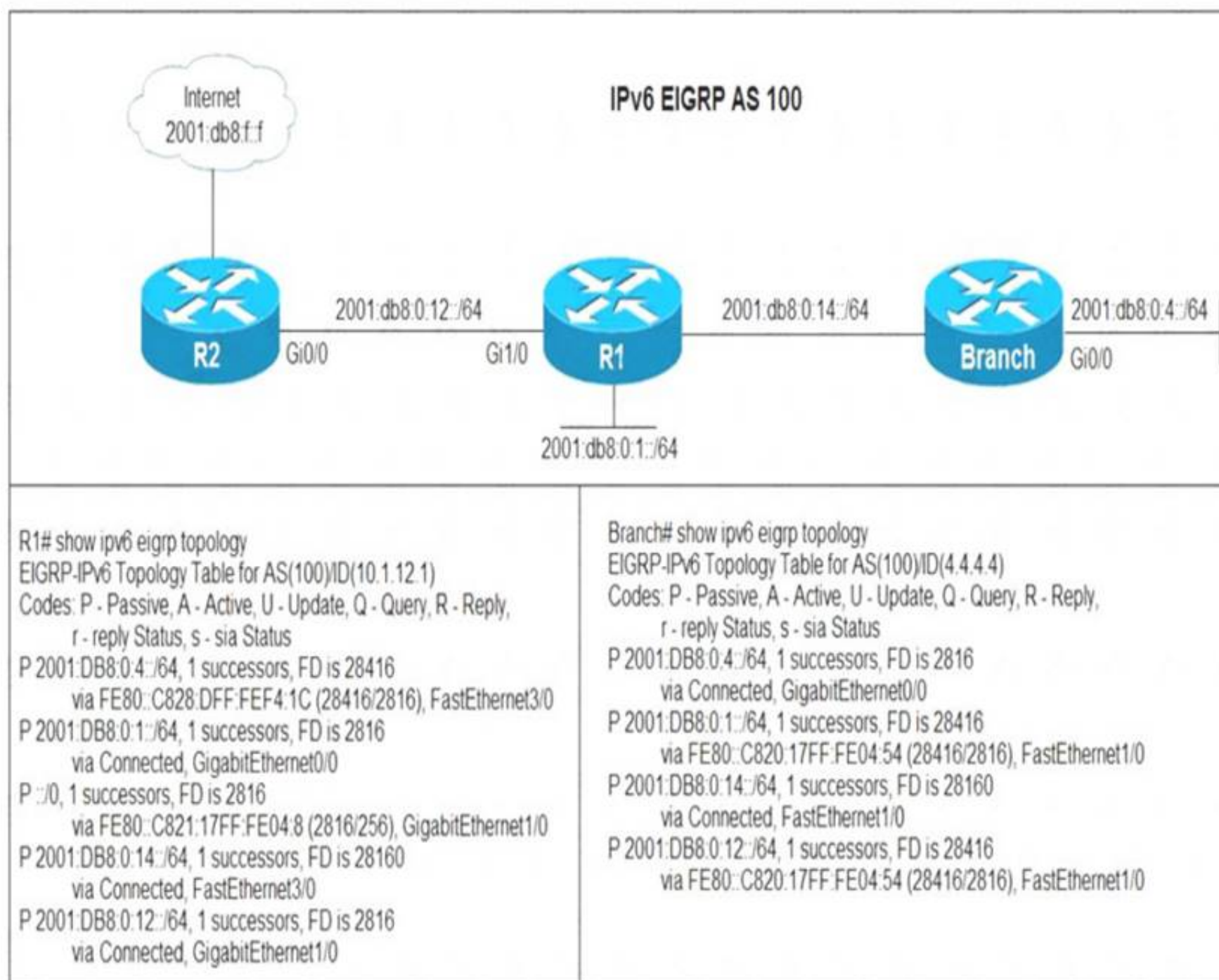
Which command must be configured first to troubleshoot this issue?

- A. show policy-map control-plane
- B. show policy-map
- C. show interface | inc drop
- D. show ip route

Answer: A

## NEW QUESTION 27

Refer to the exhibit.



Users in the branch network of 2001:db8:0:4::/64 report that they cannot access the Internet. Which command is issued in IPv6 router EIGRP 100 configuration mode to solve this issue?

- A. Issue the eigrp stub command on R1.
- B. Issue the no eigrp stub command on R1.
- C. Issue the eigrp stub command on R2.
- D. Issue the no eigrp stub command on R2.

Answer: A

## NEW QUESTION 28

Drag and drop the packet types from the left onto the correct descriptions on the right.

data plane packets	user-generated packets that are always forwarded by network devices to other end-station devices
control plane packets	network device generated or received packets that are used for the creation of the network itself
management plane packets	network device generated or received packets; packets that are used to operate the network
services plane packets	user-generated packets that are forwarded by network devices to other end-station devices, but that require higher priority than the normal traffic by the network devices

- A. Mastered  
 B. Not Mastered

**Answer:** A

**Explanation:**

data plane packets	data plane packets
control plane packets	control plane packets
management plane packets	management plane packets
services plane packets	services plane packets

#### NEW QUESTION 32

Which method changes the forwarding decision that a router makes without first changing the routing table or influencing the IP data plane?

- A. nonbroadcast multiaccess  
 B. packet switching  
 C. policy-based routing  
 D. forwarding information base

**Answer:** C

#### NEW QUESTION 36

Refer to the exhibit.

```
Router#sh ip route ospf
<output omitted>
Gateway is last resort is not set

    10.0.0.0/24 is subnetted, 1 subnets
      o E2   10.0.0.0 [110/20] via 192.168.12.2, 00:00:10, Ethernet0/0
      o     192.168.3.0/24 [110/20] via 192.168.12.2, 00:00:50, Ethernet0/0
Router#

Router#show ip bgp
<output omitted>
      Network          Next Hop      Metric      LocPrf      Weight      Path
>*   192.168.1.1/32     0.0.0.0        0           32768       ?
>*   192.168.3.0       192.168.12.2   20          32768       ?
>*   192.168.12.0      0.0.0.0        0           32768       ?
Router#show running-config | section router bgp
router bgp 65000
 bgp log-neighbor-changes
 redistribute ospf 1
Router#
```



An engineer is trying to redistribute OSPF to BGP, but not all of the routes are redistributed. What is the reason for this issue?

- A. By default, only internal routes and external type 1 routes are redistributed into BGP
- B. Only classful networks are redistributed from OSPF to BGP
- C. BGP convergence is slow, so the route will eventually be present in the BGP table
- D. By default, only internal OSPF routes are redistributed into BGP

**Answer:** A

#### NEW QUESTION 38

Refer to the exhibit.

```
Router#show ip route
<output omitted>
Gateway of last resort is not set

    192.168.1.0/32 is subnetted, 1 subnets
O       192.168.1.1 [110/11] via 192.168.12.1, 16:56:40, Ethernet0/0
    192.168.2.0/24 is variably subnetted, 2 subnets, 2 masks
C       192.168.2.0/24 is directly connected, Loopback0
L       192.168.2.2/32 is directly connected, Loopback0
    192.168.3.0/24 is variably subnetted, 2 subnets, 2 masks
C       192.168.3.0/24 is directly connected, Ethernet0/1
L       192.168.3.1/32 is directly connected, Ethernet0/1
    192.168.12.0/24 is variably subnetted, 2 subnets, 2 masks
C       192.168.12.0/24 is directly connected, Ethernet0/0
L       192.168.12.2/32 is directly connected, Ethernet0/0
Router#show running-config | section ospf
router ospf 1
  summary-address 10.0.0.0 255.0.0.0
  redistribute static subnets
  network 192.168.3.0 0.0.0.255 area 0
  network 192.168.12.0 0.0.0.255 area 0
Router#
```

An engineer is trying to generate a summary route in OSPF for network 10.0.0.0/8, but the summary route does not show up in the routing table. Why is the summary route missing?

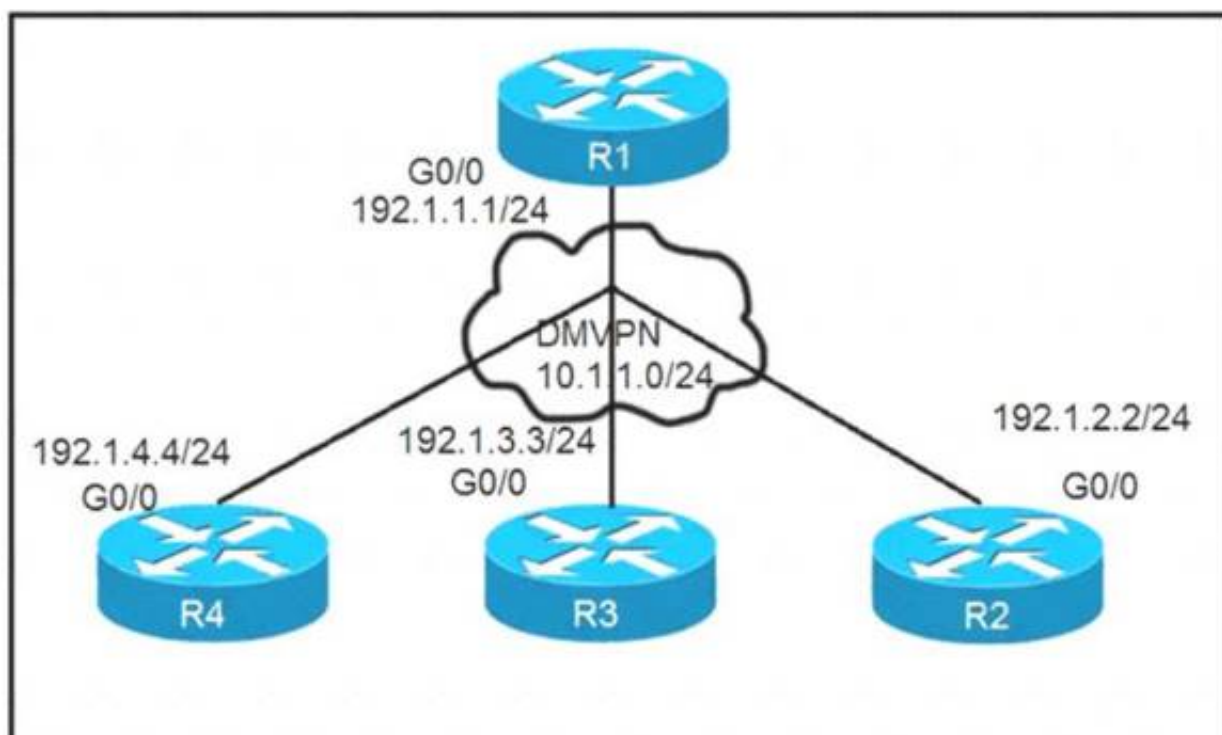
- A. The summary-address command is used only for summarizing prefixes between areas.
- B. The summary route is visible only in the OSPF database, not in the routing table.
- C. There is no route for a subnet inside 10.0.0.0/8, so the summary route is not generated.
- D. The summary route is not visible on this router, but it is visible on other OSPF routers in the same area.

**Answer:** A

#### NEW QUESTION 39

Refer to the exhibits.





```
On R1:
R1(config)# interface tunnel 1
R1(config-if)# ip address 10.1.1.1 255.255.255.0
R1(config-if)# tunnel source 192.1.1.1
R1(config-if)# tunnel mode gre multipoint
R1(config-if)# ip nhrp network-id 111

On R2:
R2(config)# interface tunnel 1
R2(config-if)# ip address 10.1.1.2 255.255.255.0
R2(config-if)# tunnel source FastEthernet0/0
R2(config-if)# tunnel mode gre multipoint
R2(config-if)# ip nhrp network-id 222
R2(config-if)# ip nhrp nhs 10.1.1.1
R2(config-if)# ip nhrp map 10.1.1.1 192.1.1.1

On R3:
R3(config)# interface tunnel 1
R3(config-if)# ip address 10.1.1.3 255.255.255.0
R3(config-if)# tunnel source FastEthernet0/0
R3(config-if)# tunnel mode gre multipoint
R3(config-if)# ip nhrp network-id 333 R3(config-if)# ip nhrp nhs 10.1.1.1
R3(config-if)# ip nhrp map 10.1.1.1 192.1.1.1

On R4: R4(config)# interface tunnel 1
R4(config-if)# ip address 10.1.1.4 255.255.255.0
R4(config-if)# tunnel source FastEthernet0/0
R4(config-if)# tunnel mode gre multipoint
R4(config-if)# ip nhrp network-id 444
R4(config-if)# ip nhrp nhs 10.1.1.1
R4(config-if)# ip nhrp map 10.1.1.1 192.1.1.1
```

Phase-3 tunnels cannot be established between spoke-to-spoke in DMVPN. Which two commands are missing? (Choose two.)

- A. The ip nhrp redirect command is missing on the spoke routers.
- B. The ip nhrp shortcut command is missing on the spoke routers.
- C. The ip nhrp redirect command is missing on the hub router.
- D. The ip nhrp shortcut command is missing on the hub router.
- E. The ip nhrp map command is missing on the hub router.

**Answer:** BC

#### NEW QUESTION 42

R2 has a locally originated prefix 192.168.130.0/24 and has these configurations:

```
ip prefix-list test seq 5 permit 192.168.130.0/24
!
route-map OUT permit10
match ip address prefix-list test
set as-path prepend 65000
```

What is the result when the route-map OUT command is applied toward an eBGP neighbor R1 (1.1.1.1) by using the neighbor 1.1.1.1 route-map OUT out command?

- A. R1 sees 192.168.130.0/24 as two AS hops away instead of one AS hop away.
- B. R1 does not accept any routes other than 192.168.130.0/24
- C. R1 does not forward traffic that is destined for 192.168.30.0/24
- D. Network 192.168.130.0/24 is not allowed in the R1 table

**Answer:** A

#### NEW QUESTION 45

Refer to the exhibit.

```
Router#show access-lists
Standard IP access list 1
  10 permit 192.168.2.2 (1 match)
Router#
Router#show route-map
route-map RM-OSPF-DL, permit, sequence 10
  Match clauses:
    ip address (access-lists): 1
  Set clauses:
  Policy routing matches: 0 packets, 0 bytes
Router#
Router#show running-config | section ospf
router ospf 1
  network 192.168.1.1 0.0.0.0 area 0
  network 192.168.12.0 0.0.0.255 area 0
  distribute-list route-map RM-OSPF-DL in
Router#
```

An engineer is trying to block the route to 192.168.2.2 from the routing table by using the configuration that is shown. The route is still present in the routing table as an OSPF route. Which action blocks the route?

- A. Use an extended access list instead of a standard access list.
- B. Change sequence 10 in the route-map command from permit to deny.
- C. Use a prefix list instead of an access list in the route map.
- D. Add this statement to the route map: route-map RM-OSPF-DL deny 20.

**Answer: B**

#### NEW QUESTION 47

Which statement about MPLS LDP router ID is true?

- A. If not configured, the operational physical interface is chosen as the router ID even if a loopback is configured.
- B. The loopback with the highest IP address is selected as the router ID.
- C. The MPLS LDP router ID must match the IGP router ID.
- D. The force keyword changes the router ID to the specified address without causing any impact.

**Answer: B**

#### NEW QUESTION 52

Which statement about IPv6 ND inspection is true?

- A. It learns and secures bindings for stateless autoconfiguration addresses in Layer 3 neighbor tables.
- B. It learns and secures bindings for stateless autoconfiguration addresses in Layer 2 neighbor tables.
- C. It learns and secures bindings for stateful autoconfiguration addresses in Layer 3 neighbor tables.
- D. It learns and secures bindings for stateful autoconfiguration addresses in Layer 2 neighbor tables.

**Answer: B**

#### NEW QUESTION 57

Drag and drop the OSPF adjacency states from the left onto the correct descriptions on the right.

Init	Each router compares the DBD packets that were received from the other router.
2-way	Routers exchange information with other routers in the multiaccess network.
Down	The neighboring router requests the other routers to send missing entries.
Exchange	The network has already elected a DR and a backup BDR.
ExStart	The OSPF router ID of the receiving router was not contained in the hello message.
Loading	No hellos have been received from a neighbor router.

- A. Mastered  
 B. Not Mastered

**Answer:** A

**Explanation:**

Init	Exchange
2-way	2-way
Down	Loading
Exchange	ExStart
ExStart	Init
Loading	Down

**NEW QUESTION 58**

.....

## THANKS FOR TRYING THE DEMO OF OUR PRODUCT

Visit Our Site to Purchase the Full Set of Actual 300-410 Exam Questions With Answers.

We Also Provide Practice Exam Software That Simulates Real Exam Environment And Has Many Self-Assessment Features. Order the 300-410 Product From:

<https://www.2passeasy.com/dumps/300-410/>

## Money Back Guarantee

### 300-410 Practice Exam Features:

- \* 300-410 Questions and Answers Updated Frequently
- \* 300-410 Practice Questions Verified by Expert Senior Certified Staff
- \* 300-410 Most Realistic Questions that Guarantee you a Pass on Your FirstTry
- \* 300-410 Practice Test Questions in Multiple Choice Formats and Updatesfor 1 Year