

Cisco

Exam Questions 200-901

Developing Applications and Automating Workflows using Cisco Core Platforms (DEVASC)



NEW QUESTION 1

What are two advantages of version control software? (Choose two.)

- A. It supports tracking and comparison of changes in binary formate files.
- B. It allows old versions of packaged applications to be hosted on the Internet
- C. It provides wiki collaboration software for documentation.
- D. It supports comparisons between revisions of source code files.
- E. It allows new team members to access the current code and history.

Answer: DE

NEW QUESTION 2

In python, which expression checks whether the script returns a success status code when the Requests library is used?

- A. `response.status_code== requests.ok`
- B. `respons.status_code== requests.codes.ok`
- C. `response.code== requests.codes.ok`
- D. `response.status_code ! == requests.codes.ok`

Answer: B

NEW QUESTION 3

Which product provides network controller-level management features?

- A. Cisco DNA Center
- B. Cisco NX-OS
- C. Cisco UCS Manager
- D. Cisco ISE

Answer: A

NEW QUESTION 4

Which statement about authentication a RESTCONF API session with a router that runs Cisco IOS XE software is true?

- A. OAuth must be used.
- B. A token must be retrieved and the associated string must be embedded in the X-Auth-Token header.
- C. Basic authentication must be used.
- D. No authentication is required.

Answer: C

NEW QUESTION 5

When a Cisco IOS XE networking device is configured using RESTCONF, what is the default data-encoding method?

- A. XML
- B. x-form-encoding
- C. YANG
- D. YAML

Answer: A

NEW QUESTION 6

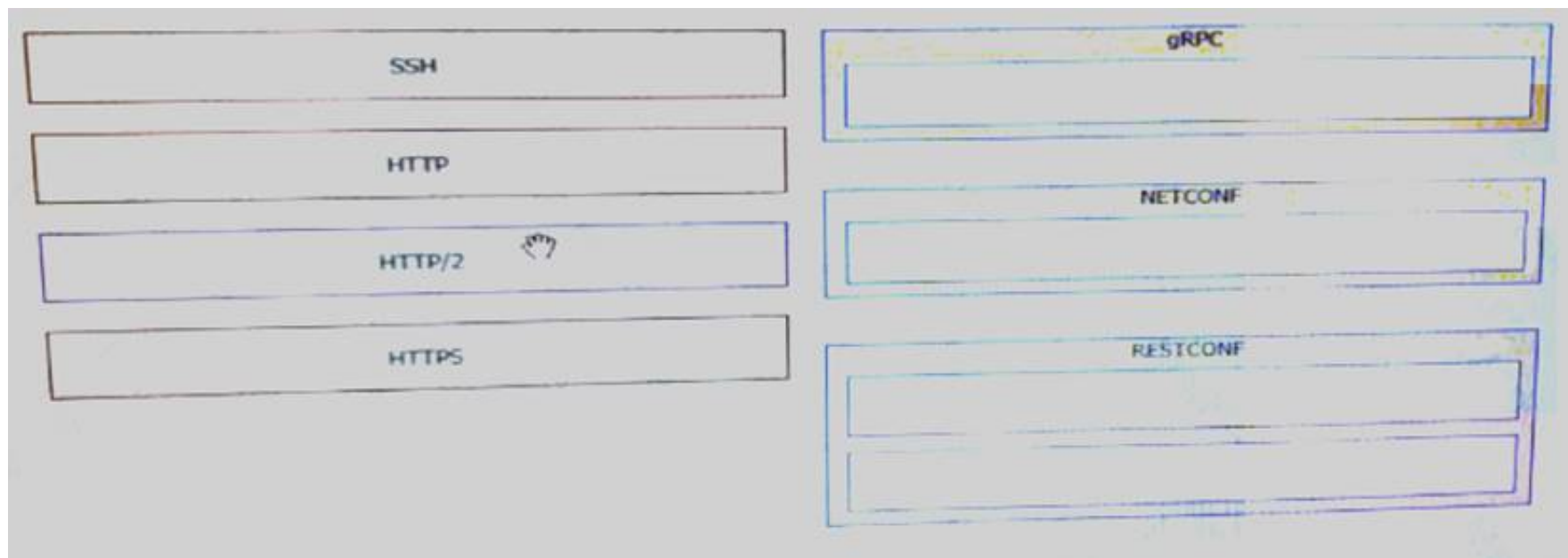
A developer is writing an application that a REST API and the application requires a valid from the API which element of the response is used in the conditional check?

- A. URL
- B. Status code
- C. Link
- D. Body
- E. Headers

Answer: B

NEW QUESTION 7

Drag and drop the network automation interfaces from the left onto the transport protocols that they support on the right.



- A. Mastered
- B. Not Mastered

Answer: A

Explanation:

gRPC = C, NETCONF = A, RESTCONF = B, D

NEW QUESTION 8

When using the Bash shell, how is the output of the devnet command saved to a file named "output.txt"?

- A. devnet & output.txt
- B. devnet > output.txt
- C. devnet < output.txt
- D. devnet | output.txt

Answer: B

NEW QUESTION 9

Which CI/CD tool is an automation tool used to build, test, and deploy software?

- A. Nagios
- B. Gradle
- C. Jenkins
- D. Git

Answer: C

NEW QUESTION 10

An automation script fails to connect to an internal server exactly 1 out of 2 times it is executed. This behavior is seen from different clients. Which networking device must be at fault?

- A. Laptop on which the script is running
- B. Router
- C. Switch
- D. Load balancer

Answer: D

NEW QUESTION 10

Which status code is used by a REST API to indicate that the submitted payload is incorrect?

- A. 400
- B. 403
- C. 405
- D. 429

Answer: A

NEW QUESTION 12

Which two types of NAT are used in a network? (Choose two.)

- A. Static NAT
- B. Normal NAT
- C. Multicast NAT
- D. Dynamic NAT
- E. Router NAT

Answer: AD

NEW QUESTION 15
Refer to the exhibit.

List Rooms

List rooms.

The `title` of the room for 1:1 rooms will be the display name of the other person.

By default, lists rooms to which the authenticated user belongs.

Long result sets will be split into **pages**.

GET `/v1/rooms`

Query Parameters

Name	Description
<code>teamId</code> string	List rooms associated with a team, by ID.
<code>type</code> string	List rooms by tape. <i>Possible values: direct, group</i>
<code>sortBy</code> string	Sort results. <i>Possible values: id, lastactivity, created</i>
<code>max</code> number	Limit the maximum number of rooms in the response. Default: <code>100</code>

Given the API documentation for the UCS SDK python class, UcsHandle, which code snippet creates a handle instance?

HTTP GET `/v1/rooms` []

- A. Option A
- B. Option B
- C. Option C
- D. Option D

Answer: B

NEW QUESTION 16

What should a CI/CD pipeline aim to achieve?

- A. to allow manual testing before deployment
- B. to require minimal manual interaction
- C. to support new deployments on a fixed monthly schedule
- D. to provide a documented process for feedback

Answer: A

NEW QUESTION 18

On which port does NETCONF operate by default?

- A. 23
- B. 443
- C. 822
- D. 830

Answer: D

NEW QUESTION 23

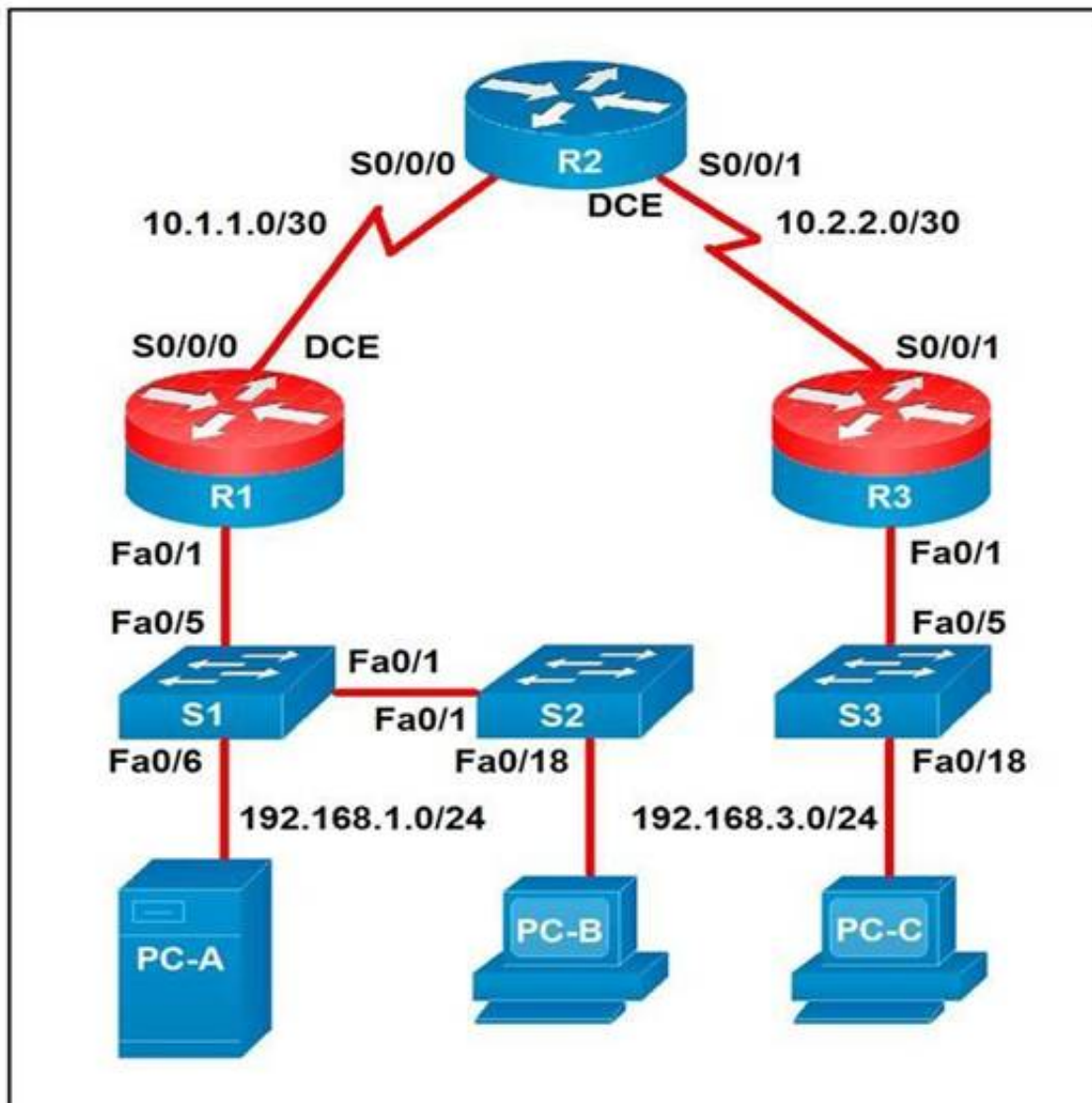
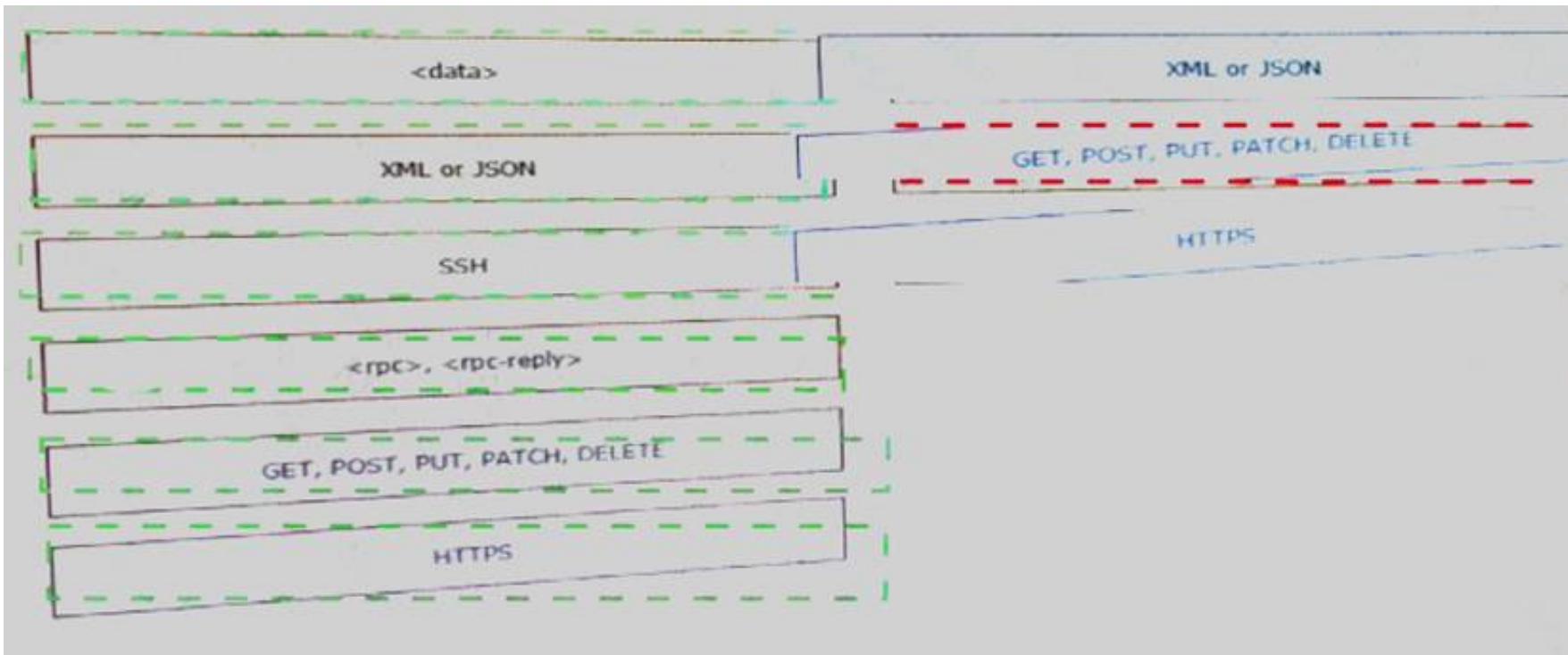
What are two characteristics of Bare Metal environments that are related to application deployment? (Choose two.)

- A. Provide the hypervisor to host virtual servers
- B. Specifically designed for container-based workloads.
- C. Provides workloads with access to hardware features
- D. Suitable for legacy application that do not support virtualization
- E. Not compatible with other cloud services such as PaaS or SaaS offerings.

Answer: CD

NEW QUESTION 26

Refer to the exhibit.



A developer is troubleshooting an API with the given API with the given API documentation and cURL command. What is the cause of this problem?

- A. The user is not allowed to post messages from their account
- B. The request body is missing or incomplete
- C. The API token specified is expired
- D. The authorization header is missing or incomplete

Answer: C

NEW QUESTION 30

Drag and drop elements of the RESTCONF protocol stack from the left onto the correct description on the right. Not all elements on the left are used.


```
List the networks in a Meraki organization:

GET https://api.meraki.com/api/v0/organizations/<org_id>/networks
Response code: 200
Response body: [ {
  "id": <network_id>,
  "name": "Test Network",
  "organization_id": <new_org_id>,
  "type": "wireless",
  "timeZone": "America/Los_Angeles",
  "tags": " test "
}]
```

- A. Mastered
- B. Not Mastered

Answer: A

Explanation:

1 – B, 2 – E, 3 - F

NEW QUESTION 34

Which task is performed because the test-driven development approach is being used?

- A. testing existing software before developing new code
- B. refactoring code that is covered by existing tests
- C. writing code without committing any coding violations
- D. creating test scenarios based on continuous development

Answer: B

NEW QUESTION 39

What is the purpose of a MAC address?

- A. To uniquely identify a router in a LAN
- B. To uniquely identify a network interface in a LAN
- C. To uniquely identify a device on the internet
- D. To uniquely identify a switch in a LAN

Answer: B

NEW QUESTION 40

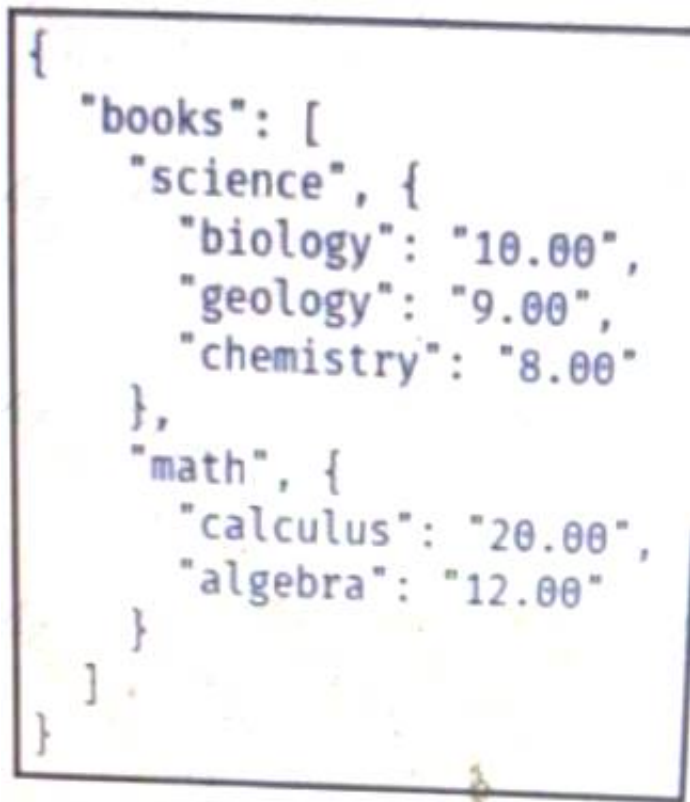
Which action does the Git command git merge allow the development to perform?

- A. Combine multiple sequence of commits into one unified history.
- B. Push changes to the remote repository
- C. Switch between branches
- D. Create, list, rename, and delete branches

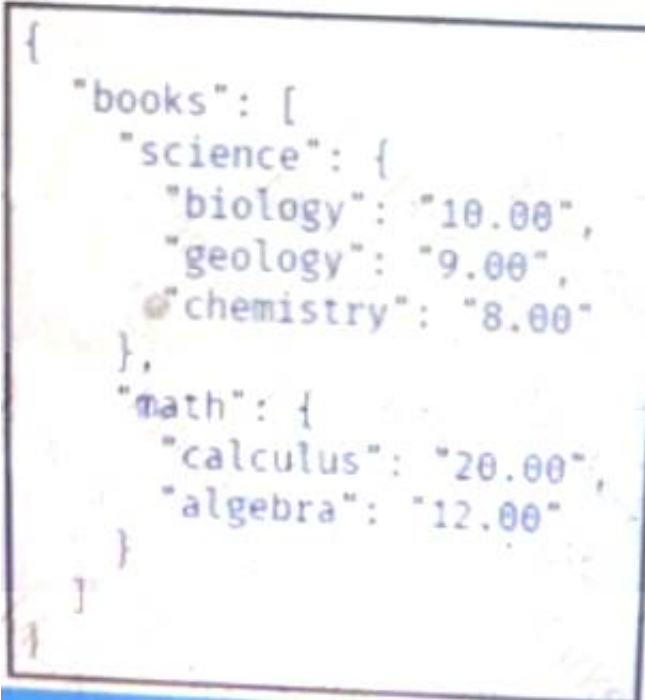
Answer: A

NEW QUESTION 43

Refer to the exhibit.



Drag and drop the variables from the left onto the item numbers on the right that match the missing assignments in the exhibit.



- A. Mastered
- B. Not Mastered

Answer: A

Explanation:
1 – A, 2 – C, 3 – B

NEW QUESTION 45

Drag and drop the HTTP status codes from the left onto the correct descriptions on the right.

GET /api/v1/flow-analysis/{flowAnalysisId}	POST /api/system/v1/auth/token
POST /api/v1/flow-analysis	GET /api/v1/network-device/ and choose IP of source and destination devices
POST /api/system/v1/auth/token	POST /api/v1/flow-analysis
GET /api/v1/network-device/ and choose IP of source and destination devices	GET /api/v1/flow-analysis/{flowAnalysisId}

- A. Mastered
- B. Not Mastered

Answer: A

Explanation:
1 – B, 2 – D, 3 – A, 4 – C

NEW QUESTION 50

Which detail is included in a routing table?

- A. IP protocol
- B. Broadcast address
- C. TCP or UDP port number
- D. Destination next hop or outgoing interface

Answer: D

NEW QUESTION 53

On which network plane is routing protocol traffic handled?

- A. data plane
- B. management plane
- C. authentication plane
- D. control plane

Answer: D

NEW QUESTION 58

What is the benefit of edge computing?

- A. It reduces network latency by moving processing closer to the data source.
- B. It simplifies security as devices and processing are brought closer together
- C. It removes the need for centralized data processing.
- D. It reduces data velocity from devices or other data sources.

Answer: A

NEW QUESTION 60

Fill in the blanks to complete the statement.

Given a username of “devnet” And a password “Cisco123”, applications must create a base64 encoding of the string “_____” when sending HTTP requests to an API that uses _____ authentication.

Cisco DNA Center provides the capability to send an HTTP GET request to the API endpoint `https://DNA-C-API-ADDRESS/api/v1/network-device/` and receive the network device list in JSON format.

- A. Mastered
- B. Not Mastered

Answer: A

Explanation:

```
docker run -p 3000:5000 f877cbf2ff33
```

NEW QUESTION 62

Which two concepts describe test-driven development? (Choose two.)

- A. It enables code refactoring.
- B. Write a test before writing code.
- C. Implementation is driven by incremental testing of release candidates.
- D. User acceptance testers development the test requirements.
- E. Tests are created when code is ready for release.

Answer: BC

NEW QUESTION 66

What is the Git command to delete a local branch named “experiment” without a warning?

- A. git branch -n experiment
- B. git branch -rm experiment
- C. git branch -f experiment
- D. git branch -D experiment

Answer: D

NEW QUESTION 71

Package updates from a local server fail to download. However, the same updates work when a much slower external repository is used. Why are local updates failing?

- A. The update utility is trying to use a proxy to access the internal resource.
- B. The Internet connection is too slow.
- C. The Internet is down at the moment, which causes the local server to not be able to respond.
- D. The server is running out of disk space.

Answer: A

NEW QUESTION 75

.....

Thank You for Trying Our Product

We offer two products:

1st - We have Practice Tests Software with Actual Exam Questions

2nd - Questions and Answers in PDF Format

200-901 Practice Exam Features:

- * 200-901 Questions and Answers Updated Frequently
- * 200-901 Practice Questions Verified by Expert Senior Certified Staff
- * 200-901 Most Realistic Questions that Guarantee you a Pass on Your First Try
- * 200-901 Practice Test Questions in Multiple Choice Formats and Updates for 1 Year

100% Actual & Verified — Instant Download, Please Click
[Order The 200-901 Practice Test Here](#)