

## Exam Questions 400-007

Cisco Certified Design Expert (CCDE v3.0) Written Exam

<https://www.2passeasy.com/dumps/400-007/>



#### NEW QUESTION 1

An architect receives a functional requirement for a NAC system from a customer security policy stating that if a corporate Wi-Fi device does not meet current AV definitions, then it cannot access the corporate network until the definitions are updated. Which component should be built into the NAC design?

- A. posture assessment with remediation VLAN
- B. quarantine SGTs
- C. dACLs with SGTs
- D. quarantine VLAN

**Answer:** A

#### NEW QUESTION 2

SDWAN networks capitalize the usage of broadband Internet links over traditional MPLS links to offer more cost benefits to enterprise customers. However, due to the insecure nature of the public Internet, it is mandatory to use encryption of traffic between any two SDWAN edge devices installed behind NAT gateways. Which overlay method can provide optimal transport over unreliable underlay networks that are behind NAT gateways?

- A. TLS
- B. DTLS
- C. IPsec
- D. GRE

**Answer:** C

#### NEW QUESTION 3

A network attacker exploits application flaws to compromise critical systems in the organization with these objectives:

- Obtain sensitive data and export the data out of the network.
- Compromise developer and administrator credentials to potentially

What is the next step after application discovery is completed in Zero Trust networkings

- A. Establish visibility and behavior modeling
- B. Enforce policies and microsegmentation.
- C. Assess real-time security health.
- D. Ensure trustworthiness of systems.

**Answer:** B

#### Explanation:

<https://www.cisco.com/c/en/us/solutions/collateral/enterprise/design-zone-security/zt-arch-guide.html>

#### NEW QUESTION 4

What are two top cloud-native security challenges faced by today's cloud-oriented organizations? (Choose two)

- A. establishing user roles
- B. polymorphism
- C. lack of visibility and tracking
- D. increased attack surface
- E. user credential validation

**Answer:** CD

#### NEW QUESTION 5

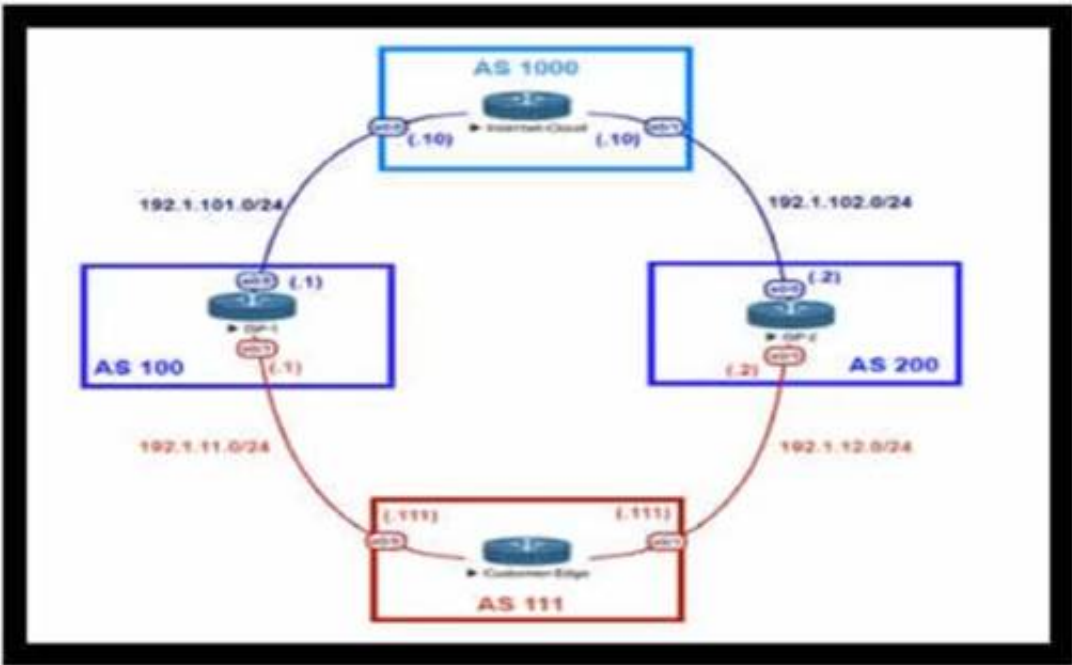
You are designing a network running both IPv4 and IPv6 to deploy QoS Which consideration is correct about the QoS for IPv4 and IPv6?

- A. IPv4 and IPv6 traffic types can use use queuing mechanisms such as LLQ, PQ and CQ.
- B. IPv6 packet classification is only available with process switching, whereas IPv4 packet classification is available with both process switching and CEF.
- C. IPv6 and IB/4 traffic types can use a single QoS policy to match both protocols
- D. Different congestion management mechanisms need to be used for IPv4 and IPv6 traffic types

**Answer:** C

#### NEW QUESTION 6

Refer to the exhibit.



An engineer is designing the traffic flow for AS 111. Traffic from AS 111 should be preferred via AS 100 for all external routes. A method must be used that only affects AS 111. Which BGP attributes are best suited to control outbound traffic?

- A. community
- B. MED
- C. local preference
- D. As path

Answer: C

NEW QUESTION 7

Refer to the table.

CONNECTIVITY	CAPEX	OPEX ANNUAL	INSTALLATION FEE	TERM
DWDM over dark fiber	\$250,000	\$100,000	\$30,000	12 months
CWDM over dark fiber	\$150,000	\$100,000	\$25,000	18 months
MPLS wires only	\$50,000	\$80,000	\$5,000	24 months
Metro Ethernet	\$45,000	\$100,000	\$5,000	36 months

A customer investigates connectivity options for a DCI between two production data centers to aid a large-scale migration project. The solution must provide a single 10G connection between locations and be able to run its own varying QoS profiles without service provider interaction based on the migration stages. All connectivity methods are at 10 Gbps. Which transport technology costs the least if the connectivity is required for just one year?

- A. MPLS wires only
- B. CWDM over dark fiber
- C. DWDM over dark fiber
- D. Metro Ethernet

Answer: A

NEW QUESTION 8

A Service Provider is designing a solution for a managed CE service to a number of local customers using a single CE platform and wants to have logical separation on the CE platform using Virtual Routing and Forwarding (VRF) based on IP address ranges or packet length. Which is the most scalable solution to provide this type of VRF Selection process on the CE edge device?

- A. Static Routes for Route Leaking
- B. Policy Based Routing
- C. OSPF per VRF Instance
- D. Multi-Protocol BGP

Answer: B

NEW QUESTION 9

What statement describes the application layer as defined in the software-defined networking architecture?

- A. This layer is responsible for collecting the network status such as network usage and topology.
- B. This layer contains programs that communicate their desired network behavior to controllers.
- C. This layer is responsible for handling packets based on the rules provided by the controller.
- D. This layer processes the instructions and requirements sent by networking components.

Answer: B

NEW QUESTION 10

Which two statements describe the hierarchical LAN design model? (Choose two)

- A. It is a well-understood architecture that provides scalability
- B. It is the best design for modern data centers
- C. It is the most optimal design but is highly complex
- D. It provides a simplified design
- E. Changes, upgrades, and new services can be introduced in a controlled and staged manner

**Answer:** AE

#### NEW QUESTION 10

Which purpose of a dynamically created tunnel interface on the design of IPv6 multicast services is true?

- A. first-hop router registration to the RP
- B. multicast client registration to the RP
- C. multicast source registration to the RP
- D. transport of all IPv6 multicast traffic

**Answer:** D

#### NEW QUESTION 14

Which two actions must be taken when assessing an existing wireless network implementation for its readiness to support voice traffic? (Choose two.)

- A. Check for high roaming delay.
- B. Check for uniform radio coverage across the floors.
- C. Check for high channel utilization.
- D. Check for latency over wireless.
- E. Identify frequent TX power changes.

**Answer:** AC

#### Explanation:

<https://community.cisco.com/t5/wireless/channel-utilization/td-p/2716667>

#### NEW QUESTION 15

Company XYZ is in the process of identifying which transport mechanism(s) to use as their WAN technology. Their main two requirements are.

- a technology that could offer DPI, SLA, secure tunnels, privacy, QoS, scalability, reliability, and ease of management
- a technology that is cost-effective

Which WAN technology(ies) should be included in the design of company XYZ?

- A. Software-defined WAN should be the preferred choice because it complements both technologies, covers all the required features, and it is the most cost-effective solution.
- B. Internet should be the preferred option because it is cost effective and supports BFD, IP SL
- C. and IPsec for secure transport over the public Internet.
- D. Both technologies should be use
- E. Each should be used to back up the other one; where the primary links are MPLS, the internet should be used as a backup link with IPsec (and vice versa).
- F. MPLS meets all these requirements and it is more reliable than using the Internet
- G. It is widely used with defined best practices and an industry standard.

**Answer:** A

#### NEW QUESTION 17

During evaluation of migrating current on premises infrastructure to add cloud-based infrastructure, a network planning team must meet three core requirements as they make recommendations on which cloud strategy to adopt going forward

- Technology is changing rapidly, therefore the enterprise must be open to adopting new ways of doing things, and be ready to invest CapEx-funds in the next three years
- Network bandwidth capacity requirements are dynamic and are expected to change over the next year
- If new technologies are to be introduced, operational expenses must be kept at a minimum. Which cloud strategy meets these requirements?

- A. private
- B. hybrid
- C. public
- D. multicloud

**Answer:** D

#### NEW QUESTION 18

SDN emerged as a technology trend that attracted many industries to move from traditional networks to SDN. Which challenge is solved by SDN for cloud service providers?

- A. need for intelligent traffic monitoring
- B. exponential growth of resource-intensive application
- C. complex and distributed management flow
- D. higher operating expense and capital expenditure

**Answer:** B

#### NEW QUESTION 22

Which extensions to GRE tunneling provide session tracking and in-order packet delivery in exchange for additional state stored in tunnel endpoints?

- A. GRE Protocol Type and Checksum extension fields.
- B. GRE Version and Reserved0 extension fields.
- C. No extension fields are available in the GRE header to track session data and packet sequences.
- D. GRE Key and Sequence number extensions.

**Answer:** D

#### NEW QUESTION 25

Company XYZ asks for design recommendations for Layer 2 redundancy. The company wants to prioritize fast convergence and resiliency elements. In the design. Which two technologies are recommended? (Choose two.)

- A. Design MLAG/MC-LAG into the network wherever possible.
- B. Configure DHCP snooping on the switches.
- C. Use root guard.
- D. Use BPDU guard.
- E. Use UniDirectional Link Detection.

**Answer:** AE

#### NEW QUESTION 30

Drag and drop the multicast protocols from the left onto the current design situation on the right.

PIM-SM, SSM, BIDIR	IPv4 Group Management
PIM-DM, PIM-SM, SSM, BIDIR	IPv4 Forwarding
IGMP	IPv4 Interdomain Source Discovery
MSDP	IPv6 Group Management
MLD	IPv6 Forwarding

- A. Mastered
- B. Not Mastered

**Answer:** A

#### Explanation:

A picture containing table Description automatically generated

IPv4:

Host Registration - IGMP

Router Registration - PIM-DM, PIM-SM, SSM, BIDIR Inter-Domain Source Discovery - MSDP

IPv6:

Host Registration - MLD

Router Registration - PIM-SM, SSM, BIDIR

#### NEW QUESTION 31

A company uses equipment from multiple vendors in a data center fabric to deliver SDN, enable maximum flexibility, and provide the best return on investment. Which YANG data model should be adopted for comprehensive features to simplify and streamline automation for the SDN fabric?

- A. proprietary
- B. OpenConfig
- C. native
- D. IETF

**Answer:** B

#### NEW QUESTION 35

An architect designs a multi-controller network architecture with these requirements:

- Achieve fast failover to control traffic when controllers fail.
- Reduce connectivity loss and enable smart recovery to improve the SDN survivability.
- Improve connectivity by adding path diversity and capacity awareness for controllers.

Which control plane component of the multi-controller must be built to meet the requirements?

- A. control node reliability
- B. controller stale consistency
- C. control path reliability
- D. controller clustering

**Answer:** B



### NEW QUESTION 36

Which actions are performed at the distribution layer of the three-layer hierarchical network design model? (Choose two)

- A. Fast transport
- B. Reliability
- C. QoS classification and marking boundary
- D. Fault isolation
- E. Redundancy and load balancing

**Answer:** DE

### NEW QUESTION 38

Hybrid cloud computing allows organizations to like advantage of public and private cloud models Which best practice should organizations follow to ensure data security in the private cloud?

- A. Use standard protocols for data transmission over the network.
- B. Encrypt data when it is at rest and in motion
- C. Communicate all data security risks to customers and end users.
- D. Use standard network protocols for data communication between unsecured network connections.

**Answer:** B

### NEW QUESTION 41

Drag and drop the design characteristics from the left onto the correct network filter techniques on the right. Not all options are used.

It is used to prevent spoofing attacks when there are alternate routes to a given IP address	Ingress Access Lists target 1
It is used to check the existence of a route without regard to the incoming interface	Strict Reverse Path Forwarding target 2
It is a dynamic filter	Feasible Path Reverse Path Forwarding target 3
It requires manual configuration	Loose Reverse Path Forwarding target 4
It is used as a filtering technique for Martian IP addresses	

- A. Mastered
- B. Not Mastered

**Answer:** A

### Explanation:

It is used to prevent spoofing attacks when there are alternate routes to a given IP address	Ingress Access Lists It requires manual configuration
It is used to check the existence of a route without regard to the incoming interface	Strict Reverse Path Forwarding It is a dynamic filter
It is a dynamic filter	Feasible Path Reverse Path Forwarding It is used to prevent spoofing attacks when there are alternate routes to a given IP address
It requires manual configuration	Loose Reverse Path Forwarding It is used as a filtering technique for Martian IP addresses
It is used as a filtering technique for Martian IP addresses	

### NEW QUESTION 46

Which feature must be part of the network design to wait a predetermined amount of time before notifying the routing protocol of a change in the path in the network?

- A. Transmit delay
- B. Throttle timer
- C. SPF hold time
- D. Interface dampening

**Answer:** B

#### NEW QUESTION 47

Company XYZ has designed their network to run GRE over IPsec on their Internet-based VPN to connect two sites. Which IPsec tunneling feature can they enable to optimize the data flow while ensuring that the headers contain no duplicate IP addresses?

- A. Transport Mode in IPsec Phase I
- B. Transport Mode in IPsec Phase II
- C. Tunnel Mode in IPsec Phase II
- D. Tunnel Mode in IPsec Phase I

**Answer:** B

#### NEW QUESTION 50

Company XYZ wants to redesign the Layer 2 part of their network and wants to use all available uplinks for increased performance. They also want to have end host reachability supporting conversational learning. However, due to design constraints, they cannot implement port-channel on the uplinks. Which other technique can be used to make sure the uplinks are in active/active state?

- A. TRILL
- B. LISP
- C. MSTP
- D. switch stack

**Answer:** B

#### NEW QUESTION 53

In the case of outsourced IT services, the RTO is defined within the SLA. Which two support terms are often included in the SLA by IT and other service providers? (Choose two.)

- A. network size and cost
- B. support availability
- C. network sustainability
- D. network reliability
- E. resolution time

**Answer:** BE

#### NEW QUESTION 57

Which two impacts of adding the IP event dampening feature to a network design are true? (Choose two.)

- A. It protects against routing loops.
- B. It switches traffic immediately after a link failure.
- C. It speeds up link failure detection.
- D. It reduces the utilization of system processing resources.
- E. It improves overall network stability.

**Answer:** DE

#### NEW QUESTION 59

An architect receives a business requirement from a CTO that states the RTO and RPO for a new system should be as close as possible to zero. Which replication method and data center technology should be used?

- A. asynchronous replication over dual data centers via DWDM
- B. synchronous replication over geographically dispersed dual data centers via MPLS
- C. synchronous replication over dual data centers via Metro Ethernet
- D. asynchronous replication over geographically dispersed dual data centers via CWDM

**Answer:** B

#### Explanation:

RTO and RPO are measures of how quickly and accurately a system can be recovered after a disaster or failure. RTO refers to the amount of time it takes to restore a system to its normal operation after a failure, while RPO refers to the amount of data that can be lost as a result of a failure. In synchronous replication, data is written to both the primary and secondary systems at the same time. This ensures that the data on the secondary system is always up-to-date and ready for use in the event of a disaster or failure. Geographically dispersed dual data centers refer to two data centers that are located in different geographical locations, which can help to reduce the risk of a disaster or failure impacting both data centers at the same time.

#### NEW QUESTION 60

Which service abstracts away the management of the operating system, middleware, and runtime?

- A. IaaS
- B. PaaS
- C. SaaS
- D. BMaaS

**Answer:** B

**Explanation:**

IaaS, PaaS, and SaaS each offer a progressive layer of abstraction after that. IaaS abstracts away the physical compute, network, storage, and the technology needed to virtualize those resources. PaaS goes a step further and abstracts away the management of the operating system, middleware, and runtime.  
<https://www.ibm.com/topics/iaas#:~:text=IaaS%20abstracts%20away%20the%20physical,system%2C%20mid>

**NEW QUESTION 61**

Refer to the table.

CONNECTIVITY	CAPEX	OPEX ANNUAL	INSTALLATION FEE	TERM
DWDM over dark fiber	\$250,000	\$100,000	\$30,000	60 months
CWDM over dark fiber	\$150,000	\$100,000	\$25,000	60 months
MPLS	\$50,000	\$150,000	\$75,000	12 months
Metro Ethernet	\$45,000	\$125,000	\$5,000	36 months

A customer investigates connectivity options for a DCI between two production data centers. The solution must provide dual 10G connections between locations with no single points of failure for Day 1 operations. It must also include an option to scale for up to 20 resilient connections in the second year to accommodate isolated SAN over IP and isolated, dedicated replication IP circuits. All connectivity methods are duplex 10 Gbps. Which transport technology costs the least over two years, in the scenario?

- A. Metro Ethernet
- B. DWDM
- C. CWDM
- D. MPLS

**Answer:** B

**NEW QUESTION 66**

You have been asked to design a high-density wireless network for a university campus. Which two principles would you apply in order to maximize the wireless network capacity? (Choose two.)

- A. Implement a four-channel design on 2.4 GHz to increase the number of available channels
- B. Choose a high minimum data rate to reduce the duty cycle.
- C. increases the number of SSIDs to load-balance the client traffic.
- D. Make use of the 5-GHz band to reduce the spectrum utilization on 2.4 GHz when dual-band clients are used.
- E. Enable 802.11n channel bonding on both 2.4 GHz and 5 GHz to increase the maximum aggregated cell throughput.

**Answer:** BD

**NEW QUESTION 70**

A small organization of 20 employees is looking to deliver a network design service for modernizing customer networks to support advanced solutions.

- > Project scope and weekly progress should be visualized by the management.
- > Always consider feedback and make changes accordingly during the project.
- > Should consider flexibility to change scope at the point of time.

Which project methodology meets the requirements and have the least impact on the outcome?

- A. Scrum
- B. LEAN
- C. Kanban
- D. Six-Sigma

**Answer:** A

**Explanation:**

<https://firebrand.training/uk/blog/scrum-vs-six-sigma-which-one-is-right-for-you>

**NEW QUESTION 75**

Company ABC uses IPv4-only. Recently they started deploying new endpoint devices. For operational reasons, IPv6 cannot be disabled on these new endpoint devices. Which security measure prevents the new endpoint from learning an IPv6 prefix from an attacker?

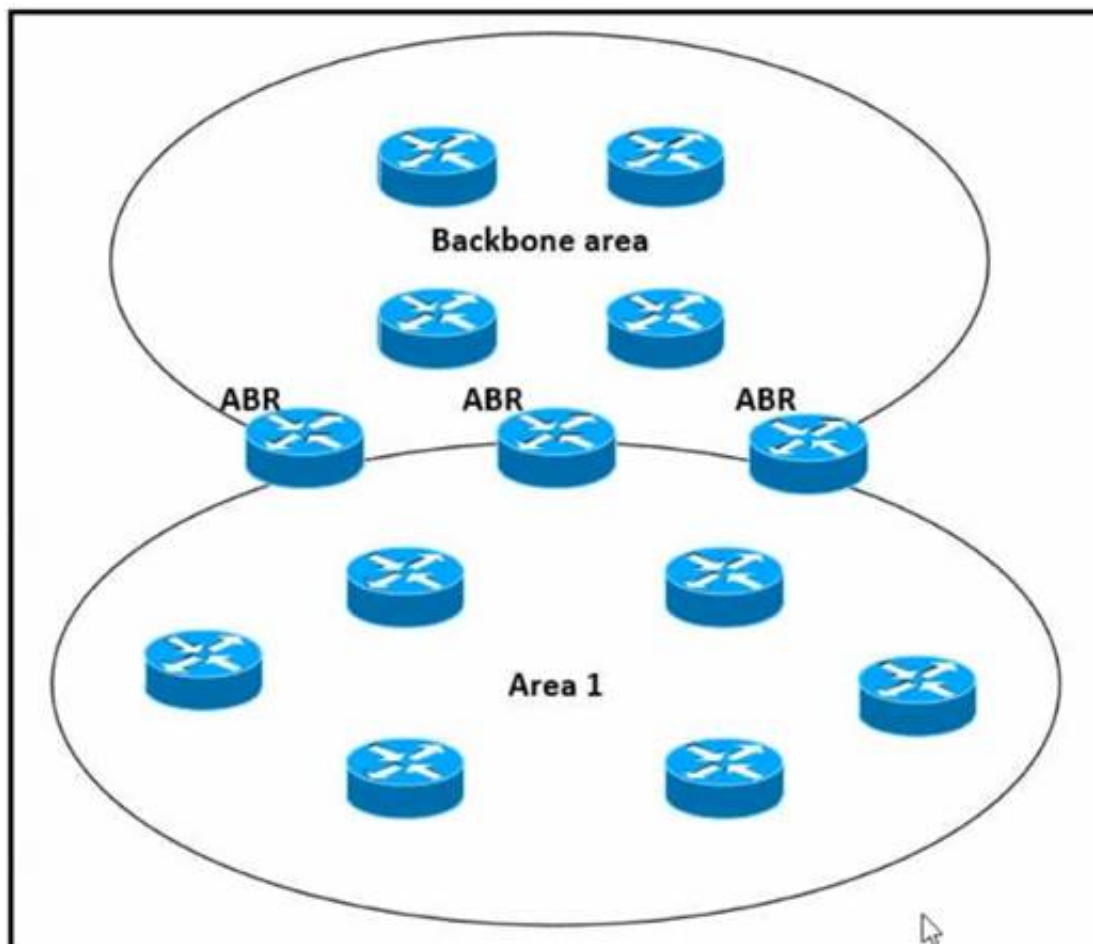
- A. Source Guard and Prefix Guard
- B. Router Advertisement Guard
- C. Prefix Guard
- D. Secure Neighbor Discovery

**Answer:** B

**NEW QUESTION 78**

Refer to the exhibit.





Which impact of using three or more ABRs between the backbone area and area 1 is true?

- A. In a large-scale network LSA replication by all ABRs can cause serious scalability issues
- B. Multiple ABRs reduce the CPU processing on each ABR due to splitting prefix advertisement
- C. In a large-scale network multiple ABRs can create microloops.
- D. Prefixes from the non-backbone area are advertised by one ABR to the backbone

Answer: A

#### NEW QUESTION 79

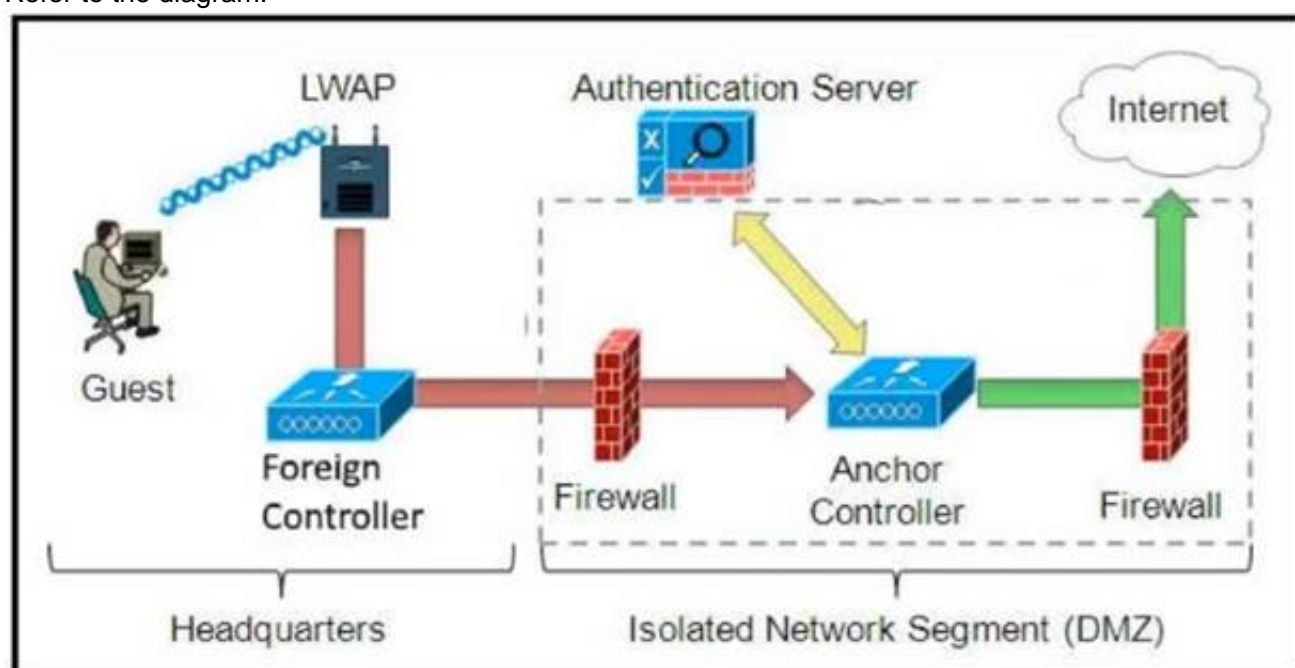
While reviewing an existing network design, you are discussing the characteristics of different STP versions. Which protocol minimizes unicast flooding during a Topology Change Notification in a Layer 2 switched network with many VLANs?

- A. PVRSTP
- B. MST
- C. STP
- D. PVSTP+

Answer: A

#### NEW QUESTION 81

Refer to the diagram.



Which solution must be used to send traffic from the foreign wireless LAN controller to the anchor wireless LAN controller?

- A. Send packets from the foreign controller to the anchor controller via Layer 3 MPLS VPN or VRF-Lite
- B. Send packets without encapsulation to the anchor controller over the routed network.
- C. Encapsulate packets into an EoIP tunnel and send them to the anchor controller.
- D. Send packets from the foreign controller to the anchor controller via IPinIP or IPsec tunnel.

Answer: C

#### NEW QUESTION 82

Which two statements explain the operation of BFD asynchronous mode? (Choose two )

- A. BFD asynchronous mode with echo packets combines the control packets and echo packets into a single packet.
- B. BFD asynchronous mode without echo packets uses control packets, and BFD asynchronous mode with echo packets does not.
- C. BFD asynchronous mode with and without echo packets use control packets.
- D. BFD asynchronous without echo packets has control packets sent back to the originating router, which echoes the control packet to detect failures.
- E. BFD asynchronous mode with echo packets uses separate control packets and echo packets.

**Answer:** CE

#### NEW QUESTION 83

Company XYZ wants to use the FCAPS ISO standard for network management design. The focus of the design should be to monitor and keep track of any performance issues by continuously collecting and analyzing statistical information to monitor, correct, and optimize any reduced responsiveness across the network. Which layer accomplishes this design requirement?

- A. fault management
- B. accounting management
- C. performance management
- D. security management

**Answer:** C

#### NEW QUESTION 85

A European national bank considers migrating its on-premises systems to a private cloud offering in a non-European location to significantly reduce IT costs. What is a primary factor prior to migration?

- A. data governance
- B. additional latency
- C. security
- D. cloud connectivity

**Answer:** A

#### NEW QUESTION 90

What is an architectural framework created by ETSI that defines standards to decouple network functions from proprietary hardware-based appliances and have them run in software on standard x86 servers?

- A. NFVIS
- B. NFV
- C. VNF

**Answer:** C

#### NEW QUESTION 92

In search of a system capable of hosting, monitoring compiling. and testing code in an automated way, what can be recommended to the organization?

- A. Jenkins
- B. Ansible
- C. Perl
- D. Chef

**Answer:** A

#### NEW QUESTION 93

What is a web-based model in which a third-party provider hosts applications that are available to customers over the Internet?

- A. PaaS
- B. SaaS
- C. IaaS
- D. WaaS

**Answer:** B

#### NEW QUESTION 97

An engineer is designing a DMVPN network where OSPF has been chosen as the routing protocol A spoke-to-spoke 'J'ita propagation model must be set up Which two design considerations must be taken into account? (Choose two )

- A. Configure all the sites as network type broadcast
- B. The network type on all sites should be point-to-multipoint
- C. The network type should be point-to-multipoint for the hub and point-to-point for the spokes.
- D. The hub should be set as the DR by specifying the priority to 255.
- E. The hub should be the DR by changing the priority of the spokes to 0.

**Answer:** AE

#### NEW QUESTION 100

The network designer needs to use GLOP IP addresses in order to make them unique within their ASN Which multicast address range should be used?

- A. 232.0.0.0 to 232 255.255.255
- B. H233.0.0 0 to 233.255.255 255
- C. 239000 to 239255255.255
- D. 224000 to 2240.0 255

Answer: B

#### NEW QUESTION 101

Which two statements describe the usage of the IS-IS overload bit technique? (Choose two )

- A. If overload-bit is set on a Level 2 intermediate system, the other Level 2 intermediate systems in the topology will stop using the overloaded IS to forward Level 2 traffic. However, the intermediate system can still forward Level 1 traffic.
- B. It can be set in intermediate systems (IS-IS routers) to prioritize control plane CSNP packets.
- C. It can be used to automatically synchronize the link-state database between Level 1 intermediate systems.
- D. It can be set in intermediate systems (IS-IS routers) to avoid traffic black holes until routing protocols are fully converged after a reload operation.
- E. It can be set in intermediate systems (IS-IS routers) to attract transit traffic from other intermediate systems.

Answer: AD

#### NEW QUESTION 103

Which undesired effect of increasing the jitter compensation buffer is true?

- A. The overall transport jitter decreases and quality improves.
- B. The overall transport jitter increases and quality issues can occur.
- C. The overall transport delay increases and quality issues can occur.
- D. The overall transport delay decreases and quality improves.

Answer: C

#### NEW QUESTION 108

An enterprise wants to migrate an on-premises network to a cloud network, and the design team is finalizing the overall migration process. Drag and drop the options from the left into the correct order on the right.

Identify the right applications and portfolio for cloud migration and cloud viability.	step 1
Maintain data integrity and operational continuity.	step 2
Adopt end-to-end approach and transition workloads to the cloud environment.	step 3
Develop cloud strategy and ensure alignment with business requirements.	step 4
Secure the cloud by setting up a secure cloud environment based on the workload requirements.	step 5
Monitor and manage cloud-based systems, including customer services.	step 6

- A. Mastered
- B. Not Mastered

Answer: A

#### Explanation:

Table Description automatically generated

#### NEW QUESTION 111

A business invests in SDN and develops its own SDN controller that, due to budget constraints, runs on a single controller. The controller actively places an exclusive lock on the configuration of the devices to ensure it is the only source of changes to the environment. What is the result if the controller fails?

- A. All device configurations are in read-only mode until the controller is restored.
- B. The control plane is unavailable until the controller is restored.
- C. If a device fails, the configuration backup is unavailable.
- D. Manual changes are only possible until the controller is restored.

Answer: B

#### NEW QUESTION 112

Which two actions ensure voice quality in a branch location with a low-speed, high-latency WAN connection? (Choose two.)

- A. Increase WAN bandwidth
- B. Increase memory branch switch.
- C. Fragment data packets.
- D. Replace any electrical links with optical links
- E. Prioritize voice packets

**Answer:** CE

#### NEW QUESTION 117

Company XYZ is running OSPF in their network. They have merged with another company that is running EIGRP as the routing protocol. Company XYZ now needs the two domains to talk to each other with redundancy, while maintaining a loop free environment. The solution must scale when new networks are added into the network in the near future. Which technology can be used to meet these requirements?

- A. multipoint route-redistribution with route filtering using ACLs
- B. DUMP multipoint route-redistribution with route filtering using route tags
- C. DUMPS single point route-redistribution with route filtering using route tags
- D. DUMPS single point route-redistribution with route filtering using ACLs

**Answer:** B

#### NEW QUESTION 120

Which two benefits can software defined networks provide to businesses? (Choose two.)

- A. provides additional redundancy
- B. decentralized management
- C. reduced latency
- D. enables innovation
- E. reduction of OpEx/CapEx
- F. meets high traffic demands

**Answer:** DE

#### NEW QUESTION 122

Which two application requirements are mandatory for traffic to receive proper treatment when placed in the priority queue? (Choose two.)

- A. small transactions (HTTP-like behavior)
- B. WRED drop treatment
- C. tolerance to packet loss
- D. intolerance to jitter
- E. TCP-based application

**Answer:** AD

#### NEW QUESTION 123

Which design solution reduces the amount of IGMP state in the network?

- A. IGMP filtering
- B. IGMPv3 with PIM-SSM
- C. multiple multicast domains
- D. one multicast group address thorough network regardless of IGMP version

**Answer:** A

#### NEW QUESTION 127

A customer migrates from a traditional Layer 2 data center network into a new SDN-based, spine-and-leaf VXLAN EVPN data center within the same location. The networks are joined to enable host migration at Layer 2 Which activity should be completed each time a legacy network is migrated?

- A. The migrated VLAN should be pruned from the Layer 2 interconnects.
- B. The migrated network should have a VXLAN VNID configured within the new network.
- C. The migrated network should be advertised to the EVPN network as a Type 2 network.
- D. The migrated network should be added to the EVPN BGP routing.

**Answer:** C

#### NEW QUESTION 131

What is a description of a control plane action?

- A. de-encapsulating and re-encapsulating a packet in a data-link frame
- B. matching the destination MAC address of an Ethernet frame to the MAC address table
- C. matching the destination IP address of an IP packet to the IP routing table
- D. hosts locating routers that reside on attached links using the IPv6 Neighbor Discover Protocol

**Answer:** D



### NEW QUESTION 133

A senior network designer suggests that you should improve network convergence times by reducing BGP timers between your CE router and the PE router of the service provider. Which two factors should you consider to adjust the timer values? (Choose two.)

- A. service provider agreement to support tuned timers
- B. manual updates to the peer groups
- C. service provider scheduling of changes to the PE
- D. number of routes on the CE router
- E. number of VRFs on the PE router

**Answer:** AD

### NEW QUESTION 137

Organizations that embrace Zero Trust initiatives ranging from business policies to technology infrastructure can reap business and security benefits. Which two domains should be covered under Zero Trust initiatives? (Choose two)

- A. workload
- B. work domain
- C. workplace
- D. workgroup
- E. workspace

**Answer:** AC

### NEW QUESTION 139

You are using iSCSI to transfer files between a 10 Gigabit Ethernet storage system and a 1 Gigabit Ethernet server. The performance is only approximately 700 Mbps and output drops are occurring on the server switch port. Which action will improve performance in a cost-effective manner?

- A. Change the protocol to CIFS.
- B. Increase the queue to at least 1 GB
- C. Use a WRED random drop policy
- D. Enable the TCP Nagle algorithm on the receiver

**Answer:** A

### NEW QUESTION 144

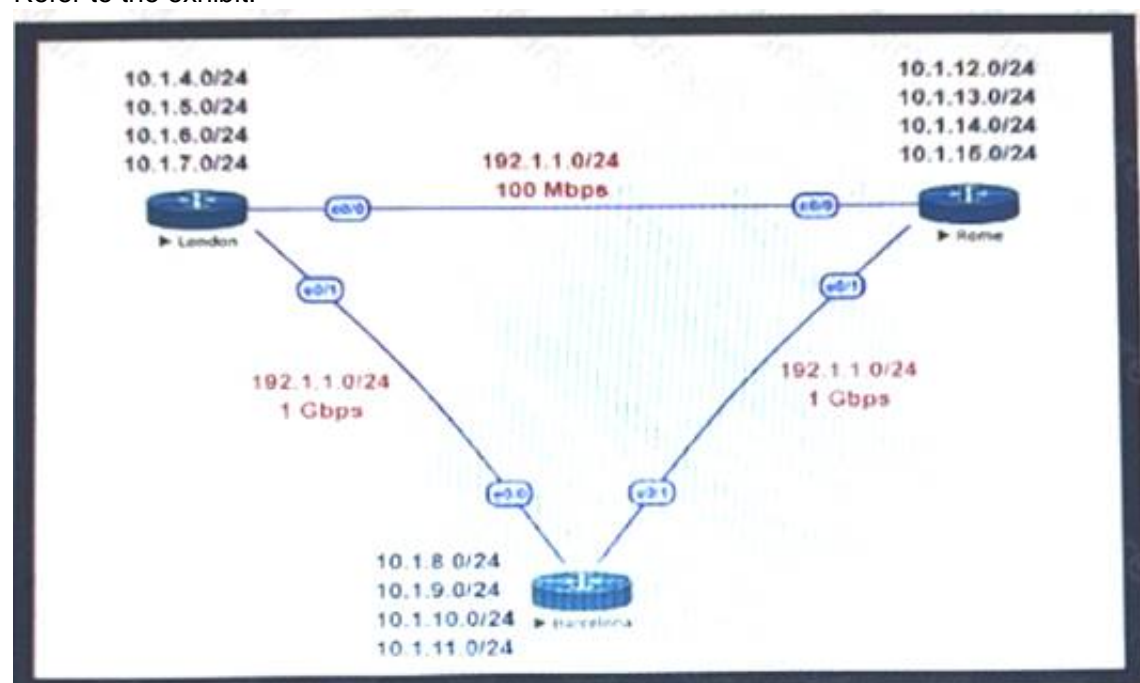
What are two key design principles when using a hierarchical core-distribution-access network model? (Choose two )

- A. A hierarchical network design model aids fault isolation
- B. The core layer is designed first, followed by the distribution layer and then the access layer
- C. The core layer provides server access in a small campus.
- D. A hierarchical network design facilitates changes
- E. The core layer controls access to resources for security

**Answer:** AD

### NEW QUESTION 145

Refer to the exhibit.



This network is running OSPF as the routing protocol. The internal networks are being advertised in OSPF. London and Rome are using the direct link to reach each other although the transfer rates are better via Barcelona. Which OSPF design change allows OSPF to calculate the proper costs?

- A. Change the OSPF reference bandwidth to accommodate faster links.
- B. Filter the routes on the link between London and Rome
- C. Change the interface bandwidth on all the links.
- D. Implement OSPF summarisation to fix the issue

**Answer:** A

#### NEW QUESTION 149

Company XYZ branch offices connect to the headquarter sites using two links, MPLS and Internet. The company wants to design the traffic flow so that voice traffic goes through the MPLS link and all other traffic uses either the MPLS link or the Internet link. Which technique can the company use in their design to ensure that the traffic is not process switched?

- A. policy-based routing
- B. virtual links
- C. visualization
- D. floating static route

**Answer:** A

#### NEW QUESTION 151

You are tasked to design a QoS policy for a service provider so they can include it in the design of their MPLS core network. If the design must support an MPLS network with six classes, and CEs will be managed by the service provider, which QoS policy should be recommended?

- A. map IP CoS bits into the IP Precedence field
- B. map flow-label bits into the Exp field
- C. map IP precedence bits into the DSCP field
- D. map DSCP bits into the Exp field

**Answer:** D

#### NEW QUESTION 153

Which design benefit of bridge assurance is true?

- A. It supposes a spanning-tree topology change upon connecting and disconnecting a station on a port
- B. It prevents switched traffic from traversing suboptimal paths on the network.
- C. It allows small, unmanaged switches to be plugged into ports of access switches without the risk of switch loops.
- D. It prevents switch loops caused by unidirectional point-to-point link condition on Rapid PVST+ and MST

**Answer:** D

#### NEW QUESTION 155

You want to mitigate failures that are caused by STP loops that occur before UDLD detects the failure or that are caused by a device that is no longer sending BPDUs. Which mechanism do you use along with UDLD?

- A. Root guard
- B. BPDU guard
- C. Loop guard
- D. BPDU filtering

**Answer:** C

#### NEW QUESTION 157

Which mechanism provides Layer 2 fault isolation between data centers?

- A. fabric path
- B. OTL
- C. advanced VPLS
- D. LISP
- E. TRILL

**Answer:** D

#### NEW QUESTION 162

Your network operations team is deploying Access Control Lists (ACLs) across your Internet gateways. They wish to place an ACL inbound on the Internet gateway interface facing the core network (the "trusted" interface). Which IP address would the ACL need for traffic sourced from the inside interface, to match the source address of the traffic?

- A. inside global
- B. outside global
- C. inside local
- D. outside local

**Answer:** C

#### NEW QUESTION 163

Two routers R1 and R2 are directly connected through an Ethernet link. Both routers are running OSPF over the Ethernet link and OSPF has been registered with BFD. R1 has been set up to transmit BFD at a 50 ms interval, but R2 can receive only at a 100 ms rate due to platform limitations. What does this mean?

- A. After the initial timer exchange
- B. R2 sets its transmission rate to the R1 Desired Min TX interval
- C. After the initial timer exchange
- D. R1 sets its transmission rate to the R2 Required Min RX interval
- E. Timers renegotiate indefinitely, so the timer exchange phase never converges
- F. R2 sets the P-bit on all BFD control packets until R2 sends a packet with the F-bit set

Answer: B

#### NEW QUESTION 164

Drag and drop the optical technology design characteristics on the left to the correct optical technologies on the right. Not all options are used

suited for short-haul and long-haul distances	CWDM (Coarse Wavelength Division Multiplexing)	target 1
number of channels can be 40 or more		target 2
large channel spacing (2000 GHz)		target 3
small channel spacing (100 or 50 GHz)	DWDM (Dense Wavelength Division Multiplexing)	target 4
suited for short-haul, typically limited to Metropolitan networks		target 5
maximum of 16 channels		target 6
only suitable for ring or dual-ring topology		

- A. Mastered
- B. Not Mastered

Answer: A

#### Explanation:

- 1 - target 4
- 2 - target 5
- 3 - target 1
- 4 - target 6
- 5 - target 2
- 6 - target 3

#### NEW QUESTION 167

Company XYZ must design a strategy to protect their routers from DoS attacks, such as traffic destined to the router's own route processor, using separate control plane categories. Which two capabilities can be used to achieve this requirement? (Choose two.)

- A. Control Plane Protection using queue thresholding on the transit subinterface
- B. Control Plane Protection using port filtering on the transit subinterface
- C. Control Plane Protection using port filtering on the main interface
- D. Control Plane Protection using queue thresholding on the host subinterface
- E. Control Plane Protection using port filtering on the host subinterface

Answer: DE

#### NEW QUESTION 169

Company ABC wants to minimize the risk of users plugging unauthorized switches and hubs into the network Which two features can be used on the LAN access ports to support this design requirement? (Choose two.)

- A. Loop Guard
- B. PortFast
- C. DTF
- D. Root Guard
- E. BPDU Guard

Answer: BE

#### NEW QUESTION 173

How must the queue sizes be designed to ensure that an application functions correctly?

- A. Each individual device queuing delay in the chain must be less than or equal to the application required delay.
- B. The queuing delay on every device in the chain must be exactly the same to the application required delay.
- C. The default queue sizes are good for any deployment as it compensates the serialization delay.
- D. The sum of the queuing delay of all devices plus serialization delay in the chain must be less than or equal to the application required delay.

Answer: D

#### NEW QUESTION 178

Which DCI technology utilizes a “flood and learn” technique to populate the Layer2 forwarding table?

- A. LISP
- B. OTV
- C. VPLS
- D. EVPN

**Answer:** C

#### NEW QUESTION 182

What are two primary design constraints when a robust infrastructure solution is created? (Choose two.)

- A. monitoring capabilities
- B. project time frame
- C. staff experience
- D. component availability
- E. total cost

**Answer:** BE

#### NEW QUESTION 185

Which two features describe controller-based networking solutions compared to traditional networking solutions? (Choose two.)

- A. inflate licensing costs
- B. reduce network configuration complexity
- C. provide centralization of primary IT functions
- D. allow for fewer network failures
- E. increase network bandwidth usage

**Answer:** BC

#### NEW QUESTION 186

According to the CIA triad principles for network security design, which principle should be priority for a Zero Trust network?

- A. requirement for data-in-motion encryption and 2FA authentication
- B. requirement for data-at-rest encryption for user identification within the VPN termination hardware
- C. categorization of systems, data, and enterprise BYOD assets that are connected to network zones based on individual privacy needs
- D. ensuring that authorized users have high-availability system access from defined zones to defined systems or zones

**Answer:** A

#### NEW QUESTION 190

An enterprise campus is adopting a network virtualization design solution with these requirements

- It must include the ability to virtualize the data plane and control plane by using VLANs and VRFs
- It must maintain end-to-end logical path transport separation across the network
- resources available grouped at the access edge

Which two primary models can this network virtualization design be categorized? (Choose two)

- A. Path isolation
- B. Session isolation
- C. Group virtualization
- D. Services virtualization
- E. Edge isolation

**Answer:** AD

#### NEW QUESTION 192

A legacy enterprise is using a Service Provider MPLS network to connect its head office and branches. Recently, they added a new branch to their network. Due to physical security concerns, they want to extend their existing IP CCTV network of the head office to the new branch, without any routing changes in the network. They are also under some time constraints. What is the best approach to extend the existing IP CCTV network to the new branch, without incurring any IP address changes?

- A. L2TPv3
- B. VXLAN
- C. EoMPLS

**Answer:** B

#### NEW QUESTION 193

Which two conditions must be met for EIGRP to maintain an alternate loop-free path to a remote network? (Choose two.)

- A. The Reported Distance from a successor is lower than the local Feasible Distance.
- B. The Reported Distance from a successor is higher than the local Feasible Distance.
- C. The feasibility condition does not need to be met.
- D. The Feasible Distance from a successor is lower than the local Reported Distance.



E. A feasible successor must be present.

**Answer:** AE

#### NEW QUESTION 196

Company XYZ wants to use the FCAPS ISO standard for network management design. The focus of the design should be to minimize network outages by employing a set of procedures and activities to detect and isolate network issues and the appropriate corrective actions to overcome current issues and prevent them from occurring again. Which layer accomplishes this design requirement?

- A. fault management
- B. performance management
- C. security management
- D. accounting management

**Answer:** A

#### NEW QUESTION 199

Company XYZ needs advice in redesigning their legacy Layer 2 infrastructure. Which technology should be included in the design to minimize or avoid convergence delays due to STP or FHRP and provide a loop-free topology?

- A. Use switch clustering in the access layer.
- B. Use switch clustering in the core/distribution layer.
- C. Use spanning-tree PortFast.
- D. Use BFD.

**Answer:** B

#### NEW QUESTION 204

Company XYZ was not satisfied with the reconvergence time OSPF is taking. BFD was implemented to try to reduce the reconvergence time, but the network is still experiencing delays when having to reconverge. Which technology will improve the design?

- A. BFDecho
- B. Change the protocol to BGP
- C. Change the OSPF hello and dead intervals

**Answer:** B

#### NEW QUESTION 209

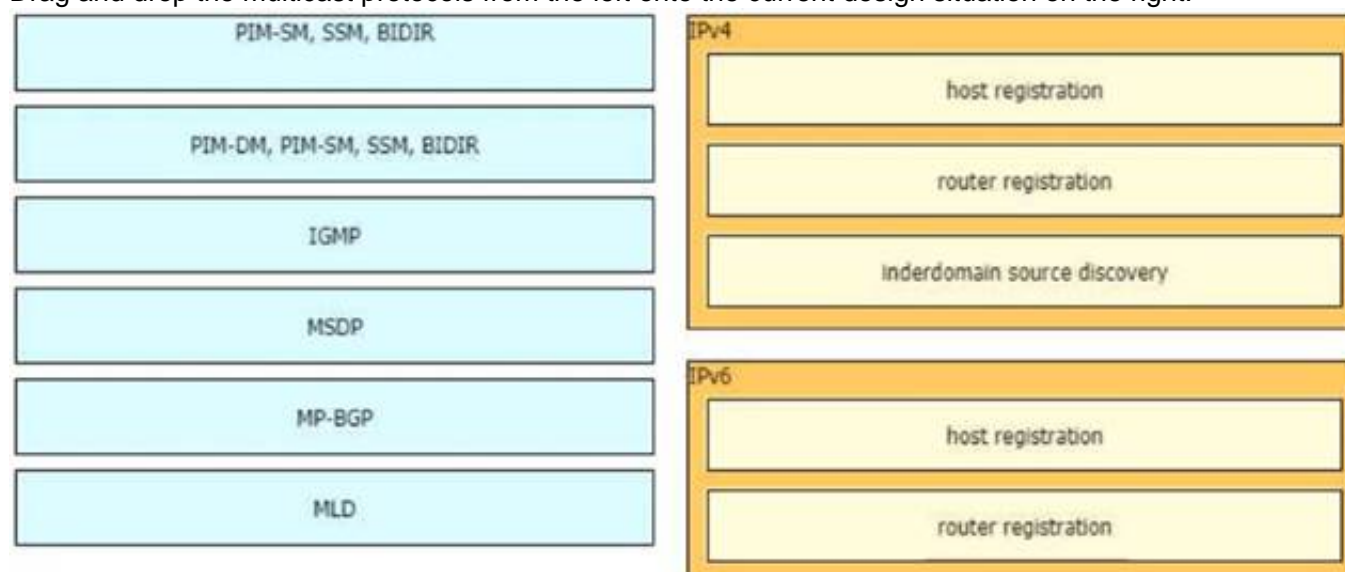
A network engineering team is in the process of designing a lab network for a customer demonstration. The design engineer wants to show that the resiliency of the MPLS traffic Engineering Fast Reroute solution has the same failover/failback times as a traditional SONET/SDH network (around 50MSEC). In order to address both link failure and node failure within the lab typology network, which type of the MPLS TE tunnels must be considered for this demonstration?

- A. TE backup tunnel
- B. Next-hop (NHop) tunnel
- C. FRR Backup tunnel
- D. next-next-hop (NNHop) tunnel

**Answer:** D

#### NEW QUESTION 212

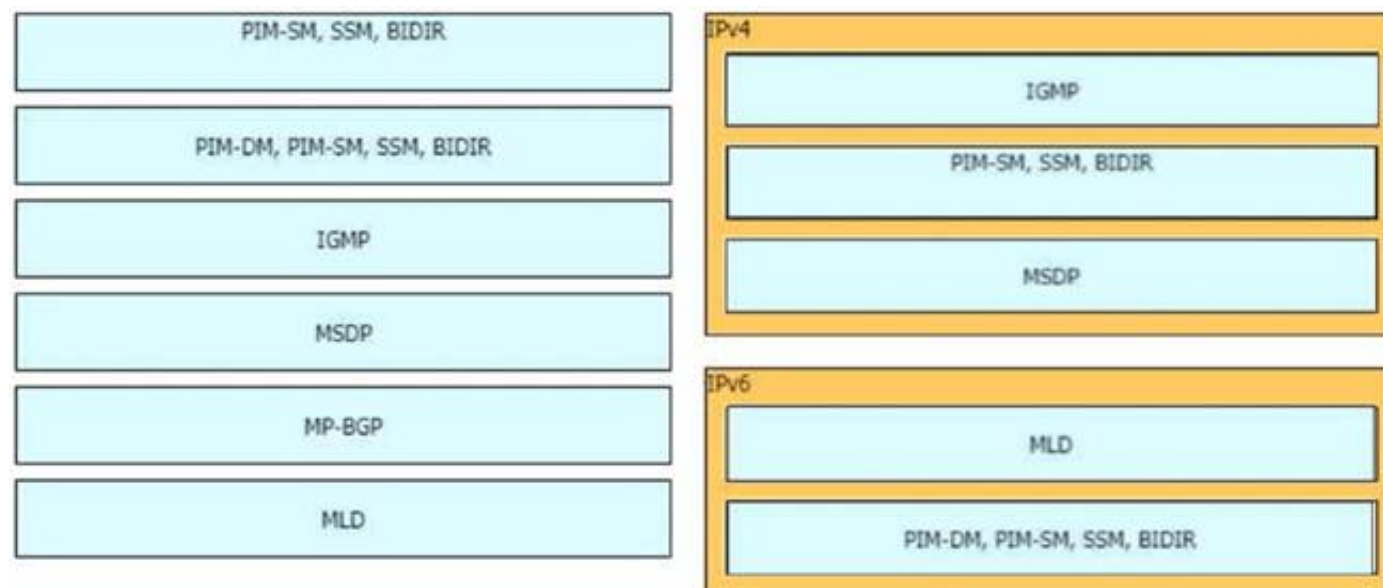
Drag and drop the multicast protocols from the left onto the current design situation on the right.



- A. Mastered
- B. Not Mastered

**Answer:** A

**Explanation:**



#### NEW QUESTION 215

An enterprise solution team is performing an analysis of multilayer architecture and multicontroller SDN solutions for multisite deployments. The analysis focuses on the ability to run tasks on any controller via a standardized interface. Which requirement addresses this ability on a multicontroller platform?

- A. Deploy a root controller to gather a complete network-level view.
- B. Use the East-West API to facilitate replication between controllers within a cluster.
- C. Build direct physical connectivity between different controllers.
- D. Use OpenFlow to implement and adapt new protocols.

**Answer:** D

#### NEW QUESTION 216

Which two actions must merchants do to be compliant with the Payment Card Industry Data Security Standard? (Choose two.)

- A. conduct risk analyses
- B. install firewalls
- C. use antivirus software
- D. establish monitoring policies
- E. establish risk management policies

**Answer:** BC

#### NEW QUESTION 217

Which two features control multicast traffic in a VLAN environment? (Choose two)

- A. IGMP snooping
- B. MLD snooping
- C. RGMP
- D. PIM snooping
- E. pruning

**Answer:** AB

#### NEW QUESTION 220

SD-WAN can be used to provide secure connectivity to remote offices, branch offices, campus networks, data centers, and the cloud over any type of IP-based underlay transport network. Which two statements describe SD WAN solutions? (Choose two.)

- A. SD-WAN networks are inherently protected against slow performance.
- B. Control and data forwarding planes are kept separate.
- C. Improved operational efficiencies result in cost savings.
- D. Solutions include centralized orchestration, control, and zero-touch provisioning.
- E. Solutions allow for variations of commodity and specialized switching hardware.

**Answer:** BD

#### NEW QUESTION 222

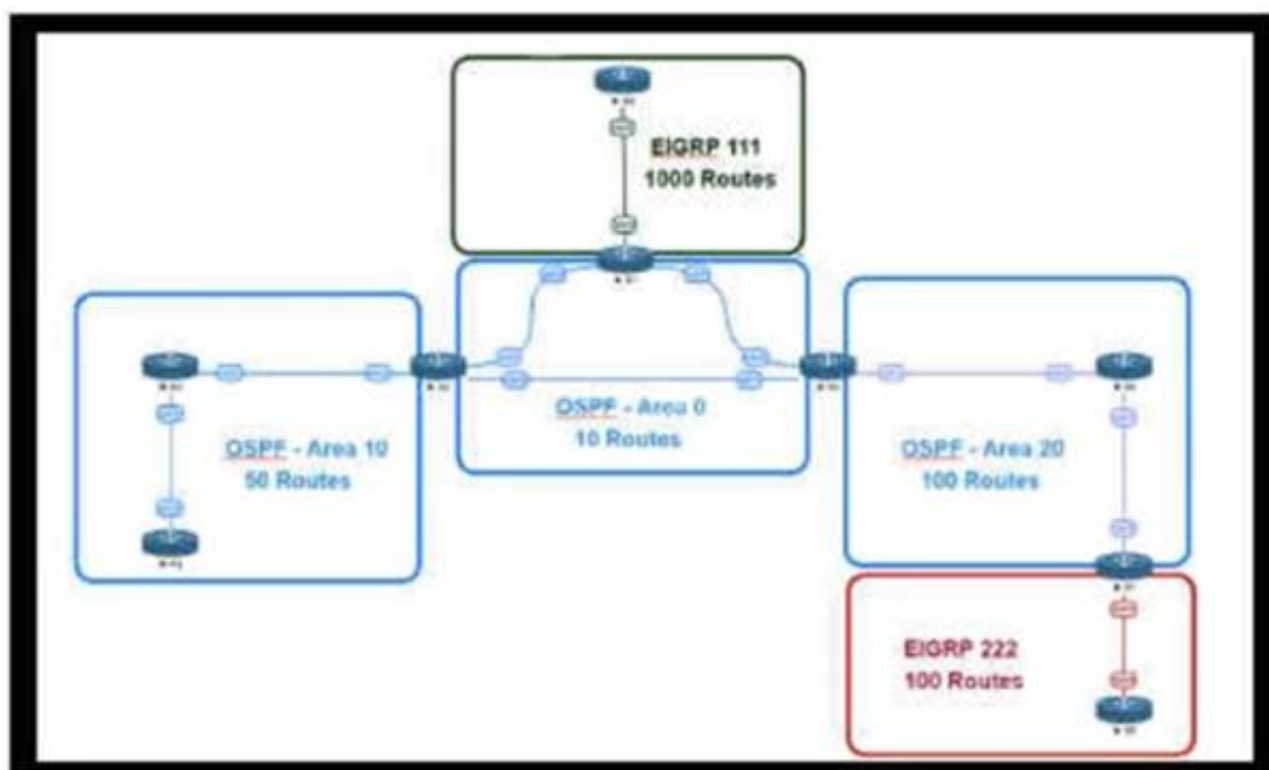
You have been asked to design a remote access VPN solution to support up to 2000 devices. You must ensure that only corporate assets are allowed to connect to the VPN, and users must authenticate to gain access of their based on their user role. Users must use a password that they are already using to access existing applications . A user may not always use the same device to access the VPN. Which two options combined meet the requirements? (Choose two)

- A. Use local usernames and passwords on the VPN device
- B. Deploy a central authentication directory that users can be authenticated and authorized against
- C. Deploy certificates that are unique to each user
- D. Deploy an IPsec VPN solution
- E. Deploy certificates that are unique to each device
- F. Deploy a SSL VPN solution

**Answer:** BF

#### NEW QUESTION 226

Refer to the exhibit.



An engineer is designing a multiarea OSPF network for a client who also has a large EIGRP domain. EIGRP routes are getting redistributed into OSPF. OSPF area 20 has routers with limited memory and CPU resources. The engineer wants to block routes from EIGRP 111 from propagating into area 20 and allow EIGRP 222 routes to flow. In which OSPF area type fulfills this design requirement?

- A. area 20 as a stub area
- B. type 5 LSA filtering on the ASBR between EIGRP 111 and area 0
- C. area 20 as a NSSA area
- D. type 3 LSA filtering on the ABR between area 0 and area 20

Answer: C

#### NEW QUESTION 231

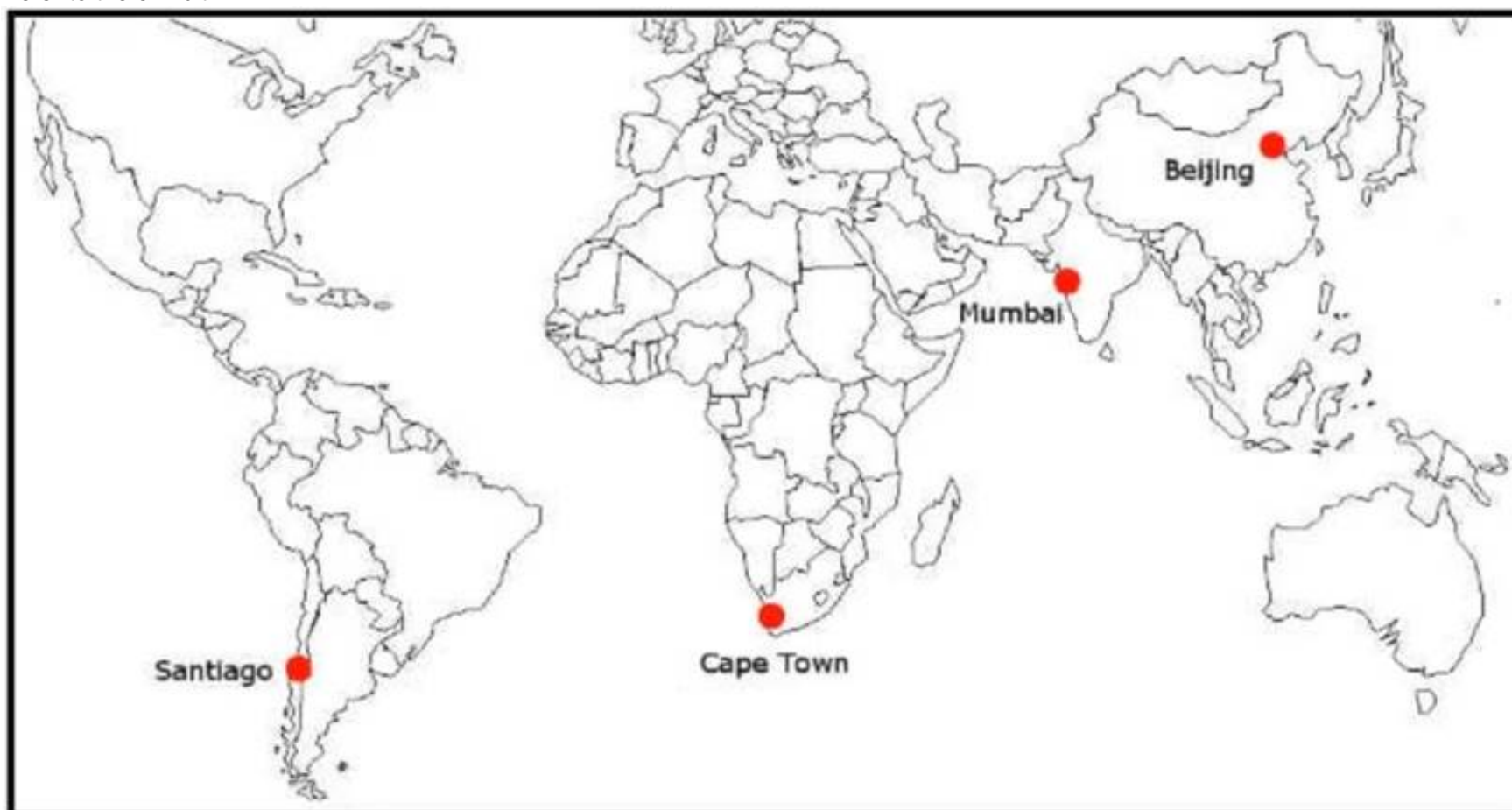
IPFIX data collection via standalone IPFIX probes is an alternative to flow collection from routers and switches. Which use case is suitable for using IPFIX probes?

- A. performance monitoring
- B. security
- C. observation of critical links
- D. capacity planning

Answer: A

#### NEW QUESTION 235

Refer to the exhibit.



ACME Mining has four data centers in Santiago, Cape Town, Mumbai, and Beijing, full-mesh connected via a 400 Mb/s EVPLAN. They want to deploy a new mission-critical application with these requirements:

- > cluster heartbeat 2 Mb/s continuous (250 KB/s)
- > cluster heartbeat one-way maximum latency 100 ms

These are the current ping test results between the four data centers:

	Santiago	Cape Town	Mumbai	Beijing
Santiago	-	280 ms	378 ms	409 ms
Cape Town	280 ms	-	185 ms	445 ms
Mumbai	383 ms	176 ms	-	443 ms
Beijing	430 ms	448 ms	442 ms	-

Which hosting data center pair can host the new application?

- A. Mumbai and Beijing
- B. Santiago and Cape Town
- C. Santiago and Mumbai
- D. Cape Town and Mumbai
- E. Cape Town and Beijing
- F. Santiago and Beijing

**Answer: D**

#### NEW QUESTION 239

As network designer, which option is your main concern with regards to virtualizing multiple network zones into a single hardware device?

- A. Fate sharing
- B. CPU resource allocation
- C. Congestion control
- D. Security
- E. Bandwidth allocation

**Answer: A**

#### NEW QUESTION 242

The administrator of a small branch office wants to implement the Layer 2 network without running STP The office has some redundant paths Which mechanism can the administrator use to allow redundancy without creating Layer 2 loops?

- A. Use double-sided VPC on both switches
- B. Use two port channels as Flex links
- C. Use fabric path with ECMP
- D. Use 802.3ad link bundling.

**Answer: B**

#### NEW QUESTION 245

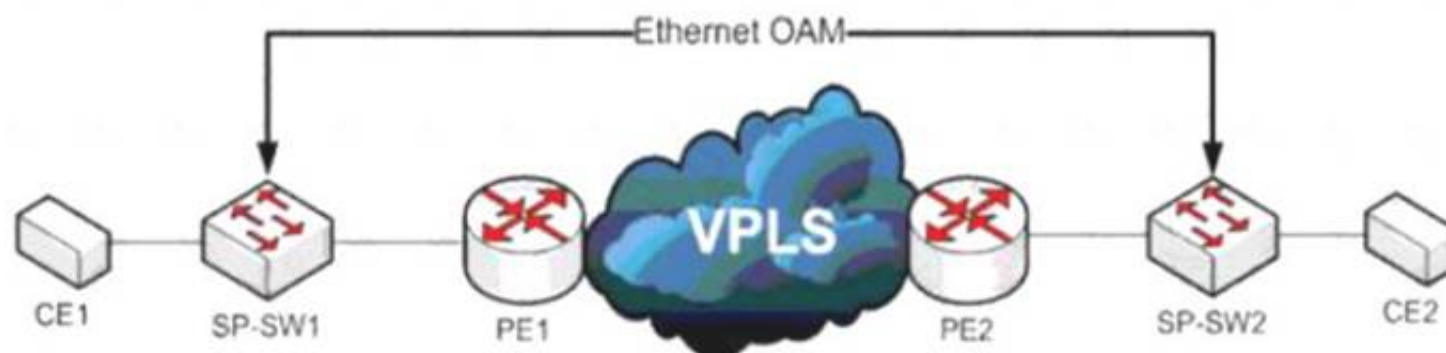
Which two foundational aspects of IoT are still evolving and being worked on by the industry at large? (Choose two)

- A. WiFi protocols
- B. Regulatory domains
- C. Low energy Bluetooth sensors
- D. IoT consortia
- E. Standards

**Answer: AC**

#### NEW QUESTION 250

Refer to the exhibit



A service provider has a requirement to use Ethernet OAM to detect end-to-end connectivity failures between SP-SW1 and SP-SW2 Which two ways to design this solution are true? (Choose two)

- A. Enable unicast heartbeat messages to be periodically exchanged between MEPs
- B. Enable Connectivity Fault Management on the SP switches
- C. Use upward maintenance endpoints on the SP switches
- D. Forward E-LMI PDUs over VPLS
- E. Forward LLD PDUs over the VPLS

**Answer: BC**



#### NEW QUESTION 253

Your company wants to deploy a new data center infrastructure Based on the requirements you have chosen VXLAN as encapsulation technology The customer is concerned about miss-configuration of Layer 2 devices and DC wide outages caused by Layer 2 loops What do you answer?

- A. VXLAN offers native loop avoidance mechanism
- B. Storm Control should be enabled on all ports
- C. VPC+ could prevent L2 loop on access ports
- D. BPDU Guard should be enabled on all VTEP access ports

**Answer:** D

#### NEW QUESTION 254

Which design consideration is valid when you contrast fabricPath and trill?

- A. FabricPath uses IS-IS, but TRILL uses VxLAN
- B. FabricPath permits active-active FHRP and TRILL support anycast gateway.
- C. FabricPath Permits ECMP, but TRILL does not
- D. FabricPath permits active-active mode, but TRILL supports only active-standby mode.

**Answer:** B

#### NEW QUESTION 259

Company XYZ runs OSPF in their network. A design engineer decides to implement hot-potato routing architecture. How can this implementation be achieved?

- A. Enable iBGP and apply prepend to ensure all prefixes will have the same length of the AS path attribute value.
- B. Redistribute the external prefixes onto OSPF and ensure the total metric calculation includes only the ext value and the value is the same in all ASBRs.
- C. Enable OSPF load-balancing over unequal cost path.
- D. Redistribute the external prefixes onto OSPF and ensure that the total metric calculation includes external internal values.

**Answer:** D

#### NEW QUESTION 264

Company XYZ is designing the network for IPv6 security and they have these design requirements:

- A switch or router must deny access to traffic from sources with addresses that are correct, but are topologically incorrect
- Devices must block Neighbor Discovery Protocol resolution for destination addresses that are not found in the binding table.

Which two IPv4 security features are recommended for this company? (Choose two)

- A. IPv6 DHCP Guard
- B. IPv6 Source Guard
- C. IPv6 Destination Guard
- D. IPv6 Prefix Guard
- E. IPv6 RA Guard

**Answer:** CD

#### Explanation:

[https://www.cisco.com/c/dam/global/ja\\_jp/td/docs/ios-xml/ios/ipv6\\_fhsec/configuration/xe-16/ip6f-xe-16-book](https://www.cisco.com/c/dam/global/ja_jp/td/docs/ios-xml/ios/ipv6_fhsec/configuration/xe-16/ip6f-xe-16-book).

#### NEW QUESTION 269

Which architecture does not require an explicit multicast signaling protocol, such as PIM or P2MP, to signal the multicast state hop-by-hop, but instead uses a link state protocol to advertise the multicast forwarding state?

- A. Binary indexed explicit routing
- B. Binary intermediate enhanced routing
- C. Bit indexed explicit replication
- D. Bi-directional implicit replication

**Answer:** C

#### NEW QUESTION 274

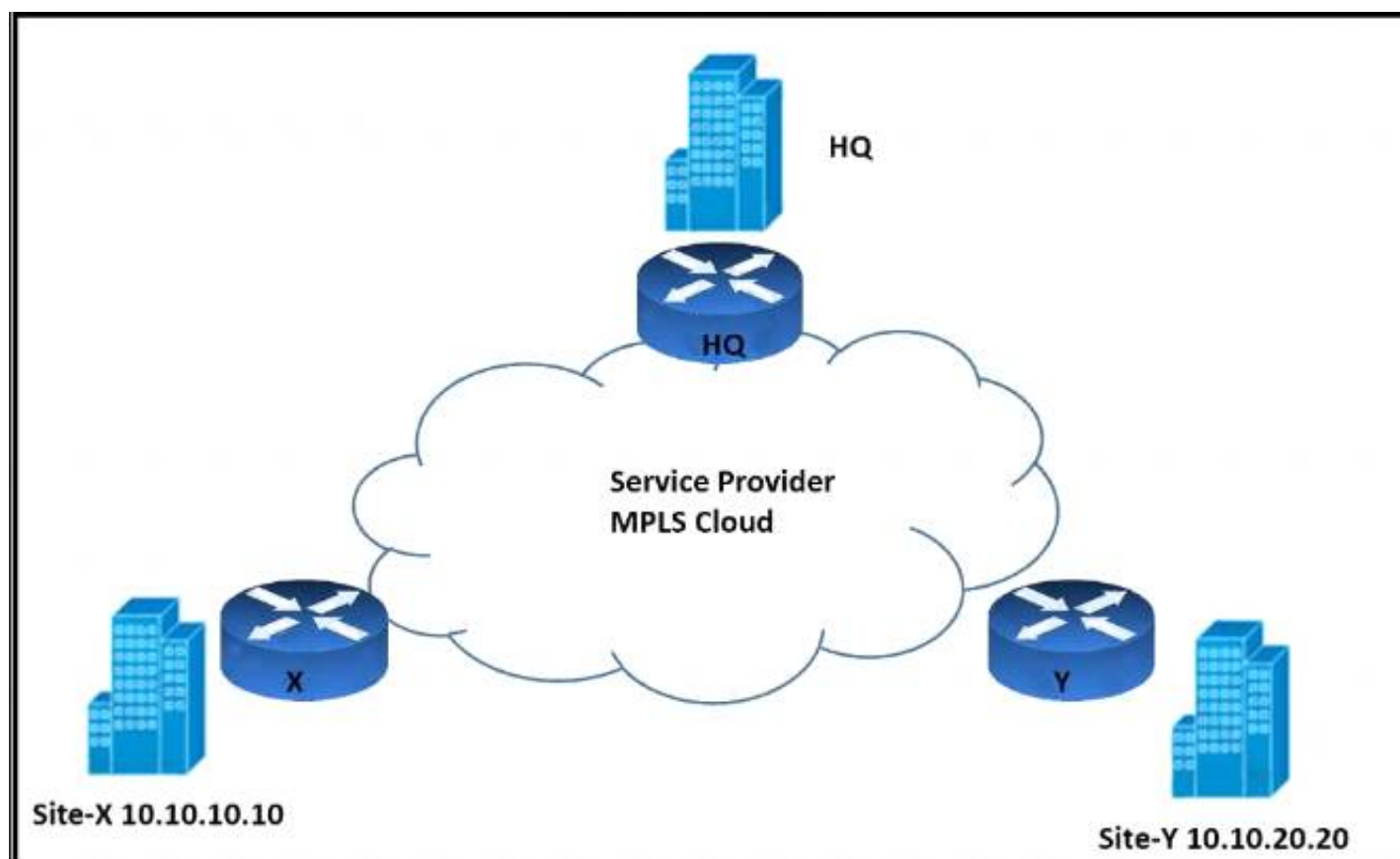
A green data center is being deployed and a design requirement is to be able to readily scale server virtualization Which IETF standard technology can provide this requirement?

- A. data center bridging
- B. unified fabric
- C. Transparent Interconnection of Lots of Links
- D. fabric path

**Answer:** C

#### NEW QUESTION 275

Refer to the exhibit.



An architect must design an enterprise WAN that connects the headquarters with 22 branch offices. The number of remote sites is expected to triple in the next three years. The final solution must comply with these requirements:

- Only the loopback address of each of the enterprise CE X and Y routers must be advertised to the interconnecting service provider cloud network.
- The transport layer must carry the VPNv4 label and VPN payload over the MP-BGP control plane.
- The transport layer must not be under service provider control.

Which enterprise WAN transport virtualization technique meets the requirements?

- A. EIGRP Over the Top
- B. MPLS over BGP over multipoint GRE
- C. DMVPN per VRF
- D. point-to-point GRE per VRF

**Answer: B**

#### NEW QUESTION 278

Company XYZ wants to deploy OSPF. The design plan requires that two OSPF networks be mutually redistributed at multiple locations and ensure end-to-end connectivity to all of the company's networks Which technology can be used to fulfill the requirements while avoiding the creation of routing loops?

- A. Create a virtual link between ASBRs.
- B. Change the router ID for both ASBRs.
- C. Redistribute routes as external type 2 routes.
- D. Use route maps on ASBRs to filter routes with tags so they are not redistributed.

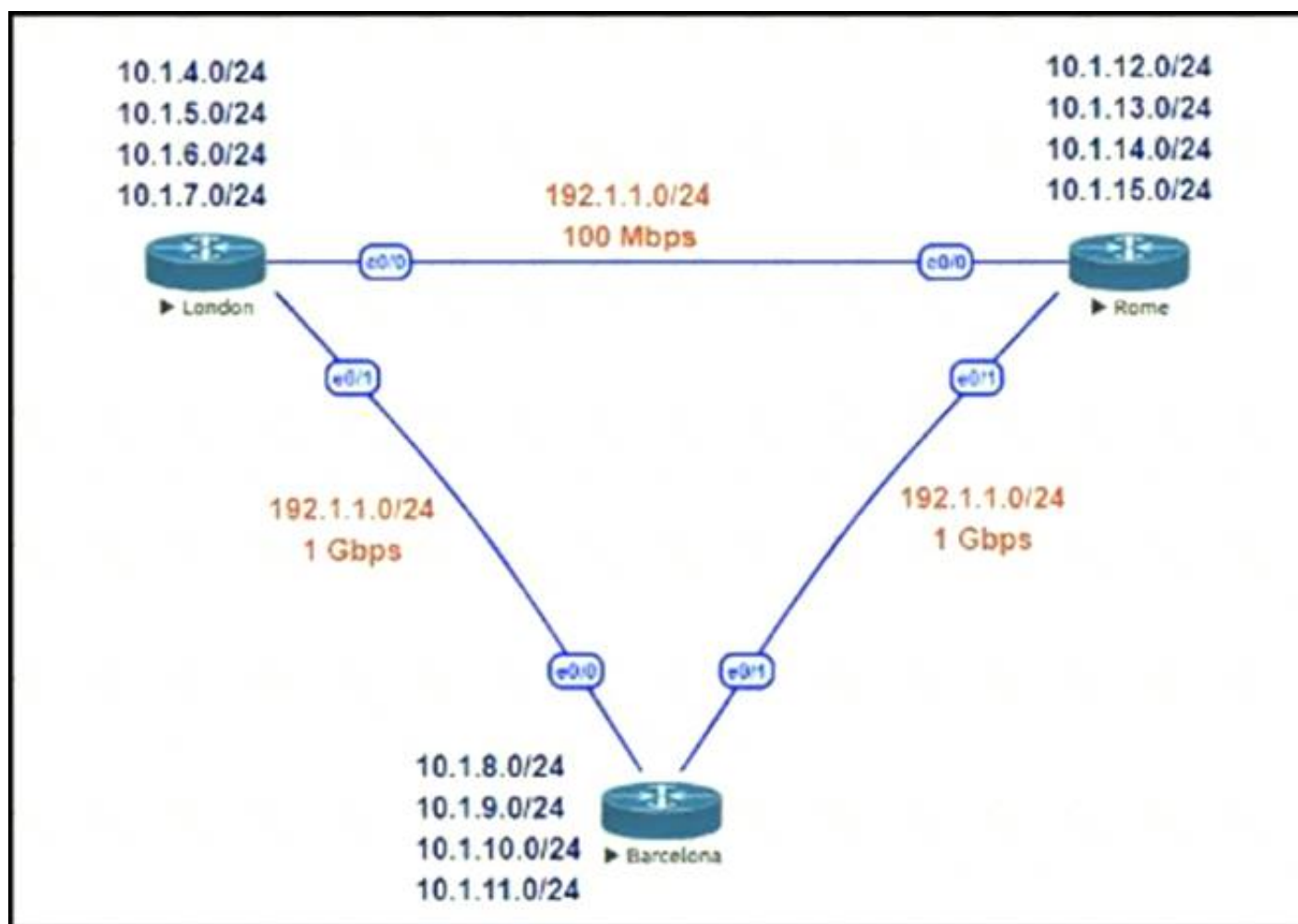
**Answer: D**

#### Explanation:

<https://www.cisco.com/c/en/us/support/docs/ip/open-shortest-path-first-ospf/4170-ospfprocesses.html>

#### NEW QUESTION 283

Refer to the exhibit.



This network is running EIGRP as the routing protocol and the internal networks are being advertised in EIGRP. Based on the link speeds, all traffic between London and Rome is getting propagated via Barcelona and the direct link between London and Rome is not being utilized under normal working circumstances. The EIGRP design should allow for efficiency in the routing table by minimizing the routes being exchanged. The link between London and Rome should be utilized for specific routes. Which two steps accomplish this task? (Choose two.)

- A. Configure EIGRP route summarization on all the interfaces to summarize the internal LAN routes
- B. Filter the routes on the link between London and Barcelona
- C. Filter the routes on the link between London and Rome
- D. Configure route leaking of summary routes on the link between London and Rome

Answer: AD

#### NEW QUESTION 287

An enterprise requires MPLS connected branches to access cloud-based Microsoft 365 services over an SD-WAN solution. Internet access is available only at dual regional hub sites that are connected to the MPLS network. Which connectivity method provides an optimum access method to the cloud-based services if one ISP suffers loss or latency?

- A. Cloud onRamp gateway site
- B. Cloud onRamp SWG
- C. Cloud onRamp
- D. Cloud onRamp SaaS

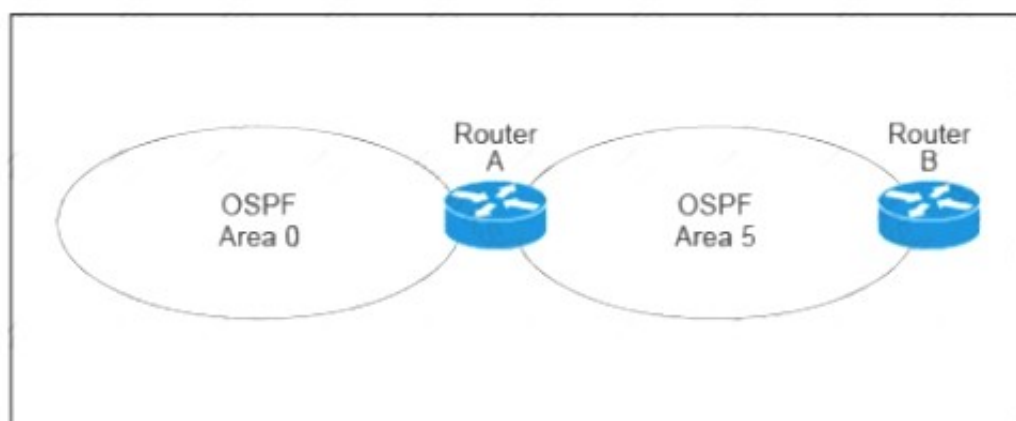
Answer: D

#### Explanation:

<https://www.cisco.com/c/en/us/td/docs/routers/sdwan/configuration/cloudonramp/vedge-20-x/cloud-onramp-boo>

#### NEW QUESTION 289

Refer to the exhibit.



A customer runs OSPF with Area 5 between its aggregation router and an internal router. When a network change occurs in the backbone, Area 5 starts having connectivity issues due to the SPF algorithm recalculating an abnormal number of times in Area 5. You are tasked to redesign this network to increase resiliency on the customer network with the caveat that Router B does not support the stub area. How can you accomplish this task?

- A. Increase the bandwidth on the connection between Router A and Router B
- B. Implement LSA filtering on the ABR, allowing summary routes and preventing more specific routes into Area 5
- C. Create a virtual link to Area 0 from Router B to the ABR
- D. Turn on LSA throttling on all devices in Area 5
- E. Set Area 5 to stubby at the ABR anyway

**Answer:** B

**NEW QUESTION 294**

Company XYZ is designing the IS-IS deployment strategy for their multiarea IS-IS domain. They want IS-IS neighbour relationships to be minimized on each network segment and want to optimize the size of the IS-IS LSDB on each router. Which can design can be used to meet these requirements?

- A. Design all routers as Level 2 router
- B. Set the links between the routers as Level 1 with the area
- C. Design the network so that the routers connecting to other areas are Level 2 routers and internal routers are Level 1
- D. Design the network so that all routers are Level 1 routers
- E. Design the network so that the routers connecting to other areas are Level 1/Level 2 routers and internal routers are Level 1

**Answer:** D

**NEW QUESTION 298**

.....



## THANKS FOR TRYING THE DEMO OF OUR PRODUCT

Visit Our Site to Purchase the Full Set of Actual 400-007 Exam Questions With Answers.

We Also Provide Practice Exam Software That Simulates Real Exam Environment And Has Many Self-Assessment Features. Order the 400-007 Product From:

<https://www.2passeasy.com/dumps/400-007/>

## Money Back Guarantee

### 400-007 Practice Exam Features:

- \* 400-007 Questions and Answers Updated Frequently
- \* 400-007 Practice Questions Verified by Expert Senior Certified Staff
- \* 400-007 Most Realistic Questions that Guarantee you a Pass on Your FirstTry
- \* 400-007 Practice Test Questions in Multiple Choice Formats and Updatesfor 1 Year