

Cisco

Exam Questions 300-425

Designing Cisco Enterprise Wireless Networks (ENWLSD)



NEW QUESTION 1

A customer asks an engineer to explain the concept of mobility domains and mobility groups. Which statement does the engineer respond with?

- A. A mobility group does not constrain the distribution of security context of a client and also does not constrain AP fail-over between controllers when the WLC are in the same mobility domain.
- B. If WLCs are in the same mobility domain, they communicate with each other but, if an anchor WLC is present it must be in the same mobility domain for communication to be possible.
- C. If WLCs are in the same mobility domain, they communicate with each other.
- D. Mobility groups constrain the distribution of security context of a client and also constrain AP fail-over between controllers.
- E. WLCs do not need to be in the same mobility domain to communicate with each other.
- F. Mobility groups constrain the distribution of security context of a client and also constrain AP fail-over between controllers.

Answer: C

Explanation:

https://www.cisco.com/c/en/us/td/docs/wireless/controller/8-0/configuration-guide/b_cg80/b_cg80_chapter_010

NEW QUESTION 2

A high-density wireless network is designed. Which Cisco WLC configuration setting must be incorporated in the design to encourage clients to use the 5 GHz spectrum?

- A. Band Select
- B. RRM
- C. Cisco Centralized Key Management
- D. load balancing

Answer: A

Explanation:

Band Select will impact the initial scan, steering clients towards **5 GHz**

NEW QUESTION 3

A customer is looking for a network design with Cisco Hyperlocation using AP4800 for location tracking via a custom mobile app. Issues appeared in the past with refresh rates for location updates. What needs to be implemented to meet these requirements?

- A. Cisco CMX SDK in the location app
- B. redundant CMX and fetch location in round-robin fashion.
- C. device Bluetooth via the app
- D. Cisco FastLocate technology

Answer: D

NEW QUESTION 4

What is the recommended cell overlap when designing a wireless network for Cisco Hyperlocation?

- A. 20%
- B. 30%
- C. 40%
- D. 50%

Answer: A

Explanation:

• **20% cell overlap** for optimized roaming and location calculations

NEW QUESTION 5

Refer to the exhibit.

General		Credentials	Interfaces	High Availability	Inventory	Advanced
	Name		Management IP Address (IPv4/IPv6)			
Primary Controller	WLC-Primary		192.168.1.11			
Secondary Controller	WLC-Secondary		10.42.98.11			
Tertiary Controller						
AP Failover Priority		Low				

An engineer determined that during a recent controller failure, some APs did not failover to their secondary controller based on the network design, which has sufficient licenses for all APs. The controllers are not in a mobility group but have A records for their hostnames in DNS. Which setting needs to be addressed?

- A. The controllers must be in the same mobility group.
- B. The secondary controller IP address is incorrect.
- C. DNS hostnames are required to be FQDN.
- D. The AP failover priority was not set high enough.

Answer: D

NEW QUESTION 6

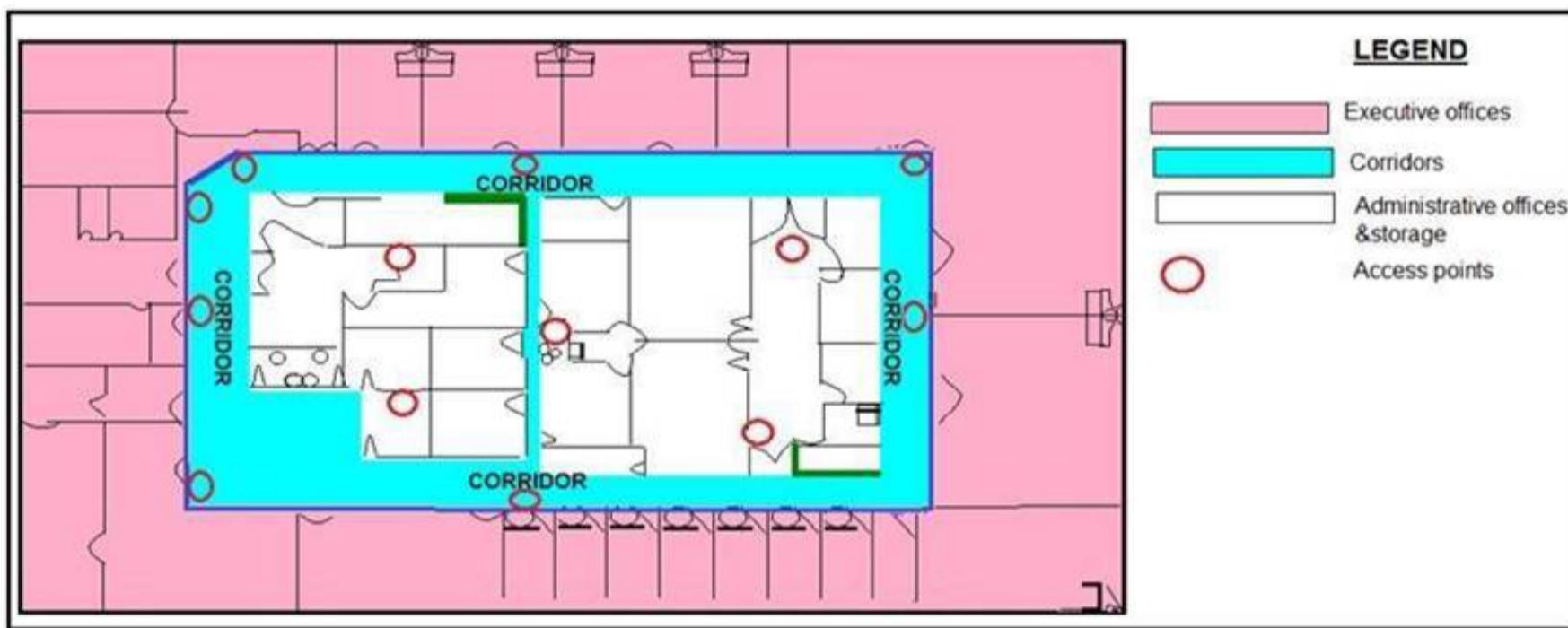
An engineer has designed an anchor redundancy for guest clients connecting to SSID with auto-anchor configured. After adding a second Anchor WLC under the SSID mobility anchor list, clients are load-balanced between existing and new anchors instead of having one anchor as active and the other one as standby. Which feature should be included in the design that will be configured on the WLC running 8.1 or above to ensure anchor redundancy?

- A. Auto-Anchor Foreign Mapping
- B. AP groups
- C. Guest Anchor Priority
- D. 802.11r

Answer: C

NEW QUESTION 7

Refer to the exhibit.



What is the main reason why the Wi-Fi design engineer took a different approach than installing the APs in the offices, even though that installation provides better coverage?

- A. aesthetics
- B. transmit power considerations
- C. antenna gain
- D. power supply considerations

Answer: B

Explanation:

<https://www.cisco.com/en/US/docs/solutions/Enterprise/Mobility/emob30dg/RFDDesign.html#wp1000551>

NEW QUESTION 8

When conducting a site survey for real-time traffic over wireless, which two design capabilities of smartphones and tablets must be considered? (Choose two.)

- A. no support for 802.11ac
- B. higher data rates than laptops
- C. fewer antennas than laptops
- D. no support for 802.11r
- E. lower data rates than laptops

Answer: BE

Explanation:

Site surveys are one of the basic requirements when you deploy a WLAN, and you must always consider the Wi-Fi capabilities of the client devices or endpoints. Most smartphones and tablets support 802.11. However, generally, the smartphones and tablets have fewer antennas and lower data rates than laptops. In addition, most are not purpose-built for the enterprise WLAN market. Almost all smartphones and tablets support enterprise security policies. However, many of them do not support

NEW QUESTION 9

A university is in the process of designing a wireless network in an auditorium that seats 500 students and supports student laptops. Which design methodology should the university implement in the auditorium?

- A. roaming design model
- B. voice design model
- C. location design model
- D. high-density design model

Answer: B

Explanation:

https://www.cisco.com/c/dam/en_us/solutions/industries/docs/education/cisco_wlan_design_guide.pdf

NEW QUESTION 10

An engineer is reducing the subnet size of the corporate WLAN by segmenting the VLAN into smaller subnets. Clients will be assigned a subnet by location. Which type of groups can the engineer use to map the smaller subnets to the corporate WLAN?

- A. WLC port groups
- B. RF groups
- C. AP groups
- D. interface groups

Answer: D

Explanation:

- AP groups give the ability to statically map Wi-Fi service (WLAN) to VLAN based on physical location
- Users see the same Wi-Fi service on all sites.
- Admin can monitor and filter based on different IP@ each site
- Can also be used to have smaller Wi-Fi subnets

NEW QUESTION 10

Multiple WLCs are implemented in a high-availability configuration in a mobility group. APs are deployed with only a primary controller assigned. By default, which mobility group member controller do the orphaned APs join in the event of a failed controller?

- A. controller with the most available AP free license capacity
- B. controller with the lowest percent of associated APs per license capacity
- C. controller with the least CPU utilization over the last reporting period
- D. controller with the least number of associated APs

Answer: D

Explanation:

<https://mrncciew.com/2013/04/07/ap-failover/>

NEW QUESTION 13

How does AP failover priority for access points function when configured with priority 1 or 4?

- A. When configured with priority 1, the access point is assigned with the highest priority level and it is marked as critical
- B. This access point fails over before other access points with the lower priority when there is primary controller failure.
- C. When configured with priority 4, the access point is assigned with the highest priority level and it is marked as critical
- D. This access point fails over before other access points with the lower priority when there is primary controller failure.
- E. When configured with priority 4, the access point is assigned with the lowest priority level and it is marked as low
- F. This access point fails over after other access points with the higher priority when there is primary controller failure.
- G. When configured with priority 1, the access point is assigned with the medium priority level and it is marked as medium
- H. This access point fails over after other access points with the higher priority when there is primary controller failure.

Answer: B

NEW QUESTION 17

An engineer must create data link redundancy for the company's Cisco Wireless LAN controller. The engineer has decided to configure LAG-based redundancy instead of port-based redundancy. Which three features of LAG-based redundancy influenced this decision? (Choose three.)

- A. Packets are always sent out on the same port they are received on.
- B. All interface traffic passes as long as one port is up.
- C. The same port has multiple untagged dynamic interfaces.
- D. Interface connection to two separate nonstacked switches is available.
- E. Full bandwidth of all links is available.
- F. Ports are grouped into multiple LAGs.

Answer: ABF

Explanation:

<https://community.cisco.com/t5/wireless-mobility-documents/lag-link-aggregation/ta-p/3128669>

NEW QUESTION 21

An enterprise is using two wireless controllers to support the wireless network. The data centre is located in the head office. Each controller has a corporate WLAN configured with the name Copr-NET390595865WLC-1 and Copr-NET68371638WLC-2. The APs are installed using a round-robin approach to load balance the traffic. What should be changed on the configuration to optimize roaming?

- A. Move all access points to one controller and use the other as N+1 HA.
- B. Use the same WLAN name for the corporate network on both controllers.
- C. Use the same WLAN name for the corporate network on both controllers.
- D. Place the access points per floor on the same controller.

Answer: A

NEW QUESTION 23

A customer is running a guest WLAN with a foreign/export-anchor setup. There is one anchor WLC in the US and two in Europe. Anchor WLC priorities are used to prefer local anchors. During a routine network audit, it is discovered that a large number of guest client sessions in the US are anchored to the WLCs in Europe. Which reason explains this behavior?

- A. The foreign WLC failed and recovered.
- B. The US anchor WLC failed and recovered.
- C. The US anchor WLC is anchored to itself with a priority value of zero.
- D. The anchor WLC is in the same mobility group.

Answer: B

Explanation:

<https://www.cisco.com/c/en/us/td/docs/wireless/controller/8-1/Enterprise-Mobility-8-1-Design-Guide/Enterprise>

NEW QUESTION 28

Which two considerations must a network engineer have when planning for voice over wireless roaming? (Choose two.)

- A. Full reauthentication introduces gaps in a voice conversation.
- B. Roaming time increases when using 802.1x + Cisco Centralized Key Management.
- C. Roaming occurs when the phone has seen at least four APs.
- D. Roaming occurs when the phone has reached -80 dBs or below.
- E. Roaming with only 802.1x authentication requires full reauthentication.

Answer: AE

Explanation:

https://www.cisco.com/c/en/us/td/docs/solutions/Enterprise/Mobility/vowlan/41dg/vowlan41dg-book/vowlan_c

NEW QUESTION 30

A customer has two Cisco 550B WLCs that manage all the access points in their network and provide N+1 redundancy and load balancing. The primary Cisco WLC has 60 licenses and the secondary Cisco WLC has 40. The customer wants to convert the N+1 model to an HA model and provide SSO. Configuration must be performed during a maintenance window. After performing all the configurations on both controllers, the config redundancy unit secondary command is issued on the secondary Cisco WLC and it fails. Which parameter needs to be in place to complete the configuration?

- A. A cable in the RP port
- B. The secondary Cisco WLC needs a minimum of 50 base licenses
- C. The primary Cisco WLC is already set as the secondary unit.
- D. SSO needs to be enabled

Answer: B

Explanation:

- With Release 7.4, an HA-SKU secondary controller can be configured as a backup controller for N+1 HA. For example, the following can be used as an HA-SKU controller:
 - 5508 Series Standalone controller with 50 AP license

NEW QUESTION 34

An AP is receiving 802.11 packets on its 802.11a radio with an RSSI value of -77 dBm. The current AP is part of an AP group that has been assigned an RF profile with RX-SOP set to Medium for 802.11a. Which action does the AP take with the packets?

- A. All frames are classified as non-Wi-Fi frames and are not decoded by the 5 GHz radio.
- B. Frames are decoded by the 2.4 GHz radio.
- C. All frames are classified as non-Wi-Fi frames and are not decoded by the 2.4 GHz radio.
- D. Frames are decoded by the 5 GHz radio.

Answer: C

NEW QUESTION 38

Campus users report a poor wireless experience. An engineer investigating the issue notices that in high-density areas, the wireless clients fail to switch the AP to which are automatically connected. This sticky client behavior is causing roaming issues. Which feature must the engineer configure?

- A. Load balancing and band select
- B. optimized roaming
- C. Layer 3 roaming
- D. Layer 2 roaming

Answer: B

Explanation:

https://www.cisco.com/c/en/us/td/docs/wireless/controller/technotes/80/hdx_final/b_hdx_dg_final/high_de

NEW QUESTION 42

An engineer is designing a new wireless network. The network needs to meet these requirements:

- support a high wireless client concentration
- support data over wireless
- support voice over wireless
- avoid interference

Which design approach should be taken?

- A. 5 GHz frequency band with channel bonding, to support 40 MHz channels
- B. 5 GHz frequency band without channel bonding, to support 20 MHz channels
- C. 5 GHz frequency band with channel bonding, to support 80 MHz channels.
- D. 2.4 GHz frequency band without channel bonding, to support 20 MHz channels

Answer: D

Explanation:

<https://www.cisco.com/c/en/us/support/docs/wireless/4400-series-wireless-lan-controllers/108184-config-802-1>

NEW QUESTION 45

Refer to the exhibit.

Redundancy Mgmt Ip	172.25.44.4
Peer Redundancy Mgmt Ip	172.25.44.5
Redundancy port Ip	169.254.44.4
Peer Redundancy port Ip	169.254.44.5
Redundant Unit	Primary
Mobility Mac Address	60:73:5C:D1:76:00
Keep Alive Timer (100 - 1000)	100 milliseconds
Keep Alive Retries (3 - 10)	3
Peer Search Timer (60 - 300)	120 seconds
Management Gateway Failover	Enabled
SSO	Disabled

An enterprise is using wireless as the main network connectivity for clients. To ensure service continuity, a pair of controllers will be installed in a datacentre. An engineer is designing SSO on the pair of controllers. What needs to be included in the design to avoid having the secondary controller go into maintenance mode?

- A. The Keep alive timer is too lo
- B. which causes synchronization problems.
- C. The connection between the redundancy ports is missing.
- D. The redundancy port must be the same subnet as the redundancy mgmt.
- E. The Global Configuration of SSO is set to Disabled on the controller.

Answer: B

Explanation:

'There are few scenarios where the Standby WLC may go into Maintenance Mode and not be able to communicate with the network and peer: • Non reachability to Gateway via Redundant Management Interface • WLC with HA SKU which had never discovered peer • Redundant Port is down • Software version mismatch (WLC which boots up first goes into active mode and the other WLC in Maintenance Mode)' High Availability (SSO) Deployment Guide – Cisco

NEW QUESTION 49

A wireless deployment in a high-density environment is being used by vendors to process credit card payment transactions via handheld mobile scanners. The scanners are having problems roaming between access points in the environment. Which feature on the wireless controller should have been incorporated in the design?

- A. RX SOP
- B. 802.11w
- C. AP Heartbeat Timeout
- D. Application Visibility Control

Answer: A

Explanation:

https://www.cisco.com/c/en/us/td/docs/wireless/controller/8-5/configguide/b_cg85/advanced_wireless_tuning.ht

NEW QUESTION 51

Refer to the exhibit.

Name Prefix

Add APs

AP Type

Enable 11n Support ☐

802.11a/n/ac Antenna

802.11b/g/n Antenna

Protocol

Throughput 802.11a/n/ac

802.11b/g/n

Services: ☒ Advanced Options

☒ Data/Coverage

Safety Margin

☒ Voice

Safety Margin

☒ Location

☐ Location with Monitor Mode APs

☐ Demand

☐ Override Coverage Per AP

Per AP Area0 (sq feet)

Total Coverage Area 179312 (sq feet)

Recommended AP Count **74**

Data/Coverage **48**

Voice **48**

Location **59**


Location with Monitor


Mode APs

Demand

Floor Type: Cubes and Walled Offices

Add APs Automatically:
Realize and move the rectangle using the mouse over the desired coverage area, then specify placement criteris. Click "Calculate" to determine the number of APs recommended by NCS. If you are satisfied with the result, press "Apply". APs will be created and automatically positioned on the map.





Which two statements about Cisco Prime Infrastructure are true? (Choose two.)

- A. It presents the recommended number of APs for the selected coverage area based on the selections made.
- B. Planning mode requires a special license in Cisco Prime Infrastructure.
- C. It shows the map editor feature in Cisco Prime Infrastructure.
- D. Controllers must be synchronized with Cisco Prime Infrastructure for planning mode to work.
- E. It shows the planning mode feature in Cisco Prime Infrastructure.

Answer: DE

Explanation:

Use Planning Mode to Calculate Access Point Coverage Requirements

Prime Infrastructure planning mode lets you calculate the number of access points (APs) required to cover an area by placing fictitious APs on a map and viewing the coverage area. Based on the throughput specified for each protocol (802.11a/n or 802.11b/g/n), planning mode calculates the total number of APs required to provide optimum coverage in your network. You can calculate the recommended number and location of APs based on the following criteria:

NEW QUESTION 53

A wireless engineer is using Ekahau site survey to validate that an existing wireless network is operating as expected, which type of survey should be using to identify the end-to-end network performance?

- A. GPS assisted
- B. Spectrum analysis
- C. Passive
- D. Active ping

Answer: B

Explanation:

<https://support.ekahau.com/hc/en-us/articles/115004973067-Spectrum-Analysis-Surveys>

NEW QUESTION 54

A wireless network consultant must assess an existing wireless LAN controller. Which section must the consultant check before replacing the old APs with APs that are IEEE 802.11ac-capable?

- A. number of AP licenses
- B. controller PSU
- C. throughput capacity
- D. software version

Answer: A

Explanation:

<https://www.cisco.com/c/en/us/products/collateral/wireless/catalyst-9100ax-access-points/nb-06-802-11ax-faq-c>

NEW QUESTION 55

Guest anchoring is configured for a newly created SSID for your company. It has been noticed that the mobility tunnels are not up, and that MPING fails from your foreign WLC to the anchor WLC. What is the reason that it is failing?

- A. A rule is needed at the firewall to allow UDP port 16666 for communication to work.
- B. A rule is needed at the firewall to allow UDP port 97 for communication to work.
- C. A rule is needed at the firewall to allow TCP port 97 for communication to work.
- D. A rule is needed at the firewall to allow TCP port 16666 for communication to work.

Answer: A

Explanation:

- UDP 16666 for tunnel control traffic
- IP Protocol 97 for user data traffic
- UDP 161 and 162 for SNMP

NEW QUESTION 56

A technician connects a Cisco Aironet 3700 Series access point to a switch and realizes that the AP is coming up with 3x3 MIMO. Which reason explains this behavior?

- A. A redundant power supply is unavailable on the switch.
- B. The switch is 802.3af capable.
- C. The AP is getting power from a power injector.
- D. The switch is PoE+ capable.

Answer: D

Explanation:

The AP 3700 with integrated 802.11ac wave-1 radio is designed to run from Power over Ethernet (PoE) sources, local power, or via mid-span or power injector. If the AP 3700 is powered by PoE and the source is 802.3af (15.4 Watts) the AP will come up and fully function in a 3x3:3 mode; for enhanced performance additional power sources such as 802.3at, enhanced PoE, Cisco PoE Injector-4, or local power may be used. With additional power (greater than 15.4W) supplied, the 3700 will shift into the 4x4:3 mode.

The big difference between 802.3af (PoE) and 802.3at (PoE+) is the amount of power delivered over each standard.

NEW QUESTION 57

Clustering Cisco WLCs into a single RF group enables the RRM algorithms to scale beyond the capabilities of a single Cisco WLC. How many WLC and APs in an RF group can the controller software scale up to in WLC release 8.9 depending on the platform?

- A. up to 20 WLCs and 1000 APs
- B. up to 20 WLCs and 3000 APs
- C. up to 20 WLCs and 4000 APs
- D. up to 20 WLCs and 6000 APs

Answer: D

Explanation:

- Controller software supports up to 20 controllers and 6000 access points in an RF group.

https://www.cisco.com/c/en/us/td/docs/wireless/controller/8-9/config-guide/b_cg89/radio_resource_managemen

NEW QUESTION 61

Which CLI command does an engineer use to validate that the redundancy peer of a Stateful Switchover pair of controllers is up and connected?

- A. rping

- B. ping
- C. eping
- D. mping

Answer: B

Explanation:

Both the WLCs in HA setup keep track of gateway reachability. The Active WLC sends an Internet Control Message Protocol (ICMP) ping to the gateway using the Management IP address as the source,

NEW QUESTION 64

A customer has noticed that Client Band Select is enabled and no clients are utilizing the 5 GHz band. Which three parameters must be met to ensure that wireless clients use the 5 GHz band? (Choose three.)

- A. Ensure that channel bonding is enabled on the WLAN.
- B. Ensure that the co-channel interference has not exceeded -85 dBm.
- C. Ensure that the UNII-2 extended channels are enabled on the 802.11a radios.
- D. Ensure that the client is receiving RSSI above the minimum band select RSSI threshold.
- E. Ensure that the client is dual-band capable.
- F. Ensure that the WLAN has 802.11a enabled.

Answer: CEF

Explanation:

For 802.11a, countries are moving to open the frequency range 5.250–5.350 GHz (UNII-2).

The 5 GHz band in which 802.11a operates is divided into several different sections.

https://www.cisco.com/c/en/us/td/docs/solutions/Enterprise/Mobility/emob41dg/emob41dg-wrapper/ch3_WLA

NEW QUESTION 66

A network engineer is configuring high availability on an access point. What is the maximum number of controllers that can be configured?

- A. 1
- B. 2
- C. 3
- D. 4

Answer: B

Explanation:

The N+1 HA architecture provides redundancy for controllers across geographically separate data centers with low cost of deployment.

So max 2 will be supported on an AP.

NEW QUESTION 67

Which UDP port numbers are used for exchange mobility packets in an AireOS wireless deployment?

- A. UDP 16666 for control plane, EoIP (IP protocol 97) for data plane
- B. UDP 16668 for control plane, UDP 16667 for data plane
- C. UDP 16667 for control plane, UDP 16666 for data plane
- D. UDP 16666 for control plane, UDP 16667 for data plane

Answer: D

Explanation:

- Enable these UDP ports for Mobility traffic:

- 16666 - Secured Mode
- 16667 - Unsecured Mode

NEW QUESTION 70

A wireless engineer is hired to design a network for a technology company. The company campus has four buildings and a warehouse with access points that provide full wireless coverage as well as a pair of WLCs located in the core of the network. Which type of wireless architecture is being used?

- A. unified deployment
- B. autonomous deployment
- C. centralized deployment
- D. distributed deployment

Answer: C

Explanation:

Centralized – Works across APs and WLCs in the same Mobility group

NEW QUESTION 74

A company wants to replace its existing PBX system with a new VoIP System that will include wireless IP phones. The CIO has concerns about whether the company's existing wireless network can support the new system. Which tool in Cisco Prime can help ensure that the current network will support the new phone system?

- A. Location Readiness
- B. Site Calibration
- C. Map Editor
- D. Voice Readiness

Answer: D

Explanation:

The VoWLAN Readiness (voice readiness) tool allows you to check the RF coverage to determine if it is sufficient for your voice needs.

NEW QUESTION 77

A medium-sized hospitality company with 50 hotels needs to upgrade the existing WLAN in each hotel to 802.11n. During the site surveys for each hotel, what needs to be taken into consideration when determining the locations for each AP?

- A. Selecting locations that are easily accessed so maintenance and upgrades can be performed quickly.
- B. Selecting AP locations where power is already available.
- C. Selecting APs that can be hidden in ceiling panels to provide a secure and clean aesthetic look.
- D. Selecting locations that make visual assessment of the AP operation easy.

Answer: B

NEW QUESTION 82

An engineer at a global enterprise organization must ensure that a mesh deployment has the highest number of channels available to the backhaul, regardless of region deployed, which design meets this requirement?

- A. one controller per continent
- B. one controller per country code
- C. redundant controllers in the most restrictive regulatory domain
- D. redundant controllers in the least restrictive regulatory domain

Answer: B

Explanation:

AP regulatory domain is set when shipped, this can't be changed. Country codes are changed manually on the WLC, not the regulatory domain. The country set must be in the regulatory domain of any associated APs. There is no setting for continent.

NEW QUESTION 84

A high-density wireless network is designed. Which Cisco WLC configuration setting must be incorporated in the design to encourage clients to use the 5 GHz spectrum?

- A. RRM
- B. Cisco centralized key management
- C. Band select
- D. Load balancing

Answer: C

NEW QUESTION 85

An engineer is designing a wireless network that will support many different types of wireless clients. When conducting the survey, which client must be used to ensure a consistent experience for all of the wireless clients?

- A. the client that has the highest RF properties
- B. the client that is used most by the company
- C. the client that is used least by the company
- D. the client with the worst RF characteristics

Answer: B

Explanation:

With the proliferation of clients with varying wireless capabilities, it is important to survey for the 'worst' clients in order to ensure a consistent experience across all your clients once your wireless network is in production.

https://documentation.meraki.com/MR/WiFi_Basics_and_Best_Practices/Conducting_Site_Surveys_with_MR_

NEW QUESTION 86

A customer has restricted the AP and antenna combinations for a design to be limited to one model integrated antenna AP for carpeted spaces and one model external antenna AP with high gain antennas for industrial, maintenance, or storage areas. When moving between a carpeted area to an industrial area, the engineer forgets to change survey devices and surveys several APs. Which strategy will reduce the negative impact of the design?

- A. Resurvey and adjust the design.
- B. Deploy unsurveyed access points to the design.
- C. Deploy the specified access points per area type.
- D. Increase the Tx power on incorrectly surveyed access points.

Answer: A

NEW QUESTION 91

A wireless engineer is utilizing the voice readiness tool in Cisco Prime for a customer that wants to deploy Cisco IP phones. Which dBm range is the network inspected against?

- A. -78 to -65 dBm
- B. -72 to -67 dBm
- C. -85 to -65 dBm
- D. -85 to -67 dBm

Answer: D

Explanation:

Default voice minimum RSSI is -75 dBm. but cisco recommend to get RSSI better than -67 dBm.

https://www.cisco.com/c/en/us/td/docs/net_mgmt/prime/infrastructure/34/user/guide/bk_CiscoPrimeInfrastructu minimum is -90 and maximum is -67 for IP phone

NEW QUESTION 94

A wireless engineer is performing a post verification of a wireless network. Which two metrics does the engineer verify to ensure that the wireless network can support voice services? (Choose two.)

- A. The coverage area must have a noise floor that does not exceed -87 dBm.
- B. The client device must have at least an -67 dBm RSSI.
- C. The rate of retransmitted packets must be 15 percent or below.
- D. The rate of retransmitted packets must be 20 percent or below.
- E. The client device must have at least an -65 dBm RSSI.

Answer: BC

Explanation:

1. The optimal VoWLAN Cell Edge recommendation is -67 dBm.
5. Retransmissions should be kept under 20 percent.

NEW QUESTION 99

A wireless engineer is designing a wireless network to support real-time applications over wireless. Which IEEE protocol must the engineer enable on the WLC so that the number of packets that are exchanged between an access point and client are reduced and fast roaming occurs?

- A. 802.11w
- B. 802.11r
- C. 802.11i
- D. 802.11k

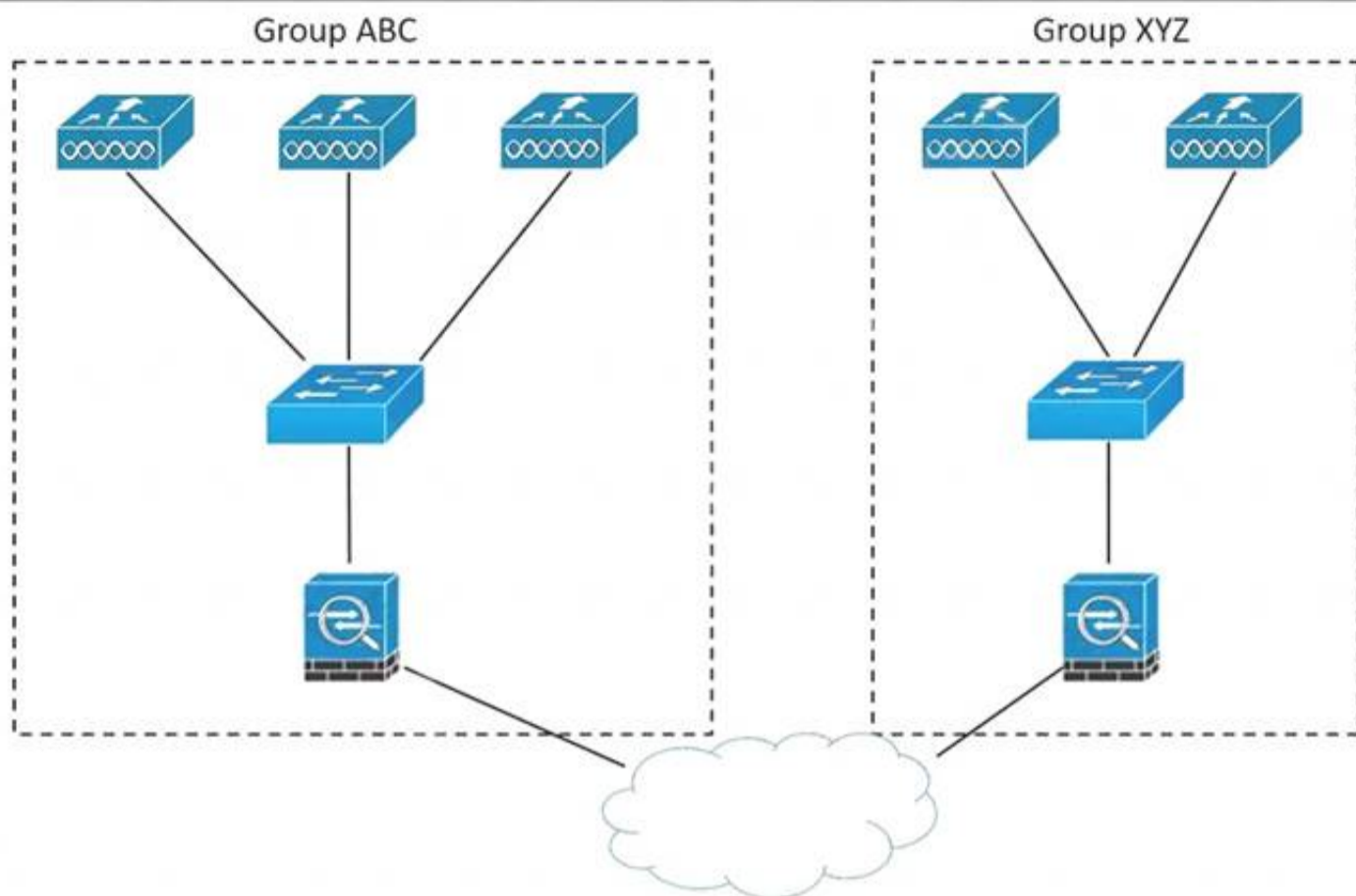
Answer: D

Explanation:

802.11r reduces the number of packets that are exchanged between the client and an AP. The client preauthenticates to the AP it will roam to before actually roaming. This means the roam itself occurs faster because the AP already has the client authentication credentials cached, resulting in fewer packets required between the client and the AP.

NEW QUESTION 104

Refer to the exhibit.



An enterprise has offices spread around the globe. The APs are connected to different controllers installed in separate datacenters. The IT team wants to allow clients to roam from controllers in group ABC to controllers in group XYZ. Which feature must be incorporated in the design to accomplish this task?

- A. switch peer group
- B. workgroup bridge
- C. mDNS gateway
- D. mobility lists

Answer: D

NEW QUESTION 108

An engineer is designing a wireless network to support high availability. The network will need to support the total number of APs and client SSO. Live services should continue to work without interruption during the failover. Which two requirements need to be incorporated into the design to meet these needs? (Choose two.)

- A. redundant WLC
- B. controller high availability pair with one of the WLCs having a valid AP count license
- C. 10 sec RTT
- D. back-to-back direct connection between WLCs
- E. WLC 7.5 code or more recent

Answer: BD

Explanation:

https://www.cisco.com/c/en/us/td/docs/wireless/controller/technotes/7-5/High_Availability_DG.html#pgfId

NEW QUESTION 111

An engineer is conducting a Layer 2 site survey. Which type of client must the engineer match to the survey?

- A. best client available
- B. phone client
- C. normal client
- D. worst client available

Answer: D

Explanation:

<https://www.cisco.com/c/en/us/support/docs/wireless/5500-series-wireless-controllers/116057-site-survey-g>

NEW QUESTION 113

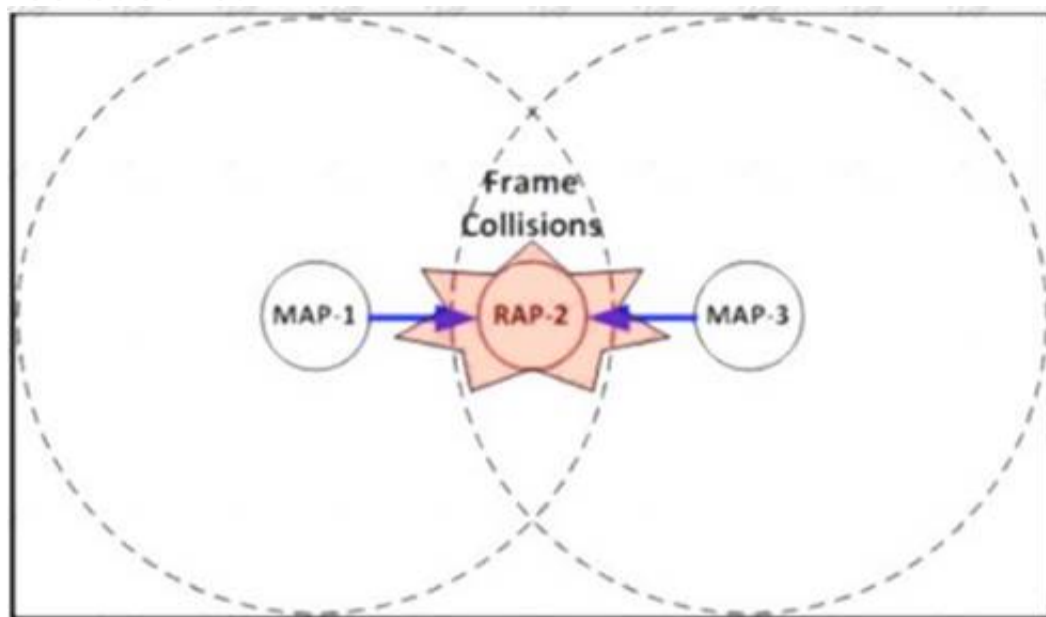
The wireless team must configure a new voice SSID for optimized roaming across multiple WLCs with Cisco 8821 phones. Which two settings accomplish this goal? (Choose two.)

- A. Configure mobility groups between WLCs.
- B. Use Cisco Centralized Key Management for authentication.
- C. Configure AP groups between WLCs.
- D. Configure AVC profile on new SSID.
- E. Use AVC to tag traffic voice traffic as best effort.

Answer: AB

NEW QUESTION 115

Refer to the exhibit.



During a post Mesh deployment survey, an engineer notices that frame collisions occur when MAP-1 and MAP-3 talk to RAP-2 Which type of issue does the engineer need to address in the design?

- A. co-channel interference
- B. backhaul latency
- C. hidden node
- D. exposed node

Answer: C

Explanation:

<https://www.cisco.com/en/US/docs/solutions/Enterprise/Mobility/emob30dg/WiMesh.pdf>

NEW QUESTION 118

Why is 802.11a connectivity reduced in an X-ray room?

- A. X-rays create significant non-Wi-Fi interference on the 802.11a band.
- B. X-rays impact the 802.11a UNII-2 channels that cause access points to dynamically change channels.
- C. X-rays within these rooms cause multipath issues.
- D. X-ray rooms exhibit increased signal attenuation.

Answer: A

Explanation:

portable X-ray machines, sending high-resolution images, sometimes in real time, echography machines, and electrocardiography [ECG] machines). These devices may also use the same spectrum as Wi-Fi but with other protocols and, therefore, become sources of interference for your system.

NEW QUESTION 120

.....

Thank You for Trying Our Product

We offer two products:

1st - We have Practice Tests Software with Actual Exam Questions

2nd - Questions and Answers in PDF Format

300-425 Practice Exam Features:

- * 300-425 Questions and Answers Updated Frequently
- * 300-425 Practice Questions Verified by Expert Senior Certified Staff
- * 300-425 Most Realistic Questions that Guarantee you a Pass on Your First Try
- * 300-425 Practice Test Questions in Multiple Choice Formats and Updates for 1 Year

100% Actual & Verified — Instant Download, Please Click
[Order The 300-425 Practice Test Here](#)