

MS-100 Dumps

Microsoft 365 Identity and Services

<https://www.certleader.com/MS-100-dumps.html>



NEW QUESTION 1

- (Exam Topic 1)

You company has a Microsoft Azure Active Directory (Azure AD) tenant that contains the users shown in the following table.

The tenant includes a security group named Admin1. Admin1 will be used to manage administrative accounts. You need to identify which users can perform the following administrative tasks:

- ▶ Create guest user accounts.
- ▶ Add User3 to Admin1.

Which users should you identify for each task? To answer, select the appropriate options in the answer area. NOTE: Each correct selection is worth one point.

Create guest user accounts:	<div><div>▼</div><div>User4 only</div><div>User2 only</div><div>User3 only</div><div>User2 and User3 only</div><div>User1, User2 and User3 only</div><div>User1, User2, User3, and User4</div></div>
Add User3 to Admin1:	<div><div>▼</div><div>User4 only</div><div>User2 only</div><div>User3 only</div><div>User2 and User3 only</div><div>User1, User2 and User3 only</div><div>User1, User2, User3, and User4</div></div>

- A. Mastered
- B. Not Mastered

Answer: A

Explanation:

References:

<https://docs.microsoft.com/en-us/azure/active-directory/users-groups-roles/directory-assign-admin-roles>


NEW QUESTION 2


- (Exam Topic 1)

You have a Microsoft 365 subscription that contains a guest user named User1. User1 is assigned the User administrator role.

You have a Microsoft Azure Active Directory (Azure AD) tenant named contoso.com. Contoso.com is configured as shown in the following exhibit.

External collaboration settings

 Save

 Discard

Guest users permissions are limited ⓘ

Yes

No

Admins and users in the guest inviter role can invite ⓘ

Yes

No

Members can invite ⓘ

Yes

No

Guests can invite ⓘ

Yes

No

Collaboration restrictions

☒ Allow invitations to be sent to any domain (most inclusive)

☐ Deny invitations to the specified domains

☐ Allow invitations only to the specified domains (most restrictive)

Use the drop-down menus to select the answer choice that completes each statement based on the information presented in the graphic.
NOTE: Each correct selection is worth one point.

User1 can [answer choice].

open the Azure portal only

open the Azure portal and view users only

open the Azure portal, view users, and create new guest users only

open the Azure portal, view users, create new users, and create new guest users

All other guest users can [answer choice].

open the Azure portal only

open the Azure portal and view users only

open the Azure portal, view users, and create new guest users only

open the Azure portal, view users, create new users, and create new guest users

- A. Mastered
- B. Not Mastered

Answer: A

Explanation:

References:

<https://docs.microsoft.com/en-us/azure/active-directory/b2b/delegate-invitations>

<https://docs.microsoft.com/en-us/azure/active-directory/fundamentals/users-default-permissions>

NEW QUESTION 3

- (Exam Topic 1)

Your company recently purchased a Microsoft 365 subscription.

You enable Microsoft Azure Multi-Factor Authentication (MFA) for all 500 users in the Azure Active Directory (Azure AD) tenant.

You need to generate a report that lists all the users who completed the Azure MFA registration process. What is the best approach to achieve the goal? More than one answer choice may achieve the goal. Select the BEST answer.

- A. From Azure Cloud Shell, run the Get-AzureADUser cmdlet.
- B. From Azure Cloud Shell, run the Get-MsolUser cmdlet
- C. From the Azure Active Directory admin center, use the MFA Server blade.
- D. From the Azure Active Directory admin center, use the Risky sign-ins blade.

Answer: B

Explanation:

References:

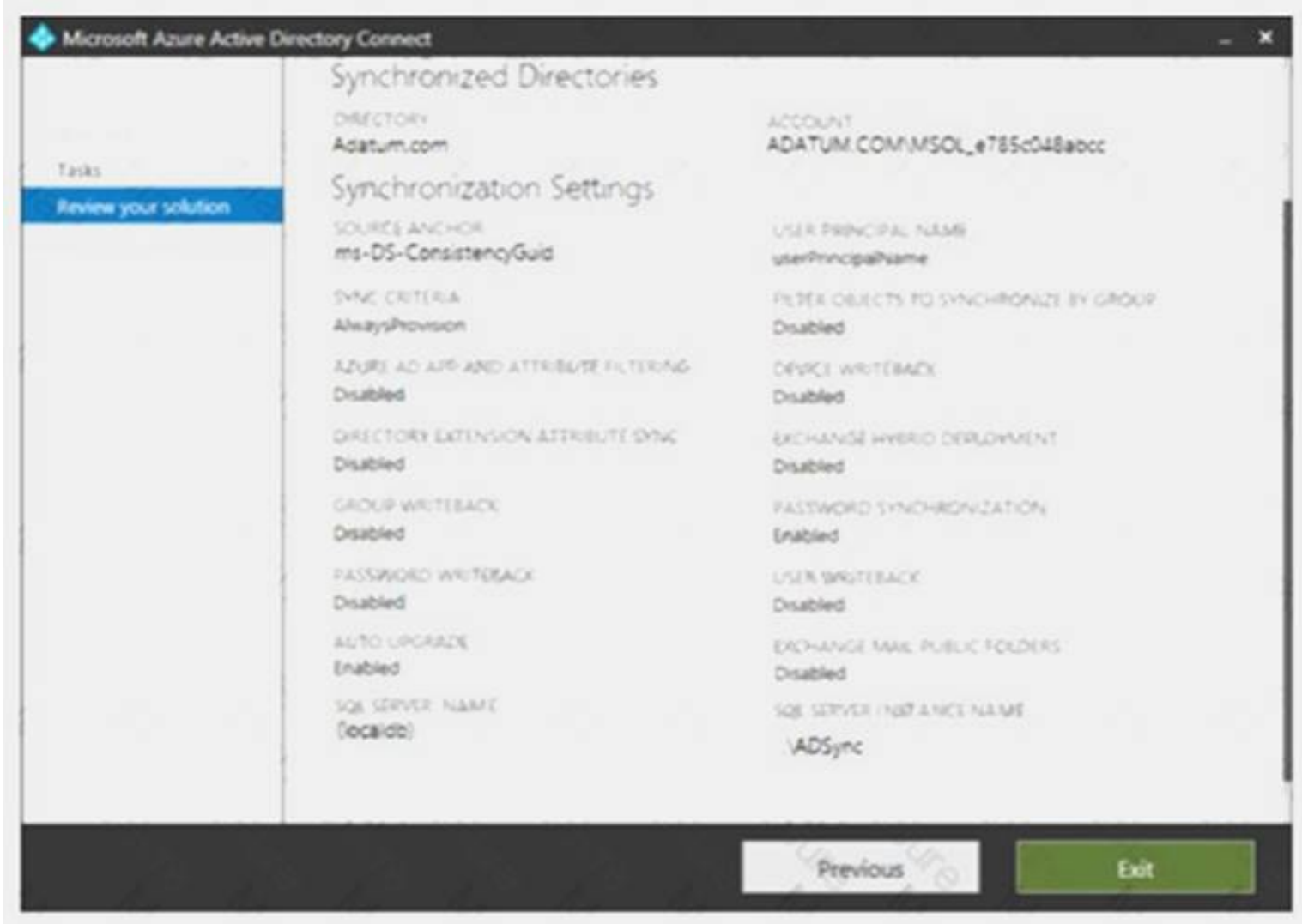
<https://docs.microsoft.com/en-us/azure/active-directory/authentication/howto-mfa-reporting>

NEW QUESTION 4

- (Exam Topic 1)

Your company has a hybrid deployment of Microsoft 365.

An on-premises user named User1 is synced to Microsoft Azure Active Directory (Azure AD). Azure AD Connect is configured as shown in the following exhibit.



Use the drop-down menus to select the answer choice that completes each statement based on the information presented in the graphic.

NOTE: Each correct selection is worth one point.

User1 [answer choice].

cannot change her password from any Microsoft portals
can change her password by using self-service password reset feature only
an change her password from the Office 365 admin center only

If the password for User1 is changed in Active Directory, [answer choice].

the password will be synchronized to Azure AD
a new randomly generated password will be assigned to User1
the password in Azure AD will be unchanged

- A. Mastered
- B. Not Mastered

Answer: A

Explanation:

User1 [answer choice].

cannot change her password from any Microsoft portals
can change her password by using self-service password reset feature only
an change her password from the Office 365 admin center only

If the password for User1 is changed in Active Directory, [answer choice].

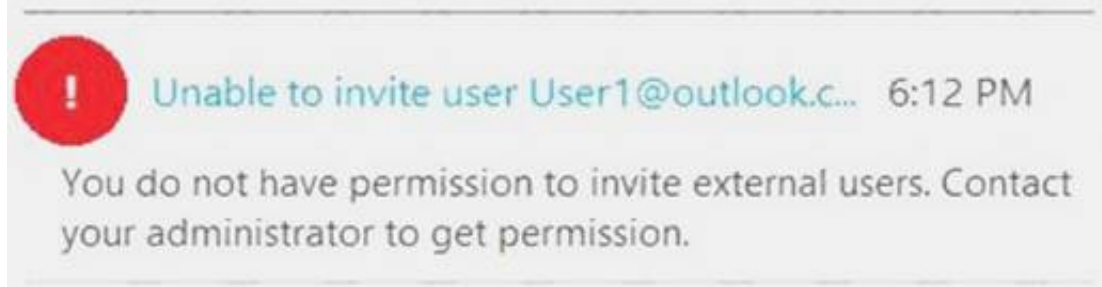
the password will be synchronized to Azure AD
a new randomly generated password will be assigned to User1
the password in Azure AD will be unchanged

NEW QUESTION 5

- (Exam Topic 1)

You have a Microsoft Azure Active Directory (Azure AD) tenant named contoso.onmicrosoft.com. An external user has a Microsoft account that uses an email address of user1@outlook.com.

An administrator named Admin1 attempts to create a user account for the external user and receives the error message shown in the following exhibit.



You need to ensure that Admin1 can add the user.

What should you do from the Azure Active Directory admin center?

- A. Add a custom domain name named outlook.com.
- B. Modify the Authentication methods.
- C. Modify the External collaboration settings.
- D. Assign Admin1 the Security administrator role.

Answer: C

NEW QUESTION 6

- (Exam Topic 1)

Your company has a Microsoft Office 365 subscription that contains the groups shown in the following table.

Name	Members
Group1	User1, User2
Group2	User3

You have the licenses shown in the following table.

License	Included service	Assigned to
Microsoft 365	Microsoft Exchange Online	Group1
Microsoft 365	Microsoft SharePoint Online	User1, User2, User3

Another administrator removes User1 from Group1 and adds Group2 to Group1.

For each of the following statements, select Yes if the statement is true. Otherwise, select No. NOTE: Each correct selection is worth one point.

Statements	Yes	No
User1 is licensed for SharePoint Online.	<input type="radio"/>	<input type="radio"/>
User2 is licensed for SharePoint Online.	<input type="radio"/>	<input type="radio"/>
User3 is licensed for SharePoint Online.	<input type="radio"/>	<input type="radio"/>

- A. Mastered
- B. Not Mastered

Answer: A

Explanation:

The users are assigned SharePoint licenses directly. Their group memberships have no effect on licenses directly assigned to the user accounts.

NEW QUESTION 7

- (Exam Topic 1)

You have a Microsoft Azure Active Directory (Azure AD) tenant named contoso.com. You add an app named App1 to the enterprise applications in contoso.com.

You need to configure self-service for App1. What should you do first?

- A. Assign App1 to users and groups.
- B. Add an owner to App1.
- C. Configure the provisioning mode for App1.
- D. Configure an SSO method for App1.

Answer: A

Explanation:

References:

<https://docs.microsoft.com/en-us/azure/active-directory/manage-apps/manage-self-service-access>

NEW QUESTION 8

- (Exam Topic 1)

Your company has a main office and 20 branch offices in North America and Europe. Each branch office connects to the main office by using a WAN link. All the offices connect to the Internet and resolve external host names by using the main office connections.

You plan to deploy Microsoft 365 and to implement a direct Internet connection in each office.

You need to recommend a change to the infrastructure to provide the quickest possible access to Microsoft 365 services.

What is the best recommendation to achieve the goal? More than one answer choice may achieve the goal. Select the BEST answer.

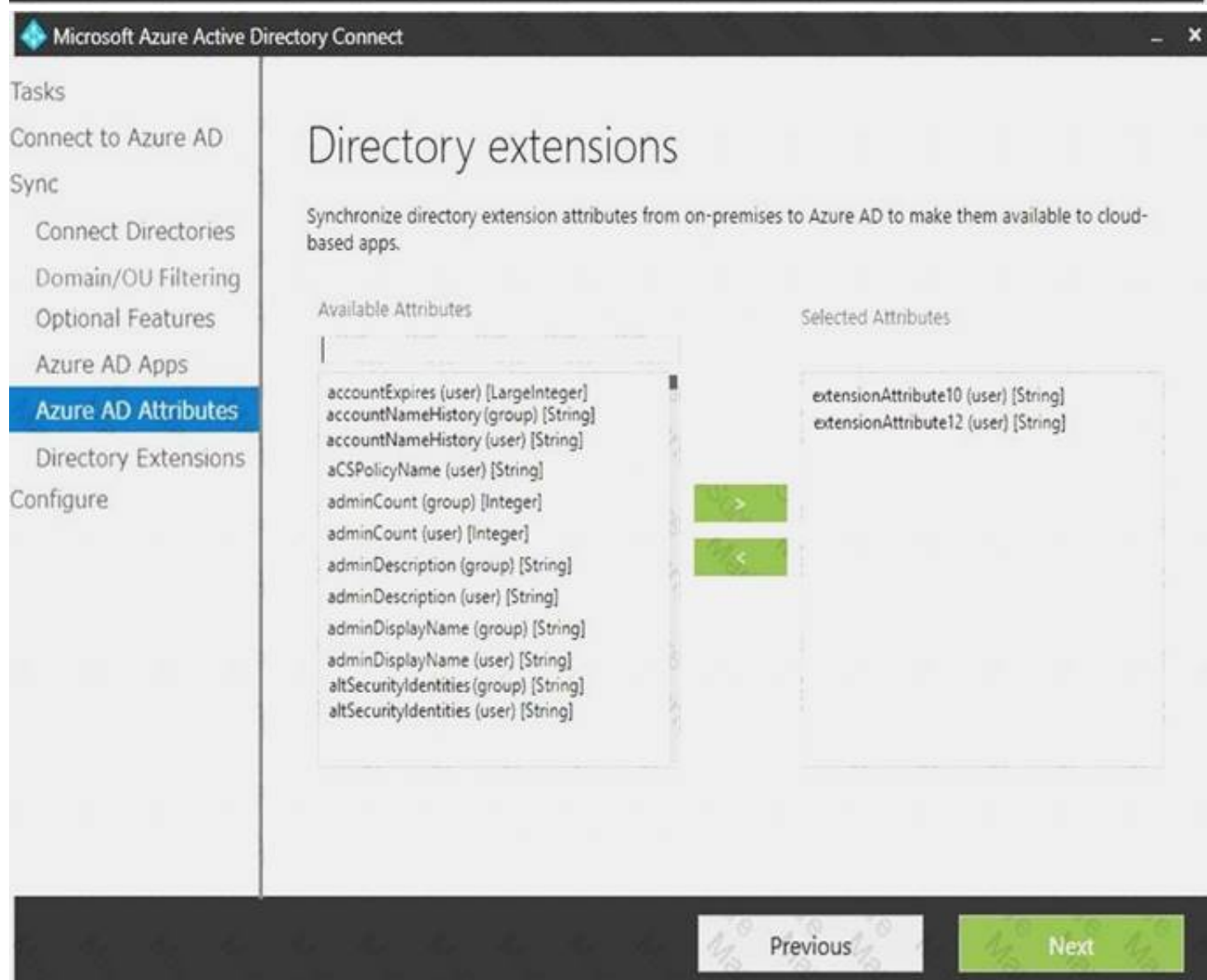
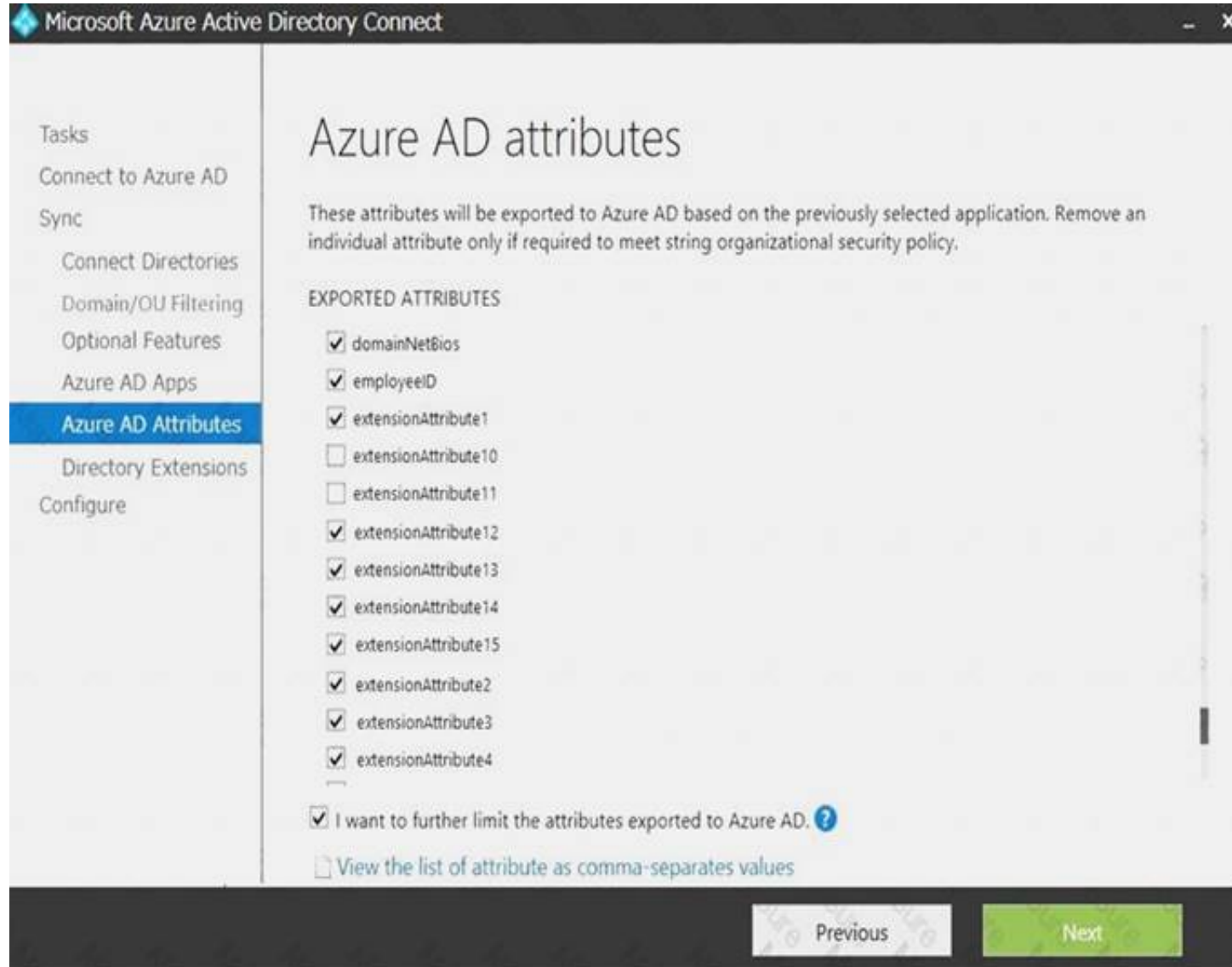
- A. For all the client computers in the branch offices, modify the MTU setting by using a Group Policy object (GPO).
- B. In each branch office, deploy a proxy server that has user authentication enabled.
- C. In each branch office, deploy a firewall that has packet inspection enabled.
- D. In each branch office, configure name resolution so that all external hosts are redirected to public DNS servers directly.

Answer: D

NEW QUESTION 9

- (Exam Topic 1)

Your network contains an on-premises Active Directory domain that is synced to Microsoft Azure Active Directory (Azure AD) as shown in the following two exhibits.



You create a user named User1 in Active Directory as shown in the following exhibit.

For each of the following statements, select Yes if the statement is true. Otherwise, select No. NOTE: Each correct selection is worth one point.

A. Mastered
B. Not Mastered

Answer: A

Explanation:

NEW QUESTION 10

- (Exam Topic 1)

Your company has a Microsoft 365 subscription.

You plan to move several archived PST files to Microsoft Exchange Online mailboxes. You need to create an import job for the PST files.

Which three actions should you perform before you create the import job? Each correct answer presents part of the solution.

NOTE: Each correct selection is worth one point.

- Create a Microsoft Azure Storage account.
- From Security & Compliance, retrieve the SAS key.
- Run `azcopy.exe` to copy the PST files to Microsoft Azure Storage
- Use Microsoft Azure Storage Explorer to copy the PST files to Azure Storage.

E. Create a PST import mapping file.

Answer: BCE

Explanation:

References:

<https://docs.microsoft.com/en-us/office365/securitycompliance/use-network-upload-to-import-pst-files>

NEW QUESTION 10

- (Exam Topic 1)

Note: This question is part of a series of questions that present the same scenario. Each question in the series contains a unique solution that might meet the stated goals. Some question sets might have more than one correct solution, while others might not have a correct solution.

After you answer a question in this section, you will NOT be able to return to it. As a result these questions will not appear in the review screen.

Your company has a main office and three branch offices. All the branch offices connect to the main office by using a WAN link. The main office has a high-speed Internet connection. All the branch offices connect to the Internet by using the main office connection.

Users use Microsoft Outlook 2016 to connect to 4 Microsoft Exchange Server mailbox hosted in the main office.

The users report that when the WAN link in their office becomes unavailable, they cannot access their mailbox.

You create a Microsoft 365 subscription, and then migrate all the user data to Microsoft 365.

You need to ensure that all the users can continue to use Outlook to receive email messages if a WAN link fails.

Solution: For each device, you configure an additional Outlook profile that uses IMAP. Does this meet the goal?

A. Yes


B. NO

Answer: B

NEW QUESTION 12

- (Exam Topic 1)

You have a Microsoft Azure Active Directory (Azure AD) tenant named contoso.com that includes a user named User1.

You enable multi-factor authentication for contoso.com and configure the following two fraud alert settings:  Set Allow users to submit fraud alerts: On

 Automatically block users who report fraud: On

You need to instruct the users in your organization to use the fraud reporting features correctly. What should you tell the users to do? To answer, select the appropriate options in the answer area. NOTE: Each correct selection is worth one point.

A user can report fraud on her account by:

<input type="checkbox"/>
<input type="checkbox"/>
<input type="checkbox"/>
<input type="checkbox"/>

If User1 reports fraud on his account, the account will be blocked automatically for:

<input type="checkbox"/>
<input type="checkbox"/>
<input type="checkbox"/>
<input type="checkbox"/>

A. Mastered

B. Not Mastered

Answer: A

Explanation:

References:

<https://docs.microsoft.com/en-us/azure/active-directory/authentication/howto-mfa-mfasettings#fraud-alert>

NEW QUESTION 16

- (Exam Topic 1)

You have an on premises web application that is published by using a URL of <https://app.contoso.local>. You purchase a Microsoft 36S subscription.

Several external users must be able to connect to the web application

You need to recommend a solution for external access to the application. The solution must support multi-factor authentication.

Which two actions should you recommend? Each correct answer presents part of the solution. NOTE: Each correct selection is worth one point.

A. From an on-premises server, install a connector, and then publish the app.

B. From the Azure Active Directory admin center, enable an Application Proxy.

C. From the Azure Active Directory admin center, treat a conditional access policy.

D. From an on premises server, install an Authentication Agent.

E. Republish the web-application by using <http://app.contoso.com>

Answer: AB

Explanation:

References:

<https://docs.microsoft.com/en-us/azure/active-directory/manage-apps/application-proxy-add-on-premises-applic>

NEW QUESTION 17

- (Exam Topic 1)

Your network contains an Active Directory domain named contoso.com. You have a Microsoft 365 subscription.

You have a Microsoft Azure Active Directory (Azure AD) tenant named contoso.onmicrosoft.com. You implement directory synchronization.

The developers at your company plan to build an app named App1. App1 will connect to the Microsoft Graph API to provide access to several Microsoft Office 365 services.

You need to provide the URI for the authorization endpoint that App1 must use. What should you provide?

- A. <https://login.microsoftonline.com/>
- B. <https://contoso.com/contoso.onmicrosoft.com/app1>
- C. <https://login.microsoftonline.com/contoso.onmicrosoft.com/>
- D. <https://myapps.microsoft.com>

Answer: C

NEW QUESTION 21

- (Exam Topic 1)

You have a Microsoft 365 Enterprise E5 subscription.

You need to enforce multi-factor authentication on all cloud-based applications for the users in the finance department.

What should you do?

- A. Create an activity policy.
- B. Create a Sign-in risk policy.
- C. Create a session policy.
- D. Create an app permission policy.

Answer: B

Explanation:

References:

<https://docs.microsoft.com/en-us/azure/active-directory/identity-protection/howto-sign-in-risk-policy>

NEW QUESTION 25

- (Exam Topic 1)

Your company has a Microsoft Azure Active Directory (Azure AD) tenant named contoso.com that includes the users shown in the following table.

Name	Usage location	Membership
User1	United States	Group1, Group2
User2	<i>Not applicable</i>	Group2
User3	<i>Not applicable</i>	Group1
User4	Canada	Group1

Group2 is a member of Group1.

You assign a Microsoft Office 365 Enterprise E3 license to Group1. You need to identify how many Office 365 E3 licenses are assigned. What should you identify?

- A. 1
- B. 2
- C. 3
- D. 4

Answer: C

NEW QUESTION 26

- (Exam Topic 1)

Your on-premises network contains five file servers. The file servers host shares that contain user data. You plan to migrate the user data to a Microsoft 365 subscription.

You need to recommend a solution to import the user data into Microsoft OneDrive. What should you include in the recommendation?

- A. Configure the Migrate of the OneDrive client on your Windows 10 dew
- B. Configure the Sync settings in the OneDrive admin center.
- C. Run the SharePoint Hybrid Configuration Wizard.
- D. Run the SharePoint Migration Tool.

Answer: D

Explanation:

References:

<https://docs.microsoft.com/en-us/sharepointmigration/introducing-the-sharepoint-migration-tool>

NEW QUESTION 27

- (Exam Topic 1)

You have a Microsoft 365 Enterprise subscription.

You create a password policy as shown in the following exhibit.

Use the drop-down menus to select the answer choice that completes each statement based on the information presented in the graphic.
NOTE: Each correct selection is worth one point.

If users are locked out of their account, they have [answer choice].

five sign-in attempts each subsequent minute
one sign-in attempt each subsequent minute
five sign-in attempts every five minutes
one sign-in attempt every five minutes

Users can create a password of [answer choice].

Password11
ContoS01Pa\$\$word
AzureAD!!!111
pa\$\$w0rd

- A. Mastered
- B. Not Mastered

Answer: A

Explanation:

References:

<https://docs.microsoft.com/en-us/azure/active-directory/authentication/concept-password-ban-bad>

NEW QUESTION 32

- (Exam Topic 1)

Your company has an on premises Microsoft Exchange Server 2016 organization and a Microsoft 365 Enterprise subscription. You plan to migrate mailboxes and groups to Exchange Online.

You start a new migration batch.

Users report *low performance when they use the on premises Exchange Server organization. You discover that the migration is causing the slow performance. You need to reduce the impact of the mailbox migration on the end-users. What should you do?

- A. Create a mail flow rule.
- B. Configure back pressure
- C. Modify the migration endpoint setting
- D. Create a throttling policy.

Answer: C

Explanation:

You can reduce the maximum number of concurrent mailbox migrations.

NEW QUESTION 33

- (Exam Topic 1)

Your network contain*, an on-premises Active Directory forest.

You are evaluating the implementation of Microsoft 365 and the deployment of authentication strategy. You need to recommend an authentication strategy that meets the following requirements:

- Allows users to sign in by using smart card-based certificates
- Allows users to connect to on premises and Microsoft 365 services by using SSO Which authentication strategy should you recommend?

- A. password hash synchronization and seamless SSO
- B. federation with Active Directory Federation Services (AD FS)
- C. pass-through authentication and seamless SSO

Answer: B

Explanation:

References:
<https://docs.microsoft.com/en-us/azure/security/azure-ad-choose-authn>

NEW QUESTION 36

- (Exam Topic 1)

Note: This question is part of a series of questions that present the same scenario. Each question in the series contains a unique solution that might meet the stated goals. Some question sets might have more than one correct solution, while others might not have a correct solution.

After you answer a question in this section, you will NOT be able to return to it. As a result, these questions will not appear in the review screen.

Your company has a Microsoft Office 365 tenant.

You suspect that several Office 365 features were recently updated.

You need to view a list of the features that were recently updated in the tenant. Solution: You use Dashboard in Security & Compliance.

Does this meet the goal?

- A. Yes
- B. NO

Answer: B

NEW QUESTION 41

- (Exam Topic 2)

You need to Add the custom domain name* to Office 365. Support the planned changes as quickly as possible.

What should you create to verify the domain names successfully?

- A. three alias (CNAME) record
- B. one text (TXT) record
- C. one alias (CNAME) record
- D. three text (TXT) record

Answer: D

NEW QUESTION 45

- (Exam Topic 2)

To which Azure AD role should you add User4 to meet the security requirement?

- A. Password administrator
- B. Global administrator
- C. Security administrator
- D. Privileged role administrator

Answer: B

NEW QUESTION 48

- (Exam Topic 2)

You need to meet the security requirements for User3. The solution must meet the technical requirements. What should you do? To answer, select the appropriate options in the answer area.

NOTE: Each correct selection is worth one point.

Tool to use to add User3 to the role:

	▼
the Azure portal	
the Exchange admin center	
the Microsoft 365 admin center	
the Security & Compliance admin center	

Role to assign to User3:

	▼
Cloud application administrator	
Global administrator	
Organization Management	
Security Administrator	

- A. Mastered
- B. Not Mastered

Answer: A

Explanation:

References:

<https://docs.microsoft.com/en-us/office365/SecurityCompliance/eop/feature-permissions-in-eop>

NEW QUESTION 49

- (Exam Topic 3)

You need to create the UserLicenses group. The solution must meet the security requirements.

Which group type and control method should you use? To answer, select the appropriate options in the answer area.

NOTE: Each correct selection is worth one point.

Answer Area

Group type:

▼
Distribution list
Office 365 group
Security group

Control method:

▼
a conditional access policy
a retention policy
an access review
an alert policy

- A. Mastered
- B. Not Mastered

Answer: A

Explanation:

Answer Area

Group type:

▼
Distribution list
Office 365 group
Security group

Control method:

▼
a conditional access policy
a retention policy
an access review
an alert policy

NEW QUESTION 52

- (Exam Topic 3)

Which migration solution should you recommend for Project1?

- A. From Exchange Online PowerShell, run the New-MailboxImportRequest cmdlet.
- B. From Exchange Online PowerShell, run the New-MailboxExportRequest cmdlet.
- C. From the Microsoft 365 admin center, start a data migration and click Upload PSST as the data service.
- D. From the Exchange admin center, start a migration and select Remote move migration

Answer: D

NEW QUESTION 53

- (Exam Topic 3)

You are evaluating the required processes for Project1.

You need to recommend which DNS record must be created before you begin the project. Which DNS record should you recommend?

- A. mail exchanger (MX)
- B. alias (CNAME)
- C. host (A)
- D. host (AAA)

Answer: A

NEW QUESTION 54

.....

Thank You for Trying Our Product

* 100% Pass or Money Back

All our products come with a 90-day Money Back Guarantee.

* One year free update

You can enjoy free update one year. 24x7 online support.

* Trusted by Millions

We currently serve more than 30,000,000 customers.

* Shop Securely

All transactions are protected by VeriSign!

100% Pass Your MS-100 Exam with Our Prep Materials Via below:

<https://www.certleader.com/MS-100-dumps.html>