



Fortinet

Exam Questions NSE6_FWF-6.4

Fortinet NSE 6 - Secure Wireless LAN 6.4

About ExamBible

[Your Partner of IT Exam](#)

Found in 1998

ExamBible is a company specialized on providing high quality IT exam practice study materials, especially Cisco CCNA, CCDA, CCNP, CCIE, Checkpoint CCSE, CompTIA A+, Network+ certification practice exams and so on. We guarantee that the candidates will not only pass any IT exam at the first attempt but also get profound understanding about the certificates they have got. There are so many alike companies in this industry, however, ExamBible has its unique advantages that other companies could not achieve.

Our Advances

* 99.9% Uptime

All examinations will be up to date.

* 24/7 Quality Support

We will provide service round the clock.

* 100% Pass Rate

Our guarantee that you will pass the exam.

* Unique Gurantee

If you do not pass the exam at the first time, we will not only arrange FULL REFUND for you, but also provide you another exam of your claim, ABSOLUTELY FREE!

NEW QUESTION 1

Refer to the exhibits.

Exhibit A

```
53836.574 xx:xx:xx:xx:xx:xx <ih> IEEE 802.11 mgmt::assoc_req <==
xx:xx:xx:xx:xx:xx ws (0-192.168.5.98:5246) vap Wireless rId 1 wId2
yy:yy:yy:yy:yy:yy

53836.574 xx:xx:xx:xx:xx:xx <ih> xx:xx:xx:xx:xx:xx sta =
0x6311c88, sta->flags = 0x00000001, auth_alg = 0, hapd->splitMac: 1

53836.575 xx:xx:xx:xx:xx:xx <ih> IEEE 802.11 mgmt::assoc_resp <==
xx:xx:xx:xx:xx:xx ws (0-192.168.5.98:5246) vap Wireless rId 1 wId2
yy:yy:yy:yy:yy:yy

53836.575 xx:xx:xx:xx:xx:xx <ih> IEEE 802.11 mgmt::assoc_resp <==
xx:xx:xx:xx:xx:xx ws (0-192.168.5.98:5246) vap Wireless rId 1 wId2
yy:yy:yy:yy:yy:yy

53836.575 xx:xx:xx:xx:xx:xx <dc> STA add xx:xx:xx:xx:xx:xx vap
Wireless ws (0-192.168.5.98:5246) rId 1 wId2 bssid
yy:yy:yy:yy:yy:yy NON-AUTH band 0x10 mimo 2*2

53836.575 xx:xx:xx:xx:xx:xx <cc> STA_CFG_REQ(10) sta
xx:xx:xx:xx:xx:xx add ==> ws (0-192.168.5.98:5246) rId 1 wId 2

53836.576 xx:xx:xx:xx:xx:xx <cc> STA add xx:xx:xx:xx:xx:xx vap
Wireless ws (0-192.168.5.98:5246) rId 1 wId 2 yy:yy:yy:yy:yy:yy sec
WPA2 PERSONAL auth 0

53836.576 xx:xx:xx:xx:xx:xx cwAcStaRbtAdd: I2C_STA_ADD insert sta
xx:xx:xx:xx:xx:xx 192.168.5.98/1/2/1

53836.577 xx:xx:xx:xx:xx:xx <cc> STA_CFG_RESP(10) sta xx:xx:xx:xx:xx:xx
<== ws (0-192.168.5.98:5246) rc 0 (Success)

64318.579 xx:xx:xx:xx:xx:xx <eh> RADIUS message (type=0) ==> RADIUS
Server code=1 (Access-Request) id=9 len=214

64318.579 xx:xx:xx:xx:xx:xx <eh> send 1/4 msg of 4-Way
Handshake

64318.580 xx:xx:xx:xx:xx:xx <eh> send IEEE 802.1X ver=2 type=3
(EAPOL_KEY) data len=95 replay cnt 1

64813.580 xx:xx:xx:xx:xx:xx <eh> IEEE 802.1X (EAPOL99B) ==>
xx:xx:xx:xx:xx:xx ws (0-192.168.5.98:5246) rId 1 wId 2
yy:yy:yy:yy:yy:yy

64318.582 xx:xx:xx:xx:xx:xx <eh> RADIUS message (type=0) <== RADIUS
Server code=2 (Access-Accept) id=9 len=114

53836.582 xx:xx:xx:xx:xx:xx <dc> STA chg xx:xx:xx:xx:xx:xx vap
Wireless ws (0-192.168.5.98:5246) rId 1 wId 2 bssid
yy:yy:yy:yy:yy:yy Auth:allow
```

Exhibit B

```

64813.583 xx:xx:xx:xx:xx:xx <eh> IEEE 802.1X (EAPOL 121B) <==
xx:xx:xx:xx:xx:xx ws (0-192.168.5.98:5246) rId 1 wId2
yy:yy:yy:yy:yy:yy

64813.583 xx:xx:xx:xx:xx:xx <eh>      recv IEEE 802.1X ver=1 type=3
(EAPOL_KEY) data len=117

64813.583 xx:xx:xx:xx:xx:xx <eh>      recv EAPOL-Key 2/4 Pairwise
replay cnt 1

64813.583 xx:xx:xx:xx:xx:xx <eh>      send 3/4 msg of 4-Way
Handshake

64813.584 xx:xx:xx:xx:xx:xx <eh>      send IEEE 802.1X ver=2 type=3
(EAPOL_KEY) data len=151 replay cnt 2

64813.584 xx:xx:xx:xx:xx:xx <eh> IEEE 802.1X (EAPOL 155B) ==>
xx:xx:xx:xx:xx:xx ws (0-192.168.5.98:5246) rId 1 wId2
yy:yy:yy:yy:yy:yy

64813.586 xx:xx:xx:xx:xx:xx <eh> IEEE 802.1X (EAPOL 99B) <==
xx:xx:xx:xx:xx:xx ws (0-192.168.5.98:5246) rId 1 wId2
yy:yy:yy:yy:yy:yy

64813.586 xx:xx:xx:xx:xx:xx <eh>      recv IEEE 802.1X ver=1 type=3
(EAPOL_KEY) data len=35

64813.586 xx:xx:xx:xx:xx:xx <eh>      recv EAPOL-Key 4/4 Pairwise
replay cnt 2

53836.587 xx:xx:xx:xx:xx:xx <dc> STA chg xx:xx:xx:xx:xx:xx vap
Wireless ws (0-192.168.5.98:5246) rId 1 wId2 bssid
yy:yy:yy:yy:yy:yy AUTH

53836.587 xx:xx:xx:xx:xx:xx <cc> STA chg xx:xx:xx:xx:xx:xx vap
Wireless ws (0-192.168.5.98:5246) rId 1 wId2 yy:yy:yy:yy:yy:yy sec
WPA2 PERSONAL auth 1 *****

53836.587 xx:xx:xx:xx:xx:xx <cc> STA_CFG_REQ(12) sta
xx:xx:xx:xx:xx:xx add key (len=16) ==> ws (0-192.168.5.98:5246) rId
1 wId2

53836.589 xx:xx:xx:xx:xx:xx <cc> STA_CFG_REQ(12) xx:xx:xx:xx:xx:xx
<== ws (0-192.168.5.98:5246) rc 0 (Success)

53837.140 xx:xx:xx:xx:xx:xx <dc> DHCP Request server 0.0.0.0 <==
host DESKTOP-CVKGHH mac xx:xx:xx:xx:xx:xx ip 192.168.30.2 xId
88548005

53837.142 xx:xx:xx:xx:xx:xx <dc> DHCP Ack server 192.168.30.1 ==>
host mac xx:xx:xx:xx:xx:xx ip 192.168.30.2 mask 255.255.255.0 gw
192.168.30.1 xId 88548005

```

The exhibits show the diagnose debug log of a station connection taken on the controller CLI. Which security mode is used by the wireless connection?

- A. WPA2 Enterprise
- B. WPA3 Enterprise
- C. WPA2 Personal and radius MAC filtering
- D. Open, with radius MAC filtering

Answer: C

NEW QUESTION 2

Which two configurations are compatible for Wireless Single Sign-On (WSSO)? (Choose two.)

- A. A VAP configured for captive portal authentication
- B. A VAP configured for WPA2 or 3 Enterprise
- C. A VAP configured to authenticate locally on FortiGate

D. A VAP configured to authenticate using a radius server

Answer: BD

Explanation:

In the SSID choose WPA2-Enterprise authentication.

WSSO is RADIUS-based authentication that passes the user's user group memberships to the FortiGate.

NEW QUESTION 3

Which of the following is a requirement to generate analytic reports using on-site FortiPresence deployment?

- A. SQL services must be running
- B. Two wireless APs must be sending data
- C. DTLS encryption on wireless traffic must be turned off
- D. Wireless network security must be set to open

Answer: A

NEW QUESTION 4

What type of design model does FortiPlanner use in wireless design project?

- A. Architectural model
- B. Predictive model
- C. Analytical model
- D. Integration model

Answer: B

NEW QUESTION 5

Which factor is the best indicator of wireless client connection quality?

- A. Downstream link rate, the connection rate for the AP to the client
- B. The receive signal strength (RSS) of the client at the AP
- C. Upstream link rate, the connection rate for the client to the AP
- D. The channel utilization of the channel the client is using

Answer: C

NEW QUESTION 6

Where in the controller interface can you find a wireless client's upstream and downstream link rates?

- A. On the AP CLI, using the cw_diag ksta command
- B. On the controller CLI, using the diag wireless-controller wlac -d sta command
- C. On the AP CLI, using the cw_diag -d sta command
- D. On the controller CLI, using the WiFi Client monitor

Answer: A

NEW QUESTION 7

Six APs are located in a remotely based branch office and are managed by a centrally hosted FortiGate. Multiple wireless users frequently connect and roam between the APs in the remote office.

The network they connect to, is secured with WPA2-PSK. As currently configured, the WAN connection between the branch office and the centrally hosted FortiGate is unreliable.

Which configuration would enable the most reliable wireless connectivity for the remote clients?

- A. Configure a tunnel mode wireless network and enable split tunneling to the local network
- B. Configure a bridge mode wireless network and enable the Local standalone configuration option
- C. Configure a bridge mode wireless network and enable the Local authentication configuration option
- D. Install supported FortiAP and configure a bridge mode wireless network

Answer: A

NEW QUESTION 8

A tunnel mode wireless network is configured on a FortiGate wireless controller. Which task must be completed before the wireless network can be used?

- A. The wireless network interface must be assigned a Layer 3 address
- B. Security Fabric and HTTPS must be enabled on the wireless network interface
- C. The wireless network to Internet firewall policy must be configured
- D. The new network must be manually assigned to a FortiAP profile.

Answer: C

Explanation:

A FortiGate unit is an industry leading enterprise firewall. In addition to consolidating all the functions of a network firewall, IPS, anti-malware, VPN, WAN optimization, Web filtering, and application control in a single platform, FortiGate also has an integrated Wi-Fi controller.

NEW QUESTION 9

Which two statements about distributed automatic radio resource provisioning (DARRP) are correct? (Choose two.)

- A. DARRP performs continuous spectrum analysis to detect sources of interference
- B. It uses this information to allow the AP to select the optimum channel.
- C. DARRP performs measurements of the number of BSSIDs and their signal strength (RSSI). The controller then uses this information to select the optimum channel for the AP.
- D. DARRP measurements can be scheduled to occur at specific times.
- E. DARRP requires that wireless intrusion detection (WIDS) be enabled to detect neighboring devices.

Answer: BC

Explanation:

According to Fortinet training: "When using DARRP, the AP selects the best channel available to use based on the scan results of BSSID/receive signal strength (RSSI) to AC" and "To set the running time for DARRP optimization, use the following CLI command within the wireless controller setting: set darrp-optimize {integer}. Note that DARRP doesn't do continuous spectrum analysis..."

NEW QUESTION 10

As a network administrator, you are responsible for managing an enterprise secure wireless LAN. The controller is based in the United States, and you have been asked to deploy a number of managed APs in a remote office in Germany.

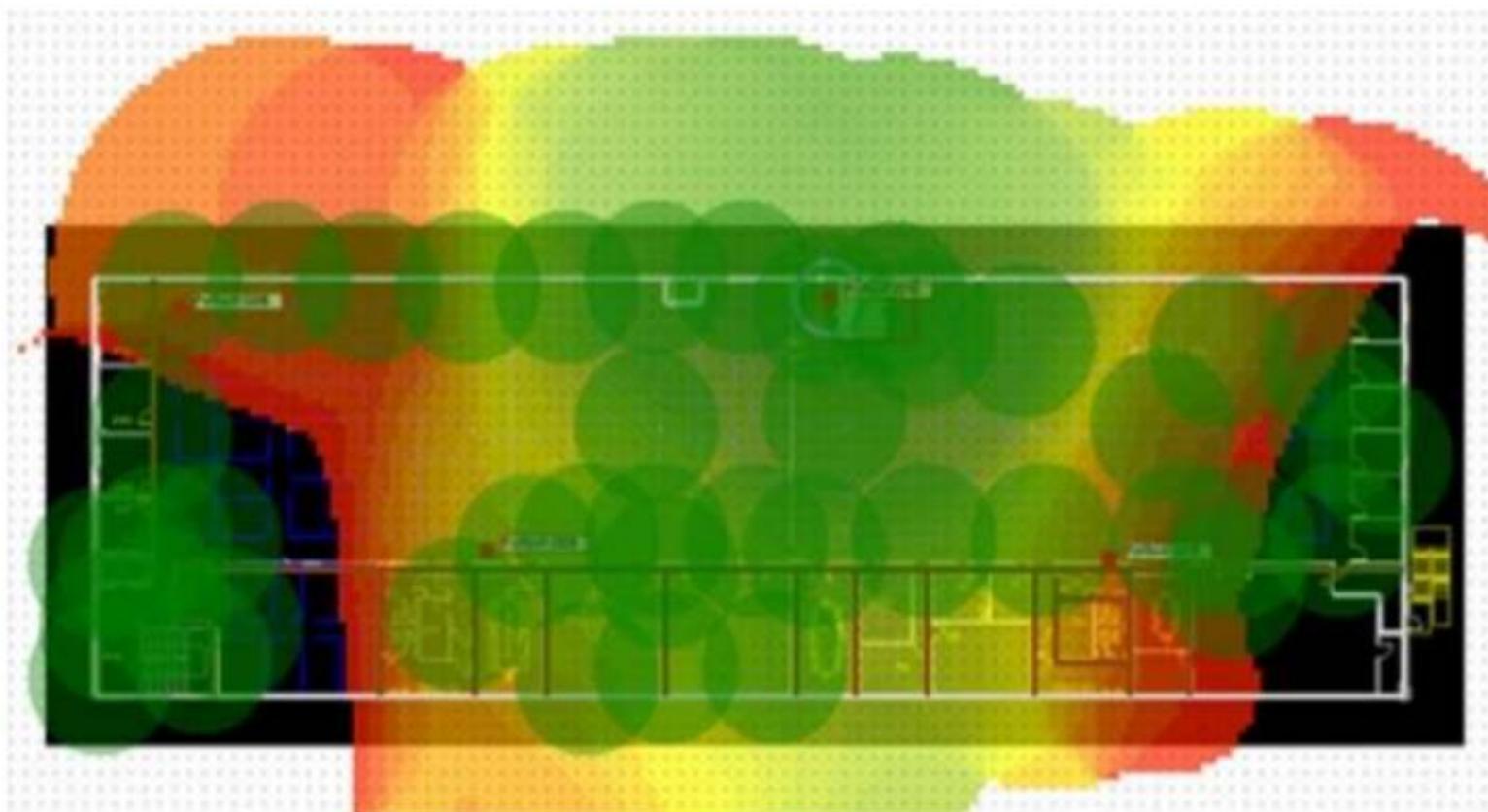
What is the correct way to ensure that the RF channels and transmission power limits are appropriately configured for the remote APs?

- A. Configure the APs individually by overriding the settings in Managed FortiAPs
- B. Configure the controller for the correct country code for Germany
- C. Clone a suitable FortiAP profile and change the county code settings on the profile
- D. Create a new FortiAP profile and change the county code settings on the profile

Answer: C

NEW QUESTION 10

Refer to the exhibit.



If the signal is set to -68 dB on the FortiPlanner site survey reading, which statement is correct regarding the coverage area?

- A. Areas with the signal strength equal to -68 dB are zoomed in to provide better visibility
- B. Areas with the signal strength weaker than -68 dB are cut out of the map
- C. Areas with the signal strength equal or stronger than -68 dB are highlighted in multicolor
- D. Areas with the signal strength weaker than -68 dB are highlighted in orange and red to indicate that no signal was propagated by the APs.

Answer: D

NEW QUESTION 13

As standard best practice, which configuration should be performed before configuring FortiAPs using a FortiGate wireless controller?

- A. Create wireless LAN specific policies
- B. Preauthorize APs
- C. Create a custom AP profile
- D. Set the wireless controller country setting

Answer: D

NEW QUESTION 17

Refer to the exhibits.

Exhibit A

```
config wireless-controller wtp
  edit "FPXXXXXXXXXXXXXXXXX"
    set admin enable
    set name "Authors AP1"
    set wtp-profile "Authors"
    config radio-1
    end
    config radio-2
    end
  next
  edit "FPXXXXXXXXXXXXYYY"
    set admin enable
    set name " Authors AP2"
    set wtp-profile "Authors"
    config radio-1
    end
    config radio-2
    end
  next
  edit "FPXXXXXXXXXXXXZZZ"
    set admin enable
    set name " Authors AP3"
    set wtp-profile "Authors"
    config radio-1
    end
    config radio-2
    end
  next
end
```

Exhibit B


```
sh wireless-controller wtp-profile Authors
config wireless-controller wtp-profile
  edit "Authors"
    set comment "APs allocated to authors"
    set handoff-sta-tresh 30
    config radio-1
      set band 802.11n-5G
      set channel-bonding 40MHz
      set auto-power-level enable
      set auto-power-high 12
      set auto-power-low 1
      set vap-all tunnel
      set channel "36" "40" "44" "48" "52" "56"
      "60" "64" "100" "104" "108" "112" "116" "120" "124"
      "128" "132" "136"
    end
    config radio-2
      set band 802.11n, g-only
      set auto-power-level enable
      set auto-power-high 12
      set auto-power-low 1
      set vap-all tunnel
      set channel "1" "6" "11"
    end
  end
next
end
config wireless-controller vap
  edit "Authors"
    set ssid "Authors"
    set security wpa2-only-enterprise
    set radius-mac-auth enable
    set radius-mac-auth-server "Main AD"
    set local-bridging enable
    set intra-vap-privacy enable
    set schedule "always"
  next
end
```

A wireless network has been created to support a group of users in a specific area of a building. The wireless network is configured but users are unable to connect to it. The exhibits show the relevant controller configuration for the APs and the wireless network. Which two configuration changes will resolve the issue? (Choose two.)

- A. For both interfaces in the wtp-profile, configure set vaps to be "Authors"
- B. Disable intra-vap-privacy for the Authors vap-wireless network
- C. For both interfaces in the wtp-profile, configure vap-all to be manual
- D. Increase the transmission power of the AP radio interfaces

Answer: AC

NEW QUESTION 19

.....

Relate Links

100% Pass Your NSE6_FWF-6.4 Exam with Examible Prep Materials

https://www.examible.com/NSE6_FWF-6.4-exam/

Contact us

We are proud of our high-quality customer service, which serves you around the clock 24/7.

Viste - <https://www.examible.com/>