

## MS-100 Dumps

### Microsoft 365 Identity and Services

<https://www.certleader.com/MS-100-dumps.html>



**NEW QUESTION 1**

- (Exam Topic 1)

You have a Microsoft 365 subscription that contains a guest user named User1. User1 is assigned the User administrator role.

You have a Microsoft Azure Active Directory (Azure AD) tenant named contoso.com. Contoso.com is configured as shown in the following exhibit.

**External collaboration settings**

Save Discard

Guest users permissions are limited ⓘ

Yes No

Admins and users in the guest inviter role can invite ⓘ

Yes No

Members can invite ⓘ

Yes No

Guests can invite ⓘ

Yes No

**Collaboration restrictions**

☒ Allow invitations to be sent to any domain (most inclusive)

☐ Deny invitations to the specified domains

☐ Allow invitations only to the specified domains (most restrictive)

Use the drop-down menus to select the answer choice that completes each statement based on the information presented in the graphic.

NOTE: Each correct selection is worth one point.

User1 can [answer choice].

	▼
open the Azure portal only	
open the Azure portal and view users only	
open the Azure portal, view users, and create new guest users only	
open the Azure portal, view users, create new users, and create new guest users	

All other guest users can [answer choice].

	▼
open the Azure portal only	
open the Azure portal and view users only	
open the Azure portal, view users, and create new guest users only	
open the Azure portal, view users, create new users, and create new guest users	

- A. Mastered
- B. Not Mastered

**Answer:** A

**Explanation:**

References:

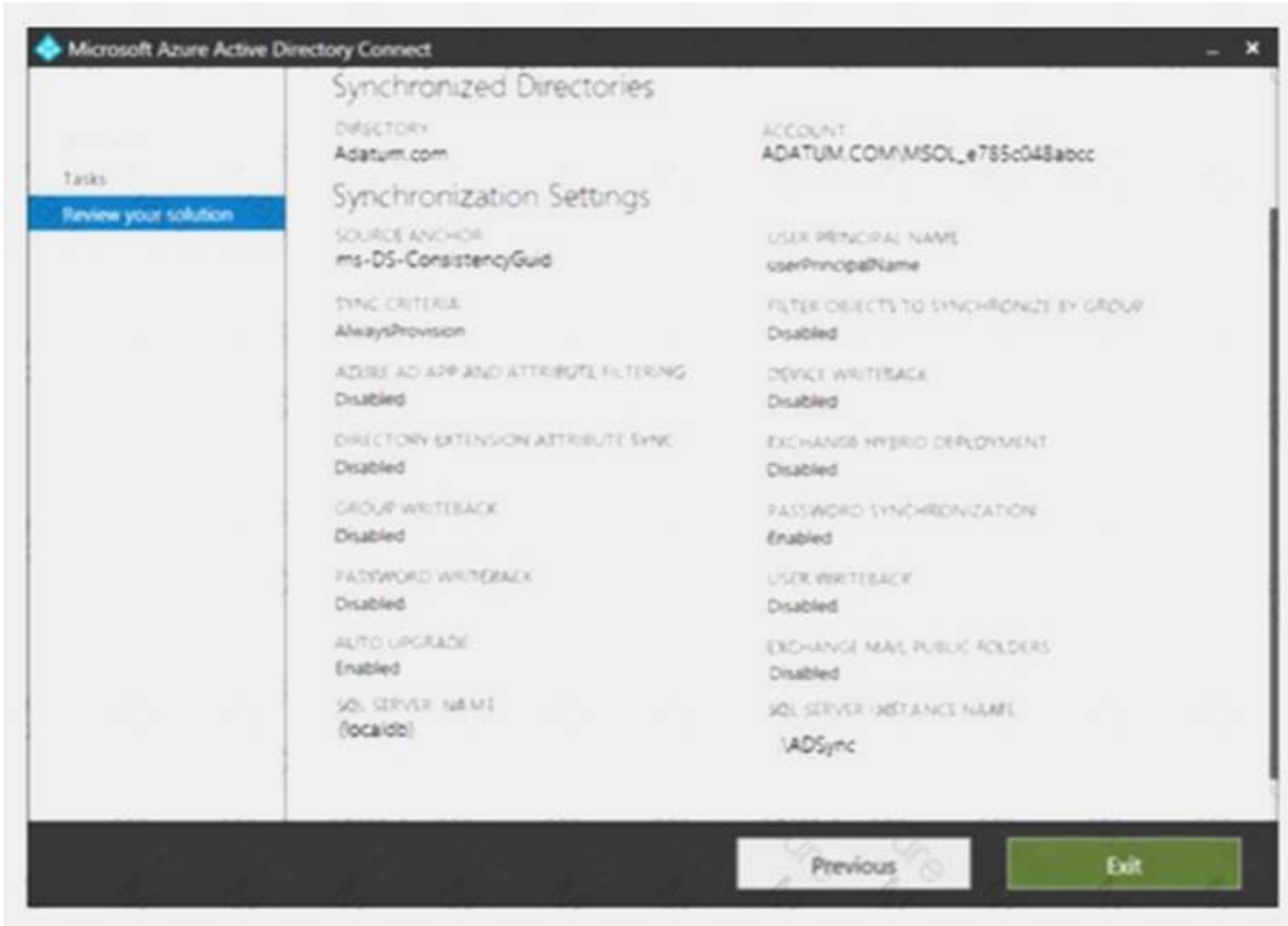
<https://docs.microsoft.com/en-us/azure/active-directory/b2b/delegate-invitations>

<https://docs.microsoft.com/en-us/azure/active-directory/fundamentals/users-default-permissions>

**NEW QUESTION 2**

- (Exam Topic 1)

Your network contains an on-premises Active Directory domain that is synced to Microsoft Azure Active Directory (Azure AD) as shown in the following exhibit.



An on-premises Active Directory user account named Allan Yoo is synchronized to Azure AD. You view Allan's account from Microsoft 365 and notice that his username is set to Allan@contoso.onmicrosoft.com.

For each of the following statements, select Yes if the statement is true. Otherwise, select No. NOTE: Each correct selection is worth one point.

Statements	Yes	No
From the Azure portal, you can reset the password of Allan Yoo.	<input type="radio"/>	<input type="radio"/>
From the Azure portal, you can configure the job title of Allan Yoo.	<input type="radio"/>	<input type="radio"/>
From the Azure portal, you can configure the usage location of Allan Yoo.	<input type="radio"/>	<input type="radio"/>

- A. Mastered  
B. Not Mastered

Answer: A

Explanation:

Statements	Yes	No
From the Azure portal, you can reset the password of Allan Yoo.	<input type="radio"/>	<input checked="" type="radio"/>
From the Azure portal, you can configure the job title of Allan Yoo.	<input type="radio"/>	<input checked="" type="radio"/>
From the Azure portal, you can configure the usage location of Allan Yoo.	<input checked="" type="radio"/>	<input type="radio"/>

NEW QUESTION 3

- (Exam Topic 1)

Your company uses Gmail as a corporate email solution. You purchase a Microsoft 365 subscription and plan to move all email data to Microsoft Exchange Online. You plan to perform the migration by using the Exchange admin center. You need to recommend which type of migration to use and which type of data to migrate. What should you recommend? To answer, select the appropriate options in the answer area. NOTE: Each correct selection is worth one point.

Migration type to use:

▼
Cutover migration
Staged migration
Remote move migration
IMAP migration

Data to include in the migration:

▼
Email only
Email and calendar only
Email, calendar and contacts only
Email, calendar, contacts, and tasks

- A. Mastered  
B. Not Mastered

**Answer:** A**Explanation:**

References:

<https://docs.microsoft.com/en-us/exchange/mailbox-migration/migrating-imap-mailboxes/migrate-g-suite-mailb>**NEW QUESTION 4**

- (Exam Topic 1)

You have a Microsoft 365 tenant that contains Microsoft Exchange Online.

You plan to enable calendar sharing with a partner organization named adatum.com. The partner organization also has a Microsoft 365 tenant.

You need to ensure that the calendar of every user is available to the users in adatum.com immediately. What should you do?

- A. From the Exchange admin center, create a sharing policy.  
B. From the Exchange admin center, create a new organization relationship  
C. From the Microsoft 365 admin center, modify the Organization profile settings.  
D. From the Microsoft 365 admin center, configure external site sharing.

**Answer:** B**Explanation:**

References:

<https://docs.microsoft.com/en-us/exchange/sharing/organization-relationships/create-an-organization-relationshi>**NEW QUESTION 5**

- (Exam Topic 1)

Your network contains an Active Directory domain named contoso.com. All users authenticate by using a third-party authentication solution.

You purchase Microsoft 365 and plan to implement several Microsoft 365 services. You need to recommend an identity strategy that meets the following requirements:

- ▶ Provides seamless SSO
  - ▶ Minimizes the number of additional servers required to support the solution
  - ▶ Stores the passwords of all the users in Microsoft Azure Active Directory (Azure AD)
  - ▶ Ensures that all the users authenticate to Microsoft 365 by using their on-premises user account
- You are evaluating the implementation of federation.

Which two requirements are met by using federation? Each correct answer presents a complete solution. NOTE: Each correct selection is worth one point.

- A. minimizes the number of additional servers required to support the solution  
B. provides seamless SSO  
C. stores the passwords of all the users in Azure AD  
D. ensures that all the users authenticate to Microsoft 365 by using their on-premises user account.

**Answer:** BD**NEW QUESTION 6**

- (Exam Topic 1)

Your network contains an Active Directory forest named local.

You have a Microsoft 365 subscription. You plan to implement a directory synchronization solution that will use password hash synchronization.

From the Microsoft 365 admin center, you verify the contoso.com domain name. You need to prepare the environment for the planned directory synchronization solution.

What should you do first?

- A. From the public DNS zone of contoso.com, add a new mail exchanger (MX) record.  
B. From Active Directory Domains and Trusts, add contoso.com as a UPN suffix  
C. From the Microsoft 365 admin center, verify the contoso.com domain name.  
D. From Active Directory Users and Computers, modify the UPN suffix for all users.

**Answer:** B



**NEW QUESTION 7**

- (Exam Topic 1)

Your company has offices in several cities and 100.000 users. The network contains an Active Directory domain contoso.com.

You purchase Microsoft 365 and plan to deploy several Microsoft 365 services.

You are evaluating the implementation of pass-through authentication and seamless SSO. Azure AD Connect will NOT be in staging mode.

You need to identify the redundancy limits for the planned implementation.

What should you identify? To answer, select the appropriate options in the answer area. NOTE: Each correct selection is worth one point.

Maximum number of servers on which you can run  
Azure AD Connect:

▼
1
2
4
6
11

Maximum number of servers on which you can run  
standalone Authentication Agents:

▼
1
2
4
6
11

- A. Mastered
- B. Not Mastered

**Answer:** A

**Explanation:**

Maximum number of servers on which you can run  
Azure AD Connect:

▼
1
2
4
6
11

Maximum number of servers on which you can run  
standalone Authentication Agents:

▼
1
2
4
6
11

**NEW QUESTION 8**

- (Exam Topic 1)

Your company has a Microsoft 365 subscription. All identities are managed in the cloud. The company purchases a new domain name.

You need to ensure that all new mailboxes use the new domain as their primary email address. What are two possible ways to achieve the goal? Each correct answer presents a complete solution. NOTE: Each correct selection is worth one point.

- A. From Microsoft Exchange Online PowerShell, run the Update-EmailAddressPolicy policy command.
- B. From the Exchange admin center, click mail flow, and then configure the email address policies.
- C. From the Microsoft 365 admin center, click Setup, and then configure the domains.
- D. From Microsoft Exchange Online PowerShell, run the Set-EmailAddressPolicy policy command.
- E. From the Azure Active Directory admin center, configure the custom domain names.

**Answer:** BD

**NEW QUESTION 9**

- (Exam Topic 1)

Your network contains two Active Directory forests. Each forest contains two domains. All client computers run Windows 10 and are domain-joined.

You plan to configure Hybrid Azure AD join for the computers. You create Microsoft Azure Active Directory (Azure AD) tenant.

You need to ensure that the computers can discover the Azure AD tenant. What should you create?

- A. a new computer account for each computer
- B. a new service connection point (SCP) for each domain
- C. a new trust relationship for each forest

D. a new service connection point (SCP) for each forest

**Answer:** D

**Explanation:**

References:  
<https://docs.microsoft.com/en-us/azure/active-directory/devices/hybrid-azuread-join-manual>

**NEW QUESTION 10**

- (Exam Topic 1)  
You create a Microsoft 365 subscription.  
You plan to deploy Microsoft Office 365 ProPlus applications to all the client computers at your company. You prepare the following XML file for the planned deployment.

```
<Configuration>
  <Add OfficeClientEdition="32"
    Channel="Broad">
    <Product ID="0365ProPlusRetail">
      <Language ID="en-us" />
    </Product>
    </Add>
  <Updates Enabled="TRUE"
    UpdatePath=""
    Channel="Targeted" />
  <Display Level="None"
    AcceptEULA="TRUE" />
</Configuration>
```

Use the drop-down menus to select the answer choice that completes each statement based on the information presented in the graphic.  
NOTE: Each correct selection is worth one point.

Office 365 ProPlus feature updates will be installed [answer choice].

once a month  
once every six months  
once a year

Office 365 ProPlus security updates will be installed [answer choice].

once a month  
every six months in January and July  
every six months in March and September

- A. Mastered
- B. Not Mastered

**Answer:** A

**Explanation:**

References:  
<https://docs.microsoft.com/en-us/deployoffice/configuration-options-for-the-office-2016-deployment-tool#update> <https://docs.microsoft.com/en-us/deployoffice/overview-of-update-channels-for-office-365-proplus>

**NEW QUESTION 10**

- (Exam Topic 1)  
Note: This question is part of a series of questions that present the same scenario. Each question in the series contains a unique solution that might meet the stated goals. Some question sets might have more than one correct solution, while others might not have a correct solution.  
After you answer a question in this section, you will NOT be able to return to it. As a result, these questions will not appear in the review screen.  
Your company has a Microsoft Office 365 tenant.  
You suspect that several Office 365 features were recently updated.  
You need to view a list of the features that were recently updated in the tenant. Solution: You use the View service requests option in the Microsoft 365 admin center. Does this meet the goal?

- A. Yes
- B. NO

**Answer:** B

**NEW QUESTION 11**

- (Exam Topic 1)  
Your company has a Microsoft Azure Active Directory (Azure AD) directory tenant named contoso.onmicrosoft.com.  
All users have client computers that run Windows 10 Pro and are joined to Azure AD. The company purchases a Microsoft 365 E3 subscription.  
You need to upgrade all the computers to Windows 10 Enterprise. The solution must minimize administrative effort.  
You assign licenses from the Microsoft 365 admin center. What should you do next?

- A. Add a custom domain name to the subscription.

- B. Deploy Windows 10 Enterprise by using Windows Autopilot.
- C. Create provisioning package, and then deploy the package to all the computers.
- D. Instruct all the users to log off of their computer, and then to log in again.

**Answer:** B

**NEW QUESTION 14**

- (Exam Topic 1)

Your company has an on-premises Microsoft Exchange Server 2013 organization. The company has 100 users.

The company purchases Microsoft 365 and plans to move its entire.- infrastructure to the cloud.

The company does NOT plan to sync the on-premises Active Directory domain to Microsoft Azure Active Directory (Azure AD).

You need to recommend which type of migration to use to move all email messages, contacts, and calendar items to Exchange Online.

What should you recommend?

- A. cutover migration
- B. IMAP migration
- C. remote move migration
- D. staged migration

**Answer:** A

**Explanation:**

References:

<https://docs.microsoft.com/en-us/exchange/mailbox-migration/cutover-migration-to-office-365>

**NEW QUESTION 15**

- (Exam Topic 1)

You have a Microsoft 365 subscription.

You need to prevent phishing email messages from being delivered to your organization. What should you do?

- A. From the Exchange admin center, create an anti-malware policy.
- B. From Security & Compliance, create a DLP policy.
- C. From Security & Compliance, create a new threat management policy.
- D. From the Exchange admin center, create a spam filter policy.

**Answer:** C

**Explanation:**

References:

<https://docs.microsoft.com/en-us/office365/securitycompliance/set-up-anti-phishing-policies>

**NEW QUESTION 19**

- (Exam Topic 1)

You have several Microsoft SharePoint document libraries in your on-premises environment. You have a Microsoft 365 tenant that has directory synchronization implemented.

You plan to move all the document libraries to SharePoint Online.

You need to recommend a migration strategy for the document libraries.

Which three actions should you perform in sequence? To answer, move the appropriate actions from the list of actions to the answer area and arrange them in the correct order.

**Actions**

Use the SharePoint Migration Tool to migrate the SharePoint data.

Create new SharePoint sites.

Run azcopy.exe to migrate the SharePoint data.

Create a Microsoft Azure Storage account.

Create new SharePoint libraries.

**Answer Area**

- A. Mastered
- B. Not Mastered

**Answer:** A

**Explanation:**

References:

<https://docs.microsoft.com/en-us/sharepointmigration/how-to-use-the-sharepoint-migration-tool>

**NEW QUESTION 24**

- (Exam Topic 1)

You recently migrated your on-premises email solution to Microsoft Exchange Online and are evaluating which licenses to purchase. You want the members of two groups named IT and Managers to be able to use the features shown in the following table.

Feature	Available to
Microsoft Azure Active Directory (Azure AD) conditional access	IT group, Managers group
Microsoft Azure Active Directory (Azure AD) Privileged Identity Management	IT group

The IT group contains 50 users. The Managers group contains 200 users.

You need to recommend which licenses must be purchased for the planned solution. The solution must minimize licensing costs.

Which licenses should you recommend?


- A. 250 Microsoft 365 E3 only
- B. 50 Microsoft 365 E 3 and 200 Microsoft 365 E5
- C. 250 Microsoft 365 E5 only
- D. 200 Microsoft 365 E3 and 50 Microsoft 365 E5

**Answer:** D

#### NEW QUESTION 27

- (Exam Topic 1)

You have a Microsoft Azure Active Directory (Azure AD) tenant named contoso.com that includes a user named User1.

You enable multi-factor authentication for contoso.com and configure the following two fraud alert settings:  Set Allow users to submit fraud alerts: On

 Automatically block users who report fraud: On

You need to instruct the users in your organization to use the fraud reporting features correctly. What should you tell the users to do? To answer, select the appropriate options in the answer area. NOTE: Each correct selection is worth one point.

A user can report fraud on her account by:

▼

Typing a special code after receiving an alert call

Sending an email message to an administrator

Using the Microsoft Authenticator app

If User1 reports fraud on his account, the account will be blocked automatically for:

▼

6 hours

1 day

7 days

90 days

- A. Mastered
- B. Not Mastered

**Answer:** A

#### Explanation:

References:

<https://docs.microsoft.com/en-us/azure/active-directory/authentication/howto-mfa-mfasettings#fraud-alert>

#### NEW QUESTION 32

- (Exam Topic 1)

You have an on premises web application that is published by using a URL of https://app.contoso.local. You purchase a Microsoft 36S subscription.

Several external users must be able to connect to the web application

You need to recommend a solution for external access to the application. The solution must support multi-factor authentication.

Which two actions should you recommend? Each correct answer presents part of the solution. NOTE: Each correct selection is worth one point.

- A. From an on-premises server, install a connector, and then publish the app.
- B. From the Azure Active Directory admin center, enable an Application Proxy.
- C. From the Azure Active Directory admin center, treat a conditional access policy.
- D. From an on premises server, install an Authentication Agent.
- E. Republish the web-application by using http/app.contoso.com

**Answer:** AB

#### Explanation:

References:

<https://docs.microsoft.com/en-us/azure/active-directory/manage-apps/application-proxy-add-on-premises-applic>

#### NEW QUESTION 36

- (Exam Topic 1)

Your company has a Microsoft 365 subscription.

You need to identify all the users in the subscription who are licensed for Microsoft Office 365 through a group membership. The solution must include the name of the group used to assign the license.

What should you use?



- A. the Licenses blade in the Azure portal
- B. Reports in the Microsoft 365 admin center
- C. Active users in the Microsoft 365 admin center
- D. Report in Security & Compliance

**Answer:** A

#### NEW QUESTION 40

- (Exam Topic 1)

You have a Microsoft 365 subscription and a Microsoft Azure Active Directory (Azure AD) tenant named contoso.com. Contoso.com contains the users shown in the following table.

Name	Type	Role
User1	Member	None
User2	Member	Security administrator, Guest inviter
User3	Member	User administrator
User4	Guest	None

Contoso.com is configured as shown in the following exhibit.

You need to ensure that guest users can be created in the tenant. Which setting should you modify?

- A. Guests can invite.
- B. Guest users permissions are limited.
- C. Members can invite.
- D. Admins and users in the guest inviter role can invite.
- E. Deny invitations to the specified domains

**Answer:** D

#### Explanation:

References:

<https://docs.microsoft.com/en-us/azure/active-directory/b2b/delegate-invitations> <https://docs.microsoft.com/en-us/azure/active-directory/fundamentals/users-default-permissions>

#### NEW QUESTION 43

- (Exam Topic 1)

Your Network contains an on-premises Active Directory domain named contoso.local. The domain contains five domain controllers.

Your company purchases Microsoft 365 and creates a Microsoft Anne Active Directory (Azure AD) tenant named .contoso.onmicrosoft.com.

You plan to implement pass- through authentication.

You need to prepare the environment for the planned implementation of pass-through authentication. Which three actions should you perform? Each correct answer presents pan of the solution.

NOTE: Each correct selection is worth one point.

- A. Modify the email address attribute for each user account.
- B. From the Azure portal, add a custom domain name.
- C. From Active Directory Domains and Trusts, add a UPN suffix.

- D. Modify the User logon name for each user account.
- E. From the Azure portal, configure an authentication method.
- F. From a domain controller, install an authentication Agent.

**Answer:** BCD

#### NEW QUESTION 45

- (Exam Topic 1)

Your company has a Microsoft 365 subscription that has multi-factor authentication configured for all users. Users on the network report that they are prompted for multi-factor authentication multiple times a day.

You need to reduce the number of times the users are prompted for multi-factor authentication on their company-owned devices. What should you do?

- A. Enable the multi-factor authentication trusted IPs setting, and then verify each device as a trusted device.
- B. Enable the remember multi-factor authentication setting, and then verify each device as a trusted device.
- C. Enable the multi-factor authentication trusted IPs setting, and then join all client computers to Microsoft Azure Active Directory (Azure AD).
- D. Enable the remember multi-factor authentication setting, and then join all client computers to Microsoft Azure Active Directory (Azure AD).

**Answer:** B

#### Explanation:

References:

<https://docs.microsoft.com/en-us/azure/active-directory/authentication/howto-mfa-mfasettings>

#### NEW QUESTION 48

- (Exam Topic 1)

Your company has 10,000 users who access all applications from an on-premises data center. You plan to create a Microsoft 365 subscription and to migrate data to the cloud.

You plan to implement directory synchronization.

User account and group accounts must sync to Microsoft Azure Directory (Azure AD) successfully. You discover that several user accounts fail to sync to Azure AD.

You need to identify which user accounts failed to sync. You must resolve the issue as quickly as possible. What should you do?

- A. From Active Directory Administrative Center, search for all the users, and then modify the properties of the user accounts.
- B. Run idfix.exe, and then click Complete.
- C. From Windows PowerShell, run the Start-AdSyncSyncCycle –PolicyType Delta command.
- D. Run idfix.exe, and then click Edit.

**Answer:** D

#### NEW QUESTION 51

- (Exam Topic 1)

Your company has a Microsoft 365 subscription and a Microsoft Azure Active Directory (Azure AD) tenant named contoso.onmicrosoft.com.

An external vendor has a Microsoft account that has a username of user1@outlook.com. You plan to provide user1@outlook.com with access to several resources in the subscription.

You need to add the external user account to contoso.onmicrosoft.com. The solution must ensure that the external vendor can authenticate by using user1@outlook.com.

What should you do?

- A. From Azure Cloud Shell, run the New-AzureADUser cmdlet and specify –UserPrincipalName user1@outlook.com.
- B. From the Microsoft 365 admin center, add a contact, and then specify user1@outlook.com as the email address.
- C. From the Azure portal, add a new guest user, and then specify user1@outlook.com as the email address.
- D. From the Azure portal, add a custom domain name, and then create a new Azure AD user and use user1@outlook.com as the username.

**Answer:** C

#### NEW QUESTION 54

- (Exam Topic 1)

You have a Microsoft 365 subscription that contains several Microsoft SharePoint Online sites. You discover that users from your company can invite external users to access files on the SharePoint sites. You need to ensure that the company users can invite only authenticated guest users to the sites. What should you do?

- A. From the Microsoft 365 admin center, configure a partner relationship.
- B. From SharePoint Online Management Shell, run the set-SPOSite cmdlet.
- C. From the Azure Active Directory admin center, configure a conditional access policy.
- D. From the SharePoint admin center, configure the sharing settings.

**Answer:** D

#### NEW QUESTION 57

- (Exam Topic 1)

Your network contains an Active Directory forest named adatum.local. The forest contains 500 users and uses adatum.com as a UPN suffix.

You deploy a Microsoft 365 tenant.

You implement directory synchronization and sync only 50 support users.

You discover that five of the synchronized users have usernames that use a UPN suffix of onmicrosoft.com. You need to ensure that all synchronized identities retain the UPN set in their on-premises user account. What should you do?

- A. From the Microsoft 365 admin center, add adatum.com as a custom domain name.

- B. From Windows PowerShell, run the Set-ADDomain –AllowedDNSSuffixes adatum.com command.  
C. From Active Directory Users and Computers, modify the UPN suffix of the five user accounts.  
D. From the Microsoft 365 admin center, add adatum.local as a custom domain name.

**Answer: C**

#### NEW QUESTION 61

- (Exam Topic 1)

Note: This question is part of a series of questions that present the same scenario. Each question in the series contains a unique solution that might meet the stated goals. Some question sets might have more than one correct solution, while others might not have a correct solution.

After you answer a question in this section, you will NOT be able to return to it. As a result, these questions will not appear in the review screen.

Your network contains an Active Directory forest. You deploy Microsoft 365.

You plan to implement directory synchronization.

You need to recommend a security solution for the synchronized identities. The solution must meet the following requirements:

- ▶ Users must be able to authenticate successfully to Microsoft 365 services if Active Directory becomes unavailable.
- ▶ Users passwords must be 10 characters or more.

Solution: Implement pass-through authentication and configure password protection in the Azure AD tenant.

Does this meet the goal?

- A. Yes  
B. No

**Answer: B**

#### NEW QUESTION 66

- (Exam Topic 2)

You need to meet the technical requirements for the user licenses.

Which two properties should you configure for each user? To answer, select the appropriate properties in the answer area.


NOTE: Each correct selection is worth one point.

### Identity

Name

User name

Object ID  



First Name

Last Name

User type  
Member

Source  
Azure Active Directory

### Job info

Job title

Department

Manager  

Remove Change

### Settings

Block sign in  
Yes No

Usage location

### Contact info

Street address

State or province

Country or region

City

ZIP or postal code

Office phone

### Authentication contact info

Phone

Email

Alternate phone

Alternate email

- A. Mastered  
B. Not Mastered

**Answer: A**

**Explanation:**

### Identity


Name

User1

User name

User1@Contoso1410.onmicrosoft.com

Object ID

22c31139-c143-4076-a71c-b5d0d5...

First Name

Last Name

User type

Member

Source

Azure Active Directory

### Job info

Job title

Department

Manager

Remove Change

### Settings

Block sign in

Yes No

Usage location

### Contact info

Street address

State or province

Country or region

City

ZIP or postal code

Office phone

### Authentication contact info

Phone

Email

Alternate phone

Alternate email

#### NEW QUESTION 68

- (Exam Topic 2)

To which Azure AD role should you add User4 to meet the security requirement?

- A. Password administrator
- B. Global administrator
- C. Security administrator
- D. Privileged role administrator

**Answer:** B

#### NEW QUESTION 70

- (Exam Topic 2)

You need to meet the security requirement for the vendors. What should you do?

- A. From the Azure portal, add an identity provider.
- B. From Azure Cloud Shell, run the New-AzureADUser cmdlet and specify the –UserPrincipalName parameter.
- C. From the Azure portal, create guest accounts.
- D. From Azure Cloud Shell, run the New-AzureADUser cmdlet and specify the –UserType parameter.

**Answer:** C

#### NEW QUESTION 75

.....



## Thank You for Trying Our Product

\* 100% Pass or Money Back

All our products come with a 90-day Money Back Guarantee.

\* One year free update

You can enjoy free update one year. 24x7 online support.

\* Trusted by Millions

We currently serve more than 30,000,000 customers.

\* Shop Securely

All transactions are protected by VeriSign!

### 100% Pass Your MS-100 Exam with Our Prep Materials Via below:

<https://www.certleader.com/MS-100-dumps.html>