

## Exam Questions 300-425

Designing Cisco Enterprise Wireless Networks (ENWLSD)

<https://www.2passeasy.com/dumps/300-425/>



#### NEW QUESTION 1

An engineer is designing a wireless deployment for a university auditorium. Which two features can be used to help deal with the issues introduced by high AP count? (Choose two.)

- A. TSPEC
- B. RXSOP
- C. TPC
- D. LSS
- E. DFS

**Answer:** CE

#### NEW QUESTION 2

An engineer must ensure that the new wireless LAN deployment can support seamless roaming between access points using a standard based on an amendment to the 802.11 protocol. Which protocol must the engineer select?

- A. 802.11i
- B. 802.11ac
- C. 802.11r
- D. 802.11e

**Answer:** C

#### NEW QUESTION 3

A network engineer is preparing for an office site survey with a height of 2.5 meters. Which three components are recommended to complete the survey? (Choose three.)

- A. Use a battery pack to power APs
- B. Use a drawing of the office space to draw AP and client placements.
- C. Use DoS attack on APs while measuring the throughput.
- D. Use APs with directional antennas.
- E. Use APs with external antennas.
- F. Use APs with built-in antennas.

**Answer:** ABF

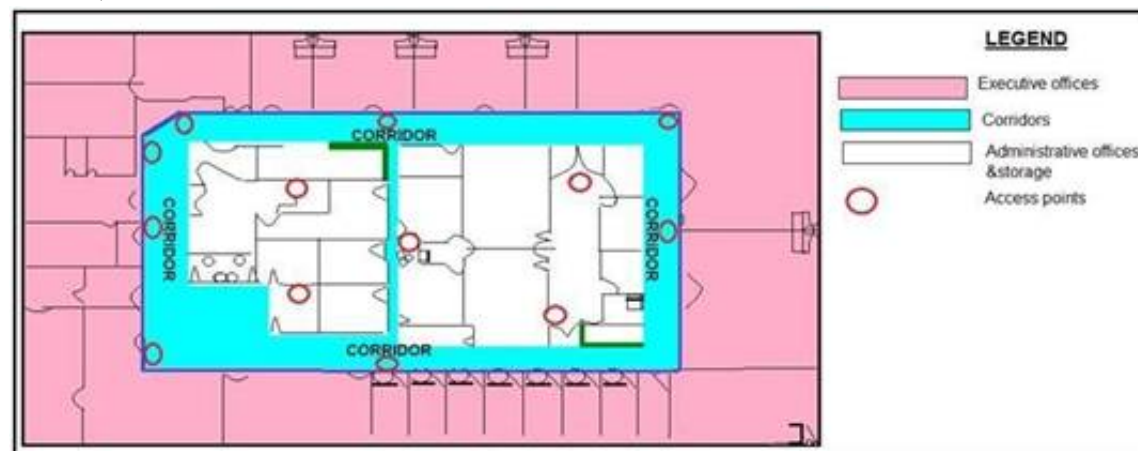
#### NEW QUESTION 4

A wireless engineer must optimize RF performance for multiple buildings with multiple types of construction and user density. Which two actions must be taken? (Choose two.)

- A. Configure FlexConnect groups for each building.
- B. Configure WMM profiles for each building.
- C. Configure AP groups for each area type.
- D. Configure RF profiles for each area type.
- E. Enable DTPC on the network.

**Answer:** CD

#### NEW QUESTION 5



Refer to the exhibit. What is the main reason why the Wi-Fi design engineer took a different approach than installing the APs in the offices, even though that installation provides better coverage?

- A. aesthetics
- B. transmit power considerations
- C. antenna gain
- D. power supply considerations

**Answer:** B

#### NEW QUESTION 6

A company wants to replace its existing PBX system with a new VoIP System that will include wireless IP phones. The CIO has concerns about whether the company's existing wireless network can support the new system. Which tool in Cisco Prime can help ensure that the current network will support the new phone

system?

- A. Location Readiness
- B. Site Calibration
- C. Map Editor
- D. Voice Readiness

**Answer:** D

#### NEW QUESTION 7

Which two considerations must a network engineer have when planning for voice over wireless roaming? (Choose two.)

- A. Full reauthentication introduces gaps in a voice conversation.
- B. Roaming time increases when using 802.1x + Cisco Centralized Key Management.
- C. Roaming occurs when the phone has seen at least four APs.
- D. Roaming occurs when the phone has reached -80 dBs or below.
- E. Roaming with only 802.1x authentication requires full reauthentication.

**Answer:** AE

#### NEW QUESTION 8

An engineer has configured guest anchoring for a newly created SSD however, the mobility tunnels are not up, and EPING is failing from the foreign WLC to the anchor WLC. Which traffic flow must be allowed at the firewall to enable the communication?

- A. UDP port 16666
- B. IP protocol 97
- C. UDP port 97
- D. TCP port 97

**Answer:** A

#### NEW QUESTION 9

A wireless network consultant must assess an existing wireless LAN controller. Which section must the consultant check before replacing the old APs with APs that are IEEE 802.11ac-capable?

- A. number of AP licenses
- B. controller PSU
- C. throughput capacity
- D. software version

**Answer:** A

#### NEW QUESTION 10

An engineer must create data link redundancy for the company's Cisco Wireless LAN controller. The engineer has decided to configure LAG-based redundancy instead of port-based redundancy. Which three features of LAG-based redundancy influenced this decision? (Choose three.)

- A. Packets are always sent out on the same port they are received on.
- B. All interface traffic passes as long as one port is up.
- C. The same port has multiple untagged dynamic interfaces.
- D. Interface connection to two separate nonstacked switches is available.
- E. Full bandwidth of all links is available.
- F. Ports are grouped into multiple LAGs.

**Answer:** ABF

#### NEW QUESTION 10

A customer is running a guest WLAN with a foreign/export-anchor setup. There is one anchor WLC in the US and two in Europe. Anchor WLC priorities are used to prefer local anchors. During a routine network audit, it is discovered that a large number of guest client sessions in the US are anchored to the WLCs in Europe. Which reason explains this behavior?

- A. The foreign WLC failed and recovered.
- B. The US anchor WLC failed and recovered.
- C. The US anchor WLC is anchored to itself with a priority value of zero.
- D. The anchor WLC is in the same mobility group.

**Answer:** B

#### NEW QUESTION 15

Which non-Wi-Fi interferer can be identified by Metageek Chanalyzer?

- A. PDAs
- B. jammers
- C. smartphones
- D. printers

**Answer:** B

#### NEW QUESTION 16

Which statement about the 9800 Series Wireless Controller mobility tunnel on a Cisco Catalyst 9800 controller is true?

- A. It is an IPsec tunnel with control path only.
- B. It is a CAPWAP tunnel with data path only.
- C. It is a CAPWAP tunnel with control path and data path.
- D. It is an IPsec tunnel with control path and data path.

Answer: B

#### NEW QUESTION 21

Which statement about AP failover priority for access points when configured with priority 1 or 4 is true?

- A. When configured with priority 1, the access point is assigned with the highest priority level and it is marked as critica
- B. This access point fails over before other access points with the lower priority when there is primary controller failure.
- C. When configured with priority 4, the access point is assigned with the highest priority level and it is marked as critica
- D. This access point fails over before other access points with the lower priority when there is primary controller failure.
- E. When configured with priority 4, the access point is assigned with the lowest priority level and it is marked as lo
- F. This access point fails over after other access points with the higher priority when there is primary controller failure.
- G. When configured with priority 1, the access point is assigned with the medium priority level and it is marked as mediu
- H. This access point fails over after other access points with the higher priority when there is primary controller failure.

Answer: B

#### NEW QUESTION 22

An engineer must ensure that the wireless network can accomplish fast secure roaming by way of caching keys on the access points. Which key caching mechanism is enabled by default on a Cisco AireOS WLC?

- A. SKC
- B. OKC
- C. 802.11r
- D. CCKM

Answer: D

#### NEW QUESTION 23

Name Prefix: AP

Add APs: Automatic

AP Type: AP3700I

Enable 11n Support: ☐

802.11a/n/ac Antenna: Internal-3700-5GHz

802.11b/g/n Antenna: Internal-3700-2.4GHz

Protocol: 802.11a/n/ac/b/g/n

Throughput: 802.11a/n/ac: 15-18, 802.11b/g/n: 6

Services: ☒ Advanced Options

☒ Data/Coverage

Safety Margin: Aggressive

☒ Voice

Safety Margin: Aggressive

☒ Location

☐ Location with Monitor Mode APs

☐ Demand

☐ Override Coverage Per AP

Per AP Area (sq feet)

Total Coverage Area: 179312 (sq feet)

Calculate

Recommended AP Count: 74

Data/Coverage: 48

Voice: 48

Location: 59

Location with Monitor Mode APs

Demand

Floor Type: Cubes and Walled Offices

Add APs Automatically: Realize and move the rectangle using the mouse over the desired coverage area, then specify placement criteria. Click "Calculate" to determine the number of APs recommended by NCS. If you are satisfied with the result, press "Apply". APs will be created and automatically positioned on the map.

Refer to the exhibit. Which two statements about Cisco Prime Infrastructure are true? (Choose two.)

- A. It presents the recommended number of APs for the selected coverage area based on the selections made.
- B. Planning mode requires a special license in Cisco Prime Infrastructure.
- C. It shows the map editor feature in Cisco Prime Infrastructure.
- D. Controllers must be synchronized with Cisco Prime Infrastructure for planning mode to work.
- E. It shows the planning mode feature in Cisco Prime Infrastructure.

Answer: DE

#### NEW QUESTION 26

Which three pieces of equipment are needed to conduct a fully measured wireless survey? (Choose three.)

- A. PoE battery
- B. spirit level
- C. access point
- D. tall tripod
- E. goggles
- F. ladder

**Answer:** ACD

#### NEW QUESTION 30

A company has 10 access point licenses available on their backup Cisco WLC and their primary Cisco WLC is at full capacity, 5 access points are set to high failover priority and 7 access points are set to critical failover priority. During a failure, not all critical access points failed over to the backup Cisco WLC. Which configuration is the cause of this issue?

- A. The high priority access point is oversubscribed.
- B. network ap-priority is set to enable.
- C. The critical priority access point count is oversubscribed.
- D. network ap-priority is set to disable.

**Answer:** A

#### NEW QUESTION 33

An engineer must decide the cell overlap for a wireless voice deployment. Which Cisco measurement recommendation should be considered?

- A. The edge of the cell should be -67 dBm.
- B. The edge of the cell should be below 35 RSSI.
- C. The measurement should be done on the 2.4-GHz band.
- D. One AP should be deployed per 3000 square feet.

**Answer:** A

#### NEW QUESTION 38

A network engineer is configuring high availability on an access point. What is the maximum number of controllers that can be configured?

- A. 1
- B. 2
- C. 3
- D. 4

**Answer:** B

#### NEW QUESTION 43

An engineer must configure the virtual IP address on multiple controllers in a mobility group. Which rule must the engineer follow to ensure proper roaming?

- A. Ensure that the DNS entry is tied to the virtual IP address of the WLC.
- B. Use a unique IP address for each WLC.
- C. Ensure that the DNS Host Name field is defined.
- D. Use the same IP address for each WLC.

**Answer:** A

#### NEW QUESTION 45

A wireless engineer is utilizing the voice readiness tool in Cisco Prime for a customer that wants to deploy Cisco IP phones. Which dBm range is the network inspected against?

- A. -78 to -65 dBm B.-72 to -67 dBm
- B. 85 to -65 dBm
- C. -85 to -67 dBm

**Answer:** D

#### NEW QUESTION 48

An engineer is reducing the subnet size of the corporate WLAN by segmenting the VLAN into smaller subnets. Clients will be assigned a subnet by location. Which type of groups can the engineer use to map the smaller subnets to the corporate WLAN?

- A. WLC port groups
- B. RF groups
- C. AP groups
- D. interface groups

**Answer:** D

#### NEW QUESTION 53

A wireless deployment in a high-density environment is being used by vendors to process credit card payment transactions via handheld mobile scanners. The scanners are having problems roaming between access points in the environment. Which feature on the wireless controller should have been incorporated in the

design?

- A. RX SOP
- B. 802.11w
- C. AP Heartbeat Timeout
- D. Application Visibility Control

**Answer:** A

#### NEW QUESTION 58

.....



## THANKS FOR TRYING THE DEMO OF OUR PRODUCT

Visit Our Site to Purchase the Full Set of Actual 300-425 Exam Questions With Answers.

We Also Provide Practice Exam Software That Simulates Real Exam Environment And Has Many Self-Assessment Features. Order the 300-425 Product From:

<https://www.2passeasy.com/dumps/300-425/>

## Money Back Guarantee

### 300-425 Practice Exam Features:

- \* 300-425 Questions and Answers Updated Frequently
- \* 300-425 Practice Questions Verified by Expert Senior Certified Staff
- \* 300-425 Most Realistic Questions that Guarantee you a Pass on Your FirstTry
- \* 300-425 Practice Test Questions in Multiple Choice Formats and Updatesfor 1 Year