

Exam Questions JN0-211

Cloud-Associate (JNCIA-Cloud)

<https://www.2passeasy.com/dumps/JN0-211/>



NEW QUESTION 1

Which statement is true about the OpenConfig data model?

- A. It supports YANG
- B. It provides UDP-based transport
- C. It is embedded in all devices that run the Junos OS
- D. It uses MySQL as the default database structure

Answer: A

NEW QUESTION 2

Which statement is correct when deploying services inside containers?

- A. Containers can always be deployed for free
- B. Containers use fewer resources than VMs
- C. Services have dedicated processor and memory resources on each server
- D. Service must not be deployed using the same operating system

Answer: B

NEW QUESTION 3

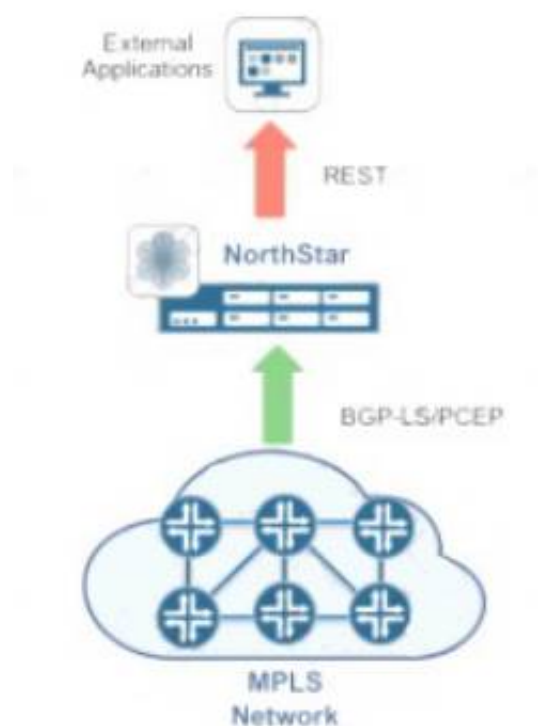
Which cloud CPE component manages the end-to-end path from the CPE to the central office or to another CPE?

- A. service orchestration
- B. infrastructure orchestration
- C. physical telco cloud infrastructure
- D. virtual network functions

Answer: A

NEW QUESTION 4

Exhibit:



Which type of SDN is shown in the exhibit?

- A. API-based SDN
- B. OpenFlow-based SDN
- C. SDN as an overlay
- D. SDN as an underlay

Answer: B

NEW QUESTION 5

What are two major components of the NorthStar Controller system? (Choose two.)

- A. PCE
- B. PCC
- C. CE
- D. vPE

Answer: AB

NEW QUESTION 6

What are two roles of sandboxing in Sky ATP? (choose two)

- A. To test the operation of security rules
- B. To analyze the behavior of potential security threats
- C. To validate the operation of third-party components
- D. To store infected files for further analysis

Answer: BD

NEW QUESTION 7

You are deploying a vMX device in your network
Which two virtualized components are required in this scenario?

- A. virtual forwarding plane
- B. virtual chassis port
- C. virtual chassis fabric
- D. virtual control plane

Answer: AD

NEW QUESTION 8

You are using the NorthStar Controller to manage your WAN. You are required to remove a node from the network for maintenance purposes. You want to compute and provision alternate forwarding paths so that traffic is re-routed around the node being taken offline for maintenance.
Which NorthStar Controller feature would be used in this scenario?

- A. path diversity
- B. maintenance mode
- C. shared risk link groups
- D. node diversity

Answer: B

NEW QUESTION 9

Which two hypervisors does the vMX support? (Choose two)

- A. KVM
- B. xen
- C. ESXi
- D. Hyper V

Answer: AC

NEW QUESTION 10

What information does an underlay network use to route data?

- A. Application name
- B. Customer ID
- C. IP address
- D. Customer name

Answer: C

NEW QUESTION 10

Which two benefits does the Junos Telemetry Interface(JTI) provide in an AppFormix architecture?(Choose two.)

- A. JTI enables you to deploy security policies to vSRX devices
- B. JTI uses a push model to deliver data asynchronously
- C. JTI enables you to collect and export data from resources such as firewall filters
- D. JTI uses an SNMP pull model to eliminate additional processing

Answer: BC

NEW QUESTION 11

You must set up multiple collection points across your network to look for malware and rogue SSH attempts. What will allow you to accomplish this task?

- A. AppFormix
- B. NorthStar
- C. networking
- D. JATP

Answer: D

NEW QUESTION 13

What are two objectives of SDN?(choose two)

- A. centralization of control plane
- B. physical separation of the control plane from the data plane

- C. centralization of the forwarding plane
- D. centralization of the services plane

Answer: AB

NEW QUESTION 14

Which two components are part of the AppFormix architecture? (Choose two)

- A. Policy controller
- B. Compute node
- C. SDN controller
- D. Data platform

Answer: AD

NEW QUESTION 19

You want to secure sensitive data and detect malware in your network. Which component would be used to satisfy this requirement?

- A. AppFormix
- B. Sky ATP
- C. Network director
- D. Contrail cloud

Answer: C

NEW QUESTION 23

Which two statements are true about virtualized platforms?(Choose two.)

- A. The vSRX must have two vCPU dedicated to the vCP
- B. The vMX used separate VMs to host the vCP and vFP
- C. The vSRX must have one vCPU dedicated to the vCP
- D. The vMX uses one VM to host the vCP and vFP

Answer: BC

NEW QUESTION 25

Which protocol is used by the NorthStar Controller to discover existing tunnels in a service provider or large enterprise WAN?

- A. SNMP
- B. PCEP
- C. REST
- D. NETCONF

Answer: BD

NEW QUESTION 30

What are two concepts of private cloud? (choose two)

- A. Resources are dedicated to your organization
- B. Resources are accessed through a private connection
- C. Non-critical resources are located outside of your organization
- D. Resources are not secured by firewalls

Answer: AB

NEW QUESTION 35

Which CSO component enables the monitoring of the CSO system to provide real-time data about the Cloud CPE solution?

- A. Administration Portal
- B. AppFormix
- C. Designer Tools
- D. Customer Portal
- E. Service and Infrastructure Monitor

Answer: E

NEW QUESTION 37

Which statement is true regarding Layer 3 underlay fabric networks?

- A. Layer 3 underlay fabric networks can only be used across public networks
- B. Layer 3 underlay fabric networks rely on IPsec tunnels to interconnect tenants
- C. Layer 3 underlay fabric networks rely on Layer 2 loop prevention protocols
- D. Layer 3 underlay fabric networks are more scalable than Layer 2 fabric underlay networks

Answer: D

NEW QUESTION 39

Which two statements are true regarding private cloud services? (Choose two.)

- A. A private cloud must apply encryption to all stored data
- B. A private cloud has dedicated resources for individual customers
- C. A private cloud can be deployed in a service provider network
- D. A private cloud cannot connect to a public cloud

Answer: BC

NEW QUESTION 41

Devices in your data center have become unwilling participants of botnet attacks. In this scenario, which security technology should you use to stop this behavior?

- A. Policy Enhancer
- B. Sky ATP GeoIP threat protection
- C. Sky ATP C&C threat protection
- D. IPsec

Answer: C

NEW QUESTION 45

AppFormix has been deployed in your data center using the Juniper Telemetry Interface(JTI) native sensors. However, the underlay devices have not yet been set up to work with the JTI native sensors.

Which action is required for the JTI native sensors to work properly?

- A. Install the AppFormix network agent on the underlay devices
- B. Enable NETCONF over SSH on the underlay devices
- C. Enable SSH on the underlay devices
- D. Enable GPB messaging on the underlay devices

Answer: D

NEW QUESTION 50

You want to automate the management of virtualized applications using Contrail Networking Which type of SDN is used in this scenario?

- A. OpenFlow SDN
- B. API SDN
- C. Overlay SDN
- D. Ansible Automation

Answer: B

NEW QUESTION 55

Which statement is correct about overlay network?

- A. An overlay network requires an OSPF area.
- B. An overlay network must have switches interconnected in a spine- leaf implementation
- C. An overlay network uses tunneling technologies
- D. An overlay network requires the CLOS architecture

Answer: C

NEW QUESTION 60

What are two Microservices provided by contrail services orchestration? (Choose two)

- A. REST API server
- B. Fabric Manager
- C. VIM director
- D. Security director

Answer: BD

NEW QUESTION 63

Which Junos Space application integrates with both VMware vSphere and VMware NSX solutions to automate the movement of VLANs between physical and virtual servers?

- A. Edge Services Director
- B. Policy Enforcer
- C. Network Director
- D. Connectivity Services Director

Answer: C

NEW QUESTION 65

You are asked to reduce traffic on an MPLS VPN by automatically moving the traffic to an Internet circuit as long as it satisfies the SLA requirements. In this scenario, what would you use to accomplish this task?

- A. Contrail Cloud
- B. NorthStar
- C. AppFormix
- D. Contrail SD-WAN

Answer: B

NEW QUESTION 66

A company requests increased bandwidth during two specific periods each year. Which solution will accomplish the desired result?

- A. NorthStar planner
- B. NorthStar bandwidth calendaring
- C. NorthStar maintenance Mode
- D. Centralized Path computation

Answer: A

NEW QUESTION 67

Which statement is true about NFV containers?

- A. NFV containers usually provide fewer functions than VM-based NFs
- B. NFV containers require an underlying hypervisor for deployment
- C. NFV containers take longer to instantiate than virtual machines
- D. NFV containers require more memory and storage resources to deploy

Answer: A

NEW QUESTION 71

Server-1 has an infection and is communicating with a command and control server on the Internet. You want to ensure that the infection on Server-1 does not infect Server-2? Which two actions accomplish this task?(Choose two.)

- A. Deploy Sky ATP with advanced anti-malware protection
- B. Deploy Sky ATP with C&C protection
- C. Deploy Policy Enhancer to isolate infected host
- D. Deploy Sky ATP with GeolP protection

Answer: AB

NEW QUESTION 74

From where does AppFormix gather performance metrics in a network?

- A. from RPM probes sent across the network
- B. from statistics NFVs instantiated in the data path
- C. from an agent on the host or system
- D. from a REST API connection

Answer: C

NEW QUESTION 78

What are two protocols used by NorthStar Controller to discover the network topology?(Choose two)*****

- A. SNMP
- B. OSPF-TE
- C. NETCONF
- D. BGP-LS

Answer: BD

NEW QUESTION 81

Which two protocols are used in a Contrail system to exchange routing information? (Choose two)

- A. XMPP
- B. BGP
- C. OSPF
- D. IS-IS

Answer: AB

NEW QUESTION 83

What are three software suites that contribute to cloud architectures? (Choose three.)

- A. Kubernetes
- B. Ubuntu
- C. VirtualBox
- D. vSphere
- E. Openstack

Answer: ADE

NEW QUESTION 86

A customer want to deploy a website that can scale as needed
Which type of services should the customer purchase in this scenario?

- A. DBaaS
- B. SaaS
- C. BGPaaS
- D. FWaaS

Answer: B

NEW QUESTION 91

Which statement is true regarding an OpenFlow controller-based software defined network?

- A. The forwarding plane of each device in the network is programmed by the controller
- B. The control plane of each device in the network is instantiated by the controller
- C. The SDN controller pushes configuration files to each device in the network using RESTful APIs
- D. The forwarding plane of each device in the network is managed by the device

Answer: A

NEW QUESTION 93

Which statement defines a public cloud?

- A. The cloud infrastructure is a composition of two or more strict cloud infrastructures
- B. The cloud infrastructure is provisioned for exclusive use by aspecific community of consumers from organizations that have shared concerns
- C. The cloud infrastructure is provisioned for exclusive use by a single organization comprising multiple consumers
- D. The cloud infrastructure is provisioned for open use by the general Public

Answer: D

NEW QUESTION 96

Which type of tunnels are provisioned by the NorthStar controller?

- A. IPsec VPNs
- B. VPLs
- C. MPLS LSPs
- D. GRE over UDP

Answer: C

NEW QUESTION 99

Which juniper product provides insight into the underlay and overlay network at the same time?

- A. Security Director
- B. AppFormix
- C. Edge Services Director
- D. Juniper Extension Toolkit
- E. Contrail Analysitcs

Answer: B

NEW QUESTION 103

Which OpenStack service manage image storage?

- A. Glance
- B. Swift
- C. Nova
- D. Heat

Answer: A

NEW QUESTION 104

You are deploying a Layer 2 underlay network with 2,000 devices and hosts. Which two statements are correct?

- A. Network routing tables can become very large and unmanageable
- B. RPF is used for loop prevention
- C. The MAC tables can become very large and unmanageable
- D. RSTP can be used for loop prevention

Answer: CD

NEW QUESTION 108

What provisions new switches or routers in your network automatically, with no manual intervention?

- A. PCEP
- B. ZTP
- C. BGP
- D. RSVP

Answer: B

NEW QUESTION 112

What are two characteristics of Juniper's Connected Security Solution?(Choose two.)

- A. manual secure policy control
- B. dynamic VPN connections
- C. centralized management
- D. enforcement everywhere on the network

Answer: CD

NEW QUESTION 115

What are two characteristics of cloud computing?(Choose two.)

- A. customer-owned equipment
- B. measured service
- C. resource pooling
- D. unrestricted public access to all resources

Answer: BC

NEW QUESTION 120

In which two scenarios is Contrail used? (Choose two.)

- A. private cloud networking
- B. network hardware lifecycle management
- C. Network Functions Virtualization
- D. policy-based routing

Answer: AC

NEW QUESTION 125

A customer is planning a significant upgrade to their network that requires an increase in bandwidth. They want to schedule the increase for a specific date and time.

Which feature within the NorthStar controller allows you to automate this process?

- A. LSP and Link Statistics
- B. Maintenance Mode
- C. Bandwidth Calendaring
- D. NorthStar Planner

Answer: C

NEW QUESTION 126

Which two data models are supported for the Junos Telemetry Interface (JTI)? (Choose two.)

- A. Azure Application Insights
- B. Native Sensors
- C. Amazon Kinesis
- D. OpenConfig

Answer: BD

NEW QUESTION 130

You are using service chains.

In this scenario, which component launches the NFV VM?

- A. vRouter
- B. NorthStar Controller

- C. compute node
- D. orchestrator

Answer: C

NEW QUESTION 135

What are three orchestrators that integrate with Contrail? (Choose three)

- A. VirtualBox
- B. Kubernetes
- C. Ubuntu
- D. OpenStack
- E. vSphere

Answer: BDE

NEW QUESTION 140

Which statement is true about VNFs?

- A. VNFs are always physical devices
- B. VNFs are virtual devices
- C. VNFs are only used in service provider clouds
- D. VNFs are only used in data centers

Answer: B

NEW QUESTION 145

What are two examples of SaaS?(Choose two) *****

- A. Amazon Web Services
- B. SalesForce
- C. Google Apps
- D. IBM Cloud

Answer: AB

NEW QUESTION 147

Which two statements describe cloud CPE?(Choose two.)

- A. Cloud CPE require heavy investment in vendor-specific hardware
- B. Cloud CPE encourages administrators to use all-in-one appliances
- C. Cloud CPE allows multivendor, open support of software-based functions
- D. Cloud CPE eliminates the need for investing in expensive hardware

Answer: BD

NEW QUESTION 151

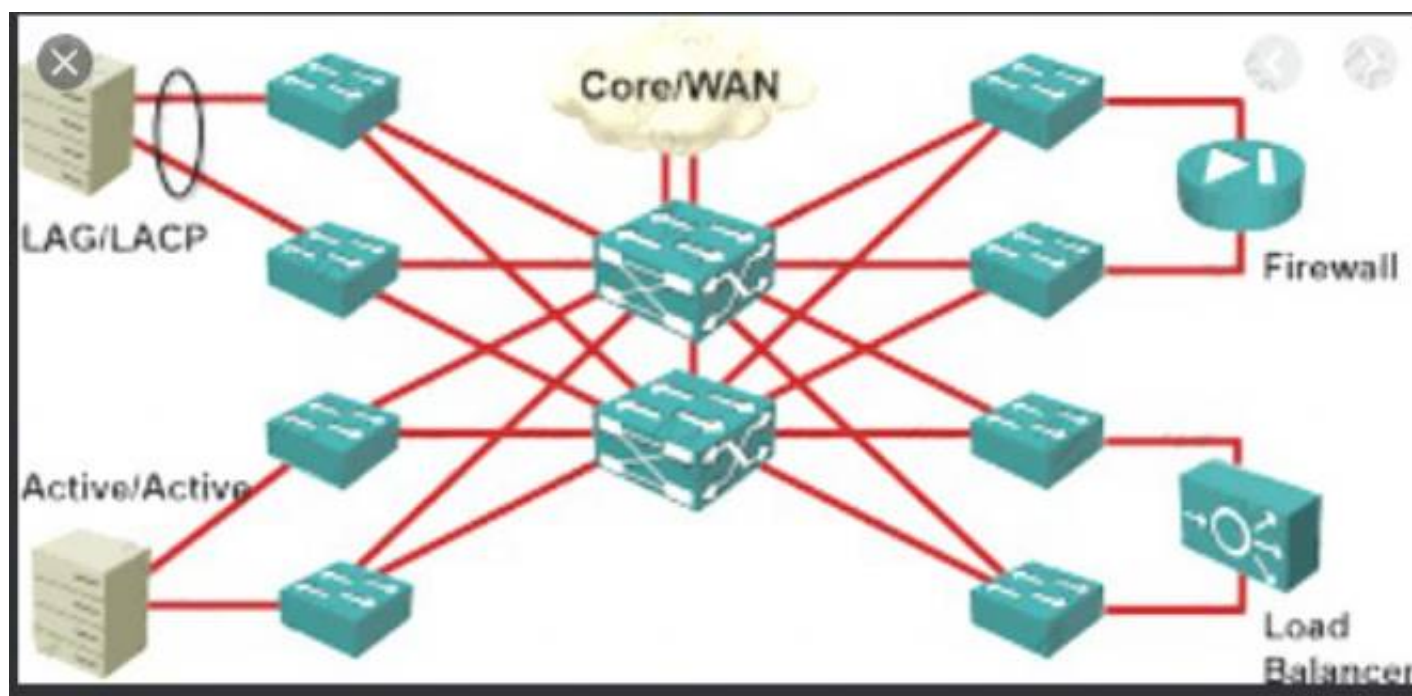
You need to find a product that will allow for the deployment of security devices to a new tenant edge network in less than one second Which product accomplishes this task?

- A. MX
- B. NFX
- C. vSRX
- D. cSRX

Answer: D

NEW QUESTION 153

Exhibit:



Which type of the topology is shown in the exhibit?(picture)

- A. EGP topology
- B. spine-and-leaf topology
- C. tree topology
- D. hub-and-spoke topology

Answer: B

NEW QUESTION 154

Which Juniper product is used to remotely provision the NFX250 platform for Network Functions Virtualization?

- A. Contrail Service Orchestration
- B. Contrail Security
- C. Virtual Route Reflector
- D. Junos Space Security Director

Answer: A

NEW QUESTION 156

Which two features does the Junos Telemetry interface (JTI) support? (Choose two).

- A. JTI provides real-time telemetry.
- B. JTI does not need a collector to store data
- C. JTI requires no configuration
- D. JTI can stream in multiple data models

Answer: AD

NEW QUESTION 158

According to the juniper network, what is the recommended external routing protocol for the underlay network?

- A. IS-IS
- B. EGP
- C. OSPF
- D. BGP

Answer: D

NEW QUESTION 161

.....

THANKS FOR TRYING THE DEMO OF OUR PRODUCT

Visit Our Site to Purchase the Full Set of Actual JN0-211 Exam Questions With Answers.

We Also Provide Practice Exam Software That Simulates Real Exam Environment And Has Many Self-Assessment Features. Order the JN0-211 Product From:

<https://www.2passeasy.com/dumps/JN0-211/>

Money Back Guarantee

JN0-211 Practice Exam Features:

- * JN0-211 Questions and Answers Updated Frequently
- * JN0-211 Practice Questions Verified by Expert Senior Certified Staff
- * JN0-211 Most Realistic Questions that Guarantee you a Pass on Your FirstTry
- * JN0-211 Practice Test Questions in Multiple Choice Formats and Updatesfor 1 Year