

1Z0-632 Dumps

PeopleSoft PeopleTools 8.5x Implementation Essentials

<https://www.certleader.com/1Z0-632-dumps.html>



NEW QUESTION 1

Which statement is correct about the following PeopleCode statement?

```
class RO_ROWSET extends Rowset
```

- A. RO_ROWSET is the superclass of the Rowset class
- B. Rowset is the superclass of the RO_ROWSET class
- C. RO_ROWSET is an instance of the Rowset class
- D. Rowset is a subclass of the RO_ROWSET class
- E. RO_ROWSET is an application class in the Rowset application package

Answer: D

NEW QUESTION 2

Which two PeopleCode excerpts contain syntax errors?

1	If All(PSU_CRS_SESSN.START_DATE, PSU_CRS_SESSN.END_DATE) And PSU_CRS_SESSN.START_DATE > PSU_CRS_SESSN.END_DATE Then Error MsgGet(1040, 3, "Message Not Found.") End-If;
2	If PSU_EMP_RVW_RVR.REVIEW_TYPE = "E" Then COMMENT Reviewer is an employee; COMMENT Disable REVIEWER_ID; PSU_EMP_RVW_RVR.REVIEWER_ID.Value = PSU_EMP_RVW_RVR.EMPLID; PSU_EMP_RVW_RVR.REVIEWER_ID.Enabled = False; End-If;
3	Local Message &request, &response; Local Row &Row; Local Rowset &Rowset;
4	Local Field &Crstype; &Crstype = GetField(PSU_COURSE_TBL.COURSE_TYPE); &Crstype.Value = "T"; &Crstype.Enabled = False;
5	&OLD_PRICE > &TOTAL_PRICE; &TOTAL_PRICE = &QTY_ORDERED * &PRICE; &GRAND_TOTAL = &GRAND_TOTAL + &TOTAL_PRICE - &OLD_PRICE;

- A. 2
- B. 4
- C. 5
- D. 1
- E. 3

Answer: CE

NEW QUESTION 3

What are the required steps for using a PeopleCode application class? Arrange them in the correct order.

1. Declare an object of the application class.
2. Import the application class.
3. Invoke methods or use properties.
4. Instantiate the object.
5. Initialize the object.

- A. 1, 2, 5, 3
- B. 1, 2, 4, 5, 3
- C. 2, 1, 4, 3
- D. 1, 2, 4, 3
- E. 2, 1, 4, 5, 3

Answer: E

NEW QUESTION 4

At line number 7 in this record definition, the PSU_ADDRESS_XXX field name represents a .

T1_CUST_TBL (Record)						
Record Fields		Record Type				
Num	Field Name	Type	Len	Format	Short Name	Long Name
1	CUSTOMER_ID	Char	6	Upper	Customer	Customer
2	DESCR	Char	30	Mixed	Descr	Description
3	DESCRSHORT	Char	10	Mixed	Short Desc	Short Description
4	CUSTOMER_TYPE	Char	1	Upper	Type	Customer Type
5	INDUSTRY_ID	Char	30	Upper	Industry ID	Industry ID
6	PHONE	Char	24	Custm	Phone	Telephone
7	PSU_ADDRESS_XXX	XXX				
	STREET1	Char	30	Mixed	Street	Street (line1)
	CITY	Char	30	Mixed	City	City
	STATE	Char	6	Upper	St	State
	ZIP	Char	10	Nurs	Zip	Zip Code
	COUNTRY	Char	3	Upper	Cntry	Country
8	CONTRACT_DT	Date	10		Contract Dt	Contract Date
9	TRAINING_UNITS	Nbr	41		Units	Training Units

- A. Subpage

- B. Compound field
- C. Subrecord
- D. Derived/Work record
- E. Composite field

Answer: C

NEW QUESTION 5

Match each valid PeopleCode variable scope in the first column with its corresponding duration in the second column and its description in the third column.

Scope	Duration	Description
1. Local	A. The current PeopleSoft session.	a. Transfer values between PeopleCode programs in the current component.
2. Derived	B. Concurrent PeopleSoft sessions.	b. Pass parameters between functions.
3. Global	C. The current PeopleCode program.	c. Transfer values between components.
4. Component	D. The current PeopleSoft component.	d. Eliminate concern about conflict with same-named variables.
5. Private	E. The current method.	e. Prevent other programs from modifying variables.

- A. 1Cd, 3Cc, 5Ee
- B. 1Ed, 3Bc, 4Da
- C. 1Cd, 3Ac, 4Da
- D. 1Cb, 2Ca, 3Aa
- E. 1Cd, 3Bc, 5Ee
- F. 1Cd, 3Ac, 4Da

Answer: D

NEW QUESTION 6

You created a new component and registered it in the portal registry. However, when you test it, the content reference is not shown in the menu navigation. To troubleshoot this issue, examine .

- A. the component structure
- B. the portal registry for component parameters
- C. the portal registry for content reference security
- D. the menu definition for the associated component
- E. the component definition for assigned actions

Answer: D

NEW QUESTION 7

You have been asked to create a new record for student suggestion review, which includes a field for implemented Flag, which will be a check box on the page. Before creating a new field, you look for an existing field to reuse.

Label ID	Label	Long Name	Short Name	Del
1	APD_APPROVE	Excluded	Ex	Del
2	FLAG	Flag	Flag	Del
3	NUMERIC	Numeric Field	Numeric	Del
4				

FLAG, as shown in the exhibit, is a PeopleSoft delivered field. You can use this field if which statement is true?

- A. The field only requires adding translate values
- B. The field only requires modifying it to be a Y/N table
- C. The field only requires modifying the field format
- D. The field does not require any modifications
- E. The field only requires an additional field label

Answer: E

NEW QUESTION 8

View the exhibits.

Tab Order	Field ID	Lvl	Label	Type	Field	Record
1	1	0	Customer	Edit Box	CUSTOMER_ID	PSU_CUST_TBL
2	2	0	Description	Edit Box	DESCR	PSU_CUST_TBL
3	3	0	Short Description	Edit Box	DESCRSHORT	PSU_CUST_TBL
4	4	0	Customer	Radio Button	CUSTOMER_TY	PSU_CUST_TBL
5	5	0	Customer Type	Group Box		PSU_CUST_TBL
6	6	0	Industry ID	Edit Box	INDUSTRY_ID	PSU_CUST_TBL
7	7	0	Contract Date	Edit Box	CONTRACT_DT	PSU_CUST_TBL
8	8	0	Partner	Radio Button	CUSTOMER_TY	PSU_CUST_TBL
9	9	0	Employee	Radio Button	CUSTOMER_TY	PSU_CUST_TBL

Based on the page layout, what changes are necessary for the page tab order?

- A. Field IDs should be in the following order: 1, 2, 3, 6, 7, 5, 4, 8, 9
- B. Field IDs should be in the following order: 1, 2, 3, 5, 4, 6, 7, 9, 8
- C. Field IDs should be in the following order: 1, 2, 3, 6, 5, 4, 7, 8, 9
- D. Field IDs should be in the following order: 1, 2, 3, 5, 4, 6, 7, 8, 9
- E. Tab order is correct, no changes are required

Answer: D

NEW QUESTION 9

This PeopleCode statement appears in a PreBuild program:

&Object = GetLevel10();

Which two statements are true? (Choose two.)

- A. &Object is a Rowset object that contains the level 0 row
- B. &Object represents the entire component buffer
- C. &Object is a Row object that contains the level 0 rowset
- D. &Object is a stand-alone rowset
- E. &Object is a stand-alone row
- F. &Object is a Record object that contains the level 0 record

Answer: CF

NEW QUESTION 10

Which two statements are true about how PeopleCode on the SavePreChange and SavePostChange events is processed? (Choose two.)

- A. When placed at the component record level, such PeopleCode triggers a Save when a row is changed
- B. When placed at the component record level, such PeopleCode runs once per row when the user clicks Save
- C. When placed at the component record level, such PeopleCode runs once when the user clicks Save
- D. When placed at the component level, such PeopleCode triggers a Save when data on the page is changed
- E. When placed at the component level, such PeopleCode runs once when the user clicks Save
- F. When placed at the component level, such PeopleCode runs once per row when the user clicks Save

Answer: BD

NEW QUESTION 10

When you attempt to drag a subrecord onto a page, the page definition displays an error. What is the reason for this?

- A. The Use tab on the Page Properties dialog box does not have the Page Size field set to Auto-size so that the page automatically expands to facilitate all the fields in the subrecord
- B. The subrecord definition does not have the Record Type value set to SubRecord
- C. The Use tab on the Record Properties dialog box for the subrecord definition does not have the Parent record field set correctly in the Record Relationship settings
- D. The Page Type Field is not set to be Subpage on the Use tab of the Page Properties dialog box

Answer: C

NEW QUESTION 15

View the exhibits.



Professional Details

Student ID 2924

*Student Name X

*Customer Friends-Little Egg Lighthouse

Project Role V

☒ Same address as Customer Telephone

Street

City

Country United States

State New Jersey

Zip Code

[Personal Details](#) | [Education and Skills](#)

You just added a second page to the student component as shown in Exhibit 1. When you test the page as shown in Exhibit 2, no tabs are displayed. What do you need to do to display the tabs?

- A. On the Internet tab of the Component Properties dialog box, select the Display Hyperlinks check box
- B. On the Internet tab of the Component Properties dialog box, select the Display Folder Tabs check box
- C. Enter the labels for the folder tab labels and on the Use tab of the Component Properties dialog box, select the Include in Navigation check box
- D. On the Use tab of the Component Properties dialog box, select the Include in Navigation check box
- E. Enter the labels for the folder tab labels

Answer: A

NEW QUESTION 17

You have been asked to modify the search record for the instructor table to include course type. What should you select on the Use tab of the record field properties for the COURSE_TYPE field?

- A. List Box Item
- B. Duplicate Order Key
- C. Alternate Search Key
- D. Key
- E. Search Key

Answer: E

NEW QUESTION 21

Select three elements that must be present before registering a component. (Choose three.)

- A. Permission list
- B. Folder
- C. Content reference definition
- D. Primary table
- E. Menu definition

Answer: ABE

NEW QUESTION 26

Here is a partial list of steps in the component processor flow.

1. SQL select
2. Search page
3. Reset defaults
4. Add row to buffer
5. Standard system edits
6. Wait for user action

What is the correct order?

- A. 2, 4, 5, 1, 3, 6
- B. 2, 1, 4, 3, 6, 5
- C. 2, 1, 3, 4, 5, 6

- D. 1, 2, 3, 4, 5, 6
- E. 6, 2, 1, 4, 3, 5

Answer: A

NEW QUESTION 31

Your client has asked you to update their PeopleCode programs to replace outdated system variables with current system variables. Which system variable replaces %OperatorId?

- A. %Session
- B. %CurrentUser
- C. %UserId
- D. %SessionUser
- E. %SessionId
- F. %SignonUserId

Answer: C

NEW QUESTION 32

You have a record definition open in Application Designer, and when you select the Build menu, you notice that the Current Definition option is disabled. (greyed out.)

Why did this happen?

- A. You have already build the table
- B. The record definition Record Type is set to Dynamic View
- C. You saved the record definition using a non-standard SQL table name
- D. You are not connected to the database

Answer: C

NEW QUESTION 34

When you are modifying, customizing, or configuring PeopleSoft application definitions using Application Designer, which two statements are true regarding the impact on other application elements? (Choose two.)

- A. Running an alter table process in Application Designer is required only during major upgrades, not after small changes to a single record definition
- B. PeopleTools provides utilities to help you determine relationships between application definitions, such as PeopleTools cross-reference reports and the Find Definition References option
- C. If you modify field definition properties or record definition properties, the PeopleTools system insanity and automatically synchronizes the definition changes with the underlying SQL database table
- D. Changing a single field property, such as the field name or type, typically has no effect on other definitions such as records or pages
- E. If you alter a table, you must rebuild any views that reference the altered table

Answer: BE

NEW QUESTION 37

Examine the following code:

```
&SQL = GetSQL(SQL.ABSENCE_SQL, JOB.EMPL_ID);  
While &SQL.Fetch(&start_dt)  
    /* Do some processing here. */  
End-While;
```

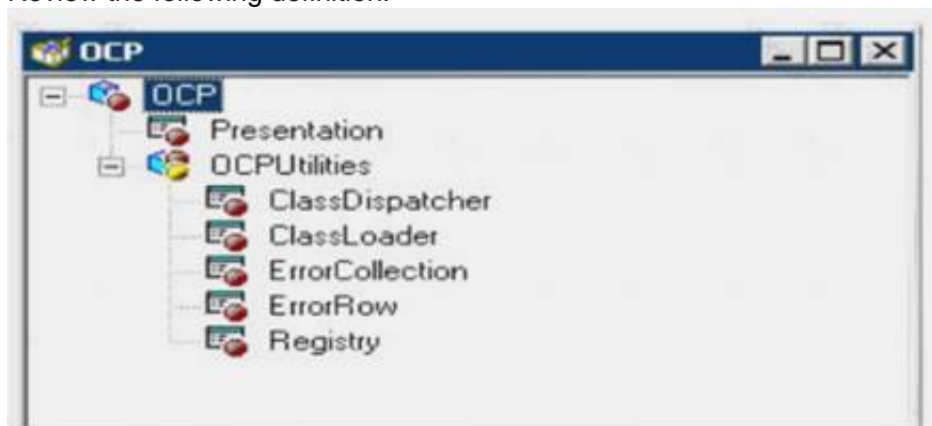
Which two statements are correct? (Choose two.)

- A. ABSENCE_SQL contains an INSERT clause
- B. ABSENCE_SQL contains a DELETE clause
- C. ABSENCE_SQL is a SQL object
- D. ABSENCE_SQL is a SQL definition name
- E. ABSENCE_SQL contains a SELECT clause
- F. ABSENCE_SQL is a SQL method

Answer: EF

NEW QUESTION 42

Review the following definition:



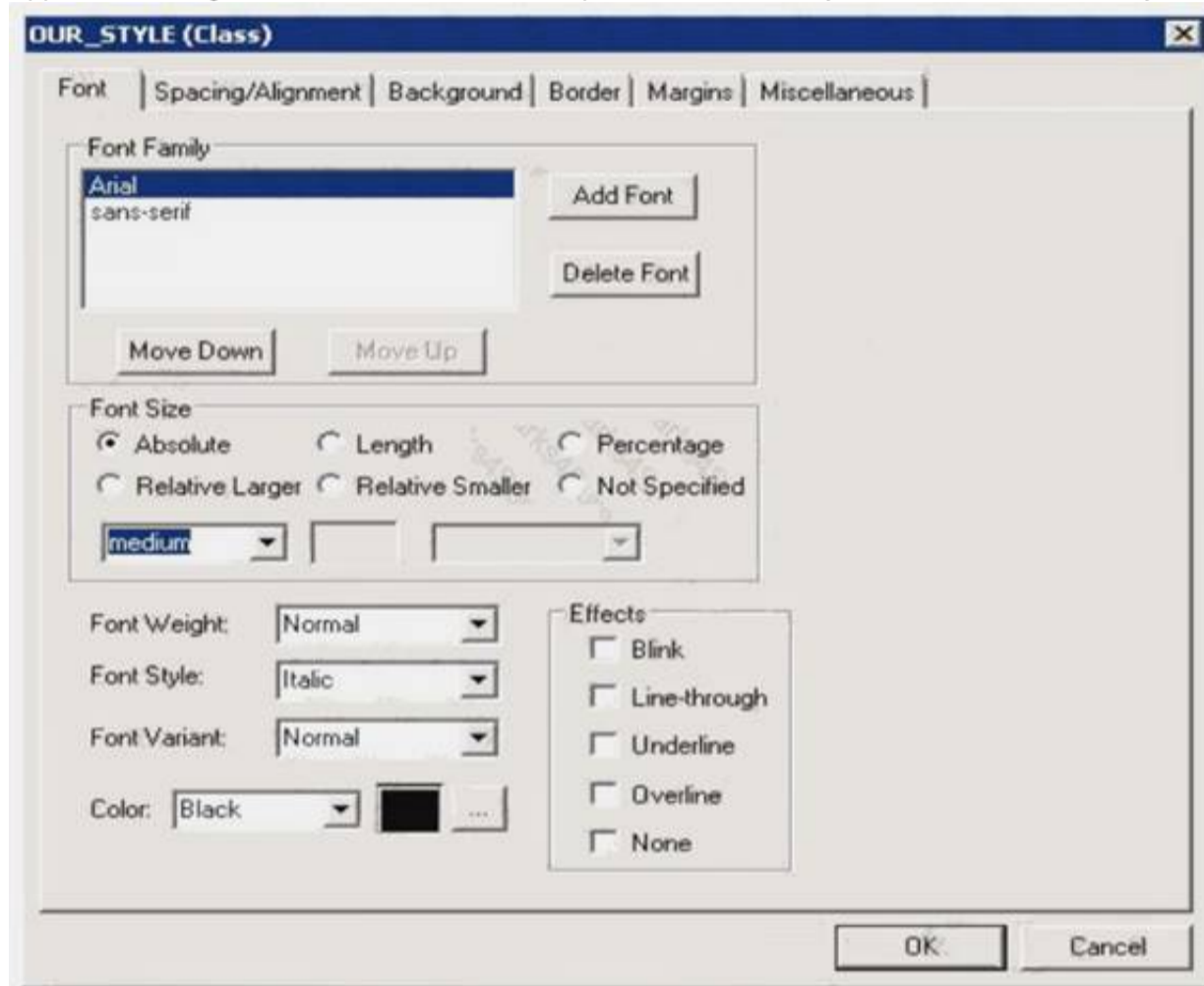
Select the correct PeopleCode statement to declare an object of the ErrorRow class.

- A. Component OCP:OCPUtilities: ErrorRow &NewObject
- B. Component &NewObject extends ErrorRow;
- C. Row OCP:OCPUtilities:ErrorRow &NewObject;
- D. &NewObject = create OCP:OCPUtilities:ErrorRow();
- E. &NewObject = Get (OCP:OCPUtilities:ErrorRow);
- F. Component OCP.OCPUtilities.ErrorRow &NewObject

Answer: A

NEW QUESTION 43

A colleague needs to update a custom cascading style sheet (CSS) style for your team's fluid application. She has the style definition shown in this exhibit open in Application Designer, but isn't sure if she has opened the correct style definition and asks for your advice.



How do you know she does not have a fluid CSS style open?

- A. The fluid user interface does not use the Arial or the sans-serif font
- B. The fluid user interface uses only the Lucida Grande and Helvetica Neue fonts
- C. In the fluid user interface, font color is not set on the style definitio
- D. The current branding theme is what determines the font color for the fluid user interface display
- E. The fluid user interface does not use absolute font size
- F. Only relative font sizes apply to the dynamic nature of the fluid user interface
- G. The fluid user interface uses only free form style sheets, and this style sheet is a fixed from style sheet
- H. Fluid style sheets all have _FL appended to the style name

Answer: D

NEW QUESTION 44

Select two true statements about translate values. (Select two.)

- A. You can assign translate values to any character field that is four characters long or less
- B. The default label for a page field is the translate long name
- C. You can inactivate any translate value by changing the value of the effective status field to "I"
- D. You must maintain translate values through Application Designer
- E. You must enter a translate short name

Answer: AE

NEW QUESTION 49

Select three steps that comprise the user interface phase of PeopleSoft application development? (Choose three.)

- A. Register components
- B. Define fields
- C. Define pages
- D. Define components
- E. Define records
- F. Build records

Answer: ACD

NEW QUESTION 52

Which three statements are correct? (Choose three.)

- A. Derived/work fields and variables can be displayed on the page
- B. Derived/work fields and variables provide temporary storage of calculated values
- C. Derived/work fields and record fields provide permanent storage of values
- D. Derived/work fields and record fields can be displayed on the page
- E. Derived/work fields and record fields can include executable PeopleCode programs

Answer: ADE

NEW QUESTION 55

When registering fluid components, assume you usually create the content references so that they reside in the My Fluid Applications folder as shown in the exhibit.



However, for your Fluid Billing component, you register the component so the content reference resides in a folder outside the Fluid Pages folder in the Billing folder (Root>Billing).

What effect does this have on users accessing this component?

- A. A tile for this fluid component cannot be added to a fluid homepage using the Add Tile button on the Personalize Homepage page
- B. Users will not be able to add this component to their Favorites list
- C. There is no effect on the user accessing the componen
- D. The component can be accessed the same ways as any fluid component
- E. Users will not be able to access this component using a smartphone or tablet
- F. Users will not be able to navigate to the component using the NavBar, Navigator option

Answer: A

NEW QUESTION 57

You are asked to modify the Customer Products Purchased application to provide auto complete on the search page for the customer name. This application uses the following definitions.

- Search record: PSU_CUST_TBL
- Record: PSU_CUST_PROD
- Page: PSU_CUST_PROD
- Component: PSU_CUST_PROD

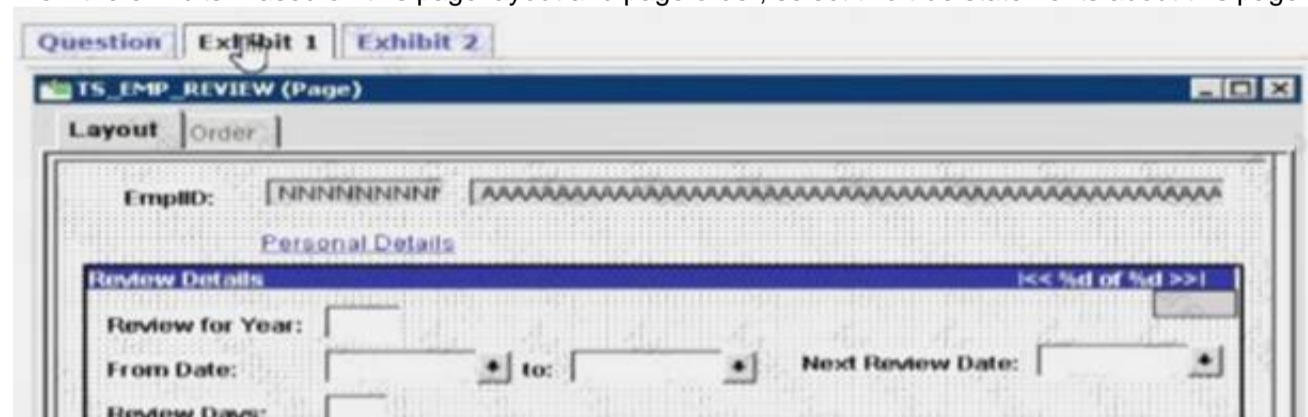
How will you implement this change?

- A. Select the Enable Autocomplete when used in Search Record check box for the DESCR field on the PSU_ CUST_PROD record
- B. Select the Enable Autocomplete when used in Search Record check box for the CUSTOMER_ID field on the PSU_ CUST_PROD record
- C. Select the Force Search Processing check box on the Use tab of the Component Properties dialog box for PSU_CUST_PROD
- D. Select the Enable Autocomplete when used in Search Record check box for the DESCR field on the PSU_ CUST_TBL record
- E. Select the Enable Autocomplete when used in Search Record check box for the CUSTOMER_ID field on the PSU_CUST_TBL record
- F. Select the Show Prompt Button check box for the DESCR field on the PSU_CUST_PROD page

Answer: C

NEW QUESTION 60

View the exhibits. Based on this page layout and page order, select two true statements about this page definition.



Question Exhibit 1 Exhibit 2

TS_EMP_REVIEW (Page)

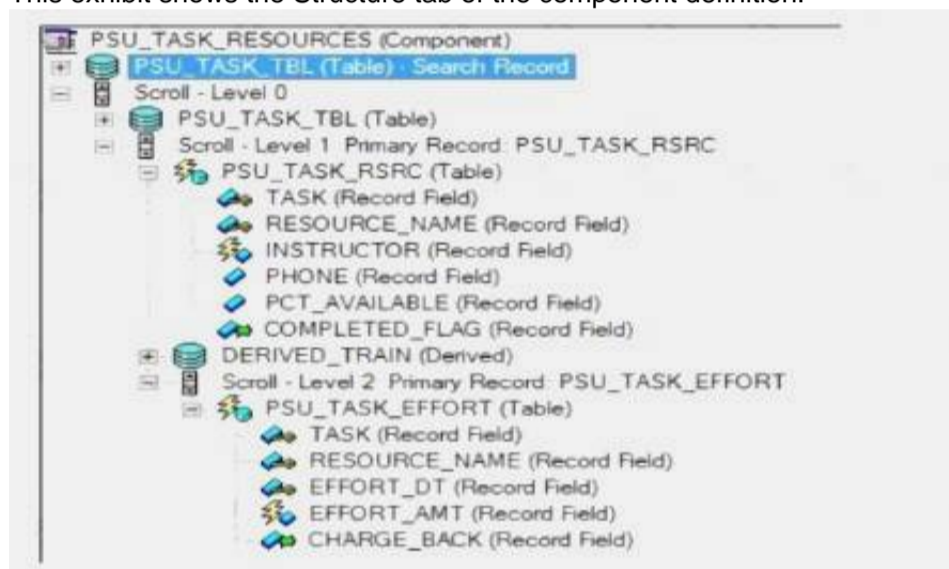
	ID	Lv	Label	Type	Field	Record	Display Control	Related Field	Control Field
1	1	0	EmpID	Edit Box	EMPID	PERSONAL_DAT			
2	2	0	Name	Edit Box	NAME	PERSONAL_DAT			
3	14	0	Personal Details	Push Btn/Link		PSU_EMP_RVW			
4	3	1	Review Details	Scroll Area					
5	16	1	Edit Table	Edit Box	EDITTABLE	DERIVED			
6	4	1	Review for Year	Edit Box	REVIEW_YEAR	TS_EMP_REVIEW			
7	6	1	From Date	Edit Box	FROM_DT	TS_EMP_REVIEW			
8	7	1	to	Edit Box	TO_DT	TS_EMP_REVIEW			
9	8	1	Next Review Date	Edit Box	DATE	TS_EMP_REVIEW			
10	9	1	Review Days	Edit Box	REVIEW_DAYS	TS_EMP_REVIEW			
11	10	1	Reviewer Details	Scroll Area					
12	15	1	Review Type	Drop Down List	REVIEW_TYPE	TS_EMP_RVW			
13	11	1	Reviewer ID	Edit Box	REVIEWER_ID	TS_EMP_RVW			
14	13	1	Name	Edit Box	NAME	PERSONAL_DAT			13

- A. The TS_EMP_REVIEW page is saved without error
B. The TS_EMP_REVIEW page contains a parent/child design error
C. The TS_EMP_REVIEW page is saved with a related field error
D. The TS_EMP_REVIEW page is saved with a duplicate record field warning

Answer: A

NEW QUESTION 61

This exhibit shows the Structure tab of the component definition.



The following PeopleCode program has been placed on the RowInit event for the Level 2 component record (PSU_TASK_EFFORT)

```

If PSU_TASK_RSRC.COMPLETED_FLAG = "Y" Then
    Local Record &Rec_TaskEffort = GetRecord();
    For &i = 1 To &Rec_TaskEffort.FieldCount
        &Rec_TaskEffort.GetField(&i).Enabled = False;
    End-For;
End-If;

```

Which three changes are required to move this program to the RowInit event for the Level 1 component record (PSU_TASK_RSRC)? (Choose three.)

- A. Add an outer loop to loop through each row in the level 2 rowset
B. Instantiate the level 2 rowset from the level 1 row
C. Add on outer loop to loop through each record in the level 2 rowset
D. Instantiate the level 1 row
E. For each level 2 row, instantiate a record object
F. Instantiate a record object for the level 1 row

Answer: BCF

NEW QUESTION 64

This exhibit shows the placement of fields on your fluid page definition in Application Designer.

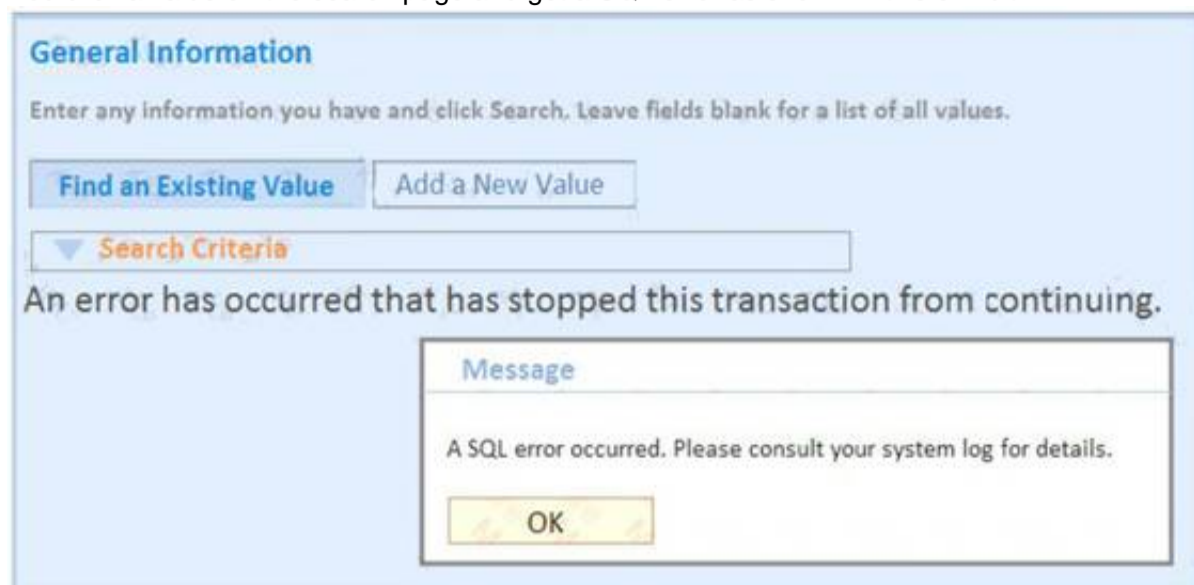
What will you need to do so that these fields display in an orderly fashion for the end user in the browser?

- A. Set the Input Type property on the Fluid tab for each page control to reflect the field type
B. Set the Alignment property on the Record tab for each page control to Auto
C. You don't need to do anything because default cascading style sheet (CSS) styling arranges the page controls as needed for the end user
D. Select Enable JavaScript on the Fluid tab of the Page Properties dialog box
E. Align them manually, using drag and drop, in Application Designer

Answer: B

NEW QUESTION 65

You click a value on the search page and get a SQL error as shown in this exhibit.



What should you do to troubleshoot this issue and fix it?

- A. Check the page definition, make the necessary changes, and save the page
- B. Check the Use tab of the Component Properties dialog box, verify the search record, make the necessary changes, and save the component
- C. Check if the record definition was modified by another developer and perform an alter table
- D. Check the record key structure, make the necessary changes, save the record, and then perform a create indexes
- E. Check the record key, alternate search key, and list box settings of the search record, and save the record

Answer: A

NEW QUESTION 67

Which two field types should be places as the last field in the list of fields in a PeopleSoft record definition? (Select two.)

- A. Character
- B. Attachment
- C. ImageReference
- D. Prompt
- E. Image
- F. LongCharacter

Answer: DEF

NEW QUESTION 72

Examine this PeopleCode statement:

```
&Date = ORDER.DATE;
```

Select the object-oriented equivalent.

- A.

```
&Field.Value = GetField(ORDER.DATE);
```
- B.

```
Field = GetField(ORDER.DATE);  
&Date = &Field.Value;
```
- C.

```
&Field = CreateField();  
&Date = &Field(ORDER.DATE);
```
- D.

```
&Date.GetValue = ORDER.DATE;
```
- E.

```
&Date = GetValue(ORDER.DATE);
```

- A. Option A
- B. Option B
- C. Option C
- D. Option D
- E. Option E

Answer: A

NEW QUESTION 77

Select three changes to a record definition that require you to rebuild the SQL table. (Choose three.)

- A. You change an ascending key to a descending key
- B. You deselect the Alternate Search Key check box
- C. You change the length of a non-key field
- D. You deselect the Search Key check box (only) for a field
- E. You change the label of a key field

Answer: ACD

NEW QUESTION 79

What do you need to do to display the Add a New Value search page as shown in this exhibit?

- A. Select the Add check box in the Toolbar group box on the Internet tab of the Component Properties dialog box
- B. Select a Primary Action of New in the Search Page group box on the Internet tab of the Component Properties dialog box
- C. Select a Default Search Action of Add in the Search Page group box on the Internet tab of the Component Properties dialog box
- D. Select the Add check box in the Actions group box on the Use tab of the Component Properties dialog box.
- E. Select a record from the Add search record drop-down list on the Use tab of the Component Properties dialog box

Answer: B

NEW QUESTION 83

Identify three true statements describing PeopleTools tables. (Choose three.)

- A. PeopleTools tables can be updated equally using PeopleTools, such as Application Designer, or the SQL editing tool for your database platform
- B. PeopleTools tables use the naming convention of having the prefix PD*, as in PSRECDEFN
- C. PeopleTools tables store metadata that defines the elements of a PeopleSoft application
- D. PeopleTools tables contain the same content, regardless of the PeopleSoft application installed on the database
- E. PeopleTools tables have a consistent structure, regardless of the PeopleSoft application installed on the database
- F. PeopleTools tables are empty until the implementation team has loaded the application's transactional data

Answer: ABC

NEW QUESTION 85

You are testing the new Customer Table page and notice that you are missing a Return to Search button on the page.

To add this button in Application Designer, open the Component Properties dialog box and .

- A. On the Internet tab, select Return to Search
- B. On the Internet tab, select Page Navigation in History
- C. On the Use tab, select Update/Display
- D. On the Internet tab, select Return to List
- E. On the Use tab, select Return to Search

Answer: D

NEW QUESTION 90

Which two PeopleCode excerpts contain syntax errors? (Choose two.)

1	<pre>method OnNotify /+ &msg as Message +/ /+ Extends/implements PS_PT:Integration:INotificationHandler.OnNotify +/ &msg.ExecuteEdits(%Edit_PromptTable); end-method;</pre>
2	<pre>Local number &total, &spent, &to_go; &total = PSU_TASK_TBL.EFFORT_TOTAL; Declare Function Calc_Effort_ToGo PeopleCode DERIVED_TRAIN.EFFORT_TO_GO File Calc_Effort_ToGo(&total, &spent, &to_go);</pre>
3	<pre>import PSU:Math; Local PSU:Math &m = create PSU:Math(); Local number &answer; &answer = &m.Multiply(4, 5);</pre>
4	<pre>class Feed property string FeedFormat get; private instance string &feedFormat_inst; end-class; get FeedFormat /+ Returns String +/ Return &feedFormat_inst; end-get; set FeedFormat /+ &NewValue as String +/ &feedFormat_inst = &NewValue; end-set;</pre>
5	<pre>class Math method Math(); method Multiply(&x As number, &y As number) Returns number; method Add(&x As number, &y As number) Returns number; protected method Communicate(&text As string); end-class;</pre>

- A. 1
- B. 2
- C. 3
- D. 4
- E. 5

Answer: DE

NEW QUESTION 92

Which two statements indicate the actions that need to be taken before changing the default field label on a field definition? (Choose two.)

- A. Check if the default label is used in any page definitions
- B. Check if the default label is used in any record definitions
- C. Check if the default label is used in any component definitions
- D. Check if the default label is used in any PeopleCode
- E. Check if the default label is active

Answer: AB

NEW QUESTION 93

Consider the following three scenarios and six tools or techniques. For each scenario, identify the most appropriate tool or technique for updating the portal registry.

Scenarios:

- S1. Create new content reference (CREF) definitions for three new fluid components.
- S2. Update node and security settings for 10 menu folders containing over 150 CREF definitions.
- S3. Create tile definitions from three existing classic components.

Tools:

- T1. Programmatically with PeopleCode
- T2. Using the CREF Wizard
- T3. Using a component interface
- T4. Manually in the Structure and Content component
- T5. Using the Registration Wizard
- T6. Programmatically with SQR

- A. S1-T2, S2-T1, S3-T3
- B. S1-T2, S2-T6, S3-T4
- C. S1-T5, S2-T4, S3-T3
- D. S1-T5, S2-T3, S3-T4
- E. S1-T5, S2-T1, S3-T4

Answer: D

NEW QUESTION 98

.....

Thank You for Trying Our Product

* 100% Pass or Money Back

All our products come with a 90-day Money Back Guarantee.

* One year free update

You can enjoy free update one year. 24x7 online support.

* Trusted by Millions

We currently serve more than 30,000,000 customers.

* Shop Securely

All transactions are protected by VeriSign!

100% Pass Your 1Z0-632 Exam with Our Prep Materials Via below:

<https://www.certleader.com/1Z0-632-dumps.html>